



WEEKLY SALES SUMMARY

Unaudited

[Week Ending: 11/24/2012](#)

Texas Lottery Commission
Fiscal Year to Date Sales Comparison
Unaudited

Through the week ending 11/24/2012 (13 weeks)

Sales by Game	FY 2011 *	FY 2012 **	FY 2013	\$ Change		% Change	
				FY 2013 to FY 2011	FY 2013 to FY 2012	FY 2013 to FY 2011	FY 2013 to FY 2012
Instants	\$ 637,435,036	\$ 657,960,897	\$ 693,920,672	\$ 56,485,636	\$ 35,959,775	8.9%	5.5%
Lotto Texas	41,123,781	41,937,189	37,597,701	-3,526,080	-4,339,488	-8.6%	-10.3%
Pick 3	65,111,725	62,463,073	61,686,568	-3,425,157	-776,505	-5.3%	-1.2%
Pick 3 Sum It Up	1,324,150	1,267,493	1,158,355	-165,795	-109,139	-12.5%	-8.6%
Cash Five	15,369,689	15,233,008	13,251,851	-2,117,838	-1,981,157	-13.8%	-13.0%
Texas Two Step	10,717,488	15,037,730	12,205,400	1,487,912	-2,832,330	13.9%	-18.8%
Mega Millions	31,091,063	32,569,410	25,284,403	-5,806,660	-7,285,007	-18.7%	-22.4%
Megaplier	7,033,936	7,457,648	5,855,816	-1,178,120	-1,601,832	-16.7%	-21.5%
Daily 4	13,439,595	14,601,435	16,178,720	2,739,125	1,577,285	20.4%	10.8%
Daily 4 Sum It Up	1,056,943	1,097,247	1,093,564	36,621	-3,684	3.5%	-0.3%
Powerball	21,015,946	31,558,861	49,150,897	28,134,951	17,592,036	133.9%	55.7%
Power Play	5,018,369	6,796,908	5,767,043	748,674	-1,029,865	14.9%	-15.2%
All or Nothing	-	-	23,059,839	23,059,839	23,059,839	-	-
Total	\$ 849,737,720	\$ 887,980,899	\$ 946,210,828	\$ 96,473,108	\$ 58,229,929	11.4%	6.6%

* 3 extra days

** 2 extra days

Texas Lottery Commission
Fiscal Year to Date Cumulative Average Sales Comparison
Unaudited

Through the week ending 11/24/2012 (13 weeks)

Sales by Game	FY 2011	FY 2012	FY 2013
Instant	\$ 7,243,580	\$ 7,562,769	\$ 8,163,773
Lotto Texas	467,316	482,037	442,326
Pick 3	739,906	717,966	725,724
Pick 3 Sum It Up	15,047	14,569	13,628
Cash Five	174,656	175,092	155,904
Texas Two Step	121,790	172,847	143,593
Mega Millions	353,308	374,361	297,464
Megaplier	79,931	85,720	68,892
Daily 4	152,723	167,833	190,338
Daily 4 Sum It Up	12,011	12,612	12,865
Powerball	238,818	362,746	578,246
Power Play	57,027	78,125	67,848
All or Nothing	-	-	299,478 *
Total	\$ <u>9,656,110</u>	\$ <u>10,206,677</u>	\$ <u>11,160,078</u>
	thru 11/27/2010 88 days	thru 11/26/2011 87 days	thru 11/24/2012 85 days * 77 days

Texas Lottery Commission
Fiscal Year Over Year Change in Sales
Unaudited
FY 2013 Compared to FY 2012

Week	FY 2013 Week Ending	INSTANT TICKETS				DRAW GAMES				TOTAL SALES			
		FY 2013	FY 2012	Difference	% change - Cumulative Sales	FY 2013	FY 2012	Difference	% change - Cumulative Sales	FY 2013	FY 2012	Difference	% change - Cumulative Sales
1	9/1/2012**	\$9,611,328	\$25,147,181	(\$15,535,853)	-61.8%	\$3,712,535	\$9,704,561	(\$5,992,026)	-61.7%	\$13,323,863	\$34,851,742	(\$21,527,879)	-61.8%
2	9/8/2012	\$56,941,761	\$50,591,068	\$6,350,693	12.6%	\$19,305,417	\$17,681,853	\$1,623,564	9.2%	\$76,247,178	\$68,272,921	\$7,974,257	11.7%
3	9/15/2012	\$56,302,875	\$49,835,063	\$6,467,812	13.0%	\$20,857,230	\$16,842,326	\$4,014,904	23.8%	\$77,160,105	\$66,677,389	\$10,482,716	15.7%
4	9/22/2012	\$54,974,438	\$49,777,138	\$5,197,300	10.4%	\$20,570,277	\$17,504,800	\$3,065,477	17.5%	\$75,544,715	\$67,281,938	\$8,262,777	12.3%
5	9/29/2012	\$54,606,674	\$51,040,274	\$3,566,400	7.0%	\$20,462,690	\$18,653,100	\$1,809,591	9.7%	\$75,069,364	\$69,693,374	\$5,375,991	7.7%
6	10/6/2012	\$59,223,327	\$53,715,157	\$5,508,170	10.3%	\$19,279,973	\$17,225,680	\$2,054,293	11.9%	\$78,503,300	\$70,940,837	\$7,562,463	10.7%
7	10/13/2012	\$57,075,606	\$51,942,121	\$5,133,485	9.9%	\$18,638,467	\$17,854,980	\$783,487	4.4%	\$75,714,073	\$69,797,101	\$5,916,972	8.5%
8	10/20/2012	\$56,630,134	\$52,837,769	\$3,792,365	7.2%	\$18,998,943	\$19,558,519	(\$559,577)	-2.9%	\$75,629,077	\$72,396,288	\$3,232,789	4.5%
9	10/27/2012	\$55,789,743	\$52,206,644	\$3,583,099	6.9%	\$20,130,190	\$21,504,565	(\$1,374,376)	-6.4%	\$75,919,933	\$73,711,209	\$2,208,724	3.0%
10	11/3/2012	\$58,142,777	\$56,265,310	\$1,877,467	3.3%	\$20,638,008	\$20,870,086	(\$232,079)	-1.1%	\$78,780,785	\$77,135,396	\$1,645,389	2.1%
11	11/10/2012	\$57,484,804	\$55,682,645	\$1,802,159	3.2%	\$20,862,872	\$17,862,404	\$3,000,468	16.8%	\$78,347,676	\$73,545,049	\$4,802,627	6.5%
12	11/17/2012	\$55,805,228	\$54,978,079	\$827,149	1.5%	\$21,660,705	\$17,879,985	\$3,780,721	21.1%	\$77,465,933	\$72,858,064	\$4,607,870	6.3%
13	11/24/2012	\$61,331,977	\$53,942,448	\$7,389,529	13.7%	\$27,172,853	\$16,877,145	\$10,295,708	61.0%	\$88,504,830	\$70,819,593	\$17,685,237	25.0%
14	12/1/2012		\$57,153,469				\$18,298,636				\$75,452,105		
15	12/8/2012		\$55,318,284				\$19,033,326				\$74,351,610		
16	12/15/2012		\$58,612,629				\$20,045,279				\$78,657,908		
17	12/22/2012		\$60,628,256				\$22,572,986				\$83,201,242		
18	12/29/2012		\$63,065,007				\$19,948,521				\$83,013,528		
19	1/5/2013		\$60,479,896				\$17,331,888				\$77,811,784		
20	1/12/2013		\$57,689,526				\$17,568,732				\$75,258,258		
21	1/19/2013		\$58,704,854				\$19,886,540				\$78,591,394		
22	1/26/2013		\$57,611,325				\$20,641,697				\$78,253,022		
23	2/2/2013		\$65,553,366				\$23,689,855				\$89,243,221		
24	2/9/2013		\$75,070,485				\$28,361,583				\$103,432,068		
25	2/16/2013		\$66,679,947				\$19,588,615				\$86,268,562		
26	2/23/2013		\$64,868,899				\$19,965,388				\$84,834,287		
27	3/2/2013		\$67,135,065				\$20,947,181				\$88,082,246		
28	3/9/2013		\$68,299,006				\$22,152,639				\$90,451,645		
29	3/16/2013		\$65,013,692				\$23,351,718				\$88,365,410		
30	3/23/2013		\$64,035,255				\$27,416,609				\$91,451,864		
31	3/30/2013		\$65,135,991				\$84,628,987				\$149,764,978		
32	4/6/2013		\$66,860,957				\$19,899,400				\$86,760,357		
33	4/13/2013		\$64,028,898				\$20,220,141				\$84,249,039		
34	4/20/2013		\$63,623,892				\$20,974,282				\$84,598,174		
35	4/27/2013		\$61,743,623				\$20,267,388				\$82,011,011		
36	5/4/2013		\$64,851,962				\$20,642,982				\$85,494,944		
37	5/11/2013		\$65,472,556				\$19,140,768				\$84,613,324		
38	5/18/2013		\$60,572,658				\$18,342,814				\$78,915,472		
39	5/25/2013		\$58,959,028				\$18,618,060				\$77,577,088		
40	6/1/2013		\$57,409,086				\$19,014,645				\$76,423,731		
41	6/8/2013		\$59,845,545				\$20,527,958				\$80,373,503		
42	6/15/2013		\$57,021,498				\$19,386,186				\$76,407,684		

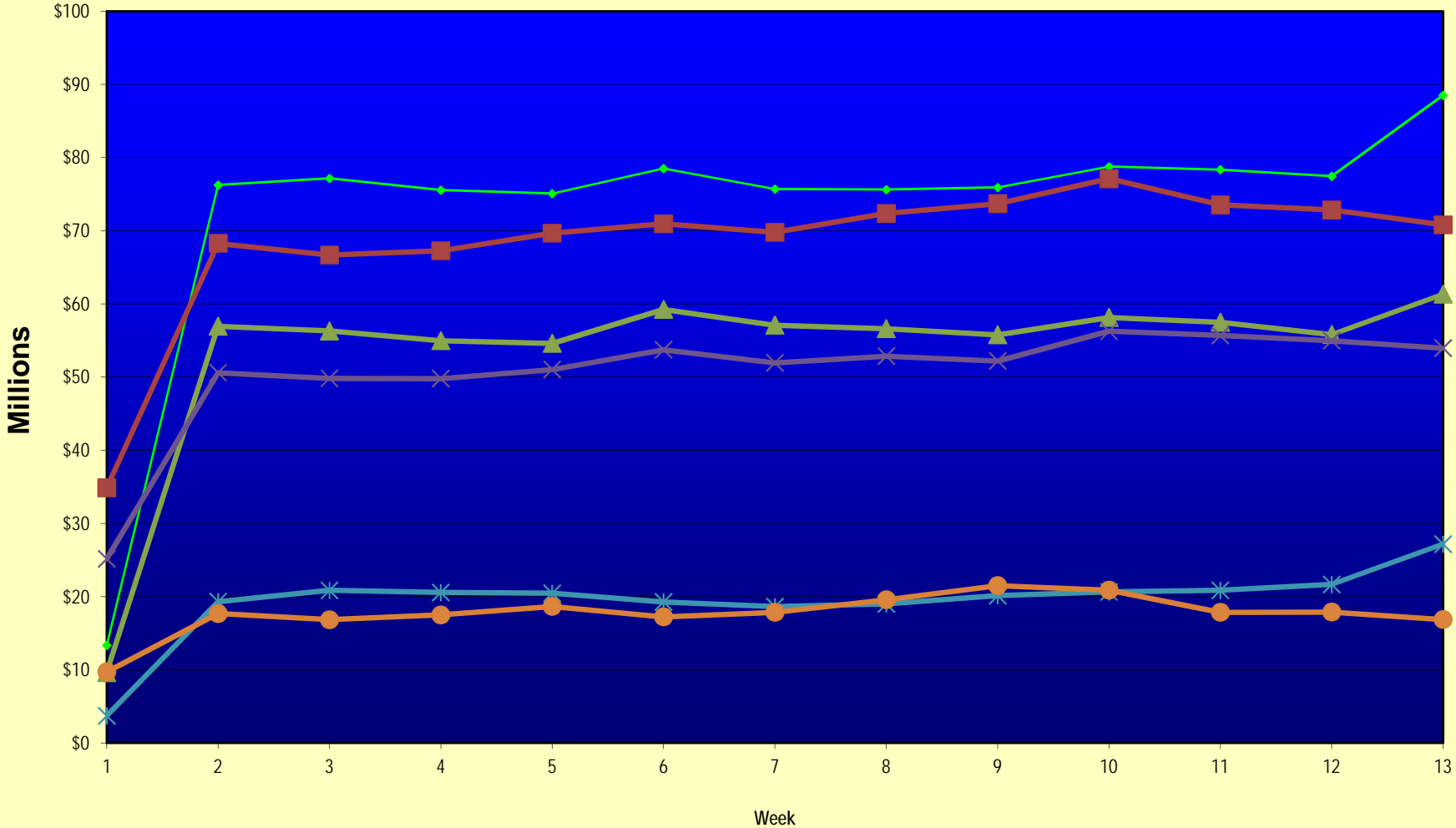
Note: Week 1 is not a full week of sales as this report is prepared on a Fiscal Year basis.

Texas Lottery Commission
Fiscal Year Over Year Change in Sales
Unaudited
FY 2013 Compared to FY 2012

Week	FY 2013 Week Ending	INSTANT TICKETS				DRAW GAMES				TOTAL SALES			
		FY 2013	FY 2012	Difference	% change - Cumulative Sales	FY 2013	FY 2012	Difference	% change - Cumulative Sales	FY 2013	FY 2012	Difference	% change - Cumulative Sales
43	6/22/2013		\$57,892,076				\$17,594,154				\$75,486,230		
44	6/29/2013		\$57,497,435				\$18,153,658				\$75,651,093		
45	7/6/2013		\$60,345,000				\$19,059,152				\$79,404,152		
46	7/13/2013		\$57,683,321				\$18,751,043				\$76,434,364		
47	7/20/2013		\$57,083,343				\$18,769,201				\$75,852,544		
48	7/27/2013		\$54,006,781				\$18,934,103				\$72,940,884		
49	8/3/2013		\$56,557,409				\$20,206,705				\$76,764,114		
50	8/10/2013		\$57,799,452				\$22,832,120				\$80,631,572		
51	8/17/2013		\$54,845,724				\$25,435,624				\$80,281,348		
52	8/24/2013		\$55,661,277				\$17,524,474				\$73,185,751		
	8/31/2013		\$47,363,984				\$14,929,528				\$62,293,512		
Total thru Current Week		\$693,920,672	\$657,960,897	\$35,959,775	5.5%	\$252,290,156	\$230,020,002	\$22,270,154	9.7%	\$946,210,828	\$887,980,899	\$58,229,929	6.6%
Fiscal Year Total		\$693,920,672	\$3,086,141,354			\$252,290,156	\$1,104,674,559			\$946,210,828	\$4,190,815,913		

** FY 2012 includes 3 days; FY 2013 includes 1 day.

Texas Lottery Commission Fiscal Year Over Year Change in Sales



◆ Total Sales 2013
 ■ Total Sales 2012
 ▲ Instant Tickets 2013
 × Instant Tickets 2012
 ✱ Draw Games 2013
 ● Draw Games 2012

Note: Week 1 is not a full week of sales as this report is prepared on a Fiscal Year basis.

Texas Lottery Commission
Instant Tickets by Price Point
Sales, Prize Expense, Sales Contribution and Payout Percentage With Year Over Year Changes
Unaudited

Fiscal Year	Price Point	# of Active Games	FY Sales	% of Instant Ticket Sales	Year over Year Change in Sales	FY Prize Expense	Year over Year Change in Prize Expense	FY Sales Contribution	Year over Year Change in Contribution	Average Prize Payout %	Year over Year Change in Payout %
2012	\$1.00	24	46,915,294	7.1%		28,714,210		18,201,084		61.2%	0.7%
thru	\$2.00	25	91,650,706	13.9%		59,604,067		32,046,639		65.0%	-0.8%
11/26/2011	\$3.00	14	81,943,383	12.5%		53,778,548		28,164,835		65.6%	0.1%
	\$5.00	31	202,660,310	30.8%		137,787,540		64,872,770		68.0%	0.1%
	\$7.00	4	16,053,324	2.4%		10,916,121		5,137,203		68.0%	0.0%
	\$10.00	13	108,220,280	16.4%		76,258,629		31,961,651		70.5%	-0.8%
	\$20.00	5	92,229,500	14.0%		68,790,479		23,439,021		74.6%	-0.1%
	\$50.00	1	18,288,100	2.8%		14,204,856		4,083,244		77.7%	0.1%
Total		117	\$657,960,897			\$450,054,450		\$207,906,447		68.4%	-0.1%
2013	\$1.00	24	41,145,228	5.9%		25,108,758		16,036,470		61.0%	0.7%
thru	\$2.00	26	88,146,288	12.7%		57,308,766		30,837,522		65.0%	-0.1%
11/24/2012	\$3.00	14	90,806,667	13.1%		59,559,106		31,247,561		65.6%	0.1%
	\$5.00	40	210,748,040	30.4%		143,070,854		67,677,186		67.9%	-0.2%
	\$7.00	2	12,363,169	1.8%		8,402,829		3,960,340		68.0%	0.0%
	\$10.00	11	117,164,830	16.9%		82,797,512		34,367,318		70.7%	-0.3%
	\$20.00	7	105,539,300	15.2%		78,998,465		26,540,835		74.9%	0.1%
	\$50.00	3	28,007,150	4.0%		21,745,916		6,261,234		77.6%	0.0%
Total		127	\$693,920,672			\$476,992,206		\$216,928,466		68.7%	0.2%
Variance	\$1.00	0	-5,770,066		-12.3%	-3,605,452	-12.6%	-2,164,614	-11.9%	-0.18%	
2013 to	\$2.00	1	-3,504,418		-3.8%	-2,295,301	-3.9%	-1,209,117	-3.8%	-0.02%	
2012	\$3.00	0	8,863,284		10.8%	5,780,559	10.7%	3,082,725	10.9%	-0.04%	
	\$5.00	9	8,087,730		4.0%	5,283,315	3.8%	2,804,415	4.3%	-0.10%	
	\$7.00	-2	-3,690,155		-23.0%	-2,513,292	-23.0%	-1,176,863	-22.9%	-0.03%	
	\$10.00	-2	8,944,550		8.3%	6,538,883	8.6%	2,405,667	7.5%	0.20%	
	\$20.00	2	13,309,800		14.4%	10,207,985	14.8%	3,101,815	13.2%	0.27%	
	\$50.00	2	9,719,050		53.1%	7,541,060	53.1%	2,177,990	53.3%	-0.03%	
Total		10	\$35,959,775		5.5%	\$26,937,756	6.0%	\$9,022,019	4.3%	0.34%	

Notes - Instant Ticket Variances

Texas Lottery Commission
Instant Tickets by Price Point
Sales, Prize Expense, Sales Contribution and Payout Percentage With Year Over Year Changes
Unaudited

			FY 2013		FY 2012	Difference
Sales	\$1 - \$7	1	\$443,209,392		\$439,223,017	\$3,986,375
Prize Exp.	\$1 - \$7	1	\$293,450,314		\$290,800,486	\$2,649,828
Sales Cont.	\$1 - \$7	1	\$149,759,078		\$148,422,531	\$1,336,547
Prize Exp. %	\$1 - \$7	1	66.2%		66.2%	0.0%
			FY 2013		FY 2012	Difference
Sales	\$10 - \$50	2	\$250,711,280		\$218,737,880	\$31,973,400
Prize Exp.	\$10 - \$50	2	\$183,541,892		\$159,253,964	\$24,287,928
Sales Cont.	\$10 - \$50	1	\$67,169,388		\$59,483,916	\$7,685,472
Prize Exp. %	\$10 - \$50	2	73.2%		72.8%	0.4%
			FY 2013		FY 2012	Difference
Sales	Instant		\$693,920,672		\$657,960,897	\$35,959,775
Prize Exp.	Instant		\$476,992,206		\$450,054,450	\$26,937,756
Sales Cont.	Instant		\$216,928,466		\$207,906,447	\$9,022,019
Prize Exp. %	Instant		68.7%		68.4%	0.3%

			FY 2013		FY 2012	Difference
Sales	\$1 - \$10		\$560,374,222		\$547,443,297	\$12,930,925
Prize Exp.	\$1 - \$10		\$376,247,825		\$367,059,115	\$9,188,711
Sales Cont.	\$1 - \$10		\$184,126,397		\$180,384,182	\$3,742,214
Prize Exp. %	\$1 - \$10		67.1%		67.0%	0.1%
			FY 2013		FY 2012	Difference
Sales	\$20 - \$50		\$133,546,450		\$110,517,600	\$23,028,850
Prize Exp.	\$20 - \$50		\$100,744,381		\$82,995,335	\$17,749,046
Sales Cont.	\$20 - \$50		\$32,802,069		\$27,522,265	\$5,279,804
Prize Exp. %	\$20 - \$50		75.4%		75.1%	0.3%
			FY 2013		FY 2012	Difference
Sales	Instant		\$693,920,672		\$657,960,897	\$35,959,775
Prize Exp.	Instant		\$476,992,206		\$450,054,450	\$26,937,756
Sales Cont.	Instant		\$216,928,466		\$207,906,447	\$9,022,019
Prize Exp. %	Instant		68.7%		68.4%	0.3%

Texas Lottery Commission
Weekly Sales Summary
& Comparison to Previous Week
 Unaudited

	Week Ending 11/24/2012		Week Ending 11/17/2012			
	<u>THIS WEEK</u>	% of Sales	<u>LAST WEEK</u>	% of Sales	<u>\$ change</u>	<u>% change</u>
Total Sales	<u>\$88,504,830</u>		<u>\$77,465,933</u>		<u>\$11,038,897</u>	14.25%
Instant Tickets	<u>\$61,331,977</u>	69.3%	<u>\$55,805,228</u>	72.0%	<u>\$5,526,749</u>	9.90%
Lotto	\$2,768,876	3.1%	\$2,599,190	3.4%	\$169,686	6.53%
Pick 3	\$5,086,879	5.7%	\$5,248,059	6.8%	-\$161,181	-3.07%
Pick 3 Sum It Up	\$91,409	0.1%	\$91,989	0.1%	-\$580	-0.63%
Cash Five	\$1,021,878	1.2%	\$1,059,723	1.4%	-\$37,845	-3.57%
Texas Two Step	\$883,407	1.0%	\$920,319	1.2%	-\$36,912	-4.01%
Mega Millions	\$2,003,365	2.3%	\$1,841,571	2.4%	\$161,794	8.79%
Megaplier	\$472,723	0.5%	\$440,783	0.6%	\$31,940	7.25%
Daily 4	\$1,300,693	1.5%	\$1,345,121	1.7%	-\$44,429	-3.30%
Daily 4 Sum It Up	\$85,037	0.1%	\$88,391	0.1%	-\$3,354	-3.79%
Powerball	\$10,768,045	12.2%	\$5,638,425	7.3%	\$5,129,620	90.98%
Power Play	\$1,053,006	1.2%	\$615,323	0.8%	\$437,683	71.13%
All or Nothing	\$1,637,536	1.9%	\$1,771,812	2.3%	-\$134,276	-7.58%
Total Draw Game Sales	<u>\$27,172,853</u>		<u>\$21,660,705</u>		<u>\$5,512,148</u>	25.45%

* Totals may not sum due to rounding.

Texas Lottery Commission
Weekly Sales Summary
Unaudited

INSTANT TICKETS
TOP TEN SELLING GAMES

For the Week Ending: 11/24/12

Rank	Price Point	Game	Sales (Millions)
1	\$ 5	HAPPY HOLIDAYS	\$ 3.482
2	\$ 10	HOLIDAY DOUBLER	\$ 3.315
3	\$ 20	MERRY MILLIONS	\$ 3.130
4	\$ 20	\$500 MILLION EXTREME CASH BLAST	\$ 2.563
5	\$ 3	LOTERIA	\$ 2.143
6	\$ 10	\$200 MILLION CASH SPECTACULAR	\$ 2.028
7	\$ 3	JINGLE BELL CROSSWORD	\$ 1.984
8	\$ 5	NUTCRACKER CASH	\$ 1.833
9	\$ 50	\$7,500,000 FORTUNE	\$ 1.831
10	\$ 3	BONUS CASHWORD	\$ 1.782

Texas Lottery Commission
Prize Payout Tracking Report
Unaudited

Through Week Ending 11/24/12

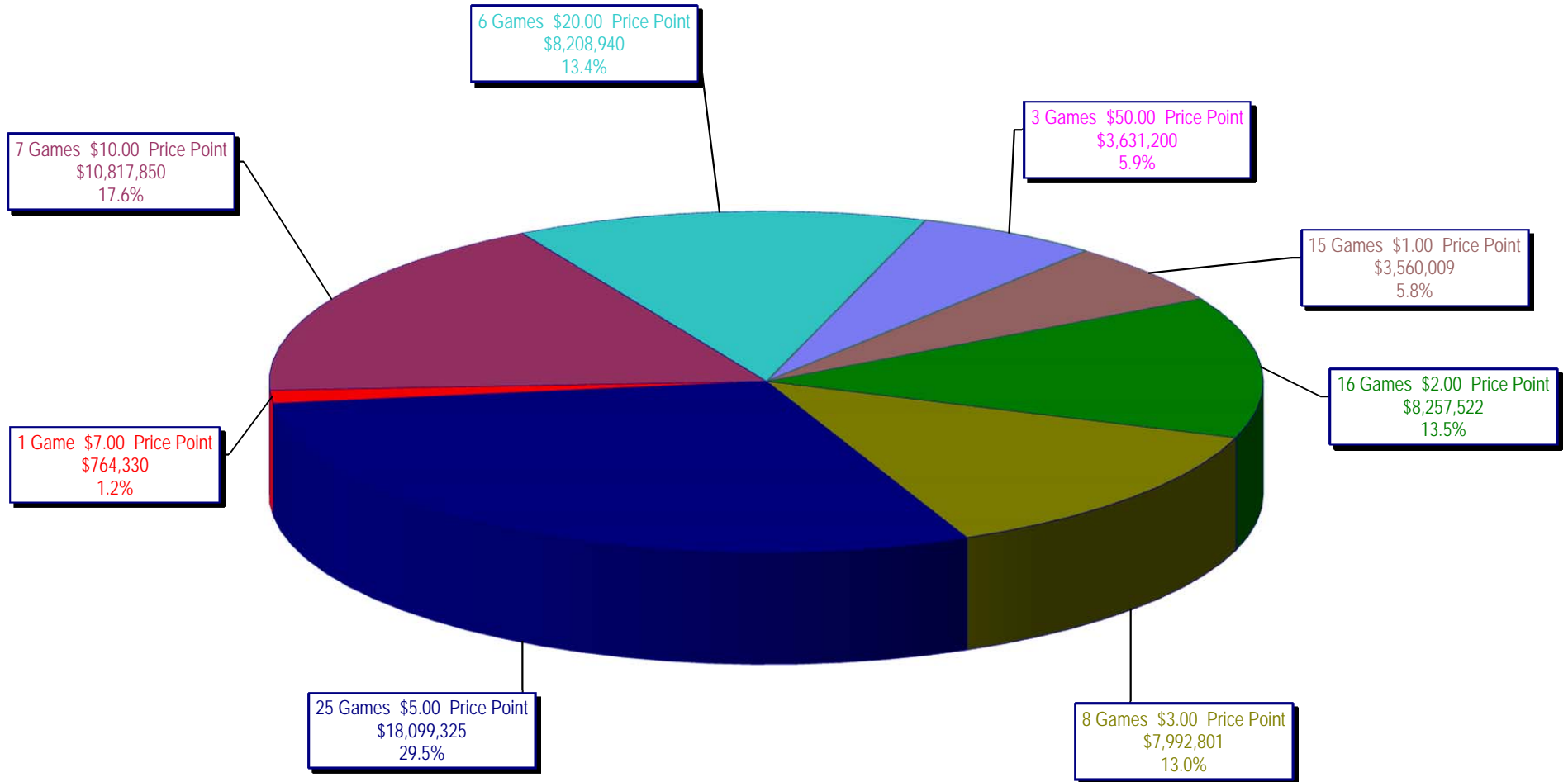
Draw Game Sales

		FY Sales Through Week Ending 11/24/2012		FY Prize Expense Through Week Ending 11/24/2012	Actual* Prize Payout	Base Payout (Prize Pool)
Lotto	\$	37,597,701	\$	25,672,357	68.28%	50.00%
Pick 3		61,686,568		35,232,190	57.11%	50.00%
Pick 3 Sum It Up		1,158,355		544,915	47.04%	50.00%
Cash Five		13,251,851		6,627,873	50.01%	50.00%
Texas Two Step		12,205,400		6,170,663	50.56%	50.00%
Mega Millions		25,284,403		12,274,527	48.55%	50.00%**
Megaplier		5,855,816		3,046,826	52.03%	N/A
Daily 4		16,178,720		7,014,900	43.36%	50.00%
Daily 4 Sum It Up		1,093,564		419,200	38.33%	50.00%
Powerball		49,150,897		25,005,324	50.87%	50.00%**
Power Play		5,767,043		3,278,746	56.85%	N/A
All or Nothing		23,059,839		13,902,766	60.29%	50.00%
Totals	\$	252,290,156	\$	139,190,286	55.17%	

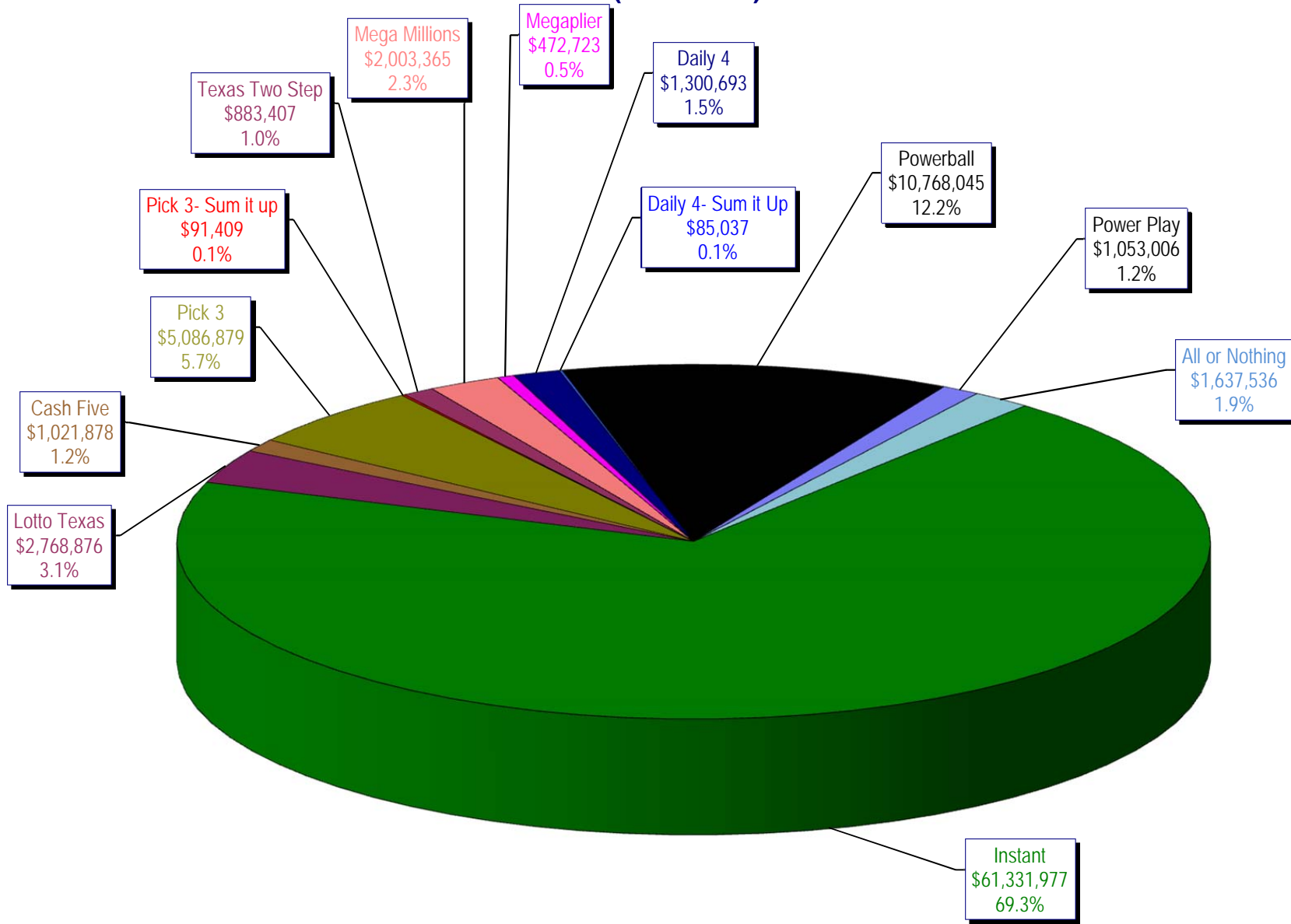
* Before Unclaimed Prizes

** Estimated; depends on # of guaranteed prizes won in Texas

Texas Lottery Commission
Instant Ticket Sales
For the Week Ending 11/24/12
(Unaudited)



Texas Lottery Commission
All Game Sales
For the Week Ending 11/24/12
(Unaudited)



Texas Lottery Commission - Weekly Sales Summary for FY 2013 (Unaudited)

Week Ended	Instant Games	New Games & Dates	Lotto Texas	Jackpot W S	Pick 3	Pick 3 Sum It Up	Cash Five	Texas Two Step	Jackpot M TH	Mega Millions	Jackpot T F	Megaplier	Daily 4	Daily 4 Sum It Up	Powerball	Jackpot W S	Power Play	All or Nothing	Total	Per Cap.
9/1/2012	56,975,312	1446 (\$1, N); 1444 (\$2, N) - 08/27/12	2,972,415	12 13	4,967,337	105,441	1,198,597	1,455,689	500 675	2,769,421	73 83	612,072	1,419,103	97,265	2,680,694	70 80	364,030		75,617,375	2.95
9/8/2012	56,941,761	1440 (\$2, N); 1458 (\$3, N); 1459 (\$5, N) - 09/03/12	3,005,564	14 15	5,112,132	106,959	1,185,494	1,179,003	875 200	3,140,536	93 105	665,392	1,412,279	99,861	3,002,910	90 100	395,287		76,247,178	2.97
9/15/2012	56,302,875	1452 (\$3, N) - 09/10/12	2,999,894	16 17	4,785,209	95,720	1,118,519	894,412	225 200	2,684,227	120 12	580,869	1,290,478	90,795	3,373,296	110 125	417,470	2,526,342	77,160,105	3.01
9/22/2012	54,974,438	1460 (\$1, N); 1461 (\$5, N) - 09/17/12	2,986,898	18 19	4,611,684	89,173	1,091,440	986,264	225 325	1,874,336	15 12	452,082	1,258,191	86,390	4,122,790	149 174	479,344	2,531,686	75,544,715	2.94
9/29/2012	54,606,674	1462 (\$2, N); 1472 (\$10, N) - 09/24/12	3,047,519	20 21	4,708,250	90,752	1,077,739	1,313,257	475 625	1,884,366	14 21	452,334	1,278,847	87,211	3,779,359	200 40	445,091	2,297,966	75,069,364	2.92
10/6/2012	59,223,327	1464 (\$5, N) - 10/01/12	3,164,231	22 23	4,947,571	96,251	1,121,146	1,188,386	800 200	2,055,918	28 36	482,303	1,310,612	89,270	2,266,428	50 40	312,877	2,244,980	78,503,300	3.06
10/13/2012	57,075,606	1465 (\$1, N); 1466 (\$20, N) - 10/08/2012	3,133,742	24 25	4,793,793	89,663	1,074,687	865,146	225 200	2,163,099	45 53	492,614	1,261,858	84,585	2,241,120	50 60	309,684	2,128,476	75,714,073	2.95
10/20/2012	56,630,134	1467 (\$1, N); 1468 (\$5, N) - 10/15/12	3,172,820	26 27	4,959,071	88,413	1,074,980	970,100	225 325	1,984,966	61 12	466,730	1,296,602	84,868	2,447,518	70 80	328,436	2,124,439	75,629,077	2.95
10/27/2012	55,789,743	1469 (\$2, N); 1470 (\$10, N) - 10/22/2012	3,204,694	28 29	5,550,567	96,242	1,063,201	1,226,578	450 600	1,778,725	13 21	430,528	1,381,019	91,618	2,914,062	90 100	371,273	2,021,684	75,919,933	2.96
11/3/2012	58,142,777	1503 (\$5, N) - 10/29/2012	3,392,650	30 31	5,501,964	101,742	1,078,593	860,073	200 225	1,950,117	27 32	462,385	1,393,099	93,773	3,466,242	110 124	424,170	1,913,200	78,780,785	3.07
11/10/2012	57,484,804	1475 (\$1, N); 1476 (\$3, N) - 11/05/2012	3,061,999	32 4	5,468,924	100,767	1,083,928	837,666	200 200	1,783,099	12 13	430,343	1,402,194	94,451	4,246,246	143 168	491,538	1,861,718	78,347,676	3.05
11/17/2012	55,805,228	1477 (\$2, N); 1478 (\$5, N) - 11/12/2012	2,599,190	5 6	5,248,059	91,989	1,059,723	920,319	225 300	1,841,571	19 26	440,783	1,345,121	88,391	5,638,425	185 214	615,323	1,771,812	77,465,933	3.02
11/24/2012	61,331,977	1394 (\$50, N) - 11/19/2012	2,768,876	7 8	5,086,879	91,409	1,021,878	883,407	425 200	2,003,365	33 41	472,723	1,300,693	85,037	10,768,045	250 325	1,053,006	1,637,536	88,504,830	3.45
weekly change	9.9%		6.5%		-3.1%	-0.6%	-3.6%	-4.0%		8.8%		7.2%	-3.3%	-3.8%	91.0%		71.1%	-7.6%		14.3%
	SALES		SALES		SALES	SALES	SALES	SALES		SALES		SALES	SALES	SALES	SALES		SALES		SALES	% of Sales
Calendar Year to date	2,827,323,484		148,343,538		247,169,176	5,047,289	57,319,970	56,685,222		183,408,845		35,365,164	63,819,404	4,448,390	179,613,989		22,765,142	23,059,839	3,854,369,450	100.0%
Fiscal Year to date 2013	693,920,672		37,597,701		61,686,568	1,158,355	13,251,851	12,205,400		25,284,403		5,855,816	16,178,720	1,093,564	49,150,897		5,767,043	23,059,839	946,210,828	100.0%