



*WEEKLY SALES SUMMARY*

Unaudited

[Week Ending: 11/26/2011](#)

Texas Lottery Commission  
Fiscal Year to Date Sales Comparison  
Unaudited

Through the week ending 11/26/2011 (13 weeks)

Sales by Game	FY 2010 *	FY 2011 **	FY 2012	\$ Change		% Change	
				FY 2012 to FY 2010	FY 2012 to FY 2011 to	FY 2012 to FY 2010	FY 2012 to FY 2011
Instants	\$ 657,426,899	\$ 637,435,036	\$ 657,960,897	\$ 533,998	\$ 20,525,861	0.1%	3.2%
Lotto Texas	72,183,898	41,123,781	41,937,189	-30,246,709	813,408	-41.9%	2.0%
Pick 3	65,161,002	65,111,725	62,463,073	-2,697,929	-2,648,652	-4.1%	-4.1%
Pick 3 Sum It Up	1,307,795	1,324,150	1,267,493	-40,302	-56,657	-3.1%	-4.3%
Cash Five	16,436,288	15,369,689	15,233,008	-1,203,280	-136,681	-7.3%	-0.9%
Texas Two Step	10,468,144	10,717,488	15,037,730	4,569,586	4,320,242	43.7%	40.3%
Mega Millions	46,157,331	31,091,063	32,569,410	-13,587,921	1,478,347	-29.4%	4.8%
Megaplier	10,443,048	7,033,936	7,457,648	-2,985,400	423,712	-28.6%	6.0%
Daily 4	12,444,137	13,439,595	14,601,435	2,157,298	1,161,840	17.3%	8.6%
Daily 4 Sum It Up	1,216,748	1,056,943	1,097,247	-119,501	40,305	-9.8%	3.8%
Powerball	-	21,015,946	31,558,861	31,558,861	10,542,915	-	-
Power Play	-	5,018,369	6,796,908	6,796,908	1,778,539	-	-
<b>Total</b>	<b>\$ 893,245,290</b>	<b>\$ 849,737,720</b>	<b>\$ 887,980,899</b>	<b>\$ -5,264,392</b>	<b>\$ 38,243,179</b>	<b>-0.6%</b>	<b>4.5%</b>

\* 2 extra days

\*\* 1 extra day

Texas Lottery Commission  
 Fiscal Year to Date Cumulative Average Sales Comparison  
 Unaudited

Through the week ending 11/26/2011 (13 weeks)

Sales by Game	FY 2010	FY 2011	FY 2012
Instant	\$ 7,386,819	\$ 7,243,580	\$ 7,562,769
Lotto Texas	811,055	467,316	482,037
Pick 3	732,146	739,906	717,966
Pick 3 Sum It Up	14,694	15,047	14,569
Cash Five	184,677	174,656	175,092
Texas Two Step	117,620	121,790	172,847
Mega Millions	518,622	353,308	374,361
Megaplier	117,338	79,931	85,720
Daily 4	139,822	152,723	167,833
Daily 4 Sum It Up	13,671	12,011	12,612
Powerball	-	238,818	362,746
Power Play	-	57,027	78,125
<b>Total</b>	<b>\$ <u>10,036,464</u></b>	<b>\$ <u>9,656,110</u></b>	<b>\$ <u>10,206,677</u></b>
	thru 11/28/2009 89 days	thru 11/27/2010 88 days	thru 11/26/2011 87 days

Texas Lottery Commission  
Fiscal Year Over Year Change in Sales  
Unaudited  
FY 2012 Compared to FY 2011

Week	FY 2012 Week Ending	INSTANT TICKETS				ON-LINE GAMES				TOTAL SALES			
		FY 2012	FY 2011	Difference	% change - Cumulative Sales	FY 2012	FY 2011	Difference	% change - Cumulative Sales	FY 2012	FY 2011	Difference	% change - Cumulative Sales
1	9/3/2011**	\$25,147,181	\$31,659,033	(\$6,511,852)	-20.6%	\$9,704,561	\$11,430,717	(\$1,726,156)	-15.1%	\$34,851,742	\$43,089,750	(\$8,238,008)	-19.1%
2	9/10/2011	\$50,591,068	\$48,912,598	\$1,678,470	3.4%	\$17,681,853	\$16,398,160	\$1,283,693	7.8%	\$68,272,921	\$65,310,758	\$2,962,163	4.5%
3	9/17/2011	\$49,835,063	\$48,988,241	\$846,822	1.7%	\$16,842,326	\$17,166,827	(\$324,501)	-1.9%	\$66,677,389	\$66,155,068	\$522,321	0.8%
4	9/24/2011	\$49,777,138	\$48,471,310	\$1,305,828	2.7%	\$17,504,800	\$15,623,813	\$1,880,987	12.0%	\$67,281,938	\$64,095,123	\$3,186,815	5.0%
5	10/1/2011	\$51,040,274	\$50,145,138	\$895,136	1.8%	\$18,653,100	\$16,453,939	\$2,199,161	13.4%	\$69,693,374	\$66,599,077	\$3,094,297	4.6%
6	10/8/2011	\$53,715,157	\$50,918,591	\$2,796,566	5.5%	\$17,225,680	\$16,974,963	\$250,717	1.5%	\$70,940,837	\$67,893,554	\$3,047,283	4.5%
7	10/15/2011	\$51,942,121	\$49,096,011	\$2,846,110	5.8%	\$17,854,980	\$16,661,904	\$1,193,077	7.2%	\$69,797,101	\$65,757,915	\$4,039,187	6.1%
8	10/22/2011	\$52,837,769	\$50,158,946	\$2,678,823	5.3%	\$19,558,519	\$17,374,460	\$2,184,060	12.6%	\$72,396,288	\$67,533,406	\$4,862,883	7.2%
9	10/29/2011	\$52,206,644	\$49,775,287	\$2,431,357	4.9%	\$21,504,565	\$18,402,209	\$3,102,356	16.9%	\$73,711,209	\$68,177,496	\$5,533,713	8.1%
10	11/5/2011	\$56,265,310	\$53,337,848	\$2,927,462	5.5%	\$20,870,086	\$17,321,908	\$3,548,179	20.5%	\$77,135,396	\$70,659,756	\$6,475,641	9.2%
11	11/12/2011	\$55,682,645	\$52,285,479	\$3,397,166	6.5%	\$17,862,404	\$16,388,690	\$1,473,714	9.0%	\$73,545,049	\$68,674,169	\$4,870,880	7.1%
12	11/19/2011	\$54,978,079	\$52,424,036	\$2,554,043	4.9%	\$17,879,985	\$16,138,022	\$1,741,963	10.8%	\$72,858,064	\$68,562,058	\$4,296,006	6.3%
13	11/26/2011	\$53,942,448	\$51,262,518	\$2,679,930	5.2%	\$16,877,145	\$15,967,075	\$910,070	5.7%	\$70,819,593	\$67,229,593	\$3,590,000	5.3%
14	12/3/2011		\$56,385,259				\$17,553,175				\$73,938,434		
15	12/10/2011		\$56,540,048				\$17,703,352				\$74,243,400		
16	12/17/2011		\$57,699,991				\$18,465,282				\$76,165,273		
17	12/24/2011		\$59,800,480				\$19,635,771				\$79,436,251		
18	12/31/2011		\$61,423,121				\$26,122,257				\$87,545,378		
19	1/7/2012		\$60,976,653				\$33,521,570				\$94,498,223		
20	1/14/2012		\$50,099,433				\$17,114,637				\$67,214,070		
21	1/21/2012		\$53,143,646				\$18,091,208				\$71,234,854		
22	1/28/2012		\$54,096,128				\$17,446,156				\$71,542,284		
23	2/4/2012		\$53,433,592				\$17,388,581				\$70,822,173		
24	2/11/2012		\$60,277,094				\$18,233,038				\$78,510,132		
25	2/18/2012		\$61,536,763				\$19,387,518				\$80,924,281		
26	2/25/2012		\$59,046,203				\$20,054,404				\$79,100,607		
27	3/3/2012		\$60,537,060				\$19,478,807				\$80,015,867		
28	3/10/2012		\$59,997,361				\$19,601,658				\$79,599,019		
29	3/17/2012		\$57,835,554				\$21,189,563				\$79,025,117		
30	3/24/2012		\$57,911,940				\$29,729,651				\$87,641,591		
31	3/31/2012		\$60,407,139				\$19,519,264				\$79,926,403		
32	4/7/2012		\$60,704,285				\$19,455,317				\$80,159,602		
33	4/14/2012		\$57,663,398				\$17,866,867				\$75,530,265		
34	4/21/2012		\$56,740,216				\$17,429,326				\$74,169,542		
35	4/28/2012		\$58,042,011				\$17,104,548				\$75,146,559		
36	5/5/2012		\$66,509,159				\$17,744,833				\$84,253,992		
37	5/12/2012		\$53,769,716				\$17,783,942				\$71,553,658		
38	5/19/2012		\$53,704,228				\$18,623,882				\$72,328,110		
39	5/26/2012		\$52,310,134				\$19,115,921				\$71,426,055		
40	6/2/2012		\$53,256,725				\$18,462,603				\$71,719,328		
41	6/9/2012		\$54,293,614				\$17,213,019				\$71,506,633		
42	6/16/2012		\$52,688,230				\$17,534,413				\$70,222,643		

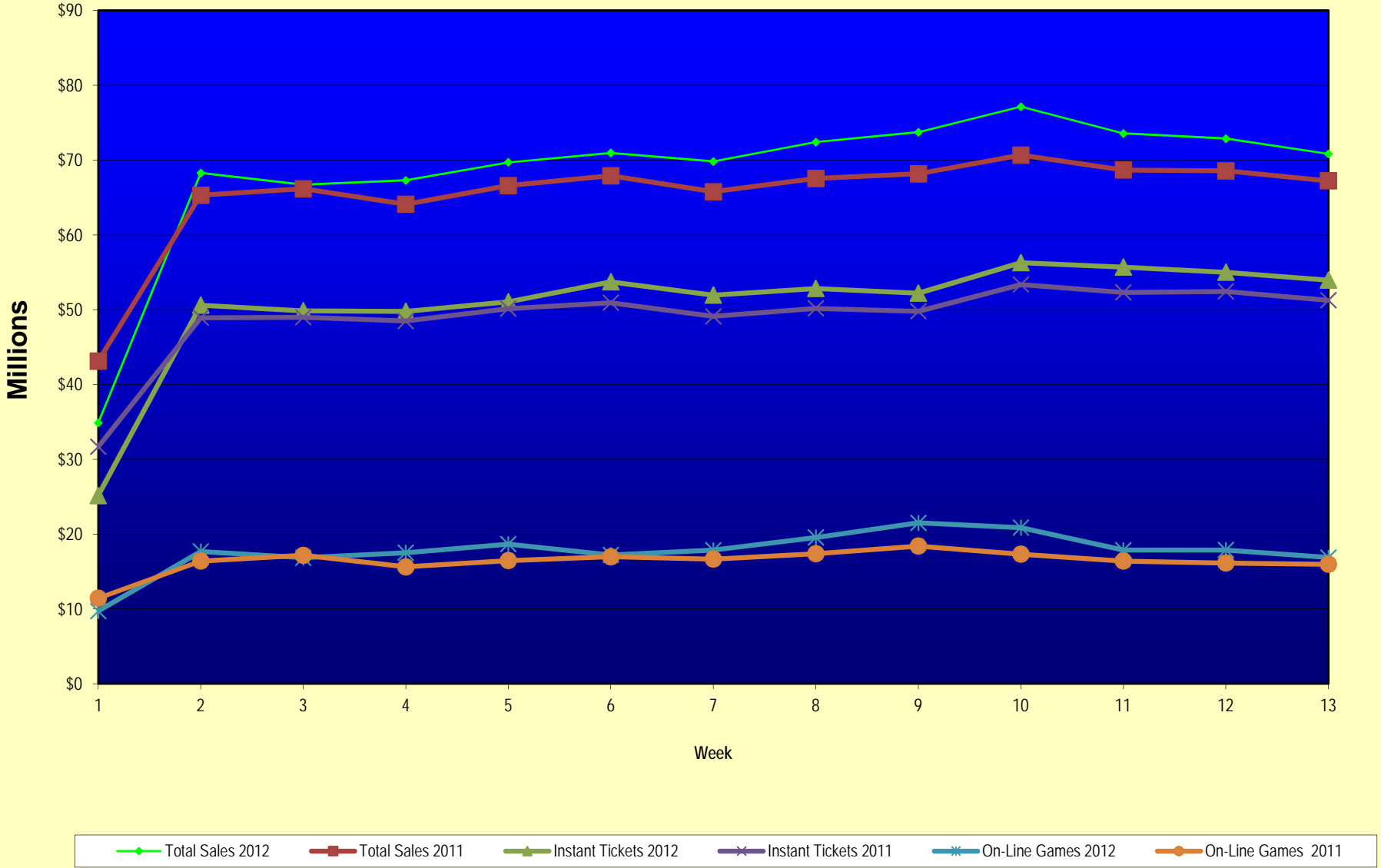
Note: Week 1 is not a full week of sales as this report is prepared on a Fiscal Year basis.

Texas Lottery Commission  
Fiscal Year Over Year Change in Sales  
Unaudited  
FY 2012 Compared to FY 2011

Week	FY 2012 Week Ending	INSTANT TICKETS				ON-LINE GAMES				TOTAL SALES			
		FY 2012	FY 2011	Difference	% change - Cumulative Sales	FY 2012	FY 2011	Difference	% change - Cumulative Sales	FY 2012	FY 2011	Difference	% change - Cumulative Sales
43	6/23/2012		\$53,174,595				\$17,086,937				\$70,261,532		
44	6/30/2012		\$53,687,509				\$18,406,785				\$72,094,294		
45	7/7/2012		\$53,054,685				\$16,211,989				\$69,266,674		
46	7/14/2012		\$51,161,290				\$16,945,733				\$68,107,023		
47	7/21/2012		\$50,807,750				\$17,362,213				\$68,169,963		
48	7/28/2012		\$51,277,179				\$18,870,764				\$70,147,943		
49	8/4/2012		\$53,320,489				\$20,922,034				\$74,242,523		
50	8/11/2012		\$50,914,022				\$19,467,124				\$70,381,146		
51	8/18/2012		\$49,905,898				\$17,419,045				\$67,324,943		
52	8/25/2012		\$49,424,242				\$16,837,474				\$66,261,716		
	8/31/2012		\$27,274,804				\$8,600,118				\$35,874,922		
Total thru Current Week		\$657,960,897	\$637,435,036	\$20,525,861	3.2%	\$230,020,002	\$212,302,684	\$17,717,318	8.3%	\$887,980,899	\$849,737,720	\$38,243,179	4.5%
Fiscal Year Total		\$657,960,897	\$2,842,266,680			\$230,020,002	\$969,003,455			\$887,980,899	\$3,811,270,135		

\*\* FY 2011 includes 4 days; FY 2012 includes 3 days

### Texas Lottery Commission Fiscal Year Over Year Change in Sales



Note: Week 1 is not a full week of sales as this report is prepared on a Fiscal Year basis.

Texas Lottery Commission  
**Instant Tickets by Price Point**  
Sales, Prize Expense, Sales Contribution and Payout Percentage With Year Over Year Changes  
Unaudited

Fiscal Year	Price Point	# of Active Games	FY Sales	% of Instant Ticket Sales	Year over Year Change in Sales	FY Prize Expense	Year over Year Change in Prize Expense	FY Sales Contribution	Year over Year Change in Contribution	Average Prize Payout %	Year over Year Change in Payout %
2011	\$1.00	24	44,744,055	7.0%		27,557,563		17,186,492		61.6%	2.5%
thru	\$2.00	25	95,520,096	15.0%		62,669,553		32,850,543		65.6%	0.7%
11/27/2010	\$3.00	16	77,037,782	12.1%		50,628,517		26,409,265		65.7%	0.2%
	\$5.00	32	202,570,985	31.8%		137,977,092		64,593,893		68.1%	0.1%
	\$7.00	6	28,021,728	4.4%		19,048,055		8,973,673		68.0%	0.0%
	\$10.00	12	82,889,460	13.0%		58,608,245		24,281,215		70.7%	1.1%
	\$20.00	5	83,727,980	13.1%		62,020,402		21,707,578		74.1%	1.3%
	\$50.00	2	22,922,950	3.6%		17,796,181		5,126,769		77.6%	4.1%
<b>Total</b>		<b>122</b>	<b>\$637,435,036</b>			<b>\$436,305,608</b>		<b>\$201,129,428</b>		<b>68.4%</b>	<b>1.0%</b>
2012	\$1.00	24	46,915,294	7.1%		28,714,210		18,201,084		61.2%	0.7%
thru	\$2.00	25	91,650,706	13.9%		59,604,067		32,046,639		65.0%	-0.8%
11/26/2011	\$3.00	14	81,943,383	12.5%		53,778,548		28,164,835		65.6%	0.1%
	\$5.00	31	202,660,310	30.8%		137,787,540		64,872,770		68.0%	0.1%
	\$7.00	4	16,053,324	2.4%		10,916,121		5,137,203		68.0%	0.0%
	\$10.00	13	108,220,280	16.4%		76,258,629		31,961,651		70.5%	-0.8%
	\$20.00	5	92,229,500	14.0%		68,790,479		23,439,021		74.6%	-0.1%
	\$50.00	1	18,288,100	2.8%		14,204,856		4,083,244		77.7%	0.1%
<b>Total</b>		<b>117</b>	<b>\$657,960,897</b>			<b>\$450,054,450</b>		<b>\$207,906,447</b>		<b>68.4%</b>	<b>-0.1%</b>
Variance	\$1.00	0	2,171,239		4.9%	1,156,647	4.2%	1,014,592	5.9%	-0.38%	
2012 to	\$2.00	0	-3,869,390		-4.1%	-3,065,486	-4.9%	-803,904	-2.4%	-0.57%	
2011	\$3.00	-2	4,905,601		6.4%	3,150,031	6.2%	1,755,570	6.6%	-0.09%	
	\$5.00	-1	89,325		0.0%	-189,552	-0.1%	278,877	0.4%	-0.12%	
	\$7.00	-2	-11,968,404		-42.7%	-8,131,934	-42.7%	-3,836,470	-42.8%	0.02%	
	\$10.00	1	25,330,820		30.6%	17,650,384	30.1%	7,680,436	31.6%	-0.24%	
	\$20.00	0	8,501,520		10.2%	6,770,077	10.9%	1,731,443	8.0%	0.51%	
	\$50.00	-1	-4,634,850		-20.2%	-3,591,325	-20.2%	-1,043,525	-20.4%	0.04%	
<b>Total</b>		<b>-5</b>	<b>\$20,525,861</b>		<b>3.2%</b>	<b>\$13,748,842</b>	<b>3.2%</b>	<b>\$6,777,019</b>	<b>3.4%</b>	<b>-0.05%</b>	

Notes - Instant Ticket Variances

Texas Lottery Commission  
**Instant Tickets by Price Point**  
**Sales, Prize Expense, Sales Contribution and Payout Percentage With Year Over Year Changes**  
 Unaudited

			FY 2012		FY 2011	Difference
Sales	\$1 - \$7		\$439,223,017		\$447,894,646	-\$8,671,629
Prize Exp.	\$1 - \$7		\$290,800,486		\$297,880,780	-\$7,080,294
Sales Cont.	\$1 - \$7		\$148,422,531		\$150,013,866	-\$1,591,335
Prize Exp. %	\$1 - \$7		66.2%		66.5%	-0.3%
			FY 2012		FY 2011	Difference
Sales	\$10 - \$50		\$218,737,880		\$189,540,390	\$29,197,490
Prize Exp.	\$10 - \$50		\$159,253,964		\$138,424,828	\$20,829,136
Sales Cont.	\$10 - \$50		\$59,483,916		\$51,115,562	\$8,368,354
Prize Exp. %	\$10 - \$50		72.8%		73.0%	-0.2%
			FY 2012		FY 2011	Difference
Sales	Instant		\$657,960,897		\$637,435,036	\$20,525,861
Prize Exp.	Instant		\$450,054,450		\$436,305,608	\$13,748,842
Sales Cont.	Instant		\$207,906,447		\$201,129,428	\$6,777,019
Prize Exp. %	Instant		68.4%		68.4%	0.0%

			FY 2012		FY 2011	Difference
Sales	\$1 - \$10		\$547,443,297		\$530,784,106	\$16,659,191
Prize Exp.	\$1 - \$10		\$367,059,115		\$356,489,025	\$10,570,090
Sales Cont.	\$1 - \$10		\$180,384,182		\$174,295,081	\$6,089,101
Prize Exp. %	\$1 - \$10		67.0%		67.2%	-0.1%
			FY 2012		FY 2011	Difference
Sales	\$20 - \$50		\$110,517,600		\$106,650,930	\$3,866,670
Prize Exp.	\$20 - \$50		\$82,995,335		\$79,816,583	\$3,178,752
Sales Cont.	\$20 - \$50		\$27,522,265		\$26,834,347	\$687,918
Prize Exp. %	\$20 - \$50		75.1%		74.8%	0.3%
			FY 2012		FY 2011	Difference
Sales	Instant		\$657,960,897		\$637,435,036	\$20,525,861
Prize Exp.	Instant		\$450,054,450		\$436,305,608	\$13,748,842
Sales Cont.	Instant		\$207,906,447		\$201,129,428	\$6,777,019
Prize Exp. %	Instant		68.4%		68.4%	0.0%



Texas Lottery Commission  
**Weekly Sales Summary**  
**& Comparison to Previous Week**  
 Unaudited

	Week Ending 11/26/2011		Week Ending 11/19/2011			
	<u>THIS WEEK</u>	% of Sales	<u>LAST WEEK</u>	% of Sales	<u>\$ change</u>	<u>% change</u>
Total Sales	<u>\$70,819,593</u>		<u>\$72,858,064</u>		<u>-\$2,038,471</u>	-2.80%
Instant Tickets	<u>\$53,942,448</u>	76.2%	<u>\$54,978,079</u>	75.5%	<u>-\$1,035,631</u>	-1.88%
Lotto	\$3,499,908	4.9%	\$3,575,231	4.9%	-\$75,323	-2.11%
Pick 3	\$4,943,420	7.0%	\$5,216,095	7.2%	-\$272,675	-5.23%
Pick 3 Sum It Up	\$100,352	0.1%	\$106,956	0.1%	-\$6,604	-6.17%
Cash Five	\$1,179,174	1.7%	\$1,246,366	1.7%	-\$67,192	-5.39%
Texas Two Step	\$998,175	1.4%	\$1,059,355	1.5%	-\$61,180	-5.78%
Mega Millions	\$2,377,399	3.4%	\$2,300,050	3.2%	\$77,349	3.36%
Megaplier	\$555,760	0.8%	\$550,825	0.8%	\$4,935	0.90%
Daily 4	\$1,215,090	1.7%	\$1,224,365	1.7%	-\$9,275	-0.76%
Daily 4 Sum It Up	\$90,416	0.1%	\$89,978	0.1%	\$438	0.49%
Powerball	\$1,527,546	2.2%	\$2,033,222	2.8%	-\$505,676	-24.87%
Power Play	\$389,905	0.6%	\$477,542	0.7%	-\$87,637	-18.35%
Total Online Sales	<u>\$16,877,145</u>		<u>\$17,879,985</u>		<u>-\$1,002,840</u>	-5.61%

\* Totals may not sum due to rounding.

Texas Lottery Commission  
Weekly Sales Summary  
Unaudited

INSTANT TICKETS  
TOP TEN SELLING GAMES

For the Week Ending : 11/26/11

Rank	Price Point	Game	Sales (Millions)
1	\$ 20	MERRY MILLIONAIRE	3.181
2	\$ 10	SEASON'S GREETINGS	2.734
3	\$ 5	MEGA MONEY	2.713
4	\$ 5	SILVER BELLS	2.386
5	\$ 10	20X THE MONEY	2.381
6	\$ 20	\$500,000,000 FRENZY	2.356
7	\$ 3	MERRY CROSSWORD	2.066
8	\$ 5	\$100,000 EXTREME CASH	1.826
9	\$ 3	LOTERIA	1.682
10	\$ 5	CASH BLAST	1.597

Texas Lottery Commission  
Prize Payout Tracking Report  
Unaudited

Through Week Ending 11/26/11

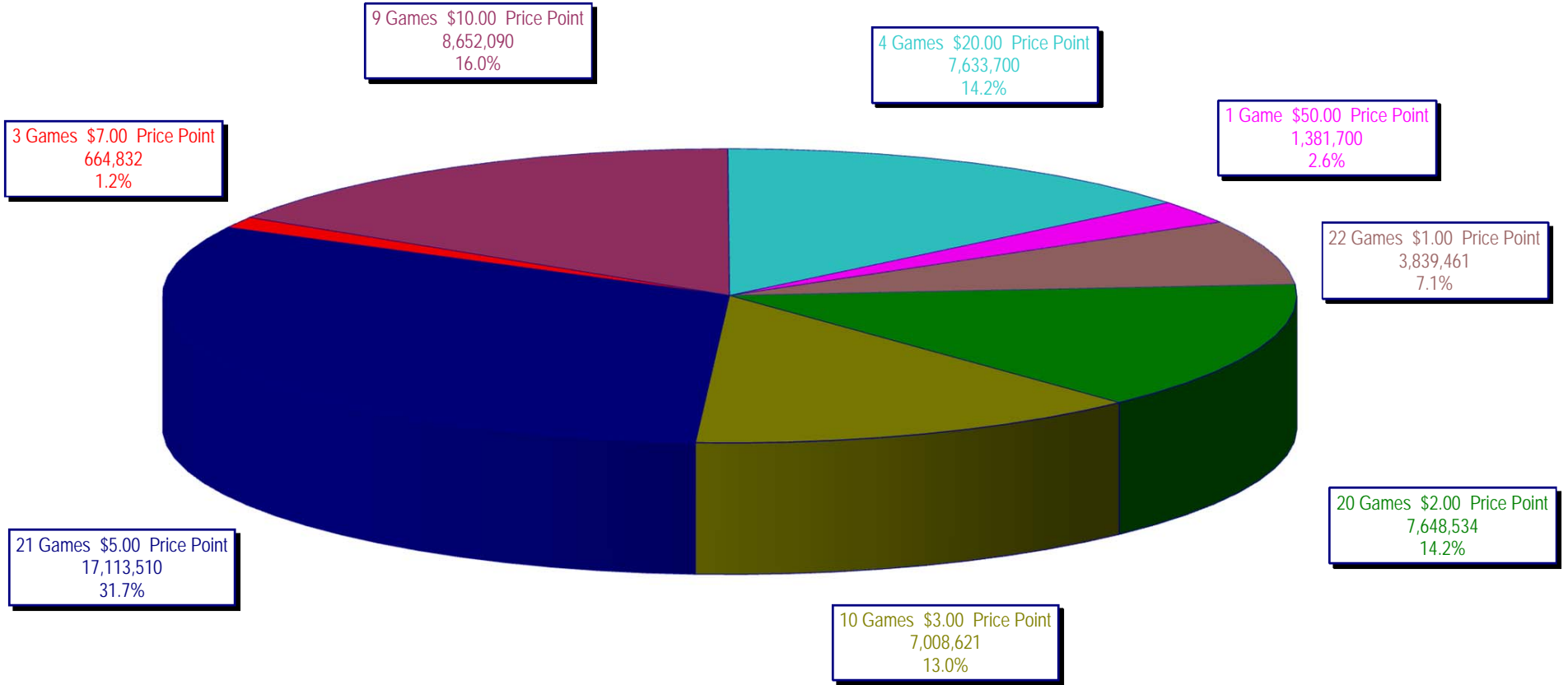
On-Line Sales

		FY Sales Through Week Ending 11/26/2011		FY Prize Expense Through Week Ending 11/26/2011	Actual* Prize Payout	Base Payout (Prize Pool)
Lotto	\$	41,937,189	\$	24,543,896	58.53%	50.00%
Pick 3		62,463,073		27,548,290	44.10%	50.00%
Pick 3 Sum It Up		1,267,493		561,673	44.31%	50.00%
Cash Five		15,233,008		7,616,643	50.00%	50.00%
Texas Two Step		15,037,730		7,554,610	50.24%	50.00%
Mega Millions		32,569,410		15,775,424	48.44%	50.00%**
Megaplier		7,457,648		4,277,958	57.36%	N/A
Daily 4		14,601,435		7,054,275	48.31%	50.00%
Daily 4 Sum It Up		1,097,247		438,566	39.97%	50.00%
Powerball		31,558,861		15,840,878	50.19%	50.00%**
Power Play		6,796,908		3,376,090	49.67%	N/A
<b>Totals</b>	\$	<b>230,020,002</b>	\$	<b>114,588,303</b>	<b>49.82%</b>	

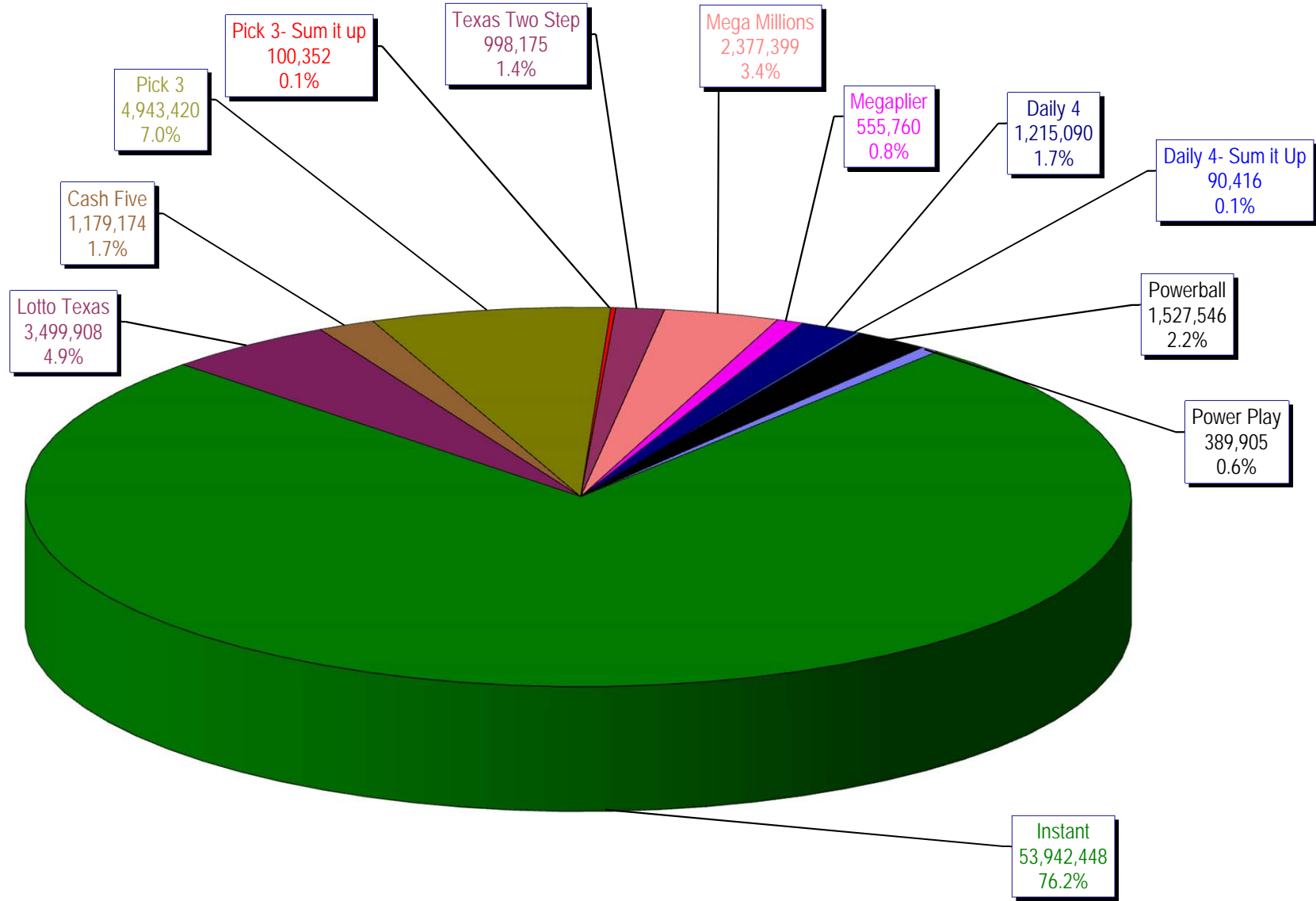
\* Before Unclaimed Prizes

\*\* Estimated; depends on # of guaranteed prizes won in Texas

Texas Lottery Commission  
Instant Ticket Sales  
For the Week Ending 11/26/11  
(Unaudited)



**Texas Lottery Commission  
All Game Sales  
For the Week Ending 11/26/11  
(Unaudited)**



Texas Lottery Commission - Weekly Sales Summary for FY 2012 (Unaudited)

Week Ended	Instant Games	New Games & Dates	Lotto Texas	Jackpot		Pick 3	Pick 3 Sum It Up	Cash Five	Texas Two Step	Jackpot		Mega Millions	Jackpot		Megaplier	Daily 4	Daily 4 Sum It Up	Powerball	Jackpot		Power Play	Total	Per Cap.
				W	S					M	TH		T	F					W	S			
9/3/2011	52,421,985	1340 (\$1,N); 1310 (\$2, N) - 08/29/11	3,710,974	23	24	5,228,940	100,997	1,239,134	989,988	225	300	2,248,664	21	29	539,246	1,221,178	93,318	2,401,555	75	91	530,686	70,726,664	2.81
9/10/2011	50,591,068	1360 (\$3, N) - 09/05/11	3,329,350	25	4	5,103,026	99,259	1,198,563	935,771	450	200	2,387,766	37	44	557,225	1,180,505	88,443	2,295,315	107	20	506,631	68,272,921	2.71
9/17/2011	49,835,063	0	3,031,798	5	6	4,953,079	100,990	1,210,562	961,592	225	300	2,801,526	54	65	626,459	1,125,230	83,532	1,560,522	25	20	387,037	66,677,389	2.64
9/24/2011	49,777,138	1362(\$1,N); 1363(5,N); 1364(\$5,N) - 09/19/11	3,083,973	7	8	4,819,453	97,999	1,200,444	1,283,472	450	600	3,206,022	75	86	692,909	1,092,294	82,198	1,561,655	25	30	384,383	67,281,938	2.67
10/1/2011	51,040,274	1365(\$2,N) - 09/26/11	3,196,730	9	10	4,846,896	97,026	1,215,715	1,146,613	800	200	4,033,330	96	113	830,660	1,096,271	83,993	1,693,809	37	47	412,058	69,693,374	2.76
10/8/2011	53,715,157	1366(\$1,N) - 10/03/11	3,231,892	11	12	5,064,771	102,919	1,252,733	1,004,251	225	300	2,176,684	12	14	527,777	1,188,636	92,825	2,103,034	58	71	480,159	70,940,837	2.81
10/15/2011	51,942,121	1367 (\$7, N) - 10/10/11	3,230,925	13	14	4,776,985	99,008	1,214,385	1,337,436	450	625	2,260,036	22	30	542,787	1,132,415	84,772	2,613,215	86	105	563,017	69,797,101	2.77
10/22/2011	52,837,769	1369 (\$1, N); 1370 (\$5, N) - 10/17/11	3,250,317	15	16	4,784,201	98,306	1,202,768	1,887,302	825	1,050	2,386,255	39	48	561,705	1,130,353	83,722	3,477,867	124	148	695,724	72,396,288	2.87
10/29/2011	52,206,644	1371 (\$2, N) - 10/24/11	3,302,201	17	18	4,685,786	95,887	1,186,987	2,055,399	1,300	1,550	2,592,752	57	67	596,631	1,107,441	82,921	4,895,300	173	203	903,261	73,711,209	2.92
11/5/2011	56,265,310	1373 (\$10, N) - 10/31/11	3,570,825	19	20	5,165,835	105,793	1,240,514	910,036	200	200	2,497,308	78	12	583,481	1,222,706	92,619	4,617,172	245	20	863,799	77,135,396	3.06
11/12/2011	55,682,645	1375 (\$3, N); 1374 (\$1, N) - 11/07/11	3,673,137	21	22	5,298,645	109,575	1,268,630	961,349	225	200	2,362,698	15	22	552,133	1,235,272	92,025	1,861,697	25	35	447,243	73,545,049	2.92
11/19/2011	54,978,079	1376(\$2, N); 1377 (\$5, N) - 11/14/11	3,575,231	23	24	5,216,095	106,956	1,246,366	1,059,355	225	325	2,300,050	30	40	550,825	1,224,365	89,978	2,033,222	46	60	477,542	72,858,064	2.89
11/26/2011	53,942,448	1372 (\$5, N) - 11/21/11	3,499,908	25	26	4,943,420	100,352	1,179,174	998,175	500	200	2,377,399	47	55	555,760	1,215,090	90,416	1,527,546	20	25	389,905	70,819,593	2.81
weekly change	-1.9%		-2.1%			-5.2%	-6.2%	-5.4%	-5.8%			3.4%			0.9%	-0.8%	0.5%	-24.9%			-18.4%	-2.8%	
	<b>SALES</b>		<b>SALES</b>			<b>SALES</b>	<b>SALES</b>	<b>SALES</b>	<b>SALES</b>			<b>SALES</b>			<b>SALES</b>	<b>SALES</b>	<b>SALES</b>	<b>SALES</b>			<b>SALES</b>	<b>SALES</b>	<b>% of Sales</b>
Startup to date	42,533,319,099		10,949,943,248			4,189,823,394	24,570,826	2,336,141,669	592,872,197			1,518,001,135			347,592,819	215,604,123	24,066,687	187,950,745			43,060,253	63,171,080,166	100.0%
Calendar Year to date	2,578,422,432		158,496,722			246,191,709	123,957	58,566,347	49,639,481			152,778,247			32,939,049	54,456,782	4,050,881	105,009,253			23,243,983	3,463,918,842	100.0%
Fiscal Year to date 2012	657,960,897		41,937,189			62,463,073	1,267,493	15,233,008	15,037,730			32,569,410			7,457,648	14,601,435	1,097,247	31,558,861			6,796,908	887,980,899	100.0%