



*WEEKLY SALES SUMMARY*

Unaudited

[Week Ending: 11/26/2016](#)

Texas Lottery Commission  
Fiscal Year to Date Sales Comparison  
Unaudited

Through the Week Ending 11/26/2016 (13 Weeks)

Sales by Game	FY 2015 *	FY 2016 **	FY 2017	\$ Change		% Change	
				FY 2017 to FY 2015	FY 2017 to FY 2016	FY 2017 to FY 2015	FY 2017 to FY 2016
Scratch Tickets	\$ 800,467,023	\$ 827,689,791	\$ 865,650,402	\$ 65,183,379	\$ 37,960,611	8.1%	4.6%
Lotto Texas	29,520,295	31,260,932	26,512,046	-3,008,249	-4,748,886	-10.2%	-15.2%
Lotto Extra	4,452,198	5,265,455	5,063,081	610,883	-202,374	13.7%	-3.8%
Pick 3	61,037,356	61,220,345	58,045,841	-2,991,515	-3,174,504	-4.9%	-5.2%
Pick 3 Sum It Up	1,173,290	1,233,001	1,110,154	-63,136	-122,848	-5.4%	-10.0%
Cash Five	12,238,738	11,394,487	10,416,217	-1,822,521	-978,270	-14.9%	-8.6%
Texas Two Step	14,091,384	13,070,338	12,100,243	-1,991,141	-970,095	-14.1%	-7.4%
Mega Millions	39,970,013	31,406,881	24,770,271	-15,199,742	-6,636,610	-38.0%	-21.1%
Megaplier	9,026,527	7,813,404	6,825,095	-2,201,432	-988,309	-24.4%	-12.6%
Daily 4	20,450,063	20,920,441	21,490,853	1,040,791	570,413	5.1%	2.7%
Daily 4 Sum It Up	1,231,357	1,080,407	1,125,938	-105,419	45,531	-8.6%	4.2%
Powerball	43,994,363	49,291,952	58,396,505	14,402,142	9,104,553	32.7%	18.5%
Power Play	5,709,988	6,438,099	8,074,946	2,364,958	1,636,847	41.4%	25.4%
All or Nothing	9,747,402	7,723,966	6,928,716	-2,818,686	-795,250	-28.9%	-10.3%
Monopoly	2,134,780	-	-	-2,134,780	-	-100.0%	-
Texas Triple Chance	-	6,464,607	3,849,752	3,849,752	-2,614,855	-	-40.4%
<b>Total</b>	<b>\$ 1,055,244,775</b>	<b>\$ 1,082,274,105</b>	<b>\$ 1,110,360,059</b>	<b>\$ 55,115,284</b>	<b>\$ 28,085,954</b>	<b>5.2%</b>	<b>2.6%</b>

\* 3 extra days

\*\* 2 extra days

Texas Lottery Commission  
Fiscal Year to Date Cumulative Average Sales Comparison  
Unaudited

Through the Week Ending 11/26/2016 (13 Weeks)

Sales by Game	FY 2015	FY 2016	FY 2017
Scratch Tickets	\$ 8,894,078	\$ 9,299,885	\$ 9,950,005
Lotto Texas	328,003	351,246	304,736
Lotto Extra	49,469	59,162	58,196
Pick 3	678,193	687,869	667,194
Pick 3 Sum It Up	13,037	13,854	12,760
Cash Five	135,986	128,028	119,727
Texas Two Step	156,571	146,858	139,083
Mega Millions	444,111	352,886	284,716
Megaplier	100,295	87,791	78,449
Daily 4	227,223	235,061	247,021
Daily 4 Sum It Up	13,682	12,139	12,942
Powerball	488,826	553,842	671,224
Power Play	63,444	72,338	92,815
All or Nothing	108,304	86,786	79,640
Monopoly	** 50,828	-	-
Texas Triple Chance	- *	102,613	44,250
<b>Total</b>	<b>\$ 11,752,050</b>	<b>\$ 12,190,360</b>	<b>\$ 12,762,759</b>

thru 11/29/2014

thru 11/28/2015

thru 11/26/2016

90 days

89 days

87 days

\*\* 42 days

\* 63 days

Texas Lottery Commission  
Fiscal Year Over Year Change in Sales  
Unaudited  
FY 2017 Compared to FY 2016

			SCRATCH TICKETS				DRAW GAMES				TOTAL SALES			
FY 2017			FY 2017	FY 2016	Difference	% change - Cumulative Sales	FY 2017	FY 2016	Difference	% change - Cumulative Sales	FY 2017	FY 2016	Difference	% change - Cumulative Sales
Week	Week Ending													
1	9/3/2016 *		\$32,980,266	\$49,534,249	(\$16,553,983)	-33.4%	\$10,218,656	\$17,091,724	(\$6,873,068)	-40.2%	\$43,198,922	\$66,625,973	(\$23,427,051)	-35.2%
2	9/10/2016		\$65,952,418	\$61,566,291	\$4,386,127	7.1%	\$19,635,377	\$20,630,922	(\$995,545)	-4.8%	\$85,587,795	\$82,197,213	\$3,390,583	4.1%
3	9/17/2016		\$66,196,270	\$63,530,657	\$2,665,613	4.2%	\$20,915,290	\$20,327,253	\$588,037	2.9%	\$87,111,560	\$83,857,910	\$3,253,650	3.9%
4	9/24/2016		\$64,383,005	\$61,731,400	\$2,651,605	4.3%	\$17,451,165	\$22,252,290	(\$4,801,125)	-21.6%	\$81,834,170	\$83,983,690	(\$2,149,520)	-2.6%
5	10/1/2016		\$67,349,951	\$67,048,415	\$301,536	0.4%	\$17,519,852	\$25,436,791	(\$7,916,939)	-31.1%	\$84,869,803	\$92,485,206	(\$7,615,403)	-8.2%
6	10/8/2016		\$71,598,690	\$66,049,706	\$5,548,984	8.4%	\$18,211,107	\$18,138,977	\$72,130	0.4%	\$89,809,797	\$84,188,683	\$5,621,114	6.7%
7	10/15/2016		\$69,444,762	\$65,073,593	\$4,371,169	6.7%	\$18,075,261	\$17,776,414	\$298,847	1.7%	\$87,520,023	\$82,850,007	\$4,670,016	5.6%
8	10/22/2016		\$69,317,066	\$64,087,437	\$5,229,629	8.2%	\$18,422,336	\$18,450,464	(\$28,128)	-0.2%	\$87,739,402	\$82,537,901	\$5,201,501	6.3%
9	10/29/2016		\$69,729,599	\$66,025,374	\$3,704,225	5.6%	\$18,535,248	\$19,568,150	(\$1,032,902)	-5.3%	\$88,264,847	\$85,593,524	\$2,671,324	3.1%
10	11/5/2016		\$73,451,702	\$68,137,192	\$5,314,510	7.8%	\$20,151,939	\$20,398,351	(\$246,413)	-1.2%	\$93,603,641	\$88,535,543	\$5,068,098	5.7%
11	11/12/2016		\$70,998,320	\$65,449,428	\$5,548,892	8.5%	\$19,925,460	\$20,169,382	(\$243,923)	-1.2%	\$90,923,780	\$85,618,810	\$5,304,970	6.2%
12	11/19/2016		\$75,265,196	\$68,364,421	\$6,900,775	10.1%	\$21,424,637	\$17,174,606	\$4,250,031	24.7%	\$96,689,833	\$85,539,027	\$11,150,806	13.0%
13	11/26/2016		\$68,983,157	\$61,091,628	\$7,891,529	12.9%	\$24,223,331	\$17,168,993	\$7,054,338	41.1%	\$93,206,488	\$78,260,621	\$14,945,867	19.1%
14	12/3/2016			\$67,830,827				\$19,252,418				\$87,083,245		
15	12/10/2016			\$68,324,452				\$19,529,408				\$87,853,860		
16	12/17/2016			\$71,041,258				\$20,824,840				\$91,866,098		
17	12/24/2016			\$78,125,965				\$22,586,417				\$100,712,382		
18	12/31/2016			\$76,712,975				\$27,972,880				\$104,685,855		
19	1/7/2017			\$77,136,541				\$127,289,478				\$204,426,019		
20	1/14/2017			\$73,858,865				\$140,104,126				\$213,962,991		
21	1/21/2017			\$70,665,700				\$20,781,745				\$91,447,445		
22	1/28/2017			\$71,051,685				\$20,433,401				\$91,485,086		
23	2/4/2017			\$78,458,428				\$21,274,800				\$99,733,228		
24	2/11/2017			\$80,754,850				\$21,391,919				\$102,146,769		
25	2/18/2017			\$80,078,271				\$21,911,382				\$101,989,653		
26	2/25/2017			\$78,832,217				\$22,823,086				\$101,655,303		
27	3/4/2017			\$80,019,524				\$23,146,906				\$103,166,430		
28	3/11/2017			\$78,524,214				\$19,311,625				\$97,835,839		
29	3/18/2017			\$75,446,960				\$18,001,000				\$93,447,960		
30	3/25/2017			\$75,293,759				\$18,553,964				\$93,847,723		
31	4/1/2017			\$79,316,221				\$19,482,563				\$98,798,784		
32	4/8/2017			\$74,560,898				\$20,100,629				\$94,661,527		
33	4/15/2017			\$74,056,586				\$20,677,413				\$94,733,999		
34	4/22/2017			\$73,110,080				\$20,313,339				\$93,423,419		
35	4/29/2017			\$73,448,019				\$22,666,626				\$96,114,645		
36	5/6/2017			\$77,593,399				\$33,262,968				\$110,856,367		
37	5/13/2017			\$75,263,676				\$20,250,149				\$95,513,825		
38	5/20/2017			\$74,274,808				\$19,605,983				\$93,880,791		
39	5/27/2017			\$71,562,728				\$20,150,232				\$91,712,960		
40	6/3/2017			\$73,085,109				\$21,067,550				\$94,152,659		
41	6/10/2017			\$70,593,768				\$21,389,794				\$91,983,562		
42	6/17/2017			\$69,501,864				\$22,402,713				\$91,904,577		

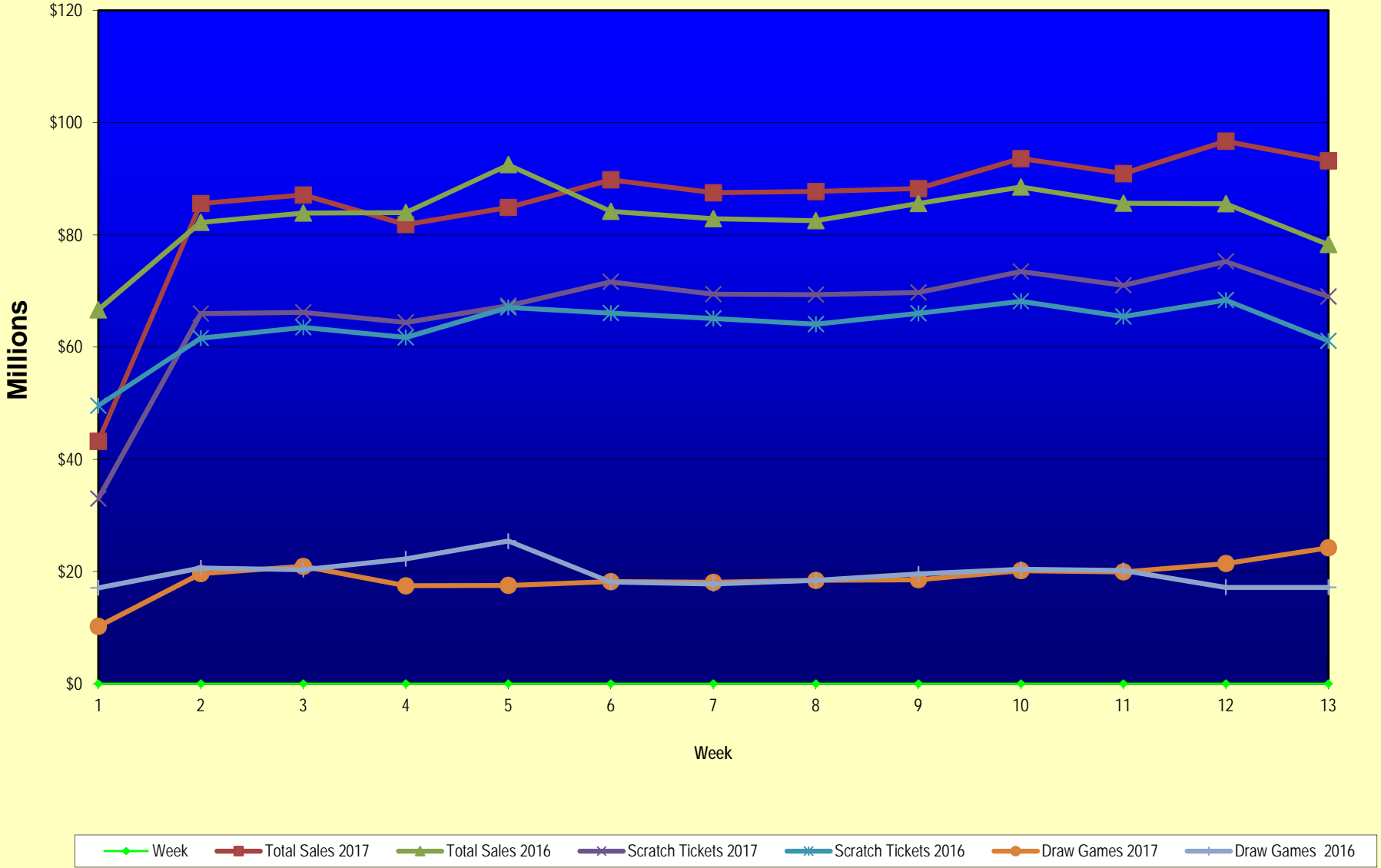
Texas Lottery Commission  
Fiscal Year Over Year Change in Sales  
Unaudited  
FY 2017 Compared to FY 2016

			SCRATCH TICKETS				DRAW GAMES				TOTAL SALES			
FY 2017			FY 2017	FY 2016	Difference	% change - Cumulative Sales	FY 2017	FY 2016	Difference	% change - Cumulative Sales	FY 2017	FY 2016	Difference	% change - Cumulative Sales
Week	Week Ending													
43	6/24/2017			\$69,243,660				\$24,290,311				\$93,533,971		
44	7/1/2017			\$70,782,313				\$29,331,406				\$100,113,719		
45	7/8/2017			\$67,636,625				\$38,673,314				\$106,309,939		
46	7/15/2017			\$68,064,720				\$21,311,938				\$89,376,658		
47	7/22/2017			\$69,509,821				\$21,982,689				\$91,492,510		
48	7/29/2017			\$64,486,970				\$30,699,953				\$95,186,923		
49	8/5/2017			\$69,206,183				\$18,277,075				\$87,483,258		
50	8/12/2017			\$67,165,060				\$18,101,640				\$85,266,700		
51	8/19/2017			\$69,067,938				\$18,981,681				\$88,049,619		
52	8/26/2017			\$67,821,162				\$19,606,571				\$87,427,733		
	8/31/2017 **			\$36,609,542				\$9,310,254				\$45,919,796		
Total thru Current Week			\$865,650,402	\$827,689,791	\$37,960,611	4.6%	\$244,709,657	\$254,584,314	(\$9,874,657)	-3.9%	\$1,110,360,059	\$1,082,274,105	\$28,085,954	2.6%
Fiscal Year Total			\$865,650,402	\$3,715,807,432			\$244,709,657	\$1,351,710,491			\$1,110,360,059	\$5,067,517,923		

\* FY 17 includes 3 days; FY 16 includes 5 days

\*\* FY 17 includes 5 days; FY 16 includes 4 days

### Texas Lottery Commission Fiscal Year Over Year Change in Sales



Note: Week 1 is not a full week of sales as this report is prepared on a Fiscal Year basis.

Texas Lottery Commission  
Scratch Tickets by Price Point  
Sales, Prize Expense, Sales Contribution and Payout Percentage With Year Over Year Changes  
Unaudited

Fiscal Year	Price Point	# of Active Games	FY Sales	% of Scratch Ticket Sales	Year over Year Change in Sales	FY Prize Expense	Year over Year Change in Prize Expense	FY Sales Contribution	Year over Year Change in Contribution	Average Prize Payout %	Year over Year Change in Payout %
2016	\$1.00	13	36,754,981	4.4%		22,255,680		14,499,301		60.6%	0.1%
Through	\$2.00	25	81,386,690	9.8%		52,950,705		28,435,985		65.1%	-0.7%
11/28/2015	\$3.00	9	72,377,250	8.7%		47,623,511		24,753,739		65.8%	-0.2%
	\$5.00	39	264,548,340	32.0%		179,727,296		84,821,044		67.9%	0.0%
	\$10.00	14	166,059,760	20.1%		116,353,712		49,706,048		70.1%	-0.3%
	\$20.00	9	165,650,820	20.0%		124,141,878		41,508,942		74.9%	0.0%
	\$50.00	3	40,911,950	4.9%		31,818,551		9,093,399		77.8%	0.0%
<b>Total</b>		<b>112</b>	<b>\$827,689,791</b>			<b>\$574,871,333</b>		<b>\$252,818,458</b>		<b>69.5%</b>	<b>0.0%</b>
2017	\$1.00	17	34,354,367	4.0%		20,818,775		13,535,592		60.6%	0.6%
Through	\$2.00	22	73,464,034	8.5%		47,894,842		25,569,192		65.2%	0.0%
11/26/2016	\$3.00	8	59,717,016	6.9%		39,366,920		20,350,096		65.9%	0.0%
	\$5.00	39	274,307,565	31.7%		186,364,353		87,943,212		67.9%	0.0%
	\$10.00	15	175,015,070	20.2%		123,645,950		51,369,120		70.6%	0.7%
	\$20.00	10	206,120,700	23.8%		154,447,349		51,673,351		74.9%	0.0%
	\$50.00	4	42,671,650	4.9%		33,205,179		9,466,471		77.8%	0.0%
<b>Total</b>		<b>115</b>	<b>\$865,650,402</b>			<b>\$605,743,369</b>		<b>\$259,907,033</b>		<b>70.0%</b>	<b>0.6%</b>
Variance	\$1.00	4	-2,400,614		-6.5%	-1,436,905	-6.5%	-963,709	-6.6%	0.05%	
2017 to	\$2.00	-3	-7,922,656		-9.7%	-5,055,863	-9.5%	-2,866,793	-10.1%	0.13%	
2016	\$3.00	-1	-12,660,234		-17.5%	-8,256,591	-17.3%	-4,403,643	-17.8%	0.12%	
	\$5.00	0	9,759,225		3.7%	6,637,058	3.7%	3,122,167	3.7%	0.00%	
	\$10.00	1	8,955,310		5.4%	7,292,238	6.3%	1,663,072	3.3%	0.58%	
	\$20.00	1	40,469,880		24.4%	30,305,471	24.4%	10,164,409	24.5%	-0.01%	
	\$50.00	1	1,759,700		4.3%	1,386,628	4.4%	373,072	4.1%	0.04%	
<b>Total</b>		<b>3</b>	<b>\$37,960,611</b>		<b>4.6%</b>	<b>\$30,872,036</b>	<b>5.4%</b>	<b>\$7,088,575</b>	<b>2.8%</b>	<b>0.52%</b>	

Notes - Scratch Ticket Variances

Texas Lottery Commission  
Scratch Tickets by Price Point  
Sales, Prize Expense, Sales Contribution and Payout Percentage With Year Over Year Changes  
Unaudited

		FY 2017		FY 2016		Difference
Sales	\$1 - \$5	\$441,842,982		\$455,067,261		-\$13,224,279
Prize Exp.	\$1 - \$5	\$294,444,890		\$302,557,192		-\$8,112,302
Sales Cont.	\$1 - \$5	\$147,398,092		\$152,510,069		-\$5,111,977
Prize Exp. %	\$1 - \$5	66.6%		66.5%		0.2%
		FY 2017		FY 2016		Difference
Sales	\$10 - \$50	\$423,807,420		\$372,622,530		\$51,184,890
Prize Exp.	\$10 - \$50	\$311,298,478		\$272,314,140		\$38,984,338
Sales Cont.	\$10 - \$50	\$112,508,942		\$100,308,390		\$12,200,552
Prize Exp. %	\$10 - \$50	73.5%		73.1%		0.4%
		FY 2017		FY 2016		Difference
Sales	Scratch	\$865,650,402		\$827,689,791		\$37,960,611
Prize Exp.	Scratch	\$605,743,369		\$574,871,333		\$30,872,036
Sales Cont.	Scratch	\$259,907,033		\$252,818,458		\$7,088,575
Prize Exp. %	Scratch	70.0%		69.5%		0.5%

		FY 2017		FY 2016		Difference
Sales	\$1 - \$10	\$616,858,052		\$621,127,021		-\$4,268,969
Prize Exp.	\$1 - \$10	\$418,090,841		\$418,910,904		-\$820,064
Sales Cont.	\$1 - \$10	\$198,767,211		\$202,216,117		-\$3,448,905
Prize Exp. %	\$1 - \$10	67.8%		67.4%		0.3%
		FY 2017		FY 2016		Difference
Sales	\$20 - \$50	\$248,792,350		\$206,562,770		\$42,229,580
Prize Exp.	\$20 - \$50	\$187,652,528		\$155,960,428		\$31,692,099
Sales Cont.	\$20 - \$50	\$61,139,822		\$50,602,342		\$10,537,481
Prize Exp. %	\$20 - \$50	75.4%		75.5%		-0.1%
		FY 2017		FY 2016		Difference
Sales	Scratch	\$865,650,402		\$827,689,791		\$37,960,611
Prize Exp.	Scratch	\$605,743,369		\$574,871,333		\$30,872,036
Sales Cont.	Scratch	\$259,907,033		\$252,818,458		\$7,088,575
Prize Exp. %	Scratch	70.0%		69.5%		0.5%



Texas Lottery Commission  
**Weekly Sales Summary**  
**& Comparison to Previous Week**  
 Unaudited

	Week Ending 11/26/2016	% of Sales	Week Ending 11/19/2016	% of Sales	\$ change	% change
	<u>THIS WEEK</u>		<u>LAST WEEK</u>			
Total Sales	<u>\$93,206,488</u>		<u>\$96,689,833</u>		<u>-\$3,483,345</u>	-3.60%
Scratch Tickets	<u>\$68,983,157</u>	74.0%	<u>\$75,265,196</u>	77.8%	<u>-\$6,282,039</u>	-8.35%
Lotto	\$1,945,264	2.1%	\$1,924,291	2.0%	\$20,973	1.09%
Lotto Extra	\$383,703	0.4%	\$376,977	0.4%	\$6,726	1.78%
Pick 3	\$4,472,018	4.8%	\$4,595,331	4.8%	-\$123,313	-2.68%
Pick 3 Sum It Up	\$83,761	0.1%	\$87,939	0.1%	-\$4,178	-4.75%
Cash Five	\$795,696	0.9%	\$830,211	0.9%	-\$34,515	-4.16%
Texas Two Step	\$737,931	0.8%	\$1,078,765	1.1%	-\$340,834	-31.59%
Mega Millions	\$1,698,370	1.8%	\$2,072,033	2.1%	-\$373,663	-18.03%
Megaplier	\$487,160	0.5%	\$567,597	0.6%	-\$80,437	-14.17%
Daily 4	\$1,649,794	1.8%	\$1,715,227	1.8%	-\$65,433	-3.81%
Daily 4 Sum It Up	\$84,195	0.1%	\$91,335	0.1%	-\$7,140	-7.82%
Powerball	\$9,839,524	10.6%	\$6,391,094	6.6%	\$3,448,430	53.96%
Power Play	\$1,235,062	1.3%	\$836,372	0.9%	\$398,690	47.67%
All or Nothing	\$527,328	0.6%	\$557,058	0.6%	-\$29,730	-5.34%
Texas Triple Chance	\$283,526	0.3%	\$300,408	0.3%	-\$16,882	-5.62%
Total Draw Game Sales	<u>\$24,223,331</u>		<u>\$21,424,637</u>		<u>\$2,798,695</u>	13.06%

\* Totals may not sum due to rounding.

Texas Lottery Commission  
Weekly Sales Summary  
Unaudited

SCRATCH TICKETS  
TOP TEN SELLING GAMES

For the week ending: 11/26/2016

Rank	Price Point	Game	Sales (Millions)
1	\$ 10	HOLIDAY COUNTDOWN SUPER TICKET	\$ 4.186
2	\$ 10	\$1 MILLION HIGH ROLLER	\$ 4.065
3	\$ 20	SUPER BREAK THE BANK	\$ 3.206
4	\$ 5	SUPER LOTERIA	\$ 3.178
5	\$ 20	100X THE CASH	\$ 3.128
6	\$ 50	\$7,500,000 ULTIMATE CASH	\$ 2.613
7	\$ 10	\$200 MILLION PAYOUT	\$ 2.455
8	\$ 10	CASHWORD MULTIPLIER	\$ 2.395
9	\$ 5	GOLDEN TICKET	\$ 2.256
10	\$ 5	WILD CASH BONANZA	\$ 2.232

Texas Lottery Commission  
Prize Payout Tracking Report  
Unaudited

Through the week ending: 11/26/2016

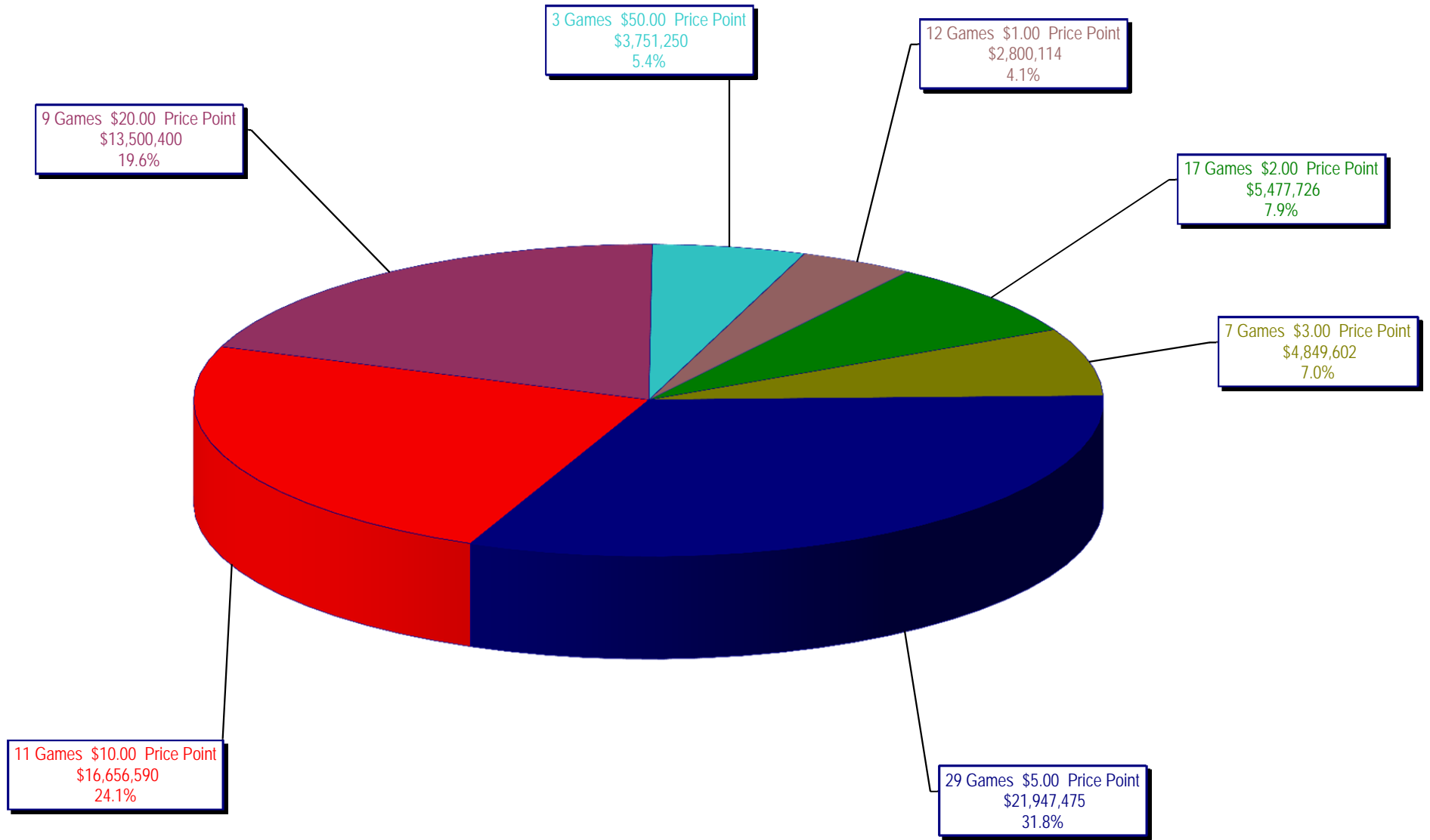
Draw Game Sales

		FY Sales Through Week Ending 11/26/2016		FY Prize Expense Through Week Ending 11/26/2016	Actual* Prize Payout	Base Payout (Prize Pool)
Lotto	\$	26,512,046	\$	13,257,262	50.00%	50.00%
Lotto Extra		5,063,081		2,771,408	54.74%	53.70%
Pick 3		58,045,841		28,016,330	48.27%	50.00%
Pick 3 Sum It Up		1,110,154		531,615	47.89%	50.00%
Cash Five		10,416,217		5,208,171	50.00%	50.00%
Texas Two Step		12,100,243		6,370,812	52.65%	50.00%
Mega Millions		24,770,271		12,665,277	51.13%	50.00%**
Megaplier		6,825,095		3,419,143	50.10%	N/A
Daily 4		21,490,853		9,092,150	42.31%	50.00%
Daily 4 Sum It Up		1,125,938		497,807	44.21%	50.00%
Powerball		58,396,505		29,195,521	50.00%	50.00%**
Power Play		8,074,946		4,038,797	50.02%	N/A
All or Nothing		6,928,716		3,800,388	54.85%	55.98%
Texas Triple Chance		3,849,752		1,952,591	50.72%	54.42%
<b>Totals</b>	\$	<b>244,709,657</b>	\$	<b>120,817,272</b>	<b>49.37%</b>	

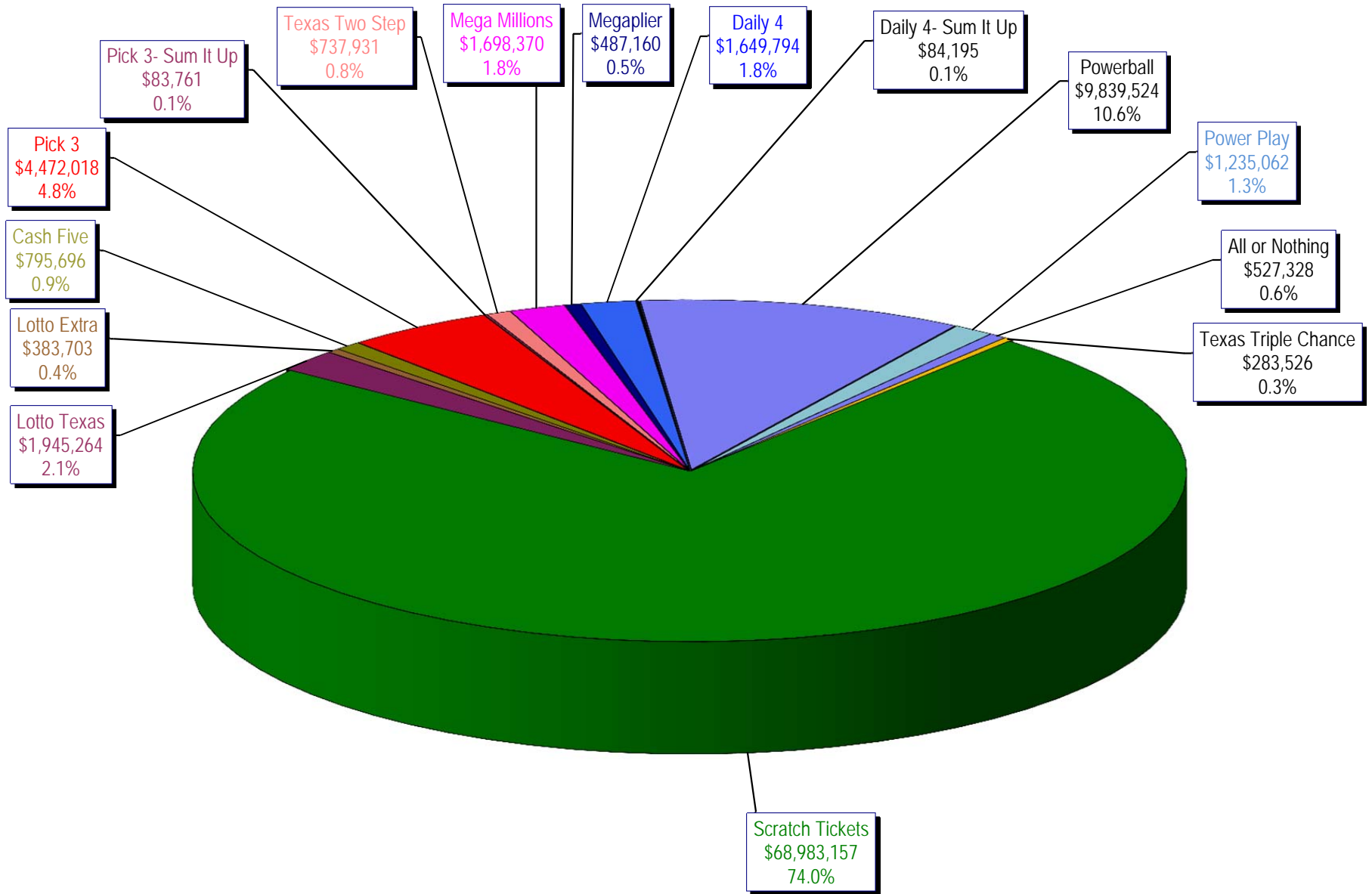
\* Before Unclaimed Prizes

\*\*Estimated; depends on # of guaranteed prizes won in Texas

Texas Lottery Commission  
Scratch Ticket Sales  
For the week ending 11/26/2016  
(Unaudited)



**Texas Lottery Commission**  
**All Game Sales**  
For the week ending 11/26/2016  
(Unaudited)



Texas Lottery Commission - Weekly Sales Summary for FY 2017 (Unaudited)

Week Ended	Scratch Tickets	New Games & Dates	Lotto Texas	Jackpot		Lotto Extra	Pick 3	Pick 3 Sum It Up	Cash Five	Texas Two Step	Jackpot		Mega Millions	Jackpot		Megaplier	Daily 4	Daily 4 Sum It Up	Powerball	Jackpot		Power Play	All or Nothing	Texas Triple Chance	Total	Per Cap.	
				W	S						M	TH		T	F					W	S						
9/3/2016*	69,589,808	0	2,106,552	8.75	9.25	402,665	4,798,985	92,214	843,135	810,947	200	200	2,331,141	84	92	631,299	1,788,614	96,398	4,189,234	154	170	603,430	528,102	306,194	89,118,717	3.24	
9/10/2016	65,952,418	1810 (\$1.N); 1809 (\$1.N); 1811 (\$5.N) - 9/06/16	2,095,828	9.75	10.25	399,944	4,590,651	86,697	818,614	862,148	225	275	2,490,552	101	111	655,066	1,647,119	87,455	4,473,836	186	205	628,810	506,718	291,940	85,587,795	3.12	
9/17/2016	66,196,270	0	2,127,440	11	11.75	405,936	4,553,039	86,110	822,240	1,180,444	400	550	2,661,252	122	133	692,583	1,705,629	91,610	5,096,928	222	244	696,626	503,466	291,988	87,111,560	3.17	
9/24/2016	64,383,005	1793 (\$2.N); 1782 (\$5.N); 1781 (\$10.N) - 9/19/16	2,141,721	12.25	13	404,127	4,551,066	83,958	811,604	1,465,789	700	900	1,733,288	15	20	489,347	1,680,793	90,386	2,790,676	40	50	429,512	503,041	275,858	81,834,170	2.98	
10/1/2016	67,349,951	0	2,203,652	13.25	14	414,603	4,642,047	91,016	857,979	816,836	200	225	1,840,801	25	30	515,384	1,688,464	88,184	2,960,772	60	70	455,619	589,964	354,532	84,869,803	3.09	
10/8/2016	71,598,690	1772 (\$1.N); 1770 (\$2.N); 1813 (\$5.N); 1779 (\$20.N) - 10/03/16	2,211,941	14.5	15.5	419,062	4,900,537	94,965	867,520	849,234	200	225	1,925,289	35	41	540,723	1,780,544	92,908	3,109,092	80	91	471,027	611,898	336,368	89,809,797	3.27	
10/15/2016	69,444,762	0	2,207,002	16	16.75	416,802	4,549,017	89,171	836,548	1,024,493	300	425	1,780,458	49	15	496,567	1,679,519	87,007	3,499,528	107	122	510,617	577,343	321,190	87,520,023	3.19	
10/22/2016	69,317,066	1814 (\$3.N); 1815 (\$5.N); 1832 (\$50.N) - 10/17/16	2,222,089	17	18	420,632	4,457,898	84,115	836,942	1,260,293	575	750	1,714,985	20	25	482,408	1,636,471	83,009	3,800,444	136	151	542,655	564,808	315,588	87,739,402	3.19	
10/29/2016	69,729,599	0	2,269,908	18.5	19.25	430,487	4,511,234	86,114	833,125	779,029	200	200	1,781,093	30	35	500,203	1,711,520	88,083	4,097,116	164	180	575,614	565,102	306,622	88,264,847	3.21	
11/5/2016	73,451,702	0	2,168,782	20	5	414,167	4,996,360	97,149	859,798	796,978	200	200	1,904,765	40	47	534,014	1,913,301	100,223	4,796,408	198	217	660,205	591,246	318,544	93,603,641	3.41	
11/12/2016	70,998,320	1816 (\$2.N); 1808 (\$5.N); 1817 (\$5.N); 1818 (\$10.N) - 11/07/16	1,893,513	5.25	5.5	368,470	4,642,196	89,581	833,195	869,408	225	275	1,964,313	54	65	541,639	1,741,306	90,176	5,313,351	236	258	715,597	563,280	299,436	90,923,780	3.31	
11/19/2016	75,265,196	1819 (\$1.N); 1820 (\$5.N); 1869 (\$10.N) - 11/16/16	1,924,291	5.75	6	376,977	4,595,331	87,939	830,211	1,078,765	400	550	2,072,033	73	82	567,597	1,715,227	91,335	6,391,094	293	320	836,372	557,058	300,408	96,689,833	3.52	
11/26/2016	68,983,157	0	1,945,264	6.25	6.5	383,703	4,472,018	83,761	795,696	737,931	200	225	1,698,370	15	20	487,160	1,649,794	84,195	9,839,524	359	403	1,235,062	527,328	283,526	93,206,488	3.39	
weekly change	-8.3%		1.1%			1.8%	-2.7%	-4.8%	-4.2%	-31.6%			-18.0%			-14.2%	-3.8%	-7.8%	54.0%		47.7%		-5.3%	-5.6%		-3.6%	
	<b>SALES</b>		<b>SALES</b>			<b>SALES</b>	<b>SALES</b>	<b>SALES</b>	<b>SALES</b>	<b>SALES</b>			<b>SALES</b>			<b>SALES</b>	<b>SALES</b>	<b>SALES</b>			<b>SALES</b>	<b>SALES</b>	<b>SALES</b>	<b>SALES</b>	<b>SALES</b>	<b>% of Sales</b>	
Calendar Year to date	3,413,898,046		104,787,876			19,509,291	228,668,589	4,633,334	40,893,195	49,065,758			138,543,501			35,525,591	82,604,967	4,457,622	437,908,644			51,347,538	26,858,972	17,834,005	4,656,536,828	100.0%	
Fiscal Year to date 2017	865,650,402		26,512,046			5,063,081	58,045,841	1,110,154	10,416,217	12,100,243			24,770,271			6,825,095	21,490,853	1,125,938	58,396,505			8,074,946	6,928,716	3,849,752	1,110,360,059	100.0%	
*Full week includes 4 days from FY16																											