



WEEKLY SALES SUMMARY

Unaudited

[Week Ending: 11/28/2015](#)

Texas Lottery Commission
Fiscal Year to Date Sales Comparison
Unaudited

Through the Week Ending 11/28/2015 (13 Weeks)

Sales by Game	FY 2014 *	FY 2015 **	FY 2016	\$ Change		% Change	
				FY 2016 to FY 2014	FY 2016 to FY 2015	FY 2016 to FY 2014	FY 2016 to FY 2015
Scratch Tickets	\$ 779,544,149	\$ 800,467,023	\$ 827,689,791	\$ 48,145,642	\$ 27,222,768	6.2%	3.4%
Lotto Texas	33,290,690	29,520,295	31,260,932	-2,029,758	1,740,637	-6.1%	5.9%
Lotto Extra	4,224,038	4,452,198	5,265,455	1,041,417	813,257	24.7%	18.3%
Pick 3	62,621,371	61,037,356	61,220,345	-1,401,026	182,989	-2.2%	0.3%
Pick 3 Sum It Up	1,236,995	1,173,290	1,233,001	-3,994	59,712	-0.3%	5.1%
Cash Five	13,102,547	12,238,738	11,394,487	-1,708,060	-844,251	-13.0%	-6.9%
Texas Two Step	13,831,226	14,091,384	13,070,338	-760,888	-1,021,046	-5.5%	-7.2%
Mega Millions	36,956,867	39,970,013	31,406,881	-5,549,986	-8,563,132	-15.0%	-21.4%
Megaplier	8,160,270	9,026,527	7,813,404	-346,866	-1,213,123	-4.3%	-13.4%
Daily 4	20,687,771	20,450,063	20,920,441	232,670	470,378	1.1%	2.3%
Daily 4 Sum It Up	1,274,446	1,231,357	1,080,407	-194,039	-150,950	-15.2%	-12.3%
Powerball	60,013,769	43,994,363	49,291,952	-10,721,817	5,297,589	-17.9%	12.0%
Power Play	6,922,978	5,709,988	6,438,099	-484,879	728,111	-7.0%	12.8%
All or Nothing	11,872,624	9,747,402	7,723,966	-4,148,658	-2,023,436	-34.9%	-20.8%
Monopoly	-	2,134,780	-	-	-2,134,780	-	-100.0%
Texas Triple Chance	-	-	6,464,607	6,464,607	6,464,607	-	-
Total	\$ 1,053,739,740	\$ 1,055,244,775	\$ 1,082,274,105	\$ 28,534,365	\$ 27,029,330	2.7%	2.6%

* 2 extra days

** 1 extra day

Texas Lottery Commission
Fiscal Year to Date Cumulative Average Sales Comparison
Unaudited

Through the Week Ending 11/28/2015 (13 Weeks)

Sales by Game	FY 2014	FY 2015	FY 2016
Scratch Tickets	\$ 8,566,419	\$ 8,894,078	\$ 9,299,885
Lotto Texas	365,832	328,003	351,246
Lotto Extra	46,418	49,469	59,162
Pick 3	688,147	678,193	687,869
Pick 3 Sum It Up	13,593	13,037	13,854
Cash Five	143,984	135,986	128,028
Texas Two Step	151,991	156,571	146,858
Mega Millions	406,119	444,111	352,886
Megaplier	89,673	100,295	87,791
Daily 4	227,338	227,223	235,061
Daily 4 Sum It Up	14,005	13,682	12,139
Powerball	659,492	488,826	553,842
Power Play	76,077	63,444	72,338
All or Nothing	130,468	108,304	86,786
Monopoly	- **	50,828	-
Texas Triple Chance	-	-	* 102,613
Total	\$ <u>11,579,558</u>	\$ <u>11,752,050</u>	\$ <u>12,190,360</u>

thru 11/30/2013
91 days

**

thru 11/29/2014
90 days
42 days

*

thru 11/28/2015
89 days
63 days

Texas Lottery Commission
Fiscal Year Over Year Change in Sales
Unaudited
FY 2016 Compared to FY 2015

			SCRATCH TICKETS				DRAW GAMES				TOTAL SALES			
FY 2016			FY 2016	FY 2015	Difference	% change - Cumulative Sales	FY 2016	FY 2015	Difference	% change - Cumulative Sales	FY 2016	FY 2015	Difference	% change - Cumulative Sales
Week	Week Ending													
1	9/5/2015 *		\$49,534,249	\$54,911,801	(\$5,377,552)	-9.8%	\$17,091,724	\$17,482,488	(\$390,765)	-2.2%	\$66,625,973	\$72,394,289	(\$5,768,317)	-8.0%
2	9/12/2015		\$61,566,291	\$61,436,533	\$129,758	0.2%	\$20,630,922	\$19,097,081	\$1,533,841	8.0%	\$82,197,213	\$80,533,614	\$1,663,599	2.1%
3	9/19/2015		\$63,530,657	\$60,959,234	\$2,571,423	4.2%	\$20,327,253	\$20,567,894	(\$240,641)	-1.2%	\$83,857,910	\$81,527,128	\$2,330,782	2.9%
4	9/26/2015		\$61,731,400	\$59,710,056	\$2,021,344	3.4%	\$22,252,290	\$19,920,828	\$2,331,462	11.7%	\$83,983,690	\$79,630,884	\$4,352,806	5.5%
5	10/3/2015		\$67,048,415	\$62,119,854	\$4,928,561	7.9%	\$25,436,791	\$18,531,421	\$6,905,370	37.3%	\$92,485,206	\$80,651,275	\$11,833,931	14.7%
6	10/10/2015		\$66,049,706	\$61,253,665	\$4,796,041	7.8%	\$18,138,977	\$18,985,332	(\$846,355)	-4.5%	\$84,188,683	\$80,238,997	\$3,949,687	4.9%
7	10/17/2015		\$65,073,593	\$60,230,048	\$4,843,545	8.0%	\$17,776,414	\$19,538,402	(\$1,761,988)	-9.0%	\$82,850,007	\$79,768,450	\$3,081,558	3.9%
8	10/24/2015		\$64,087,437	\$62,384,112	\$1,703,325	2.7%	\$18,450,464	\$21,475,643	(\$3,025,179)	-14.1%	\$82,537,901	\$83,859,755	(\$1,321,854)	-1.6%
9	10/31/2015		\$66,025,374	\$63,404,713	\$2,620,661	4.1%	\$19,568,150	\$23,568,817	(\$4,000,668)	-17.0%	\$85,593,524	\$86,973,530	(\$1,380,007)	-1.6%
10	11/7/2015		\$68,137,192	\$65,486,719	\$2,650,473	4.0%	\$20,398,351	\$23,749,032	(\$3,350,681)	-14.1%	\$88,535,543	\$89,235,751	(\$700,208)	-0.8%
11	11/14/2015		\$65,449,428	\$61,745,521	\$3,703,907	6.0%	\$20,169,382	\$17,449,604	\$2,719,779	15.6%	\$85,618,810	\$79,195,125	\$6,423,686	8.1%
12	11/21/2015		\$68,364,421	\$66,353,583	\$2,010,838	3.0%	\$17,174,606	\$17,108,084	\$66,522	0.4%	\$85,539,027	\$83,461,667	\$2,077,360	2.5%
13	11/28/2015		\$61,091,628	\$60,471,184	\$620,444	1.0%	\$17,168,993	\$17,303,129	(\$134,136)	-0.8%	\$78,260,621	\$77,774,313	\$486,309	0.6%
14	12/5/2015			\$66,648,696				\$18,862,425				\$85,511,121		
15	12/12/2015			\$65,708,630				\$18,649,598				\$84,358,228		
16	12/19/2015			\$68,551,298				\$19,051,100				\$87,602,398		
17	12/26/2015			\$73,858,618				\$20,006,357				\$93,864,975		
18	1/2/2016			\$67,733,268				\$21,355,167				\$89,088,435		
19	1/9/2016			\$64,745,641				\$22,265,347				\$87,010,988		
20	1/16/2016			\$64,015,166				\$23,694,617				\$87,709,783		
21	1/23/2016			\$62,569,156				\$19,765,442				\$82,334,598		
22	1/30/2016			\$68,001,588				\$22,877,000				\$90,878,588		
23	2/6/2016			\$75,677,650				\$31,662,209				\$107,339,859		
24	2/13/2016			\$75,368,712				\$46,091,747				\$121,460,459		
25	2/20/2016			\$74,833,076				\$19,865,172				\$94,698,248		
26	2/27/2016			\$69,918,013				\$19,735,352				\$89,653,365		
27	3/5/2016			\$74,848,961				\$19,946,068				\$94,795,029		
28	3/12/2016			\$70,079,409				\$20,044,562				\$90,123,971		
29	3/19/2016			\$70,368,686				\$18,480,795				\$88,849,481		
30	3/26/2016			\$70,280,600				\$17,595,205				\$87,875,805		
31	4/2/2016			\$74,369,952				\$18,378,917				\$92,748,869		
32	4/9/2016			\$67,416,817				\$18,594,844				\$86,011,661		
33	4/16/2016			\$68,393,316				\$18,104,632				\$86,497,948		
34	4/23/2016			\$70,078,182				\$17,957,150				\$88,035,332		
35	4/30/2016			\$71,744,718				\$18,961,113				\$90,705,831		
36	5/7/2016			\$73,415,978				\$20,210,341				\$93,626,319		
37	5/14/2016			\$72,152,109				\$20,362,774				\$92,514,883		
38	5/21/2016			\$70,399,950				\$21,246,276				\$91,646,226		
39	5/28/2016			\$68,547,554				\$22,227,946				\$90,775,500		
40	6/4/2016			\$71,254,006				\$20,739,703				\$91,993,709		
41	6/11/2016			\$65,878,375				\$17,216,403				\$83,094,778		
42	6/18/2016			\$66,658,742				\$17,340,531				\$83,999,273		

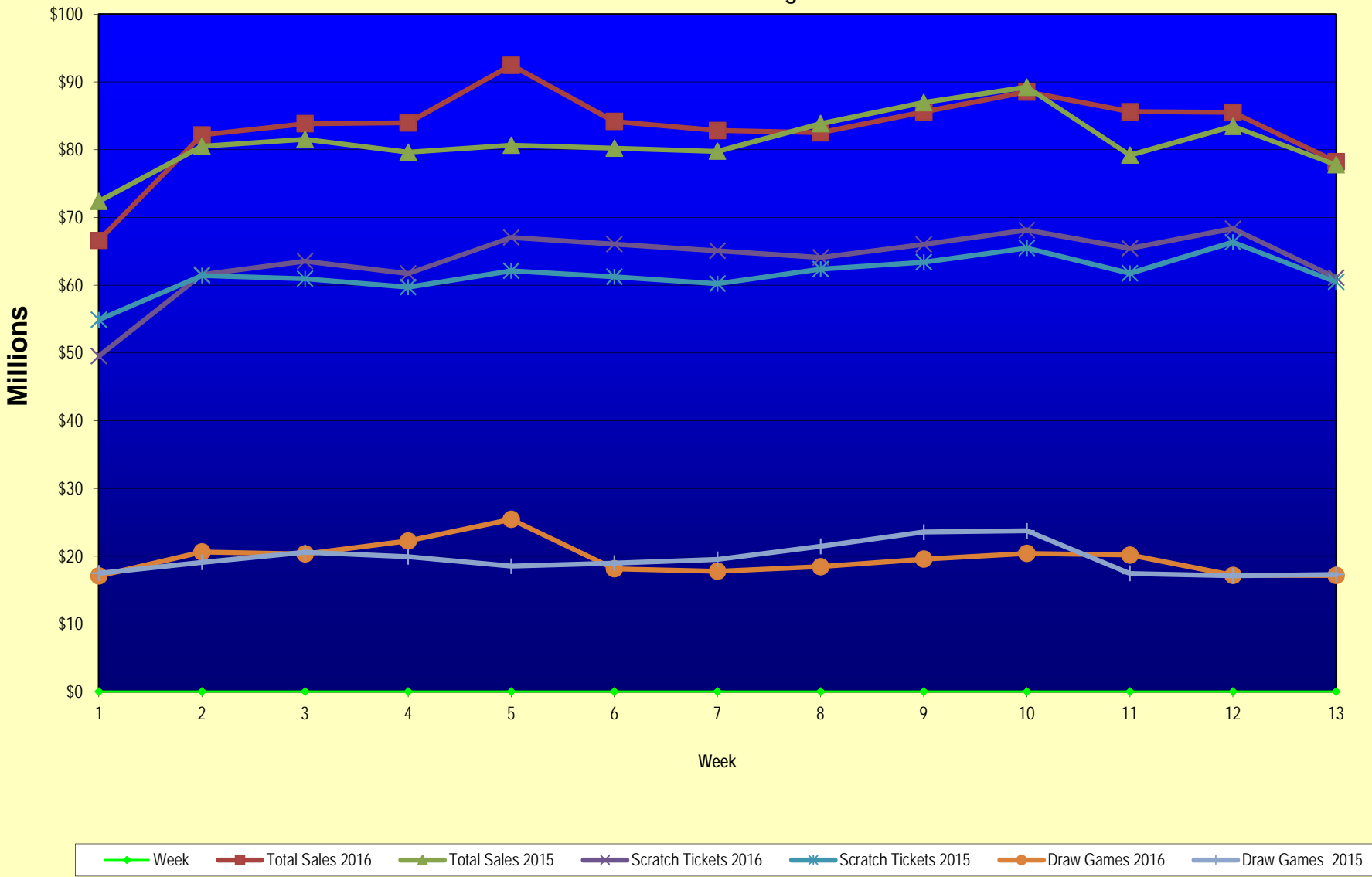
Texas Lottery Commission
Fiscal Year Over Year Change in Sales
Unaudited
FY 2016 Compared to FY 2015

			SCRATCH TICKETS				DRAW GAMES				TOTAL SALES			
FY 2016			FY 2016	FY 2015	Difference	% change - Cumulative Sales	FY 2016	FY 2015	Difference	% change - Cumulative Sales	FY 2016	FY 2015	Difference	% change - Cumulative Sales
Week	Week	Ending												
43	6/25/2016			\$65,282,276				\$16,873,368				\$82,155,644		
44	7/2/2016			\$67,757,752				\$18,007,540				\$85,765,292		
45	7/9/2016			\$64,718,254				\$18,203,985				\$82,922,239		
46	7/16/2016			\$64,957,977				\$18,792,785				\$83,750,762		
47	7/23/2016			\$62,541,241				\$18,229,965				\$80,771,206		
48	7/30/2016			\$66,468,460				\$17,742,489				\$84,210,949		
49	8/6/2016			\$62,412,598				\$17,331,374				\$79,743,972		
50	8/13/2016			\$62,089,389				\$17,501,599				\$79,590,988		
51	8/20/2016			\$62,437,148				\$17,779,458				\$80,216,606		
52	8/27/2016			\$61,403,206				\$18,529,560				\$79,932,766		
	8/31/2016 **			\$17,309,621				\$3,279,958				\$20,589,579		
Total thru Current Week			\$827,689,791	\$800,467,023	\$27,222,768	3.4%	\$254,584,314	\$254,777,752	(\$193,438)	-0.1%	\$1,082,274,105	\$1,055,244,775	\$27,029,330	2.6%
Fiscal Year Total			\$827,689,791	\$3,481,361,812			\$254,584,314	\$1,048,338,613			\$1,082,274,105	\$4,529,700,425		

* FY 16 includes 5 days; FY 15 includes 6 days

** FY 16 includes 4 days; FY 15 includes 2 days

Texas Lottery Commission Fiscal Year Over Year Change in Sales



Note: Week 1 is not a full week of sales as this report is prepared on a Fiscal Year basis.

Texas Lottery Commission
Scratch Tickets by Price Point
Sales, Prize Expense, Sales Contribution and Payout Percentage With Year Over Year Changes
Unaudited

Fiscal Year	Price Point	# of Active Games	FY Sales	% of Scratch Ticket Sales	Year over Year Change in Sales	FY Prize Expense	Year over Year Change in Prize Expense	FY Sales Contribution	Year over Year Change in Contribution	Average Prize Payout %	Year over Year Change in Payout %
2015	\$1.00	16	40,498,527	5.1%		24,947,981		15,550,546		61.6%	2.8%
Through	\$2.00	25	83,637,466	10.4%		55,573,675		28,063,791		66.4%	2.5%
11/29/2014	\$3.00	11	79,645,800	9.9%		52,493,321		27,152,479		65.9%	0.4%
	\$5.00	36	253,345,760	31.6%		172,106,491		81,239,269		67.9%	0.0%
	\$10.00	13	161,628,400	20.2%		114,097,169		47,531,231		70.6%	0.4%
	\$20.00	8	144,843,920	18.1%		108,615,035		36,228,885		75.0%	0.2%
	\$50.00	3	36,867,150	4.6%		28,650,876		8,216,274		77.7%	0.1%
Total		112	\$800,467,023			\$556,484,549		\$243,982,474		69.5%	0.9%
2016	\$1.00	13	36,754,981	4.4%		22,255,680		14,499,301		60.6%	0.1%
thru	\$2.00	25	81,386,690	9.8%		52,950,705		28,435,985		65.1%	-0.7%
11/28/2015	\$3.00	9	72,377,250	8.7%		47,623,511		24,753,739		65.8%	-0.2%
	\$5.00	39	264,548,340	32.0%		179,727,296		84,821,044		67.9%	0.0%
	\$10.00	14	166,059,760	20.1%		116,353,712		49,706,048		70.1%	-0.3%
	\$20.00	9	165,650,820	20.0%		124,141,878		41,508,942		74.9%	0.0%
	\$50.00	3	40,911,950	4.9%		31,818,551		9,093,399		77.8%	0.0%
Total		112	\$827,689,791			\$574,871,333		\$252,818,458		69.5%	0.0%
Variance	\$1.00	-3	-3,743,546		-9.2%	-2,692,301	-10.8%	-1,051,245	-6.8%	-1.05%	
2015 to	\$2.00	0	-2,250,776		-2.7%	-2,622,969	-4.7%	372,193	1.3%	-1.39%	
2014	\$3.00	-2	-7,268,550		-9.1%	-4,869,810	-9.3%	-2,398,740	-8.8%	-0.11%	
	\$5.00	3	11,202,580		4.4%	7,620,805	4.4%	3,581,775	4.4%	0.00%	
	\$10.00	1	4,431,360		2.7%	2,256,543	2.0%	2,174,817	4.6%	-0.52%	
	\$20.00	1	20,806,900		14.4%	15,526,842	14.3%	5,280,058	14.6%	-0.05%	
	\$50.00	0	4,044,800		11.0%	3,167,675	11.1%	877,125	10.7%	0.06%	
Total		0	\$27,222,768		3.4%	\$18,386,784	3.3%	\$8,835,984	3.6%	-0.07%	

Notes - Scratch Ticket Variances

Texas Lottery Commission
Scratch Tickets by Price Point
Sales, Prize Expense, Sales Contribution and Payout Percentage With Year Over Year Changes
Unaudited

			FY 2016		FY 2015	Difference
Sales	\$1 - \$5		\$455,067,261		\$457,127,553	-\$2,060,292
Prize Exp.	\$1 - \$5		\$302,557,192		\$305,121,468	-\$2,564,276
Sales Cont.	\$1 - \$5		\$152,510,069		\$152,006,085	\$503,984
Prize Exp. %	\$1 - \$5		66.5%		66.7%	-0.3%
			FY 2016		FY 2015	Difference
Sales	\$10 - \$50		\$372,622,530		\$343,339,470	\$29,283,060
Prize Exp.	\$10 - \$50		\$272,314,140		\$251,363,080	\$20,951,060
Sales Cont.	\$10 - \$50		\$100,308,390		\$91,976,390	\$8,332,000
Prize Exp. %	\$10 - \$50		73.1%		73.2%	-0.1%
			FY 2016		FY 2015	Difference
Sales	Scratch		\$827,689,791		\$800,467,023	\$27,222,768
Prize Exp.	Scratch		\$574,871,333		\$556,484,549	\$18,386,784
Sales Cont.	Scratch		\$252,818,458		\$243,982,474	\$8,835,984
Prize Exp. %	Scratch		69.5%		69.5%	-0.1%

			FY 2016		FY 2015	Difference
Sales	\$1 - \$10		\$621,127,021		\$618,755,953	\$2,371,068
Prize Exp.	\$1 - \$10		\$418,910,904		\$419,218,637	-\$307,733
Sales Cont.	\$1 - \$10		\$202,216,117		\$199,537,316	\$2,678,801
Prize Exp. %	\$1 - \$10		67.4%		67.8%	-0.3%
			FY 2016		FY 2015	Difference
Sales	\$20 - \$50		\$206,562,770		\$181,711,070	\$24,851,700
Prize Exp.	\$20 - \$50		\$155,960,428		\$137,265,911	\$18,694,517
Sales Cont.	\$20 - \$50		\$50,602,342		\$44,445,159	\$6,157,183
Prize Exp. %	\$20 - \$50		75.5%		75.5%	0.0%
			FY 2016		FY 2015	Difference
Sales	Scratch		\$827,689,791		\$800,467,023	\$27,222,768
Prize Exp.	Scratch		\$574,871,333		\$556,484,549	\$18,386,784
Sales Cont.	Scratch		\$252,818,458		\$243,982,474	\$8,835,984
Prize Exp. %	Scratch		69.5%		69.5%	-0.1%

Texas Lottery Commission
Weekly Sales Summary
& Comparison to Previous Week
 Unaudited

	Week Ending 11/28/2015	% of Sales	Week Ending 11/21/2015	% of Sales	\$ change	% change
	<u>THIS WEEK</u>		<u>LAST WEEK</u>			
Total Sales	<u>\$78,260,621</u>		<u>\$85,539,027</u>		<u>-\$7,278,406</u>	-8.51%
Scratch Tickets	<u>\$61,091,628</u>	78.1%	<u>\$68,364,421</u>	79.9%	<u>-\$7,272,793</u>	-10.64%
Lotto	\$2,113,171	2.7%	\$2,173,857	2.5%	-\$60,686	-2.79%
Lotto Extra	\$364,947	0.5%	\$369,519	0.4%	-\$4,572	-1.24%
Pick 3	\$4,523,108	5.8%	\$4,674,293	5.5%	-\$151,186	-3.23%
Pick 3 Sum It Up	\$87,438	0.1%	\$88,988	0.1%	-\$1,550	-1.74%
Cash Five	\$825,047	1.1%	\$862,630	1.0%	-\$37,583	-4.36%
Texas Two Step	\$904,825	1.2%	\$825,054	1.0%	\$79,771	9.67%
Mega Millions	\$1,785,419	2.3%	\$1,830,909	2.1%	-\$45,490	-2.48%
Megaplier	\$478,828	0.6%	\$489,485	0.6%	-\$10,657	-2.18%
Daily 4	\$1,591,416	2.0%	\$1,632,096	1.9%	-\$40,680	-2.49%
Daily 4 Sum It Up	\$82,363	0.1%	\$82,077	0.1%	\$286	0.35%
Powerball	\$2,886,666	3.7%	\$2,553,907	3.0%	\$332,759	13.03%
Power Play	\$406,251	0.5%	\$370,594	0.4%	\$35,657	9.62%
All or Nothing	\$546,614	0.7%	\$586,348	0.7%	-\$39,734	-6.78%
Texas Triple Chance	\$572,902	0.7%	\$634,850	0.7%	-\$61,948	-9.76%
Total Draw Game Sales	<u>\$17,168,993</u>		<u>\$17,174,606</u>		<u>-\$5,613</u>	-0.03%

* Totals may not sum due to rounding.

Texas Lottery Commission
Weekly Sales Summary
Unaudited

SCRATCH TICKETS
TOP TEN SELLING GAMES

For the week ending: 11/28/2015

Rank	Price Point	Game	Sales (Millions)
1	\$ 20	HOLIDAY GAME BOOK	\$ 3.534
2	\$ 10	HAPPY HOLIDAYS	\$ 3.110
3	\$ 5	HOLIDAY TREASURES	\$ 2.551
4	\$ 20	100X THE CASH	\$ 2.518
5	\$ 10	CASHWORD MULTIPLIER	\$ 2.498
6	\$ 20	\$1,000,000 INSTANT CASHOUT	\$ 2.388
7	\$ 50	DIAMOND DOLLARS	\$ 2.305
8	\$ 20	\$500,000,000 CASH	\$ 2.130
9	\$ 5	WILD 10'S	\$ 2.121
10	\$ 3	TEXAS LOTERIA	\$ 2.108

Texas Lottery Commission
Prize Payout Tracking Report
Unaudited

Through the week ending: 11/28/2015

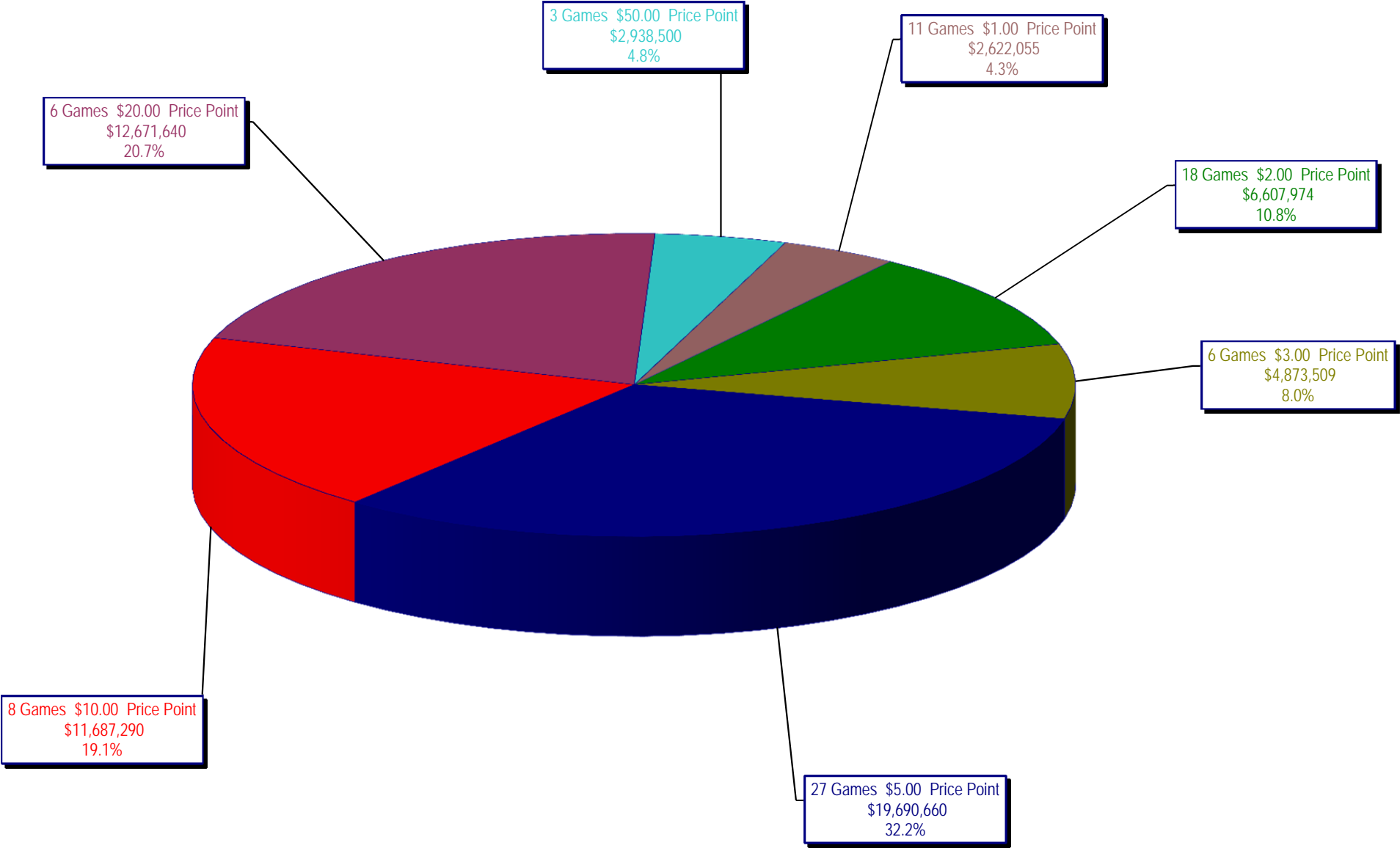
Draw Game Sales

		FY Sales Through Week Ending 11/28/2015		FY Prize Expense Through Week Ending 11/28/2015	Actual* Prize Payout	Base Payout (Prize Pool)
Lotto	\$	31,260,932	\$	21,542,257	68.91%	50.00%
Lotto Extra		5,265,455		2,651,832	50.36%	53.70%
Pick 3		61,220,345		29,962,800	48.94%	50.00%
Pick 3 Sum It Up		1,233,001		632,661	51.31%	50.00%
Cash Five		11,394,487		5,697,401	50.00%	50.00%
Texas Two Step		13,070,338		6,641,507	50.81%	50.00%
Mega Millions		31,406,881		16,205,938	51.60%	50.00%**
Megaplier		7,813,404		3,950,081	50.56%	N/A
Daily 4		20,920,441		9,671,300	46.23%	50.00%
Daily 4 Sum It Up		1,080,407		393,336	36.41%	50.00%
Powerball		49,291,952		24,871,035	50.46%	50.00%**
Power Play		6,438,099		3,248,330	50.45%	N/A
All or Nothing		7,723,966		4,103,442	53.13%	55.98%
Texas Triple Chance		6,464,607		4,127,827	63.85%	50.00%
Totals	\$	254,584,314	\$	133,699,746	52.52%	

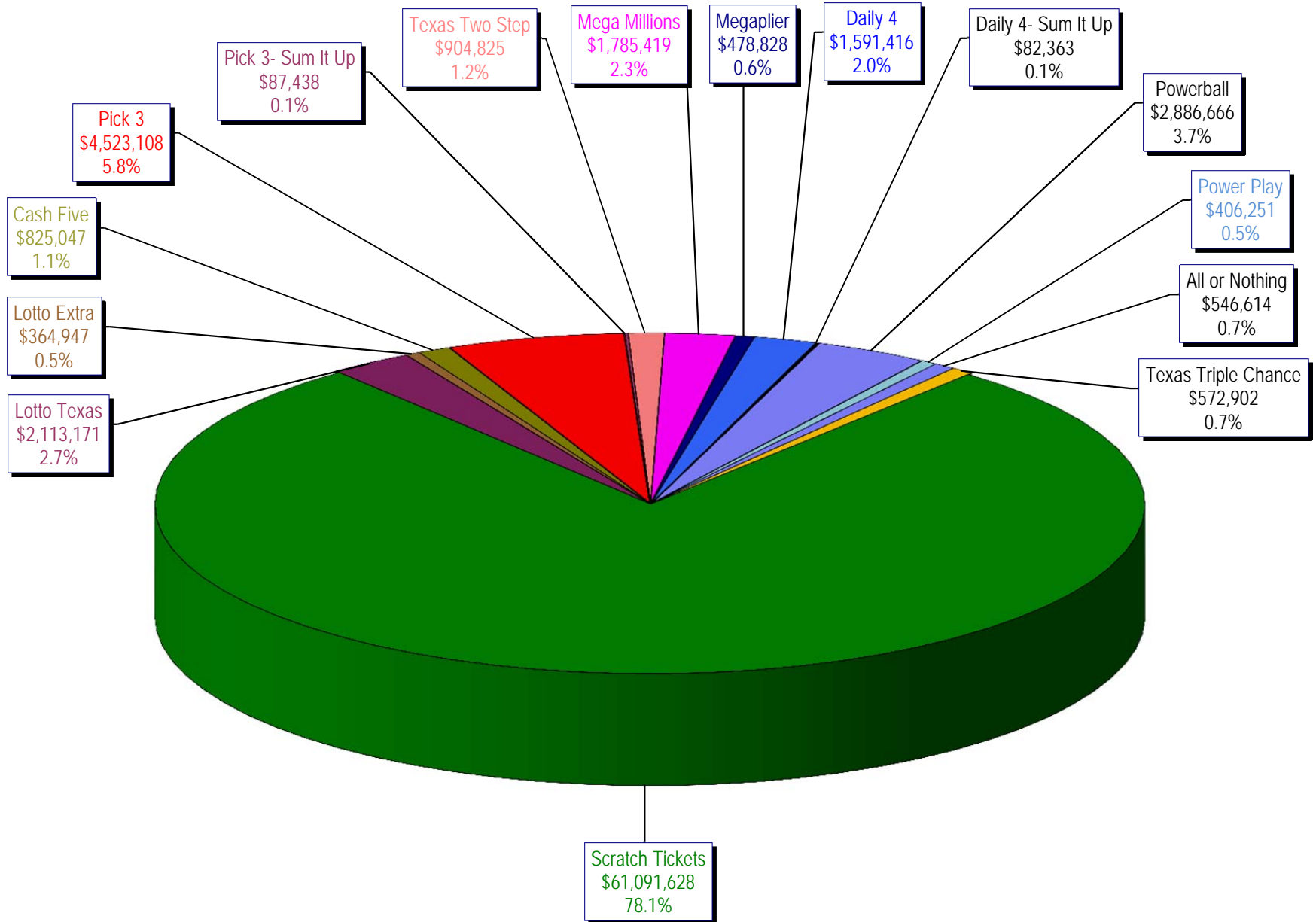
* Before Unclaimed Prizes

** Estimated; depends on # of guaranteed prizes won in Texas

Texas Lottery Commission
Scratch Ticket Sales
For the week ending 11/28/15
(Unaudited)



Texas Lottery Commission
All Game Sales
For the week ending 11/28/15
(Unaudited)



Texas Lottery Commission - Weekly Sales Summary for FY 2016 (Unaudited)

Week Ended	Scratch Tickets	New Games & Dates	Lotto Texas	Jackpot W S	Lotto Extra	Pick 3	Pick 3 Sum It Up	Cash Five	Texas Two Step	Jackpot M TH	Mega Millions	Jackpot T F	Megaplier	Daily 4	Daily 4 Sum It Up	Powerball	Jackpot W S	Power Play	All or Nothing	Monopoly	Jackpot F	Texas Triple Chance	Total	Per Cap.
9/5/2015*	66,843,870	0	2,788,509	25 26	466,121	5,249,348	117,979	956,126	1,253,100	425 575	2,366,640	74 85	608,901	1,725,027	93,067	3,586,482	120 133	484,769	675,614	0			87,215,551	3.24
9/12/2015	61,566,291	1717 (\$1.N); 1718 (\$5.N); 1748 (\$10.N); 1696 (\$3.N) - 9/08/15	2,793,426	26.5 27.75	465,451	4,974,238	103,203	919,536	1,423,604	725 950	2,511,039	95 106	629,091	1,641,226	86,539	3,927,126	149 167	518,060	638,384	0			82,197,213	3.05
9/19/2015	63,530,657	0	2,845,557	28.25 29.5	475,307	4,715,566	95,242	928,275	854,109	200 225	1,817,155	15 20	487,946	1,647,829	81,483	5,082,782	185 208	639,614	656,388	0			83,857,910	3.11
9/26/2015	61,731,400	1720 (\$2.N); 1721 (\$5.N); 1715 (\$5.N) - 9/21/15	2,815,638	30 30.75	468,584	4,735,629	97,118	924,334	1,048,752	300 450	1,860,438	25 31	499,201	1,628,350	82,200	6,648,092	235 267	790,427	653,528	0			83,983,690	3.12
10/3/2015	67,048,415	0	3,034,763	31.5 32.25	502,043	4,925,789	100,522	919,217	1,347,552	600 725	2,053,673	39 47	539,290	1,662,320	88,291	8,036,576	301 40	884,785	616,594	0		725,376	92,485,206	3.43
10/10/2015	66,049,706	1722 (\$1.N); 1723 (\$5.N); 1711 (\$20.N) - 10/05/15	2,175,801	5 5.25	366,506	4,803,855	97,005	899,614	1,141,865	925 200	2,113,720	55 65	535,411	1,636,542	86,150	2,572,748	50 60	372,480	593,616	0		743,664	84,188,683	3.12
10/17/2015	65,073,593	0	2,133,286	5 5	358,076	4,629,752	92,453	876,040	824,622	200 225	2,286,703	75 84	568,477	1,576,323	79,576	2,638,956	70 80	377,157	580,870	0		754,124	82,850,007	3.07
10/24/2015	64,087,437	1724 (\$2.N); 1768 (\$5.N); 1726 (\$10.N) - 10/19/15	2,099,176	5.25 5.5	358,217	4,515,381	92,071	860,960	991,931	300 425	2,600,946	93 105	626,019	1,553,788	80,225	2,946,077	90 100	411,192	562,378	0		752,104	82,537,901	3.06
10/31/2015	66,025,374	0	2,165,101	5.75 6	368,559	4,653,961	91,360	873,751	944,275	550 200	2,945,749	117 129	695,705	1,621,009	85,560	3,327,954	110 127	455,266	573,258	0		766,642	85,593,524	3.18
11/7/2015	68,137,192	1727 (\$1.N); 1728 (\$2.N); 1729 (\$5.N) - 11/02/15	2,232,267	6.25 6.5	379,508	4,977,693	96,887	891,111	911,796	225 300	3,416,380	144 164	795,028	1,688,298	86,418	3,071,581	142 40	425,312	599,980	0		826,093	88,535,543	3.28
11/14/2015	65,449,428	0	2,185,621	6.75 7	373,102	4,726,211	93,030	870,215	1,087,101	425 575	4,139,462	180 200	938,757	1,614,727	82,536	2,437,413	50 60	357,760	574,596	0		688,852	85,618,810	3.18
11/21/2015	68,364,421	1730 (\$2.N); 1783 (\$2.N); 1731 (\$5.N) - 11/16/15 1778 (\$2.N) - 11/18/15	2,173,857	7.25 7.5	369,519	4,674,293	88,988	862,630	825,054	200 225	1,830,909	15 20	489,485	1,632,096	82,077	2,553,907	70 80	370,594	586,348	0		634,850	85,539,027	3.17
11/28/2015	61,091,628	0	2,113,171	7.75 8.25	364,947	4,523,108	87,438	825,047	904,825	300 400	1,785,419	25 31	478,828	1,591,416	82,363	2,886,666	90 100	406,251	546,614	0		572,902	78,260,621	2.90
weekly change	-10.6%		-2.8%		-1.2%	-3.2%	-1.7%	-4.4%	9.7%		-2.5%		-2.2%	-2.5%	0.3%	13.0%		9.6%	-6.8%	0.0%		-9.8%	-8.5%	
	SALES		SALES		SALES	SALES	SALES	SALES	SALES	SALES	SALES	SALES	SALES	SALES	SALES	SALES	SALES	SALES	SALES	SALES	SALES	SALES	SALES	% of Sales
Calendar Year to date	3,195,729,528		113,916,551		18,728,320	229,401,018	4,840,256	45,005,820	49,991,870		126,118,115		30,868,822	79,322,072	4,357,480	193,966,761		24,778,437	32,439,244	(390)		6,464,607	4,155,928,511	100.0%
Fiscal Year to date 2016	827,689,791		31,260,932		5,265,455	61,220,345	1,233,001	11,394,487	13,070,338		31,406,881		7,813,404	20,920,441	1,080,407	49,291,952		6,438,099	7,723,966	0		6,464,607	1,082,274,105	100.0%
*Full week includes 2 days from FY15																								