



WEEKLY SALES SUMMARY

Unaudited

Week Ending: 11/29/08

Texas Lottery Commission
Fiscal Year to Date Sales Comparison
Unaudited

Through the week ending 11/29/2008 (13 weeks)

Sales by Game	FY 2007 *	FY 2008 **	FY 2009	\$ Change		% Change	
				FY 2009 to FY 2007	FY 2009 to FY 2008	FY 2009 to FY 2007	FY 2009 to FY 2008
Instants	\$ 690,863,747	\$ 683,666,946	\$ 644,650,905	\$ -46,212,842	\$ -39,016,041	-6.7%	-5.7%
Lotto Texas	50,971,009	54,660,660	44,160,851	-6,810,158	-10,499,809	-13.4%	-19.2%
Pick 3	77,000,702	71,201,477	66,856,943	-10,143,759	-4,344,534	-13.2%	-6.1%
Pick 3 Sum It Up	-	655,076	1,427,975	1,427,975	772,899	-	-
Cash 5	22,115,163	19,595,211	17,274,241	-4,840,922	-2,320,970	-21.9%	-11.8%
Texas Two Step	15,102,501	10,811,378	11,377,347	-3,725,154	565,969	-24.7%	5.2%
Mega Millions	36,256,048	33,408,698	35,195,591	-1,060,458	1,786,893	-2.9%	5.3%
Megaplier	8,886,245	8,640,749	8,894,647	8,402	253,898	0.1%	2.9%
Daily 4	-	9,903,374	10,105,137	10,105,137	201,763	-	-
Daily 4 Sum It Up	-	2,846,656	1,332,551	1,332,551	-1,514,105	-	-
Total	\$ 901,195,415	\$ 895,390,224	\$ 841,276,186	\$ -59,919,229	\$ -54,114,038	-6.6%	-6.0%

* 3 extra days in 2007 ** 2 extra days in 2008

Texas Lottery Commission
Fiscal Year Over Year Change in Sales
Unaudited
FY 2009 Compared to FY 2008

Week	FY 2009 Week Ending	INSTANT TICKETS				ON-LINE GAMES				TOTAL SALES			
		FY 2009	FY 2008	Difference	% change - Cumulative Sales	FY 2009	FY 2008	Difference	% change - Cumulative Sales	FY 2009	FY 2008	Difference	% change - Cumulative Sales
1	9/6/2008**	\$44,890,104	\$62,376,229	(\$17,486,125)	-28.0%	\$14,722,011	\$19,372,224	(\$4,650,213)	-24.0%	\$59,612,115	\$81,748,453	(\$22,136,338)	-27.1%
2	9/13/2008	\$46,309,551	\$52,458,866	(\$6,149,315)	-20.6%	\$13,704,860	\$16,926,163	(\$3,221,303)	-21.7%	\$60,014,411	\$69,385,029	(\$9,370,618)	-20.8%
3	9/20/2008	\$42,923,171	\$49,998,934	(\$7,075,763)	-18.6%	\$12,291,263	\$15,792,283	(\$3,501,020)	-21.8%	\$55,214,434	\$65,791,217	(\$10,576,783)	-19.4%
4	9/27/2008	\$47,042,801	\$49,894,175	(\$2,851,374)	-15.6%	\$14,222,339	\$14,800,514	(\$578,175)	-17.9%	\$61,265,140	\$64,694,689	(\$3,429,549)	-16.2%
5	10/4/2008	\$50,747,162	\$53,486,863	(\$2,739,701)	-13.5%	\$15,784,472	\$16,618,430	(\$833,958)	-15.3%	\$66,531,634	\$70,105,293	(\$3,573,659)	-14.0%
6	10/11/2008	\$49,763,789	\$50,918,020	(\$1,154,231)	-11.7%	\$15,622,498	\$15,601,410	\$21,088	-12.9%	\$65,386,287	\$66,519,430	(\$1,133,143)	-12.0%
7	10/18/2008	\$49,299,053	\$50,532,253	(\$1,233,200)	-10.5%	\$15,167,940	\$15,682,666	(\$514,726)	-11.6%	\$64,466,993	\$66,214,919	(\$1,747,926)	-10.7%
8	10/25/2008	\$49,977,581	\$50,347,450	(\$369,869)	-9.3%	\$14,525,843	\$15,586,516	(\$1,060,673)	-11.0%	\$64,503,424	\$65,933,966	(\$1,430,542)	-9.7%
9	11/1/2008	\$50,346,542	\$53,953,733	(\$3,607,191)	-9.0%	\$14,838,845	\$16,775,983	(\$1,937,139)	-11.1%	\$65,185,387	\$70,729,716	(\$5,544,330)	-9.5%
10	11/8/2008	\$54,860,087	\$53,635,090	\$1,224,997	-7.9%	\$16,057,069	\$15,912,791	\$144,278	-9.9%	\$70,917,156	\$69,547,881	\$1,369,275	-8.3%
11	11/15/2008	\$53,484,812	\$51,254,401	\$2,230,411	-6.8%	\$15,829,819	\$15,797,076	\$32,744	-9.0%	\$69,314,631	\$67,051,477	\$2,263,155	-7.3%
12	11/22/2008	\$52,806,511	\$50,897,817	\$1,908,694	-5.9%	\$16,460,748	\$15,801,720	\$659,028	-7.9%	\$69,267,259	\$66,699,537	\$2,567,722	-6.4%
13	11/29/2008	\$52,199,741	\$53,913,115	(\$1,713,374)	-5.7%	\$17,397,576	\$17,055,505	\$342,072	-7.1%	\$69,597,317	\$70,968,620	(\$1,371,303)	-6.0%
14	12/6/2008		\$55,702,697				\$17,900,717				\$73,603,414		
15	12/13/2008		\$53,703,516				\$17,820,841				\$71,524,357		
16	12/20/2008		\$57,592,769				\$17,436,233				\$75,029,002		
17	12/27/2008		\$57,696,003				\$14,743,680				\$72,439,683		
18	1/3/2009		\$57,935,952				\$15,704,450				\$73,640,402		
19	1/10/2009		\$55,360,542				\$15,691,540				\$71,052,082		
20	1/17/2009		\$54,920,166				\$16,259,669				\$71,179,835		
21	1/24/2009		\$54,439,890				\$16,691,724				\$71,131,614		
22	1/31/2009		\$57,464,382				\$17,968,227				\$75,432,609		
23	2/7/2009		\$60,715,019				\$20,097,338				\$80,812,357		
24	2/14/2009		\$57,093,143				\$22,179,908				\$79,273,051		
25	2/21/2009		\$57,627,047				\$27,230,539				\$84,857,586		
26	2/28/2009		\$55,591,667				\$17,016,118				\$72,607,785		
27	3/7/2009		\$56,837,481				\$16,690,193				\$73,527,674		
28	3/14/2009		\$54,587,112				\$16,448,165				\$71,035,277		
29	3/21/2009		\$53,098,937				\$16,639,184				\$69,738,121		
30	3/28/2009		\$53,933,689				\$17,698,625				\$71,632,314		
31	4/4/2009		\$57,598,982				\$17,665,411				\$75,264,393		
32	4/11/2009		\$53,954,185				\$15,860,784				\$69,814,969		
33	4/18/2009		\$53,946,736				\$16,452,676				\$70,399,412		
34	4/25/2009		\$51,533,006				\$16,873,949				\$68,406,955		
35	5/2/2009		\$53,250,568				\$18,202,103				\$71,452,671		
36	5/9/2009		\$54,060,849				\$18,422,562				\$72,483,411		
37	5/16/2009		\$54,010,641				\$20,728,360				\$74,739,001		
38	5/23/2009		\$50,377,032				\$15,461,384				\$65,838,416		
39	5/30/2009		\$49,545,080				\$15,175,370				\$64,720,450		
40	6/6/2009		\$53,702,986				\$15,982,166				\$69,685,152		

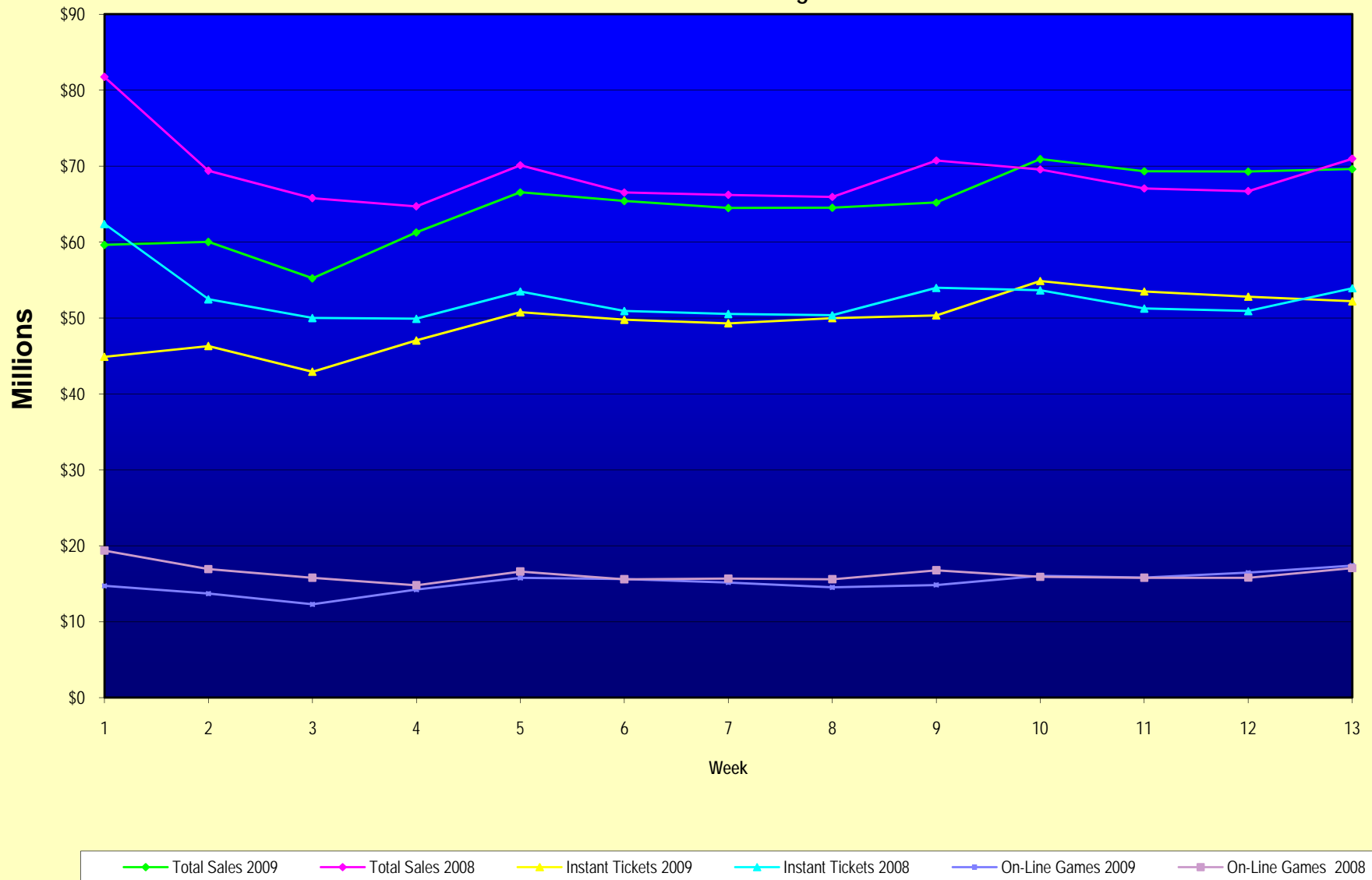
Note: Week 1 is not a full week of sales as this report is prepared on a Fiscal Year basis.

Texas Lottery Commission
Fiscal Year Over Year Change in Sales
Unaudited
FY 2009 Compared to FY 2008

Week	FY 2009 Week Ending	INSTANT TICKETS				ON-LINE GAMES				TOTAL SALES			
		FY 2009	FY 2008	Difference	% change - Cumulative Sales	FY 2009	FY 2008	Difference	% change - Cumulative Sales	FY 2009	FY 2008	Difference	% change - Cumulative Sales
41	6/13/2009		\$51,171,483				\$16,589,087				\$67,760,570		
42	6/20/2009		\$50,650,362				\$15,728,484				\$66,378,846		
43	6/27/2009		\$49,258,266				\$15,250,905				\$64,509,171		
44	7/4/2009		\$53,393,355				\$16,270,619				\$69,663,974		
45	7/11/2009		\$53,127,756				\$16,914,922				\$70,042,678		
46	7/18/2009		\$51,593,146				\$17,752,738				\$69,345,884		
47	7/25/2009		\$49,902,181				\$16,706,145				\$66,608,326		
48	8/1/2009		\$49,605,420				\$16,254,383				\$65,859,803		
49	8/8/2009		\$50,961,907				\$16,770,496				\$67,732,403		
50	8/15/2009		\$49,452,511				\$16,749,487				\$66,201,998		
51	8/22/2009		\$49,249,518				\$17,286,302				\$66,535,820		
52	8/29/2009		\$49,468,928				\$18,109,997				\$67,578,925		
53	9/5/2009		\$6,054,239				\$493,109				\$6,547,348		
Total thru Current Week		\$644,650,905	\$683,666,946	(\$39,016,041)	-5.7%	\$196,625,281	\$211,723,278	(\$15,097,997)	-7.1%	\$841,276,186	\$895,390,224	(\$54,114,038)	-6.0%
Fiscal Year Total		\$644,650,905	\$2,783,836,095			\$196,625,281	\$887,641,858			\$841,276,186	\$3,671,477,953		

** FY 2009 includes 6 days; FY 2008 includes 8 days
FY 2009 average daily sales are \$9,242,258. Two days at average daily sales are \$18,484,516.

Texas Lottery Commission Fiscal Year Over Year Change in Sales



Note: Week 1 is not a full week of sales as this report is prepared on a Fiscal Year basis.

Texas Lottery Commission
Instant Tickets by Price Point
Sales, Prize Expense, Sales Contribution and Payout Percentage With Year Over Year Changes
Unaudited

Fiscal Year	Price Point	# of Active Games	FY Sales	% of Instant Ticket Sales	Year over Year Change in Sales	FY Prize Expense	Year over Year Change in Prize Expense	FY Sales Contribution	Year over Year Change in Contribution	Average Prize Payout %	Year over Year Change in Payout %
2008	\$1.00	36	60,426,536	8.8%		36,324,179		24,102,357		60.1%	
thru	\$2.00	41	116,517,122	17.0%		75,751,865		40,765,257		65.0%	
12/1/2007	\$3.00	11	53,743,017	7.9%		35,430,282		18,312,735		65.9%	
	\$5.00	32	180,128,250	26.3%		122,091,724		58,036,526		67.8%	
	\$7.00	10	49,977,305	7.3%		33,974,998		16,002,307		68.0%	
	\$10.00	14	103,166,396	15.1%		72,221,530		30,944,866		70.0%	
	\$20.00	6	40,501,800	5.9%		29,128,103		11,373,697		71.9%	
	\$25.00	2	31,356,600	4.6%		22,763,083		8,593,517		72.6%	
	\$30.00	2	8,863,020	1.3%		6,406,356		2,456,664		72.3%	
	\$50.00	2	38,986,900	5.7%		28,120,350		10,866,550		72.1%	
Total		156	\$683,666,946			\$462,212,473		\$221,454,473		67.6%	
2009	\$1.00	32	54,751,336	8.5%		32,997,571		\$21,753,765		60.3%	0.3%
thru	\$2.00	28	112,171,478	17.4%		72,756,400		\$39,415,078		64.9%	-0.6%
11/29/2008	\$3.00	13	72,244,035	11.2%		47,488,460		\$24,755,575		65.7%	0.0%
	\$5.00	29	193,578,409	30.0%		131,662,486		\$61,915,923		68.0%	0.1%
	\$7.00	6	26,739,342	4.1%		18,189,363		\$8,549,979		68.0%	0.0%
	\$10.00	12	85,059,810	13.2%		59,531,921		\$25,527,889		70.0%	0.0%
	\$20.00	7	63,750,700	9.9%		45,756,172		\$17,994,528		71.8%	0.0%
	\$25.00	1	2,381,575	0.4%		1,732,224		\$649,351		72.7%	0.2%
	\$30.00	3	5,999,370	0.9%		4,348,747		\$1,650,623		72.5%	0.1%
	\$50.00	3	27,974,850	4.3%		20,231,023		\$7,743,827		72.3%	0.2%
Total		134	\$644,650,905			\$434,694,366		\$209,956,539		67.4%	-0.3%
Variance	\$1.00	-4	-5,675,200		-9.4%	-3,326,608	-9.2%	-2,348,592	-9.7%	0.16%	
2009 to	\$2.00	-13	-4,345,644		-3.7%	-2,995,466	-4.0%	-1,350,178	-3.3%	-0.15%	
2008	\$3.00	2	18,501,018		34.4%	12,058,177	34.0%	6,442,841	35.2%	-0.19%	
	\$5.00	-3	13,450,159		7.5%	9,570,761	7.8%	3,879,398	6.7%	0.23%	
	\$7.00	-4	-23,237,963		-46.5%	-15,785,635	-46.5%	-7,452,328	-46.6%	0.04%	
	\$10.00	-2	-18,106,586		-17.6%	-12,689,610	-17.6%	-5,416,976	-17.5%	-0.02%	
	\$20.00	1	23,248,900		57.4%	16,628,069	57.1%	6,620,831	58.2%	-0.14%	
	\$25.00	-1	-28,975,025		-92.4%	-21,030,859	-92.4%	-7,944,166	-92.4%	0.14%	
	\$30.00	1	-2,863,650		-32.3%	-2,057,609	-32.1%	-806,041	-32.8%	0.20%	
	\$50.00	1	-11,012,050		-28.2%	-7,889,328	-28.1%	-3,122,722	-28.7%	0.19%	
Total		-22	-\$39,016,041		-5.7%	-\$27,518,107	-6.0%	-\$11,497,934	-5.2%	-0.18%	

Texas Lottery Commission
Instant Tickets by Price Point
Sales, Prize Expense, Sales Contribution and Payout Percentage With Year Over Year Changes
Unaudited

Notes - Instant Ticket Variances

		FY 2009		FY 2008	Difference
Sales	\$1 - \$7	\$459,484,600		\$460,792,230	-\$1,307,630
Prize Exp.	\$1 - \$7	\$303,094,279		\$303,573,049	-\$478,770
Sales Cont.	\$1 - \$7	\$156,390,321		\$157,219,181	-\$828,860
Prize Exp. %	\$1 - \$7	66.0%		65.9%	0.1%
		FY 2009		FY 2008	Difference
Sales	\$10 - \$50	\$185,166,305		\$222,874,716	-\$37,708,411
Prize Exp.	\$10 - \$50	\$131,600,087		\$158,639,424	-\$27,039,337
Sales Cont.	\$10 - \$50	\$53,566,218		\$64,235,292	-\$10,669,074
Prize Exp. %	\$10 - \$50	71.1%		71.2%	-0.1%
		FY 2009		FY 2008	Difference
Sales	Instant	\$644,650,905		\$683,666,946	-\$39,016,041
Prize Exp.	Instant	\$434,694,366		\$462,212,473	-\$27,518,107
Sales Cont.	Instant	\$209,956,539		\$221,454,473	-\$11,497,934
Prize Exp. %	Instant	67.4%		67.6%	-0.2%

		FY 2009		FY 2008	Difference
Sales	\$1 - \$10	\$544,544,410		\$563,958,626	-\$19,414,216
Prize Exp.	\$1 - \$10	\$362,626,200		\$375,794,580	-\$13,168,380
Sales Cont.	\$1 - \$10	\$181,918,210		\$188,164,046	-\$6,245,836
Prize Exp. %	\$1 - \$10	66.6%		66.6%	0.0%
		FY 2009		FY 2008	Difference
Sales	\$20 - \$50	\$100,106,495		\$119,708,320	-\$19,601,825
Prize Exp.	\$20 - \$50	\$72,068,166		\$86,417,893	-\$14,349,727
Sales Cont.	\$20 - \$50	\$28,038,329		\$33,290,427	-\$5,252,098
Prize Exp. %	\$20 - \$50	72.0%		72.2%	-0.2%
		FY 2009		FY 2008	Difference
Sales	Instant	\$644,650,905		\$683,666,946	-\$39,016,041
Prize Exp.	Instant	\$434,694,366		\$462,212,473	-\$27,518,107
Sales Cont.	Instant	\$209,956,539		\$221,454,473	-\$11,497,934
Prize Exp. %	Instant	67.4%		67.6%	-0.2%

Texas Lottery Commission
Weekly Sales Summary
& Comparison to Previous Week
 Unaudited

	Week Ending 11/29/08		Week Ending 11/22/08			
	<u>THIS WEEK</u>	% of Sales	<u>LAST WEEK</u>	% of Sales	<u>\$ change</u>	<u>% change</u>
Total Sales	<u>\$69,597,317</u>		<u>\$69,267,259</u>		<u>\$330,059</u>	0.48%
Instant Tickets	<u>\$52,199,741</u>	75.0%	<u>\$52,806,511</u>	76.2%	<u>-\$606,770</u>	-1.15%
Lotto Texas	\$3,585,374	5.2%	\$3,452,481	5.0%	\$132,893	3.85%
Pick 3	\$5,340,784	7.7%	\$5,329,591	7.7%	\$11,193	0.21%
Pick 3 Sum It Up	\$111,443	0.2%	\$108,862	0.2%	\$2,582	2.37%
Cash 5	\$1,315,233	1.9%	\$1,358,271	2.0%	-\$43,038	-3.17%
Texas Two Step	\$686,077	1.0%	\$743,950	1.1%	-\$57,873	-7.78%
Mega Millions	\$4,441,715	6.4%	\$3,666,517	5.3%	\$775,198	21.14%
Megaplier	\$968,906	1.4%	\$847,201	1.2%	\$121,705	14.37%
Daily 4	\$845,476	1.2%	\$849,078	1.2%	-\$3,602	-0.42%
Daily 4 Sum It Up	\$102,569	0.1%	\$104,798	0.2%	-\$2,229	-2.13%
Total Online Sales	<u>\$17,397,576</u>		<u>\$16,460,748</u>		<u>\$936,829</u>	5.69%

* Totals may not sum due to rounding.

Texas Lottery Commission
Weekly Sales Summary
Unaudited

INSTANT TICKETS
TOP TEN SELLING GAMES

For the Week Ending : 11/29/08

Rank	Price Point	Game	Sales (Millions)
1	\$ 10	JINGLE JUNGLE BUCKS	\$ 3.631
2	\$ 5	HOLIDAY TREASURES	\$ 2.765
3	\$ 5	FANTASTIC 5'S	\$ 2.758
4	\$ 5	MERRY MONEY	\$ 2.561
5	\$ 7	SIZZLIN' RED 7'S	\$ 2.377
6	\$ 20	TEXAS \$50 MILLION CLUB	\$ 2.306
7	\$ 10	SET FOR LIFE	\$ 1.764
8	\$ 3	BONUS CASHWORD	\$ 1.617
9	\$ 2	SILVER BELLS	\$ 1.603
10	\$ 2	BREAK THE BANK	\$ 1.595

Texas Lottery Commission
Prize Payout Tracking Report
Unaudited

Through Week Ending 11/29/08

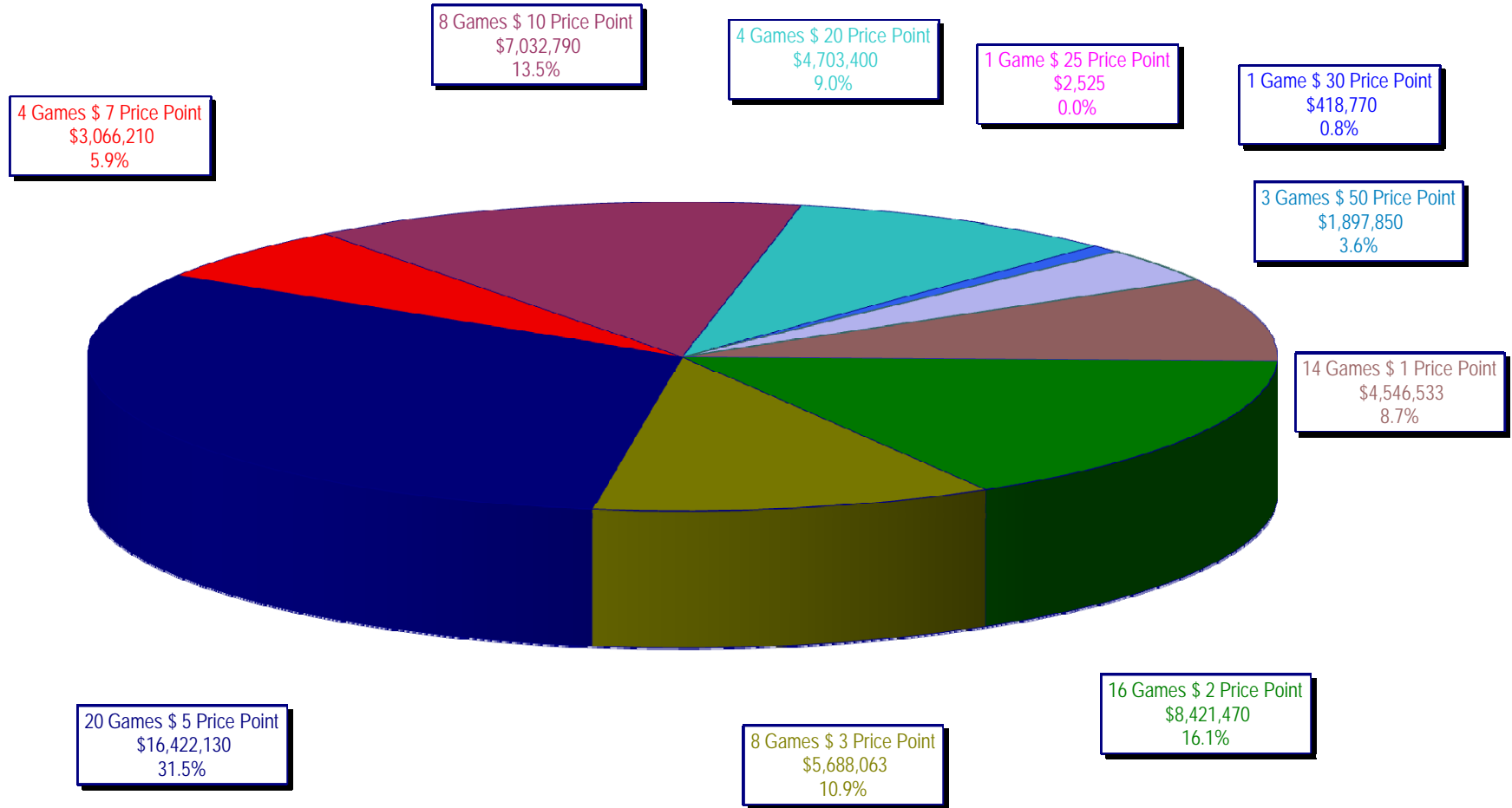
On-Line Sales

		FY Sales Through Week Ending 11/29/2008		FY Prize Expense Through Week Ending 11/29/2008	Actual* Prize Payout	Base Payout (Prize Pool)
Lotto	\$	44,160,851	\$	22,175,474	50.22%	50.00%
Pick 3		66,856,943		31,903,900	47.72%	50.00%
Pick 3 Sum It Up		1,427,975		641,052	44.89%	50.00%
Cash 5		17,274,241		8,732,238	50.55%	50.00%
Texas Two-Step		11,377,347		5,815,466	51.11%	50.00%
Mega Millions		35,195,591		16,274,221	46.24%	50.00%**
Megaplier		8,894,647		2,703,842	30.40%	N/A
Daily 4		10,105,137		4,598,025	45.50%	50.00%
Daily 4-Sum It Up		1,332,551		496,161	37.23%	50.00%
Totals	\$	196,625,281	\$	93,340,379	47.47%	

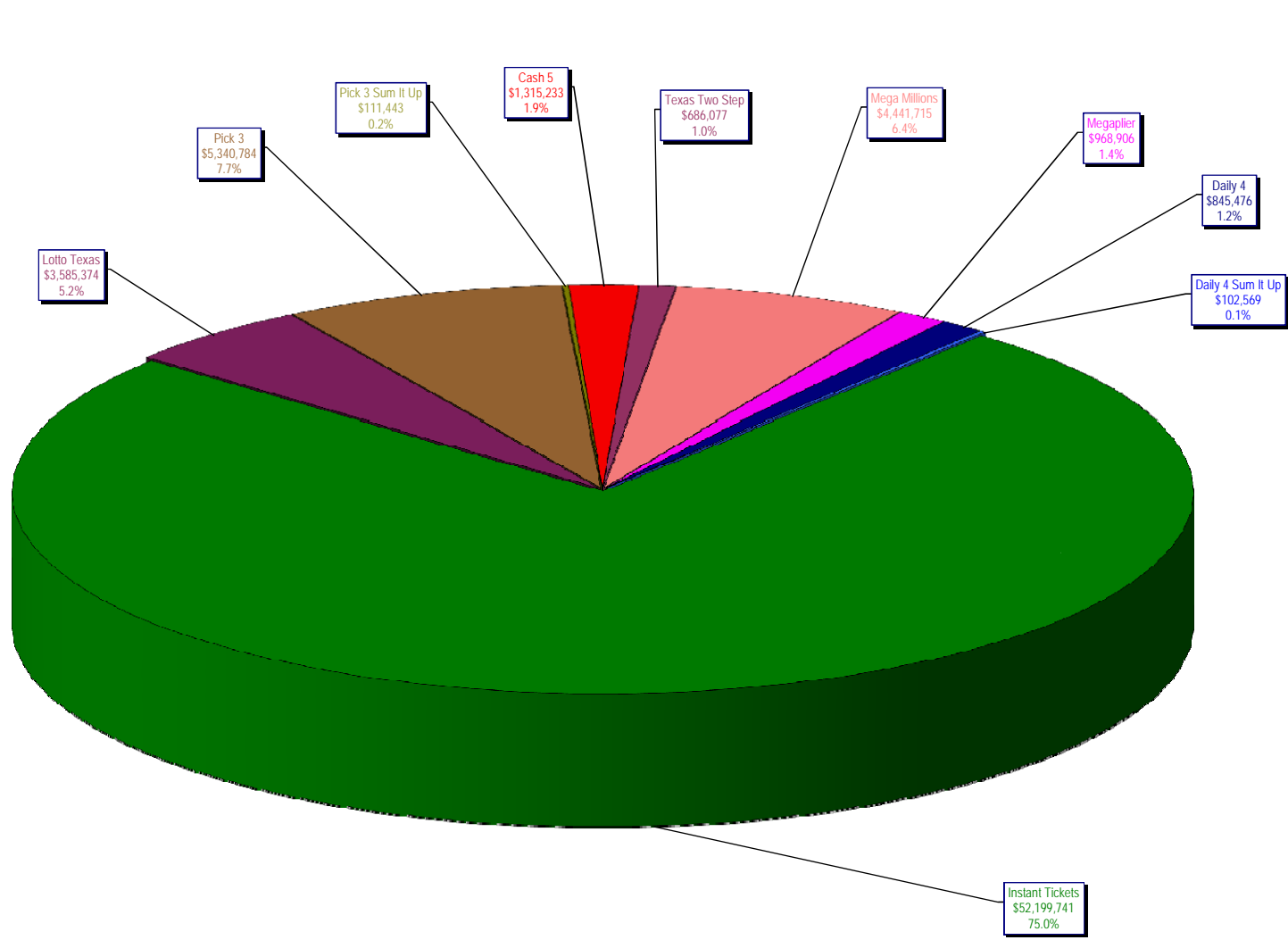
* Before Unclaimed Prizes

** Estimated; depends on # of guaranteed prizes won in Texas

Texas Lottery Commission
Instant Ticket Sales
For the Week Ending 11/29/2008
(Unaudited)



Texas Lottery Commission
All Game Sales
For the Week Ending 11/29/2008
(Unaudited)



* Totals may not sum due to rounding.

Texas Lottery Commission - Weekly Sales Summary for FY 2008 (Unaudited)

Week Ended	Instant Games	New Games & Dates	Lotto Texas	Jackpot W	S	Pick 3	Pick 3 Sum It Up	Cash 5	Texas Two Step	Jackpot M/T	TH/F	Mega Millions	Jackpot T	F	Megaplier	Daily 4	Daily 4 Sum It Up	Total	Per Cap.	
9/6/2008	50,944,343.00	1108 (\$2,N), 1088 (\$3, N) - 9/01/08	3,378,718.00	5	6	5,436,414.00	122,123.00	1,396,622.00	890,346.00	350	450	2,445,490.00	12	16	649,090.00	786,482.50	109,834.00	66,159,462.50	2.77	
9/13/2008	46,309,551.00	1109 (\$1,N), 1098 (\$5, N) - 9/08/08	3,020,089.00	7	8	4,705,585.50	105,899.00	1,279,412.00	856,199.00	600	200	2,327,214.00	24	12	617,672.00	696,633.00	96,156.50	60,014,411.00	2.51	
9/20/2008	42,923,171.00	0	3,054,093.00	9	10	4,121,734.50	90,718.00	1,155,350.00	637,792.00	225	250	1,978,127.00	15	12	540,225.00	627,210.00	86,013.50	55,214,434.00	2.31	
9/27/2008	47,042,801.00	1111 (\$2,N), 1099 (\$5, N) - 9/22/08	3,427,671.00	11	12	4,821,563.00	103,189.50	1,288,062.00	834,307.00	275	425	2,322,862.00	16	24	617,085.00	709,741.50	97,858.00	61,265,140.00	2.56	
10/4/2008	50,747,162.00	1113 (\$1,N) 9/29/08	3,675,683.00	13	14	5,305,711.00	116,332.50	1,369,040.00	1,074,874.00	525	650	2,671,927.00	32	42	693,845.00	770,782.50	106,277.00	66,531,634.00	2.78	
10/11/2008	49,763,789.00	0	3,732,365.00	15	16	5,287,094.00	114,665.50	1,370,334.00	1,305,250.00	800	975	2,306,070.00	12	16	622,120.00	778,204.00	106,395.00	65,386,286.50	2.74	
10/18/2008	49,299,053.00	1117 (\$3,N), 1118 (\$20,N) - 10/13/08	3,780,438.00	17	18	5,149,258.00	109,530.00	1,355,601.00	741,849.00	200	200	2,500,644.00	23	32	652,198.00	776,366.00	102,056.00	64,466,993.00	2.70	
10/25/2008	49,977,581.00	1119 (\$1,N), 1120 (\$5,N) - 10/20/08	3,210,762.00	4	5	5,099,671.00	107,104.50	1,339,079.00	789,649.00	225	275	2,456,965.00	42	12	641,206.00	778,434.00	102,972.50	64,503,424.00	2.70	
11/1/2008	50,346,542.00	1121 (\$2,N), 1122 (\$10,N) - 10/27/08	3,325,641.00	6	7	5,234,124.00	109,983.00	1,339,046.00	946,035.00	375	475	2,347,596.00	16	23	626,235.00	805,572.00	104,612.50	65,185,386.50	2.73	
11/8/2008	54,860,087.00	1123 (\$3,N), 1124 (\$7,N) - 11/03/08; 1109 (\$3,N) - 11/05/08; 1063 (\$3,N) - 11/07/08	3,290,417.00	4	5	5,686,701.00	118,495.00	1,397,985.00	1,158,101.00	625	750	2,729,302.50	31	42	692,662.00	871,230.00	112,175.50	70,917,156.00	2.97	
11/15/2008	53,484,812.00	1125 (\$1, N), 1126 (\$5,N) - 11/10/08	3,336,934.00	6	7	5,459,984.00	112,884.00	1,366,024.00	766,955.00	200	225	3,102,251.00	51	62	749,736.00	830,957.00	104,094.00	69,314,631.00	2.90	
11/22/2008	52,806,511.00	0	3,452,481.00	8	9	5,329,591.00	108,861.50	1,358,271.00	743,950.00	200	200	3,666,517.00	73	86	847,201.00	849,077.50	104,797.50	69,267,258.50	2.90	
11/29/2008	52,199,741.00	1127 (\$2,N), 1128 (\$5,N) - 11/24/08	3,585,374.00	10	11	5,340,783.50	111,443.00	1,315,233.00	686,077.00	200	225	4,441,715.00	96	111	968,906.00	845,475.50	102,569.00	69,597,317.00	2.91	
weekly change	-1.15%		3.85%			0.21%	2.37%	-3.17%	-7.78%			21.14%			14.37%	-0.42%	-2.13%	0.48%		
	SALES		SALES			SALES	SALES	SALES	SALES			SALES			SALES	SALES	SALES	SALES	SALES	% of Sales
Startup to date	34,125,236,907.00		10,323,257,898.00			3,365,575,895.00	7,913,804.50	2,136,430,251.00	437,643,065.00			961,334,185.50			227,102,681.00	52,322,108.00	9,671,354.50	51,854,622,121.50	100.0%	
Calendar Year to date	2,504,031,305.00		178,343,436.00			260,115,144.50	6,500,201.50	67,304,720.00	45,241,225.00			160,814,886.50			38,154,028.00	38,946,692.50	6,090,065.00	3,305,541,704.00	100.0%	
Fiscal Year to date 2009	644,650,905.00		44,160,851.00			66,856,942.50	1,427,974.50	17,274,241.00	11,377,347.00			35,195,590.50			8,894,647.00	10,105,136.50	1,332,551.00	841,276,186.00	100.0%	