



WEEKLY SALES SUMMARY

Unaudited

[Week Ending: 11/29/2014](#)

Texas Lottery Commission
Fiscal Year to Date Sales Comparison
Unaudited

Through the Week Ending 11/29/2014 (13 Weeks)

Sales by Game	FY 2013 *	FY 2014 **	FY 2015	\$ Change		% Change	
				FY 2015 to FY 2013	FY 2015 to FY 2014	FY 2015 to FY 2013	FY 2015 to FY 2014
Instants	\$ 752,341,270	\$ 779,544,149	\$ 800,467,023	\$ 48,125,753	\$ 20,922,874	6.4%	2.7%
Lotto Texas	40,901,754	33,290,690	29,520,295	-11,381,459	-3,770,395	-27.8%	-11.3%
Lotto Extra	-	4,224,038	4,452,198	4,452,198	228,160	-	5.4%
Pick 3	66,810,346	62,621,371	61,037,356	-5,772,990	-1,584,015	-8.6%	-2.5%
Pick 3 Sum It Up	1,255,865	1,236,995	1,173,290	-82,576	-63,706	-6.6%	-5.2%
Cash Five	14,338,767	13,102,547	12,238,738	-2,100,029	-863,809	-14.6%	-6.6%
Texas Two Step	13,131,205	13,831,226	14,091,384	960,179	260,158	7.3%	1.9%
Mega Millions	27,642,783	36,956,867	39,970,013	12,327,230	3,013,146	44.6%	8.2%
Megaplier	6,388,991	8,160,270	9,026,527	2,637,536	866,257	41.3%	10.6%
Daily 4	17,498,404	20,687,771	20,450,063	2,951,659	-237,709	16.9%	-1.1%
Daily 4 Sum It Up	1,185,804	1,274,446	1,231,357	45,553	-43,089	3.8%	-3.4%
Powerball	92,415,597	60,013,769	43,994,363	-48,421,234	-16,019,406	-52.4%	-26.7%
Power Play	8,661,649	6,922,978	5,709,988	-2,951,661	-1,212,990	-34.1%	-17.5%
All or Nothing	24,856,935	11,872,624	9,747,402	-15,109,533	-2,125,222	-60.8%	-17.9%
Monopoly	-	-	2,134,780	2,134,780	2,134,780	-	-
Total	\$ 1,067,429,369	\$ 1,053,739,740	\$ 1,055,244,775	\$ -12,184,594	\$ 1,505,035	-1.1%	0.1%

* 2 extra days

** 1 extra day

Texas Lottery Commission
Fiscal Year to Date Cumulative Average Sales Comparison
Unaudited

Through the Week Ending 11/29/2014 (13 Weeks)

Sales by Game	FY 2013	FY 2014	FY 2015
Instant	\$ 8,177,623	\$ 8,566,419	\$ 8,894,078
Lotto Texas	444,584	365,832	328,003
Lotto Extra	-	46,418	49,469
Pick 3	726,199	688,147	678,193
Pick 3 Sum It Up	13,651	13,593	13,037
Cash Five	155,856	143,984	135,986
Texas Two Step	142,730	151,991	156,571
Mega Millions	300,465	406,119	444,111
Megaplier	69,446	89,673	100,295
Daily 4	190,200	227,338	227,223
Daily 4 Sum It Up	12,889	14,005	13,682
Powerball	1,004,517	659,492	488,826
Power Play	94,148	76,077	63,444
All or Nothing	* 295,916	130,468	108,304
Monopoly	-	- **	50,828
Total	\$ 11,628,225	\$ 11,579,558	\$ 11,752,050

thru 12/01/2012

92 days

*

84 days

thru 11/30/2013

91 days

thru 11/29/2014

90 days

**

42 days

Texas Lottery Commission
Fiscal Year Over Year Change in Sales
Unaudited
FY 2015 Compared to FY 2014

			INSTANT TICKETS				DRAW GAMES				TOTAL SALES			
Week	FY 2015		FY 2015	FY 2014	Difference	% change - Cumulative Sales	FY 2015	FY 2014	Difference	% change - Cumulative Sales	FY 2015	FY 2014	Difference	% change - Cumulative Sales
	Week	Ending												
1	9/6/2014 *		\$54,911,801	\$58,587,757	(\$3,675,956)	-6.3%	\$17,482,488	\$22,369,499	(\$4,887,011)	-21.8%	\$72,394,289	\$80,957,256	(\$8,562,967)	-10.6%
2	9/13/2014		\$61,436,533	\$57,135,931	\$4,300,602	7.5%	\$19,097,081	\$25,412,980	(\$6,315,899)	-24.9%	\$80,533,614	\$82,548,911	(\$2,015,297)	-2.4%
3	9/20/2014		\$60,959,234	\$59,018,194	\$1,941,040	3.3%	\$20,567,894	\$29,161,241	(\$8,593,347)	-29.5%	\$81,527,128	\$88,179,435	(\$6,652,307)	-7.5%
4	9/27/2014		\$59,710,056	\$57,927,984	\$1,782,072	3.1%	\$19,920,828	\$20,012,313	(\$91,485)	-0.5%	\$79,630,884	\$77,940,297	\$1,690,588	2.2%
5	10/4/2014		\$62,119,854	\$62,146,816	(\$26,962)	0.0%	\$18,531,421	\$20,043,557	(\$1,512,136)	-7.5%	\$80,651,275	\$82,190,373	(\$1,539,098)	-1.9%
6	10/11/2014		\$61,253,665	\$60,867,582	\$386,083	0.6%	\$18,985,332	\$19,480,962	(\$495,631)	-2.5%	\$80,238,997	\$80,348,544	(\$109,548)	-0.1%
7	10/18/2014		\$60,230,048	\$60,612,193	(\$382,145)	-0.6%	\$19,538,402	\$20,079,610	(\$541,209)	-2.7%	\$79,768,450	\$80,691,803	(\$923,354)	-1.1%
8	10/25/2014		\$62,384,112	\$59,548,277	\$2,835,835	4.8%	\$21,475,643	\$19,319,928	\$2,155,715	11.2%	\$83,859,755	\$78,868,205	\$4,991,550	6.3%
9	11/1/2014		\$63,404,713	\$61,710,236	\$1,694,477	2.7%	\$23,568,817	\$18,308,976	\$5,259,842	28.7%	\$86,973,530	\$80,019,212	\$6,954,319	8.7%
10	11/8/2014		\$65,486,719	\$61,668,594	\$3,818,125	6.2%	\$23,749,032	\$19,555,070	\$4,193,963	21.4%	\$89,235,751	\$81,223,664	\$8,012,088	9.9%
11	11/15/2014		\$61,745,521	\$60,057,025	\$1,688,496	2.8%	\$17,449,604	\$20,930,071	(\$3,480,468)	-16.6%	\$79,195,125	\$80,987,096	(\$1,791,972)	-2.2%
12	11/22/2014		\$66,353,583	\$63,118,266	\$3,235,317	5.1%	\$17,108,084	\$19,086,770	(\$1,978,687)	-10.4%	\$83,461,667	\$82,205,036	\$1,256,631	1.5%
13	11/29/2014		\$60,471,184	\$57,145,294	\$3,325,890	5.8%	\$17,303,129	\$20,434,618	(\$3,131,489)	-15.3%	\$77,774,313	\$77,579,912	\$194,401	0.3%
14	12/6/2014			\$59,883,783				\$22,791,842				\$82,675,625		
15	12/13/2014			\$60,310,298				\$35,859,153				\$96,169,451		
16	12/20/2014			\$65,088,999				\$46,832,745				\$111,921,744		
17	12/27/2014			\$67,721,619				\$18,218,091				\$85,939,710		
18	1/3/2015			\$67,162,991				\$19,140,745				\$86,303,736		
19	1/10/2015			\$65,049,914				\$17,954,333				\$83,004,247		
20	1/17/2015			\$62,731,830				\$18,900,213				\$81,632,043		
21	1/24/2015			\$59,085,886				\$19,558,830				\$78,644,716		
22	1/31/2015			\$64,099,096				\$20,764,006				\$84,863,102		
23	2/7/2015			\$67,717,353				\$22,433,672				\$90,151,025		
24	2/14/2015			\$69,949,998				\$25,572,367				\$95,522,365		
25	2/21/2015			\$72,422,148				\$31,832,665				\$104,254,813		
26	2/28/2015			\$72,883,830				\$21,827,140				\$94,710,970		
27	3/7/2015			\$73,726,744				\$22,528,352				\$96,255,096		
28	3/14/2015			\$71,026,808				\$25,171,358				\$96,198,166		
29	3/21/2015			\$69,174,125				\$25,837,564				\$95,011,689		
30	3/28/2015			\$66,886,917				\$18,604,870				\$85,491,787		
31	4/4/2015			\$71,218,020				\$19,883,667				\$91,101,687		
32	4/11/2015			\$65,970,648				\$18,875,485				\$84,846,133		
33	4/18/2015			\$64,922,280				\$19,723,048				\$84,645,328		
34	4/25/2015			\$60,578,829				\$18,978,148				\$79,556,977		
35	5/2/2015			\$64,244,545				\$19,029,632				\$83,274,177		
36	5/9/2015			\$65,679,029				\$19,350,478				\$85,029,507		
37	5/16/2015			\$63,627,971				\$19,865,609				\$83,493,580		
38	5/23/2015			\$61,902,451				\$19,892,846				\$81,795,297		
39	5/30/2015			\$61,264,953				\$20,014,636				\$81,279,589		
40	6/6/2015			\$64,019,948				\$21,782,886				\$85,802,834		
41	6/13/2015			\$59,742,598				\$19,736,748				\$79,479,346		
42	6/20/2015			\$59,010,863				\$17,095,336				\$76,106,199		

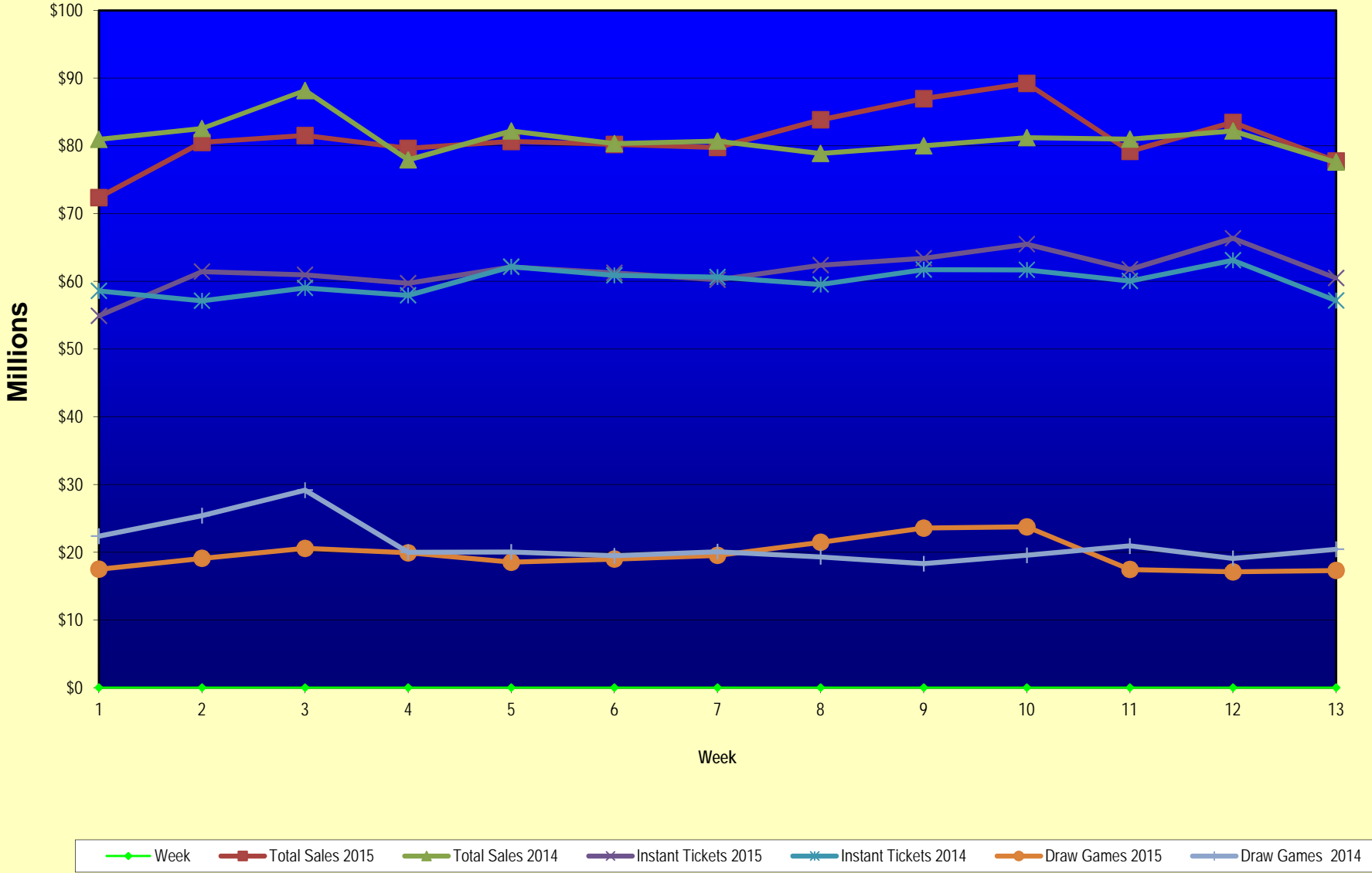
Texas Lottery Commission
Fiscal Year Over Year Change in Sales
Unaudited
FY 2015 Compared to FY 2014

			INSTANT TICKETS				DRAW GAMES				TOTAL SALES			
FY 2015			FY 2015	FY 2014	Difference	% change - Cumulative Sales	FY 2015	FY 2014	Difference	% change - Cumulative Sales	FY 2015	FY 2014	Difference	% change - Cumulative Sales
Week	Week	Ending												
43	6/27/2015			\$58,102,191				\$17,635,736				\$75,737,927		
44	7/4/2015			\$61,566,071				\$18,521,529				\$80,087,600		
45	7/11/2015			\$58,729,674				\$17,913,387				\$76,643,061		
46	7/18/2015			\$58,202,035				\$17,602,032				\$75,804,067		
47	7/25/2015			\$57,220,932				\$17,736,889				\$74,957,821		
48	8/1/2015			\$64,207,294				\$18,208,743				\$82,416,037		
49	8/8/2015			\$60,066,007				\$19,022,945				\$79,088,952		
50	8/15/2015			\$58,374,809				\$18,567,246				\$76,942,055		
51	8/22/2015			\$57,277,475				\$18,916,460				\$76,193,935		
52	8/29/2015			\$61,884,256				\$17,283,925				\$79,168,181		
	8/31/2015 **			\$7,949,803				\$706,956				\$8,656,759		
Total thru Current Week			\$800,467,023	\$779,544,149	\$20,922,874	2.7%	\$254,777,752	\$274,195,591	(\$19,417,839)	-7.1%	\$1,055,244,775	\$1,053,739,740	\$1,505,035	0.1%
Fiscal Year Total			\$800,467,023	\$3,280,229,170			\$254,777,752	\$1,104,367,893			\$1,055,244,775	\$4,384,597,063		

* FY 15 includes 6 days

** FY 15 includes 2 days; FY 14 includes 1 day

Texas Lottery Commission Fiscal Year Over Year Change in Sales



Note: Week 1 is not a full week of sales as this report is prepared on a Fiscal Year basis.

Texas Lottery Commission
Instant Tickets by Price Point
Sales, Prize Expense, Sales Contribution and Payout Percentage With Year Over Year Changes
Unaudited

Fiscal Year	Price Point	# of Active Games	FY Sales	% of Instant Ticket Sales	Year over Year Change in Sales	FY Prize Expense	Year over Year Change in Prize Expense	FY Sales Contribution	Year over Year Change in Contribution	Average Prize Payout %	Year over Year Change in Payout %
2014	\$1.00	21	44,994,209	5.8%		26,966,385		18,027,824		59.9%	-1.3%
Through	\$2.00	27	93,100,798	11.9%		60,452,850		32,647,948		64.9%	-0.1%
11/30/2013	\$3.00	14	84,788,097	10.9%		55,501,758		29,286,339		65.5%	-0.1%
	\$5.00	36	256,180,365	32.9%		174,032,565		82,147,800		67.9%	-0.1%
	\$10.00	12	146,910,100	18.8%		103,737,609		43,172,491		70.6%	-0.6%
	\$20.00	8	123,983,080	15.9%		92,842,955		31,140,125		74.9%	0.0%
	\$50.00	2	29,587,500	3.8%		22,970,233		6,617,267		77.6%	0.0%
Total		120	\$779,544,149			\$536,504,355		\$243,039,794		68.8%	-0.2%
2015	\$1.00	16	40,498,527	5.1%		24,947,981		15,550,546		61.6%	2.8%
thru	\$2.00	25	83,637,466	10.4%		55,573,675		28,063,791		66.4%	2.5%
11/29/2014	\$3.00	11	79,645,800	9.9%		52,493,321		27,152,479		65.9%	0.4%
	\$5.00	36	253,345,760	31.6%		172,106,491		81,239,269		67.9%	0.0%
	\$10.00	13	161,628,400	20.2%		114,097,169		47,531,231		70.6%	0.4%
	\$20.00	8	144,843,920	18.1%		108,615,035		36,228,885		75.0%	0.2%
	\$50.00	3	36,867,150	4.6%		28,650,876		8,216,274		77.7%	0.1%
Total		112	\$800,467,023			\$556,484,549		\$243,982,474		69.5%	0.9%
Variance	\$1.00	-5	-4,495,682		-10.0%	-2,018,404	-7.5%	-2,477,278	-13.7%	1.67%	
2015 to	\$2.00	-2	-9,463,332		-10.2%	-4,879,175	-8.1%	-4,584,157	-14.0%	1.51%	
2014	\$3.00	-3	-5,142,297		-6.1%	-3,008,436	-5.4%	-2,133,861	-7.3%	0.45%	
	\$5.00	0	-2,834,605		-1.1%	-1,926,074	-1.1%	-908,531	-1.1%	0.00%	
	\$10.00	1	14,718,300		10.0%	10,359,560	10.0%	4,358,740	10.1%	-0.02%	
	\$20.00	0	20,860,840		16.8%	15,772,081	17.0%	5,088,759	16.3%	0.10%	
	\$50.00	1	7,279,650		24.6%	5,680,642	24.7%	1,599,008	24.2%	0.08%	
Total		-8	\$20,922,874		2.7%	\$19,980,194	3.7%	\$942,680	0.4%	0.70%	

Notes - Instant Ticket Variances

Texas Lottery Commission
Instant Tickets by Price Point
Sales, Prize Expense, Sales Contribution and Payout Percentage With Year Over Year Changes
 Unaudited

		FY 2015		FY 2014		Difference
Sales	\$1 - \$5	\$457,127,553		\$479,063,469		-\$21,935,916
Prize Exp.	\$1 - \$5	\$305,121,468		\$316,953,557		-\$11,832,089
Sales Cont.	\$1 - \$5	\$152,006,085		\$162,109,912		-\$10,103,827
Prize Exp. %	\$1 - \$5	66.7%		66.2%		0.6%
		FY 2015		FY 2014		Difference
Sales	\$10 - \$50	\$343,339,470		\$300,480,680		\$42,858,790
Prize Exp.	\$10 - \$50	\$251,363,080		\$219,550,797		\$31,812,283
Sales Cont.	\$10 - \$50	\$91,976,390		\$80,929,883		\$11,046,507
Prize Exp. %	\$10 - \$50	73.2%		73.1%		0.1%
		FY 2015		FY 2014		Difference
Sales	Instant	\$800,467,023		\$779,544,149		\$20,922,874
Prize Exp.	Instant	\$556,484,549		\$536,504,355		\$19,980,194
Sales Cont.	Instant	\$243,982,474		\$243,039,794		\$942,680
Prize Exp. %	Instant	69.5%		68.8%		0.7%

		FY 2015		FY 2014		Difference
Sales	\$1 - \$10	\$618,755,953		\$625,973,569		-\$7,217,616
Prize Exp.	\$1 - \$10	\$419,218,637		\$420,691,167		-\$1,472,529
Sales Cont.	\$1 - \$10	\$199,537,316		\$205,282,402		-\$5,745,087
Prize Exp. %	\$1 - \$10	67.8%		67.2%		0.5%
		FY 2015		FY 2014		Difference
Sales	\$20 - \$50	\$181,711,070		\$153,570,580		\$28,140,490
Prize Exp.	\$20 - \$50	\$137,265,911		\$115,813,188		\$21,452,723
Sales Cont.	\$20 - \$50	\$44,445,159		\$37,757,392		\$6,687,767
Prize Exp. %	\$20 - \$50	75.5%		75.4%		0.1%
		FY 2015		FY 2014		Difference
Sales	Instant	\$800,467,023		\$779,544,149		\$20,922,874
Prize Exp.	Instant	\$556,484,549		\$536,504,355		\$19,980,194
Sales Cont.	Instant	\$243,982,474		\$243,039,794		\$942,680
Prize Exp. %	Instant	69.5%		68.8%		0.7%

Texas Lottery Commission
Weekly Sales Summary
& Comparison to Previous Week
 Unaudited

	Week Ending 11/29/2014		Week Ending 11/22/2014			
	<u>THIS WEEK</u>	% of Sales	<u>LAST WEEK</u>	% of Sales	<u>\$ change</u>	<u>% change</u>
Total Sales	<u>\$77,774,313</u>		<u>\$83,461,667</u>		<u>-\$5,687,354</u>	-6.81%
Instant Tickets	<u>\$60,471,184</u>	77.8%	<u>\$66,353,583</u>	79.5%	<u>-\$5,882,399</u>	-8.87%
Lotto	\$2,214,747	2.8%	\$2,199,718	2.6%	\$15,029	0.68%
Lotto Extra	\$337,671	0.4%	\$334,361	0.4%	\$3,310	0.99%
Pick 3	\$4,624,896	5.9%	\$4,639,564	5.6%	-\$14,668	-0.32%
Pick 3 Sum It Up	\$88,080	0.1%	\$87,768	0.1%	\$312	0.35%
Cash Five	\$912,039	1.2%	\$933,490	1.1%	-\$21,451	-2.30%
Texas Two Step	\$955,695	1.2%	\$851,281	1.0%	\$104,414	12.27%
Mega Millions	\$2,040,181	2.6%	\$2,013,021	2.4%	\$27,160	1.35%
Megaplier	\$503,117	0.6%	\$503,022	0.6%	\$95	0.02%
Daily 4	\$1,577,411	2.0%	\$1,588,603	1.9%	-\$11,192	-0.70%
Daily 4 Sum It Up	\$90,692	0.1%	\$91,235	0.1%	-\$543	-0.59%
Powerball	\$2,632,388	3.4%	\$2,470,536	3.0%	\$161,852	6.55%
Power Play	\$362,091	0.5%	\$341,955	0.4%	\$20,136	5.89%
All or Nothing	\$681,192	0.9%	\$728,436	0.9%	-\$47,244	-6.49%
Monopoly	\$282,930	0.4%	\$325,095	0.0%	-\$42,165	-12.97%
Total Draw Game Sales	<u>\$17,303,129</u>		<u>\$17,108,084</u>		<u>\$195,045</u>	1.14%

* Totals may not sum due to rounding.

Texas Lottery Commission
Weekly Sales Summary
Unaudited

INSTANT TICKETS
TOP TEN SELLING GAMES

For the Week Ending: 11/29/14

Rank	Price Point	Game	Sales (Millions)
1	\$ 20	HOLIDAY GAME BOOK	\$ 4.756
2	\$ 10	HOLIDAY MAGIC	\$ 3.466
3	\$ 5	HOLIDAY GOLD	\$ 2.882
4	\$ 5	EXTREME 8S	\$ 2.351
5	\$ 10	\$200,000,000 CASH BLOWOUT	\$ 2.207
6	\$ 3	BONUS CASHWORD	\$ 2.101
7	\$ 50	MILLIONNAIRE'S CLUB	\$ 2.091
8	\$ 5	\$100,000 MERRY MONEY	\$ 1.978
9	\$ 20	100X THE CASH	\$ 1.970
10	\$ 3	LOTERIA	\$ 1.952

Texas Lottery Commission
Prize Payout Tracking Report
Unaudited

Through the Week Ending: 11/29/14

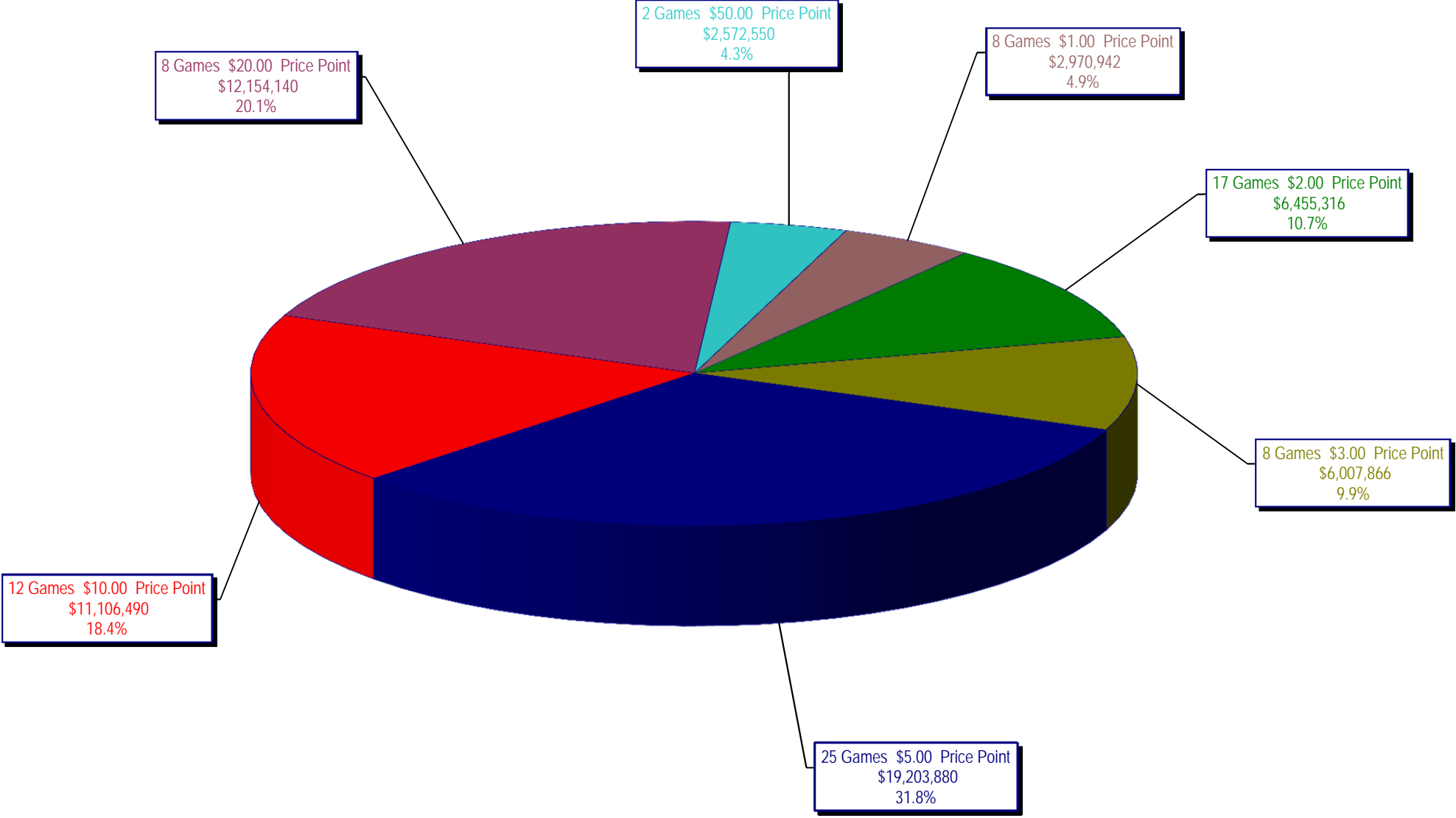
Draw Game Sales

		FY Sales Through Week Ending 11/29/2014		FY Prize Expense Through Week Ending 11/29/2014	Actual* Prize Payout	Base Payout (Prize Pool)
Lotto	\$	29,520,295	\$	14,862,175	50.35%	54.00%
Lotto Extra		4,452,198		2,374,396	53.33%	53.70%
Pick 3		61,037,356		29,138,850	47.74%	50.00%
Pick 3 Sum It Up		1,173,290		525,045	44.75%	50.00%
Cash Five		12,238,738		6,119,445	50.00%	50.00%
Texas Two Step		14,091,384		7,213,891	51.19%	50.00%
Mega Millions		39,970,013		20,433,638	51.12%	50.00%**
Megaplier		9,026,527		4,523,847	50.12%	N/A
Daily 4		20,450,063		9,415,675	46.04%	50.00%
Daily 4 Sum It Up		1,231,357		442,492	35.94%	50.00%
Powerball		43,994,363		22,089,181	50.21%	50.00%**
Power Play		5,709,988		2,867,454	50.22%	N/A
All or Nothing		9,747,402		6,406,874	65.73%	55.98%
Monopoly		2,134,780		3,028,024	141.84%	50.00%
Totals	\$	254,777,752	\$	129,440,987	50.81%	

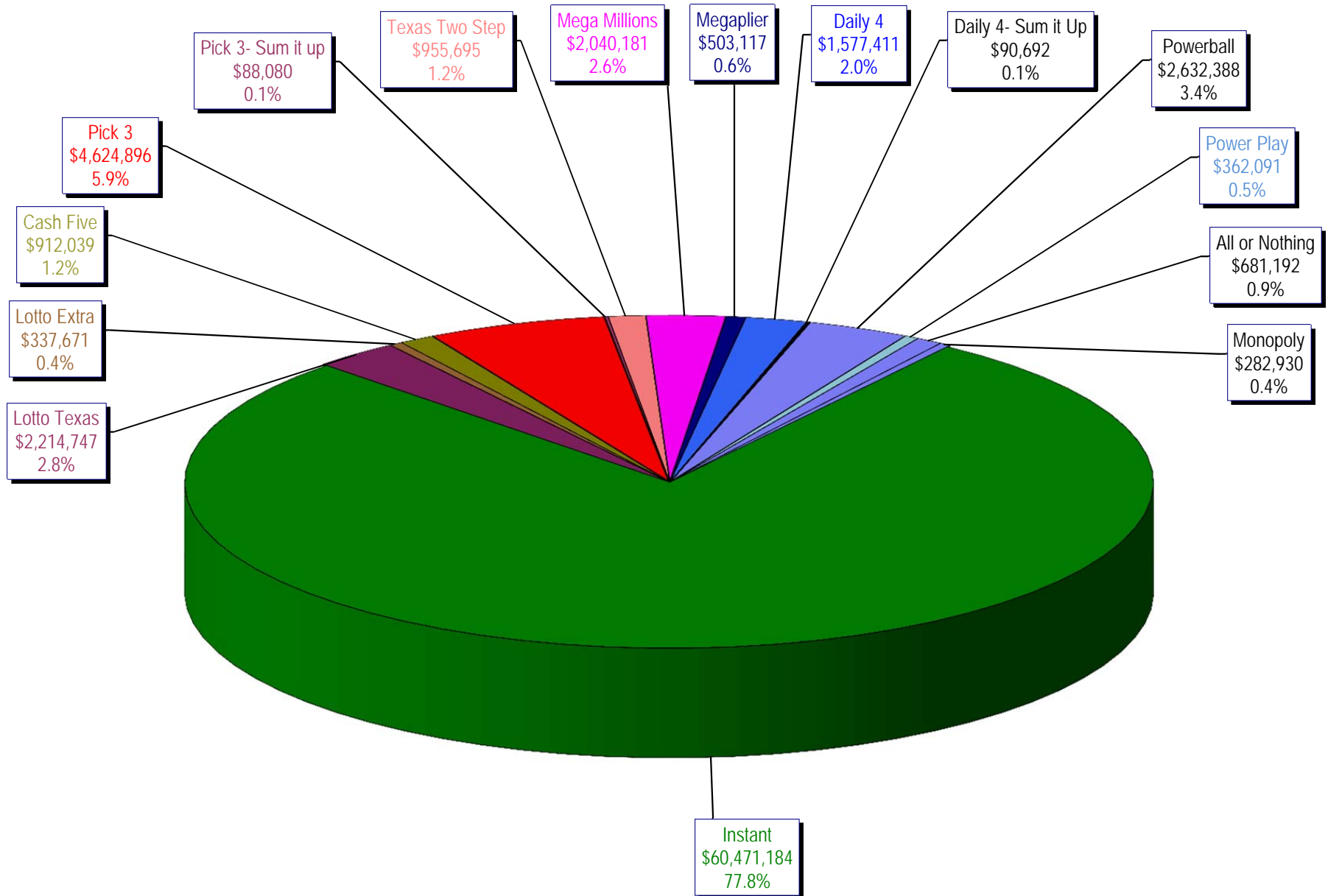
* Before Unclaimed Prizes

** Estimated; depends on # of guaranteed prizes won in Texas

Texas Lottery Commission
Instant Ticket Sales
For the Week Ending 11/29/14
(Unaudited)



Texas Lottery Commission
All Game Sales
For the Week Ending 11/29/14
(Unaudited)



Texas Lottery Commission - Weekly Sales Summary for FY 2015 (Unaudited)

Week Ended	Instant Games	New Games & Dates	Lotto Texas	Jackpot W	S	Lotto Extra	Pick 3	Pick 3 Sum It Up	Cash Five	Texas Two Step	Jackpot M	TH	Mega Millions	Jackpot T	F	Megaplier	Daily 4	Daily 4 Sum It Up	Powerball	Jackpot W	S	Power Play	All or Nothing	Monopoly	Jackpot F	Total	Per Cap.	
9/06/2014*	62,861,604	1589 (\$1.N); 1592 (\$5.N) - 9/1/14	2,281,237	6	6.25	341,232	4,827,600	92,305	958,777	918,635	225	300	1,847,432	25	33	475,313	1,640,023	104,626	3,465,202	100	110	450,723	786,340			81,051,048	3.11	
9/13/2014	61,436,533	0	2,299,834	6.5	6.75	344,225	4,787,666	91,850	960,067	1,214,553	425	575	1,992,737	41	52	501,468	1,571,433	97,036	3,957,407	127	149	497,718	781,088			80,533,614	3.09	
9/20/2014	60,959,234	1647 (\$2.N); 1619 (\$5.N) - 9/15/14	2,307,003	7	7.25	347,119	4,624,949	89,960	952,214	1,582,291	750	925	2,149,120	62	72	528,733	1,536,913	95,355	4,985,548	171	196	597,868	770,822			81,527,128	3.13	
9/27/2014	59,710,056	0	2,357,199	7.5	8.25	353,734	4,540,964	89,289	938,745	1,244,640	1,175	200	2,417,365	83	93	579,889	1,512,957	91,998	4,478,698	225	40	544,723	770,628			79,630,884	3.06	
10/4/2014	62,119,854	0	2,385,322	9	9.5	360,937	4,942,321	94,197	971,047	854,141	200	200	2,966,004	105	120	682,825	1,588,795	98,392	2,443,237	50	60	348,166	786,038			80,651,275	3.09	
10/11/2014	61,253,665	1608 (\$1.N); 1653 (\$5.N); 1651 (\$10.N) - 10/6/14	2,363,624	10.25	11	355,219	4,893,634	94,926	959,659	935,385	225	300	3,310,874	136	150	748,248	1,580,735	94,717	2,522,774	70	80	356,145	769,392			80,238,997	3.08	
10/18/2014	60,230,048	0	2,267,582	11.5	5	343,643	4,664,420	92,081	946,399	842,255	200	225	3,839,669	166	180	841,086	1,522,939	90,307	2,937,145	90	100	398,723	752,154			79,768,450	3.06	
10/25/2014	62,384,112	1655 (\$1.N); 1652 (\$2.N); 1638 (\$10.N); 1637 (\$20.N) - 10/20/14	2,201,043	5.25	5.5	330,460	4,585,640	89,676	933,854	823,726	200	225	4,755,898	200	224	990,074	1,560,894	96,697	3,449,128	110	125	444,897	746,246	467,410	15		83,859,755	3.22
11/1/2014	63,404,713	1648 (\$3.N) - 10/31/14	2,289,864	5.75	6	346,139	4,620,420	87,141	925,312	993,957	300	425	5,950,540	252	284	1,199,010	1,554,893	93,945	3,903,664	142	159	494,803	733,770	375,360	18		86,973,530	3.34
11/8/2014	65,486,719	1600 (\$2.N); 1656 (\$5.N) - 11/3/14	2,269,671	6.25	6.5	345,144	4,823,896	92,098	958,406	1,336,742	550	700	4,908,320	321	15	1,013,337	1,669,728	97,535	4,560,744	178	203	561,387	753,046	358,980	21		89,235,751	3.42
11/15/2014	61,745,521	1649 (\$5.N) - 11/13/14	2,172,758	6.75	7	326,413	4,582,139	86,975	936,682	1,604,425	900	1,100	1,863,118	20	26	471,023	1,587,677	91,661	2,341,252	40	50	329,995	730,482	325,005	15		79,195,125	3.04
11/22/2014	66,353,583	1591 (\$2.N); 1659 (\$5.N); 1650 (\$5.N) - 11/17/14	2,199,718	7.25	7.5	334,361	4,639,564	87,768	933,490	851,281	200	225	2,013,021	35	43	503,022	1,588,603	91,235	2,470,536	60	70	341,955	728,436	325,095	18		83,461,667	3.20
11/29/2014	60,471,184	0	2,214,747	7.75	8.5	337,671	4,624,896	88,080	912,039	955,695	300	400	2,040,181	52	61	503,117	1,577,411	90,692	2,632,388	80	90	362,091	681,192	282,930	21		77,774,313	2.98
weekly change	-8.9%		0.7%			1.0%	-0.3%	0.4%	-2.3%	12.3%			1.3%			0.0%	-0.7%	-0.6%	6.6%			5.9%	-6.5%	-13.0%			-13.0%	
	SALES		SALES			SALES	SALES	SALES	SALES	SALES	SALES	SALES	SALES	SALES	SALES	SALES	SALES	SALES	SALES	SALES	SALES	SALES	SALES	SALES	SALES	SALES	SALES	% of Sales
Calendar Year to date	3,020,569,299		120,779,808			17,485,761	231,746,641	4,559,868	47,037,619	52,325,929			135,486,047			31,404,093	76,232,233	4,683,538	168,328,479			21,419,925	40,525,199	2,134,780			3,974,719,218	100.0%
Fiscal Year to date 2015	800,467,023		29,520,295			4,452,198	61,037,356	1,173,290	12,238,738	14,091,384			39,970,013			9,026,527	20,450,063	1,231,357	43,994,363			5,709,988	9,747,402	2,134,780			1,055,244,775	100.0%
*Full week includes 1 day from FY14																												