



WEEKLY SALES SUMMARY

Unaudited

[Week Ending: 11/30/2013](#)

Texas Lottery Commission
Fiscal Year to Date Sales Comparison
Unaudited

Through the Week Ending 11/30/2013 (13 Weeks)

Sales by Game	FY 2012 *	FY 2013 **	FY 2014	\$ Change		% Change	
				FY 2014 to FY 2012	FY 2014 to FY 2013	FY 2014 to FY 2012	FY 2014 to FY 2013
Instants	\$ 715,114,366	\$ 752,341,270	\$ 779,544,149	\$ 64,429,783	\$ 27,202,879	9.0%	3.6%
Lotto Texas	45,681,645	40,901,754	33,290,690	-12,390,955	-7,611,064	-27.1%	-18.6%
Lotto Extra	-	-	4,224,038	4,224,038	4,224,038	-	-
Pick 3	67,730,675	66,810,346	62,621,371	-5,109,304	-4,188,975	-7.5%	-6.3%
Pick 3 Sum It Up	1,376,037	1,255,865	1,236,995	-139,042	-18,870	-10.1%	-1.5%
Cash Five	16,497,657	14,338,767	13,102,547	-3,395,110	-1,236,220	-20.6%	-8.6%
Texas Two Step	15,975,955	13,131,205	13,831,226	-2,144,729	700,021	-13.4%	5.3%
Mega Millions	35,400,406	27,642,783	36,956,867	1,556,461	9,314,084	4.4%	33.7%
Megaplier	8,094,572	6,388,991	8,160,270	65,698	1,771,279	0.8%	27.7%
Daily 4	15,880,292	17,498,404	20,687,771	4,807,480	3,189,368	30.3%	18.2%
Daily 4 Sum It Up	1,192,626	1,185,804	1,274,446	81,820	88,642	6.9%	7.5%
Powerball	33,267,624	92,415,597	60,013,769	26,746,145	-32,401,828	80.4%	-35.1%
Power Play	7,221,150	8,661,649	6,922,978	-298,172	-1,738,671	-4.1%	-20.1%
All or Nothing	-	24,856,935	11,872,624	11,872,624	-12,984,311	-	-52.2%
Total	\$ 963,433,004	\$ 1,067,429,369	\$ 1,053,739,740	\$ 90,306,737	\$ -13,689,629	9.4%	-1.3%

* 3 extra days

** 1 extra day

Texas Lottery Commission
 Fiscal Year to Date Cumulative Average Sales Comparison
 Unaudited

Through the Week Ending 11/30/2013 (13 Weeks)

Sales by Game	FY 2012	FY 2013	FY 2014
Instant	\$ 7,607,600	\$ 8,177,623	\$ 8,566,419
Lotto Texas	485,975	444,584	365,832
Lotto Extra	-	-	46,418
Pick 3	720,539	726,199	688,147
Pick 3 Sum It Up	14,639	13,651	13,593
Cash Five	175,507	155,856	143,984
Texas Two Step	169,957	142,730	151,991
Mega Millions	376,600	300,465	406,119
Megaplier	86,112	69,446	89,673
Daily 4	168,939	190,200	227,338
Daily 4 Sum It Up	12,688	12,889	14,005
Powerball	353,911	1,004,517	659,492
Power Play	76,821	94,148	76,077
All or Nothing	- *	295,916	130,468
Total	\$ <u>10,249,287</u>	\$ <u>11,628,225</u>	\$ <u>11,579,558</u>

thru 12/3/2011
94 days

thru 12/01/2012
92 days
*
84 days

thru 11/30/2013
91 days

Texas Lottery Commission
Fiscal Year Over Year Change in Sales
Unaudited
FY 2014 Compared to FY 2013

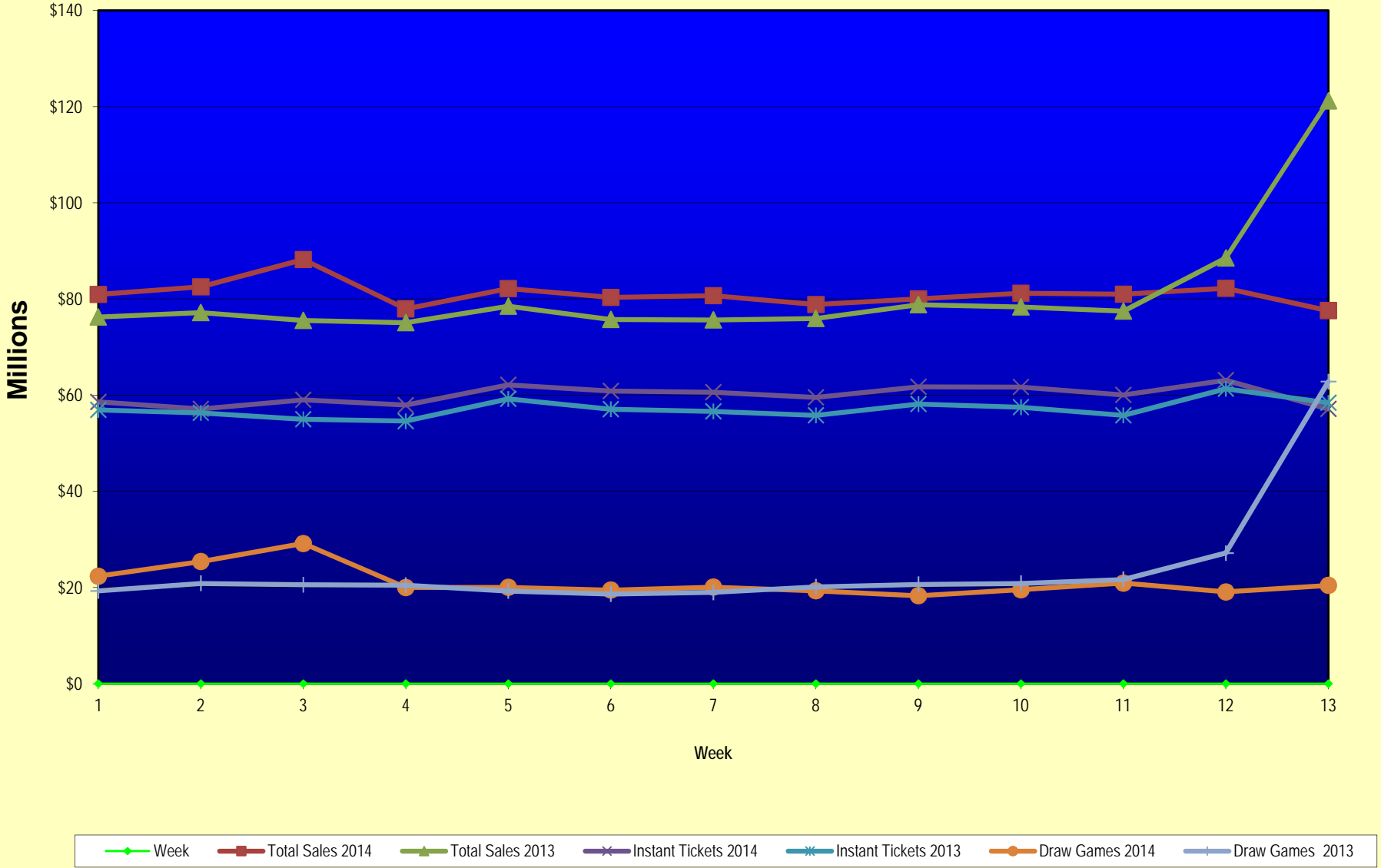
			INSTANT TICKETS				DRAW GAMES				TOTAL SALES			
FY 2014			FY 2014	FY 2013	Difference	% change - Cumulative Sales	FY 2014	FY 2013	Difference	% change - Cumulative Sales	FY 2014	FY 2013	Difference	% change - Cumulative Sales
Week	Week Ending													
0	9/1/2013 *		\$0	\$9,611,328	(\$9,611,328)	-100.0%	\$0	\$3,712,535	(\$3,712,535)	-100.0%	\$0	\$13,323,863	(\$13,323,863)	-100.0%
1	9/7/2013		\$58,587,757	\$56,941,761	\$1,645,996	2.9%	\$22,369,499	\$19,305,417	\$3,064,082	15.9%	\$80,957,256	\$76,247,178	\$4,710,078	6.2%
2	9/14/2013		\$57,135,931	\$56,302,875	\$833,056	1.5%	\$25,412,980	\$20,857,230	\$4,555,750	21.8%	\$82,548,911	\$77,160,105	\$5,388,806	7.0%
3	9/21/2013		\$59,018,194	\$54,974,438	\$4,043,756	7.4%	\$29,161,241	\$20,570,277	\$8,590,964	41.8%	\$88,179,435	\$75,544,715	\$12,634,720	16.7%
4	9/28/2013		\$57,927,984	\$54,606,674	\$3,321,310	6.1%	\$20,012,313	\$20,462,690	(\$450,378)	-2.2%	\$77,940,297	\$75,069,364	\$2,870,933	3.8%
5	10/5/2013		\$62,146,816	\$59,223,327	\$2,923,489	4.9%	\$20,043,557	\$19,279,973	\$763,584	4.0%	\$82,190,373	\$78,503,300	\$3,687,073	4.7%
6	10/12/2013		\$60,867,582	\$57,075,606	\$3,791,976	6.6%	\$19,480,962	\$18,638,467	\$842,496	4.5%	\$80,348,544	\$75,714,073	\$4,634,472	6.1%
7	10/19/2013		\$60,612,193	\$56,630,134	\$3,982,059	7.0%	\$20,079,610	\$18,998,943	\$1,080,668	5.7%	\$80,691,803	\$75,629,077	\$5,062,727	6.7%
8	10/26/2013		\$59,548,277	\$55,789,743	\$3,758,534	6.7%	\$19,319,928	\$20,130,190	(\$810,262)	-4.0%	\$78,868,205	\$75,919,933	\$2,948,273	3.9%
9	11/2/2013		\$61,710,236	\$58,142,777	\$3,567,459	6.1%	\$18,308,976	\$20,638,008	(\$2,329,032)	-11.3%	\$80,019,212	\$78,780,785	\$1,238,427	1.6%
10	11/9/2013		\$61,668,594	\$57,484,804	\$4,183,790	7.3%	\$19,555,070	\$20,862,872	(\$1,307,802)	-6.3%	\$81,223,664	\$78,347,676	\$2,875,988	3.7%
11	11/16/2013		\$60,057,025	\$55,805,228	\$4,251,797	7.6%	\$20,930,071	\$21,660,705	(\$730,634)	-3.4%	\$80,987,096	\$77,465,933	\$3,521,163	4.5%
12	11/23/2013		\$63,118,266	\$61,331,977	\$1,786,289	2.9%	\$19,086,770	\$27,172,853	(\$8,086,083)	-29.8%	\$82,205,036	\$88,504,830	(\$6,299,794)	-7.1%
13	11/30/2013		\$57,145,294	\$58,420,598	(\$1,275,304)	-2.2%	\$20,434,618	\$62,797,943	(\$42,363,326)	-67.5%	\$77,579,912	\$121,218,541	(\$43,638,630)	-36.0%
14	12/7/2013			\$62,489,745				\$19,630,155				\$82,119,900		
15	12/14/2013			\$59,661,880				\$20,064,982				\$79,726,862		
16	12/21/2013			\$63,556,886				\$19,084,653				\$82,641,539		
17	12/28/2013			\$63,547,886				\$17,359,874				\$80,907,760		
18	1/4/2014			\$60,452,721				\$18,833,047				\$79,285,768		
19	1/11/2014			\$58,862,997				\$18,879,167				\$77,742,164		
20	1/18/2014			\$58,494,057				\$19,258,004				\$77,752,061		
21	1/25/2014			\$57,871,744				\$20,093,215				\$77,964,959		
22	2/1/2014			\$61,846,715				\$21,032,335				\$82,879,050		
23	2/8/2014			\$70,374,906				\$21,183,638				\$91,558,544		
24	2/15/2014			\$71,002,438				\$19,295,197				\$90,297,635		
25	2/22/2014			\$71,203,934				\$19,729,989				\$90,933,923		
26	3/1/2014			\$74,551,567				\$20,278,327				\$94,829,894		
27	3/8/2014			\$75,360,138				\$21,447,763				\$96,807,901		
28	3/15/2014			\$70,065,528				\$22,055,563				\$92,121,091		
29	3/22/2014			\$70,137,284				\$28,709,024				\$98,846,308		
30	3/29/2014			\$68,758,522				\$18,597,091				\$87,355,613		
31	4/5/2014			\$73,270,054				\$20,048,992				\$93,319,046		
32	4/12/2014			\$64,738,900				\$19,697,793				\$84,436,693		
33	4/19/2014			\$63,252,072				\$20,245,083				\$83,497,155		
34	4/26/2014			\$62,766,647				\$21,162,888				\$83,929,535		
35	5/3/2014			\$66,251,082				\$23,628,101				\$89,879,183		
36	5/10/2014			\$65,748,723				\$26,735,480				\$92,484,203		
37	5/17/2014			\$63,348,463				\$61,124,604				\$124,473,067		
38	5/24/2014			\$60,537,133				\$18,730,138				\$79,267,271		
39	5/31/2014			\$58,547,555				\$18,317,891				\$76,865,446		
40	6/7/2014			\$62,113,508				\$18,374,935				\$80,488,443		

Texas Lottery Commission
Fiscal Year Over Year Change in Sales
Unaudited
FY 2014 Compared to FY 2013

			INSTANT TICKETS				DRAW GAMES				TOTAL SALES			
FY 2014			FY 2014	FY 2013	Difference	% change - Cumulative Sales	FY 2014	FY 2013	Difference	% change - Cumulative Sales	FY 2014	FY 2013	Difference	% change - Cumulative Sales
Week	Week	Ending												
41	6/14/2014			\$58,988,468				\$18,101,981				\$77,090,449		
42	6/21/2014			\$61,199,484				\$18,675,967				\$79,875,451		
43	6/28/2014			\$59,435,096				\$18,026,964				\$77,462,060		
44	7/5/2014			\$63,457,072				\$18,556,140				\$82,013,212		
45	7/12/2014			\$60,046,267				\$17,669,864				\$77,716,131		
46	7/19/2014			\$61,952,164				\$19,002,142				\$80,954,306		
47	7/26/2014			\$58,251,955				\$20,309,411				\$78,561,366		
48	8/2/2014			\$63,652,675				\$25,295,830				\$88,948,505		
49	8/9/2014			\$56,800,305				\$33,349,261				\$90,149,566		
50	8/16/2014			\$55,607,891				\$17,625,289				\$73,233,180		
51	8/23/2014			\$55,988,956				\$18,099,850				\$74,088,806		
52	8/30/2014			\$56,059,026				\$20,294,026				\$76,353,052		
Total thru Current Week			\$779,544,149	\$752,341,270	\$27,202,879	3.6%	\$274,195,591	\$315,088,099	(\$40,892,508)	-13.0%	\$1,053,739,740	\$1,067,429,369	(\$13,689,629)	-1.3%
Fiscal Year Total			\$779,544,149	\$3,222,593,714			\$274,195,591	\$1,153,692,742			\$1,053,739,740	\$4,376,286,456		

* FY 13 includes 1 day

Texas Lottery Commission Fiscal Year Over Year Change in Sales



Note: Week 1 is not a full week of sales as this report is prepared on a Fiscal Year basis.

Texas Lottery Commission
Instant Tickets by Price Point
Sales, Prize Expense, Sales Contribution and Payout Percentage With Year Over Year Changes
Unaudited

Fiscal Year	Price Point	# of Active Games	FY Sales	% of Instant Ticket Sales	Year over Year Change in Sales	FY Prize Expense	Year over Year Change in Prize Expense	FY Sales Contribution	Year over Year Change in Contribution	Average Prize Payout %	Year over Year Change in Payout %
2013	\$1.00	24	44,747,572	5.9%		27,364,205		17,383,367		61.2%	0.9%
thru	\$2.00	26	96,238,744	12.8%		62,569,027		33,669,717		65.0%	-0.1%
12/1/2012	\$3.00	14	98,290,005	13.1%		64,467,989		33,822,016		65.6%	0.1%
	\$5.00	40	227,698,760	30.3%		154,586,044		73,112,716		67.9%	-0.2%
	\$7.00	2	13,027,469	1.7%		8,854,331		4,173,138		68.0%	0.0%
	\$10.00	11	127,407,620	16.9%		90,019,270		37,388,350		70.7%	-0.3%
	\$20.00	7	113,461,400	15.1%		84,930,210		28,531,190		74.9%	0.1%
	\$50.00	3	31,469,700	4.2%		24,433,996		7,035,704		77.6%	0.0%
Total		127	\$752,341,270			\$517,225,071		\$235,116,199		68.7%	0.2%
2014	\$1.00	21	44,994,209	5.8%		26,966,385		18,027,824		59.9%	-1.3%
thru	\$2.00	27	93,100,798	11.9%		60,452,850		32,647,948		64.9%	-0.1%
11/30/2013	\$3.00	14	84,788,097	10.9%		55,501,758		29,286,339		65.5%	-0.1%
	\$5.00	36	256,180,365	32.9%		174,032,565		82,147,800		67.9%	-0.1%
	\$7.00	0	0	0.0%		0		-		0.0%	0.0%
	\$10.00	12	146,910,100	18.8%		103,737,609		43,172,491		70.6%	-0.6%
	\$20.00	8	123,983,080	15.9%		92,842,955		31,140,125		74.9%	0.0%
	\$50.00	2	29,587,500	3.8%		22,970,233		6,617,267		77.6%	0.0%
Total		120	\$779,544,149			\$536,504,355		\$243,039,794		68.8%	-0.2%
Variance	\$1.00	-3	246,637		0.6%	-397,820	-1.5%	644,457	3.7%	-1.22%	
2014 to	\$2.00	1	-3,137,946		-3.3%	-2,116,177	-3.4%	-1,021,769	-3.0%	-0.08%	
2013	\$3.00	0	-13,501,908		-13.7%	-8,966,231	-13.9%	-4,535,677	-13.4%	-0.13%	
	\$5.00	-4	28,481,605		12.5%	19,446,521	12.6%	9,035,084	12.4%	0.04%	
	\$7.00	-2	-13,027,469		-100.0%	-8,854,331	-100.0%	-4,173,138	-100.0%	-67.97%	
	\$10.00	1	19,502,480		15.3%	13,718,340	15.2%	5,784,140	15.5%	-0.04%	
	\$20.00	1	10,521,680		9.3%	7,912,745	9.3%	2,608,935	9.1%	0.03%	
	\$50.00	-1	-1,882,200		-6.0%	-1,463,763	-6.0%	-418,437	-5.9%	-0.01%	
Total		-7	\$27,202,879		3.6%	\$19,279,283	3.7%	\$7,923,596	3.4%	0.10%	

Notes - Instant Ticket Variances

Texas Lottery Commission
Instant Tickets by Price Point
Sales, Prize Expense, Sales Contribution and Payout Percentage With Year Over Year Changes
 Unaudited

			FY 2014		FY 2013	Difference
Sales	\$1 - \$7	1	\$479,063,469		\$480,002,550	-\$939,081
Prize Exp.	\$1 - \$7	1	\$316,953,557		\$317,841,596	-\$888,038
Sales Cont.	\$1 - \$7	1	\$162,109,912		\$162,160,954	-\$51,043
Prize Exp. %	\$1 - \$7	1	66.2%		66.2%	-0.1%
			FY 2014		FY 2013	Difference
Sales	\$10 - \$50	2	\$300,480,680		\$272,338,720	\$28,141,960
Prize Exp.	\$10 - \$50	2	\$219,550,797		\$199,383,476	\$20,167,322
Sales Cont.	\$10 - \$50	1	\$80,929,883		\$72,955,244	\$7,974,638
Prize Exp. %	\$10 - \$50	2	73.1%		73.2%	-0.1%
			FY 2014		FY 2013	Difference
Sales	Instant		\$779,544,149		\$752,341,270	\$27,202,879
Prize Exp.	Instant		\$536,504,355		\$517,225,071	\$19,279,283
Sales Cont.	Instant		\$243,039,794		\$235,116,199	\$7,923,596
Prize Exp. %	Instant		68.8%		68.7%	0.1%

			FY 2014		FY 2013	Difference
Sales	\$1 - \$10		\$625,973,569		\$607,410,170	\$18,563,399
Prize Exp.	\$1 - \$10		\$420,691,167		\$407,860,865	\$12,830,301
Sales Cont.	\$1 - \$10		\$205,282,402		\$199,549,305	\$5,733,098
Prize Exp. %	\$1 - \$10		67.2%		67.1%	0.1%
			FY 2014		FY 2013	Difference
Sales	\$20 - \$50		\$153,570,580		\$144,931,100	\$8,639,480
Prize Exp.	\$20 - \$50		\$115,813,188		\$109,364,206	\$6,448,982
Sales Cont.	\$20 - \$50		\$37,757,392		\$35,566,894	\$2,190,498
Prize Exp. %	\$20 - \$50		75.4%		75.5%	0.0%
			FY 2014		FY 2013	Difference
Sales	Instant		\$779,544,149		\$752,341,270	\$27,202,879
Prize Exp.	Instant		\$536,504,355		\$517,225,071	\$19,279,283
Sales Cont.	Instant		\$243,039,794		\$235,116,199	\$7,923,596
Prize Exp. %	Instant		68.8%		68.7%	0.1%

Texas Lottery Commission
Weekly Sales Summary
& Comparison to Previous Week
 Unaudited

	Week Ending 11/30/2013	% of Sales	Week Ending 11/23/2013	% of Sales	\$ change	% change
	<u>THIS WEEK</u>		<u>LAST WEEK</u>			
Total Sales	<u>\$77,579,912</u>		<u>\$82,205,036</u>		<u>-\$4,625,125</u>	-5.63%
Instant Tickets	<u>\$57,145,294</u>	73.7%	<u>\$63,118,266</u>	76.8%	<u>-\$5,972,972</u>	-9.46%
Lotto	\$2,347,756	3.0%	\$2,325,678	2.8%	\$22,078	0.95%
Lotto Extra	\$316,771	0.4%	\$307,020	0.4%	\$9,751	3.18%
Pick 3	\$4,679,492	6.0%	\$4,702,460	5.7%	-\$22,968	-0.49%
Pick 3 Sum It Up	\$88,857	0.1%	\$91,204	0.1%	-\$2,348	-2.57%
Cash Five	\$973,403	1.3%	\$1,007,524	1.2%	-\$34,121	-3.39%
Texas Two Step	\$776,086	1.0%	\$839,877	1.0%	-\$63,791	-7.60%
Mega Millions	\$4,569,734	5.9%	\$3,473,057	4.2%	\$1,096,677	31.58%
Megaplier	\$1,000,837	1.3%	\$764,548	0.9%	\$236,289	30.91%
Daily 4	\$1,608,510	2.1%	\$1,628,437	2.0%	-\$19,928	-1.22%
Daily 4 Sum It Up	\$94,189	0.1%	\$98,799	0.1%	-\$4,611	-4.67%
Powerball	\$2,810,754	3.6%	\$2,637,760	3.2%	\$172,994	6.56%
Power Play	\$382,022	0.5%	\$349,338	0.4%	\$32,684	9.36%
All or Nothing	\$786,208	1.0%	\$861,068	1.0%	-\$74,860	-8.69%
Total Draw Game Sales	<u>\$20,434,618</u>		<u>\$19,086,770</u>		<u>\$1,347,848</u>	7.06%

* Totals may not sum due to rounding.

Texas Lottery Commission
Weekly Sales Summary
Unaudited

INSTANT TICKETS
TOP TEN SELLING GAMES

For the Week Ending: 11/30/13

Rank	Price Point	Game	Sales (Millions)
1	\$ 5	MERRY MONEY	\$ 3.327
2	\$ 10	BIG WINNING NUMBERS	\$ 3.150
3	\$ 20	HOLIDAY MILLIONS	\$ 3.108
4	\$ 10	GIFTS GALORE	\$ 2.966
5	\$ 10	SUPER WEEKLY GRAND	\$ 2.312
6	\$ 5	TRIM THE TREE	\$ 2.110
7	\$ 5	CASH MACHINE	\$ 1.905
8	\$ 5	BONUS WEEKLY GRAND	\$ 1.871
9	\$ 20	\$1,000,000 JACKPOT	\$ 1.761
10	\$ 5	\$75,000 CASHWORD-O-RAMA	\$ 1.711

Texas Lottery Commission
Prize Payout Tracking Report
Unaudited

Through the Week Ending 11/30/13

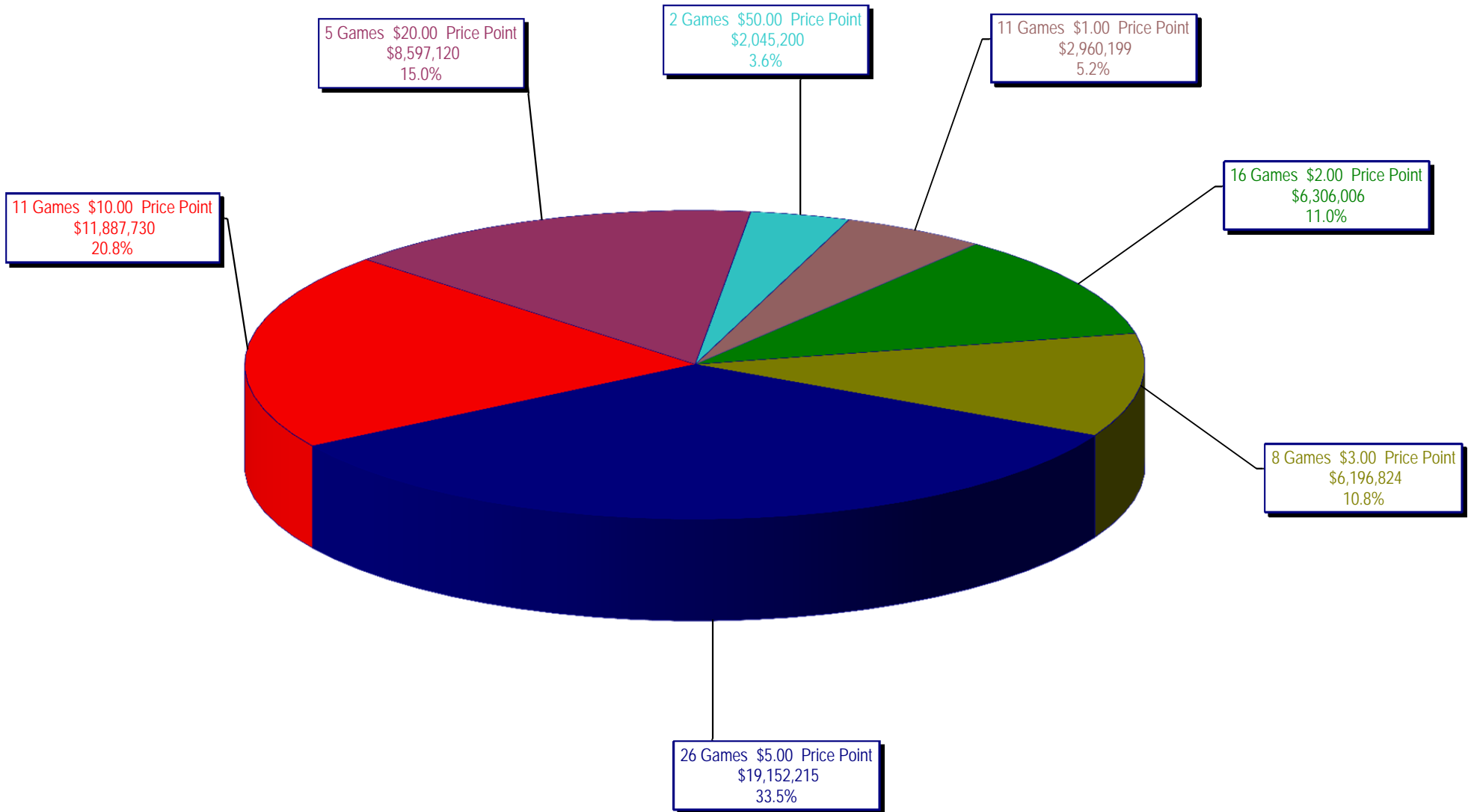
Draw Game Sales

		FY Sales Through Week Ending 11/30/2013		FY Prize Expense Through Week Ending 11/30/2013	Actual* Prize Payout	Base Payout (Prize Pool)
Lotto	\$	33,290,690	\$	17,815,379	53.51%	54.00%
Lotto Extra		4,224,038		2,243,272	53.11%	53.70%
Pick 3		62,621,371		31,174,160	49.78%	50.00%
Pick 3 Sum It Up		1,236,995		559,526	45.23%	50.00%
Cash Five		13,102,547		6,551,330	50.00%	50.00%
Texas Two Step		13,831,226		7,196,889	52.03%	50.00%
Mega Millions		36,956,867		18,802,100	50.88%	50.00%**
Megaplier		8,160,270		5,096,684	62.46%	N/A
Daily 4		20,687,771		11,717,775	56.64%	50.00%
Daily 4 Sum It Up		1,274,446		1,064,179	83.50%	50.00%
Powerball		60,013,769		28,782,015	47.96%	50.00%**
Power Play		6,922,978		2,473,498	35.73%	N/A
All or Nothing		11,872,624		6,157,892	51.87%	55.98%
Totals	\$	274,195,591	\$	139,634,699	50.93%	

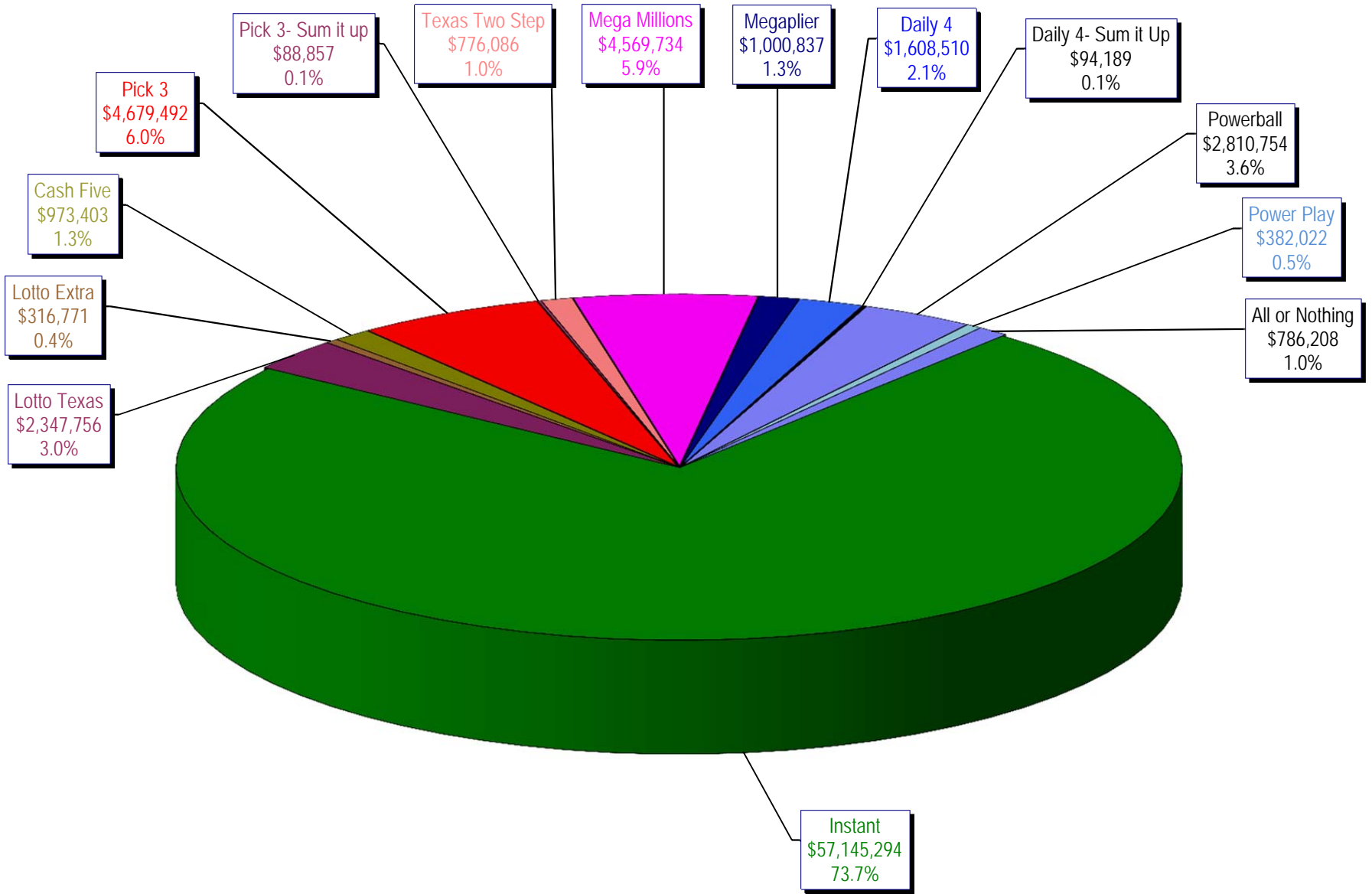
* Before Unclaimed Prizes

** Estimated; depends on # of guaranteed prizes won in Texas

Texas Lottery Commission
Instant Ticket Sales
For the Week Ending 11/30/13
(Unaudited)



Texas Lottery Commission
All Game Sales
For the Week Ending 11/30/13
(Unaudited)



Texas Lottery Commission - Weekly Sales Summary for FY 2014 (Unaudited)

Week Ended	Instant Games	New Games & Dates	Lotto Texas	Jackpot		Lotto Extra	Pick 3	Pick 3 Sum It Up	Cash Five	Texas Two Step	Jackpot		Mega Millions	Jackpot		Daily 4	Daily 4 Sum It Up	Powerball	Jackpot		Power Play	All or Nothing	Total	Per Cap.	
				W	S						M	TH		T	F				W	S					
9/7/2013	58,587,757	0	2,677,829	8	9	329,933	4,945,500	89,456	1,036,149	1,417,992	600	775	2,409,195	85	95	540,148	1,453,721	84,220	5,730,736	169	203	650,070	1,004,550	80,957,256	3.11
9/14/2013	57,135,931	1554 (\$1.N); 1555 (\$2.N); 1556 (\$5.N); 1557 (\$10.N) - 09/09/13	2,667,851	9.75	10.75	331,113	4,795,787	98,347	1,011,617	1,209,874	1	200	2,942,905	106	119	623,938	1,431,261	87,188	8,313,548	245	317	861,842	1,037,710	82,548,911	3.17
9/21/2013	59,018,194	0	2,793,973	11.50	12.50	346,650	4,806,820	94,670	1,008,752	908,904	225	300	3,395,333	130	145	704,431	1,513,941	92,441	11,449,786	400	40	1,072,426	973,114	88,179,435	3.38
9/28/2013	57,927,984	1558 (\$2.N); 1523 (\$5.N) - 09/23/13	2,653,111	13.25	14	329,426	4,679,375	95,344	994,775	852,100	200	225	3,688,920	160	173	744,933	1,523,950	94,444	3,041,612	50	60	392,576	921,748	77,940,297	2.99
10/5/2013	62,146,816	0	2,758,867	15	15.75	341,320	5,022,201	105,398	1,038,159	842,921	200	200	2,878,147	189	12	615,856	1,694,849	108,583	3,263,494	70	86	416,767	956,996	82,190,373	3.15
10/12/2013	60,867,582	1560 (\$1.N); 1561 (\$5.N); 1562 (\$20.N) - 10/7/13	2,820,574	16.5	17.75	348,512	4,834,261	97,324	1,011,724	926,156	225	300	1,819,995	14	22	440,456	1,607,225	100,756	4,066,595	108	133	489,491	917,894	80,348,544	3.08
10/19/2013	60,612,193	0	2,709,127	18.5	19.5	339,742	4,805,913	93,251	998,546	1,120,862	425	575	1,852,326	29	37	442,957	1,595,838	97,700	4,606,577	156	186	533,660	883,112	80,691,803	3.10
10/26/2013	59,548,277	1563 (\$2.N); 1564 (\$5.N); 1571 (\$10.N) - 10/21/13	2,318,924	5	5.25	297,319	4,702,074	92,890	991,912	830,330	200	225	2,138,960	55	65	514,665	1,635,640	102,731	4,306,600	216	40	503,870	884,014	78,868,205	3.03
11/2/2013	61,710,236	0	2,370,679	5.5	5.75	307,933	4,842,493	96,454	1,006,508	1,034,914	300	425	2,200,241	75	87	518,514	1,660,955	106,051	2,890,169	50	60	385,390	888,676	80,019,212	3.07
11/9/2013	61,668,594	1572 (\$1.N); 1565 (\$2.N); 1524 (\$3.N); 1568 (\$5.N) - 11/4/13	2,396,719	6	6.25	311,322	4,959,973	98,589	1,019,624	1,380,347	550	750	2,599,262	99	115	596,031	1,673,137	105,122	3,109,692	70	87	407,994	897,258	81,223,664	3.12
11/16/2013	60,057,025	0	2,449,602	5	5.25	316,977	4,845,025	95,215	1,003,854	1,690,863	925	1,150	2,988,792	132	149	652,956	1,660,309	102,225	3,786,446	110	130	477,532	860,276	80,987,096	3.11
11/23/2013	63,118,266	1570 (\$5.N); 1534 (\$10.N) - 11/18/13	2,325,678	5.5	5.75	307,020	4,702,460	91,204	1,007,524	839,877	200	200	3,473,057	165	181	764,548	1,628,437	98,799	2,637,760	40	50	349,338	861,068	82,205,036	3.15
11/30/2013	57,145,294	0	2,347,756	6	6.25	316,771	4,679,492	88,857	973,403	776,086	200	225	4,569,734	205	230	1,000,837	1,608,510	94,189	2,810,754	60	70	382,022	786,208	77,579,912	2.98
weekly change	-9.5%		0.9%				-0.5%	-2.6%	-3.4%	-7.6%			31.6%			30.9%	-1.2%	-4.7%	6.6%		9.4%	-8.7%	-5.6%		
	SALES		SALES			SALES	SALES	SALES	SALES	SALES			SALES		SALES	SALES	SALES	SALES		SALES		SALES	% of Sales		
Calendar Year to date	2,983,543,412		126,567,432			10,683,943	243,154,921	4,637,023	50,247,283	54,244,336			113,479,059		25,637,236	72,431,934	4,534,932	255,326,939		28,005,047		44,053,197	4,016,546,693	100.0%	
Fiscal Year to date 2014	779,544,149		33,290,690			4,224,038	62,621,371	1,236,995	13,102,547	13,831,226			36,956,867		8,160,270	20,687,771	1,274,446	60,013,769		6,922,978		11,872,624	1,053,739,740	100.0%	