



WEEKLY SALES SUMMARY

Unaudited

[Week Ending: 12/01/2012](#)

Texas Lottery Commission
Fiscal Year to Date Sales Comparison
Unaudited

Through the week ending 12/01/2012 (14 weeks)

Sales by Game	FY 2011 *	FY 2012 **	FY 2013	\$ Change		% Change	
				FY 2013 to FY 2011	FY 2013 to FY 2012	FY 2013 to FY 2011	FY 2013 to FY 2012
Instants	\$ 693,820,295	\$ 715,114,366	\$ 752,341,270	\$ 58,520,975	\$ 37,226,904	8.4%	5.2%
Lotto Texas	44,333,667	45,681,645	40,901,754	-3,431,913	-4,779,891	-7.7%	-10.5%
Pick 3	70,475,272	67,730,675	66,810,346	-3,664,926	-920,329	-5.2%	-1.4%
Pick 3 Sum It Up	1,433,394	1,376,037	1,255,865	-177,529	-120,172	-12.4%	-8.7%
Cash Five	16,623,679	16,497,657	14,338,767	-2,284,912	-2,158,890	-13.7%	-13.1%
Texas Two Step	11,903,612	15,975,955	13,131,205	1,227,593	-2,844,750	10.3%	-17.8%
Mega Millions	33,648,790	35,400,406	27,642,783	-6,006,007	-7,757,623	-17.8%	-21.9%
Megaplier	7,617,191	8,094,572	6,388,991	-1,228,200	-1,705,581	-16.1%	-21.1%
Daily 4	14,562,079	15,880,292	17,498,404	2,936,325	1,618,112	20.2%	10.2%
Daily 4 Sum It Up	1,146,280	1,192,626	1,185,804	39,524	-6,823	3.4%	-0.6%
Powerball	22,692,823	33,267,624	92,415,597	69,722,774	59,147,973	307.2%	177.8%
Power Play	5,419,073	7,221,150	8,661,649	3,242,576	1,440,499	59.8%	19.9%
All or Nothing	-	-	24,856,935	24,856,935	24,856,935	-	-
Total	\$ 923,676,154	\$ 963,433,004	\$ 1,067,429,369	\$ 143,753,215	\$ 103,996,365	15.6%	10.8%

* 3 extra days

** 2 extra days

Texas Lottery Commission
Fiscal Year to Date Cumulative Average Sales Comparison
Unaudited

Through the week ending 12/01/2012 (14 weeks)

Sales by Game	FY 2011	FY 2012	FY 2013
Instants	\$ 7,303,372	\$ 7,607,600	\$ 8,177,623
Lotto Texas	466,670	485,975	444,584
Pick 3	741,845	720,539	726,199
Pick 3 Sum It Up	15,088	14,639	13,651
Cash Five	174,986	175,507	155,856
Texas Two Step	125,301	169,957	142,730
Mega Millions	354,198	376,600	300,465
Megaplier	80,181	86,112	69,446
Daily 4	153,285	168,939	190,200
Daily 4 Sum It Up	12,066	12,688	12,889
Powerball	238,872	353,911	1,004,517
Power Play	57,043	76,821	94,148
All or Nothing	-	-	295,916 *
Total	\$ <u>9,722,907</u>	\$ <u>10,249,287</u>	\$ <u>11,628,225</u>
	thru 12/04/2010 95 days	thru 12/03/2011 94 days	thru 12/01/2012 92 days * 84 days

Texas Lottery Commission
Fiscal Year Over Year Change in Sales
Unaudited
FY 2013 Compared to FY 2012

Week	FY 2013 Week Ending	INSTANT TICKETS				DRAW GAMES				TOTAL SALES			
		FY 2013	FY 2012	Difference	% change - Cumulative Sales	FY 2013	FY 2012	Difference	% change - Cumulative Sales	FY 2013	FY 2012	Difference	% change - Cumulative Sales
1	9/1/2012**	\$9,611,328	\$25,147,181	(\$15,535,853)	-61.8%	\$3,712,535	\$9,704,561	(\$5,992,026)	-61.7%	\$13,323,863	\$34,851,742	(\$21,527,879)	-61.8%
2	9/8/2012	\$56,941,761	\$50,591,068	\$6,350,693	12.6%	\$19,305,417	\$17,681,853	\$1,623,564	9.2%	\$76,247,178	\$68,272,921	\$7,974,257	11.7%
3	9/15/2012	\$56,302,875	\$49,835,063	\$6,467,812	13.0%	\$20,857,230	\$16,842,326	\$4,014,904	23.8%	\$77,160,105	\$66,677,389	\$10,482,716	15.7%
4	9/22/2012	\$54,974,438	\$49,777,138	\$5,197,300	10.4%	\$20,570,277	\$17,504,800	\$3,065,477	17.5%	\$75,544,715	\$67,281,938	\$8,262,777	12.3%
5	9/29/2012	\$54,606,674	\$51,040,274	\$3,566,400	7.0%	\$20,462,690	\$18,653,100	\$1,809,591	9.7%	\$75,069,364	\$69,693,374	\$5,375,991	7.7%
6	10/6/2012	\$59,223,327	\$53,715,157	\$5,508,170	10.3%	\$19,279,973	\$17,225,680	\$2,054,293	11.9%	\$78,503,300	\$70,940,837	\$7,562,463	10.7%
7	10/13/2012	\$57,075,606	\$51,942,121	\$5,133,485	9.9%	\$18,638,467	\$17,854,980	\$783,487	4.4%	\$75,714,073	\$69,797,101	\$5,916,972	8.5%
8	10/20/2012	\$56,630,134	\$52,837,769	\$3,792,365	7.2%	\$18,998,943	\$19,558,519	(\$559,577)	-2.9%	\$75,629,077	\$72,396,288	\$3,232,789	4.5%
9	10/27/2012	\$55,789,743	\$52,206,644	\$3,583,099	6.9%	\$20,130,190	\$21,504,565	(\$1,374,376)	-6.4%	\$75,919,933	\$73,711,209	\$2,208,724	3.0%
10	11/3/2012	\$58,142,777	\$56,265,310	\$1,877,467	3.3%	\$20,638,008	\$20,870,086	(\$232,079)	-1.1%	\$78,780,785	\$77,135,396	\$1,645,389	2.1%
11	11/10/2012	\$57,484,804	\$55,682,645	\$1,802,159	3.2%	\$20,862,872	\$17,862,404	\$3,000,468	16.8%	\$78,347,676	\$73,545,049	\$4,802,627	6.5%
12	11/17/2012	\$55,805,228	\$54,978,079	\$827,149	1.5%	\$21,660,705	\$17,879,985	\$3,780,721	21.1%	\$77,465,933	\$72,858,064	\$4,607,870	6.3%
13	11/24/2012	\$61,331,977	\$53,942,448	\$7,389,529	13.7%	\$27,172,853	\$16,877,145	\$10,295,708	61.0%	\$88,504,830	\$70,819,593	\$17,685,237	25.0%
14	12/1/2012	\$58,420,598	\$57,153,469	\$1,267,129	2.2%	\$62,797,943	\$18,298,636	\$44,499,307	243.2%	\$121,218,541	\$75,452,105	\$45,766,436	60.7%
15	12/8/2012		\$55,318,284				\$19,033,326				\$74,351,610		
16	12/15/2012		\$58,612,629				\$20,045,279				\$78,657,908		
17	12/22/2012		\$60,628,256				\$22,572,986				\$83,201,242		
18	12/29/2012		\$63,065,007				\$19,948,521				\$83,013,528		
19	1/5/2013		\$60,479,896				\$17,331,888				\$77,811,784		
20	1/12/2013		\$57,689,526				\$17,568,732				\$75,258,258		
21	1/19/2013		\$58,704,854				\$19,886,540				\$78,591,394		
22	1/26/2013		\$57,611,325				\$20,641,697				\$78,253,022		
23	2/2/2013		\$65,553,366				\$23,689,855				\$89,243,221		
24	2/9/2013		\$75,070,485				\$28,361,583				\$103,432,068		
25	2/16/2013		\$66,679,947				\$19,588,615				\$86,268,562		
26	2/23/2013		\$64,868,899				\$19,965,388				\$84,834,287		
27	3/2/2013		\$67,135,065				\$20,947,181				\$88,082,246		
28	3/9/2013		\$68,299,006				\$22,152,639				\$90,451,645		
29	3/16/2013		\$65,013,692				\$23,351,718				\$88,365,410		
30	3/23/2013		\$64,035,255				\$27,416,609				\$91,451,864		
31	3/30/2013		\$65,135,991				\$84,628,987				\$149,764,978		
32	4/6/2013		\$66,860,957				\$19,899,400				\$86,760,357		
33	4/13/2013		\$64,028,898				\$20,220,141				\$84,249,039		
34	4/20/2013		\$63,623,892				\$20,974,282				\$84,598,174		
35	4/27/2013		\$61,743,623				\$20,267,388				\$82,011,011		
36	5/4/2013		\$64,851,962				\$20,642,982				\$85,494,944		
37	5/11/2013		\$65,472,556				\$19,140,768				\$84,613,324		
38	5/18/2013		\$60,572,658				\$18,342,814				\$78,915,472		
39	5/25/2013		\$58,959,028				\$18,618,060				\$77,577,088		
40	6/1/2013		\$57,409,086				\$19,014,645				\$76,423,731		
41	6/8/2013		\$59,845,545				\$20,527,958				\$80,373,503		
42	6/15/2013		\$57,021,498				\$19,386,186				\$76,407,684		

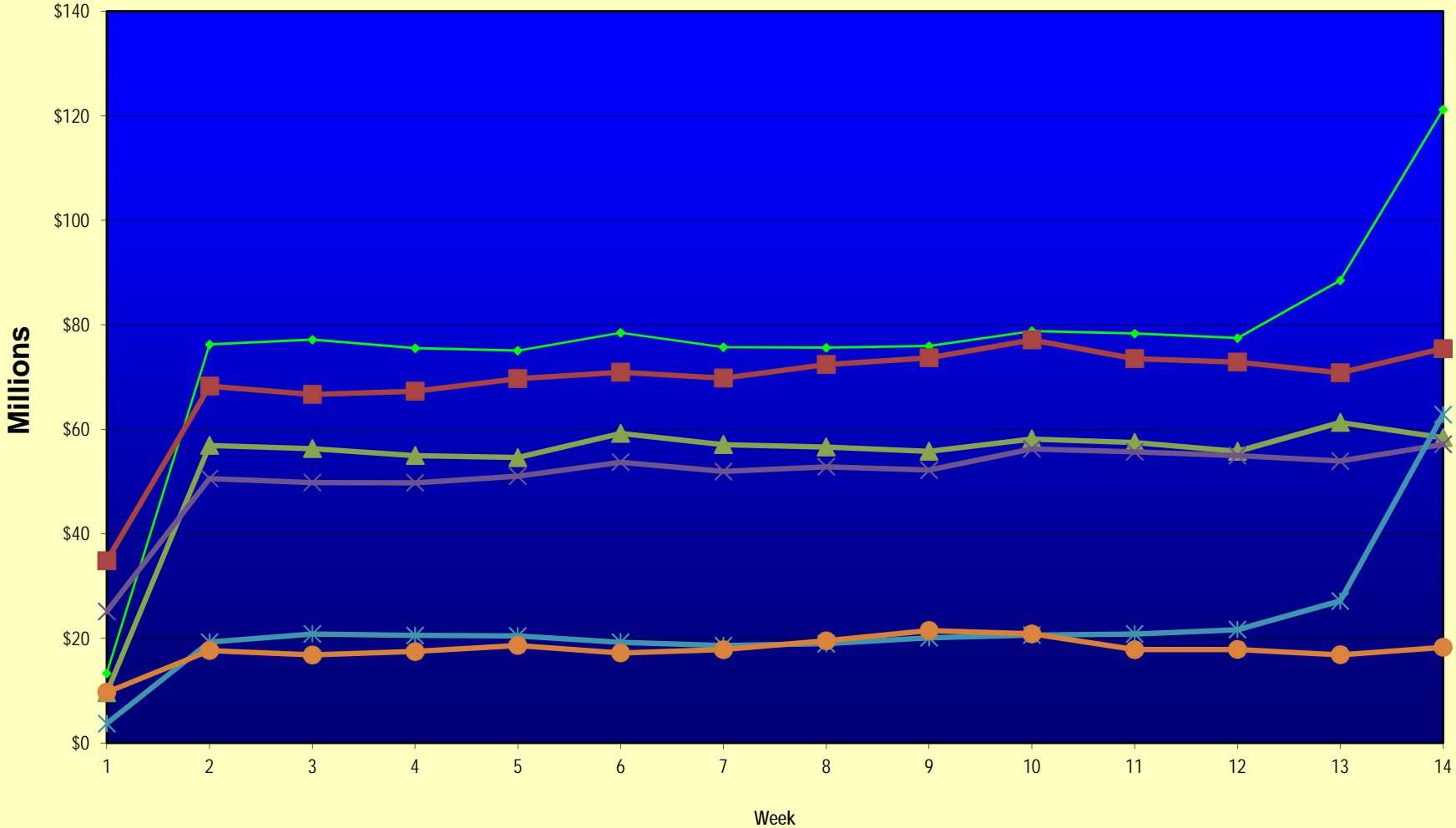
Note: Week 1 is not a full week of sales as this report is prepared on a Fiscal Year basis.

Texas Lottery Commission
Fiscal Year Over Year Change in Sales
Unaudited
FY 2013 Compared to FY 2012

Week	FY 2013 Week Ending	INSTANT TICKETS				DRAW GAMES				TOTAL SALES			
		FY 2013	FY 2012	Difference	% change - Cumulative Sales	FY 2013	FY 2012	Difference	% change - Cumulative Sales	FY 2013	FY 2012	Difference	% change - Cumulative Sales
43	6/22/2013		\$57,892,076				\$17,594,154				\$75,486,230		
44	6/29/2013		\$57,497,435				\$18,153,658				\$75,651,093		
45	7/6/2013		\$60,345,000				\$19,059,152				\$79,404,152		
46	7/13/2013		\$57,683,321				\$18,751,043				\$76,434,364		
47	7/20/2013		\$57,083,343				\$18,769,201				\$75,852,544		
48	7/27/2013		\$54,006,781				\$18,934,103				\$72,940,884		
49	8/3/2013		\$56,557,409				\$20,206,705				\$76,764,114		
50	8/10/2013		\$57,799,452				\$22,832,120				\$80,631,572		
51	8/17/2013		\$54,845,724				\$25,435,624				\$80,281,348		
52	8/24/2013		\$55,661,277				\$17,524,474				\$73,185,751		
	8/31/2013		\$47,363,984				\$14,929,528				\$62,293,512		
Total thru Current Week		\$752,341,270	\$715,114,366	\$37,226,904	5.2%	\$315,088,099	\$248,318,638	\$66,769,461	26.9%	\$1,067,429,369	\$963,433,004	\$103,996,365	10.8%
Fiscal Year Total		\$752,341,270	\$3,086,141,354			\$315,088,099	\$1,104,674,559			\$1,067,429,369	\$4,190,815,913		

** FY 2012 includes 3 days; FY 2013 includes 1 day.

Texas Lottery Commission Fiscal Year Over Year Change in Sales



Note: Week 1 is not a full week of sales as this report is prepared on a Fiscal Year basis.

Texas Lottery Commission
Instant Tickets by Price Point
Sales, Prize Expense, Sales Contribution and Payout Percentage With Year Over Year Changes
Unaudited

Fiscal Year	Price Point	# of Active Games	FY Sales	% of Instant Ticket Sales	Year over Year Change in Sales	FY Prize Expense	Year over Year Change in Prize Expense	FY Sales Contribution	Year over Year Change in Contribution	Average Prize Payout %	Year over Year Change in Payout %
2012	\$1.00	23	51,042,066	7.1%		31,311,995		19,730,071		61.3%	1.0%
thru	\$2.00	25	99,473,808	13.9%		64,688,119		34,785,689		65.0%	-0.8%
12/3/2011	\$3.00	14	89,281,758	12.5%		58,596,230		30,685,528		65.6%	0.1%
	\$5.00	31	220,858,565	30.9%		150,154,759		70,703,806		68.0%	0.1%
	\$7.00	4	16,643,039	2.3%		11,317,110		5,325,929		68.0%	0.0%
	\$10.00	13	117,403,830	16.4%		82,712,220		34,691,610		70.5%	-0.8%
	\$20.00	5	100,596,600	14.1%		75,037,600		25,559,000		74.6%	-0.1%
	\$50.00	1	19,814,700	2.8%		15,390,684		4,424,016		77.7%	0.1%
Total		116	\$715,114,366			\$489,208,717		\$225,905,649		68.4%	-0.1%
2013	\$1.00	24	44,747,572	5.9%		27,364,205		17,383,367		61.2%	0.9%
thru	\$2.00	26	96,238,744	12.8%		62,569,027		33,669,717		65.0%	-0.1%
12/1/2012	\$3.00	14	98,290,005	13.1%		64,467,989		33,822,016		65.6%	0.1%
	\$5.00	40	227,698,760	30.3%		154,586,044		73,112,716		67.9%	-0.2%
	\$7.00	2	13,027,469	1.7%		8,854,331		4,173,138		68.0%	0.0%
	\$10.00	11	127,407,620	16.9%		90,019,270		37,388,350		70.7%	-0.3%
	\$20.00	7	113,461,400	15.1%		84,930,210		28,531,190		74.9%	0.1%
	\$50.00	3	31,469,700	4.2%		24,433,996		7,035,704		77.6%	0.0%
Total		127	\$752,341,270			\$517,225,071		\$235,116,199		68.7%	0.2%
Variance	\$1.00	1	-6,294,494		-12.3%	-3,947,791	-12.6%	-2,346,703	-11.9%	-0.19%	
2013 to	\$2.00	1	-3,235,064		-3.3%	-2,119,091	-3.3%	-1,115,973	-3.2%	-0.02%	
2012	\$3.00	0	9,008,247		10.1%	5,871,759	10.0%	3,136,488	10.2%	-0.04%	
	\$5.00	9	6,840,195		3.1%	4,431,285	3.0%	2,408,910	3.4%	-0.10%	
	\$7.00	-2	-3,615,570		-21.7%	-2,462,779	-21.8%	-1,152,791	-21.6%	-0.03%	
	\$10.00	-2	10,003,790		8.5%	7,307,050	8.8%	2,696,740	7.8%	0.20%	
	\$20.00	2	12,864,800		12.8%	9,892,610	13.2%	2,972,190	11.6%	0.26%	
	\$50.00	2	11,655,000		58.8%	9,043,312	58.8%	2,611,688	59.0%	-0.03%	
Total		11	\$37,226,904		5.2%	\$28,016,355	5.7%	\$9,210,549	4.1%	0.34%	

Notes - Instant Ticket Variances

Texas Lottery Commission
Instant Tickets by Price Point
Sales, Prize Expense, Sales Contribution and Payout Percentage With Year Over Year Changes
 Unaudited

			FY 2013		FY 2012	Difference
Sales	\$1 - \$7	1	\$480,002,550		\$477,299,236	\$2,703,314
Prize Exp.	\$1 - \$7	1	\$317,841,596		\$316,068,213	\$1,773,383
Sales Cont.	\$1 - \$7	1	\$162,160,954		\$161,231,023	\$929,931
Prize Exp. %	\$1 - \$7	1	66.2%		66.2%	0.0%
			FY 2013		FY 2012	Difference
Sales	\$10 - \$50	2	\$272,338,720		\$237,815,130	\$34,523,590
Prize Exp.	\$10 - \$50	2	\$199,383,476		\$173,140,504	\$26,242,972
Sales Cont.	\$10 - \$50	1	\$72,955,244		\$64,674,626	\$8,280,618
Prize Exp. %	\$10 - \$50	2	73.2%		72.8%	0.4%
			FY 2013		FY 2012	Difference
Sales	Instant		\$752,341,270		\$715,114,366	\$37,226,904
Prize Exp.	Instant		\$517,225,071		\$489,208,717	\$28,016,355
Sales Cont.	Instant		\$235,116,199		\$225,905,649	\$9,210,549
Prize Exp. %	Instant		68.7%		68.4%	0.3%

			FY 2013		FY 2012	Difference
Sales	\$1 - \$10		\$607,410,170		\$594,703,066	\$12,707,104
Prize Exp.	\$1 - \$10		\$407,860,865		\$398,780,433	\$9,080,433
Sales Cont.	\$1 - \$10		\$199,549,305		\$195,922,633	\$3,626,671
Prize Exp. %	\$1 - \$10		67.1%		67.1%	0.1%
			FY 2013		FY 2012	Difference
Sales	\$20 - \$50		\$144,931,100		\$120,411,300	\$24,519,800
Prize Exp.	\$20 - \$50		\$109,364,206		\$90,428,284	\$18,935,922
Sales Cont.	\$20 - \$50		\$35,566,894		\$29,983,016	\$5,583,878
Prize Exp. %	\$20 - \$50		75.5%		75.1%	0.4%
			FY 2013		FY 2012	Difference
Sales	Instant		\$752,341,270		\$715,114,366	\$37,226,904
Prize Exp.	Instant		\$517,225,071		\$489,208,717	\$28,016,355
Sales Cont.	Instant		\$235,116,199		\$225,905,649	\$9,210,549
Prize Exp. %	Instant		68.7%		68.4%	0.3%

Texas Lottery Commission
Weekly Sales Summary
& Comparison to Previous Week
 Unaudited

	Week Ending 12/01/2012		Week Ending 11/24/2012			
	<u>THIS WEEK</u>	% of Sales	<u>LAST WEEK</u>	% of Sales	<u>\$ change</u>	<u>% change</u>
Total Sales	<u>\$121,218,541</u>		<u>\$88,504,830</u>		<u>\$32,713,712</u>	36.96%
Instant Tickets	<u>\$58,420,598</u>	48.2%	<u>\$61,331,977</u>	69.3%	<u>-\$2,911,379</u>	-4.75%
Lotto	\$3,304,053	2.7%	\$2,768,876	3.1%	\$535,177	19.33%
Pick 3	\$5,123,778	4.2%	\$5,086,879	5.7%	\$36,899	0.73%
Pick 3 Sum It Up	\$97,511	0.1%	\$91,409	0.1%	\$6,102	6.68%
Cash Five	\$1,086,916	0.9%	\$1,021,878	1.2%	\$65,038	6.36%
Texas Two Step	\$925,805	0.8%	\$883,407	1.0%	\$42,398	4.80%
Mega Millions	\$2,358,380	1.9%	\$2,003,365	2.3%	\$355,015	17.72%
Megaplier	\$533,175	0.4%	\$472,723	0.5%	\$60,452	12.79%
Daily 4	\$1,319,684	1.1%	\$1,300,693	1.5%	\$18,992	1.46%
Daily 4 Sum It Up	\$92,240	0.1%	\$85,037	0.1%	\$7,203	8.47%
Powerball	\$43,264,700	35.7%	\$10,768,045	12.2%	\$32,496,655	301.79%
Power Play	\$2,894,606	2.4%	\$1,053,006	1.2%	\$1,841,600	174.89%
All or Nothing	\$1,797,096	1.5%	\$1,637,536	1.9%	\$159,560	9.74%
Total Draw Game Sales	<u>\$62,797,943</u>		<u>\$27,172,853</u>		<u>\$35,625,091</u>	131.11%

Totals may not sum due to rounding.

Texas Lottery Commission
Weekly Sales Summary
Unaudited

INSTANT TICKETS
TOP TEN SELLING GAMES

For the Week Ending: 12/01/12

Rank	Price Point	Game	Sales (Millions)
1	\$ 5	HAPPY HOLIDAYS	\$ 3.360
2	\$ 10	HOLIDAY DOUBLER	\$ 3.265
3	\$ 20	MERRY MILLIONS	\$ 3.092
4	\$ 20	\$500 MILLION EXTREME CASH BLAST	\$ 2.518
5	\$ 50	\$7,500,000 FORTUNE	\$ 2.161
6	\$ 3	LOTERIA	\$ 2.106
7	\$ 5	NUTCRACKER CASH	\$ 1.950
8	\$ 10	\$200 MILLION CASH SPECTACULAR	\$ 1.911
9	\$ 3	JINGLE BELL CROSSWORD	\$ 1.907
10	\$ 3	BONUS CASHWORD	\$ 1.700

Texas Lottery Commission
Prize Payout Tracking Report
Unaudited

Through Week Ending 12/01/12

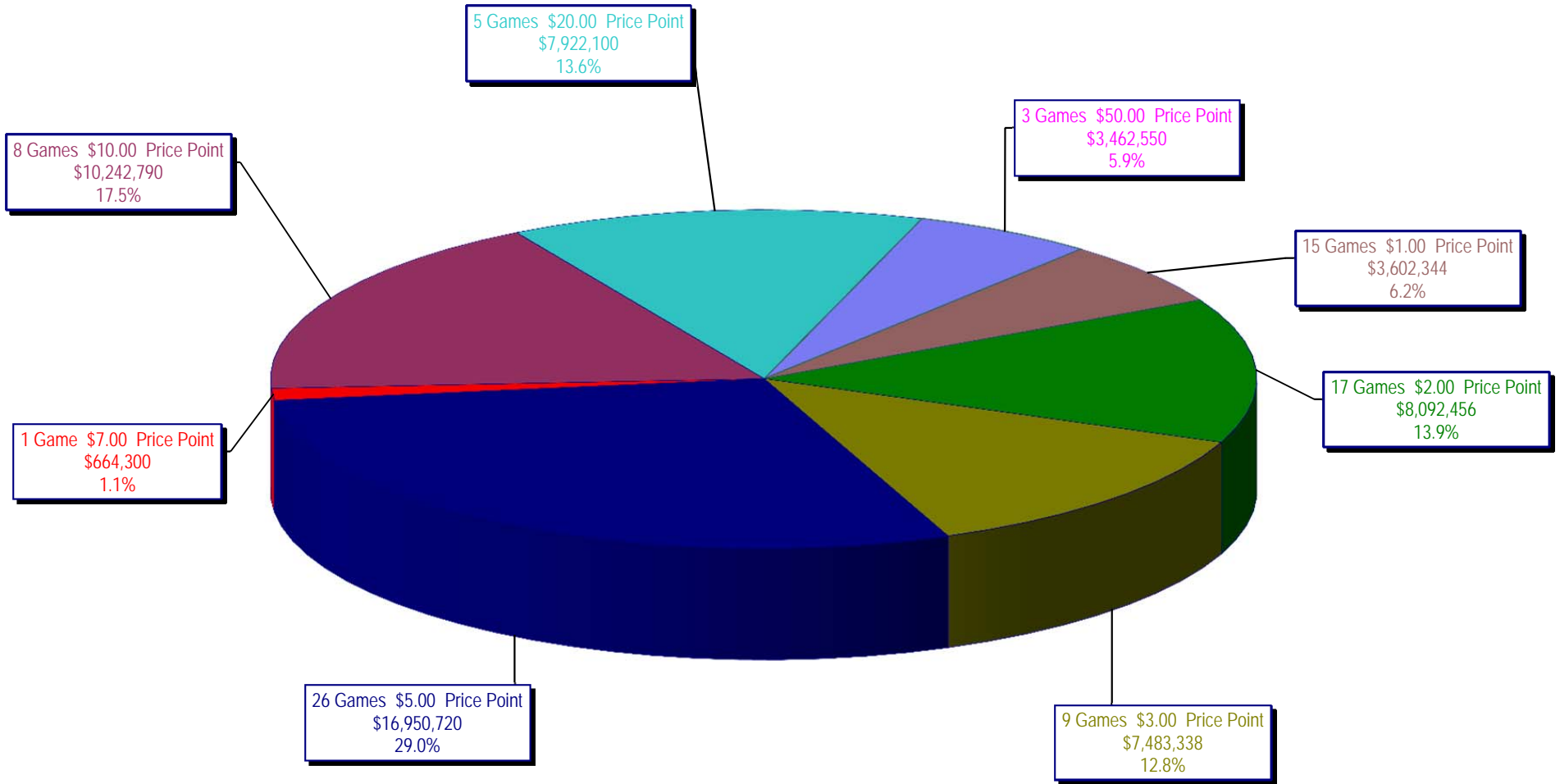
Draw Game Sales

		FY Sales Through Week Ending 12/1/2012		FY Prize Expense Through Week Ending 12/1/2012	Actual* Prize Payout	Base Payout (Prize Pool)
Lotto	\$	40,901,754	\$	27,324,593	66.81%	50.00%
Pick 3		66,810,346		36,919,620	55.26%	50.00%
Pick 3 Sum It Up		1,255,865		592,854	47.21%	50.00%
Cash Five		14,338,767		7,171,030	50.01%	50.00%
Texas Two Step		13,131,205		6,634,439	50.52%	50.00%
Mega Millions		27,642,783		13,460,848	48.70%	50.00%**
Megaplier		6,388,991		3,429,806	53.68%	N/A
Daily 4		17,498,404		7,626,025	43.58%	50.00%
Daily 4 Sum It Up		1,185,804		457,235	38.56%	50.00%
Powerball		92,415,597		47,754,947	51.67%	50.00%**
Power Play		8,661,649		4,898,962	56.56%	N/A
All or Nothing		24,856,935		14,967,844	60.22%	50.00%
Totals	\$	315,088,099	\$	171,238,203	54.35%	

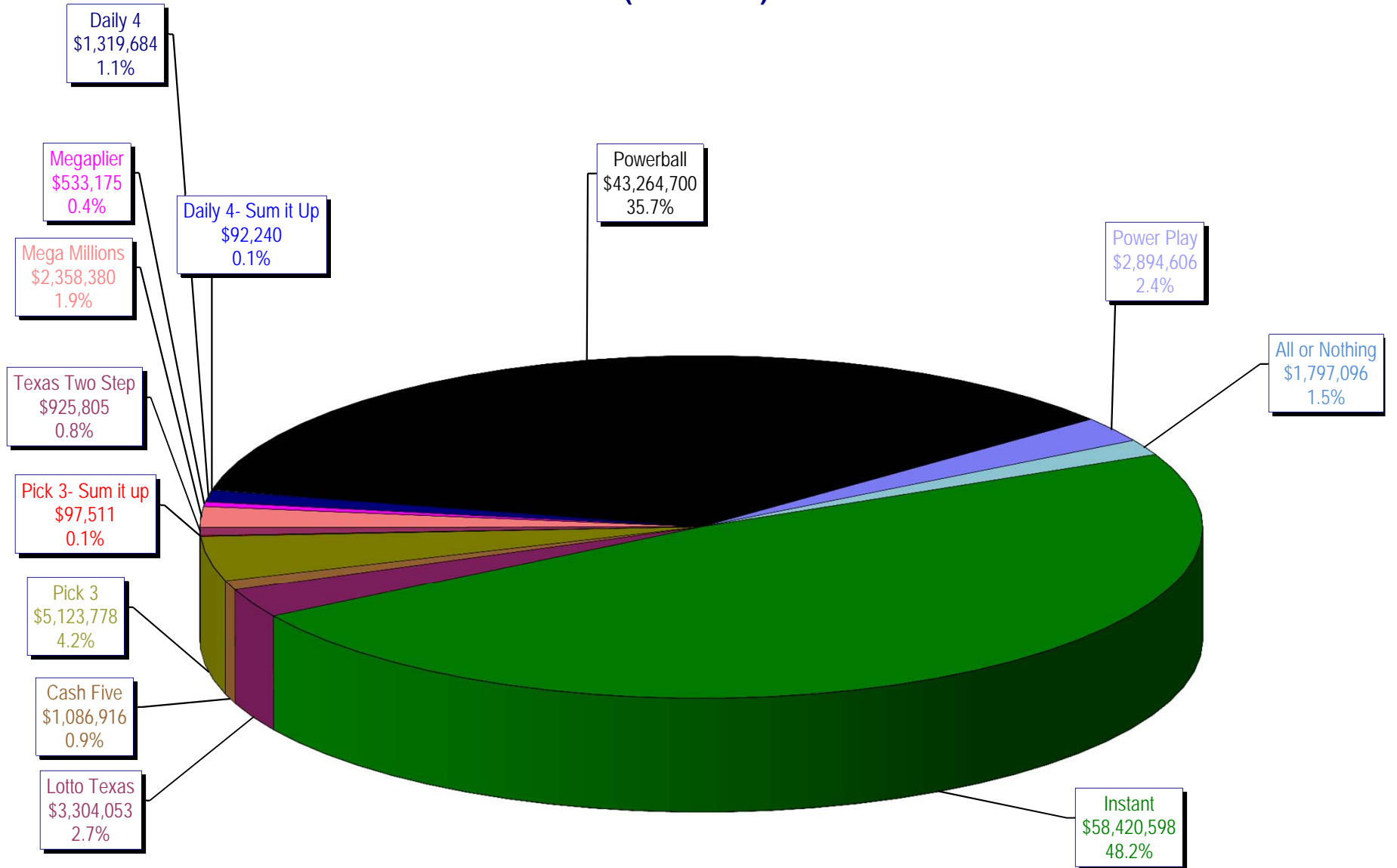
* Before Unclaimed Prizes

** Estimated; depends on # of guaranteed prizes won in Texas

Texas Lottery Commission
Instant Ticket Sales
For the Week Ending 12/01/12
(Unaudited)



Texas Lottery Commission
All Game Sales
For the Week Ending 12/01/12
(Unaudited)



Texas Lottery Commission - Weekly Sales Summary for FY 2013 (Unaudited)

Week Ended	Instant Games	New Games & Dates	Lotto Texas	Jackpot W S	Pick 3	Pick 3 Sum It Up	Cash Five	Texas Two Step	Jackpot M TH	Mega Millions	Jackpot T F	Megaplier	Daily 4	Daily 4 Sum It Up	Powerball	Jackpot W S	Power Play	All or Nothing	Total	Per Cap.
9/1/2012	56,975,312	1446 (\$1, N); 1444 (\$2, N) - 08/27/12	2,972,415	12 13	4,967,337	105,441	1,198,597	1,455,689	500 675	2,769,421	73 83	612,072	1,419,103	97,265	2,680,694	70 80	364,030		75,617,375	2.95
9/8/2012	56,941,761	1440 (\$2, N); 1458 (\$3, N); 1459 (\$5, N) - 09/03/12	3,005,564	14 15	5,112,132	106,959	1,185,494	1,179,003	875 200	3,140,536	93 105	665,392	1,412,279	99,861	3,002,910	90 100	395,287		76,247,178	2.97
9/15/2012	56,302,875	1452 (\$3, N) - 09/10/12	2,999,894	16 17	4,785,209	95,720	1,118,519	894,412	225 200	2,684,227	120 12	580,869	1,290,478	90,795	3,373,296	110 125	417,470	2,526,342	77,160,105	3.01
9/22/2012	54,974,438	1460 (\$1, N); 1461 (\$5, N) - 09/17/12	2,986,898	18 19	4,611,684	89,173	1,091,440	986,264	225 325	1,874,336	15 12	452,082	1,258,191	86,390	4,122,790	149 174	479,344	2,531,686	75,544,715	2.94
9/29/2012	54,606,674	1462 (\$2, N); 1472 (\$10, N) - 09/24/12	3,047,519	20 21	4,708,250	90,752	1,077,739	1,313,257	475 625	1,884,366	14 21	452,334	1,278,847	87,211	3,779,359	200 40	445,091	2,297,966	75,069,364	2.92
10/6/2012	59,223,327	1464 (\$5, N) - 10/01/12	3,164,231	22 23	4,947,571	96,251	1,121,146	1,188,386	800 200	2,055,918	28 36	482,303	1,310,612	89,270	2,266,428	50 40	312,877	2,244,980	78,503,300	3.06
10/13/2012	57,075,606	1465 (\$1, N); 1466 (\$20, N) - 10/08/2012	3,133,742	24 25	4,793,793	89,663	1,074,687	865,146	225 200	2,163,099	45 53	492,614	1,261,858	84,585	2,241,120	50 60	309,684	2,128,476	75,714,073	2.95
10/20/2012	56,630,134	1467 (\$1, N); 1468 (\$5, N) - 10/15/12	3,172,820	26 27	4,959,071	88,413	1,074,980	970,100	225 325	1,984,966	61 12	466,730	1,296,602	84,868	2,447,518	70 80	328,436	2,124,439	75,629,077	2.95
10/27/2012	55,789,743	1469 (\$2, N); 1470 (\$10, N) - 10/22/2012	3,204,694	28 29	5,550,567	96,242	1,063,201	1,226,578	450 600	1,778,725	13 21	430,528	1,381,019	91,618	2,914,062	90 100	371,273	2,021,684	75,919,933	2.96
11/3/2012	58,142,777	1503 (\$5, N) - 10/29/2012	3,392,650	30 31	5,501,964	101,742	1,078,593	860,073	200 225	1,950,117	27 32	462,385	1,393,099	93,773	3,466,242	110 124	424,170	1,913,200	78,780,785	3.07
11/10/2012	57,484,804	1475 (\$1, N); 1476 (\$3, N) - 11/05/2012	3,061,999	32 4	5,468,924	100,767	1,083,928	837,666	200 200	1,783,099	12 13	430,343	1,402,194	94,451	4,246,246	143 168	491,538	1,861,718	78,347,676	3.05
11/17/2012	55,805,228	1477 (\$2, N); 1478 (\$5, N) - 11/12/2012	2,599,190	5 6	5,248,059	91,989	1,059,723	920,319	225 300	1,841,571	19 26	440,783	1,345,121	88,391	5,638,425	185 214	615,323	1,771,812	77,465,933	3.02
11/24/2012	61,331,977	1394 (\$50, N) - 11/19/2012	2,768,876	7 8	5,086,879	91,409	1,021,878	883,407	425 200	2,003,365	33 41	472,723	1,300,693	85,037	10,768,045	250 325	1,053,006	1,637,536	88,504,830	3.45
12/1/2012	58,420,598	0	3,304,053	9 10	5,123,778	97,511	1,086,916	925,805	225 275	2,358,380	49 12	533,175	1,319,684	92,240	43,264,700	550 40	2,894,606	1,797,096	121,218,541	4.72
weekly change	-4.7%		19.3%		0.7%	6.7%	6.4%	4.8%		17.7%		12.8%	1.5%	8.5%	30.18%		174.9%	9.7%	37.0%	
SALES	SALES	SALES	SALES	SALES	SALES	SALES	SALES	SALES	SALES	SALES	SALES	SALES	SALES	SALES	SALES	SALES	SALES	SALES	SALES	% of Sales
Calendar Year to date	2,885,744,082		151,647,591		252,292,954	5,144,799	58,406,886	57,611,027		185,767,225		35,898,339	65,139,088	4,540,630	222,878,689		25,659,748	24,856,935	3,975,587,991	100.0%
Fiscal Year to date 2013	752,341,270		40,901,754		66,810,346	1,255,865	14,338,767	13,131,205		27,642,783		6,388,991	17,498,404	1,185,804	92,415,597		8,661,649	24,856,935	1,067,429,369	100.0%