



WEEKLY SALES SUMMARY

Unaudited

[Week Ending: 12/02/2017](#)

Texas Lottery Commission
Fiscal Year to Date Sales Comparison
Unaudited

Through the Week Ending 12/02/2017 (14 Weeks)

Sales by Game	FY 2016 *	FY 2017 **	FY 2018	\$ Change		% Change	
				FY 2018 to FY 2016	FY 2018 to FY 2017	FY 2018 to FY 2016	FY 2018 to FY 2017
Scratch Tickets	\$ 895,520,618	\$ 938,338,916	\$ 1,025,235,525	\$ 129,714,907	\$ 86,896,609	14.5%	9.3%
Lotto Texas	33,506,413	28,501,518	29,802,314	-3,704,099	1,300,796	-11.1%	4.6%
Lotto Extra	5,650,801	5,449,654	6,351,334	700,533	901,680	12.4%	16.5%
Pick 3	66,241,271	62,947,283	63,575,096	-2,666,175	627,813	-4.0%	1.0%
Pick 3 Sum It Up	1,327,446	1,201,519	1,247,355	-80,091	45,837	-6.0%	3.8%
Cash Five	12,293,085	11,274,117	10,817,611	-1,475,475	-456,507	-12.0%	-4.0%
Texas Two Step	14,027,454	13,102,562	12,321,952	-1,705,502	-780,610	-12.2%	-6.0%
Mega Millions	33,479,980	26,532,194	31,192,427	-2,287,553	4,660,233	-6.8%	17.6%
Megaplier	8,358,855	7,324,288	7,053,533	-1,305,322	-270,755	-15.6%	-3.7%
MM Just the Jackpot	-	-	342,681	342,681	342,681	-	-
Daily 4	22,709,759	23,314,381	27,334,536	4,624,778	4,020,155	20.4%	17.2%
Daily 4 Sum It Up	1,174,605	1,220,216	1,471,554	296,949	251,338	25.3%	20.6%
Powerball	52,724,200	61,328,827	49,682,179	-3,042,021	-11,646,648	-5.8%	-19.0%
Power Play	6,906,016	8,519,497	7,820,775	914,759	-698,722	13.2%	-8.2%
All or Nothing	8,327,188	7,497,752	7,433,482	-893,706	-64,270	-10.7%	-0.9%
Texas Triple Chance	7,109,661	4,149,178	3,271,388	-3,838,273	-877,790	-54.0%	-21.2%
Total	\$ 1,169,357,350	\$ 1,200,701,901	\$ 1,284,953,741	\$ 115,596,391	\$ 84,251,840	9.9%	7.0%

* 3 extra days

** 1 extra day

Texas Lottery Commission
Fiscal Year to Date Cumulative Average Sales Comparison
Unaudited

Through the Week Ending 12/02/2017 (14 Weeks)

Sales by Game	FY 2016	FY 2017	FY 2018
Scratch Tickets	\$ 9,328,340	\$ 9,982,329	\$ 11,024,038
Lotto Texas	349,025	303,208	320,455
Lotto Extra	58,863	57,975	68,294
Pick 3	690,013	669,652	683,603
Pick 3 Sum It Up	13,828	12,782	13,412
Cash Five	128,053	119,937	116,318
Texas Two Step	146,119	139,389	132,494
Mega Millions	348,750	282,257	335,402
Megaplier	87,071	77,918	75,844
MM Just the Jackpot	-	- **	9,519
Daily 4	236,560	248,025	293,920
Daily 4 Sum It Up	12,235	12,981	15,823
Powerball	549,210	652,434	534,217
Power Play	71,938	90,633	84,094
All or Nothing	86,742	79,763	79,930
Texas Triple Chance	* 101,567	44,140	35,176
Total	\$ 12,208,313	\$ 12,773,424	\$ 13,822,541

thru 12/05/2015

96 days

*

70 days

thru 12/03/2016

94 days

**

thru 12/02/2017

93 days

36 days

Texas Lottery Commission
Fiscal Year Over Year Change in Sales
Unaudited
FY 2018 Compared to FY 2017

			SCRATCH TICKETS				DRAW GAMES				TOTAL SALES			
FY 2018			FY 2018	FY 2017	Difference	% change - Cumulative Sales	FY 2018	FY 2017	Difference	% change - Cumulative Sales	FY 2018	FY 2017	Difference	% change - Cumulative Sales
Week	Week	Ending												
1	9/2/2017 *		\$23,058,926	\$32,980,266	(\$9,921,340)	-30.1%	\$6,902,847	\$10,218,656	(\$3,315,809)	-32.4%	\$29,961,773	\$43,198,922	(\$13,237,149)	-30.6%
2	9/9/2017		\$71,784,232	\$65,952,418	\$5,831,814	8.8%	\$18,779,001	\$19,635,377	(\$856,376)	-4.4%	\$90,563,233	\$85,587,795	\$4,975,438	5.8%
3	9/16/2017		\$72,828,393	\$66,196,270	\$6,632,123	10.0%	\$19,679,292	\$20,915,290	(\$1,235,999)	-5.9%	\$92,507,685	\$87,111,560	\$5,396,125	6.2%
4	9/23/2017		\$71,147,147	\$64,383,005	\$6,764,142	10.5%	\$18,601,742	\$17,451,165	\$1,150,577	6.6%	\$89,748,889	\$81,834,170	\$7,914,719	9.7%
5	9/30/2017		\$74,749,619	\$67,349,951	\$7,399,668	11.0%	\$18,436,682	\$17,519,852	\$916,830	5.2%	\$93,186,301	\$84,869,803	\$8,316,498	9.8%
6	10/7/2017		\$78,134,381	\$71,598,690	\$6,535,691	9.1%	\$19,297,281	\$18,211,107	\$1,086,174	6.0%	\$97,431,662	\$89,809,797	\$7,621,865	8.5%
7	10/14/2017		\$74,084,207	\$69,444,762	\$4,639,445	6.7%	\$19,185,335	\$18,075,261	\$1,110,074	6.1%	\$93,269,542	\$87,520,023	\$5,749,519	6.6%
8	10/21/2017		\$77,631,892	\$69,317,066	\$8,314,826	12.0%	\$19,573,636	\$18,422,336	\$1,151,300	6.2%	\$97,205,528	\$87,739,402	\$9,466,126	10.8%
9	10/28/2017		\$76,385,130	\$69,729,599	\$6,655,531	9.5%	\$18,788,634	\$18,535,248	\$253,386	1.4%	\$95,173,764	\$88,264,847	\$6,908,917	7.8%
10	11/4/2017		\$78,814,323	\$73,451,702	\$5,362,621	7.3%	\$19,564,629	\$20,151,939	(\$587,310)	-2.9%	\$98,378,952	\$93,603,641	\$4,775,312	5.1%
11	11/11/2017		\$78,572,697	\$70,998,320	\$7,574,377	10.7%	\$19,317,440	\$19,925,460	(\$608,020)	-3.1%	\$97,890,137	\$90,923,780	\$6,966,358	7.7%
12	11/18/2017		\$81,674,704	\$75,265,196	\$6,409,508	8.5%	\$19,938,001	\$21,424,637	(\$1,486,636)	-6.9%	\$101,612,705	\$96,689,833	\$4,922,872	5.1%
13	11/25/2017		\$84,916,870	\$68,983,157	\$15,933,713	23.1%	\$19,968,524	\$24,223,331	(\$4,254,808)	-17.6%	\$104,885,393	\$93,206,488	\$11,678,905	12.5%
14	12/2/2017		\$81,453,005	\$72,688,514	\$8,764,491	12.1%	\$21,685,175	\$17,653,328	\$4,031,847	22.8%	\$103,138,180	\$90,341,842	\$12,796,338	14.2%
15	12/9/2017			\$71,676,549				\$18,150,590				\$89,827,139		
16	12/16/2017			\$73,909,726				\$19,814,333				\$93,724,059		
17	12/23/2017			\$77,369,179				\$19,276,415				\$96,645,594		
18	12/30/2017			\$80,868,854				\$19,289,161				\$100,158,015		
19	1/6/2018			\$73,328,624				\$18,611,644				\$91,940,268		
20	1/13/2018			\$73,471,643				\$20,351,397				\$93,823,040		
21	1/20/2018			\$72,229,342				\$20,349,310				\$92,578,652		
22	1/27/2018			\$72,056,793				\$21,668,657				\$93,725,450		
23	2/3/2018			\$77,292,806				\$22,161,789				\$99,454,595		
24	2/10/2018			\$78,699,192				\$22,100,245				\$100,799,437		
25	2/17/2018			\$77,864,124				\$24,776,465				\$102,640,589		
26	2/24/2018			\$80,287,015				\$28,133,116				\$108,420,131		
27	3/3/2018			\$87,500,184				\$20,213,859				\$107,714,043		
28	3/10/2018			\$84,966,053				\$21,024,757				\$105,990,810		
29	3/17/2018			\$82,972,977				\$20,434,291				\$103,407,268		
30	3/24/2018			\$82,217,628				\$20,282,992				\$102,500,620		
31	3/31/2018			\$86,271,920				\$19,497,142				\$105,769,062		
32	4/7/2018			\$81,499,404				\$17,854,294				\$99,353,698		
33	4/14/2018			\$81,831,134				\$17,865,636				\$99,696,770		
34	4/21/2018			\$80,531,863				\$18,337,257				\$98,869,120		
35	4/28/2018			\$81,433,819				\$18,956,981				\$100,390,800		
36	5/5/2018			\$84,857,262				\$19,489,624				\$104,346,886		
37	5/12/2018			\$81,090,824				\$19,420,237				\$100,511,061		
38	5/19/2018			\$80,557,866				\$20,939,291				\$101,497,157		
39	5/26/2018			\$78,141,293				\$21,072,651				\$99,213,944		
40	6/2/2018			\$78,991,820				\$23,569,252				\$102,561,072		
41	6/9/2018			\$77,859,970				\$29,337,930				\$107,197,900		
42	6/16/2018			\$75,964,093				\$18,618,777				\$94,582,870		

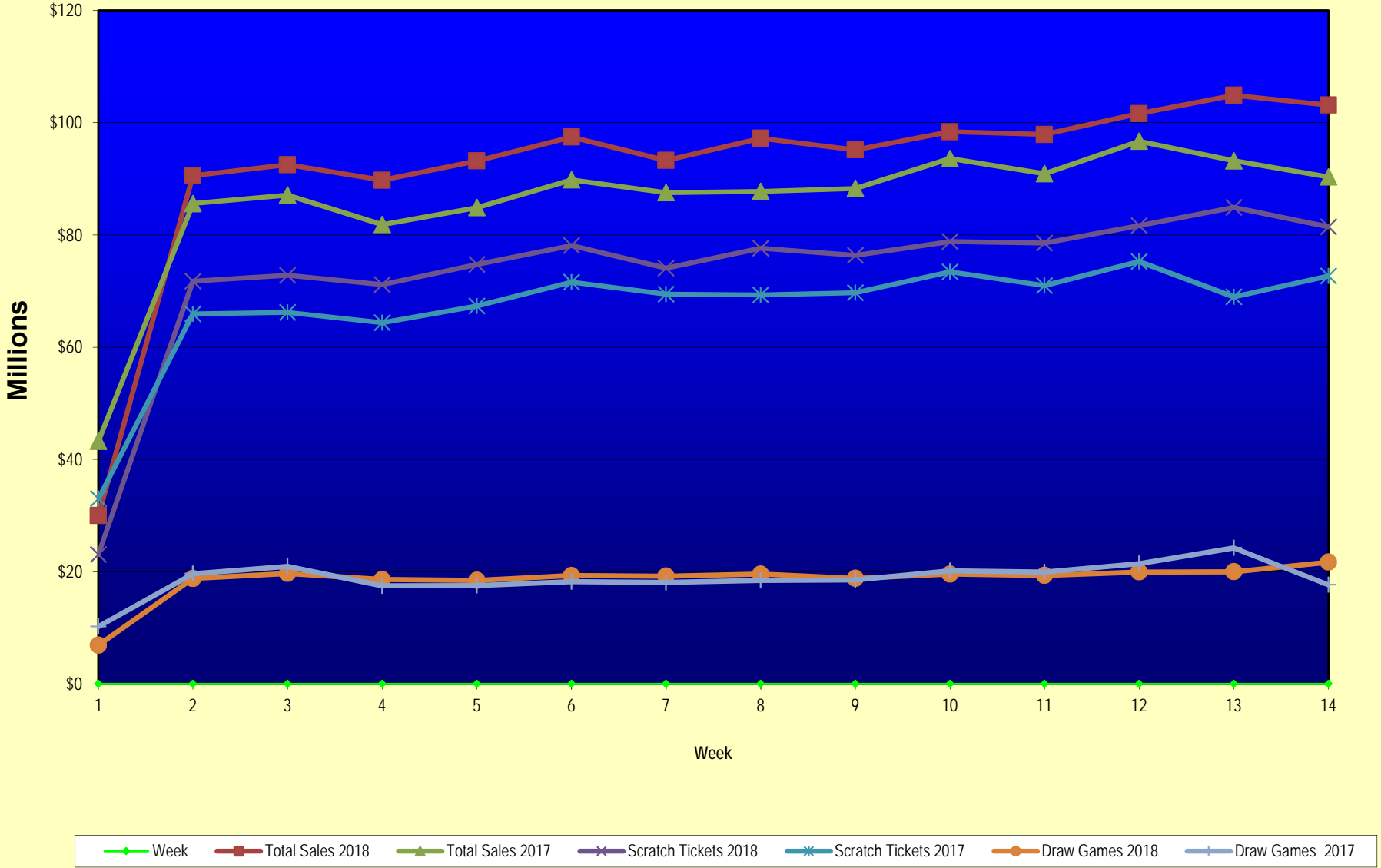
Texas Lottery Commission
Fiscal Year Over Year Change in Sales
Unaudited
FY 2018 Compared to FY 2017

			SCRATCH TICKETS				DRAW GAMES				TOTAL SALES			
FY 2018			FY 2018	FY 2017	Difference	% change - Cumulative Sales	FY 2018	FY 2017	Difference	% change - Cumulative Sales	FY 2018	FY 2017	Difference	% change - Cumulative Sales
Week	Week	Ending												
43	6/23/2018			\$75,379,863				\$18,464,310				\$93,844,173		
44	6/30/2018			\$76,450,854				\$19,685,004				\$96,135,858		
45	7/7/2018			\$75,420,516				\$20,817,697				\$96,238,213		
46	7/14/2018			\$74,068,426				\$21,553,240				\$95,621,666		
47	7/21/2018			\$75,926,884				\$21,909,933				\$97,836,817		
48	7/28/2018			\$68,526,927				\$22,791,762				\$91,318,689		
49	8/4/2018			\$74,104,794				\$27,396,555				\$101,501,349		
50	8/11/2018			\$73,356,820				\$37,340,879				\$110,697,699		
51	8/18/2018			\$74,114,510				\$42,787,014				\$116,901,524		
52	8/25/2018			\$70,061,982				\$55,854,516				\$125,916,498		
	8/31/2018 **			\$43,727,573				\$9,679,652				\$53,407,225		
Total thru Current Week			\$1,025,235,525	\$938,338,916	\$86,896,609	9.3%	\$259,718,216	\$262,362,985	(\$2,644,769)	-1.0%	\$1,284,953,741	\$1,200,701,901	\$84,251,840	7.0%
Fiscal Year Total			\$1,025,235,525	\$3,935,220,022			\$259,718,216	\$1,142,241,630			\$1,284,953,741	\$5,077,461,652		

* FY 18 includes 2 days; FY 17 includes 3 days

** FY 18 includes 6 days; FY 17 includes 5 days

Texas Lottery Commission Fiscal Year Over Year Change in Sales



Note: Week 1 is not a full week of sales as this report is prepared on a Fiscal Year basis.

Texas Lottery Commission
Scratch Tickets by Price Point
Sales, Prize Expense, Sales Contribution and Payout Percentage With Year Over Year Changes
Unaudited

Fiscal Year	Price Point	# of Active Games	FY Sales	% of Scratch Ticket Sales	Year over Year Change in Sales	FY Prize Expense	Year over Year Change in Prize Expense	FY Sales Contribution	Year over Year Change in Contribution	Average Prize Payout %	Year over Year Change in Payout %
2017	\$1.00	17	37,449,508	4.0%		22,682,561		14,766,947		60.6%	0.6%
Through	\$2.00	22	79,210,488	8.4%		51,631,591		27,578,897		65.2%	0.0%
12/3/2016	\$3.00	8	64,856,595	6.9%		42,754,176		22,102,419		65.9%	0.0%
	\$5.00	41	296,960,445	31.6%		201,759,838		95,200,607		67.9%	0.0%
	\$10.00	16	192,255,420	20.5%		135,768,481		56,486,939		70.6%	0.6%
	\$20.00	11	220,669,360	23.5%		165,348,719		55,320,641		74.9%	0.0%
	\$50.00	4	46,937,100	5.0%		36,523,978		10,413,122		77.8%	0.0%
Total		119	\$938,338,916			\$656,469,345		\$281,869,571		70.0%	0.6%
2018	\$1.00	17	37,487,007	3.7%		22,706,731		14,780,276		60.6%	0.5%
Through	\$2.00	17	72,510,594	7.1%		47,188,212		25,322,382		65.1%	-0.1%
12/2/2017	\$3.00	10	73,862,139	7.2%		48,713,896		25,148,243		66.0%	0.1%
	\$5.00	44	292,238,045	28.5%		198,674,231		93,563,814		68.0%	0.0%
	\$10.00	16	252,758,880	24.7%		177,078,055		75,680,825		70.1%	-0.3%
	\$20.00	14	216,969,560	21.2%		162,623,910		54,345,650		75.0%	0.0%
	\$50.00	4	79,409,300	7.7%		61,917,225		17,492,075		78.0%	0.1%
Total		122	\$1,025,235,525			\$718,902,260		\$306,333,265		70.1%	0.4%
Variance	\$1.00	0	37,499		0.1%	24,170	0.1%	13,329	0.1%	0.00%	
2018 to	\$2.00	-5	-6,699,894		-8.5%	-4,443,379	-8.6%	-2,256,515	-8.2%	-0.11%	
2017	\$3.00	2	9,005,544		13.9%	5,959,719	13.9%	3,045,825	13.8%	0.03%	
	\$5.00	3	-4,722,400		-1.6%	-3,085,607	-1.5%	-1,636,793	-1.7%	0.04%	
	\$10.00	0	60,503,460		31.5%	41,309,573	30.4%	19,193,887	34.0%	-0.56%	
	\$20.00	3	-3,699,800		-1.7%	-2,724,809	-1.6%	-974,991	-1.8%	0.02%	
	\$50.00	0	32,472,200		69.2%	25,393,247	69.5%	7,078,953	68.0%	0.16%	
Total		3	\$86,896,609		9.3%	\$62,432,915	9.5%	\$24,463,694	8.7%	0.16%	

Notes - Scratch Ticket Variances

Texas Lottery Commission
Scratch Tickets by Price Point
Sales, Prize Expense, Sales Contribution and Payout Percentage With Year Over Year Changes
Unaudited

			FY 2018		FY 2017	Difference
Sales	\$1 - \$5		\$476,097,785		\$478,477,036	-\$2,379,251
Prize Exp.	\$1 - \$5		\$317,283,070		\$318,828,166	-\$1,545,096
Sales Cont.	\$1 - \$5		\$158,814,715		\$159,648,870	-\$834,155
Prize Exp. %	\$1 - \$5		66.6%		66.6%	0.0%
			FY 2018		FY 2017	Difference
Sales	\$10 - \$50		\$549,137,740		\$459,861,880	\$89,275,860
Prize Exp.	\$10 - \$50		\$401,619,190		\$337,641,178	\$63,978,011
Sales Cont.	\$10 - \$50		\$147,518,550		\$122,220,702	\$25,297,849
Prize Exp. %	\$10 - \$50		73.1%		73.4%	-0.3%
			FY 2018		FY 2017	Difference
Sales	Scratch		\$1,025,235,525		\$938,338,916	\$86,896,609
Prize Exp.	Scratch		\$718,902,260		\$656,469,345	\$62,432,915
Sales Cont.	Scratch		\$306,333,265		\$281,869,571	\$24,463,694
Prize Exp. %	Scratch		70.1%		70.0%	0.2%

			FY 2018		FY 2017	Difference
Sales	\$1 - \$10		\$728,856,665		\$670,732,456	\$58,124,209
Prize Exp.	\$1 - \$10		\$494,361,125		\$454,596,648	\$39,764,477
Sales Cont.	\$1 - \$10		\$234,495,540		\$216,135,808	\$18,359,732
Prize Exp. %	\$1 - \$10		67.8%		67.8%	0.1%
			FY 2018		FY 2017	Difference
Sales	\$20 - \$50		\$296,378,860		\$267,606,460	\$28,772,400
Prize Exp.	\$20 - \$50		\$224,541,135		\$201,872,697	\$22,668,438
Sales Cont.	\$20 - \$50		\$71,837,725		\$65,733,763	\$6,103,962
Prize Exp. %	\$20 - \$50		75.8%		75.4%	0.3%
			FY 2018		FY 2017	Difference
Sales	Scratch		\$1,025,235,525		\$938,338,916	\$86,896,609
Prize Exp.	Scratch		\$718,902,260		\$656,469,345	\$62,432,915
Sales Cont.	Scratch		\$306,333,265		\$281,869,571	\$24,463,694
Prize Exp. %	Scratch		70.1%		70.0%	0.2%

Texas Lottery Commission
 Weekly Sales Summary
 & Comparison to Previous Week
 Unaudited

	Week Ending 12/02/2017	% of Sales	Week Ending 11/25/2017	% of Sales	\$ change	% change
	<u>THIS WEEK</u>		<u>LAST WEEK</u>			
Total Sales	<u>\$103,138,180</u>		<u>\$104,885,393</u>		<u>-\$1,747,214</u>	-1.67%
Scratch Tickets	<u>\$81,453,005</u>	79.0%	<u>\$84,916,870</u>	81.0%	<u>-\$3,463,865</u>	-4.08%
Lotto	\$2,485,060	2.4%	\$2,353,671	2.2%	\$131,389	5.58%
Lotto Extra	\$527,939	0.5%	\$504,985	0.5%	\$22,954	4.55%
Pick 3	\$4,873,294	4.7%	\$4,590,443	4.4%	\$282,852	6.16%
Pick 3 Sum It Up	\$92,503	0.1%	\$87,556	0.1%	\$4,947	5.65%
Cash Five	\$822,515	0.8%	\$779,967	0.7%	\$42,548	5.46%
Texas Two Step	\$1,037,952	1.0%	\$1,056,541	1.0%	-\$18,589	-1.76%
Mega Millions	\$3,461,973	3.4%	\$2,980,136	2.8%	\$481,837	16.17%
Megaplier	\$516,938	0.5%	\$452,693	0.4%	\$64,245	14.19%
MM Just the Jackpot	\$45,540	0.0%	\$45,225	0.0%	\$315	0.70%
Daily 4	\$2,057,256	2.0%	\$1,908,926	1.8%	\$148,331	7.77%
Daily 4 Sum It Up	\$111,002	0.1%	\$99,032	0.1%	\$11,971	12.09%
Powerball	\$4,218,618	4.1%	\$3,780,406	3.6%	\$438,212	11.59%
Power Play	\$638,061	0.6%	\$582,194	0.6%	\$55,867	9.60%
All or Nothing	\$556,758	0.5%	\$522,808	0.5%	\$33,950	6.49%
Texas Triple Chance	\$239,766	0.2%	\$223,942	0.2%	\$15,824	7.07%
Total Draw Game Sales	<u>\$21,685,175</u>		<u>\$19,968,524</u>		<u>\$1,716,652</u>	8.60%

* Totals may not sum due to rounding.

Texas Lottery Commission
Weekly Sales Summary
Unaudited

SCRATCH TICKETS
TOP TEN SELLING GAMES

For the week ending: 12/02/2017

Rank	Price Point	Game	Sales (Millions)
1	\$ 10	\$50 OR \$100!	\$ 4.928
2	\$ 10	SEASON'S GREETINGS	\$ 4.225
3	\$ 10	MEGA LOTERIA	\$ 3.902
4	\$ 50	TEXAS LOTTERY PLATINUM	\$ 3.857
5	\$ 5	SUPER LOTERIA	\$ 3.483
6	\$ 20	TEXAS LOTTERY GOLD	\$ 3.187
7	\$ 5	DIAMOND MINE 9X	\$ 3.173
8	\$ 20	INSTANT MILLIONAIRE	\$ 2.713
9	\$ 10	TEXAS LOTTERY BLACK	\$ 2.627
10	\$ 20	100X THE CASH	\$ 2.418

Texas Lottery Commission
Prize Payout Tracking Report
Unaudited

Through the week ending: 12/02/2017

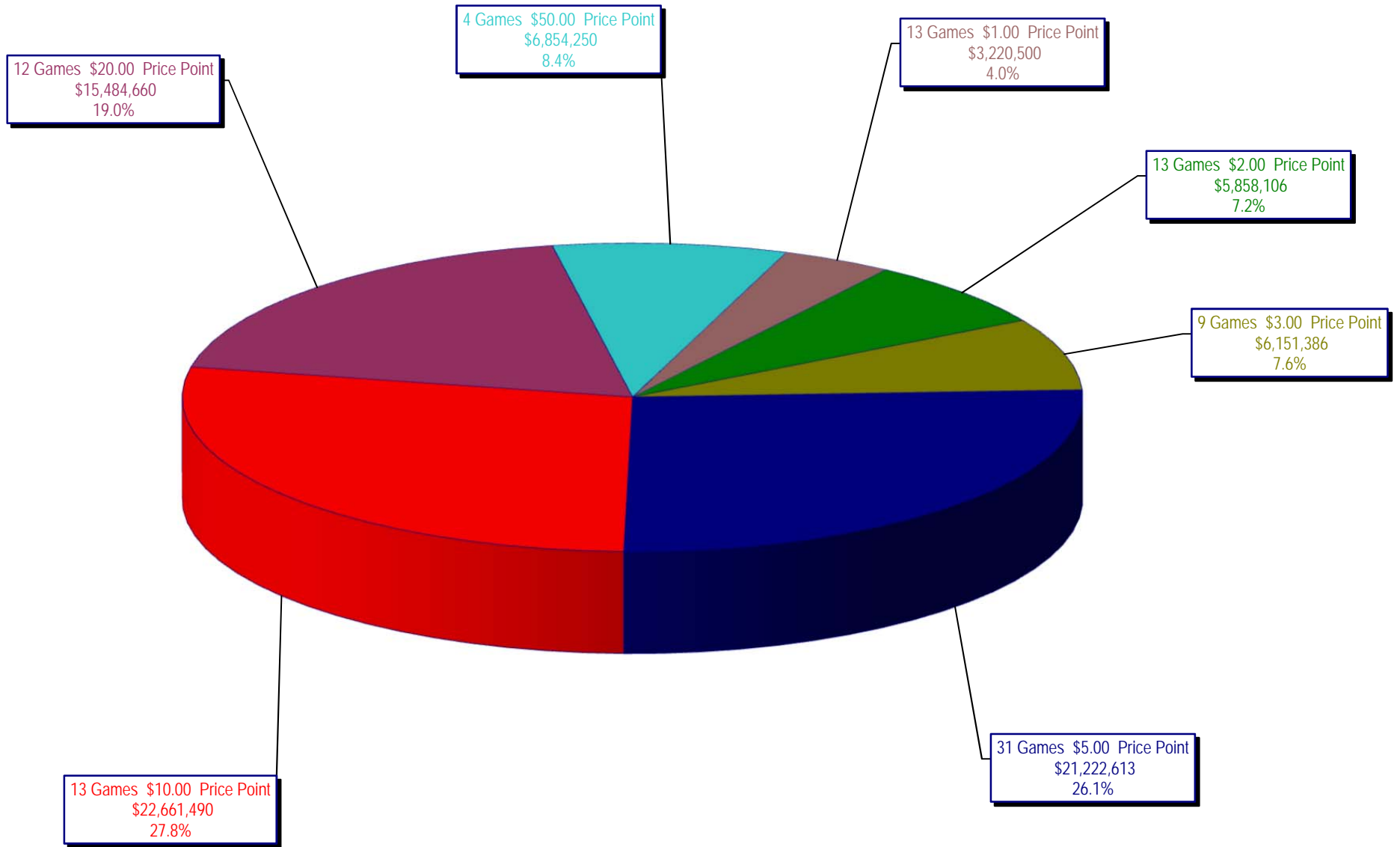
Draw Game Sales

		FY Sales Through Week Ending 12/2/2017		FY Prize Expense Through Week Ending 12/2/2017	Actual* Prize Payout	Base Payout (Prize Pool)
Lotto	\$	29,802,314	\$	14,662,071	49.20%	50.00%
Lotto Extra		6,351,334		3,672,826	57.83%	53.70%
Pick 3		63,575,096		28,936,150	45.51%	50.00%
Pick 3 Sum It Up		1,247,355		560,530	44.94%	50.00%
Cash Five		10,817,611		5,408,805	50.00%	50.00%
Texas Two Step		12,321,952		6,200,443	50.32%	50.00%
Mega Millions		31,192,427		16,388,692	52.54%	50.00%**
Megaplier		7,053,533		3,684,412	52.23%	N/A
MM Just the Jackpot		342,681		166,135	48.48%	50.00%**
Daily 4		27,334,536		17,965,500	65.72%	50.00%
Daily 4 Sum It Up		1,471,554		573,698	38.99%	50.00%
Powerball		49,682,179		25,003,320	50.33%	50.00%**
Power Play		7,820,775		3,938,748	50.36%	N/A
All or Nothing		7,433,482		4,198,904	56.49%	55.98%
Texas Triple Chance		3,271,388		1,490,091	45.55%	54.42%
Totals	\$	259,718,216	\$	132,850,325	51.15%	

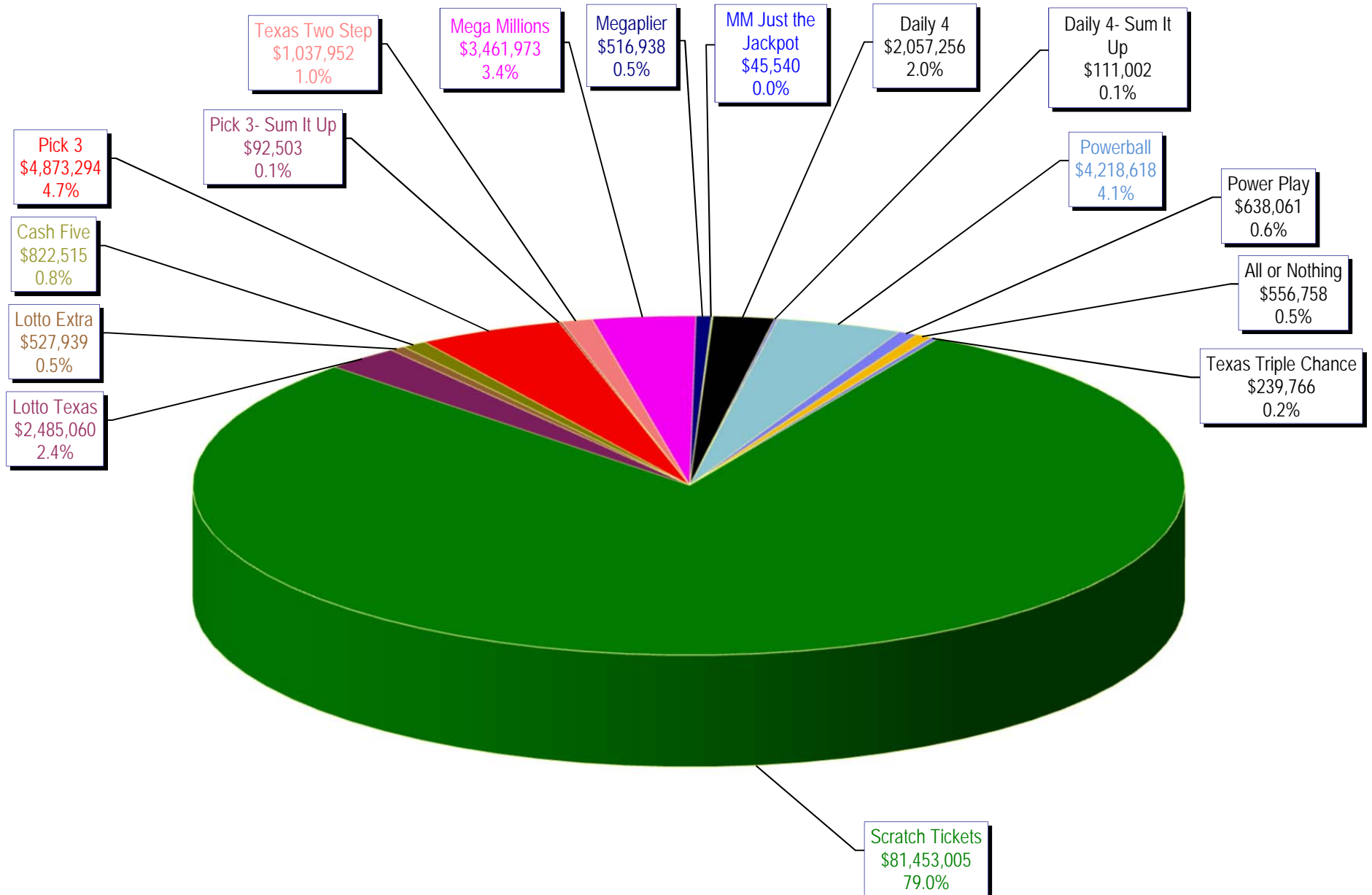
* Before Unclaimed Prizes

**Estimated; depends on # of guaranteed prizes won in Texas

Texas Lottery Commission
Scratch Ticket Sales
For the week ending 12/02/2017
(Unaudited)



Texas Lottery Commission
All Game Sales
For the week ending 12/02/2017
(Unaudited)



Texas Lottery Commission - Weekly Sales Summary for FY 2017 (Unaudited)

Week Ended	Scratch Tickets	New Games & Dates	Lotto Texas	Jackpot W	S	Lotto Extra	Pick 3	Pick 3 Sum It Up	Cash Five	Texas Two Step	Jackpot M	TH	Mega Millions	Jackpot T	F	Megaplier	MM Just the Jackpot	Daily 4	Daily 4 Sum It Up	Powerball	Jackpot W	S	Power Play	All or Nothing	Texas Triple Chance	Total	Per Cap.
9/2/2017*	66,786,499	0	1,882,138	7.75	8	407,969	4,127,448	87,462	745,315	757,964	225	250	1,839,333	45	53	546,532		1,675,002	88,460	3,160,562	53	68	527,201	510,296	226,818	83,368,998	2.99
9/9/2017	71,784,232	1894 (\$1.N); 1895 (\$3.N); 1896 (\$5.N); 1897 (\$10.N); 1898 (\$20.N) - 9/05/17	2,030,456	8.25	9	434,404	4,673,693	94,976	810,225	814,157	200	225	2,116,454	61	70	610,101		1,864,288	98,842	3,815,824	83	102	614,504	550,992	250,086	90,563,233	3.25
9/16/2017	72,628,393	0	2,072,973	9.5	10.25	441,815	4,761,239	95,625	803,128	1,009,847	275	400	2,218,181	76	86	632,423		1,969,938	107,496	4,120,318	115	132	647,273	549,860	248,976	92,507,685	3.32
9/23/2017	71,147,147	2000 (\$5.N); 1885 (\$10.N) - 9/18/17	2,083,698	10.75	11.5	444,009	4,652,157	91,944	799,261	958,113	550	200	2,417,135	94	104	676,790		1,999,292	111,399	3,062,637	40	53	505,638	554,074	245,596	89,748,889	3.22
9/30/2017	74,749,619	0	2,123,157	12	12.75	453,258	4,787,745	93,462	817,582	914,011	225	300	1,798,854	15	20	540,169		2,140,708	114,176	3,298,744	66	80	535,906	567,658	251,252	93,186,301	3.34
10/7/2017	78,134,381	1857 (\$1.N); 1871 (\$5.N); 2002 (\$20.N) - 10/02/17	2,158,233	13.5	14	461,982	4,884,513	93,622	837,916	1,157,363	425	575	1,859,000	25	30	555,420		2,086,885	112,246	3,678,352	94	112	585,624	570,242	255,884	97,431,662	3.50
10/14/2017	74,084,207	0	2,161,597	14.75	15.5	460,731	4,743,121	91,735	812,165	832,638	200	225	1,899,412	36	43	564,073		2,060,922	109,910	4,013,728	128	143	621,796	564,614	248,894	93,269,542	3.35
10/21/2017	77,631,892	2003 (\$2.N); 2004 (\$5.N); 1899 (\$50.N) - 10/16/17	2,191,085	16	16.75	466,612	4,682,503	94,156	810,073	1,008,511	300	425	1,677,423	15	20	505,340		2,117,469	116,022	4,422,740	156	173	670,007	563,200	248,496	97,205,528	3.49
10/28/2017	76,385,130	0	2,227,162	17.25	18.25	475,194	4,654,638	92,765	797,066	786,381	200	200	1,737,391	25	30	493,983	22,971	2,144,198	121,467	3,852,082	191	40	595,303	547,396	240,638	95,173,764	3.42
11/4/2017	78,814,323	0	2,333,965	18.75	19.25	494,349	4,926,697	96,245	820,269	887,674	225	275	2,753,000	40	48	421,360	112,668	2,205,239	114,585	3,078,822	52	64	500,061	571,658	248,038	98,378,952	3.53
11/11/2017	78,572,697	2005 (\$1.N); 2006 (\$3.N); 2007 (\$5.N); 2008 (\$10.N) - 11/06/17	2,315,922	19.75	20.5	490,024	4,901,274	94,521	817,975	894,972	400	200	2,652,012	59	71	410,066	62,832	2,069,360	110,879	3,183,712	75	90	507,890	563,738	242,264	97,890,137	3.51
11/18/2017	81,674,704	2085 (\$2.N); 1891 (\$5.N); 2011 (\$10.N) - 11/15/17	2,379,541	21.25	21.75	504,693	4,782,395	93,156	818,168	882,520	225	275	2,820,440	82	95	433,282	53,445	2,053,707	108,480	3,638,718	103	119	564,829	562,306	242,322	101,612,705	3.65
11/25/2017	84,916,870	0	2,353,671	22.5	23.25	504,985	4,590,443	87,556	779,967	1,056,541	400	525	2,980,136	106	119	452,693	45,225	1,908,926	99,032	3,780,406	134	149	582,194	522,808	223,942	104,885,393	3.76
12/2/2017	81,453,005	1862 (\$5.N) - 11/29/17	2,485,060	24	24.75	527,939	4,873,294	92,503	822,515	1,037,952	700	200	3,461,973	132	145	516,938	45,540	2,057,256	111,002	4,218,618	163	177	638,061	556,758	239,766	103,138,180	3.70
weekly change	-4.1%		5.6%			6.2%	5.7%	5.5%		-1.8%		16.2%		14.2%	0.7%	7.8%	12.1%	11.6%		9.6%	6.5%		7.1%			-1.7%	
SALES	SALES	SALES	SALES	SALES	SALES	SALES	SALES	SALES	SALES	SALES	SALES	SALES	SALES	SALES	SALES	SALES	SALES	SALES	SALES	SALES	SALES	SALES	SALES	SALES	SALES	SALES	% of Sales
Calendar Year to date	3,719,292,323		105,487,714			21,737,001	231,835,670	4,526,605	39,839,527	48,710,160			127,786,938			32,596,979	342,681	92,690,045	4,966,179	274,673,972			38,582,868	26,761,454	12,528,572	4,781,358,686	100.0%
Fiscal Year to date 2018	1,025,235,525		29,802,314			6,351,334	63,575,096	1,247,355	10,817,611	12,321,952			31,192,427			7,053,533	342,681	27,334,536	1,471,554	49,682,179			7,820,775	7,433,482	3,271,388	1,284,953,741	100.0%
*Full week includes 5 days from FY17																											