



*WEEKLY SALES SUMMARY*

Unaudited

[Week Ending: 12/03/2011](#)

Texas Lottery Commission  
Fiscal Year to Date Sales Comparison  
Unaudited

Through the week ending 12/03/2011 (14 weeks)

Sales by Game	FY 2010 *	FY 2011 **	FY 2012	\$ Change		% Change	
				FY 2012 to FY 2010	FY 2012 to FY 2011 to	FY 2012 to FY 2010	FY 2012 to FY 2011
Instants	\$ 711,803,347	\$ 693,820,295	\$ 715,114,366	\$ 3,311,019	\$ 21,294,071	0.5%	3.1%
Lotto Texas	76,188,530	44,333,667	45,681,645	-30,506,885	1,347,978	-40.0%	3.0%
Pick 3	70,554,460	70,475,272	67,730,675	-2,823,786	-2,744,597	-4.0%	-3.9%
Pick 3 Sum It Up	1,419,237	1,433,394	1,376,037	-43,200	-57,357	-3.0%	-4.0%
Cash Five	17,724,570	16,623,679	16,497,657	-1,226,913	-126,022	-6.9%	-0.8%
Texas Two Step	11,341,354	11,903,612	15,975,955	4,634,601	4,072,343	40.9%	34.2%
Mega Millions	49,454,817	33,648,790	35,400,406	-14,054,411	1,751,616	-28.4%	5.2%
Megaplier	11,216,184	7,617,191	8,094,572	-3,121,612	477,381	-27.8%	6.3%
Daily 4	13,507,561	14,562,079	15,880,292	2,372,731	1,318,213	17.6%	9.1%
Daily 4 Sum It Up	1,317,019	1,146,280	1,192,626	-124,393	46,346	-9.4%	4.0%
Powerball	-	22,692,823	33,267,624	33,267,624	10,574,801	-	-
Power Play	-	5,419,073	7,221,150	7,221,150	1,802,077	-	-
<b>Total</b>	<b>\$ 964,527,079</b>	<b>\$ 923,676,154</b>	<b>\$ 963,433,004</b>	<b>\$ -1,094,075</b>	<b>\$ 39,756,850</b>	<b>-0.1%</b>	<b>4.3%</b>

\* 2 extra days

\*\* 1 extra day

Texas Lottery Commission  
Fiscal Year to Date Cumulative Average Sales Comparison  
Unaudited

Through the week ending 12/03/2011 (14 weeks)

Sales by Game	FY 2010	FY 2011	FY 2012
Instant	\$ 7,414,618	\$ 7,303,372	\$ 7,607,600
Lotto Texas	793,631	466,670	485,975
Pick 3	734,942	741,845	720,539
Pick 3 Sum It Up	14,784	15,088	14,639
Cash Five	184,631	174,986	175,507
Texas Two Step	118,139	125,301	169,957
Mega Millions	515,154	354,198	376,600
Megaplier	116,835	80,181	86,112
Daily 4	140,704	153,285	168,939
Daily 4 Sum It Up	13,719	12,066	12,688
Powerball	-	238,872	353,911
Power Play	-	57,043	76,821
<b>Total</b>	<b>\$ 10,047,157</b>	<b>\$ 9,722,907</b>	<b>\$ 10,249,287</b>
	thru 12/05/2009 96 days	thru 12/04/2010 95 days	thru 12/03/2011 94 days

Texas Lottery Commission  
Fiscal Year Over Year Change in Sales  
Unaudited  
FY 2012 Compared to FY 2011

Week	FY 2012 Week Ending	INSTANT TICKETS				ON-LINE GAMES				TOTAL SALES			
		FY 2012	FY 2011	Difference	% change - Cumulative Sales	FY 2012	FY 2011	Difference	% change - Cumulative Sales	FY 2012	FY 2011	Difference	% change - Cumulative Sales
1	9/3/2011**	\$25,147,181	\$31,659,033	(\$6,511,852)	-20.6%	\$9,704,561	\$11,430,717	(\$1,726,156)	-15.1%	\$34,851,742	\$43,089,750	(\$8,238,008)	-19.1%
2	9/10/2011	\$50,591,068	\$48,912,598	\$1,678,470	3.4%	\$17,681,853	\$16,398,160	\$1,283,693	7.8%	\$68,272,921	\$65,310,758	\$2,962,163	4.5%
3	9/17/2011	\$49,835,063	\$48,988,241	\$846,822	1.7%	\$16,842,326	\$17,166,827	(\$324,501)	-1.9%	\$66,677,389	\$66,155,068	\$522,321	0.8%
4	9/24/2011	\$49,777,138	\$48,471,310	\$1,305,828	2.7%	\$17,504,800	\$15,623,813	\$1,880,987	12.0%	\$67,281,938	\$64,095,123	\$3,186,815	5.0%
5	10/1/2011	\$51,040,274	\$50,145,138	\$895,136	1.8%	\$18,653,100	\$16,453,939	\$2,199,161	13.4%	\$69,693,374	\$66,599,077	\$3,094,297	4.6%
6	10/8/2011	\$53,715,157	\$50,918,591	\$2,796,566	5.5%	\$17,225,680	\$16,974,963	\$250,717	1.5%	\$70,940,837	\$67,893,554	\$3,047,283	4.5%
7	10/15/2011	\$51,942,121	\$49,096,011	\$2,846,110	5.8%	\$17,854,980	\$16,661,904	\$1,193,077	7.2%	\$69,797,101	\$65,757,915	\$4,039,187	6.1%
8	10/22/2011	\$52,837,769	\$50,158,946	\$2,678,823	5.3%	\$19,558,519	\$17,374,460	\$2,184,060	12.6%	\$72,396,288	\$67,533,406	\$4,862,883	7.2%
9	10/29/2011	\$52,206,644	\$49,775,287	\$2,431,357	4.9%	\$21,504,565	\$18,402,209	\$3,102,356	16.9%	\$73,711,209	\$68,177,496	\$5,533,713	8.1%
10	11/5/2011	\$56,265,310	\$53,337,848	\$2,927,462	5.5%	\$20,870,086	\$17,321,908	\$3,548,179	20.5%	\$77,135,396	\$70,659,756	\$6,475,641	9.2%
11	11/12/2011	\$55,682,645	\$52,285,479	\$3,397,166	6.5%	\$17,862,404	\$16,388,690	\$1,473,714	9.0%	\$73,545,049	\$68,674,169	\$4,870,880	7.1%
12	11/19/2011	\$54,978,079	\$52,424,036	\$2,554,043	4.9%	\$17,879,985	\$16,138,022	\$1,741,963	10.8%	\$72,858,064	\$68,562,058	\$4,296,006	6.3%
13	11/26/2011	\$53,942,448	\$51,262,518	\$2,679,930	5.2%	\$16,877,145	\$15,967,075	\$910,070	5.7%	\$70,819,593	\$67,229,593	\$3,590,000	5.3%
14	12/3/2011	\$57,153,469	\$56,385,259	\$768,210	1.4%	\$18,298,636	\$17,553,175	\$745,461	4.2%	\$75,452,105	\$73,938,434	\$1,513,671	2.0%
15	12/10/2011		\$56,540,048				\$17,703,352				\$74,243,400		
16	12/17/2011		\$57,699,991				\$18,465,282				\$76,165,273		
17	12/24/2011		\$59,800,480				\$19,635,771				\$79,436,251		
18	12/31/2011		\$61,423,121				\$26,122,257				\$87,545,378		
19	1/7/2012		\$60,976,653				\$33,521,570				\$94,498,223		
20	1/14/2012		\$50,099,433				\$17,114,637				\$67,214,070		
21	1/21/2012		\$53,143,646				\$18,091,208				\$71,234,854		
22	1/28/2012		\$54,096,128				\$17,446,156				\$71,542,284		
23	2/4/2012		\$53,433,592				\$17,388,581				\$70,822,173		
24	2/11/2012		\$60,277,094				\$18,233,038				\$78,510,132		
25	2/18/2012		\$61,536,763				\$19,387,518				\$80,924,281		
26	2/25/2012		\$59,046,203				\$20,054,404				\$79,100,607		
27	3/3/2012		\$60,537,060				\$19,478,807				\$80,015,867		
28	3/10/2012		\$59,997,361				\$19,601,658				\$79,599,019		
29	3/17/2012		\$57,835,554				\$21,189,563				\$79,025,117		
30	3/24/2012		\$57,911,940				\$29,729,651				\$87,641,591		
31	3/31/2012		\$60,407,139				\$19,519,264				\$79,926,403		
32	4/7/2012		\$60,704,285				\$19,455,317				\$80,159,602		
33	4/14/2012		\$57,663,398				\$17,866,867				\$75,530,265		
34	4/21/2012		\$56,740,216				\$17,429,326				\$74,169,542		
35	4/28/2012		\$58,042,011				\$17,104,548				\$75,146,559		
36	5/5/2012		\$66,509,159				\$17,744,833				\$84,253,992		
37	5/12/2012		\$53,769,716				\$17,783,942				\$71,553,658		
38	5/19/2012		\$53,704,228				\$18,623,882				\$72,328,110		
39	5/26/2012		\$52,310,134				\$19,115,921				\$71,426,055		
40	6/2/2012		\$53,256,725				\$18,462,603				\$71,719,328		
41	6/9/2012		\$54,293,614				\$17,213,019				\$71,506,633		
42	6/16/2012		\$52,688,230				\$17,534,413				\$70,222,643		

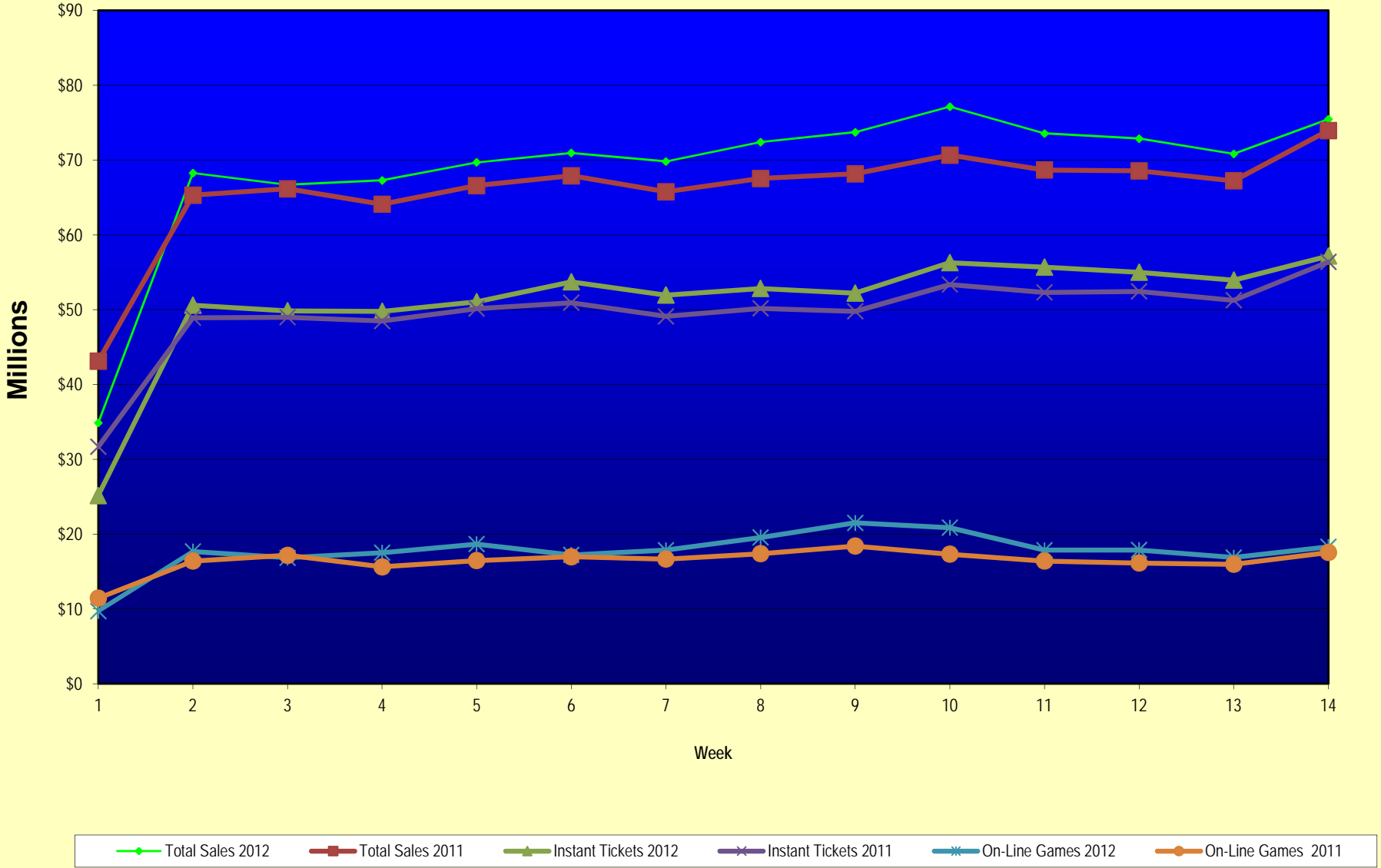
Note: Week 1 is not a full week of sales as this report is prepared on a Fiscal Year basis.

Texas Lottery Commission  
Fiscal Year Over Year Change in Sales  
Unaudited  
FY 2012 Compared to FY 2011

Week	FY 2012 Week Ending	INSTANT TICKETS				ON-LINE GAMES				TOTAL SALES			
		FY 2012	FY 2011	Difference	% change - Cumulative Sales	FY 2012	FY 2011	Difference	% change - Cumulative Sales	FY 2012	FY 2011	Difference	% change - Cumulative Sales
43	6/23/2012		\$53,174,595				\$17,086,937				\$70,261,532		
44	6/30/2012		\$53,687,509				\$18,406,785				\$72,094,294		
45	7/7/2012		\$53,054,685				\$16,211,989				\$69,266,674		
46	7/14/2012		\$51,161,290				\$16,945,733				\$68,107,023		
47	7/21/2012		\$50,807,750				\$17,362,213				\$68,169,963		
48	7/28/2012		\$51,277,179				\$18,870,764				\$70,147,943		
49	8/4/2012		\$53,320,489				\$20,922,034				\$74,242,523		
50	8/11/2012		\$50,914,022				\$19,467,124				\$70,381,146		
51	8/18/2012		\$49,905,898				\$17,419,045				\$67,324,943		
52	8/25/2012		\$49,424,242				\$16,837,474				\$66,261,716		
	8/31/2012		\$27,274,804				\$8,600,118				\$35,874,922		
Total thru Current Week		\$715,114,366	\$693,820,295	\$21,294,071	3.1%	\$248,318,638	\$229,855,859	\$18,462,779	8.0%	\$963,433,004	\$923,676,154	\$39,756,850	4.3%
Fiscal Year Total		\$715,114,366	\$2,842,266,680			\$248,318,638	\$969,003,455			\$963,433,004	\$3,811,270,135		

\*\* FY 2011 includes 4 days; FY 2012 includes 3 days

### Texas Lottery Commission Fiscal Year Over Year Change in Sales



Note: Week 1 is not a full week of sales as this report is prepared on a Fiscal Year basis.

Texas Lottery Commission  
**Instant Tickets by Price Point**  
Sales, Prize Expense, Sales Contribution and Payout Percentage With Year Over Year Changes  
Unaudited

Fiscal Year	Price Point	# of Active Games	FY Sales	% of Instant Ticket Sales	Year over Year Change in Sales	FY Prize Expense	Year over Year Change in Prize Expense	FY Sales Contribution	Year over Year Change in Contribution	Average Prize Payout %	Year over Year Change in Payout %
2011	\$1.00	24	48,985,115	7.1%		30,220,721		18,764,394		61.7%	2.7%
thru	\$2.00	25	103,309,946	14.9%		67,747,579		35,562,367		65.6%	0.7%
12/4/2010	\$3.00	16	83,917,955	12.1%		55,150,241		28,767,714		65.7%	0.2%
	\$5.00	32	220,968,495	31.8%		150,477,849		70,490,646		68.1%	0.1%
	\$7.00	6	30,301,334	4.4%		20,597,313		9,704,021		68.0%	0.0%
	\$10.00	12	90,665,870	13.1%		63,927,346		26,738,524		70.5%	0.8%
	\$20.00	5	91,028,980	13.1%		67,450,275		23,578,705		74.1%	1.3%
	\$50.00	2	24,642,600	3.6%		19,131,250		5,511,350		77.6%	4.1%
<b>Total</b>		<b>122</b>	<b>\$693,820,295</b>			<b>\$474,702,575</b>		<b>\$219,117,720</b>		<b>68.4%</b>	<b>1.0%</b>
2012	\$1.00	23	51,042,066	7.1%		31,311,995		19,730,071		61.3%	1.0%
thru	\$2.00	25	99,473,808	13.9%		64,688,119		34,785,689		65.0%	-0.8%
12/3/2011	\$3.00	14	89,281,758	12.5%		58,596,230		30,685,528		65.6%	0.1%
	\$5.00	31	220,858,565	30.9%		150,154,759		70,703,806		68.0%	0.1%
	\$7.00	4	16,643,039	2.3%		11,317,110		5,325,929		68.0%	0.0%
	\$10.00	13	117,403,830	16.4%		82,712,220		34,691,610		70.5%	-0.8%
	\$20.00	5	100,596,600	14.1%		75,037,600		25,559,000		74.6%	-0.1%
	\$50.00	1	19,814,700	2.8%		15,390,684		4,424,016		77.7%	0.1%
<b>Total</b>		<b>116</b>	<b>\$715,114,366</b>			<b>\$489,208,717</b>		<b>\$225,905,649</b>		<b>68.4%</b>	<b>-0.1%</b>
Variance	\$1.00	-1	2,056,951		4.2%	1,091,274	3.6%	965,677	5.1%	-0.35%	
2012 to	\$2.00	0	-3,836,138		-3.7%	-3,059,460	-4.5%	-776,678	-2.2%	-0.55%	
2011	\$3.00	-2	5,363,803		6.4%	3,445,989	6.2%	1,917,814	6.7%	-0.09%	
	\$5.00	-1	-109,930		0.0%	-323,090	-0.2%	213,160	0.3%	-0.11%	
	\$7.00	-2	-13,658,295		-45.1%	-9,280,203	-45.1%	-4,378,092	-45.1%	0.02%	
	\$10.00	1	26,737,960		29.5%	18,784,873	29.4%	7,953,087	29.7%	-0.06%	
	\$20.00	0	9,567,620		10.5%	7,587,325	11.2%	1,980,295	8.4%	0.49%	
	\$50.00	-1	-4,827,900		-19.6%	-3,740,567	-19.6%	-1,087,333	-19.7%	0.04%	
<b>Total</b>		<b>-6</b>	<b>\$21,294,071</b>		<b>3.1%</b>	<b>\$14,506,142</b>	<b>3.1%</b>	<b>\$6,787,929</b>	<b>3.1%</b>	<b>-0.01%</b>	

Notes - Instant Ticket Variances

Texas Lottery Commission  
**Instant Tickets by Price Point**  
**Sales, Prize Expense, Sales Contribution and Payout Percentage With Year Over Year Changes**  
 Unaudited

			FY 2012		FY 2011	Difference
Sales	\$1 - \$7		\$477,299,236		\$487,482,845	-\$10,183,609
Prize Exp.	\$1 - \$7		\$316,068,213		\$324,193,703	-\$8,125,490
Sales Cont.	\$1 - \$7		\$161,231,023		\$163,289,142	-\$2,058,119
Prize Exp. %	\$1 - \$7		66.2%		66.5%	-0.3%
			FY 2012		FY 2011	Difference
Sales	\$10 - \$50		\$237,815,130		\$206,337,450	\$31,477,680
Prize Exp.	\$10 - \$50		\$173,140,504		\$150,508,872	\$22,631,632
Sales Cont.	\$10 - \$50		\$64,674,626		\$55,828,578	\$8,846,048
Prize Exp. %	\$10 - \$50		72.8%		72.9%	-0.1%
			FY 2012		FY 2011	Difference
Sales	Instant		\$715,114,366		\$693,820,295	\$21,294,071
Prize Exp.	Instant		\$489,208,717		\$474,702,575	\$14,506,142
Sales Cont.	Instant		\$225,905,649		\$219,117,720	\$6,787,929
Prize Exp. %	Instant		68.4%		68.4%	0.0%

			FY 2012		FY 2011	Difference
Sales	\$1 - \$10		\$594,703,066		\$578,148,715	\$16,554,351
Prize Exp.	\$1 - \$10		\$398,780,433		\$388,121,049	\$10,659,383
Sales Cont.	\$1 - \$10		\$195,922,633		\$190,027,666	\$5,894,968
Prize Exp. %	\$1 - \$10		67.1%		67.1%	-0.1%
			FY 2012		FY 2011	Difference
Sales	\$20 - \$50		\$120,411,300		\$115,671,580	\$4,739,720
Prize Exp.	\$20 - \$50		\$90,428,284		\$86,581,526	\$3,846,758
Sales Cont.	\$20 - \$50		\$29,983,016		\$29,090,054	\$892,962
Prize Exp. %	\$20 - \$50		75.1%		74.9%	0.2%
			FY 2012		FY 2011	Difference
Sales	Instant		\$715,114,366		\$693,820,295	\$21,294,071
Prize Exp.	Instant		\$489,208,717		\$474,702,575	\$14,506,142
Sales Cont.	Instant		\$225,905,649		\$219,117,720	\$6,787,929
Prize Exp. %	Instant		68.4%		68.4%	0.0%



Texas Lottery Commission  
**Weekly Sales Summary**  
**& Comparison to Previous Week**  
 Unaudited

	Week Ending 12/03/2011		Week Ending 11/26/2011			
	<u>THIS WEEK</u>	% of Sales	<u>LAST WEEK</u>	% of Sales	<u>\$ change</u>	<u>% change</u>
Total Sales	<u>\$75,452,105</u>		<u>\$70,819,593</u>		<u>\$4,632,512</u>	6.54%
Instant Tickets	<u>\$57,153,469</u>	75.7%	<u>\$53,942,448</u>	76.2%	<u>\$3,211,021</u>	5.95%
Lotto	\$3,744,456	5.0%	\$3,499,908	4.9%	\$244,548	6.99%
Pick 3	\$5,267,602	7.0%	\$4,943,420	7.0%	\$324,182	6.56%
Pick 3 Sum It Up	\$108,544	0.1%	\$100,352	0.1%	\$8,192	8.16%
Cash Five	\$1,264,649	1.7%	\$1,179,174	1.7%	\$85,475	7.25%
Texas Two Step	\$938,225	1.2%	\$998,175	1.4%	-\$59,950	-6.01%
Mega Millions	\$2,830,996	3.8%	\$2,377,399	3.4%	\$453,597	19.08%
Megaplier	\$636,924	0.8%	\$555,760	0.8%	\$81,164	14.60%
Daily 4	\$1,278,857	1.7%	\$1,215,090	1.7%	\$63,767	5.25%
Daily 4 Sum It Up	\$95,379	0.1%	\$90,416	0.1%	\$4,963	5.49%
Powerball	\$1,708,763	2.3%	\$1,527,546	2.2%	\$181,217	11.86%
Power Play	\$424,242	0.6%	\$389,905	0.6%	\$34,337	8.81%
Total Online Sales	<u>\$18,298,636</u>		<u>\$16,877,145</u>		<u>\$1,421,491</u>	8.42%

\* Totals may not sum due to rounding.

Texas Lottery Commission  
Weekly Sales Summary  
Unaudited

INSTANT TICKETS  
TOP TEN SELLING GAMES

For the Week Ending : 12/03/11

Rank	Price Point	Game	Sales (Millions)
1	\$ 20	MERRY MILLIONAIRE	\$ 3.409
2	\$ 10	SEASON'S GREETINGS	\$ 3.279
3	\$ 5	SILVER BELLS	\$ 3.079
4	\$ 20	\$500,000,000 FRENZY	\$ 2.858
5	\$ 5	CASH BLAST	\$ 2.740
6	\$ 5	MEGA MONEY	\$ 2.403
7	\$ 3	MERRY CROSSWORD	\$ 2.256
8	\$ 10	20X THE MONEY	\$ 2.224
9	\$ 3	LOTERIA	\$ 1.757
10	\$ 5	\$100,000 EXTREME CASH	\$ 1.728

Texas Lottery Commission  
Prize Payout Tracking Report  
Unaudited

Through Week Ending 12/03/11

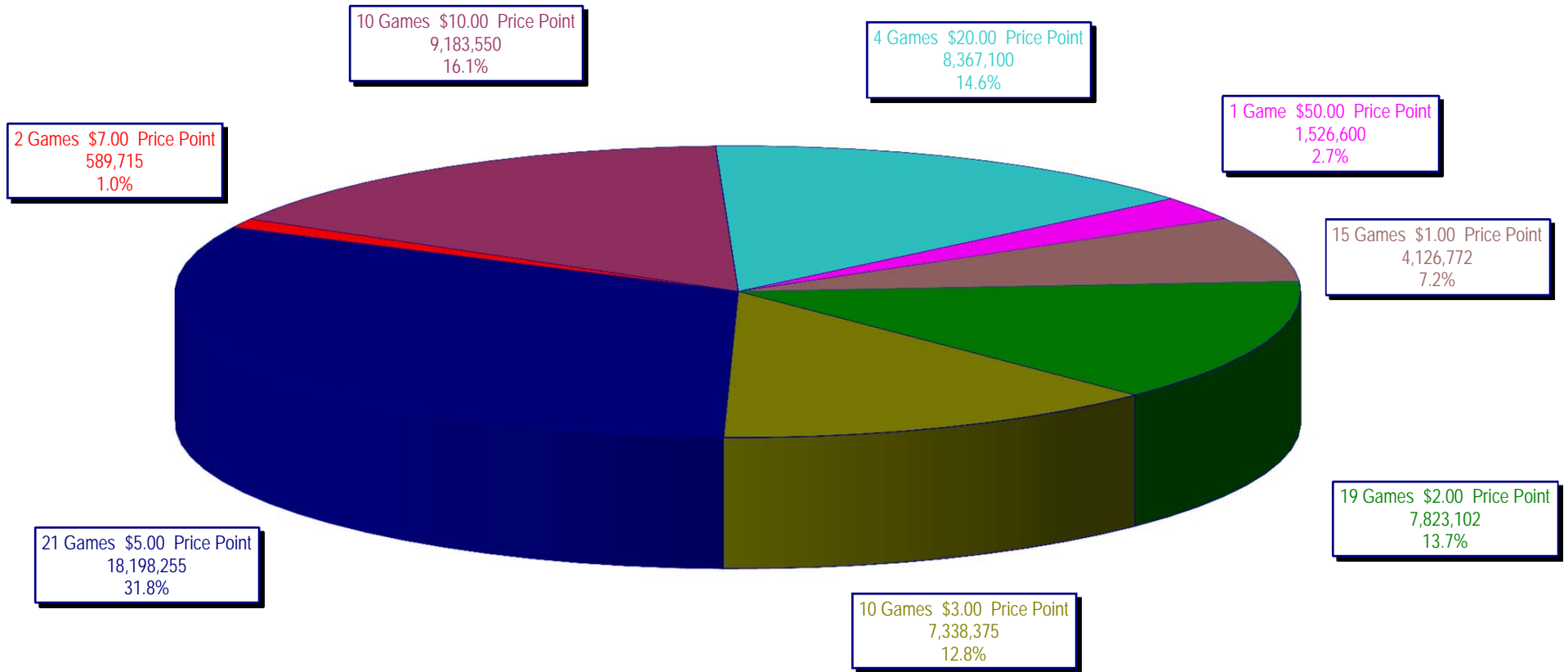
On-Line Sales

		FY Sales Through Week Ending 12/3/2011		FY Prize Expense Through Week Ending 12/3/2011	Actual* Prize Payout	Base Payout (Prize Pool)
Lotto	\$	45,681,645	\$	26,415,875	57.83%	50.00%
Pick 3		67,730,675		29,864,200	44.09%	50.00%
Pick 3 Sum It Up		1,376,037		610,727	44.38%	50.00%
Cash Five		16,497,657		8,248,825	50.00%	50.00%
Texas Two Step		15,975,955		8,046,730	50.37%	50.00%
Mega Millions		35,400,406		17,062,278	48.20%	50.00%**
Megaplier		8,094,572		4,718,551	58.29%	N/A
Daily 4		15,880,292		7,649,525	48.17%	50.00%
Daily 4 Sum It Up		1,192,626		479,885	40.24%	50.00%
Powerball		33,267,624		16,781,113	50.44%	50.00%**
Power Play		7,221,150		3,651,200	50.56%	N/A
<b>Totals</b>	\$	<b>248,318,638</b>	\$	<b>123,528,909</b>	<b>49.75%</b>	

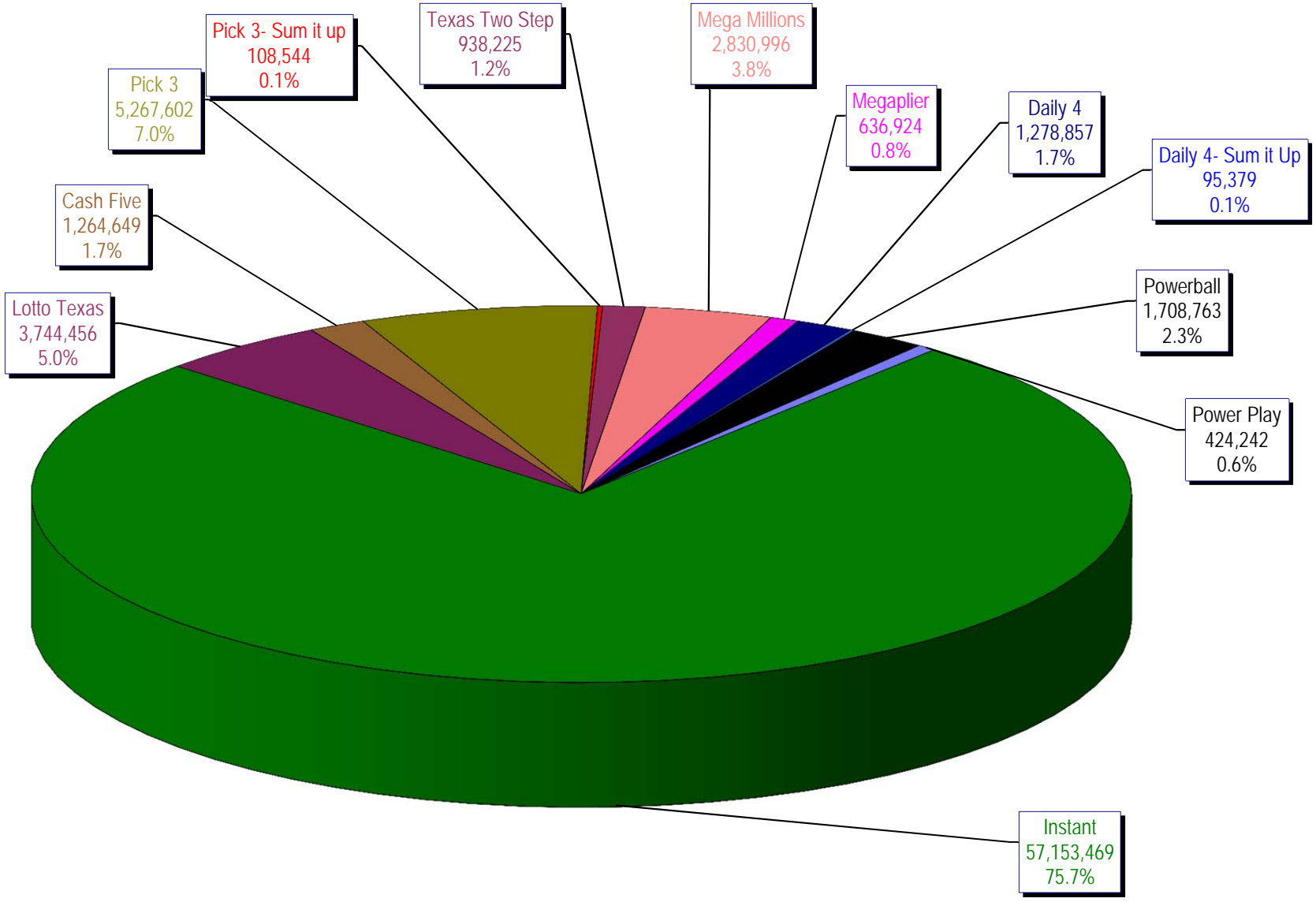
\* Before Unclaimed Prizes

\*\* Estimated; depends on # of guaranteed prizes won in Texas

Texas Lottery Commission  
Instant Ticket Sales  
For the Week Ending 12/03/11  
(Unaudited)



**Texas Lottery Commission  
All Game Sales  
For the Week Ending 12/03/11  
(Unaudited)**



Texas Lottery Commission - Weekly Sales Summary for FY 2012 (Unaudited)

Week Ended	Instant Games	New Games & Dates	Lotto Texas	Jackpot W S		Pick 3	Pick 3 Sum It Up	Cash Five	Texas Two Step	Jackpot M TH		Mega Millions	Jackpot T F		Megaplier	Daily 4	Daily 4 Sum It Up	Powerball	Jackpot W S		Power Play	Total	Per Cap.
9/3/2011	52,421,985	1340 (\$1,N); 1310 (\$2, N) - 08/29/11	3,710,974	23	24	5,228,940	100,997	1,239,134	989,988	225	300	2,248,664	21	29	539,246	1,221,178	93,318	2,401,555	75	91	530,686	70,726,664	2.81
9/10/2011	50,591,068	1360 (\$3, N) - 09/05/11	3,329,350	25	4	5,103,026	99,259	1,198,563	935,771	450	200	2,387,766	37	44	557,225	1,180,505	88,443	2,295,315	107	20	506,631	68,272,921	2.71
9/17/2011	49,835,063	0	3,031,798	5	6	4,953,079	100,990	1,210,562	961,592	225	300	2,801,526	54	65	626,459	1,125,230	83,532	1,560,522	25	20	387,037	66,677,389	2.64
9/24/2011	49,777,138	1362(\$1,N); 1363(5,N); 1364(\$5,N) - 09/19/11	3,083,973	7	8	4,819,453	97,999	1,200,444	1,283,472	450	600	3,206,022	75	86	692,909	1,092,294	82,198	1,561,655	25	30	384,383	67,281,938	2.67
10/1/2011	51,040,274	1365(\$2,N) - 09/26/11	3,196,730	9	10	4,846,896	97,026	1,215,715	1,146,613	800	200	4,033,330	96	113	830,660	1,096,271	83,993	1,693,809	37	47	412,058	69,693,374	2.76
10/8/2011	53,715,157	1366(\$1,N) - 10/03/11	3,231,892	11	12	5,064,771	102,919	1,252,733	1,004,251	225	300	2,176,684	12	14	527,777	1,188,636	92,825	2,103,034	58	71	480,159	70,940,837	2.81
10/15/2011	51,942,121	1367 (\$7, N) - 10/10/11	3,230,925	13	14	4,776,985	99,008	1,214,385	1,337,436	450	625	2,260,036	22	30	542,787	1,132,415	84,772	2,613,215	86	105	563,017	69,797,101	2.77
10/22/2011	52,837,769	1369 (\$1, N); 1370 (\$5, N) - 10/17/11	3,250,317	15	16	4,784,201	98,306	1,202,768	1,887,302	825	1,050	2,386,255	39	48	561,705	1,130,353	83,722	3,477,867	124	148	695,724	72,396,288	2.87
10/29/2011	52,206,644	1371 (\$2, N) - 10/24/11	3,302,201	17	18	4,685,786	95,887	1,186,987	2,055,399	1,300	1,550	2,592,752	57	67	596,631	1,107,441	82,921	4,895,300	173	203	903,261	73,711,209	2.92
11/5/2011	56,265,310	1373 (\$10, N) - 10/31/11	3,570,825	19	20	5,165,835	105,793	1,240,514	910,036	200	200	2,497,308	78	12	583,481	1,222,706	92,619	4,617,172	245	20	863,799	77,135,396	3.06
11/12/2011	55,682,645	1375 (\$3, N); 1374 (\$1, N) - 11/07/11	3,673,137	21	22	5,298,645	109,575	1,268,630	961,349	225	200	2,362,698	15	22	552,133	1,235,272	92,025	1,861,697	25	35	447,243	73,545,049	2.92
11/19/2011	54,978,079	1376(\$2, N); 1377 (\$5, N) - 11/14/11	3,575,231	23	24	5,216,095	106,956	1,246,366	1,059,355	225	325	2,300,050	30	40	550,825	1,224,365	89,978	2,033,222	46	60	477,542	72,858,064	2.89
11/26/2011	53,942,448	1372 (\$5, N) - 11/21/11	3,499,908	25	26	4,943,420	100,352	1,179,174	998,175	500	200	2,377,399	47	55	555,760	1,215,090	90,416	1,527,546	20	25	389,905	70,819,593	2.81
12/3/2011	57,153,469	0	3,744,456	27	28	5,267,602	108,544	1,264,649	938,225	225	200	2,830,996	64	75	636,924	1,278,857	95,379	1,708,763	31	40	424,242	75,452,105	2.99
weekly change	6.0%		7.0%			6.6%	8.2%	7.2%	-6.0%			19.1%			14.6%	5.2%	5.5%	11.9%			8.8%	6.5%	
	<b>SALES</b>		<b>SALES</b>			<b>SALES</b>	<b>SALES</b>	<b>SALES</b>	<b>SALES</b>			<b>SALES</b>	<b>SALES</b>	<b>SALES</b>	<b>SALES</b>	<b>SALES</b>	<b>SALES</b>	<b>SALES</b>			<b>SALES</b>	<b>SALES</b>	<b>% of Sales</b>
Startup to date	42,590,472,568		10,953,687,704			4,195,090,996	24,679,369	2,337,406,318	593,810,422			1,520,832,131			348,229,743	216,882,980	24,162,066	189,659,508			43,484,495	63,246,532,271	100.0%
Calendar Year to date	2,635,575,901		162,241,178			251,459,311	123,957	59,830,996	50,577,706			155,609,243			33,575,973	55,735,639	4,146,260	106,718,016			23,668,225	3,539,262,404	100.0%
Fiscal Year to date 2012	715,114,366		45,681,645			67,730,675	1,376,037	16,497,657	15,975,955			35,400,406			8,094,572	15,880,292	1,192,626	33,267,624			7,221,150	963,433,004	100.0%