



*WEEKLY SALES SUMMARY*

Unaudited

**Week Ending: 12/03/2016**

Texas Lottery Commission  
Fiscal Year to Date Sales Comparison  
Unaudited

Through the Week Ending 12/03/2016 (14 Weeks)

Sales by Game	FY 2015 *	FY 2016 **	FY 2017	\$ Change		% Change	
				FY 2017 to FY 2015	FY 2017 to FY 2016	FY 2017 to FY 2015	FY 2017 to FY 2016
Scratch Tickets	\$ 867,115,719	\$ 895,520,618	\$ 938,338,916	\$ 71,223,197	\$ 42,818,298	8.2%	4.8%
Lotto Texas	31,888,389	33,506,413	28,501,518	-3,386,871	-5,004,895	-10.6%	-14.9%
Lotto Extra	4,811,882	5,650,801	5,449,654	637,772	-201,147	13.3%	-3.6%
Pick 3	66,241,005	66,241,271	62,947,283	-3,293,722	-3,293,988	-5.0%	-5.0%
Pick 3 Sum It Up	1,270,864	1,327,446	1,201,519	-69,346	-125,927	-5.5%	-9.5%
Cash Five	13,226,508	12,293,085	11,274,117	-1,952,391	-1,018,968	-14.8%	-8.3%
Texas Two Step	15,384,080	14,027,454	13,102,562	-2,281,518	-924,892	-14.8%	-6.6%
Mega Millions	42,367,219	33,479,980	26,532,194	-15,835,025	-6,947,786	-37.4%	-20.8%
Megaplier	9,603,733	8,358,855	7,324,288	-2,279,445	-1,034,567	-23.7%	-12.4%
Daily 4	22,236,077	22,709,759	23,314,381	1,078,305	604,623	4.8%	2.7%
Daily 4 Sum It Up	1,338,343	1,174,605	1,220,216	-118,127	45,611	-8.8%	3.9%
Powerball	46,307,335	52,724,200	61,328,827	15,021,492	8,604,627	32.4%	16.3%
Power Play	6,042,999	6,906,016	8,519,497	2,476,498	1,613,481	41.0%	23.4%
All or Nothing	10,506,874	8,327,188	7,497,752	-3,009,122	-829,436	-28.6%	-10.0%
Monopoly	2,414,870	-	-	-2,414,870	-	-100.0%	-
Texas Triple Chance	-	7,109,661	4,149,178	4,149,178	-2,960,483	-	-41.6%
<b>Total</b>	<b>\$ 1,140,755,896</b>	<b>\$ 1,169,357,350</b>	<b>\$ 1,200,701,901</b>	<b>\$ 59,946,006</b>	<b>\$ 31,344,551</b>	<b>5.3%</b>	<b>2.7%</b>

\* 3 extra days

\*\* 2 extra days

Texas Lottery Commission  
Fiscal Year to Date Cumulative Average Sales Comparison  
Unaudited

Through the Week Ending 12/03/2016 (14 Weeks)

Sales by Game	FY 2015	FY 2016	FY 2017
Scratch Tickets	\$ 8,939,337	\$ 9,328,340	\$ 9,982,329
Lotto Texas	328,746	349,025	303,208
Lotto Extra	49,607	58,863	57,975
Pick 3	682,897	690,013	669,652
Pick 3 Sum It Up	13,102	13,828	12,782
Cash Five	136,356	128,053	119,937
Texas Two Step	158,599	146,119	139,389
Mega Millions	436,775	348,750	282,257
Megaplier	99,008	87,071	77,918
Daily 4	229,238	236,560	248,025
Daily 4 Sum It Up	13,797	12,235	12,981
Powerball	477,395	549,210	652,434
Power Play	62,299	71,938	90,633
All or Nothing	108,318	86,742	79,763
Monopoly	** 49,283	-	-
Texas Triple Chance	- *	101,567	44,140
<b>Total</b>	<b>\$ 11,784,758</b>	<b>\$ 12,208,313</b>	<b>\$ 12,773,424</b>

thru 12/06/2014

97 days

\*\* 49 days

thru 12/05/2015

96 days

\* 70 days

thru 12/03/2016

94 days

Texas Lottery Commission  
Fiscal Year Over Year Change in Sales  
Unaudited  
FY 2017 Compared to FY 2016

			SCRATCH TICKETS				DRAW GAMES				TOTAL SALES			
FY 2017			FY 2017	FY 2016	Difference	% change - Cumulative Sales	FY 2017	FY 2016	Difference	% change - Cumulative Sales	FY 2017	FY 2016	Difference	% change - Cumulative Sales
Week	Week Ending													
1	9/3/2016 *		\$32,980,266	\$49,534,249	(\$16,553,983)	-33.4%	\$10,218,656	\$17,091,724	(\$6,873,068)	-40.2%	\$43,198,922	\$66,625,973	(\$23,427,051)	-35.2%
2	9/10/2016		\$65,952,418	\$61,566,291	\$4,386,127	7.1%	\$19,635,377	\$20,630,922	(\$995,545)	-4.8%	\$85,587,795	\$82,197,213	\$3,390,583	4.1%
3	9/17/2016		\$66,196,270	\$63,530,657	\$2,665,613	4.2%	\$20,915,290	\$20,327,253	\$588,037	2.9%	\$87,111,560	\$83,857,910	\$3,253,650	3.9%
4	9/24/2016		\$64,383,005	\$61,731,400	\$2,651,605	4.3%	\$17,451,165	\$22,252,290	(\$4,801,125)	-21.6%	\$81,834,170	\$83,983,690	(\$2,149,520)	-2.6%
5	10/1/2016		\$67,349,951	\$67,048,415	\$301,536	0.4%	\$17,519,852	\$25,436,791	(\$7,916,939)	-31.1%	\$84,869,803	\$92,485,206	(\$7,615,403)	-8.2%
6	10/8/2016		\$71,598,690	\$66,049,706	\$5,548,984	8.4%	\$18,211,107	\$18,138,977	\$72,130	0.4%	\$89,809,797	\$84,188,683	\$5,621,114	6.7%
7	10/15/2016		\$69,444,762	\$65,073,593	\$4,371,169	6.7%	\$18,075,261	\$17,776,414	\$298,847	1.7%	\$87,520,023	\$82,850,007	\$4,670,016	5.6%
8	10/22/2016		\$69,317,066	\$64,087,437	\$5,229,629	8.2%	\$18,422,336	\$18,450,464	(\$28,128)	-0.2%	\$87,739,402	\$82,537,901	\$5,201,501	6.3%
9	10/29/2016		\$69,729,599	\$66,025,374	\$3,704,225	5.6%	\$18,535,248	\$19,568,150	(\$1,032,902)	-5.3%	\$88,264,847	\$85,593,524	\$2,671,324	3.1%
10	11/5/2016		\$73,451,702	\$68,137,192	\$5,314,510	7.8%	\$20,151,939	\$20,398,351	(\$246,413)	-1.2%	\$93,603,641	\$88,535,543	\$5,068,098	5.7%
11	11/12/2016		\$70,998,320	\$65,449,428	\$5,548,892	8.5%	\$19,925,460	\$20,169,382	(\$243,923)	-1.2%	\$90,923,780	\$85,618,810	\$5,304,970	6.2%
12	11/19/2016		\$75,265,196	\$68,364,421	\$6,900,775	10.1%	\$21,424,637	\$17,174,606	\$4,250,031	24.7%	\$96,689,833	\$85,539,027	\$11,150,806	13.0%
13	11/26/2016		\$68,983,157	\$61,091,628	\$7,891,529	12.9%	\$24,223,331	\$17,168,993	\$7,054,338	41.1%	\$93,206,488	\$78,260,621	\$14,945,867	19.1%
14	12/3/2016		\$72,688,514	\$67,830,827	\$4,857,687	7.2%	\$17,653,328	\$19,252,418	(\$1,599,090)	-8.3%	\$90,341,842	\$87,083,245	\$3,258,597	3.7%
15	12/10/2016			\$68,324,452				\$19,529,408				\$87,853,860		
16	12/17/2016			\$71,041,258				\$20,824,840				\$91,866,098		
17	12/24/2016			\$78,125,965				\$22,586,417				\$100,712,382		
18	12/31/2016			\$76,712,975				\$27,972,880				\$104,685,855		
19	1/7/2017			\$77,136,541				\$127,289,478				\$204,426,019		
20	1/14/2017			\$73,858,865				\$140,104,126				\$213,962,991		
21	1/21/2017			\$70,665,700				\$20,781,745				\$91,447,445		
22	1/28/2017			\$71,051,685				\$20,433,401				\$91,485,086		
23	2/4/2017			\$78,458,428				\$21,274,800				\$99,733,228		
24	2/11/2017			\$80,754,850				\$21,391,919				\$102,146,769		
25	2/18/2017			\$80,078,271				\$21,911,382				\$101,989,653		
26	2/25/2017			\$78,832,217				\$22,823,086				\$101,655,303		
27	3/4/2017			\$80,019,524				\$23,146,906				\$103,166,430		
28	3/11/2017			\$78,524,214				\$19,311,625				\$97,835,839		
29	3/18/2017			\$75,446,960				\$18,001,000				\$93,447,960		
30	3/25/2017			\$75,293,759				\$18,553,964				\$93,847,723		
31	4/1/2017			\$79,316,221				\$19,482,563				\$98,798,784		
32	4/8/2017			\$74,560,898				\$20,100,629				\$94,661,527		
33	4/15/2017			\$74,056,586				\$20,677,413				\$94,733,999		
34	4/22/2017			\$73,110,080				\$20,313,339				\$93,423,419		
35	4/29/2017			\$73,448,019				\$22,666,626				\$96,114,645		
36	5/6/2017			\$77,593,399				\$33,262,968				\$110,856,367		
37	5/13/2017			\$75,263,676				\$20,250,149				\$95,513,825		
38	5/20/2017			\$74,274,808				\$19,605,983				\$93,880,791		
39	5/27/2017			\$71,562,728				\$20,150,232				\$91,712,960		
40	6/3/2017			\$73,085,109				\$21,067,550				\$94,152,659		
41	6/10/2017			\$70,593,768				\$21,389,794				\$91,983,562		
42	6/17/2017			\$69,501,864				\$22,402,713				\$91,904,577		

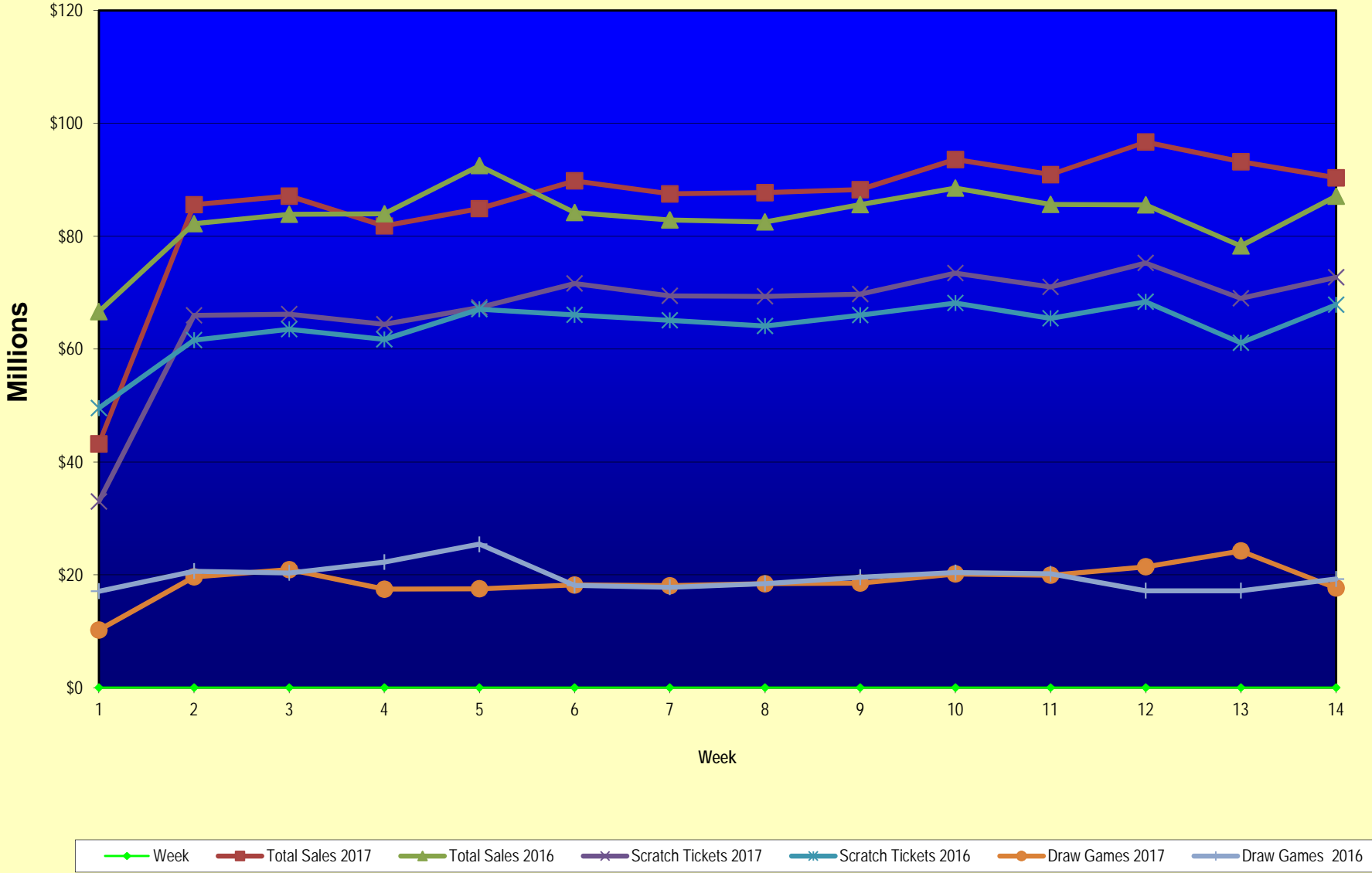
Texas Lottery Commission  
Fiscal Year Over Year Change in Sales  
Unaudited  
FY 2017 Compared to FY 2016

			SCRATCH TICKETS				DRAW GAMES				TOTAL SALES			
FY 2017														
Week	Week	Ending	FY 2017	FY 2016	Difference	% change - Cumulative Sales	FY 2017	FY 2016	Difference	% change - Cumulative Sales	FY 2017	FY 2016	Difference	% change - Cumulative Sales
43	6/24/2017			\$69,243,660				\$24,290,311				\$93,533,971		
44	7/1/2017			\$70,782,313				\$29,331,406				\$100,113,719		
45	7/8/2017			\$67,636,625				\$38,673,314				\$106,309,939		
46	7/15/2017			\$68,064,720				\$21,311,938				\$89,376,658		
47	7/22/2017			\$69,509,821				\$21,982,689				\$91,492,510		
48	7/29/2017			\$64,486,970				\$30,699,953				\$95,186,923		
49	8/5/2017			\$69,206,183				\$18,277,075				\$87,483,258		
50	8/12/2017			\$67,165,060				\$18,101,640				\$85,266,700		
51	8/19/2017			\$69,067,938				\$18,981,681				\$88,049,619		
52	8/26/2017			\$67,821,162				\$19,606,571				\$87,427,733		
	8/31/2017 **			\$36,609,542				\$9,310,254				\$45,919,796		
Total thru Current Week			\$938,338,916	\$895,520,618	\$42,818,298	4.8%	\$262,362,985	\$273,836,732	(\$11,473,747)	-4.2%	\$1,200,701,901	\$1,169,357,350	\$31,344,551	2.7%
Fiscal Year Total			\$938,338,916	\$3,715,807,432			\$262,362,985	\$1,351,710,491			\$1,200,701,901	\$5,067,517,923		

\* FY 17 includes 3 days; FY 16 includes 5 days

\*\* FY 17 includes 5 days; FY 16 includes 4 days

### Texas Lottery Commission Fiscal Year Over Year Change in Sales



Note: Week 1 is not a full week of sales as this report is prepared on a Fiscal Year basis.

Texas Lottery Commission  
Scratch Tickets by Price Point  
Sales, Prize Expense, Sales Contribution and Payout Percentage With Year Over Year Changes  
Unaudited

Fiscal Year	Price Point	# of Active Games	FY Sales	% of Scratch Ticket Sales	Year over Year Change in Sales	FY Prize Expense	Year over Year Change in Prize Expense	FY Sales Contribution	Year over Year Change in Contribution	Average Prize Payout %	Year over Year Change in Payout %
2016	\$1.00	13	39,648,588	4.4%		24,021,382		15,627,206		60.6%	0.1%
Through	\$2.00	25	88,959,770	9.9%		57,890,268		31,069,502		65.1%	-0.6%
12/5/2015	\$3.00	9	77,649,825	8.7%		51,094,612		26,555,213		65.8%	-0.2%
	\$5.00	40	285,866,035	31.9%		194,213,759		91,652,276		67.9%	0.0%
	\$10.00	14	179,346,160	20.0%		125,660,186		53,685,974		70.1%	-0.3%
	\$20.00	9	179,893,140	20.1%		134,815,357		45,077,783		74.9%	0.0%
	\$50.00	3	44,157,100	4.9%		34,342,524		9,814,576		77.8%	0.0%
<b>Total</b>		<b>113</b>	<b>\$895,520,618</b>			<b>\$622,038,088</b>		<b>\$273,482,530</b>		<b>69.5%</b>	<b>0.0%</b>
2017	\$1.00	17	37,449,508	4.0%		22,682,561		14,766,947		60.6%	0.6%
Through	\$2.00	22	79,210,488	8.4%		51,631,591		27,578,897		65.2%	0.0%
12/3/2016	\$3.00	8	64,856,595	6.9%		42,754,176		22,102,419		65.9%	0.0%
	\$5.00	41	296,960,445	31.6%		201,759,838		95,200,607		67.9%	0.0%
	\$10.00	16	192,255,420	20.5%		135,768,481		56,486,939		70.6%	0.6%
	\$20.00	11	220,669,360	23.5%		165,348,719		55,320,641		74.9%	0.0%
	\$50.00	4	46,937,100	5.0%		36,523,978		10,413,122		77.8%	0.0%
<b>Total</b>		<b>119</b>	<b>\$938,338,916</b>			<b>\$656,469,345</b>		<b>\$281,869,571</b>		<b>70.0%</b>	<b>0.6%</b>
Variance	\$1.00	4	-2,199,080		-5.5%	-1,338,821	-5.6%	-860,259	-5.5%	-0.02%	
2017 to	\$2.00	-3	-9,749,282		-11.0%	-6,258,677	-10.8%	-3,490,605	-11.2%	0.11%	
2016	\$3.00	-1	-12,793,230		-16.5%	-8,340,435	-16.3%	-4,452,795	-16.8%	0.12%	
	\$5.00	1	11,094,410		3.9%	7,546,079	3.9%	3,548,331	3.9%	0.00%	
	\$10.00	2	12,909,260		7.2%	10,108,295	8.0%	2,800,965	5.2%	0.55%	
	\$20.00	2	40,776,220		22.7%	30,533,362	22.6%	10,242,858	22.7%	-0.01%	
	\$50.00	1	2,780,000		6.3%	2,181,454	6.4%	598,546	6.1%	0.04%	
<b>Total</b>		<b>6</b>	<b>\$42,818,298</b>		<b>4.8%</b>	<b>\$34,431,257</b>	<b>5.5%</b>	<b>\$8,387,041</b>	<b>3.1%</b>	<b>0.50%</b>	

Notes - Scratch Ticket Variances

Texas Lottery Commission  
Scratch Tickets by Price Point  
Sales, Prize Expense, Sales Contribution and Payout Percentage With Year Over Year Changes  
Unaudited

		FY 2017		FY 2016		Difference
Sales	\$1 - \$5	\$478,477,036		\$492,124,218		-\$13,647,182
Prize Exp.	\$1 - \$5	\$318,828,166		\$327,220,021		-\$8,391,855
Sales Cont.	\$1 - \$5	\$159,648,870		\$164,904,197		-\$5,255,327
Prize Exp. %	\$1 - \$5	66.6%		66.5%		0.1%
		FY 2017		FY 2016		Difference
Sales	\$10 - \$50	\$459,861,880		\$403,396,400		\$56,465,480
Prize Exp.	\$10 - \$50	\$337,641,178		\$294,818,066		\$42,823,112
Sales Cont.	\$10 - \$50	\$122,220,702		\$108,578,334		\$13,642,368
Prize Exp. %	\$10 - \$50	73.4%		73.1%		0.3%
		FY 2017		FY 2016		Difference
Sales	Scratch	\$938,338,916		\$895,520,618		\$42,818,298
Prize Exp.	Scratch	\$656,469,345		\$622,038,088		\$34,431,257
Sales Cont.	Scratch	\$281,869,571		\$273,482,530		\$8,387,041
Prize Exp. %	Scratch	70.0%		69.5%		0.5%

		FY 2017		FY 2016		Difference
Sales	\$1 - \$10	\$670,732,456		\$671,470,378		-\$737,922
Prize Exp.	\$1 - \$10	\$454,596,648		\$452,880,208		\$1,716,440
Sales Cont.	\$1 - \$10	\$216,135,808		\$218,590,170		-\$2,454,362
Prize Exp. %	\$1 - \$10	67.8%		67.4%		0.3%
		FY 2017		FY 2016		Difference
Sales	\$20 - \$50	\$267,606,460		\$224,050,240		\$43,556,220
Prize Exp.	\$20 - \$50	\$201,872,697		\$169,157,880		\$32,714,817
Sales Cont.	\$20 - \$50	\$65,733,763		\$54,892,360		\$10,841,403
Prize Exp. %	\$20 - \$50	75.4%		75.5%		-0.1%
		FY 2017		FY 2016		Difference
Sales	Scratch	\$938,338,916		\$895,520,618		\$42,818,298
Prize Exp.	Scratch	\$656,469,345		\$622,038,088		\$34,431,257
Sales Cont.	Scratch	\$281,869,571		\$273,482,530		\$8,387,041
Prize Exp. %	Scratch	70.0%		69.5%		0.5%



Texas Lottery Commission  
**Weekly Sales Summary**  
**& Comparison to Previous Week**  
 Unaudited

	Week Ending 12/03/2016	% of Sales	Week Ending 11/26/2016	% of Sales	\$ change	% change
	<u>THIS WEEK</u>		<u>LAST WEEK</u>			
Total Sales	<u>\$90,341,842</u>		<u>\$93,206,488</u>		<u>-\$2,864,646</u>	-3.07%
Scratch Tickets	<u>\$72,688,514</u>	80.5%	<u>\$68,983,157</u>	74.0%	<u>\$3,705,357</u>	5.37%
Lotto	\$1,989,472	2.2%	\$1,945,264	2.1%	\$44,208	2.27%
Lotto Extra	\$386,573	0.4%	\$383,703	0.4%	\$2,870	0.75%
Pick 3	\$4,901,443	5.4%	\$4,472,018	4.8%	\$429,425	9.60%
Pick 3 Sum It Up	\$91,365	0.1%	\$83,761	0.1%	\$7,604	9.08%
Cash Five	\$857,900	0.9%	\$795,696	0.9%	\$62,204	7.82%
Texas Two Step	\$1,002,319	1.1%	\$737,931	0.8%	\$264,388	35.83%
Mega Millions	\$1,761,923	2.0%	\$1,698,370	1.8%	\$63,553	3.74%
Megaplier	\$499,193	0.6%	\$487,160	0.5%	\$12,033	2.47%
Daily 4	\$1,823,528	2.0%	\$1,649,794	1.8%	\$173,735	10.53%
Daily 4 Sum It Up	\$94,278	0.1%	\$84,195	0.1%	\$10,083	11.98%
Powerball	\$2,932,322	3.2%	\$9,839,524	10.6%	-\$6,907,202	-70.20%
Power Play	\$444,551	0.5%	\$1,235,062	1.3%	-\$790,511	-64.01%
All or Nothing	\$569,036	0.6%	\$527,328	0.6%	\$41,708	7.91%
Texas Triple Chance	\$299,426	0.3%	\$283,526	0.3%	\$15,900	5.61%
Total Draw Game Sales	<u>\$17,653,328</u>		<u>\$24,223,331</u>		<u>-\$6,570,003</u>	-27.12%

\* Totals may not sum due to rounding.

Texas Lottery Commission  
Weekly Sales Summary  
Unaudited

SCRATCH TICKETS  
TOP TEN SELLING GAMES

For the week ending: 12/03/2016

Rank	Price Point	Game	Sales (Millions)
1	\$ 10	\$1 MILLION HIGH ROLLER	\$ 4.615
2	\$ 10	HOLIDAY COUNTDOWN SUPER TICKET	\$ 4.251
3	\$ 20	100X THE CASH	\$ 3.491
4	\$ 5	SUPER LOTERIA	\$ 3.278
5	\$ 20	SUPER BREAK THE BANK	\$ 3.193
6	\$ 50	\$7,500,000 ULTIMATE CASH	\$ 3.174
7	\$ 5	WILD CASH BONANZA	\$ 2.529
8	\$ 10	\$200 MILLION PAYOUT	\$ 2.518
9	\$ 5	GARLAND RICHES	\$ 2.478
10	\$ 5	GOLDEN TICKET	\$ 2.234

Texas Lottery Commission  
Prize Payout Tracking Report  
Unaudited

Through the week ending: 12/03/2016

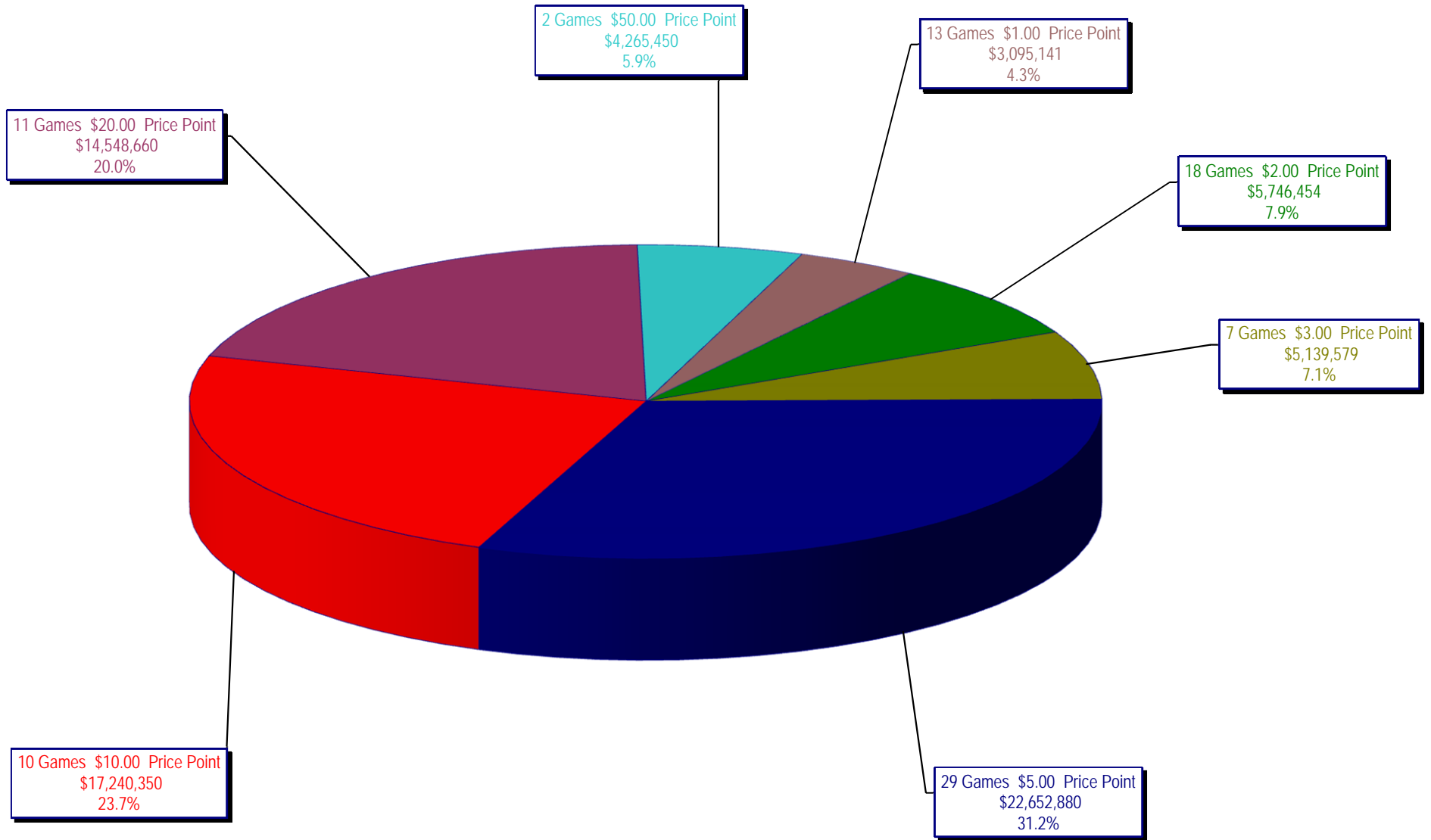
Draw Game Sales

		FY Sales Through Week Ending 12/3/2016		FY Prize Expense Through Week Ending 12/3/2016	Actual* Prize Payout	Base Payout (Prize Pool)
Lotto	\$	28,501,518	\$	14,253,409	50.01%	50.00%
Lotto Extra		5,449,654		2,924,678	53.67%	53.70%
Pick 3		62,947,283		31,164,490	49.51%	50.00%
Pick 3 Sum It Up		1,201,519		569,168	47.37%	50.00%
Cash Five		11,274,117		5,637,059	50.00%	50.00%
Texas Two Step		13,102,562		6,872,146	52.45%	50.00%
Mega Millions		26,532,194		13,576,598	51.17%	50.00%**
Megaplier		7,324,288		3,672,246	50.14%	N/A
Daily 4		23,314,381		10,042,575	43.07%	50.00%
Daily 4 Sum It Up		1,220,216		528,133	43.28%	50.00%
Powerball		61,328,827		30,677,158	50.02%	50.00%**
Power Play		8,519,497		4,263,192	50.04%	N/A
All or Nothing		7,497,752		4,062,312	54.18%	55.98%
Texas Triple Chance		4,149,178		2,192,992	52.85%	54.42%
<b>Totals</b>	\$	<b>262,362,985</b>	\$	<b>130,436,156</b>	<b>49.72%</b>	

\* Before Unclaimed Prizes

\*\*Estimated; depends on # of guaranteed prizes won in Texas

Texas Lottery Commission  
Scratch Ticket Sales  
For the week ending 12/03/2016  
(Unaudited)



**Texas Lottery Commission**  
**All Game Sales**  
For the week ending 12/03/2016  
(Unaudited)

