



WEEKLY SALES SUMMARY

Unaudited

[Week Ending: 12/05/2015](#)

Texas Lottery Commission
Fiscal Year to Date Sales Comparison
Unaudited

Through the Week Ending 12/05/2015 (14 Weeks)

Sales by Game	FY 2014 *	FY 2015 **	FY 2016	\$ Change		% Change	
				FY 2016 to FY 2014	FY 2016 to FY 2015	FY 2016 to FY 2014	FY 2016 to FY 2015
Scratch Tickets	\$ 839,427,932	\$ 867,115,719	\$ 895,520,618	\$ 56,092,686	\$ 28,404,899	6.7%	3.3%
Lotto Texas	35,622,052	31,888,389	33,506,413	-2,115,639	1,618,024	-5.9%	5.1%
Lotto Extra	4,540,308	4,811,882	5,650,801	1,110,493	838,919	24.5%	17.4%
Pick 3	67,574,141	66,241,005	66,241,271	-1,332,871	266	-2.0%	0.0%
Pick 3 Sum It Up	1,333,860	1,270,864	1,327,446	-6,414	56,582	-0.5%	4.5%
Cash Five	14,118,474	13,226,508	12,293,085	-1,825,389	-933,423	-12.9%	-7.1%
Texas Two Step	14,851,230	15,384,080	14,027,454	-823,776	-1,356,626	-5.5%	-8.8%
Mega Millions	42,698,434	42,367,219	33,479,980	-9,218,454	-8,887,239	-21.6%	-21.0%
Megaplier	9,359,250	9,603,733	8,358,855	-1,000,395	-1,244,878	-10.7%	-13.0%
Daily 4	22,319,089	22,236,077	22,709,759	390,670	473,682	1.8%	2.1%
Daily 4 Sum It Up	1,376,413	1,338,343	1,174,605	-201,809	-163,738	-14.7%	-12.2%
Powerball	63,169,679	46,307,335	52,724,200	-10,445,479	6,416,865	-16.5%	13.9%
Power Play	7,337,529	6,042,999	6,906,016	-431,513	863,017	-5.9%	14.3%
All or Nothing	12,686,974	10,506,874	8,327,188	-4,359,786	-2,179,686	-34.4%	-20.7%
Monopoly	-	2,414,870	-	-	-2,414,870	-	-100.0%
Texas Triple Chance	-	-	7,109,661	7,109,661	7,109,661	-	-
Total	\$ 1,136,415,365	\$ 1,140,755,896	\$ 1,169,357,350	\$ 32,941,986	\$ 28,601,455	2.9%	2.5%

* 2 extra days

** 1 extra day

Texas Lottery Commission
 Fiscal Year to Date Cumulative Average Sales Comparison
 Unaudited

Through the Week Ending 12/05/2015 (14 Weeks)

Sales by Game	FY 2014	FY 2015	FY 2016
Scratch Tickets	\$ 8,565,591	\$ 8,939,337	\$ 9,328,340
Lotto Texas	363,490	328,746	349,025
Lotto Extra	46,330	49,607	58,863
Pick 3	689,532	682,897	690,013
Pick 3 Sum It Up	13,611	13,102	13,828
Cash Five	144,066	136,356	128,053
Texas Two Step	151,543	158,599	146,119
Mega Millions	435,698	436,775	348,750
Megaplier	95,503	99,008	87,071
Daily 4	227,746	229,238	236,560
Daily 4 Sum It Up	14,045	13,797	12,235
Powerball	644,589	477,395	549,210
Power Play	74,873	62,299	71,938
All or Nothing	129,459	108,318	86,742
Monopoly	- **	49,283	-
Texas Triple Chance	-	-	* 101,567
Total	\$ <u>11,596,075</u>	\$ <u>11,784,758</u>	\$ <u>12,208,313</u>

thru 12/07/2013
98 days

**

thru 12/06/2014
97 days
49 days

*

thru 12/05/2015
96 days
70 days

Texas Lottery Commission
Fiscal Year Over Year Change in Sales
Unaudited
FY 2016 Compared to FY 2015

			SCRATCH TICKETS				DRAW GAMES				TOTAL SALES			
FY 2016			FY 2016	FY 2015	Difference	% change - Cumulative Sales	FY 2016	FY 2015	Difference	% change - Cumulative Sales	FY 2016	FY 2015	Difference	% change - Cumulative Sales
Week	Week Ending													
1	9/5/2015 *		\$49,534,249	\$54,911,801	(\$5,377,552)	-9.8%	\$17,091,724	\$17,482,488	(\$390,765)	-2.2%	\$66,625,973	\$72,394,289	(\$5,768,317)	-8.0%
2	9/12/2015		\$61,566,291	\$61,436,533	\$129,758	0.2%	\$20,630,922	\$19,097,081	\$1,533,841	8.0%	\$82,197,213	\$80,533,614	\$1,663,599	2.1%
3	9/19/2015		\$63,530,657	\$60,959,234	\$2,571,423	4.2%	\$20,327,253	\$20,567,894	(\$240,641)	-1.2%	\$83,857,910	\$81,527,128	\$2,330,782	2.9%
4	9/26/2015		\$61,731,400	\$59,710,056	\$2,021,344	3.4%	\$22,252,290	\$19,920,828	\$2,331,462	11.7%	\$83,983,690	\$79,630,884	\$4,352,806	5.5%
5	10/3/2015		\$67,048,415	\$62,119,854	\$4,928,561	7.9%	\$25,436,791	\$18,531,421	\$6,905,370	37.3%	\$92,485,206	\$80,651,275	\$11,833,931	14.7%
6	10/10/2015		\$66,049,706	\$61,253,665	\$4,796,041	7.8%	\$18,138,977	\$18,985,332	(\$846,355)	-4.5%	\$84,188,683	\$80,238,997	\$3,949,687	4.9%
7	10/17/2015		\$65,073,593	\$60,230,048	\$4,843,545	8.0%	\$17,776,414	\$19,538,402	(\$1,761,988)	-9.0%	\$82,850,007	\$79,768,450	\$3,081,558	3.9%
8	10/24/2015		\$64,087,437	\$62,384,112	\$1,703,325	2.7%	\$18,450,464	\$21,475,643	(\$3,025,179)	-14.1%	\$82,537,901	\$83,859,755	(\$1,321,854)	-1.6%
9	10/31/2015		\$66,025,374	\$63,404,713	\$2,620,661	4.1%	\$19,568,150	\$23,568,817	(\$4,000,668)	-17.0%	\$85,593,524	\$86,973,530	(\$1,380,007)	-1.6%
10	11/7/2015		\$68,137,192	\$65,486,719	\$2,650,473	4.0%	\$20,398,351	\$23,749,032	(\$3,350,681)	-14.1%	\$88,535,543	\$89,235,751	(\$700,208)	-0.8%
11	11/14/2015		\$65,449,428	\$61,745,521	\$3,703,907	6.0%	\$20,169,382	\$17,449,604	\$2,719,779	15.6%	\$85,618,810	\$79,195,125	\$6,423,686	8.1%
12	11/21/2015		\$68,364,421	\$66,353,583	\$2,010,838	3.0%	\$17,174,606	\$17,108,084	\$66,522	0.4%	\$85,539,027	\$83,461,667	\$2,077,360	2.5%
13	11/28/2015		\$61,091,628	\$60,471,184	\$620,444	1.0%	\$17,168,993	\$17,303,129	(\$134,136)	-0.8%	\$78,260,621	\$77,774,313	\$486,309	0.6%
14	12/5/2015		\$67,830,827	\$66,648,696	\$1,182,131	1.8%	\$19,252,418	\$18,862,425	\$389,994	2.1%	\$87,083,245	\$85,511,121	\$1,572,125	1.8%
15	12/12/2015			\$65,708,630				\$18,649,598				\$84,358,228		
16	12/19/2015			\$68,551,298				\$19,051,100				\$87,602,398		
17	12/26/2015			\$73,858,618				\$20,006,357				\$93,864,975		
18	1/2/2016			\$67,733,268				\$21,355,167				\$89,088,435		
19	1/9/2016			\$64,745,641				\$22,265,347				\$87,010,988		
20	1/16/2016			\$64,015,166				\$23,694,617				\$87,709,783		
21	1/23/2016			\$62,569,156				\$19,765,442				\$82,334,598		
22	1/30/2016			\$68,001,588				\$22,877,000				\$90,878,588		
23	2/6/2016			\$75,677,650				\$31,662,209				\$107,339,859		
24	2/13/2016			\$75,368,712				\$46,091,747				\$121,460,459		
25	2/20/2016			\$74,833,076				\$19,865,172				\$94,698,248		
26	2/27/2016			\$69,918,013				\$19,735,352				\$89,653,365		
27	3/5/2016			\$74,848,961				\$19,946,068				\$94,795,029		
28	3/12/2016			\$70,079,409				\$20,044,562				\$90,123,971		
29	3/19/2016			\$70,368,686				\$18,480,795				\$88,849,481		
30	3/26/2016			\$70,280,600				\$17,595,205				\$87,875,805		
31	4/2/2016			\$74,369,952				\$18,378,917				\$92,748,869		
32	4/9/2016			\$67,416,817				\$18,594,844				\$86,011,661		
33	4/16/2016			\$68,393,316				\$18,104,632				\$86,497,948		
34	4/23/2016			\$70,078,182				\$17,957,150				\$88,035,332		
35	4/30/2016			\$71,744,718				\$18,961,113				\$90,705,831		
36	5/7/2016			\$73,415,978				\$20,210,341				\$93,626,319		
37	5/14/2016			\$72,152,109				\$20,362,774				\$92,514,883		
38	5/21/2016			\$70,399,950				\$21,246,276				\$91,646,226		
39	5/28/2016			\$68,547,554				\$22,227,946				\$90,775,500		
40	6/4/2016			\$71,254,006				\$20,739,703				\$91,993,709		
41	6/11/2016			\$65,878,375				\$17,216,403				\$83,094,778		
42	6/18/2016			\$66,658,742				\$17,340,531				\$83,999,273		

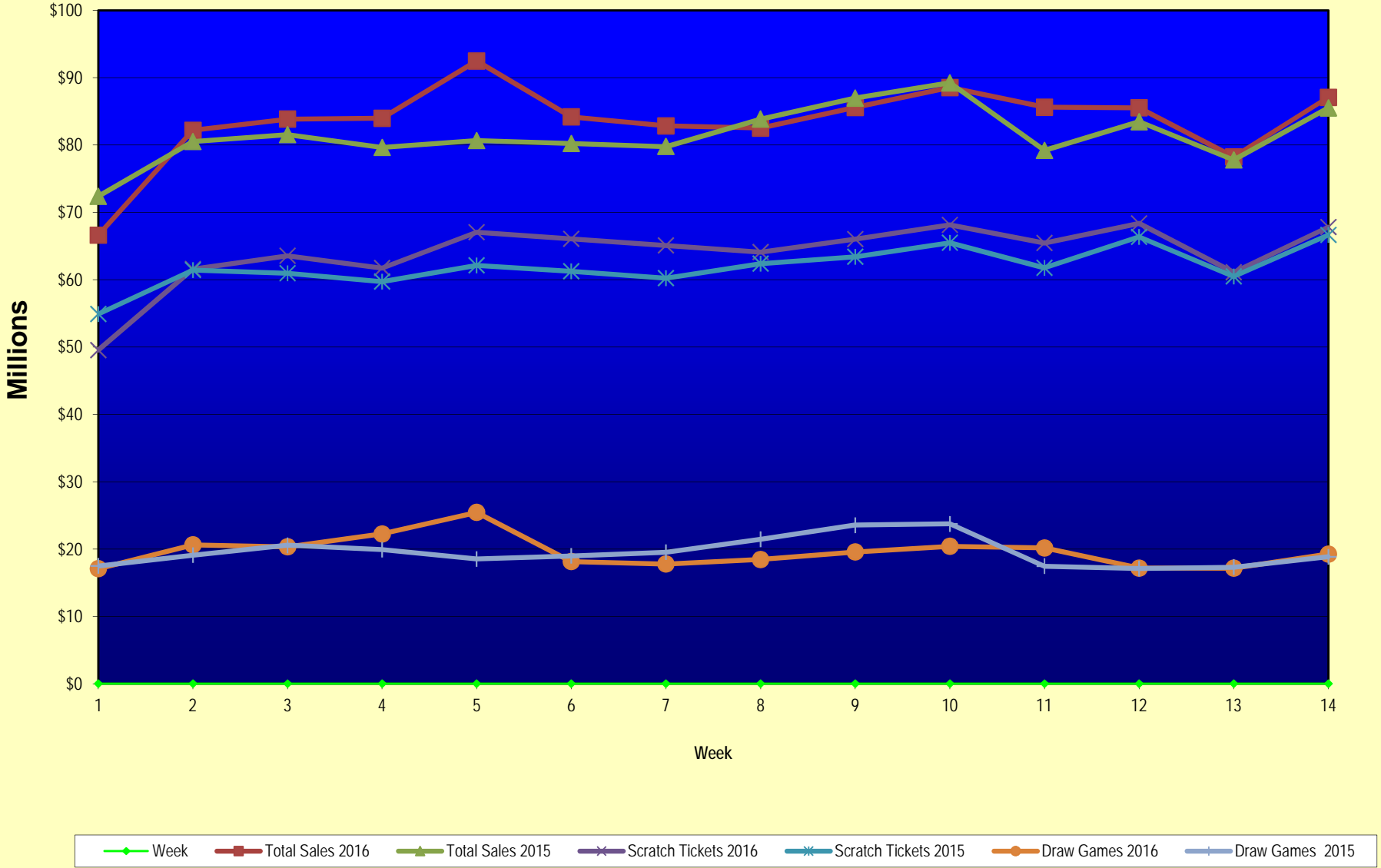
Texas Lottery Commission
Fiscal Year Over Year Change in Sales
Unaudited
FY 2016 Compared to FY 2015

			SCRATCH TICKETS				DRAW GAMES				TOTAL SALES			
FY 2016			FY 2016	FY 2015	Difference	% change - Cumulative Sales	FY 2016	FY 2015	Difference	% change - Cumulative Sales	FY 2016	FY 2015	Difference	% change - Cumulative Sales
Week	Week	Ending												
43	6/25/2016			\$65,282,276				\$16,873,368				\$82,155,644		
44	7/2/2016			\$67,757,752				\$18,007,540				\$85,765,292		
45	7/9/2016			\$64,718,254				\$18,203,985				\$82,922,239		
46	7/16/2016			\$64,957,977				\$18,792,785				\$83,750,762		
47	7/23/2016			\$62,541,241				\$18,229,965				\$80,771,206		
48	7/30/2016			\$66,468,460				\$17,742,489				\$84,210,949		
49	8/6/2016			\$62,412,598				\$17,331,374				\$79,743,972		
50	8/13/2016			\$62,089,389				\$17,501,599				\$79,590,988		
51	8/20/2016			\$62,437,148				\$17,779,458				\$80,216,606		
52	8/27/2016			\$61,403,206				\$18,529,560				\$79,932,766		
	8/31/2016 **			\$17,309,621				\$3,279,958				\$20,589,579		
Total thru Current Week			\$895,520,618	\$867,115,719	\$28,404,899	3.3%	\$273,836,732	\$273,640,177	\$196,556	0.1%	\$1,169,357,350	\$1,140,755,896	\$28,601,455	2.5%
Fiscal Year Total			\$895,520,618	\$3,481,361,812			\$273,836,732	\$1,048,338,613			\$1,169,357,350	\$4,529,700,425		

* FY 16 includes 5 days; FY 15 includes 6 days

** FY 16 includes 4 days; FY 15 includes 2 days

Texas Lottery Commission Fiscal Year Over Year Change in Sales



Note: Week 1 is not a full week of sales as this report is prepared on a Fiscal Year basis.

Texas Lottery Commission
Scratch Tickets by Price Point
Sales, Prize Expense, Sales Contribution and Payout Percentage With Year Over Year Changes
Unaudited

Fiscal Year	Price Point	# of Active Games	FY Sales	% of Scratch Ticket Sales	Year over Year Change in Sales	FY Prize Expense	Year over Year Change in Prize Expense	FY Sales Contribution	Year over Year Change in Contribution	Average Prize Payout %	Year over Year Change in Payout %
2015	\$1.00	17	43,870,422	5.1%		26,966,554		16,903,868		61.5%	2.6%
Through	\$2.00	26	90,640,072	10.5%		60,118,115		30,521,957		66.3%	2.3%
12/6/2014	\$3.00	11	86,055,915	9.9%		56,717,784		29,338,131		65.9%	0.4%
	\$5.00	37	275,136,730	31.7%		186,913,201		88,223,529		67.9%	0.0%
	\$10.00	13	173,274,310	20.0%		122,292,412		50,981,898		70.6%	0.4%
	\$20.00	8	158,316,220	18.3%		118,713,364		39,602,856		75.0%	0.1%
	\$50.00	3	39,822,050	4.6%		30,947,628		8,874,422		77.7%	0.1%
Total		115	\$867,115,719			\$602,669,059		\$264,446,660		69.5%	0.9%
2016	\$1.00	13	39,648,588	4.4%		24,021,382		15,627,206		60.6%	0.1%
thru	\$2.00	25	88,959,770	9.9%		57,890,268		31,069,502		65.1%	-0.6%
12/5/2015	\$3.00	9	77,649,825	8.7%		51,094,612		26,555,213		65.8%	-0.2%
	\$5.00	40	285,866,035	31.9%		194,213,759		91,652,276		67.9%	0.0%
	\$10.00	14	179,346,160	20.0%		125,660,186		53,685,974		70.1%	-0.3%
	\$20.00	9	179,893,140	20.1%		134,815,357		45,077,783		74.9%	0.0%
	\$50.00	3	44,157,100	4.9%		34,342,524		9,814,576		77.8%	0.0%
Total		113	\$895,520,618			\$622,038,088		\$273,482,530		69.5%	0.0%
Variance	\$1.00	-4	-4,221,834		-9.6%	-2,945,172	-10.9%	-1,276,662	-7.6%	-0.88%	
2015 to	\$2.00	-1	-1,680,302		-1.9%	-2,227,847	-3.7%	547,545	1.8%	-1.25%	
2014	\$3.00	-2	-8,406,090		-9.8%	-5,623,172	-9.9%	-2,782,918	-9.5%	-0.11%	
	\$5.00	3	10,729,305		3.9%	7,300,558	3.9%	3,428,747	3.9%	0.00%	
	\$10.00	1	6,071,850		3.5%	3,367,774	2.8%	2,704,076	5.3%	-0.51%	
	\$20.00	1	21,576,920		13.6%	16,101,993	13.6%	5,474,927	13.8%	-0.04%	
	\$50.00	0	4,335,050		10.9%	3,394,896	11.0%	940,154	10.6%	0.06%	
Total		-2	\$28,404,899		3.3%	\$19,369,029	3.2%	\$9,035,870	3.4%	-0.04%	

Notes - Scratch Ticket Variances

Texas Lottery Commission
Scratch Tickets by Price Point
Sales, Prize Expense, Sales Contribution and Payout Percentage With Year Over Year Changes
Unaudited

			FY 2016		FY 2015	Difference
Sales	\$1 - \$5		\$492,124,218		\$495,703,139	-\$3,578,921
Prize Exp.	\$1 - \$5		\$327,220,021		\$330,715,655	-\$3,495,633
Sales Cont.	\$1 - \$5		\$164,904,197		\$164,987,484	-\$83,288
Prize Exp. %	\$1 - \$5		66.5%		66.7%	-0.2%
			FY 2016		FY 2015	Difference
Sales	\$10 - \$50		\$403,396,400		\$371,412,580	\$31,983,820
Prize Exp.	\$10 - \$50		\$294,818,066		\$271,953,404	\$22,864,662
Sales Cont.	\$10 - \$50		\$108,578,334		\$99,459,176	\$9,119,158
Prize Exp. %	\$10 - \$50		73.1%		73.2%	-0.1%
			FY 2016		FY 2015	Difference
Sales	Scratch		\$895,520,618		\$867,115,719	\$28,404,899
Prize Exp.	Scratch		\$622,038,088		\$602,669,059	\$19,369,029
Sales Cont.	Scratch		\$273,482,530		\$264,446,660	\$9,035,870
Prize Exp. %	Scratch		69.5%		69.5%	0.0%

			FY 2016		FY 2015	Difference
Sales	\$1 - \$10		\$671,470,378		\$668,977,449	\$2,492,929
Prize Exp.	\$1 - \$10		\$452,880,208		\$453,008,067	-\$127,860
Sales Cont.	\$1 - \$10		\$218,590,170		\$215,969,382	\$2,620,789
Prize Exp. %	\$1 - \$10		67.4%		67.7%	-0.3%
			FY 2016		FY 2015	Difference
Sales	\$20 - \$50		\$224,050,240		\$198,138,270	\$25,911,970
Prize Exp.	\$20 - \$50		\$169,157,880		\$149,660,992	\$19,496,889
Sales Cont.	\$20 - \$50		\$54,892,360		\$48,477,278	\$6,415,081
Prize Exp. %	\$20 - \$50		75.5%		75.5%	0.0%
			FY 2016		FY 2015	Difference
Sales	Scratch		\$895,520,618		\$867,115,719	\$28,404,899
Prize Exp.	Scratch		\$622,038,088		\$602,669,059	\$19,369,029
Sales Cont.	Scratch		\$273,482,530		\$264,446,660	\$9,035,870
Prize Exp. %	Scratch		69.5%		69.5%	0.0%

Texas Lottery Commission
Weekly Sales Summary
& Comparison to Previous Week
 Unaudited

	Week Ending 12/05/2015		Week Ending 11/28/2015			
	<u>THIS WEEK</u>	% of Sales	<u>LAST WEEK</u>	% of Sales	<u>\$ change</u>	<u>% change</u>
Total Sales	<u>\$87,083,245</u>		<u>\$78,260,621</u>		<u>\$8,822,624</u>	11.27%
Scratch Tickets	<u>\$67,830,827</u>	77.9%	<u>\$61,091,628</u>	78.1%	<u>\$6,739,199</u>	11.03%
Lotto	\$2,245,481	2.6%	\$2,113,171	2.7%	\$132,310	6.26%
Lotto Extra	\$385,346	0.4%	\$364,947	0.5%	\$20,399	5.59%
Pick 3	\$5,020,926	5.8%	\$4,523,108	5.8%	\$497,819	11.01%
Pick 3 Sum It Up	\$94,445	0.1%	\$87,438	0.1%	\$7,007	8.01%
Cash Five	\$898,598	1.0%	\$825,047	1.1%	\$73,551	8.91%
Texas Two Step	\$957,116	1.1%	\$904,825	1.2%	\$52,291	5.78%
Mega Millions	\$2,073,099	2.4%	\$1,785,419	2.3%	\$287,680	16.11%
Megaplier	\$545,451	0.6%	\$478,828	0.6%	\$66,623	13.91%
Daily 4	\$1,789,318	2.1%	\$1,591,416	2.0%	\$197,903	12.44%
Daily 4 Sum It Up	\$94,198	0.1%	\$82,363	0.1%	\$11,835	14.37%
Powerball	\$3,432,248	3.9%	\$2,886,666	3.7%	\$545,582	18.90%
Power Play	\$467,917	0.5%	\$406,251	0.5%	\$61,666	15.18%
All or Nothing	\$603,222	0.7%	\$546,614	0.7%	\$56,608	10.36%
Texas Triple Chance	\$645,054	0.7%	\$572,902	0.7%	\$72,152	12.59%
Total Draw Game Sales	<u>\$19,252,418</u>		<u>\$17,168,993</u>		<u>\$2,083,425</u>	12.13%

* Totals may not sum due to rounding.

Texas Lottery Commission
Weekly Sales Summary
Unaudited

SCRATCH TICKETS
TOP TEN SELLING GAMES

For the week ending: 12/05/2015

Rank	Price Point	Game	Sales (Millions)
1	\$ 20	HOLIDAY GAME BOOK	\$ 4.261
2	\$ 10	HAPPY HOLIDAYS	\$ 3.707
3	\$ 5	HOLIDAY TREASURES	\$ 2.912
4	\$ 10	CASHWORD MULTIPLIER	\$ 2.855
5	\$ 20	\$1,000,000 INSTANT CASHOUT	\$ 2.781
6	\$ 20	\$500,000,000 CASH	\$ 2.548
7	\$ 50	DIAMOND DOLLARS	\$ 2.547
8	\$ 3	TEXAS LOTERIA	\$ 2.366
9	\$ 3	BONUS CASHWORD	\$ 2.292
10	\$ 5	MERRY MONEY	\$ 2.277

Texas Lottery Commission
Prize Payout Tracking Report
Unaudited

Through the week ending: 12/05/2015

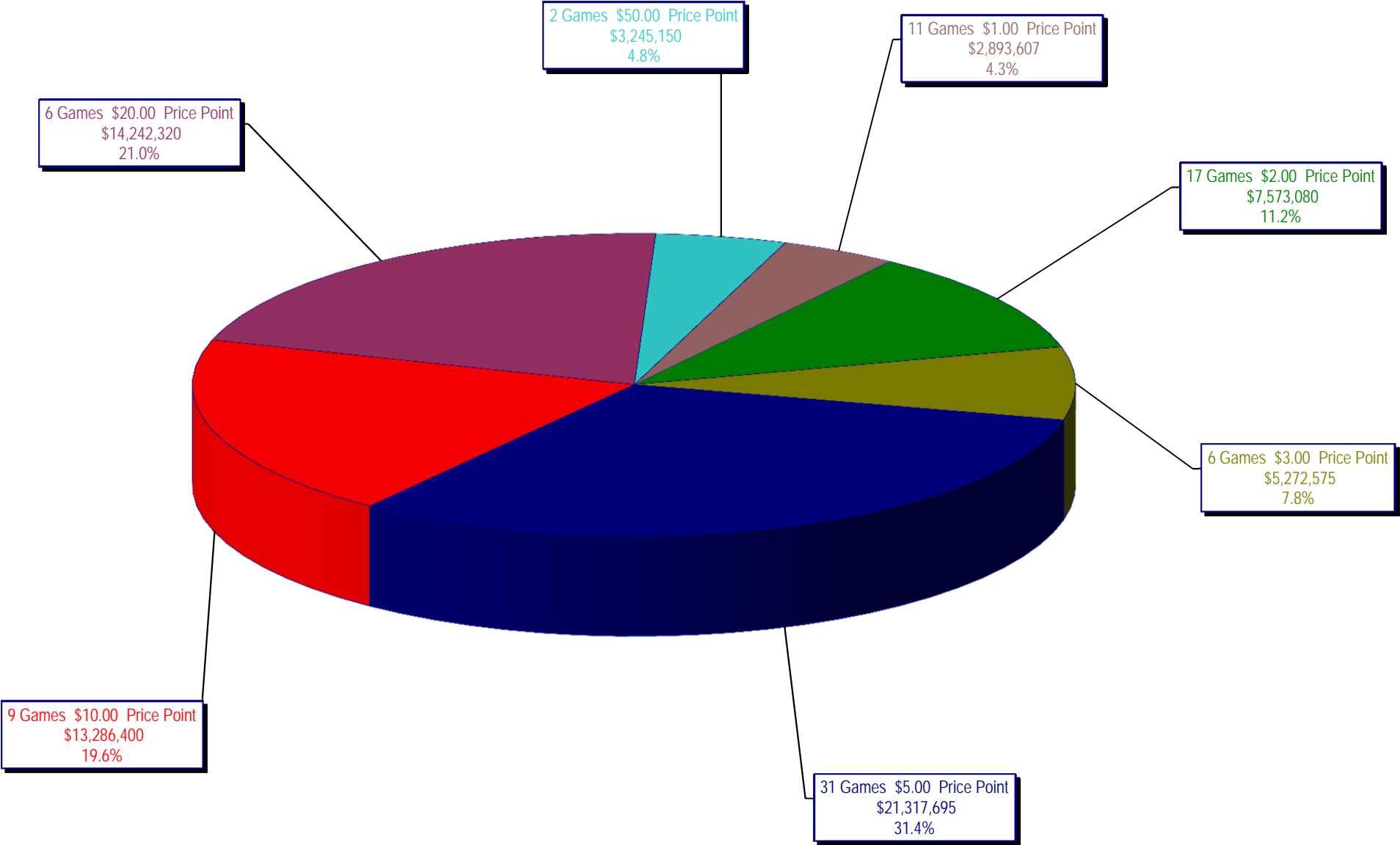
Draw Game Sales

		FY Sales Through Week Ending 12/5/2015		FY Prize Expense Through Week Ending 12/5/2015	Actual* Prize Payout	Base Payout (Prize Pool)
Lotto	\$	33,506,413	\$	22,696,755	67.74%	50.00%
Lotto Extra		5,650,801		2,848,050	50.40%	53.70%
Pick 3		66,241,271		32,619,900	49.24%	50.00%
Pick 3 Sum It Up		1,327,446		667,773	50.31%	50.00%
Cash Five		12,293,085		6,146,543	50.00%	50.00%
Texas Two Step		14,027,454		7,100,917	50.62%	50.00%
Mega Millions		33,479,980		17,243,492	51.50%	50.00%**
Megaplier		8,358,855		4,217,544	50.46%	N/A
Daily 4		22,709,759		10,434,925	45.95%	50.00%
Daily 4 Sum It Up		1,174,605		419,950	35.75%	50.00%
Powerball		52,724,200		26,576,808	50.41%	50.00%**
Power Play		6,906,016		3,481,180	50.41%	N/A
All or Nothing		8,327,188		4,394,682	52.78%	55.98%
Texas Triple Chance		7,109,661		4,430,604	62.32%	54.42%
Totals	\$	273,836,732	\$	143,279,123	52.32%	

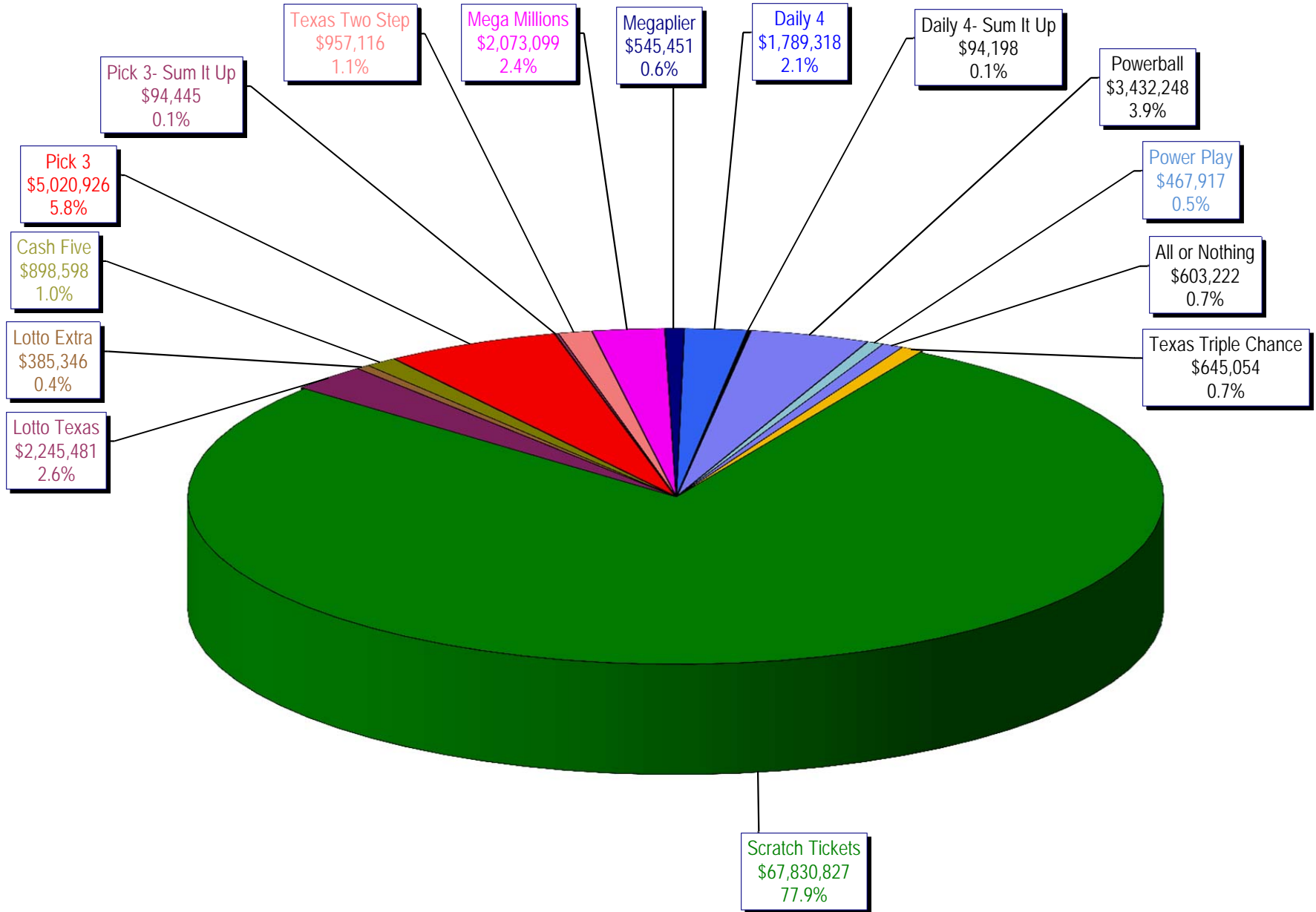
* Before Unclaimed Prizes

** Estimated; depends on # of guaranteed prizes won in Texas

Texas Lottery Commission
Scratch Ticket Sales
For the week ending 12/05/15
(Unaudited)



Texas Lottery Commission
All Game Sales
For the week ending 12/05/15
(Unaudited)



Texas Lottery Commission - Weekly Sales Summary for FY 2016 (Unaudited)

Week Ended	Scratch Tickets	New Games & Dates	Lotto Texas	Jackpot W S	Lotto Extra	Pick 3	Pick 3 Sum It Up	Cash Five	Texas Two Step	Jackpot M TH	Mega Millions	Jackpot T F	Megaplier	Daily 4	Daily 4 Sum It Up	Powerball	Jackpot W S	Power Play	All or Nothing	Monopoly	Jackpot F	Texas Triple Chance	Total	Per Cap.	
9/5/2015*	66,843,870	0	2,788,509	25 26	466,121	5,249,348	117,979	956,126	1,253,100	425 575	2,366,640	74 85	608,901	1,725,027	93,067	3,586,482	120 133	484,769	675,614	0			87,215,551	3.24	
9/12/2015	61,566,291	1717 (\$1.N); 1718 (\$5.N); 1748 (\$10.N); 1696 (\$3.N) - 9/08/15	2,793,426	26.5 27.75	465,451	4,974,238	103,203	919,536	1,423,604	725 950	2,511,039	95 106	629,091	1,641,226	86,539	3,927,126	149 167	518,060	638,384	0			82,197,213	3.05	
9/19/2015	63,530,657	0	2,845,557	28.25 29.5	475,307	4,715,566	95,242	928,275	854,109	200 225	1,817,155	15 20	487,946	1,647,829	81,483	5,082,782	185 208	639,614	656,388	0			83,857,910	3.11	
9/26/2015	61,731,400	1720 (\$2.N); 1721 (\$5.N); 1715 (\$5.N) - 9/21/15	2,815,638	30 30.75	468,584	4,735,629	97,118	924,334	1,048,752	300 450	1,860,438	25 31	499,201	1,628,350	82,200	6,648,092	235 267	790,427	653,528	0			83,983,690	3.12	
10/3/2015	67,048,415	0	3,034,763	31.5 32.25	502,043	4,925,789	100,522	919,217	1,347,552	600 725	2,053,673	39 47	539,290	1,662,320	88,291	8,036,576	301 40	884,785	616,594	0		725,376	92,485,206	3.43	
10/10/2015	66,049,706	1722 (\$1.N); 1723 (\$5.N); 1711 (\$20.N) - 10/05/15	2,175,801	5 5.25	366,506	4,803,855	97,005	899,614	1,141,865	925 200	2,113,720	55 65	535,411	1,636,542	86,150	2,572,748	50 60	372,480	593,616	0		743,664	84,188,683	3.12	
10/17/2015	65,073,593	0	2,133,286	5 5	358,076	4,629,752	92,453	876,040	824,622	200 225	2,286,703	75 84	568,477	1,576,323	79,576	2,638,956	70 80	377,157	580,870	0		754,124	82,850,007	3.07	
10/24/2015	64,087,437	1724 (\$2.N); 1768 (\$5.N); 1726 (\$10.N) - 10/19/15	2,099,176	5.25 5.5	358,217	4,515,381	92,071	860,960	991,931	300 425	2,600,946	93 105	626,019	1,553,788	80,225	2,946,077	90 100	411,192	562,378	0		752,104	82,537,901	3.06	
10/31/2015	66,025,374	0	2,165,101	5.75 6	368,559	4,653,961	91,360	873,751	944,275	550 200	2,945,749	117 129	695,705	1,621,009	85,560	3,327,954	110 127	455,266	573,258	0		766,642	85,593,524	3.18	
11/7/2015	68,137,192	1727 (\$1.N); 1728 (\$2.N); 1729 (\$5.N) - 11/02/15	2,232,267	6.25 6.5	379,508	4,977,693	96,887	891,111	911,796	225 300	3,416,380	144 164	795,028	1,688,298	86,418	3,071,581	142 40	425,312	599,980	0		826,093	88,535,543	3.28	
11/14/2015	65,449,428	0	2,185,621	6.75 7	373,102	4,726,211	93,030	870,215	1,087,101	425 575	4,139,462	180 200	938,757	1,614,727	82,536	2,437,413	50 60	357,760	574,596	0		688,852	85,618,810	3.18	
11/21/2015	68,364,421	1730 (\$2.N); 1783 (\$2.N); 1731 (\$5.N) - 11/16/15 1778 (\$2.N) - 11/18/15	2,173,857	7.25 7.5	369,519	4,674,293	88,988	862,630	825,054	200 225	1,830,909	15 20	489,485	1,632,096	82,077	2,553,907	70 80	370,594	586,348	0		634,850	85,539,027	3.17	
11/28/2015	61,091,628	0	2,113,171	7.75 8.25	364,947	4,523,108	87,438	825,047	904,825	300 400	1,785,419	25 31	478,828	1,591,416	82,363	2,886,666	90 100	406,251	546,614	0		572,902	78,260,621	2.90	
12/5/2015	67,830,827	1733 (\$5.N) - 12/5/15	2,245,481	8.75 9.5	385,346	5,020,926	94,445	898,598	957,116	525 200	2,073,099	39 47	545,451	1,789,318	94,198	3,432,248	110 127	467,917	603,222	0		645,054	87,083,245	3.23	
weekly change	11.0%		6.3%		5.6%	11.0%	8.0%	8.9%	5.8%		16.1%		13.9%	12.4%	14.4%	18.9%		15.2%	10.4%	0.0%		12.6%	11.3%		
	SALES		SALES		SALES	SALES	SALES	SALES	SALES	SALES	SALES	SALES	SALES	SALES	SALES	SALES	SALES	SALES	SALES	SALES	SALES	SALES	% of Sales		
Calendar Year to date	3,263,560,355		116,162,032		19,113,666	234,421,944	4,934,701	45,904,418	50,948,986		128,191,214		31,414,273	81,111,390	4,451,678	197,399,009		25,246,354	33,042,466	(390)		7,109,661	4,243,011,756	100.0%	
Fiscal Year to date 2016	895,520,618		33,506,413		5,650,801	66,241,271	1,327,446	12,293,085	14,027,454		33,479,980		8,358,855	22,709,759	1,174,605	52,724,200		6,906,016	8,327,188	0		7,109,661	1,169,357,350	100.0%	
*Full week includes 2 days from FY15																									