



WEEKLY SALES SUMMARY

Unaudited

Week Ending: 12/06/08

Texas Lottery Commission
Fiscal Year to Date Sales Comparison
Unaudited

Through the week ending 12/06/2008 (14 weeks)

Sales by Game	FY 2007 *	FY 2008 **	FY 2009	\$ Change		% Change	
				FY 2009 to FY 2007	FY 2009 to FY 2008	FY 2009 to FY 2007	FY 2009 to FY 2008
Instants	\$ 747,176,206	\$ 739,369,643	\$ 701,382,756	\$ -45,793,450	\$ -37,986,887	-6.1%	-5.1%
Lotto Texas	54,785,693	59,324,191	47,955,842	-6,829,851	-11,368,349	-12.5%	-19.2%
Pick 3	83,412,634	76,597,285	72,609,536	-10,803,098	-3,987,749	-13.0%	-5.2%
Pick 3 Sum It Up	-	859,950	1,549,638	1,549,638	689,688	-	-
Cash 5	23,820,516	21,073,861	18,690,687	-5,129,829	-2,383,174	-21.5%	-11.3%
Texas Two Step	16,531,782	11,502,222	12,157,675	-4,374,107	655,453	-26.5%	5.7%
Mega Millions	38,276,853	37,001,361	41,433,946	3,157,093	4,432,585	8.2%	12.0%
Megaplier	9,438,636	9,469,539	10,164,861	726,225	695,322	7.7%	7.3%
Daily 4	-	10,758,127	10,986,978	10,986,978	228,851	-	2.1%
Daily 4 Sum It Up	-	3,037,459	1,439,908	1,439,908	-1,597,551	-	-52.6%
Total	\$ 973,442,320	\$ 968,993,638	\$ 918,371,826	\$ -55,070,494	\$ -50,621,812	-5.7%	-5.2%

* 3 extra days in 2007 ** 2 extra days in 2008

Texas Lottery Commission
Fiscal Year Over Year Change in Sales
Unaudited
FY 2009 Compared to FY 2008

Week	FY 2009 Week Ending	INSTANT TICKETS				ON-LINE GAMES				TOTAL SALES			
		FY 2009	FY 2008	Difference	% change - Cumulative Sales	FY 2009	FY 2008	Difference	% change - Cumulative Sales	FY 2009	FY 2008	Difference	% change - Cumulative Sales
1	9/6/2008**	\$44,890,104	\$62,376,229	(\$17,486,125)	-28.0%	\$14,722,011	\$19,372,224	(\$4,650,213)	-24.0%	\$59,612,115	\$81,748,453	(\$22,136,338)	-27.1%
2	9/13/2008	\$46,309,551	\$52,458,866	(\$6,149,315)	-20.6%	\$13,704,860	\$16,926,163	(\$3,221,303)	-21.7%	\$60,014,411	\$69,385,029	(\$9,370,618)	-20.8%
3	9/20/2008	\$42,923,171	\$49,998,934	(\$7,075,763)	-18.6%	\$12,291,263	\$15,792,283	(\$3,501,020)	-21.8%	\$55,214,434	\$65,791,217	(\$10,576,783)	-19.4%
4	9/27/2008	\$47,042,801	\$49,894,175	(\$2,851,374)	-15.6%	\$14,222,339	\$14,800,514	(\$578,175)	-17.9%	\$61,265,140	\$64,694,689	(\$3,429,549)	-16.2%
5	10/4/2008	\$50,747,162	\$53,486,863	(\$2,739,701)	-13.5%	\$15,784,472	\$16,618,430	(\$833,958)	-15.3%	\$66,531,634	\$70,105,293	(\$3,573,659)	-14.0%
6	10/11/2008	\$49,763,789	\$50,918,020	(\$1,154,231)	-11.7%	\$15,622,498	\$15,601,410	\$21,088	-12.9%	\$65,386,287	\$66,519,430	(\$1,133,143)	-12.0%
7	10/18/2008	\$49,299,053	\$50,532,253	(\$1,233,200)	-10.5%	\$15,167,940	\$15,682,666	(\$514,726)	-11.6%	\$64,466,993	\$66,214,919	(\$1,747,926)	-10.7%
8	10/25/2008	\$49,977,581	\$50,347,450	(\$369,869)	-9.3%	\$14,525,843	\$15,586,516	(\$1,060,673)	-11.0%	\$64,503,424	\$65,933,966	(\$1,430,542)	-9.7%
9	11/1/2008	\$50,346,542	\$53,953,733	(\$3,607,191)	-9.0%	\$14,838,845	\$16,775,983	(\$1,937,139)	-11.1%	\$65,185,387	\$70,729,716	(\$5,544,330)	-9.5%
10	11/8/2008	\$54,860,087	\$53,635,090	\$1,224,997	-7.9%	\$16,057,069	\$15,912,791	\$144,278	-9.9%	\$70,917,156	\$69,547,881	\$1,369,275	-8.3%
11	11/15/2008	\$53,484,812	\$51,254,401	\$2,230,411	-6.8%	\$15,829,819	\$15,797,076	\$32,744	-9.0%	\$69,314,631	\$67,051,477	\$2,263,155	-7.3%
12	11/22/2008	\$52,806,511	\$50,897,817	\$1,908,694	-5.9%	\$16,460,748	\$15,801,720	\$659,028	-7.9%	\$69,267,259	\$66,699,537	\$2,567,722	-6.4%
13	11/29/2008	\$52,199,741	\$53,913,115	(\$1,713,374)	-5.7%	\$17,397,576	\$17,055,505	\$342,072	-7.1%	\$69,597,317	\$70,968,620	(\$1,371,303)	-6.0%
14	12/6/2008	\$56,731,851	\$55,702,697	\$1,029,154	-5.1%	\$20,363,789	\$17,900,717	\$2,463,073	-5.5%	\$77,095,640	\$73,603,414	\$3,492,227	-5.2%
15	12/13/2008		\$53,703,516				\$17,820,841				\$71,524,357		
16	12/20/2008		\$57,592,769				\$17,436,233				\$75,029,002		
17	12/27/2008		\$57,696,003				\$14,743,680				\$72,439,683		
18	1/3/2009		\$57,935,952				\$15,704,450				\$73,640,402		
19	1/10/2009		\$55,360,542				\$15,691,540				\$71,052,082		
20	1/17/2009		\$54,920,166				\$16,259,669				\$71,179,835		
21	1/24/2009		\$54,439,890				\$16,691,724				\$71,131,614		
22	1/31/2009		\$57,464,382				\$17,968,227				\$75,432,609		
23	2/7/2009		\$60,715,019				\$20,097,338				\$80,812,357		
24	2/14/2009		\$57,093,143				\$22,179,908				\$79,273,051		
25	2/21/2009		\$57,627,047				\$27,230,539				\$84,857,586		
26	2/28/2009		\$55,591,667				\$17,016,118				\$72,607,785		
27	3/7/2009		\$56,837,481				\$16,690,193				\$73,527,674		
28	3/14/2009		\$54,587,112				\$16,448,165				\$71,035,277		
29	3/21/2009		\$53,098,937				\$16,639,184				\$69,738,121		
30	3/28/2009		\$53,933,689				\$17,698,625				\$71,632,314		
31	4/4/2009		\$57,598,982				\$17,665,411				\$75,264,393		
32	4/11/2009		\$53,954,185				\$15,860,784				\$69,814,969		
33	4/18/2009		\$53,946,736				\$16,452,676				\$70,399,412		
34	4/25/2009		\$51,533,006				\$16,873,949				\$68,406,955		
35	5/2/2009		\$53,250,568				\$18,202,103				\$71,452,671		
36	5/9/2009		\$54,060,849				\$18,422,562				\$72,483,411		
37	5/16/2009		\$54,010,641				\$20,728,360				\$74,739,001		
38	5/23/2009		\$50,377,032				\$15,461,384				\$65,838,416		
39	5/30/2009		\$49,545,080				\$15,175,370				\$64,720,450		
40	6/6/2009		\$53,702,986				\$15,982,166				\$69,685,152		

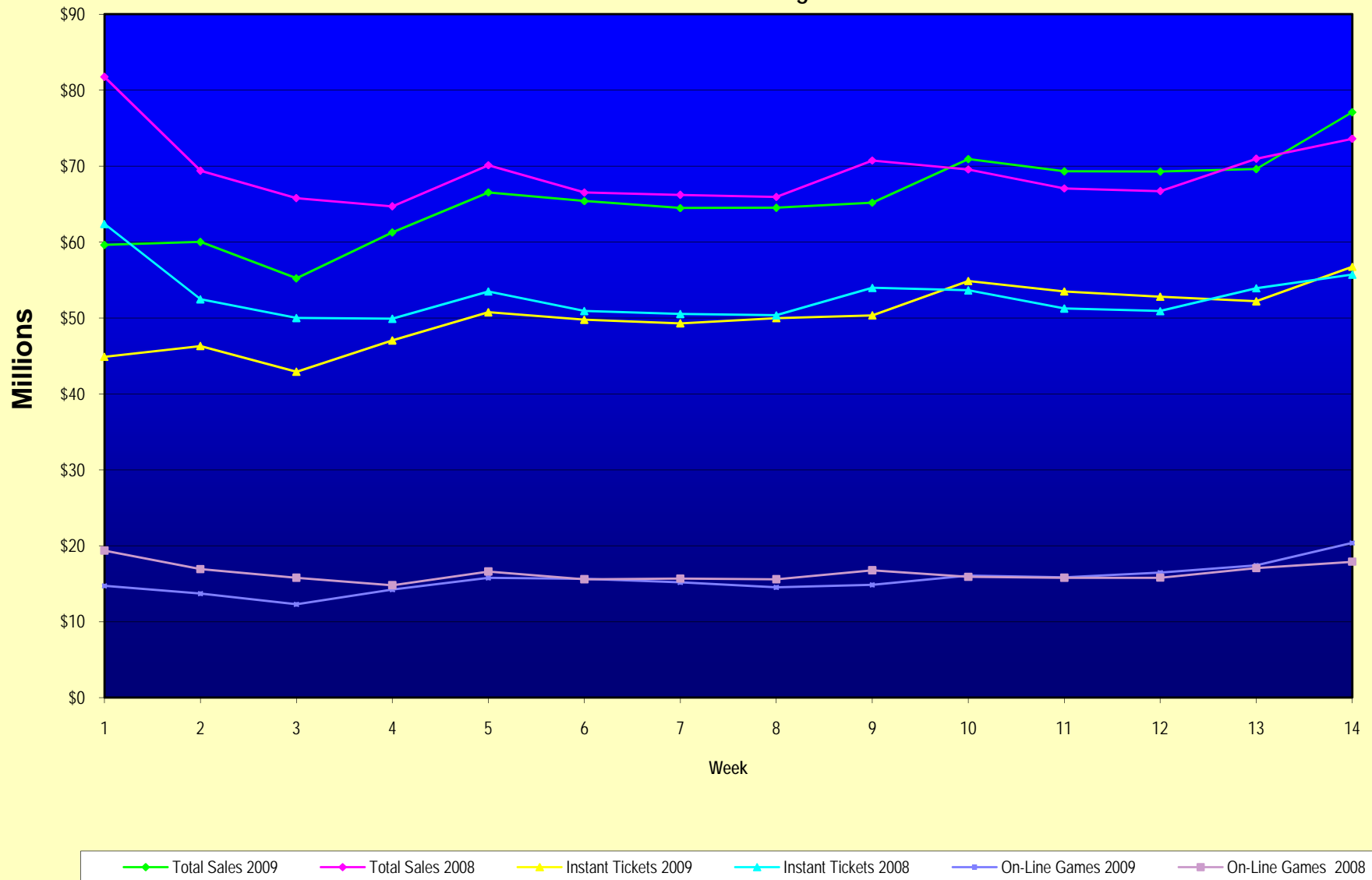
Note: Week 1 is not a full week of sales as this report is prepared on a Fiscal Year basis.

Texas Lottery Commission
Fiscal Year Over Year Change in Sales
Unaudited
FY 2009 Compared to FY 2008

Week	FY 2009 Week Ending	INSTANT TICKETS				ON-LINE GAMES				TOTAL SALES			
		FY 2009	FY 2008	Difference	% change - Cumulative Sales	FY 2009	FY 2008	Difference	% change - Cumulative Sales	FY 2009	FY 2008	Difference	% change - Cumulative Sales
41	6/13/2009		\$51,171,483				\$16,589,087				\$67,760,570		
42	6/20/2009		\$50,650,362				\$15,728,484				\$66,378,846		
43	6/27/2009		\$49,258,266				\$15,250,905				\$64,509,171		
44	7/4/2009		\$53,393,355				\$16,270,619				\$69,663,974		
45	7/11/2009		\$53,127,756				\$16,914,922				\$70,042,678		
46	7/18/2009		\$51,593,146				\$17,752,738				\$69,345,884		
47	7/25/2009		\$49,902,181				\$16,706,145				\$66,608,326		
48	8/1/2009		\$49,605,420				\$16,254,383				\$65,859,803		
49	8/8/2009		\$50,961,907				\$16,770,496				\$67,732,403		
50	8/15/2009		\$49,452,511				\$16,749,487				\$66,201,998		
51	8/22/2009		\$49,249,518				\$17,286,302				\$66,535,820		
52	8/29/2009		\$49,468,928				\$18,109,997				\$67,578,925		
53	9/5/2009		\$6,054,239				\$493,109				\$6,547,348		
Total thru Current Week		\$701,382,756	\$739,369,643	(\$37,986,887)	-5.1%	\$216,989,070	\$229,623,995	(\$12,634,925)	-5.5%	\$918,371,826	\$968,993,638	(\$50,621,812)	-5.2%
Fiscal Year Total		\$701,382,756	\$2,783,836,095			\$216,989,070	\$887,641,858			\$918,371,826	\$3,671,477,953		

** FY 2009 includes 6 days; FY 2008 includes 8 days
FY 2009 average daily sales are \$9,242,258. Two days at average daily sales are \$18,484,516.

Texas Lottery Commission Fiscal Year Over Year Change in Sales



Note: Week 1 is not a full week of sales as this report is prepared on a Fiscal Year basis.

Texas Lottery Commission
Instant Tickets by Price Point
Sales, Prize Expense, Sales Contribution and Payout Percentage With Year Over Year Changes
Unaudited

Fiscal Year	Price Point	# of Active Games	FY Sales	% of Instant Ticket Sales	Year over Year Change in Sales	FY Prize Expense	Year over Year Change in Prize Expense	FY Sales Contribution	Year over Year Change in Contribution	Average Prize Payout %	Year over Year Change in Payout %
2008	\$1.00	36	64,819,561	8.8%		38,960,360		25,859,201		60.1%	
thru	\$2.00	40	125,494,168	17.0%		81,587,897		43,906,271		65.0%	
12/8/2007	\$3.00	11	57,351,582	7.8%		37,812,946		19,538,636		65.9%	
	\$5.00	33	195,497,800	26.4%		132,534,141		62,963,659		67.8%	
	\$7.00	10	54,123,181	7.3%		36,795,465		17,327,716		68.0%	
	\$10.00	15	112,167,876	15.2%		78,526,827		33,641,049		70.0%	
	\$20.00	6	44,558,280	6.0%		32,043,169		12,515,111		71.9%	
	\$25.00	2	32,594,475	4.4%		23,663,077		8,931,398		72.6%	
	\$30.00	2	9,291,270	1.3%		6,716,074		2,575,196		72.3%	
	\$50.00	2	43,471,450	5.9%		31,357,365		12,114,085		72.1%	
Total		157	\$739,369,643			\$499,997,319		\$239,372,324		67.6%	
2009	\$1.00	32	59,415,605	8.5%		35,797,916		23,617,689		60.3%	0.1%
thru	\$2.00	28	121,605,922	17.3%		78,866,266		42,739,656		64.9%	-0.2%
12/6/2008	\$3.00	13	78,064,347	11.1%		51,319,050		26,745,297		65.7%	-0.2%
	\$5.00	29	211,795,889	30.2%		144,053,379		67,742,510		68.0%	0.2%
	\$7.00	6	29,799,483	4.2%		20,269,756		9,529,727		68.0%	0.0%
	\$10.00	13	92,884,340	13.2%		65,007,571		27,876,769		70.0%	0.0%
	\$20.00	7	68,850,680	9.8%		49,416,103		19,434,577		71.8%	-0.1%
	\$25.00	1	2,379,850	0.3%		1,730,972		648,878		72.7%	0.1%
	\$30.00	3	6,465,840	0.9%		4,686,498		1,779,342		72.5%	0.2%
	\$50.00	3	30,120,800	4.3%		21,781,640		8,339,160		72.3%	0.2%
Total		135	\$701,382,756			\$472,929,151		\$228,453,605		67.4%	-0.2%
Variance	\$1.00	-4	-5,403,956		-8.3%	-3,162,445	-8.1%	-2,241,511	-8.7%	0.14%	
2009 to	\$2.00	-12	-3,888,246		-3.1%	-2,721,631	-3.3%	-1,166,615	-2.7%	-0.16%	
2008	\$3.00	2	20,712,765		36.1%	13,506,105	35.7%	7,206,660	36.9%	-0.19%	
	\$5.00	-4	16,298,089		8.3%	11,519,238	8.7%	4,778,851	7.6%	0.22%	
	\$7.00	-4	-24,323,698		-44.9%	-16,525,709	-44.9%	-7,797,989	-45.0%	0.04%	
	\$10.00	-2	-19,283,536		-17.2%	-13,519,256	-17.2%	-5,764,280	-17.1%	-0.02%	
	\$20.00	1	24,292,400		54.5%	17,372,935	54.2%	6,919,465	55.3%	-0.14%	
	\$25.00	-1	-30,214,625		-92.7%	-21,932,105	-92.7%	-8,282,520	-92.7%	0.14%	
	\$30.00	1	-2,825,430		-30.4%	-2,029,577	-30.2%	-795,853	-30.9%	0.20%	
	\$50.00	1	-13,350,650		-30.7%	-9,575,724	-30.5%	-3,774,926	-31.2%	0.18%	
Total		-22	-\$37,986,887		-5.1%	-\$27,068,168	-5.4%	-\$10,918,719	-4.6%	-0.18%	

Texas Lottery Commission
Instant Tickets by Price Point
Sales, Prize Expense, Sales Contribution and Payout Percentage With Year Over Year Changes
Unaudited

Notes - Instant Ticket Variances						
		FY 2009		FY 2008		Difference
Sales	\$1 - \$7	\$500,681,246		\$497,286,292		\$3,394,954
Prize Exp.	\$1 - \$7	\$330,306,367		\$327,690,809		\$2,615,558
Sales Cont.	\$1 - \$7	\$170,374,879		\$169,595,483		\$779,396
Prize Exp. %	\$1 - \$7	66.0%		65.9%		0.1%
		FY 2009		FY 2008		Difference
Sales	\$10 - \$50	\$200,701,510		\$242,083,351		-\$41,381,841
Prize Exp.	\$10 - \$50	\$142,622,784		\$172,306,511		-\$29,683,727
Sales Cont.	\$10 - \$50	\$58,078,726		\$69,776,840		-\$11,698,114
Prize Exp. %	\$10 - \$50	71.1%		71.2%		-0.1%
		FY 2009		FY 2008		Difference
Sales	Instant	\$701,382,756		\$739,369,643		-\$37,986,887
Prize Exp.	Instant	\$472,929,151		\$499,997,319		-\$27,068,168
Sales Cont.	Instant	\$228,453,605		\$239,372,324		-\$10,918,719
Prize Exp. %	Instant	67.4%		67.6%		-0.2%

		FY 2009		FY 2008		Difference
Sales	\$1 - \$10	\$593,565,586		\$609,454,168		-\$15,888,582
Prize Exp.	\$1 - \$10	\$395,313,938		\$406,217,635		-\$10,903,698
Sales Cont.	\$1 - \$10	\$198,251,648		\$203,236,533		-\$4,984,884
Prize Exp. %	\$1 - \$10	66.6%		66.7%		-0.1%
		FY 2009		FY 2008		Difference
Sales	\$20 - \$50	\$107,817,170		\$129,915,475		-\$22,098,305
Prize Exp.	\$20 - \$50	\$77,615,213		\$93,779,684		-\$16,164,471
Sales Cont.	\$20 - \$50	\$30,201,957		\$36,135,791		-\$5,933,834
Prize Exp. %	\$20 - \$50	72.0%		72.2%		-0.2%
		FY 2009		FY 2008		Difference
Sales	Instant	\$701,382,756		\$739,369,643		-\$37,986,887
Prize Exp.	Instant	\$472,929,151		\$499,997,319		-\$27,068,168
Sales Cont.	Instant	\$228,453,605		\$239,372,324		-\$10,918,719
Prize Exp. %	Instant	67.4%		67.6%		-0.2%

Texas Lottery Commission
Weekly Sales Summary
& Comparison to Previous Week
 Unaudited

	Week Ending 12/06/08		Week Ending 11/29/08			
	<u>THIS WEEK</u>	% of Sales	<u>LAST WEEK</u>	% of Sales	<u>\$ change</u>	<u>% change</u>
Total Sales	<u>\$77,095,640</u>		<u>\$69,597,317</u>		<u>\$7,498,323</u>	10.77%
Instant Tickets	<u>\$56,731,851</u>	73.6%	<u>\$52,199,741</u>	75.0%	<u>\$4,532,110</u>	8.68%
Lotto Texas	\$3,794,991	4.9%	\$3,585,374	5.2%	\$209,617	5.85%
Pick 3	\$5,752,593	7.5%	\$5,340,784	7.7%	\$411,810	7.71%
Pick 3 Sum It Up	\$121,664	0.2%	\$111,443	0.2%	\$10,221	9.17%
Cash 5	\$1,416,446	1.8%	\$1,315,233	1.9%	\$101,213	7.70%
Texas Two Step	\$780,328	1.0%	\$686,077	1.0%	\$94,251	13.74%
Mega Millions	\$6,238,355	8.1%	\$4,441,715	6.4%	\$1,796,640	40.45%
Megaplier	\$1,270,214	1.6%	\$968,906	1.4%	\$301,308	31.10%
Daily 4	\$881,842	1.1%	\$845,476	1.2%	\$36,366	4.30%
Daily 4 Sum It Up	<u>\$107,357</u>	0.1%	<u>\$102,569</u>	0.1%	<u>\$4,788</u>	4.67%
Total Online Sales	<u>\$20,363,789</u>		<u>\$17,397,576</u>		<u>\$2,966,213</u>	17.05%

* Totals may not sum due to rounding.

Texas Lottery Commission
Weekly Sales Summary
Unaudited

INSTANT TICKETS
TOP TEN SELLING GAMES

For the Week Ending : 12/06/08

Rank	Price Point	Game	Sales (Millions)
1	\$ 5	HOLIDAY TREASURES	\$ 4.675
2	\$ 10	JINGLE JUMBO BUCKS	\$ 4.318
3	\$ 5	MERRY MONEY	\$ 2.761
4	\$ 20	TEXAS \$50 MILLION CLUB	\$ 2.602
5	\$ 5	FANTASTIC 5'S	\$ 2.447
6	\$ 7	SIZZLIN' RED 7'S	\$ 2.382
7	\$ 10	SET FOR LIFE	\$ 1.867
8	\$ 50	\$130,000,000 PLATINUM PAYOUT	\$ 1.771
9	\$ 2	BREAK THE BANK	\$ 1.711
10	\$ 2	SILVER BELLS	\$ 1.664

Texas Lottery Commission
Prize Payout Tracking Report
Unaudited

Through Week Ending 12/06/08

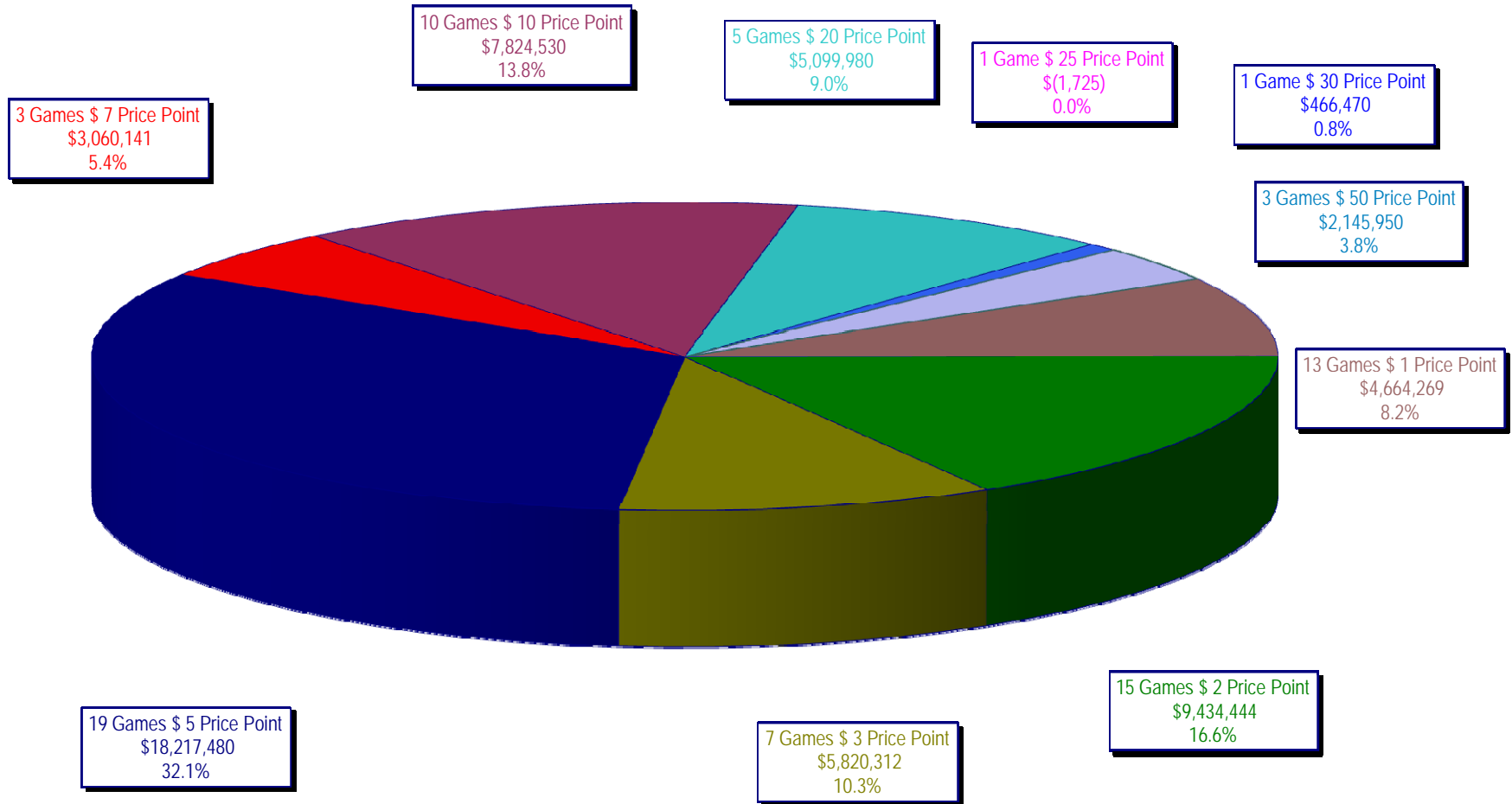
On-Line Sales

		FY Sales Through Week Ending 12/6/2008		FY Prize Expense Through Week Ending 12/6/2008	Actual* Prize Payout	Base Payout (Prize Pool)
Lotto	\$	47,955,842	\$	24,073,228	50.20%	50.00%
Pick 3		72,609,536		34,636,600	47.70%	50.00%
Pick 3 Sum It Up		1,549,638		684,601	44.18%	50.00%
Cash 5		18,690,687		9,441,747	50.52%	50.00%
Texas Two-Step		12,157,675		6,429,009	52.88%	50.00%
Mega Millions		41,433,946		18,902,674	45.62%	50.00%**
Megaplier		10,164,861		3,003,858	29.55%	N/A
Daily 4		10,986,978		4,953,250	45.08%	50.00%
Daily 4-Sum It Up		1,439,908		533,370	37.04%	50.00%
Totals	\$	216,989,070	\$	102,658,337	47.31%	

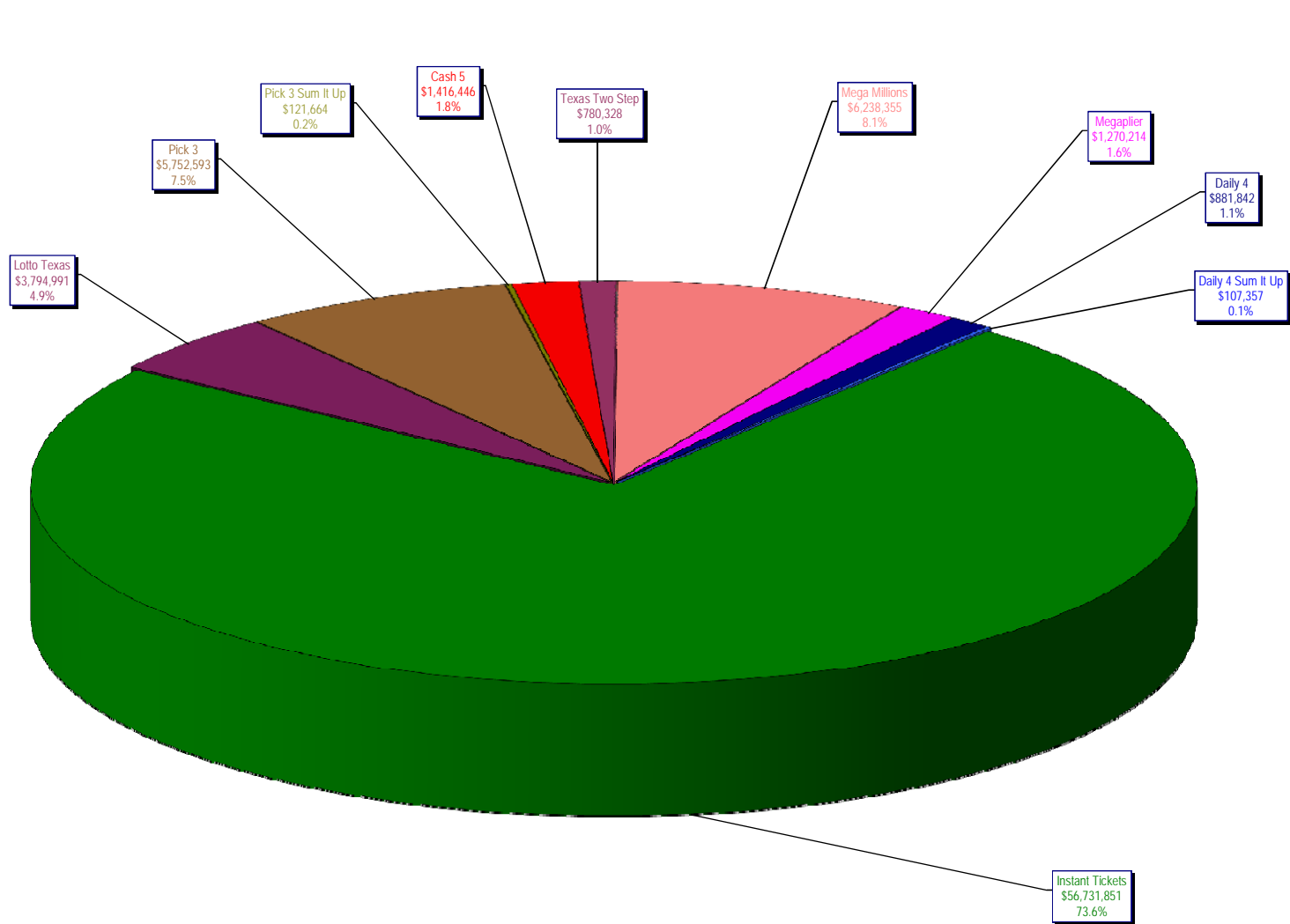
* Before Unclaimed Prizes

** Estimated; depends on # of guaranteed prizes won in Texas

Texas Lottery Commission
Instant Ticket Sales
For the Week Ending 12/06/2008
(Unaudited)



Texas Lottery Commission
All Game Sales
For the Week Ending 12/06/2008
(Unaudited)



* Totals may not sum due to rounding.

