



*WEEKLY SALES SUMMARY*

Unaudited

**Week Ending: 12/07/2013**

Texas Lottery Commission  
Fiscal Year to Date Sales Comparison  
Unaudited

Through the Week Ending 12/07/2013 (14 Weeks)

Sales by Game	FY 2012 *	FY 2013 **	FY 2014	\$ Change		% Change	
				FY 2014 to FY 2012	FY 2014 to FY 2013	FY 2014 to FY 2012	FY 2014 to FY 2013
Instants	\$ 770,432,650	\$ 814,831,015	\$ 839,427,932	\$ 68,995,282	\$ 24,596,917	9.0%	3.0%
Lotto Texas	49,347,717	43,873,591	35,622,052	-13,725,665	-8,251,539	-27.8%	-18.8%
Lotto Extra	-	-	4,540,308	4,540,308	4,540,308	-	-
Pick 3	72,899,183	72,185,092	67,574,141	-5,325,042	-4,610,951	-7.3%	-6.4%
Pick 3 Sum It Up	1,482,301	1,357,344	1,333,860	-148,442	-23,484	-10.0%	-1.7%
Cash Five	17,741,614	15,468,757	14,118,474	-3,623,140	-1,350,283	-20.4%	-8.7%
Texas Two Step	17,006,934	14,490,944	14,851,230	-2,155,704	360,286	-12.7%	2.5%
Mega Millions	38,862,732	29,504,286	42,698,434	3,835,702	13,194,148	9.9%	44.7%
Megaplier	8,830,853	6,834,162	9,359,250	528,397	2,525,088	6.0%	36.9%
Daily 4	17,116,126	18,889,880	22,319,089	5,202,964	3,429,209	30.4%	18.2%
Daily 4 Sum It Up	1,281,757	1,280,683	1,376,413	94,656	95,731	7.4%	7.5%
Powerball	35,118,194	95,247,890	63,169,679	28,051,485	-32,078,211	79.9%	-33.7%
Power Play	7,664,553	9,023,794	7,337,529	-327,024	-1,686,265	-4.3%	-18.7%
All or Nothing	-	26,561,831	12,686,974	12,686,974	-13,874,857	-	-52.2%
<b>Total</b>	<b>\$ 1,037,784,614</b>	<b>\$ 1,149,549,268</b>	<b>\$ 1,136,415,365</b>	<b>\$ 98,630,751</b>	<b>\$ -13,133,904</b>	<b>9.5%</b>	<b>-1.1%</b>

\* 3 extra days

\*\* 1 extra day

Texas Lottery Commission  
Fiscal Year to Date Cumulative Average Sales Comparison  
Unaudited

Through the Week Ending 12/07/2013 (14 Weeks)

Sales by Game	FY 2012	FY 2013	FY 2014
Instant	\$ 7,628,046	\$ 8,230,616	\$ 8,565,591
Lotto Texas	488,591	443,168	363,490
Lotto Extra	-	-	46,330
Pick 3	721,774	729,142	689,532
Pick 3 Sum It Up	14,676	13,711	13,611
Cash Five	175,660	156,250	144,066
Texas Two Step	168,385	146,373	151,543
Mega Millions	384,780	298,023	435,698
Megaplier	87,434	69,032	95,503
Daily 4	169,467	190,807	227,746
Daily 4 Sum It Up	12,691	12,936	14,045
Powerball	347,705	962,100	644,589
Power Play	75,887	91,149	74,873
All or Nothing	- *	291,888	129,459
<b>Total</b>	<b>\$ <u>10,275,095</u></b>	<b>\$ <u>11,635,196</u></b>	<b>\$ <u>11,596,075</u></b>

thru 12/10/2011  
101 days

thru 12/08/2012  
99 days  
\*  
91 days

thru 12/07/2013  
98 days

Texas Lottery Commission  
Fiscal Year Over Year Change in Sales  
Unaudited  
FY 2014 Compared to FY 2013

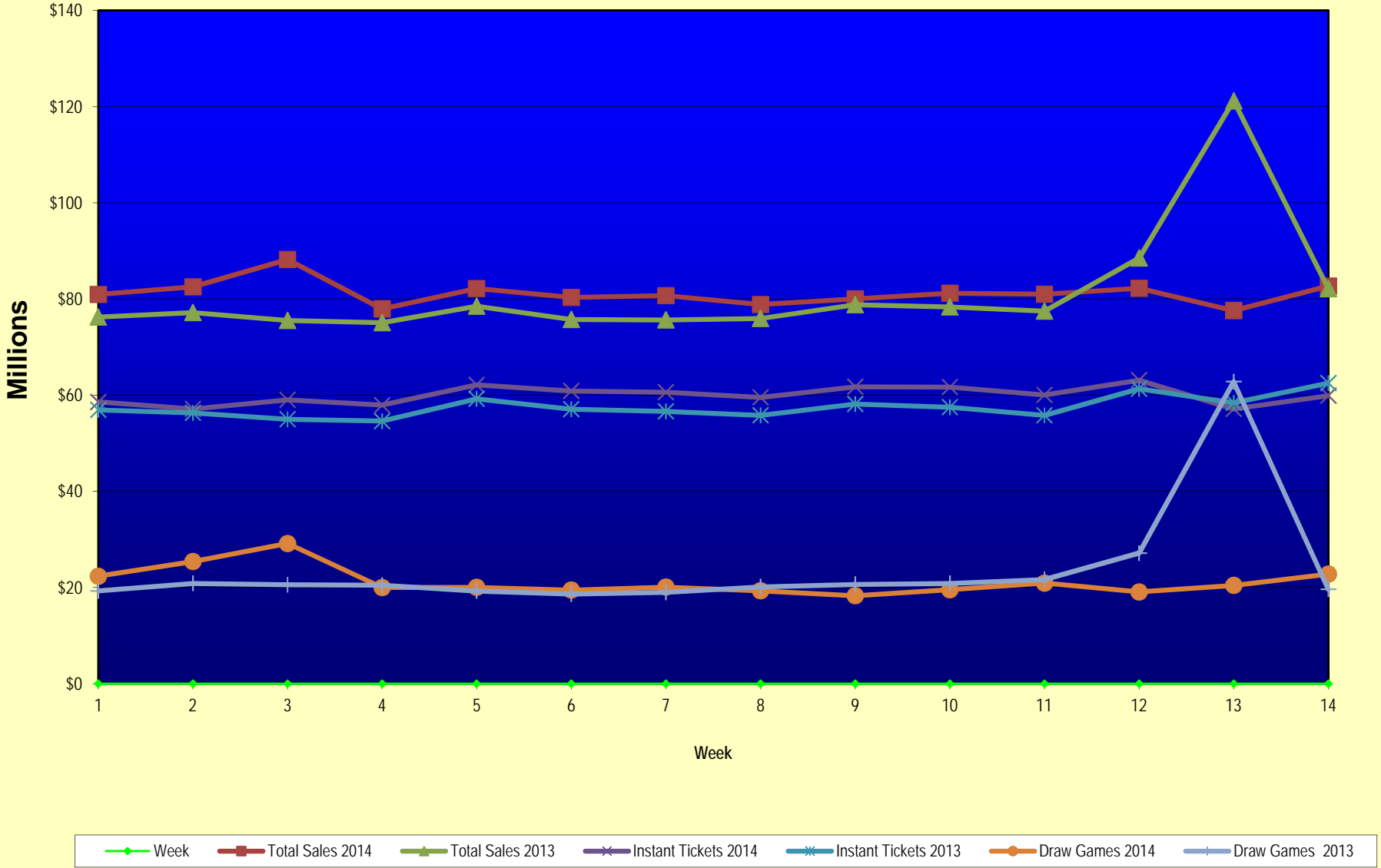
			INSTANT TICKETS				DRAW GAMES				TOTAL SALES			
FY 2014			% change -				% change -				% change -			
Week	Week	Ending	FY 2014	FY 2013	Difference	Cumulative Sales	FY 2014	FY 2013	Difference	Cumulative Sales	FY 2014	FY 2013	Difference	Cumulative Sales
0	9/1/2013 *		\$0	\$9,611,328	(\$9,611,328)	-100.0%	\$0	\$3,712,535	(\$3,712,535)	-100.0%	\$0	\$13,323,863	(\$13,323,863)	-100.0%
1	9/7/2013		\$58,587,757	\$56,941,761	\$1,645,996	2.9%	\$22,369,499	\$19,305,417	\$3,064,082	15.9%	\$80,957,256	\$76,247,178	\$4,710,078	6.2%
2	9/14/2013		\$57,135,931	\$56,302,875	\$833,056	1.5%	\$25,412,980	\$20,857,230	\$4,555,750	21.8%	\$82,548,911	\$77,160,105	\$5,388,806	7.0%
3	9/21/2013		\$59,018,194	\$54,974,438	\$4,043,756	7.4%	\$29,161,241	\$20,570,277	\$8,590,964	41.8%	\$88,179,435	\$75,544,715	\$12,634,720	16.7%
4	9/28/2013		\$57,927,984	\$54,606,674	\$3,321,310	6.1%	\$20,012,313	\$20,462,690	(\$450,378)	-2.2%	\$77,940,297	\$75,069,364	\$2,870,933	3.8%
5	10/5/2013		\$62,146,816	\$59,223,327	\$2,923,489	4.9%	\$20,043,557	\$19,279,973	\$763,584	4.0%	\$82,190,373	\$78,503,300	\$3,687,073	4.7%
6	10/12/2013		\$60,867,582	\$57,075,606	\$3,791,976	6.6%	\$19,480,962	\$18,638,467	\$842,496	4.5%	\$80,348,544	\$75,714,073	\$4,634,472	6.1%
7	10/19/2013		\$60,612,193	\$56,630,134	\$3,982,059	7.0%	\$20,079,610	\$18,998,943	\$1,080,668	5.7%	\$80,691,803	\$75,629,077	\$5,062,727	6.7%
8	10/26/2013		\$59,548,277	\$55,789,743	\$3,758,534	6.7%	\$19,319,928	\$20,130,190	(\$810,262)	-4.0%	\$78,868,205	\$75,919,933	\$2,948,273	3.9%
9	11/2/2013		\$61,710,236	\$58,142,777	\$3,567,459	6.1%	\$18,308,976	\$20,638,008	(\$2,329,032)	-11.3%	\$80,019,212	\$78,780,785	\$1,238,427	1.6%
10	11/9/2013		\$61,668,594	\$57,484,804	\$4,183,790	7.3%	\$19,555,070	\$20,862,872	(\$1,307,802)	-6.3%	\$81,223,664	\$78,347,676	\$2,875,988	3.7%
11	11/16/2013		\$60,057,025	\$55,805,228	\$4,251,797	7.6%	\$20,930,071	\$21,660,705	(\$730,634)	-3.4%	\$80,987,096	\$77,465,933	\$3,521,163	4.5%
12	11/23/2013		\$63,118,266	\$61,331,977	\$1,786,289	2.9%	\$19,086,770	\$27,172,853	(\$8,086,083)	-29.8%	\$82,205,036	\$88,504,830	(\$6,299,794)	-7.1%
13	11/30/2013		\$57,145,294	\$58,420,598	(\$1,275,304)	-2.2%	\$20,434,618	\$62,797,943	(\$42,363,326)	-67.5%	\$77,579,912	\$121,218,541	(\$43,638,630)	-36.0%
14	12/7/2013		\$59,883,783	\$62,489,745	(\$2,605,962)	-4.2%	\$22,791,842	\$19,630,155	\$3,161,687	16.1%	\$82,675,625	\$82,119,900	\$555,725	0.7%
15	12/14/2013			\$59,661,880				\$20,064,982				\$79,726,862		
16	12/21/2013			\$63,556,886				\$19,084,653				\$82,641,539		
17	12/28/2013			\$63,547,886				\$17,359,874				\$80,907,760		
18	1/4/2014			\$60,452,721				\$18,833,047				\$79,285,768		
19	1/11/2014			\$58,862,997				\$18,879,167				\$77,742,164		
20	1/18/2014			\$58,494,057				\$19,258,004				\$77,752,061		
21	1/25/2014			\$57,871,744				\$20,093,215				\$77,964,959		
22	2/1/2014			\$61,846,715				\$21,032,335				\$82,879,050		
23	2/8/2014			\$70,374,906				\$21,183,638				\$91,558,544		
24	2/15/2014			\$71,002,438				\$19,295,197				\$90,297,635		
25	2/22/2014			\$71,203,934				\$19,729,989				\$90,933,923		
26	3/1/2014			\$74,551,567				\$20,278,327				\$94,829,894		
27	3/8/2014			\$75,360,138				\$21,447,763				\$96,807,901		
28	3/15/2014			\$70,065,528				\$22,055,563				\$92,121,091		
29	3/22/2014			\$70,137,284				\$28,709,024				\$98,846,308		
30	3/29/2014			\$68,758,522				\$18,597,091				\$87,355,613		
31	4/5/2014			\$73,270,054				\$20,048,992				\$93,319,046		
32	4/12/2014			\$64,738,900				\$19,697,793				\$84,436,693		
33	4/19/2014			\$63,252,072				\$20,245,083				\$83,497,155		
34	4/26/2014			\$62,766,647				\$21,162,888				\$83,929,535		
35	5/3/2014			\$66,251,082				\$23,628,101				\$89,879,183		
36	5/10/2014			\$65,748,723				\$26,735,480				\$92,484,203		
37	5/17/2014			\$63,348,463				\$61,124,604				\$124,473,067		
38	5/24/2014			\$60,537,133				\$18,730,138				\$79,267,271		
39	5/31/2014			\$58,547,555				\$18,317,891				\$76,865,446		
40	6/7/2014			\$62,113,508				\$18,374,935				\$80,488,443		

Texas Lottery Commission  
Fiscal Year Over Year Change in Sales  
Unaudited  
FY 2014 Compared to FY 2013

			INSTANT TICKETS				DRAW GAMES				TOTAL SALES			
FY 2014			FY 2014	FY 2013	Difference	% change - Cumulative Sales	FY 2014	FY 2013	Difference	% change - Cumulative Sales	FY 2014	FY 2013	Difference	% change - Cumulative Sales
Week	Week	Ending												
41	6/14/2014			\$58,988,468				\$18,101,981				\$77,090,449		
42	6/21/2014			\$61,199,484				\$18,675,967				\$79,875,451		
43	6/28/2014			\$59,435,096				\$18,026,964				\$77,462,060		
44	7/5/2014			\$63,457,072				\$18,556,140				\$82,013,212		
45	7/12/2014			\$60,046,267				\$17,669,864				\$77,716,131		
46	7/19/2014			\$61,952,164				\$19,002,142				\$80,954,306		
47	7/26/2014			\$58,251,955				\$20,309,411				\$78,561,366		
48	8/2/2014			\$63,652,675				\$25,295,830				\$88,948,505		
49	8/9/2014			\$56,800,305				\$33,349,261				\$90,149,566		
50	8/16/2014			\$55,607,891				\$17,625,289				\$73,233,180		
51	8/23/2014			\$55,988,956				\$18,099,850				\$74,088,806		
52	8/30/2014			\$56,059,026				\$20,294,026				\$76,353,052		
Total thru Current Week			\$839,427,932	\$814,831,015	\$24,596,917	3.0%	\$296,987,433	\$334,718,253	(\$37,730,821)	-11.3%	\$1,136,415,365	\$1,149,549,268	(\$13,133,904)	-1.1%
Fiscal Year Total			\$839,427,932	\$3,222,593,714			\$296,987,433	\$1,153,692,742			\$1,136,415,365	\$4,376,286,456		

\* FY 13 includes 1 day

### Texas Lottery Commission Fiscal Year Over Year Change in Sales



Note: Week 1 is not a full week of sales as this report is prepared on a Fiscal Year basis.

Texas Lottery Commission  
**Instant Tickets by Price Point**  
Sales, Prize Expense, Sales Contribution and Payout Percentage With Year Over Year Changes  
Unaudited

Fiscal Year	Price Point	# of Active Games	FY Sales	% of Instant Ticket Sales	Year over Year Change in Sales	FY Prize Expense	Year over Year Change in Prize Expense	FY Sales Contribution	Year over Year Change in Contribution	Average Prize Payout %	Year over Year Change in Payout %
2013	\$1.00	25	48,640,506	6.0%		29,798,620		18,841,886		61.3%	1.0%
thru	\$2.00	26	104,438,322	12.8%		67,898,972		36,539,350		65.0%	-0.1%
12/8/2012	\$3.00	14	106,021,209	13.0%		69,538,700		36,482,509		65.6%	0.1%
	\$5.00	41	246,790,060	30.3%		167,559,007		79,231,053		67.9%	-0.2%
	\$7.00	2	13,669,418	1.7%		9,290,647		4,378,771		68.0%	0.0%
	\$10.00	11	138,426,690	17.0%		97,786,437		40,640,253		70.6%	-0.4%
	\$20.00	7	121,738,760	14.9%		91,128,053		30,610,707		74.9%	0.1%
	\$50.00	3	35,106,050	4.3%		27,257,094		7,848,956		77.6%	0.0%
<b>Total</b>		<b>129</b>	<b>\$814,831,015</b>			<b>\$560,257,530</b>		<b>\$254,573,485</b>		<b>68.7%</b>	<b>0.2%</b>
2014	\$1.00	22	48,227,323	5.7%		28,904,526		19,322,797		59.9%	-1.3%
thru	\$2.00	28	99,974,204	11.9%		64,917,485		35,056,719		64.9%	-0.1%
12/7/2013	\$3.00	14	90,891,645	10.8%		59,496,369		31,395,276		65.5%	-0.1%
	\$5.00	37	276,671,620	33.0%		187,959,759		88,711,861		67.9%	-0.1%
	\$7.00	0	0	0.0%		0		-		0.0%	0.0%
	\$10.00	12	158,907,140	18.9%		112,181,079		46,726,061		70.6%	-0.7%
	\$20.00	8	133,066,900	15.9%		99,644,526		33,422,374		74.9%	0.0%
	\$50.00	2	31,689,100	3.8%		24,601,809		7,087,291		77.6%	0.0%
<b>Total</b>		<b>123</b>	<b>\$839,427,932</b>			<b>\$577,705,552</b>		<b>\$261,722,380</b>		<b>68.8%</b>	<b>-0.2%</b>
Variance	\$1.00	-3	-413,183		-0.8%	-894,095	-3.0%	480,912	2.6%	-1.33%	
2014 to	\$2.00	2	-4,464,118		-4.3%	-2,981,488	-4.4%	-1,482,630	-4.1%	-0.08%	
2013	\$3.00	0	-15,129,564		-14.3%	-10,042,331	-14.4%	-5,087,233	-13.9%	-0.13%	
	\$5.00	-4	29,881,560		12.1%	20,400,752	12.2%	9,480,808	12.0%	0.04%	
	\$7.00	-2	-13,669,418		-100.0%	-9,290,647	-100.0%	-4,378,771	-100.0%	-67.97%	
	\$10.00	1	20,480,450		14.8%	14,394,642	14.7%	6,085,808	15.0%	-0.05%	
	\$20.00	1	11,328,140		9.3%	8,516,474	9.3%	2,811,666	9.2%	0.03%	
	\$50.00	-1	-3,416,950		-9.7%	-2,655,285	-9.7%	-761,665	-9.7%	-0.01%	
<b>Total</b>		<b>-6</b>	<b>\$24,596,917</b>		<b>3.0%</b>	<b>\$17,448,022</b>	<b>3.1%</b>	<b>\$7,148,895</b>	<b>2.8%</b>	<b>0.10%</b>	

Notes - Instant Ticket Variances

Texas Lottery Commission  
**Instant Tickets by Price Point**  
**Sales, Prize Expense, Sales Contribution and Payout Percentage With Year Over Year Changes**  
 Unaudited

			FY 2014		FY 2013	Difference
Sales	\$1 - \$7	1	\$515,764,792		\$519,559,515	-\$3,794,723
Prize Exp.	\$1 - \$7	1	\$341,278,138		\$344,085,947	-\$2,807,809
Sales Cont.	\$1 - \$7	1	\$174,486,654		\$175,473,568	-\$986,914
Prize Exp. %	\$1 - \$7	1	66.2%		66.2%	-0.1%
			FY 2014		FY 2013	Difference
Sales	\$10 - \$50	2	\$323,663,140		\$295,271,500	\$28,391,640
Prize Exp.	\$10 - \$50	2	\$236,427,414		\$216,171,583	\$20,255,831
Sales Cont.	\$10 - \$50	1	\$87,235,726		\$79,099,917	\$8,135,809
Prize Exp. %	\$10 - \$50	2	73.0%		73.2%	-0.2%
			FY 2014		FY 2013	Difference
Sales	Instant		\$839,427,932		\$814,831,015	\$24,596,917
Prize Exp.	Instant		\$577,705,552		\$560,257,530	\$17,448,022
Sales Cont.	Instant		\$261,722,380		\$254,573,485	\$7,148,895
Prize Exp. %	Instant		68.8%		68.8%	0.1%

			FY 2014		FY 2013	Difference
Sales	\$1 - \$10		\$674,671,932		\$657,986,205	\$16,685,727
Prize Exp.	\$1 - \$10		\$453,459,217		\$441,872,384	\$11,586,833
Sales Cont.	\$1 - \$10		\$221,212,715		\$216,113,821	\$5,098,894
Prize Exp. %	\$1 - \$10		67.2%		67.2%	0.1%
			FY 2014		FY 2013	Difference
Sales	\$20 - \$50		\$164,756,000		\$156,844,810	\$7,911,190
Prize Exp.	\$20 - \$50		\$124,246,335		\$118,385,146	\$5,861,189
Sales Cont.	\$20 - \$50		\$40,509,665		\$38,459,664	\$2,050,001
Prize Exp. %	\$20 - \$50		75.4%		75.5%	-0.1%
			FY 2014		FY 2013	Difference
Sales	Instant		\$839,427,932		\$814,831,015	\$24,596,917
Prize Exp.	Instant		\$577,705,552		\$560,257,530	\$17,448,022
Sales Cont.	Instant		\$261,722,380		\$254,573,485	\$7,148,895
Prize Exp. %	Instant		68.8%		68.8%	0.1%



Texas Lottery Commission  
**Weekly Sales Summary**  
**& Comparison to Previous Week**  
 Unaudited

	Week Ending 12/07/2013	% of Sales	Week Ending 11/30/2013	% of Sales	\$ change	% change
	<u>THIS WEEK</u>		<u>LAST WEEK</u>			
Total Sales	<u>\$82,675,625</u>		<u>\$77,579,912</u>		<u>\$5,095,713</u>	6.57%
Instant Tickets	<u>\$59,883,783</u>	72.4%	<u>\$57,145,294</u>	73.7%	<u>\$2,738,489</u>	4.79%
Lotto	\$2,331,362	2.8%	\$2,347,756	3.0%	-\$16,394	-0.70%
Lotto Extra	\$316,270	0.4%	\$316,771	0.4%	-\$501	-0.16%
Pick 3	\$4,952,771	6.0%	\$4,679,492	6.0%	\$273,279	5.84%
Pick 3 Sum It Up	\$96,865	0.1%	\$88,857	0.1%	\$8,008	9.01%
Cash Five	\$1,015,927	1.2%	\$973,403	1.3%	\$42,524	4.37%
Texas Two Step	\$1,020,004	1.2%	\$776,086	1.0%	\$243,918	31.43%
Mega Millions	\$5,741,567	6.9%	\$4,569,734	5.9%	\$1,171,833	25.64%
Megaplier	\$1,198,980	1.5%	\$1,000,837	1.3%	\$198,143	19.80%
Daily 4	\$1,631,318	2.0%	\$1,608,510	2.1%	\$22,809	1.42%
Daily 4 Sum It Up	\$101,968	0.1%	\$94,189	0.1%	\$7,779	8.26%
Powerball	\$3,155,910	3.8%	\$2,810,754	3.6%	\$345,156	12.28%
Power Play	\$414,551	0.5%	\$382,022	0.5%	\$32,529	8.51%
All or Nothing	\$814,350	1.0%	\$786,208	1.0%	\$28,142	3.58%
Total Draw Game Sales	<u>\$22,791,842</u>		<u>\$20,434,618</u>		<u>\$2,357,224</u>	11.54%

\* Totals may not sum due to rounding.

Texas Lottery Commission  
Weekly Sales Summary  
Unaudited

INSTANT TICKETS  
TOP TEN SELLING GAMES

For the Week Ending: 12/07/13

Rank	Price Point	Game	Sales (Millions)
1	\$ 10	GIFTS GALORE	\$ 3.490
2	\$ 5	MERRY MONEY	\$ 3.377
3	\$ 20	HOLIDAY MILLIONS	\$ 3.104
4	\$ 10	BIG WINNING NUMBERS	\$ 3.017
5	\$ 10	SUPER WEEKLY GRAND	\$ 2.256
6	\$ 5	TRIM THE TREE	\$ 2.119
7	\$ 5	RED DIAMOND 7'S	\$ 2.034
8	\$ 5	\$75,000 CASHWORD-O-RAMA	\$ 1.828
9	\$ 20	\$1,000,000 JACKPOT	\$ 1.789
10	\$ 5	BONUS WEEKLY GRAND	\$ 1.785

Texas Lottery Commission  
Prize Payout Tracking Report  
Unaudited

Through the Week Ending 12/07/13

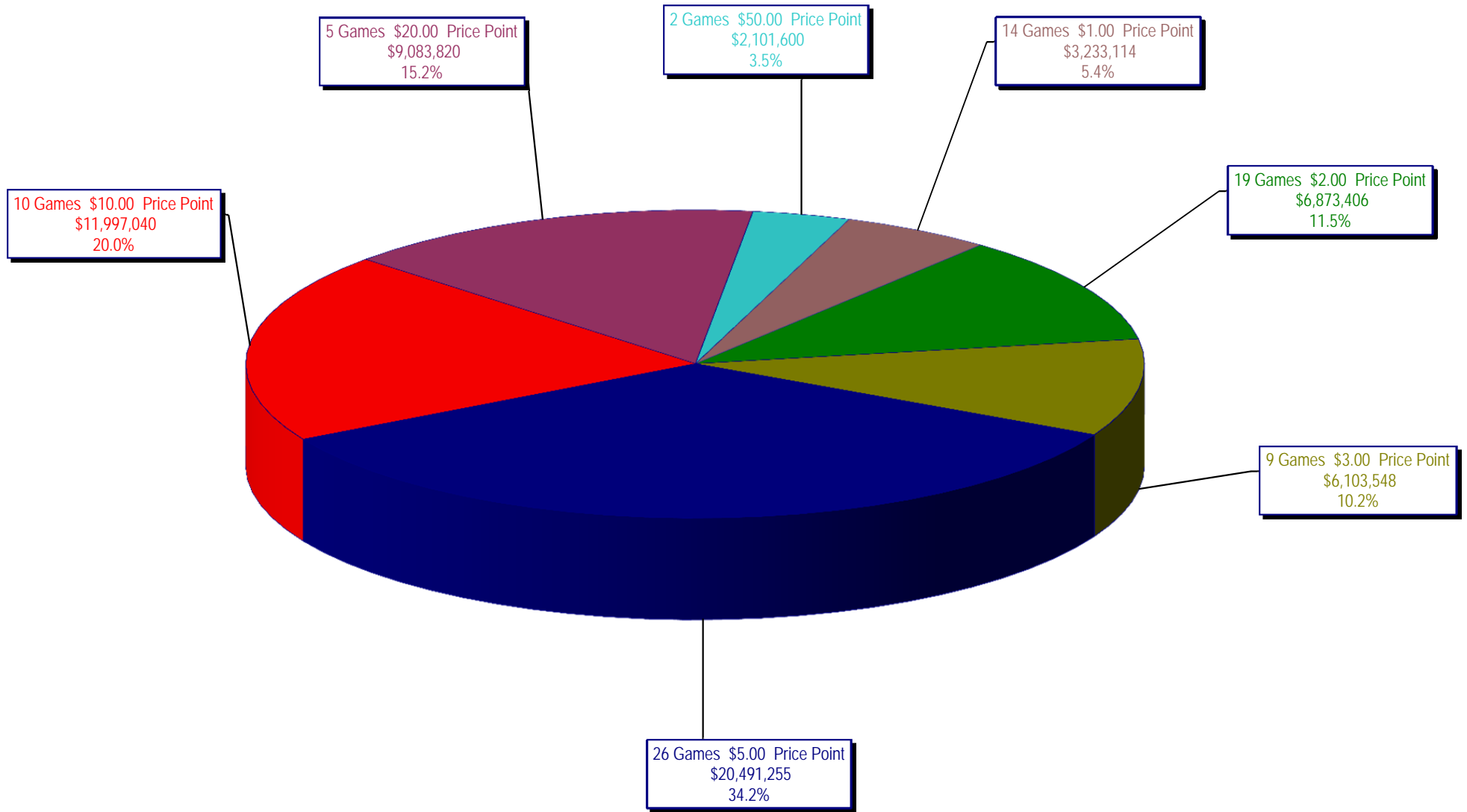
Draw Game Sales

		FY Sales Through Week Ending 12/7/2013		FY Prize Expense Through Week Ending 12/7/2013	Actual* Prize Payout	Base Payout (Prize Pool)
Lotto	\$	35,622,052	\$	18,981,196	53.28%	54.00%
Lotto Extra		4,540,308		2,457,620	54.13%	53.70%
Pick 3		67,574,141		33,591,080	49.71%	50.00%
Pick 3 Sum It Up		1,333,860		616,996	46.26%	50.00%
Cash Five		14,118,474		7,059,237	50.00%	50.00%
Texas Two Step		14,851,230		7,677,233	51.69%	50.00%
Mega Millions		42,698,434		21,708,340	50.84%	50.00%**
Megaplier		9,359,250		5,387,564	57.56%	N/A
Daily 4		22,319,089		12,234,175	54.81%	50.00%
Daily 4 Sum It Up		1,376,413		1,091,763	79.32%	50.00%
Powerball		63,169,679		30,560,940	48.38%	50.00%**
Power Play		7,337,529		2,607,046	35.53%	N/A
All or Nothing		12,686,974		6,544,796	51.59%	55.98%
<b>Totals</b>	\$	<b>296,987,433</b>	\$	<b>150,517,987</b>	<b>50.68%</b>	

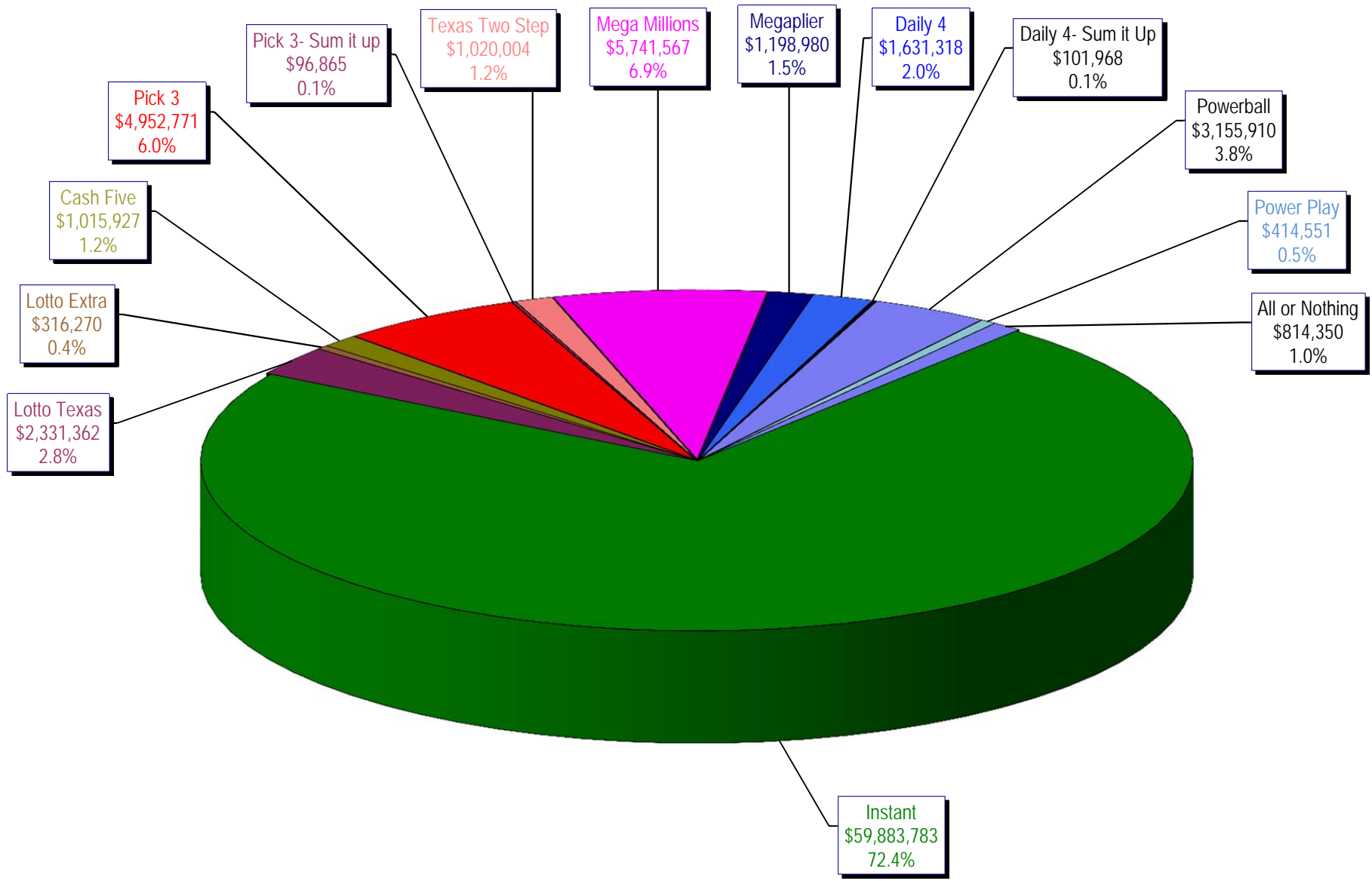
\* Before Unclaimed Prizes

\*\* Estimated; depends on # of guaranteed prizes won in Texas

Texas Lottery Commission  
Instant Ticket Sales  
For the Week Ending 12/07/13  
(Unaudited)



**Texas Lottery Commission**  
**All Game Sales**  
**For the Week Ending 12/07/13**  
**(Unaudited)**



Texas Lottery Commission - Weekly Sales Summary for FY 2014 (Unaudited)

Week Ended	Instant Games	New Games & Dates	Lotto Texas	Jackpot		Lotto Extra	Pick 3	Pick 3 Sum It Up	Cash Five	Texas Two Step	Jackpot		Mega Millions	Jackpot		Megaplier	Daily 4	Daily 4 Sum It Up	Powerball	Jackpot		Power Play	All or Nothing	Total	Per Cap.
				W	S						M	TH		T	F					W	S				
9/7/2013	58,587,757	0	2,677,829	8	9	329,933	4,945,500	89,456	1,036,149	1,417,992	600	775	2,409,195	85	95	540,148	1,453,721	84,220	5,730,736	169	203	650,070	1,004,550	80,957,256	3.11
9/14/2013	57,135,931	1554 (\$1.N); 1555 (\$2.N); 1556 (\$5.N); 1557 (\$10.N) - 09/09/13	2,667,851	9.75	10.75	331,113	4,795,787	98,347	1,011,617	1,209,874	1	200	2,942,905	106	119	623,938	1,431,261	87,188	8,313,548	245	317	861,842	1,037,710	82,548,911	3.17
9/21/2013	59,018,194	0	2,793,973	11.50	12.50	346,650	4,806,820	94,670	1,008,752	908,904	225	300	3,395,333	130	145	704,431	1,513,941	92,441	11,449,786	400	40	1,072,426	973,114	88,179,435	3.38
9/28/2013	57,927,984	1558 (\$2.N); 1523 (\$5.N) - 09/23/13	2,653,111	13.25	14	329,426	4,679,375	95,344	994,775	852,100	200	225	3,688,920	160	173	744,933	1,523,950	94,444	3,041,612	50	60	392,576	921,748	77,940,297	2.99
10/5/2013	62,146,816	0	2,758,867	15	15.75	341,320	5,022,201	105,398	1,038,159	842,921	200	200	2,878,147	189	12	615,856	1,694,849	108,583	3,263,494	70	86	416,767	956,996	82,190,373	3.15
10/12/2013	60,867,582	1560 (\$1.N); 1561 (\$5.N); 1562 (\$20.N) - 10/7/13	2,820,574	16.5	17.75	348,512	4,834,261	97,324	1,011,724	926,156	225	300	1,819,995	14	22	440,456	1,607,225	100,756	4,066,595	108	133	489,491	917,894	80,348,544	3.08
10/19/2013	60,612,193	0	2,709,127	18.5	19.5	339,742	4,805,913	93,251	998,546	1,120,862	425	575	1,852,326	29	37	442,957	1,595,838	97,700	4,606,577	156	186	533,660	883,112	80,691,803	3.10
10/26/2013	59,548,277	1563 (\$2.N); 1564 (\$5.N); 1571 (\$10.N) - 10/21/13	2,318,924	5	5.25	297,319	4,702,074	92,890	991,912	830,330	200	225	2,138,960	55	65	514,665	1,635,640	102,731	4,306,600	216	40	503,870	884,014	78,868,205	3.03
11/2/2013	61,710,236	0	2,370,679	5.5	5.75	307,933	4,842,493	96,454	1,006,508	1,034,914	300	425	2,200,241	75	87	518,514	1,660,955	106,051	2,890,169	50	60	385,390	888,676	80,019,212	3.07
11/9/2013	61,668,594	1572 (\$1.N); 1565 (\$2.N); 1524 (\$3.N); 1568 (\$5.N) - 11/4/13	2,396,719	6	6.25	311,322	4,959,973	98,589	1,019,624	1,380,347	550	750	2,599,262	99	115	596,031	1,673,137	105,122	3,109,692	70	87	407,994	897,258	81,223,664	3.12
11/16/2013	60,057,025	0	2,449,602	5	5.25	316,977	4,845,025	95,215	1,003,854	1,690,863	925	1,150	2,988,792	132	149	652,956	1,660,309	102,225	3,786,446	110	130	477,532	860,276	80,987,096	3.11
11/23/2013	63,118,266	1570 (\$5.N); 1534 (\$10.N) - 11/18/13	2,325,678	5.5	5.75	307,020	4,702,460	91,204	1,007,524	839,877	200	200	3,473,057	165	181	764,548	1,628,437	98,799	2,637,760	40	50	349,338	861,068	82,205,036	3.15
11/30/2013	57,145,294	0	2,347,756	6	6.25	316,771	4,679,492	88,857	973,403	776,086	200	225	4,569,734	205	230	1,000,837	1,608,510	94,189	2,810,754	60	70	382,022	786,208	77,579,912	2.98
12/7/2013	59,883,783	1566 (\$1.N); 1569 (\$2.N); 1573 (\$5.N) - 12/2/13	2,331,362	6.5	6.75	316,270	4,952,771	96,865	1,015,927	1,020,004	275	400	5,741,567	257	297	1,198,980	1,631,318	101,968	3,155,910	81	100	414,551	814,350	82,675,625	3.17
weekly change	4.8%		-0.7%				5.8%	9.0%	4.4%	31.4%			25.6%			19.8%	1.4%	8.3%	12.3%			8.5%	3.6%	6.6%	
	<b>SALES</b>		<b>SALES</b>			<b>SALES</b>	<b>SALES</b>	<b>SALES</b>	<b>SALES</b>	<b>SALES</b>			<b>SALES</b>		<b>SALES</b>	<b>SALES</b>	<b>SALES</b>	<b>SALES</b>	<b>SALES</b>		<b>SALES</b>	<b>SALES</b>	<b>SALES</b>	<b>% of Sales</b>	
Calendar Year to date	3,043,427,195		128,898,794			11,000,213	248,107,691	4,733,888	51,263,210	55,264,340			119,220,626		26,836,216	74,063,252	4,636,900	258,482,849			28,419,598	44,867,547	4,099,222,318	100.0%	
Fiscal Year to date 2014	839,427,932		35,622,052			4,540,308	67,574,141	1,333,860	14,118,474	14,851,230			42,698,434		9,359,250	22,319,089	1,376,413	63,169,679			7,337,529	12,686,974	1,136,415,365	100.0%	