



WEEKLY SALES SUMMARY

Unaudited

[Week Ending: 12/08/2012](#)

Texas Lottery Commission
Fiscal Year to Date Sales Comparison
Unaudited

Through the week ending 12/08/2012 (15 weeks)

Sales by Game	FY 2011 *	FY 2012 **	FY 2013	\$ Change		% Change	
				FY 2013 to FY 2011	FY 2013 to FY 2012	FY 2013 to FY 2011	FY 2013 to FY 2012
Instants	\$ 750,360,343	\$ 770,432,650	\$ 814,831,015	\$ 64,470,672	\$ 44,398,365	8.6%	5.8%
Lotto Texas	47,350,837	49,347,717	43,873,591	-3,477,246	-5,474,126	-7.3%	-11.1%
Pick 3	75,725,162	72,899,183	72,185,092	-3,540,070	-714,091	-4.7%	-1.0%
Pick 3 Sum It Up	1,538,514	1,482,301	1,357,344	-181,170	-124,958	-11.8%	-8.4%
Cash Five	17,870,829	17,741,614	15,468,757	-2,402,072	-2,272,857	-13.4%	-12.8%
Texas Two Step	13,514,126	17,006,934	14,490,944	976,818	-2,515,990	7.2%	-14.8%
Mega Millions	36,588,235	38,862,732	29,504,286	-7,083,949	-9,358,446	-19.4%	-24.1%
Megaplier	8,252,544	8,830,853	6,834,162	-1,418,382	-1,996,691	-17.2%	-22.6%
Daily 4	15,674,401	17,116,126	18,889,880	3,215,480	1,773,755	20.5%	10.4%
Daily 4 Sum It Up	1,233,056	1,281,757	1,280,683	47,627	-1,075	3.9%	-0.1%
Powerball	24,042,139	35,118,194	95,247,890	71,205,751	60,129,696	296.2%	171.2%
Power Play	5,769,369	7,664,553	9,023,794	3,254,425	1,359,241	56.4%	17.7%
All or Nothing	-	-	26,561,831	26,561,831	26,561,831	-	-
Total	\$ 997,919,554	\$ 1,037,784,614	\$ 1,149,549,268	\$ 151,629,715	\$ 111,764,655	15.2%	10.8%

* 3 extra days

** 2 extra days

Texas Lottery Commission
Fiscal Year to Date Cumulative Average Sales Comparison
Unaudited

Through the week ending 12/08/2012 (15 weeks)

Sales by Game	FY 2011	FY 2012	FY 2013
Instants	\$ 7,356,474	\$ 7,628,046	\$ 8,230,616
Lotto Texas	464,224	488,591	443,168
Pick 3	742,404	721,774	729,142
Pick 3 Sum It Up	15,083	14,676	13,711
Cash Five	175,204	175,660	156,250
Texas Two Step	132,491	168,385	146,373
Mega Millions	358,708	384,780	298,023
Megaplier	80,907	87,434	69,032
Daily 4	153,671	169,467	190,807
Daily 4 Sum It Up	12,089	12,691	12,936
Powerball	235,707	347,705	962,100
Power Play	56,562	75,887	91,149
All or Nothing	-	-	291,888 *
Total	\$ <u>9,783,525</u>	\$ <u>10,275,095</u>	\$ <u>11,635,196</u>
	thru 12/11/2010 102 days	thru 12/10/2011 101 days	thru 12/08/2012 99 days * 91 days

Texas Lottery Commission
Fiscal Year Over Year Change in Sales
Unaudited
FY 2013 Compared to FY 2012

Week	FY 2013 Week Ending	INSTANT TICKETS				DRAW GAMES				TOTAL SALES			
		FY 2013	FY 2012	Difference	% change - Cumulative Sales	FY 2013	FY 2012	Difference	% change - Cumulative Sales	FY 2013	FY 2012	Difference	% change - Cumulative Sales
1	9/1/2012**	\$9,611,328	\$25,147,181	(\$15,535,853)	-61.8%	\$3,712,535	\$9,704,561	(\$5,992,026)	-61.7%	\$13,323,863	\$34,851,742	(\$21,527,879)	-61.8%
2	9/8/2012	\$56,941,761	\$50,591,068	\$6,350,693	12.6%	\$19,305,417	\$17,681,853	\$1,623,564	9.2%	\$76,247,178	\$68,272,921	\$7,974,257	11.7%
3	9/15/2012	\$56,302,875	\$49,835,063	\$6,467,812	13.0%	\$20,857,230	\$16,842,326	\$4,014,904	23.8%	\$77,160,105	\$66,677,389	\$10,482,716	15.7%
4	9/22/2012	\$54,974,438	\$49,777,138	\$5,197,300	10.4%	\$20,570,277	\$17,504,800	\$3,065,477	17.5%	\$75,544,715	\$67,281,938	\$8,262,777	12.3%
5	9/29/2012	\$54,606,674	\$51,040,274	\$3,566,400	7.0%	\$20,462,690	\$18,653,100	\$1,809,591	9.7%	\$75,069,364	\$69,693,374	\$5,375,991	7.7%
6	10/6/2012	\$59,223,327	\$53,715,157	\$5,508,170	10.3%	\$19,279,973	\$17,225,680	\$2,054,293	11.9%	\$78,503,300	\$70,940,837	\$7,562,463	10.7%
7	10/13/2012	\$57,075,606	\$51,942,121	\$5,133,485	9.9%	\$18,638,467	\$17,854,980	\$783,487	4.4%	\$75,714,073	\$69,797,101	\$5,916,972	8.5%
8	10/20/2012	\$56,630,134	\$52,837,769	\$3,792,365	7.2%	\$18,998,943	\$19,558,519	(\$559,577)	-2.9%	\$75,629,077	\$72,396,288	\$3,232,789	4.5%
9	10/27/2012	\$55,789,743	\$52,206,644	\$3,583,099	6.9%	\$20,130,190	\$21,504,565	(\$1,374,376)	-6.4%	\$75,919,933	\$73,711,209	\$2,208,724	3.0%
10	11/3/2012	\$58,142,777	\$56,265,310	\$1,877,467	3.3%	\$20,638,008	\$20,870,086	(\$232,079)	-1.1%	\$78,780,785	\$77,135,396	\$1,645,389	2.1%
11	11/10/2012	\$57,484,804	\$55,682,645	\$1,802,159	3.2%	\$20,862,872	\$17,862,404	\$3,000,468	16.8%	\$78,347,676	\$73,545,049	\$4,802,627	6.5%
12	11/17/2012	\$55,805,228	\$54,978,079	\$827,149	1.5%	\$21,660,705	\$17,879,985	\$3,780,721	21.1%	\$77,465,933	\$72,858,064	\$4,607,870	6.3%
13	11/24/2012	\$61,331,977	\$53,942,448	\$7,389,529	13.7%	\$27,172,853	\$16,877,145	\$10,295,708	61.0%	\$88,504,830	\$70,819,593	\$17,685,237	25.0%
14	12/1/2012	\$58,420,598	\$57,153,469	\$1,267,129	2.2%	\$62,797,943	\$18,298,636	\$44,499,307	243.2%	\$121,218,541	\$75,452,105	\$45,766,436	60.7%
15	12/8/2012	\$62,489,745	\$55,318,284	\$7,171,461	13.0%	\$19,630,155	\$19,033,326	\$596,829	3.1%	\$82,119,900	\$74,351,610	\$7,768,290	10.4%
16	12/15/2012		\$58,612,629				\$20,045,279				\$78,657,908		
17	12/22/2012		\$60,628,256				\$22,572,986				\$83,201,242		
18	12/29/2012		\$63,065,007				\$19,948,521				\$83,013,528		
19	1/5/2013		\$60,479,896				\$17,331,888				\$77,811,784		
20	1/12/2013		\$57,689,526				\$17,568,732				\$75,258,258		
21	1/19/2013		\$58,704,854				\$19,886,540				\$78,591,394		
22	1/26/2013		\$57,611,325				\$20,641,697				\$78,253,022		
23	2/2/2013		\$65,553,366				\$23,689,855				\$89,243,221		
24	2/9/2013		\$75,070,485				\$28,361,583				\$103,432,068		
25	2/16/2013		\$66,679,947				\$19,588,615				\$86,268,562		
26	2/23/2013		\$64,868,899				\$19,965,388				\$84,834,287		
27	3/2/2013		\$67,135,065				\$20,947,181				\$88,082,246		
28	3/9/2013		\$68,299,006				\$22,152,639				\$90,451,645		
29	3/16/2013		\$65,013,692				\$23,351,718				\$88,365,410		
30	3/23/2013		\$64,035,255				\$27,416,609				\$91,451,864		
31	3/30/2013		\$65,135,991				\$84,628,987				\$149,764,978		
32	4/6/2013		\$66,860,957				\$19,899,400				\$86,760,357		
33	4/13/2013		\$64,028,898				\$20,220,141				\$84,249,039		
34	4/20/2013		\$63,623,892				\$20,974,282				\$84,598,174		
35	4/27/2013		\$61,743,623				\$20,267,388				\$82,011,011		
36	5/4/2013		\$64,851,962				\$20,642,982				\$85,494,944		
37	5/11/2013		\$65,472,556				\$19,140,768				\$84,613,324		
38	5/18/2013		\$60,572,658				\$18,342,814				\$78,915,472		
39	5/25/2013		\$58,959,028				\$18,618,060				\$77,577,088		
40	6/1/2013		\$57,409,086				\$19,014,645				\$76,423,731		
41	6/8/2013		\$59,845,545				\$20,527,958				\$80,373,503		
42	6/15/2013		\$57,021,498				\$19,386,186				\$76,407,684		

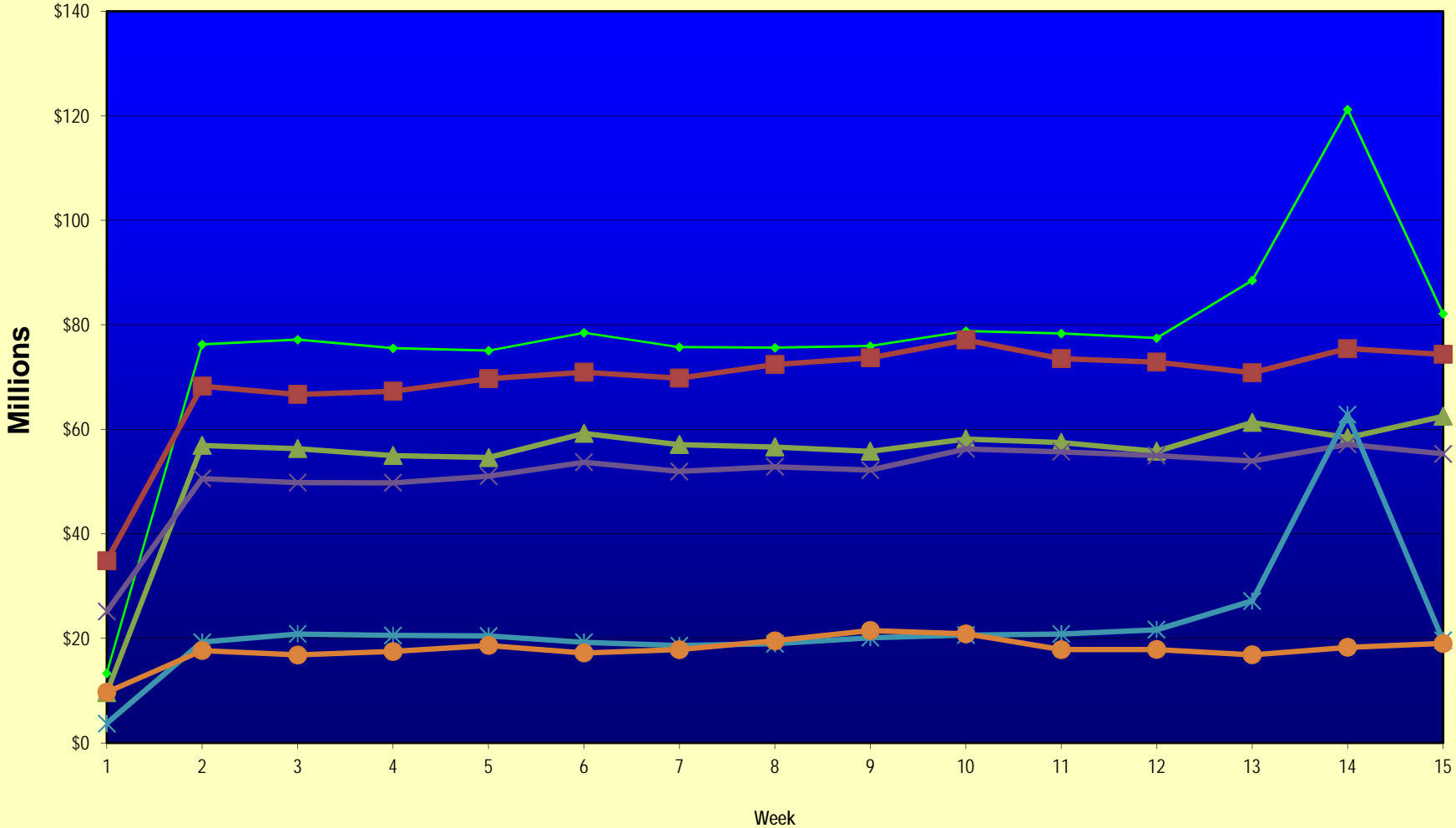
Note: Week 1 is not a full week of sales as this report is prepared on a Fiscal Year basis.

Texas Lottery Commission
Fiscal Year Over Year Change in Sales
Unaudited
FY 2013 Compared to FY 2012

Week	FY 2013 Week Ending	INSTANT TICKETS				DRAW GAMES				TOTAL SALES			
		FY 2013	FY 2012	Difference	% change - Cumulative Sales	FY 2013	FY 2012	Difference	% change - Cumulative Sales	FY 2013	FY 2012	Difference	% change - Cumulative Sales
43	6/22/2013		\$57,892,076				\$17,594,154				\$75,486,230		
44	6/29/2013		\$57,497,435				\$18,153,658				\$75,651,093		
45	7/6/2013		\$60,345,000				\$19,059,152				\$79,404,152		
46	7/13/2013		\$57,683,321				\$18,751,043				\$76,434,364		
47	7/20/2013		\$57,083,343				\$18,769,201				\$75,852,544		
48	7/27/2013		\$54,006,781				\$18,934,103				\$72,940,884		
49	8/3/2013		\$56,557,409				\$20,206,705				\$76,764,114		
50	8/10/2013		\$57,799,452				\$22,832,120				\$80,631,572		
51	8/17/2013		\$54,845,724				\$25,435,624				\$80,281,348		
52	8/24/2013		\$55,661,277				\$17,524,474				\$73,185,751		
	8/31/2013		\$47,363,984				\$14,929,528				\$62,293,512		
Total thru Current Week		\$814,831,015	\$770,432,650	\$44,398,365	5.8%	\$334,718,253	\$267,351,964	\$67,366,290	25.2%	\$1,149,549,268	\$1,037,784,614	\$111,764,655	10.8%
Fiscal Year Total		\$814,831,015	\$3,086,141,354			\$334,718,253	\$1,104,674,559			\$1,149,549,268	\$4,190,815,913		

** FY 2012 includes 3 days; FY 2013 includes 1 day.

Texas Lottery Commission Fiscal Year Over Year Change in Sales



◆ Total Sales 2013
 ■ Total Sales 2012
 ▲ Instant Tickets 2013
 × Instant Tickets 2012
 ✱ Draw Games 2013
 ● Draw Games 2012

Note: Week 1 is not a full week of sales as this report is prepared on a Fiscal Year basis.

Texas Lottery Commission
Instant Tickets by Price Point
Sales, Prize Expense, Sales Contribution and Payout Percentage With Year Over Year Changes
Unaudited

Fiscal Year	Price Point	# of Active Games	FY Sales	% of Instant Ticket Sales	Year over Year Change in Sales	FY Prize Expense	Year over Year Change in Prize Expense	FY Sales Contribution	Year over Year Change in Contribution	Average Prize Payout %	Year over Year Change in Payout %
2012	\$1.00	25	55,282,974	7.2%		33,970,641		21,312,333		61.4%	1.1%
thru	\$2.00	25	106,720,382	13.9%		69,397,297		37,323,085		65.0%	-0.8%
12/10/2011	\$3.00	14	96,334,776	12.5%		63,226,166		33,108,610		65.6%	0.1%
	\$5.00	32	238,831,855	31.0%		162,369,115		76,462,740		68.0%	0.1%
	\$7.00	4	17,073,063	2.2%		11,609,524		5,463,539		68.0%	0.0%
	\$10.00	13	125,997,670	16.4%		88,750,719		37,246,951		70.4%	-0.8%
	\$20.00	5	108,897,880	14.1%		81,236,026		27,661,854		74.6%	-0.1%
	\$50.00	1	21,294,050	2.8%		16,539,809		4,754,241		77.7%	0.1%
Total		119	\$770,432,650			\$527,099,296		\$243,333,354		68.4%	-0.1%
2013	\$1.00	25	48,640,506	6.0%		29,798,620		18,841,886		61.3%	1.0%
thru	\$2.00	26	104,438,322	12.8%		67,898,972		36,539,350		65.0%	-0.1%
12/8/2012	\$3.00	14	106,021,209	13.0%		69,538,700		36,482,509		65.6%	0.1%
	\$5.00	41	246,790,060	30.3%		167,559,007		79,231,053		67.9%	-0.2%
	\$7.00	2	13,669,418	1.7%		9,290,647		4,378,771		68.0%	0.0%
	\$10.00	11	138,426,690	17.0%		97,786,437		40,640,253		70.6%	-0.4%
	\$20.00	7	121,738,760	14.9%		91,128,053		30,610,707		74.9%	0.1%
	\$50.00	3	35,106,050	4.3%		27,257,094		7,848,956		77.6%	0.0%
Total		129	\$814,831,015			\$560,257,530		\$254,573,485		68.8%	0.2%
Variance	\$1.00	0	-6,642,468		-12.0%	-4,172,021	-12.3%	-2,470,447	-11.6%	-0.19%	
2013 to	\$2.00	1	-2,282,060		-2.1%	-1,498,325	-2.2%	-783,735	-2.1%	-0.01%	
2012	\$3.00	0	9,686,433		10.1%	6,312,534	10.0%	3,373,899	10.2%	-0.04%	
	\$5.00	9	7,958,205		3.3%	5,189,893	3.2%	2,768,312	3.6%	-0.09%	
	\$7.00	-2	-3,403,645		-19.9%	-2,318,877	-20.0%	-1,084,768	-19.9%	-0.03%	
	\$10.00	-2	12,429,020		9.9%	9,035,718	10.2%	3,393,302	9.1%	0.20%	
	\$20.00	2	12,840,880		11.8%	9,892,026	12.2%	2,948,854	10.7%	0.26%	
	\$50.00	2	13,812,000		64.9%	10,717,285	64.8%	3,094,715	65.1%	-0.03%	
Total		10	\$44,398,365		5.8%	\$33,158,234	6.3%	\$11,240,131	4.6%	0.34%	

Notes - Instant Ticket Variances

Texas Lottery Commission
Instant Tickets by Price Point
Sales, Prize Expense, Sales Contribution and Payout Percentage With Year Over Year Changes
 Unaudited

			FY 2013		FY 2012	Difference
Sales	\$1 - \$7	1	\$519,559,515		\$514,243,050	\$5,316,465
Prize Exp.	\$1 - \$7	1	\$344,085,947		\$340,572,742	\$3,513,205
Sales Cont.	\$1 - \$7	1	\$175,473,568		\$173,670,308	\$1,803,260
Prize Exp. %	\$1 - \$7	1	66.2%		66.2%	0.0%
			FY 2013		FY 2012	Difference
Sales	\$10 - \$50	2	\$295,271,500		\$256,189,600	\$39,081,900
Prize Exp.	\$10 - \$50	2	\$216,171,583		\$186,526,554	\$29,645,029
Sales Cont.	\$10 - \$50	1	\$79,099,917		\$69,663,046	\$9,436,871
Prize Exp. %	\$10 - \$50	2	73.2%		72.8%	0.4%
			FY 2013		FY 2012	Difference
Sales	Instant		\$814,831,015		\$770,432,650	\$44,398,365
Prize Exp.	Instant		\$560,257,530		\$527,099,296	\$33,158,234
Sales Cont.	Instant		\$254,573,485		\$243,333,354	\$11,240,131
Prize Exp. %	Instant		68.8%		68.4%	0.3%

			FY 2013		FY 2012	Difference
Sales	\$1 - \$10		\$657,986,205		\$640,240,720	\$17,745,485
Prize Exp.	\$1 - \$10		\$441,872,384		\$429,323,461	\$12,548,923
Sales Cont.	\$1 - \$10		\$216,113,821		\$210,917,259	\$5,196,562
Prize Exp. %	\$1 - \$10		67.2%		67.1%	0.1%
			FY 2013		FY 2012	Difference
Sales	\$20 - \$50		\$156,844,810		\$130,191,930	\$26,652,880
Prize Exp.	\$20 - \$50		\$118,385,146		\$97,775,835	\$20,609,311
Sales Cont.	\$20 - \$50		\$38,459,664		\$32,416,095	\$6,043,569
Prize Exp. %	\$20 - \$50		75.5%		75.1%	0.4%
			FY 2013		FY 2012	Difference
Sales	Instant		\$814,831,015		\$770,432,650	\$44,398,365
Prize Exp.	Instant		\$560,257,530		\$527,099,296	\$33,158,234
Sales Cont.	Instant		\$254,573,485		\$243,333,354	\$11,240,131
Prize Exp. %	Instant		68.8%		68.4%	0.3%

Texas Lottery Commission
Weekly Sales Summary
& Comparison to Previous Week
 Unaudited

	Week Ending 12/08/2012	% of Sales	Week Ending 12/01/2012	% of Sales	\$ change	% change
	<u>THIS WEEK</u>		<u>LAST WEEK</u>			
Total Sales	<u>\$82,119,900</u>		<u>\$121,218,541</u>		<u>-\$39,098,642</u>	<u>-32.25%</u>
Instant Tickets	<u>\$62,489,745</u>	76.1%	<u>\$58,420,598</u>	48.2%	<u>\$4,069,147</u>	<u>6.97%</u>
Lotto	\$2,971,837	3.6%	\$3,304,053	2.7%	-\$332,216	-10.05%
Pick 3	\$5,374,747	6.5%	\$5,123,778	4.2%	\$250,969	4.90%
Pick 3 Sum It Up	\$101,479	0.1%	\$97,511	0.1%	\$3,968	4.07%
Cash Five	\$1,129,990	1.4%	\$1,086,916	0.9%	\$43,074	3.96%
Texas Two Step	\$1,359,739	1.7%	\$925,805	0.8%	\$433,934	46.87%
Mega Millions	\$1,861,503	2.3%	\$2,358,380	1.9%	-\$496,877	-21.07%
Megaplier	\$445,171	0.5%	\$533,175	0.4%	-\$88,004	-16.51%
Daily 4	\$1,391,477	1.7%	\$1,319,684	1.1%	\$71,793	5.44%
Daily 4 Sum It Up	\$94,879	0.1%	\$92,240	0.1%	\$2,639	2.86%
Powerball	\$2,832,293	3.4%	\$43,264,700	35.7%	-\$40,432,407	-93.45%
Power Play	\$362,145	0.4%	\$2,894,606	2.4%	-\$2,532,461	-87.49%
All or Nothing	\$1,704,896	2.1%	\$1,797,096	1.5%	-\$92,200	-5.13%
Total Draw Game Sales	<u>\$19,630,155</u>		<u>\$62,797,943</u>		<u>-\$43,167,789</u>	<u>-68.74%</u>

* Totals may not sum due to rounding.

Texas Lottery Commission
Weekly Sales Summary
Unaudited

INSTANT TICKETS
TOP TEN SELLING GAMES

For the Week Ending: 12/08/12

Rank	Price Point	Game	Sales (Millions)
1	\$ 10	HOLIDAY DOUBLER	\$ 3.854
2	\$ 5	HAPPY HOLIDAYS	\$ 3.468
3	\$ 20	MERRY MILLIONS	\$ 3.143
4	\$ 20	\$500 MILLION EXTREME CASH BLAST	\$ 2.535
5	\$ 50	\$7,500,000 FORTUNE	\$ 2.395
6	\$ 5	\$100,000 CASH	\$ 2.321
7	\$ 3	LOTERIA TEXAS	\$ 2.240
8	\$ 10	\$200 MILLION CASH SPECTACULAR	\$ 2.009
9	\$ 3	JINGLE BELL CROSSWORD	\$ 1.950
10	\$ 5	NUTCRACKER CASH	\$ 1.944

Texas Lottery Commission
Prize Payout Tracking Report
Unaudited

Through Week Ending 12/08/12

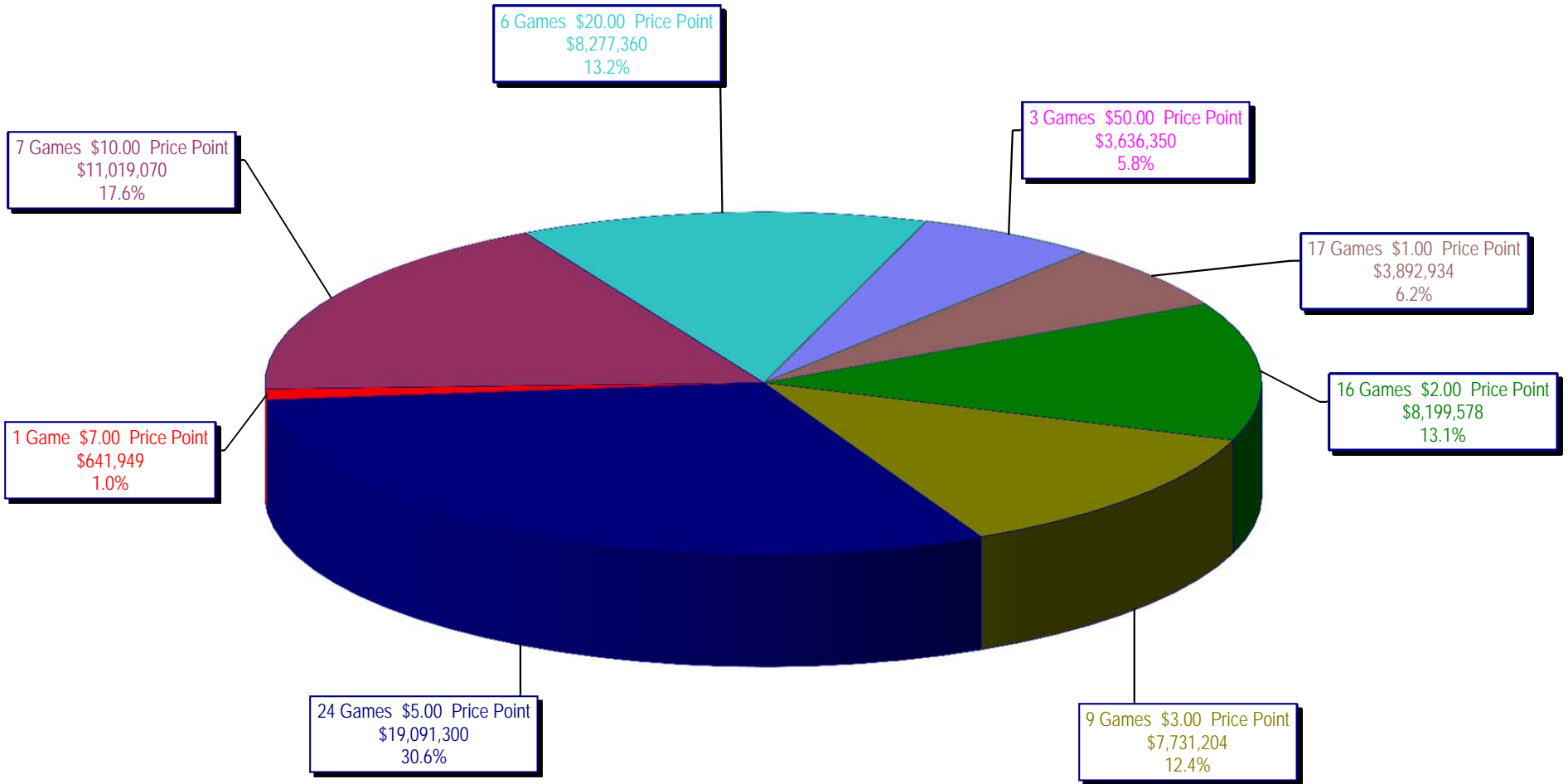
Draw Game Sales

		FY Sales Through Week Ending 12/8/2012		FY Prize Expense Through Week Ending 12/8/2012	Actual* Prize Payout	Base Payout (Prize Pool)
Lotto	\$	43,873,591	\$	28,810,883	65.67%	50.00%
Pick 3		72,185,092		39,148,810	54.23%	50.00%
Pick 3 Sum It Up		1,357,344		643,012	47.37%	50.00%
Cash Five		15,468,757		7,736,080	50.01%	50.00%
Texas Two Step		14,490,944		7,314,899	50.48%	50.00%
Mega Millions		29,504,286		14,446,468	48.96%	50.00%**
Megaplier		6,834,162		3,543,587	51.85%	N/A
Daily 4		18,889,880		8,124,675	43.01%	50.00%
Daily 4 Sum It Up		1,280,683		485,589	37.92%	50.00%
Powerball		95,247,890		48,571,883	51.00%	50.00%**
Power Play		9,023,794		5,020,309	55.63%	N/A
All or Nothing		26,561,831		15,747,754	59.29%	50.00%
Totals	\$	334,718,253	\$	179,593,948	53.66%	

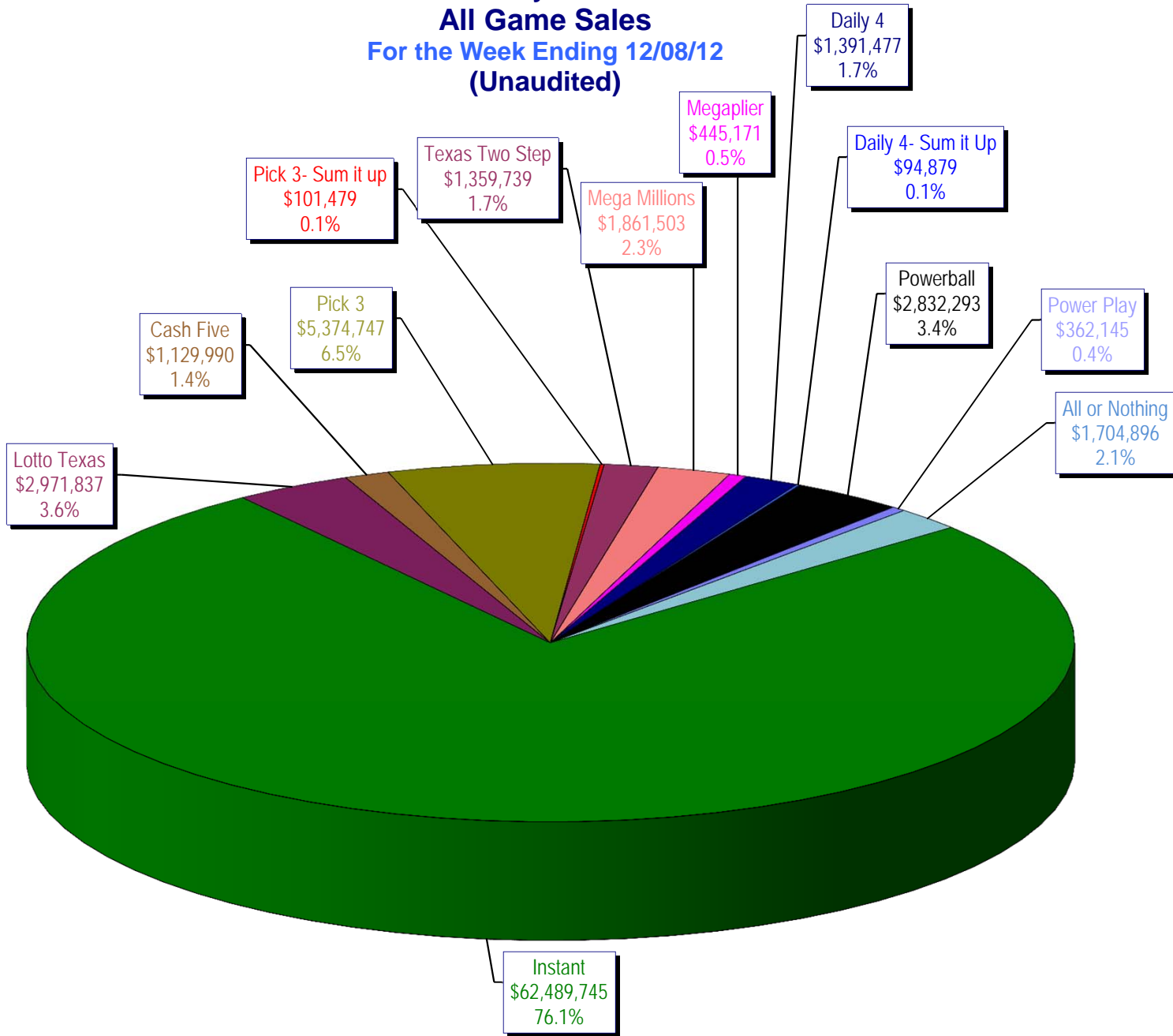
* Before Unclaimed Prizes

** Estimated; depends on # of guaranteed prizes won in Texas

Texas Lottery Commission
Instant Ticket Sales
For the Week Ending 12/08/12
(Unaudited)



**Texas Lottery Commission
All Game Sales
For the Week Ending 12/08/12
(Unaudited)**



Texas Lottery Commission - Weekly Sales Summary for FY 2013 (Unaudited)

Week Ended	Instant Games	New Games & Dates	Lotto Texas	Jackpot W S	Pick 3	Pick 3 Sum It Up	Cash Five	Texas Two Step	Jackpot M TH	Mega Millions	Jackpot T F	Megaplier	Daily 4	Daily 4 Sum It Up	Powerball	Jackpot W S	Power Play	All or Nothing	Total	Per Cap.
9/1/2012	56,975,312	1446 (\$1, N); 1444 (\$2, N) - 08/27/12	2,972,415	12 13	4,967,337	105,441	1,198,597	1,455,689	500 675	2,769,421	73 83	612,072	1,419,103	97,265	2,680,694	70 80	364,030		75,617,375	2.95
9/8/2012	56,941,761	1440 (\$2, N); 1458 (\$3, N); 1459 (\$5, N) - 09/03/12	3,005,564	14 15	5,112,132	106,959	1,185,494	1,179,003	875 200	3,140,536	93 105	665,392	1,412,279	99,861	3,002,910	90 100	395,287		76,247,178	2.97
9/15/2012	56,302,875	1452 (\$3, N) - 09/10/12	2,999,894	16 17	4,785,209	95,720	1,118,519	894,412	225 200	2,684,227	120 12	580,869	1,290,478	90,795	3,373,296	110 125	417,470	2,526,342	77,160,105	3.01
9/22/2012	54,974,438	1460 (\$1, N); 1461 (\$5, N) - 09/17/12	2,986,898	18 19	4,611,684	89,173	1,091,440	986,264	225 325	1,874,336	15 12	452,082	1,258,191	86,390	4,122,790	149 174	479,344	2,531,686	75,544,715	2.94
9/29/2012	54,606,674	1462 (\$2, N); 1472 (\$10, N) - 09/24/12	3,047,519	20 21	4,708,250	90,752	1,077,739	1,313,257	475 625	1,884,366	14 21	452,334	1,278,847	87,211	3,779,359	200 40	445,091	2,297,966	75,069,364	2.92
10/6/2012	59,223,327	1464 (\$5, N) - 10/01/12	3,164,231	22 23	4,947,571	96,251	1,121,146	1,188,386	800 200	2,055,918	28 36	482,303	1,310,612	89,270	2,266,428	50 40	312,877	2,244,980	78,503,300	3.06
10/13/2012	57,075,606	1465 (\$1, N); 1466 (\$20, N) - 10/08/2012	3,133,742	24 25	4,793,793	89,663	1,074,687	865,146	225 200	2,163,099	45 53	492,614	1,261,858	84,585	2,241,120	50 60	309,684	2,128,476	75,714,073	2.95
10/20/2012	56,630,134	1467 (\$1, N); 1468 (\$5, N) - 10/15/12	3,172,820	26 27	4,959,071	88,413	1,074,980	970,100	225 325	1,984,966	61 12	466,730	1,296,602	84,868	2,447,518	70 80	328,436	2,124,439	75,629,077	2.95
10/27/2012	55,789,743	1469 (\$2, N); 1470 (\$10, N) - 10/22/2012	3,204,694	28 29	5,550,567	96,242	1,063,201	1,226,578	450 600	1,778,725	13 21	430,528	1,381,019	91,618	2,914,062	90 100	371,273	2,021,684	75,919,933	2.96
11/3/2012	58,142,777	1503 (\$5, N) - 10/29/2012	3,392,650	30 31	5,501,964	101,742	1,078,593	860,073	200 225	1,950,117	27 32	462,385	1,393,099	93,773	3,466,242	110 124	424,170	1,913,200	78,780,785	3.07
11/10/2012	57,484,804	1475 (\$1, N); 1476 (\$3, N) - 11/05/2012	3,061,999	32 4	5,468,924	100,767	1,083,928	837,666	200 200	1,783,099	12 13	430,343	1,402,194	94,451	4,246,246	143 168	491,538	1,861,718	78,347,676	3.05
11/17/2012	55,805,228	1477 (\$2, N); 1478 (\$5, N) - 11/12/2012	2,599,190	5 6	5,248,059	91,989	1,059,723	920,319	225 300	1,841,571	19 26	440,783	1,345,121	88,391	5,638,425	185 214	615,323	1,771,812	77,465,933	3.02
11/24/2012	61,331,977	1394 (\$50, N) - 11/19/2012	2,768,876	7 8	5,086,879	91,409	1,021,878	883,407	425 200	2,003,365	33 41	472,723	1,300,693	85,037	10,768,045	250 325	1,053,006	1,637,536	88,504,830	3.45
12/1/2012	58,420,598	0	3,304,053	9 10	5,123,778	97,511	1,086,916	925,805	225 275	2,358,380	49 12	533,175	1,319,684	92,240	43,264,700	550 40	2,894,606	1,797,096	121,218,541	4.72
12/8/2012	62,489,745	1479 (\$1, N); 1485 (\$5, N) - 12/03/12	2,971,837	11 12	5,374,747	101,479	1,129,990	1,359,739	425 575	1,861,503	13 20	445,171	1,391,477	94,879	2,832,293	50 40	362,145	1,704,896	82,119,900	3.20
weekly change	7.0%		-10.1%		4.9%	4.1%	4.0%	46.9%		-21.1%		-16.5%	5.4%	2.9%			-87.5%	-5.1%	-32.3%	
	SALES		SALES		SALES	SALES	SALES	SALES		SALES		SALES	SALES	SALES	SALES		SALES		SALES	% of Sales
Calendar Year to date	2,948,233,827		154,619,428		257,667,700	5,246,278	59,536,876	58,970,766		187,628,728		36,343,510	66,530,564	4,635,509	225,710,982		26,021,893	26,561,831	4,057,707,891	100.0%
Fiscal Year to date 2013	814,831,015		43,873,591		72,185,092	1,357,344	15,468,757	14,490,944		29,504,286		6,834,162	18,889,880	1,280,683	95,247,890		9,023,794	26,561,831	1,149,549,268	100.0%