



*WEEKLY SALES SUMMARY*

Unaudited

[Week Ending: 12/10/2011](#)

Texas Lottery Commission  
Fiscal Year to Date Sales Comparison  
Unaudited

Through the week ending 12/10/2011 (15 weeks)

Sales by Game	FY 2010 *	FY 2011 **	FY 2012	\$ Change		% Change	
				FY 2012 to FY 2010	FY 2012 to FY 2011 to	FY 2012 to FY 2010	FY 2012 to FY 2011
Instants	\$ 764,457,979	\$ 750,360,343	\$ 770,432,650	\$ 5,974,671	\$ 20,072,307	0.8%	2.7%
Lotto Texas	80,293,543	47,350,837	49,347,717	-30,945,826	1,996,880	-38.5%	4.2%
Pick 3	75,645,849	75,725,162	72,899,183	-2,746,666	-2,825,979	-3.6%	-3.7%
Pick 3 Sum It Up	1,521,850	1,538,514	1,482,301	-39,549	-56,213	-2.6%	-3.7%
Cash Five	19,019,503	17,870,829	17,741,614	-1,277,889	-129,215	-6.7%	-0.7%
Texas Two Step	12,417,086	13,514,126	17,006,934	4,589,848	3,492,808	37.0%	25.8%
Mega Millions	53,509,218	36,588,235	38,862,732	-14,646,486	2,274,497	-27.4%	6.2%
Megaplier	12,091,026	8,252,544	8,830,853	-3,260,173	578,309	-27.0%	7.0%
Daily 4	14,538,033	15,674,401	17,116,126	2,578,093	1,441,725	17.7%	9.2%
Daily 4 Sum It Up	1,414,319	1,233,056	1,281,757	-132,562	48,702	-9.4%	3.9%
Powerball	-	24,042,139	35,118,194	35,118,194	11,076,055	-	-
Power Play	-	5,769,369	7,664,553	7,664,553	1,895,184	-	-
<b>Total</b>	<b>\$ 1,034,908,405</b>	<b>\$ 997,919,554</b>	<b>\$ 1,037,784,614</b>	<b>\$ 2,876,209</b>	<b>\$ 39,865,060</b>	<b>0.3%</b>	<b>4.0%</b>

\* 2 extra days

\*\* 1 extra day

Texas Lottery Commission  
 Fiscal Year to Date Cumulative Average Sales Comparison  
 Unaudited

Through the week ending 12/10/2011 (15 weeks)

Sales by Game	FY 2010	FY 2011	FY 2012
Instant	\$ 7,421,922	\$ 7,356,474	\$ 7,628,046
Lotto Texas	779,549	464,224	488,591
Pick 3	734,426	742,404	721,774
Pick 3 Sum It Up	14,775	15,083	14,676
Cash Five	184,655	175,204	175,660
Texas Two Step	120,554	132,491	168,385
Mega Millions	519,507	358,708	384,780
Megaplier	117,389	80,907	87,434
Daily 4	141,146	153,671	169,467
Daily 4 Sum It Up	13,731	12,089	12,691
Powerball	-	235,707	347,705
Power Play	-	56,562	75,887
<b>Total</b>	<b>\$ 10,047,654</b>	<b>\$ 9,783,525</b>	<b>\$ 10,275,095</b>
	thru 12/12/2009 103 days	thru 12/11/2010 102 days	thru 12/10/2011 101 days

Texas Lottery Commission  
Fiscal Year Over Year Change in Sales  
Unaudited  
FY 2012 Compared to FY 2011

Week	FY 2012 Week Ending	INSTANT TICKETS				ON-LINE GAMES				TOTAL SALES			
		FY 2012	FY 2011	Difference	% change - Cumulative Sales	FY 2012	FY 2011	Difference	% change - Cumulative Sales	FY 2012	FY 2011	Difference	% change - Cumulative Sales
1	9/3/2011**	\$25,147,181	\$31,659,033	(\$6,511,852)	-20.6%	\$9,704,561	\$11,430,717	(\$1,726,156)	-15.1%	\$34,851,742	\$43,089,750	(\$8,238,008)	-19.1%
2	9/10/2011	\$50,591,068	\$48,912,598	\$1,678,470	3.4%	\$17,681,853	\$16,398,160	\$1,283,693	7.8%	\$68,272,921	\$65,310,758	\$2,962,163	4.5%
3	9/17/2011	\$49,835,063	\$48,988,241	\$846,822	1.7%	\$16,842,326	\$17,166,827	(\$324,501)	-1.9%	\$66,677,389	\$66,155,068	\$522,321	0.8%
4	9/24/2011	\$49,777,138	\$48,471,310	\$1,305,828	2.7%	\$17,504,800	\$15,623,813	\$1,880,987	12.0%	\$67,281,938	\$64,095,123	\$3,186,815	5.0%
5	10/1/2011	\$51,040,274	\$50,145,138	\$895,136	1.8%	\$18,653,100	\$16,453,939	\$2,199,161	13.4%	\$69,693,374	\$66,599,077	\$3,094,297	4.6%
6	10/8/2011	\$53,715,157	\$50,918,591	\$2,796,566	5.5%	\$17,225,680	\$16,974,963	\$250,717	1.5%	\$70,940,837	\$67,893,554	\$3,047,283	4.5%
7	10/15/2011	\$51,942,121	\$49,096,011	\$2,846,110	5.8%	\$17,854,980	\$16,661,904	\$1,193,077	7.2%	\$69,797,101	\$65,757,915	\$4,039,187	6.1%
8	10/22/2011	\$52,837,769	\$50,158,946	\$2,678,823	5.3%	\$19,558,519	\$17,374,460	\$2,184,060	12.6%	\$72,396,288	\$67,533,406	\$4,862,883	7.2%
9	10/29/2011	\$52,206,644	\$49,775,287	\$2,431,357	4.9%	\$21,504,565	\$18,402,209	\$3,102,356	16.9%	\$73,711,209	\$68,177,496	\$5,533,713	8.1%
10	11/5/2011	\$56,265,310	\$53,337,848	\$2,927,462	5.5%	\$20,870,086	\$17,321,908	\$3,548,179	20.5%	\$77,135,396	\$70,659,756	\$6,475,641	9.2%
11	11/12/2011	\$55,682,645	\$52,285,479	\$3,397,166	6.5%	\$17,862,404	\$16,388,690	\$1,473,714	9.0%	\$73,545,049	\$68,674,169	\$4,870,880	7.1%
12	11/19/2011	\$54,978,079	\$52,424,036	\$2,554,043	4.9%	\$17,879,985	\$16,138,022	\$1,741,963	10.8%	\$72,858,064	\$68,562,058	\$4,296,006	6.3%
13	11/26/2011	\$53,942,448	\$51,262,518	\$2,679,930	5.2%	\$16,877,145	\$15,967,075	\$910,070	5.7%	\$70,819,593	\$67,229,593	\$3,590,000	5.3%
14	12/3/2011	\$57,153,469	\$56,385,259	\$768,210	1.4%	\$18,298,636	\$17,553,175	\$745,461	4.2%	\$75,452,105	\$73,938,434	\$1,513,671	2.0%
15	12/10/2011	\$55,318,284	\$56,540,048	(\$1,221,764)	-2.2%	\$19,033,326	\$17,703,352	\$1,329,975	7.5%	\$74,351,610	\$74,243,400	\$108,211	0.1%
16	12/17/2011		\$57,699,991				\$18,465,282				\$76,165,273		
17	12/24/2011		\$59,800,480				\$19,635,771				\$79,436,251		
18	12/31/2011		\$61,423,121				\$26,122,257				\$87,545,378		
19	1/7/2012		\$60,976,653				\$33,521,570				\$94,498,223		
20	1/14/2012		\$50,099,433				\$17,114,637				\$67,214,070		
21	1/21/2012		\$53,143,646				\$18,091,208				\$71,234,854		
22	1/28/2012		\$54,096,128				\$17,446,156				\$71,542,284		
23	2/4/2012		\$53,433,592				\$17,388,581				\$70,822,173		
24	2/11/2012		\$60,277,094				\$18,233,038				\$78,510,132		
25	2/18/2012		\$61,536,763				\$19,387,518				\$80,924,281		
26	2/25/2012		\$59,046,203				\$20,054,404				\$79,100,607		
27	3/3/2012		\$60,537,060				\$19,478,807				\$80,015,867		
28	3/10/2012		\$59,997,361				\$19,601,658				\$79,599,019		
29	3/17/2012		\$57,835,554				\$21,189,563				\$79,025,117		
30	3/24/2012		\$57,911,940				\$29,729,651				\$87,641,591		
31	3/31/2012		\$60,407,139				\$19,519,264				\$79,926,403		
32	4/7/2012		\$60,704,285				\$19,455,317				\$80,159,602		
33	4/14/2012		\$57,663,398				\$17,866,867				\$75,530,265		
34	4/21/2012		\$56,740,216				\$17,429,326				\$74,169,542		
35	4/28/2012		\$58,042,011				\$17,104,548				\$75,146,559		
36	5/5/2012		\$66,509,159				\$17,744,833				\$84,253,992		
37	5/12/2012		\$53,769,716				\$17,783,942				\$71,553,658		
38	5/19/2012		\$53,704,228				\$18,623,882				\$72,328,110		
39	5/26/2012		\$52,310,134				\$19,115,921				\$71,426,055		
40	6/2/2012		\$53,256,725				\$18,462,603				\$71,719,328		
41	6/9/2012		\$54,293,614				\$17,213,019				\$71,506,633		
42	6/16/2012		\$52,688,230				\$17,534,413				\$70,222,643		

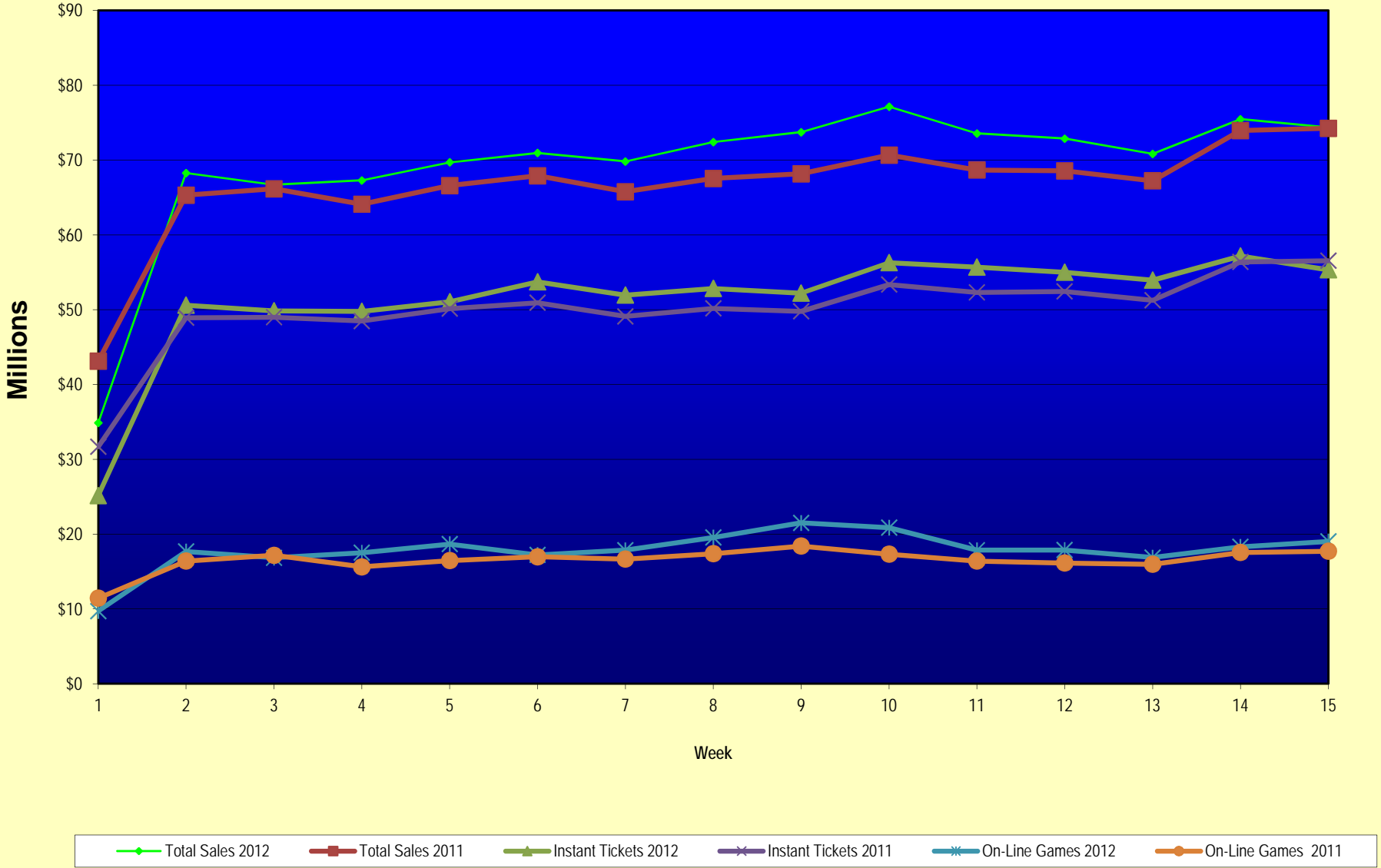
Note: Week 1 is not a full week of sales as this report is prepared on a Fiscal Year basis.

Texas Lottery Commission  
Fiscal Year Over Year Change in Sales  
Unaudited  
FY 2012 Compared to FY 2011

Week	FY 2012 Week Ending	INSTANT TICKETS				ON-LINE GAMES				TOTAL SALES			
		FY 2012	FY 2011	Difference	% change - Cumulative Sales	FY 2012	FY 2011	Difference	% change - Cumulative Sales	FY 2012	FY 2011	Difference	% change - Cumulative Sales
43	6/23/2012		\$53,174,595				\$17,086,937				\$70,261,532		
44	6/30/2012		\$53,687,509				\$18,406,785				\$72,094,294		
45	7/7/2012		\$53,054,685				\$16,211,989				\$69,266,674		
46	7/14/2012		\$51,161,290				\$16,945,733				\$68,107,023		
47	7/21/2012		\$50,807,750				\$17,362,213				\$68,169,963		
48	7/28/2012		\$51,277,179				\$18,870,764				\$70,147,943		
49	8/4/2012		\$53,320,489				\$20,922,034				\$74,242,523		
50	8/11/2012		\$50,914,022				\$19,467,124				\$70,381,146		
51	8/18/2012		\$49,905,898				\$17,419,045				\$67,324,943		
52	8/25/2012		\$49,424,242				\$16,837,474				\$66,261,716		
	8/31/2012		\$27,274,804				\$8,600,118				\$35,874,922		
Total thru Current Week		\$770,432,650	\$750,360,343	\$20,072,307	2.7%	\$267,351,964	\$247,559,211	\$19,792,753	8.0%	\$1,037,784,614	\$997,919,554	\$39,865,060	4.0%
Fiscal Year Total		\$770,432,650	\$2,842,266,680			\$267,351,964	\$969,003,455			\$1,037,784,614	\$3,811,270,135		

\*\* FY 2011 includes 4 days; FY 2012 includes 3 days

### Texas Lottery Commission Fiscal Year Over Year Change in Sales



Note: Week 1 is not a full week of sales as this report is prepared on a Fiscal Year basis.

Texas Lottery Commission  
**Instant Tickets by Price Point**  
Sales, Prize Expense, Sales Contribution and Payout Percentage With Year Over Year Changes  
Unaudited

Fiscal Year	Price Point	# of Active Games	FY Sales	% of Instant Ticket Sales	Year over Year Change in Sales	FY Prize Expense	Year over Year Change in Prize Expense	FY Sales Contribution	Year over Year Change in Contribution	Average Prize Payout %	Year over Year Change in Payout %
2011	\$1.00	25	53,243,125	7.1%		32,881,909		20,361,216		61.8%	2.8%
thru	\$2.00	25	110,700,106	14.8%		72,557,295		38,142,811		65.5%	0.6%
12/11/2010	\$3.00	16	90,648,212	12.1%		59,571,742		31,076,470		65.7%	0.2%
	\$5.00	33	240,217,835	32.0%		163,573,921		76,643,914		68.1%	0.1%
	\$7.00	6	32,386,025	4.3%		22,014,190		10,371,835		68.0%	0.0%
	\$10.00	12	98,265,380	13.1%		69,333,847		28,931,533		70.6%	0.9%
	\$20.00	5	98,323,760	13.1%		72,877,063		25,446,697		74.1%	1.3%
	\$50.00	2	26,575,900	3.5%		20,632,203		5,943,697		77.6%	4.1%
<b>Total</b>		<b>124</b>	<b>\$750,360,343</b>			<b>\$513,442,169</b>		<b>\$236,918,174</b>		<b>68.4%</b>	<b>1.0%</b>
2012	\$1.00	25	55,282,974	7.2%		33,970,641		21,312,333		61.4%	1.1%
thru	\$2.00	25	106,720,382	13.9%		69,397,297		37,323,085		65.0%	-0.8%
12/10/2011	\$3.00	14	96,334,776	12.5%		63,226,166		33,108,610		65.6%	0.1%
	\$5.00	32	238,831,855	31.0%		162,369,115		76,462,740		68.0%	0.1%
	\$7.00	4	17,073,063	2.2%		11,609,524		5,463,539		68.0%	0.0%
	\$10.00	13	125,997,670	16.4%		88,750,719		37,246,951		70.4%	-0.8%
	\$20.00	5	108,897,880	14.1%		81,236,026		27,661,854		74.6%	-0.1%
	\$50.00	1	21,294,050	2.8%		16,539,809		4,754,241		77.7%	0.1%
<b>Total</b>		<b>119</b>	<b>\$770,432,650</b>			<b>\$527,099,296</b>		<b>\$243,333,354</b>		<b>68.4%</b>	<b>-0.1%</b>
<b>Variance</b>	\$1.00	0	2,039,849		3.8%	1,088,732	3.3%	951,117	4.7%	-0.31%	
2012 to	\$2.00	0	-3,979,724		-3.6%	-3,159,998	-4.4%	-819,726	-2.1%	-0.52%	
2011	\$3.00	-2	5,686,564		6.3%	3,654,423	6.1%	2,032,141	6.5%	-0.09%	
	\$5.00	-1	-1,385,980		-0.6%	-1,204,806	-0.7%	-181,174	-0.2%	-0.11%	
	\$7.00	-2	-15,312,962		-47.3%	-10,404,666	-47.3%	-4,908,296	-47.3%	0.02%	
	\$10.00	1	27,732,290		28.2%	19,416,872	28.0%	8,315,418	28.7%	-0.12%	
	\$20.00	0	10,574,120		10.8%	8,358,963	11.5%	2,215,157	8.7%	0.48%	
	\$50.00	-1	-5,281,850		-19.9%	-4,092,394	-19.8%	-1,189,456	-20.0%	0.04%	
<b>Total</b>		<b>-5</b>	<b>\$20,072,307</b>		<b>2.7%</b>	<b>\$13,657,127</b>	<b>2.7%</b>	<b>\$6,415,180</b>	<b>2.7%</b>	<b>-0.01%</b>	

Notes - Instant Ticket Variances

Texas Lottery Commission  
**Instant Tickets by Price Point**  
**Sales, Prize Expense, Sales Contribution and Payout Percentage With Year Over Year Changes**  
 Unaudited

			FY 2012		FY 2011	Difference
Sales	\$1 - \$7		\$514,243,050		\$527,195,303	-\$12,952,253
Prize Exp.	\$1 - \$7		\$340,572,742		\$350,599,057	-\$10,026,315
Sales Cont.	\$1 - \$7		\$173,670,308		\$176,596,246	-\$2,925,938
Prize Exp. %	\$1 - \$7		66.2%		66.5%	-0.3%
			FY 2012		FY 2011	Difference
Sales	\$10 - \$50		\$256,189,600		\$223,165,040	\$33,024,560
Prize Exp.	\$10 - \$50		\$186,526,554		\$162,843,113	\$23,683,442
Sales Cont.	\$10 - \$50		\$69,663,046		\$60,321,927	\$9,341,118
Prize Exp. %	\$10 - \$50		72.8%		73.0%	-0.2%
			FY 2012		FY 2011	Difference
Sales	Instant		\$770,432,650		\$750,360,343	\$20,072,307
Prize Exp.	Instant		\$527,099,296		\$513,442,169	\$13,657,127
Sales Cont.	Instant		\$243,333,354		\$236,918,174	\$6,415,180
Prize Exp. %	Instant		68.4%		68.4%	0.0%

			FY 2012		FY 2011	Difference
Sales	\$1 - \$10		\$640,240,720		\$625,460,683	\$14,780,037
Prize Exp.	\$1 - \$10		\$429,323,461		\$419,932,903	\$9,390,558
Sales Cont.	\$1 - \$10		\$210,917,259		\$205,527,780	\$5,389,479
Prize Exp. %	\$1 - \$10		67.1%		67.1%	-0.1%
			FY 2012		FY 2011	Difference
Sales	\$20 - \$50		\$130,191,930		\$124,899,660	\$5,292,270
Prize Exp.	\$20 - \$50		\$97,775,835		\$93,509,266	\$4,266,569
Sales Cont.	\$20 - \$50		\$32,416,095		\$31,390,394	\$1,025,701
Prize Exp. %	\$20 - \$50		75.1%		74.9%	0.2%
			FY 2012		FY 2011	Difference
Sales	Instant		\$770,432,650		\$750,360,343	\$20,072,307
Prize Exp.	Instant		\$527,099,296		\$513,442,169	\$13,657,127
Sales Cont.	Instant		\$243,333,354		\$236,918,174	\$6,415,180
Prize Exp. %	Instant		68.4%		68.4%	0.0%



Texas Lottery Commission  
**Weekly Sales Summary**  
**& Comparison to Previous Week**  
 Unaudited

	Week Ending 12/10/2011		Week Ending 12/03/11			
	<u>THIS WEEK</u>	% of Sales	<u>LAST WEEK</u>	% of Sales	<u>\$ change</u>	<u>% change</u>
Total Sales	<u>\$74,351,610</u>		<u>\$75,452,105</u>		<u>-\$1,100,495</u>	-1.46%
Instant Tickets	<u>\$55,318,284</u>	74.4%	<u>\$57,153,469</u>	75.7%	<u>-\$1,835,185</u>	-3.21%
Lotto	\$3,666,072	4.9%	\$3,744,456	5.0%	-\$78,384	-2.09%
Pick 3	\$5,168,509	7.0%	\$5,267,602	7.0%	-\$99,093	-1.88%
Pick 3 Sum It Up	\$106,265	0.1%	\$108,544	0.1%	-\$2,279	-2.10%
Cash Five	\$1,243,957	1.7%	\$1,264,649	1.7%	-\$20,692	-1.64%
Texas Two Step	\$1,030,979	1.4%	\$938,225	1.2%	\$92,754	9.89%
Mega Millions	\$3,462,326	4.7%	\$2,830,996	3.8%	\$631,330	22.30%
Megaplier	\$736,281	1.0%	\$636,924	0.8%	\$99,357	15.60%
Daily 4	\$1,235,834	1.7%	\$1,278,857	1.7%	-\$43,023	-3.36%
Daily 4 Sum It Up	\$89,131	0.1%	\$95,379	0.1%	-\$6,248	-6.55%
Powerball	\$1,850,570	2.5%	\$1,708,763	2.3%	\$141,807	8.30%
Power Play	\$443,403	0.6%	\$424,242	0.6%	\$19,161	4.52%
Total Online Sales	<u>\$19,033,326</u>		<u>\$18,298,636</u>		<u>\$734,690</u>	4.01%

\* Totals may not sum due to rounding.

Texas Lottery Commission  
Weekly Sales Summary  
Unaudited

INSTANT TICKETS  
TOP TEN SELLING GAMES

For the Week Ending : 12/10/11

Rank	Price Point	Game	Sales (Millions)
1	\$ 10	SEASON'S GREETINGS	\$ 3.384
2	\$ 20	MERRY MILLIONAIRE	\$ 3.244
3	\$ 5	SILVER BELLS	\$ 3.203
4	\$ 20	\$500,000,000 FRENZY	\$ 3.003
5	\$ 5	CASH BLAST	\$ 2.186
6	\$ 3	MERRY CROSSWORD	\$ 2.023
7	\$ 5	FUNKY 5'S	\$ 2.021
8	\$ 5	MEGA MONEY	\$ 1.959
9	\$ 3	BONUS CASHWORD	\$ 1.746
10	\$ 3	LOTERIA	\$ 1.723

Texas Lottery Commission  
Prize Payout Tracking Report  
Unaudited

Through Week Ending 12/10/11

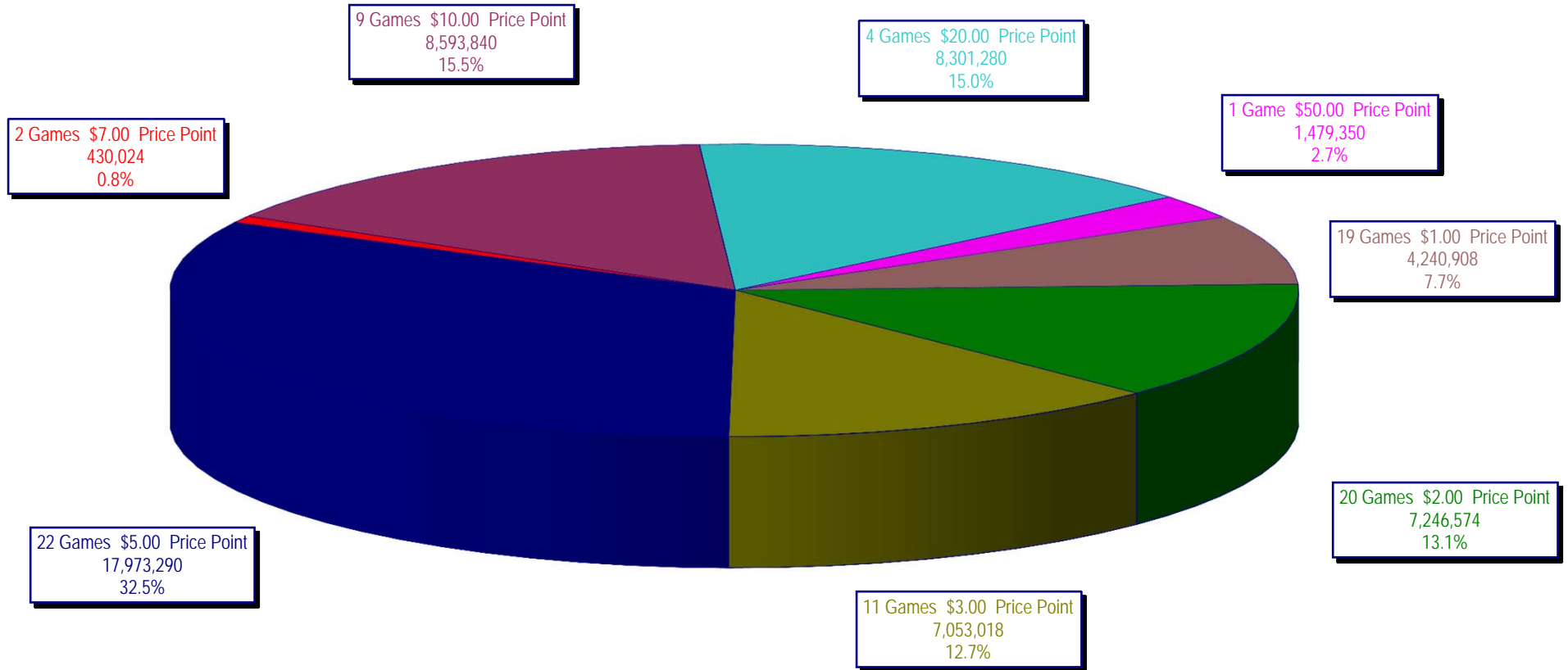
On-Line Sales

		FY Sales Through Week Ending 12/10/2011		FY Prize Expense Through Week Ending 12/10/2011	Actual* Prize Payout	Base Payout (Prize Pool)
Lotto	\$	49,347,717	\$	32,204,388	65.26%	50.00%
Pick 3		72,899,183		32,025,940	43.93%	50.00%
Pick 3 Sum It Up		1,482,301		649,584	43.82%	50.00%
Cash Five		17,741,614		8,922,695	50.29%	50.00%
Texas Two Step		17,006,934		8,562,328	50.35%	50.00%
Mega Millions		38,862,732		18,719,600	48.17%	50.00%**
Megaplier		8,830,853		5,010,932	56.74%	N/A
Daily 4		17,116,126		8,074,075	47.17%	50.00%
Daily 4 Sum It Up		1,281,757		507,055	39.56%	50.00%
Powerball		35,118,194		17,637,572	50.22%	50.00%**
Power Play		7,664,553		3,793,404	49.49%	N/A
<b>Totals</b>	\$	<b>267,351,964</b>	\$	<b>136,107,572</b>	<b>50.91%</b>	

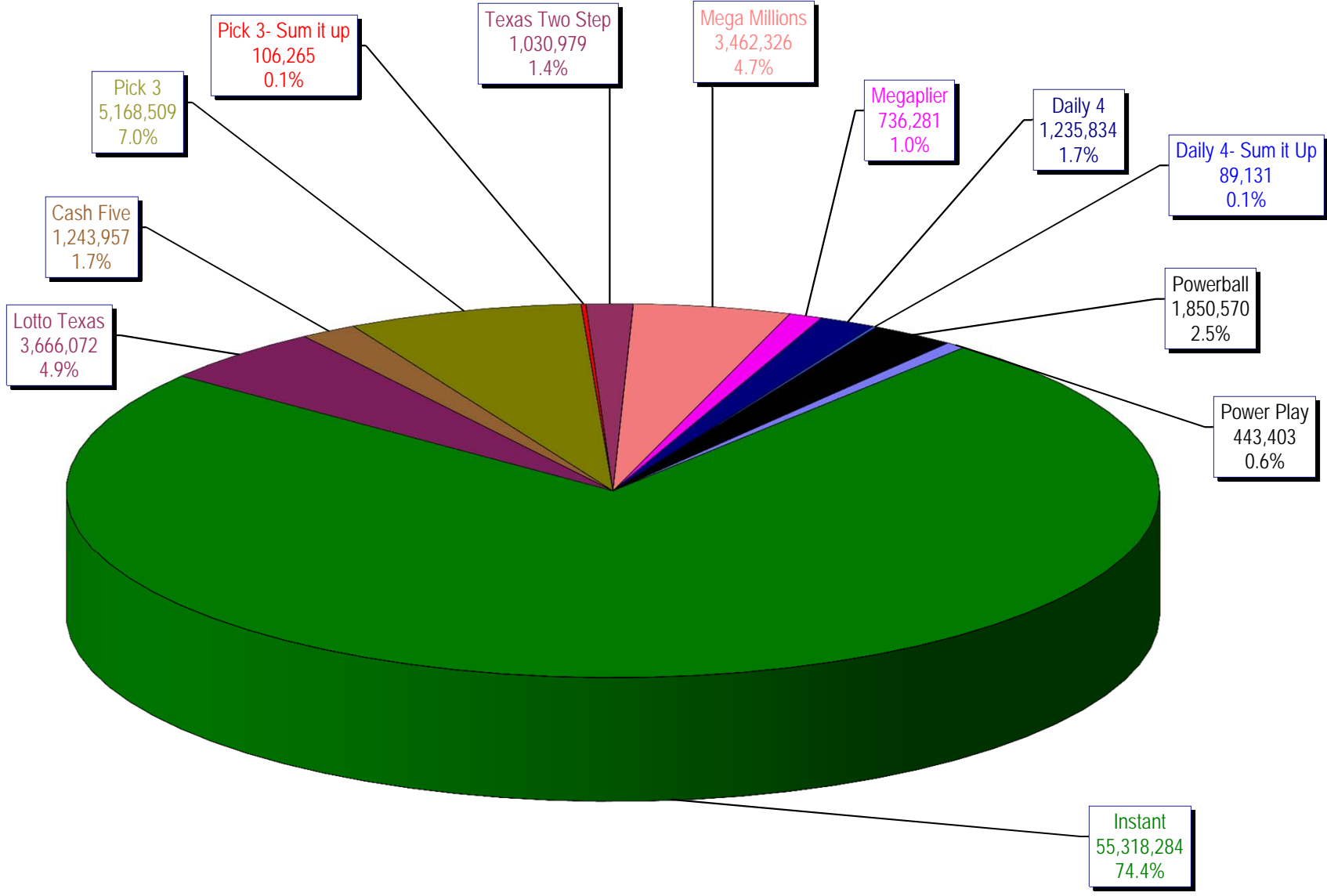
\* Before Unclaimed Prizes

\*\* Estimated; depends on # of guaranteed prizes won in Texas

Texas Lottery Commission  
Instant Ticket Sales  
For the Week Ending 12/10/11  
(Unaudited)



**Texas Lottery Commission  
All Game Sales  
For the Week Ending 12/10/11  
(Unaudited)**



Texas Lottery Commission - Weekly Sales Summary for FY 2012 (Unaudited)

Week Ended	Instant Games	New Games & Dates	Lotto Texas	Jackpot W S		Pick 3	Pick 3 Sum It Up	Cash Five	Texas Two Step	Jackpot M TH		Mega Millions	Jackpot T F		Megaplier	Daily 4	Daily 4 Sum It Up	Powerball	Jackpot W S		Power Play	Total	Per Cap.
9/3/2011	52,421,985	1340 (\$1,N); 1310 (\$2, N) - 08/29/11	3,710,974	23	24	5,228,940	100,997	1,239,134	989,988	225	300	2,248,664	21	29	539,246	1,221,178	93,318	2,401,555	75	91	530,686	70,726,664	2.81
9/10/2011	50,591,068	1360 (\$3, N) - 09/05/11	3,329,350	25	4	5,103,026	99,259	1,198,563	935,771	450	200	2,387,766	37	44	557,225	1,180,505	88,443	2,295,315	107	20	506,631	68,272,921	2.71
9/17/2011	49,835,063	0	3,031,798	5	6	4,953,079	100,990	1,210,562	961,592	225	300	2,801,526	54	65	626,459	1,125,230	83,532	1,560,522	25	20	387,037	66,677,389	2.64
9/24/2011	49,777,138	1362(\$1, N); 1363(\$5,N); 1364(\$5,N) - 09/19/11	3,083,973	7	8	4,819,453	97,999	1,200,444	1,283,472	450	600	3,206,022	75	86	692,909	1,092,294	82,198	1,561,655	25	30	384,383	67,281,938	2.67
10/1/2011	51,040,274	1365(\$2,N) - 09/26/11	3,196,730	9	10	4,846,896	97,026	1,215,715	1,146,613	800	200	4,033,330	96	113	830,660	1,096,271	83,993	1,693,809	37	47	412,058	69,693,374	2.76
10/8/2011	53,715,157	1366(\$1,N) - 10/03/11	3,231,892	11	12	5,064,771	102,919	1,252,733	1,004,251	225	300	2,176,684	12	14	527,777	1,188,636	92,825	2,103,034	58	71	480,159	70,940,837	2.81
10/15/2011	51,942,121	1367 (\$7, N) - 10/10/11	3,230,925	13	14	4,776,985	99,008	1,214,385	1,337,436	450	625	2,260,036	22	30	542,787	1,132,415	84,772	2,613,215	86	105	563,017	69,797,101	2.77
10/22/2011	52,837,769	1369 (\$1, N); 1370 (\$5, N) - 10/17/11	3,250,317	15	16	4,784,201	98,306	1,202,768	1,887,302	825	1,050	2,386,255	39	48	561,705	1,130,353	83,722	3,477,867	124	148	695,724	72,396,288	2.87
10/29/2011	52,206,644	1371 (\$2, N) - 10/24/11	3,302,201	17	18	4,685,786	95,887	1,186,987	2,055,399	1,300	1,550	2,592,752	57	67	596,631	1,107,441	82,921	4,895,300	173	203	903,261	73,711,209	2.92
11/5/2011	56,265,310	1373 (\$10, N) - 10/31/11	3,570,825	19	20	5,165,835	105,793	1,240,514	910,036	200	200	2,497,308	78	12	583,481	1,222,706	92,619	4,617,172	245	20	863,799	77,135,396	3.06
11/12/2011	55,682,645	1375 (\$3, N); 1374 (\$1, N) - 11/07/11	3,673,137	21	22	5,298,645	109,575	1,268,630	961,349	225	200	2,362,698	15	22	552,133	1,235,272	92,025	1,861,697	25	35	447,243	73,545,049	2.92
11/19/2011	54,978,079	1376(\$2, N); 1377 (\$5, N) - 11/14/11	3,575,231	23	24	5,216,095	106,956	1,246,366	1,059,355	225	325	2,300,050	30	40	550,825	1,224,365	89,978	2,033,222	46	60	477,542	72,858,064	2.89
11/26/2011	53,942,448	1372 (\$5, N) - 11/21/11	3,499,908	25	26	4,943,420	100,352	1,179,174	998,175	500	200	2,377,399	47	55	555,760	1,215,090	90,416	1,527,546	20	25	389,905	70,819,593	2.81
12/3/2011	57,153,469	0	3,744,456	27	28	5,267,602	108,544	1,264,649	938,225	225	200	2,830,996	64	75	636,924	1,278,857	95,379	1,708,763	31	40	424,242	75,452,105	2.99
12/10/2011	55,318,284	1378 (\$1, N); 1322 (\$5, N) - 12/5/11; 1389 (\$1, N) - 12/6/11	3,666,072	29	30	5,168,509	106,265	1,243,957	1,030,979	225	325	3,462,326	87	100	736,281	1,235,834	89,131	1,850,570	52	67	443,403	74,351,610	2.95
weekly change	-3.2%		-2.1%			-1.9%	-2.1%	-1.6%	9.9%			22.3%			15.6%	-3.4%	-6.6%	8.3%			4.5%	-1.5%	
	<b>SALES</b>		<b>SALES</b>			<b>SALES</b>	<b>SALES</b>	<b>SALES</b>	<b>SALES</b>			<b>SALES</b>			<b>SALES</b>	<b>SALES</b>	<b>SALES</b>	<b>SALES</b>			<b>SALES</b>	<b>SALES</b>	<b>% of Sales</b>
Startup to date	42,645,790,852		10,957,353,776			4,200,259,504	24,785,634	2,338,650,275	594,841,401			1,524,294,457			348,966,024	218,118,814	24,251,197	191,510,078			43,927,898	63,320,883,881	100.0%
Calendar Year to date	2,690,894,185		165,907,250			256,627,819	123,957	61,074,953	51,608,685			159,071,569			34,312,254	56,971,473	4,235,391	108,568,586			24,111,628	3,613,507,749	100.0%
Fiscal Year to date 2012	770,432,650		49,347,717			72,899,183	1,482,301	17,741,614	17,006,934			38,862,732			8,830,853	17,116,126	1,281,757	35,118,194			7,664,553	1,037,784,614	100.0%