



WEEKLY SALES SUMMARY

Unaudited

[Week Ending: 12/12/2015](#)

Texas Lottery Commission
Fiscal Year to Date Sales Comparison
Unaudited

Through the Week Ending 12/12/2015 (15 Weeks)

Sales by Game	FY 2014 *	FY 2015 **	FY 2016	\$ Change		% Change	
				FY 2016 to FY 2014	FY 2016 to FY 2015	FY 2016 to FY 2014	FY 2016 to FY 2015
Scratch Tickets	\$ 899,738,230	\$ 932,824,349	\$ 963,845,070	\$ 64,106,840	\$ 31,020,721	7.1%	3.3%
Lotto Texas	38,225,458	34,279,301	35,787,417	-2,438,041	1,508,116	-6.4%	4.4%
Lotto Extra	4,891,214	5,172,178	6,042,082	1,150,868	869,904	23.5%	16.8%
Pick 3	72,396,507	71,206,330	71,221,668	-1,174,839	15,338	-1.6%	0.0%
Pick 3 Sum It Up	1,431,590	1,361,770	1,421,995	-9,595	60,225	-0.7%	4.4%
Cash Five	15,148,678	14,194,888	13,170,696	-1,977,982	-1,024,192	-13.1%	-7.2%
Texas Two Step	15,722,451	16,244,941	14,843,231	-879,220	-1,401,710	-5.6%	-8.6%
Mega Millions	58,895,810	45,130,890	35,640,581	-23,255,229	-9,490,309	-39.5%	-21.0%
Megaplier	12,426,101	10,248,726	8,914,829	-3,511,272	-1,333,897	-28.3%	-13.0%
Daily 4	23,909,056	23,966,705	24,456,072	547,016	489,367	2.3%	2.0%
Daily 4 Sum It Up	1,473,494	1,439,192	1,261,288	-212,206	-177,904	-14.4%	-12.4%
Powerball	66,992,017	48,748,645	56,559,244	-10,432,773	7,810,599	-15.6%	16.0%
Power Play	7,811,698	6,389,196	7,414,127	-397,571	1,024,931	-5.1%	16.0%
All or Nothing	13,522,512	11,250,312	8,919,400	-4,603,112	-2,330,912	-34.0%	-20.7%
Monopoly	- ¹	2,656,700	-	-	-2,656,700	-	-100.0%
Texas Triple Chance	-	-	7,713,511	7,713,511	7,713,511	-	-
Total	\$ 1,232,584,815	\$ 1,225,114,123	\$ 1,257,211,210	\$ 24,626,395	\$ 32,097,087	2.0%	2.6%

* 2 extra days

** 1 extra day

¹ Monopoly sales were suspended after draw on 12/12/14

Texas Lottery Commission
Fiscal Year to Date Cumulative Average Sales Comparison
Unaudited

Through the Week Ending 12/12/2015 (15 Weeks)

Sales by Game	FY 2014	FY 2015	FY 2016
Scratch Tickets	\$ 8,568,936	\$ 8,969,465	\$ 9,357,719
Lotto Texas	364,052	329,609	347,451
Lotto Extra	46,583	49,732	58,661
Pick 3	689,491	684,676	691,473
Pick 3 Sum It Up	13,634	13,094	13,806
Cash Five	144,273	136,489	127,871
Texas Two Step	149,738	156,201	144,109
Mega Millions	560,912	433,951	346,025
Megaplier	118,344	98,545	86,552
Daily 4	227,705	230,449	237,438
Daily 4 Sum It Up	14,033	13,838	12,246
Powerball	638,019	468,737	549,119
Power Play	74,397	61,435	71,982
All or Nothing	128,786	108,176	86,596
Monopoly	- **	48,304	-
Texas Triple Chance	- *	-	100,175
Total	\$ 11,738,903	\$ 11,802,702	\$ 12,231,221

thru 12/14/2013
105 days

**

thru 12/13/2014
104 days
55 days

*

thru 12/12/2015
103 days
77 days

Texas Lottery Commission
Fiscal Year Over Year Change in Sales
Unaudited
FY 2016 Compared to FY 2015

			SCRATCH TICKETS				DRAW GAMES				TOTAL SALES			
Week	FY 2016		FY 2015	Difference	% change - Cumulative Sales	FY 2016	FY 2015	Difference	% change - Cumulative Sales	FY 2016	FY 2015	Difference	% change - Cumulative Sales	
	Week	Ending												
1	9/5/2015 *		\$49,534,249	\$54,911,801	(\$5,377,552)	-9.8%	\$17,091,724	\$17,482,488	(\$390,765)	-2.2%	\$66,625,973	\$72,394,289	(\$5,768,317)	-8.0%
2	9/12/2015		\$61,566,291	\$61,436,533	\$129,758	0.2%	\$20,630,922	\$19,097,081	\$1,533,841	8.0%	\$82,197,213	\$80,533,614	\$1,663,599	2.1%
3	9/19/2015		\$63,530,657	\$60,959,234	\$2,571,423	4.2%	\$20,327,253	\$20,567,894	(\$240,641)	-1.2%	\$83,857,910	\$81,527,128	\$2,330,782	2.9%
4	9/26/2015		\$61,731,400	\$59,710,056	\$2,021,344	3.4%	\$22,252,290	\$19,920,828	\$2,331,462	11.7%	\$83,983,690	\$79,630,884	\$4,352,806	5.5%
5	10/3/2015		\$67,048,415	\$62,119,854	\$4,928,561	7.9%	\$25,436,791	\$18,531,421	\$6,905,370	37.3%	\$92,485,206	\$80,651,275	\$11,833,931	14.7%
6	10/10/2015		\$66,049,706	\$61,253,665	\$4,796,041	7.8%	\$18,138,977	\$18,985,332	(\$846,355)	-4.5%	\$84,188,683	\$80,238,997	\$3,949,687	4.9%
7	10/17/2015		\$65,073,593	\$60,230,048	\$4,843,545	8.0%	\$17,776,414	\$19,538,402	(\$1,761,988)	-9.0%	\$82,850,007	\$79,768,450	\$3,081,558	3.9%
8	10/24/2015		\$64,087,437	\$62,384,112	\$1,703,325	2.7%	\$18,450,464	\$21,475,643	(\$3,025,179)	-14.1%	\$82,537,901	\$83,859,755	(\$1,321,854)	-1.6%
9	10/31/2015		\$66,025,374	\$63,404,713	\$2,620,661	4.1%	\$19,568,150	\$23,568,817	(\$4,000,668)	-17.0%	\$85,593,524	\$86,973,530	(\$1,380,007)	-1.6%
10	11/7/2015		\$68,137,192	\$65,486,719	\$2,650,473	4.0%	\$20,398,351	\$23,749,032	(\$3,350,681)	-14.1%	\$88,535,543	\$89,235,751	(\$700,208)	-0.8%
11	11/14/2015		\$65,449,428	\$61,745,521	\$3,703,907	6.0%	\$20,169,382	\$17,449,604	\$2,719,779	15.6%	\$85,618,810	\$79,195,125	\$6,423,686	8.1%
12	11/21/2015		\$68,364,421	\$66,353,583	\$2,010,838	3.0%	\$17,174,606	\$17,108,084	\$66,522	0.4%	\$85,539,027	\$83,461,667	\$2,077,360	2.5%
13	11/28/2015		\$61,091,628	\$60,471,184	\$620,444	1.0%	\$17,168,993	\$17,303,129	(\$134,136)	-0.8%	\$78,260,621	\$77,774,313	\$486,309	0.6%
14	12/5/2015		\$67,830,827	\$66,648,696	\$1,182,131	1.8%	\$19,252,418	\$18,862,425	\$389,994	2.1%	\$87,083,245	\$85,511,121	\$1,572,125	1.8%
15	12/12/2015		\$68,324,452	\$65,708,630	\$2,615,822	4.0%	\$19,529,408	\$18,649,598	\$879,811	4.7%	\$87,853,860	\$84,358,228	\$3,495,633	4.1%
16	12/19/2015			\$68,551,298				\$19,051,100				\$87,602,398		
17	12/26/2015			\$73,858,618				\$20,006,357				\$93,864,975		
18	1/2/2016			\$67,733,268				\$21,355,167				\$89,088,435		
19	1/9/2016			\$64,745,641				\$22,265,347				\$87,010,988		
20	1/16/2016			\$64,015,166				\$23,694,617				\$87,709,783		
21	1/23/2016			\$62,569,156				\$19,765,442				\$82,334,598		
22	1/30/2016			\$68,001,588				\$22,877,000				\$90,878,588		
23	2/6/2016			\$75,677,650				\$31,662,209				\$107,339,859		
24	2/13/2016			\$75,368,712				\$46,091,747				\$121,460,459		
25	2/20/2016			\$74,833,076				\$19,865,172				\$94,698,248		
26	2/27/2016			\$69,918,013				\$19,735,352				\$89,653,365		
27	3/5/2016			\$74,848,961				\$19,946,068				\$94,795,029		
28	3/12/2016			\$70,079,409				\$20,044,562				\$90,123,971		
29	3/19/2016			\$70,368,686				\$18,480,795				\$88,849,481		
30	3/26/2016			\$70,280,600				\$17,595,205				\$87,875,805		
31	4/2/2016			\$74,369,952				\$18,378,917				\$92,748,869		
32	4/9/2016			\$67,416,817				\$18,594,844				\$86,011,661		
33	4/16/2016			\$68,393,316				\$18,104,632				\$86,497,948		
34	4/23/2016			\$70,078,182				\$17,957,150				\$88,035,332		
35	4/30/2016			\$71,744,718				\$18,961,113				\$90,705,831		
36	5/7/2016			\$73,415,978				\$20,210,341				\$93,626,319		
37	5/14/2016			\$72,152,109				\$20,362,774				\$92,514,883		
38	5/21/2016			\$70,399,950				\$21,246,276				\$91,646,226		
39	5/28/2016			\$68,547,554				\$22,227,946				\$90,775,500		
40	6/4/2016			\$71,254,006				\$20,739,703				\$91,993,709		
41	6/11/2016			\$65,878,375				\$17,216,403				\$83,094,778		
42	6/18/2016			\$66,658,742				\$17,340,531				\$83,999,273		

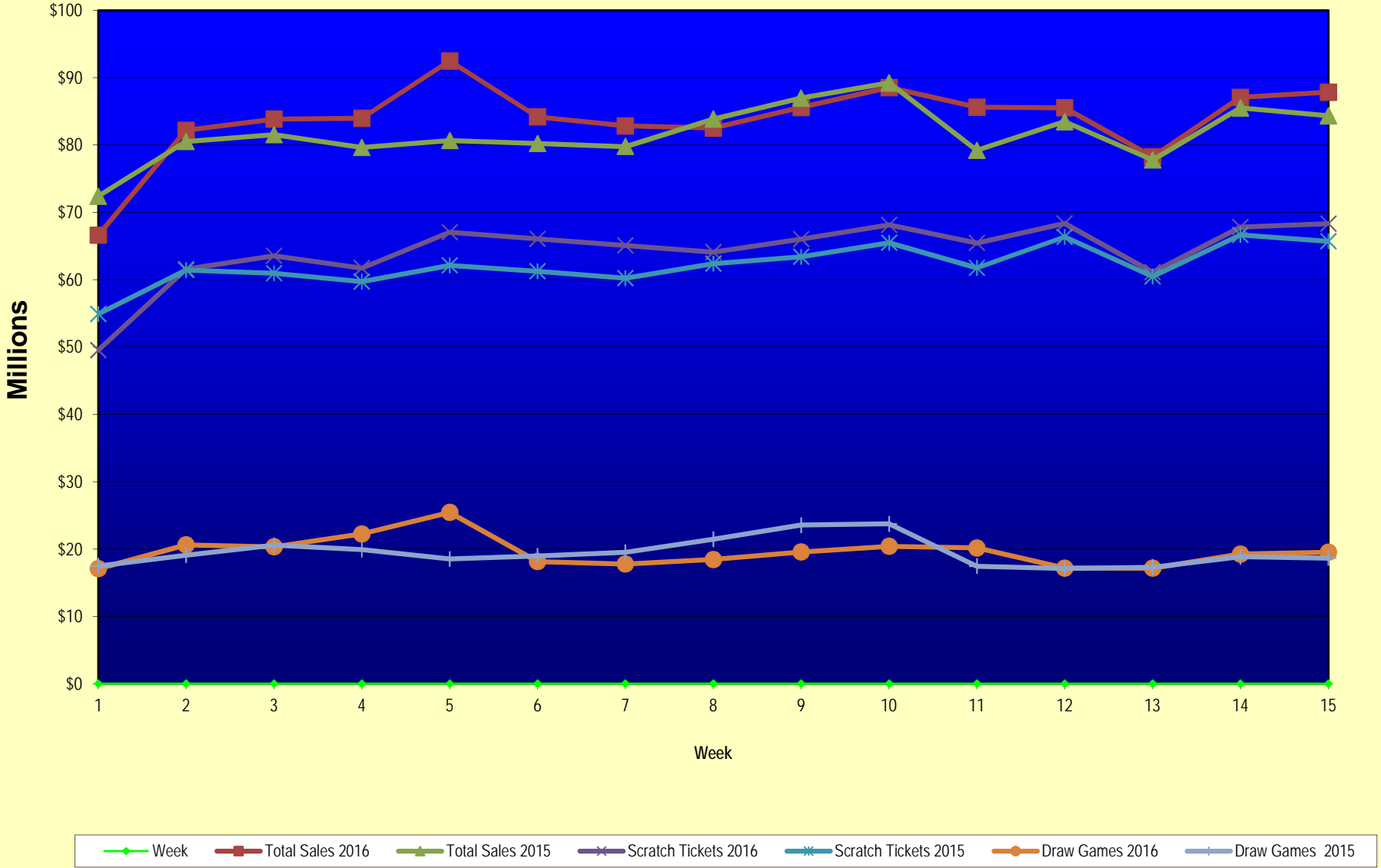
Texas Lottery Commission
Fiscal Year Over Year Change in Sales
Unaudited
FY 2016 Compared to FY 2015

			SCRATCH TICKETS				DRAW GAMES				TOTAL SALES			
FY 2016			FY 2016	FY 2015	Difference	% change - Cumulative Sales	FY 2016	FY 2015	Difference	% change - Cumulative Sales	FY 2016	FY 2015	Difference	% change - Cumulative Sales
Week	Week	Ending												
43	6/25/2016			\$65,282,276				\$16,873,368				\$82,155,644		
44	7/2/2016			\$67,757,752				\$18,007,540				\$85,765,292		
45	7/9/2016			\$64,718,254				\$18,203,985				\$82,922,239		
46	7/16/2016			\$64,957,977				\$18,792,785				\$83,750,762		
47	7/23/2016			\$62,541,241				\$18,229,965				\$80,771,206		
48	7/30/2016			\$66,468,460				\$17,742,489				\$84,210,949		
49	8/6/2016			\$62,412,598				\$17,331,374				\$79,743,972		
50	8/13/2016			\$62,089,389				\$17,501,599				\$79,590,988		
51	8/20/2016			\$62,437,148				\$17,779,458				\$80,216,606		
52	8/27/2016			\$61,403,206				\$18,529,560				\$79,932,766		
	8/31/2016 **			\$17,309,621				\$3,279,958				\$20,589,579		
Total thru Current Week			\$963,845,070	\$932,824,349	\$31,020,721	3.3%	\$293,366,140	\$292,289,774	\$1,076,366	0.4%	\$1,257,211,210	\$1,225,114,123	\$32,097,087	2.6%
Fiscal Year Total			\$963,845,070	\$3,481,361,812			\$293,366,140	\$1,048,338,613			\$1,257,211,210	\$4,529,700,425		

* FY 16 includes 5 days; FY 15 includes 6 days

** FY 16 includes 4 days; FY 15 includes 2 days

Texas Lottery Commission Fiscal Year Over Year Change in Sales



Note: Week 1 is not a full week of sales as this report is prepared on a Fiscal Year basis.

Texas Lottery Commission
Scratch Tickets by Price Point
Sales, Prize Expense, Sales Contribution and Payout Percentage With Year Over Year Changes
Unaudited

Fiscal Year	Price Point	# of Active Games	FY Sales	% of Scratch Ticket Sales	Year over Year Change in Sales	FY Prize Expense	Year over Year Change in Prize Expense	FY Sales Contribution	Year over Year Change in Contribution	Average Prize Payout %	Year over Year Change in Payout %
2015	\$1.00	17	47,267,079	5.1%		29,005,598		18,261,481		61.4%	2.4%
Through	\$2.00	26	97,425,530	10.4%		64,521,563		32,903,967		66.2%	2.1%
12/13/2014	\$3.00	12	92,254,815	9.9%		60,803,112		31,451,703		65.9%	0.4%
	\$5.00	37	297,209,005	31.9%		201,911,326		95,297,679		67.9%	0.0%
	\$10.00	13	184,544,700	19.8%		130,222,505		54,322,195		70.6%	0.4%
	\$20.00	8	171,395,920	18.4%		128,517,097		42,878,823		75.0%	0.1%
	\$50.00	3	42,727,300	4.6%		33,205,757		9,521,543		77.7%	0.1%
Total		116	\$932,824,349			\$648,186,957		\$284,637,392		69.5%	0.8%
2016	\$1.00	14	42,636,060	4.4%		25,791,359		16,844,701		60.5%	0.0%
thru	\$2.00	26	96,533,098	10.0%		62,792,020		33,741,078		65.0%	-0.7%
12/12/2015	\$3.00	9	82,557,597	8.6%		54,325,864		28,231,733		65.8%	-0.2%
	\$5.00	41	308,236,955	32.0%		209,414,322		98,822,633		67.9%	0.0%
	\$10.00	14	192,512,970	20.0%		134,881,718		57,631,252		70.1%	-0.3%
	\$20.00	9	193,801,140	20.1%		145,238,776		48,562,364		74.9%	0.0%
	\$50.00	3	47,567,250	4.9%		36,994,827		10,572,423		77.8%	0.0%
Total		116	\$963,845,070			\$669,438,886		\$294,406,184		69.5%	0.0%
Variance	\$1.00	-3	-4,631,019		-9.8%	-3,214,239	-11.1%	-1,416,780	-7.8%	-0.87%	
2016 to	\$2.00	0	-892,432		-0.9%	-1,729,542	-2.7%	837,110	2.5%	-1.18%	
2015	\$3.00	-3	-9,697,218		-10.5%	-6,477,248	-10.7%	-3,219,970	-10.2%	-0.10%	
	\$5.00	4	11,027,950		3.7%	7,502,996	3.7%	3,524,954	3.7%	0.00%	
	\$10.00	1	7,968,270		4.3%	4,659,214	3.6%	3,309,056	6.1%	-0.50%	
	\$20.00	1	22,405,220		13.1%	16,721,678	13.0%	5,683,542	13.3%	-0.04%	
	\$50.00	0	4,839,950		11.3%	3,789,071	11.4%	1,050,879	11.0%	0.06%	
Total		0	\$31,020,721		3.3%	\$21,251,929	3.3%	\$9,768,792	3.4%	-0.03%	

Notes - Scratch Ticket Variances

Texas Lottery Commission
Scratch Tickets by Price Point
Sales, Prize Expense, Sales Contribution and Payout Percentage With Year Over Year Changes
Unaudited

			FY 2016		FY 2015	Difference
Sales	\$1 - \$5		\$529,963,710		\$534,156,429	-\$4,192,719
Prize Exp.	\$1 - \$5		\$352,323,565		\$356,241,598	-\$3,918,034
Sales Cont.	\$1 - \$5		\$177,640,145		\$177,914,831	-\$274,685
Prize Exp. %	\$1 - \$5		66.5%		66.7%	-0.2%
			FY 2016		FY 2015	Difference
Sales	\$10 - \$50		\$433,881,360		\$398,667,920	\$35,213,440
Prize Exp.	\$10 - \$50		\$317,115,322		\$291,945,359	\$25,169,962
Sales Cont.	\$10 - \$50		\$116,766,038		\$106,722,561	\$10,043,478
Prize Exp. %	\$10 - \$50		73.1%		73.2%	-0.1%
			FY 2016		FY 2015	Difference
Sales	Scratch		\$963,845,070		\$932,824,349	\$31,020,721
Prize Exp.	Scratch		\$669,438,886		\$648,186,957	\$21,251,929
Sales Cont.	Scratch		\$294,406,184		\$284,637,392	\$9,768,792
Prize Exp. %	Scratch		69.5%		69.5%	0.0%

			FY 2016		FY 2015	Difference
Sales	\$1 - \$10		\$722,476,680		\$718,701,129	\$3,775,551
Prize Exp.	\$1 - \$10		\$487,205,283		\$486,464,103	\$741,180
Sales Cont.	\$1 - \$10		\$235,271,397		\$232,237,026	\$3,034,371
Prize Exp. %	\$1 - \$10		67.4%		67.7%	-0.3%
			FY 2016		FY 2015	Difference
Sales	\$20 - \$50		\$241,368,390		\$214,123,220	\$27,245,170
Prize Exp.	\$20 - \$50		\$182,233,603		\$161,722,854	\$20,510,749
Sales Cont.	\$20 - \$50		\$59,134,787		\$52,400,366	\$6,734,421
Prize Exp. %	\$20 - \$50		75.5%		75.5%	0.0%
			FY 2016		FY 2015	Difference
Sales	Scratch		\$963,845,070		\$932,824,349	\$31,020,721
Prize Exp.	Scratch		\$669,438,886		\$648,186,957	\$21,251,929
Sales Cont.	Scratch		\$294,406,184		\$284,637,392	\$9,768,792
Prize Exp. %	Scratch		69.5%		69.5%	0.0%

Texas Lottery Commission
Weekly Sales Summary
& Comparison to Previous Week
 Unaudited

	Week Ending 12/12/2015	% of Sales	Week Ending 12/05/2015	% of Sales	\$ change	% change
	<u>THIS WEEK</u>		<u>LAST WEEK</u>			
Total Sales	<u>\$87,853,860</u>		<u>\$87,083,245</u>		<u>\$770,615</u>	0.88%
Scratch Tickets	<u>\$68,324,452</u>	77.8%	<u>\$67,830,827</u>	77.9%	<u>\$493,625</u>	0.73%
Lotto	\$2,281,004	2.6%	\$2,245,481	2.6%	\$35,523	1.58%
Lotto Extra	\$391,281	0.4%	\$385,346	0.4%	\$5,935	1.54%
Pick 3	\$4,980,397	5.7%	\$5,020,926	5.8%	-\$40,529	-0.81%
Pick 3 Sum It Up	\$94,549	0.1%	\$94,445	0.1%	\$105	0.11%
Cash Five	\$877,611	1.0%	\$898,598	1.0%	-\$20,987	-2.34%
Texas Two Step	\$815,777	0.9%	\$957,116	1.1%	-\$141,339	-14.77%
Mega Millions	\$2,160,601	2.5%	\$2,073,099	2.4%	\$87,502	4.22%
Megaplier	\$555,974	0.6%	\$545,451	0.6%	\$10,523	1.93%
Daily 4	\$1,746,314	2.0%	\$1,789,318	2.1%	-\$43,005	-2.40%
Daily 4 Sum It Up	\$86,684	0.1%	\$94,198	0.1%	-\$7,514	-7.98%
Powerball	\$3,835,044	4.4%	\$3,432,248	3.9%	\$402,796	11.74%
Power Play	\$508,111	0.6%	\$467,917	0.5%	\$40,194	8.59%
All or Nothing	\$592,212	0.7%	\$603,222	0.7%	-\$11,010	-1.83%
Texas Triple Chance	\$603,850	0.7%	\$645,054	0.7%	-\$41,204	-6.39%
Total Draw Game Sales	<u>\$19,529,408</u>		<u>\$19,252,418</u>		<u>\$276,990</u>	1.44%

* Totals may not sum due to rounding.

Texas Lottery Commission
Weekly Sales Summary
Unaudited

SCRATCH TICKETS
TOP TEN SELLING GAMES

For the week ending: 12/12/2015

Rank	Price Point	Game	Sales (Millions)
1	\$ 20	HOLIDAY GAME BOOK	\$ 4.306
2	\$ 10	HAPPY HOLIDAYS	\$ 3.731
3	\$ 20	\$1,000,000 INSTANT CASHOUT	\$ 2.940
4	\$ 10	CASHWORD MULTIPLIER	\$ 2.774
5	\$ 20	\$500,000,000 CASH	\$ 2.677
6	\$ 50	DIAMOND DOLLARS	\$ 2.671
7	\$ 5	HOLIDAY TREASURES	\$ 2.574
8	\$ 5	SUPER LOTERIA	\$ 2.462
9	\$ 3	BONUS CASHWORD	\$ 2.235
10	\$ 5	MERRY MONEY	\$ 2.229

Texas Lottery Commission
Prize Payout Tracking Report
Unaudited

Through the week ending: 12/12/2015

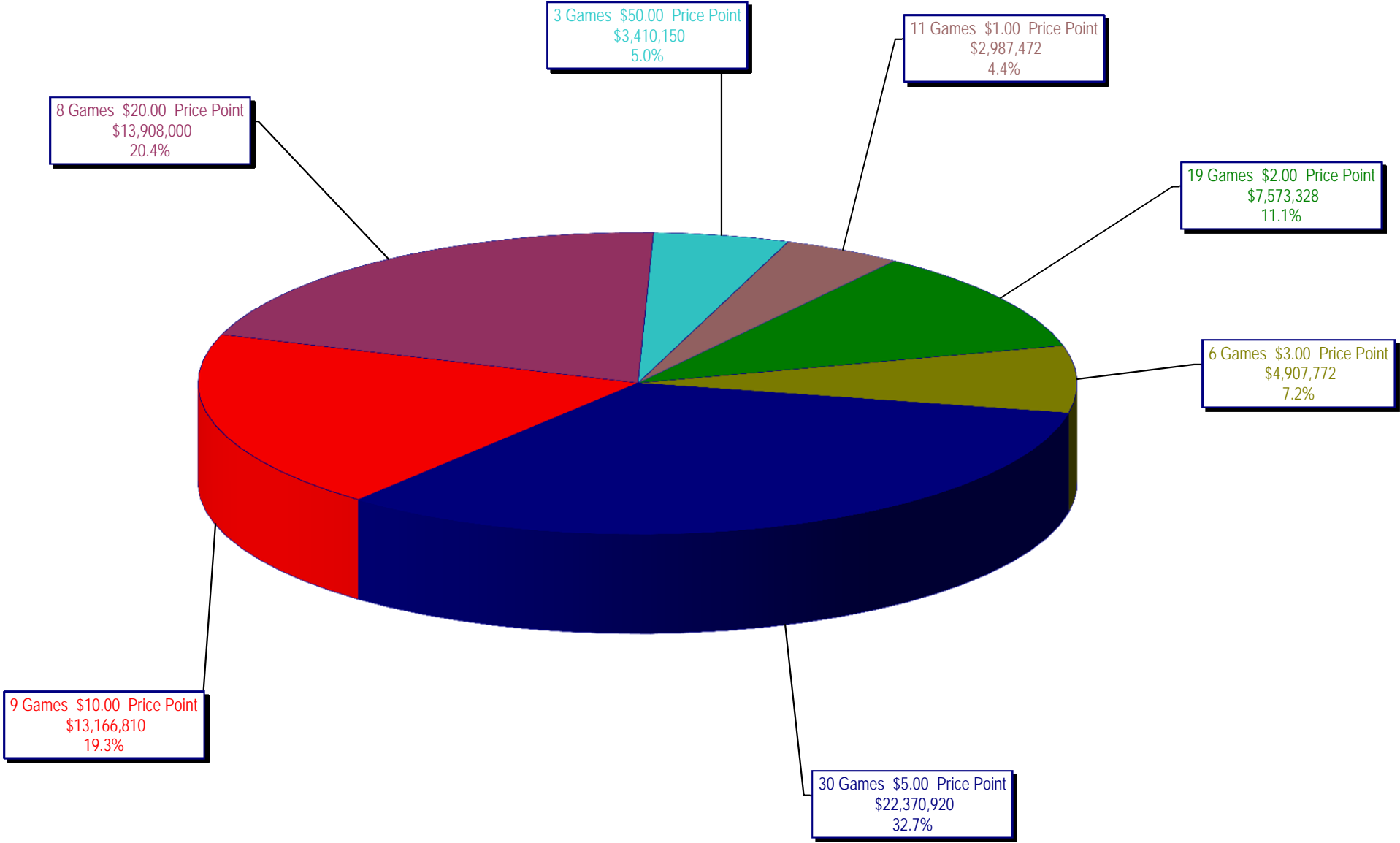
Draw Game Sales

		FY Sales Through Week Ending 12/12/2015		FY Prize Expense Through Week Ending 12/12/2015	Actual* Prize Payout	Base Payout (Prize Pool)
Lotto	\$	35,787,417	\$	23,840,680	66.62%	50.00%
Lotto Extra		6,042,082		3,043,220	50.37%	53.70%
Pick 3		71,221,668		35,346,080	49.63%	50.00%
Pick 3 Sum It Up		1,421,995		705,673	49.63%	50.00%
Cash Five		13,170,696		6,585,348	50.00%	50.00%
Texas Two Step		14,843,231		7,537,760	50.78%	50.00%
Mega Millions		35,640,581		18,343,041	51.47%	50.00%**
Megaplier		8,914,829		4,496,054	50.43%	N/A
Daily 4		24,456,072		11,492,975	46.99%	50.00%
Daily 4 Sum It Up		1,261,288		454,300	36.02%	50.00%
Powerball		56,559,244		28,495,134	50.38%	50.00%**
Power Play		7,414,127		3,735,201	50.38%	N/A
All or Nothing		8,919,400		4,658,240	52.23%	55.98%
Texas Triple Chance		7,713,511		4,709,044	61.05%	54.42%
Totals	\$	293,366,140	\$	153,442,750	52.30%	

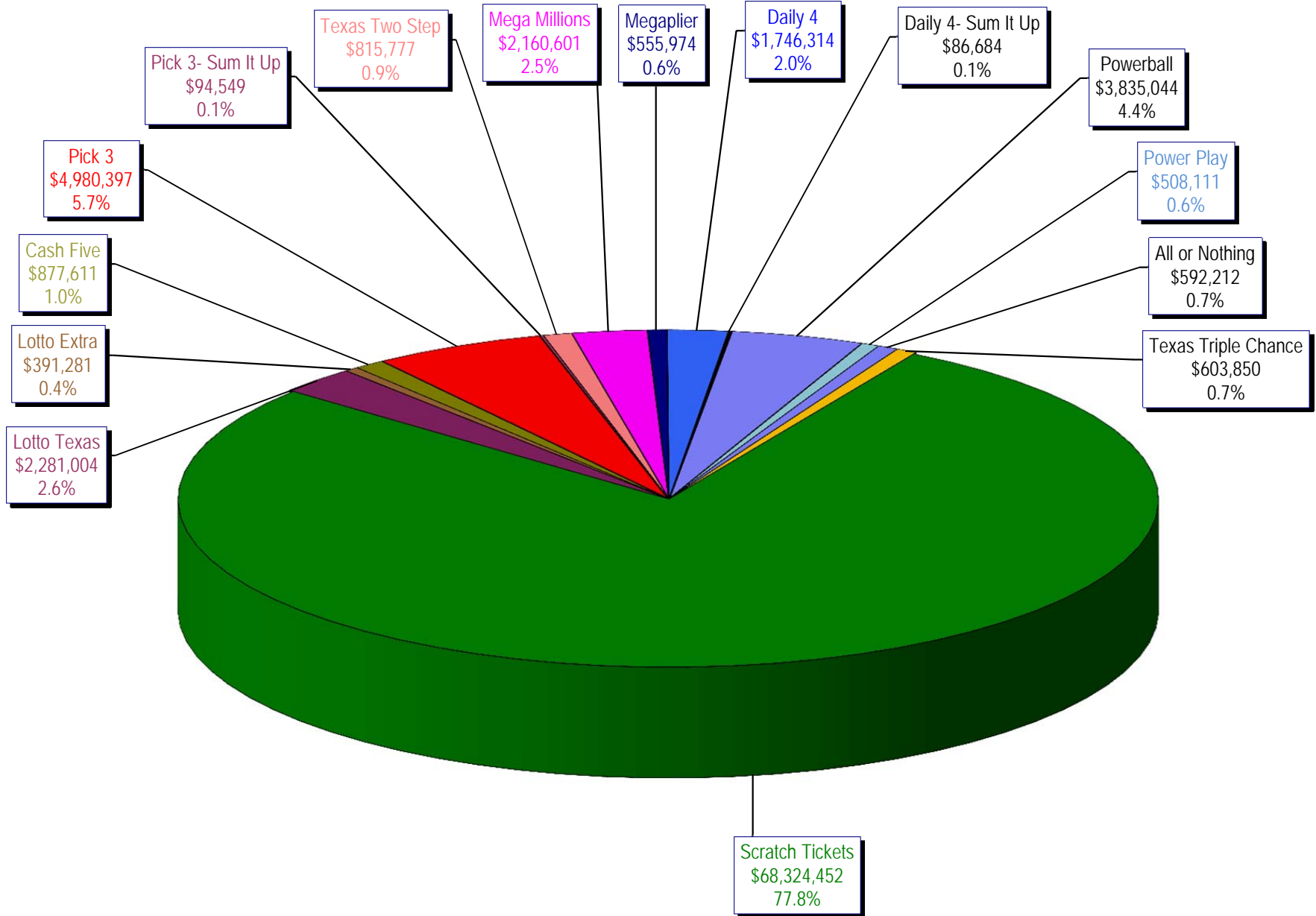
* Before Unclaimed Prizes

** Estimated; depends on # of guaranteed prizes won in Texas

Texas Lottery Commission
Scratch Ticket Sales
For the week ending 12/12/15
(Unaudited)



Texas Lottery Commission
All Game Sales
For the week ending 12/12/15
(Unaudited)



Texas Lottery Commission - Weekly Sales Summary for FY 2016 (Unaudited)

Week Ended	Scratch Tickets	New Games & Dates	Lotto Texas	Jackpot W	S	Lotto Extra	Pick 3	Pick 3 Sum It Up	Cash Five	Texas Two Step	Jackpot M	TH	Mega Millions	Jackpot T	F	Megaplier	Daily 4	Daily 4 Sum It Up	Powerball	Jackpot W	S	Power Play	All or Nothing	Monopoly	Jackpot F	Texas Triple Chance	Total	Per Cap.
9/5/2015*	66,843,870	0	2,788,509	25	26	466,121	5,249,348	117,979	956,126	1,253,100	425	575	2,366,640	74	85	608,901	1,725,027	93,067	3,586,482	120	133	484,769	675,614	0			87,215,551	3.24
9/12/2015	61,566,291	1717 (\$1.N); 1718 (\$5.N); 1748 (\$10.N); 1696 (\$3.N) - 9/08/15	2,793,426	26.5	27.75	465,451	4,974,238	103,203	919,536	1,423,604	725	950	2,511,039	95	106	629,091	1,641,226	86,539	3,927,126	149	167	518,060	638,384	0			82,197,213	3.05
9/19/2015	63,530,657	0	2,845,557	28.25	29.5	475,307	4,715,566	95,242	928,275	854,109	200	225	1,817,155	15	20	487,946	1,647,829	81,483	5,082,782	185	208	639,614	656,388	0			83,857,910	3.11
9/26/2015	61,731,400	1720 (\$2.N); 1721 (\$5.N); 1715 (\$5.N) - 9/21/15	2,815,638	30	30.75	468,584	4,735,629	97,118	924,334	1,048,752	300	450	1,860,438	25	31	499,201	1,628,350	82,200	6,648,092	235	267	790,427	653,528	0			83,983,690	3.12
10/3/2015	67,048,415	0	3,034,763	31.5	32.25	502,043	4,925,789	100,522	919,217	1,347,552	600	725	2,053,673	39	47	539,290	1,662,320	88,291	8,036,576	301	40	884,785	616,594	0		725,376	92,485,206	3.43
10/10/2015	66,049,706	1722 (\$1.N); 1723 (\$5.N); 1711 (\$20.N) - 10/05/15	2,175,801	5	5.25	366,506	4,803,855	97,005	899,614	1,141,865	925	200	2,113,720	55	65	535,411	1,636,542	86,150	2,572,748	50	60	372,480	593,616	0		743,664	84,188,683	3.12
10/17/2015	65,073,593	0	2,133,286	5	5	358,076	4,629,752	92,453	876,040	824,622	200	225	2,286,703	75	84	568,477	1,576,323	79,576	2,638,956	70	80	377,157	580,870	0		754,124	82,850,007	3.07
10/24/2015	64,087,437	1724 (\$2.N); 1768 (\$5.N); 1726 (\$10.N) - 10/19/15	2,099,176	5.25	5.5	358,217	4,515,381	92,071	860,960	991,931	300	425	2,600,946	93	105	626,019	1,553,788	80,225	2,946,077	90	100	411,192	562,378	0		752,104	82,537,901	3.06
10/31/2015	66,025,374	0	2,165,101	5.75	6	368,559	4,653,961	91,360	873,751	944,275	550	200	2,945,749	117	129	695,705	1,621,009	85,560	3,327,954	110	127	455,266	573,258	0		766,642	85,593,524	3.18
11/7/2015	68,137,192	1727 (\$1.N); 1728 (\$2.N); 1729 (\$5.N) - 11/02/15	2,232,267	6.25	6.5	379,508	4,977,693	96,887	891,111	911,796	225	300	3,416,380	144	164	795,028	1,688,298	86,418	3,071,581	142	40	425,312	599,980	0		826,093	88,535,543	3.28
11/14/2015	65,449,428	0	2,185,621	6.75	7	373,102	4,726,211	93,030	870,215	1,087,101	425	575	4,139,462	180	200	938,757	1,614,727	82,536	2,437,413	50	60	357,760	574,596	0		688,852	85,618,810	3.18
11/21/2015	68,364,421	1730 (\$2.N); 1783 (\$2.N); 1731 (\$5.N) - 11/16/15 1778 (\$2.N) - 11/18/15	2,173,857	7.25	7.5	369,519	4,674,293	88,988	862,630	825,054	200	225	1,830,909	15	20	489,485	1,632,096	82,077	2,553,907	70	80	370,594	586,348	0		634,850	85,539,027	3.17
11/28/2015	61,091,628	0	2,113,171	7.75	8.25	364,947	4,523,108	87,438	825,047	904,825	300	400	1,785,419	25	31	478,828	1,591,416	82,363	2,886,666	90	100	406,251	546,614	0		572,902	78,260,621	2.90
12/5/2015	67,830,827	1733 (\$5.N) - 12/5/15	2,245,481	8.75	9.5	385,346	5,020,926	94,445	898,598	957,116	525	200	2,073,099	39	47	545,451	1,789,318	94,198	3,432,248	110	127	467,917	603,222	0		645,054	87,083,245	3.23
12/12/2015	68,324,452	1751 (\$1.N); 1780 (\$2.N); 1784 (\$5.N) - 12/07/15	2,281,004	10.25	10.75	391,281	4,980,397	94,549	877,611	815,777	225	200	2,160,601	57	66	555,974	1,746,314	86,684	3,835,044	145	164	508,111	592,212	0		603,850	87,853,860	3.26
weekly change	0.7%		1.6%			1.5%	-0.8%	0.1%	-2.3%	-14.8%		4.2%			1.9%	-2.4%	-8.0%	11.7%		8.6%		-1.8%	0.0%			-6.4%	0.9%	
SALES	SALES	SALES	SALES	SALES	SALES	SALES	SALES	SALES	SALES	SALES	SALES	SALES	SALES	SALES	SALES	SALES	SALES	SALES	SALES	SALES	SALES	SALES	SALES	SALES	SALES	SALES	SALES	% of Sales
Calendar Year to date	3,331,884,807		118,443,036			19,504,947	239,402,341	5,029,250	46,782,029	51,764,763	130,351,815		31,970,247	82,857,704	4,538,361	201,234,053		25,754,465	33,634,678				(390)			7,713,511	4,330,865,616	100.0%
Fiscal Year to date 2016	963,845,070		35,787,417			6,042,082	71,221,868	1,421,995	13,170,696	14,843,231	35,640,581		8,914,829	24,456,072	1,261,288	56,559,244		7,414,127	8,919,400				0			7,713,511	1,257,211,210	100.0%
*Full week includes 2 days from FY15																												