



WEEKLY SALES SUMMARY

Unaudited

Week Ending: 12/13/08

Texas Lottery Commission
Fiscal Year to Date Sales Comparison
Unaudited

Through the week ending 12/13/2008 (15 weeks)

Sales by Game	FY 2007 *	FY 2008 **	FY 2009	\$ Change		% Change	
				FY 2009 to FY 2007	FY 2009 to FY 2008	FY 2009 to FY 2007	FY 2009 to FY 2008
Instants	\$ 803,157,731	\$ 793,073,159	\$ 755,492,373	\$ -47,665,358	\$ -37,580,786	-5.9%	-4.7%
Lotto Texas	58,656,495	62,786,029	51,271,500	-7,384,995	-11,514,529	-12.6%	-18.3%
Pick 3	89,758,280	81,771,102	78,190,306	-11,567,974	-3,580,797	-12.9%	-4.4%
Pick 3 Sum It Up	-	1,041,602	1,663,934	1,663,934	622,332	-	-
Cash 5	25,514,585	22,513,185	20,075,545	-5,439,040	-2,437,640	-21.3%	-10.8%
Texas Two Step	17,360,116	12,211,056	12,924,568	-4,435,548	713,512	-25.6%	5.8%
Mega Millions	40,511,155	41,822,174	50,584,482	10,073,327	8,762,308	24.9%	21.0%
Megaplier	10,027,687	10,489,950	11,855,982	1,828,295	1,366,032	18.2%	13.0%
Daily 4	-	11,591,547	11,833,155	11,833,155	241,608	-	2.1%
Daily 4 Sum It Up	-	3,218,191	1,541,828	1,541,828	-1,676,364	-	-52.1%
Total	\$ 1,044,986,049	\$ 1,040,517,995	\$ 995,433,671	\$ -49,552,378	\$ -45,084,324	-4.7%	-4.3%

* 3 extra days in 2007 ** 2 extra days in 2008

Texas Lottery Commission
Fiscal Year Over Year Change in Sales
Unaudited
FY 2009 Compared to FY 2008

Week	FY 2009 Week Ending	INSTANT TICKETS				ON-LINE GAMES				TOTAL SALES			
		FY 2009	FY 2008	Difference	% change - Cumulative Sales	FY 2009	FY 2008	Difference	% change - Cumulative Sales	FY 2009	FY 2008	Difference	% change - Cumulative Sales
1	9/6/2008**	\$44,890,104	\$62,376,229	(\$17,486,125)	-28.0%	\$14,722,011	\$19,372,224	(\$4,650,213)	-24.0%	\$59,612,115	\$81,748,453	(\$22,136,338)	-27.1%
2	9/13/2008	\$46,309,551	\$52,458,866	(\$6,149,315)	-20.6%	\$13,704,860	\$16,926,163	(\$3,221,303)	-21.7%	\$60,014,411	\$69,385,029	(\$9,370,618)	-20.8%
3	9/20/2008	\$42,923,171	\$49,998,934	(\$7,075,763)	-18.6%	\$12,291,263	\$15,792,283	(\$3,501,020)	-21.8%	\$55,214,434	\$65,791,217	(\$10,576,783)	-19.4%
4	9/27/2008	\$47,042,801	\$49,894,175	(\$2,851,374)	-15.6%	\$14,222,339	\$14,800,514	(\$578,175)	-17.9%	\$61,265,140	\$64,694,689	(\$3,429,549)	-16.2%
5	10/4/2008	\$50,747,162	\$53,486,863	(\$2,739,701)	-13.5%	\$15,784,472	\$16,618,430	(\$833,958)	-15.3%	\$66,531,634	\$70,105,293	(\$3,573,659)	-14.0%
6	10/11/2008	\$49,763,789	\$50,918,020	(\$1,154,231)	-11.7%	\$15,622,498	\$15,601,410	\$21,088	-12.9%	\$65,386,287	\$66,519,430	(\$1,133,143)	-12.0%
7	10/18/2008	\$49,299,053	\$50,532,253	(\$1,233,200)	-10.5%	\$15,167,940	\$15,682,666	(\$514,726)	-11.6%	\$64,466,993	\$66,214,919	(\$1,747,926)	-10.7%
8	10/25/2008	\$49,977,581	\$50,347,450	(\$369,869)	-9.3%	\$14,525,843	\$15,586,516	(\$1,060,673)	-11.0%	\$64,503,424	\$65,933,966	(\$1,430,542)	-9.7%
9	11/1/2008	\$50,346,542	\$53,953,733	(\$3,607,191)	-9.0%	\$14,838,845	\$16,775,983	(\$1,937,139)	-11.1%	\$65,185,387	\$70,729,716	(\$5,544,330)	-9.5%
10	11/8/2008	\$54,860,087	\$53,635,090	\$1,224,997	-7.9%	\$16,057,069	\$15,912,791	\$144,278	-9.9%	\$70,917,156	\$69,547,881	\$1,369,275	-8.3%
11	11/15/2008	\$53,484,812	\$51,254,401	\$2,230,411	-6.8%	\$15,829,819	\$15,797,076	\$32,744	-9.0%	\$69,314,631	\$67,051,477	\$2,263,155	-7.3%
12	11/22/2008	\$52,806,511	\$50,897,817	\$1,908,694	-5.9%	\$16,460,748	\$15,801,720	\$659,028	-7.9%	\$69,267,259	\$66,699,537	\$2,567,722	-6.4%
13	11/29/2008	\$52,199,741	\$53,913,115	(\$1,713,374)	-5.7%	\$17,397,576	\$17,055,505	\$342,072	-7.1%	\$69,597,317	\$70,968,620	(\$1,371,303)	-6.0%
14	12/6/2008	\$56,731,851	\$55,702,697	\$1,029,154	-5.1%	\$20,363,789	\$17,900,717	\$2,463,073	-5.5%	\$77,095,640	\$73,603,414	\$3,492,227	-5.2%
15	12/13/2008	\$54,109,617	\$53,703,516	\$406,101	-4.7%	\$22,952,228	\$17,820,841	\$5,131,387	-3.0%	\$77,061,845	\$71,524,357	\$5,537,488	-4.3%
16	12/20/2008		\$57,592,769				\$17,436,233				\$75,029,002		
17	12/27/2008		\$57,696,003				\$14,743,680				\$72,439,683		
18	1/3/2009		\$57,935,952				\$15,704,450				\$73,640,402		
19	1/10/2009		\$55,360,542				\$15,691,540				\$71,052,082		
20	1/17/2009		\$54,920,166				\$16,259,669				\$71,179,835		
21	1/24/2009		\$54,439,890				\$16,691,724				\$71,131,614		
22	1/31/2009		\$57,464,382				\$17,968,227				\$75,432,609		
23	2/7/2009		\$60,715,019				\$20,097,338				\$80,812,357		
24	2/14/2009		\$57,093,143				\$22,179,908				\$79,273,051		
25	2/21/2009		\$57,627,047				\$27,230,539				\$84,857,586		
26	2/28/2009		\$55,591,667				\$17,016,118				\$72,607,785		
27	3/7/2009		\$56,837,481				\$16,690,193				\$73,527,674		
28	3/14/2009		\$54,587,112				\$16,448,165				\$71,035,277		
29	3/21/2009		\$53,098,937				\$16,639,184				\$69,738,121		
30	3/28/2009		\$53,933,689				\$17,698,625				\$71,632,314		
31	4/4/2009		\$57,598,982				\$17,665,411				\$75,264,393		
32	4/11/2009		\$53,954,185				\$15,860,784				\$69,814,969		
33	4/18/2009		\$53,946,736				\$16,452,676				\$70,399,412		
34	4/25/2009		\$51,533,006				\$16,873,949				\$68,406,955		
35	5/2/2009		\$53,250,568				\$18,202,103				\$71,452,671		
36	5/9/2009		\$54,060,849				\$18,422,562				\$72,483,411		
37	5/16/2009		\$54,010,641				\$20,728,360				\$74,739,001		
38	5/23/2009		\$50,377,032				\$15,461,384				\$65,838,416		
39	5/30/2009		\$49,545,080				\$15,175,370				\$64,720,450		
40	6/6/2009		\$53,702,986				\$15,982,166				\$69,685,152		

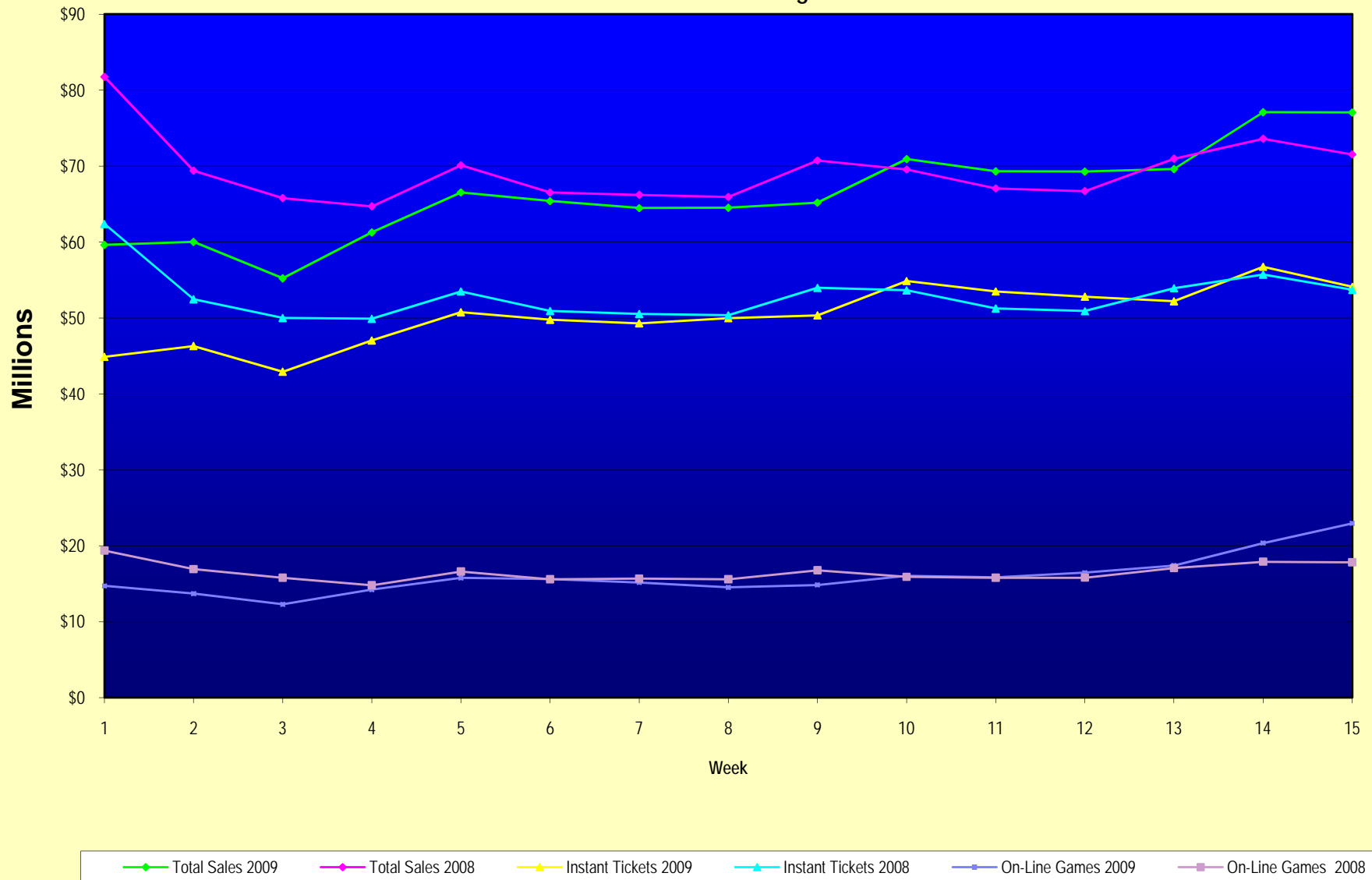
Note: Week 1 is not a full week of sales as this report is prepared on a Fiscal Year basis.

Texas Lottery Commission
Fiscal Year Over Year Change in Sales
Unaudited
FY 2009 Compared to FY 2008

Week	FY 2009 Week Ending	INSTANT TICKETS				ON-LINE GAMES				TOTAL SALES			
		FY 2009	FY 2008	Difference	% change - Cumulative Sales	FY 2009	FY 2008	Difference	% change - Cumulative Sales	FY 2009	FY 2008	Difference	% change - Cumulative Sales
41	6/13/2009		\$51,171,483				\$16,589,087				\$67,760,570		
42	6/20/2009		\$50,650,362				\$15,728,484				\$66,378,846		
43	6/27/2009		\$49,258,266				\$15,250,905				\$64,509,171		
44	7/4/2009		\$53,393,355				\$16,270,619				\$69,663,974		
45	7/11/2009		\$53,127,756				\$16,914,922				\$70,042,678		
46	7/18/2009		\$51,593,146				\$17,752,738				\$69,345,884		
47	7/25/2009		\$49,902,181				\$16,706,145				\$66,608,326		
48	8/1/2009		\$49,605,420				\$16,254,383				\$65,859,803		
49	8/8/2009		\$50,961,907				\$16,770,496				\$67,732,403		
50	8/15/2009		\$49,452,511				\$16,749,487				\$66,201,998		
51	8/22/2009		\$49,249,518				\$17,286,302				\$66,535,820		
52	8/29/2009		\$49,468,928				\$18,109,997				\$67,578,925		
53	9/5/2009		\$6,054,239				\$493,109				\$6,547,348		
Total thru Current Week		\$755,492,373	\$793,073,159	(\$37,580,786)	-4.7%	\$239,941,298	\$247,444,836	(\$7,503,538)	-3.0%	\$995,433,671	\$1,040,517,995	(\$45,084,324)	-4.3%
Fiscal Year Total		\$755,492,373	\$2,783,836,095			\$239,941,298	\$887,641,858			\$995,433,671	\$3,671,477,953		

** FY 2009 includes 6 days; FY 2008 includes 8 days
FY 2009 average daily sales are \$9,242,258. Two days at average daily sales are \$18,484,516.

Texas Lottery Commission Fiscal Year Over Year Change in Sales



Note: Week 1 is not a full week of sales as this report is prepared on a Fiscal Year basis.

Texas Lottery Commission
Instant Tickets by Price Point
Sales, Prize Expense, Sales Contribution and Payout Percentage With Year Over Year Changes
Unaudited

Fiscal Year	Price Point	# of Active Games	FY Sales	% of Instant Ticket Sales	Year over Year Change in Sales	FY Prize Expense	Year over Year Change in Prize Expense	FY Sales Contribution	Year over Year Change in Contribution	Average Prize Payout %	Year over Year Change in Payout %
2008	\$1.00	37	69,026,344	8.7%		41,483,423		27,542,921		60.1%	
thru	\$2.00	41	134,057,956	16.9%		87,155,055		46,902,901		65.0%	
12/15/2007	\$3.00	11	60,813,066	7.7%		40,097,874		20,715,192		65.9%	
	\$5.00	33	210,170,955	26.5%		142,500,222		67,670,733		67.8%	
	\$7.00	10	57,808,387	7.3%		39,304,081		18,504,306		68.0%	
	\$10.00	15	121,301,216	15.3%		84,920,833		36,380,383		70.0%	
	\$20.00	6	48,626,400	6.1%		34,967,360		13,659,040		71.9%	
	\$25.00	2	33,736,275	4.3%		24,492,930		9,243,345		72.6%	
	\$30.00	2	9,695,760	1.2%		7,009,390		2,686,370		72.3%	
	\$50.00	2	47,836,800	6.0%		34,507,947		13,328,853		72.1%	
Total		159	\$793,073,159			\$536,439,115		\$256,634,044		67.6%	
2009	\$1.00	34	64,161,992	8.5%		38,654,982		25,507,010		60.2%	0.1%
thru	\$2.00	28	130,329,450	17.3%		84,517,517		45,811,933		64.8%	-0.2%
12/13/2008	\$3.00	13	83,709,615	11.1%		55,033,204		28,676,411		65.7%	-0.2%
	\$5.00	31	228,935,009	30.3%		155,710,687		73,224,322		68.0%	0.2%
	\$7.00	6	32,575,557	4.3%		22,158,556		10,417,001		68.0%	0.0%
	\$10.00	13	100,659,060	13.3%		70,449,263		30,209,797		70.0%	0.0%
	\$20.00	7	73,672,700	9.8%		52,877,357		20,795,343		71.8%	-0.1%
	\$25.00	1	2,377,900	0.3%		1,729,556		648,344		72.7%	0.1%
	\$30.00	3	6,914,640	0.9%		5,011,454		1,903,186		72.5%	0.2%
	\$50.00	3	32,156,450	4.3%		23,252,931		8,903,519		72.3%	0.2%
Total		139	\$755,492,373			\$509,395,508		\$246,096,865		67.4%	-0.2%
Variance	\$1.00	-3	-4,864,352		-7.0%	-2,828,440	-6.8%	-2,035,912	-7.4%	0.15%	
2009 to	\$2.00	-13	-3,728,506		-2.8%	-2,637,538	-3.0%	-1,090,968	-2.3%	-0.16%	
2008	\$3.00	2	22,896,549		37.7%	14,935,330	37.2%	7,961,219	38.4%	-0.19%	
	\$5.00	-2	18,764,054		8.9%	13,210,465	9.3%	5,553,589	8.2%	0.21%	
	\$7.00	-4	-25,232,830		-43.6%	-17,145,526	-43.6%	-8,087,304	-43.7%	0.03%	
	\$10.00	-2	-20,642,156		-17.0%	-14,471,570	-17.0%	-6,170,586	-17.0%	-0.02%	
	\$20.00	1	25,046,300		51.5%	17,909,997	51.2%	7,136,303	52.2%	-0.14%	
	\$25.00	-1	-31,358,375		-93.0%	-22,763,374	-92.9%	-8,595,001	-93.0%	0.13%	
	\$30.00	1	-2,781,120		-28.7%	-1,997,936	-28.5%	-783,184	-29.2%	0.18%	
	\$50.00	1	-15,680,350		-32.8%	-11,255,016	-32.6%	-4,425,334	-33.2%	0.18%	
Total		-20	-\$37,580,786		-4.7%	-\$27,043,607	-5.0%	-\$10,537,179	-4.1%	-0.21%	

Texas Lottery Commission
Instant Tickets by Price Point
Sales, Prize Expense, Sales Contribution and Payout Percentage With Year Over Year Changes
Unaudited

Notes - Instant Ticket Variances

		FY 2009		FY 2008		Difference
Sales	\$1 - \$7	\$539,711,623		\$531,876,708		\$7,834,915
Prize Exp.	\$1 - \$7	\$356,074,946		\$350,540,654		\$5,534,292
Sales Cont.	\$1 - \$7	\$183,636,677		\$181,336,054		\$2,300,623
Prize Exp. %	\$1 - \$7	66.0%		65.9%		0.1%
		FY 2009		FY 2008		Difference
Sales	\$10 - \$50	\$215,780,750		\$261,196,451		-\$45,415,701
Prize Exp.	\$10 - \$50	\$153,320,562		\$185,898,461		-\$32,577,899
Sales Cont.	\$10 - \$50	\$62,460,188		\$75,297,990		-\$12,837,802
Prize Exp. %	\$10 - \$50	71.1%		71.2%		-0.1%
		FY 2009		FY 2008		Difference
Sales	Instant	\$755,492,373		\$793,073,159		-\$37,580,786
Prize Exp.	Instant	\$509,395,508		\$536,439,115		-\$27,043,607
Sales Cont.	Instant	\$246,096,865		\$256,634,044		-\$10,537,179
Prize Exp. %	Instant	67.4%		67.6%		-0.2%

		FY 2009		FY 2008		Difference
Sales	\$1 - \$10	\$640,370,683		\$653,177,924		-\$12,807,241
Prize Exp.	\$1 - \$10	\$426,524,209		\$435,461,487		-\$8,937,278
Sales Cont.	\$1 - \$10	\$213,846,474		\$217,716,437		-\$3,869,963
Prize Exp. %	\$1 - \$10	66.6%		66.7%		-0.1%
		FY 2009		FY 2008		Difference
Sales	\$20 - \$50	\$115,121,690		\$139,895,235		-\$24,773,545
Prize Exp.	\$20 - \$50	\$82,871,299		\$100,977,628		-\$18,106,329
Sales Cont.	\$20 - \$50	\$32,250,391		\$38,917,607		-\$6,667,216
Prize Exp. %	\$20 - \$50	72.0%		72.2%		-0.2%
		FY 2009		FY 2008		Difference
Sales	Instant	\$755,492,373		\$793,073,159		-\$37,580,786
Prize Exp.	Instant	\$509,395,508		\$536,439,115		-\$27,043,607
Sales Cont.	Instant	\$246,096,865		\$256,634,044		-\$10,537,179
Prize Exp. %	Instant	67.4%		67.6%		-0.2%

Texas Lottery Commission
Weekly Sales Summary
& Comparison to Previous Week
 Unaudited

	Week Ending 12/13/08		Week Ending 12/06/08			
	<u>THIS WEEK</u>	% of Sales	<u>LAST WEEK</u>	% of Sales	<u>\$ change</u>	<u>% change</u>
Total Sales	<u>\$77,061,845</u>		<u>\$77,095,640</u>		<u>-\$33,796</u>	-0.04%
Instant Tickets	<u>\$54,109,617</u>	70.2%	<u>\$56,731,851</u>	73.6%	<u>-\$2,622,234</u>	-4.62%
Lotto Texas	\$3,315,658	4.3%	\$3,794,991	4.9%	-\$479,333	-12.63%
Pick 3	\$5,580,770	7.2%	\$5,752,593	7.5%	-\$171,823	-2.99%
Pick 3 Sum It Up	\$114,296	0.1%	\$121,664	0.2%	-\$7,368	-6.06%
Cash 5	\$1,384,858	1.8%	\$1,416,446	1.8%	-\$31,588	-2.23%
Texas Two Step	\$766,893	1.0%	\$780,328	1.0%	-\$13,435	-1.72%
Mega Millions	\$9,150,536	11.9%	\$6,238,355	8.1%	\$2,912,181	46.68%
Megaplier	\$1,691,121	2.2%	\$1,270,214	1.6%	\$420,907	33.14%
Daily 4	\$846,177	1.1%	\$881,842	1.1%	-\$35,665	-4.04%
Daily 4 Sum It Up	<u>\$101,920</u>	0.1%	<u>\$107,357</u>	0.1%	<u>-\$5,438</u>	-5.06%
Total Online Sales	<u>\$22,952,228</u>		<u>\$20,363,789</u>		<u>\$2,588,439</u>	12.71%

* Totals may not sum due to rounding.

Texas Lottery Commission
Weekly Sales Summary
Unaudited

INSTANT TICKETS
TOP TEN SELLING GAMES

For the Week Ending : 12/13/08

Rank	Price Point	Game	Sales (Millions)
1	\$ 10	JINGLE JUMBO BUCKS	\$ 4.359
2	\$ 5	HOLIDAY TREASURES	\$ 4.189
3	\$ 5	MERRY MONEY	\$ 2.777
4	\$ 20	TEXAS \$50 MILLION CLUB	\$ 2.494
5	\$ 5	FANTASTIC 5'S	\$ 2.411
6	\$ 7	SIZZLIN' RED 7'S	\$ 2.234
7	\$ 10	SET FOR LIFE	\$ 1.865
8	\$ 3	BONUS CASHWORD	\$ 1.727
9	\$ 50	\$130,000,000 PLATINUM PAYOUT	\$ 1.680
10	\$ 2	BREAK THE BANK	\$ 1.645

Texas Lottery Commission
Prize Payout Tracking Report
Unaudited

Through Week Ending 12/13/08

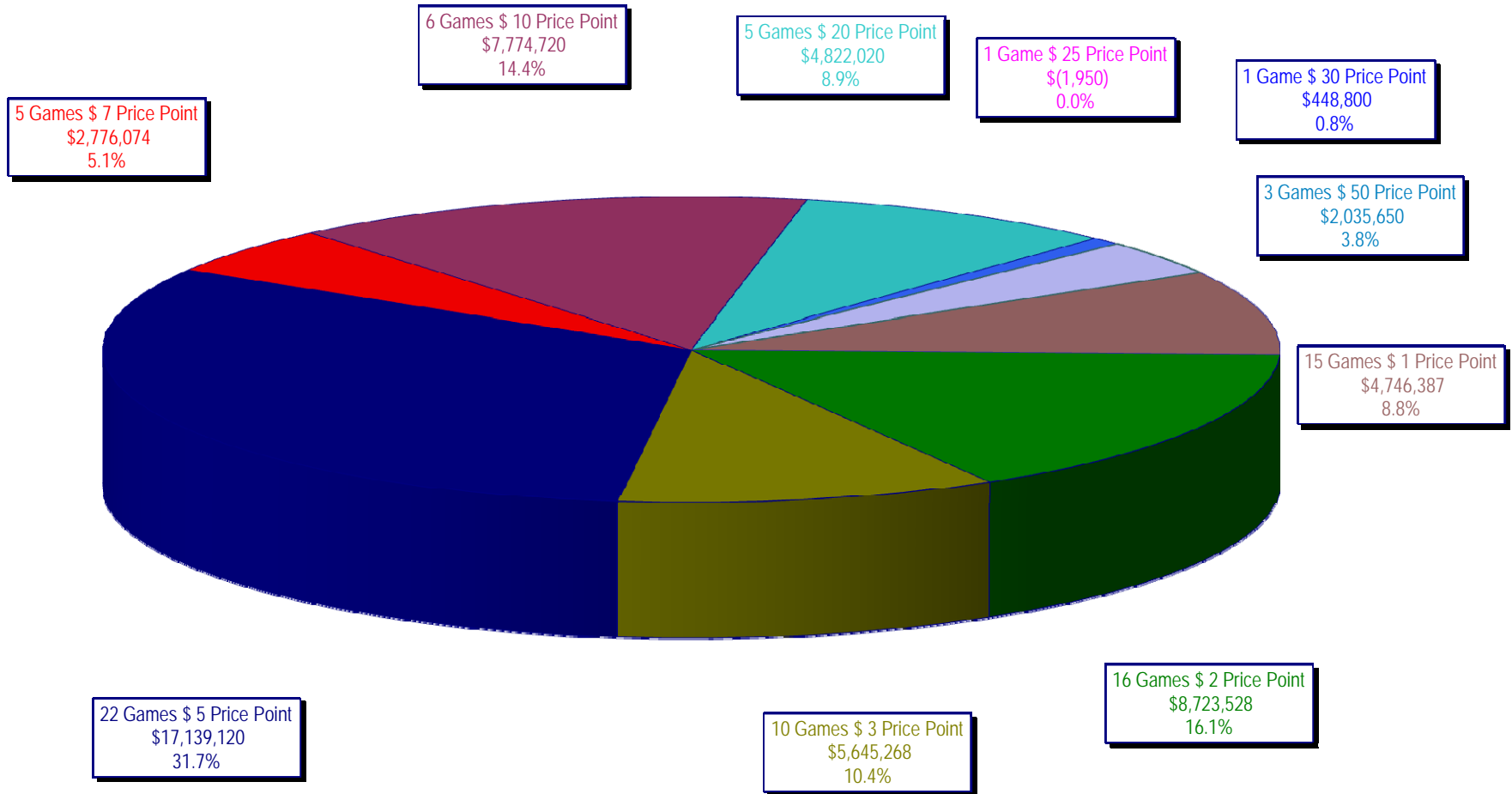
On-Line Sales

		FY Sales Through Week Ending 12/13/2008		FY Prize Expense Through Week Ending 12/13/2008	Actual* Prize Payout	Base Payout (Prize Pool)
Lotto	\$	51,271,500	\$	25,731,378	50.19%	50.00%
Pick 3		78,190,306		37,272,220	47.67%	50.00%
Pick 3 Sum It Up		1,663,934		737,809	44.34%	50.00%
Cash 5		20,075,545		10,135,184	50.49%	50.00%
Texas Two-Step		12,924,568		6,813,800	52.72%	50.00%
Mega Millions		50,584,482		22,907,069	45.28%	50.00%**
Megaplier		11,855,982		4,583,979	38.66%	N/A
Daily 4		11,833,155		5,258,700	44.44%	50.00%
Daily 4-Sum It Up		1,541,828		572,736	37.15%	50.00%
Totals	\$	239,941,298	\$	114,012,875	47.52%	

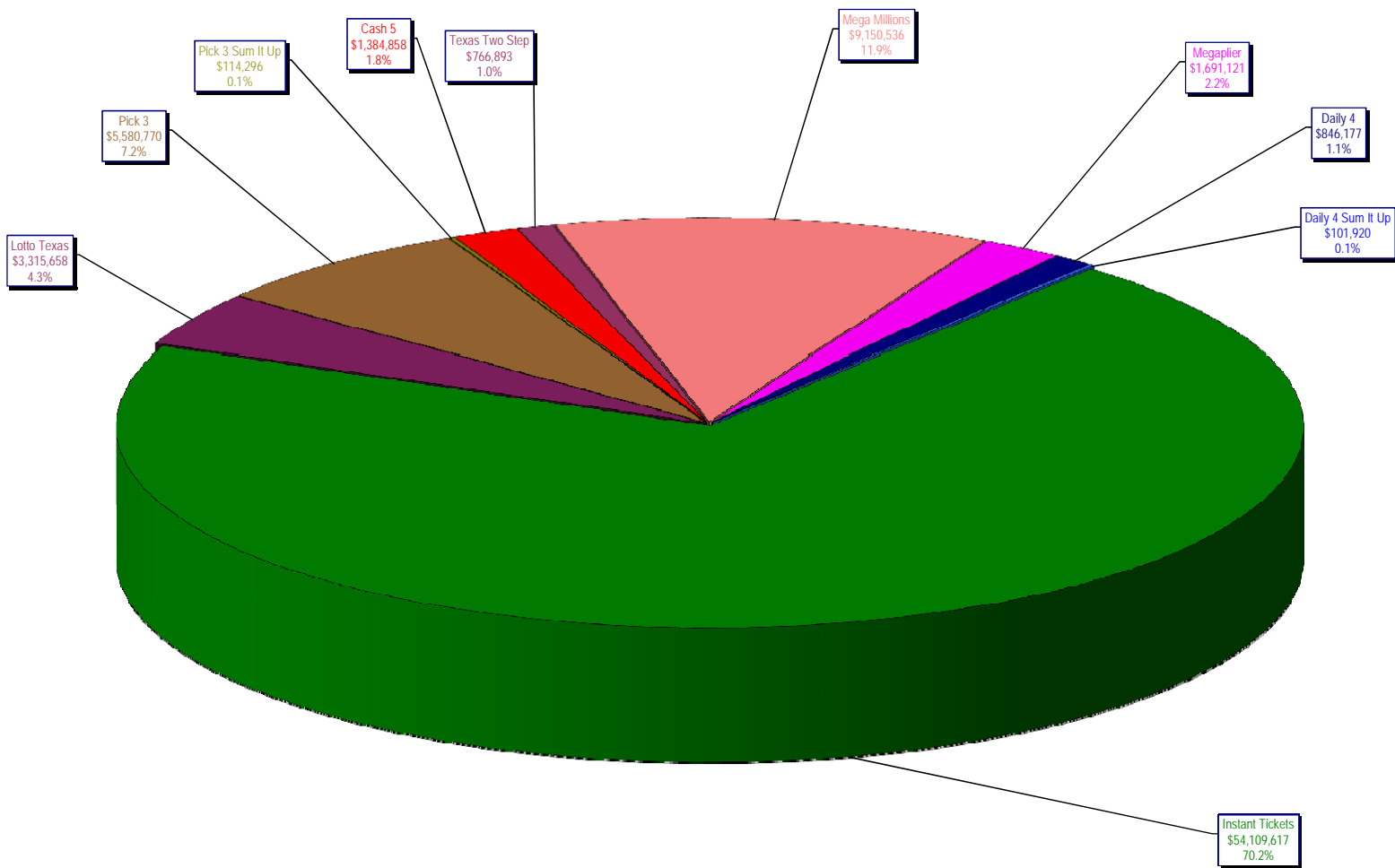
* Before Unclaimed Prizes

** Estimated; depends on # of guaranteed prizes won in Texas

Texas Lottery Commission
Instant Ticket Sales
For the Week Ending 12/13/2008
(Unaudited)



Texas Lottery Commission
All Game Sales
For the Week Ending 12/13/2008
(Unaudited)



* Totals may not sum due to rounding.

Texas Lottery Commission - Weekly Sales Summary for FY 2008 (Unaudited)

Week Ended	Instant Games	New Games & Dates	Lotto Texas	Jackpot W	S	Pick 3	Pick 3 Sum It Up	Cash 5	Texas Two Step	Jackpot M/T	TH/F	Mega Millions	Jackpot T	F	Megaplier	Daily 4	Daily 4 Sum It Up	Total	Per Cap.
9/6/2008	50,944,343.00	1108 (\$2,N), 1088 (\$3, N) - 9/01/08	3,378,718.00	5	6	5,436,414.00	122,123.00	1,396,622.00	890,346.00	350	450	2,445,490.00	12	16	649,090.00	786,482.50	109,834.00	66,159,462.50	2.77
9/13/2008	46,309,551.00	1109 (\$1,N), 1098 (\$5, N) - 9/08/08	3,020,089.00	7	8	4,705,585.50	105,899.00	1,279,412.00	856,199.00	600	200	2,327,214.00	24	12	617,672.00	696,633.00	96,156.50	60,014,411.00	2.51
9/20/2008	42,923,171.00	0	3,054,093.00	9	10	4,121,734.50	90,718.00	1,155,350.00	637,792.00	225	250	1,978,127.00	15	12	540,225.00	627,210.00	86,013.50	55,214,434.00	2.31
9/27/2008	47,042,801.00	1111 (\$2,N), 1099 (\$5, N) - 9/22/08	3,427,671.00	11	12	4,821,563.00	103,189.50	1,288,062.00	834,307.00	275	425	2,322,862.00	16	24	617,085.00	709,741.50	97,858.00	61,265,140.00	2.56
10/4/2008	50,747,162.00	1113 (\$1,N) 9/29/08	3,675,683.00	13	14	5,305,711.00	116,332.50	1,369,040.00	1,074,874.00	525	650	2,671,927.00	32	42	693,845.00	770,782.50	106,277.00	66,531,634.00	2.78
10/11/2008	49,763,789.00	0	3,732,365.00	15	16	5,287,094.00	114,665.50	1,370,334.00	1,305,250.00	800	975	2,306,070.00	12	16	622,120.00	778,204.00	106,395.00	65,386,286.50	2.74
10/18/2008	49,299,053.00	1117 (\$3,N), 1118 (\$20,N) - 10/13/08	3,780,438.00	17	18	5,149,258.00	109,530.00	1,355,601.00	741,849.00	200	200	2,500,644.00	23	32	652,198.00	776,366.00	102,056.00	64,466,993.00	2.70
10/25/2008	49,977,581.00	1119 (\$1,N), 1120 (\$5,N) - 10/20/08	3,210,762.00	4	5	5,099,671.00	107,104.50	1,339,079.00	789,649.00	225	275	2,456,965.00	42	12	641,206.00	778,434.00	102,972.50	64,503,424.00	2.70
11/1/2008	50,346,542.00	1121 (\$2,N), 1122 (\$10,N) - 10/27/08	3,325,641.00	6	7	5,234,124.00	109,983.00	1,339,046.00	946,035.00	375	475	2,347,596.00	16	23	626,235.00	805,572.00	104,612.50	65,185,386.50	2.73
11/8/2008	54,860,087.00	1123 (\$3,N), 1124 (\$7,N) - 11/03/08; 1109 (\$3,N) - 11/05/08; 1063 (\$3,N) - 11/07/08	3,290,417.00	4	5	5,686,701.00	118,495.00	1,397,985.00	1,158,101.00	625	750	2,729,302.50	31	42	692,662.00	871,230.00	112,175.50	70,917,156.00	2.97
11/15/2008	53,484,812.00	1125 (\$1, N), 1126 (\$5,N) - 11/10/08	3,336,934.00	6	7	5,459,984.00	112,884.00	1,366,024.00	766,955.00	200	225	3,102,251.00	51	62	749,736.00	830,957.00	104,094.00	69,314,631.00	2.90
11/22/2008	52,806,511.00	0	3,452,481.00	8	9	5,329,591.00	108,861.50	1,358,271.00	743,950.00	200	200	3,666,517.00	73	86	847,201.00	849,077.50	104,797.50	69,267,258.50	2.90
11/29/2008	52,199,741.00	1127 (\$2,N), 1128 (\$5,N) - 11/24/08	3,585,374.00	10	11	5,340,783.50	111,443.00	1,315,233.00	686,077.00	200	225	4,441,715.00	96	111	968,906.00	845,475.50	102,569.00	69,597,317.00	2.91
12/6/2008	56,731,851.00	0	3,794,991.00	12	13	5,752,593.00	121,663.50	1,416,446.00	780,328.00	250	200	6,238,355.00	128	146	1,270,214.00	881,841.50	107,357.00	77,095,640.00	3.23
12/13/2008	54,109,617.00	1129 (\$1, N) - 12/08/08	3,315,658.00	4	5	5,580,770.00	114,295.50	1,384,858.00	766,893.00	225	250	9,150,536.00	170	207	1,691,121.00	846,176.50	101,919.50	77,061,844.50	3.22
weekly change	-4.62%		-12.63%			-2.99%	-6.06%	-2.23%	-1.72%			46.68%			33.14%	-4.04%	-5.06%	-0.04%	
	SALES		SALES			SALES	SALES	SALES	SALES			SALES			SALES	SALES	SALES	SALES	% of Sales
Startup to date	34,236,078,375.00		10,330,368,547.00			3,376,909,258.00	8,149,763.50	2,139,231,555.00	439,190,286.00			976,723,076.50			230,064,016.00	54,050,126.00	9,880,631.00	52,008,779,606.00	100.0%
Calendar Year to date	2,614,872,773.00		185,454,085.00			271,448,507.50	6,736,160.50	70,106,024.00	46,788,446.00			176,203,777.50			41,115,363.00	40,674,710.50	6,299,341.50	3,459,699,188.50	100.0%
Fiscal Year to date 2009	755,492,373.00		51,271,500.00			78,190,305.50	1,663,933.50	20,075,545.00	12,924,568.00			50,584,481.50			11,855,982.00	11,833,154.50	1,541,827.50	995,433,670.50	100.0%