



WEEKLY SALES SUMMARY

Unaudited

[Week Ending: 12/13/2014](#)

Texas Lottery Commission
Fiscal Year to Date Sales Comparison
Unaudited

Through the Week Ending 12/13/2014 (15 Weeks)

Sales by Game	FY 2013 *	FY 2014 **	FY 2015	\$ Change		% Change	
				FY 2015 to FY 2013	FY 2015 to FY 2014	FY 2015 to FY 2013	FY 2015 to FY 2014
Instants	\$ 874,492,895	\$ 899,738,230	\$ 932,824,349	\$ 58,331,454	\$ 33,086,119	6.7%	3.7%
Lotto Texas	46,960,678	38,225,458	34,279,301	-12,681,377	-3,946,157	-27.0%	-10.3%
Lotto Extra	-	4,891,214	5,172,178	5,172,178	280,964	-	5.7%
Pick 3	77,406,466	72,396,507	71,206,330	-6,200,136	-1,190,177	-8.0%	-1.6%
Pick 3 Sum It Up	1,455,517	1,431,590	1,361,770	-93,747	-69,820	-6.4%	-4.9%
Cash Five	16,573,526	15,148,678	14,194,888	-2,378,638	-953,790	-14.4%	-6.3%
Texas Two Step	16,419,366	15,722,451	16,244,941	-174,425	522,490	-1.1%	3.3%
Mega Millions	31,437,643	58,895,810	45,130,890	13,693,247	-13,764,920	43.6%	-23.4%
Megaplier	7,290,355	12,426,101	10,248,726	2,958,371	-2,177,375	40.6%	-17.5%
Daily 4	20,288,527	23,909,056	23,966,705	3,678,178	57,649	18.1%	0.2%
Daily 4 Sum It Up	1,369,493	1,473,494	1,439,192	69,699	-34,302	5.1%	-2.3%
Powerball	98,056,828	66,992,017	48,748,645	-49,308,183	-18,243,372	-50.3%	-27.2%
Power Play	9,388,498	7,811,698	6,389,196	-2,999,302	-1,422,502	-31.9%	-18.2%
All or Nothing	28,136,339	13,522,512	11,250,312	-16,886,027	-2,272,200	-60.0%	-16.8%
Monopoly	-	-	2,656,700	2,656,700	2,656,700	-	-
Total	\$ 1,229,276,130	\$ 1,232,584,815	\$ 1,225,114,123	\$ -4,162,007	\$ -7,470,692	-0.3%	-0.6%

* 2 extra days

** 1 extra day

1 Monopoly sales were suspended after draw on 12/12/14

Texas Lottery Commission
Fiscal Year to Date Cumulative Average Sales Comparison
Unaudited

Through the Week Ending 12/13/2014 (15 Weeks)

Sales by Game	FY 2013	FY 2014	FY 2015
Instant	\$ 8,249,933	\$ 8,568,936	\$ 8,969,465
Lotto Texas	443,025	364,052	329,609
Lotto Extra	-	46,583	49,732
Pick 3	730,250	689,491	684,676
Pick 3 Sum It Up	13,731	13,634	13,094
Cash Five	156,354	144,273	136,489
Texas Two Step	154,900	149,738	156,201
Mega Millions	296,582	560,912	433,951
Megaplier	68,777	118,344	98,545
Daily 4	191,401	227,705	230,449
Daily 4 Sum It Up	12,920	14,033	13,838
Powerball	925,064	638,019	468,737
Power Play	88,571	74,397	61,435
All or Nothing	* 287,106	128,786	108,176
Monopoly	-	- **	48,304
Total	\$ 11,618,613	\$ 11,738,903	\$ 11,802,702

	thru 12/15/2012	thru 12/14/2013	thru 12/13/2014
	106 days	105 days	104 days
*	98 days		** 55 days

Texas Lottery Commission
Fiscal Year Over Year Change in Sales
Unaudited
FY 2015 Compared to FY 2014

			INSTANT TICKETS				DRAW GAMES				TOTAL SALES			
Week	FY 2015		FY 2014	Difference	% change - Cumulative Sales	FY 2015	FY 2014	Difference	% change - Cumulative Sales	FY 2015	FY 2014	Difference	% change - Cumulative Sales	
	Ending	Week												
1	9/6/2014 *		\$54,911,801	\$58,587,757	(\$3,675,956)	-6.3%	\$17,482,488	\$22,369,499	(\$4,887,011)	-21.8%	\$72,394,289	\$80,957,256	(\$8,562,967)	-10.6%
2	9/13/2014		\$61,436,533	\$57,135,931	\$4,300,602	7.5%	\$19,097,081	\$25,412,980	(\$6,315,899)	-24.9%	\$80,533,614	\$82,548,911	(\$2,015,297)	-2.4%
3	9/20/2014		\$60,959,234	\$59,018,194	\$1,941,040	3.3%	\$20,567,894	\$29,161,241	(\$8,593,347)	-29.5%	\$81,527,128	\$88,179,435	(\$6,652,307)	-7.5%
4	9/27/2014		\$59,710,056	\$57,927,984	\$1,782,072	3.1%	\$19,920,828	\$20,012,313	(\$91,485)	-0.5%	\$79,630,884	\$77,940,297	\$1,690,588	2.2%
5	10/4/2014		\$62,119,854	\$62,146,816	(\$26,962)	0.0%	\$18,531,421	\$20,043,557	(\$1,512,136)	-7.5%	\$80,651,275	\$82,190,373	(\$1,539,098)	-1.9%
6	10/11/2014		\$61,253,665	\$60,867,582	\$386,083	0.6%	\$18,985,332	\$19,480,962	(\$495,631)	-2.5%	\$80,238,997	\$80,348,544	(\$109,548)	-0.1%
7	10/18/2014		\$60,230,048	\$60,612,193	(\$382,145)	-0.6%	\$19,538,402	\$20,079,610	(\$541,209)	-2.7%	\$79,768,450	\$80,691,803	(\$923,354)	-1.1%
8	10/25/2014		\$62,384,112	\$59,548,277	\$2,835,835	4.8%	\$21,475,643	\$19,319,928	\$2,155,715	11.2%	\$83,859,755	\$78,868,205	\$4,991,550	6.3%
9	11/1/2014		\$63,404,713	\$61,710,236	\$1,694,477	2.7%	\$23,568,817	\$18,308,976	\$5,259,842	28.7%	\$86,973,530	\$80,019,212	\$6,954,319	8.7%
10	11/8/2014		\$65,486,719	\$61,668,594	\$3,818,125	6.2%	\$23,749,032	\$19,555,070	\$4,193,963	21.4%	\$89,235,751	\$81,223,664	\$8,012,088	9.9%
11	11/15/2014		\$61,745,521	\$60,057,025	\$1,688,496	2.8%	\$17,449,604	\$20,930,071	(\$3,480,468)	-16.6%	\$79,195,125	\$80,987,096	(\$1,791,972)	-2.2%
12	11/22/2014		\$66,353,583	\$63,118,266	\$3,235,317	5.1%	\$17,108,084	\$19,086,770	(\$1,978,687)	-10.4%	\$83,461,667	\$82,205,036	\$1,256,631	1.5%
13	11/29/2014		\$60,471,184	\$57,145,294	\$3,325,890	5.8%	\$17,303,129	\$20,434,618	(\$3,131,489)	-15.3%	\$77,774,313	\$77,579,912	\$194,401	0.3%
14	12/6/2014		\$66,648,696	\$59,883,783	\$6,764,913	11.3%	\$18,862,425	\$22,791,842	(\$3,929,417)	-17.2%	\$85,511,121	\$82,675,625	\$2,835,496	3.4%
15	12/13/2014		\$65,708,630	\$60,310,298	\$5,398,332	9.0%	\$18,649,598	\$35,859,153	(\$17,209,555)	-48.0%	\$84,358,228	\$96,169,451	(\$11,811,223)	-12.3%
16	12/20/2014			\$65,088,999				\$46,832,745				\$111,921,744		
17	12/27/2014			\$67,721,619				\$18,218,091				\$85,939,710		
18	1/3/2015			\$67,162,991				\$19,140,745				\$86,303,736		
19	1/10/2015			\$65,049,914				\$17,954,333				\$83,004,247		
20	1/17/2015			\$62,731,830				\$18,900,213				\$81,632,043		
21	1/24/2015			\$59,085,886				\$19,558,830				\$78,644,716		
22	1/31/2015			\$64,099,096				\$20,764,006				\$84,863,102		
23	2/7/2015			\$67,717,353				\$22,433,672				\$90,151,025		
24	2/14/2015			\$69,949,998				\$25,572,367				\$95,522,365		
25	2/21/2015			\$72,422,148				\$31,832,665				\$104,254,813		
26	2/28/2015			\$72,883,830				\$21,827,140				\$94,710,970		
27	3/7/2015			\$73,726,744				\$22,528,352				\$96,255,096		
28	3/14/2015			\$71,026,808				\$25,171,358				\$96,198,166		
29	3/21/2015			\$69,174,125				\$25,837,564				\$95,011,689		
30	3/28/2015			\$66,886,917				\$18,604,870				\$85,491,787		
31	4/4/2015			\$71,218,020				\$19,883,667				\$91,101,687		
32	4/11/2015			\$65,970,648				\$18,875,485				\$84,846,133		
33	4/18/2015			\$64,922,280				\$19,723,048				\$84,645,328		
34	4/25/2015			\$60,578,829				\$18,978,148				\$79,556,977		
35	5/2/2015			\$64,244,545				\$19,029,632				\$83,274,177		
36	5/9/2015			\$65,679,029				\$19,350,478				\$85,029,507		
37	5/16/2015			\$63,627,971				\$19,865,609				\$83,493,580		
38	5/23/2015			\$61,902,451				\$19,892,846				\$81,795,297		
39	5/30/2015			\$61,264,953				\$20,014,636				\$81,279,589		
40	6/6/2015			\$64,019,948				\$21,782,886				\$85,802,834		
41	6/13/2015			\$59,742,598				\$19,736,748				\$79,479,346		
42	6/20/2015			\$59,010,863				\$17,095,336				\$76,106,199		

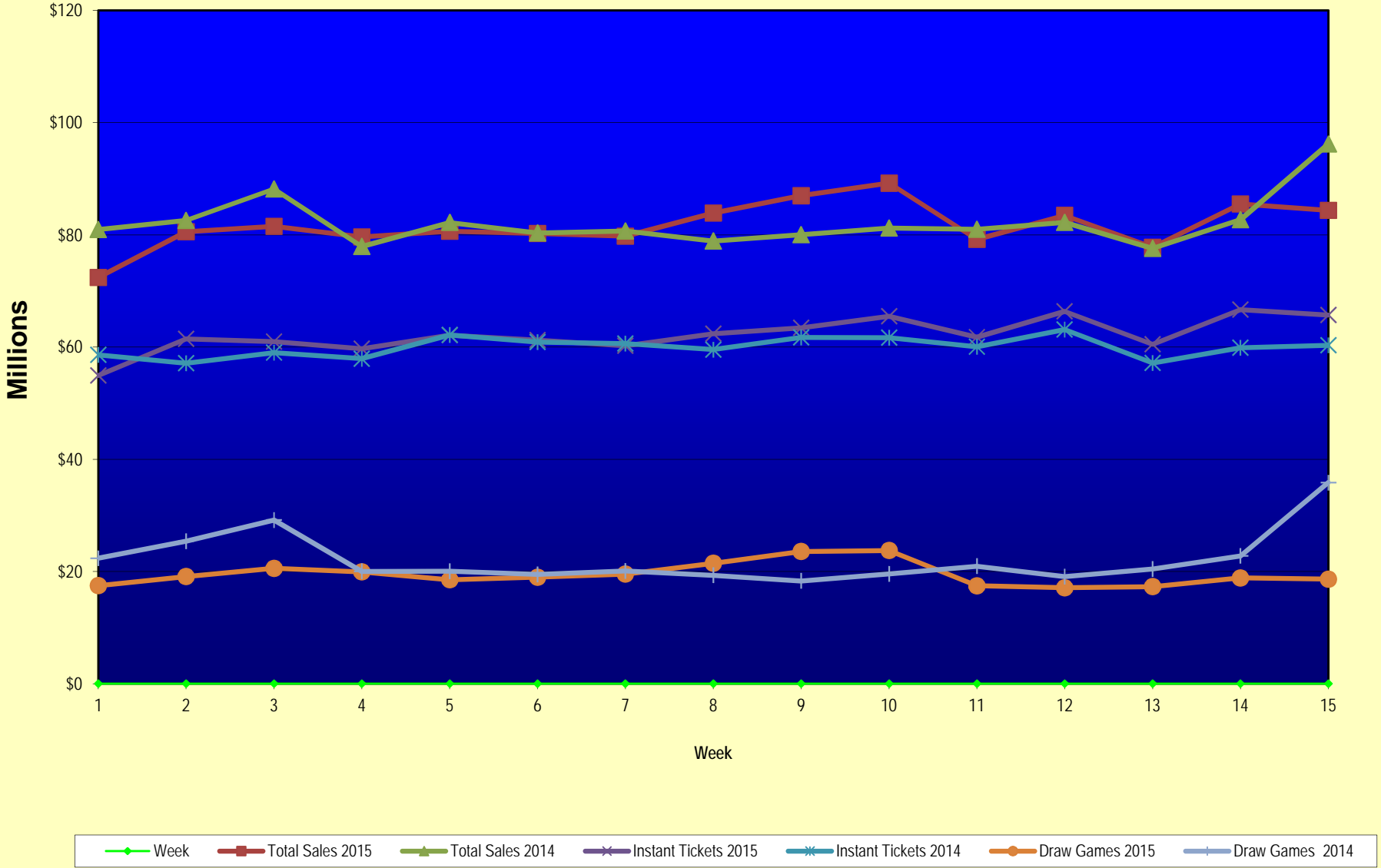
Texas Lottery Commission
Fiscal Year Over Year Change in Sales
Unaudited
FY 2015 Compared to FY 2014

			INSTANT TICKETS				DRAW GAMES				TOTAL SALES			
FY 2015			FY 2015	FY 2014	Difference	% change - Cumulative Sales	FY 2015	FY 2014	Difference	% change - Cumulative Sales	FY 2015	FY 2014	Difference	% change - Cumulative Sales
Week	Week	Ending												
43	6/27/2015			\$58,102,191				\$17,635,736				\$75,737,927		
44	7/4/2015			\$61,566,071				\$18,521,529				\$80,087,600		
45	7/11/2015			\$58,729,674				\$17,913,387				\$76,643,061		
46	7/18/2015			\$58,202,035				\$17,602,032				\$75,804,067		
47	7/25/2015			\$57,220,932				\$17,736,889				\$74,957,821		
48	8/1/2015			\$64,207,294				\$18,208,743				\$82,416,037		
49	8/8/2015			\$60,066,007				\$19,022,945				\$79,088,952		
50	8/15/2015			\$58,374,809				\$18,567,246				\$76,942,055		
51	8/22/2015			\$57,277,475				\$18,916,460				\$76,193,935		
52	8/29/2015			\$61,884,256				\$17,283,925				\$79,168,181		
	8/31/2015 **			\$7,949,803				\$706,956				\$8,656,759		
Total thru Current Week			\$932,824,349	\$899,738,230	\$33,086,119	3.7%	\$292,289,774	\$332,846,585	(\$40,556,811)	-12.2%	\$1,225,114,123	\$1,232,584,815	(\$7,470,692)	-0.6%
Fiscal Year Total			\$932,824,349	\$3,280,229,170			\$292,289,774	\$1,104,367,893			\$1,225,114,123	\$4,384,597,063		

* FY 15 includes 6 days

** FY 15 includes 2 days; FY 14 includes 1 day

Texas Lottery Commission Fiscal Year Over Year Change in Sales



Note: Week 1 is not a full week of sales as this report is prepared on a Fiscal Year basis.

Texas Lottery Commission
Instant Tickets by Price Point
Sales, Prize Expense, Sales Contribution and Payout Percentage With Year Over Year Changes
Unaudited

Fiscal Year	Price Point	# of Active Games	FY Sales	% of Instant Ticket Sales	Year over Year Change in Sales	FY Prize Expense	Year over Year Change in Prize Expense	FY Sales Contribution	Year over Year Change in Contribution	Average Prize Payout %	Year over Year Change in Payout %
2014	\$1.00	22	51,612,713	5.7%		30,932,510		20,680,203		59.9%	-1.3%
Through	\$2.00	29	107,084,428	11.9%		69,534,409		37,550,019		64.9%	-0.1%
12/14/2013	\$3.00	14	96,838,569	10.8%		63,389,050		33,449,519		65.5%	-0.1%
	\$5.00	39	297,583,570	33.1%		202,173,171		95,410,399		67.9%	-0.1%
	\$10.00	12	170,595,050	19.0%		120,409,031		50,186,019		70.6%	-0.7%
	\$20.00	8	142,193,700	15.8%		106,478,085		35,715,615		74.9%	0.0%
	\$50.00	2	33,830,200	3.8%		26,264,051		7,566,149		77.6%	0.0%
Total		126	\$899,738,230			\$619,180,305		\$280,557,925		68.8%	-0.2%
2015	\$1.00	17	47,267,079	5.1%		29,005,598		18,261,481		61.4%	2.4%
thru	\$2.00	26	97,425,530	10.4%		64,521,563		32,903,967		66.2%	2.1%
12/13/2014	\$3.00	12	92,254,815	9.9%		60,803,112		31,451,703		65.9%	0.4%
	\$5.00	37	297,209,005	31.9%		201,911,326		95,297,679		67.9%	0.0%
	\$10.00	13	184,544,700	19.8%		130,222,505		54,322,195		70.6%	0.4%
	\$20.00	8	171,395,920	18.4%		128,517,097		42,878,823		75.0%	0.1%
	\$50.00	3	42,727,300	4.6%		33,205,757		9,521,543		77.7%	0.1%
Total		116	\$932,824,349			\$648,186,957		\$284,637,392		69.5%	0.8%
Variance	\$1.00	-5	-4,345,634		-8.4%	-1,926,912	-6.2%	-2,418,722	-11.7%	1.43%	
2015 to	\$2.00	-3	-9,658,898		-9.0%	-5,012,846	-7.2%	-4,646,052	-12.4%	1.29%	
2014	\$3.00	-2	-4,583,754		-4.7%	-2,585,938	-4.1%	-1,997,816	-6.0%	0.45%	
	\$5.00	-2	-374,565		-0.1%	-261,845	-0.1%	-112,720	-0.1%	0.00%	
	\$10.00	1	13,949,650		8.2%	9,813,474	8.2%	4,136,176	8.2%	-0.02%	
	\$20.00	0	29,202,220		20.5%	22,039,013	20.7%	7,163,207	20.1%	0.10%	
	\$50.00	1	8,897,100		26.3%	6,941,706	26.4%	1,955,394	25.8%	0.08%	
Total		-10	\$33,086,119		3.7%	\$29,006,652	4.7%	\$4,079,467	1.5%	0.67%	

Notes - Instant Ticket Variances

Texas Lottery Commission
Instant Tickets by Price Point
Sales, Prize Expense, Sales Contribution and Payout Percentage With Year Over Year Changes
 Unaudited

			FY 2015		FY 2014	Difference
Sales	\$1 - \$5		\$534,156,429		\$553,119,280	-\$18,962,851
Prize Exp.	\$1 - \$5		\$356,241,598		\$366,029,139	-\$9,787,541
Sales Cont.	\$1 - \$5		\$177,914,831		\$187,090,141	-\$9,175,310
Prize Exp. %	\$1 - \$5		66.7%		66.2%	0.5%
			FY 2015		FY 2014	Difference
Sales	\$10 - \$50		\$398,667,920		\$346,618,950	\$52,048,970
Prize Exp.	\$10 - \$50		\$291,945,359		\$253,151,166	\$38,794,193
Sales Cont.	\$10 - \$50		\$106,722,561		\$93,467,784	\$13,254,777
Prize Exp. %	\$10 - \$50		73.2%		73.0%	0.2%
			FY 2015		FY 2014	Difference
Sales	Instant		\$932,824,349		\$899,738,230	\$33,086,119
Prize Exp.	Instant		\$648,186,957		\$619,180,305	\$29,006,652
Sales Cont.	Instant		\$284,637,392		\$280,557,925	\$4,079,467
Prize Exp. %	Instant		69.5%		68.8%	0.7%

			FY 2015		FY 2014	Difference
Sales	\$1 - \$10		\$718,701,129		\$723,714,330	-\$5,013,201
Prize Exp.	\$1 - \$10		\$486,464,103		\$486,438,170	\$25,933
Sales Cont.	\$1 - \$10		\$232,237,026		\$237,276,160	-\$5,039,134
Prize Exp. %	\$1 - \$10		67.7%		67.2%	0.5%
			FY 2015		FY 2014	Difference
Sales	\$20 - \$50		\$214,123,220		\$176,023,900	\$38,099,320
Prize Exp.	\$20 - \$50		\$161,722,854		\$132,742,135	\$28,980,719
Sales Cont.	\$20 - \$50		\$52,400,366		\$43,281,765	\$9,118,601
Prize Exp. %	\$20 - \$50		75.5%		75.4%	0.1%
			FY 2015		FY 2014	Difference
Sales	Instant		\$932,824,349		\$899,738,230	\$33,086,119
Prize Exp.	Instant		\$648,186,957		\$619,180,305	\$29,006,652
Sales Cont.	Instant		\$284,637,392		\$280,557,925	\$4,079,467
Prize Exp. %	Instant		69.5%		68.8%	0.7%

Texas Lottery Commission
Weekly Sales Summary
& Comparison to Previous Week
 Unaudited

	Week Ending 12/13/2014	% of Sales	Week Ending 12/06/2014	% of Sales	\$ change	% change
	<u>THIS WEEK</u>		<u>LAST WEEK</u>			
Total Sales	<u>\$84,358,228</u>		<u>\$85,511,121</u>		<u>-\$1,152,893</u>	-1.35%
Instant Tickets	<u>\$65,708,630</u>	77.9%	<u>\$66,648,696</u>	77.9%	<u>-\$940,066</u>	-1.41%
Lotto	\$2,390,912	2.8%	\$2,368,094	2.8%	\$22,818	0.96%
Lotto Extra	\$360,296	0.4%	\$359,684	0.4%	\$612	0.17%
Pick 3	\$4,965,326	5.9%	\$5,203,649	6.1%	-\$238,324	-4.58%
Pick 3 Sum It Up	\$90,906	0.1%	\$97,575	0.1%	-\$6,669	-6.83%
Cash Five	\$968,380	1.1%	\$987,770	1.2%	-\$19,390	-1.96%
Texas Two Step	\$860,861	1.0%	\$1,292,696	1.5%	-\$431,835	-33.41%
Mega Millions	\$2,763,671	3.3%	\$2,397,206	2.8%	\$366,465	15.29%
Megaplier	\$644,993	0.8%	\$577,206	0.7%	\$67,787	11.74%
Daily 4	\$1,730,629	2.1%	\$1,786,014	2.1%	-\$55,386	-3.10%
Daily 4 Sum It Up	\$100,850	0.1%	\$106,986	0.1%	-\$6,137	-5.74%
Powerball	\$2,441,310	2.9%	\$2,312,972	2.7%	\$128,338	5.55%
Power Play	\$346,197	0.4%	\$333,011	0.4%	\$13,186	3.96%
All or Nothing	\$743,438	0.9%	\$759,472	0.9%	-\$16,034	-2.11%
Monopoly	\$241,830	0.3%	\$280,090	0.3%	-\$38,260	-13.66%
Total Draw Game Sales	<u>\$18,649,598</u>		<u>\$18,862,425</u>		<u>-\$212,827</u>	-1.13%

* Totals may not sum due to rounding.

Texas Lottery Commission
Weekly Sales Summary
Unaudited

INSTANT TICKETS
TOP TEN SELLING GAMES

For the Week Ending: 12/13/14

Rank	Price Point	Game	Sales (Millions)
1	\$ 20	HOLIDAY GAME BOOK	\$ 5.245
2	\$ 5	CAESARS	\$ 4.121
3	\$ 10	HOLIDAY MAGIC	\$ 3.803
4	\$ 5	HOLIDAY GOLD	\$ 2.802
5	\$ 50	MILLIONNAIRE'S CLUB	\$ 2.384
6	\$ 3	BONUS CASHWORD	\$ 2.331
7	\$ 3	LOTERIA	\$ 2.308
8	\$ 10	\$200,000,000 CASH BLOWOUT	\$ 2.174
9	\$ 20	100X THE CASH	\$ 2.145
10	\$ 5	\$100,000 MERRY MONEY	\$ 2.012

Texas Lottery Commission
Prize Payout Tracking Report
Unaudited

Through the Week Ending: 12/13/14

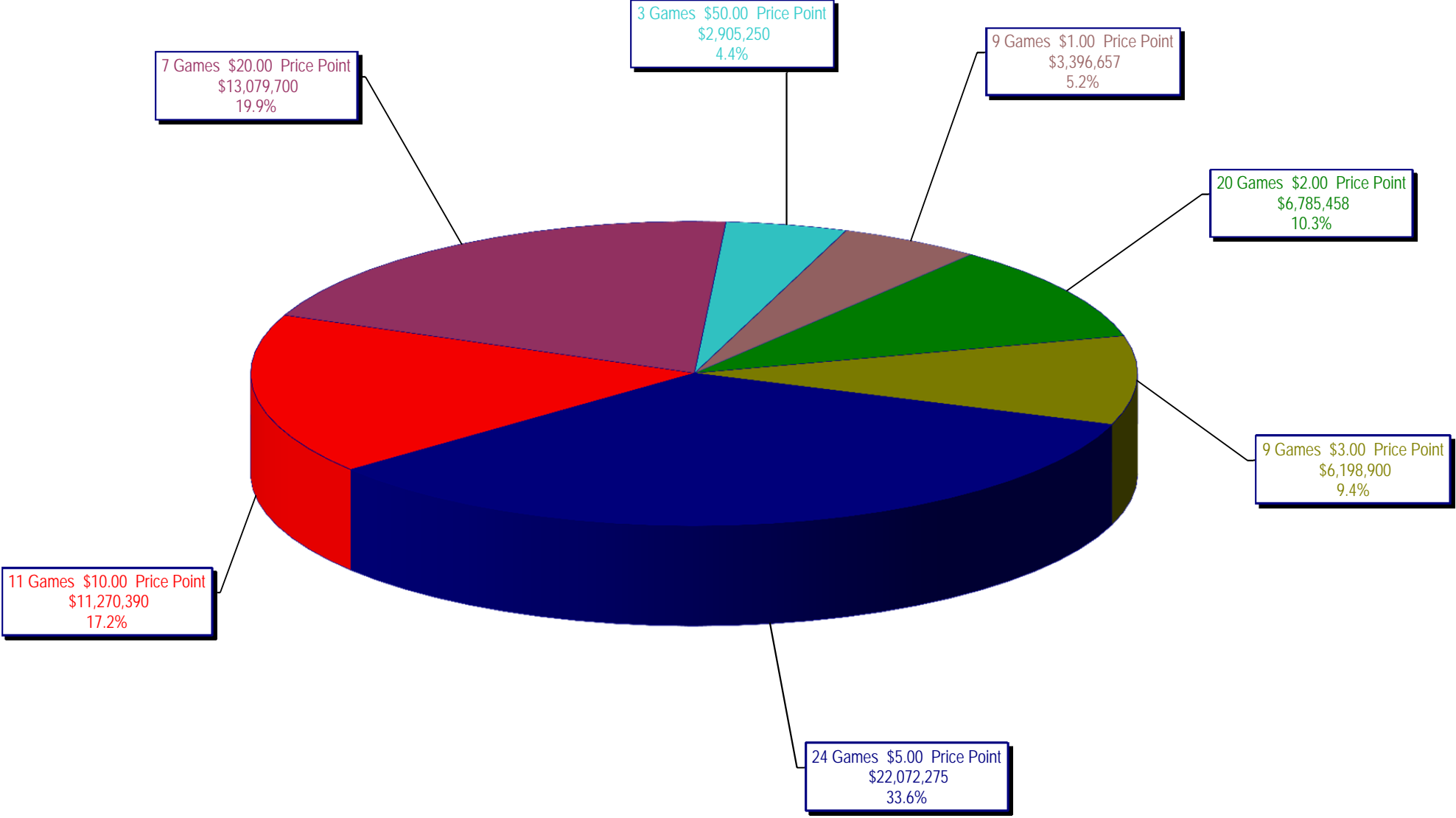
Draw Game Sales

		FY Sales Through Week Ending 12/13/2014		FY Prize Expense Through Week Ending 12/13/2014	Actual* Prize Payout	Base Payout (Prize Pool)
Lotto	\$	34,279,301	\$	17,241,530	50.30%	54.00%
Lotto Extra		5,172,178		2,764,458	53.45%	53.70%
Pick 3		71,206,330		34,332,330	48.22%	50.00%
Pick 3 Sum It Up		1,361,770		597,134	43.85%	50.00%
Cash Five		14,194,888		7,097,456	50.00%	50.00%
Texas Two Step		16,244,941		8,297,854	51.08%	50.00%
Mega Millions		45,130,890		23,016,736	51.00%	50.00%**
Megaplier		10,248,726		5,125,654	50.01%	N/A
Daily 4		23,966,705		11,511,400	48.03%	50.00%
Daily 4 Sum It Up		1,439,192		617,422	42.90%	50.00%
Powerball		48,748,645		24,449,081	50.15%	50.00%**
Power Play		6,389,196		3,204,442	50.15%	N/A
All or Nothing		11,250,312		7,172,102	63.75%	55.98%
Monopoly		2,656,700		3,317,028	124.86%	50.00%
Totals	\$	292,289,774	\$	148,744,626	50.89%	

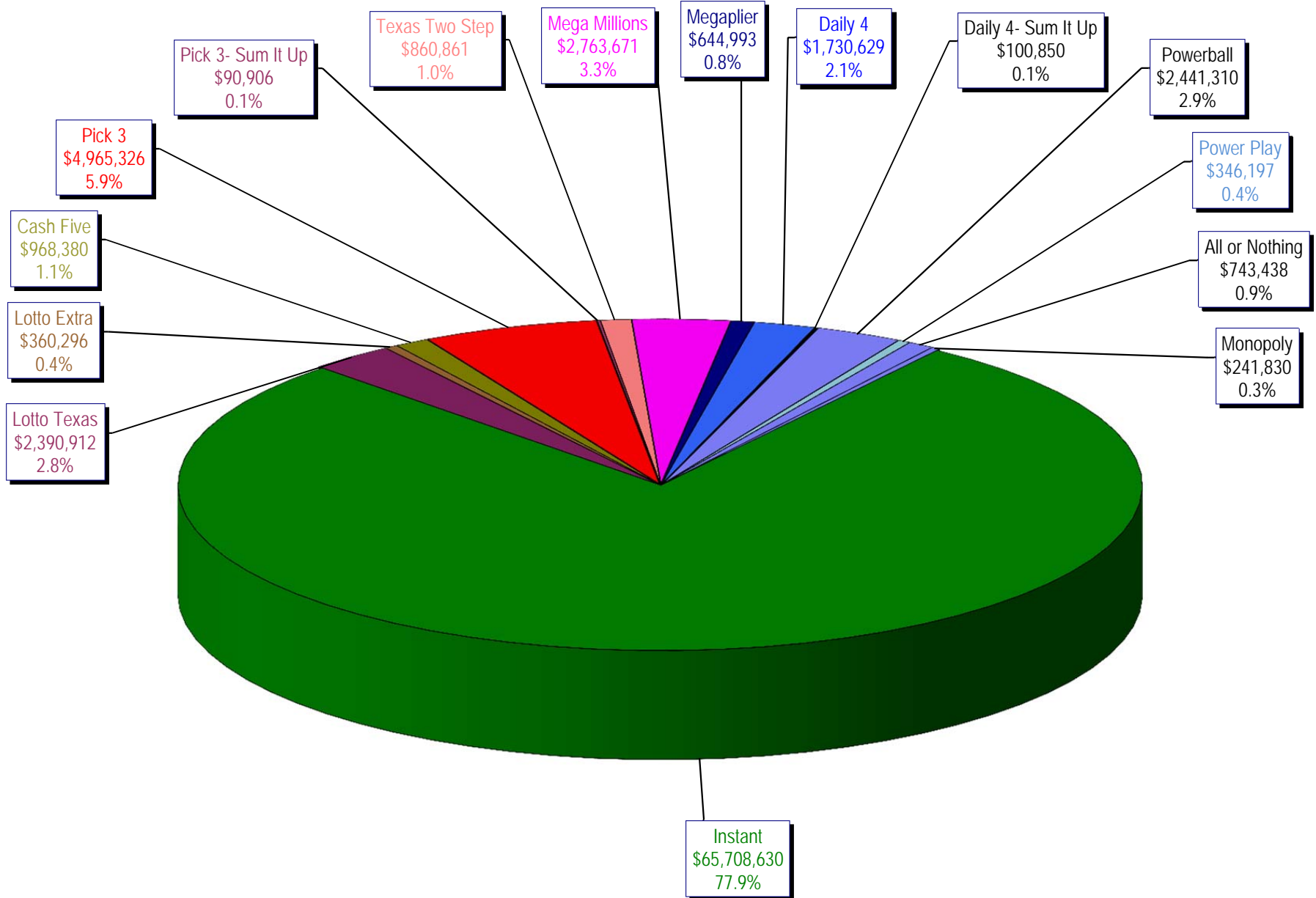
* Before Unclaimed Prizes

** Estimated; depends on # of guaranteed prizes won in Texas

Texas Lottery Commission
Instant Ticket Sales
For the Week Ending 12/13/14
(Unaudited)



Texas Lottery Commission
All Game Sales
For the Week Ending 12/13/14
(Unaudited)



Texas Lottery Commission - Weekly Sales Summary for FY 2015 (Unaudited)

Week Ended	Instant Games	New Games & Dates	Lotto Texas	Jackpot W	S	Lotto Extra	Pick 3	Pick 3 Sum It Up	Cash Five	Texas Two Step	Jackpot M	TH	Mega Millions	Jackpot T	F	Megaplier	Daily 4	Daily 4 Sum It Up	Powerball	Jackpot W	S	Power Play	All or Nothing	Monopoly	Jackpot F	Total	Per Cap.	
9/06/2014*	62,861,604	1589 (\$1.N); 1592 (\$5.N) - 9/1/14	2,281,237	6	6.25	341,232	4,827,600	92,305	958,777	918,635	225	300	1,847,432	25	33	475,313	1,640,023	104,626	3,465,202	100	110	450,723	786,340			81,051,048	3.11	
9/13/2014	61,436,533	0	2,299,834	6.5	6.75	344,225	4,787,666	91,850	960,067	1,214,553	425	575	1,992,737	41	52	501,468	1,571,433	97,036	3,957,407	127	149	497,718	781,088			80,533,614	3.09	
9/20/2014	60,959,234	1647 (\$2.N); 1619 (\$5.N) - 9/15/14	2,307,003	7	7.25	347,119	4,624,949	89,960	952,214	1,582,291	750	925	2,149,120	62	72	528,733	1,536,913	95,355	4,985,548	171	196	597,868	770,822			81,527,128	3.13	
9/27/2014	59,710,056	0	2,357,199	7.5	8.25	353,734	4,540,964	89,289	938,745	1,244,640	1,175	200	2,417,365	83	93	579,889	1,512,957	91,998	4,478,698	225	40	544,723	770,628			79,630,884	3.06	
10/4/2014	62,119,854	0	2,385,322	9	9.5	360,937	4,942,321	94,197	971,047	854,141	200	200	2,966,004	105	120	682,825	1,588,795	98,392	2,443,237	50	60	348,166	786,038			80,651,275	3.09	
10/11/2014	61,253,665	1608 (\$1.N); 1653 (\$5.N); 1651 (\$10.N) - 10/6/14	2,363,624	10.25	11	355,219	4,893,634	94,926	959,659	935,385	225	300	3,310,874	136	150	748,248	1,580,735	94,717	2,522,774	70	80	356,145	769,392			80,238,997	3.08	
10/18/2014	60,230,048	0	2,267,582	11.5	5	343,643	4,664,420	92,081	946,399	842,255	200	225	3,839,669	166	180	841,086	1,522,939	90,307	2,937,145	90	100	398,723	752,154			79,768,450	3.06	
10/25/2014	62,384,112	1655 (\$1.N); 1652 (\$2.N); 1638 (\$10.N); 1637 (\$20.N) - 10/20/14	2,201,043	5.25	5.5	330,460	4,585,640	89,676	933,854	823,726	200	225	4,755,898	200	224	990,074	1,560,894	96,697	3,449,128	110	125	444,897	746,246	467,410	15	83,859,755	3.22	
11/1/2014	63,404,713	1648 (\$3.N) - 10/31/14	2,289,864	5.75	6	346,139	4,620,420	87,141	925,312	993,957	300	425	5,950,540	252	284	1,199,010	1,554,893	93,945	3,903,664	142	159	494,803	733,770	375,360	18	86,973,530	3.34	
11/8/2014	65,486,719	1600 (\$2.N); 1656 (\$5.N) - 11/3/14	2,269,671	6.25	6.5	345,144	4,823,896	92,098	958,406	1,336,742	550	700	4,908,320	321	15	1,013,337	1,669,728	97,535	4,560,744	178	203	561,387	753,046	358,980	21	89,235,751	3.42	
11/15/2014	61,745,521	1649 (\$5.N) - 11/13/14	2,172,758	6.75	7	326,413	4,582,139	86,975	936,682	1,604,425	900	1,100	1,863,118	20	26	471,023	1,587,677	91,661	2,341,252	40	50	329,995	730,482	325,005	15	79,195,125	3.04	
11/22/2014	66,353,583	1591 (\$2.N); 1659 (\$5.N); 1650 (\$5.N) - 11/17/14	2,199,718	7.25	7.5	334,361	4,639,564	87,768	933,490	851,281	200	225	2,013,021	35	43	503,022	1,588,603	91,235	2,470,536	60	70	341,955	728,436	325,095	18	83,461,667	3.20	
11/29/2014	60,471,184	0	2,214,747	7.75	8.5	337,671	4,624,896	88,080	912,039	955,695	300	400	2,040,181	52	61	503,117	1,577,411	90,692	2,632,388	80	90	362,091	681,192	282,930	21	77,774,313	2.98	
12/6/2014	66,648,696	1603 (\$1.N); 1646 (\$2.N); 1645 (\$5.N) - 12/01/14	2,368,094	9	9.75	359,684	5,203,649	97,575	987,770	1,292,696	550	725	2,397,206	70	80	577,206	1,786,014	106,986	2,312,972	40	50	333,011	759,472	280,090	25	85,511,121	3.28	
12/13/2014	65,708,630	1613 (\$3.N) - 12/10/14	2,390,912	10.25	11	360,296	4,965,326	90,906	968,380	860,861	200	225	2,763,671	91	102	644,993	1,730,629	100,850	2,441,310	60	70	346,197	743,438	241,830	25	84,358,228	3.24	
weekly change	-1.4%		1.0%			0.2%	-4.6%	-6.8%	-2.0%	-33.4%			15.3%			11.7%	-3.1%	-5.7%	5.5%			4.0%	-2.1%	-13.7%			-13.7%	
	SALES		SALES			SALES	SALES	SALES	SALES	SALES			SALES	SALES	SALES	SALES	SALES	SALES	SALES	SALES	SALES	SALES	SALES	SALES	SALES	SALES	% of Sales	
Calendar Year to date	3,152,926,625		125,538,814			18,205,741	241,915,615	4,748,349	48,993,769	54,479,486			140,646,924			32,626,292	79,748,875	4,891,374	173,082,761			22,099,133	42,028,109	2,656,700		4,144,588,566	100.0%	
Fiscal Year to date 2015	932,824,349		34,279,301			5,172,178	71,206,330	1,361,770	14,194,888	16,244,941			45,130,890			10,248,726	23,966,705	1,439,192	48,748,645			6,389,196	11,250,312	2,656,700		1,225,114,123	100.0%	
*Full week includes 1 day from FY14																												