



WEEKLY SALES SUMMARY

Unaudited

[Week Ending: 12/15/2012](#)

Texas Lottery Commission
Fiscal Year to Date Sales Comparison
Unaudited

Through the week ending 12/15/2012 (16 weeks)

Sales by Game	FY 2011 *	FY 2012 **	FY 2013	\$ Change		% Change	
				FY 2013 to FY 2011	FY 2013 to FY 2012	FY 2013 to FY 2011	FY 2013 to FY 2012
Instants	\$ 808,060,334	\$ 829,045,279	\$ 874,492,895	\$ 66,432,561	\$ 45,447,616	8.2%	5.5%
Lotto Texas	50,460,194	52,310,868	46,960,678	-3,499,516	-5,350,190	-6.9%	-10.2%
Pick 3	80,978,149	77,995,596	77,406,466	-3,571,683	-589,131	-4.4%	-0.8%
Pick 3 Sum It Up	1,642,001	1,585,907	1,455,517	-186,485	-130,390	-11.4%	-8.2%
Cash Five	19,116,021	18,998,877	16,573,526	-2,542,495	-2,425,351	-13.3%	-12.8%
Texas Two Step	14,724,241	18,346,925	16,419,366	1,695,125	-1,927,559	11.5%	-10.5%
Mega Millions	40,522,064	43,275,252	31,437,643	-9,084,421	-11,837,609	-22.4%	-27.4%
Megaplier	9,037,010	9,713,612	7,290,355	-1,746,655	-2,423,257	-19.3%	-24.9%
Daily 4	16,776,701	18,356,766	20,288,527	3,511,826	1,931,762	20.9%	10.5%
Daily 4 Sum It Up	1,319,201	1,370,986	1,369,493	50,292	-1,493	3.8%	-0.1%
Powerball	25,339,512	37,281,662	98,056,828	72,717,316	60,775,166	287.0%	163.0%
Power Play	6,109,399	8,160,792	9,388,498	3,279,099	1,227,706	53.7%	15.0%
All or Nothing	-	-	28,136,339	28,136,339	28,136,339	-	-
Total	\$ 1,074,084,827	\$ 1,116,442,521	\$ 1,229,276,130	\$ 155,191,304	\$ 112,833,609	14.4%	10.1%

* 3 extra days

** 2 extra days

Texas Lottery Commission
 Fiscal Year to Date Cumulative Average Sales Comparison
 Unaudited

Through the week ending 12/15/2012 (16 weeks)

Sales by Game	FY 2011	FY 2012	FY 2013
Instant	\$ 7,413,398	\$ 7,676,345	\$ 8,249,933
Lotto Texas	462,938	484,360	443,025
Pick 3	742,919	722,181	730,250
Pick 3 Sum It Up	15,064	14,684	13,731
Cash Five	175,376	175,916	156,354
Texas Two Step	135,085	169,879	154,900
Mega Millions	371,762	400,697	296,582
Megaplier	82,908	89,941	68,777
Daily 4	153,915	169,970	191,401
Daily 4 Sum It Up	12,103	12,694	12,920
Powerball	232,473	345,201	925,064
Power Play	56,050	75,563	88,571
All or Nothing	-	-	287,106 *
Total	\$ <u>9,853,989</u>	\$ <u>10,337,431</u>	\$ <u>11,618,613</u>
	thru 12/18/2010 109 days	thru 12/17/2011 108 days	thru 12/15/2012 106 days * 98 days

Texas Lottery Commission
Fiscal Year Over Year Change in Sales
Unaudited
FY 2013 Compared to FY 2012

Week	FY 2013 Week Ending	INSTANT TICKETS				DRAW GAMES				TOTAL SALES			
		FY 2013	FY 2012	Difference	% change - Cumulative Sales	FY 2013	FY 2012	Difference	% change - Cumulative Sales	FY 2013	FY 2012	Difference	% change - Cumulative Sales
1	9/1/2012**	\$9,611,328	\$25,147,181	(\$15,535,853)	-61.8%	\$3,712,535	\$9,704,561	(\$5,992,026)	-61.7%	\$13,323,863	\$34,851,742	(\$21,527,879)	-61.8%
2	9/8/2012	\$56,941,761	\$50,591,068	\$6,350,693	12.6%	\$19,305,417	\$17,681,853	\$1,623,564	9.2%	\$76,247,178	\$68,272,921	\$7,974,257	11.7%
3	9/15/2012	\$56,302,875	\$49,835,063	\$6,467,812	13.0%	\$20,857,230	\$16,842,326	\$4,014,904	23.8%	\$77,160,105	\$66,677,389	\$10,482,716	15.7%
4	9/22/2012	\$54,974,438	\$49,777,138	\$5,197,300	10.4%	\$20,570,277	\$17,504,800	\$3,065,477	17.5%	\$75,544,715	\$67,281,938	\$8,262,777	12.3%
5	9/29/2012	\$54,606,674	\$51,040,274	\$3,566,400	7.0%	\$20,462,690	\$18,653,100	\$1,809,591	9.7%	\$75,069,364	\$69,693,374	\$5,375,991	7.7%
6	10/6/2012	\$59,223,327	\$53,715,157	\$5,508,170	10.3%	\$19,279,973	\$17,225,680	\$2,054,293	11.9%	\$78,503,300	\$70,940,837	\$7,562,463	10.7%
7	10/13/2012	\$57,075,606	\$51,942,121	\$5,133,485	9.9%	\$18,638,467	\$17,854,980	\$783,487	4.4%	\$75,714,073	\$69,797,101	\$5,916,972	8.5%
8	10/20/2012	\$56,630,134	\$52,837,769	\$3,792,365	7.2%	\$18,998,943	\$19,558,519	(\$559,577)	-2.9%	\$75,629,077	\$72,396,288	\$3,232,789	4.5%
9	10/27/2012	\$55,789,743	\$52,206,644	\$3,583,099	6.9%	\$20,130,190	\$21,504,565	(\$1,374,376)	-6.4%	\$75,919,933	\$73,711,209	\$2,208,724	3.0%
10	11/3/2012	\$58,142,777	\$56,265,310	\$1,877,467	3.3%	\$20,638,008	\$20,870,086	(\$232,079)	-1.1%	\$78,780,785	\$77,135,396	\$1,645,389	2.1%
11	11/10/2012	\$57,484,804	\$55,682,645	\$1,802,159	3.2%	\$20,862,872	\$17,862,404	\$3,000,468	16.8%	\$78,347,676	\$73,545,049	\$4,802,627	6.5%
12	11/17/2012	\$55,805,228	\$54,978,079	\$827,149	1.5%	\$21,660,705	\$17,879,985	\$3,780,721	21.1%	\$77,465,933	\$72,858,064	\$4,607,870	6.3%
13	11/24/2012	\$61,331,977	\$53,942,448	\$7,389,529	13.7%	\$27,172,853	\$16,877,145	\$10,295,708	61.0%	\$88,504,830	\$70,819,593	\$17,685,237	25.0%
14	12/1/2012	\$58,420,598	\$57,153,469	\$1,267,129	2.2%	\$62,797,943	\$18,298,636	\$44,499,307	243.2%	\$121,218,541	\$75,452,105	\$45,766,436	60.7%
15	12/8/2012	\$62,489,745	\$55,318,284	\$7,171,461	13.0%	\$19,630,155	\$19,033,326	\$596,829	3.1%	\$82,119,900	\$74,351,610	\$7,768,290	10.4%
16	12/15/2012	\$59,661,880	\$58,612,629	\$1,049,251	1.8%	\$20,064,982	\$20,045,279	\$19,704	0.1%	\$79,726,862	\$78,657,908	\$1,068,955	1.4%
17	12/22/2012		\$60,628,256				\$22,572,986				\$83,201,242		
18	12/29/2012		\$63,065,007				\$19,948,521				\$83,013,528		
19	1/5/2013		\$60,479,896				\$17,331,888				\$77,811,784		
20	1/12/2013		\$57,689,526				\$17,568,732				\$75,258,258		
21	1/19/2013		\$58,704,854				\$19,886,540				\$78,591,394		
22	1/26/2013		\$57,611,325				\$20,641,697				\$78,253,022		
23	2/2/2013		\$65,553,366				\$23,689,855				\$89,243,221		
24	2/9/2013		\$75,070,485				\$28,361,583				\$103,432,068		
25	2/16/2013		\$66,679,947				\$19,588,615				\$86,268,562		
26	2/23/2013		\$64,868,899				\$19,965,388				\$84,834,287		
27	3/2/2013		\$67,135,065				\$20,947,181				\$88,082,246		
28	3/9/2013		\$68,299,006				\$22,152,639				\$90,451,645		
29	3/16/2013		\$65,013,692				\$23,351,718				\$88,365,410		
30	3/23/2013		\$64,035,255				\$27,416,609				\$91,451,864		
31	3/30/2013		\$65,135,991				\$84,628,987				\$149,764,978		
32	4/6/2013		\$66,860,957				\$19,899,400				\$86,760,357		
33	4/13/2013		\$64,028,898				\$20,220,141				\$84,249,039		
34	4/20/2013		\$63,623,892				\$20,974,282				\$84,598,174		
35	4/27/2013		\$61,743,623				\$20,267,388				\$82,011,011		
36	5/4/2013		\$64,851,962				\$20,642,982				\$85,494,944		
37	5/11/2013		\$65,472,556				\$19,140,768				\$84,613,324		
38	5/18/2013		\$60,572,658				\$18,342,814				\$78,915,472		
39	5/25/2013		\$58,959,028				\$18,618,060				\$77,577,088		
40	6/1/2013		\$57,409,086				\$19,014,645				\$76,423,731		
41	6/8/2013		\$59,845,545				\$20,527,958				\$80,373,503		
42	6/15/2013		\$57,021,498				\$19,386,186				\$76,407,684		

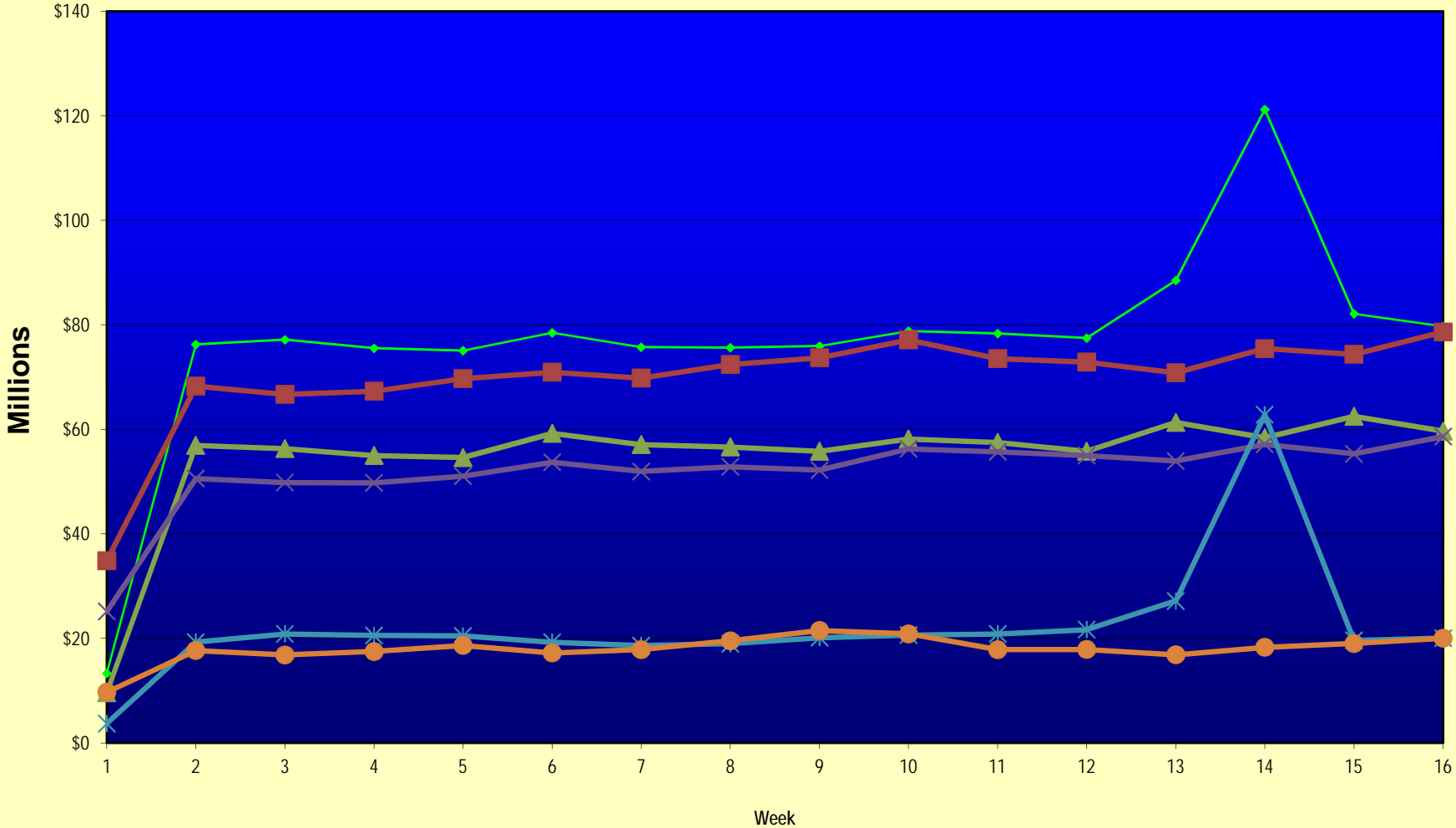
Note: Week 1 is not a full week of sales as this report is prepared on a Fiscal Year basis.

Texas Lottery Commission
Fiscal Year Over Year Change in Sales
Unaudited
FY 2013 Compared to FY 2012

Week	FY 2013 Week Ending	INSTANT TICKETS				DRAW GAMES				TOTAL SALES			
		FY 2013	FY 2012	Difference	% change - Cumulative Sales	FY 2013	FY 2012	Difference	% change - Cumulative Sales	FY 2013	FY 2012	Difference	% change - Cumulative Sales
43	6/22/2013		\$57,892,076				\$17,594,154				\$75,486,230		
44	6/29/2013		\$57,497,435				\$18,153,658				\$75,651,093		
45	7/6/2013		\$60,345,000				\$19,059,152				\$79,404,152		
46	7/13/2013		\$57,683,321				\$18,751,043				\$76,434,364		
47	7/20/2013		\$57,083,343				\$18,769,201				\$75,852,544		
48	7/27/2013		\$54,006,781				\$18,934,103				\$72,940,884		
49	8/3/2013		\$56,557,409				\$20,206,705				\$76,764,114		
50	8/10/2013		\$57,799,452				\$22,832,120				\$80,631,572		
51	8/17/2013		\$54,845,724				\$25,435,624				\$80,281,348		
52	8/24/2013		\$55,661,277				\$17,524,474				\$73,185,751		
	8/31/2013		\$47,363,984				\$14,929,528				\$62,293,512		
Total thru Current Week		\$874,492,895	\$829,045,279	\$45,447,616	5.5%	\$354,783,235	\$287,397,242	\$67,385,993	23.4%	\$1,229,276,130	\$1,116,442,521	\$112,833,609	10.1%
Fiscal Year Total		\$874,492,895	\$3,086,141,354			\$354,783,235	\$1,104,674,559			\$1,229,276,130	\$4,190,815,913		

** FY 2012 includes 3 days; FY 2013 includes 1 day.

Texas Lottery Commission Fiscal Year Over Year Change in Sales



◆ Total Sales 2013
 ■ Total Sales 2012
 ▲ Instant Tickets 2013
 ✕ Instant Tickets 2012
 ✱ Draw Games 2013
 ● Draw Games 2012

Note: Week 1 is not a full week of sales as this report is prepared on a Fiscal Year basis.

Texas Lottery Commission
Instant Tickets by Price Point
Sales, Prize Expense, Sales Contribution and Payout Percentage With Year Over Year Changes
Unaudited

Fiscal Year	Price Point	# of Active Games	FY Sales	% of Instant Ticket Sales	Year over Year Change in Sales	FY Prize Expense	Year over Year Change in Prize Expense	FY Sales Contribution	Year over Year Change in Contribution	Average Prize Payout %	Year over Year Change in Payout %
2012	\$1.00	25	60,153,284	7.3%		37,001,350		23,151,934		61.5%	1.2%
thru	\$2.00	25	114,183,204	13.8%		74,246,848		39,936,356		65.0%	-0.8%
12/17/2011	\$3.00	15	103,663,884	12.5%		68,031,889		35,631,995		65.6%	0.1%
	\$5.00	32	257,667,165	31.1%		175,168,658		82,498,507		68.0%	0.1%
	\$7.00	4	17,524,892	2.1%		11,916,764		5,608,128		68.0%	0.0%
	\$10.00	13	135,002,140	16.3%		95,079,414		39,922,726		70.4%	-0.8%
	\$20.00	5	117,816,060	14.2%		87,893,506		29,922,554		74.6%	-0.1%
	\$50.00	1	23,034,650	2.8%		17,891,867		5,142,783		77.7%	0.1%
Total		120	\$829,045,279			\$567,230,297		\$261,814,982		68.4%	-0.1%
2013	\$1.00	25	52,533,698	6.0%		32,225,895		20,307,803		61.3%	1.2%
thru	\$2.00	27	111,912,058	12.8%		72,757,047		39,155,011		65.0%	-0.1%
12/15/2012	\$3.00	14	113,288,862	13.0%		74,304,870		38,983,992		65.6%	0.1%
	\$5.00	41	265,267,140	30.3%		180,115,441		85,151,699		67.9%	-0.2%
	\$7.00	2	14,149,387	1.6%		9,616,865		4,532,522		68.0%	0.0%
	\$10.00	11	148,904,950	17.0%		105,171,961		43,732,989		70.6%	-0.4%
	\$20.00	7	129,835,500	14.8%		97,190,713		32,644,787		74.9%	0.1%
	\$50.00	3	38,601,300	4.4%		29,970,632		8,630,668		77.6%	0.0%
Total		130	\$874,492,895			\$601,353,422		\$273,139,473		68.8%	0.2%
Variance	\$1.00	0	-7,619,586		-12.7%	-4,775,456	-12.9%	-2,844,130	-12.3%	-0.17%	
2013 to	\$2.00	2	-2,271,146		-2.0%	-1,489,801	-2.0%	-781,345	-2.0%	-0.01%	
2012	\$3.00	-1	9,624,978		9.3%	6,272,981	9.2%	3,351,997	9.4%	-0.04%	
	\$5.00	9	7,599,975		2.9%	4,946,782	2.8%	2,653,193	3.2%	-0.08%	
	\$7.00	-2	-3,375,505		-19.3%	-2,299,899	-19.3%	-1,075,606	-19.2%	-0.03%	
	\$10.00	-2	13,902,810		10.3%	10,092,547	10.6%	3,810,263	9.5%	0.20%	
	\$20.00	2	12,019,440		10.2%	9,297,206	10.6%	2,722,234	9.1%	0.25%	
	\$50.00	2	15,566,650		67.6%	12,078,764	67.5%	3,487,886	67.8%	-0.03%	
Total		10	\$45,447,616		5.5%	\$34,123,125	6.0%	\$11,324,491	4.3%	0.35%	

Notes - Instant Ticket Variances

Texas Lottery Commission
Weekly Sales Summary
& Comparison to Previous Week
 Unaudited

	Week Ending 12/15/2012	% of Sales	Week Ending 12/08/2012	% of Sales	\$ change	% change
	<u>THIS WEEK</u>		<u>LAST WEEK</u>			
Total Sales	<u>\$79,726,862</u>		<u>\$82,119,900</u>		<u>-\$2,393,038</u>	-2.91%
Instant Tickets	<u>\$59,661,880</u>	74.8%	<u>\$62,489,745</u>	76.1%	<u>-\$2,827,865</u>	-4.53%
Lotto	\$3,087,087	3.9%	\$2,971,837	3.6%	\$115,250	3.88%
Pick 3	\$5,221,374	6.5%	\$5,374,747	6.5%	-\$153,373	-2.85%
Pick 3 Sum It Up	\$98,173	0.1%	\$101,479	0.1%	-\$3,306	-3.26%
Cash Five	\$1,104,769	1.4%	\$1,129,990	1.4%	-\$25,221	-2.23%
Texas Two Step	\$1,928,422	2.4%	\$1,359,739	1.7%	\$568,683	41.82%
Mega Millions	\$1,933,357	2.4%	\$1,861,503	2.3%	\$71,854	3.86%
Megaplier	\$456,193	0.6%	\$445,171	0.5%	\$11,022	2.48%
Daily 4	\$1,398,647	1.8%	\$1,391,477	1.7%	\$7,171	0.52%
Daily 4 Sum It Up	\$88,811	0.1%	\$94,879	0.1%	-\$6,069	-6.40%
Powerball	\$2,808,938	3.5%	\$2,832,293	3.4%	-\$23,355	-0.82%
Power Play	\$364,704	0.5%	\$362,145	0.4%	\$2,559	0.71%
All or Nothing	\$1,574,508	2.0%	\$1,704,896	2.1%	-\$130,388	-7.65%
Total Draw Game Sales	<u>\$20,064,982</u>		<u>\$19,630,155</u>		<u>\$434,828</u>	2.22%

* Totals may not sum due to rounding.

Texas Lottery Commission
Weekly Sales Summary
Unaudited

INSTANT TICKETS
TOP TEN SELLING GAMES

For the Week Ending: 12/15/12

Rank	Price Point	Game	Sales (Millions)
1	\$ 10	HOLIDAY DOUBLER	\$ 3.808
2	\$ 5	\$100,000 CASH	\$ 3.316
3	\$ 5	HAPPY HOLIDAYS	\$ 3.215
4	\$ 20	MERRY MILLIONS	\$ 3.035
5	\$ 20	\$500 MILLION EXTREME CASH BLAST	\$ 2.378
6	\$ 50	\$7,500,000 FORTUNE	\$ 2.361
7	\$ 3	LOTERIA TEXAS	\$ 2.159
8	\$ 10	\$200 MILLION CASH SPECTACULAR	\$ 1.901
9	\$ 3	JINGLE BELL CROSSWORD	\$ 1.834
10	\$ 5	NUTCRACKER CASH	\$ 1.767

Texas Lottery Commission
Prize Payout Tracking Report
Unaudited

Through Week Ending 12/15/12

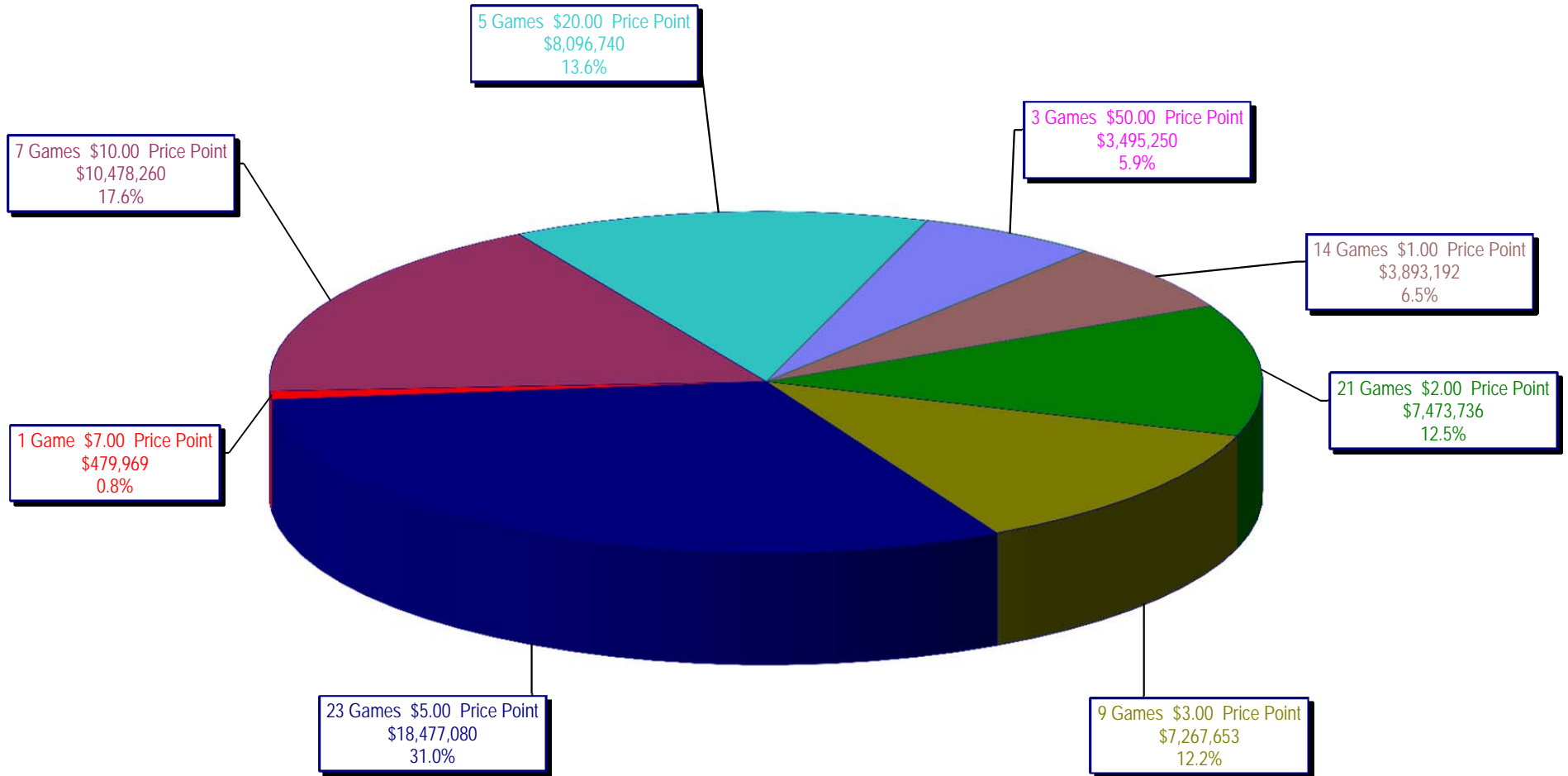
Draw Game Sales

		FY Sales Through Week Ending 12/15/2012		FY Prize Expense Through Week Ending 12/15/2012	Actual* Prize Payout	Base Payout (Prize Pool)
Lotto	\$	46,960,678	\$	30,354,427	64.64%	50.00%
Pick 3		77,406,466		41,576,950	53.71%	50.00%
Pick 3 Sum It Up		1,455,517		681,787	46.84%	50.00%
Cash Five		16,573,526		8,288,464	50.01%	50.00%
Texas Two Step		16,419,366		8,279,183	50.42%	50.00%
Mega Millions		31,437,643		15,162,568	48.23%	50.00%**
Megaplier		7,290,355		3,688,838	50.60%	N/A
Daily 4		20,288,527		8,587,575	42.33%	50.00%
Daily 4 Sum It Up		1,369,493		509,940	37.24%	50.00%
Powerball		98,056,828		49,729,887	50.72%	50.00%**
Power Play		9,388,498		5,141,880	54.77%	N/A
All or Nothing		28,136,339		16,458,778	58.50%	50.00%
Totals	\$	354,783,235	\$	188,460,276	53.12%	

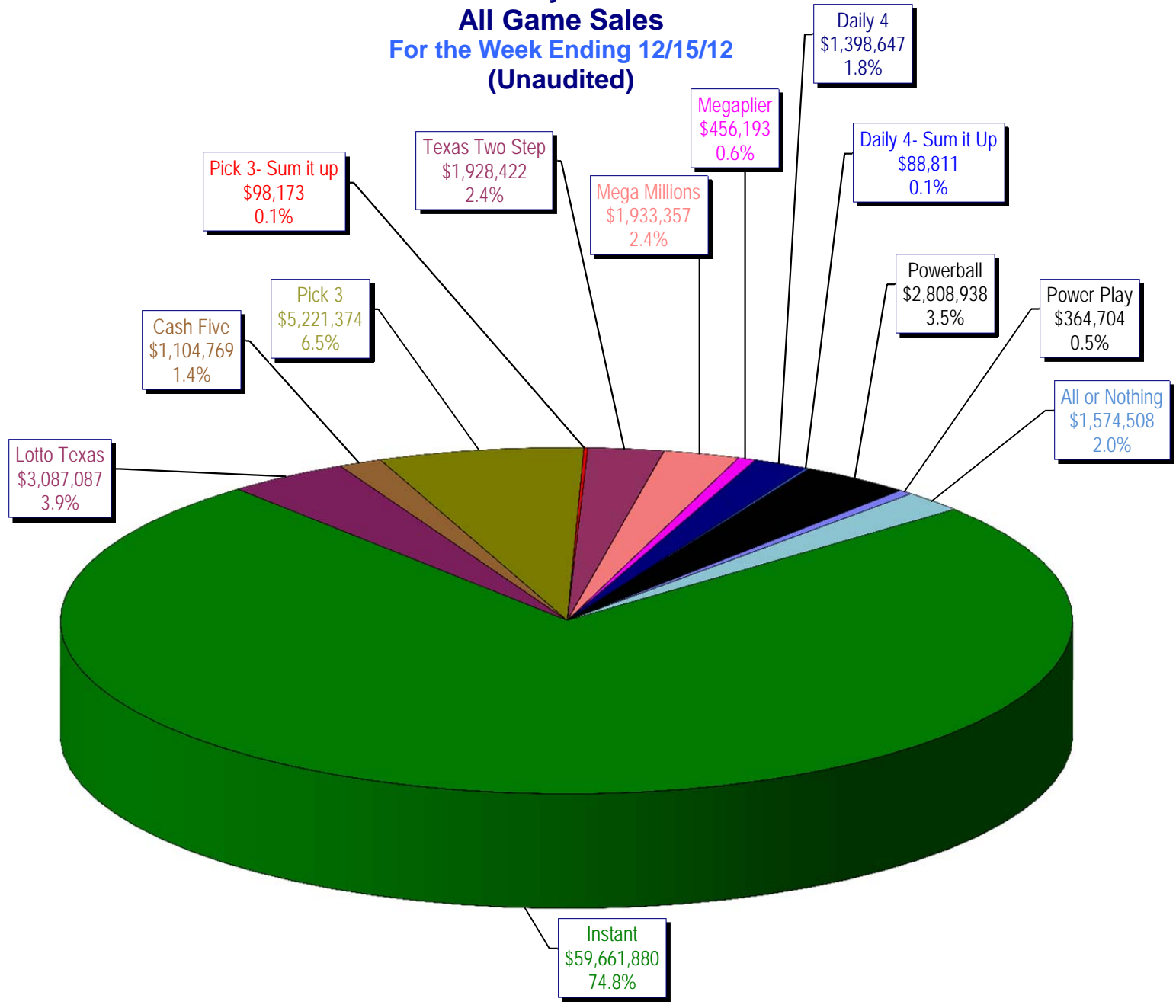
* Before Unclaimed Prizes

** Estimated; depends on # of guaranteed prizes won in Texas

Texas Lottery Commission
Instant Ticket Sales
For the Week Ending 12/15/12
(Unaudited)



**Texas Lottery Commission
All Game Sales
For the Week Ending 12/15/12
(Unaudited)**



Texas Lottery Commission - Weekly Sales Summary for FY 2013 (Unaudited)

Week Ended	Instant Games	New Games & Dates	Lotto Texas	Jackpot W S	Pick 3	Pick 3 Sum It Up	Cash Five	Texas Two Step	Jackpot M TH	Mega Millions	Jackpot T F	Megaplier	Daily 4	Daily 4 Sum It Up	Powerball	Jackpot W S	Power Play	All or Nothing	Total	Per Cap.
9/1/2012	56,975,312	1446 (\$1, N); 1444 (\$2, N) - 08/27/12	2,972,415	12 13	4,967,337	105,441	1,198,597	1,455,689	500 675	2,769,421	73 83	612,072	1,419,103	97,265	2,680,694	70 80	364,030		75,617,375	2.95
9/8/2012	56,941,761	1440 (\$2, N); 1458 (\$3, N); 1459 (\$5, N) - 09/03/12	3,005,564	14 15	5,112,132	106,959	1,185,494	1,179,003	875 200	3,140,536	93 105	665,392	1,412,279	99,861	3,002,910	90 100	395,287		76,247,178	2.97
9/15/2012	56,302,875	1452 (\$3, N) - 09/10/12	2,999,894	16 17	4,785,209	95,720	1,118,519	894,412	225 200	2,684,227	120 12	580,869	1,290,478	90,795	3,373,296	110 125	417,470	2,526,342	77,160,105	3.01
9/22/2012	54,974,438	1460 (\$1, N); 1461 (\$5, N) - 09/17/12	2,986,898	18 19	4,611,684	89,173	1,091,440	986,264	225 325	1,874,336	15 12	452,082	1,258,191	86,390	4,122,790	149 174	479,344	2,531,686	75,544,715	2.94
9/29/2012	54,606,674	1462 (\$2, N); 1472 (\$10, N) - 09/24/12	3,047,519	20 21	4,708,250	90,752	1,077,739	1,313,257	475 625	1,884,366	14 21	452,334	1,278,847	87,211	3,779,359	200 40	445,091	2,297,966	75,069,364	2.92
10/6/2012	59,223,327	1464 (\$5, N) - 10/01/12	3,164,231	22 23	4,947,571	96,251	1,121,146	1,188,386	800 200	2,055,918	28 36	482,303	1,310,612	89,270	2,266,428	50 40	312,877	2,244,980	78,503,300	3.06
10/13/2012	57,075,606	1465 (\$1, N); 1466 (\$20, N) - 10/08/2012	3,133,742	24 25	4,793,793	89,663	1,074,687	865,146	225 200	2,163,099	45 53	492,614	1,261,858	84,585	2,241,120	50 60	309,684	2,128,476	75,714,073	2.95
10/20/2012	56,630,134	1467 (\$1, N); 1468 (\$5, N) - 10/15/12	3,172,820	26 27	4,959,071	88,413	1,074,980	970,100	225 325	1,984,966	61 12	466,730	1,296,602	84,868	2,447,518	70 80	328,436	2,124,439	75,629,077	2.95
10/27/2012	55,789,743	1469 (\$2, N); 1470 (\$10, N) - 10/22/2012	3,204,694	28 29	5,550,567	96,242	1,063,201	1,226,578	450 600	1,778,725	13 21	430,528	1,381,019	91,618	2,914,062	90 100	371,273	2,021,684	75,919,933	2.96
11/3/2012	58,142,777	1503 (\$5, N) - 10/29/2012	3,392,650	30 31	5,501,964	101,742	1,078,593	860,073	200 225	1,950,117	27 32	462,385	1,393,099	93,773	3,466,242	110 124	424,170	1,913,200	78,780,785	3.07
11/10/2012	57,484,804	1475 (\$1, N); 1476 (\$3, N) - 11/05/2012	3,061,999	32 4	5,468,924	100,767	1,083,928	837,666	200 200	1,783,099	12 13	430,343	1,402,194	94,451	4,246,246	143 168	491,538	1,861,718	78,347,676	3.05
11/17/2012	55,805,228	1477 (\$2, N); 1478 (\$5, N) - 11/12/2012	2,599,190	5 6	5,248,059	91,989	1,059,723	920,319	225 300	1,841,571	19 26	440,783	1,345,121	88,391	5,638,425	185 214	615,323	1,771,812	77,465,933	3.02
11/24/2012	61,331,977	1394 (\$50, N) - 11/19/2012	2,768,876	7 8	5,086,879	91,409	1,021,878	883,407	425 200	2,003,365	33 41	472,723	1,300,693	85,037	10,768,045	250 325	1,053,006	1,637,536	88,504,830	3.45
12/1/2012	58,420,598	0	3,304,053	9 10	5,123,778	97,511	1,086,916	925,805	225 275	2,358,380	49 12	533,175	1,319,684	92,240	43,264,700	550 40	2,894,606	1,797,096	121,218,541	4.72
12/8/2012	62,489,745	1479 (\$1, N); 1485 (\$5, N) - 12/03/12	2,971,837	11 12	5,374,747	101,479	1,129,990	1,359,739	425 575	1,861,503	13 20	445,171	1,391,477	94,879	2,832,293	50 40	362,145	1,704,896	82,119,900	3.20
12/15/2012	59,661,880	0	3,087,087	13 14	5,221,374	98,173	1,104,769	1,928,422	775 1,000	1,933,357	27 35	456,193	1,398,647	88,811	2,808,938	50 40	364,704	1,574,508	79,726,862	3.11
weekly change	-4.5%		3.9%		-2.9%	-3.3%	-2.2%	41.8%		3.9%			0.5%	-6.4%			0.7%	-7.6%		-2.9%
	SALES		SALES		SALES	SALES	SALES	SALES		SALES	SALES	SALES	SALES	SALES	SALES	SALES	SALES	SALES	SALES	% of Sales
Calendar Year to date	3,007,895,707		157,706,515		262,889,074	5,344,451	60,641,645	60,899,188		189,562,085		36,799,703	67,929,211	4,724,320	228,519,920		26,386,597	28,136,339	4,137,434,753	100.0%
Fiscal Year to date 2013	874,492,895		46,960,678		77,406,466	1,455,517	16,573,526	16,419,366		31,437,643		7,290,355	20,288,527	1,369,493	98,056,828		9,388,498	28,136,339	1,229,276,130	100.0%