



WEEKLY SALES SUMMARY

Unaudited

[Week Ending: 12/17/2016](#)

Texas Lottery Commission
Fiscal Year to Date Sales Comparison
Unaudited

Through the Week Ending 12/17/2016 (16 Weeks)

Sales by Game	FY 2015 *	FY 2016 **	FY 2017	\$ Change		% Change	
				FY 2017 to FY 2015	FY 2017 to FY 2016	FY 2017 to FY 2015	FY 2017 to FY 2016
Scratch Tickets	\$ 1,001,375,647	\$ 1,034,886,328	\$ 1,083,925,191	\$ 82,549,544	\$ 49,038,863	8.2%	4.7%
Lotto Texas	36,683,257	38,114,188	32,557,063	-4,126,194	-5,557,125	-11.2%	-14.6%
Lotto Extra	5,537,385	6,442,305	6,236,516	699,131	-205,789	12.6%	-3.2%
Pick 3	76,187,065	76,202,352	72,473,818	-3,713,247	-3,728,534	-4.9%	-4.9%
Pick 3 Sum It Up	1,455,804	1,517,148	1,378,862	-76,942	-138,286	-5.3%	-9.1%
Cash Five	15,167,493	14,050,119	12,978,118	-2,189,375	-1,072,001	-14.4%	-7.6%
Texas Two Step	17,085,704	15,731,905	16,347,233	-738,471	615,328	-4.3%	3.9%
Mega Millions	48,280,968	37,963,436	30,329,022	-17,951,946	-7,634,414	-37.2%	-20.1%
Megaplier	10,975,274	9,507,621	8,370,215	-2,605,059	-1,137,406	-23.7%	-12.0%
Daily 4	25,688,864	26,252,754	26,971,821	1,282,958	719,068	5.0%	2.7%
Daily 4 Sum It Up	1,539,030	1,353,689	1,403,259	-135,771	49,570	-8.8%	3.7%
Powerball	51,342,503	61,266,257	68,398,135	17,055,632	7,131,878	33.2%	11.6%
Power Play	6,753,694	8,014,547	9,556,666	2,802,972	1,542,119	41.5%	19.2%
All or Nothing	11,987,134	9,493,154	8,600,768	-3,386,366	-892,386	-28.3%	-9.4%
Monopoly	1 2,656,700	-	-	-2,656,700	-	-100.0%	-
Texas Triple Chance	-	8,281,505	4,726,412	4,726,412	-3,555,093	-	-42.9%
Total	\$ 1,312,716,521	\$ 1,349,077,308	\$ 1,384,253,099	\$ 71,536,578	\$ 35,175,791	5.4%	2.6%

* 3 extra days

** 2 extra days

1 Monopoly sales were suspended after draw on 12/12/14

Texas Lottery Commission
Fiscal Year to Date Cumulative Average Sales Comparison
Unaudited

Through the Week Ending 12/17/2016 (16 Weeks)

Sales by Game	FY 2015	FY 2016	FY 2017
Scratch Tickets	\$ 9,021,402	\$ 9,408,058	\$ 10,036,344
Lotto Texas	330,480	346,493	301,454
Lotto Extra	49,886	58,566	57,746
Pick 3	686,370	692,749	671,054
Pick 3 Sum It Up	13,115	13,792	12,767
Cash Five	136,644	127,728	120,168
Texas Two Step	153,925	143,017	151,363
Mega Millions	434,964	345,122	280,824
Megaplier	98,876	86,433	77,502
Daily 4	231,431	238,661	249,739
Daily 4 Sum It Up	13,865	12,306	12,993
Powerball	462,545	556,966	633,316
Power Play	60,844	72,860	88,488
All or Nothing	107,992	86,301	79,637
Monopoly	** 48,304	-	-
Texas Triple Chance	- *	98,589	43,763
Total	\$ 11,850,644	\$ 12,287,642	\$ 12,817,158

thru 12/20/2014

111 days

**

55 days

*

thru 12/19/2015

110 days

84 days

thru 12/17/2016

108 days

Texas Lottery Commission
Fiscal Year Over Year Change in Sales
Unaudited
FY 2017 Compared to FY 2016

			SCRATCH TICKETS				DRAW GAMES				TOTAL SALES			
Week	FY 2017		FY 2016	Difference	% change - Cumulative Sales	FY 2017	FY 2016	Difference	% change - Cumulative Sales	FY 2017	FY 2016	Difference	% change - Cumulative Sales	
	Week	Ending												
1	9/3/2016 *		\$32,980,266	\$49,534,249	(\$16,553,983)	-33.4%	\$10,218,656	\$17,091,724	(\$6,873,068)	-40.2%	\$43,198,922	\$66,625,973	(\$23,427,051)	-35.2%
2	9/10/2016		\$65,952,418	\$61,566,291	\$4,386,127	7.1%	\$19,635,377	\$20,630,922	(\$995,545)	-4.8%	\$85,587,795	\$82,197,213	\$3,390,583	4.1%
3	9/17/2016		\$66,196,270	\$63,530,657	\$2,665,613	4.2%	\$20,915,290	\$20,327,253	\$588,037	2.9%	\$87,111,560	\$83,857,910	\$3,253,650	3.9%
4	9/24/2016		\$64,383,005	\$61,731,400	\$2,651,605	4.3%	\$17,451,165	\$22,252,290	(\$4,801,125)	-21.6%	\$81,834,170	\$83,983,690	(\$2,149,520)	-2.6%
5	10/1/2016		\$67,349,951	\$67,048,415	\$301,536	0.4%	\$17,519,852	\$25,436,791	(\$7,916,939)	-31.1%	\$84,869,803	\$92,485,206	(\$7,615,403)	-8.2%
6	10/8/2016		\$71,598,690	\$66,049,706	\$5,548,984	8.4%	\$18,211,107	\$18,138,977	\$72,130	0.4%	\$89,809,797	\$84,188,683	\$5,621,114	6.7%
7	10/15/2016		\$69,444,762	\$65,073,593	\$4,371,169	6.7%	\$18,075,261	\$17,776,414	\$298,847	1.7%	\$87,520,023	\$82,850,007	\$4,670,016	5.6%
8	10/22/2016		\$69,317,066	\$64,087,437	\$5,229,629	8.2%	\$18,422,336	\$18,450,464	(\$28,128)	-0.2%	\$87,739,402	\$82,537,901	\$5,201,501	6.3%
9	10/29/2016		\$69,729,599	\$66,025,374	\$3,704,225	5.6%	\$18,535,248	\$19,568,150	(\$1,032,902)	-5.3%	\$88,264,847	\$85,593,524	\$2,671,324	3.1%
10	11/5/2016		\$73,451,702	\$68,137,192	\$5,314,510	7.8%	\$20,151,939	\$20,398,351	(\$246,413)	-1.2%	\$93,603,641	\$88,535,543	\$5,068,098	5.7%
11	11/12/2016		\$70,998,320	\$65,449,428	\$5,548,892	8.5%	\$19,925,460	\$20,169,382	(\$243,923)	-1.2%	\$90,923,780	\$85,618,810	\$5,304,970	6.2%
12	11/19/2016		\$75,265,196	\$68,364,421	\$6,900,775	10.1%	\$21,424,637	\$17,174,606	\$4,250,031	24.7%	\$96,689,833	\$85,539,027	\$11,150,806	13.0%
13	11/26/2016		\$68,983,157	\$61,091,628	\$7,891,529	12.9%	\$24,223,331	\$17,168,993	\$7,054,338	41.1%	\$93,206,488	\$78,260,621	\$14,945,867	19.1%
14	12/3/2016		\$72,688,514	\$67,830,827	\$4,857,687	7.2%	\$17,653,328	\$19,252,418	(\$1,599,090)	-8.3%	\$90,341,842	\$87,083,245	\$3,258,597	3.7%
15	12/10/2016		\$71,676,549	\$68,324,452	\$3,352,097	4.9%	\$18,150,590	\$19,529,408	(\$1,378,819)	-7.1%	\$89,827,139	\$87,853,860	\$1,973,279	2.2%
16	12/17/2016		\$73,909,726	\$71,041,258	\$2,868,468	4.0%	\$19,814,333	\$20,824,840	(\$1,010,507)	-4.9%	\$93,724,059	\$91,866,098	\$1,857,962	2.0%
17	12/24/2016			\$78,125,965				\$22,586,417				\$100,712,382		
18	12/31/2016			\$76,712,975				\$27,972,880				\$104,685,855		
19	1/7/2017			\$77,136,541				\$127,289,478				\$204,426,019		
20	1/14/2017			\$73,858,865				\$140,104,126				\$213,962,991		
21	1/21/2017			\$70,665,700				\$20,781,745				\$91,447,445		
22	1/28/2017			\$71,051,685				\$20,433,401				\$91,485,086		
23	2/4/2017			\$78,458,428				\$21,274,800				\$99,733,228		
24	2/11/2017			\$80,754,850				\$21,391,919				\$102,146,769		
25	2/18/2017			\$80,078,271				\$21,911,382				\$101,989,653		
26	2/25/2017			\$78,832,217				\$22,823,086				\$101,655,303		
27	3/4/2017			\$80,019,524				\$23,146,906				\$103,166,430		
28	3/11/2017			\$78,524,214				\$19,311,625				\$97,835,839		
29	3/18/2017			\$75,446,960				\$18,001,000				\$93,447,960		
30	3/25/2017			\$75,293,759				\$18,553,964				\$93,847,723		
31	4/1/2017			\$79,316,221				\$19,482,563				\$98,798,784		
32	4/8/2017			\$74,560,898				\$20,100,629				\$94,661,527		
33	4/15/2017			\$74,056,586				\$20,677,413				\$94,733,999		
34	4/22/2017			\$73,110,080				\$20,313,339				\$93,423,419		
35	4/29/2017			\$73,448,019				\$22,666,626				\$96,114,645		
36	5/6/2017			\$77,593,399				\$33,262,968				\$110,856,367		
37	5/13/2017			\$75,263,676				\$20,250,149				\$95,513,825		
38	5/20/2017			\$74,274,808				\$19,605,983				\$93,880,791		
39	5/27/2017			\$71,562,728				\$20,150,232				\$91,712,960		
40	6/3/2017			\$73,085,109				\$21,067,550				\$94,152,659		
41	6/10/2017			\$70,593,768				\$21,389,794				\$91,983,562		
42	6/17/2017			\$69,501,864				\$22,402,713				\$91,904,577		

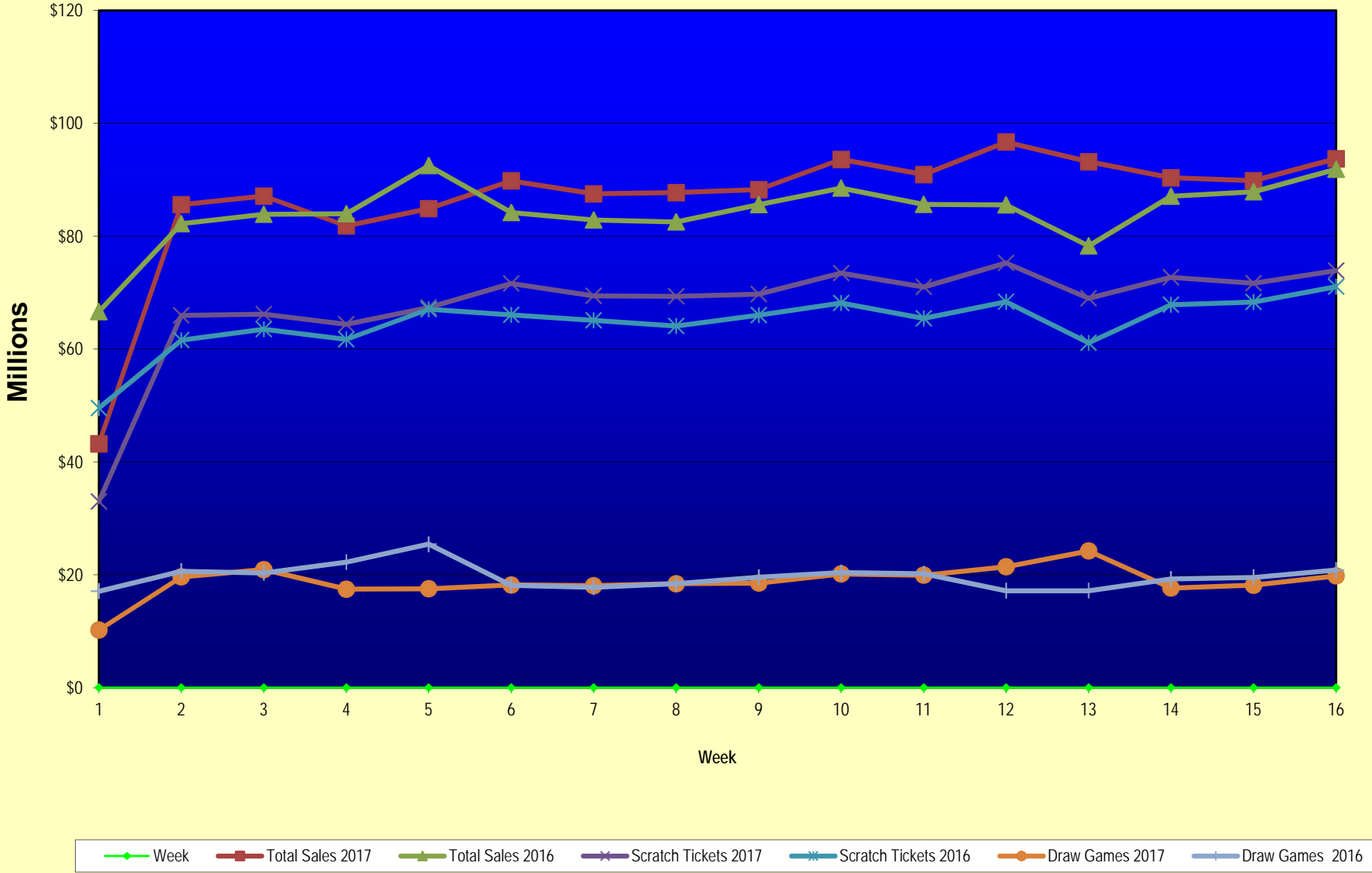
Texas Lottery Commission
Fiscal Year Over Year Change in Sales
Unaudited
FY 2017 Compared to FY 2016

			SCRATCH TICKETS				DRAW GAMES				TOTAL SALES			
FY 2017			FY 2017	FY 2016	Difference	% change - Cumulative Sales	FY 2017	FY 2016	Difference	% change - Cumulative Sales	FY 2017	FY 2016	Difference	% change - Cumulative Sales
Week	Week	Ending												
43	6/24/2017			\$69,243,660				\$24,290,311				\$93,533,971		
44	7/1/2017			\$70,782,313				\$29,331,406				\$100,113,719		
45	7/8/2017			\$67,636,625				\$38,673,314				\$106,309,939		
46	7/15/2017			\$68,064,720				\$21,311,938				\$89,376,658		
47	7/22/2017			\$69,509,821				\$21,982,689				\$91,492,510		
48	7/29/2017			\$64,486,970				\$30,699,953				\$95,186,923		
49	8/5/2017			\$69,206,183				\$18,277,075				\$87,483,258		
50	8/12/2017			\$67,165,060				\$18,101,640				\$85,266,700		
51	8/19/2017			\$69,067,938				\$18,981,681				\$88,049,619		
52	8/26/2017			\$67,821,162				\$19,606,571				\$87,427,733		
	8/31/2017 **			\$36,609,542				\$9,310,254				\$45,919,796		
Total thru Current Week			\$1,083,925,191	\$1,034,886,328	\$49,038,863	4.7%	\$300,327,908	\$314,190,980	(\$13,863,072)	-4.4%	\$1,384,253,099	\$1,349,077,308	\$35,175,791	2.6%
Fiscal Year Total			\$1,083,925,191	\$3,715,807,432			\$300,327,908	\$1,351,710,491			\$1,384,253,099	\$5,067,517,923		

* FY 17 includes 3 days; FY 16 includes 5 days

** FY 17 includes 5 days; FY 16 includes 4 days

Texas Lottery Commission Fiscal Year Over Year Change in Sales



Note: Week 1 is not a full week of sales as this report is prepared on a Fiscal Year basis.

Texas Lottery Commission
Scratch Tickets by Price Point
Sales, Prize Expense, Sales Contribution and Payout Percentage With Year Over Year Changes
Unaudited

Fiscal Year	Price Point	# of Active Games	FY Sales	% of Scratch Ticket Sales	Year over Year Change in Sales	FY Prize Expense	Year over Year Change in Prize Expense	FY Sales Contribution	Year over Year Change in Contribution	Average Prize Payout %	Year over Year Change in Payout %
2016	\$1.00	14	45,915,261	4.4%		27,770,003		18,145,258		60.5%	-0.1%
Through	\$2.00	26	104,583,630	10.1%		68,027,187		36,556,443		65.0%	-0.7%
12/19/2015	\$3.00	9	86,125,977	8.3%		56,676,512		29,449,465		65.8%	-0.2%
	\$5.00	41	333,584,100	32.2%		226,635,892		106,948,208		67.9%	0.0%
	\$10.00	14	206,049,000	19.9%		144,362,576		61,686,424		70.1%	-0.3%
	\$20.00	9	207,421,160	20.0%		155,446,528		51,974,632		74.9%	0.0%
	\$50.00	3	51,207,200	4.9%		39,825,869		11,381,331		77.8%	0.0%
Total		116	\$1,034,886,328			\$718,744,567		\$316,141,761		69.5%	0.0%
2017	\$1.00	17	43,552,745	4.0%		26,339,779		17,212,966		60.5%	0.4%
Through	\$2.00	23	90,666,306	8.4%		59,077,139		31,589,167		65.2%	0.0%
12/17/2016	\$3.00	8	75,027,375	6.9%		49,457,324		25,570,051		65.9%	0.0%
	\$5.00	41	342,135,325	31.6%		232,462,161		109,673,164		67.9%	0.0%
	\$10.00	16	226,224,860	20.9%		159,653,556		66,571,304		70.6%	0.6%
	\$20.00	11	251,250,680	23.2%		188,265,710		62,984,970		74.9%	0.0%
	\$50.00	4	55,067,900	5.1%		42,850,309		12,217,591		77.8%	0.0%
Total		120	\$1,083,925,191			\$758,105,979		\$325,819,212		69.9%	0.5%
Variance	\$1.00	3	-2,362,516		-5.1%	-1,430,224	-5.2%	-932,292	-5.1%	0.00%	
2017 to	\$2.00	-3	-13,917,324		-13.3%	-8,950,048	-13.2%	-4,967,276	-13.6%	0.11%	
2016	\$3.00	-1	-11,098,602		-12.9%	-7,219,188	-12.7%	-3,879,414	-13.2%	0.11%	
	\$5.00	0	8,551,225		2.6%	5,826,270	2.6%	2,724,955	2.5%	0.00%	
	\$10.00	2	20,175,860		9.8%	15,290,981	10.6%	4,884,879	7.9%	0.51%	
	\$20.00	2	43,829,520		21.1%	32,819,182	21.1%	11,010,338	21.2%	-0.01%	
	\$50.00	1	3,860,700		7.5%	3,024,440	7.6%	836,260	7.3%	0.04%	
Total		4	\$49,038,863		4.7%	\$39,361,413	5.5%	\$9,677,450	3.1%	0.49%	

Notes - Scratch Ticket Variances

Texas Lottery Commission
Scratch Tickets by Price Point
Sales, Prize Expense, Sales Contribution and Payout Percentage With Year Over Year Changes
Unaudited

		FY 2017		FY 2016		Difference
Sales	\$1 - \$5	\$551,381,751		\$570,208,968		-\$18,827,217
Prize Exp.	\$1 - \$5	\$367,336,404		\$379,109,594		-\$11,773,190
Sales Cont.	\$1 - \$5	\$184,045,347		\$191,099,374		-\$7,054,027
Prize Exp. %	\$1 - \$5	66.6%		66.5%		0.1%
		FY 2017		FY 2016		Difference
Sales	\$10 - \$50	\$532,543,440		\$464,677,360		\$67,866,080
Prize Exp.	\$10 - \$50	\$390,769,575		\$339,634,973		\$51,134,603
Sales Cont.	\$10 - \$50	\$141,773,865		\$125,042,387		\$16,731,477
Prize Exp. %	\$10 - \$50	73.4%		73.1%		0.3%
		FY 2017		FY 2016		Difference
Sales	Scratch	\$1,083,925,191		\$1,034,886,328		\$49,038,863
Prize Exp.	Scratch	\$758,105,979		\$718,744,567		\$39,361,413
Sales Cont.	Scratch	\$325,819,212		\$316,141,761		\$9,677,450
Prize Exp. %	Scratch	69.9%		69.5%		0.5%

		FY 2017		FY 2016		Difference
Sales	\$1 - \$10	\$777,606,611		\$776,257,968		\$1,348,643
Prize Exp.	\$1 - \$10	\$526,989,960		\$523,472,170		\$3,517,790
Sales Cont.	\$1 - \$10	\$250,616,651		\$252,785,798		-\$2,169,147
Prize Exp. %	\$1 - \$10	67.8%		67.4%		0.3%
		FY 2017		FY 2016		Difference
Sales	\$20 - \$50	\$306,318,580		\$258,628,360		\$47,690,220
Prize Exp.	\$20 - \$50	\$231,116,019		\$195,272,397		\$35,843,622
Sales Cont.	\$20 - \$50	\$75,202,561		\$63,355,963		\$11,846,598
Prize Exp. %	\$20 - \$50	75.4%		75.5%		-0.1%
		FY 2017		FY 2016		Difference
Sales	Scratch	\$1,083,925,191		\$1,034,886,328		\$49,038,863
Prize Exp.	Scratch	\$758,105,979		\$718,744,567		\$39,361,413
Sales Cont.	Scratch	\$325,819,212		\$316,141,761		\$9,677,450
Prize Exp. %	Scratch	69.9%		69.5%		0.5%

Texas Lottery Commission
Weekly Sales Summary
& Comparison to Previous Week
 Unaudited

	Week Ending 12/17/2016	% of Sales	Week Ending 12/10/2016	% of Sales	\$ change	% change
	<u>THIS WEEK</u>		<u>LAST WEEK</u>			
Total Sales	<u>\$93,724,059</u>		<u>\$89,827,139</u>		<u>\$3,896,921</u>	4.34%
Scratch Tickets	<u>\$73,909,726</u>	78.9%	<u>\$71,676,549</u>	79.8%	<u>\$2,233,177</u>	3.12%
Lotto	\$2,048,592	2.2%	\$2,006,953	2.2%	\$41,639	2.07%
Lotto Extra	\$398,632	0.4%	\$388,230	0.4%	\$10,402	2.68%
Pick 3	\$4,778,144	5.1%	\$4,748,391	5.3%	\$29,753	0.63%
Pick 3 Sum It Up	\$88,676	0.1%	\$88,668	0.1%	\$8	0.01%
Cash Five	\$854,061	0.9%	\$849,940	0.9%	\$4,121	0.48%
Texas Two Step	\$1,906,792	2.0%	\$1,337,879	1.5%	\$568,913	42.52%
Mega Millions	\$1,966,377	2.1%	\$1,830,451	2.0%	\$135,926	7.43%
Megaplier	\$539,946	0.6%	\$505,981	0.6%	\$33,965	6.71%
Daily 4	\$1,844,818	2.0%	\$1,812,622	2.0%	\$32,196	1.78%
Daily 4 Sum It Up	\$94,354	0.1%	\$88,690	0.1%	\$5,664	6.39%
Powerball	\$3,892,738	4.2%	\$3,176,570	3.5%	\$716,168	22.55%
Power Play	\$561,900	0.6%	\$475,269	0.5%	\$86,631	18.23%
All or Nothing	\$551,086	0.6%	\$551,930	0.6%	-\$844	-0.15%
Texas Triple Chance	\$288,218	0.3%	\$289,016	0.3%	-\$798	-0.28%
Total Draw Game Sales	<u>\$19,814,333</u>		<u>\$18,150,590</u>		<u>\$1,663,744</u>	9.17%

* Totals may not sum due to rounding.

Texas Lottery Commission
Weekly Sales Summary
Unaudited

SCRATCH TICKETS
TOP TEN SELLING GAMES

For the week ending: 12/17/2016

Rank	Price Point	Game	Sales (Millions)
1	\$ 10	HOLIDAY COUNTDOWN SUPER TICKET	\$ 4.020
2	\$ 10	\$1 MILLION HIGH ROLLER	\$ 3.879
3	\$ 20	100X THE CASH	\$ 3.206
4	\$ 50	\$7,500,000 ULTIMATE CASH	\$ 3.132
5	\$ 10	CASHWORD MULTIPLIER	\$ 3.063
6	\$ 20	SUPER BREAK THE BANK	\$ 2.854
7	\$ 5	GARLAND RICHES	\$ 2.715
8	\$ 20	WINNERS GALORE	\$ 2.594
9	\$ 10	\$200 MILLION PAYOUT	\$ 2.519
10	\$ 5	SUPER LOTERIA	\$ 2.334

Texas Lottery Commission
Prize Payout Tracking Report
Unaudited

Through the week ending: 12/17/2016

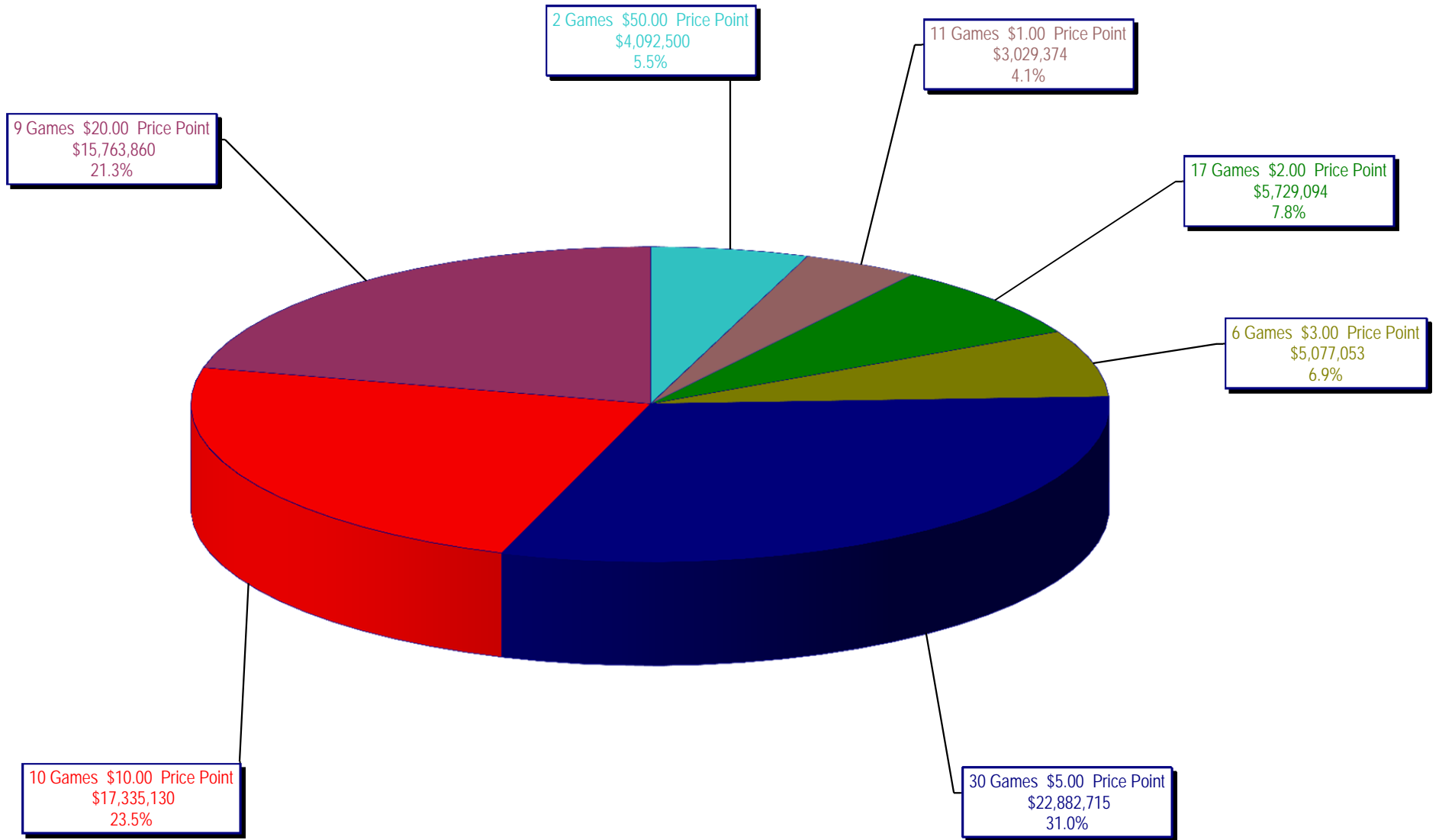
Draw Game Sales

		FY Sales Through Week Ending 12/17/2016		FY Prize Expense Through Week Ending 12/17/2016	Actual* Prize Payout	Base Payout (Prize Pool)
Lotto	\$	32,557,063	\$	16,285,583	50.02%	50.00%
Lotto Extra		6,236,516		3,352,898	53.76%	53.70%
Pick 3		72,473,818		35,967,950	49.63%	50.00%
Pick 3 Sum It Up		1,378,862		640,827	46.48%	50.00%
Cash Five		12,978,118		6,489,143	50.00%	50.00%
Texas Two Step		16,347,233		8,496,491	51.98%	50.00%
Mega Millions		30,329,022		15,496,969	51.10%	50.00%**
Megaplier		8,370,215		4,192,306	50.09%	N/A
Daily 4		26,971,821		17,761,600	65.85%	50.00%
Daily 4 Sum It Up		1,403,259		2,187,399	155.88%	50.00%
Powerball		68,398,135		34,212,853	50.02%	50.00%**
Power Play		9,556,666		4,781,522	50.03%	N/A
All or Nothing		8,600,768		4,571,398	53.15%	55.98%
Texas Triple Chance		4,726,412		2,453,290	51.91%	54.42%
Totals	\$	300,327,908	\$	156,890,228	52.24%	

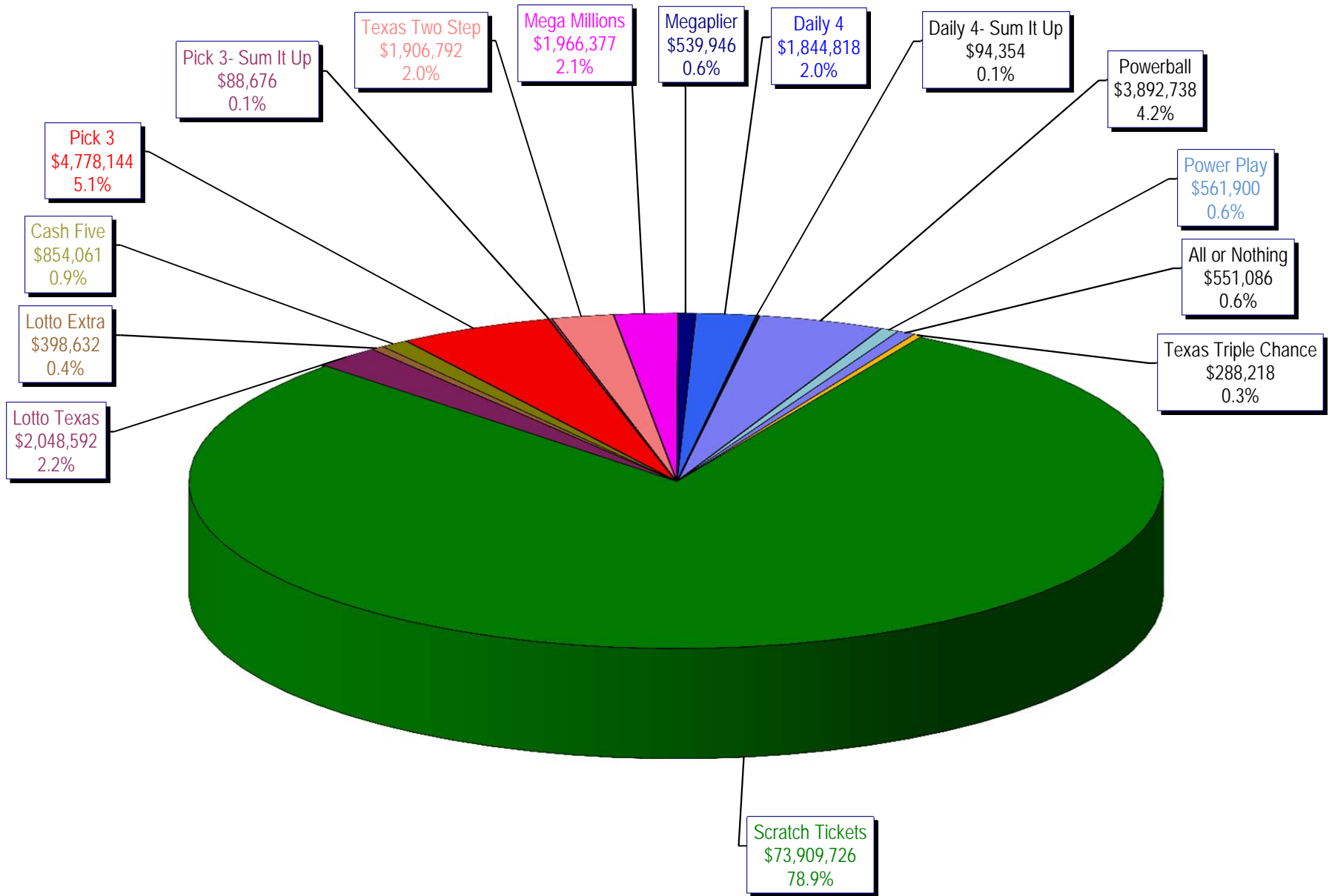
* Before Unclaimed Prizes

**Estimated; depends on # of guaranteed prizes won in Texas

Texas Lottery Commission
Scratch Ticket Sales
For the week ending 12/17/2016
(Unaudited)



Texas Lottery Commission
All Game Sales
For the week ending 12/17/2016
(Unaudited)



Texas Lottery Commission - Weekly Sales Summary for FY 2017 (Unaudited)

Week Ended	Scratch Tickets	New Games & Dates	Lotto Texas	Jackpot W S	Lotto Extra	Pick 3	Pick 3 Sum It Up	Cash Five	Texas Two Step	Jackpot M TH	Mega Millions	Jackpot T F	Megaplier	Daily 4	Daily 4 Sum It Up	Powerball	Jackpot W S	Power Play	All or Nothing	Texas Triple Chance	Total	Per Cap.
9/3/2016*	69,589,808	0	2,106,552	8.75 9.25	402,665	4,798,985	92,214	843,135	810,947	200 200	2,331,141	84 92	631,299	1,788,614	96,398	4,189,234	154 170	603,430	528,102	306,194	89,118,717	3.24
9/10/2016	65,952,418	1810 (\$1.N); 1809 (\$1.N); 1811 (\$5.N) - 9/06/16	2,095,828	9.75 10.25	399,944	4,590,651	86,697	818,614	862,148	225 275	2,490,552	101 111	655,066	1,647,119	87,455	4,473,836	186 205	628,810	506,718	291,940	85,587,795	3.12
9/17/2016	66,196,270	0	2,127,440	11 11.75	405,936	4,553,039	86,110	822,240	1,180,444	400 550	2,661,252	122 133	692,583	1,705,629	91,610	5,096,928	222 244	696,626	503,466	291,988	87,111,560	3.17
9/24/2016	64,383,005	1793 (\$2.N); 1782 (\$5.N); 1781 (\$10.N) - 9/19/16	2,141,721	12.25 13	404,127	4,551,066	83,958	811,604	1,465,789	700 900	1,733,288	15 20	489,347	1,680,793	90,386	2,790,676	40 50	429,512	503,041	275,858	81,834,170	2.98
10/1/2016	67,349,951	0	2,203,652	13.25 14	414,603	4,642,047	91,016	857,979	816,836	200 225	1,840,801	25 30	515,384	1,688,464	88,184	2,960,772	60 70	455,619	589,964	354,532	84,869,803	3.09
10/8/2016	71,598,690	1772 (\$1.N); 1770 (\$2.N); 1813 (\$5.N); 1779 (\$20.N) - 10/03/16	2,211,941	14.5 15.5	419,062	4,900,537	94,965	867,520	849,234	200 225	1,925,289	35 41	540,723	1,780,544	92,908	3,109,092	80 91	471,027	611,898	336,368	89,809,797	3.27
10/15/2016	69,444,762	0	2,207,002	16 16.75	416,802	4,549,017	89,171	836,548	1,024,493	300 425	1,780,458	49 15	496,567	1,679,519	87,007	3,499,528	107 122	510,617	577,343	321,190	87,520,023	3.19
10/22/2016	69,317,066	1814 (\$3.N); 1815 (\$5.N); 1832 (\$50.N) - 10/17/16	2,222,089	17 18	420,632	4,457,898	84,115	836,942	1,260,293	575 750	1,714,985	20 25	482,408	1,636,471	83,009	3,800,444	136 151	542,655	564,808	315,588	87,739,402	3.19
10/29/2016	69,729,599	0	2,269,908	18.5 19.25	430,487	4,511,234	86,114	833,125	779,029	200 200	1,781,093	30 35	500,203	1,711,520	88,083	4,097,116	164 180	575,614	565,102	306,622	88,264,847	3.21
11/5/2016	73,451,702	0	2,168,782	20 5	414,167	4,996,360	97,149	859,798	796,978	200 200	1,904,765	40 47	534,014	1,913,301	100,223	4,796,408	198 217	660,205	591,246	318,544	93,603,641	3.41
11/12/2016	70,998,320	1816 (\$2.N); 1808 (\$5.N); 1817 (\$5.N); 1818 (\$10.N) - 11/07/16	1,893,513	5.25 5.5	368,470	4,642,196	89,581	833,195	869,408	225 275	1,964,313	54 65	541,639	1,741,306	90,176	5,313,351	236 258	715,597	563,280	299,436	90,923,780	3.31
11/19/2016	75,265,196	1819 (\$1.N); 1820 (\$5.N); 1869 (\$10.N) - 11/16/16	1,924,291	5.75 6	376,977	4,595,331	87,939	830,211	1,078,765	400 550	2,072,033	73 82	567,597	1,715,227	91,335	6,391,094	293 320	836,372	557,058	300,408	96,689,833	3.52
11/26/2016	68,983,157	0	1,945,264	6.25 6.5	383,703	4,472,018	83,761	795,696	737,931	200 225	1,698,370	15 20	487,160	1,649,794	84,195	9,839,524	359 403	1,235,062	527,328	283,526	93,206,488	3.39
12/3/2016	72,688,514	0	1,989,472	6.75 7	386,573	4,901,443	91,365	857,900	1,002,319	275 375	1,761,923	25 30	499,193	1,823,528	94,278	2,932,322	40 54	444,551	569,036	299,426	90,341,842	3.29
12/10/2016	71,676,549	1807 (\$5.N); 1866 (\$10.N); 1822 (\$20.N) - 12/05/16	2,006,953	7.25 7.5	388,230	4,748,391	88,668	849,940	1,337,879	525 700	1,830,451	35 43	505,981	1,812,622	88,690	3,176,570	67 85	475,269	551,930	289,016	89,827,139	3.27
12/17/2016	73,909,726	0	2,048,592	7.75 8	398,632	4,778,144	88,676	854,061	1,906,792	900 1,125	1,966,377	51 59	539,946	1,844,818	94,354	3,892,738	100 119	561,900	551,086	288,218	93,724,059	3.41
weekly change	3.1%		2.1%		2.7%	0.6%	0.0%	0.5%	42.5%		7.4%		6.7%	1.8%	6.4%	22.5%		18.2%	-0.2%	-0.3%	4.3%	
	SALES		SALES		SALES	SALES	SALES	SALES	SALES		SALES	SALES	SALES	SALES	SALES	SALES	SALES	SALES	SALES	SALES	SALES	% of Sales
Calendar Year to date	3,632,172,835		110,832,893		20,682,726	243,096,566	4,902,042	43,455,096	53,312,748		144,102,252		37,070,711	88,085,935	4,734,943	447,910,274		52,829,258	28,531,024	18,710,665	4,930,429,968	100.0%
Fiscal Year to date 2017	1,083,925,191		32,557,063		6,236,516	72,473,818	1,378,862	12,978,118	16,347,233		30,329,022		8,370,215	26,971,821	1,403,259	68,398,135		9,556,666	8,600,768	4,726,412	1,384,253,099	100.0%
*Full week includes 4 days from FY16																						