



WEEKLY SALES SUMMARY

Unaudited

Week Ending: 12/20/08

Texas Lottery Commission
Fiscal Year to Date Sales Comparison
Unaudited

Through the week ending 12/20/2008 (16 weeks)

Sales by Game	FY 2007 *	FY 2008 **	FY 2009	\$ Change		% Change	
				FY 2009 to FY 2007	FY 2009 to FY 2008	FY 2009 to FY 2007	FY 2009 to FY 2008
Instants	\$ 862,938,424	\$ 850,665,928	\$ 811,269,701	\$ -51,668,723	\$ -39,396,227	-6.0%	-4.6%
Lotto Texas	62,819,812	66,390,402	54,703,840	-8,115,972	-11,686,562	-12.9%	-17.6%
Pick 3	96,267,127	87,097,801	83,931,426	-12,335,701	-3,166,375	-12.8%	-3.6%
Pick 3 Sum It Up	-	1,219,578	1,780,009	1,780,009	560,431	-	-
Cash 5	27,230,920	23,985,009	21,477,350	-5,753,570	-2,507,659	-21.1%	-10.5%
Texas Two Step	18,228,687	12,949,593	13,666,513	-4,562,174	716,920	-25.0%	5.5%
Mega Millions	43,187,328	46,010,191	53,320,716	10,133,388	7,310,525	23.5%	15.9%
Megaplier	10,696,563	11,403,675	12,543,857	1,847,294	1,140,182	17.3%	10.0%
Daily 4	-	12,431,865	12,704,734	12,704,734	272,870	-	2.2%
Daily 4 Sum It Up	-	3,392,955	1,646,371	1,646,371	-1,746,585	-	-51.5%
Total	\$ 1,121,368,861	\$ 1,115,546,996	\$ 1,067,044,516	\$ -54,324,345	\$ -48,502,481	-4.8%	-4.3%

* 3 extra days in 2007 ** 2 extra days in 2008

Texas Lottery Commission
Fiscal Year Over Year Change in Sales
Unaudited
FY 2009 Compared to FY 2008

Week	FY 2009 Week Ending	INSTANT TICKETS				ON-LINE GAMES				TOTAL SALES			
		FY 2009	FY 2008	Difference	% change - Cumulative Sales	FY 2009	FY 2008	Difference	% change - Cumulative Sales	FY 2009	FY 2008	Difference	% change - Cumulative Sales
1	9/6/2008**	\$44,890,104	\$62,376,229	(\$17,486,125)	-28.0%	\$14,722,011	\$19,372,224	(\$4,650,213)	-24.0%	\$59,612,115	\$81,748,453	(\$22,136,338)	-27.1%
2	9/13/2008	\$46,309,551	\$52,458,866	(\$6,149,315)	-20.6%	\$13,704,860	\$16,926,163	(\$3,221,303)	-21.7%	\$60,014,411	\$69,385,029	(\$9,370,618)	-20.8%
3	9/20/2008	\$42,923,171	\$49,998,934	(\$7,075,763)	-18.6%	\$12,291,263	\$15,792,283	(\$3,501,020)	-21.8%	\$55,214,434	\$65,791,217	(\$10,576,783)	-19.4%
4	9/27/2008	\$47,042,801	\$49,894,175	(\$2,851,374)	-15.6%	\$14,222,339	\$14,800,514	(\$578,175)	-17.9%	\$61,265,140	\$64,694,689	(\$3,429,549)	-16.2%
5	10/4/2008	\$50,747,162	\$53,486,863	(\$2,739,701)	-13.5%	\$15,784,472	\$16,618,430	(\$833,958)	-15.3%	\$66,531,634	\$70,105,293	(\$3,573,659)	-14.0%
6	10/11/2008	\$49,763,789	\$50,918,020	(\$1,154,231)	-11.7%	\$15,622,498	\$15,601,410	\$21,088	-12.9%	\$65,386,287	\$66,519,430	(\$1,133,143)	-12.0%
7	10/18/2008	\$49,299,053	\$50,532,253	(\$1,233,200)	-10.5%	\$15,167,940	\$15,682,666	(\$514,726)	-11.6%	\$64,466,993	\$66,214,919	(\$1,747,926)	-10.7%
8	10/25/2008	\$49,977,581	\$50,347,450	(\$369,869)	-9.3%	\$14,525,843	\$15,586,516	(\$1,060,673)	-11.0%	\$64,503,424	\$65,933,966	(\$1,430,542)	-9.7%
9	11/1/2008	\$50,346,542	\$53,953,733	(\$3,607,191)	-9.0%	\$14,838,845	\$16,775,983	(\$1,937,139)	-11.1%	\$65,185,387	\$70,729,716	(\$5,544,330)	-9.5%
10	11/8/2008	\$54,860,087	\$53,635,090	\$1,224,997	-7.9%	\$16,057,069	\$15,912,791	\$144,278	-9.9%	\$70,917,156	\$69,547,881	\$1,369,275	-8.3%
11	11/15/2008	\$53,484,812	\$51,254,401	\$2,230,411	-6.8%	\$15,829,819	\$15,797,076	\$32,744	-9.0%	\$69,314,631	\$67,051,477	\$2,263,155	-7.3%
12	11/22/2008	\$52,806,511	\$50,897,817	\$1,908,694	-5.9%	\$16,460,748	\$15,801,720	\$659,028	-7.9%	\$69,267,259	\$66,699,537	\$2,567,722	-6.4%
13	11/29/2008	\$52,199,741	\$53,913,115	(\$1,713,374)	-5.7%	\$17,397,576	\$17,055,505	\$342,072	-7.1%	\$69,597,317	\$70,968,620	(\$1,371,303)	-6.0%
14	12/6/2008	\$56,731,851	\$55,702,697	\$1,029,154	-5.1%	\$20,363,789	\$17,900,717	\$2,463,073	-5.5%	\$77,095,640	\$73,603,414	\$3,492,227	-5.2%
15	12/13/2008	\$54,109,617	\$53,703,516	\$406,101	-4.7%	\$22,952,228	\$17,820,841	\$5,131,387	-3.0%	\$77,061,845	\$71,524,357	\$5,537,488	-4.3%
16	12/20/2008	\$55,777,328	\$57,592,769	(\$1,815,441)	-4.6%	\$15,833,517	\$17,436,233	(\$1,602,716)	-3.4%	\$71,610,845	\$75,029,002	(\$3,418,157)	-4.3%
17	12/27/2008		\$57,696,003				\$14,743,680				\$72,439,683		
18	1/3/2009		\$57,935,952				\$15,704,450				\$73,640,402		
19	1/10/2009		\$55,360,542				\$15,691,540				\$71,052,082		
20	1/17/2009		\$54,920,166				\$16,259,669				\$71,179,835		
21	1/24/2009		\$54,439,890				\$16,691,724				\$71,131,614		
22	1/31/2009		\$57,464,382				\$17,968,227				\$75,432,609		
23	2/7/2009		\$60,715,019				\$20,097,338				\$80,812,357		
24	2/14/2009		\$57,093,143				\$22,179,908				\$79,273,051		
25	2/21/2009		\$57,627,047				\$27,230,539				\$84,857,586		
26	2/28/2009		\$55,591,667				\$17,016,118				\$72,607,785		
27	3/7/2009		\$56,837,481				\$16,690,193				\$73,527,674		
28	3/14/2009		\$54,587,112				\$16,448,165				\$71,035,277		
29	3/21/2009		\$53,098,937				\$16,639,184				\$69,738,121		
30	3/28/2009		\$53,933,689				\$17,698,625				\$71,632,314		
31	4/4/2009		\$57,598,982				\$17,665,411				\$75,264,393		
32	4/11/2009		\$53,954,185				\$15,860,784				\$69,814,969		
33	4/18/2009		\$53,946,736				\$16,452,676				\$70,399,412		
34	4/25/2009		\$51,533,006				\$16,873,949				\$68,406,955		
35	5/2/2009		\$53,250,568				\$18,202,103				\$71,452,671		
36	5/9/2009		\$54,060,849				\$18,422,562				\$72,483,411		
37	5/16/2009		\$54,010,641				\$20,728,360				\$74,739,001		
38	5/23/2009		\$50,377,032				\$15,461,384				\$65,838,416		
39	5/30/2009		\$49,545,080				\$15,175,370				\$64,720,450		
40	6/6/2009		\$53,702,986				\$15,982,166				\$69,685,152		

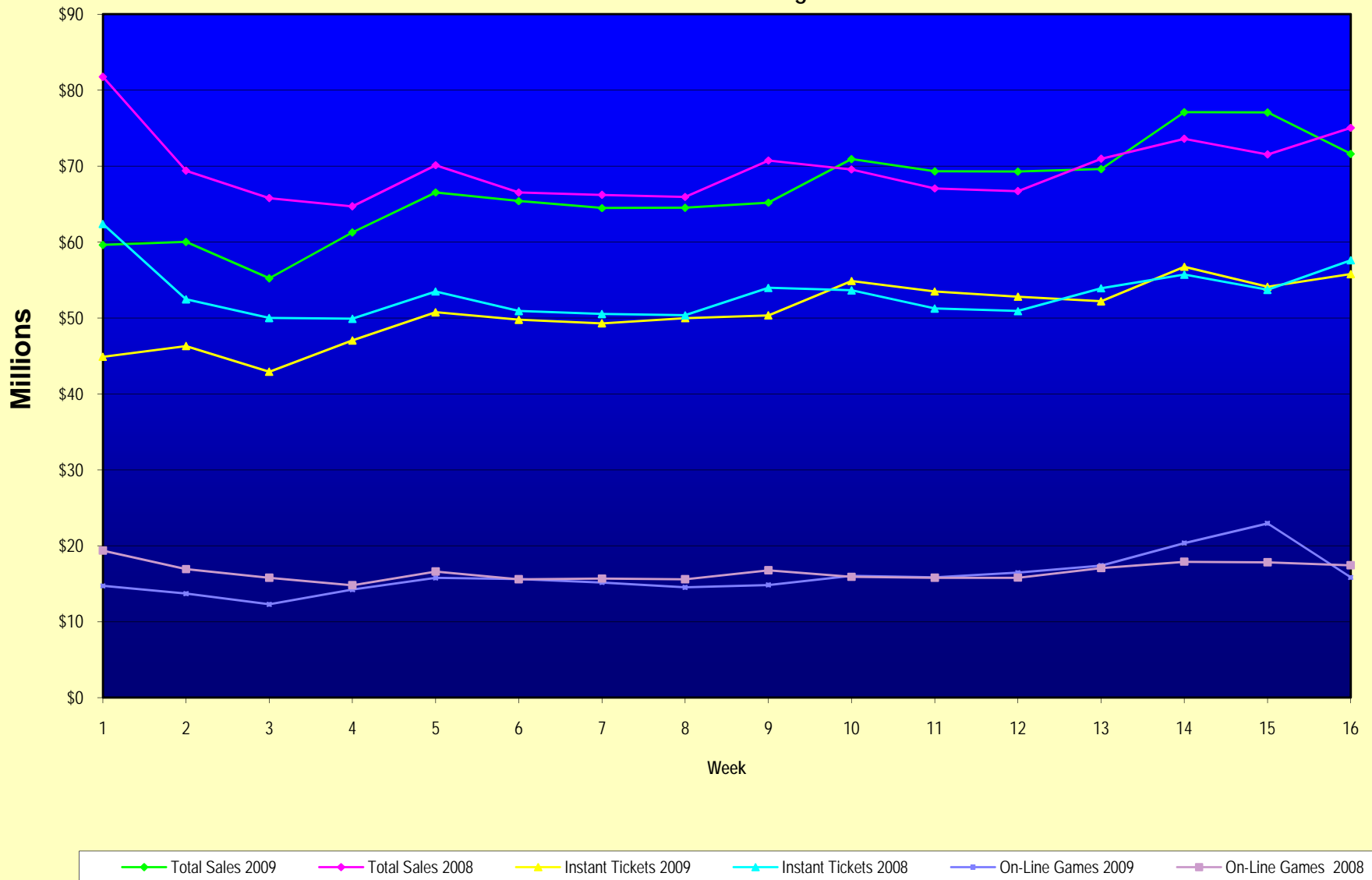
Note: Week 1 is not a full week of sales as this report is prepared on a Fiscal Year basis.

Texas Lottery Commission
Fiscal Year Over Year Change in Sales
Unaudited
FY 2009 Compared to FY 2008

Week	FY 2009 Week Ending	INSTANT TICKETS				ON-LINE GAMES				TOTAL SALES			
		FY 2009	FY 2008	Difference	% change - Cumulative Sales	FY 2009	FY 2008	Difference	% change - Cumulative Sales	FY 2009	FY 2008	Difference	% change - Cumulative Sales
41	6/13/2009		\$51,171,483				\$16,589,087				\$67,760,570		
42	6/20/2009		\$50,650,362				\$15,728,484				\$66,378,846		
43	6/27/2009		\$49,258,266				\$15,250,905				\$64,509,171		
44	7/4/2009		\$53,393,355				\$16,270,619				\$69,663,974		
45	7/11/2009		\$53,127,756				\$16,914,922				\$70,042,678		
46	7/18/2009		\$51,593,146				\$17,752,738				\$69,345,884		
47	7/25/2009		\$49,902,181				\$16,706,145				\$66,608,326		
48	8/1/2009		\$49,605,420				\$16,254,383				\$65,859,803		
49	8/8/2009		\$50,961,907				\$16,770,496				\$67,732,403		
50	8/15/2009		\$49,452,511				\$16,749,487				\$66,201,998		
51	8/22/2009		\$49,249,518				\$17,286,302				\$66,535,820		
52	8/29/2009		\$49,468,928				\$18,109,997				\$67,578,925		
53	9/5/2009		\$6,054,239				\$493,109				\$6,547,348		
Total thru Current Week		\$811,269,701	\$850,665,928	(\$39,396,227)	-4.6%	\$255,774,815	\$264,881,068	(\$9,106,254)	-3.4%	\$1,067,044,516	\$1,115,546,996	(\$48,502,481)	-4.3%
Fiscal Year Total		\$811,269,701	\$2,783,836,095			\$255,774,815	\$887,641,858			\$1,067,044,516	\$3,671,477,953		

** FY 2009 includes 6 days; FY 2008 includes 8 days
FY 2009 average daily sales are \$9,242,258. Two days at average daily sales are \$18,484,516.

Texas Lottery Commission Fiscal Year Over Year Change in Sales



Note: Week 1 is not a full week of sales as this report is prepared on a Fiscal Year basis.

Texas Lottery Commission
Instant Tickets by Price Point
Sales, Prize Expense, Sales Contribution and Payout Percentage With Year Over Year Changes
Unaudited

Fiscal Year	Price Point	# of Active Games	FY Sales	% of Instant Ticket Sales	Year over Year Change in Sales	FY Prize Expense	Year over Year Change in Prize Expense	FY Sales Contribution	Year over Year Change in Contribution	Average Prize Payout %	Year over Year Change in Payout %
2008	\$1.00	37	73,533,020	8.6%		44,186,518		29,346,502		60.1%	
thru	\$2.00	41	143,132,584	16.8%		93,054,636		50,077,948		65.0%	
12/22/2007	\$3.00	12	65,243,703	7.7%		43,005,872		22,237,831		65.9%	
	\$5.00	34	225,886,725	26.6%		153,174,442		72,712,283		67.8%	
	\$7.00	10	61,525,170	7.2%		41,832,111		19,693,059		68.0%	
	\$10.00	16	131,056,036	15.4%		91,748,764		39,307,272		70.0%	
	\$20.00	6	52,947,540	6.2%		38,072,425		14,875,115		71.9%	
	\$25.00	2	34,899,950	4.1%		25,337,796		9,562,154		72.6%	
	\$30.00	2	10,084,800	1.2%		7,290,897		2,793,903		72.3%	
	\$50.00	2	52,356,400	6.2%		37,768,978		14,587,422		72.1%	
Total		162	\$850,665,928			\$575,472,440		\$275,193,488		67.6%	
2009	\$1.00	34	69,072,018	8.5%		41,601,136		27,470,882		60.2%	0.1%
thru	\$2.00	29	138,938,196	17.1%		90,095,370		48,842,826		64.8%	-0.2%
12/20/2008	\$3.00	13	89,363,454	11.0%		58,750,878		30,612,576		65.7%	-0.2%
	\$5.00	32	246,643,374	30.4%		167,751,509		78,891,865		68.0%	0.2%
	\$7.00	6	35,294,399	4.4%		24,007,098		11,287,301		68.0%	0.0%
	\$10.00	14	109,459,710	13.5%		76,608,335		32,851,375		70.0%	0.0%
	\$20.00	7	78,515,780	9.7%		56,352,902		22,162,878		71.8%	-0.1%
	\$25.00	1	2,377,500	0.3%		1,729,266		648,234		72.7%	0.1%
	\$30.00	3	7,358,070	0.9%		5,332,523		2,025,547		72.5%	0.2%
	\$50.00	3	34,247,200	4.2%		24,762,776		9,484,424		72.3%	0.2%
Total		142	\$811,269,701			\$546,991,792		\$264,277,909		67.4%	-0.2%
Variance	\$1.00	-3	-4,461,002		-6.1%	-2,585,382	-5.9%	-1,875,620	-6.4%	0.14%	
2009 to	\$2.00	-12	-4,194,388		-2.9%	-2,959,266	-3.2%	-1,235,122	-2.5%	-0.17%	
2008	\$3.00	1	24,119,751		37.0%	15,745,005	36.6%	8,374,746	37.7%	-0.17%	
	\$5.00	-2	20,756,649		9.2%	14,577,067	9.5%	6,179,582	8.5%	0.20%	
	\$7.00	-4	-26,230,771		-42.6%	-17,825,013	-42.6%	-8,405,758	-42.7%	0.03%	
	\$10.00	-2	-21,596,326		-16.5%	-15,140,429	-16.5%	-6,455,897	-16.4%	-0.02%	
	\$20.00	1	25,568,240		48.3%	18,280,477	48.0%	7,287,763	49.0%	-0.13%	
	\$25.00	-1	-32,522,450		-93.2%	-23,608,531	-93.2%	-8,913,919	-93.2%	0.13%	
	\$30.00	1	-2,726,730		-27.0%	-1,958,374	-26.9%	-768,356	-27.5%	0.18%	
	\$50.00	1	-18,109,200		-34.6%	-13,006,202	-34.4%	-5,102,998	-35.0%	0.17%	
Total		-20	-\$39,396,227		-4.6%	-\$28,480,647	-4.9%	-\$10,915,580	-4.0%	-0.23%	

Texas Lottery Commission
Instant Tickets by Price Point
Sales, Prize Expense, Sales Contribution and Payout Percentage With Year Over Year Changes
Unaudited

Notes - Instant Ticket Variances

		FY 2009		FY 2008		Difference
Sales	\$1 - \$7		\$579,311,441		\$569,321,202	\$9,990,239
Prize Exp.	\$1 - \$7		\$382,205,991		\$375,253,579	\$6,952,411
Sales Cont.	\$1 - \$7		\$197,105,450		\$194,067,623	\$3,037,828
Prize Exp. %	\$1 - \$7		66.0%		65.9%	0.1%
		FY 2009		FY 2008		Difference
Sales	\$10 - \$50		\$231,958,260		\$281,344,726	-\$49,386,466
Prize Exp.	\$10 - \$50		\$164,785,802		\$200,218,861	-\$35,433,059
Sales Cont.	\$10 - \$50		\$67,172,458		\$81,125,866	-\$13,953,407
Prize Exp. %	\$10 - \$50		71.0%		71.2%	-0.1%
		FY 2009		FY 2008		Difference
Sales	Instant		\$811,269,701		\$850,665,928	-\$39,396,227
Prize Exp.	Instant		\$546,991,792		\$575,472,440	-\$28,480,647
Sales Cont.	Instant		\$264,277,909		\$275,193,488	-\$10,915,580
Prize Exp. %	Instant		67.4%		67.6%	-0.2%

		FY 2009		FY 2008		Difference
Sales	\$1 - \$10		\$688,771,151		\$700,377,238	-\$11,606,087
Prize Exp.	\$1 - \$10		\$458,814,326		\$467,002,344	-\$8,188,018
Sales Cont.	\$1 - \$10		\$229,956,825		\$233,374,894	-\$3,418,069
Prize Exp. %	\$1 - \$10		66.6%		66.7%	-0.1%
		FY 2009		FY 2008		Difference
Sales	\$20 - \$50		\$122,498,550		\$150,288,690	-\$27,790,140
Prize Exp.	\$20 - \$50		\$88,177,466		\$108,470,096	-\$20,292,630
Sales Cont.	\$20 - \$50		\$34,321,084		\$41,818,594	-\$7,497,510
Prize Exp. %	\$20 - \$50		72.0%		72.2%	-0.2%
		FY 2009		FY 2008		Difference
Sales	Instant		\$811,269,701		\$850,665,928	-\$39,396,227
Prize Exp.	Instant		\$546,991,792		\$575,472,440	-\$28,480,647
Sales Cont.	Instant		\$264,277,909		\$275,193,488	-\$10,915,580
Prize Exp. %	Instant		67.4%		67.6%	-0.2%

Texas Lottery Commission
Weekly Sales Summary
& Comparison to Previous Week
 Unaudited

	Week Ending 12/20/08		Week Ending 12/13/08			
	<u>THIS WEEK</u>	% of Sales	<u>LAST WEEK</u>	% of Sales	<u>\$ change</u>	<u>% change</u>
Total Sales	<u>\$71,610,845</u>		<u>\$77,061,845</u>		<u>-\$5,451,000</u>	-7.07%
Instant Tickets	<u>\$55,777,328</u>	77.9%	<u>\$54,109,617</u>	70.2%	<u>\$1,667,711</u>	3.08%
Lotto Texas	\$3,432,340	4.8%	\$3,315,658	4.3%	\$116,682	3.52%
Pick 3	\$5,741,120	8.0%	\$5,580,770	7.2%	\$160,350	2.87%
Pick 3 Sum It Up	\$116,076	0.2%	\$114,296	0.1%	\$1,780	1.56%
Cash 5	\$1,401,805	2.0%	\$1,384,858	1.8%	\$16,947	1.22%
Texas Two Step	\$741,945	1.0%	\$766,893	1.0%	-\$24,948	-3.25%
Mega Millions	\$2,736,234	3.8%	\$9,150,536	11.9%	-\$6,414,302	-70.10%
Megaplier	\$687,875	1.0%	\$1,691,121	2.2%	-\$1,003,246	-59.32%
Daily 4	\$871,580	1.2%	\$846,177	1.1%	\$25,403	3.00%
Daily 4 Sum It Up	<u>\$104,543</u>	0.1%	<u>\$101,920</u>	0.1%	<u>\$2,624</u>	2.57%
Total Online Sales	<u>\$15,833,517</u>		<u>\$22,952,228</u>		<u>-\$7,118,711</u>	-31.02%

* Totals may not sum due to rounding.

Texas Lottery Commission
Weekly Sales Summary
Unaudited

INSTANT TICKETS
TOP TEN SELLING GAMES

For the Week Ending : 12/20/08

Rank	Price Point	Game	Sales (Millions)
1	\$ 10	JINGLE JUMBO BUCKS	\$ 3.885
2	\$ 5	HOLIDAY TREASURES	\$ 3.733
3	\$ 5	MERRY MONEY	\$ 2.686
4	\$ 20	TEXAS \$50 MILLION CLUB	\$ 2.547
5	\$ 5	FANTASTIC 5'S	\$ 2.227
6	\$ 7	SIZZLIN' RED 7'S	\$ 2.224
7	\$ 3	BONUS CASHWORD	\$ 1.918
8	\$ 10	SET FOR LIFE	\$ 1.827
9	\$ 5	GIANT JUMBO BUCKS II	\$ 1.770
10	\$ 50	\$130,000,000 PLATINUM PAYOUT	\$ 1.721

Texas Lottery Commission
Prize Payout Tracking Report
Unaudited

Through Week Ending 12/20/08

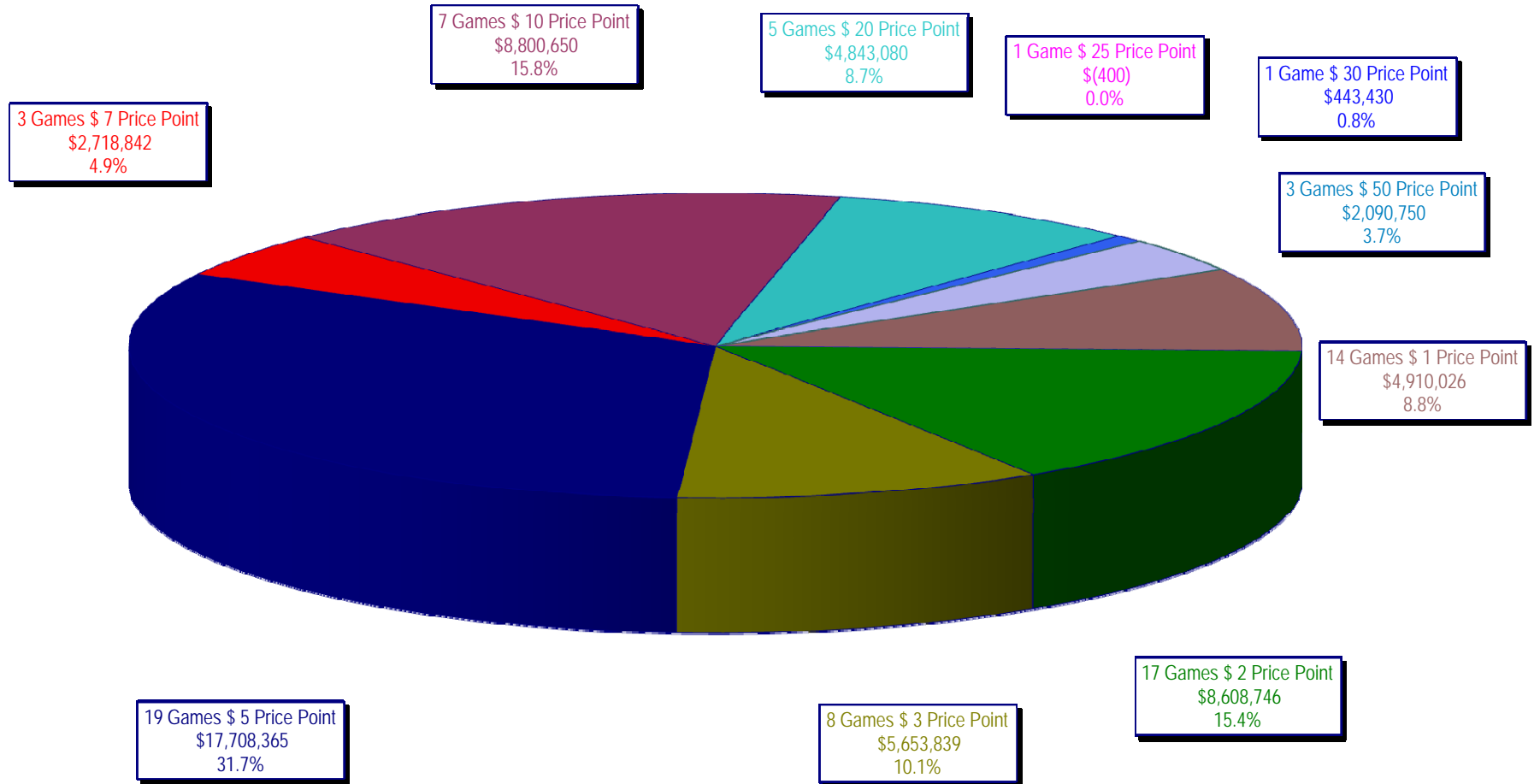
On-Line Sales

		FY Sales Through Week Ending 12/20/2008		FY Prize Expense Through Week Ending 12/20/2008	Actual* Prize Payout	Base Payout (Prize Pool)
Lotto	\$	54,703,840	\$	27,448,156	50.18%	50.00%
Pick 3		83,931,426		41,116,940	48.99%	50.00%
Pick 3 Sum It Up		1,780,009		802,556	45.09%	50.00%
Cash 5		21,477,350		10,836,762	50.46%	50.00%
Texas Two-Step		13,666,513		7,267,584	53.18%	50.00%
Mega Millions		53,320,716		25,705,693	48.21%	50.00%**
Megaplier		12,543,857		4,756,360	37.92%	N/A
Daily 4		12,704,734		5,628,100	44.30%	50.00%
Daily 4-Sum It Up		1,646,371		610,838	37.10%	50.00%
Totals	\$	255,774,815	\$	124,172,989	48.55%	

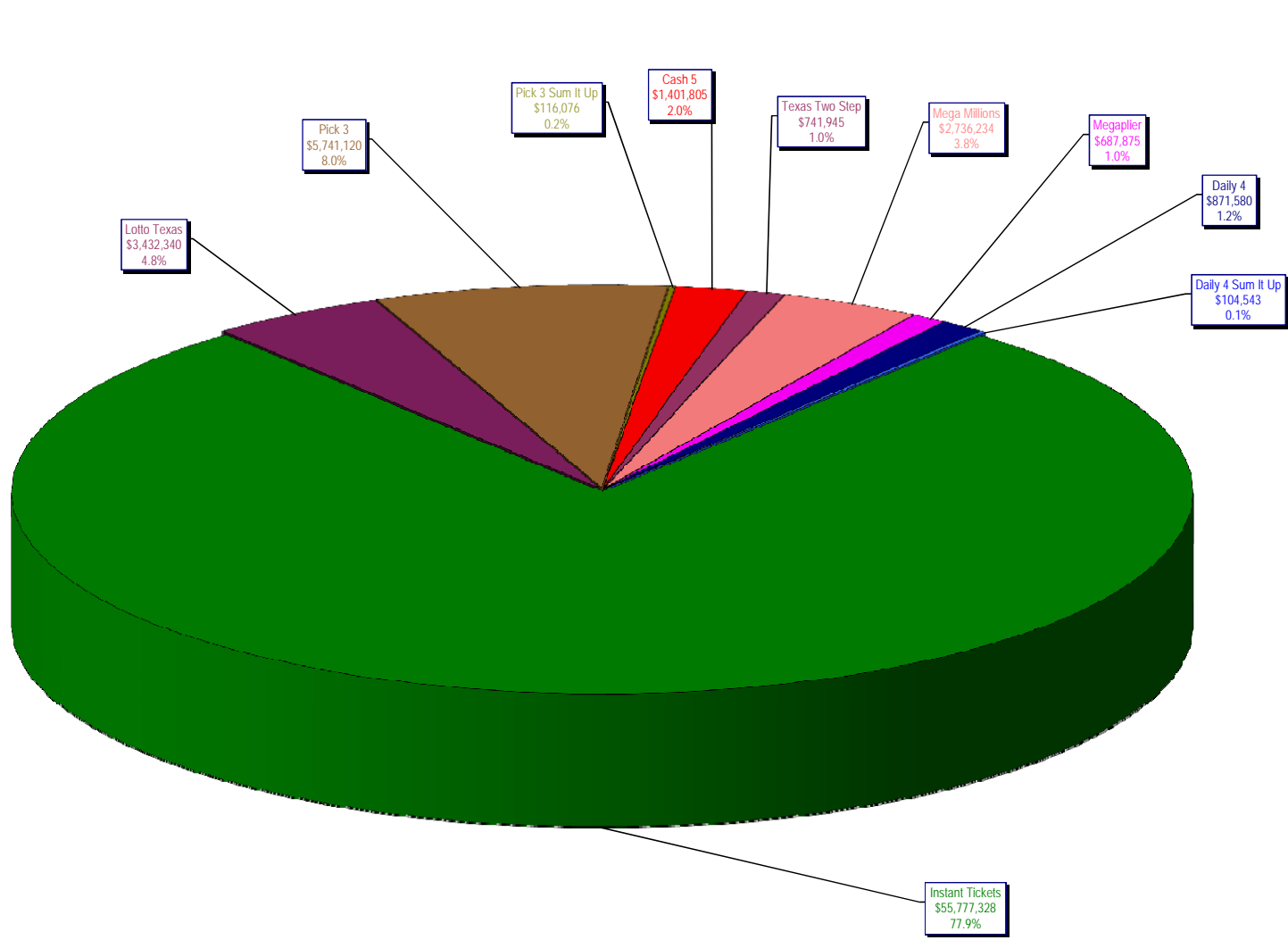
* Before Unclaimed Prizes

** Estimated; depends on # of guaranteed prizes won in Texas

Texas Lottery Commission
Instant Ticket Sales
For the Week Ending 12/20/2008
(Unaudited)



Texas Lottery Commission
All Game Sales
For the Week Ending 12/20/2008
(Unaudited)



* Totals may not sum due to rounding.

Texas Lottery Commission - Weekly Sales Summary for FY 2008 (Unaudited)

Week Ended	Instant Games	New Games & Dates	Lotto Texas	Jackpot W	S	Pick 3	Pick 3 Sum It Up	Cash 5	Texas Two Step	Jackpot M/T	TH/F	Mega Millions	Jackpot T	F	Megaplier	Daily 4	Daily 4 Sum It Up	Total	Per Cap.																				
9/6/2008	50,944,343.00	1108 (\$2,N), 1088 (\$3, N) - 9/01/08	3,378,718.00	5	6	5,436,414.00	122,123.00	1,396,622.00	890,346.00	350	450	2,445,490.00	12	16	649,090.00	786,482.50	109,834.00	66,159,462.50	2.77																				
9/13/2008	46,309,551.00	1109 (\$1,N), 1098 (\$5, N) - 9/08/08	3,020,089.00	7	8	4,705,585.50	105,899.00	1,279,412.00	856,199.00	600	200	2,327,214.00	24	12	617,672.00	696,633.00	96,156.50	60,014,411.00	2.51																				
9/20/2008	42,923,171.00	0	3,054,093.00	9	10	4,121,734.50	90,718.00	1,155,350.00	637,792.00	225	250	1,978,127.00	15	12	540,225.00	627,210.00	86,013.50	55,214,434.00	2.31																				
9/27/2008	47,042,801.00	1111 (\$2,N), 1099 (\$5, N) - 9/22/08	3,427,671.00	11	12	4,821,563.00	103,189.50	1,288,062.00	834,307.00	275	425	2,322,862.00	16	24	617,085.00	709,741.50	97,858.00	61,265,140.00	2.56																				
10/4/2008	50,747,162.00	1113 (\$1,N) 9/29/08	3,675,683.00	13	14	5,305,711.00	116,332.50	1,369,040.00	1,074,874.00	525	650	2,671,927.00	32	42	693,845.00	770,782.50	106,277.00	66,531,634.00	2.78																				
10/11/2008	49,763,789.00	0	3,732,365.00	15	16	5,287,094.00	114,665.50	1,370,334.00	1,305,250.00	800	975	2,306,070.00	12	16	622,120.00	778,204.00	106,395.00	65,386,286.50	2.74																				
10/18/2008	49,299,053.00	1117 (\$3,N), 1118 (\$20,N) - 10/13/08	3,780,438.00	17	18	5,149,258.00	109,530.00	1,355,601.00	741,849.00	200	200	2,500,644.00	23	32	652,198.00	776,366.00	102,056.00	64,466,993.00	2.70																				
10/25/2008	49,977,581.00	1119 (\$1,N), 1120 (\$5,N) - 10/20/08	3,210,762.00	4	5	5,099,671.00	107,104.50	1,339,079.00	789,649.00	225	275	2,456,965.00	42	12	641,206.00	778,434.00	102,972.50	64,503,424.00	2.70																				
11/1/2008	50,346,542.00	1121 (\$2,N), 1122 (\$10,N) - 10/27/08	3,325,641.00	6	7	5,234,124.00	109,983.00	1,339,046.00	946,035.00	375	475	2,347,596.00	16	23	626,235.00	805,572.00	104,612.50	65,185,386.50	2.73																				
11/8/2008	54,860,087.00	1123 (\$3,N), 1124 (\$7,N) - 11/03/08; 1109 (\$3,N) - 11/05/08; 1063 (\$3,N) - 11/07/08	3,290,417.00	4	5	5,686,701.00	118,495.00	1,397,985.00	1,158,101.00	625	750	2,729,302.50	31	42	692,662.00	871,230.00	112,175.50	70,917,156.00	2.97																				
11/15/2008	53,484,812.00	1125 (\$1, N), 1126 (\$5,N) - 11/10/08	3,336,934.00	6	7	5,459,984.00	112,884.00	1,366,024.00	766,955.00	200	225	3,102,251.00	51	62	749,736.00	830,957.00	104,094.00	69,314,631.00	2.90																				
11/22/2008	52,806,511.00	0	3,452,481.00	8	9	5,329,591.00	108,861.50	1,358,271.00	743,950.00	200	200	3,666,517.00	73	86	847,201.00	849,077.50	104,797.50	69,267,258.50	2.90																				
11/29/2008	52,199,741.00	1127 (\$2,N), 1128 (\$5,N) - 11/24/08	3,585,374.00	10	11	5,340,783.50	111,443.00	1,315,233.00	686,077.00	200	225	4,441,715.00	96	111	968,906.00	845,475.50	102,569.00	69,597,317.00	2.91																				
12/6/2008	56,731,851.00	0	3,794,991.00	12	13	5,752,593.00	121,663.50	1,416,446.00	780,328.00	250	200	6,238,355.00	128	146	1,270,214.00	881,841.50	107,357.00	77,095,640.00	3.23																				
12/13/2008	54,109,617.00	1129 (\$1, N) - 12/08/08	3,315,658.00	4	5	5,580,770.00	114,295.50	1,384,858.00	766,893.00	225	250	9,150,536.00	170	207	1,691,121.00	846,176.50	101,919.50	77,061,844.50	3.22																				
12/20/2008	55,777,328.00	1104 (\$2,N), 1105 (\$5,N), 1106 (\$10,N) - 12/15/08	3,432,340.00	6	7	5,741,120.00	116,075.50	1,401,805.00	741,945.00	200	200	2,736,234.00	12	16	687,875.00	871,579.50	104,543.00	71,610,845.00	3.00																				
weekly change	3.08%		3.52%			2.87%	1.56%	1.22%	-3.25%			-70.10%			-59.32%	3.00%	2.57%		-7.07%																				
<table border="0" style="width:100%; border-collapse: collapse;"> <tr> <td style="text-align: center;">SALES</td> <td style="text-align: center;">SALES</td> <td style="text-align: center;">SALES</td> <td style="text-align: center;">SALES</td> <td style="text-align: center;">SALES</td> <td style="text-align: center;">SALES</td> <td style="text-align: center;">SALES</td> <td style="text-align: center;">SALES</td> <td style="text-align: center;">SALES</td> <td style="text-align: center;">SALES</td> <td style="text-align: center;">SALES</td> <td style="text-align: center;">SALES</td> <td style="text-align: center;">SALES</td> <td style="text-align: center;">SALES</td> <td style="text-align: center;">SALES</td> <td style="text-align: center;">SALES</td> <td style="text-align: center;">SALES</td> <td style="text-align: center;">SALES</td> <td style="text-align: center;">SALES</td> <td style="text-align: center;">% of Sales</td> </tr> </table>																				SALES	SALES	SALES	SALES	SALES	SALES	SALES	SALES	SALES	SALES	SALES	SALES	SALES	SALES	SALES	SALES	SALES	SALES	SALES	% of Sales
SALES	SALES	SALES	SALES	SALES	SALES	SALES	SALES	SALES	SALES	SALES	SALES	SALES	SALES	SALES	SALES	SALES	SALES	SALES	% of Sales																				
Startup to date	34,291,855,703.00		10,333,800,887.00			3,382,650,378.00	8,265,839.00	2,140,633,360.00	439,932,231.00			979,459,310.50			230,751,891.00	54,921,705.50	9,985,174.00	52,080,390,451.00	100.0%																				
Calendar Year to date	2,670,650,101.00		188,886,425.00			277,189,627.50	6,852,236.00	71,507,829.00	47,530,391.00			178,940,011.50			41,803,238.00	41,546,290.00	6,403,884.50	3,531,310,033.50	100.0%																				
Fiscal Year to date 2009	811,269,701.00		54,703,840.00			83,931,425.50	1,780,009.00	21,477,350.00	13,666,513.00			53,320,715.50			12,543,857.00	12,704,734.00	1,646,370.50	1,067,044,515.50	100.0%																				