



WEEKLY SALES SUMMARY

Unaudited

[Week Ending: 12/20/2014](#)

Texas Lottery Commission
Fiscal Year to Date Sales Comparison
Unaudited

Through the Week Ending 12/20/2014 (16 Weeks)

Sales by Game	FY 2013 *	FY 2014 **	FY 2015	\$ Change		% Change	
				FY 2015 to FY 2013	FY 2015 to FY 2014	FY 2015 to FY 2013	FY 2015 to FY 2014
Instants	\$ 938,049,781	\$ 964,827,229	\$ 1,001,375,647	\$ 63,325,866	\$ 36,548,418	6.8%	3.8%
Lotto Texas	50,037,087	41,040,872	36,683,257	-13,353,830	-4,357,615	-26.7%	-10.6%
Lotto Extra	-	5,259,396	5,537,385	5,537,385	277,989	-	5.3%
Pick 3	82,577,412	77,288,793	76,187,065	-6,390,347	-1,101,728	-7.7%	-1.4%
Pick 3 Sum It Up	1,549,633	1,527,371	1,455,804	-93,829	-71,568	-6.1%	-4.7%
Cash Five	17,682,420	16,199,198	15,167,493	-2,514,927	-1,031,705	-14.2%	-6.4%
Texas Two Step	17,834,914	16,838,523	17,085,704	-749,210	247,181	-4.2%	1.5%
Mega Millions	33,212,565	84,737,405	48,280,968	15,068,403	-36,456,437	45.4%	-43.0%
Megaplier	7,721,826	17,022,051	10,975,274	3,253,448	-6,046,777	42.1%	-35.5%
Daily 4	21,674,388	25,494,632	25,688,864	4,014,476	194,232	18.5%	0.8%
Daily 4 Sum It Up	1,456,505	1,570,971	1,539,030	82,525	-31,941	5.7%	-2.0%
Powerball	100,715,177	70,123,875	51,342,503	-49,372,674	-18,781,372	-49.0%	-26.8%
Power Play	9,737,776	8,212,242	6,753,694	-2,984,082	-1,458,548	-30.6%	-17.8%
All or Nothing	29,668,186	14,364,002	11,987,134	-17,681,052	-2,376,868	-59.6%	-16.5%
Monopoly	-	-	1 2,656,700	2,656,700	2,656,700	-	-
Total	\$ 1,311,917,669	\$ 1,344,506,559	\$ 1,312,716,521	\$ 798,852	\$ -31,790,039	0.1%	-2.4%

* 2 extra days

** 1 extra day

1 Monopoly sales were suspended after draw on 12/12/14

Texas Lottery Commission
 Fiscal Year to Date Cumulative Average Sales Comparison
 Unaudited

Through the Week Ending 12/20/2014 (16 Weeks)

Sales by Game	FY 2013	FY 2014	FY 2015
Instant	\$ 8,301,325	\$ 8,614,529	\$ 9,021,402
Lotto Texas	442,806	366,436	330,480
Lotto Extra	-	46,959	49,886
Pick 3	730,774	690,079	686,370
Pick 3 Sum It Up	13,714	13,637	13,115
Cash Five	156,482	144,636	136,644
Texas Two Step	157,831	150,344	153,925
Mega Millions	293,917	756,584	434,964
Megaplier	68,335	151,983	98,876
Daily 4	191,809	227,631	231,431
Daily 4 Sum It Up	12,889	14,027	13,865
Powerball	891,285	626,106	462,545
Power Play	86,175	73,324	60,844
All or Nothing	* 282,554	128,250	107,992
Monopoly	-	- **	48,304
Total	\$ 11,629,895	\$ 12,004,523	\$ 11,850,644

	thru 12/22/2012	thru 12/21/2013	thru 12/20/2014
	113 days	112 days	111 days
*	105 days		** 55 days

Texas Lottery Commission
Fiscal Year Over Year Change in Sales
Unaudited
FY 2015 Compared to FY 2014

			INSTANT TICKETS				DRAW GAMES				TOTAL SALES			
Week	FY 2015		FY 2015	FY 2014	Difference	% change - Cumulative Sales	FY 2015	FY 2014	Difference	% change - Cumulative Sales	FY 2015	FY 2014	Difference	% change - Cumulative Sales
	Ending	Week												
1	9/6/2014 *		\$54,911,801	\$58,587,757	(\$3,675,956)	-6.3%	\$17,482,488	\$22,369,499	(\$4,887,011)	-21.8%	\$72,394,289	\$80,957,256	(\$8,562,967)	-10.6%
2	9/13/2014		\$61,436,533	\$57,135,931	\$4,300,602	7.5%	\$19,097,081	\$25,412,980	(\$6,315,899)	-24.9%	\$80,533,614	\$82,548,911	(\$2,015,297)	-2.4%
3	9/20/2014		\$60,959,234	\$59,018,194	\$1,941,040	3.3%	\$20,567,894	\$29,161,241	(\$8,593,347)	-29.5%	\$81,527,128	\$88,179,435	(\$6,652,307)	-7.5%
4	9/27/2014		\$59,710,056	\$57,927,984	\$1,782,072	3.1%	\$19,920,828	\$20,012,313	(\$91,485)	-0.5%	\$79,630,884	\$77,940,297	\$1,690,588	2.2%
5	10/4/2014		\$62,119,854	\$62,146,816	(\$26,962)	0.0%	\$18,531,421	\$20,043,557	(\$1,512,136)	-7.5%	\$80,651,275	\$82,190,373	(\$1,539,098)	-1.9%
6	10/11/2014		\$61,253,665	\$60,867,582	\$386,083	0.6%	\$18,985,332	\$19,480,962	(\$495,631)	-2.5%	\$80,238,997	\$80,348,544	(\$109,548)	-0.1%
7	10/18/2014		\$60,230,048	\$60,612,193	(\$382,145)	-0.6%	\$19,538,402	\$20,079,610	(\$541,209)	-2.7%	\$79,768,450	\$80,691,803	(\$923,354)	-1.1%
8	10/25/2014		\$62,384,112	\$59,548,277	\$2,835,835	4.8%	\$21,475,643	\$19,319,928	\$2,155,715	11.2%	\$83,859,755	\$78,868,205	\$4,991,550	6.3%
9	11/1/2014		\$63,404,713	\$61,710,236	\$1,694,477	2.7%	\$23,568,817	\$18,308,976	\$5,259,842	28.7%	\$86,973,530	\$80,019,212	\$6,954,319	8.7%
10	11/8/2014		\$65,486,719	\$61,668,594	\$3,818,125	6.2%	\$23,749,032	\$19,555,070	\$4,193,963	21.4%	\$89,235,751	\$81,223,664	\$8,012,088	9.9%
11	11/15/2014		\$61,745,521	\$60,057,025	\$1,688,496	2.8%	\$17,449,604	\$20,930,071	(\$3,480,468)	-16.6%	\$79,195,125	\$80,987,096	(\$1,791,972)	-2.2%
12	11/22/2014		\$66,353,583	\$63,118,266	\$3,235,317	5.1%	\$17,108,084	\$19,086,770	(\$1,978,687)	-10.4%	\$83,461,667	\$82,205,036	\$1,256,631	1.5%
13	11/29/2014		\$60,471,184	\$57,145,294	\$3,325,890	5.8%	\$17,303,129	\$20,434,618	(\$3,131,489)	-15.3%	\$77,774,313	\$77,579,912	\$194,401	0.3%
14	12/6/2014		\$66,648,696	\$59,883,783	\$6,764,913	11.3%	\$18,862,425	\$22,791,842	(\$3,929,417)	-17.2%	\$85,511,121	\$82,675,625	\$2,835,496	3.4%
15	12/13/2014		\$65,708,630	\$60,310,298	\$5,398,332	9.0%	\$18,649,598	\$35,859,153	(\$17,209,555)	-48.0%	\$84,358,228	\$96,169,451	(\$11,811,223)	-12.3%
16	12/20/2014		\$68,551,298	\$65,088,999	\$3,462,299	5.3%	\$19,051,100	\$46,832,745	(\$27,781,646)	-59.3%	\$87,602,398	\$111,921,744	(\$24,319,347)	-21.7%
17	12/27/2014			\$67,721,619				\$18,218,091				\$85,939,710		
18	1/3/2015			\$67,162,991				\$19,140,745				\$86,303,736		
19	1/10/2015			\$65,049,914				\$17,954,333				\$83,004,247		
20	1/17/2015			\$62,731,830				\$18,900,213				\$81,632,043		
21	1/24/2015			\$59,085,886				\$19,558,830				\$78,644,716		
22	1/31/2015			\$64,099,096				\$20,764,006				\$84,863,102		
23	2/7/2015			\$67,717,353				\$22,433,672				\$90,151,025		
24	2/14/2015			\$69,949,998				\$25,572,367				\$95,522,365		
25	2/21/2015			\$72,422,148				\$31,832,665				\$104,254,813		
26	2/28/2015			\$72,883,830				\$21,827,140				\$94,710,970		
27	3/7/2015			\$73,726,744				\$22,528,352				\$96,255,096		
28	3/14/2015			\$71,026,808				\$25,171,358				\$96,198,166		
29	3/21/2015			\$69,174,125				\$25,837,564				\$95,011,689		
30	3/28/2015			\$66,886,917				\$18,604,870				\$85,491,787		
31	4/4/2015			\$71,218,020				\$19,883,667				\$91,101,687		
32	4/11/2015			\$65,970,648				\$18,875,485				\$84,846,133		
33	4/18/2015			\$64,922,280				\$19,723,048				\$84,645,328		
34	4/25/2015			\$60,578,829				\$18,978,148				\$79,556,977		
35	5/2/2015			\$64,244,545				\$19,029,632				\$83,274,177		
36	5/9/2015			\$65,679,029				\$19,350,478				\$85,029,507		
37	5/16/2015			\$63,627,971				\$19,865,609				\$83,493,580		
38	5/23/2015			\$61,902,451				\$19,892,846				\$81,795,297		
39	5/30/2015			\$61,264,953				\$20,014,636				\$81,279,589		
40	6/6/2015			\$64,019,948				\$21,782,886				\$85,802,834		
41	6/13/2015			\$59,742,598				\$19,736,748				\$79,479,346		
42	6/20/2015			\$59,010,863				\$17,095,336				\$76,106,199		

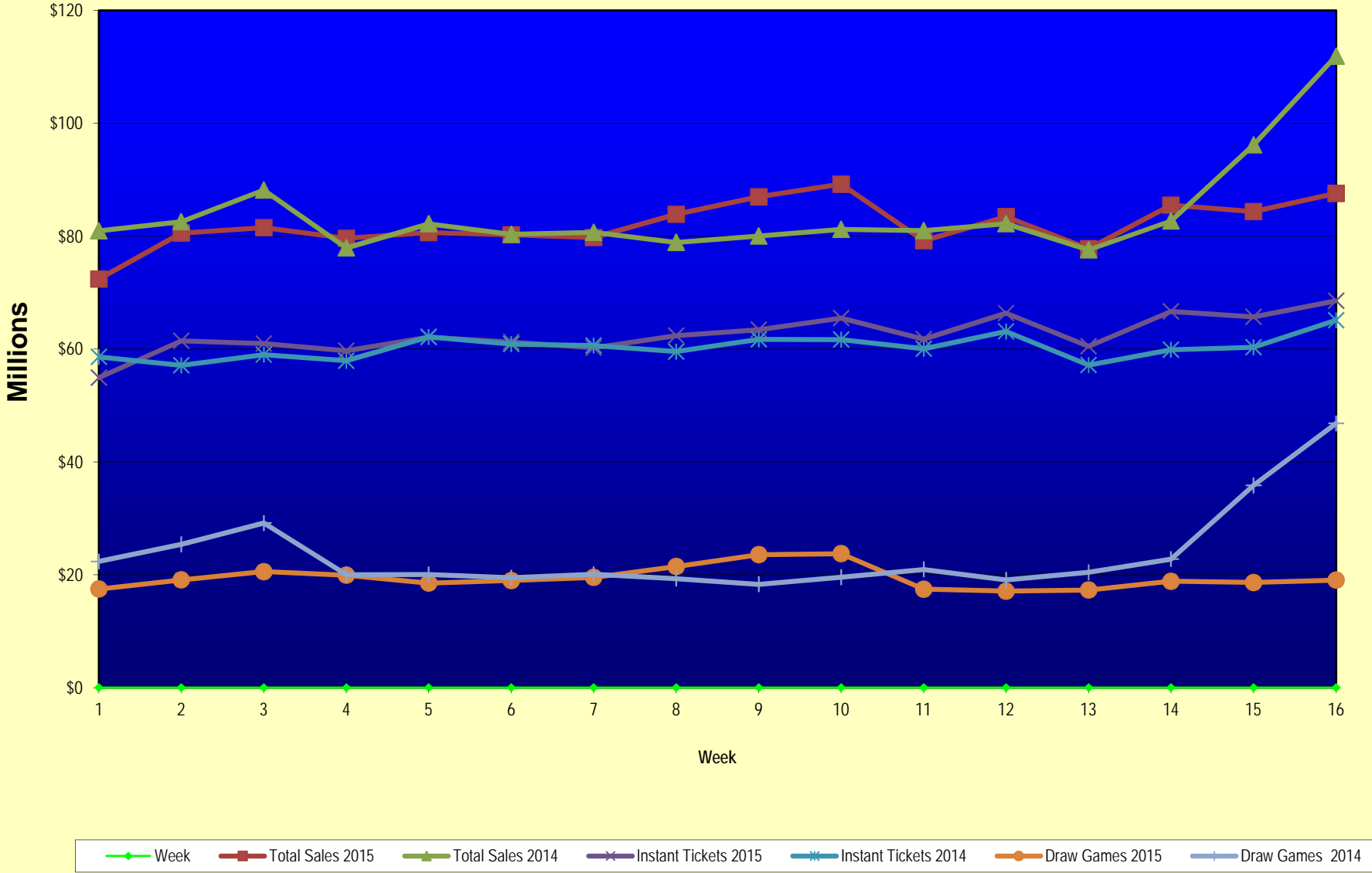
Texas Lottery Commission
Fiscal Year Over Year Change in Sales
Unaudited
FY 2015 Compared to FY 2014

			INSTANT TICKETS				DRAW GAMES				TOTAL SALES			
FY 2015			FY 2015	FY 2014	Difference	% change - Cumulative Sales	FY 2015	FY 2014	Difference	% change - Cumulative Sales	FY 2015	FY 2014	Difference	% change - Cumulative Sales
Week	Week	Ending												
43	6/27/2015			\$58,102,191				\$17,635,736				\$75,737,927		
44	7/4/2015			\$61,566,071				\$18,521,529				\$80,087,600		
45	7/11/2015			\$58,729,674				\$17,913,387				\$76,643,061		
46	7/18/2015			\$58,202,035				\$17,602,032				\$75,804,067		
47	7/25/2015			\$57,220,932				\$17,736,889				\$74,957,821		
48	8/1/2015			\$64,207,294				\$18,208,743				\$82,416,037		
49	8/8/2015			\$60,066,007				\$19,022,945				\$79,088,952		
50	8/15/2015			\$58,374,809				\$18,567,246				\$76,942,055		
51	8/22/2015			\$57,277,475				\$18,916,460				\$76,193,935		
52	8/29/2015			\$61,884,256				\$17,283,925				\$79,168,181		
	8/31/2015 **			\$7,949,803				\$706,956				\$8,656,759		
Total thru Current Week			\$1,001,375,647	\$964,827,229	\$36,548,418	3.8%	\$311,340,874	\$379,679,330	(\$68,338,457)	-18.0%	\$1,312,716,521	\$1,344,506,559	(\$31,790,039)	-2.4%
Fiscal Year Total			\$1,001,375,647	\$3,280,229,170			\$311,340,874	\$1,104,367,893			\$1,312,716,521	\$4,384,597,063		

* FY 15 includes 6 days

** FY 15 includes 2 days; FY 14 includes 1 day

Texas Lottery Commission Fiscal Year Over Year Change in Sales



Note: Week 1 is not a full week of sales as this report is prepared on a Fiscal Year basis.

Texas Lottery Commission
Instant Tickets by Price Point
Sales, Prize Expense, Sales Contribution and Payout Percentage With Year Over Year Changes
Unaudited

Fiscal Year	Price Point	# of Active Games	FY Sales	% of Instant Ticket Sales	Year over Year Change in Sales	FY Prize Expense	Year over Year Change in Prize Expense	FY Sales Contribution	Year over Year Change in Contribution	Average Prize Payout %	Year over Year Change in Payout %
2014	\$1.00	22	55,190,262	5.7%		33,077,799		22,112,463		59.9%	-1.3%
Through	\$2.00	29	114,814,410	11.9%		74,482,183		40,332,227		64.9%	-0.2%
12/21/2013	\$3.00	14	103,041,657	10.7%		67,449,763		35,591,894		65.5%	-0.1%
	\$5.00	41	320,661,880	33.2%		217,671,616		102,990,264		67.9%	-0.2%
	\$10.00	12	182,675,240	18.9%		128,520,244		54,154,996		70.4%	-1.0%
	\$20.00	8	152,203,780	15.8%		113,973,000		38,230,780		74.9%	0.0%
	\$50.00	2	36,240,000	3.8%		28,134,897		8,105,103		77.6%	0.0%
Total		128	\$964,827,229			\$663,309,502		\$301,517,727		68.7%	-0.3%
2015	\$1.00	17	50,543,367	5.0%		30,969,580		19,573,787		61.3%	2.3%
thru	\$2.00	27	104,562,840	10.4%		69,153,939		35,408,901		66.1%	2.0%
12/20/2014	\$3.00	12	98,613,285	9.8%		64,993,895		33,619,390		65.9%	0.4%
	\$5.00	38	319,572,595	31.9%		217,105,748		102,466,847		67.9%	0.0%
	\$10.00	14	197,819,490	19.8%		139,551,949		58,267,541		70.5%	0.3%
	\$20.00	8	184,455,520	18.4%		138,305,875		46,149,645		75.0%	0.1%
	\$50.00	3	45,808,550	4.6%		35,600,659		10,207,891		77.7%	0.1%
Total		119	\$1,001,375,647			\$695,681,644		\$305,694,003		69.5%	0.8%
Variance	\$1.00	-5	-4,646,895		-8.4%	-2,108,218	-6.4%	-2,538,677	-11.5%	1.34%	
2015 to	\$2.00	-2	-10,251,570		-8.9%	-5,328,244	-7.2%	-4,923,326	-12.2%	1.26%	
2014	\$3.00	-2	-4,428,372		-4.3%	-2,455,868	-3.6%	-1,972,504	-5.5%	0.45%	
	\$5.00	-3	-1,089,285		-0.3%	-565,868	-0.3%	-523,417	-0.5%	0.05%	
	\$10.00	2	15,144,250		8.3%	11,031,705	8.6%	4,112,545	7.6%	0.19%	
	\$20.00	0	32,251,740		21.2%	24,332,874	21.3%	7,918,866	20.7%	0.10%	
	\$50.00	1	9,568,550		26.4%	7,465,761	26.5%	2,102,789	25.9%	0.08%	
Total		-9	\$36,548,418		3.8%	\$32,372,142	4.9%	\$4,176,276	1.4%	0.72%	

Notes - Instant Ticket Variances

Texas Lottery Commission
Instant Tickets by Price Point
Sales, Prize Expense, Sales Contribution and Payout Percentage With Year Over Year Changes
 Unaudited

		FY 2015		FY 2014		Difference
Sales	\$1 - \$5	\$573,292,087		\$593,708,209		-\$20,416,122
Prize Exp.	\$1 - \$5	\$382,223,162		\$392,681,360		-\$10,458,199
Sales Cont.	\$1 - \$5	\$191,068,925		\$201,026,849		-\$9,957,923
Prize Exp. %	\$1 - \$5	66.7%		66.1%		0.5%
		FY 2015		FY 2014		Difference
Sales	\$10 - \$50	\$428,083,560		\$371,119,020		\$56,964,540
Prize Exp.	\$10 - \$50	\$313,458,482		\$270,628,142		\$42,830,341
Sales Cont.	\$10 - \$50	\$114,625,078		\$100,490,879		\$14,134,199
Prize Exp. %	\$10 - \$50	73.2%		72.9%		0.3%
		FY 2015		FY 2014		Difference
Sales	Instant	\$1,001,375,647		\$964,827,229		\$36,548,418
Prize Exp.	Instant	\$695,681,644		\$663,309,502		\$32,372,142
Sales Cont.	Instant	\$305,694,003		\$301,517,727		\$4,176,276
Prize Exp. %	Instant	69.5%		68.7%		0.7%

		FY 2015		FY 2014		Difference
Sales	\$1 - \$10	\$771,111,577		\$776,383,449		-\$5,271,872
Prize Exp.	\$1 - \$10	\$521,775,111		\$521,201,604		\$573,507
Sales Cont.	\$1 - \$10	\$249,336,466		\$255,181,845		-\$5,845,379
Prize Exp. %	\$1 - \$10	67.7%		67.1%		0.5%
		FY 2015		FY 2014		Difference
Sales	\$20 - \$50	\$230,264,070		\$188,443,780		\$41,820,290
Prize Exp.	\$20 - \$50	\$173,906,533		\$142,107,898		\$31,798,636
Sales Cont.	\$20 - \$50	\$56,357,537		\$46,335,882		\$10,021,654
Prize Exp. %	\$20 - \$50	75.5%		75.4%		0.1%
		FY 2015		FY 2014		Difference
Sales	Instant	\$1,001,375,647		\$964,827,229		\$36,548,418
Prize Exp.	Instant	\$695,681,644		\$663,309,502		\$32,372,142
Sales Cont.	Instant	\$305,694,003		\$301,517,727		\$4,176,276
Prize Exp. %	Instant	69.5%		68.7%		0.7%

Texas Lottery Commission
Weekly Sales Summary
& Comparison to Previous Week
 Unaudited

	Week Ending 12/20/2014	% of Sales	Week Ending 12/13/2014	% of Sales	\$ change	% change
	<u>THIS WEEK</u>		<u>LAST WEEK</u>			
Total Sales	<u>\$87,602,398</u>		<u>\$84,358,228</u>		<u>\$3,244,170</u>	3.85%
Instant Tickets	<u>\$68,551,298</u>	78.3%	<u>\$65,708,630</u>	77.9%	<u>\$2,842,668</u>	4.33%
Lotto	\$2,403,956	2.7%	\$2,390,912	2.8%	\$13,044	0.55%
Lotto Extra	\$365,207	0.4%	\$360,296	0.4%	\$4,911	1.36%
Pick 3	\$4,980,735	5.7%	\$4,965,326	5.9%	\$15,410	0.31%
Pick 3 Sum It Up	\$94,034	0.1%	\$90,906	0.1%	\$3,128	3.44%
Cash Five	\$972,605	1.1%	\$968,380	1.1%	\$4,225	0.44%
Texas Two Step	\$840,763	1.0%	\$860,861	1.0%	-\$20,098	-2.33%
Mega Millions	\$3,150,078	3.6%	\$2,763,671	3.3%	\$386,407	13.98%
Megaplier	\$726,548	0.8%	\$644,993	0.8%	\$81,555	12.64%
Daily 4	\$1,722,159	2.0%	\$1,730,629	2.1%	-\$8,470	-0.49%
Daily 4 Sum It Up	\$99,838	0.1%	\$100,850	0.1%	-\$1,012	-1.00%
Powerball	\$2,593,858	3.0%	\$2,441,310	2.9%	\$152,548	6.25%
Power Play	\$364,498	0.4%	\$346,197	0.4%	\$18,301	5.29%
All or Nothing	\$736,822	0.8%	\$743,438	0.9%	-\$6,616	-0.89%
Monopoly	\$0	0.0%	\$241,830	0.3%	-\$241,830	-100.00%
Total Draw Game Sales	<u>\$19,051,100</u>		<u>\$18,649,598</u>		<u>\$401,502</u>	2.15%

* Totals may not sum due to rounding.

Texas Lottery Commission
Weekly Sales Summary
Unaudited

INSTANT TICKETS
TOP TEN SELLING GAMES

For the Week Ending: 12/20/14

Rank	Price Point	Game	Sales (Millions)
1	\$ 20	HOLIDAY GAME BOOK	\$ 5.254
2	\$ 10	HOLIDAY MAGIC	\$ 3.676
3	\$ 5	CAESARS	\$ 3.388
4	\$ 5	HOLIDAY GOLD	\$ 2.752
5	\$ 10	50X THE CASH	\$ 2.520
6	\$ 50	MILLIONNAIRE'S CLUB	\$ 2.507
7	\$ 3	LOTERIA	\$ 2.430
8	\$ 3	BONUS CASHWORD	\$ 2.216
9	\$ 20	100X THE CASH	\$ 2.165
10	\$ 5	20X THE CASH	\$ 2.136

Texas Lottery Commission
Prize Payout Tracking Report
Unaudited

Through the Week Ending: 12/20/14

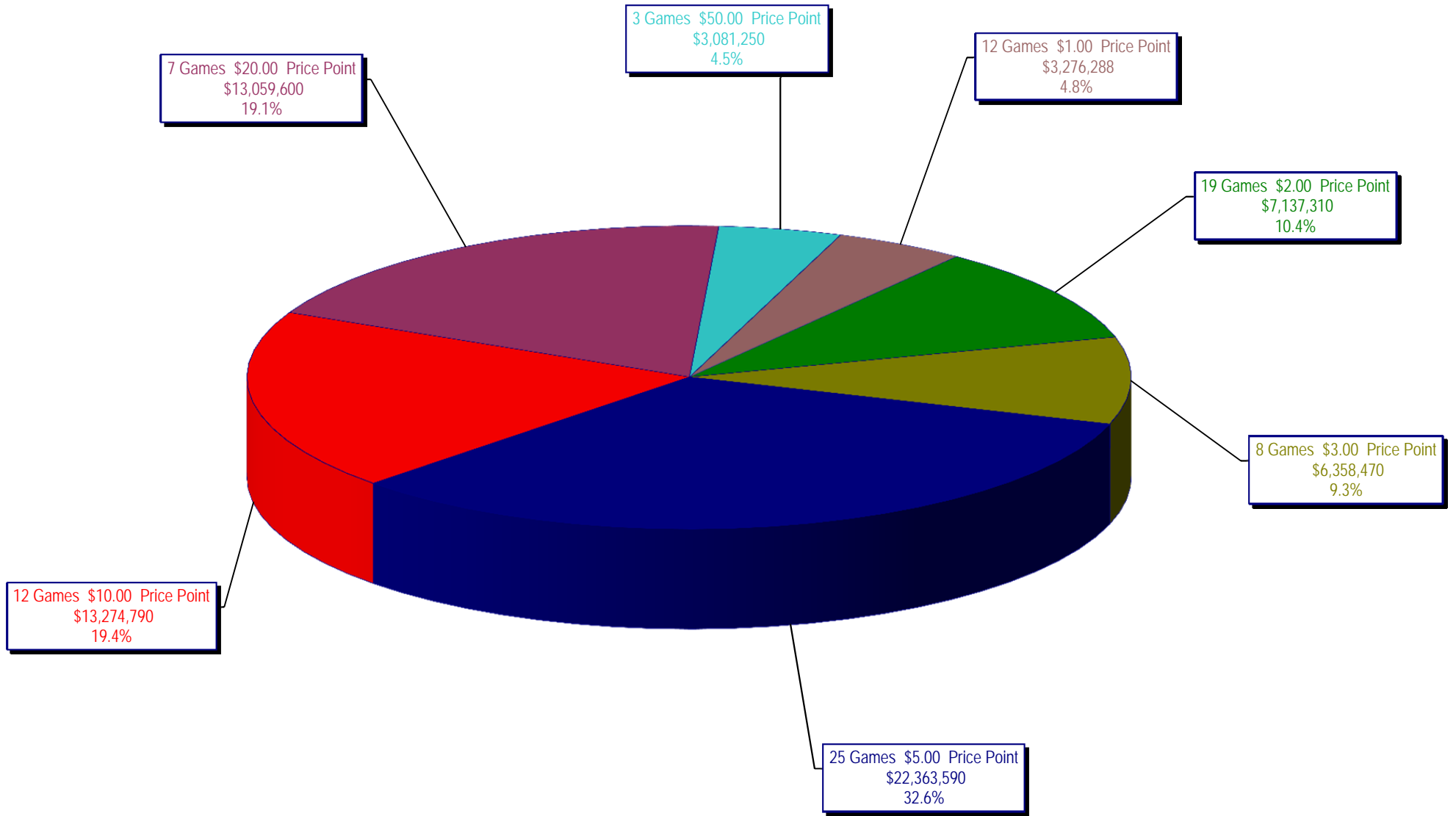
Draw Game Sales

		FY Sales Through Week Ending 12/20/2014		FY Prize Expense Through Week Ending 12/20/2014	Actual* Prize Payout	Base Payout (Prize Pool)
Lotto	\$	36,683,257	\$	18,443,519	50.28%	54.00%
Lotto Extra		5,537,385		3,003,190	54.23%	53.70%
Pick 3		76,187,065		36,502,250	47.91%	50.00%
Pick 3 Sum It Up		1,455,804		639,114	43.90%	50.00%
Cash Five		15,167,493		7,583,758	50.00%	50.00%
Texas Two Step		17,085,704		8,817,175	51.61%	50.00%
Mega Millions		48,280,968		24,605,137	50.96%	50.00%**
Megaplier		10,975,274		5,485,588	49.98%	N/A
Daily 4		25,688,864		12,160,300	47.34%	50.00%
Daily 4 Sum It Up		1,539,030		650,819	42.29%	50.00%
Powerball		51,342,503		25,745,018	50.14%	50.00%**
Power Play		6,753,694		3,386,726	50.15%	N/A
All or Nothing		11,987,134		7,520,040	62.73%	55.98%
Monopoly		2,656,700		3,317,028	124.86%	50.00%
Totals	\$	311,340,874	\$	157,859,662	50.70%	

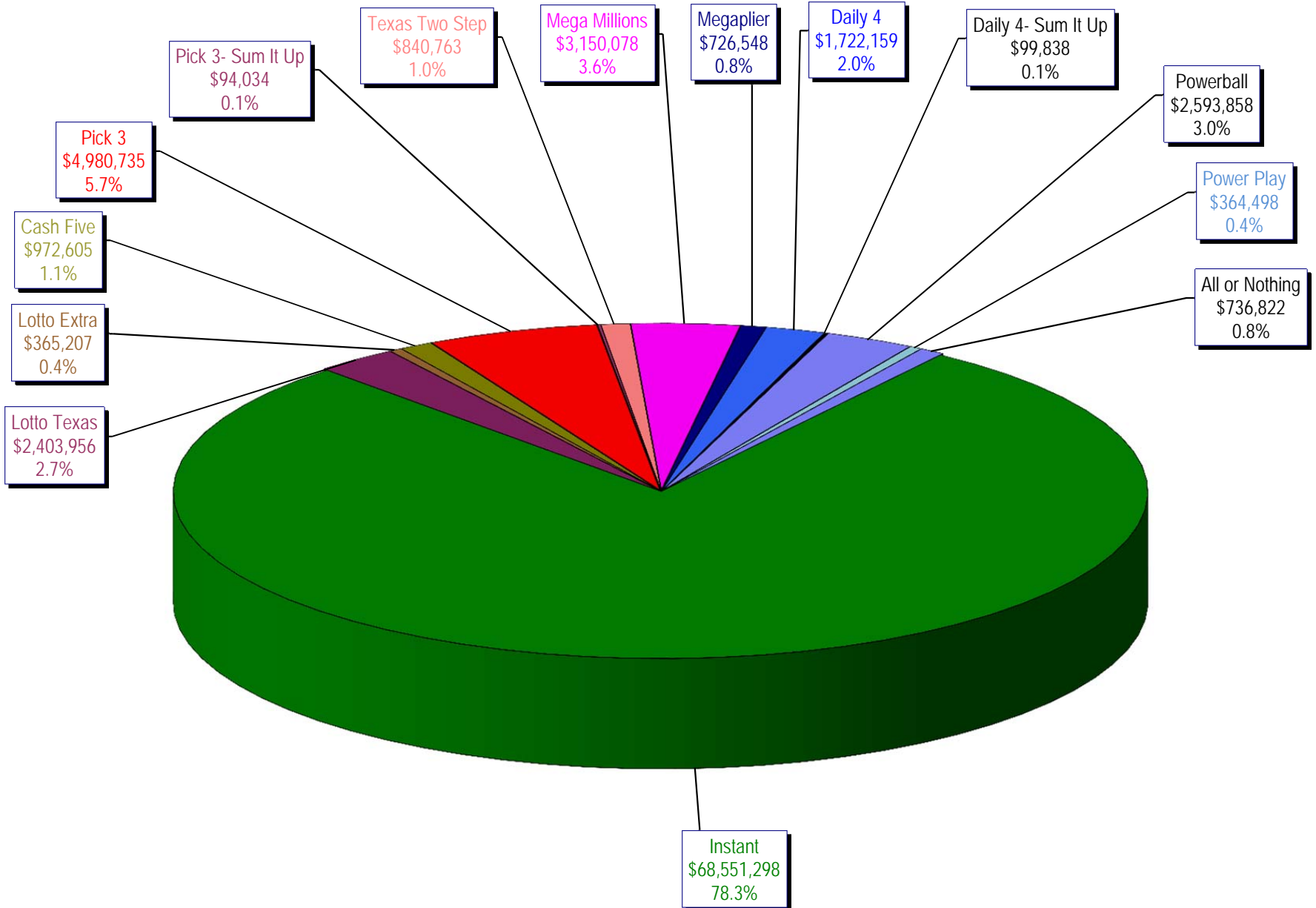
* Before Unclaimed Prizes

** Estimated; depends on # of guaranteed prizes won in Texas

Texas Lottery Commission
Instant Ticket Sales
For the Week Ending 12/20/14
(Unaudited)



Texas Lottery Commission
All Game Sales
For the Week Ending 12/20/14
(Unaudited)



Texas Lottery Commission - Weekly Sales Summary for FY 2015 (Unaudited)

Week Ended	Instant Games	New Games & Dates	Lotto Texas	Jackpot		Lotto Extra	Pick 3	Pick 3 Sum It Up	Cash Five	Texas Two Step	Jackpot		Jackpot		Megaplier	Daily 4	Daily 4 Sum It Up	Powerball	Jackpot		Power Play	All or Nothing	Monopoly	Jackpot F	Total	Per Cap.	
				W	S						M	TH	T	F					W	S							
9/06/2014*	62,861,604	1589 (\$1.N); 1592 (\$5.N) - 9/1/14	2,281,237	6	6.25	341,232	4,827,600	92,305	958,777	918,635	225	300	1,847,432	25	33	475,313	1,640,023	104,626	3,465,202	100	110	450,723	786,340		81,051,048	3.11	
9/13/2014	61,436,533	0	2,299,834	6.5	6.75	344,225	4,787,666	91,850	960,067	1,214,553	425	575	1,992,737	41	52	501,468	1,571,433	97,036	3,957,407	127	149	497,718	781,088		80,533,614	3.09	
9/20/2014	60,959,234	1647 (\$2.N); 1619 (\$5.N) - 9/15/14	2,307,003	7	7.25	347,119	4,624,949	89,960	952,214	1,582,291	750	925	2,149,120	62	72	528,733	1,536,913	95,355	4,985,548	171	196	597,868	770,822		81,527,128	3.13	
9/27/2014	59,710,056	0	2,357,199	7.5	8.25	353,734	4,540,964	89,289	938,745	1,244,640	1,175	200	2,417,365	83	93	579,889	1,512,957	91,998	4,478,698	225	40	544,723	770,628		79,630,884	3.06	
10/4/2014	62,119,854	0	2,385,322	9	9.5	360,937	4,942,321	94,197	971,047	854,141	200	200	2,966,004	105	120	682,825	1,588,795	98,392	2,443,237	50	60	348,166	786,038		80,651,275	3.09	
10/11/2014	61,253,665	1608 (\$1.N); 1653 (\$5.N); 1651 (\$10.N) - 10/6/14	2,363,624	10.25	11	355,219	4,893,634	94,926	959,659	935,385	225	300	3,310,874	136	150	748,248	1,580,735	94,717	2,522,774	70	80	356,145	769,392		80,238,997	3.08	
10/18/2014	60,230,048	0	2,267,582	11.5	5	343,643	4,664,420	92,081	946,399	842,255	200	225	3,839,669	166	180	841,086	1,522,939	90,307	2,937,145	90	100	398,723	752,154		79,768,450	3.06	
10/25/2014	62,384,112	1655 (\$1.N); 1652 (\$2.N); 1638 (\$10.N); 1637 (\$20.N) - 10/20/14	2,201,043	5.25	5.5	330,460	4,585,640	89,676	933,854	823,726	200	225	4,755,898	200	224	990,074	1,560,894	96,697	3,449,128	110	125	444,897	746,246	467,410	15	83,859,755	3.22
11/1/2014	63,404,713	1648 (\$3.N) - 10/31/14	2,289,864	5.75	6	346,139	4,620,420	87,141	925,312	993,957	300	425	5,950,540	252	284	1,199,010	1,554,893	93,945	3,903,664	142	159	494,803	733,770	375,360	18	86,973,530	3.34
11/8/2014	65,486,719	1600 (\$2.N); 1656 (\$5.N) - 11/3/14	2,269,671	6.25	6.5	345,144	4,823,896	92,098	958,406	1,336,742	550	700	4,908,320	321	15	1,013,337	1,669,728	97,535	4,560,744	178	203	561,387	753,046	358,980	21	89,235,751	3.42
11/15/2014	61,745,521	1649 (\$5.N) - 11/13/14	2,172,758	6.75	7	326,413	4,582,139	86,975	936,682	1,604,425	900	1,100	1,863,118	20	26	471,023	1,587,677	91,661	2,341,252	40	50	329,995	730,482	325,005	15	79,195,125	3.04
11/22/2014	66,353,583	1591 (\$2.N); 1659 (\$5.N); 1650 (\$5.N) - 11/17/14	2,199,718	7.25	7.5	334,361	4,639,564	87,768	933,490	851,281	200	225	2,013,021	35	43	503,022	1,588,603	91,235	2,470,536	60	70	341,955	728,436	325,095	18	83,461,667	3.20
11/29/2014	60,471,184	0	2,214,747	7.75	8.5	337,671	4,624,896	88,080	912,039	955,695	300	400	2,040,181	52	61	503,117	1,577,411	90,692	2,632,388	80	90	362,091	681,192	282,930	21	77,774,313	2.98
12/6/2014	66,648,696	1603 (\$1.N); 1646 (\$2.N); 1645 (\$5.N) - 12/01/14	2,368,094	9	9.75	359,684	5,203,649	97,575	987,770	1,292,696	550	725	2,397,206	70	80	577,206	1,786,014	106,986	2,312,972	40	50	333,011	759,472	280,090	25	85,511,121	3.28
12/13/2014	65,708,630	1613 (\$3.N) - 12/10/14	2,390,912	10.25	11	360,296	4,965,326	90,906	968,380	860,861	200	225	2,763,671	91	102	644,993	1,730,629	100,850	2,441,310	60	70	346,197	743,438	241,830	25	84,358,228	3.24
12/20/2014	68,551,298	1664 (\$2.N); 1665 (\$5.N); 1663 (\$10.N) - 12/15/14	2,403,956	11.5	12.25	365,207	4,980,735	94,034	972,605	840,763	200	200	3,150,078	113	125	726,548	1,722,159	99,838	2,593,858	80	90	364,498	736,822	0	0	87,602,398	3.36
weekly change	4.3%		0.5%			1.4%	0.3%	3.4%	0.4%	-2.3%			14.0%		12.6%		-0.5%	-1.0%	6.2%		5.3%	-0.9%	-100.0%			3.8%	
SALES			SALES			SALES	SALES	SALES	SALES	SALES			SALES	SALES	SALES	SALES	SALES	SALES	SALES	SALES	SALES	SALES	SALES	SALES	SALES	% of Sales	
Calendar Year to date	3,221,477,923		127,942,770			18,570,948	246,896,350	4,842,382	49,966,374	55,320,249			143,797,002	33,352,840	81,471,034	4,991,211	175,676,619	22,463,631	42,764,931	2,656,700					4,232,190,964	100.0%	
Fiscal Year to date 2015	1,001,375,647		36,683,257			5,537,385	76,187,065	1,455,604	15,167,493	17,085,704			48,280,968	10,975,274	25,688,864	1,539,030	51,342,503	6,753,694	11,987,134	2,656,700					1,312,716,521	100.0%	
*Full week includes 1 day from FY14																											