



*WEEKLY SALES SUMMARY*

Unaudited

[Week Ending: 12/22/2012](#)

Texas Lottery Commission  
Fiscal Year to Date Sales Comparison  
Unaudited

Through the week ending 12/22/2012 (17 weeks)

Sales by Game	FY 2011 *	FY 2012 **	FY 2013	\$ Change		% Change	
				FY 2013 to FY 2011	FY 2013 to FY 2012	FY 2013 to FY 2011	FY 2013 to FY 2012
Instants	\$ 867,860,814	\$ 889,673,535	\$ 938,049,781	\$ 70,188,967	\$ 48,376,246	8.1%	5.4%
Lotto Texas	53,528,848	55,576,169	50,037,087	-3,491,761	-5,539,082	-6.5%	-10.0%
Pick 3	86,209,375	83,253,396	82,577,412	-3,631,963	-675,985	-4.2%	-0.8%
Pick 3 Sum It Up	1,749,703	1,691,475	1,549,633	-200,071	-141,842	-11.4%	-8.4%
Cash Five	20,320,877	20,268,212	17,682,420	-2,638,457	-2,585,792	-13.0%	-12.8%
Texas Two Step	15,592,397	19,290,434	17,834,914	2,242,517	-1,455,520	14.4%	-7.5%
Mega Millions	45,874,033	49,005,084	33,212,565	-12,661,468	-15,792,519	-27.6%	-32.2%
Megaplier	10,022,303	10,808,972	7,721,826	-2,300,477	-3,087,146	-23.0%	-28.6%
Daily 4	17,881,074	19,620,580	21,674,388	3,793,315	2,053,808	21.2%	10.5%
Daily 4 Sum It Up	1,406,287	1,459,743	1,456,505	50,218	-3,239	3.6%	-0.2%
Powerball	26,634,571	40,215,499	100,715,177	74,080,606	60,499,678	278.1%	150.4%
Power Play	6,440,796	8,780,664	9,737,776	3,296,980	957,112	51.2%	10.9%
All or Nothing	-	-	29,668,186	29,668,186	29,668,186	-	-
<b>Total</b>	<b>\$ 1,153,521,077</b>	<b>\$ 1,199,643,763</b>	<b>\$ 1,311,917,669</b>	<b>\$ 158,396,592</b>	<b>\$ 112,273,906</b>	<b>13.7%</b>	<b>9.4%</b>

\* 3 extra days

\*\* 2 extra days

Texas Lottery Commission  
 Fiscal Year to Date Cumulative Average Sales Comparison  
 Unaudited

Through the week ending 12/22/2012 (17 weeks)

Sales by Game	FY 2011	FY 2012	FY 2013
Instants	\$ 7,481,559	\$ 7,736,292	\$ 8,301,325
Lotto Texas	461,456	483,271	442,806
Pick 3	743,184	723,943	730,774
Pick 3 Sum It Up	15,084	14,708	13,714
Cash Five	175,180	176,245	156,482
Texas Two Step	134,417	167,743	157,831
Mega Millions	395,466	426,131	293,917
Megaplier	86,399	93,991	68,335
Daily 4	154,147	170,614	191,809
Daily 4 Sum It Up	12,123	12,693	12,889
Powerball	229,608	349,700	891,285
Power Play	55,524	76,354	86,175
All or Nothing	-	-	282,554 *
<b>Total</b>	<b>\$ <u>9,944,147</u></b>	<b>\$ <u>10,431,685</u></b>	<b>\$ <u>11,629,895</u></b>
	thru 12/25/2010 116 days	thru 12/24/2011 115 days	thru 12/22/2012 113 days * 105 days

Texas Lottery Commission  
Fiscal Year Over Year Change in Sales  
Unaudited  
FY 2013 Compared to FY 2012

Week	FY 2013 Week Ending	INSTANT TICKETS				DRAW GAMES				TOTAL SALES			
		FY 2013	FY 2012	Difference	% change - Cumulative Sales	FY 2013	FY 2012	Difference	% change - Cumulative Sales	FY 2013	FY 2012	Difference	% change - Cumulative Sales
1	9/1/2012**	\$9,611,328	\$25,147,181	(\$15,535,853)	-61.8%	\$3,712,535	\$9,704,561	(\$5,992,026)	-61.7%	\$13,323,863	\$34,851,742	(\$21,527,879)	-61.8%
2	9/8/2012	\$56,941,761	\$50,591,068	\$6,350,693	12.6%	\$19,305,417	\$17,681,853	\$1,623,564	9.2%	\$76,247,178	\$68,272,921	\$7,974,257	11.7%
3	9/15/2012	\$56,302,875	\$49,835,063	\$6,467,812	13.0%	\$20,857,230	\$16,842,326	\$4,014,904	23.8%	\$77,160,105	\$66,677,389	\$10,482,716	15.7%
4	9/22/2012	\$54,974,438	\$49,777,138	\$5,197,300	10.4%	\$20,570,277	\$17,504,800	\$3,065,477	17.5%	\$75,544,715	\$67,281,938	\$8,262,777	12.3%
5	9/29/2012	\$54,606,674	\$51,040,274	\$3,566,400	7.0%	\$20,462,690	\$18,653,100	\$1,809,591	9.7%	\$75,069,364	\$69,693,374	\$5,375,991	7.7%
6	10/6/2012	\$59,223,327	\$53,715,157	\$5,508,170	10.3%	\$19,279,973	\$17,225,680	\$2,054,293	11.9%	\$78,503,300	\$70,940,837	\$7,562,463	10.7%
7	10/13/2012	\$57,075,606	\$51,942,121	\$5,133,485	9.9%	\$18,638,467	\$17,854,980	\$783,487	4.4%	\$75,714,073	\$69,797,101	\$5,916,972	8.5%
8	10/20/2012	\$56,630,134	\$52,837,769	\$3,792,365	7.2%	\$18,998,943	\$19,558,519	(\$559,577)	-2.9%	\$75,629,077	\$72,396,288	\$3,232,789	4.5%
9	10/27/2012	\$55,789,743	\$52,206,644	\$3,583,099	6.9%	\$20,130,190	\$21,504,565	(\$1,374,376)	-6.4%	\$75,919,933	\$73,711,209	\$2,208,724	3.0%
10	11/3/2012	\$58,142,777	\$56,265,310	\$1,877,467	3.3%	\$20,638,008	\$20,870,086	(\$232,079)	-1.1%	\$78,780,785	\$77,135,396	\$1,645,389	2.1%
11	11/10/2012	\$57,484,804	\$55,682,645	\$1,802,159	3.2%	\$20,862,872	\$17,862,404	\$3,000,468	16.8%	\$78,347,676	\$73,545,049	\$4,802,627	6.5%
12	11/17/2012	\$55,805,228	\$54,978,079	\$827,149	1.5%	\$21,660,705	\$17,879,985	\$3,780,721	21.1%	\$77,465,933	\$72,858,064	\$4,607,870	6.3%
13	11/24/2012	\$61,331,977	\$53,942,448	\$7,389,529	13.7%	\$27,172,853	\$16,877,145	\$10,295,708	61.0%	\$88,504,830	\$70,819,593	\$17,685,237	25.0%
14	12/1/2012	\$58,420,598	\$57,153,469	\$1,267,129	2.2%	\$62,797,943	\$18,298,636	\$44,499,307	243.2%	\$121,218,541	\$75,452,105	\$45,766,436	60.7%
15	12/8/2012	\$62,489,745	\$55,318,284	\$7,171,461	13.0%	\$19,630,155	\$19,033,326	\$596,829	3.1%	\$82,119,900	\$74,351,610	\$7,768,290	10.4%
16	12/15/2012	\$59,661,880	\$58,612,629	\$1,049,251	1.8%	\$20,064,982	\$20,045,279	\$19,704	0.1%	\$79,726,862	\$78,657,908	\$1,068,955	1.4%
17	12/22/2012	\$63,556,886	\$60,628,256	\$2,928,630	4.8%	\$19,084,653	\$22,572,986	(\$3,488,333)	-15.5%	\$82,641,539	\$83,201,242	(\$559,703)	-0.7%
18	12/29/2012		\$63,065,007				\$19,948,521				\$83,013,528		
19	1/5/2013		\$60,479,896				\$17,331,888				\$77,811,784		
20	1/12/2013		\$57,689,526				\$17,568,732				\$75,258,258		
21	1/19/2013		\$58,704,854				\$19,886,540				\$78,591,394		
22	1/26/2013		\$57,611,325				\$20,641,697				\$78,253,022		
23	2/2/2013		\$65,553,366				\$23,689,855				\$89,243,221		
24	2/9/2013		\$75,070,485				\$28,361,583				\$103,432,068		
25	2/16/2013		\$66,679,947				\$19,588,615				\$86,268,562		
26	2/23/2013		\$64,868,899				\$19,965,388				\$84,834,287		
27	3/2/2013		\$67,135,065				\$20,947,181				\$88,082,246		
28	3/9/2013		\$68,299,006				\$22,152,639				\$90,451,645		
29	3/16/2013		\$65,013,692				\$23,351,718				\$88,365,410		
30	3/23/2013		\$64,035,255				\$27,416,609				\$91,451,864		
31	3/30/2013		\$65,135,991				\$84,628,987				\$149,764,978		
32	4/6/2013		\$66,860,957				\$19,899,400				\$86,760,357		
33	4/13/2013		\$64,028,898				\$20,220,141				\$84,249,039		
34	4/20/2013		\$63,623,892				\$20,974,282				\$84,598,174		
35	4/27/2013		\$61,743,623				\$20,267,388				\$82,011,011		
36	5/4/2013		\$64,851,962				\$20,642,982				\$85,494,944		
37	5/11/2013		\$65,472,556				\$19,140,768				\$84,613,324		
38	5/18/2013		\$60,572,658				\$18,342,814				\$78,915,472		
39	5/25/2013		\$58,959,028				\$18,618,060				\$77,577,088		
40	6/1/2013		\$57,409,086				\$19,014,645				\$76,423,731		
41	6/8/2013		\$59,845,545				\$20,527,958				\$80,373,503		
42	6/15/2013		\$57,021,498				\$19,386,186				\$76,407,684		

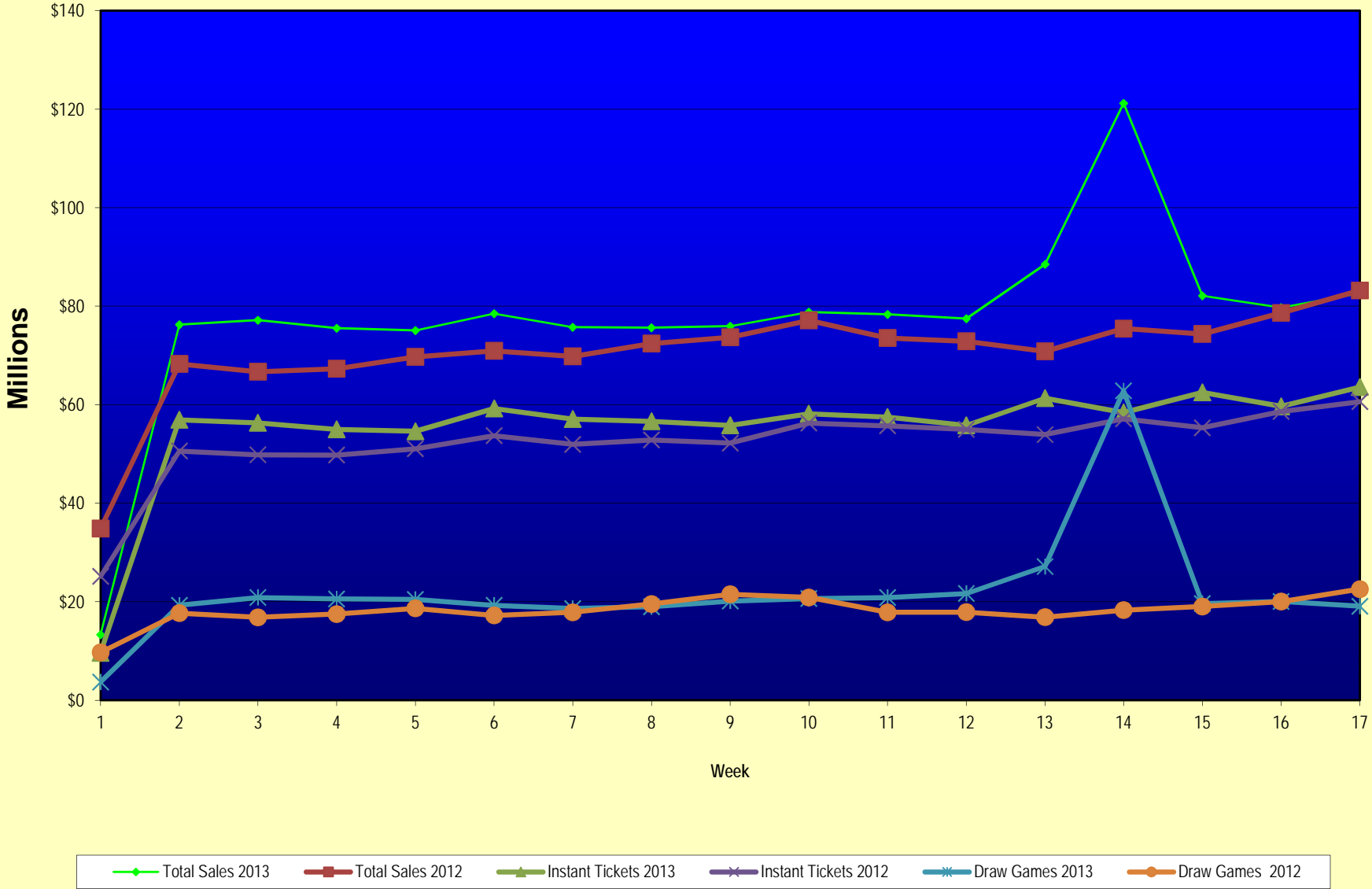
Note: Week 1 is not a full week of sales as this report is prepared on a Fiscal Year basis.

Texas Lottery Commission  
Fiscal Year Over Year Change in Sales  
Unaudited  
FY 2013 Compared to FY 2012

Week	FY 2013 Week Ending	INSTANT TICKETS				DRAW GAMES				TOTAL SALES			
		FY 2013	FY 2012	Difference	% change - Cumulative Sales	FY 2013	FY 2012	Difference	% change - Cumulative Sales	FY 2013	FY 2012	Difference	% change - Cumulative Sales
43	6/22/2013		\$57,892,076				\$17,594,154				\$75,486,230		
44	6/29/2013		\$57,497,435				\$18,153,658				\$75,651,093		
45	7/6/2013		\$60,345,000				\$19,059,152				\$79,404,152		
46	7/13/2013		\$57,683,321				\$18,751,043				\$76,434,364		
47	7/20/2013		\$57,083,343				\$18,769,201				\$75,852,544		
48	7/27/2013		\$54,006,781				\$18,934,103				\$72,940,884		
49	8/3/2013		\$56,557,409				\$20,206,705				\$76,764,114		
50	8/10/2013		\$57,799,452				\$22,832,120				\$80,631,572		
51	8/17/2013		\$54,845,724				\$25,435,624				\$80,281,348		
52	8/24/2013		\$55,661,277				\$17,524,474				\$73,185,751		
	8/31/2013		\$47,363,984				\$14,929,528				\$62,293,512		
Total thru Current Week		\$938,049,781	\$889,673,535	\$48,376,246	5.4%	\$373,867,888	\$309,970,228	\$63,897,660	20.6%	\$1,311,917,669	\$1,199,643,763	\$112,273,906	9.4%
Fiscal Year Total		\$938,049,781	\$3,086,141,354			\$373,867,888	\$1,104,674,559			\$1,311,917,669	\$4,190,815,913		

\*\* FY 2012 includes 3 days; FY 2013 includes 1 day.

### Texas Lottery Commission Fiscal Year Over Year Change in Sales



Note: Week 1 is not a full week of sales as this report is prepared on a Fiscal Year basis.

Texas Lottery Commission  
**Instant Tickets by Price Point**  
Sales, Prize Expense, Sales Contribution and Payout Percentage With Year Over Year Changes  
Unaudited

Fiscal Year	Price Point	# of Active Games	FY Sales	% of Instant Ticket Sales	Year over Year Change in Sales	FY Prize Expense	Year over Year Change in Prize Expense	FY Sales Contribution	Year over Year Change in Contribution	Average Prize Payout %	Year over Year Change in Payout %
2012	\$1.00	27	65,254,371	7.3%		40,152,073		25,102,298		61.5%	1.3%
thru	\$2.00	27	121,858,806	13.7%		79,234,628		42,624,178		65.0%	-0.8%
12/24/2011	\$3.00	15	110,926,092	12.5%		72,788,479		38,137,613		65.6%	0.0%
	\$5.00	33	277,382,765	31.2%		188,566,868		88,815,897		68.0%	0.1%
	\$7.00	4	17,832,311	2.0%		12,125,855		5,706,456		68.0%	0.0%
	\$10.00	13	144,299,390	16.2%		101,614,355		42,685,035		70.4%	-0.8%
	\$20.00	5	127,299,100	14.3%		94,972,027		32,327,073		74.6%	-0.1%
	\$50.00	1	24,820,700	2.8%		19,279,230		5,541,470		77.7%	0.1%
<b>Total</b>		<b>125</b>	<b>\$889,673,535</b>			<b>\$608,733,516</b>		<b>\$280,940,019</b>		<b>68.4%</b>	<b>-0.1%</b>
2013	\$1.00	26	56,444,215	6.0%		34,665,084		21,779,131		61.4%	1.3%
thru	\$2.00	28	119,838,628	12.8%		77,909,500		41,929,128		65.0%	-0.1%
12/22/2012	\$3.00	14	120,763,752	12.9%		79,206,777		41,556,975		65.6%	0.1%
	\$5.00	42	285,578,115	30.4%		193,919,024		91,659,091		67.9%	-0.2%
	\$7.00	2	14,575,351	1.6%		9,906,379		4,668,972		68.0%	0.0%
	\$10.00	11	160,127,980	17.1%		113,082,185		47,045,795		70.6%	-0.4%
	\$20.00	7	138,502,840	14.8%		103,680,736		34,822,104		74.9%	0.1%
	\$50.00	3	42,218,900	4.5%		32,779,158		9,439,742		77.6%	0.0%
<b>Total</b>		<b>133</b>	<b>\$938,049,781</b>			<b>\$645,148,844</b>		<b>\$292,900,937</b>		<b>68.8%</b>	<b>0.2%</b>
Variance	\$1.00	-1	-8,810,156		-13.5%	-5,486,989	-13.7%	-3,323,167	-13.2%	-0.12%	
2013 to	\$2.00	1	-2,020,178		-1.7%	-1,325,128	-1.7%	-695,050	-1.6%	-0.01%	
2012	\$3.00	-1	9,837,660		8.9%	6,418,298	8.8%	3,419,362	9.0%	-0.03%	
	\$5.00	9	8,195,350		3.0%	5,352,157	2.8%	2,843,193	3.2%	-0.08%	
	\$7.00	-2	-3,256,960		-18.3%	-2,219,476	-18.3%	-1,037,484	-18.2%	-0.03%	
	\$10.00	-2	15,828,590		11.0%	11,467,830	11.3%	4,360,760	10.2%	0.20%	
	\$20.00	2	11,203,740		8.8%	8,708,709	9.2%	2,495,031	7.7%	0.25%	
	\$50.00	2	17,398,200		70.1%	13,499,928	70.0%	3,898,272	70.3%	-0.03%	
<b>Total</b>		<b>8</b>	<b>\$48,376,246</b>		<b>5.4%</b>	<b>\$36,415,329</b>	<b>6.0%</b>	<b>\$11,960,917</b>	<b>4.3%</b>	<b>0.35%</b>	

Notes - Instant Ticket Variances





Texas Lottery Commission  
**Weekly Sales Summary**  
**& Comparison to Previous Week**  
 Unaudited

	Week Ending 12/22/2012	% of Sales	Week Ending 12/15/2012	% of Sales	\$ change	% change
	<u>THIS WEEK</u>		<u>LAST WEEK</u>			
Total Sales	<u>\$82,641,539</u>		<u>\$79,726,862</u>		<u>\$2,914,677</u>	3.66%
Instant Tickets	<u>\$63,556,886</u>	76.9%	<u>\$59,661,880</u>	74.8%	<u>\$3,895,006</u>	6.53%
Lotto	\$3,076,409	3.7%	\$3,087,087	3.9%	-\$10,678	-0.35%
Pick 3	\$5,170,946	6.3%	\$5,221,374	6.5%	-\$50,428	-0.97%
Pick 3 Sum It Up	\$94,116	0.1%	\$98,173	0.1%	-\$4,057	-4.13%
Cash Five	\$1,108,894	1.3%	\$1,104,769	1.4%	\$4,125	0.37%
Texas Two Step	\$1,415,548	1.7%	\$1,928,422	2.4%	-\$512,874	-26.60%
Mega Millions	\$1,774,922	2.1%	\$1,933,357	2.4%	-\$158,435	-8.19%
Megaplier	\$431,471	0.5%	\$456,193	0.6%	-\$24,722	-5.42%
Daily 4	\$1,385,861	1.7%	\$1,398,647	1.8%	-\$12,786	-0.91%
Daily 4 Sum It Up	\$87,012	0.1%	\$88,811	0.1%	-\$1,799	-2.03%
Powerball	\$2,658,349	3.2%	\$2,808,938	3.5%	-\$150,589	-5.36%
Power Play	\$349,278	0.4%	\$364,704	0.5%	-\$15,426	-4.23%
All or Nothing	\$1,531,847	1.9%	\$1,574,508	2.0%	-\$42,661	-2.71%
Total Draw Game Sales	<u>\$19,084,653</u>		<u>\$20,064,982</u>		<u>-\$980,330</u>	-4.89%

\* Totals may not sum due to rounding.

Texas Lottery Commission  
Weekly Sales Summary  
Unaudited

INSTANT TICKETS  
TOP TEN SELLING GAMES

For the Week Ending: 12/22/12

Rank	Price Point	Game	Sales (Millions)
1	\$ 10	HOLIDAY DOUBLER	\$ 4.176
2	\$ 20	MERRY MILLIONS	\$ 3.307
3	\$ 5	HAPPY HOLIDAYS	\$ 3.268
4	\$ 5	GOLDEN SPADES	\$ 2.730
5	\$ 5	\$100,000 CASH	\$ 2.667
6	\$ 20	\$500 MILLION EXTREME CASH BLAST	\$ 2.464
7	\$ 50	\$7,500,000 FORTUNE	\$ 2.450
8	\$ 3	LOTERIA TEXAS	\$ 2.246
9	\$ 10	\$200 MILLION CASH SPECTACULAR	\$ 1.980
10	\$ 3	JINGLE BELL CROSSWORD	\$ 1.936

Texas Lottery Commission  
Prize Payout Tracking Report  
Unaudited

Through Week Ending 12/22/12

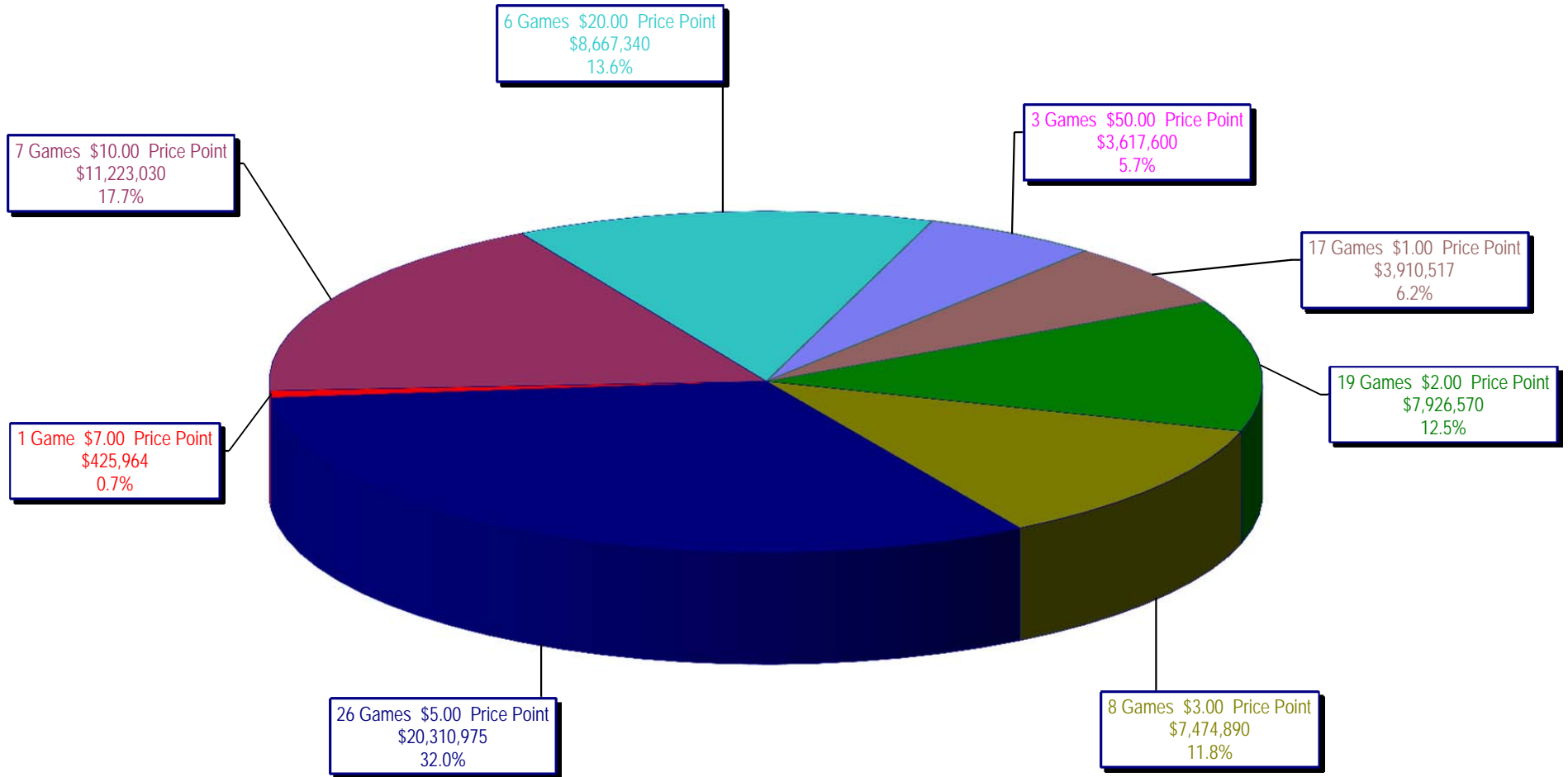
Draw Game Sales

		FY Sales Through Week Ending 12/22/2012		FY Prize Expense Through Week Ending 12/22/2012	Actual* Prize Payout	Base Payout (Prize Pool)
Lotto	\$	50,037,087	\$	31,893,440	63.74%	50.00%
Pick 3		82,577,412		43,560,990	52.75%	50.00%
Pick 3 Sum It Up		1,549,633		715,997	46.20%	50.00%
Cash Five		17,682,420		8,842,998	50.01%	50.00%
Texas Two Step		17,834,914		9,024,068	50.60%	50.00%
Mega Millions		33,212,565		16,227,756	48.86%	50.00%**
Megaplier		7,721,826		4,014,899	51.99%	N/A
Daily 4		21,674,388		9,239,400	42.63%	50.00%
Daily 4 Sum It Up		1,456,505		544,595	37.39%	50.00%
Powerball		100,715,177		53,283,132	52.90%	50.00%**
Power Play		9,737,776		5,530,910	56.80%	N/A
All or Nothing		29,668,186		17,189,746	57.94%	50.00%
<b>Totals</b>	\$	<b>373,867,888</b>	\$	<b>200,067,931</b>	<b>53.51%</b>	

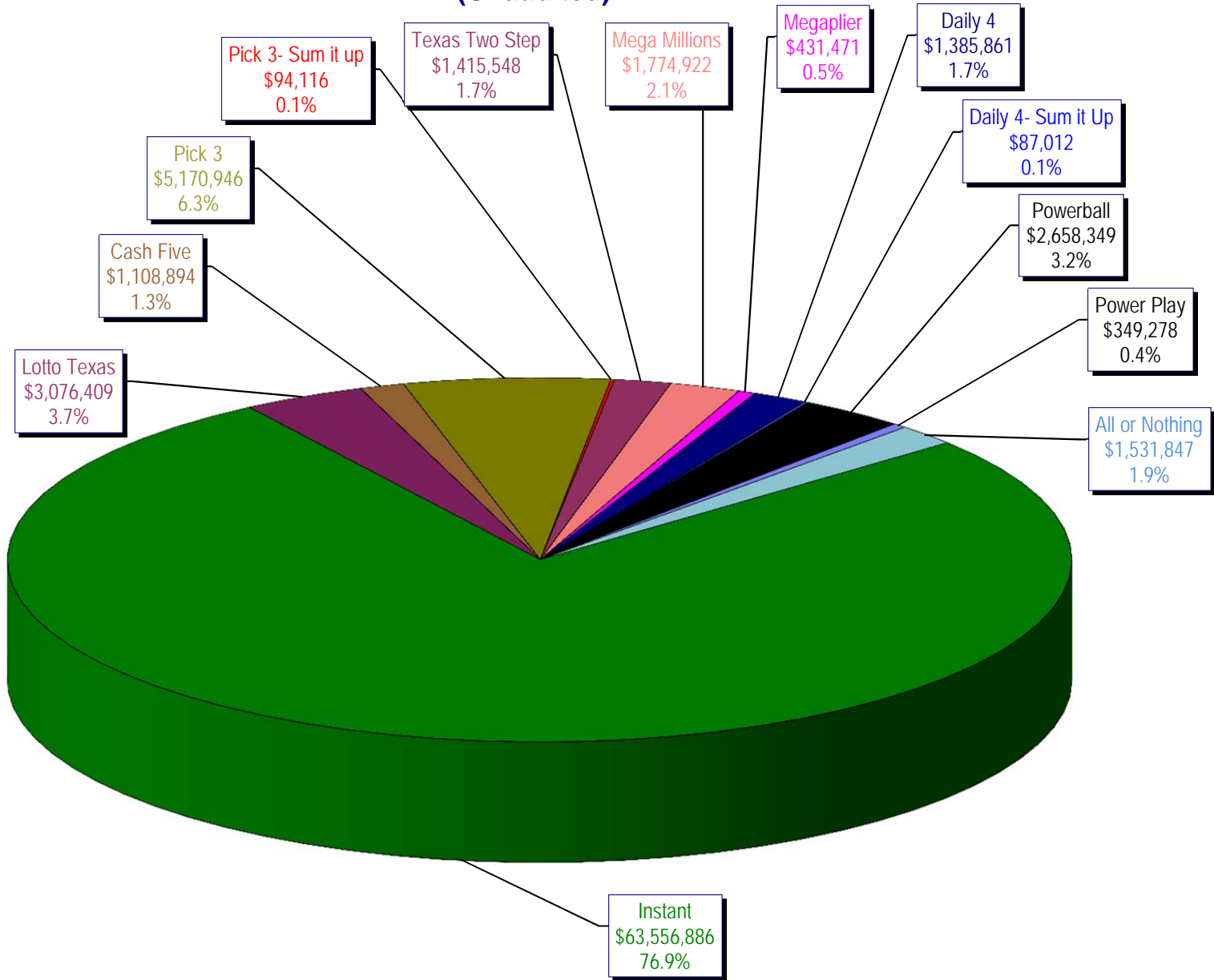
\* Before Unclaimed Prizes

\*\* Estimated; depends on # of guaranteed prizes won in Texas

Texas Lottery Commission  
Instant Ticket Sales  
For the Week Ending 12/22/12  
(Unaudited)



**Texas Lottery Commission  
All Game Sales  
For the Week Ending 12/22/12  
(Unaudited)**



Texas Lottery Commission - Weekly Sales Summary for FY 2013 (Unaudited)

Week Ended	Instant Games	New Games & Dates	Lotto Texas	Jackpot W S	Pick 3	Pick 3 Sum It Up	Cash Five	Texas Two Step	Jackpot M TH	Mega Millions	Jackpot T F	Megaplier	Daily 4	Daily 4 Sum It Up	Powerball	Jackpot W S	Power Play	All or Nothing	Total	Per Cap.	
9/1/2012	56,975,312	1446 (\$1, N); 1444 (\$2, N) - 08/27/12	2,972,415	12 13	4,967,337	105,441	1,198,597	1,455,689	500 675	2,769,421	73 83	612,072	1,419,103	97,265	2,680,694	70 80	364,030		75,617,375	2.95	
9/8/2012	56,941,761	1440 (\$2, N); 1458 (\$3, N); 1459 (\$5, N) - 09/03/12	3,005,564	14 15	5,112,132	106,959	1,185,494	1,179,003	875 200	3,140,536	93 105	665,392	1,412,279	99,861	3,002,910	90 100	395,287		76,247,178	2.97	
9/15/2012	56,302,875	1452 (\$3, N) - 09/10/12	2,999,894	16 17	4,785,209	95,720	1,118,519	894,412	225 200	2,684,227	120 12	580,869	1,290,478	90,795	3,373,296	110 125	417,470	2,526,342	77,160,105	3.01	
9/22/2012	54,974,438	1460 (\$1, N); 1461 (\$5, N) - 09/17/12	2,986,898	18 19	4,611,684	89,173	1,091,440	986,264	225 325	1,874,336	15 12	452,082	1,258,191	86,390	4,122,790	149 174	479,344	2,531,686	75,544,715	2.94	
9/29/2012	54,606,674	1462 (\$2, N); 1472 (\$10, N) - 09/24/12	3,047,519	20 21	4,708,250	90,752	1,077,739	1,313,257	475 625	1,884,366	14 21	452,334	1,278,847	87,211	3,779,359	200 40	445,091	2,297,966	75,069,364	2.92	
10/6/2012	59,223,327	1464 (\$5, N) - 10/01/12	3,164,231	22 23	4,947,571	96,251	1,121,146	1,188,386	800 200	2,055,918	28 36	482,303	1,310,612	89,270	2,266,428	50 40	312,877	2,244,980	78,503,300	3.06	
10/13/2012	57,075,606	1465 (\$1, N); 1466 (\$20, N) - 10/08/2012	3,133,742	24 25	4,793,793	89,663	1,074,687	865,146	225 200	2,163,099	45 53	492,614	1,261,858	84,585	2,241,120	50 60	309,684	2,128,476	75,714,073	2.95	
10/20/2012	56,630,134	1467 (\$1, N); 1468 (\$5, N) - 10/15/12	3,172,820	26 27	4,959,071	88,413	1,074,980	970,100	225 325	1,984,966	61 12	466,730	1,296,602	84,868	2,447,518	70 80	328,436	2,124,439	75,629,077	2.95	
10/27/2012	55,789,743	1469 (\$2, N); 1470 (\$10, N) - 10/22/2012	3,204,694	28 29	5,550,567	96,242	1,063,201	1,226,578	450 600	1,778,725	13 21	430,528	1,381,019	91,618	2,914,062	90 100	371,273	2,021,684	75,919,933	2.96	
11/3/2012	58,142,777	1503 (\$5, N) - 10/29/2012	3,392,650	30 31	5,501,964	101,742	1,078,593	860,073	200 225	1,950,117	27 32	462,385	1,393,099	93,773	3,466,242	110 124	424,170	1,913,200	78,780,785	3.07	
11/10/2012	57,484,804	1475 (\$1, N); 1476 (\$3, N) - 11/05/2012	3,061,999	32 4	5,468,924	100,767	1,083,928	837,666	200 200	1,783,099	12 13	430,343	1,402,194	94,451	4,246,246	143 168	491,538	1,861,718	78,347,676	3.05	
11/17/2012	55,805,228	1477 (\$2, N); 1478 (\$5, N) - 11/12/2012	2,599,190	5 6	5,248,059	91,989	1,059,723	920,319	225 300	1,841,571	19 26	440,783	1,345,121	88,391	5,638,425	185 214	615,323	1,771,812	77,465,933	3.02	
11/24/2012	61,331,977	1394 (\$50, N) - 11/19/2012	2,768,876	7 8	5,086,879	91,409	1,021,878	883,407	425 200	2,003,365	33 41	472,723	1,300,693	85,037	10,768,045	250 325	1,053,006	1,637,536	88,504,830	3.45	
12/1/2012	58,420,598	0	3,304,053	9 10	5,123,778	97,511	1,086,916	925,805	225 275	2,358,380	49 12	533,175	1,319,684	92,240	43,264,700	550 40	2,894,606	1,797,096	121,218,541	4.72	
12/8/2012	62,489,745	1479 (\$1, N); 1485 (\$5, N) - 12/03/12	2,971,837	11 12	5,374,747	101,479	1,129,990	1,359,739	425 575	1,861,503	13 20	445,171	1,391,477	94,879	2,832,293	50 40	362,145	1,704,896	82,119,900	3.20	
12/15/2012	59,661,880	0	3,087,087	13 14	5,221,374	98,173	1,104,769	1,928,422	775 1,000	1,933,357	27 35	456,193	1,398,647	88,811	2,808,938	50 40	364,704	1,574,508	79,726,862	3.11	
12/22/2012	63,556,886	1481 (\$1, N); 1482 (\$2, N); 1483 (\$5, N) - 12/17/12	3,076,409	15 16	5,170,946	94,116	1,108,894	1,415,548	1,250 200	1,774,922	12 12	431,471	1,385,861	87,012	2,658,349	50 40	349,278	1,531,847	82,641,539	3.22	
weekly change	6.5%		-0.3%		-1.0%	-4.1%	0.4%	-26.6%		-8.2%		-5.4%	-0.9%	-2.0%					-4.2%	-2.7%	3.7%
	<b>SALES</b>		<b>SALES</b>		<b>SALES</b>	<b>SALES</b>	<b>SALES</b>	<b>SALES</b>		<b>SALES</b>		<b>SALES</b>	<b>SALES</b>	<b>SALES</b>	<b>SALES</b>		<b>SALES</b>		<b>SALES</b>	<b>% of Sales</b>	
Calendar Year to date	3,071,452,593		160,782,924		268,060,020	5,438,567	61,750,539	62,314,736		191,337,007		37,231,174	69,315,072	4,811,331	231,178,269		26,735,875	29,668,186	4,220,076,291	100.0%	
Fiscal Year to date 2013	938,049,781		50,037,087		82,577,412	1,549,633	17,682,420	17,834,914		33,212,565		7,721,826	21,674,388	1,456,505	100,715,177		9,737,776	29,668,186	1,311,917,669	100.0%	