



*WEEKLY SALES SUMMARY*

Unaudited

**Week Ending: 12/24/2011**

Texas Lottery Commission  
 Fiscal Year to Date Sales Comparison  
 Unaudited

Through the week ending 12/24/2011 (17 weeks)

| Sales by Game     | FY 2010 *               | FY 2011 **              | FY 2012                 | \$ Change             |                          | % Change              |                       |
|-------------------|-------------------------|-------------------------|-------------------------|-----------------------|--------------------------|-----------------------|-----------------------|
|                   |                         |                         |                         | FY 2012 to<br>FY 2010 | FY 2012 to<br>FY 2011 to | FY 2012 to<br>FY 2010 | FY 2012 to<br>FY 2011 |
| Instants          | \$ 875,482,814          | \$ 867,860,814          | \$ 889,673,535          | \$ 14,190,721         | \$ 21,812,721            | 1.6%                  | 2.5%                  |
| Lotto Texas       | 89,049,652              | 53,528,848              | 55,576,169              | -33,473,483           | 2,047,321                | -37.6%                | 3.8%                  |
| Pick 3            | 85,711,656              | 86,209,375              | 83,253,396              | -2,458,260            | -2,955,979               | -2.9%                 | -3.4%                 |
| Pick 3 Sum It Up  | 1,715,342               | 1,749,703               | 1,691,475               | -23,868               | -58,229                  | -1.4%                 | -3.3%                 |
| Cash Five         | 21,556,373              | 20,320,877              | 20,268,212              | -1,288,161            | -52,665                  | -6.0%                 | -0.3%                 |
| Texas Two Step    | 14,473,179              | 15,592,397              | 19,290,434              | 4,817,255             | 3,698,037                | 33.3%                 | 23.7%                 |
| Mega Millions     | 62,750,309              | 45,874,033              | 49,005,084              | -13,745,225           | 3,131,051                | -21.9%                | 6.8%                  |
| Megaplier         | 13,986,280              | 10,022,303              | 10,808,972              | -3,177,308            | 786,669                  | -22.7%                | 7.8%                  |
| Daily 4           | 16,566,831              | 17,881,074              | 19,620,580              | 3,053,750             | 1,739,507                | 18.4%                 | 9.7%                  |
| Daily 4 Sum It Up | 1,603,335               | 1,406,287               | 1,459,743               | -143,592              | 53,456                   | -9.0%                 | 3.8%                  |
| Powerball         | -                       | 26,634,571              | 40,215,499              | 40,215,499            | 13,580,928               | -                     | -                     |
| Power Play        | -                       | 6,440,796               | 8,780,664               | 8,780,664             | 2,339,868                | -                     | -                     |
| <b>Total</b>      | <b>\$ 1,182,895,770</b> | <b>\$ 1,153,521,077</b> | <b>\$ 1,199,643,763</b> | <b>\$ 16,747,993</b>  | <b>\$ 46,122,686</b>     | <b>1.4%</b>           | <b>4.0%</b>           |

\* 2 extra days

\*\* 1 extra day

Texas Lottery Commission  
Fiscal Year to Date Cumulative Average Sales Comparison  
Unaudited

Through the week ending 12/24/2011 (17 weeks)

| Sales by Game     | FY 2010                     | FY 2011                     | FY 2012                     |
|-------------------|-----------------------------|-----------------------------|-----------------------------|
| Instants          | \$ 7,482,759                | \$ 7,481,559                | \$ 7,736,292                |
| Lotto Texas       | 761,108                     | 461,456                     | 483,271                     |
| Pick 3            | 732,578                     | 743,184                     | 723,943                     |
| Pick 3 Sum It Up  | 14,661                      | 15,084                      | 14,708                      |
| Cash Five         | 184,243                     | 175,180                     | 176,245                     |
| Texas Two Step    | 123,702                     | 134,417                     | 167,743                     |
| Mega Millions     | 536,327                     | 395,466                     | 426,131                     |
| Megaplier         | 119,541                     | 86,399                      | 93,991                      |
| Daily 4           | 141,597                     | 154,147                     | 170,614                     |
| Daily 4 Sum It Up | 13,704                      | 12,123                      | 12,693                      |
| Powerball         | -                           | 229,608                     | 349,700                     |
| Power Play        | -                           | 55,524                      | 76,354                      |
| <b>Total</b>      | <b>\$ 10,110,220</b>        | <b>\$ 9,944,147</b>         | <b>\$ 10,431,685</b>        |
|                   | thru 12/26/2009<br>117 days | thru 12/25/2010<br>116 days | thru 12/24/2011<br>115 days |

Texas Lottery Commission  
Fiscal Year Over Year Change in Sales  
Unaudited  
FY 2012 Compared to FY 2011

| Week | FY 2012<br>Week<br>Ending | INSTANT TICKETS |              |               |                                | ON-LINE GAMES |              |               |                                   | TOTAL SALES  |              |               |                                   |
|------|---------------------------|-----------------|--------------|---------------|--------------------------------|---------------|--------------|---------------|-----------------------------------|--------------|--------------|---------------|-----------------------------------|
|      |                           | FY 2012         | FY 2011      | Difference    | % change -<br>Cumulative Sales | FY 2012       | FY 2011      | Difference    | % change -<br>Cumulative<br>Sales | FY 2012      | FY 2011      | Difference    | % change -<br>Cumulative<br>Sales |
| 1    | 9/3/2011**                | \$25,147,181    | \$31,659,033 | (\$6,511,852) | -20.6%                         | \$9,704,561   | \$11,430,717 | (\$1,726,156) | -15.1%                            | \$34,851,742 | \$43,089,750 | (\$8,238,008) | -19.1%                            |
| 2    | 9/10/2011                 | \$50,591,068    | \$48,912,598 | \$1,678,470   | 3.4%                           | \$17,681,853  | \$16,398,160 | \$1,283,693   | 7.8%                              | \$68,272,921 | \$65,310,758 | \$2,962,163   | 4.5%                              |
| 3    | 9/17/2011                 | \$49,835,063    | \$48,988,241 | \$846,822     | 1.7%                           | \$16,842,326  | \$17,166,827 | (\$324,501)   | -1.9%                             | \$66,677,389 | \$66,155,068 | \$522,321     | 0.8%                              |
| 4    | 9/24/2011                 | \$49,777,138    | \$48,471,310 | \$1,305,828   | 2.7%                           | \$17,504,800  | \$15,623,813 | \$1,880,987   | 12.0%                             | \$67,281,938 | \$64,095,123 | \$3,186,815   | 5.0%                              |
| 5    | 10/1/2011                 | \$51,040,274    | \$50,145,138 | \$895,136     | 1.8%                           | \$18,653,100  | \$16,453,939 | \$2,199,161   | 13.4%                             | \$69,693,374 | \$66,599,077 | \$3,094,297   | 4.6%                              |
| 6    | 10/8/2011                 | \$53,715,157    | \$50,918,591 | \$2,796,566   | 5.5%                           | \$17,225,680  | \$16,974,963 | \$250,717     | 1.5%                              | \$70,940,837 | \$67,893,554 | \$3,047,283   | 4.5%                              |
| 7    | 10/15/2011                | \$51,942,121    | \$49,096,011 | \$2,846,110   | 5.8%                           | \$17,854,980  | \$16,661,904 | \$1,193,077   | 7.2%                              | \$69,797,101 | \$65,757,915 | \$4,039,187   | 6.1%                              |
| 8    | 10/22/2011                | \$52,837,769    | \$50,158,946 | \$2,678,823   | 5.3%                           | \$19,558,519  | \$17,374,460 | \$2,184,060   | 12.6%                             | \$72,396,288 | \$67,533,406 | \$4,862,883   | 7.2%                              |
| 9    | 10/29/2011                | \$52,206,644    | \$49,775,287 | \$2,431,357   | 4.9%                           | \$21,504,565  | \$18,402,209 | \$3,102,356   | 16.9%                             | \$73,711,209 | \$68,177,496 | \$5,533,713   | 8.1%                              |
| 10   | 11/5/2011                 | \$56,265,310    | \$53,337,848 | \$2,927,462   | 5.5%                           | \$20,870,086  | \$17,321,908 | \$3,548,179   | 20.5%                             | \$77,135,396 | \$70,659,756 | \$6,475,641   | 9.2%                              |
| 11   | 11/12/2011                | \$55,682,645    | \$52,285,479 | \$3,397,166   | 6.5%                           | \$17,862,404  | \$16,388,690 | \$1,473,714   | 9.0%                              | \$73,545,049 | \$68,674,169 | \$4,870,880   | 7.1%                              |
| 12   | 11/19/2011                | \$54,978,079    | \$52,424,036 | \$2,554,043   | 4.9%                           | \$17,879,985  | \$16,138,022 | \$1,741,963   | 10.8%                             | \$72,858,064 | \$68,562,058 | \$4,296,006   | 6.3%                              |
| 13   | 11/26/2011                | \$53,942,448    | \$51,262,518 | \$2,679,930   | 5.2%                           | \$16,877,145  | \$15,967,075 | \$910,070     | 5.7%                              | \$70,819,593 | \$67,229,593 | \$3,590,000   | 5.3%                              |
| 14   | 12/3/2011                 | \$57,153,469    | \$56,385,259 | \$768,210     | 1.4%                           | \$18,298,636  | \$17,553,175 | \$745,461     | 4.2%                              | \$75,452,105 | \$73,938,434 | \$1,513,671   | 2.0%                              |
| 15   | 12/10/2011                | \$55,318,284    | \$56,540,048 | (\$1,221,764) | -2.2%                          | \$19,033,326  | \$17,703,352 | \$1,329,975   | 7.5%                              | \$74,351,610 | \$74,243,400 | \$108,211     | 0.1%                              |
| 16   | 12/17/2011                | \$58,612,629    | \$57,699,991 | \$912,638     | 1.6%                           | \$20,045,279  | \$18,465,282 | \$1,579,997   | 8.6%                              | \$78,657,908 | \$76,165,273 | \$2,492,635   | 3.3%                              |
| 17   | 12/24/2011                | \$60,628,256    | \$59,800,480 | \$827,776     | 1.4%                           | \$22,572,986  | \$19,635,771 | \$2,937,215   | 15.0%                             | \$83,201,242 | \$79,436,251 | \$3,764,991   | 4.7%                              |
| 18   | 12/31/2011                |                 | \$61,423,121 |               |                                |               | \$26,122,257 |               |                                   |              | \$87,545,378 |               |                                   |
| 19   | 1/7/2012                  |                 | \$60,976,653 |               |                                |               | \$33,521,570 |               |                                   |              | \$94,498,223 |               |                                   |
| 20   | 1/14/2012                 |                 | \$50,099,433 |               |                                |               | \$17,114,637 |               |                                   |              | \$67,214,070 |               |                                   |
| 21   | 1/21/2012                 |                 | \$53,143,646 |               |                                |               | \$18,091,208 |               |                                   |              | \$71,234,854 |               |                                   |
| 22   | 1/28/2012                 |                 | \$54,096,128 |               |                                |               | \$17,446,156 |               |                                   |              | \$71,542,284 |               |                                   |
| 23   | 2/4/2012                  |                 | \$53,433,592 |               |                                |               | \$17,388,581 |               |                                   |              | \$70,822,173 |               |                                   |
| 24   | 2/11/2012                 |                 | \$60,277,094 |               |                                |               | \$18,233,038 |               |                                   |              | \$78,510,132 |               |                                   |
| 25   | 2/18/2012                 |                 | \$61,536,763 |               |                                |               | \$19,387,518 |               |                                   |              | \$80,924,281 |               |                                   |
| 26   | 2/25/2012                 |                 | \$59,046,203 |               |                                |               | \$20,054,404 |               |                                   |              | \$79,100,607 |               |                                   |
| 27   | 3/3/2012                  |                 | \$60,537,060 |               |                                |               | \$19,478,807 |               |                                   |              | \$80,015,867 |               |                                   |
| 28   | 3/10/2012                 |                 | \$59,997,361 |               |                                |               | \$19,601,658 |               |                                   |              | \$79,599,019 |               |                                   |
| 29   | 3/17/2012                 |                 | \$57,835,554 |               |                                |               | \$21,189,563 |               |                                   |              | \$79,025,117 |               |                                   |
| 30   | 3/24/2012                 |                 | \$57,911,940 |               |                                |               | \$29,729,651 |               |                                   |              | \$87,641,591 |               |                                   |
| 31   | 3/31/2012                 |                 | \$60,407,139 |               |                                |               | \$19,519,264 |               |                                   |              | \$79,926,403 |               |                                   |
| 32   | 4/7/2012                  |                 | \$60,704,285 |               |                                |               | \$19,455,317 |               |                                   |              | \$80,159,602 |               |                                   |
| 33   | 4/14/2012                 |                 | \$57,663,398 |               |                                |               | \$17,866,867 |               |                                   |              | \$75,530,265 |               |                                   |
| 34   | 4/21/2012                 |                 | \$56,740,216 |               |                                |               | \$17,429,326 |               |                                   |              | \$74,169,542 |               |                                   |
| 35   | 4/28/2012                 |                 | \$58,042,011 |               |                                |               | \$17,104,548 |               |                                   |              | \$75,146,559 |               |                                   |
| 36   | 5/5/2012                  |                 | \$66,509,159 |               |                                |               | \$17,744,833 |               |                                   |              | \$84,253,992 |               |                                   |
| 37   | 5/12/2012                 |                 | \$53,769,716 |               |                                |               | \$17,783,942 |               |                                   |              | \$71,553,658 |               |                                   |
| 38   | 5/19/2012                 |                 | \$53,704,228 |               |                                |               | \$18,623,882 |               |                                   |              | \$72,328,110 |               |                                   |
| 39   | 5/26/2012                 |                 | \$52,310,134 |               |                                |               | \$19,115,921 |               |                                   |              | \$71,426,055 |               |                                   |
| 40   | 6/2/2012                  |                 | \$53,256,725 |               |                                |               | \$18,462,603 |               |                                   |              | \$71,719,328 |               |                                   |

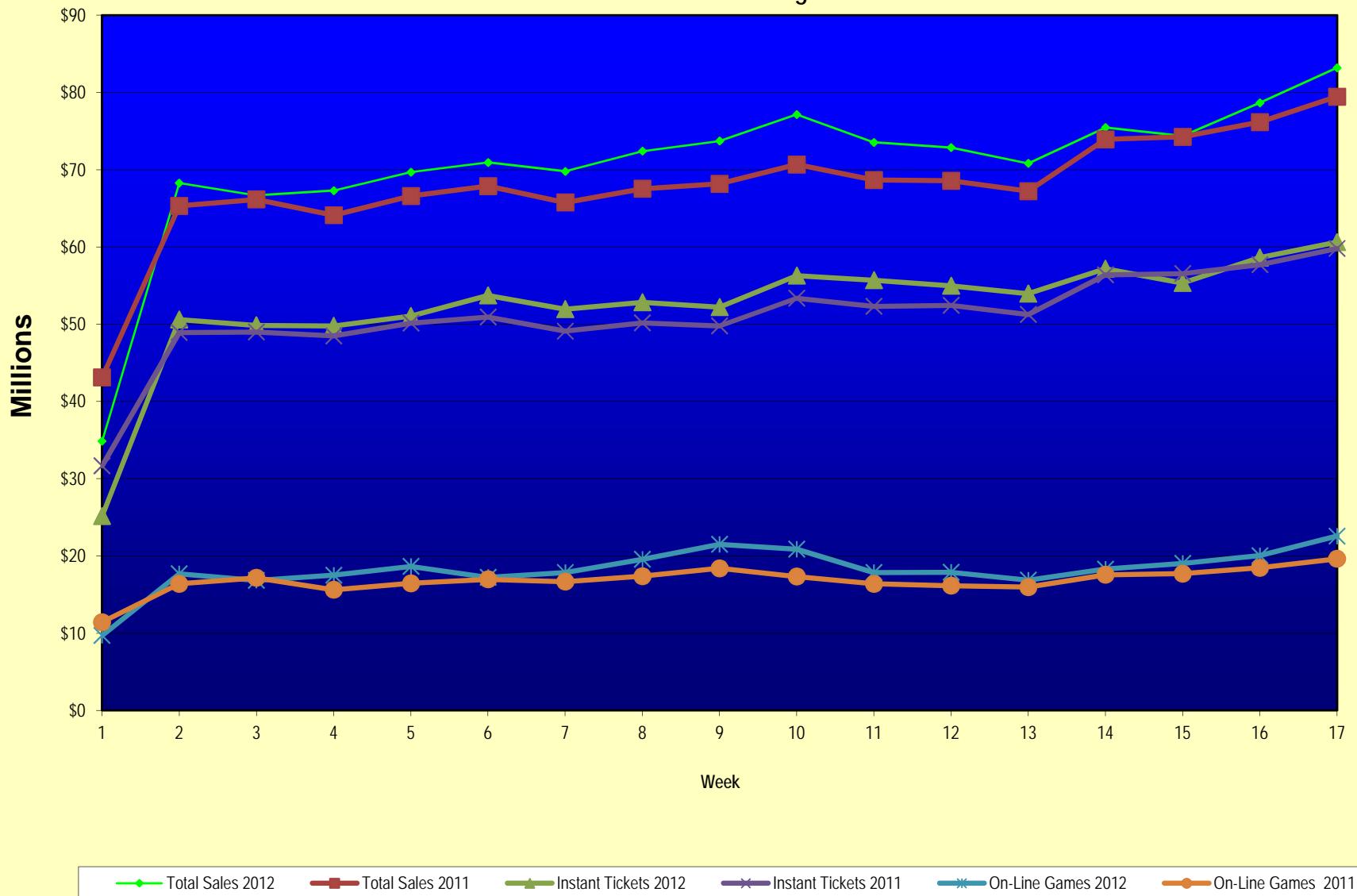
Note: Week 1 is not a full week of sales as this report is prepared on a Fiscal Year basis.

Texas Lottery Commission  
Fiscal Year Over Year Change in Sales  
Unaudited  
FY 2012 Compared to FY 2011

| Week                    | FY 2012<br>Week<br>Ending | INSTANT TICKETS |                 |              |                                | ON-LINE GAMES |               |              |                                   | TOTAL SALES     |                 |              |                                   |
|-------------------------|---------------------------|-----------------|-----------------|--------------|--------------------------------|---------------|---------------|--------------|-----------------------------------|-----------------|-----------------|--------------|-----------------------------------|
|                         |                           | FY 2012         | FY 2011         | Difference   | % change -<br>Cumulative Sales | FY 2012       | FY 2011       | Difference   | % change -<br>Cumulative<br>Sales | FY 2012         | FY 2011         | Difference   | % change -<br>Cumulative<br>Sales |
| 41                      | 6/9/2012                  |                 | \$54,293,614    |              |                                |               | \$17,213,019  |              |                                   |                 | \$71,506,633    |              |                                   |
| 42                      | 6/16/2012                 |                 | \$52,688,230    |              |                                |               | \$17,534,413  |              |                                   |                 | \$70,222,643    |              |                                   |
| 43                      | 6/23/2012                 |                 | \$53,174,595    |              |                                |               | \$17,086,937  |              |                                   |                 | \$70,261,532    |              |                                   |
| 44                      | 6/30/2012                 |                 | \$53,687,509    |              |                                |               | \$18,406,785  |              |                                   |                 | \$72,094,294    |              |                                   |
| 45                      | 7/7/2012                  |                 | \$53,054,685    |              |                                |               | \$16,211,989  |              |                                   |                 | \$69,266,674    |              |                                   |
| 46                      | 7/14/2012                 |                 | \$51,161,290    |              |                                |               | \$16,945,733  |              |                                   |                 | \$68,107,023    |              |                                   |
| 47                      | 7/21/2012                 |                 | \$50,807,750    |              |                                |               | \$17,362,213  |              |                                   |                 | \$68,169,963    |              |                                   |
| 48                      | 7/28/2012                 |                 | \$51,277,179    |              |                                |               | \$18,870,764  |              |                                   |                 | \$70,147,943    |              |                                   |
| 49                      | 8/4/2012                  |                 | \$53,320,489    |              |                                |               | \$20,922,034  |              |                                   |                 | \$74,242,523    |              |                                   |
| 50                      | 8/11/2012                 |                 | \$50,914,022    |              |                                |               | \$19,467,124  |              |                                   |                 | \$70,381,146    |              |                                   |
| 51                      | 8/18/2012                 |                 | \$49,905,898    |              |                                |               | \$17,419,045  |              |                                   |                 | \$67,324,943    |              |                                   |
| 52                      | 8/25/2012                 |                 | \$49,424,242    |              |                                |               | \$16,837,474  |              |                                   |                 | \$66,261,716    |              |                                   |
|                         | 8/31/2012                 |                 | \$27,274,804    |              |                                |               | \$8,600,118   |              |                                   |                 | \$35,874,922    |              |                                   |
| Total thru Current Week |                           | \$889,673,535   | \$867,860,814   | \$21,812,721 | 2.5%                           | \$309,970,228 | \$285,660,263 | \$24,309,965 | 8.5%                              | \$1,199,643,763 | \$1,153,521,077 | \$46,122,686 | 4.0%                              |
| Fiscal Year Total       |                           | \$889,673,535   | \$2,842,266,680 |              |                                | \$309,970,228 | \$969,003,455 |              |                                   | \$1,199,643,763 | \$3,811,270,135 |              |                                   |

\*\* FY 2011 includes 4 days; FY 2012 includes 3 days

### Texas Lottery Commission Fiscal Year Over Year Change in Sales



Note: Week 1 is not a full week of sales as this report is prepared on a Fiscal Year basis.

Texas Lottery Commission  
Instant Tickets by Price Point  
Sales, Prize Expense, Sales Contribution and Payout Percentage With Year Over Year Changes  
Unaudited

| Fiscal Year  | Price Point | # of Active Games | FY Sales             | % of Instant Ticket Sales | Year over Year Change in Sales | FY Prize Expense     | Year over Year Change in Prize Expense | FY Sales Contribution | Year over Year Change in Contribution | Average Prize Payout % | Year over Year Change in Payout % |
|--------------|-------------|-------------------|----------------------|---------------------------|--------------------------------|----------------------|--|-----------------------|---------------------------------------|------------------------|-----------------------------------|
| 2011         | \$1.00      | 26                | 61,985,848           | 7.1%                      |                                | 38,311,771           |  | 23,674,077            |                                       | 61.8%                  | 2.9%                              |
| thru         | \$2.00      | 25                | 125,354,676          | 14.4%                     |                                | 82,093,303           |  | 43,261,373            |                                       | 65.5%                  | 0.5%                              |
| 12/25/2010   | \$3.00      | 17                | 106,198,376          | 12.2%                     |                                | 69,754,121           |  | 36,444,255            |                                       | 65.7%                  | 0.1%                              |
|              | \$5.00      | 35                | 279,478,360          | 32.2%                     |                                | 190,280,650          |  | 89,197,710            |                                       | 68.1%                  | 0.1%                              |
|              | \$7.00      | 6                 | 36,482,124           | 4.2%                      |                                | 24,798,202           |  | 11,683,922            |                                       | 68.0%                  | 0.0%                              |
|              | \$10.00     | 12                | 113,924,500          | 13.1%                     |                                | 80,478,829           |  | 33,445,671            |                                       | 70.6%                  | 1.0%                              |
|              | \$20.00     | 5                 | 113,894,580          | 13.1%                     |                                | 84,466,637           |  | 29,427,943            |                                       | 74.2%                  | 1.4%                              |
|              | \$50.00     | 2                 | 30,542,350           | 3.5%                      |                                | 23,711,509           |  | 6,830,841             |                                       | 77.6%                  | 4.1%                              |
| <b>Total</b> |             | <b>128</b>        | <b>\$867,860,814</b> |                           |                                | <b>\$593,895,023</b> |  | <b>\$273,965,791</b>  |                                       | <b>68.4%</b>           | <b>1.0%</b>                       |
| 2012         | \$1.00      | 27                | 65,254,371           | 7.3%                      |                                | 40,152,073           |  | 25,102,298            |                                       | 61.5%                  | 1.3%                              |
| thru         | \$2.00      | 27                | 121,858,806          | 13.7%                     |                                | 79,234,628           |  | 42,624,178            |                                       | 65.0%                  | -0.8%                             |
| 12/24/2011   | \$3.00      | 15                | 110,926,092          | 12.5%                     |                                | 72,788,479           |  | 38,137,613            |                                       | 65.6%                  | 0.0%                              |
|              | \$5.00      | 33                | 277,382,765          | 31.2%                     |                                | 188,566,868          |  | 88,815,897            |                                       | 68.0%                  | 0.1%                              |
|              | \$7.00      | 4                 | 17,832,311           | 2.0%                      |                                | 12,125,855           |  | 5,706,456             |                                       | 68.0%                  | 0.0%                              |
|              | \$10.00     | 13                | 144,299,390          | 16.2%                     |                                | 101,614,355          |  | 42,685,035            |                                       | 70.4%                  | -0.8%                             |
|              | \$20.00     | 5                 | 127,299,100          | 14.3%                     |                                | 94,972,027           |  | 32,327,073            |                                       | 74.6%                  | -0.1%                             |
|              | \$50.00     | 1                 | 24,820,700           | 2.8%                      |                                | 19,279,230           |  | 5,541,470             |                                       | 77.7%                  | 0.1%                              |
| <b>Total</b> |             | <b>125</b>        | <b>\$889,673,535</b> |                           |                                | <b>\$608,733,516</b> |  | <b>\$280,940,019</b>  |                                       | <b>68.4%</b>           | <b>-0.1%</b>                      |
| Variance     | \$1.00      | 1                 | 3,268,523            |                           | 5.3%                           | 1,840,303            | 4.8%                                   | 1,428,220             | 6.0%                                  | -0.28%                 |                                   |
| 2012 to      | \$2.00      | 2                 | -3,495,870           |                           | -2.8%                          | -2,858,675           | -3.5%                                  | -637,195              | -1.5%                                 | -0.47%                 |                                   |
| 2011         | \$3.00      | -2                | 4,727,716            |                           | 4.5%                           | 3,034,358            | 4.4%                                   | 1,693,358             | 4.6%                                  | -0.06%                 |                                   |
|              | \$5.00      | -2                | -2,095,595           |                           | -0.7%                          | -1,713,783           | -0.9%                                  | -381,812              | -0.4%                                 | -0.10%                 |                                   |
|              | \$7.00      | -2                | -18,649,813          |                           | -51.1%                         | -12,672,348          | -51.1%                                 | -5,977,465            | -51.2%                                | 0.03%                  |                                   |
|              | \$10.00     | 1                 | 30,374,890           |                           | 26.7%                          | 21,135,526           | 26.3%                                  | 9,239,364             | 27.6%                                 | -0.22%                 |                                   |
|              | \$20.00     | 0                 | 13,404,520           |                           | 11.8%                          | 10,505,390           | 12.4%                                  | 2,899,130             | 9.9%                                  | 0.44%                  |                                   |
|              | \$50.00     | -1                | -5,721,650           |                           | -18.7%                         | -4,432,279           | -18.7%                                 | -1,289,371            | -18.9%                                | 0.04%                  |                                   |
| <b>Total</b> |             | <b>-3</b>         | <b>\$21,812,721</b>  |                           | <b>2.5%</b>                    | <b>\$14,838,493</b>  | <b>2.5%</b>                            | <b>\$6,974,228</b>    | <b>2.5%</b>                           | <b>-0.01%</b>          |                                   |

Notes - Instant Ticket Variances

Texas Lottery Commission  
**Instant Tickets by Price Point**  
**Sales, Prize Expense, Sales Contribution and Payout Percentage With Year Over Year Changes**  
 Unaudited

|              |             |  | FY 2012       |  | FY 2011       | Difference    |
|--------------|-------------|--|---------------|--|---------------|---------------|
| Sales        | \$1 - \$7   |  | \$593,254,345 |  | \$609,499,384 | -\$16,245,039 |
| Prize Exp.   | \$1 - \$7   |  | \$392,867,903 |  | \$405,238,048 | -\$12,370,144 |
| Sales Cont.  | \$1 - \$7   |  | \$200,386,442 |  | \$204,261,336 | -\$3,874,895  |
| Prize Exp. % | \$1 - \$7   |  | 66.2%         |  | 66.5%         | -0.3%         |
|              |             |  | FY 2012       |  | FY 2011       | Difference    |
| Sales        | \$10 - \$50 |  | \$296,419,190 |  | \$258,361,430 | \$38,057,760  |
| Prize Exp.   | \$10 - \$50 |  | \$215,865,612 |  | \$188,656,975 | \$27,208,637  |
| Sales Cont.  | \$10 - \$50 |  | \$80,553,578  |  | \$69,704,455  | \$10,849,123  |
| Prize Exp. % | \$10 - \$50 |  | 72.8%         |  | 73.0%         | -0.2%         |
|              |             |  | FY 2012       |  | FY 2011       | Difference    |
| Sales        | Instant     |  | \$889,673,535 |  | \$867,860,814 | \$21,812,721  |
| Prize Exp.   | Instant     |  | \$608,733,516 |  | \$593,895,023 | \$14,838,493  |
| Sales Cont.  | Instant     |  | \$280,940,019 |  | \$273,965,791 | \$6,974,228   |
| Prize Exp. % | Instant     |  | 68.4%         |  | 68.4%         | 0.0%          |

|              |             |  | FY 2012       |  | FY 2011       | Difference   |
|--------------|-------------|--|---------------|--|---------------|--------------|
| Sales        | \$1 - \$10  |  | \$737,553,735 |  | \$723,423,884 | \$14,129,851 |
| Prize Exp.   | \$1 - \$10  |  | \$494,482,259 |  | \$485,716,877 | \$8,765,382  |
| Sales Cont.  | \$1 - \$10  |  | \$243,071,476 |  | \$237,707,007 | \$5,364,470  |
| Prize Exp. % | \$1 - \$10  |  | 67.0%         |  | 67.1%         | -0.1%        |
|              |             |  | FY 2012       |  | FY 2011       | Difference   |
| Sales        | \$20 - \$50 |  | \$152,119,800 |  | \$144,436,930 | \$7,682,870  |
| Prize Exp.   | \$20 - \$50 |  | \$114,251,257 |  | \$108,178,146 | \$6,073,111  |
| Sales Cont.  | \$20 - \$50 |  | \$37,868,543  |  | \$36,258,784  | \$1,609,759  |
| Prize Exp. % | \$20 - \$50 |  | 75.1%         |  | 74.9%         | 0.2%         |
|              |             |  | FY 2012       |  | FY 2011       | Difference   |
| Sales        | Instant     |  | \$889,673,535 |  | \$867,860,814 | \$21,812,721 |
| Prize Exp.   | Instant     |  | \$608,733,516 |  | \$593,895,023 | \$14,838,493 |
| Sales Cont.  | Instant     |  | \$280,940,019 |  | \$273,965,791 | \$6,974,228  |
| Prize Exp. % | Instant     |  | 68.4%         |  | 68.4%         | 0.0%         |



Texas Lottery Commission  
**Weekly Sales Summary**  
**& Comparison to Previous Week**  
 Unaudited

|                    | Week Ending<br>12/24/2011 | % of<br>Sales | Week Ending<br>12/17/2011 | % of<br>Sales | \$ change          | % change |
|--------------------|---------------------------|---------------|---------------------------|---------------|--------------------|----------|
|                    | <u>THIS WEEK</u>          |               | <u>LAST WEEK</u>          |               |                    |          |
| Total Sales        | <u>\$83,201,242</u>       |               | <u>\$78,657,908</u>       |               | <u>\$4,543,334</u> | 5.78%    |
| Instant Tickets    | <u>\$60,628,256</u>       | 72.9%         | <u>\$58,612,629</u>       | 74.5%         | <u>\$2,015,627</u> | 3.44%    |
| Lotto              | \$3,265,301               | 3.9%          | \$2,963,151               | 3.8%          | \$302,150          | 10.20%   |
| Pick 3             | \$5,257,800               | 6.3%          | \$5,096,413               | 6.5%          | \$161,387          | 3.17%    |
| Pick 3 Sum It Up   | \$105,568                 | 0.1%          | \$103,606                 | 0.1%          | \$1,963            | 1.89%    |
| Cash Five          | \$1,269,335               | 1.5%          | \$1,257,263               | 1.6%          | \$12,072           | 0.96%    |
| Texas Two Step     | \$943,509                 | 1.1%          | \$1,339,991               | 1.7%          | -\$396,482         | -29.59%  |
| Mega Millions      | \$5,729,832               | 6.9%          | \$4,412,520               | 5.6%          | \$1,317,312        | 29.85%   |
| Megaplier          | \$1,095,360               | 1.3%          | \$882,759                 | 1.1%          | \$212,601          | 24.08%   |
| Daily 4            | \$1,263,815               | 1.5%          | \$1,240,640               | 1.6%          | \$23,175           | 1.87%    |
| Daily 4 Sum It Up  | \$88,757                  | 0.1%          | \$89,229                  | 0.1%          | -\$472             | -0.53%   |
| Powerball          | \$2,933,837               | 3.5%          | \$2,163,468               | 2.8%          | \$770,369          | 35.61%   |
| Power Play         | \$619,872                 | 0.7%          | \$496,239                 | 0.6%          | \$123,633          | 24.91%   |
| Total Online Sales | <u>\$22,572,986</u>       |               | <u>\$20,045,279</u>       |               | <u>\$2,527,707</u> | 12.61%   |

\* Totals may not sum due to rounding.

Texas Lottery Commission  
Weekly Sales Summary  
Unaudited

INSTANT TICKETS  
TOP TEN SELLING GAMES

For the Week Ending : 12/24/11

| Rank | Price Point | Game                      | Sales (Millions) |
|------|-------------|---------------------------|------------------|
| 1    | \$ 10       | SEASON'S GREETINGS        | \$ 4.463         |
| 2    | \$ 5        | SILVER BELLS              | \$ 4.119         |
| 3    | \$ 20       | \$500,000,000 FRENZY      | \$ 4.067         |
| 4    | \$ 20       | MERRY MILLIONAIRE         | \$ 2.940         |
| 5    | \$ 5        | FUNKY 5'S                 | \$ 2.474         |
| 6    | \$ 3        | BONUS CASHWORD            | \$ 1.880         |
| 7    | \$ 5        | GROOVY CASH               | \$ 1.876         |
| 8    | \$ 20       | \$500,000,000 BLOCKBUSTER | \$ 1.857         |
| 9    | \$ 50       | ULTIMATE CASINO JACKPOT   | \$ 1.786         |
| 10   | \$ 5        | MEGA MONEY                | \$ 1.744         |

Texas Lottery Commission  
Prize Payout Tracking Report  
Unaudited

Through Week Ending 12/24/11

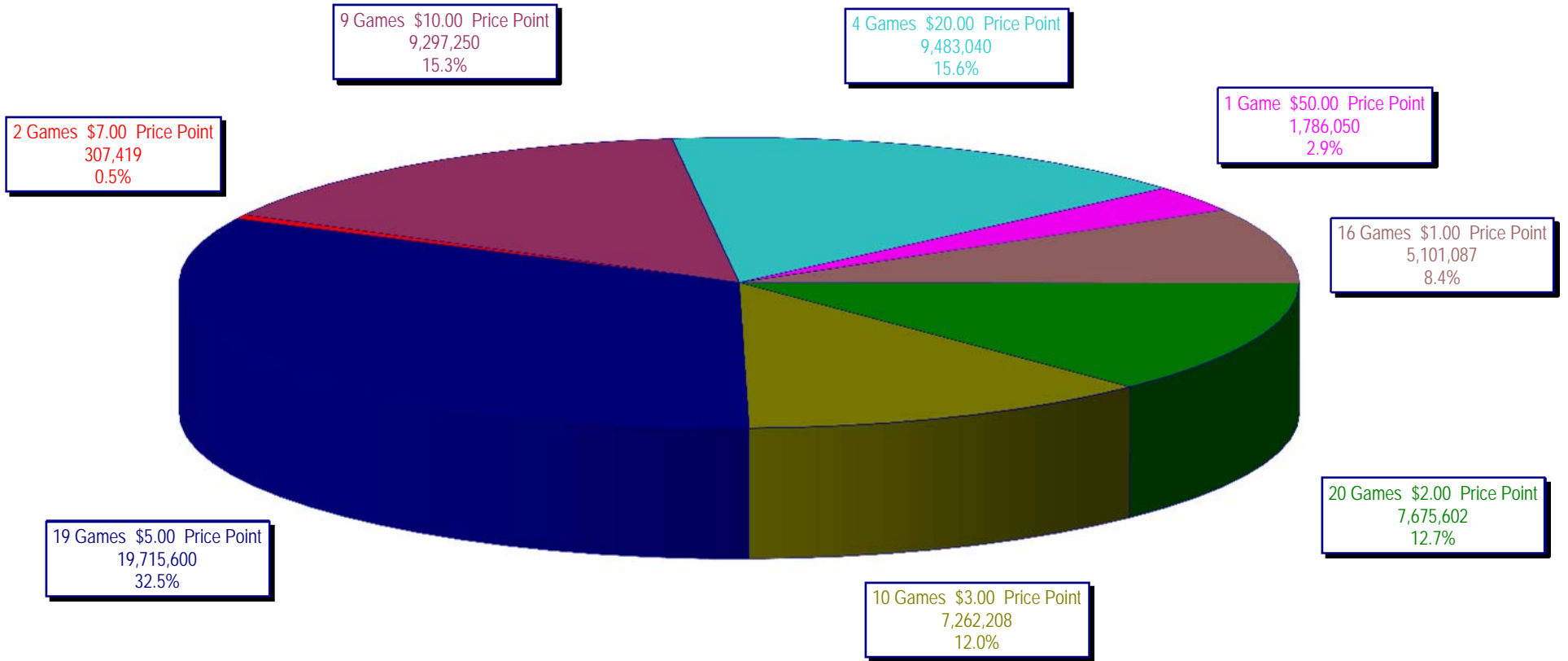
On-Line Sales

|                   |    | FY Sales<br>Through Week<br>Ending<br>12/24/2011 |    | FY Prize Expense<br>Through Week<br>Ending<br>12/24/2011 | Actual*<br>Prize Payout | Base Payout<br>(Prize Pool) |
|-------------------|----|--|----|--|-------------------------|-----------------------------|
| Lotto             | \$ | 55,576,169                                       | \$ | 35,318,243   | 63.55%                  | 50.00%                      |
| Pick 3            |    | 83,253,396                                       |    | 36,187,030   | 43.47%                  | 50.00%                      |
| Pick 3 Sum It Up  |    | 1,691,475  |    | 741,051  | 43.81%                  | 50.00%                      |
| Cash Five         |    | 20,268,212                                       |    | 10,339,538   | 51.01%                  | 50.00%                      |
| Texas Two Step    |    | 19,290,434                                       |    | 9,680,439  | 50.18%                  | 50.00%                      |
| Mega Millions     |    | 49,005,084                                       |    | 23,472,251   | 47.90%                  | 50.00%**                    |
| Megaplier         |    | 10,808,972                                       |    | 5,816,231  | 53.81%                  | N/A                         |
| Daily 4           |    | 19,620,580                                       |    | 8,985,125  | 45.79%                  | 50.00%                      |
| Daily 4 Sum It Up |    | 1,459,743  |    | 568,572  | 38.95%                  | 50.00%                      |
| Powerball         |    | 40,215,499                                       |    | 20,046,611   | 49.85%                  | 50.00%**                    |
| Power Play        |    | 8,780,664  |    | 4,430,313  | 50.46%                  | N/A                         |
| <b>Totals</b>     | \$ | <b>309,970,228</b>                               | \$ | <b>155,585,403</b>                                       | <b>50.19%</b>           |                             |

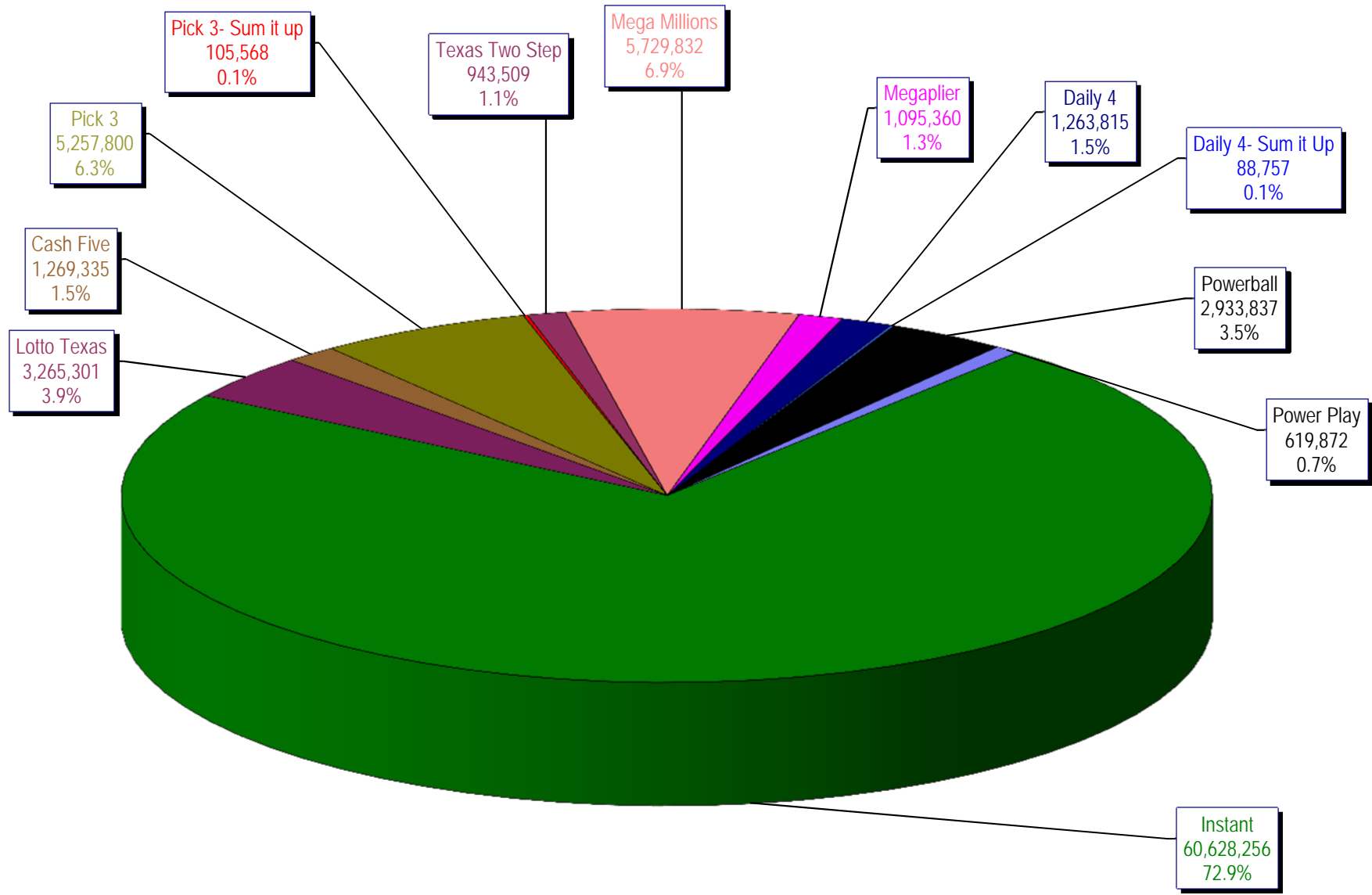
\* Before Unclaimed Prizes

\*\* Estimated; depends on # of guaranteed prizes won in Texas

Texas Lottery Commission  
Instant Ticket Sales  
For the Week Ending 12/24/11  
(Unaudited)



**Texas Lottery Commission  
All Game Sales  
For the Week Ending 12/24/11  
(Unaudited)**



Texas Lottery Commission - Weekly Sales Summary for FY 2012 (Unaudited)

| Week Ended               | Instant Games  | New Games & Dates   | Lotto Texas    | Jackpot<br>W S |    | Pick 3        | Pick 3<br>Sum It Up | Cash Five     | Texas Two Step | Jackpot<br>M TH |       | Mega Millions | Jackpot<br>T F |     | Megaplier    | Daily 4      | Daily 4<br>Sum It Up | Powerball    | Jackpot<br>W S |     | Power Play   | Total          | Per<br>Cap.       |
|--------------------------|----------------|---|----------------|----------------|----|---------------|---------------------|---------------|----------------|-----------------|-------|---------------|----------------|-----|--------------|--------------|----------------------|--------------|----------------|-----|--------------|----------------|-------------------|
| 9/3/2011                 | 52,421,985     | 1340 (\$1,N); 1310 (\$2, N) - 08/29/11                          | 3,710,974      | 23             | 24 | 5,228,940     | 100,997             | 1,239,134     | 989,988        | 225             | 300   | 2,248,664     | 21             | 29  | 539,246      | 1,221,178    | 93,318               | 2,401,555    | 75             | 91  | 530,686      | 70,726,664     | 2.81              |
| 9/10/2011                | 50,591,068     | 1360 (\$3, N) - 09/05/11  | 3,329,350      | 25             | 4  | 5,103,026     | 99,259              | 1,198,563     | 935,771        | 450             | 200   | 2,387,766     | 37             | 44  | 557,225      | 1,180,505    | 88,443               | 2,295,315    | 107            | 20  | 506,631      | 68,272,921     | 2.71              |
| 9/17/2011                | 49,835,063     | 0   | 3,031,798      | 5              | 6  | 4,953,079     | 100,990             | 1,210,562     | 961,592        | 225             | 300   | 2,801,526     | 54             | 65  | 626,459      | 1,125,230    | 83,532               | 1,560,522    | 25             | 20  | 387,037      | 66,677,389     | 2.64              |
| 9/24/2011                | 49,777,138     | 1362(\$1, N); 1363(\$5,N); 1364(\$5,N) - 09/19/11               | 3,083,973      | 7              | 8  | 4,819,453     | 97,999              | 1,200,444     | 1,283,472      | 450             | 600   | 3,206,022     | 75             | 86  | 692,909      | 1,092,294    | 82,198               | 1,561,655    | 25             | 30  | 384,383      | 67,281,938     | 2.67              |
| 10/1/2011                | 51,040,274     | 1365(\$2,N) - 09/26/11  | 3,196,730      | 9              | 10 | 4,846,896     | 97,026              | 1,215,715     | 1,146,613      | 800             | 200   | 4,033,330     | 96             | 113 | 830,660      | 1,096,271    | 83,993               | 1,693,809    | 37             | 47  | 412,058      | 69,693,374     | 2.76              |
| 10/8/2011                | 53,715,157     | 1366(\$1,N) - 10/03/11  | 3,231,892      | 11             | 12 | 5,064,771     | 102,919             | 1,252,733     | 1,004,251      | 225             | 300   | 2,176,684     | 12             | 14  | 527,777      | 1,188,636    | 92,825               | 2,103,034    | 58             | 71  | 480,159      | 70,940,837     | 2.81              |
| 10/15/2011               | 51,942,121     | 1367 (\$7, N) - 10/10/11  | 3,230,925      | 13             | 14 | 4,776,985     | 99,008              | 1,214,385     | 1,337,436      | 450             | 625   | 2,260,036     | 22             | 30  | 542,787      | 1,132,415    | 84,772               | 2,613,215    | 86             | 105 | 563,017      | 69,797,101     | 2.77              |
| 10/22/2011               | 52,837,769     | 1369 (\$1, N); 1370 (\$5, N) - 10/17/11                         | 3,250,317      | 15             | 16 | 4,784,201     | 98,306              | 1,202,768     | 1,887,302      | 825             | 1,050 | 2,386,255     | 39             | 48  | 561,705      | 1,130,353    | 83,722               | 3,477,867    | 124            | 148 | 695,724      | 72,396,288     | 2.87              |
| 10/29/2011               | 52,206,644     | 1371 (\$2, N) - 10/24/11  | 3,302,201      | 17             | 18 | 4,685,786     | 95,887              | 1,186,987     | 2,055,399      | 1,300           | 1,550 | 2,592,752     | 57             | 67  | 596,631      | 1,107,441    | 82,921               | 4,895,300    | 173            | 203 | 903,261      | 73,711,209     | 2.92              |
| 11/5/2011                | 56,265,310     | 1373 (\$10, N) - 10/31/11                                       | 3,570,825      | 19             | 20 | 5,165,835     | 105,793             | 1,240,514     | 910,036        | 200             | 200   | 2,497,308     | 78             | 12  | 583,481      | 1,222,706    | 92,619               | 4,617,172    | 245            | 20  | 863,799      | 77,135,396     | 3.06              |
| 11/12/2011               | 55,682,645     | 1375 (\$3, N); 1374 (\$1, N) - 11/07/11                         | 3,673,137      | 21             | 22 | 5,298,645     | 109,575             | 1,268,630     | 961,349        | 225             | 200   | 2,362,698     | 15             | 22  | 552,133      | 1,235,272    | 92,025               | 1,861,697    | 25             | 35  | 447,243      | 73,545,049     | 2.92              |
| 11/19/2011               | 54,978,079     | 1376(\$2, N); 1377 (\$5, N) - 11/14/11                          | 3,575,231      | 23             | 24 | 5,216,095     | 106,956             | 1,246,366     | 1,059,355      | 225             | 325   | 2,300,050     | 30             | 40  | 550,825      | 1,224,365    | 89,978               | 2,033,222    | 46             | 60  | 477,542      | 72,858,064     | 2.89              |
| 11/26/2011               | 53,942,448     | 1372 (\$5, N) - 11/21/11  | 3,499,908      | 25             | 26 | 4,943,420     | 100,352             | 1,179,174     | 998,175        | 500             | 200   | 2,377,399     | 47             | 55  | 555,760      | 1,215,090    | 90,416               | 1,527,546    | 20             | 25  | 389,905      | 70,819,593     | 2.81              |
| 12/3/2011                | 57,153,469     | 0   | 3,744,456      | 27             | 28 | 5,267,602     | 108,544             | 1,264,649     | 938,225        | 225             | 200   | 2,830,996     | 64             | 75  | 636,924      | 1,278,857    | 95,379               | 1,708,763    | 31             | 40  | 424,242      | 75,452,105     | 2.99              |
| 12/10/2011               | 55,318,284     | 1378 (\$1, N); 1322 (\$5, N) - 12/5/11; 1389 (\$1, N) - 12/6/11 | 3,666,072      | 29             | 30 | 5,168,509     | 106,265             | 1,243,957     | 1,030,979      | 225             | 325   | 3,462,326     | 87             | 100 | 736,281      | 1,235,834    | 89,131               | 1,850,570    | 52             | 67  | 443,403      | 74,351,610     | 2.95              |
| 12/17/2011               | 58,612,629     | 1383 (\$3,N) - 12/12/11   | 2,963,151      | 4              | 5  | 5,096,413     | 103,606             | 1,257,263     | 1,339,991      | 475             | 650   | 4,412,520     | 116            | 135 | 882,759      | 1,240,640    | 89,229               | 2,163,468    | 78             | 91  | 496,239      | 78,657,908     | 3.12              |
| 12/24/2011               | 60,628,256     | 1379 (\$1, N); 1317 (\$2, N); 1380 (\$5, N) - 12/19/11          | 3,265,301      | 6              | 7  | 5,257,800     | 105,568             | 1,269,335     | 943,509        | 200             | 225   | 5,729,832     | 152            | 173 | 1,095,360    | 1,263,815    | 88,757               | 2,933,837    | 104            | 125 | 619,872      | 83,201,242     | 3.30              |
| weekly change            | 3.4%           |   | 10.2%          |                |    | 3.2%          | 1.9%                | 1.0%          | -29.6%         |                 |       | 29.9%         |                |     | 24.1%        | 1.9%         | -0.5%                | 35.6%        |                |     | 24.9%        | 5.8%           |                   |
|                          | <b>SALES</b>   |   | <b>SALES</b>   |                |    | <b>SALES</b>  | <b>SALES</b>        | <b>SALES</b>  | <b>SALES</b>   |                 |       | <b>SALES</b>  |                |     | <b>SALES</b> | <b>SALES</b> | <b>SALES</b>         | <b>SALES</b> |                |     | <b>SALES</b> | <b>SALES</b>   | <b>% of Sales</b> |
| Startup to date          | 42,765,031,737 |   | 10,963,582,228 |                |    | 4,210,613,717 | 24,994,807          | 2,341,176,873 | 597,124,901    |                 |       | 1,534,436,809 |                |     | 350,944,143  | 220,623,269  | 24,429,183           | 196,607,383  |                |     | 45,044,009   | 63,482,743,030 | 100.0%            |
| Calendar Year to date    | 2,810,135,070  |   | 172,135,702    |                |    | 266,982,032   | 123,957             | 63,601,551    | 53,892,185     |                 |       | 169,213,921   |                |     | 36,290,373   | 59,475,928   | 4,413,377            | 113,665,891  |                |     | 25,227,739   | 3,775,157,725  | 100.0%            |
| Fiscal Year to date 2012 | 889,673,535    |   | 55,576,169     |                |    | 83,253,396    | 1,691,475           | 20,268,212    | 19,290,434     |                 |       | 49,005,084    |                |     | 10,808,972   | 19,620,580   | 1,459,743            | 40,215,499   |                |     | 8,780,664    | 1,199,643,763  | 100.0%            |