



*WEEKLY SALES SUMMARY*

Unaudited

**Week Ending: 12/24/2016**

Texas Lottery Commission  
Fiscal Year to Date Sales Comparison  
Unaudited

Through the Week Ending 12/24/2016 (17 Weeks)

Sales by Game	FY 2015 *	FY 2016 **	FY 2017	\$ Change		% Change	
				FY 2017 to FY 2015	FY 2017 to FY 2016	FY 2017 to FY 2015	FY 2017 to FY 2016
Scratch Tickets	\$ 1,075,234,265	\$ 1,113,012,293	\$ 1,161,294,370	\$ 86,060,105	\$ 48,282,077	8.0%	4.3%
Lotto Texas	39,252,998	40,536,473	34,767,105	-4,485,893	-5,769,368	-11.4%	-14.2%
Lotto Extra	5,924,368	6,859,308	6,657,644	733,276	-201,664	12.4%	-2.9%
Pick 3	80,979,126	81,065,757	77,447,692	-3,531,435	-3,618,065	-4.4%	-4.5%
Pick 3 Sum It Up	1,543,364	1,608,670	1,470,185	-73,179	-138,485	-4.7%	-8.6%
Cash Five	16,107,011	14,910,480	13,839,628	-2,267,383	-1,070,852	-14.1%	-7.2%
Texas Two Step	17,924,908	16,838,424	17,678,355	-246,553	839,931	-1.4%	5.0%
Mega Millions	51,804,944	40,588,311	32,529,813	-19,275,131	-8,058,498	-37.2%	-19.9%
Megaplier	11,761,950	10,144,778	8,960,816	-2,801,134	-1,183,962	-23.8%	-11.7%
Daily 4	27,329,521	27,978,199	29,007,681	1,678,160	1,029,482	6.1%	3.7%
Daily 4 Sum It Up	1,632,265	1,440,835	1,520,931	-111,335	80,096	-6.8%	5.6%
Powerball	54,587,131	67,207,895	71,517,289	16,930,158	4,309,394	31.0%	6.4%
Power Play	7,184,768	8,743,267	10,029,895	2,845,127	1,286,628	39.6%	14.7%
All or Nothing	12,658,176	10,042,132	9,158,992	-3,499,184	-883,140	-27.6%	-8.8%
Monopoly	1 2,656,700	-	-	-2,656,700	-	-100.0%	-
Texas Triple Chance	-	8,812,869	5,018,298	5,018,298	-3,794,571	-	-43.1%
<b>Total</b>	<b>\$ 1,406,581,495</b>	<b>\$ 1,449,789,690</b>	<b>\$ 1,480,898,693</b>	<b>\$ 74,317,198</b>	<b>\$ 31,109,003</b>	<b>5.3%</b>	<b>2.1%</b>

\* 3 extra days

\*\* 2 extra days

1 Monopoly sales were suspended after draw on 12/12/14

Texas Lottery Commission  
Fiscal Year to Date Cumulative Average Sales Comparison  
Unaudited

Through the Week Ending 12/24/2016 (17 Weeks)

Sales by Game	FY 2015	FY 2016	FY 2017
Scratch Tickets	\$ 9,112,155	\$ 9,512,926	\$ 10,098,212
Lotto Texas	332,653	346,466	302,323
Lotto Extra	50,207	58,627	57,893
Pick 3	686,264	692,870	673,458
Pick 3 Sum It Up	13,079	13,749	12,784
Cash Five	136,500	127,440	120,345
Texas Two Step	151,906	143,918	153,725
Mega Millions	439,025	346,909	282,868
Megaplier	99,678	86,708	77,920
Daily 4	231,606	239,130	252,241
Daily 4 Sum It Up	13,833	12,315	13,225
Powerball	462,603	574,426	621,889
Power Play	60,888	74,729	87,216
All or Nothing	107,273	85,830	79,643
Monopoly	** 48,304	-	-
Texas Triple Chance	- *	96,845	43,637
<b>Total</b>	<b>\$ 11,945,971</b>	<b>\$ 12,412,886</b>	<b>\$ 12,877,380</b>

thru 12/27/2014

118 days

\*\*

55 days

thru 12/26/2015

117 days

\*

91 days

thru 12/24/2016

115 days

Texas Lottery Commission  
Fiscal Year Over Year Change in Sales  
Unaudited  
FY 2017 Compared to FY 2016

			SCRATCH TICKETS				DRAW GAMES				TOTAL SALES			
Week	FY 2017		FY 2016	Difference	% change - Cumulative Sales	FY 2017	FY 2016	Difference	% change - Cumulative Sales	FY 2017	FY 2016	Difference	% change - Cumulative Sales	
	Week	Ending												
1	9/3/2016 *		\$32,980,266	\$49,534,249	(\$16,553,983)	-33.4%	\$10,218,656	\$17,091,724	(\$6,873,068)	-40.2%	\$43,198,922	\$66,625,973	(\$23,427,051)	-35.2%
2	9/10/2016		\$65,952,418	\$61,566,291	\$4,386,127	7.1%	\$19,635,377	\$20,630,922	(\$995,545)	-4.8%	\$85,587,795	\$82,197,213	\$3,390,583	4.1%
3	9/17/2016		\$66,196,270	\$63,530,657	\$2,665,613	4.2%	\$20,915,290	\$20,327,253	\$588,037	2.9%	\$87,111,560	\$83,857,910	\$3,253,650	3.9%
4	9/24/2016		\$64,383,005	\$61,731,400	\$2,651,605	4.3%	\$17,451,165	\$22,252,290	(\$4,801,125)	-21.6%	\$81,834,170	\$83,983,690	(\$2,149,520)	-2.6%
5	10/1/2016		\$67,349,951	\$67,048,415	\$301,536	0.4%	\$17,519,852	\$25,436,791	(\$7,916,939)	-31.1%	\$84,869,803	\$92,485,206	(\$7,615,403)	-8.2%
6	10/8/2016		\$71,598,690	\$66,049,706	\$5,548,984	8.4%	\$18,211,107	\$18,138,977	\$72,130	0.4%	\$89,809,797	\$84,188,683	\$5,621,114	6.7%
7	10/15/2016		\$69,444,762	\$65,073,593	\$4,371,169	6.7%	\$18,075,261	\$17,776,414	\$298,847	1.7%	\$87,520,023	\$82,850,007	\$4,670,016	5.6%
8	10/22/2016		\$69,317,066	\$64,087,437	\$5,229,629	8.2%	\$18,422,336	\$18,450,464	(\$28,128)	-0.2%	\$87,739,402	\$82,537,901	\$5,201,501	6.3%
9	10/29/2016		\$69,729,599	\$66,025,374	\$3,704,225	5.6%	\$18,535,248	\$19,568,150	(\$1,032,902)	-5.3%	\$88,264,847	\$85,593,524	\$2,671,324	3.1%
10	11/5/2016		\$73,451,702	\$68,137,192	\$5,314,510	7.8%	\$20,151,939	\$20,398,351	(\$246,413)	-1.2%	\$93,603,641	\$88,535,543	\$5,068,098	5.7%
11	11/12/2016		\$70,998,320	\$65,449,428	\$5,548,892	8.5%	\$19,925,460	\$20,169,382	(\$243,923)	-1.2%	\$90,923,780	\$85,618,810	\$5,304,970	6.2%
12	11/19/2016		\$75,265,196	\$68,364,421	\$6,900,775	10.1%	\$21,424,637	\$17,174,606	\$4,250,031	24.7%	\$96,689,833	\$85,539,027	\$11,150,806	13.0%
13	11/26/2016		\$68,983,157	\$61,091,628	\$7,891,529	12.9%	\$24,223,331	\$17,168,993	\$7,054,338	41.1%	\$93,206,488	\$78,260,621	\$14,945,867	19.1%
14	12/3/2016		\$72,688,514	\$67,830,827	\$4,857,687	7.2%	\$17,653,328	\$19,252,418	(\$1,599,090)	-8.3%	\$90,341,842	\$87,083,245	\$3,258,597	3.7%
15	12/10/2016		\$71,676,549	\$68,324,452	\$3,352,097	4.9%	\$18,150,590	\$19,529,408	(\$1,378,819)	-7.1%	\$89,827,139	\$87,853,860	\$1,973,279	2.2%
16	12/17/2016		\$73,909,726	\$71,041,258	\$2,868,468	4.0%	\$19,814,333	\$20,824,840	(\$1,010,507)	-4.9%	\$93,724,059	\$91,866,098	\$1,857,962	2.0%
17	12/24/2016		\$77,369,179	\$78,125,965	(\$756,786)	-1.0%	\$19,276,415	\$22,586,417	(\$3,310,002)	-14.7%	\$96,645,594	\$100,712,382	(\$4,066,788)	-4.0%
18	12/31/2016			\$76,712,975				\$27,972,880				\$104,685,855		
19	1/7/2017			\$77,136,541				\$127,289,478				\$204,426,019		
20	1/14/2017			\$73,858,865				\$140,104,126				\$213,962,991		
21	1/21/2017			\$70,665,700				\$20,781,745				\$91,447,445		
22	1/28/2017			\$71,051,685				\$20,433,401				\$91,485,086		
23	2/4/2017			\$78,458,428				\$21,274,800				\$99,733,228		
24	2/11/2017			\$80,754,850				\$21,391,919				\$102,146,769		
25	2/18/2017			\$80,078,271				\$21,911,382				\$101,989,653		
26	2/25/2017			\$78,832,217				\$22,823,086				\$101,655,303		
27	3/4/2017			\$80,019,524				\$23,146,906				\$103,166,430		
28	3/11/2017			\$78,524,214				\$19,311,625				\$97,835,839		
29	3/18/2017			\$75,446,960				\$18,001,000				\$93,447,960		
30	3/25/2017			\$75,293,759				\$18,553,964				\$93,847,723		
31	4/1/2017			\$79,316,221				\$19,482,563				\$98,798,784		
32	4/8/2017			\$74,560,898				\$20,100,629				\$94,661,527		
33	4/15/2017			\$74,056,586				\$20,677,413				\$94,733,999		
34	4/22/2017			\$73,110,080				\$20,313,339				\$93,423,419		
35	4/29/2017			\$73,448,019				\$22,666,626				\$96,114,645		
36	5/6/2017			\$77,593,399				\$33,262,968				\$110,856,367		
37	5/13/2017			\$75,263,676				\$20,250,149				\$95,513,825		
38	5/20/2017			\$74,274,808				\$19,605,983				\$93,880,791		
39	5/27/2017			\$71,562,728				\$20,150,232				\$91,712,960		
40	6/3/2017			\$73,085,109				\$21,067,550				\$94,152,659		
41	6/10/2017			\$70,593,768				\$21,389,794				\$91,983,562		
42	6/17/2017			\$69,501,864				\$22,402,713				\$91,904,577		

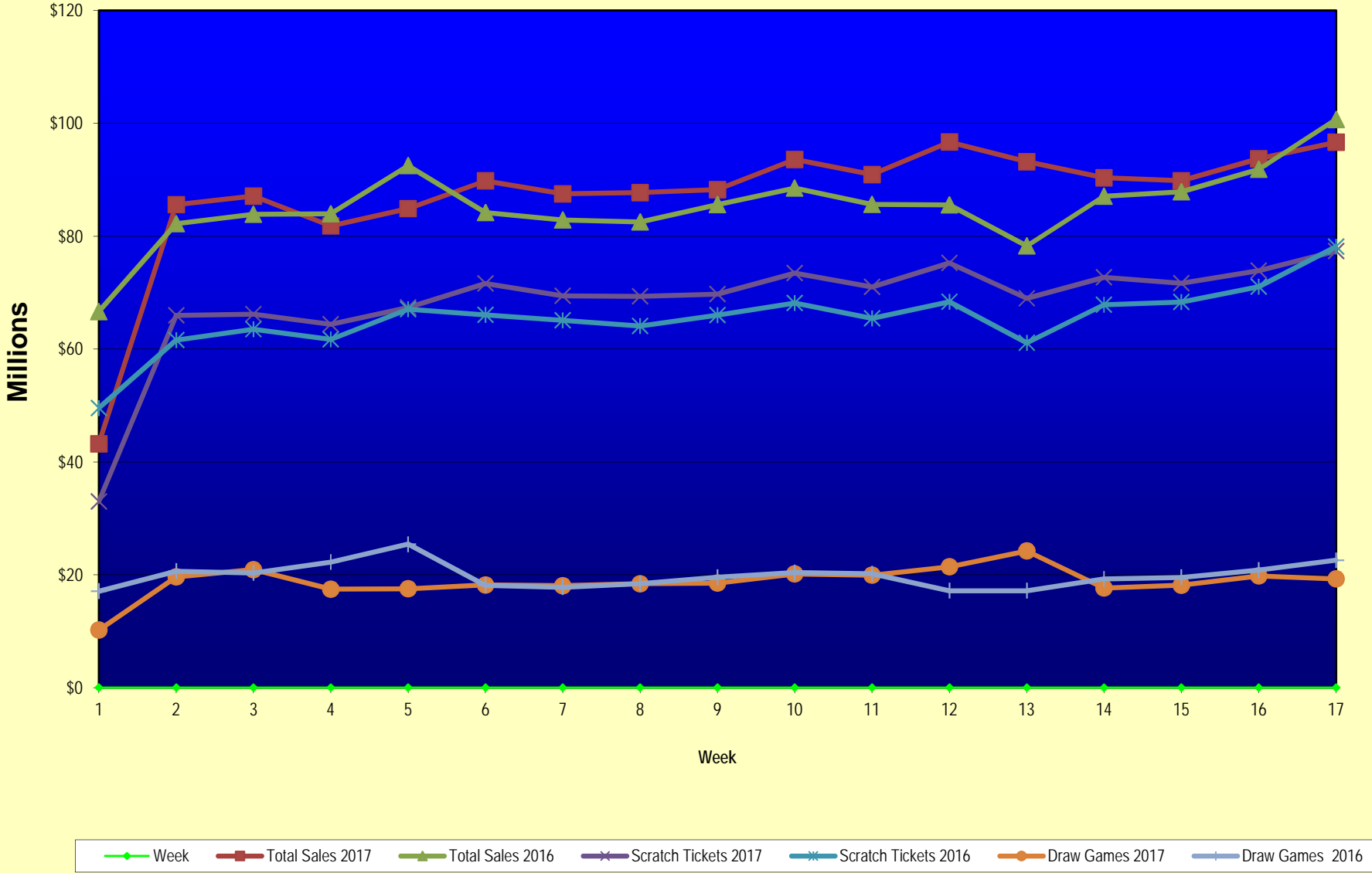
Texas Lottery Commission  
Fiscal Year Over Year Change in Sales  
Unaudited  
FY 2017 Compared to FY 2016

			SCRATCH TICKETS				DRAW GAMES				TOTAL SALES			
FY 2017			FY 2017	FY 2016	Difference	% change - Cumulative Sales	FY 2017	FY 2016	Difference	% change - Cumulative Sales	FY 2017	FY 2016	Difference	% change - Cumulative Sales
Week	Week	Ending												
43	6/24/2017			\$69,243,660				\$24,290,311				\$93,533,971		
44	7/1/2017			\$70,782,313				\$29,331,406				\$100,113,719		
45	7/8/2017			\$67,636,625				\$38,673,314				\$106,309,939		
46	7/15/2017			\$68,064,720				\$21,311,938				\$89,376,658		
47	7/22/2017			\$69,509,821				\$21,982,689				\$91,492,510		
48	7/29/2017			\$64,486,970				\$30,699,953				\$95,186,923		
49	8/5/2017			\$69,206,183				\$18,277,075				\$87,483,258		
50	8/12/2017			\$67,165,060				\$18,101,640				\$85,266,700		
51	8/19/2017			\$69,067,938				\$18,981,681				\$88,049,619		
52	8/26/2017			\$67,821,162				\$19,606,571				\$87,427,733		
	8/31/2017 **			\$36,609,542				\$9,310,254				\$45,919,796		
Total thru Current Week			\$1,161,294,370	\$1,113,012,293	\$48,282,077	4.3%	\$319,604,323	\$336,777,397	(\$17,173,074)	-5.1%	\$1,480,898,693	\$1,449,789,690	\$31,109,003	2.1%
Fiscal Year Total			\$1,161,294,370	\$3,715,807,432			\$319,604,323	\$1,351,710,491			\$1,480,898,693	\$5,067,517,923		

\* FY 17 includes 3 days; FY 16 includes 5 days

\*\* FY 17 includes 5 days; FY 16 includes 4 days

### Texas Lottery Commission Fiscal Year Over Year Change in Sales



Note: Week 1 is not a full week of sales as this report is prepared on a Fiscal Year basis.

Texas Lottery Commission  
Scratch Tickets by Price Point  
Sales, Prize Expense, Sales Contribution and Payout Percentage With Year Over Year Changes  
Unaudited

Fiscal Year	Price Point	# of Active Games	FY Sales	% of Scratch Ticket Sales	Year over Year Change in Sales	FY Prize Expense	Year over Year Change in Prize Expense	FY Sales Contribution	Year over Year Change in Contribution	Average Prize Payout %	Year over Year Change in Payout %
2016	\$1.00	14	49,448,282	4.4%		29,893,491		19,554,791		60.5%	-0.1%
Through	\$2.00	26	112,844,818	10.1%		73,418,774		39,426,044		65.1%	-0.7%
12/26/2015	\$3.00	10	89,453,163	8.0%		58,868,926		30,584,237		65.8%	-0.2%
	\$5.00	42	361,769,270	32.5%		245,788,683		115,980,587		67.9%	0.0%
	\$10.00	14	219,546,310	19.7%		153,815,182		65,731,128		70.1%	-0.3%
	\$20.00	10	225,083,400	20.2%		168,684,392		56,399,008		74.9%	0.0%
	\$50.00	3	54,867,050	4.9%		42,672,395		12,194,655		77.8%	0.0%
<b>Total</b>		<b>119</b>	<b>\$1,113,012,293</b>			<b>\$773,141,842</b>		<b>\$339,870,451</b>		<b>69.5%</b>	<b>0.0%</b>
2017	\$1.00	17	46,428,998	4.0%		28,065,739		18,363,259		60.4%	0.4%
Through	\$2.00	23	97,208,484	8.4%		63,328,664		33,879,820		65.1%	0.0%
12/24/2016	\$3.00	8	80,121,858	6.9%		52,814,922		27,306,936		65.9%	0.0%
	\$5.00	41	366,982,580	31.6%		249,348,761		117,633,819		67.9%	0.0%
	\$10.00	16	243,735,350	21.0%		171,963,479		71,771,871		70.6%	0.6%
	\$20.00	11	267,389,700	23.0%		200,359,949		67,029,751		74.9%	0.0%
	\$50.00	4	59,427,400	5.1%		46,242,293		13,185,107		77.8%	0.0%
<b>Total</b>		<b>120</b>	<b>\$1,161,294,370</b>			<b>\$812,123,808</b>		<b>\$349,170,562</b>		<b>69.9%</b>	<b>0.5%</b>
Variance	\$1.00	3	-3,019,284		-6.1%	-1,827,752	-6.1%	-1,191,532	-6.1%	-0.01%	
2017 to	\$2.00	-3	-15,636,334		-13.9%	-10,090,110	-13.7%	-5,546,224	-14.1%	0.09%	
2016	\$3.00	-2	-9,331,305		-10.4%	-6,054,004	-10.3%	-3,277,301	-10.7%	0.11%	
	\$5.00	-1	5,213,310		1.4%	3,560,078	1.4%	1,653,232	1.4%	0.00%	
	\$10.00	2	24,189,040		11.0%	18,148,297	11.8%	6,040,743	9.2%	0.49%	
	\$20.00	1	42,306,300		18.8%	31,675,557	18.8%	10,630,743	18.8%	-0.01%	
	\$50.00	1	4,560,350		8.3%	3,569,898	8.4%	990,452	8.1%	0.04%	
<b>Total</b>		<b>1</b>	<b>\$48,282,077</b>		<b>4.3%</b>	<b>\$38,981,965</b>	<b>5.0%</b>	<b>\$9,300,112</b>	<b>2.7%</b>	<b>0.47%</b>	

Notes - Scratch Ticket Variances

Texas Lottery Commission  
Scratch Tickets by Price Point  
Sales, Prize Expense, Sales Contribution and Payout Percentage With Year Over Year Changes  
Unaudited

			FY 2017		FY 2016	Difference
Sales	\$1 - \$5		\$590,741,920		\$613,515,533	-\$22,773,613
Prize Exp.	\$1 - \$5		\$393,558,086		\$407,969,874	-\$14,411,788
Sales Cont.	\$1 - \$5		\$197,183,834		\$205,545,659	-\$8,361,825
Prize Exp. %	\$1 - \$5		66.6%		66.5%	0.1%
			FY 2017		FY 2016	Difference
Sales	\$10 - \$50		\$570,552,450		\$499,496,760	\$71,055,690
Prize Exp.	\$10 - \$50		\$418,565,721		\$365,171,968	\$53,393,753
Sales Cont.	\$10 - \$50		\$151,986,729		\$134,324,792	\$17,661,937
Prize Exp. %	\$10 - \$50		73.4%		73.1%	0.3%
			FY 2017		FY 2016	Difference
Sales	Scratch		\$1,161,294,370		\$1,113,012,293	\$48,282,077
Prize Exp.	Scratch		\$812,123,808		\$773,141,842	\$38,981,965
Sales Cont.	Scratch		\$349,170,562		\$339,870,451	\$9,300,112
Prize Exp. %	Scratch		69.9%		69.5%	0.5%

			FY 2017		FY 2016	Difference
Sales	\$1 - \$10		\$834,477,270		\$833,061,843	\$1,415,427
Prize Exp.	\$1 - \$10		\$565,521,565		\$561,785,056	\$3,736,510
Sales Cont.	\$1 - \$10		\$268,955,705		\$271,276,787	-\$2,321,083
Prize Exp. %	\$1 - \$10		67.8%		67.4%	0.3%
			FY 2017		FY 2016	Difference
Sales	\$20 - \$50		\$326,817,100		\$279,950,450	\$46,866,650
Prize Exp.	\$20 - \$50		\$246,602,242		\$211,356,787	\$35,245,456
Sales Cont.	\$20 - \$50		\$80,214,858		\$68,593,663	\$11,621,194
Prize Exp. %	\$20 - \$50		75.5%		75.5%	0.0%
			FY 2017		FY 2016	Difference
Sales	Scratch		\$1,161,294,370		\$1,113,012,293	\$48,282,077
Prize Exp.	Scratch		\$812,123,808		\$773,141,842	\$38,981,965
Sales Cont.	Scratch		\$349,170,562		\$339,870,451	\$9,300,112
Prize Exp. %	Scratch		69.9%		69.5%	0.5%



Texas Lottery Commission  
**Weekly Sales Summary**  
**& Comparison to Previous Week**  
Unaudited

	Week Ending 12/24/2016	% of Sales	Week Ending 12/17/2016	% of Sales	\$ change	% change
	<u>THIS WEEK</u>		<u>LAST WEEK</u>			
Total Sales	<u>\$96,645,594</u>		<u>\$93,724,059</u>		<u>\$2,921,535</u>	3.12%
Scratch Tickets	<u>\$77,369,179</u>	80.1%	<u>\$73,909,726</u>	78.9%	<u>\$3,459,453</u>	4.68%
Lotto	\$2,210,042	2.3%	\$2,048,592	2.2%	\$161,450	7.88%
Lotto Extra	\$421,128	0.4%	\$398,632	0.4%	\$22,496	5.64%
Pick 3	\$4,973,874	5.1%	\$4,778,144	5.1%	\$195,730	4.10%
Pick 3 Sum It Up	\$91,323	0.1%	\$88,676	0.1%	\$2,648	2.99%
Cash Five	\$861,510	0.9%	\$854,061	0.9%	\$7,449	0.87%
Texas Two Step	\$1,331,122	1.4%	\$1,906,792	2.0%	-\$575,670	-30.19%
Mega Millions	\$2,200,791	2.3%	\$1,966,377	2.1%	\$234,414	11.92%
Megaplier	\$590,601	0.6%	\$539,946	0.6%	\$50,655	9.38%
Daily 4	\$2,035,860	2.1%	\$1,844,818	2.0%	\$191,042	10.36%
Daily 4 Sum It Up	\$117,672	0.1%	\$94,354	0.1%	\$23,319	24.71%
Powerball	\$3,119,154	3.2%	\$3,892,738	4.2%	-\$773,584	-19.87%
Power Play	\$473,229	0.5%	\$561,900	0.6%	-\$88,671	-15.78%
All or Nothing	\$558,224	0.6%	\$551,086	0.6%	\$7,138	1.30%
Texas Triple Chance	\$291,886	0.3%	\$288,218	0.3%	\$3,668	1.27%
Total Draw Game Sales	<u>\$19,276,415</u>		<u>\$19,814,333</u>		<u>-\$537,918</u>	-2.71%

\* Totals may not sum due to rounding.

Texas Lottery Commission  
Weekly Sales Summary  
Unaudited

SCRATCH TICKETS  
TOP TEN SELLING GAMES

For the week ending: 12/24/2016

Rank	Price Point	Game	Sales (Millions)
1	\$ 10	HOLIDAY COUNTDOWN SUPER TICKET	\$ 4.377
2	\$ 10	\$1 MILLION HIGH ROLLER	\$ 3.716
3	\$ 10	CASHWORD MULTIPLIER	\$ 3.483
4	\$ 20	100X THE CASH	\$ 3.468
5	\$ 50	\$7,500,000 ULTIMATE CASH	\$ 3.363
6	\$ 5	20X THE CASH	\$ 3.144
7	\$ 20	SUPER BREAK THE BANK	\$ 2.890
8	\$ 5	SUPER LOTERIA	\$ 2.851
9	\$ 5	GARLAND RICHES	\$ 2.753
10	\$ 20	WINNERS GALORE	\$ 2.524

Texas Lottery Commission  
Prize Payout Tracking Report  
Unaudited

Through the week ending: 12/24/2016

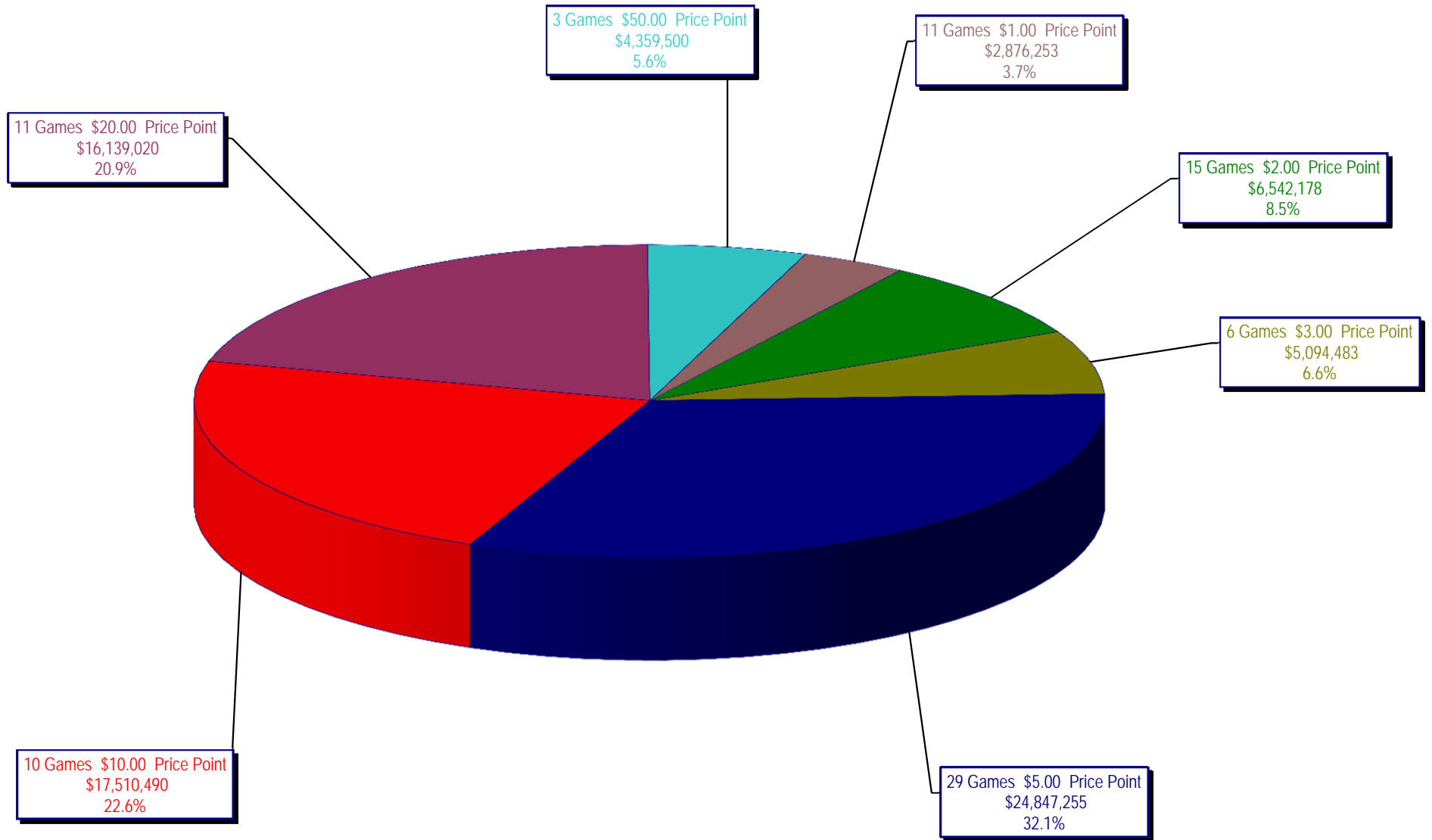
Draw Game Sales

		FY Sales Through Week Ending 12/24/2016		FY Prize Expense Through Week Ending 12/24/2016	Actual* Prize Payout	Base Payout (Prize Pool)
Lotto	\$	34,767,105	\$	17,390,649	50.02%	50.00%
Lotto Extra		6,657,644		3,556,126	53.41%	53.70%
Pick 3		77,447,692		38,853,630	50.17%	50.00%
Pick 3 Sum It Up		1,470,185		675,809	45.97%	50.00%
Cash Five		13,839,628		6,919,898	50.00%	50.00%
Texas Two Step		17,678,355		9,143,459	51.72%	50.00%
Mega Millions		32,529,813		16,594,062	51.01%	50.00%**
Megaplier		8,960,816		4,483,314	50.03%	N/A
Daily 4		29,007,681		18,596,300	64.11%	50.00%
Daily 4 Sum It Up		1,520,931		2,217,694	145.81%	50.00%
Powerball		71,517,289		35,777,655	50.03%	50.00%**
Power Play		10,029,895		5,019,204	50.04%	N/A
All or Nothing		9,158,992		4,821,434	52.64%	55.98%
Texas Triple Chance		5,018,298		2,587,520	51.56%	54.42%
<b>Totals</b>	\$	<b>319,604,323</b>	\$	<b>166,636,752</b>	<b>52.14%</b>	

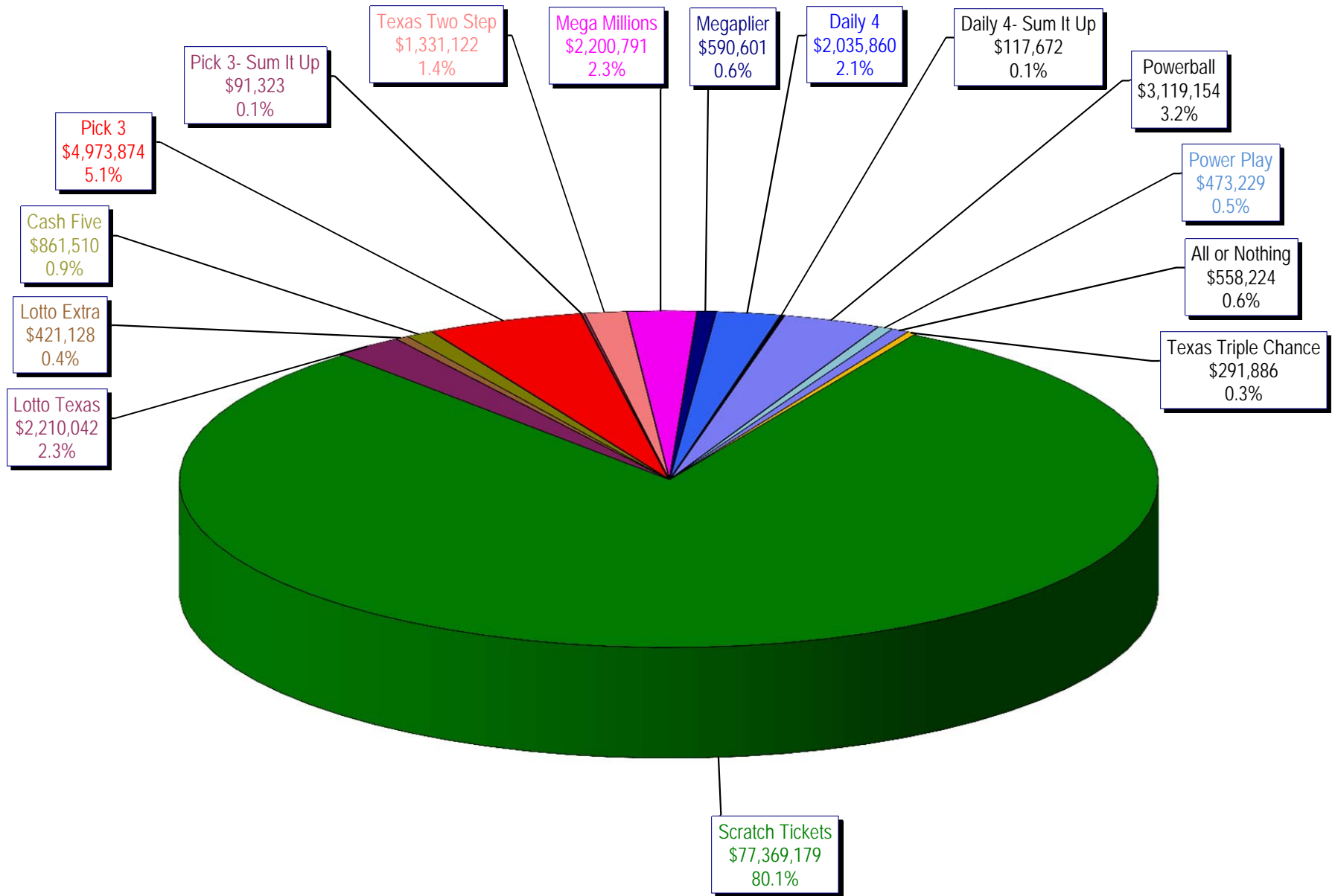
\* Before Unclaimed Prizes

\*\*Estimated; depends on # of guaranteed prizes won in Texas

Texas Lottery Commission  
Scratch Ticket Sales  
For the week ending 12/24/2016  
(Unaudited)



**Texas Lottery Commission**  
**All Game Sales**  
For the week ending 12/24/2016  
(Unaudited)



Texas Lottery Commission - Weekly Sales Summary for FY 2017 (Unaudited)

Week Ended	Scratch Tickets	New Games & Dates	Lotto Texas	Jackpot W S	Lotto Extra	Pick 3	Pick 3 Sum It Up	Cash Five	Texas Two Step	Jackpot M TH	Mega Millions	Jackpot T F	Megaplier	Daily 4	Daily 4 Sum It Up	Powerball	Jackpot W S	Power Play	All or Nothing	Texas Triple Chance	Total	Per Cap.
9/3/2016*	69,589,808	0	2,106,552	8.75 9.25	402,665	4,798,985	92,214	843,135	810,947	200 200	2,331,141	84 92	631,299	1,788,614	96,398	4,189,234	154 170	603,430	528,102	306,194	89,118,717	3.24
9/10/2016	65,952,418	1810 (\$1.N); 1809 (\$1.N); 1811 (\$5.N) - 9/06/16	2,095,828	9.75 10.25	399,944	4,590,651	86,697	818,614	862,148	225 275	2,490,552	101 111	655,066	1,647,119	87,455	4,473,836	186 205	628,810	506,718	291,940	85,587,795	3.12
9/17/2016	66,196,270	0	2,127,440	11 11.75	405,936	4,553,039	86,110	822,240	1,180,444	400 550	2,661,252	122 133	692,583	1,705,629	91,610	5,096,928	222 244	696,626	503,466	291,988	87,111,560	3.17
9/24/2016	64,383,005	1793 (\$2.N); 1782 (\$5.N); 1781 (\$10.N) - 9/19/16	2,141,721	12.25 13	404,127	4,551,066	83,958	811,604	1,465,789	700 900	1,733,288	15 20	489,347	1,680,793	90,386	2,790,676	40 50	429,512	503,041	275,858	81,834,170	2.98
10/1/2016	67,349,951	0	2,203,652	13.25 14	414,603	4,642,047	91,016	857,979	816,836	200 225	1,840,801	25 30	515,384	1,688,464	88,184	2,960,772	60 70	455,619	589,964	354,532	84,869,803	3.09
10/8/2016	71,598,690	1772 (\$1.N); 1770 (\$2.N); 1813 (\$5.N); 1779 (\$20.N) - 10/03/16	2,211,941	14.5 15.5	419,062	4,900,537	94,965	867,520	849,234	200 225	1,925,289	35 41	540,723	1,780,544	92,908	3,109,092	80 91	471,027	611,898	336,368	89,809,797	3.27
10/15/2016	69,444,762	0	2,207,002	16 16.75	416,802	4,549,017	89,171	836,548	1,024,493	300 425	1,780,458	49 15	496,567	1,679,519	87,007	3,499,528	107 122	510,617	577,343	321,190	87,520,023	3.19
10/22/2016	69,317,066	1814 (\$3.N); 1815 (\$5.N); 1832 (\$50.N) - 10/17/16	2,222,089	17 18	420,632	4,457,898	84,115	836,942	1,260,293	575 750	1,714,985	20 25	482,408	1,636,471	83,009	3,800,444	136 151	542,655	564,808	315,588	87,739,402	3.19
10/29/2016	69,729,599	0	2,269,908	18.5 19.25	430,487	4,511,234	86,114	833,125	779,029	200 200	1,781,093	30 35	500,203	1,711,520	88,083	4,097,116	164 180	575,614	565,102	306,622	88,264,847	3.21
11/5/2016	73,451,702	0	2,168,782	20 5	414,167	4,996,360	97,149	859,798	796,978	200 200	1,904,765	40 47	534,014	1,913,301	100,223	4,796,408	198 217	660,205	591,246	318,544	93,603,641	3.41
11/12/2016	70,998,320	1816 (\$2.N); 1808 (\$5.N); 1817 (\$5.N); 1818 (\$10.N) - 11/07/16	1,893,513	5.25 5.5	368,470	4,642,196	89,581	833,195	869,408	225 275	1,964,313	54 65	541,639	1,741,306	90,176	5,313,351	236 258	715,597	563,280	299,436	90,923,780	3.31
11/19/2016	75,265,196	1819 (\$1.N); 1820 (\$5.N); 1869 (\$10.N) - 11/16/16	1,924,291	5.75 6	376,977	4,595,331	87,939	830,211	1,078,765	400 550	2,072,033	73 82	567,597	1,715,227	91,335	6,391,094	293 320	836,372	557,058	300,408	96,689,833	3.52
11/26/2016	68,983,157	0	1,945,264	6.25 6.5	383,703	4,472,018	83,761	795,696	737,931	200 225	1,698,370	15 20	487,160	1,649,794	84,195	9,839,524	359 403	1,235,062	527,328	283,526	93,206,488	3.39
12/3/2016	72,688,514	0	1,989,472	6.75 7	386,573	4,901,443	91,365	857,900	1,002,319	275 375	1,761,923	25 30	499,193	1,823,528	94,278	2,932,322	40 54	444,551	569,036	299,426	90,341,842	3.29
12/10/2016	71,676,549	1807 (\$5.N); 1866 (\$10.N); 1822 (\$20.N) - 12/05/16	2,006,953	7.25 7.5	388,230	4,748,391	88,668	849,940	1,337,879	525 700	1,830,451	35 43	505,981	1,812,622	88,690	3,176,570	67 85	475,269	551,930	289,016	89,827,139	3.27
12/17/2016	73,909,726	0	2,048,592	7.75 8	398,632	4,778,144	88,676	854,061	1,906,792	900 1,125	1,966,377	51 59	539,946	1,844,818	94,354	3,892,738	100 119	561,900	551,086	288,218	93,724,059	3.41
12/24/2016	77,369,179	1823 (\$2.N); 1824 (\$5.N) - 12/19/16	2,210,042	8.25 8.75	421,128	4,973,874	91,323	861,510	1,331,122	1,375 200	2,200,791	67 76	590,601	2,035,860	117,672	3,119,154	40 50	473,229	558,224	291,886	96,645,594	3.52
weekly change	4.7%		7.9%		5.6%	4.1%	3.0%	0.9%	-30.2%		11.9%		9.4%	10.4%	24.7%	-19.9%		-15.8%	1.3%	1.3%	3.1%	
	<b>SALES</b>		<b>SALES</b>		<b>SALES</b>	<b>SALES</b>	<b>SALES</b>	<b>SALES</b>	<b>SALES</b>		<b>SALES</b>		<b>SALES</b>	<b>SALES</b>	<b>SALES</b>	<b>SALES</b>		<b>SALES</b>	<b>SALES</b>	<b>SALES</b>	<b>SALES</b>	<b>% of Sales</b>
Calendar Year to date	3,709,542,014		113,042,935		21,103,854	248,070,440	4,993,365	44,316,606	54,643,870		146,303,043		37,661,312	90,121,795	4,852,615	451,029,428		53,302,487	29,089,248	19,002,551	5,027,075,562	100.0%
Fiscal Year to date 2017	1,161,294,370		34,767,105		6,657,644	77,447,692	1,470,185	13,839,628	17,678,355		32,529,813		8,960,816	29,007,681	1,520,931	71,517,289		10,029,895	9,158,992	5,018,298	1,480,898,693	100.0%
*Full week includes 4 days from FY16																						