



WEEKLY SALES SUMMARY

Unaudited

[Week Ending: 12/26/2015](#)

Texas Lottery Commission
Fiscal Year to Date Sales Comparison
Unaudited

Through the Week Ending 12/26/2015 (17 Weeks)

Sales by Game	FY 2014 *	FY 2015 **	FY 2016	\$ Change		% Change	
				FY 2016 to FY 2014	FY 2016 to FY 2015	FY 2016 to FY 2014	FY 2016 to FY 2015
Scratch Tickets	\$ 1,032,548,848	\$ 1,075,234,265	\$ 1,113,012,293	\$ 80,463,445	\$ 37,778,028	7.8%	3.5%
Lotto Texas	43,637,203	39,252,998	40,536,473	-3,100,730	1,283,475	-7.1%	3.3%
Lotto Extra	5,600,981	5,924,368	6,859,308	1,258,327	934,940	22.5%	15.8%
Pick 3	81,978,928	80,979,126	81,065,757	-913,171	86,631	-1.1%	0.1%
Pick 3 Sum It Up	1,617,761	1,543,364	1,608,670	-9,091	65,306	-0.6%	4.2%
Cash Five	17,202,718	16,107,011	14,910,480	-2,292,238	-1,196,531	-13.3%	-7.4%
Texas Two Step	18,249,685	17,924,908	16,838,424	-1,411,261	-1,086,484	-7.7%	-6.1%
Mega Millions	87,022,471	51,804,944	40,588,311	-46,434,160	-11,216,633	-53.4%	-21.7%
Megaplier	17,570,125	11,761,950	10,144,778	-7,425,347	-1,617,172	-42.3%	-13.7%
Daily 4	26,994,202	27,329,521	27,978,199	983,997	648,678	3.6%	2.4%
Daily 4 Sum It Up	1,657,929	1,632,265	1,440,835	-217,095	-191,431	-13.1%	-11.7%
Powerball	72,659,361	54,587,131	67,207,895	-5,451,466	12,620,764	-7.5%	23.1%
Power Play	8,548,866	7,184,768	8,743,267	194,401	1,558,499	2.3%	21.7%
All or Nothing	15,157,192	12,658,176	10,042,132	-5,115,060	-2,616,044	-33.7%	-20.7%
Monopoly	- ¹	2,656,700	-	-	-2,656,700	-	-100.0%
Texas Triple Chance	-	-	8,812,869	8,812,869	8,812,869	-	-
Total	\$ 1,430,446,269	\$ 1,406,581,495	\$ 1,449,789,690	\$ 19,343,421	\$ 43,208,195	1.4%	3.1%

* 2 extra days

** 1 extra day

¹ Monopoly sales were suspended after draw on 12/12/14

Texas Lottery Commission
Fiscal Year to Date Cumulative Average Sales Comparison
Unaudited

Through the Week Ending 12/26/2015 (17 Weeks)

Sales by Game	FY 2014	FY 2015	FY 2016
Scratch Tickets	\$ 8,676,881	\$ 9,112,155	\$ 9,512,926
Lotto Texas	366,699	332,653	346,466
Lotto Extra	47,067	50,207	58,627
Pick 3	688,899	686,264	692,870
Pick 3 Sum It Up	13,595	13,079	13,749
Cash Five	144,561	136,500	127,440
Texas Two Step	153,359	151,906	143,918
Mega Millions	731,281	439,025	346,909
Megaplier	147,648	99,678	86,708
Daily 4	226,842	231,606	239,130
Daily 4 Sum It Up	13,932	13,833	12,315
Powerball	610,583	462,603	574,426
Power Play	71,839	60,888	74,729
All or Nothing	127,371	107,273	85,830
Monopoly	- **	48,304	-
Texas Triple Chance	- *	-	96,845
Total	\$ <u>12,020,557</u>	\$ <u>11,945,971</u>	\$ <u>12,412,886</u>

thru 12/28/2013
119 days

**

thru 12/27/2014
118 days
55 days

*

thru 12/26/2015
117 days
91 days

Texas Lottery Commission
Fiscal Year Over Year Change in Sales
Unaudited
FY 2016 Compared to FY 2015

			SCRATCH TICKETS				DRAW GAMES				TOTAL SALES			
FY 2016			FY 2016	FY 2015	Difference	% change - Cumulative Sales	FY 2016	FY 2015	Difference	% change - Cumulative Sales	FY 2016	FY 2015	Difference	% change - Cumulative Sales
Week	Week Ending													
1	9/5/2015 *		\$49,534,249	\$54,911,801	(\$5,377,552)	-9.8%	\$17,091,724	\$17,482,488	(\$390,765)	-2.2%	\$66,625,973	\$72,394,289	(\$5,768,317)	-8.0%
2	9/12/2015		\$61,566,291	\$61,436,533	\$129,758	0.2%	\$20,630,922	\$19,097,081	\$1,533,841	8.0%	\$82,197,213	\$80,533,614	\$1,663,599	2.1%
3	9/19/2015		\$63,530,657	\$60,959,234	\$2,571,423	4.2%	\$20,327,253	\$20,567,894	(\$240,641)	-1.2%	\$83,857,910	\$81,527,128	\$2,330,782	2.9%
4	9/26/2015		\$61,731,400	\$59,710,056	\$2,021,344	3.4%	\$22,252,290	\$19,920,828	\$2,331,462	11.7%	\$83,983,690	\$79,630,884	\$4,352,806	5.5%
5	10/3/2015		\$67,048,415	\$62,119,854	\$4,928,561	7.9%	\$25,436,791	\$18,531,421	\$6,905,370	37.3%	\$92,485,206	\$80,651,275	\$11,833,931	14.7%
6	10/10/2015		\$66,049,706	\$61,253,665	\$4,796,041	7.8%	\$18,138,977	\$18,985,332	(\$846,355)	-4.5%	\$84,188,683	\$80,238,997	\$3,949,687	4.9%
7	10/17/2015		\$65,073,593	\$60,230,048	\$4,843,545	8.0%	\$17,776,414	\$19,538,402	(\$1,761,988)	-9.0%	\$82,850,007	\$79,768,450	\$3,081,558	3.9%
8	10/24/2015		\$64,087,437	\$62,384,112	\$1,703,325	2.7%	\$18,450,464	\$21,475,643	(\$3,025,179)	-14.1%	\$82,537,901	\$83,859,755	(\$1,321,854)	-1.6%
9	10/31/2015		\$66,025,374	\$63,404,713	\$2,620,661	4.1%	\$19,568,150	\$23,568,817	(\$4,000,668)	-17.0%	\$85,593,524	\$86,973,530	(\$1,380,007)	-1.6%
10	11/7/2015		\$68,137,192	\$65,486,719	\$2,650,473	4.0%	\$20,398,351	\$23,749,032	(\$3,350,681)	-14.1%	\$88,535,543	\$89,235,751	(\$700,208)	-0.8%
11	11/14/2015		\$65,449,428	\$61,745,521	\$3,703,907	6.0%	\$20,169,382	\$17,449,604	\$2,719,779	15.6%	\$85,618,810	\$79,195,125	\$6,423,686	8.1%
12	11/21/2015		\$68,364,421	\$66,353,583	\$2,010,838	3.0%	\$17,174,606	\$17,108,084	\$66,522	0.4%	\$85,539,027	\$83,461,667	\$2,077,360	2.5%
13	11/28/2015		\$61,091,628	\$60,471,184	\$620,444	1.0%	\$17,168,993	\$17,303,129	(\$134,136)	-0.8%	\$78,260,621	\$77,774,313	\$486,309	0.6%
14	12/5/2015		\$67,830,827	\$66,648,696	\$1,182,131	1.8%	\$19,252,418	\$18,862,425	\$389,994	2.1%	\$87,083,245	\$85,511,121	\$1,572,125	1.8%
15	12/12/2015		\$68,324,452	\$65,708,630	\$2,615,822	4.0%	\$19,529,408	\$18,649,598	\$879,811	4.7%	\$87,853,860	\$84,358,228	\$3,495,633	4.1%
16	12/19/2015		\$71,041,258	\$68,551,298	\$2,489,960	3.6%	\$20,824,840	\$19,051,100	\$1,773,740	9.3%	\$91,866,098	\$87,602,398	\$4,263,700	4.9%
17	12/26/2015		\$78,125,965	\$73,858,618	\$4,267,347	5.8%	\$22,586,417	\$20,006,357	\$2,580,061	12.9%	\$100,712,382	\$93,864,975	\$6,847,408	7.3%
18	1/2/2016			\$67,733,268				\$21,355,167				\$89,088,435		
19	1/9/2016			\$64,745,641				\$22,265,347				\$87,010,988		
20	1/16/2016			\$64,015,166				\$23,694,617				\$87,709,783		
21	1/23/2016			\$62,569,156				\$19,765,442				\$82,334,598		
22	1/30/2016			\$68,001,588				\$22,877,000				\$90,878,588		
23	2/6/2016			\$75,677,650				\$31,662,209				\$107,339,859		
24	2/13/2016			\$75,368,712				\$46,091,747				\$121,460,459		
25	2/20/2016			\$74,833,076				\$19,865,172				\$94,698,248		
26	2/27/2016			\$69,918,013				\$19,735,352				\$89,653,365		
27	3/5/2016			\$74,848,961				\$19,946,068				\$94,795,029		
28	3/12/2016			\$70,079,409				\$20,044,562				\$90,123,971		
29	3/19/2016			\$70,368,686				\$18,480,795				\$88,849,481		
30	3/26/2016			\$70,280,600				\$17,595,205				\$87,875,805		
31	4/2/2016			\$74,369,952				\$18,378,917				\$92,748,869		
32	4/9/2016			\$67,416,817				\$18,594,844				\$86,011,661		
33	4/16/2016			\$68,393,316				\$18,104,632				\$86,497,948		
34	4/23/2016			\$70,078,182				\$17,957,150				\$88,035,332		
35	4/30/2016			\$71,744,718				\$18,961,113				\$90,705,831		
36	5/7/2016			\$73,415,978				\$20,210,341				\$93,626,319		
37	5/14/2016			\$72,152,109				\$20,362,774				\$92,514,883		
38	5/21/2016			\$70,399,950				\$21,246,276				\$91,646,226		
39	5/28/2016			\$68,547,554				\$22,227,946				\$90,775,500		
40	6/4/2016			\$71,254,006				\$20,739,703				\$91,993,709		
41	6/11/2016			\$65,878,375				\$17,216,403				\$83,094,778		
42	6/18/2016			\$66,658,742				\$17,340,531				\$83,999,273		

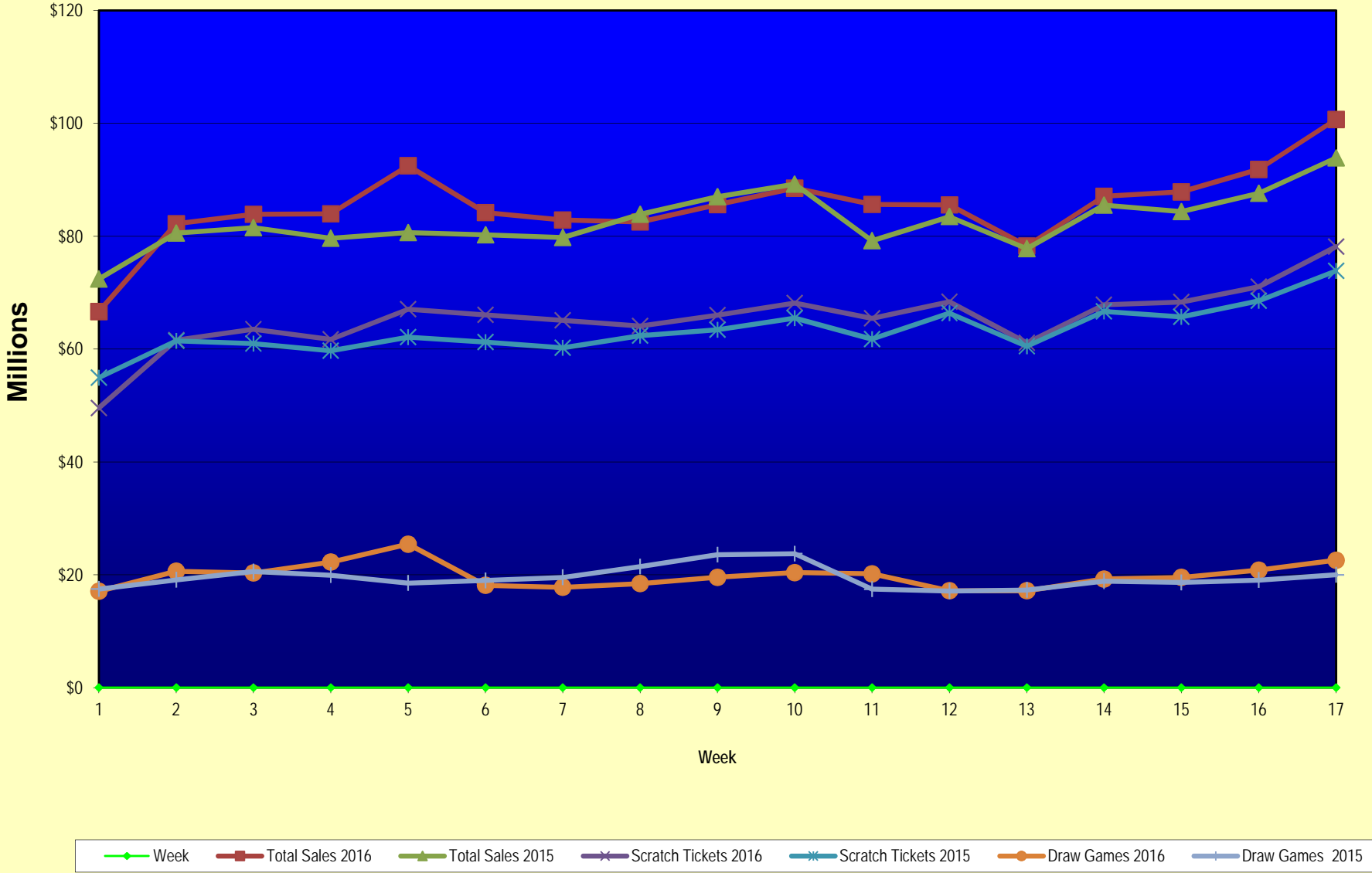
Texas Lottery Commission
Fiscal Year Over Year Change in Sales
Unaudited
FY 2016 Compared to FY 2015

			SCRATCH TICKETS				DRAW GAMES				TOTAL SALES			
FY 2016			FY 2016	FY 2015	Difference	% change - Cumulative Sales	FY 2016	FY 2015	Difference	% change - Cumulative Sales	FY 2016	FY 2015	Difference	% change - Cumulative Sales
Week	Week	Ending												
43	6/25/2016			\$65,282,276				\$16,873,368				\$82,155,644		
44	7/2/2016			\$67,757,752				\$18,007,540				\$85,765,292		
45	7/9/2016			\$64,718,254				\$18,203,985				\$82,922,239		
46	7/16/2016			\$64,957,977				\$18,792,785				\$83,750,762		
47	7/23/2016			\$62,541,241				\$18,229,965				\$80,771,206		
48	7/30/2016			\$66,468,460				\$17,742,489				\$84,210,949		
49	8/6/2016			\$62,412,598				\$17,331,374				\$79,743,972		
50	8/13/2016			\$62,089,389				\$17,501,599				\$79,590,988		
51	8/20/2016			\$62,437,148				\$17,779,458				\$80,216,606		
52	8/27/2016			\$61,403,206				\$18,529,560				\$79,932,766		
	8/31/2016 **			\$17,309,621				\$3,279,958				\$20,589,579		
Total thru Current Week			\$1,113,012,293	\$1,075,234,265	\$37,778,028	3.5%	\$336,777,397	\$331,347,230	\$5,430,167	1.6%	\$1,449,789,690	\$1,406,581,495	\$43,208,195	3.1%
Fiscal Year Total			\$1,113,012,293	\$3,481,361,812			\$336,777,397	\$1,048,338,613			\$1,449,789,690	\$4,529,700,425		

* FY 16 includes 5 days; FY 15 includes 6 days

** FY 16 includes 4 days; FY 15 includes 2 days

Texas Lottery Commission Fiscal Year Over Year Change in Sales



Note: Week 1 is not a full week of sales as this report is prepared on a Fiscal Year basis.

Texas Lottery Commission
Scratch Tickets by Price Point
Sales, Prize Expense, Sales Contribution and Payout Percentage With Year Over Year Changes
Unaudited

Fiscal Year	Price Point	# of Active Games	FY Sales	% of Scratch Ticket Sales	Year over Year Change in Sales	FY Prize Expense	Year over Year Change in Prize Expense	FY Sales Contribution	Year over Year Change in Contribution	Average Prize Payout %	Year over Year Change in Payout %
2015	\$1.00	17	54,080,508	5.0%		33,089,601		20,990,907		61.2%	2.1%
Through	\$2.00	27	112,394,932	10.5%		74,238,240		38,156,692		66.1%	1.9%
12/27/2014	\$3.00	12	105,304,620	9.8%		69,404,657		35,899,963		65.9%	0.4%
	\$5.00	38	343,405,445	31.9%		233,296,891		110,108,554		67.9%	0.0%
	\$10.00	14	212,662,120	19.8%		149,973,537		62,688,583		70.5%	0.3%
	\$20.00	8	198,332,440	18.4%		148,707,546		49,624,895		75.0%	0.1%
	\$50.00	3	49,054,200	4.6%		38,123,342		10,930,858		77.7%	0.1%
Total		119	\$1,075,234,265			\$746,833,815		\$328,400,450		69.5%	0.8%
2016	\$1.00	14	49,448,282	4.4%		29,893,491		19,554,791		60.5%	-0.1%
thru	\$2.00	26	112,844,818	10.1%		73,418,774		39,426,044		65.1%	-0.7%
12/26/2015	\$3.00	10	89,453,163	8.0%		58,868,926		30,584,237		65.8%	-0.2%
	\$5.00	42	361,769,270	32.5%		245,788,683		115,980,587		67.9%	0.0%
	\$10.00	14	219,546,310	19.7%		153,815,182		65,731,128		70.1%	-0.3%
	\$20.00	10	225,083,400	20.2%		168,684,392		56,399,008		74.9%	0.0%
	\$50.00	3	54,867,050	4.9%		42,672,395		12,194,655		77.8%	0.0%
Total		119	\$1,113,012,293			\$773,141,842		\$339,870,451		69.5%	0.0%
Variance	\$1.00	-3	-4,632,226		-8.6%	-3,196,111	-9.7%	-1,436,115	-6.8%	-0.73%	
2016 to	\$2.00	-1	449,886		0.4%	-819,466	-1.1%	1,269,352	3.3%	-0.99%	
2015	\$3.00	-2	-15,851,457		-15.1%	-10,535,730	-15.2%	-5,315,727	-14.8%	-0.10%	
	\$5.00	4	18,363,825		5.3%	12,491,792	5.4%	5,872,033	5.3%	0.00%	
	\$10.00	0	6,884,190		3.2%	3,841,644	2.6%	3,042,546	4.9%	-0.46%	
	\$20.00	2	26,750,960		13.5%	19,976,846	13.4%	6,774,114	13.7%	-0.04%	
	\$50.00	0	5,812,850		11.8%	4,549,053	11.9%	1,263,797	11.6%	0.06%	
Total		0	\$37,778,028		3.5%	\$26,308,027	3.5%	\$11,470,001	3.5%	0.01%	

Notes - Scratch Ticket Variances

Texas Lottery Commission
Scratch Tickets by Price Point
Sales, Prize Expense, Sales Contribution and Payout Percentage With Year Over Year Changes
Unaudited

			FY 2016		FY 2015	Difference
Sales	\$1 - \$5		\$613,515,533		\$615,185,505	-\$1,669,972
Prize Exp.	\$1 - \$5		\$407,969,874		\$410,029,390	-\$2,059,515
Sales Cont.	\$1 - \$5		\$205,545,659		\$205,156,115	\$389,543
Prize Exp. %	\$1 - \$5		66.5%		66.7%	-0.2%
			FY 2016		FY 2015	Difference
Sales	\$10 - \$50		\$499,496,760		\$460,048,760	\$39,448,000
Prize Exp.	\$10 - \$50		\$365,171,968		\$336,804,425	\$28,367,543
Sales Cont.	\$10 - \$50		\$134,324,792		\$123,244,335	\$11,080,457
Prize Exp. %	\$10 - \$50		73.1%		73.2%	-0.1%
			FY 2016		FY 2015	Difference
Sales	Scratch		\$1,113,012,293		\$1,075,234,265	\$37,778,028
Prize Exp.	Scratch		\$773,141,842		\$746,833,815	\$26,308,028
Sales Cont.	Scratch		\$339,870,451		\$328,400,450	\$11,470,001
Prize Exp. %	Scratch		69.5%		69.5%	0.0%

			FY 2016		FY 2015	Difference
Sales	\$1 - \$10		\$833,061,843		\$827,847,625	\$5,214,218
Prize Exp.	\$1 - \$10		\$561,785,056		\$560,002,927	\$1,782,129
Sales Cont.	\$1 - \$10		\$271,276,787		\$267,844,698	\$3,432,089
Prize Exp. %	\$1 - \$10		67.4%		67.6%	-0.2%
			FY 2016		FY 2015	Difference
Sales	\$20 - \$50		\$279,950,450		\$247,386,640	\$32,563,810
Prize Exp.	\$20 - \$50		\$211,356,787		\$186,830,888	\$24,525,899
Sales Cont.	\$20 - \$50		\$68,593,663		\$60,555,752	\$8,037,911
Prize Exp. %	\$20 - \$50		75.5%		75.5%	0.0%
			FY 2016		FY 2015	Difference
Sales	Scratch		\$1,113,012,293		\$1,075,234,265	\$37,778,028
Prize Exp.	Scratch		\$773,141,842		\$746,833,815	\$26,308,027
Sales Cont.	Scratch		\$339,870,451		\$328,400,450	\$11,470,001
Prize Exp. %	Scratch		69.5%		69.5%	0.0%

Texas Lottery Commission
Weekly Sales Summary
& Comparison to Previous Week
 Unaudited

	Week Ending 12/26/2015	% of Sales	Week Ending 12/19/2015	% of Sales	\$ change	% change
	<u>THIS WEEK</u>		<u>LAST WEEK</u>			
Total Sales	<u>\$100,712,382</u>		<u>\$91,866,098</u>		<u>\$8,846,285</u>	9.63%
Scratch Tickets	<u>\$78,125,965</u>	77.6%	<u>\$71,041,258</u>	77.3%	<u>\$7,084,707</u>	9.97%
Lotto	\$2,422,285	2.4%	\$2,326,771	2.5%	\$95,514	4.11%
Lotto Extra	\$417,003	0.4%	\$400,223	0.4%	\$16,780	4.19%
Pick 3	\$4,863,405	4.8%	\$4,980,685	5.4%	-\$117,280	-2.35%
Pick 3 Sum It Up	\$91,522	0.1%	\$95,154	0.1%	-\$3,632	-3.82%
Cash Five	\$860,361	0.9%	\$879,423	1.0%	-\$19,062	-2.17%
Texas Two Step	\$1,106,519	1.1%	\$888,674	1.0%	\$217,845	24.51%
Mega Millions	\$2,624,875	2.6%	\$2,322,855	2.5%	\$302,020	13.00%
Megaplier	\$637,157	0.6%	\$592,792	0.6%	\$44,365	7.48%
Daily 4	\$1,725,445	1.7%	\$1,796,682	2.0%	-\$71,237	-3.96%
Daily 4 Sum It Up	\$87,146	0.1%	\$92,401	0.1%	-\$5,256	-5.69%
Powerball	\$5,941,638	5.9%	\$4,707,013	5.1%	\$1,234,625	26.23%
Power Play	\$728,720	0.7%	\$600,420	0.7%	\$128,300	21.37%
All or Nothing	\$548,978	0.5%	\$573,754	0.6%	-\$24,776	-4.32%
Texas Triple Chance	\$531,364	0.5%	\$567,994	0.6%	-\$36,630	-6.45%
Total Draw Game Sales	<u>\$22,586,417</u>		<u>\$20,824,840</u>		<u>\$1,761,578</u>	8.46%

* Totals may not sum due to rounding.

Texas Lottery Commission
Weekly Sales Summary
Unaudited

SCRATCH TICKETS
TOP TEN SELLING GAMES

For the week ending: 12/26/2015

Rank	Price Point	Game	Sales (Millions)
1	\$ 20	HOLIDAY GAME BOOK	\$ 5.143
2	\$ 5	SUPER LOTERIA	\$ 4.872
3	\$ 20	HIT \$1,000,000	\$ 4.334
4	\$ 10	HAPPY HOLIDAYS	\$ 4.093
5	\$ 5	HIT \$200,000	\$ 2.935
6	\$ 50	DIAMOND DOLLARS	\$ 2.904
7	\$ 10	CASHWORD MULTIPLIER	\$ 2.864
8	\$ 20	\$1,000,000 INSTANT CASHOUT	\$ 2.813
9	\$ 5	HOLIDAY TREASURES	\$ 2.711
10	\$ 5	MERRY MONEY	\$ 2.623

Texas Lottery Commission
Prize Payout Tracking Report
Unaudited

Through the week ending: 12/26/2015

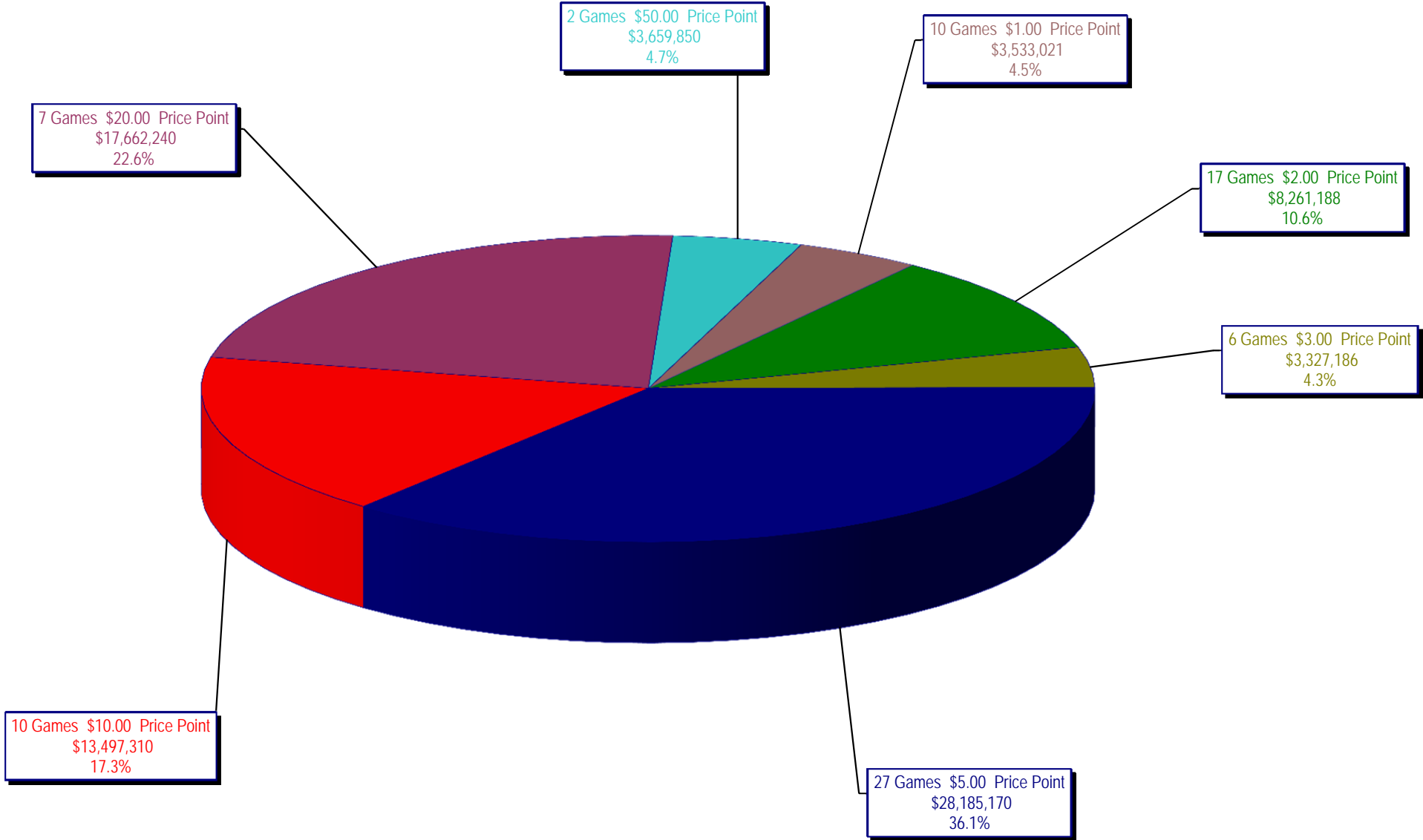
Draw Game Sales

		FY Sales Through Week Ending 12/26/2015		FY Prize Expense Through Week Ending 12/26/2015	Actual* Prize Payout	Base Payout (Prize Pool)
Lotto	\$	40,536,473	\$	26,216,012	64.67%	50.00%
Lotto Extra		6,859,308		3,519,338	51.31%	53.70%
Pick 3		81,065,757		39,946,190	49.28%	50.00%
Pick 3 Sum It Up		1,608,670		791,143	49.18%	50.00%
Cash Five		14,910,480		7,455,341	50.00%	50.00%
Texas Two Step		16,838,424		8,517,360	50.58%	50.00%
Mega Millions		40,588,311		20,831,114	51.32%	50.00%**
Megaplier		10,144,778		5,105,474	50.33%	N/A
Daily 4		27,978,199		14,118,100	50.46%	50.00%
Daily 4 Sum It Up		1,440,835		508,431	35.29%	50.00%
Powerball		67,207,895		33,800,338	50.29%	50.00%**
Power Play		8,743,267		4,396,896	50.29%	N/A
All or Nothing		10,042,132		5,176,730	51.55%	55.98%
Texas Triple Chance		8,812,869		5,406,898	61.35%	54.42%
Totals	\$	336,777,397	\$	175,789,365	52.20%	

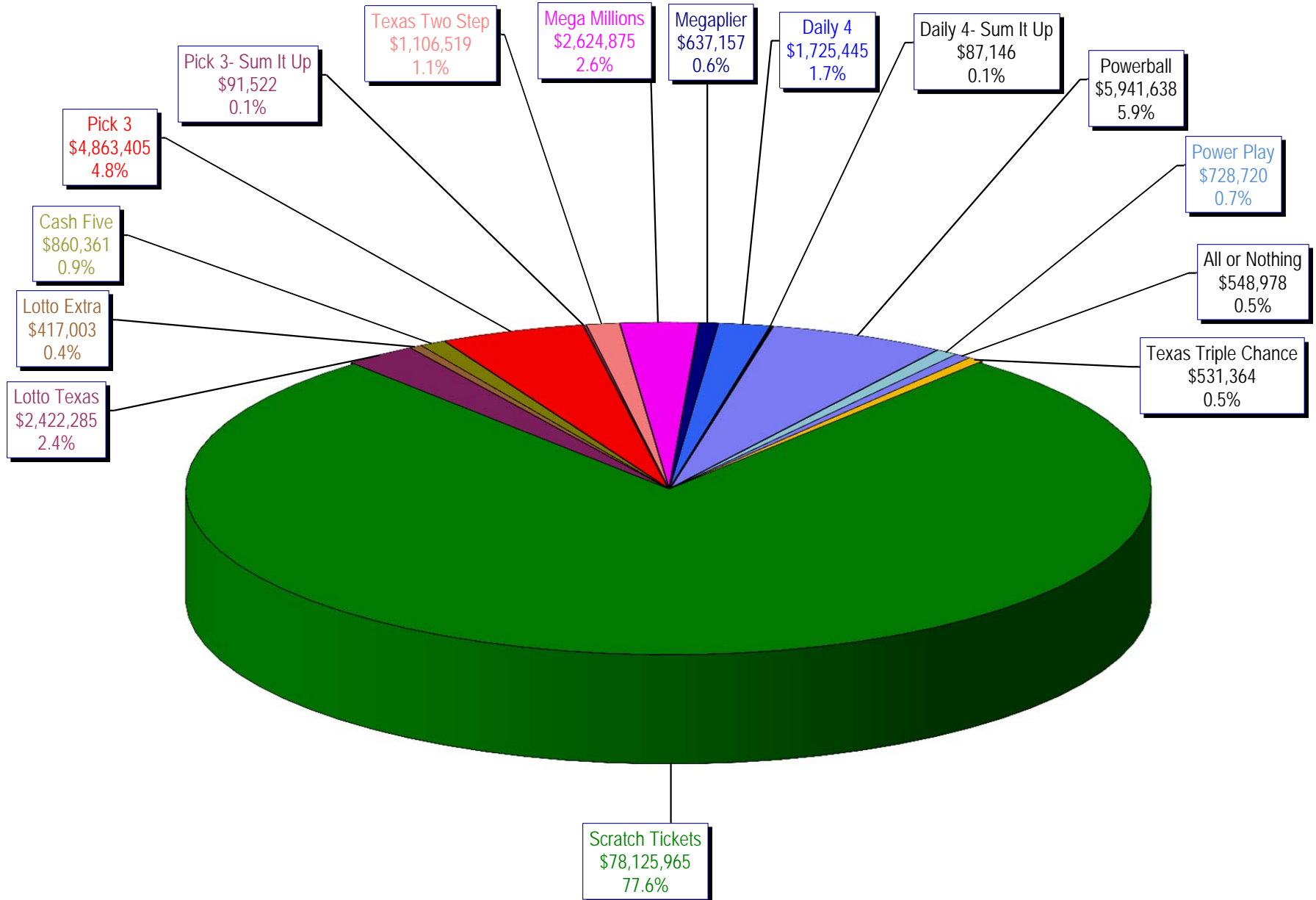
* Before Unclaimed Prizes

** Estimated; depends on # of guaranteed prizes won in Texas

Texas Lottery Commission
Scratch Ticket Sales
For the week ending 12/26/15
(Unaudited)



Texas Lottery Commission
All Game Sales
For the week ending 12/26/15
(Unaudited)



Texas Lottery Commission - Weekly Sales Summary for FY 2016 (Unaudited)

Week Ended	Scratch Tickets	New Games & Dates	Lotto Texas	Jackpot W	S	Lotto Extra	Pick 3	Pick 3 Sum It Up	Cash Five	Texas Two Step	Jackpot M	TH	Mega Millions	Jackpot T	F	Megaplier	Daily 4	Daily 4 Sum It Up	Powerball	Jackpot W	S	Power Play	All or Nothing	Monopoly	Jackpot F	Texas Triple Chance	Total	Per Cap.
9/5/2015*	66,843,870	0	2,788,509	25	26	466,121	5,249,348	117,979	956,126	1,253,100	425	575	2,366,640	74	85	608,901	1,725,027	93,067	3,586,482	120	133	484,769	675,614	0		87,215,551	3.24	
9/12/2015	61,566,291	1717 (\$1.N); 1718 (\$5.N); 1748 (\$10.N); 1696 (\$3.N) - 9/08/15	2,793,426	26.5	27.75	465,451	4,974,238	103,203	919,536	1,423,604	725	950	2,511,039	95	106	629,091	1,641,226	86,539	3,927,126	149	167	518,060	638,384	0		82,197,213	3.05	
9/19/2015	63,530,657	0	2,845,557	28.25	29.5	475,307	4,715,566	95,242	928,275	854,109	200	225	1,817,155	15	20	487,946	1,647,829	81,483	5,082,782	185	208	639,614	656,388	0		83,857,910	3.11	
9/26/2015	61,731,400	1720 (\$2.N); 1721 (\$5.N); 1715 (\$5.N) - 9/21/15	2,815,638	30	30.75	468,584	4,735,629	97,118	924,334	1,048,752	300	450	1,860,438	25	31	499,201	1,628,350	82,200	6,648,092	235	267	790,427	653,528	0		83,983,690	3.12	
10/3/2015	67,048,415	0	3,034,763	31.5	32.25	502,043	4,925,789	100,522	919,217	1,347,552	600	725	2,053,673	39	47	539,290	1,662,320	88,291	8,036,576	301	40	884,785	616,594	0	725,376	92,485,206	3.43	
10/10/2015	66,049,706	1722 (\$1.N); 1723 (\$5.N); 1711 (\$20.N) - 10/05/15	2,175,801	5	5.25	366,506	4,803,855	97,005	899,614	1,141,865	925	200	2,113,720	55	65	535,411	1,636,542	86,150	2,572,748	50	60	372,480	593,616	0		743,664	84,188,683	3.12
10/17/2015	65,073,593	0	2,133,286	5	5	358,076	4,629,752	92,453	876,040	824,622	200	225	2,286,703	75	84	568,477	1,576,323	79,576	2,638,956	70	80	377,157	580,870	0		754,124	82,850,007	3.07
10/24/2015	64,087,437	1724 (\$2.N); 1768 (\$5.N); 1726 (\$10.N) - 10/19/15	2,099,176	5.25	5.5	358,217	4,515,381	92,071	860,960	991,931	300	425	2,600,946	93	105	626,019	1,553,788	80,225	2,946,077	90	100	411,192	562,378	0		752,104	82,537,901	3.06
10/31/2015	66,025,374	0	2,165,101	5.75	6	368,559	4,653,961	91,360	873,751	944,275	550	200	2,945,749	117	129	695,705	1,621,009	85,560	3,327,954	110	127	455,266	573,258	0		766,642	85,593,524	3.18
11/7/2015	68,137,192	1727 (\$1.N); 1728 (\$2.N); 1729 (\$5.N) - 11/02/15	2,232,267	6.25	6.5	379,508	4,977,693	96,887	891,111	911,796	225	300	3,416,380	144	164	795,028	1,688,298	86,418	3,071,581	142	40	425,312	599,980	0		826,093	88,535,543	3.28
11/14/2015	65,449,428	0	2,185,621	6.75	7	373,102	4,726,211	93,030	870,215	1,087,101	425	575	4,139,462	180	200	938,757	1,614,727	82,536	2,437,413	50	60	357,760	574,596	0		688,852	85,618,810	3.18
11/21/2015	68,364,421	1730 (\$2.N); 1783 (\$2.N); 1731 (\$5.N) - 11/16/15 1778 (\$2.N) - 11/18/15	2,173,857	7.25	7.5	369,519	4,674,293	88,988	862,630	825,054	200	225	1,830,909	15	20	489,485	1,632,096	82,077	2,553,907	70	80	370,594	586,348	0		634,850	85,539,027	3.17
11/28/2015	61,091,628	0	2,113,171	7.75	8.25	364,947	4,523,108	87,438	825,047	904,825	300	400	1,785,419	25	31	478,828	1,591,416	82,363	2,886,666	90	100	406,251	546,614	0		572,902	78,260,621	2.90
12/5/2015	67,830,827	1733 (\$5.N) - 12/5/15	2,245,481	8.75	9.5	385,346	5,020,926	94,445	898,598	957,116	525	200	2,073,099	39	47	545,451	1,789,318	94,198	3,432,248	110	127	467,917	603,222	0		645,054	87,083,245	3.23
12/12/2015	68,324,452	1751 (\$1.N); 1780 (\$2.N); 1784 (\$5.N) - 12/07/15	2,281,004	10.25	10.75	391,281	4,980,397	94,549	877,611	815,777	225	200	2,160,601	57	66	555,974	1,746,314	86,684	3,835,044	145	164	508,111	592,212	0		603,850	87,853,860	3.26
12/19/2015	71,041,258	0	2,326,771	11.5	12.25	400,223	4,980,685	95,154	879,423	888,674	225	300	2,322,855	74	85	592,792	1,796,682	92,401	4,707,013	180	202	600,420	573,754	0		567,994	91,866,098	3.41
12/26/2015	78,125,965	1736 (\$5.N); 1740 (\$20.N) - 12/21/15 1789 (\$3.N) - 12/22/15	2,422,285	12.75	13.5	417,003	4,863,405	91,522	860,361	1,106,519	400	550	2,624,875	94	104	637,157	1,725,445	87,146	5,941,638	227	255	728,720	548,978	0		531,364	100,712,382	3.74
weekly change	10.0%		4.1%			4.2%	-2.4%	-3.8%	-2.2%	24.5%			13.0%			7.5%	-4.0%	-5.7%	26.2%			21.4%	-4.3%	0.0%		-6.4%	9.6%	
	SALES		SALES			SALES	SALES	SALES	SALES	SALES	SALES	SALES	SALES	SALES	SALES	SALES	SALES	SALES	SALES	SALES	SALES	SALES	SALES	SALES	SALES	SALES	SALES	% of Sales
Calendar Year to date	3,481,052,030		123,192,092			20,322,173	249,246,430	5,215,925	48,521,813	53,759,956			135,299,545			33,200,196	86,379,830	4,717,908	211,882,704			27,083,605	34,757,410		(390)	8,812,869	4,523,444,095	100.0%
Fiscal Year to date 2016	1,113,012,293		40,536,473			6,859,308	81,065,757	1,608,670	14,910,480	16,838,424			40,588,311			10,144,778	27,978,199	1,440,835	67,207,895			8,743,267	10,042,132		0	8,812,869	1,449,789,690	100.0%
*Full week includes 2 days from FY15																												