



WEEKLY SALES SUMMARY

Unaudited

Week Ending: 12/27/08

Texas Lottery Commission
Fiscal Year to Date Sales Comparison
Unaudited

Through the week ending 12/27/2008 (17 weeks)

Sales by Game	FY 2007 *	FY 2008 **	FY 2009	\$ Change		% Change	
				FY 2009 to FY 2007	FY 2009 to FY 2008	FY 2009 to FY 2007	FY 2009 to FY 2008
Instants	\$ 922,590,690	\$ 908,361,931	\$ 868,867,586	\$ -53,723,104	\$ -39,494,345	-5.8%	-4.3%
Lotto Texas	67,031,004	70,009,906	58,286,009	-8,744,995	-11,723,897	-13.0%	-16.7%
Pick 3	102,232,550	92,076,221	89,559,507	-12,673,043	-2,516,714	-12.4%	-2.7%
Pick 3 Sum It Up	-	1,378,490	1,895,332	1,895,332	516,842	-	-
Cash 5	28,862,907	25,381,767	22,817,940	-6,044,967	-2,563,827	-20.9%	-10.1%
Texas Two Step	18,937,174	13,665,618	14,375,419	-4,561,755	709,801	-24.1%	5.2%
Mega Millions	46,123,032	48,364,133	56,162,883	10,039,851	7,798,750	21.8%	16.1%
Megaplier	11,401,786	11,996,198	13,249,899	1,848,113	1,253,701	16.2%	10.5%
Daily 4	-	13,204,500	13,533,080	13,533,080	328,580	-	2.5%
Daily 4 Sum It Up	-	3,547,916	1,746,517	1,746,517	-1,801,399	-	-50.8%
Total	\$ 1,197,179,143	\$ 1,187,986,679	\$ 1,140,494,171	\$ -56,684,972	\$ -47,492,508	-4.7%	-4.0%

* 3 extra days in 2007 ** 2 extra days in 2008

Texas Lottery Commission
Fiscal Year Over Year Change in Sales
Unaudited
FY 2009 Compared to FY 2008

Week	FY 2009 Week Ending	INSTANT TICKETS				ON-LINE GAMES				TOTAL SALES			
		FY 2009	FY 2008	Difference	% change - Cumulative Sales	FY 2009	FY 2008	Difference	% change - Cumulative Sales	FY 2009	FY 2008	Difference	% change - Cumulative Sales
1	9/6/2008**	\$44,890,104	\$62,376,229	(\$17,486,125)	-28.0%	\$14,722,011	\$19,372,224	(\$4,650,213)	-24.0%	\$59,612,115	\$81,748,453	(\$22,136,338)	-27.1%
2	9/13/2008	\$46,309,551	\$52,458,866	(\$6,149,315)	-20.6%	\$13,704,860	\$16,926,163	(\$3,221,303)	-21.7%	\$60,014,411	\$69,385,029	(\$9,370,618)	-20.8%
3	9/20/2008	\$42,923,171	\$49,998,934	(\$7,075,763)	-18.6%	\$12,291,263	\$15,792,283	(\$3,501,020)	-21.8%	\$55,214,434	\$65,791,217	(\$10,576,783)	-19.4%
4	9/27/2008	\$47,042,801	\$49,894,175	(\$2,851,374)	-15.6%	\$14,222,339	\$14,800,514	(\$578,175)	-17.9%	\$61,265,140	\$64,694,689	(\$3,429,549)	-16.2%
5	10/4/2008	\$50,747,162	\$53,486,863	(\$2,739,701)	-13.5%	\$15,784,472	\$16,618,430	(\$833,958)	-15.3%	\$66,531,634	\$70,105,293	(\$3,573,659)	-14.0%
6	10/11/2008	\$49,763,789	\$50,918,020	(\$1,154,231)	-11.7%	\$15,622,498	\$15,601,410	\$21,088	-12.9%	\$65,386,287	\$66,519,430	(\$1,133,143)	-12.0%
7	10/18/2008	\$49,299,053	\$50,532,253	(\$1,233,200)	-10.5%	\$15,167,940	\$15,682,666	(\$514,726)	-11.6%	\$64,466,993	\$66,214,919	(\$1,747,926)	-10.7%
8	10/25/2008	\$49,977,581	\$50,347,450	(\$369,869)	-9.3%	\$14,525,843	\$15,586,516	(\$1,060,673)	-11.0%	\$64,503,424	\$65,933,966	(\$1,430,542)	-9.7%
9	11/1/2008	\$50,346,542	\$53,953,733	(\$3,607,191)	-9.0%	\$14,838,845	\$16,775,983	(\$1,937,139)	-11.1%	\$65,185,387	\$70,729,716	(\$5,544,330)	-9.5%
10	11/8/2008	\$54,860,087	\$53,635,090	\$1,224,997	-7.9%	\$16,057,069	\$15,912,791	\$144,278	-9.9%	\$70,917,156	\$69,547,881	\$1,369,275	-8.3%
11	11/15/2008	\$53,484,812	\$51,254,401	\$2,230,411	-6.8%	\$15,829,819	\$15,797,076	\$32,744	-9.0%	\$69,314,631	\$67,051,477	\$2,263,155	-7.3%
12	11/22/2008	\$52,806,511	\$50,897,817	\$1,908,694	-5.9%	\$16,460,748	\$15,801,720	\$659,028	-7.9%	\$69,267,259	\$66,699,537	\$2,567,722	-6.4%
13	11/29/2008	\$52,199,741	\$53,913,115	(\$1,713,374)	-5.7%	\$17,397,576	\$17,055,505	\$342,072	-7.1%	\$69,597,317	\$70,968,620	(\$1,371,303)	-6.0%
14	12/6/2008	\$56,731,851	\$55,702,697	\$1,029,154	-5.1%	\$20,363,789	\$17,900,717	\$2,463,073	-5.5%	\$77,095,640	\$73,603,414	\$3,492,227	-5.2%
15	12/13/2008	\$54,109,617	\$53,703,516	\$406,101	-4.7%	\$22,952,228	\$17,820,841	\$5,131,387	-3.0%	\$77,061,845	\$71,524,357	\$5,537,488	-4.3%
16	12/20/2008	\$55,777,328	\$57,592,769	(\$1,815,441)	-4.6%	\$15,833,517	\$17,436,233	(\$1,602,716)	-3.4%	\$71,610,845	\$75,029,002	(\$3,418,157)	-4.3%
17	12/27/2008	\$57,597,885	\$57,696,003	(\$98,118)	-4.3%	\$15,851,771	\$14,743,680	\$1,108,091	-2.9%	\$73,449,656	\$72,439,683	\$1,009,973	-4.0%
18	1/3/2009		\$57,935,952				\$15,704,450				\$73,640,402		
19	1/10/2009		\$55,360,542				\$15,691,540				\$71,052,082		
20	1/17/2009		\$54,920,166				\$16,259,669				\$71,179,835		
21	1/24/2009		\$54,439,890				\$16,691,724				\$71,131,614		
22	1/31/2009		\$57,464,382				\$17,968,227				\$75,432,609		
23	2/7/2009		\$60,715,019				\$20,097,338				\$80,812,357		
24	2/14/2009		\$57,093,143				\$22,179,908				\$79,273,051		
25	2/21/2009		\$57,627,047				\$27,230,539				\$84,857,586		
26	2/28/2009		\$55,591,667				\$17,016,118				\$72,607,785		
27	3/7/2009		\$56,837,481				\$16,690,193				\$73,527,674		
28	3/14/2009		\$54,587,112				\$16,448,165				\$71,035,277		
29	3/21/2009		\$53,098,937				\$16,639,184				\$69,738,121		
30	3/28/2009		\$53,933,689				\$17,698,625				\$71,632,314		
31	4/4/2009		\$57,598,982				\$17,665,411				\$75,264,393		
32	4/11/2009		\$53,954,185				\$15,860,784				\$69,814,969		
33	4/18/2009		\$53,946,736				\$16,452,676				\$70,399,412		
34	4/25/2009		\$51,533,006				\$16,873,949				\$68,406,955		
35	5/2/2009		\$53,250,568				\$18,202,103				\$71,452,671		
36	5/9/2009		\$54,060,849				\$18,422,562				\$72,483,411		
37	5/16/2009		\$54,010,641				\$20,728,360				\$74,739,001		
38	5/23/2009		\$50,377,032				\$15,461,384				\$65,838,416		
39	5/30/2009		\$49,545,080				\$15,175,370				\$64,720,450		
40	6/6/2009		\$53,702,986				\$15,982,166				\$69,685,152		

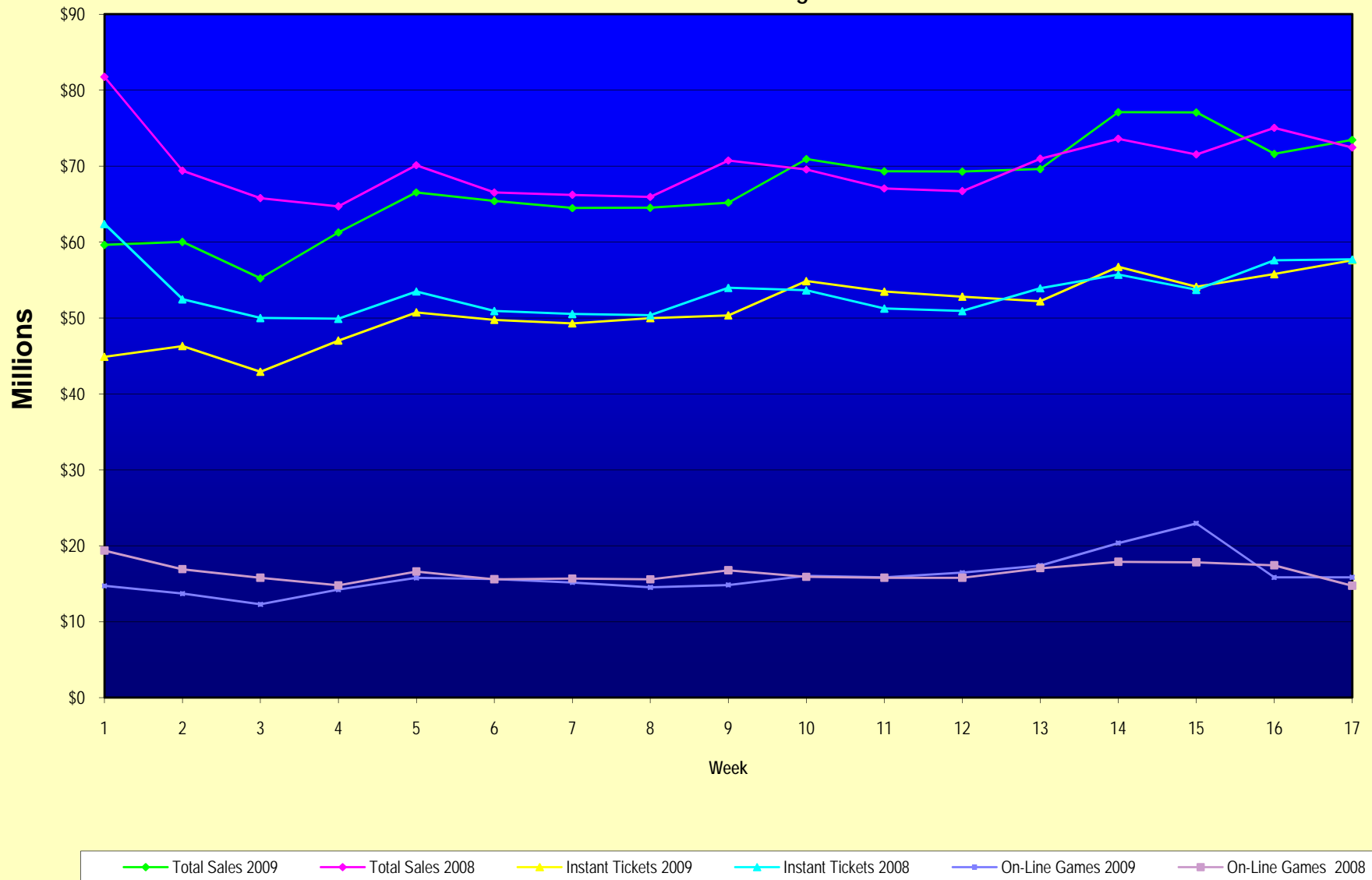
Note: Week 1 is not a full week of sales as this report is prepared on a Fiscal Year basis.

Texas Lottery Commission
Fiscal Year Over Year Change in Sales
Unaudited
FY 2009 Compared to FY 2008

Week	FY 2009 Week Ending	INSTANT TICKETS				ON-LINE GAMES				TOTAL SALES			
		FY 2009	FY 2008	Difference	% change - Cumulative Sales	FY 2009	FY 2008	Difference	% change - Cumulative Sales	FY 2009	FY 2008	Difference	% change - Cumulative Sales
41	6/13/2009		\$51,171,483				\$16,589,087				\$67,760,570		
42	6/20/2009		\$50,650,362				\$15,728,484				\$66,378,846		
43	6/27/2009		\$49,258,266				\$15,250,905				\$64,509,171		
44	7/4/2009		\$53,393,355				\$16,270,619				\$69,663,974		
45	7/11/2009		\$53,127,756				\$16,914,922				\$70,042,678		
46	7/18/2009		\$51,593,146				\$17,752,738				\$69,345,884		
47	7/25/2009		\$49,902,181				\$16,706,145				\$66,608,326		
48	8/1/2009		\$49,605,420				\$16,254,383				\$65,859,803		
49	8/8/2009		\$50,961,907				\$16,770,496				\$67,732,403		
50	8/15/2009		\$49,452,511				\$16,749,487				\$66,201,998		
51	8/22/2009		\$49,249,518				\$17,286,302				\$66,535,820		
52	8/29/2009		\$49,468,928				\$18,109,997				\$67,578,925		
53	9/5/2009		\$6,054,239				\$493,109				\$6,547,348		
Total thru Current Week		\$868,867,586	\$908,361,931	(\$39,494,345)	-4.3%	\$271,626,585	\$279,624,748	(\$7,998,163)	-2.9%	\$1,140,494,171	\$1,187,986,679	(\$47,492,508)	-4.0%
Fiscal Year Total		\$868,867,586	\$2,783,836,095			\$271,626,585	\$887,641,858			\$1,140,494,171	\$3,671,477,953		

** FY 2009 includes 6 days; FY 2008 includes 8 days
FY 2009 average daily sales are \$9,242,258. Two days at average daily sales are \$18,484,516.

Texas Lottery Commission Fiscal Year Over Year Change in Sales



Note: Week 1 is not a full week of sales as this report is prepared on a Fiscal Year basis.

Texas Lottery Commission
Instant Tickets by Price Point
Sales, Prize Expense, Sales Contribution and Payout Percentage With Year Over Year Changes
Unaudited

Fiscal Year	Price Point	# of Active Games	FY Sales	% of Instant Ticket Sales	Year over Year Change in Sales	FY Prize Expense	Year over Year Change in Prize Expense	FY Sales Contribution	Year over Year Change in Contribution	Average Prize Payout %	Year over Year Change in Payout %
2008	\$1.00	38	78,329,760	8.6%		47,066,106		31,263,654		60.1%	
thru	\$2.00	41	151,656,388	16.7%		98,595,712		53,060,676		65.0%	
12/29/2007	\$3.00	12	70,508,496	7.8%		46,448,197		24,060,299		65.9%	
	\$5.00	35	243,008,575	26.8%		164,805,757		78,202,818		67.8%	
	\$7.00	10	64,722,476	7.1%		44,006,860		20,715,616		68.0%	
	\$10.00	16	140,326,096	15.4%		98,236,856		42,089,240		70.0%	
	\$20.00	6	56,957,180	6.3%		40,953,272		16,003,908		71.9%	
	\$25.00	2	35,963,900	4.0%		26,110,254		9,853,646		72.6%	
	\$30.00	2	10,441,710	1.1%		7,549,219		2,892,491		72.3%	
	\$50.00	2	56,447,350	6.2%		40,720,052		15,727,298		72.1%	
Total		164	\$908,361,931			\$614,492,285		\$293,869,646		67.6%	
2009	\$1.00	34	74,318,592	8.6%		44,750,807		29,567,785		60.2%	0.1%
thru	\$2.00	29	147,948,432	17.0%		95,936,652		52,011,780		64.8%	-0.2%
12/20/2008	\$3.00	13	95,018,022	10.9%		62,467,796		32,550,226		65.7%	-0.1%
	\$5.00	32	265,446,179	30.6%		180,538,802		84,907,377		68.0%	0.2%
	\$7.00	6	37,796,801	4.4%		25,708,346		12,088,455		68.0%	0.0%
	\$10.00	14	118,451,210	13.6%		82,902,018		35,549,192		70.0%	0.0%
	\$20.00	7	83,403,280	9.6%		59,861,116		23,542,164		71.8%	-0.1%
	\$25.00	1	2,377,050	0.3%		1,728,939		648,111		72.7%	0.1%
	\$30.00	3	7,826,370	0.9%		5,671,598		2,154,772		72.5%	0.2%
	\$50.00	3	36,281,650	4.2%		26,232,149		10,049,501		72.3%	0.2%
Total		142	\$868,867,586			\$585,798,223		\$283,069,363		67.4%	-0.2%
Variance	\$1.00	-4	-4,011,168		-5.1%	-2,315,299	-4.9%	-1,695,869	-5.4%	0.13%	
2009 to	\$2.00	-12	-3,707,956		-2.4%	-2,659,059	-2.7%	-1,048,897	-2.0%	-0.17%	
2008	\$3.00	1	24,509,526		34.8%	16,019,599	34.5%	8,489,927	35.3%	-0.13%	
	\$5.00	-3	22,437,604		9.2%	15,733,045	9.5%	6,704,559	8.6%	0.19%	
	\$7.00	-4	-26,925,675		-41.6%	-18,298,515	-41.6%	-8,627,160	-41.6%	0.02%	
	\$10.00	-2	-21,874,886		-15.6%	-15,334,839	-15.6%	-6,540,047	-15.5%	-0.02%	
	\$20.00	1	26,446,100		46.4%	18,907,843	46.2%	7,538,257	47.1%	-0.13%	
	\$25.00	-1	-33,586,850		-93.4%	-24,381,314	-93.4%	-9,205,536	-93.4%	0.13%	
	\$30.00	1	-2,615,340		-25.0%	-1,877,621	-24.9%	-737,719	-25.5%	0.17%	
	\$50.00	1	-20,165,700		-35.7%	-14,487,903	-35.6%	-5,677,797	-36.1%	0.16%	
Total		-22	-\$39,494,345		-4.3%	-\$28,694,062	-4.7%	-\$10,800,283	-3.7%	-0.23%	

Texas Lottery Commission
Instant Tickets by Price Point
Sales, Prize Expense, Sales Contribution and Payout Percentage With Year Over Year Changes
Unaudited

Notes - Instant Ticket Variances

		FY 2009		FY 2008		Difference
Sales	\$1 - \$7	\$620,528,026		\$608,225,695		\$12,302,331
Prize Exp.	\$1 - \$7	\$409,402,404		\$400,922,632		\$8,479,772
Sales Cont.	\$1 - \$7	\$211,125,622		\$207,303,063		\$3,822,559
Prize Exp. %	\$1 - \$7	66.0%		65.9%		0.1%
		FY 2009		FY 2008		Difference
Sales	\$10 - \$50	\$248,339,560		\$300,136,236		-\$51,796,676
Prize Exp.	\$10 - \$50	\$176,395,819		\$213,569,653		-\$37,173,834
Sales Cont.	\$10 - \$50	\$71,943,741		\$86,566,583		-\$14,622,842
Prize Exp. %	\$10 - \$50	71.0%		71.2%		-0.1%
		FY 2009		FY 2008		Difference
Sales	Instant	\$868,867,586		\$908,361,931		-\$39,494,345
Prize Exp.	Instant	\$585,798,223		\$614,492,285		-\$28,694,062
Sales Cont.	Instant	\$283,069,363		\$293,869,646		-\$10,800,283
Prize Exp. %	Instant	67.4%		67.6%		-0.2%

		FY 2009		FY 2008		Difference
Sales	\$1 - \$10	\$738,979,236		\$748,551,791		-\$9,572,555
Prize Exp.	\$1 - \$10	\$492,304,421		\$499,159,488		-\$6,855,067
Sales Cont.	\$1 - \$10	\$246,674,815		\$249,392,303		-\$2,717,488
Prize Exp. %	\$1 - \$10	66.6%		66.7%		-0.1%
		FY 2009		FY 2008		Difference
Sales	\$20 - \$50	\$129,888,350		\$159,810,140		-\$29,921,790
Prize Exp.	\$20 - \$50	\$93,493,802		\$115,332,797		-\$21,838,995
Sales Cont.	\$20 - \$50	\$36,394,548		\$44,477,343		-\$8,082,795
Prize Exp. %	\$20 - \$50	72.0%		72.2%		-0.2%
		FY 2009		FY 2008		Difference
Sales	Instant	\$868,867,586		\$908,361,931		-\$39,494,345
Prize Exp.	Instant	\$585,798,223		\$614,492,285		-\$28,694,062
Sales Cont.	Instant	\$283,069,363		\$293,869,646		-\$10,800,283
Prize Exp. %	Instant	67.4%		67.6%		-0.2%

Texas Lottery Commission
Weekly Sales Summary
& Comparison to Previous Week
 Unaudited

	Week Ending 12/27/08		Week Ending 12/20/08			
	<u>THIS WEEK</u>	% of Sales	<u>LAST WEEK</u>	% of Sales	<u>\$ change</u>	<u>% change</u>
Total Sales	<u>\$73,449,656</u>		<u>\$71,610,845</u>		<u>\$1,838,811</u>	2.57%
Instant Tickets	<u>\$57,597,885</u>	78.4%	<u>\$55,777,328</u>	77.9%	<u>\$1,820,557</u>	3.26%
Lotto Texas	\$3,582,169	4.9%	\$3,432,340	4.8%	\$149,829	4.37%
Pick 3	\$5,628,082	7.7%	\$5,741,120	8.0%	-\$113,039	-1.97%
Pick 3 Sum It Up	\$115,323	0.2%	\$116,076	0.2%	-\$753	-0.65%
Cash 5	\$1,340,590	1.8%	\$1,401,805	2.0%	-\$61,215	-4.37%
Texas Two Step	\$708,906	1.0%	\$741,945	1.0%	-\$33,039	-4.45%
Mega Millions	\$2,842,167	3.9%	\$2,736,234	3.8%	\$105,933	3.87%
Megaplier	\$706,042	1.0%	\$687,875	1.0%	\$18,167	2.64%
Daily 4	\$828,346	1.1%	\$871,580	1.2%	-\$43,234	-4.96%
Daily 4 Sum It Up	<u>\$100,146</u>	0.1%	<u>\$104,543</u>	0.1%	<u>-\$4,397</u>	<u>-4.21%</u>
Total Online Sales	<u>\$15,851,771</u>		<u>\$15,833,517</u>		<u>\$18,254</u>	0.12%

* Totals may not sum due to rounding.

Texas Lottery Commission
Weekly Sales Summary
Unaudited

INSTANT TICKETS
TOP TEN SELLING GAMES

For the Week Ending : 12/27/08

Rank	Price Point	Game	Sales (Millions)
1	\$ 5	HOLIDAY TREASURES	\$ 3.265
2	\$ 5	GIANT JUMBO BUCKS II	\$ 3.070
3	\$ 10	JINGLE JUMBO BUCKS	\$ 2.985
4	\$ 5	MERRY MONEY	\$ 2.769
5	\$ 10	MEGA JUMBO BUCKS II	\$ 2.689
6	\$ 20	TEXAS \$50 MILLION CLUB	\$ 2.650
7	\$ 5	FANTASTIC 5'S	\$ 2.195
8	\$ 7	SIZZLIN' RED 7'S	\$ 2.097
9	\$ 3	BONUS CASHWORD	\$ 2.037
10	\$ 10	SET FOR LIFE	\$ 1.844

Texas Lottery Commission
Prize Payout Tracking Report
Unaudited

Through Week Ending 12/27/08

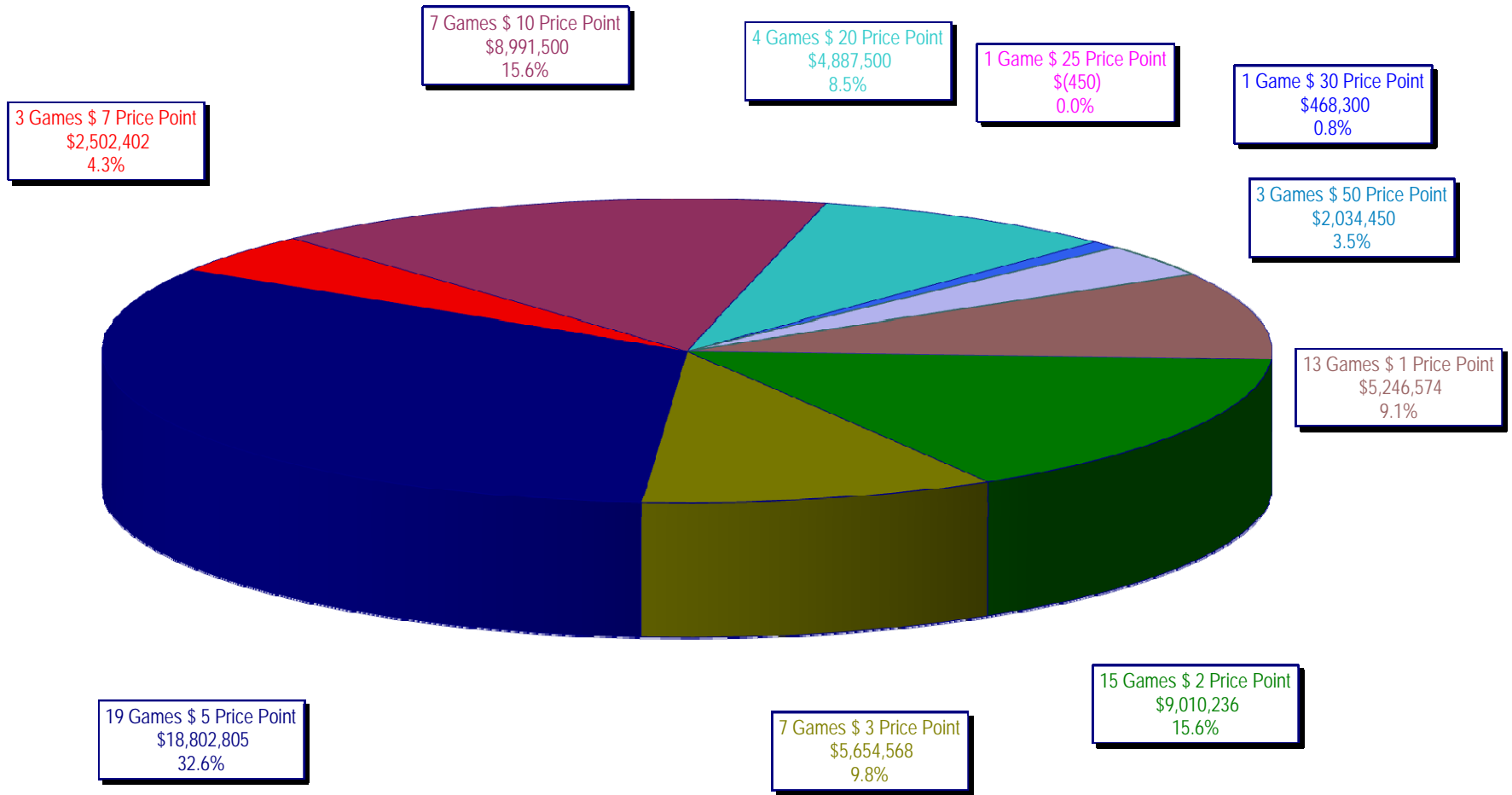
On-Line Sales

		FY Sales Through Week Ending 12/27/2008		FY Prize Expense Through Week Ending 12/27/2008	Actual* Prize Payout	Base Payout (Prize Pool)
Lotto	\$	58,286,009	\$	29,239,241	50.17%	50.00%
Pick 3		89,559,507		43,563,460	48.64%	50.00%
Pick 3 Sum It Up		1,895,332		866,241	45.70%	50.00%
Cash 5		22,817,940		11,507,655	50.43%	50.00%
Texas Two-Step		14,375,419		7,715,943	53.67%	50.00%
Mega Millions		56,162,883		26,921,151	47.93%	50.00%**
Megaplier		13,249,899		5,050,482	38.12%	N/A
Daily 4		13,533,080		5,890,425	43.53%	50.00%
Daily 4-Sum It Up		1,746,517		659,142	37.74%	50.00%
Totals	\$	271,626,585	\$	131,413,739	48.38%	

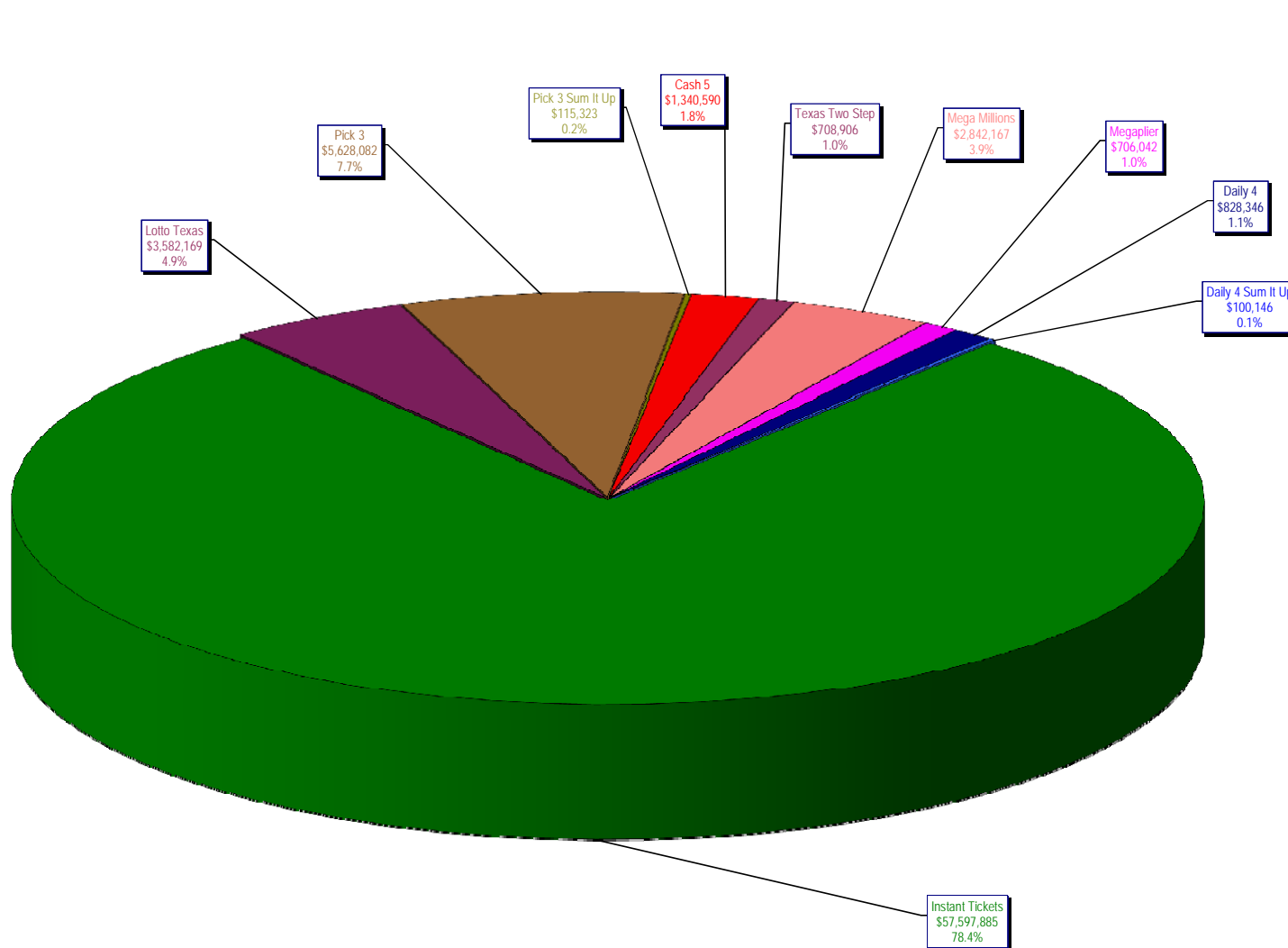
* Before Unclaimed Prizes

** Estimated; depends on # of guaranteed prizes won in Texas

Texas Lottery Commission
Instant Ticket Sales
For the Week Ending 12/27/2008
(Unaudited)



Texas Lottery Commission
All Game Sales
For the Week Ending 12/27/2008
(Unaudited)



* Totals may not sum due to rounding.

Texas Lottery Commission - Weekly Sales Summary for FY 2008 (Unaudited)

Week Ended	Instant Games	New Games & Dates	Lotto Texas	Jackpot W S	Pick 3	Pick 3 Sum It Up	Cash 5	Texas Two Step	Jackpot M/T	TH/F	Mega Millions	Jackpot T F	Megaplier	Daily 4	Daily 4 Sum It Up	Total	Per Cap.	
9/6/2008	50,944,343.00	1108 (\$2,N), 1088 (\$3, N) - 9/01/08	3,378,718.00	5 6	5,436,414.00	122,123.00	1,396,622.00	890,346.00	350	450	2,445,490.00	12 16	649,090.00	786,482.50	109,834.00	66,159,462.50	2.77	
9/13/2008	46,309,551.00	1109 (\$1,N), 1098 (\$5, N) - 9/08/08	3,020,089.00	7 8	4,705,585.50	105,899.00	1,279,412.00	856,199.00	600	200	2,327,214.00	24 12	617,672.00	696,633.00	96,156.50	60,014,411.00	2.51	
9/20/2008	42,923,171.00	0	3,054,093.00	9 10	4,121,734.50	90,718.00	1,155,350.00	637,792.00	225	250	1,978,127.00	15 12	540,225.00	627,210.00	86,013.50	55,214,434.00	2.31	
9/27/2008	47,042,801.00	1111 (\$2,N), 1099 (\$5, N) - 9/22/08	3,427,671.00	11 12	4,821,563.00	103,189.50	1,288,062.00	834,307.00	275	425	2,322,862.00	16 24	617,085.00	709,741.50	97,858.00	61,265,140.00	2.56	
10/4/2008	50,747,162.00	1113 (\$1,N) 9/29/08	3,675,683.00	13 14	5,305,711.00	116,332.50	1,369,040.00	1,074,874.00	525	650	2,671,927.00	32 42	693,845.00	770,782.50	106,277.00	66,531,634.00	2.78	
10/11/2008	49,763,789.00	0	3,732,365.00	15 16	5,287,094.00	114,665.50	1,370,334.00	1,305,250.00	800	975	2,306,070.00	12 16	622,120.00	778,204.00	106,395.00	65,386,286.50	2.74	
10/18/2008	49,299,053.00	1117 (\$3,N), 1118 (\$20,N) - 10/13/08	3,780,438.00	17 18	5,149,258.00	109,530.00	1,355,601.00	741,849.00	200	200	2,500,644.00	23 32	652,198.00	776,366.00	102,056.00	64,466,993.00	2.70	
10/25/2008	49,977,581.00	1119 (\$1,N), 1120 (\$5,N) - 10/20/08	3,210,762.00	4 5	5,099,671.00	107,104.50	1,339,079.00	789,649.00	225	275	2,456,965.00	42 12	641,206.00	778,434.00	102,972.50	64,503,424.00	2.70	
11/1/2008	50,346,542.00	1121 (\$2,N), 1122 (\$10,N) - 10/27/08	3,325,641.00	6 7	5,234,124.00	109,983.00	1,339,046.00	946,035.00	375	475	2,347,596.00	16 23	626,235.00	805,572.00	104,612.50	65,185,386.50	2.73	
11/8/2008	54,860,087.00	1123 (\$3,N), 1124 (\$7,N) - 11/03/08; 1103 (\$3,N) - 11/05/08; 1063 (\$3,N) - 11/07/08	3,290,417.00	4 5	5,686,701.00	118,495.00	1,397,985.00	1,158,101.00	625	750	2,729,302.50	31 42	692,662.00	871,230.00	112,175.50	70,917,156.00	2.97	
11/15/2008	53,484,812.00	1125 (\$1, N), 1126 (\$5,N) - 11/10/08	3,336,934.00	6 7	5,459,984.00	112,884.00	1,366,024.00	766,955.00	200	225	3,102,251.00	51 62	749,736.00	830,957.00	104,094.00	69,314,631.00	2.90	
11/22/2008	52,806,511.00	0	3,452,481.00	8 9	5,329,591.00	108,861.50	1,358,271.00	743,950.00	200	200	3,666,517.00	73 86	847,201.00	849,077.50	104,797.50	69,267,258.50	2.90	
11/29/2008	52,199,741.00	1127 (\$2,N), 1128 (\$5,N) - 11/24/08	3,585,374.00	10 11	5,340,783.50	111,443.00	1,315,233.00	686,077.00	200	225	4,441,715.00	96 111	968,906.00	845,475.50	102,569.00	69,597,317.00	2.91	
12/6/2008	56,731,851.00	0	3,794,991.00	12 13	5,752,593.00	121,663.50	1,416,446.00	780,328.00	250	200	6,238,355.00	128 146	1,270,214.00	881,841.50	107,357.00	77,095,640.00	3.23	
12/13/2008	54,109,617.00	1129 (\$1, N) - 12/08/08	3,315,658.00	4 5	5,580,770.00	114,295.50	1,384,858.00	766,893.00	225	250	9,150,536.00	170 207	1,691,121.00	846,176.50	101,919.50	77,061,844.50	3.22	
12/20/2008	55,777,328.00	1104 (\$2,N), 1105 (\$5,N), 1106 (\$10,N) - 12/15/08	3,432,340.00	6 7	5,741,120.00	116,075.50	1,401,805.00	741,945.00	200	200	2,736,234.00	12 16	687,875.00	871,579.50	104,543.00	71,610,845.00	3.00	
12/27/2008	57,597,885.00	1077 (\$1,N), 1110 (\$1,N) - 12/22/08	3,582,169.00	8 4	5,628,081.50	115,323.00	1,340,590.00	708,906.00	225	250	2,842,167.00	22 29	706,042.00	828,346.00	100,146.00	73,449,655.50	3.07	
weekly change	3.26%		4.37%			-1.97%	-0.65%	-4.37%			-4.45%		3.87%		2.64%	-4.96%	-4.21%	2.57%
	SALES		SALES		SALES	SALES	SALES	SALES			SALES		SALES	SALES	SALES	SALES	% of Sales	
Startup to date	34,349,453,588.00		10,337,383,056.00		3,388,278,459.50	8,381,162.00	2,141,973,950.00	440,641,137.00			982,301,477.50		231,457,933.00	55,750,051.50	10,085,320.00	52,153,840,106.50	100.0%	
Calendar Year to date	2,728,247,986.00		192,468,594.00		282,817,709.00	6,967,559.00	72,848,419.00	48,239,297.00			181,782,178.50		42,509,280.00	42,374,636.00	6,504,030.50	3,604,759,689.00	100.0%	
Fiscal Year to date 2009	868,867,586.00		58,286,009.00		89,559,507.00	1,895,332.00	22,817,940.00	14,375,419.00			56,162,882.50		13,249,899.00	13,533,080.00	1,746,516.50	1,140,494,171.00	100.0%	