



WEEKLY SALES SUMMARY

Unaudited

Week Ending: 12/27/2014

Texas Lottery Commission
Fiscal Year to Date Sales Comparison
Unaudited

Through the Week Ending 12/27/2014 (17 Weeks)

Sales by Game	FY 2013 *	FY 2014 **	FY 2015	\$ Change		% Change	
				FY 2015 to FY 2013	FY 2015 to FY 2014	FY 2015 to FY 2013	FY 2015 to FY 2014
Instants	\$ 1,001,597,667	\$ 1,032,548,848	\$ 1,075,234,265	\$ 73,636,598	\$ 42,685,417	7.4%	4.1%
Lotto Texas	52,906,416	43,637,203	39,252,998	-13,653,418	-4,384,205	-25.8%	-10.0%
Lotto Extra	-	5,600,981	5,924,368	5,924,368	323,387	-	5.8%
Pick 3	87,445,882	81,978,928	80,979,126	-6,466,756	-999,802	-7.4%	-1.2%
Pick 3 Sum It Up	1,639,857	1,617,761	1,543,364	-96,493	-74,397	-5.9%	-4.6%
Cash Five	18,723,684	17,202,718	16,107,011	-2,616,673	-1,095,707	-14.0%	-6.4%
Texas Two Step	18,757,783	18,249,685	17,924,908	-832,875	-324,777	-4.4%	-1.8%
Mega Millions	34,883,312	87,022,471	51,804,944	16,921,632	-35,217,527	48.5%	-40.5%
Megaplier	8,122,413	17,570,125	11,761,950	3,639,537	-5,808,175	44.8%	-33.1%
Daily 4	22,964,146	26,994,202	27,329,521	4,365,376	335,320	19.0%	1.2%
Daily 4 Sum It Up	1,536,155	1,657,929	1,632,265	96,110	-25,664	6.3%	-1.5%
Powerball	103,128,471	72,659,361	54,587,131	-48,541,340	-18,072,230	-47.1%	-24.9%
Power Play	10,061,998	8,548,866	7,184,768	-2,877,230	-1,364,098	-28.6%	-16.0%
All or Nothing	31,057,646	15,157,192	12,658,176	-18,399,470	-2,499,016	-59.2%	-16.5%
Monopoly	-	-	2,656,700	2,656,700	2,656,700	-	-
Total	\$ 1,392,825,429	\$ 1,430,446,269	\$ 1,406,581,495	\$ 13,756,067	\$ -23,864,774	1.0%	-1.7%

* 2 extra days

** 1 extra day

1 Monopoly sales were suspended after draw on 12/12/14

Texas Lottery Commission
Fiscal Year to Date Cumulative Average Sales Comparison
Unaudited

Through the Week Ending 12/27/2014 (17 Weeks)

Sales by Game	FY 2013	FY 2014	FY 2015
Instant	\$ 8,346,647	\$ 8,676,881	\$ 9,112,155
Lotto Texas	440,887	366,699	332,653
Lotto Extra	-	47,067	50,207
Pick 3	728,716	688,899	686,264
Pick 3 Sum It Up	13,665	13,595	13,079
Cash Five	156,031	144,561	136,500
Texas Two Step	156,315	153,359	151,906
Mega Millions	290,694	731,281	439,025
Megaplier	67,687	147,648	99,678
Daily 4	191,368	226,842	231,606
Daily 4 Sum It Up	12,801	13,932	13,833
Powerball	859,404	610,583	462,603
Power Play	83,850	71,839	60,888
All or Nothing	* 277,300	127,371	107,273
Monopoly	-	- **	48,304
Total	\$ 11,625,365	\$ 12,020,557	\$ 11,945,971

thru 12/29/2012	thru 12/28/2013	thru 12/27/2014
120 days	119 days	118 days
* 112 days		** 55 days

Texas Lottery Commission
Fiscal Year Over Year Change in Sales
Unaudited
FY 2015 Compared to FY 2014

			INSTANT TICKETS				DRAW GAMES				TOTAL SALES			
Week	FY 2015		FY 2015	FY 2014	Difference	% change - Cumulative Sales	FY 2015	FY 2014	Difference	% change - Cumulative Sales	FY 2015	FY 2014	Difference	% change - Cumulative Sales
	Ending	Week												
1	9/6/2014 *		\$54,911,801	\$58,587,757	(\$3,675,956)	-6.3%	\$17,482,488	\$22,369,499	(\$4,887,011)	-21.8%	\$72,394,289	\$80,957,256	(\$8,562,967)	-10.6%
2	9/13/2014		\$61,436,533	\$57,135,931	\$4,300,602	7.5%	\$19,097,081	\$25,412,980	(\$6,315,899)	-24.9%	\$80,533,614	\$82,548,911	(\$2,015,297)	-2.4%
3	9/20/2014		\$60,959,234	\$59,018,194	\$1,941,040	3.3%	\$20,567,894	\$29,161,241	(\$8,593,347)	-29.5%	\$81,527,128	\$88,179,435	(\$6,652,307)	-7.5%
4	9/27/2014		\$59,710,056	\$57,927,984	\$1,782,072	3.1%	\$19,920,828	\$20,012,313	(\$91,485)	-0.5%	\$79,630,884	\$77,940,297	\$1,690,588	2.2%
5	10/4/2014		\$62,119,854	\$62,146,816	(\$26,962)	0.0%	\$18,531,421	\$20,043,557	(\$1,512,136)	-7.5%	\$80,651,275	\$82,190,373	(\$1,539,098)	-1.9%
6	10/11/2014		\$61,253,665	\$60,867,582	\$386,083	0.6%	\$18,985,332	\$19,480,962	(\$495,631)	-2.5%	\$80,238,997	\$80,348,544	(\$109,548)	-0.1%
7	10/18/2014		\$60,230,048	\$60,612,193	(\$382,145)	-0.6%	\$19,538,402	\$20,079,610	(\$541,209)	-2.7%	\$79,768,450	\$80,691,803	(\$923,354)	-1.1%
8	10/25/2014		\$62,384,112	\$59,548,277	\$2,835,835	4.8%	\$21,475,643	\$19,319,928	\$2,155,715	11.2%	\$83,859,755	\$78,868,205	\$4,991,550	6.3%
9	11/1/2014		\$63,404,713	\$61,710,236	\$1,694,477	2.7%	\$23,568,817	\$18,308,976	\$5,259,842	28.7%	\$86,973,530	\$80,019,212	\$6,954,319	8.7%
10	11/8/2014		\$65,486,719	\$61,668,594	\$3,818,125	6.2%	\$23,749,032	\$19,555,070	\$4,193,963	21.4%	\$89,235,751	\$81,223,664	\$8,012,088	9.9%
11	11/15/2014		\$61,745,521	\$60,057,025	\$1,688,496	2.8%	\$17,449,604	\$20,930,071	(\$3,480,468)	-16.6%	\$79,195,125	\$80,987,096	(\$1,791,972)	-2.2%
12	11/22/2014		\$66,353,583	\$63,118,266	\$3,235,317	5.1%	\$17,108,084	\$19,086,770	(\$1,978,687)	-10.4%	\$83,461,667	\$82,205,036	\$1,256,631	1.5%
13	11/29/2014		\$60,471,184	\$57,145,294	\$3,325,890	5.8%	\$17,303,129	\$20,434,618	(\$3,131,489)	-15.3%	\$77,774,313	\$77,579,912	\$194,401	0.3%
14	12/6/2014		\$66,648,696	\$59,883,783	\$6,764,913	11.3%	\$18,862,425	\$22,791,842	(\$3,929,417)	-17.2%	\$85,511,121	\$82,675,625	\$2,835,496	3.4%
15	12/13/2014		\$65,708,630	\$60,310,298	\$5,398,332	9.0%	\$18,649,598	\$35,859,153	(\$17,209,555)	-48.0%	\$84,358,228	\$96,169,451	(\$11,811,223)	-12.3%
16	12/20/2014		\$68,551,298	\$65,088,999	\$3,462,299	5.3%	\$19,051,100	\$46,832,745	(\$27,781,646)	-59.3%	\$87,602,398	\$111,921,744	(\$24,319,347)	-21.7%
17	12/27/2014		\$73,858,618	\$67,721,619	\$6,136,999	9.1%	\$20,006,357	\$18,218,091	\$1,788,266	9.8%	\$93,864,975	\$85,939,710	\$7,925,265	9.2%
18	1/3/2015			\$67,162,991				\$19,140,745				\$86,303,736		
19	1/10/2015			\$65,049,914				\$17,954,333				\$83,004,247		
20	1/17/2015			\$62,731,830				\$18,900,213				\$81,632,043		
21	1/24/2015			\$59,085,886				\$19,558,830				\$78,644,716		
22	1/31/2015			\$64,099,096				\$20,764,006				\$84,863,102		
23	2/7/2015			\$67,717,353				\$22,433,672				\$90,151,025		
24	2/14/2015			\$69,949,998				\$25,572,367				\$95,522,365		
25	2/21/2015			\$72,422,148				\$31,832,665				\$104,254,813		
26	2/28/2015			\$72,883,830				\$21,827,140				\$94,710,970		
27	3/7/2015			\$73,726,744				\$22,528,352				\$96,255,096		
28	3/14/2015			\$71,026,808				\$25,171,358				\$96,198,166		
29	3/21/2015			\$69,174,125				\$25,837,564				\$95,011,689		
30	3/28/2015			\$66,886,917				\$18,604,870				\$85,491,787		
31	4/4/2015			\$71,218,020				\$19,883,667				\$91,101,687		
32	4/11/2015			\$65,970,648				\$18,875,485				\$84,846,133		
33	4/18/2015			\$64,922,280				\$19,723,048				\$84,645,328		
34	4/25/2015			\$60,578,829				\$18,978,148				\$79,556,977		
35	5/2/2015			\$64,244,545				\$19,029,632				\$83,274,177		
36	5/9/2015			\$65,679,029				\$19,350,478				\$85,029,507		
37	5/16/2015			\$63,627,971				\$19,865,609				\$83,493,580		
38	5/23/2015			\$61,902,451				\$19,892,846				\$81,795,297		
39	5/30/2015			\$61,264,953				\$20,014,636				\$81,279,589		
40	6/6/2015			\$64,019,948				\$21,782,886				\$85,802,834		
41	6/13/2015			\$59,742,598				\$19,736,748				\$79,479,346		
42	6/20/2015			\$59,010,863				\$17,095,336				\$76,106,199		

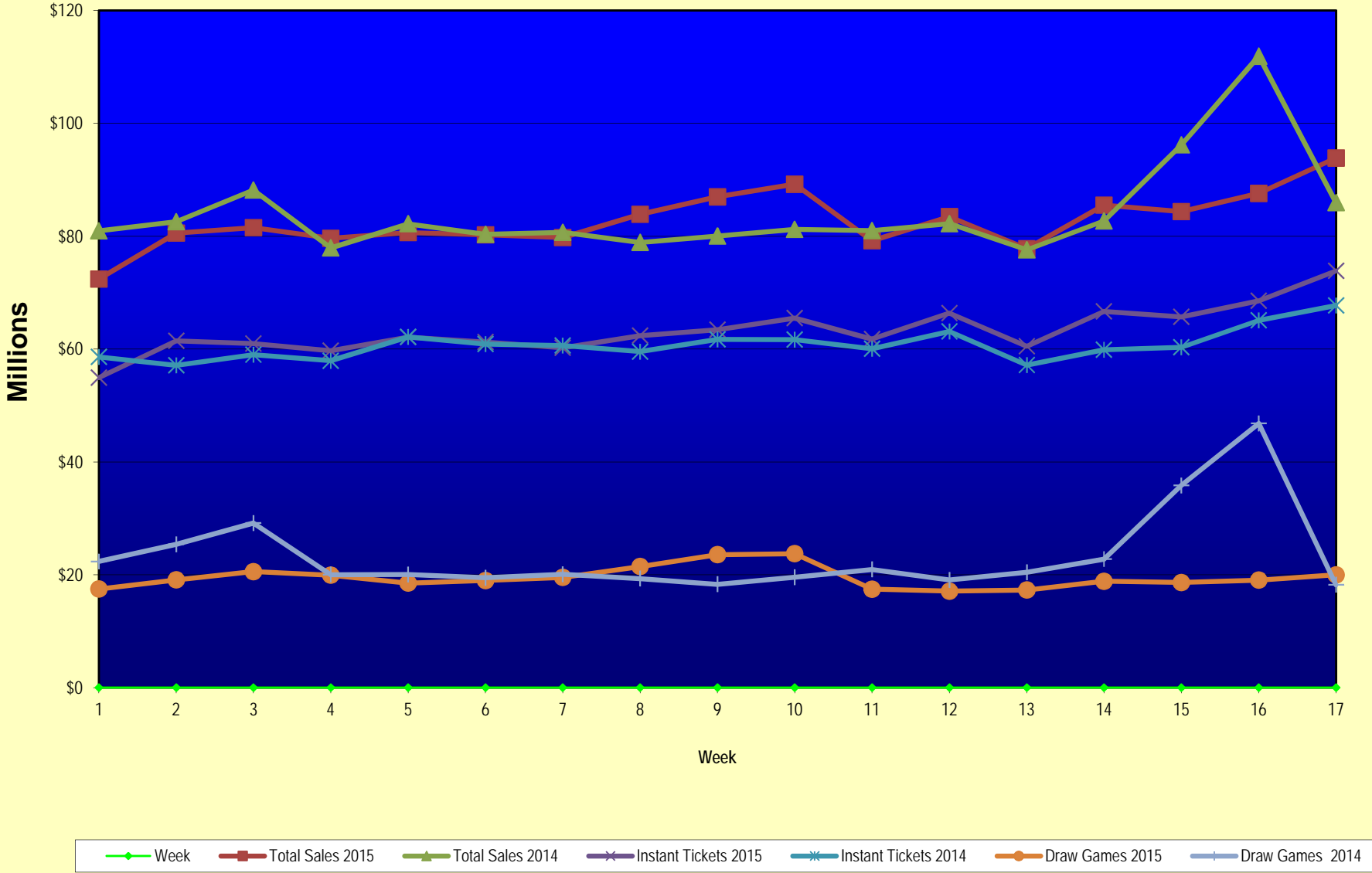
Texas Lottery Commission
Fiscal Year Over Year Change in Sales
Unaudited
FY 2015 Compared to FY 2014

			INSTANT TICKETS				DRAW GAMES				TOTAL SALES			
FY 2015			FY 2015	FY 2014	Difference	% change - Cumulative Sales	FY 2015	FY 2014	Difference	% change - Cumulative Sales	FY 2015	FY 2014	Difference	% change - Cumulative Sales
Week	Week	Ending												
43	6/27/2015			\$58,102,191				\$17,635,736				\$75,737,927		
44	7/4/2015			\$61,566,071				\$18,521,529				\$80,087,600		
45	7/11/2015			\$58,729,674				\$17,913,387				\$76,643,061		
46	7/18/2015			\$58,202,035				\$17,602,032				\$75,804,067		
47	7/25/2015			\$57,220,932				\$17,736,889				\$74,957,821		
48	8/1/2015			\$64,207,294				\$18,208,743				\$82,416,037		
49	8/8/2015			\$60,066,007				\$19,022,945				\$79,088,952		
50	8/15/2015			\$58,374,809				\$18,567,246				\$76,942,055		
51	8/22/2015			\$57,277,475				\$18,916,460				\$76,193,935		
52	8/29/2015			\$61,884,256				\$17,283,925				\$79,168,181		
	8/31/2015 **			\$7,949,803				\$706,956				\$8,656,759		
Total thru Current Week			\$1,075,234,265	\$1,032,548,848	\$42,685,417	4.1%	\$331,347,230	\$397,897,421	(\$66,550,191)	-16.7%	\$1,406,581,495	\$1,430,446,269	(\$23,864,774)	-1.7%
Fiscal Year Total			\$1,075,234,265	\$3,280,229,170			\$331,347,230	\$1,104,367,893			\$1,406,581,495	\$4,384,597,063		

* FY 15 includes 6 days

** FY 15 includes 2 days; FY 14 includes 1 day

Texas Lottery Commission Fiscal Year Over Year Change in Sales



Note: Week 1 is not a full week of sales as this report is prepared on a Fiscal Year basis.

Texas Lottery Commission
Instant Tickets by Price Point
Sales, Prize Expense, Sales Contribution and Payout Percentage With Year Over Year Changes
Unaudited

Fiscal Year	Price Point	# of Active Games	FY Sales	% of Instant Ticket Sales	Year over Year Change in Sales	FY Prize Expense	Year over Year Change in Prize Expense	FY Sales Contribution	Year over Year Change in Contribution	Average Prize Payout %	Year over Year Change in Payout %
2014	\$1.00	22	58,803,719	5.7%		35,241,906		23,561,813		59.9%	-1.3%
Through	\$2.00	29	123,244,128	11.9%		79,954,441		43,289,687		64.9%	-0.2%
12/28/2013	\$3.00	14	109,278,471	10.6%		71,532,496		37,745,975		65.5%	-0.1%
	\$5.00	41	345,612,160	33.5%		234,633,185		110,978,975		67.9%	-0.2%
	\$10.00	12	194,796,770	18.9%		137,057,851		57,738,919		70.4%	-1.0%
	\$20.00	8	162,211,600	15.7%		121,466,099		40,745,501		74.9%	0.0%
	\$50.00	2	38,602,000	3.7%		29,968,634		8,633,366		77.6%	0.0%
Total		128	\$1,032,548,848			\$709,854,612		\$322,694,236		68.7%	-0.3%
2015	\$1.00	17	54,080,508	5.0%		33,089,601		20,990,907		61.2%	2.1%
thru	\$2.00	27	112,394,932	10.5%		74,238,240		38,156,692		66.1%	1.9%
12/27/2014	\$3.00	12	105,304,620	9.8%		69,404,657		35,899,963		65.9%	0.4%
	\$5.00	38	343,405,445	31.9%		233,296,891		110,108,554		67.9%	0.0%
	\$10.00	14	212,662,120	19.8%		149,973,537		62,688,583		70.5%	0.3%
	\$20.00	8	198,332,440	18.4%		148,707,546		49,624,895		75.0%	0.1%
	\$50.00	3	49,054,200	4.6%		38,123,342		10,930,858		77.7%	0.1%
Total		119	\$1,075,234,265			\$746,833,815		\$328,400,450		69.5%	0.8%
Variance	\$1.00	-5	-4,723,211		-8.0%	-2,152,305	-6.1%	-2,570,906	-10.9%	1.25%	
2015 to	\$2.00	-2	-10,849,196		-8.8%	-5,716,200	-7.1%	-5,132,996	-11.9%	1.18%	
2014	\$3.00	-2	-3,973,851		-3.6%	-2,127,839	-3.0%	-1,846,012	-4.9%	0.45%	
	\$5.00	-3	-2,206,715		-0.6%	-1,336,294	-0.6%	-870,421	-0.8%	0.05%	
	\$10.00	2	17,865,350		9.2%	12,915,687	9.4%	4,949,663	8.6%	0.16%	
	\$20.00	0	36,120,840		22.3%	27,241,447	22.4%	8,879,393	21.8%	0.10%	
	\$50.00	1	10,452,200		27.1%	8,154,708	27.2%	2,297,492	26.6%	0.08%	
Total		-9	\$42,685,417		4.1%	\$36,979,203	5.2%	\$5,706,214	1.8%	0.71%	

Notes - Instant Ticket Variances

Texas Lottery Commission
Instant Tickets by Price Point
Sales, Prize Expense, Sales Contribution and Payout Percentage With Year Over Year Changes
 Unaudited

		FY 2015		FY 2014		Difference
Sales	\$1 - \$5	\$615,185,505		\$636,938,478		-\$21,752,973
Prize Exp.	\$1 - \$5	\$410,029,390		\$421,362,028		-\$11,332,639
Sales Cont.	\$1 - \$5	\$205,156,115		\$215,576,450		-\$10,420,334
Prize Exp. %	\$1 - \$5	66.7%		66.2%		0.5%
		FY 2015		FY 2014		Difference
Sales	\$10 - \$50	\$460,048,760		\$395,610,370		\$64,438,390
Prize Exp.	\$10 - \$50	\$336,804,425		\$288,492,584		\$48,311,841
Sales Cont.	\$10 - \$50	\$123,244,335		\$107,117,786		\$16,126,549
Prize Exp. %	\$10 - \$50	73.2%		72.9%		0.3%
		FY 2015		FY 2014		Difference
Sales	Instant	\$1,075,234,265		\$1,032,548,848		\$42,685,417
Prize Exp.	Instant	\$746,833,815		\$709,854,612		\$36,979,203
Sales Cont.	Instant	\$328,400,450		\$322,694,236		\$5,706,214
Prize Exp. %	Instant	69.5%		68.7%		0.7%

		FY 2015		FY 2014		Difference
Sales	\$1 - \$10	\$827,847,625		\$831,735,248		-\$3,887,623
Prize Exp.	\$1 - \$10	\$560,002,927		\$558,419,879		\$1,583,048
Sales Cont.	\$1 - \$10	\$267,844,698		\$273,315,369		-\$5,470,671
Prize Exp. %	\$1 - \$10	67.6%		67.1%		0.5%
		FY 2015		FY 2014		Difference
Sales	\$20 - \$50	\$247,386,640		\$200,813,600		\$46,573,040
Prize Exp.	\$20 - \$50	\$186,830,888		\$151,434,733		\$35,396,155
Sales Cont.	\$20 - \$50	\$60,555,752		\$49,378,867		\$11,176,885
Prize Exp. %	\$20 - \$50	75.5%		75.4%		0.1%
		FY 2015		FY 2014		Difference
Sales	Instant	\$1,075,234,265		\$1,032,548,848		\$42,685,417
Prize Exp.	Instant	\$746,833,815		\$709,854,612		\$36,979,203
Sales Cont.	Instant	\$328,400,450		\$322,694,236		\$5,706,214
Prize Exp. %	Instant	69.5%		68.7%		0.7%

Texas Lottery Commission
Weekly Sales Summary
& Comparison to Previous Week
 Unaudited

	Week Ending 12/27/2014	% of Sales	Week Ending 12/20/2014	% of Sales	\$ change	% change
	<u>THIS WEEK</u>		<u>LAST WEEK</u>			
Total Sales	<u>\$93,864,975</u>		<u>\$87,602,398</u>		<u>\$6,262,577</u>	7.15%
Instant Tickets	<u>\$73,858,618</u>	78.7%	<u>\$68,551,298</u>	78.3%	<u>\$5,307,320</u>	7.74%
Lotto	\$2,569,741	2.7%	\$2,403,956	2.7%	\$165,785	6.90%
Lotto Extra	\$386,983	0.4%	\$365,207	0.4%	\$21,776	5.96%
Pick 3	\$4,792,061	5.1%	\$4,980,735	5.7%	-\$188,674	-3.79%
Pick 3 Sum It Up	\$87,561	0.1%	\$94,034	0.1%	-\$6,473	-6.88%
Cash Five	\$939,518	1.0%	\$972,605	1.1%	-\$33,087	-3.40%
Texas Two Step	\$839,204	0.9%	\$840,763	1.0%	-\$1,559	-0.19%
Mega Millions	\$3,523,976	3.8%	\$3,150,078	3.6%	\$373,898	11.87%
Megaplier	\$786,676	0.8%	\$726,548	0.8%	\$60,128	8.28%
Daily 4	\$1,640,658	1.7%	\$1,722,159	2.0%	-\$81,501	-4.73%
Daily 4 Sum It Up	\$93,236	0.1%	\$99,838	0.1%	-\$6,602	-6.61%
Powerball	\$3,244,628	3.5%	\$2,593,858	3.0%	\$650,770	25.09%
Power Play	\$431,074	0.5%	\$364,498	0.4%	\$66,576	18.27%
All or Nothing	\$671,042	0.7%	\$736,822	0.8%	-\$65,780	-8.93%
Monopoly	\$0	0.0%	\$0	0.0%	\$0	0.00%
Total Draw Game Sales	<u>\$20,006,357</u>		<u>\$19,051,100</u>		<u>\$955,257</u>	5.01%

* Totals may not sum due to rounding.

Texas Lottery Commission
Weekly Sales Summary
Unaudited

INSTANT TICKETS
TOP TEN SELLING GAMES

For the Week Ending: 12/27/14

Rank	Price Point	Game	Sales (Millions)
1	\$ 20	HOLIDAY GAME BOOK	\$ 6.270
2	\$ 10	50X THE CASH	\$ 4.379
3	\$ 10	HOLIDAY MAGIC	\$ 3.862
4	\$ 5	20X THE CASH	\$ 3.702
5	\$ 5	HOLIDAY GOLD	\$ 2.873
6	\$ 5	CAESARS	\$ 2.758
7	\$ 50	MILLIONNAIRE'S CLUB	\$ 2.642
8	\$ 3	LOTERIA	\$ 2.588
9	\$ 5	\$100,000 MERRY MONEY	\$ 2.327
10	\$ 20	100X THE CASH	\$ 2.140

Texas Lottery Commission
Prize Payout Tracking Report
Unaudited

Through the Week Ending: 12/27/14

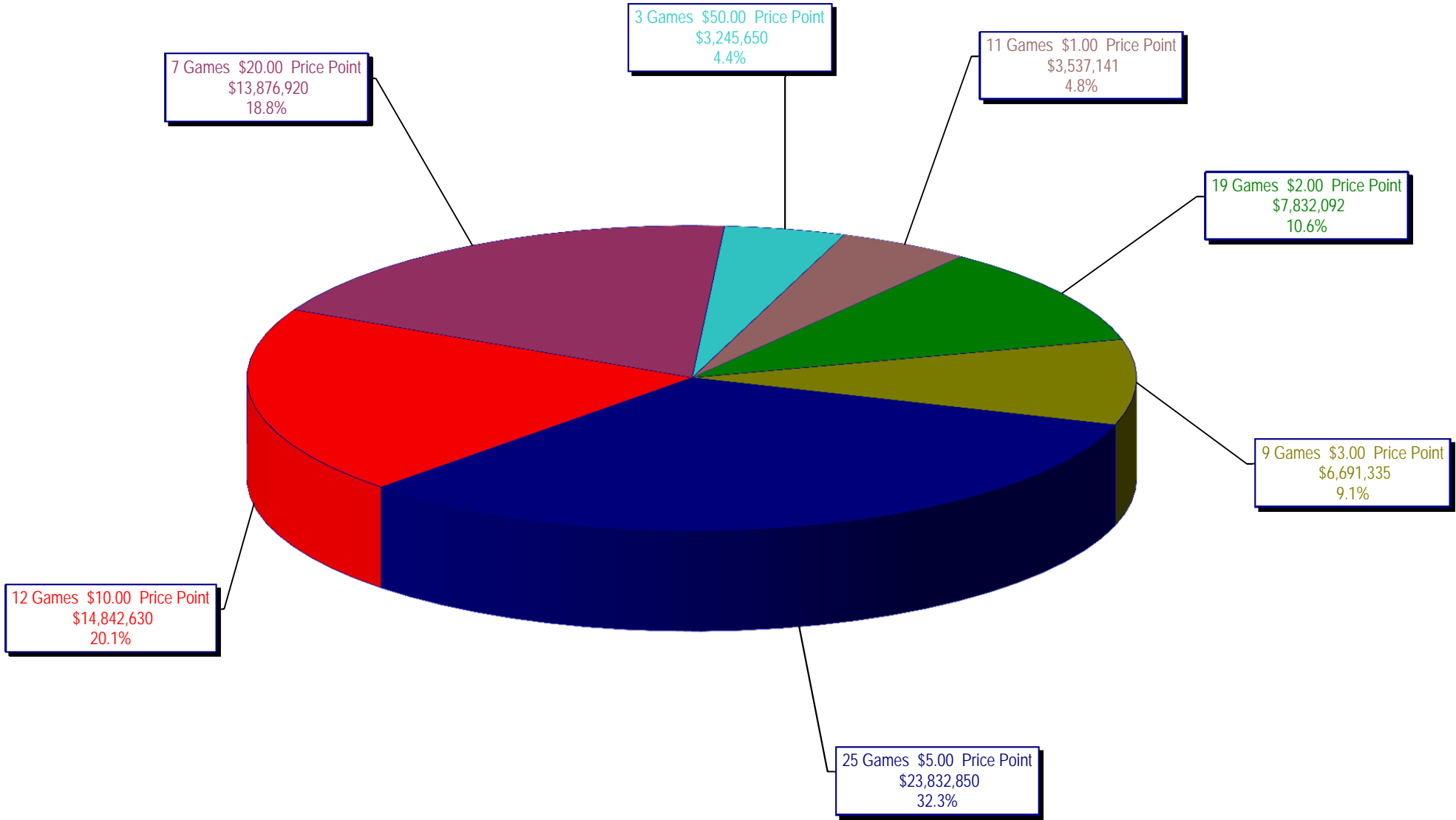
Draw Game Sales

		FY Sales Through Week Ending 12/27/2014		FY Prize Expense Through Week Ending 12/27/2014	Actual* Prize Payout	Base Payout (Prize Pool)
Lotto	\$	39,252,998	\$	19,728,397	50.26%	54.00%
Lotto Extra		5,924,368		3,188,722	53.82%	53.70%
Pick 3		80,979,126		38,692,980	47.78%	50.00%
Pick 3 Sum It Up		1,543,364		678,545	43.97%	50.00%
Cash Five		16,107,011		8,053,517	50.00%	50.00%
Texas Two Step		17,924,908		9,238,260	51.54%	50.00%
Mega Millions		51,804,944		26,396,237	50.95%	50.00%**
Megaplier		11,761,950		5,878,392	49.98%	N/A
Daily 4		27,329,521		12,889,375	47.16%	50.00%
Daily 4 Sum It Up		1,632,265		676,798	41.46%	50.00%
Powerball		54,587,131		27,372,118	50.14%	50.00%**
Power Play		7,184,768		3,602,597	50.14%	N/A
All or Nothing		12,658,176		7,839,232	61.93%	55.98%
Monopoly		2,656,700		3,317,028	124.86%	50.00%
Totals	\$	331,347,230	\$	167,552,197	50.57%	

* Before Unclaimed Prizes

** Estimated; depends on # of guaranteed prizes won in Texas

Texas Lottery Commission
Instant Ticket Sales
For the Week Ending 12/27/14
(Unaudited)



Texas Lottery Commission
All Game Sales
For the Week Ending 12/27/14
(Unaudited)

