



*WEEKLY SALES SUMMARY*

Unaudited

**Week Ending: 12/28/2013**

Texas Lottery Commission  
Fiscal Year to Date Sales Comparison  
Unaudited

Through the Week Ending 12/28/2013 (17 Weeks)

Sales by Game	FY 2012 *	FY 2013 **	FY 2014	\$ Change		% Change	
				FY 2014 to FY 2012	FY 2014 to FY 2013	FY 2014 to FY 2012	FY 2014 to FY 2013
Instants	\$ 952,738,542	\$ 1,001,597,667	\$ 1,032,548,848	\$ 79,810,306	\$ 30,951,181	8.4%	3.1%
Lotto Texas	58,944,762	52,906,416	43,637,203	-15,307,559	-9,269,213	-26.0%	-17.5%
Lotto Extra	-	-	5,600,981	5,600,981	5,600,981	-	-
Pick 3	88,465,059	87,445,882	81,978,928	-6,486,131	-5,466,954	-7.3%	-6.3%
Pick 3 Sum It Up	1,798,870	1,639,857	1,617,761	-181,109	-22,096	-10.1%	-1.3%
Cash Five	21,543,469	18,723,684	17,202,718	-4,340,751	-1,520,966	-20.1%	-8.1%
Texas Two Step	20,490,970	18,757,783	18,249,685	-2,241,285	-508,098	-10.9%	-2.7%
Mega Millions	53,364,069	34,883,312	87,022,471	33,658,402	52,139,159	63.1%	149.5%
Megaplier	11,687,837	8,122,413	17,570,125	5,882,288	9,447,712	50.3%	116.3%
Daily 4	20,864,615	22,964,146	26,994,202	6,129,587	4,030,056	29.4%	17.5%
Daily 4 Sum It Up	1,547,822	1,536,155	1,657,929	110,107	121,774	7.1%	7.9%
Powerball	42,003,725	103,128,471	72,659,361	30,655,636	-30,469,110	73.0%	-29.5%
Power Play	9,207,552	10,061,998	8,548,866	-658,686	-1,513,132	-7.2%	-15.0%
All or Nothing	-	31,057,646	15,157,192	15,157,192	-15,900,454	-	-51.2%
<b>Total</b>	<b>\$ 1,282,657,291</b>	<b>\$ 1,392,825,429</b>	<b>\$ 1,430,446,269</b>	<b>\$ 147,788,978</b>	<b>\$ 37,620,840</b>	<b>11.5%</b>	<b>2.7%</b>

\* 3 extra days

\*\* 1 extra day

Texas Lottery Commission  
Fiscal Year to Date Cumulative Average Sales Comparison  
Unaudited

Through the Week Ending 12/28/2013 (17 Weeks)

Sales by Game	FY 2012	FY 2013	FY 2014
Instants	\$ 7,809,332	\$ 8,346,647	\$ 8,676,881
Lotto Texas	483,154	440,887	366,699
Lotto Extra	-	-	47,067
Pick 3	725,123	728,716	688,899
Pick 3 Sum It Up	14,745	13,665	13,595
Cash Five	176,586	156,031	144,561
Texas Two Step	167,959	156,315	153,359
Mega Millions	437,410	290,694	731,281
Megaplier	95,802	67,687	147,648
Daily 4	171,021	191,368	226,842
Daily 4 Sum It Up	12,687	12,801	13,932
Powerball	344,293	859,404	610,583
Power Play	75,472	83,850	71,839
All or Nothing	- *	277,300	127,371
<b>Total</b>	<b>\$ <u>10,513,584</u></b>	<b>\$ <u>11,625,365</u></b>	<b>\$ <u>12,020,557</u></b>

thru 12/31/2011  
122 days

thru 12/29/2012  
120 days  
\*  
112 days

thru 12/28/2013  
119 days

Texas Lottery Commission  
Fiscal Year Over Year Change in Sales  
Unaudited  
FY 2014 Compared to FY 2013

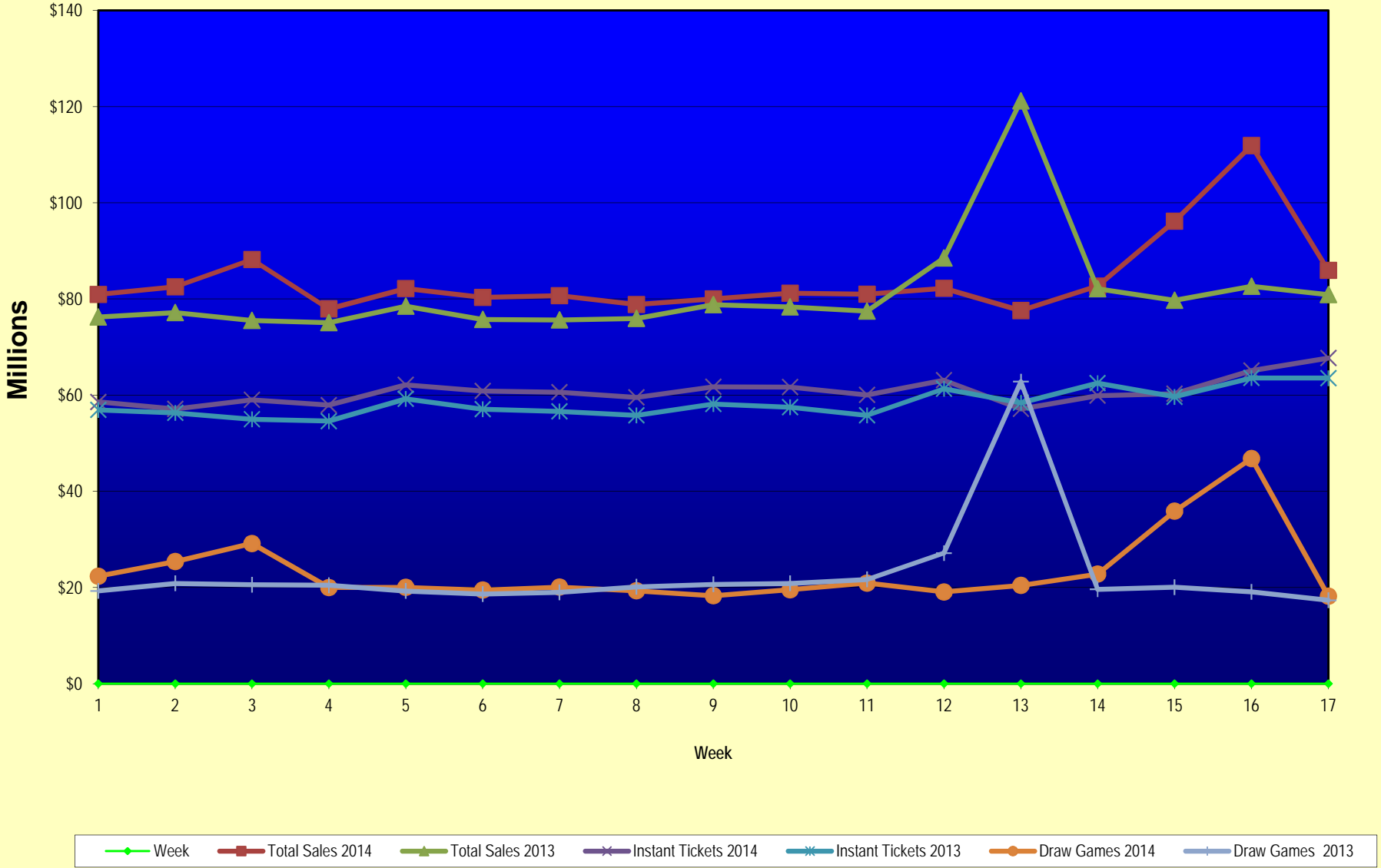
			INSTANT TICKETS				DRAW GAMES				TOTAL SALES			
FY 2014			% change -				% change -				% change -			
Week	Week	Ending	FY 2014	FY 2013	Difference	Cumulative Sales	FY 2014	FY 2013	Difference	Cumulative Sales	FY 2014	FY 2013	Difference	Cumulative Sales
0	9/1/2013 *		\$0	\$9,611,328	(\$9,611,328)	-100.0%	\$0	\$3,712,535	(\$3,712,535)	-100.0%	\$0	\$13,323,863	(\$13,323,863)	-100.0%
1	9/7/2013		\$58,587,757	\$56,941,761	\$1,645,996	2.9%	\$22,369,499	\$19,305,417	\$3,064,082	15.9%	\$80,957,256	\$76,247,178	\$4,710,078	6.2%
2	9/14/2013		\$57,135,931	\$56,302,875	\$833,056	1.5%	\$25,412,980	\$20,857,230	\$4,555,750	21.8%	\$82,548,911	\$77,160,105	\$5,388,806	7.0%
3	9/21/2013		\$59,018,194	\$54,974,438	\$4,043,756	7.4%	\$29,161,241	\$20,570,277	\$8,590,964	41.8%	\$88,179,435	\$75,544,715	\$12,634,720	16.7%
4	9/28/2013		\$57,927,984	\$54,606,674	\$3,321,310	6.1%	\$20,012,313	\$20,462,690	(\$450,378)	-2.2%	\$77,940,297	\$75,069,364	\$2,870,933	3.8%
5	10/5/2013		\$62,146,816	\$59,223,327	\$2,923,489	4.9%	\$20,043,557	\$19,279,973	\$763,584	4.0%	\$82,190,373	\$78,503,300	\$3,687,073	4.7%
6	10/12/2013		\$60,867,582	\$57,075,606	\$3,791,976	6.6%	\$19,480,962	\$18,638,467	\$842,496	4.5%	\$80,348,544	\$75,714,073	\$4,634,472	6.1%
7	10/19/2013		\$60,612,193	\$56,630,134	\$3,982,059	7.0%	\$20,079,610	\$18,998,943	\$1,080,668	5.7%	\$80,691,803	\$75,629,077	\$5,062,727	6.7%
8	10/26/2013		\$59,548,277	\$55,789,743	\$3,758,534	6.7%	\$19,319,928	\$20,130,190	(\$810,262)	-4.0%	\$78,868,205	\$75,919,933	\$2,948,273	3.9%
9	11/2/2013		\$61,710,236	\$58,142,777	\$3,567,459	6.1%	\$18,308,976	\$20,638,008	(\$2,329,032)	-11.3%	\$80,019,212	\$78,780,785	\$1,238,427	1.6%
10	11/9/2013		\$61,668,594	\$57,484,804	\$4,183,790	7.3%	\$19,555,070	\$20,862,872	(\$1,307,802)	-6.3%	\$81,223,664	\$78,347,676	\$2,875,988	3.7%
11	11/16/2013		\$60,057,025	\$55,805,228	\$4,251,797	7.6%	\$20,930,071	\$21,660,705	(\$730,634)	-3.4%	\$80,987,096	\$77,465,933	\$3,521,163	4.5%
12	11/23/2013		\$63,118,266	\$61,331,977	\$1,786,289	2.9%	\$19,086,770	\$27,172,853	(\$8,086,083)	-29.8%	\$82,205,036	\$88,504,830	(\$6,299,794)	-7.1%
13	11/30/2013		\$57,145,294	\$58,420,598	(\$1,275,304)	-2.2%	\$20,434,618	\$62,797,943	(\$42,363,326)	-67.5%	\$77,579,912	\$121,218,541	(\$43,638,630)	-36.0%
14	12/7/2013		\$59,883,783	\$62,489,745	(\$2,605,962)	-4.2%	\$22,791,842	\$19,630,155	\$3,161,687	16.1%	\$82,675,625	\$82,119,900	\$555,725	0.7%
15	12/14/2013		\$60,310,298	\$59,661,880	\$648,418	1.1%	\$35,859,153	\$20,064,982	\$15,794,171	78.7%	\$96,169,451	\$79,726,862	\$16,442,589	20.6%
16	12/21/2013		\$65,088,999	\$63,556,886	\$1,532,113	2.4%	\$46,832,745	\$19,084,653	\$27,748,093	145.4%	\$111,921,744	\$82,641,539	\$29,280,206	35.4%
17	12/28/2013		\$67,721,619	\$63,547,886	\$4,173,733	6.6%	\$18,218,091	\$17,359,874	\$858,217	4.9%	\$85,939,710	\$80,907,760	\$5,031,950	6.2%
18	1/4/2014			\$60,452,721				\$18,833,047				\$79,285,768		
19	1/11/2014			\$58,862,997				\$18,879,167				\$77,742,164		
20	1/18/2014			\$58,494,057				\$19,258,004				\$77,752,061		
21	1/25/2014			\$57,871,744				\$20,093,215				\$77,964,959		
22	2/1/2014			\$61,846,715				\$21,032,335				\$82,879,050		
23	2/8/2014			\$70,374,906				\$21,183,638				\$91,558,544		
24	2/15/2014			\$71,002,438				\$19,295,197				\$90,297,635		
25	2/22/2014			\$71,203,934				\$19,729,989				\$90,933,923		
26	3/1/2014			\$74,551,567				\$20,278,327				\$94,829,894		
27	3/8/2014			\$75,360,138				\$21,447,763				\$96,807,901		
28	3/15/2014			\$70,065,528				\$22,055,563				\$92,121,091		
29	3/22/2014			\$70,137,284				\$28,709,024				\$98,846,308		
30	3/29/2014			\$68,758,522				\$18,597,091				\$87,355,613		
31	4/5/2014			\$73,270,054				\$20,048,992				\$93,319,046		
32	4/12/2014			\$64,738,900				\$19,697,793				\$84,436,693		
33	4/19/2014			\$63,252,072				\$20,245,083				\$83,497,155		
34	4/26/2014			\$62,766,647				\$21,162,888				\$83,929,535		
35	5/3/2014			\$66,251,082				\$23,628,101				\$89,879,183		
36	5/10/2014			\$65,748,723				\$26,735,480				\$92,484,203		
37	5/17/2014			\$63,348,463				\$61,124,604				\$124,473,067		
38	5/24/2014			\$60,537,133				\$18,730,138				\$79,267,271		
39	5/31/2014			\$58,547,555				\$18,317,891				\$76,865,446		
40	6/7/2014			\$62,113,508				\$18,374,935				\$80,488,443		

Texas Lottery Commission  
Fiscal Year Over Year Change in Sales  
Unaudited  
FY 2014 Compared to FY 2013

			INSTANT TICKETS				DRAW GAMES				TOTAL SALES			
FY 2014			FY 2014	FY 2013	Difference	% change - Cumulative Sales	FY 2014	FY 2013	Difference	% change - Cumulative Sales	FY 2014	FY 2013	Difference	% change - Cumulative Sales
Week	Week	Ending												
41	6/14/2014			\$58,988,468				\$18,101,981				\$77,090,449		
42	6/21/2014			\$61,199,484				\$18,675,967				\$79,875,451		
43	6/28/2014			\$59,435,096				\$18,026,964				\$77,462,060		
44	7/5/2014			\$63,457,072				\$18,556,140				\$82,013,212		
45	7/12/2014			\$60,046,267				\$17,669,864				\$77,716,131		
46	7/19/2014			\$61,952,164				\$19,002,142				\$80,954,306		
47	7/26/2014			\$58,251,955				\$20,309,411				\$78,561,366		
48	8/2/2014			\$63,652,675				\$25,295,830				\$88,948,505		
49	8/9/2014			\$56,800,305				\$33,349,261				\$90,149,566		
50	8/16/2014			\$55,607,891				\$17,625,289				\$73,233,180		
51	8/23/2014			\$55,988,956				\$18,099,850				\$74,088,806		
52	8/30/2014			\$56,059,026				\$20,294,026				\$76,353,052		
Total thru Current Week			\$1,032,548,848	\$1,001,597,667	\$30,951,181	3.1%	\$397,897,421	\$391,227,762	\$6,669,659	1.7%	\$1,430,446,269	\$1,392,825,429	\$37,620,840	2.7%
Fiscal Year Total			\$1,032,548,848	\$3,222,593,714			\$397,897,421	\$1,153,692,742			\$1,430,446,269	\$4,376,286,456		

\* FY 13 includes 1 day

### Texas Lottery Commission Fiscal Year Over Year Change in Sales



Note: Week 1 is not a full week of sales as this report is prepared on a Fiscal Year basis.

Texas Lottery Commission  
**Instant Tickets by Price Point**  
Sales, Prize Expense, Sales Contribution and Payout Percentage With Year Over Year Changes  
Unaudited

Fiscal Year	Price Point	# of Active Games	FY Sales	% of Instant Ticket Sales	Year over Year Change in Sales	FY Prize Expense	Year over Year Change in Prize Expense	FY Sales Contribution	Year over Year Change in Contribution	Average Prize Payout %	Year over Year Change in Payout %
2013	\$1.00	26	60,612,395	6.1%		37,266,388		23,346,007		61.5%	1.4%
thru	\$2.00	28	128,044,080	12.8%		83,243,180		44,800,900		65.0%	-0.1%
12/29/2012	\$3.00	14	127,913,586	12.8%		83,893,830		44,019,756		65.6%	0.1%
	\$5.00	42	306,440,285	30.6%		208,097,360		98,342,925		67.9%	-0.1%
	\$7.00	2	14,881,881	1.5%		10,114,712		4,767,169		68.0%	0.0%
	\$10.00	11	171,059,970	17.1%		120,790,605		50,269,365		70.6%	-0.4%
	\$20.00	7	146,932,220	14.7%		109,992,489		36,939,731		74.9%	0.1%
	\$50.00	3	45,713,250	4.6%		35,491,994		10,221,256		77.6%	0.0%
<b>Total</b>		<b>133</b>	<b>\$1,001,597,667</b>			<b>\$688,890,558</b>		<b>\$312,707,109</b>		<b>68.8%</b>	<b>0.2%</b>
2014	\$1.00	22	58,803,719	5.7%		35,241,906		23,561,813		59.9%	-1.3%
thru	\$2.00	29	123,244,128	11.9%		79,954,441		43,289,687		64.9%	-0.2%
12/28/2013	\$3.00	14	109,278,471	10.6%		71,532,496		37,745,975		65.5%	-0.1%
	\$5.00	41	345,612,160	33.5%		234,633,185		110,978,975		67.9%	-0.2%
	\$7.00	0	0	0.0%		0		-		0.0%	0.0%
	\$10.00	12	194,796,770	18.9%		137,057,851		57,738,919		70.4%	-1.0%
	\$20.00	8	162,211,600	15.7%		121,466,099		40,745,501		74.9%	0.0%
	\$50.00	2	38,602,000	3.7%		29,968,634		8,633,366		77.6%	0.0%
<b>Total</b>		<b>128</b>	<b>\$1,032,548,848</b>			<b>\$709,854,612</b>		<b>\$322,694,236</b>		<b>68.7%</b>	<b>-0.3%</b>
Variance	\$1.00	-4	-1,808,676		-3.0%	-2,024,482	-5.4%	215,806	0.9%	-1.55%	
2014 to	\$2.00	1	-4,799,952		-3.7%	-3,288,739	-4.0%	-1,511,213	-3.4%	-0.14%	
2013	\$3.00	0	-18,635,115		-14.6%	-12,361,334	-14.7%	-6,273,781	-14.3%	-0.13%	
	\$5.00	-1	39,171,875		12.8%	26,535,825	12.8%	12,636,050	12.8%	-0.02%	
	\$7.00	-2	-14,881,881		-100.0%	-10,114,712	-100.0%	-4,767,169	-100.0%	-67.97%	
	\$10.00	1	23,736,800		13.9%	16,267,246	13.5%	7,469,554	14.9%	-0.25%	
	\$20.00	1	15,279,380		10.4%	11,473,610	10.4%	3,805,770	10.3%	0.02%	
	\$50.00	-1	-7,111,250		-15.6%	-5,523,359	-15.6%	-1,587,891	-15.5%	-0.01%	
<b>Total</b>		<b>-5</b>	<b>\$30,951,181</b>		<b>3.1%</b>	<b>\$20,964,054</b>	<b>3.0%</b>	<b>\$9,987,127</b>	<b>3.2%</b>	<b>-0.03%</b>	

Notes - Instant Ticket Variances

Texas Lottery Commission  
**Instant Tickets by Price Point**  
**Sales, Prize Expense, Sales Contribution and Payout Percentage With Year Over Year Changes**  
 Unaudited

			FY 2014		FY 2013	Difference
Sales	\$1 - \$7	1	\$636,938,478		\$637,892,227	-\$953,749
Prize Exp.	\$1 - \$7	1	\$421,362,028		\$422,615,470	-\$1,253,442
Sales Cont.	\$1 - \$7	1	\$215,576,450		\$215,276,757	\$299,693
Prize Exp. %	\$1 - \$7	1	66.2%		66.3%	-0.1%
			FY 2014		FY 2013	Difference
Sales	\$10 - \$50	2	\$395,610,370		\$363,705,440	\$31,904,930
Prize Exp.	\$10 - \$50	2	\$288,492,584		\$266,275,088	\$22,217,496
Sales Cont.	\$10 - \$50	1	\$107,117,786		\$97,430,352	\$9,687,434
Prize Exp. %	\$10 - \$50	2	72.9%		73.2%	-0.3%
			FY 2014		FY 2013	Difference
Sales	Instant		\$1,032,548,848		\$1,001,597,667	\$30,951,181
Prize Exp.	Instant		\$709,854,612		\$688,890,558	\$20,964,054
Sales Cont.	Instant		\$322,694,236		\$312,707,109	\$9,987,127
Prize Exp. %	Instant		68.7%		68.8%	0.0%

			FY 2014		FY 2013	Difference
Sales	\$1 - \$10		\$831,735,248		\$808,952,197	\$22,783,051
Prize Exp.	\$1 - \$10		\$558,419,879		\$543,406,076	\$15,013,804
Sales Cont.	\$1 - \$10		\$273,315,369		\$265,546,121	\$7,769,247
Prize Exp. %	\$1 - \$10		67.1%		67.2%	0.0%
			FY 2014		FY 2013	Difference
Sales	\$20 - \$50		\$200,813,600		\$192,645,470	\$8,168,130
Prize Exp.	\$20 - \$50		\$151,434,733		\$145,484,482	\$5,950,251
Sales Cont.	\$20 - \$50		\$49,378,867		\$47,160,988	\$2,217,879
Prize Exp. %	\$20 - \$50		75.4%		75.5%	-0.1%
			FY 2014		FY 2013	Difference
Sales	Instant		\$1,032,548,848		\$1,001,597,667	\$30,951,181
Prize Exp.	Instant		\$709,854,612		\$688,890,558	\$20,964,054
Sales Cont.	Instant		\$322,694,236		\$312,707,109	\$9,987,127
Prize Exp. %	Instant		68.7%		68.8%	0.0%



Texas Lottery Commission  
**Weekly Sales Summary**  
**& Comparison to Previous Week**  
 Unaudited

	Week Ending 12/28/2013	% of Sales	Week Ending 12/21/2013	% of Sales	\$ change	% change
	<u>THIS WEEK</u>		<u>LAST WEEK</u>			
Total Sales	<u>\$85,939,710</u>		<u>\$111,921,744</u>		<u>-\$25,982,035</u>	<u>-23.21%</u>
Instant Tickets	<u>\$67,721,619</u>	78.8%	<u>\$65,088,999</u>	58.2%	<u>\$2,632,620</u>	4.04%
Lotto	\$2,596,331	3.0%	\$2,815,414	2.5%	-\$219,083	-7.78%
Lotto Extra	\$341,585	0.4%	\$368,182	0.3%	-\$26,597	-7.22%
Pick 3	\$4,690,135	5.5%	\$4,892,286	4.4%	-\$202,151	-4.13%
Pick 3 Sum It Up	\$90,390	0.1%	\$95,782	0.1%	-\$5,392	-5.63%
Cash Five	\$1,003,520	1.2%	\$1,050,520	0.9%	-\$47,000	-4.47%
Texas Two Step	\$1,411,162	1.6%	\$1,116,072	1.0%	\$295,090	26.44%
Mega Millions	\$2,285,066	2.7%	\$25,841,595	23.1%	-\$23,556,529	-91.16%
Megaplier	\$548,074	0.6%	\$4,595,950	4.1%	-\$4,047,876	-88.07%
Daily 4	\$1,499,570	1.7%	\$1,585,576	1.4%	-\$86,007	-5.42%
Daily 4 Sum It Up	\$86,959	0.1%	\$97,477	0.1%	-\$10,518	-10.79%
Powerball	\$2,535,486	3.0%	\$3,131,858	2.8%	-\$596,372	-19.04%
Power Play	\$336,624	0.4%	\$400,544	0.4%	-\$63,920	-15.96%
All or Nothing	\$793,190	0.9%	\$841,490	0.8%	-\$48,300	-5.74%
Total Draw Game Sales	<u>\$18,218,091</u>		<u>\$46,832,745</u>		<u>-\$28,614,655</u>	<u>-61.10%</u>

\* Totals may not sum due to rounding.

Texas Lottery Commission  
Weekly Sales Summary  
Unaudited

INSTANT TICKETS  
TOP TEN SELLING GAMES

For the Week Ending: 12/28/13

Rank	Price Point	Game	Sales (Millions)
1	\$ 10	GIFTS GALORE	\$ 3.503
2	\$ 5	MERRY MONEY	\$ 3.460
3	\$ 20	HOLIDAY MILLIONS	\$ 3.408
4	\$ 10	BIG WINNING NUMBERS	\$ 2.793
5	\$ 5	CASH CLUB	\$ 2.681
6	\$ 5	CASH EXTRAVAGANZA	\$ 2.678
7	\$ 5	TRIM THE TREE	\$ 2.294
8	\$ 10	SUPER WEEKLY GRAND	\$ 2.261
9	\$ 5	RED DIAMOND 7'S	\$ 2.138
10	\$ 20	\$500 MILLION EXTREME CASH BLAST	\$ 2.069

Texas Lottery Commission  
Prize Payout Tracking Report  
Unaudited

Through the Week Ending 12/28/13

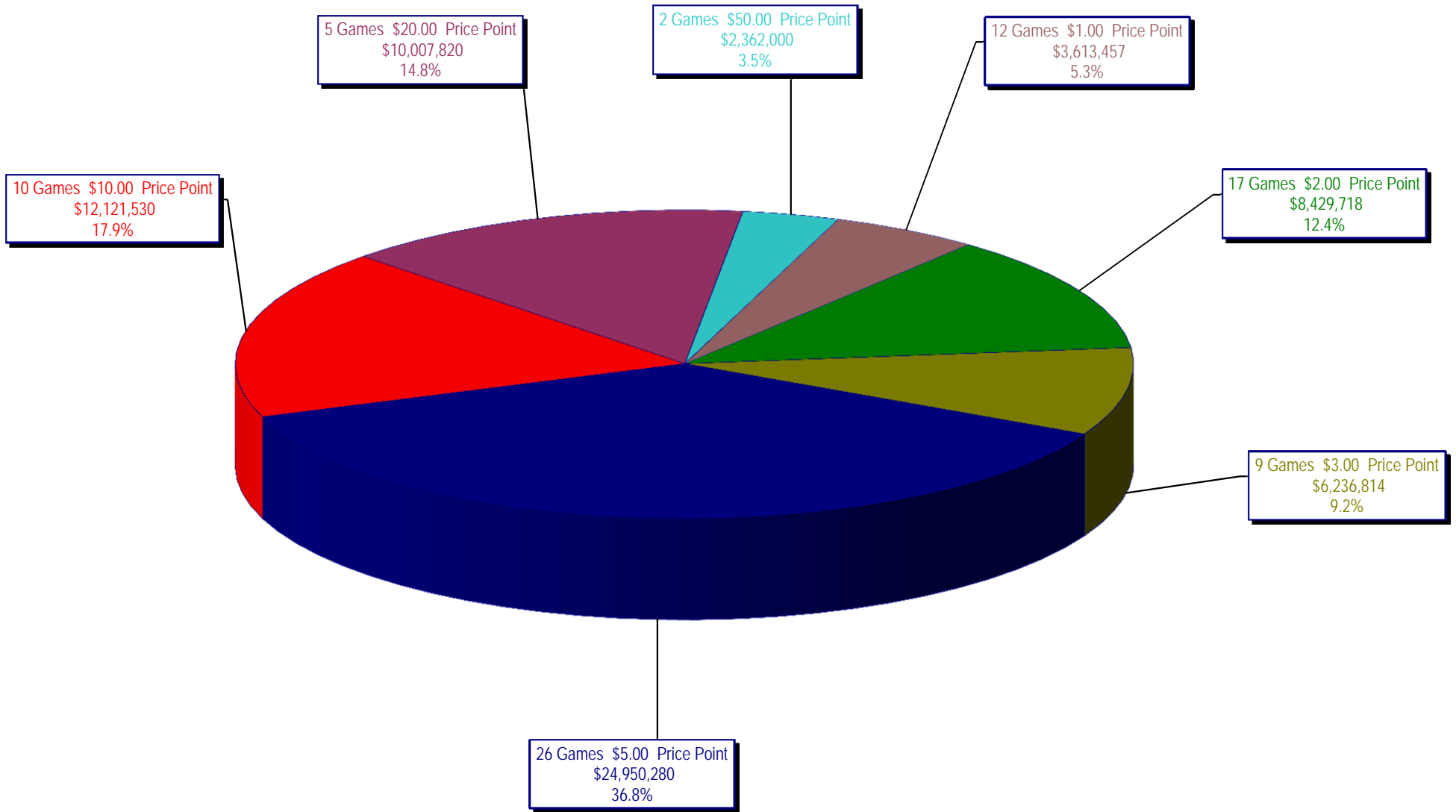
Draw Game Sales

		FY Sales Through Week Ending 12/28/2013		FY Prize Expense Through Week Ending 12/28/2013	Actual* Prize Payout	Base Payout (Prize Pool)
Lotto	\$	43,637,203	\$	22,992,358	52.69%	54.00%
Lotto Extra		5,600,981		3,023,300	53.98%	53.70%
Pick 3		81,978,928		40,053,610	48.86%	50.00%
Pick 3 Sum It Up		1,617,761		738,711	45.66%	50.00%
Cash Five		17,202,718		8,601,409	50.00%	50.00%
Texas Two Step		18,249,685		9,378,962	51.39%	50.00%
Mega Millions		87,022,471		45,017,917	51.73%	50.00%**
Megaplier		17,570,125		7,897,999	44.95%	N/A
Daily 4		26,994,202		14,111,625	52.28%	50.00%
Daily 4 Sum It Up		1,657,929		1,177,686	71.03%	50.00%
Powerball		72,659,361		35,237,238	48.50%	50.00%**
Power Play		8,548,866		3,211,324	37.56%	N/A
All or Nothing		15,157,192		8,194,260	54.06%	55.98%
<b>Totals</b>	\$	<b>397,897,421</b>	\$	<b>199,636,400</b>	<b>50.17%</b>	

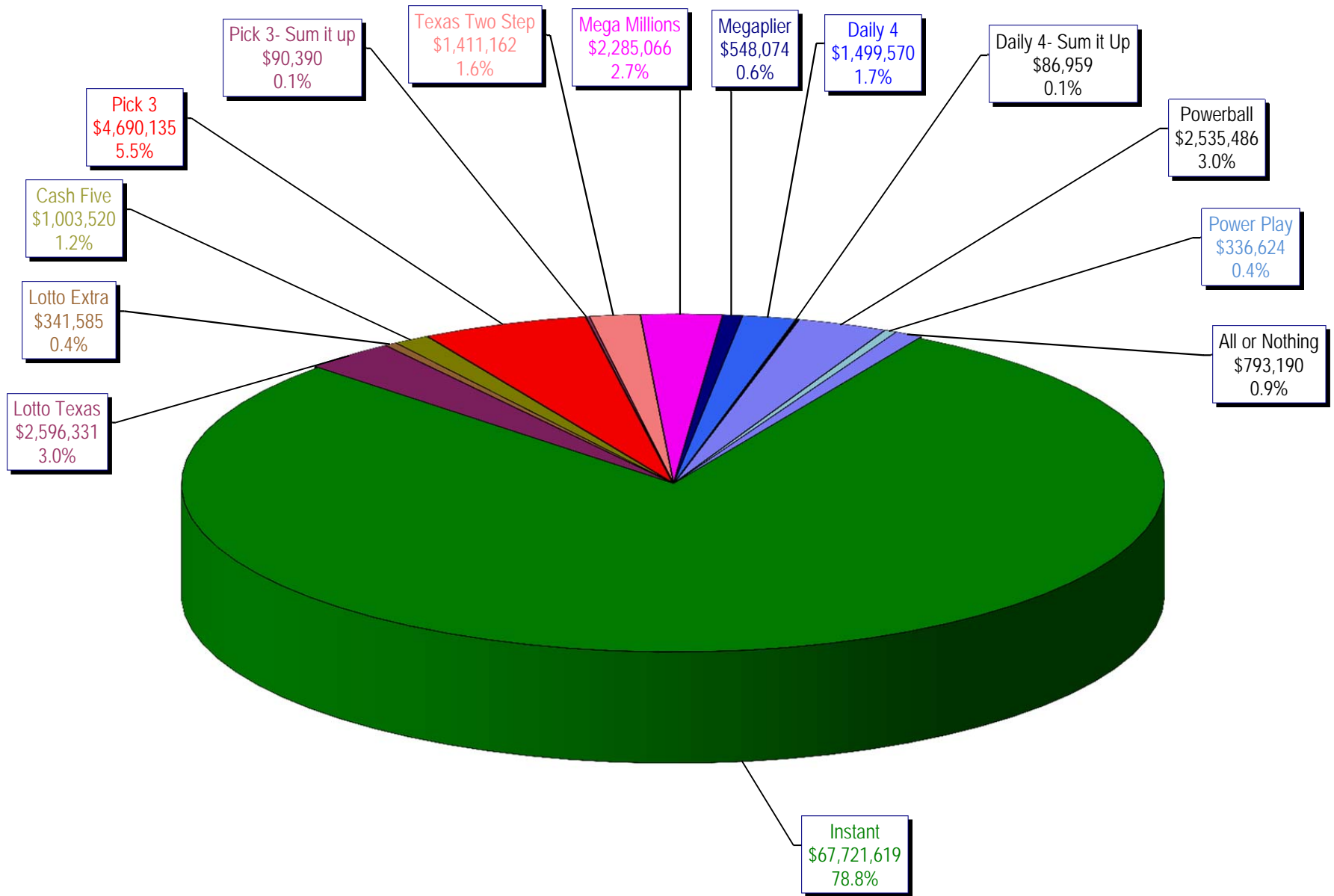
\* Before Unclaimed Prizes

\*\* Estimated; depends on # of guaranteed prizes won in Texas

Texas Lottery Commission  
Instant Ticket Sales  
For the Week Ending 12/28/13  
(Unaudited)



**Texas Lottery Commission**  
**All Game Sales**  
**For the Week Ending 12/28/13**  
**(Unaudited)**



Texas Lottery Commission - Weekly Sales Summary for FY 2014 (Unaudited)

Week Ended	Instant Games	New Games & Dates	Lotto Texas	Jackpot		Lotto Extra	Pick 3	Pick 3 Sum It Up	Cash Five	Texas Two Step	Jackpot		Mega Millions	Jackpot		Daily 4	Daily 4 Sum It Up	Powerball	Jackpot		Power Play	All or Nothing	Total	Per Cap.	
				W	S						M	TH		T	F				W	S					
9/7/2013	58,587,757	0	2,677,829	8	9	329,933	4,945,500	89,456	1,036,149	1,417,992	600	775	2,409,195	85	95	540,148	1,453,721	84,220	5,730,736	169	203	650,070	1,004,550	80,957,256	3.11
9/14/2013	57,135,931	1554 (\$1.N); 1555 (\$2.N); 1556 (\$5.N); 1557 (\$10.N) - 09/09/13	2,667,851	9.75	10.75	331,113	4,795,787	98,347	1,011,617	1,209,874	1	200	2,942,905	106	119	623,938	1,431,261	87,188	8,313,548	245	317	861,842	1,037,710	82,548,911	3.17
9/21/2013	59,018,194	0	2,793,973	11.50	12.50	346,650	4,806,820	94,670	1,008,752	908,904	225	300	3,395,333	130	145	704,431	1,513,941	92,441	11,449,786	400	40	1,072,426	973,114	88,179,435	3.38
9/28/2013	57,927,984	1558 (\$2.N); 1523 (\$5.N) - 09/23/13	2,653,111	13.25	14	329,426	4,679,375	95,344	994,775	852,100	200	225	3,688,920	160	173	744,933	1,523,950	94,444	3,041,612	50	60	392,576	921,748	77,940,297	2.99
10/5/2013	62,146,816	0	2,758,867	15	15.75	341,320	5,022,201	105,398	1,038,159	842,921	200	200	2,878,147	189	12	615,856	1,694,849	108,583	3,263,494	70	86	416,767	956,996	82,190,373	3.15
10/12/2013	60,867,582	1560 (\$1.N); 1561 (\$5.N); 1562 (\$20.N) - 10/7/13	2,820,574	16.5	17.75	348,512	4,834,261	97,324	1,011,724	926,156	225	300	1,819,995	14	22	440,456	1,607,225	100,756	4,066,595	108	133	489,491	917,894	80,348,544	3.08
10/19/2013	60,612,193	0	2,709,127	18.5	19.5	339,742	4,805,913	93,251	998,546	1,120,862	425	575	1,852,326	29	37	442,957	1,595,838	97,700	4,606,577	156	186	533,660	883,112	80,691,803	3.10
10/26/2013	59,548,277	1563 (\$2.N); 1564 (\$5.N); 1571 (\$10.N) - 10/21/13	2,318,924	5	5.25	297,319	4,702,074	92,890	991,912	830,330	200	225	2,138,960	55	65	514,665	1,635,640	102,731	4,306,600	216	40	503,870	884,014	78,868,205	3.03
11/2/2013	61,710,236	0	2,370,679	5.5	5.75	307,933	4,842,493	96,454	1,006,508	1,034,914	300	425	2,200,241	75	87	518,514	1,660,955	106,051	2,890,169	50	60	385,390	888,676	80,019,212	3.07
11/9/2013	61,668,594	1572 (\$1.N); 1565 (\$2.N); 1524 (\$3.N); 1568 (\$5.N) - 11/4/13	2,396,719	6	6.25	311,322	4,959,973	98,589	1,019,624	1,380,347	550	750	2,599,262	99	115	596,031	1,673,137	105,122	3,109,692	70	87	407,994	897,258	81,223,664	3.12
11/16/2013	60,057,025	0	2,449,602	5	5.25	316,977	4,845,025	95,215	1,003,854	1,690,863	925	1,150	2,988,792	132	149	652,956	1,660,309	102,225	3,786,446	110	130	477,532	860,276	80,987,096	3.11
11/23/2013	63,118,266	1570 (\$5.N); 1534 (\$10.N) - 11/18/13	2,325,678	5.5	5.75	307,020	4,702,460	91,204	1,007,524	839,877	200	200	3,473,057	165	181	764,548	1,628,437	98,799	2,637,760	40	50	349,338	861,068	82,205,036	3.15
11/30/2013	57,145,294	0	2,347,756	6	6.25	316,771	4,679,492	88,857	973,403	776,086	200	225	4,569,734	205	230	1,000,837	1,608,510	94,189	2,810,754	60	70	382,022	786,208	77,579,912	2.98
12/7/2013	59,883,783	1566 (\$1.N); 1569 (\$2.N); 1573 (\$5.N) - 12/2/13	2,331,362	6.5	6.75	316,270	4,952,771	96,865	1,015,927	1,020,004	275	400	5,741,567	257	297	1,198,980	1,631,318	101,968	3,155,910	81	100	414,551	814,350	82,675,625	3.17
12/14/2013	60,310,298	0	2,603,406	7	7.5	350,906	4,822,366	97,730	1,030,204	871,221	200	225	16,197,376	344	425	3,066,851	1,589,967	97,081	3,822,338	122	40	474,169	835,538	96,169,451	3.69
12/21/2013	65,088,999	1574 (\$2.N); 1553 (\$5.N); 1575 (\$5.N); 1527 (\$5.N) - 12/16/13	2,815,414	8.25	9.25	368,182	4,892,286	95,782	1,050,520	1,116,072	300	425	25,841,595	636	15	4,595,950	1,585,576	97,477	3,131,858	50	60	400,544	841,490	111,921,744	4.29
12/28/2013	67,721,619	0	2,596,331	10.25	11	341,585	4,690,135	90,390	1,003,520	1,411,162	575	750	2,285,066	22	35	548,074	1,499,570	86,959	2,535,486	74	40	336,624	793,190	85,939,710	3.30
weekly change	4.0%		-7.8%				-4.1%	-5.6%	-4.5%	26.4%			-91.2%			-88.1%	-5.4%	-10.8%			-19.0%	-16.0%	-5.7%	-23.2%	
	<b>SALES</b>		<b>SALES</b>			<b>SALES</b>	<b>SALES</b>	<b>SALES</b>	<b>SALES</b>	<b>SALES</b>			<b>SALES</b>	<b>SALES</b>	<b>SALES</b>	<b>SALES</b>	<b>SALES</b>	<b>SALES</b>	<b>SALES</b>	<b>SALES</b>	<b>SALES</b>	<b>SALES</b>	<b>SALES</b>	<b>% of Sales</b>	
Calendar Year to date	3,236,548,111		136,913,945			12,060,886	262,512,478	5,017,789	54,347,454	58,662,795			163,544,663			35,047,091	78,738,364	4,918,416	267,972,531			29,630,935	47,337,765	4,393,253,222	100.0%
Fiscal Year to date 2014	1,032,548,848		43,637,203			5,600,981	81,978,928	1,617,761	17,202,718	18,249,685			87,022,471			17,570,125	26,994,202	1,657,929	72,659,361			8,548,866	15,157,192	1,430,446,269	100.0%