



*WEEKLY SALES SUMMARY*

Unaudited

[Week Ending: 12/31/2011](#)

Texas Lottery Commission  
Fiscal Year to Date Sales Comparison  
Unaudited

Through the week ending 12/31/2011 (18 weeks)

Sales by Game	FY 2010 *	FY 2011 **	FY 2012	\$ Change		% Change	
				FY 2012 to FY 2010	FY 2012 to FY 2011 to	FY 2012 to FY 2010	FY 2012 to FY 2011
Instants	\$ 933,435,118	\$ 929,283,935	\$ 952,738,542	\$ 19,303,424	\$ 23,454,607	2.1%	2.5%
Lotto Texas	93,655,485	56,888,738	58,944,762	-34,710,723	2,056,024	-37.1%	3.6%
Pick 3	90,733,222	91,286,987	88,465,059	-2,268,164	-2,821,928	-2.5%	-3.1%
Pick 3 Sum It Up	1,812,843	1,852,537	1,798,870	-13,973	-53,668	-0.8%	-2.9%
Cash Five	22,875,597	21,558,037	21,543,469	-1,332,128	-14,568	-5.8%	-0.1%
Texas Two Step	15,362,601	16,403,896	20,490,970	5,128,369	4,087,074	33.4%	24.9%
Mega Millions	65,576,042	56,815,779	53,364,069	-12,211,973	-3,451,710	-18.6%	-6.1%
Megaplier	14,663,070	11,822,839	11,687,837	-2,975,233	-135,002	-20.3%	-1.1%
Daily 4	17,579,753	18,952,785	20,864,615	3,284,862	1,911,830	18.7%	10.1%
Daily 4 Sum It Up	1,697,229	1,490,970	1,547,822	-149,407	56,852	-8.8%	3.8%
Powerball	-	27,935,124	42,003,725	42,003,725	14,068,601	-	-
Power Play	-	6,774,828	9,207,552	9,207,552	2,432,724	-	-
<b>Total</b>	<b>\$ 1,257,390,959</b>	<b>\$ 1,241,066,455</b>	<b>\$ 1,282,657,291</b>	<b>\$ 25,266,332</b>	<b>\$ 41,590,836</b>	<b>2.0%</b>	<b>3.4%</b>

\* 2 extra days

\*\* 1 extra day

Texas Lottery Commission  
Fiscal Year to Date Cumulative Average Sales Comparison  
Unaudited

Through the week ending 12/31/2011 (18 weeks)

Sales by Game	FY 2010	FY 2011	FY 2012
Instant	\$ 7,527,703	\$ 7,555,154	\$ 7,809,332
Lotto Texas	755,286	462,510	483,154
Pick 3	731,720	742,171	725,123
Pick 3 Sum It Up	14,620	15,061	14,745
Cash Five	184,481	175,269	176,586
Texas Two Step	123,892	133,365	167,959
Mega Millions	528,839	461,917	437,410
Megaplier	118,251	96,121	95,802
Daily 4	141,772	154,088	171,021
Daily 4 Sum It Up	13,687	12,122	12,687
Powerball	-	227,115	344,293
Power Play	-	55,080	75,472
<b>Total</b>	<b>\$ <u>10,140,250</u></b>	<b>\$ <u>10,089,971</u></b>	<b>\$ <u>10,513,584</u></b>
	thru 01/02/2010 124 days	thru 01/01/2011 123 days	thru 12/31/2011 122 days

Texas Lottery Commission  
Fiscal Year Over Year Change in Sales  
Unaudited  
FY 2012 Compared to FY 2011

Week	FY 2012 Week Ending	INSTANT TICKETS				ON-LINE GAMES				TOTAL SALES			
		FY 2012	FY 2011	Difference	% change - Cumulative Sales	FY 2012	FY 2011	Difference	% change - Cumulative Sales	FY 2012	FY 2011	Difference	% change - Cumulative Sales
1	9/3/2011**	\$25,147,181	\$31,659,033	(\$6,511,852)	-20.6%	\$9,704,561	\$11,430,717	(\$1,726,156)	-15.1%	\$34,851,742	\$43,089,750	(\$8,238,008)	-19.1%
2	9/10/2011	\$50,591,068	\$48,912,598	\$1,678,470	3.4%	\$17,681,853	\$16,398,160	\$1,283,693	7.8%	\$68,272,921	\$65,310,758	\$2,962,163	4.5%
3	9/17/2011	\$49,835,063	\$48,988,241	\$846,822	1.7%	\$16,842,326	\$17,166,827	(\$324,501)	-1.9%	\$66,677,389	\$66,155,068	\$522,321	0.8%
4	9/24/2011	\$49,777,138	\$48,471,310	\$1,305,828	2.7%	\$17,504,800	\$15,623,813	\$1,880,987	12.0%	\$67,281,938	\$64,095,123	\$3,186,815	5.0%
5	10/1/2011	\$51,040,274	\$50,145,138	\$895,136	1.8%	\$18,653,100	\$16,453,939	\$2,199,161	13.4%	\$69,693,374	\$66,599,077	\$3,094,297	4.6%
6	10/8/2011	\$53,715,157	\$50,918,591	\$2,796,566	5.5%	\$17,225,680	\$16,974,963	\$250,717	1.5%	\$70,940,837	\$67,893,554	\$3,047,283	4.5%
7	10/15/2011	\$51,942,121	\$49,096,011	\$2,846,110	5.8%	\$17,854,980	\$16,661,904	\$1,193,077	7.2%	\$69,797,101	\$65,757,915	\$4,039,187	6.1%
8	10/22/2011	\$52,837,769	\$50,158,946	\$2,678,823	5.3%	\$19,558,519	\$17,374,460	\$2,184,060	12.6%	\$72,396,288	\$67,533,406	\$4,862,883	7.2%
9	10/29/2011	\$52,206,644	\$49,775,287	\$2,431,357	4.9%	\$21,504,565	\$18,402,209	\$3,102,356	16.9%	\$73,711,209	\$68,177,496	\$5,533,713	8.1%
10	11/5/2011	\$56,265,310	\$53,337,848	\$2,927,462	5.5%	\$20,870,086	\$17,321,908	\$3,548,179	20.5%	\$77,135,396	\$70,659,756	\$6,475,641	9.2%
11	11/12/2011	\$55,682,645	\$52,285,479	\$3,397,166	6.5%	\$17,862,404	\$16,388,690	\$1,473,714	9.0%	\$73,545,049	\$68,674,169	\$4,870,880	7.1%
12	11/19/2011	\$54,978,079	\$52,424,036	\$2,554,043	4.9%	\$17,879,985	\$16,138,022	\$1,741,963	10.8%	\$72,858,064	\$68,562,058	\$4,296,006	6.3%
13	11/26/2011	\$53,942,448	\$51,262,518	\$2,679,930	5.2%	\$16,877,145	\$15,967,075	\$910,070	5.7%	\$70,819,593	\$67,229,593	\$3,590,000	5.3%
14	12/3/2011	\$57,153,469	\$56,385,259	\$768,210	1.4%	\$18,298,636	\$17,553,175	\$745,461	4.2%	\$75,452,105	\$73,938,434	\$1,513,671	2.0%
15	12/10/2011	\$55,318,284	\$56,540,048	(\$1,221,764)	-2.2%	\$19,033,326	\$17,703,352	\$1,329,975	7.5%	\$74,351,610	\$74,243,400	\$108,211	0.1%
16	12/17/2011	\$58,612,629	\$57,699,991	\$912,638	1.6%	\$20,045,279	\$18,465,282	\$1,579,997	8.6%	\$78,657,908	\$76,165,273	\$2,492,635	3.3%
17	12/24/2011	\$60,628,256	\$59,800,480	\$827,776	1.4%	\$22,572,986	\$19,635,771	\$2,937,215	15.0%	\$83,201,242	\$79,436,251	\$3,764,991	4.7%
18	12/31/2011	\$63,065,007	\$61,423,121	\$1,641,886	2.7%	\$19,948,521	\$26,122,257	(\$6,173,736)	-23.6%	\$83,013,528	\$87,545,378	(\$4,531,850)	-5.2%
19	1/7/2012		\$60,976,653				\$33,521,570				\$94,498,223		
20	1/14/2012		\$50,099,433				\$17,114,637				\$67,214,070		
21	1/21/2012		\$53,143,646				\$18,091,208				\$71,234,854		
22	1/28/2012		\$54,096,128				\$17,446,156				\$71,542,284		
23	2/4/2012		\$53,433,592				\$17,388,581				\$70,822,173		
24	2/11/2012		\$60,277,094				\$18,233,038				\$78,510,132		
25	2/18/2012		\$61,536,763				\$19,387,518				\$80,924,281		
26	2/25/2012		\$59,046,203				\$20,054,404				\$79,100,607		
27	3/3/2012		\$60,537,060				\$19,478,807				\$80,015,867		
28	3/10/2012		\$59,997,361				\$19,601,658				\$79,599,019		
29	3/17/2012		\$57,835,554				\$21,189,563				\$79,025,117		
30	3/24/2012		\$57,911,940				\$29,729,651				\$87,641,591		
31	3/31/2012		\$60,407,139				\$19,519,264				\$79,926,403		
32	4/7/2012		\$60,704,285				\$19,455,317				\$80,159,602		
33	4/14/2012		\$57,663,398				\$17,866,867				\$75,530,265		
34	4/21/2012		\$56,740,216				\$17,429,326				\$74,169,542		
35	4/28/2012		\$58,042,011				\$17,104,548				\$75,146,559		
36	5/5/2012		\$66,509,159				\$17,744,833				\$84,253,992		
37	5/12/2012		\$53,769,716				\$17,783,942				\$71,553,658		
38	5/19/2012		\$53,704,228				\$18,623,882				\$72,328,110		
39	5/26/2012		\$52,310,134				\$19,115,921				\$71,426,055		
40	6/2/2012		\$53,256,725				\$18,462,603				\$71,719,328		
41	6/9/2012		\$54,293,614				\$17,213,019				\$71,506,633		
42	6/16/2012		\$52,688,230				\$17,534,413				\$70,222,643		

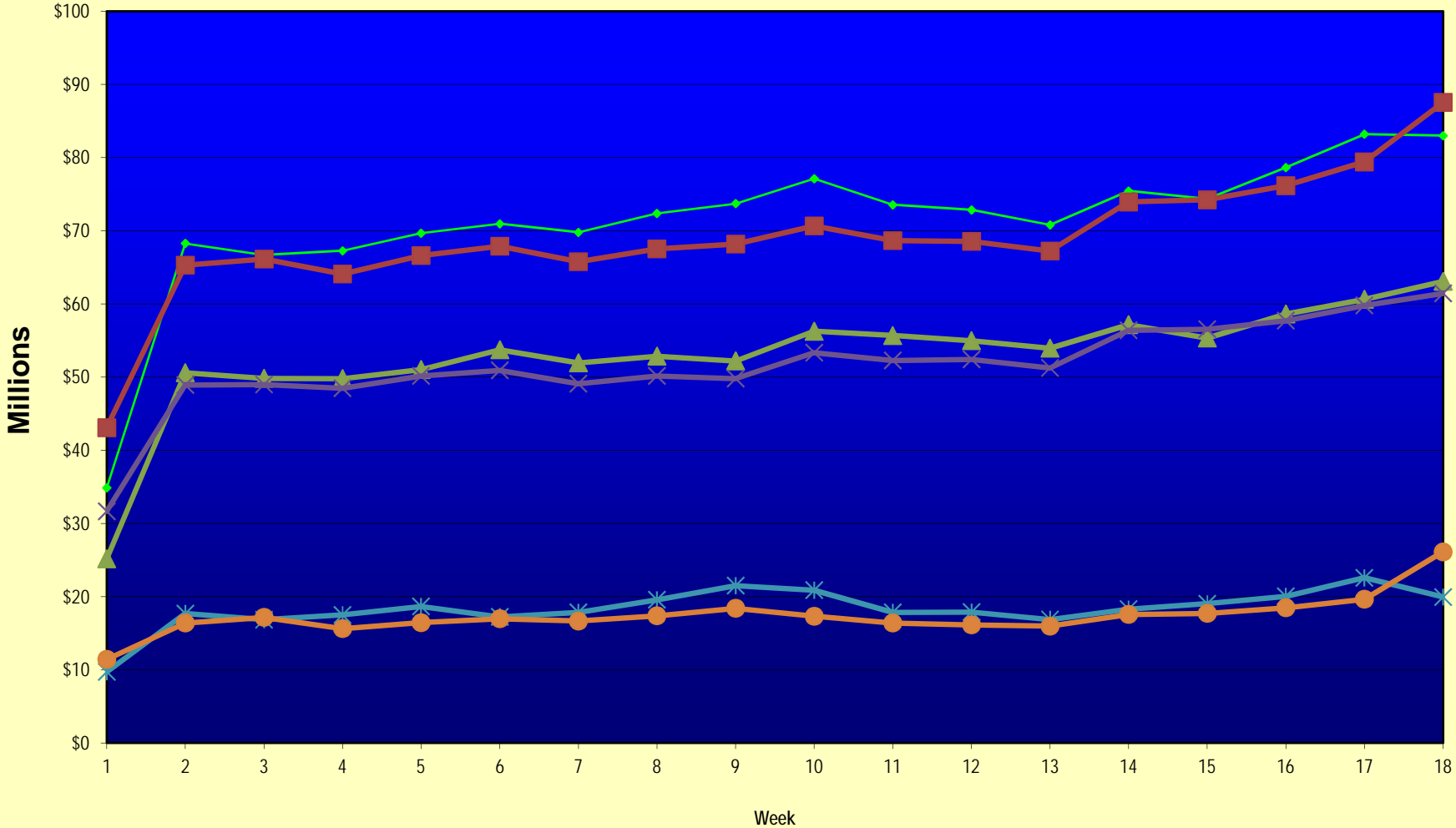
Note: Week 1 is not a full week of sales as this report is prepared on a Fiscal Year basis.

Texas Lottery Commission  
Fiscal Year Over Year Change in Sales  
Unaudited  
FY 2012 Compared to FY 2011

Week	FY 2012 Week Ending	INSTANT TICKETS				ON-LINE GAMES				TOTAL SALES			
		FY 2012	FY 2011	Difference	% change - Cumulative Sales	FY 2012	FY 2011	Difference	% change - Cumulative Sales	FY 2012	FY 2011	Difference	% change - Cumulative Sales
43	6/23/2012		\$53,174,595				\$17,086,937				\$70,261,532		
44	6/30/2012		\$53,687,509				\$18,406,785				\$72,094,294		
45	7/7/2012		\$53,054,685				\$16,211,989				\$69,266,674		
46	7/14/2012		\$51,161,290				\$16,945,733				\$68,107,023		
47	7/21/2012		\$50,807,750				\$17,362,213				\$68,169,963		
48	7/28/2012		\$51,277,179				\$18,870,764				\$70,147,943		
49	8/4/2012		\$53,320,489				\$20,922,034				\$74,242,523		
50	8/11/2012		\$50,914,022				\$19,467,124				\$70,381,146		
51	8/18/2012		\$49,905,898				\$17,419,045				\$67,324,943		
52	8/25/2012		\$49,424,242				\$16,837,474				\$66,261,716		
	8/31/2012		\$27,274,804				\$8,600,118				\$35,874,922		
Total thru Current Week		\$952,738,542	\$929,283,935	\$23,454,607	2.5%	\$329,918,749	\$311,782,520	\$18,136,229	5.8%	\$1,282,657,291	\$1,241,066,455	\$41,590,836	3.4%
Fiscal Year Total		\$952,738,542	\$2,842,266,680			\$329,918,749	\$969,003,455			\$1,282,657,291	\$3,811,270,135		

\*\* FY 2011 includes 4 days; FY 2012 includes 3 days

### Texas Lottery Commission Fiscal Year Over Year Change in Sales



◆ Total Sales 2012    
 ■ Total Sales 2011    
 ▲ Instant Tickets 2012    
 ✕ Instant Tickets 2011    
 ✱ On-Line Games 2012    
 ● On-Line Games 2011

Note: Week 1 is not a full week of sales as this report is prepared on a Fiscal Year basis.

Texas Lottery Commission  
**Instant Tickets by Price Point**  
Sales, Prize Expense, Sales Contribution and Payout Percentage With Year Over Year Changes  
Unaudited

Fiscal Year	Price Point	# of Active Games	FY Sales	% of Instant Ticket Sales	Year over Year Change in Sales	FY Prize Expense	Year over Year Change in Prize Expense	FY Sales Contribution	Year over Year Change in Contribution	Average Prize Payout %	Year over Year Change in Payout %
2011	\$1.00	26	67,185,145	7.2%		41,511,549		25,673,596		61.8%	2.8%
thru	\$2.00	25	133,356,794	14.4%		87,300,880		46,055,914		65.5%	0.5%
1/1/2011	\$3.00	17	114,212,579	12.3%		74,998,372		39,214,207		65.7%	0.1%
	\$5.00	35	300,566,380	32.3%		204,624,030		95,942,350		68.1%	0.1%
	\$7.00	6	38,426,717	4.1%		26,119,990		12,306,727		68.0%	0.0%
	\$10.00	12	121,499,760	13.1%		85,860,360		35,639,400		70.7%	1.0%
	\$20.00	5	121,483,360	13.1%		90,109,194		31,374,166		74.2%	1.4%
	\$50.00	2	32,553,200	3.5%		25,272,494		7,280,706		77.6%	4.1%
<b>Total</b>		<b>128</b>	<b>\$929,283,935</b>			<b>\$635,796,869</b>		<b>\$293,487,066</b>		<b>68.4%</b>	<b>1.0%</b>
2012	\$1.00	26	71,012,474	7.5%		43,689,149		27,323,325		61.5%	1.3%
thru	\$2.00	26	131,126,822	13.8%		85,257,017		45,869,805		65.0%	-0.8%
12/31/2011	\$3.00	15	118,224,465	12.4%		77,564,591		40,659,874		65.6%	0.0%
	\$5.00	33	299,015,385	31.4%		203,589,042		95,426,343		68.1%	0.2%
	\$7.00	4	18,053,196	1.9%		12,276,055		5,777,141		68.0%	0.0%
	\$10.00	13	153,108,010	16.1%		107,813,276		45,294,734		70.4%	-0.8%
	\$20.00	5	135,579,440	14.2%		101,145,732		34,433,708		74.6%	-0.1%
	\$50.00	1	26,618,750	2.8%		20,675,720		5,943,030		77.7%	0.1%
<b>Total</b>		<b>123</b>	<b>\$952,738,542</b>			<b>\$652,010,583</b>		<b>\$300,727,959</b>		<b>68.4%</b>	<b>-0.1%</b>
Variance	\$1.00	0	3,827,329		5.7%	2,177,600	5.2%	1,649,729	6.4%	-0.26%	
2012 to	\$2.00	1	-2,229,972		-1.7%	-2,043,863	-2.3%	-186,109	-0.4%	-0.45%	
2011	\$3.00	-2	4,011,886		3.5%	2,566,220	3.4%	1,445,666	3.7%	-0.06%	
	\$5.00	-2	-1,550,995		-0.5%	-1,034,989	-0.5%	-516,006	-0.5%	0.01%	
	\$7.00	-2	-20,373,521		-53.0%	-13,843,935	-53.0%	-6,529,586	-53.1%	0.03%	
	\$10.00	1	31,608,250		26.0%	21,952,916	25.6%	9,655,334	27.1%	-0.25%	
	\$20.00	0	14,096,080		11.6%	11,036,538	12.2%	3,059,542	9.8%	0.43%	
	\$50.00	-1	-5,934,450		-18.2%	-4,596,774	-18.2%	-1,337,676	-18.4%	0.04%	
<b>Total</b>		<b>-5</b>	<b>\$23,454,607</b>		<b>2.5%</b>	<b>\$16,213,714</b>	<b>2.6%</b>	<b>\$7,240,893</b>	<b>2.5%</b>	<b>0.02%</b>	

Notes - Instant Ticket Variances

Texas Lottery Commission  
**Instant Tickets by Price Point**  
**Sales, Prize Expense, Sales Contribution and Payout Percentage With Year Over Year Changes**  
 Unaudited

			FY 2012		FY 2011	Difference
Sales	\$1 - \$7		\$637,432,342		\$653,747,615	-\$16,315,273
Prize Exp.	\$1 - \$7		\$422,375,855		\$434,554,821	-\$12,178,967
Sales Cont.	\$1 - \$7		\$215,056,487		\$219,192,794	-\$4,136,306
Prize Exp. %	\$1 - \$7		66.3%		66.5%	-0.2%
			FY 2012		FY 2011	Difference
Sales	\$10 - \$50		\$315,306,200		\$275,536,320	\$39,769,880
Prize Exp.	\$10 - \$50		\$229,634,728		\$201,242,047	\$28,392,681
Sales Cont.	\$10 - \$50		\$85,671,472		\$74,294,273	\$11,377,199
Prize Exp. %	\$10 - \$50		72.8%		73.0%	-0.2%
			FY 2012		FY 2011	Difference
Sales	Instant		\$952,738,542		\$929,283,935	\$23,454,607
Prize Exp.	Instant		\$652,010,583		\$635,796,869	\$16,213,714
Sales Cont.	Instant		\$300,727,959		\$293,487,066	\$7,240,893
Prize Exp. %	Instant		68.4%		68.4%	0.0%

			FY 2012		FY 2011	Difference
Sales	\$1 - \$10		\$790,540,352		\$775,247,375	\$15,292,977
Prize Exp.	\$1 - \$10		\$530,189,130		\$520,415,181	\$9,773,950
Sales Cont.	\$1 - \$10		\$260,351,222		\$254,832,194	\$5,519,027
Prize Exp. %	\$1 - \$10		67.1%		67.1%	-0.1%
			FY 2012		FY 2011	Difference
Sales	\$20 - \$50		\$162,198,190		\$154,036,560	\$8,161,630
Prize Exp.	\$20 - \$50		\$121,821,453		\$115,381,688	\$6,439,765
Sales Cont.	\$20 - \$50		\$40,376,737		\$38,654,872	\$1,721,865
Prize Exp. %	\$20 - \$50		75.1%		74.9%	0.2%
			FY 2012		FY 2011	Difference
Sales	Instant		\$952,738,542		\$929,283,935	\$23,454,607
Prize Exp.	Instant		\$652,010,583		\$635,796,869	\$16,213,714
Sales Cont.	Instant		\$300,727,959		\$293,487,066	\$7,240,893
Prize Exp. %	Instant		68.4%		68.4%	0.0%



Texas Lottery Commission  
**Weekly Sales Summary**  
**& Comparison to Previous Week**  
 Unaudited

	Week Ending 12/31/2011	% of Sales	Week Ending 12/24/2011	% of Sales	\$ change	% change
	<u>THIS WEEK</u>		<u>LAST WEEK</u>			
Total Sales	<u>\$83,013,528</u>		<u>\$83,201,242</u>		<u>-\$187,714</u>	-0.23%
Instant Tickets	<u>\$63,065,007</u>	76.0%	<u>\$60,628,256</u>	72.9%	<u>\$2,436,751</u>	4.02%
Lotto	\$3,368,593	4.1%	\$3,265,301	3.9%	\$103,292	3.16%
Pick 3	\$5,211,663	6.3%	\$5,257,800	6.3%	-\$46,138	-0.88%
Pick 3 Sum It Up	\$107,395	0.1%	\$105,568	0.1%	\$1,827	1.73%
Cash Five	\$1,275,257	1.5%	\$1,269,335	1.5%	\$5,922	0.47%
Texas Two Step	\$1,200,536	1.4%	\$943,509	1.1%	\$257,027	27.24%
Mega Millions	\$4,358,985	5.3%	\$5,729,832	6.9%	-\$1,370,847	-23.92%
Megaplier	\$878,865	1.1%	\$1,095,360	1.3%	-\$216,495	-19.76%
Daily 4	\$1,244,035	1.5%	\$1,263,815	1.5%	-\$19,780	-1.57%
Daily 4 Sum It Up	\$88,079	0.1%	\$88,757	0.1%	-\$678	-0.76%
Powerball	\$1,788,226	2.2%	\$2,933,837	3.5%	-\$1,145,611	-39.05%
Power Play	\$426,888	0.5%	\$619,872	0.7%	-\$192,984	-31.13%
Total Online Sales	<u>\$19,948,521</u>		<u>\$22,572,986</u>		<u>-\$2,624,465</u>	-11.63%

\* Totals may not sum due to rounding.

Texas Lottery Commission  
Weekly Sales Summary  
Unaudited

INSTANT TICKETS  
TOP TEN SELLING GAMES

For the Week Ending : 12/31/11

Rank	Price Point	Game	Sales (Millions)
1	\$ 10	SEASON'S GREETINGS	\$ 3.693
2	\$ 5	SILVER BELLS	\$ 3.643
3	\$ 5	GROOVY CASH	\$ 3.610
4	\$ 20	\$500,000,000 FRENZY	\$ 3.592
5	\$ 5	FUNKY 5'S	\$ 2.360
6	\$ 20	\$500,000,000 BLOCKBUSTER	\$ 2.078
7	\$ 10	TEXAS LOTTERY BLACK, SERIES 3	\$ 2.026
8	\$ 3	BONUS CASHWORD	\$ 1.990
9	\$ 5	MEGA MONEY	\$ 1.916
10	\$ 20	MERRY MILLIONAIRE	\$ 1.833

Texas Lottery Commission  
Prize Payout Tracking Report  
Unaudited

Through Week Ending 12/31/11

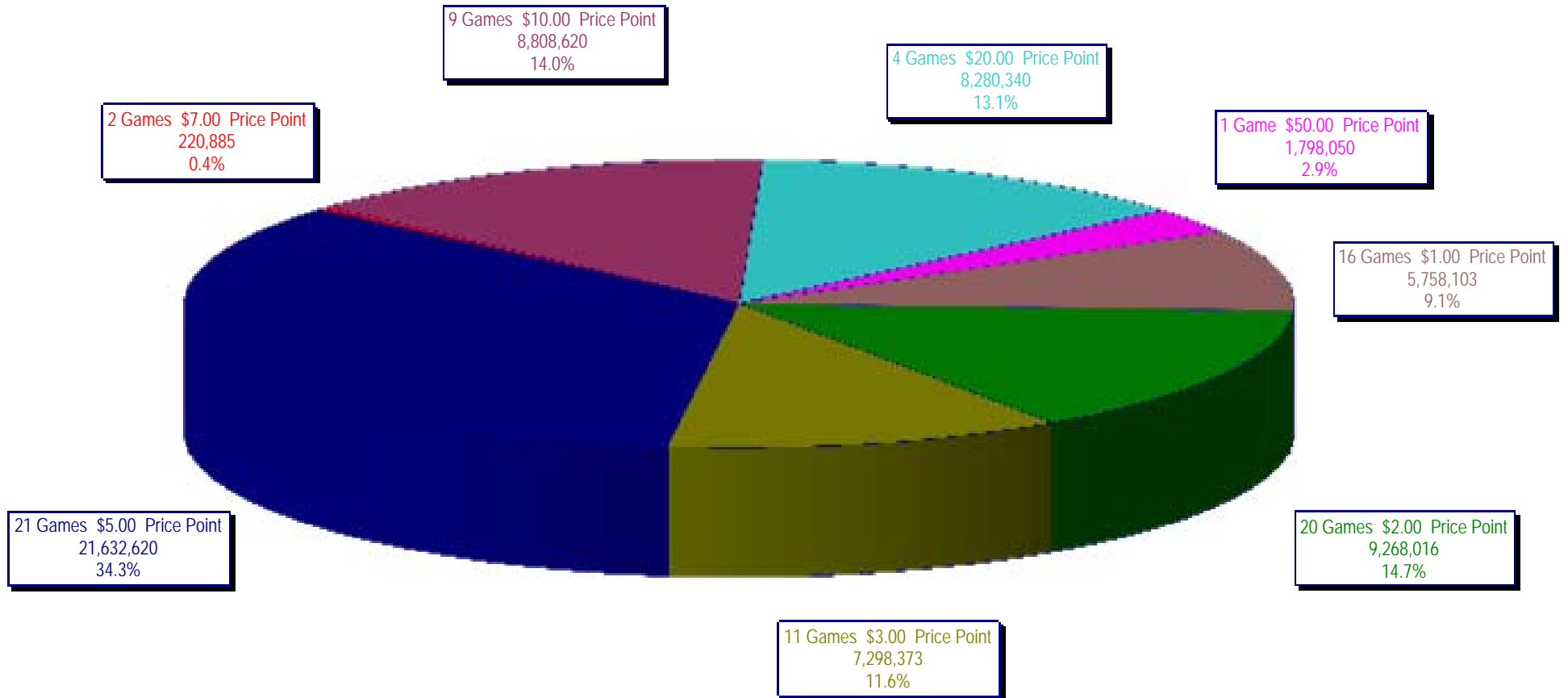
On-Line Sales

		FY Sales Through Week Ending 12/31/2011		FY Prize Expense Through Week Ending 12/31/2011	Actual* Prize Payout	Base Payout (Prize Pool)
Lotto	\$	58,944,762	\$	37,002,539	62.77%	50.00%
Pick 3		88,465,059		38,681,410	43.73%	50.00%
Pick 3 Sum It Up		1,798,870		786,823	43.74%	50.00%
Cash Five		21,543,469		11,049,684	51.29%	50.00%
Texas Two Step		20,490,970		10,280,707	50.17%	50.00%
Mega Millions		53,364,069		26,466,690	49.60%	50.00%**
Megaplier		11,687,837		6,578,155	56.28%	N/A
Daily 4		20,864,615		9,488,575	45.48%	50.00%
Daily 4 Sum It Up		1,547,822		599,766	38.75%	50.00%
Powerball		42,003,725		21,062,769	50.15%	50.00%**
Power Play		9,207,552		4,754,239	51.63%	N/A
<b>Totals</b>	\$	<b>329,918,749</b>	\$	<b>166,751,357</b>	<b>50.54%</b>	

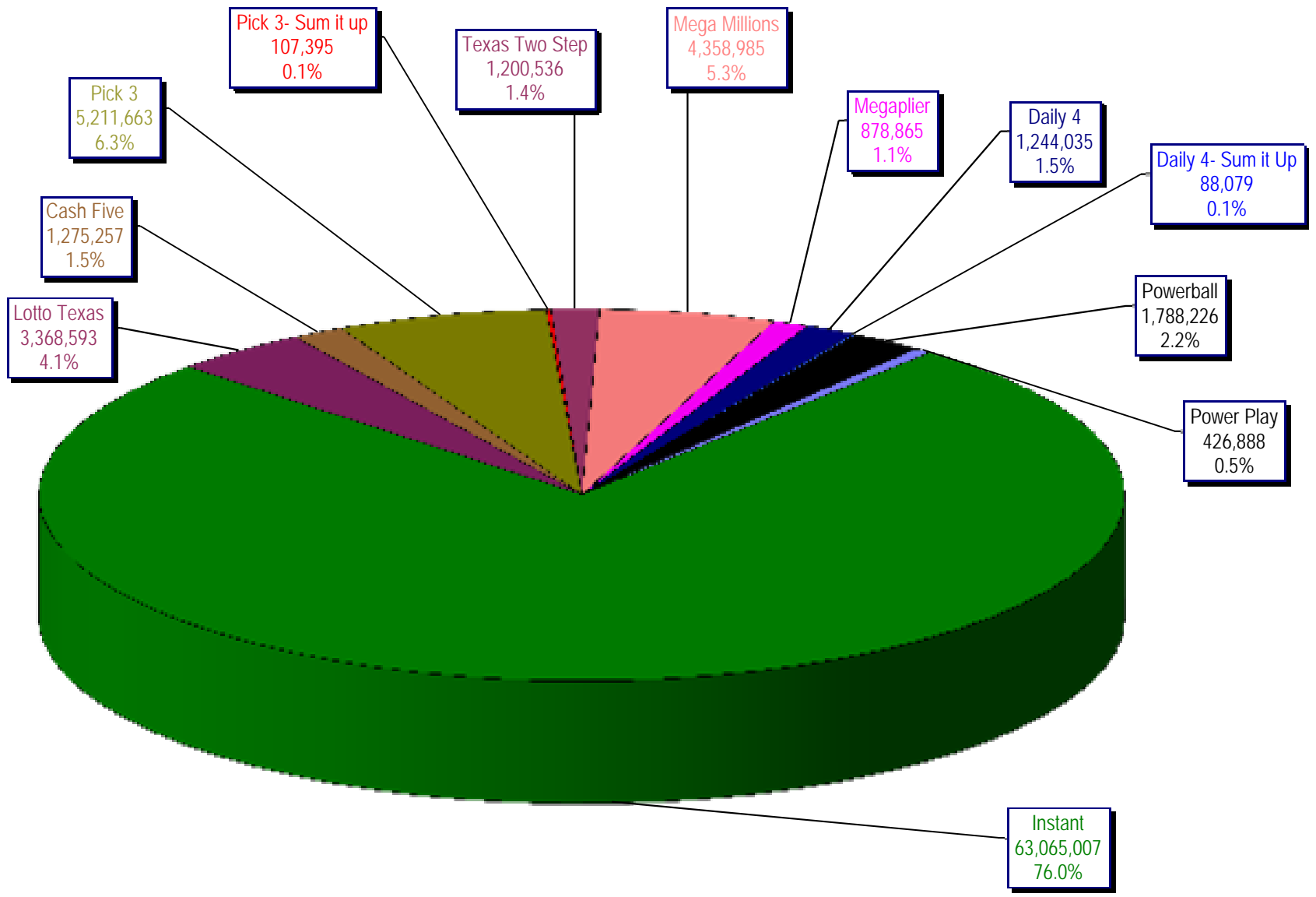
\* Before Unclaimed Prizes

\*\* Estimated; depends on # of guaranteed prizes won in Texas

Texas Lottery Commission  
Instant Ticket Sales  
For the Week Ending 12/31/11  
(Unaudited)



**Texas Lottery Commission  
All Game Sales  
For the Week Ending 12/31/11  
(Unaudited)**



Texas Lottery Commission - Weekly Sales Summary for FY 2012 (Unaudited)

Week Ended	Instant Games	New Games & Dates	Lotto Texas		Jackpot		Pick 3	Pick 3 Sum It Up	Cash Five	Texas Two Step	Jackpot		Mega Millions	Jackpot		Megaplier	Daily 4	Daily 4 Sum It Up	Powerball	Jackpot		Power Play	Total	Per Cap.
			W	S	W	S					M	TH		T	F					W	S			
9/3/2011	52,421,985	1340 (\$1,N); 1310 (\$2, N) - 08/29/11	3,710,974	23	24	5,228,940	100,997	1,239,134	989,988	225	300	2,248,664	21	29	539,246	1,221,178	93,318	2,401,555	75	91	530,686	70,726,664	2.81	
9/10/2011	50,591,068	1360 (\$3, N) - 09/05/11	3,329,350	25	4	5,103,026	99,259	1,198,563	935,771	450	200	2,387,766	37	44	557,225	1,180,505	88,443	2,295,315	107	20	506,631	68,272,921	2.71	
9/17/2011	49,835,063	0	3,031,798	5	6	4,953,079	100,990	1,210,562	961,592	225	300	2,801,526	54	65	626,459	1,125,230	83,532	1,560,522	25	20	387,037	66,677,389	2.64	
9/24/2011	49,777,138	1362(\$1, N); 1363(\$5,N); 1364(\$5,N) - 09/19/11	3,083,973	7	8	4,819,453	97,999	1,200,444	1,283,472	450	600	3,206,022	75	86	692,909	1,092,294	82,198	1,561,655	25	30	384,383	67,281,938	2.67	
10/1/2011	51,040,274	1365(\$2,N) - 09/26/11	3,196,730	9	10	4,846,896	97,026	1,215,715	1,146,613	800	200	4,033,330	96	113	830,660	1,096,271	83,993	1,693,809	37	47	412,058	69,693,374	2.76	
10/8/2011	53,715,157	1366(\$1,N) - 10/03/11	3,231,892	11	12	5,064,771	102,919	1,252,733	1,004,251	225	300	2,176,684	12	14	527,777	1,188,636	92,825	2,103,034	58	71	480,159	70,940,837	2.81	
10/15/2011	51,942,121	1367 (\$7, N) - 10/10/11	3,230,925	13	14	4,776,985	99,008	1,214,385	1,337,436	450	625	2,260,036	22	30	542,787	1,132,415	84,772	2,613,215	86	105	563,017	69,797,101	2.77	
10/22/2011	52,837,769	1369 (\$1, N); 1370 (\$5, N) - 10/17/11	3,250,317	15	16	4,784,201	98,306	1,202,768	1,887,302	825	1,050	2,386,255	39	48	561,705	1,130,353	83,722	3,477,867	124	148	695,724	72,396,288	2.87	
10/29/2011	52,206,644	1371 (\$2, N) - 10/24/11	3,302,201	17	18	4,685,786	95,887	1,186,987	2,055,399	1,300	1,550	2,592,752	57	67	596,631	1,107,441	82,921	4,895,300	173	203	903,261	73,711,209	2.92	
11/5/2011	56,265,310	1373 (\$10, N) - 10/31/11	3,570,825	19	20	5,165,835	105,793	1,240,514	910,036	200	200	2,497,308	78	12	583,481	1,222,706	92,619	4,617,172	245	20	863,799	77,135,396	3.06	
11/12/2011	55,682,645	1375 (\$3, N); 1374 (\$1, N) - 11/07/11	3,673,137	21	22	5,298,645	109,575	1,268,630	961,349	225	200	2,362,698	15	22	552,133	1,235,272	92,025	1,861,697	25	35	447,243	73,545,049	2.92	
11/19/2011	54,978,079	1376(\$2, N); 1377 (\$5, N) - 11/14/11	3,575,231	23	24	5,216,095	106,956	1,246,366	1,059,355	225	325	2,300,050	30	40	550,825	1,224,365	89,978	2,033,222	46	60	477,542	72,858,064	2.89	
11/26/2011	53,942,448	1372 (\$5, N) - 11/21/11	3,499,908	25	26	4,943,420	100,352	1,179,174	998,175	500	200	2,377,399	47	55	555,760	1,215,090	90,416	1,527,546	20	25	389,905	70,819,593	2.81	
12/3/2011	57,153,469	0	3,744,456	27	28	5,267,602	108,544	1,264,649	938,225	225	200	2,830,996	64	75	636,924	1,278,857	95,379	1,708,763	31	40	424,242	75,452,105	2.99	
12/10/2011	55,318,284	1378 (\$1, N); 1322 (\$5, N) - 12/5/11; 1389 (\$1, N) - 12/6/11	3,666,072	29	30	5,168,509	106,265	1,243,957	1,030,979	225	325	3,462,326	87	100	736,281	1,235,834	89,131	1,850,570	52	67	443,403	74,351,610	2.95	
12/17/2011	58,612,629	1383 (\$3,N) - 12/12/11	2,963,151	4	5	5,096,413	103,606	1,257,263	1,339,991	475	650	4,412,520	116	135	882,759	1,240,640	89,229	2,163,468	78	91	496,239	78,657,908	3.12	
12/24/2011	60,628,256	1379 (\$1, N); 1317 (\$2, N); 1380 (\$5, N) - 12/19/11	3,265,301	6	7	5,257,800	105,568	1,269,335	943,509	200	225	5,729,832	152	173	1,095,360	1,263,815	88,757	2,933,837	104	125	619,872	83,201,242	3.30	
12/31/2011	63,065,007	0	3,368,593	8	9	5,211,663	107,395	1,275,257	1,200,536	325	450	4,358,985	206	12	878,865	1,244,035	88,079	1,788,226	20	25	426,888	83,013,528	3.29	
weekly change	4.0%		3.2%			-0.9%	1.7%	0.5%	27.2%			-23.9%			-19.8%	-1.6%	-0.8%	-39.0%			-31.1%		-0.2%	
	<b>SALES</b>		<b>SALES</b>			<b>SALES</b>	<b>SALES</b>	<b>SALES</b>	<b>SALES</b>			<b>SALES</b>	<b>SALES</b>	<b>SALES</b>	<b>SALES</b>	<b>SALES</b>	<b>SALES</b>	<b>SALES</b>	<b>SALES</b>	<b>SALES</b>	<b>SALES</b>	<b>SALES</b>	<b>% of Sales</b>	
Startup to date	42,828,096,744		10,966,950,821			4,215,825,380	25,102,202	2,342,452,130	598,325,437			1,538,795,794			351,823,008	221,867,303	24,517,262	198,395,609			45,470,897	63,565,756,558	100.0%	
Calendar Year to date	2,873,200,077		175,504,295			272,193,695	123,957	64,876,808	55,092,721			173,572,906			37,169,238	60,719,962	4,501,456	115,454,117			25,654,627	3,858,063,858	100.0%	
Fiscal Year to date 2012	952,738,542		58,944,762			88,465,059	1,798,870	21,543,469	20,490,970			53,364,069			11,687,837	20,864,615	1,547,822	42,003,725			9,207,552	1,282,657,291	100.0%	