



SALES SUMMARY

Unaudited

Year Ending: 8/31/2015

Prepared: 9/3/2015

Texas Lottery Commission
Fiscal Year to Date Sales Comparison
Unaudited

Fiscal Year Totals (through 08/31/2015)

Sales by Game	FY 2013	FY 2014	FY 2015	\$ Change		% Change	
				FY 2015 to FY 2013	FY 2015 to FY 2014	FY 2015 to FY 2013	FY 2015 to FY 2014
Scratch Tickets	\$ 3,222,593,714	\$ 3,280,229,170	\$ 3,481,361,812	\$ 258,768,098	\$ 201,132,642	8.0%	6.1%
Lotto Texas	146,550,658	135,608,856	123,373,545	-23,177,113	-12,235,311	-15.8%	-9.0%
Lotto Extra	6,459,905	18,732,210	19,609,622	13,149,717	877,412	203.6%	4.7%
Pick 3	268,973,152	254,397,783	251,642,139	-17,331,013	-2,755,644	-6.4%	-1.1%
Pick 3 Sum It Up	5,059,234	5,039,053	5,197,226	137,992	158,174	2.7%	3.1%
Cash Five	56,137,265	52,415,222	50,245,841	-5,891,424	-2,169,381	-10.5%	-4.1%
Texas Two Step	59,719,618	57,252,954	55,323,984	-4,395,634	-1,928,970	-7.4%	-3.4%
Mega Millions	111,760,879	183,854,415	148,665,372	36,904,493	-35,189,043	33.0%	-19.1%
Megaplier	25,680,900	40,264,558	35,287,608	9,606,708	-4,976,950	37.4%	-12.4%
Daily 4	74,995,090	83,340,521	86,615,569	11,620,480	3,275,049	15.5%	3.9%
Daily 4 Sum It Up	4,813,982	5,143,869	4,960,023	146,041	-183,846	3.0%	-3.6%
Powerball	298,791,599	197,713,851	201,231,022	-97,560,577	3,517,171	-32.7%	1.8%
Power Play	31,189,726	24,351,993	25,782,308	-5,407,418	1,430,315	-17.3%	5.9%
All or Nothing	63,560,735	46,252,609	37,748,044	-25,812,691	-8,504,565	-40.6%	-18.4%
Monopoly	-	-	2,656,310	2,656,310	2,656,310	-	-
Total	\$ <u>4,376,286,456</u>	\$ <u>4,384,597,063</u>	\$ <u>4,529,700,425</u>	\$ <u>153,413,969</u>	\$ <u>145,103,362</u>	3.5%	3.3%

¹ Monopoly sales were suspended after draw on 12/12/14

Texas Lottery Commission
Fiscal Year to Date Cumulative Average Sales Comparison
Unaudited

Through the Year Ending 8/31/2015

Sales by Game	FY 2013	FY 2014	FY 2015
Scratch Tickets	\$ 8,829,024	\$ 8,986,929	\$ 9,537,978
Lotto Texas	401,509	371,531	338,010
Lotto Extra	*** 46,142	51,321	53,725
Pick 3	736,913	696,980	689,431
Pick 3 Sum It Up	13,861	13,806	14,239
Cash Five	153,801	143,603	137,660
Texas Two Step	163,615	156,857	151,573
Mega Millions	306,194	503,711	407,302
Megaplier	70,359	110,314	96,678
Daily 4	205,466	228,330	237,303
Daily 4 Sum It Up	13,189	14,093	13,589
Powerball	818,607	541,682	551,318
Power Play	85,451	66,718	70,636
All or Nothing	* 231,130	126,719	103,419
Monopoly	-	- **	48,297
Total	\$ <u>12,075,261</u>	\$ <u>12,012,595</u>	\$ <u>12,451,157</u>

	thru 8/31/2013	thru 8/31/2014	thru 8/31/2015
	365 days	365 days	365 days
*	275 days		** 55 days
***	140 days		

Texas Lottery Commission
Fiscal Year Over Year Change in Sales
Unaudited
FY 2015 Compared to FY 2014

			SCRATCH TICKETS				DRAW GAMES				TOTAL SALES			
FY 2015			FY 2015	FY 2014	Difference	% change - Cumulative Sales	FY 2015	FY 2014	Difference	% change - Cumulative Sales	FY 2015	FY 2014	Difference	% change - Cumulative Sales
Week	Week Ending													
1	9/6/2014 *		\$54,911,801	\$58,587,757	(\$3,675,956)	-6.3%	\$17,482,488	\$22,369,499	(\$4,887,011)	-21.8%	\$72,394,289	\$80,957,256	(\$8,562,967)	-10.6%
2	9/13/2014		\$61,436,533	\$57,135,931	\$4,300,602	7.5%	\$19,097,081	\$25,412,980	(\$6,315,899)	-24.9%	\$80,533,614	\$82,548,911	(\$2,015,297)	-2.4%
3	9/20/2014		\$60,959,234	\$59,018,194	\$1,941,040	3.3%	\$20,567,894	\$29,161,241	(\$8,593,347)	-29.5%	\$81,527,128	\$88,179,435	(\$6,652,307)	-7.5%
4	9/27/2014		\$59,710,056	\$57,927,984	\$1,782,072	3.1%	\$19,920,828	\$20,012,313	(\$91,485)	-0.5%	\$79,630,884	\$77,940,297	\$1,690,588	2.2%
5	10/4/2014		\$62,119,854	\$62,146,816	(\$26,962)	0.0%	\$18,531,421	\$20,043,557	(\$1,512,136)	-7.5%	\$80,651,275	\$82,190,373	(\$1,539,098)	-1.9%
6	10/11/2014		\$61,253,665	\$60,867,582	\$386,083	0.6%	\$18,985,332	\$19,480,962	(\$495,631)	-2.5%	\$80,238,997	\$80,348,544	(\$109,548)	-0.1%
7	10/18/2014		\$60,230,048	\$60,612,193	(\$382,145)	-0.6%	\$19,538,402	\$20,079,610	(\$541,209)	-2.7%	\$79,768,450	\$80,691,803	(\$923,354)	-1.1%
8	10/25/2014		\$62,384,112	\$59,548,277	\$2,835,835	4.8%	\$21,475,643	\$19,319,928	\$2,155,715	11.2%	\$83,859,755	\$78,868,205	\$4,991,550	6.3%
9	11/1/2014		\$63,404,713	\$61,710,236	\$1,694,477	2.7%	\$23,568,817	\$18,308,976	\$5,259,842	28.7%	\$86,973,530	\$80,019,212	\$6,954,319	8.7%
10	11/8/2014		\$65,486,719	\$61,668,594	\$3,818,125	6.2%	\$23,749,032	\$19,555,070	\$4,193,963	21.4%	\$89,235,751	\$81,223,664	\$8,012,088	9.9%
11	11/15/2014		\$61,745,521	\$60,057,025	\$1,688,496	2.8%	\$17,449,604	\$20,930,071	(\$3,480,468)	-16.6%	\$79,195,125	\$80,987,096	(\$1,791,972)	-2.2%
12	11/22/2014		\$66,353,583	\$63,118,266	\$3,235,317	5.1%	\$17,108,084	\$19,086,770	(\$1,978,687)	-10.4%	\$83,461,667	\$82,205,036	\$1,256,631	1.5%
13	11/29/2014		\$60,471,184	\$57,145,294	\$3,325,890	5.8%	\$17,303,129	\$20,434,618	(\$3,131,489)	-15.3%	\$77,774,313	\$77,579,912	\$194,401	0.3%
14	12/6/2014		\$66,648,696	\$59,883,783	\$6,764,913	11.3%	\$18,862,425	\$22,791,842	(\$3,929,417)	-17.2%	\$85,511,121	\$82,675,625	\$2,835,496	3.4%
15	12/13/2014		\$65,708,630	\$60,310,298	\$5,398,332	9.0%	\$18,649,598	\$35,859,153	(\$17,209,555)	-48.0%	\$84,358,228	\$96,169,451	(\$11,811,223)	-12.3%
16	12/20/2014		\$68,551,298	\$65,088,999	\$3,462,299	5.3%	\$19,051,100	\$46,832,745	(\$27,781,646)	-59.3%	\$87,602,398	\$111,921,744	(\$24,319,347)	-21.7%
17	12/27/2014		\$73,858,618	\$67,721,619	\$6,136,999	9.1%	\$20,006,357	\$18,218,091	\$1,788,266	9.8%	\$93,864,975	\$85,939,710	\$7,925,265	9.2%
18	1/3/2015		\$67,733,268	\$67,162,991	\$570,277	0.8%	\$21,355,167	\$19,140,745	\$2,214,422	11.6%	\$89,088,435	\$86,303,736	\$2,784,699	3.2%
19	1/10/2015		\$64,745,641	\$65,049,914	(\$304,273)	-0.5%	\$22,265,347	\$17,954,333	\$4,311,015	24.0%	\$87,010,988	\$83,004,247	\$4,006,742	4.8%
20	1/17/2015		\$64,015,166	\$62,731,830	\$1,283,336	2.0%	\$23,694,617	\$18,900,213	\$4,794,405	25.4%	\$87,709,783	\$81,632,043	\$6,077,741	7.4%
21	1/24/2015		\$62,569,156	\$59,085,886	\$3,483,270	5.9%	\$19,765,442	\$19,558,830	\$206,612	1.1%	\$82,334,598	\$78,644,716	\$3,689,882	4.7%
22	1/31/2015		\$68,001,588	\$64,099,096	\$3,902,492	6.1%	\$22,877,000	\$20,764,006	\$2,112,995	10.2%	\$90,878,588	\$84,863,102	\$6,015,487	7.1%
23	2/7/2015		\$75,677,650	\$67,717,353	\$7,960,297	11.8%	\$31,662,209	\$22,433,672	\$9,228,537	41.1%	\$107,339,859	\$90,151,025	\$17,188,834	19.1%
24	2/14/2015		\$75,368,712	\$69,949,998	\$5,418,714	7.7%	\$46,091,747	\$25,572,367	\$20,519,380	80.2%	\$121,460,459	\$95,522,365	\$25,938,094	27.2%
25	2/21/2015		\$74,833,076	\$72,422,148	\$2,410,928	3.3%	\$19,865,172	\$31,832,665	(\$11,967,493)	-37.6%	\$94,698,248	\$104,254,813	(\$9,556,565)	-9.2%
26	2/28/2015		\$69,918,013	\$72,883,830	(\$2,965,817)	-4.1%	\$19,735,352	\$21,827,140	(\$2,091,789)	-9.6%	\$89,653,365	\$94,710,970	(\$5,057,606)	-5.3%
27	3/7/2015		\$74,848,961	\$73,726,744	\$1,122,217	1.5%	\$19,946,068	\$22,528,352	(\$2,582,284)	-11.5%	\$94,795,029	\$96,255,096	(\$1,460,067)	-1.5%
28	3/14/2015		\$70,079,409	\$71,026,808	(\$947,399)	-1.3%	\$20,044,562	\$25,171,358	(\$5,126,797)	-20.4%	\$90,123,971	\$96,198,166	(\$6,074,196)	-6.3%
29	3/21/2015		\$70,368,686	\$69,174,125	\$1,194,561	1.7%	\$18,480,795	\$25,837,564	(\$7,356,769)	-28.5%	\$88,849,481	\$95,011,689	(\$6,162,208)	-6.5%
30	3/28/2015		\$70,280,600	\$66,886,917	\$3,393,683	5.1%	\$17,595,205	\$18,604,870	(\$1,009,665)	-5.4%	\$87,875,805	\$85,491,787	\$2,384,018	2.8%
31	4/4/2015		\$74,369,952	\$71,218,020	\$3,151,932	4.4%	\$18,378,917	\$19,883,667	(\$1,504,750)	-7.6%	\$92,748,869	\$91,101,687	\$1,647,182	1.8%
32	4/11/2015		\$67,416,817	\$65,970,648	\$1,446,169	2.2%	\$18,594,844	\$18,875,485	(\$280,641)	-1.5%	\$86,011,661	\$84,846,133	\$1,165,529	1.4%
33	4/18/2015		\$68,393,316	\$64,922,280	\$3,471,036	5.3%	\$18,104,632	\$19,723,048	(\$1,618,416)	-8.2%	\$86,497,948	\$84,645,328	\$1,852,620	2.2%
34	4/25/2015		\$70,078,182	\$60,578,829	\$9,499,353	15.7%	\$17,957,150	\$18,978,148	(\$1,020,998)	-5.4%	\$88,035,332	\$79,556,977	\$8,478,355	10.7%
35	5/2/2015		\$71,744,718	\$64,244,545	\$7,500,173	11.7%	\$18,961,113	\$19,029,632	(\$68,519)	-0.4%	\$90,705,831	\$83,274,177	\$7,431,655	8.9%
36	5/9/2015		\$73,415,978	\$65,679,029	\$7,736,949	11.8%	\$20,210,341	\$19,350,478	\$859,863	4.4%	\$93,626,319	\$85,029,507	\$8,596,812	10.1%
37	5/16/2015		\$72,152,109	\$63,627,971	\$8,524,138	13.4%	\$20,362,774	\$19,865,609	\$497,165	2.5%	\$92,514,883	\$83,493,580	\$9,021,303	10.8%
38	5/23/2015		\$70,399,950	\$61,902,451	\$8,497,499	13.7%	\$21,246,276	\$19,892,846	\$1,353,430	6.8%	\$91,646,226	\$81,795,297	\$9,850,929	12.0%
39	5/30/2015		\$68,547,554	\$61,264,953	\$7,282,601	11.9%	\$22,227,946	\$20,014,636	\$2,213,310	11.1%	\$90,775,500	\$81,279,589	\$9,495,911	11.7%
40	6/6/2015		\$71,254,006	\$64,019,948	\$7,234,058	11.3%	\$20,739,703	\$21,782,886	(\$1,043,184)	-4.8%	\$91,993,709	\$85,802,834	\$6,190,875	7.2%
41	6/13/2015		\$65,878,375	\$59,742,598	\$6,135,777	10.3%	\$17,216,403	\$19,736,748	(\$2,520,345)	-12.8%	\$83,094,778	\$79,479,346	\$3,615,432	4.5%
42	6/20/2015		\$66,658,742	\$59,010,863	\$7,647,879	13.0%	\$17,340,531	\$17,095,336	\$245,195	1.4%	\$83,999,273	\$76,106,199	\$7,893,074	10.4%

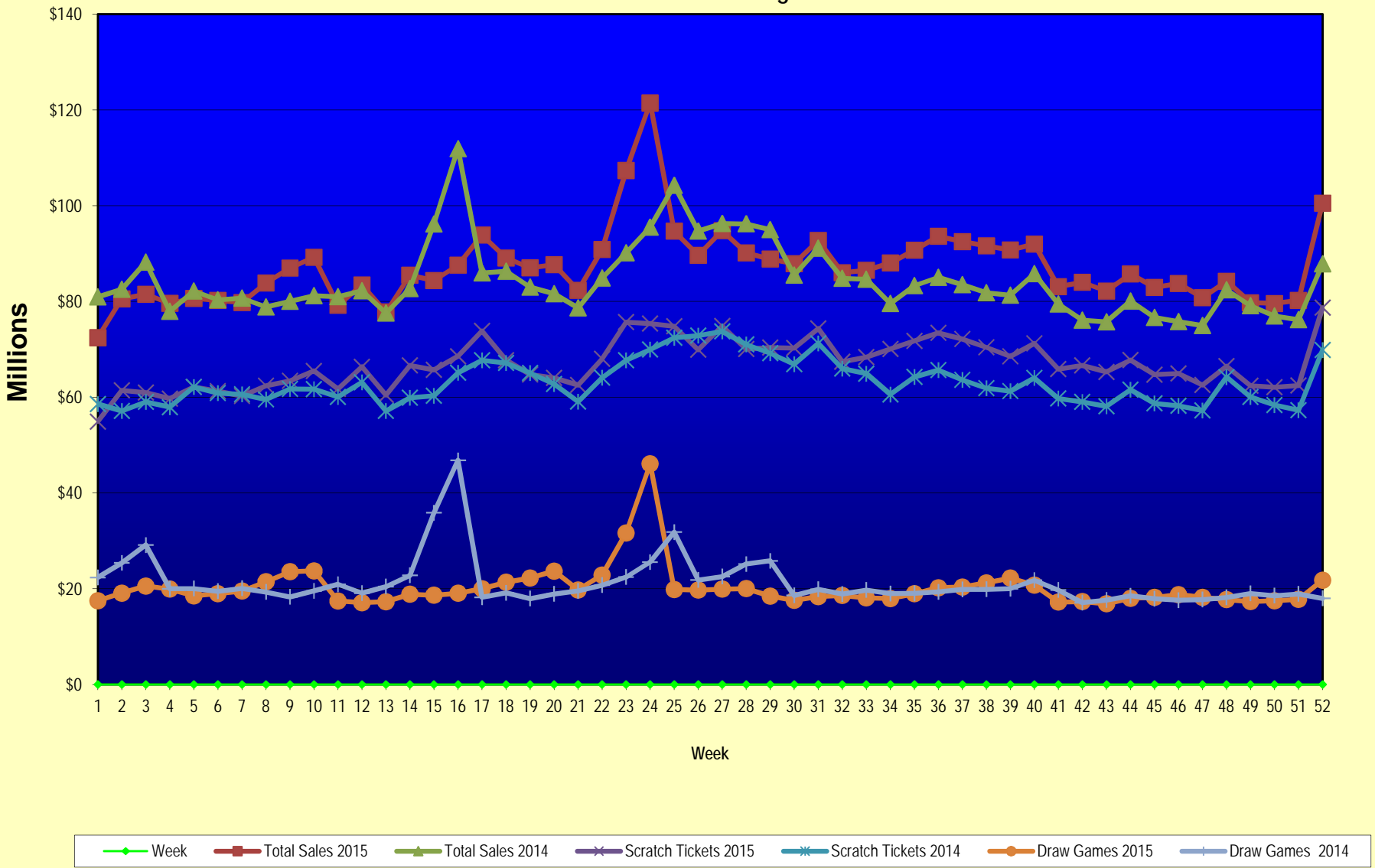
Texas Lottery Commission
Fiscal Year Over Year Change in Sales
Unaudited
FY 2015 Compared to FY 2014

			SCRATCH TICKETS				DRAW GAMES				TOTAL SALES			
FY 2015			FY 2015	FY 2014	Difference	% change - Cumulative Sales	FY 2015	FY 2014	Difference	% change - Cumulative Sales	FY 2015	FY 2014	Difference	% change - Cumulative Sales
Week	Week	Ending												
43	6/27/2015		\$65,282,276	\$58,102,191	\$7,180,085	12.4%	\$16,873,368	\$17,635,736	(\$762,368)	-4.3%	\$82,155,644	\$75,737,927	\$6,417,717	8.5%
44	7/4/2015		\$67,757,752	\$61,566,071	\$6,191,681	10.1%	\$18,007,540	\$18,521,529	(\$513,990)	-2.8%	\$85,765,292	\$80,087,600	\$5,677,692	7.1%
45	7/11/2015		\$64,718,254	\$58,729,674	\$5,988,580	10.2%	\$18,203,985	\$17,913,387	\$290,599	1.6%	\$82,922,239	\$76,643,061	\$6,279,179	8.2%
46	7/18/2015		\$64,957,977	\$58,202,035	\$6,755,942	11.6%	\$18,792,785	\$17,602,032	\$1,190,754	6.8%	\$83,750,762	\$75,804,067	\$7,946,696	10.5%
47	7/25/2015		\$62,541,241	\$57,220,932	\$5,320,309	9.3%	\$18,229,965	\$17,736,889	\$493,076	2.8%	\$80,771,206	\$74,957,821	\$5,813,385	7.8%
48	8/1/2015		\$66,468,460	\$64,207,294	\$2,261,166	3.5%	\$17,742,489	\$18,208,743	(\$466,255)	-2.6%	\$84,210,949	\$82,416,037	\$1,794,912	2.2%
49	8/8/2015		\$62,412,598	\$60,066,007	\$2,346,591	3.9%	\$17,331,374	\$19,022,945	(\$1,691,571)	-8.9%	\$79,743,972	\$79,088,952	\$655,020	0.8%
50	8/15/2015		\$62,089,389	\$58,374,809	\$3,714,580	6.4%	\$17,501,599	\$18,567,246	(\$1,065,647)	-5.7%	\$79,590,988	\$76,942,055	\$2,648,934	3.4%
51	8/22/2015		\$62,437,148	\$57,277,475	\$5,159,673	9.0%	\$17,779,458	\$18,916,460	(\$1,137,003)	-6.0%	\$80,216,606	\$76,193,935	\$4,022,671	5.3%
52	8/29/2015		\$61,403,206	\$61,884,256	(\$481,050)	-0.8%	\$18,529,560	\$17,283,925	\$1,245,635	7.2%	\$79,932,766	\$79,168,181	\$764,585	1.0%
	8/31/2015 **		\$17,309,621	\$7,949,803	\$9,359,818	117.7%	\$3,279,958	\$706,956	\$2,573,002	364.0%	\$20,589,579	\$8,656,759	\$11,932,820	137.8%
Fiscal Year Total			\$3,481,361,812	\$3,280,229,170	\$201,132,642	6.1%	\$1,048,338,613	\$1,104,367,893	(\$56,029,280)	-5.1%	\$4,529,700,425	\$4,384,597,063	\$145,103,362	3.3%

* FY 15 includes 6 days

** FY 15 includes 2 days; FY 14 includes 1 day

Texas Lottery Commission Fiscal Year Over Year Change in Sales



Note: Report is prepared on a Fiscal Year basis.
 FY14 week 1 is a full week of sales and week 52 includes 8 days.
 FY15 week 1 is not a full week of sales at 6 days and week 52 includes 9 days.

Texas Lottery Commission
Scratch Tickets by Price Point
Sales, Prize Expense, Sales Contribution and Payout Percentage With Year Over Year Changes
Unaudited

Fiscal Year	Price Point	# of Active Games	FY Sales	% of Scratch Ticket Sales	Year over Year Change in Sales	FY Prize Expense	Year over Year Change in Prize Expense	FY Sales Contribution	Year over Year Change in Contribution	Average Prize Payout %	Year over Year Change in Payout %
2014	\$1.00	32	180,520,764	5.5%		108,154,874		72,365,890		59.9%	-1.3%
Through	\$2.00	40	372,307,184	11.4%		241,391,161		130,916,023		64.8%	-0.2%
8/31/2014	\$3.00	18	357,149,457	10.9%		234,370,826		122,778,631		65.6%	0.2%
	\$5.00	58	1,049,325,925	32.0%		712,600,291		336,725,634		67.9%	-0.2%
	\$10.00	18	635,997,910	19.4%		447,179,391		188,818,519		70.3%	-1.1%
	\$20.00	11	541,697,980	16.5%		405,590,565		136,107,415		74.9%	0.0%
	\$50.00	3	143,229,950	4.4%		111,252,227		31,977,723		77.7%	0.0%
Total		180	\$3,280,229,170			\$2,260,539,335		\$1,019,689,835		68.9%	0.0%
2015	\$1.00	25	164,327,732	4.7%		99,447,854		64,879,878		60.5%	1.0%
thru	\$2.00	37	348,742,798	10.0%		228,421,458		120,321,340		65.5%	1.0%
8/31/2015	\$3.00	16	347,698,692	10.0%		229,188,702		118,509,991		65.9%	0.4%
	\$5.00	56	1,061,818,380	30.5%		721,434,312		340,384,068		67.9%	0.0%
	\$10.00	20	739,198,530	21.2%		519,421,515		219,777,015		70.3%	-0.1%
	\$20.00	12	640,833,880	18.4%		480,456,550		160,377,330		75.0%	0.1%
	\$50.00	4	178,741,800	5.1%		138,960,382		39,781,418		77.7%	0.1%
Total		170	\$3,481,361,812			\$2,417,330,773		\$1,064,031,039		69.4%	0.8%
Variance	\$1.00	-7	-16,193,032		-9.0%	-8,707,020	-8.1%	-7,486,012	-10.3%	0.61%	
2015 to	\$2.00	-3	-23,564,386		-6.3%	-12,969,702	-5.4%	-10,594,684	-8.1%	0.66%	
2014	\$3.00	-2	-9,450,765		-2.6%	-5,182,124	-2.2%	-4,268,641	-3.5%	0.29%	
	\$5.00	-2	12,492,455		1.2%	8,834,021	1.2%	3,658,434	1.1%	0.03%	
	\$10.00	2	103,200,620		16.2%	72,242,123	16.2%	30,958,497	16.4%	-0.04%	
	\$20.00	1	99,135,900		18.3%	74,865,985	18.5%	24,269,915	17.8%	0.10%	
	\$50.00	1	35,511,850		24.8%	27,708,155	24.9%	7,803,695	24.4%	0.07%	
Total		-10	\$201,132,642		6.1%	\$156,791,437	6.9%	\$44,341,205	4.3%	0.52%	

Notes - Scratch Ticket Variances

Texas Lottery Commission
Scratch Tickets by Price Point
Sales, Prize Expense, Sales Contribution and Payout Percentage With Year Over Year Changes
Unaudited

		FY 2015	FY 2014	Difference
Sales	\$1 - \$5	\$1,922,587,602	\$1,959,303,330	-\$36,715,728
Prize Exp.	\$1 - \$5	\$1,278,492,326	\$1,296,517,152	-\$18,024,826
Sales Cont.	\$1 - \$5	\$644,095,276	\$662,786,178	-\$18,690,902
Prize Exp. %	\$1 - \$5	66.5%	66.2%	0.3%
		FY 2015	FY 2014	Difference
Sales	\$10 - \$50	\$1,558,774,210	\$1,320,925,840	\$237,848,370
Prize Exp.	\$10 - \$50	\$1,138,838,447	\$964,022,184	\$174,816,263
Sales Cont.	\$10 - \$50	\$419,935,763	\$356,903,656	\$63,032,107
Prize Exp. %	\$10 - \$50	73.1%	73.0%	0.1%
		FY 2015	FY 2014	Difference
Sales	Scratch	\$3,481,361,812	\$3,280,229,170	\$201,132,642
Prize Exp.	Scratch	\$2,417,330,773	\$2,260,539,335	\$156,791,437
Sales Cont.	Scratch	\$1,064,031,039	\$1,019,689,835	\$44,341,205
Prize Exp. %	Scratch	69.4%	68.9%	0.5%

		FY 2015	FY 2014	Difference
Sales	\$1 - \$10	\$2,661,786,132	\$2,595,301,240	\$66,484,892
Prize Exp.	\$1 - \$10	\$1,797,913,841	\$1,743,696,543	\$54,217,298
Sales Cont.	\$1 - \$10	\$863,872,291	\$851,604,697	\$12,267,594
Prize Exp. %	\$1 - \$10	67.5%	67.2%	0.4%
		FY 2015	FY 2014	Difference
Sales	\$20 - \$50	\$819,575,680	\$684,927,930	\$134,647,750
Prize Exp.	\$20 - \$50	\$619,416,932	\$516,842,792	\$102,574,140
Sales Cont.	\$20 - \$50	\$200,158,748	\$168,085,138	\$32,073,610
Prize Exp. %	\$20 - \$50	75.6%	75.5%	0.1%
		FY 2015	FY 2014	Difference
Sales	Scratch	\$3,481,361,812	\$3,280,229,170	\$201,132,642
Prize Exp.	Scratch	\$2,417,330,773	\$2,260,539,335	\$156,791,437
Sales Cont.	Scratch	\$1,064,031,039	\$1,019,689,835	\$44,341,205
Prize Exp. %	Scratch	69.4%	68.9%	0.5%

Texas Lottery Commission
Comparison to Previous Year
Unaudited

	Year Ending 8/31/2015	% of Sales	Year Ending 8/31/2014	% of Sales	\$ change	% change
Total Sales	<u>\$4,529,700,425</u>		<u>\$4,384,597,063</u>		<u>\$145,103,362</u>	3.31%
Scratch Tickets	<u>\$3,481,361,812</u>	76.9%	<u>\$3,280,229,170</u>	74.8%	<u>\$201,132,642</u>	6.13%
Lotto	\$123,373,545	2.7%	\$135,608,856	3.1%	-\$12,235,311	-9.02%
Lotto Extra	\$19,609,622	0.4%	\$18,732,210	0.4%	\$877,412	4.68%
Pick 3	\$251,642,139	5.6%	\$254,397,783	5.8%	-\$2,755,644	-1.08%
Pick 3 Sum It Up	\$5,197,226	0.1%	\$5,039,053	0.1%	\$158,174	3.14%
Cash Five	\$50,245,841	1.1%	\$52,415,222	1.2%	-\$2,169,381	-4.14%
Texas Two Step	\$55,323,984	1.2%	\$57,252,954	1.3%	-\$1,928,970	-3.37%
Mega Millions	\$148,665,372	3.3%	\$183,854,415	4.2%	-\$35,189,043	-19.14%
Megaplier	\$35,287,608	0.8%	\$40,264,558	0.9%	-\$4,976,950	-12.36%
Daily 4	\$86,615,569	1.9%	\$83,340,521	1.9%	\$3,275,049	3.93%
Daily 4 Sum It Up	\$4,960,023	0.1%	\$5,143,869	0.1%	-\$183,846	-3.57%
Powerball	\$201,231,022	4.4%	\$197,713,851	4.5%	\$3,517,171	1.78%
Power Play	\$25,782,308	0.6%	\$24,351,993	0.6%	\$1,430,315	5.87%
All or Nothing	\$37,748,044	0.8%	\$46,252,609	1.1%	-\$8,504,565	-18.39%
Monopoly	\$2,656,310	0.1%	\$0	-	\$2,656,310	-
Total Draw Game Sales	<u>\$1,048,338,613</u>		<u>\$1,104,367,893</u>		<u>-\$56,029,280</u>	-5.07%

Totals may not sum due to rounding.

Texas Lottery Commission
Yearly Sales Summary
Unaudited

SCRATCH TICKETS
TOP TEN SELLING GAMES

For the Year Ending: 8/31/15

Rank	Price Point	Game	Sales (Millions)
1	\$ 20	100X THE CASH	\$158.371
2	\$ 10	50X THE CASH	\$134.090
3	\$ 10	\$200,000,000 CASH BLOWOUT	\$120.834
4	\$ 50	MILLIONAIRES CLUB	\$108.440
5	\$ 5	20X THE CASH	\$ 89.976
6	\$ 20	ONE MILLION CASH	\$ 84.605
7	\$ 5	\$100,000 CASHWORD-O-RAMA	\$ 81.953
8	\$ 20	\$500 MILLION EXTREME CASH BLAST	\$ 79.810
9	\$ 10	SUPER TICKET™ 7's	\$ 78.805
10	\$ 10	SUPER WEEKLY GRAND	\$ 71.667

Texas Lottery Commission
Prize Payout Tracking Report
Unaudited

Through the Year Ending: 8/31/15

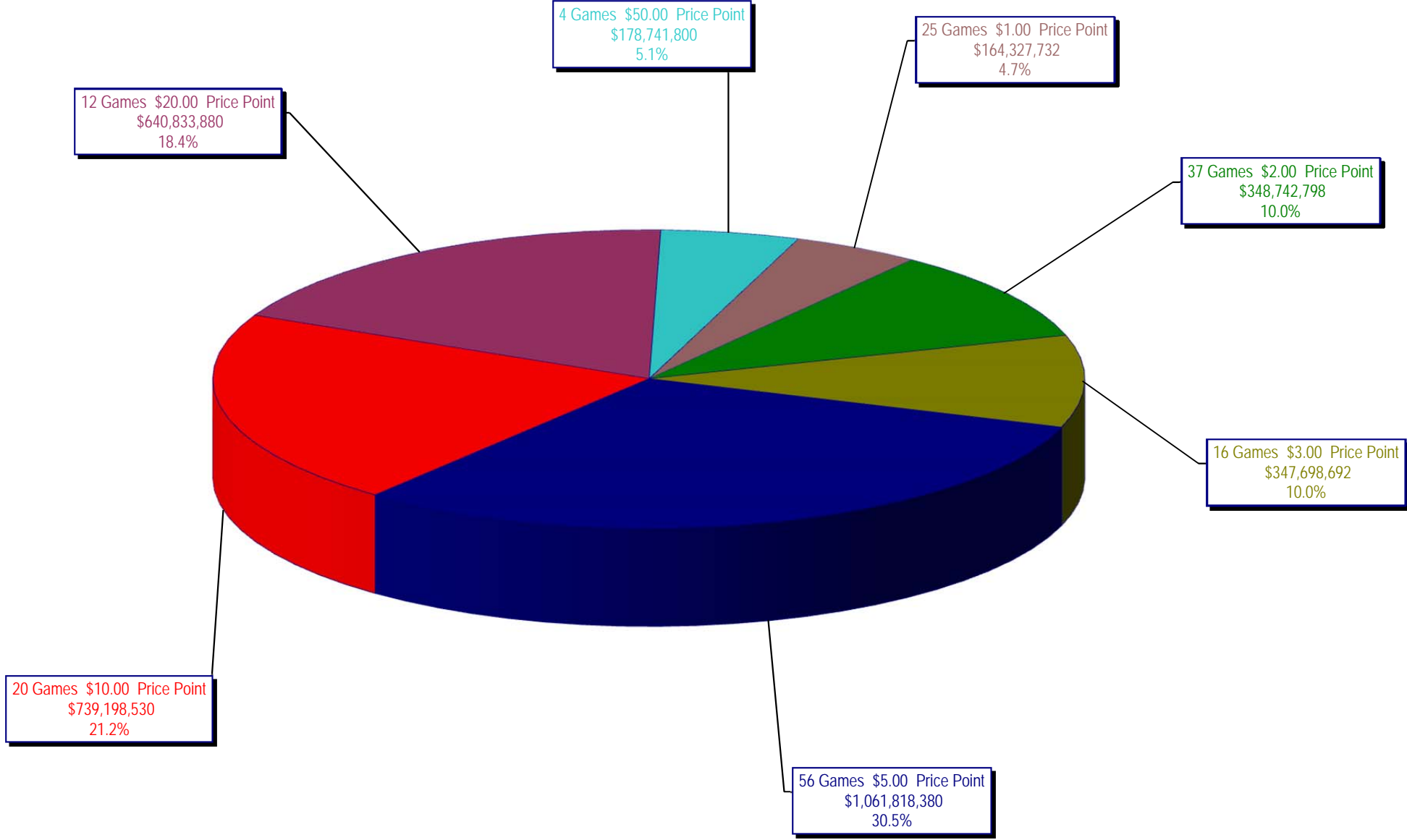
Draw Game Sales

		FY Sales Through Year Ending 8/31/2015		FY Prize Expense Through Year Ending 8/31/2015	Actual* Prize Payout	Base Payout (Prize Pool)
Lotto	\$	123,373,545	\$	62,313,091	50.51%	54.00%
Lotto Extra		19,609,622		10,782,738	54.99%	53.70%
Pick 3		251,642,139		118,475,260	47.08%	50.00%
Pick 3 Sum It Up		5,197,226		2,801,925	53.91%	50.00%
Cash Five		50,245,841		25,122,921	50.00%	50.00%
Texas Two Step		55,323,984		28,120,364	50.83%	50.00%
Mega Millions		148,665,372		75,713,187	50.93%	50.00%**
Megaplier		35,287,608		17,613,336	49.91%	N/A
Daily 4		86,615,569		38,422,525	44.36%	50.00%
Daily 4 Sum It Up		4,960,023		1,903,364	38.37%	50.00%
Powerball		201,231,022		100,492,356	49.94%	50.00%**
Power Play		25,782,308		12,875,858	49.94%	N/A
All or Nothing		37,748,044		21,155,504	56.04%	55.98%
Monopoly		2,656,310		3,617,028	136.17%	50.00%
Totals	\$	1,048,338,613	\$	519,409,456	49.55%	

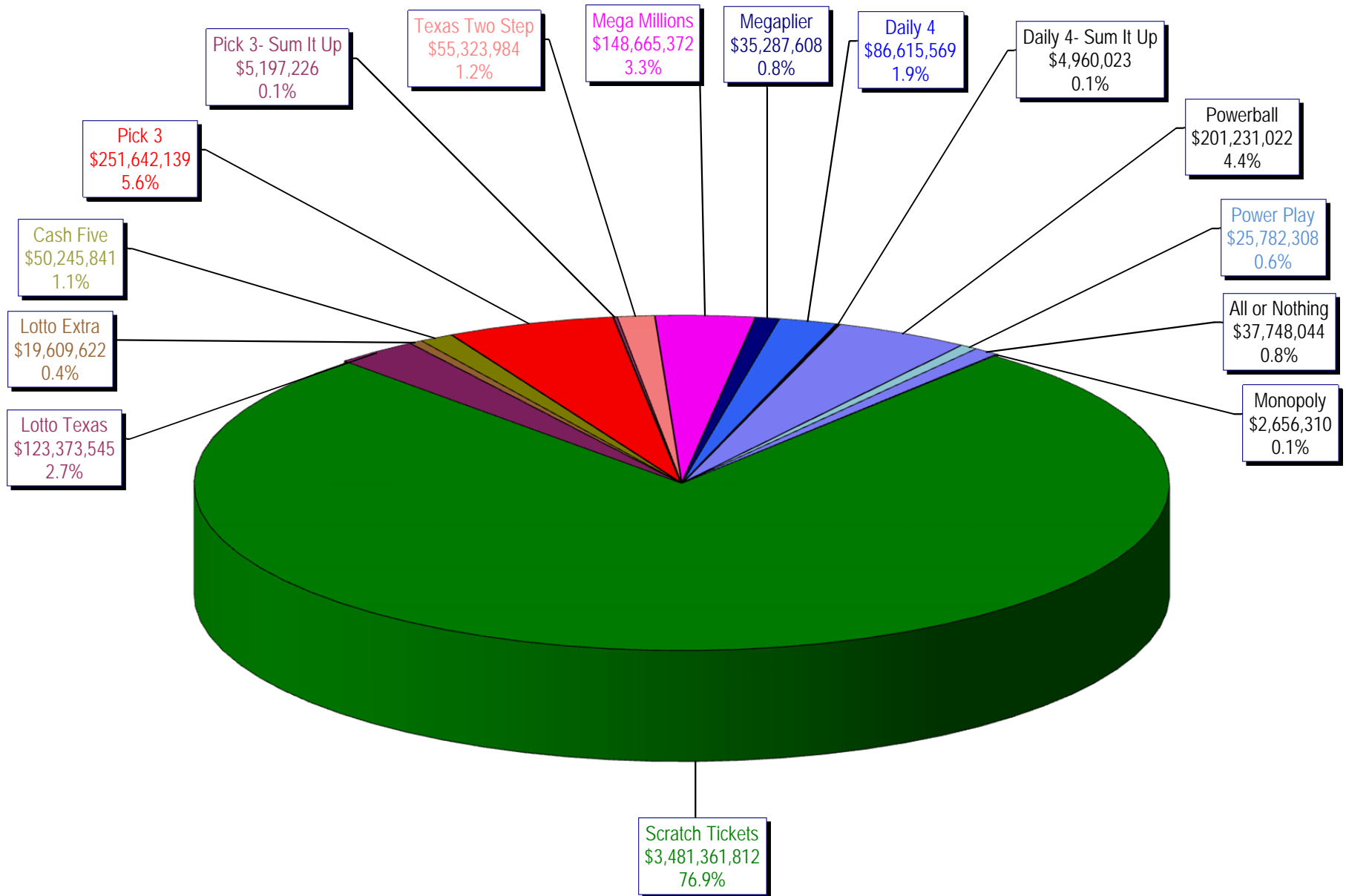
* Before Unclaimed Prizes

** Estimated; depends on # of guaranteed prizes won in Texas

Texas Lottery Commission
Scratch Ticket Sales
For the Year Ending 8/31/15
(Unaudited)



**Texas Lottery Commission
All Game Sales
For the Year Ending 8/31/15
(Unaudited)**



Texas Lottery Commission - Weekly Sales Summary for FY 2015 (Unaudited)

Week Ended	Scratch Tickets	New Games & Dates	Lotto Texas	Jackpot W S	Lotto Extra	Pick 3	Pick 3 Sum It Up	Cash Five	Texas Two Step	Jackpot M TH	Mega Millions	Jackpot T F	Megaplier	Daily 4	Daily 4 Sum It Up	Powerball	Jackpot W S	Power Play	All or Nothing	Monopoly	Jackpot F	Total	Per Cap.	
9/08/2014*	62,861,604	1589 (\$1.N); 1592 (\$5.N) - 9/1/14	2,281,237	6 6.25	341,232	4,827,600	92,305	958,777	918,635	225 300	1,847,432	25 33	475,313	1,640,023	104,626	3,465,202	100 110	450,723	786,340			81,051,048	3.11	
9/13/2014	61,436,533	0	2,299,834	6.5 6.75	344,225	4,787,666	91,850	960,067	1,214,553	425 575	1,992,737	41 52	501,468	1,571,433	97,036	3,957,407	127 149	497,718	781,088			80,533,614	3.09	
9/20/2014	60,959,234	1647 (\$2.N); 1619 (\$5.N) - 9/15/14	2,307,003	7 7.25	347,119	4,624,949	89,960	952,214	1,582,291	750 925	2,149,120	62 72	528,733	1,536,913	95,355	4,985,548	171 196	597,868	770,822			81,527,128	3.13	
9/27/2014	59,710,056	0	2,357,199	7.5 8.25	353,734	4,540,964	89,289	938,745	1,244,640	1,175 200	2,417,365	83 93	579,889	1,512,957	91,998	4,478,698	225 40	544,723	770,628			79,630,884	3.06	
10/4/2014	62,119,854	0	2,385,322	9 9.5	360,937	4,942,321	94,197	971,047	854,141	200 200	2,966,004	105 120	692,825	1,588,795	98,392	2,443,237	50 60	348,166	786,038			80,651,275	3.09	
10/11/2014	61,253,665	1608 (\$1.N); 1653 (\$5.N); 1651 (\$10.N) - 10/6/14	2,363,624	10.25 11	355,219	4,893,634	94,926	959,659	935,385	225 300	3,310,874	136 150	748,248	1,580,735	94,717	2,522,774	70 80	356,145	769,392			80,238,997	3.08	
10/18/2014	60,230,048	0	2,267,582	11.5 5	343,643	4,664,420	92,081	946,399	842,255	200 225	3,839,669	166 180	841,086	1,522,939	90,307	2,937,145	90 100	398,723	752,154			79,768,450	3.06	
10/25/2014	62,384,112	1655 (\$1.N); 1652 (\$2.N); 1638 (\$10.N); 1637 (\$20.N) - 10/20/14	2,201,043	5.25 5.5	330,460	4,585,640	89,676	933,854	823,726	200 225	4,755,898	200 224	990,074	1,560,894	96,697	3,449,128	110 125	444,897	746,246	467,410	15		83,859,755	3.22
11/1/2014	63,404,713	1648 (\$3.N) - 10/31/14	2,289,864	5.75 6	346,139	4,620,420	87,141	925,312	993,957	300 425	5,950,540	252 284	1,199,010	1,554,893	93,945	3,903,664	142 159	494,803	733,770	375,360	18		86,973,530	3.34
11/8/2014	65,486,719	1600 (\$2.N); 1656 (\$5.N) - 11/3/14	2,269,671	6.25 6.5	345,144	4,823,896	92,098	958,406	1,336,742	550 700	4,908,320	321 15	1,013,337	1,669,728	97,535	4,560,744	178 203	561,387	753,046	358,980	21		89,235,751	3.42
11/15/2014	61,745,521	1649 (\$5.N) - 11/13/14	2,172,758	6.75 7	326,413	4,582,139	86,975	936,882	1,604,425	900 1,100	1,863,118	20 26	471,023	1,587,677	91,661	2,341,252	40 50	329,995	730,482	325,005	15		79,195,125	3.04
11/22/2014	66,353,583	1591 (\$2.N); 1659 (\$5.N); 1650 (\$5.N) - 11/17/14	2,199,718	7.25 7.5	334,361	4,639,564	87,768	933,490	851,281	200 225	2,013,021	35 43	503,022	1,588,603	91,235	2,470,536	60 70	341,955	728,436	325,095	18		83,461,667	3.20
11/29/2014	60,471,184	0	2,214,747	7.75 8.5	337,671	4,624,896	88,080	912,039	955,695	300 400	2,040,181	52 61	503,117	1,577,411	90,692	2,632,388	80 90	362,091	681,192	282,930	21		77,774,313	2.98
12/6/2014	66,648,696	1603 (\$1.N); 1646 (\$2.N); 1645 (\$5.N) - 12/01/14	2,368,094	9 9.75	359,684	5,203,649	97,575	987,770	1,292,696	550 725	2,397,206	70 80	577,206	1,786,014	106,986	2,312,972	40 50	333,011	759,472	280,090	25		85,511,121	3.28
12/13/2014	65,708,630	1613 (\$3.N) - 12/10/14	2,390,912	10.25 11	360,296	4,965,326	90,906	968,380	860,861	200 225	2,763,671	91 102	644,993	1,730,629	100,850	2,441,310	60 70	346,197	743,438	241,830	25		84,358,228	3.24
12/20/2014	68,551,298	1664 (\$2.N); 1665 (\$5.N); 1663 (\$10.N) - 12/15/14	2,403,956	11.5 12.25	365,207	4,980,735	94,034	972,605	840,763	200 200	3,150,078	113 125	726,548	1,722,159	99,838	2,593,858	80 90	364,498	736,822	0		87,602,398	3.36	
12/27/2014	73,858,618	0	2,569,741	13 13.75	386,983	4,792,061	87,561	939,518	839,204	225 300	3,523,976	142 156	786,676	1,640,658	93,236	3,244,628	100 110	431,074	671,042	0		93,864,975	3.60	
1/3/2015	67,733,268	0	2,579,932	14.5 5	391,775	4,873,207	92,090	972,634	794,716	200 225	4,061,330	172 188	895,771	1,677,541	97,009	3,730,196	120 131	487,253	701,714	0		89,088,435	3.42	
1/10/2015	64,745,641	1661 (\$1.N); 1609 (\$3.N); 1666 (\$20.N) - 1/5/15	2,269,384	5.25 5.5	353,334	4,633,563	89,809	965,014	839,722	200 225	5,160,810	206 221	1,101,434	1,574,307	92,418	3,969,588	146 162	507,993	708,082	(110)		87,010,988	3.34	
1/17/2015	64,015,166	0	2,321,110	5.75 6	362,124	4,713,502	94,319	961,349	870,940	300 200	5,796,919	246 270	1,219,766	1,636,351	95,924	4,374,663	176 194	557,630	690,082	(60)		87,709,783	3.37	
1/24/2015	62,569,156	1657 (\$2.N); 1662 (\$5.N) - 1/19/15	2,172,603	6.25 6.5	340,335	4,515,824	94,602	932,895	880,883	225 300	2,000,036	15 20	513,701	1,607,911	97,318	5,280,704	208 230	641,822	686,808	0		82,334,598	3.16	
1/31/2015	68,001,588	0	2,305,997	6.75 7	365,475	4,719,942	97,954	969,989	1,217,761	425 575	2,127,914	25 32	545,728	1,700,632	97,176	7,153,312	261 289	841,856	733,290	(25)		90,878,588	3.49	
2/7/2015	75,677,650	1701 (\$1.N); 1670 (\$5.N); 1620 (\$10.N) - 2/2/15	2,493,246	7.25 7.5	392,502	5,114,958	105,675	1,009,912	1,511,180	725 925	2,378,853	40 49	604,450	1,791,305	103,366	13,888,215	317 380	1,485,755	782,868	(75)		107,339,859	4.12	
2/14/2015	75,368,712	0	2,732,167	7.75 8.5	422,012	5,014,682	102,578	1,010,709	874,297	200 225	2,863,303	61 74	697,827	1,735,161	98,225	27,170,708	500 40	2,547,539	822,540	0		121,460,459	4.66	
2/21/2015	74,833,076	1660 (\$2.N); 1612 (\$2.N); 1676 (\$5.N) - 2/16/15	2,500,395	9.25 10	391,610	5,114,765	110,692	1,011,829	942,295	300 200	3,027,808	88 100	721,729	1,782,129	104,637	2,964,066	50 60	418,243	774,980	(5)		94,698,248	3.63	
2/28/2015	69,918,013	0	2,414,393	10.75 11.25	389,658	5,048,249	107,098	982,637	840,025	225 200	3,147,289	112 127	747,651	1,771,057	100,883	2,985,120	70 80	423,838	777,470	(15)		89,653,365	3.44	
3/7/2015	74,848,961	1681 (\$1.N); 1658 (\$5.N) - 3/2/15	2,604,415	12 13	416,225	5,299,039	112,941	1,049,413	906,224	225 200	2,073,964	15 20	538,327	1,832,333	103,971	3,678,412	90 100	503,040	827,806	(40)		94,795,029	3.64	
3/14/2015	70,079,409	0	2,547,123	13.8 14.5	407,021	5,156,740	109,709	1,024,207	955,233	225 300	2,077,720	25 33	536,912	1,798,910	100,491	4,017,992	119 137	535,845	776,660	0		90,123,971	3.46	
3/21/2015	70,388,686	1667 (\$2.N); 1683 (\$3.N); 1703 (\$5.N); 1617 (\$20.N) - 3/16/15	2,587,215	15 15.75	410,628	4,927,739	105,711	1,003,124	988,911	450 200	2,194,003	42 51	557,110	1,726,997	95,151	2,723,788	40 50	394,888	765,530	0		88,849,481	3.41	
3/28/2015	70,280,600	0	2,386,826	16.25 5	380,219	4,844,148	102,062	985,160	868,267	200 225	2,032,743	59 15	524,442	1,714,476	94,175	2,535,547	40 40	367,154	759,986	0		87,875,805	3.37	

Texas Lottery Commission - Weekly Sales Summary for FY 2015 (Unaudited)

Week Ended	Scratch Tickets	New Games & Dates	Lotto Texas	Jackpot W	S	Lotto Extra	Pick 3	Pick 3 Sum It Up	Cash Five	Texas Two Step	Jackpot M	TH	Mega Millions	Jackpot T	F	Megaplier	Daily 4	Daily 4 Sum It Up	Powerball	Jackpot W	S	Power Play	All or Nothing	Monopoly	Jackpot F	Total	Per Cap.	
4/4/2015	74,369,952	0	2,308,753	5.25	5.5	373,694	5,203,500	109,951	1,017,291	890,722	200	225	1,986,722	20	25	522,905	1,818,512	107,313	2,837,713	50	60	408,741	793,102	0		92,748,869	3.56	
4/11/2015	67,416,817	1669 (\$1.N); 1674 (\$2.N); 1685 (\$5.N); 1707 (\$10.N) - 4/6/15	2,260,648	5.75	6	368,785	5,199,419	109,490	1,001,842	1,091,966	300	425	2,006,312	30	39	525,064	1,776,045	100,599	2,976,801	70	80	421,254	756,620	0		86,011,661	3.30	
4/18/2015	68,393,316	0	2,277,281	6.25	6.5	374,417	5,070,797	107,974	990,790	1,052,087	600	200	2,169,304	47	55	555,180	1,754,350	97,212	2,539,428	40	50	374,938	740,874	0		86,497,948	3.32	
4/25/2015	70,078,182	1684 (\$5.N); 1706 (\$10.N) - 4/20/15	2,262,087	6.75	7	370,876	5,028,724	118,227	968,731	962,012	225	300	2,346,852	65	74	585,227	1,726,601	92,983	2,424,825	40	50	358,519	711,486	0		88,035,332	3.38	
5/2/2015	71,744,718	0	2,222,040	7.25	5	362,649	5,199,900	121,258	982,424	1,270,609	450	600	2,606,191	85	96	637,620	1,775,745	103,432	2,595,143	60	70	376,355	707,748	0		90,705,831	3.48	
5/9/2015	73,415,978	1675 (\$1.N); 1686 (\$5.N); 1593 (\$50.N) - 5/4/15	2,190,666	5.25	5.5	358,908	5,207,575	123,165	982,347	1,770,599	775	1,000	3,094,898	110	126	728,892	1,759,116	103,250	2,782,676	80	90	399,302	708,948	0		93,626,319	3.59	
5/16/2015	72,152,109	0	2,199,372	5.75	6	366,840	4,862,743	109,254	971,794	1,305,149	1,250	200	3,495,767	140	159	807,301	1,718,053	101,269	3,269,568	100	110	457,531	698,134	0		92,514,883	3.55	
5/23/2015	70,399,950	1672 (\$2.N); 1688 (\$5.N); 1704 (\$5.N); 1671 (\$20.N) - 5/18/15	2,225,308	6.25	6.5	369,516	4,782,325	106,019	967,908	971,436	225	300	4,206,607	173	194	947,603	1,677,575	96,493	3,697,319	121	138	500,821	697,348	0		91,646,226	3.52	
5/30/2015	68,547,554	0	2,222,627	6.75	7	374,162	4,567,118	102,912	924,319	1,156,848	425	600	4,847,135	214	233	1,076,398	1,601,131	91,945	4,053,140	154	171	544,702	665,510	0		90,775,500	3.48	
6/6/2015	71,254,006	1698 (\$3.N); 1709 (\$5.N) - 6/01/15	2,284,247	7.25	7.5	379,728	4,968,343	109,591	982,319	886,747	200	225	3,720,801	253	15	869,379	1,732,760	97,475	3,524,353	188	40	478,874	705,086	0		91,993,709	3.53	
6/13/2015	65,878,375	0	2,208,028	7.75	8.75	365,228	4,720,171	103,425	953,573	1,093,289	300	450	1,978,921	20	26	527,753	1,621,376	90,873	2,504,581	50	60	367,387	681,798	0		83,094,778	3.19	
6/20/2015	66,658,742	1680(\$1.N); 1705(\$2.N); 1673(\$5.N); 1690(\$5.N) - 6/15/15	2,242,113	9.25	9.75	375,741	4,608,173	100,196	945,710	1,027,125	600	200	2,083,633	35	44	553,303	1,602,123	90,709	2,657,366	70	80	382,712	671,628	0		83,999,273	3.22	
6/27/2015	65,282,276	0	2,282,481	10.25	11.25	381,246	4,509,601	95,019	941,407	859,887	200	225	2,245,714	52	64	578,079	1,575,489	87,244	2,306,870	40	50	345,308	665,024	0		82,155,644	3.15	
7/4/2015	67,757,752	0	2,353,443	12.00	12.75	394,236	4,876,081	103,977	963,626	904,015	300	200	2,472,706	74	84	636,473	1,668,738	91,480	2,489,057	60	70	372,313	681,396	0		85,765,292	3.29	
7/11/2015	64,718,254	1710 (\$2.N); 1668 (\$5.N); 1607 (\$10.N) - 7/6/15	2,385,635	13.5	13.75	398,273	4,781,949	102,113	960,531	937,800	225	300	2,859,381	96	106	706,608	1,664,674	90,614	2,293,500	40	50	346,375	676,594	(60)		82,922,239	3.08	
7/18/2015	64,957,977	0	2,392,139	14.75	15.75	398,625	4,667,390	97,419	939,029	1,222,930	450	600	3,222,371	123	140	767,643	1,612,165	85,167	2,371,064	60	70	351,688	665,156	0		83,750,762	3.11	
7/25/2015	62,541,241	1712 (\$1.N); 1682 (\$2.N); 1687 (\$5.N) - 7/20/15 1714 (\$3.N) - 7/21/15	2,423,998	16	16.75	411,009	4,422,996	92,150	931,092	1,513,511	750	950	2,576,749	152	15	641,592	1,563,274	82,145	2,560,657	80	90	372,674	638,118	0		80,771,206	3.00	
8/1/2015	66,468,460	0	2,523,821	17.25	18	419,755	4,567,453	96,120	927,014	853,334	200	225	1,894,596	20	25	512,136	1,577,517	83,570	3,190,531	100	110	442,667	653,976	0		84,210,949	3.12	
8/8/2015	62,412,598	1691 (\$1.N); 1692 (\$2.N); 1693 (\$5.N); 1694 (\$10.N) - 8/3/15	2,620,468	18.75	19.5	434,174	4,750,719	99,318	949,196	1,113,903	300	450	1,814,609	15	20	491,040	1,647,885	87,493	2,311,260	40	50	343,372	667,938	0		79,743,972	2.96	
8/15/2015	62,089,389	0	2,659,034	20.25	20.75	442,004	4,463,481	93,825	921,946	1,433,091	600	775	1,871,484	25	30	498,629	1,576,953	82,479	2,453,406	60	70	356,910	648,358	0		79,590,988	2.95	
8/22/2015	62,437,148	1678 (\$5.N); 1679 (\$5.N); 1716 (\$10.N); 1713 (\$20.N) - 8/17/15	2,673,773	21.75	22.5	444,367	4,613,737	102,028	916,043	1,172,352	975	200	1,969,306	39	47	518,453	1,599,029	84,311	2,655,140	80	90	379,899	651,020	0		80,216,606	2.98	
8/29/2015	61,403,206	0	2,692,539	23	24	447,619	4,729,994	104,907	908,657	930,962	225	300	2,126,325	55	64	554,797	1,589,330	82,895	3,252,774	100	110	446,774	661,988	0		79,932,766	2.97	
8/31/2015	17,309,621	0	295,241	0	0	50,485	884,476	20,293	212,369	488,248	0	0	321,352	0	0	78,735	298,507	16,075	424,408	0	0	55,568	134,202	0		20,589,579	0.76	
weekly change	0.0%		0.0%			0.0%	0.0%	0.0%	0.0%	0.0%			0.0%			0.0%	0.0%	0.0%	0.0%			0.0%	0.0%			0.0%		
SALES			SALES			SALES	SALES	SALES	SALES	SALES			SALES			SALES	SALES	SALES	SALES			SALES	SALES	SALES		SALES	% of Sales	
Calendar Year to date	2,368,039,737		82,655,619			13,462,865	168,180,673	3,607,255	33,611,333	36,921,532			94,711,234			23,055,418	58,401,632	3,277,073	144,674,809			18,340,338	24,715,278	(390)		3,073,654,406	100.0%	
Fiscal Year to date 2015	3,481,361,812		123,373,545			19,609,622	251,642,139	5,197,226	50,245,841	55,323,984			148,665,372			35,287,608	86,615,569	4,960,023	201,231,022			25,782,308	37,748,044	2,656,310		4,529,700,425	100.0%	

*Full week includes 1 day from FY14