



WEEKLY SALES SUMMARY

Unaudited

Week Ending: 01/02/2010

Texas Lottery Commission
Fiscal Year to Date Sales Comparison
Unaudited

Through the week ending 01/02/2010 (18 weeks)

Sales by Game	FY 2008 *	FY 2009 **	FY 2010	\$ Change		% Change	
				FY 2010 to FY 2008	FY 2010 to FY 2009 to	FY 2010 to FY 2008	FY 2010 to FY 2009
Instants	\$ 966,297,883	\$ 926,449,701	\$ 933,435,118	\$ -32,862,765	\$ 6,985,417	-3.4%	0.8%
Lotto Texas	73,830,314	62,070,772	93,655,485	19,825,171	31,584,713	26.9%	50.9%
Pick 3	97,475,116	95,249,728	90,733,222	-6,741,894	-4,516,506	-6.9%	-4.7%
Pick 3 Sum It Up	1,551,542	2,015,852	1,812,843	261,301	-203,009	-	-10.1%
Cash 5	26,881,085	24,224,747	22,875,597	-4,005,488	-1,349,150	-14.9%	-5.6%
Texas Two Step	14,445,745	15,309,419	15,362,601	916,856	53,182	6.3%	0.3%
Mega Millions	50,776,000	59,353,340	65,576,042	14,800,042	6,222,703	29.1%	10.5%
Megaplier	12,619,504	14,030,749	14,663,070	2,043,566	632,321	16.2%	4.5%
Daily 4	14,037,016	14,418,754	17,579,753	3,542,737	3,160,999	-	21.9%
Daily 4 Sum It Up	3,712,877	1,853,253	1,697,229	-2,015,649	-156,025	-	-8.4%
Total	\$ 1,261,627,081	\$ 1,214,976,314	\$ 1,257,390,959	\$ -4,236,122	\$ 42,414,645	-0.3%	3.5%

* 3 extra days ** 1 extra day

Texas Lottery Commission
Fiscal Year to Date Cumulative Average Sales Comparison
Unaudited

Through the week ending 01/02/2010 (18 weeks)

Sales by Game	FY 2008	FY 2009	FY 2010
Instants	\$ 7,608,645	\$ 7,411,598	\$ 7,527,703
Lotto Texas	581,341	496,566	755,286
Pick 3	767,521	761,998	731,720
Pick 3 Sum It Up	12,217	16,127	14,620
Cash 5	211,662	193,798	184,481
Texas Two Step	113,746	122,475	123,892
Mega Millions	399,811	474,827	528,839
Megaplier	99,366	112,246	118,251
Daily 4	110,528	115,350	141,772
Daily 4 Sum It Up	29,235	14,826	13,687
Total	\$ <u>9,934,072</u>	\$ <u>9,719,811</u>	\$ <u>10,140,250</u>
	thru 01/05/2008 127 days	thru 01/03/2009 125 days	thru 01/02/2010 124 days

Texas Lottery Commission
Fiscal Year Over Year Change in Sales
Unaudited
FY 2010 Compared to FY 2009

Week	FY 2010 Week Ending	INSTANT TICKETS				ON-LINE GAMES				TOTAL SALES			
		FY 2010	FY 2009	Difference	% change - Cumulative Sales	FY 2010	FY 2009	Difference	% change - Cumulative Sales	FY 2010	FY 2009	Difference	% change - Cumulative Sales
1	9/5/2009**	\$40,148,241	\$44,890,104	(\$4,741,863)	-10.6%	\$15,859,194	\$14,722,011	\$1,137,184	7.7%	\$56,007,435	\$59,612,115	(\$3,604,680)	-6.0%
2	9/12/2009	\$49,896,100	\$46,309,551	\$3,586,549	7.7%	\$18,206,315	\$13,704,860	\$4,501,455	32.8%	\$68,102,415	\$60,014,411	\$8,088,004	13.5%
3	9/19/2009	\$50,971,937	\$42,923,171	\$8,048,766	18.8%	\$18,859,622	\$12,291,263	\$6,568,359	53.4%	\$69,831,559	\$55,214,434	\$14,617,125	26.5%
4	9/26/2009	\$49,975,243	\$47,042,801	\$2,932,442	6.2%	\$19,345,435	\$14,222,339	\$5,123,096	36.0%	\$69,320,678	\$61,265,140	\$8,055,538	13.1%
5	10/3/2009	\$52,283,569	\$50,747,162	\$1,536,407	3.0%	\$20,991,695	\$15,784,472	\$5,207,223	33.0%	\$73,275,264	\$66,531,634	\$6,743,630	10.1%
6	10/10/2009	\$52,238,261	\$49,763,789	\$2,474,472	5.0%	\$21,547,439	\$15,622,498	\$5,924,941	37.9%	\$73,785,700	\$65,386,287	\$8,399,413	12.8%
7	10/17/2009	\$50,806,599	\$49,299,053	\$1,507,546	3.1%	\$23,114,594	\$15,167,940	\$7,946,654	52.4%	\$73,921,193	\$64,466,993	\$9,454,200	14.7%
8	10/24/2009	\$50,731,592	\$49,977,581	\$754,011	1.5%	\$17,274,411	\$14,525,843	\$2,748,568	18.9%	\$68,006,003	\$64,503,424	\$3,502,579	5.4%
9	10/31/2009	\$50,684,853	\$50,346,542	\$338,311	0.7%	\$15,710,720	\$14,838,845	\$871,876	5.9%	\$66,395,573	\$65,185,387	\$1,210,187	1.9%
10	11/7/2009	\$54,633,928	\$54,860,087	(\$226,159)	-0.4%	\$16,961,611	\$16,057,069	\$904,542	5.6%	\$71,595,539	\$70,917,156	\$678,383	1.0%
11	11/14/2009	\$52,109,218	\$53,484,812	(\$1,375,594)	-2.6%	\$16,407,349	\$15,829,819	\$577,530	3.6%	\$68,516,567	\$69,314,631	(\$798,064)	-1.2%
12	11/21/2009	\$52,427,881	\$52,806,511	(\$378,630)	-0.7%	\$15,829,561	\$16,460,748	(\$631,187)	-3.8%	\$68,257,442	\$69,267,259	(\$1,009,817)	-1.5%
13	11/28/2009	\$50,519,477	\$52,199,741	(\$1,680,264)	-3.2%	\$15,710,447	\$17,397,576	(\$1,687,129)	-9.7%	\$66,229,924	\$69,597,317	(\$3,367,393)	-4.8%
14	12/5/2009	\$54,376,448	\$56,731,851	(\$2,355,403)	-4.2%	\$16,905,341	\$20,363,789	(\$3,458,449)	-17.0%	\$71,281,789	\$77,095,640	(\$5,813,852)	-7.5%
15	12/12/2009	\$52,654,632	\$54,109,617	(\$1,454,985)	-2.7%	\$17,726,695	\$22,952,228	(\$5,225,533)	-22.8%	\$70,381,327	\$77,061,845	(\$6,680,518)	-8.7%
16	12/19/2009	\$54,542,793	\$55,777,328	(\$1,234,535)	-2.2%	\$19,379,751	\$15,833,517	\$3,546,234	22.4%	\$73,922,544	\$71,610,845	\$2,311,699	3.2%
17	12/26/2009	\$56,482,042	\$57,597,885	(\$1,115,843)	-1.9%	\$17,582,779	\$15,851,771	\$1,731,009	10.9%	\$74,064,821	\$73,449,656	\$615,166	0.8%
18	1/2/2010	\$57,952,304	\$57,582,115	\$370,189	0.6%	\$16,542,885	\$16,900,028	(\$357,143)	-2.1%	\$74,495,189	\$74,482,143	\$13,047	0.0%
19	1/9/2010		\$54,250,945				\$16,203,220				\$70,454,165		
20	1/16/2010		\$51,625,339				\$15,701,605				\$67,326,944		
21	1/23/2010		\$52,789,573				\$15,897,473				\$68,687,046		
22	1/30/2010		\$55,453,471				\$16,908,272				\$72,361,743		
23	2/6/2010		\$62,247,711				\$18,354,314				\$80,602,025		
24	2/13/2010		\$60,509,056				\$19,218,078				\$79,727,134		
25	2/20/2010		\$59,194,623				\$21,098,199				\$80,292,822		
26	2/27/2010		\$58,857,216				\$24,116,924				\$82,974,140		
27	3/6/2010		\$59,552,257				\$23,995,136				\$83,547,393		
28	3/13/2010		\$53,754,084				\$18,769,831				\$72,523,915		
29	3/20/2010		\$52,581,107				\$15,903,038				\$68,484,145		
30	3/27/2010		\$52,560,961				\$16,094,933				\$68,655,894		
31	4/3/2010		\$56,249,759				\$17,357,002				\$73,606,761		
32	4/10/2010		\$54,440,987				\$17,660,600				\$72,101,587		
33	4/17/2010		\$52,755,834				\$18,469,585				\$71,225,419		
34	4/24/2010		\$51,450,968				\$20,216,898				\$71,667,866		
35	5/1/2010		\$52,327,090				\$23,520,573				\$75,847,663		
36	5/8/2010		\$53,214,412				\$16,241,207				\$69,455,619		
37	5/15/2010		\$50,785,227				\$15,990,544				\$66,775,771		
38	5/22/2010		\$56,567,077				\$15,874,447				\$72,441,524		
39	5/29/2010		\$55,359,239				\$16,040,196				\$71,399,435		
40	6/5/2010		\$60,250,125				\$16,301,599				\$76,551,724		
41	6/12/2010		\$54,979,517				\$16,143,215				\$71,122,732		
42	6/19/2010		\$53,109,433				\$16,357,924				\$69,467,357		

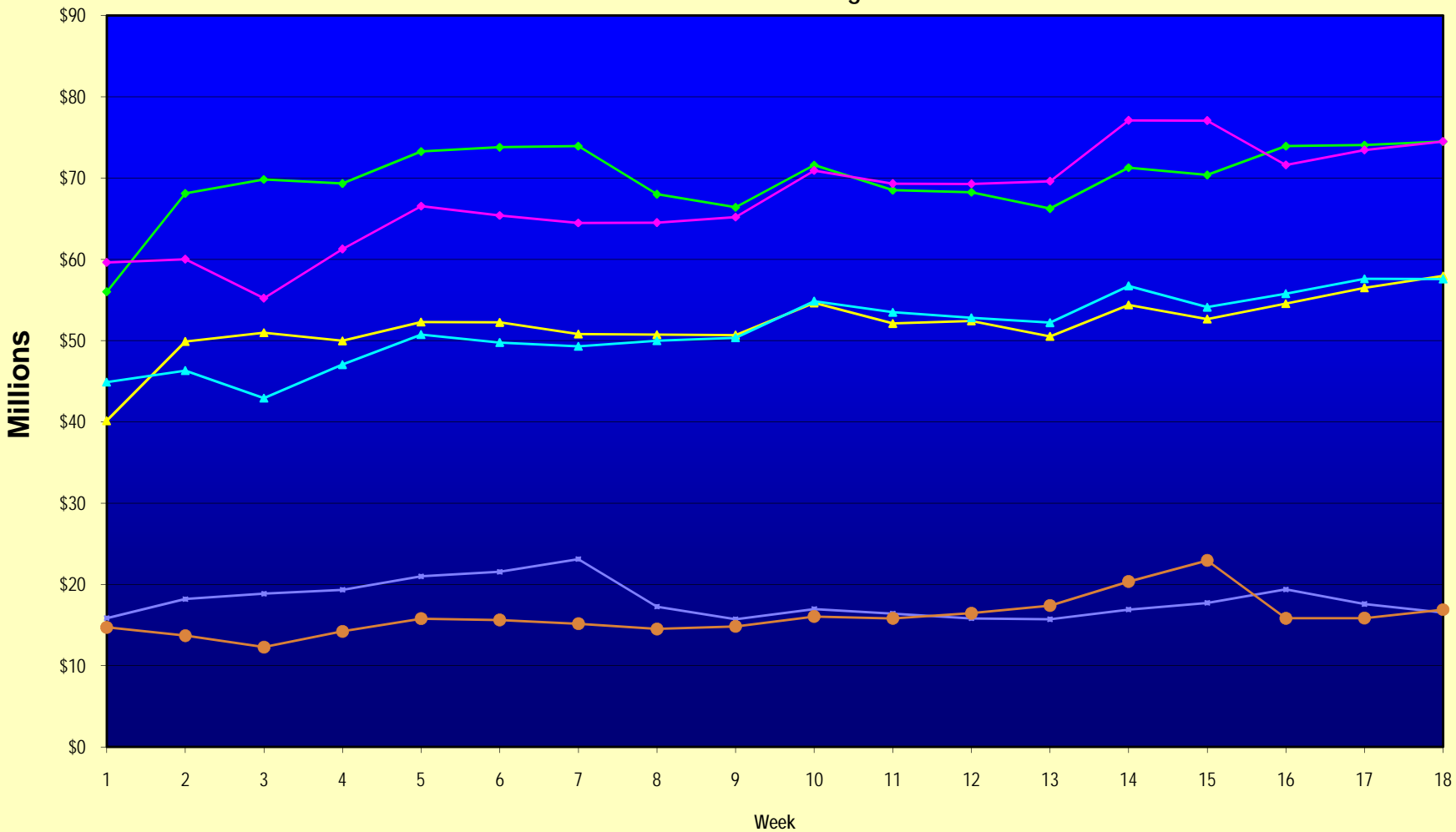
Note: Week 1 is not a full week of sales as this report is prepared on a Fiscal Year basis.

Texas Lottery Commission
Fiscal Year Over Year Change in Sales
Unaudited
FY 2010 Compared to FY 2009

Week	FY 2010 Week Ending	INSTANT TICKETS				ON-LINE GAMES				TOTAL SALES			
		FY 2010	FY 2009	Difference	% change - Cumulative Sales	FY 2010	FY 2009	Difference	% change - Cumulative Sales	FY 2010	FY 2009	Difference	% change - Cumulative Sales
43	6/26/2010		\$53,431,083				\$16,786,203				\$70,217,286		
44	7/3/2010		\$55,518,615				\$18,292,421				\$73,811,036		
45	7/10/2010		\$53,004,390				\$17,842,530				\$70,846,920		
46	7/17/2010		\$52,498,940				\$16,138,341				\$68,637,281		
47	7/24/2010		\$51,550,731				\$16,748,137				\$68,298,868		
48	7/31/2010		\$51,893,977				\$18,065,180				\$69,959,157		
49	8/7/2010		\$54,506,395				\$19,258,117				\$73,764,512		
50	8/14/2010		\$51,766,530				\$20,828,293				\$72,594,823		
51	8/21/2010		\$51,909,040				\$24,913,396				\$76,822,436		
52	8/28/2010		\$50,848,517				\$35,661,563				\$86,510,080		
53			\$13,288,367				\$3,085,816				\$16,374,183		
Total thru Current Week		\$933,435,118	\$926,449,701	\$6,985,417	0.8%	\$323,955,841	\$288,526,613	\$35,429,228	12.3%	\$1,257,390,959	\$1,214,976,314	\$42,414,645	3.5%
Fiscal Year Total		\$933,435,118	\$2,791,532,297			\$323,955,841	\$928,581,414			\$1,257,390,959	\$3,720,113,711		

** FY 2010 includes 5 days; FY 2009 includes 6 days

Texas Lottery Commission Fiscal Year Over Year Change in Sales



◆ Total Sales 2010
 ◆ Total Sales 2009
 ▲ Instant Tickets 2010
 ▲ Instant Tickets 2009
 ◆ On-Line Games 2010
 ● On-Line Games 2009

Note: Week 1 is not a full week of sales as this report is prepared on a Fiscal Year basis.

Texas Lottery Commission
Instant Tickets by Price Point
Sales, Prize Expense, Sales Contribution and Payout Percentage With Year Over Year Changes
Unaudited

Fiscal Year	Price Point	# of Active Games	FY Sales	% of Instant Ticket Sales	Year over Year Change in Sales	FY Prize Expense	Year over Year Change in Prize Expense	FY Sales Contribution	Year over Year Change in Contribution	Average Prize Payout %	Year over Year Change in Payout %
2009	\$1.00	34	80,562,974	8.7%		48,497,447		32,065,527		60.2%	0.2%
thru	\$2.00	29	157,518,210	17.0%		102,139,835		55,378,375		64.8%	-0.7%
1/3/2009	\$3.00	13	100,644,246	10.9%		66,164,307		34,479,939		65.7%	0.0%
	\$5.00	32	283,314,519	30.6%		192,690,423		90,624,096		68.0%	0.1%
	\$7.00	6	40,481,252	4.4%		27,533,741		12,947,511		68.0%	0.0%
	\$10.00	14	126,755,070	13.7%		88,713,257		38,041,813		70.0%	0.0%
	\$20.00	7	88,195,640	9.5%		63,300,034		24,895,606		71.8%	0.0%
	\$25.00	1	2,376,200	0.3%		1,728,322		647,878		72.7%	0.2%
	\$30.00	3	8,304,390	0.9%		6,017,711		2,286,679		72.5%	0.1%
	\$50.00	3	38,297,200	4.1%		27,687,796		10,609,404		72.3%	0.2%
Total		142	\$926,449,701			\$624,472,873		\$301,976,828		67.4%	-0.4%
2010	\$1.00	28	78,264,609	8.4%		47,041,661		31,222,948		60.1%	0.0%
thru	\$2.00	31	133,651,804	14.3%		88,302,172		45,349,632		66.1%	1.4%
1/2/2010	\$3.00	15	116,657,205	12.5%		76,697,863		39,959,342		65.7%	0.2%
	\$5.00	34	267,368,263	28.6%		181,626,315		85,741,948		67.9%	-0.1%
	\$7.00	5	38,470,187	4.1%		26,158,834		12,311,353		68.0%	0.0%
	\$10.00	12	133,577,750	14.3%		93,438,668		40,139,082		70.0%	0.0%
	\$20.00	5	140,816,200	15.1%		105,111,240		35,704,960		74.6%	2.1%
	\$25.00	0	-	0.0%		-		-		0.0%	-100.0%
	\$30.00	0	-	0.0%		-		-		0.0%	-100.0%
	\$50.00	2	24,629,100	2.6%		19,078,852		5,550,248		77.5%	3.9%
Total		132	\$933,435,118			\$637,455,605		\$295,979,513		68.3%	0.8%
Variance	\$1.00	-6	-2,298,365		-2.9%	-1,455,786	-3.0%	-842,579	-2.6%	-0.09%	
2010 to	\$2.00	2	-23,866,406		-15.2%	-13,837,664	-13.5%	-10,028,742	-18.1%	1.23%	
2009	\$3.00	2	16,012,959		15.9%	10,533,556	15.9%	5,479,403	15.9%	0.01%	
	\$5.00	2	-15,946,256		-5.6%	-11,064,109	-5.7%	-4,882,147	-5.4%	-0.08%	
	\$7.00	-1	-2,011,065		-5.0%	-1,374,907	-5.0%	-636,158	-4.9%	-0.02%	
	\$10.00	-2	6,822,680		5.4%	4,725,412	5.3%	2,097,268	5.5%	-0.04%	
	\$20.00	-2	52,620,560		59.7%	41,811,206	66.1%	10,809,354	43.4%	2.87%	
	\$25.00	-1	-2,376,200		-100.0%	-1,728,322	-100.0%	-647,878	-100.0%	-72.73%	
	\$30.00	-3	-8,304,390		-100.0%	-6,017,711	-100.0%	-2,286,679	-100.0%	-72.46%	
	\$50.00	-1	-13,668,100		-35.7%	-8,608,944	-31.1%	-5,059,156	-47.7%	5.17%	
Total		-10	\$6,985,417		0.8%	\$12,982,731	2.1%	-\$5,997,314	-2.0%	0.89%	

Texas Lottery Commission
Instant Tickets by Price Point
Sales, Prize Expense, Sales Contribution and Payout Percentage With Year Over Year Changes
 Unaudited

Notes - Instant Ticket Variances

		FY 2010		FY 2009		Difference
Sales	\$1 - \$7		\$634,412,068		\$662,521,201	-\$28,109,133
Prize Exp.	\$1 - \$7		\$419,826,845		\$437,025,753	-\$17,198,909
Sales Cont.	\$1 - \$7		\$214,585,223		\$225,495,448	-\$10,910,224
Prize Exp. %	\$1 - \$7		66.2%		66.0%	0.2%
		FY 2010		FY 2009		Difference
Sales	\$10 - \$50		\$299,023,050		\$263,928,500	\$35,094,550
Prize Exp.	\$10 - \$50		\$217,628,760		\$187,447,120	\$30,181,640
Sales Cont.	\$10 - \$50		\$81,394,290		\$76,481,380	\$4,912,910
Prize Exp. %	\$10 - \$50		72.8%		71.0%	1.8%
		FY 2010		FY 2009		Difference
Sales	Instant		\$933,435,118		\$926,449,701	\$6,985,417
Prize Exp.	Instant		\$637,455,605		\$624,472,873	\$12,982,731
Sales Cont.	Instant		\$295,979,513		\$301,976,828	-\$5,997,314
Prize Exp. %	Instant		68.3%		67.4%	0.9%

		FY 2010		FY 2009		Difference
Sales	\$1 - \$10		\$767,989,818		\$789,276,271	-\$21,286,453
Prize Exp.	\$1 - \$10		\$513,265,513		\$525,739,010	-\$12,473,497
Sales Cont.	\$1 - \$10		\$254,724,305		\$263,537,261	-\$8,812,956
Prize Exp. %	\$1 - \$10		66.8%		66.6%	0.2%
		FY 2010		FY 2009		Difference
Sales	\$20 - \$50		\$165,445,300		\$137,173,430	\$28,271,870
Prize Exp.	\$20 - \$50		\$124,190,092		\$98,733,863	\$25,456,228
Sales Cont.	\$20 - \$50		\$41,255,208		\$38,439,567	\$2,815,642
Prize Exp. %	\$20 - \$50		75.1%		72.0%	3.1%
		FY 2010		FY 2009		Difference
Sales	Instant		\$933,435,118		\$926,449,701	\$6,985,417
Prize Exp.	Instant		\$637,455,605		\$624,472,873	\$12,982,731
Sales Cont.	Instant		\$295,979,513		\$301,976,828	-\$5,997,314
Prize Exp. %	Instant		68.3%		67.4%	0.9%

Texas Lottery Commission
 Weekly Sales Summary
 & Comparison to Previous Week
 Unaudited

	Week Ending 01/02/2010		Week Ending 12/26/2009			
	<u>THIS WEEK</u>	% of Sales	<u>LAST WEEK</u>	% of Sales	<u>\$ change</u>	<u>% change</u>
Total Sales	<u>\$74,495,189</u>		<u>\$74,064,821</u>		<u>\$430,368</u>	0.58%
Instant Tickets	<u>\$57,952,304</u>	77.8%	<u>\$56,482,042</u>	76.3%	<u>\$1,470,262</u>	2.60%
Lotto Texas	\$4,605,833	6.2%	\$4,400,669	5.9%	\$205,164	4.66%
Pick 3	\$5,021,567	6.7%	\$4,950,248	6.7%	\$71,319	1.44%
Pick 3 Sum It Up	\$97,501	0.1%	\$92,930	0.1%	\$4,571	4.92%
Cash 5	\$1,319,224	1.8%	\$1,243,523	1.7%	\$75,701	6.09%
Texas Two Step	\$889,422	1.2%	\$767,273	1.0%	\$122,149	15.92%
Mega Millions	\$2,825,733	3.8%	\$4,188,741	5.7%	-\$1,363,008	-32.54%
Megaplier	\$676,790	0.9%	\$866,559	1.2%	-\$189,769	-21.90%
Daily 4	\$1,012,922	1.4%	\$982,221	1.3%	\$30,702	3.13%
Daily 4 Sum It Up	\$93,894	0.1%	\$90,617	0.1%	\$3,278	3.62%
Total Online Sales	<u>\$16,542,885</u>		<u>\$17,582,779</u>		<u>-\$1,039,894</u>	-5.91%

* Totals may not sum due to rounding.

Texas Lottery Commission
Weekly Sales Summary
Unaudited

INSTANT TICKETS
TOP TEN SELLING GAMES

For the Week Ending : 01/02/2010

Rank	Price Point	Game	Sales (Millions)
1	\$ 20	\$500,000,000 BLOCKBUSTER	\$ 5.504
2	\$ 5	CASINO ROYALE	\$ 3.639
3	\$ 10	JINGLE JUMBO BUCKS	\$ 2.794
4	\$ 5	MERRY MONEY	\$ 2.418
5	\$ 5	WINTER WINNINGS	\$ 2.085
6	\$ 5	FIVE STAR CASH	\$ 1.934
7	\$ 10	SET FOR LIFE	\$ 1.910
8	\$ 20	MERRY MILLIONAIRE	\$ 1.697
9	\$ 3	TRIPLER	\$ 1.672
10	\$ 3	BONUS CASHWORD	\$ 1.656

Texas Lottery Commission
Prize Payout Tracking Report
Unaudited

Through Week Ending 01/02/2010

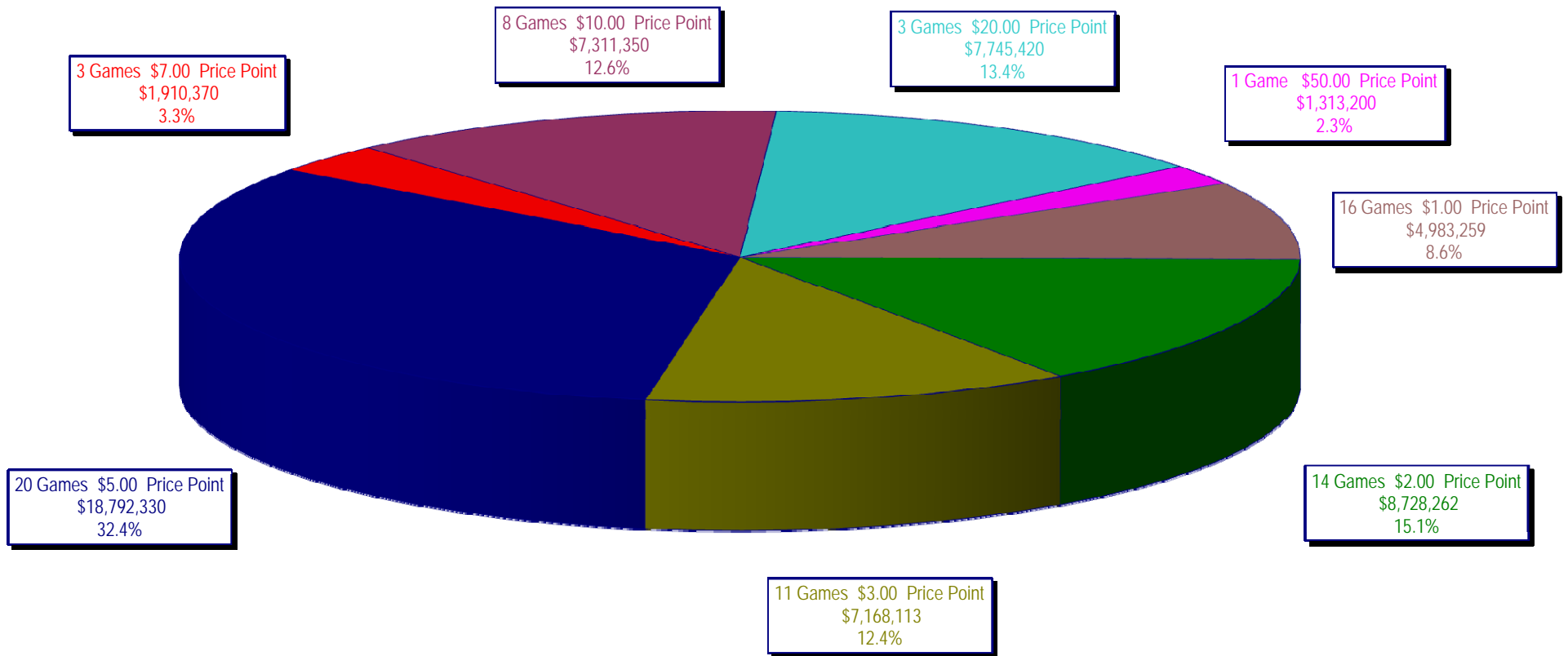
On-Line Sales

		FY Sales Through Week Ending 1/2/2010		FY Prize Expense Through Week Ending 1/2/2010	Actual* Prize Payout	Base Payout (Prize Pool)
Lotto	\$	93,655,485	\$	46,854,721	50.03%	50.00%
Pick 3		90,733,222		40,340,310	44.46%	50.00%
Pick 3 Sum It Up		1,812,843		814,798	44.95%	50.00%
Cash 5		22,875,597		12,402,676	54.22%	50.00%
Texas Two-Step		15,362,601		8,016,157	52.18%	50.00%
Mega Millions		65,576,042		33,022,692	50.36%	50.00%**
Megaplier		14,663,070		4,431,225	30.22%	N/A
Daily 4		17,579,753		8,475,125	48.21%	50.00%
Daily 4-Sum It Up		1,697,229		740,867	43.65%	50.00%
Totals	\$	323,955,841	\$	155,098,570	47.88%	

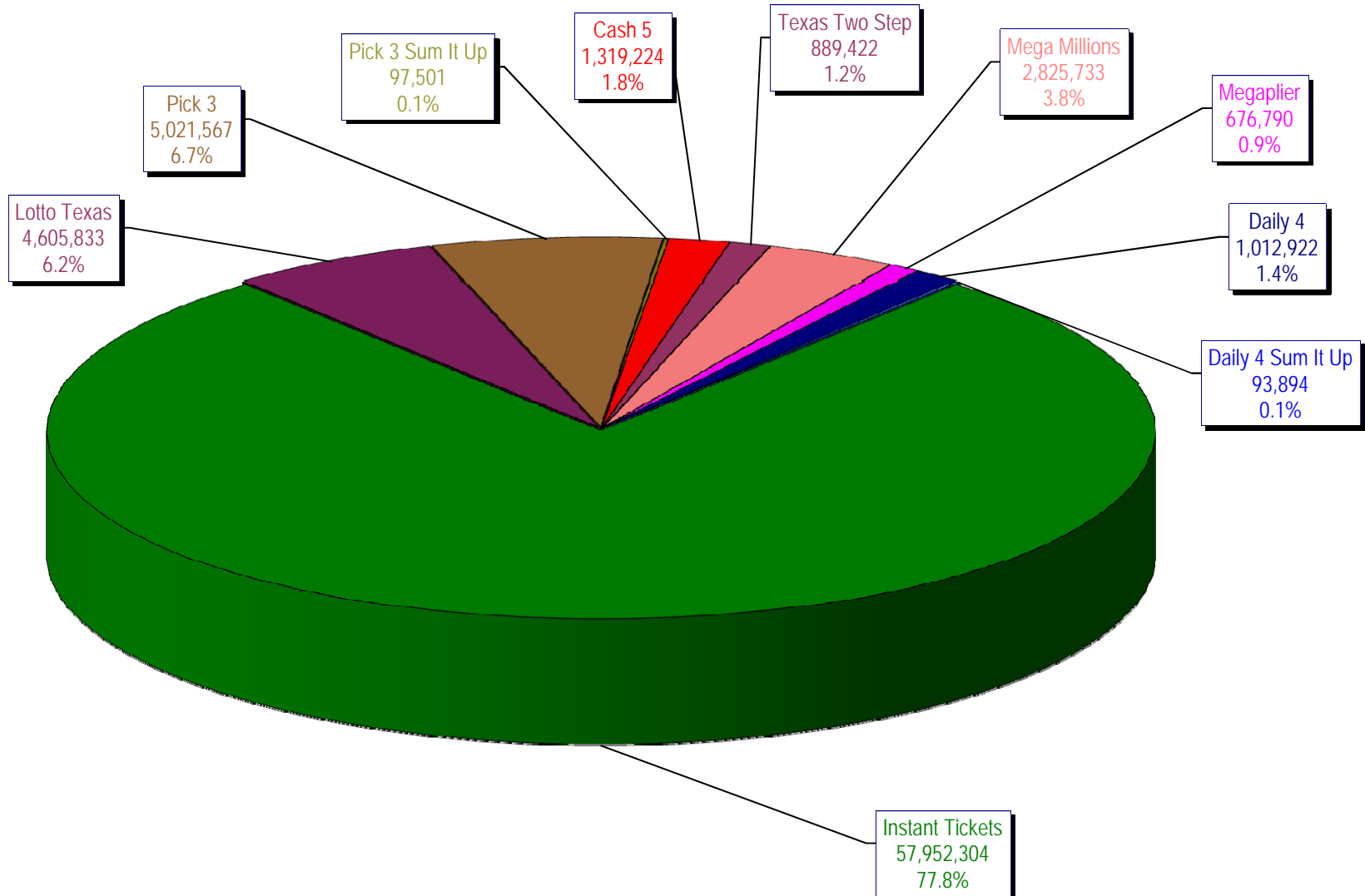
* Before Unclaimed Prizes

** Estimated; depends on # of guaranteed prizes won in Texas

Texas Lottery Commission
Instant Ticket Sales
For the Week Ending 01/02/2010
(Unaudited)



Texas Lottery Commission
All Game Sales
For the Week Ending 01/02/2010
(Unaudited)



Texas Lottery Commission - Weekly Sales Summary for FY 2010 (Unaudited)

Week Ended	Instant Games	New Games & Dates	Lotto Texas	Jackpot W S	Pick 3	Pick 3 Sum It Up	Cash 5	Texas Two Step	Jackpot M TH	Mega Millions	Jackpot T F	Megaplier	Daily 4	Daily 4 Sum It Up	Total	Per Cap.
9/5/2009	53,436,608.00	1183 (\$2,N) - 08/31/09	6,294,287.00	45 47	5,276,229.00	104,886.00	1,338,093.00	1,212,330.00	1.2 200	2,959,401.00	12 12	708,622.00	955,411.00	95,751.00	72,381,618.00	2.98
9/12/2009	49,896,100.00	1200 (\$1,N); 1201 (\$10,N) - 09/07/09	6,426,945.00	49 51	5,109,927.50	104,641.00	1,278,982.00	771,782.00	225 200	2,811,431.00	18 28	693,407.00	918,268.00	90,931.50	68,102,415.00	2.80
9/19/2009	50,971,937.00	1202 (\$3,N); 1185 (\$5,N) - 09/14/09	6,496,645.00	53 55	5,176,010.00	103,700.00	1,295,302.00	803,124.00	200 225	3,164,844.00	38 51	760,088.00	965,671.50	94,237.00	69,831,558.50	2.87
9/26/2009	49,975,243.00	1141 (\$1,N); 1259 (\$3,N) - 09/21/09	6,765,369.00	57 59	4,894,237.50	98,171.00	1,271,129.00	915,249.00	275 400	3,568,088.00	62 75	822,408.00	918,596.00	92,187.50	69,320,678.00	2.85
10/3/2009	52,283,569.00	1203 (\$2,N); 1172 (\$5,N) - 09/28/09	7,003,107.00	61 63	5,156,873.00	102,841.50	1,315,863.00	1,111,913.00	525 650	4,270,019.00	88 105	939,935.00	993,158.50	97,984.50	73,275,263.50	3.01
10/10/2009	52,238,261.00	1205 (\$1,N); 1263 (\$3,N) - 10/05/09	7,061,948.00	64 67	5,050,571.00	102,586.50	1,300,852.00	811,464.00	200 225	5,100,350.00	122 145	1,050,507.00	971,147.50	98,012.50	73,785,699.50	3.03
10/17/2009	50,806,599.00	1187 (\$2,N); 1193 (\$20,N) - 10/12/09	7,262,683.00	70 73	4,990,457.00	99,389.50	1,276,305.00	769,253.00	200 200	6,449,660.00	170 200	1,245,391.00	931,084.00	90,371.00	73,921,192.50	3.04
10/24/2009	50,731,592.00	1188 (\$3,N); 1189 (\$5,N) - 10/19/09	5,785,292.00	76 4	4,845,815.00	93,256.00	1,282,033.00	806,971.00	225 275	2,776,628.00	12 18	663,491.00	931,641.00	89,284.00	68,006,003.00	2.80
10/31/2009	50,684,853.00	1192 (\$10,N); 1186 (\$1,N) - 10/26/09	3,749,006.00	5 6	4,944,409.00	98,542.50	1,289,523.00	815,750.00	375 200	2,988,991.00	28 40	717,574.00	1,006,435.00	100,489.50	66,395,573.00	2.73
11/7/2009	54,633,928.00	1191 (\$7,N) - 11/02/09	3,982,319.00	7 8	5,265,020.50	105,180.50	1,339,215.00	853,140.00	225 275	3,458,403.00	50 63	795,045.00	1,058,564.00	104,724.00	71,595,539.00	2.94
11/14/2009	52,109,218.00	1218 (\$2,N); 1184 (\$5,N) - 11/09/09	3,985,493.00	9 10	5,172,602.50	104,782.00	1,274,573.00	829,607.00	375 200	3,210,618.00	77 12	752,365.00	983,342.50	93,966.00	68,516,567.00	2.82
11/21/2009	52,427,881.00	0	3,943,958.00	11 12	5,123,802.00	104,705.00	1,255,026.00	797,796.00	225 275	2,834,318.00	17 27	687,221.00	990,042.00	92,693.00	68,257,442.00	2.81
11/28/2009	50,519,477.00	1206 (\$1,N); 1190 (\$5,N); 1264 (\$1,N) - 11/23/09	3,966,034.00	13 14	5,043,210.00	102,783.50	1,202,798.00	693,774.00	200 225	2,932,809.00	37 47	691,194.00	985,336.50	92,508.00	66,229,924.00	2.72
12/5/2009	54,376,448.00	0	4,004,632.00	15 16	5,393,458.00	111,441.50	1,288,282.00	873,210.00	250 350	3,297,486.00	57 69	773,136.00	1,063,424.00	100,271.00	71,281,788.50	2.93
12/12/2009	52,654,632.00	1159 (\$2,N); 1182 (\$5,N) - 12/07/09 1196 (\$5,N) - 12/09/09	4,105,013.00	17 18	5,091,389.00	102,613.50	1,294,933.00	1,075,732.00	475 600	4,054,401.00	83 100	874,842.00	1,030,471.50	97,299.50	70,381,326.50	2.89
12/19/2009	54,542,793.00	1207 (\$1,N); 1208 (\$3,N) - 12/14/09	4,355,440.00	20 21	5,115,559.00	100,562.50	1,293,347.00	1,288,820.00	750 925	5,052,350.00	118 140	1,028,695.00	1,046,577.50	98,399.50	73,922,543.50	3.04
12/26/2009	56,482,042.00	1209 (\$2,N); 1168 (\$5,N) - 12/21/09	4,400,669.00	22 24	4,950,247.50	92,929.50	1,243,523.00	767,273.00	200 200	4,188,741.00	162 12	866,559.00	982,220.50	90,616.50	74,064,821.00	3.04
1/2/2010	57,952,304.00	0	4,605,833.00	26 27	5,021,566.50	97,500.50	1,319,224.00	889,422.00	225 275	2,825,733.00	16 27	676,790.00	1,012,922.00	93,894.00	74,495,189.00	3.06
weekly change	2.60%		4.66%		1.44%	4.92%	6.09%	15.92%		-32.54%		-21.90%	3.13%	3.62%	0.58%	
	SALES		SALES		SALES	SALES	SALES	SALES		SALES		SALES	SALES	SALES	SALES	% of Sales
Startup to date	37,205,553,417.00		10,573,269,032.00		3,674,330,979.50	14,213,918.00	2,212,779,737.00	493,150,532.00		1,207,106,641.45		280,231,357.00	106,629,963.50	15,451,055.50	55,990,850,604.95	100.0%
Calendar Year to date	2,807,112,976.00		231,940,959.00		281,526,066.00	143,861.50	69,646,502.00	51,925,179.00		222,190,553.95		48,132,414.00	50,096,902.50	5,279,885.50	3,767,995,299.45	100.0%
Fiscal Year to date 2010	933,435,118.00		93,655,485.00		90,733,222.00	1,812,842.50	22,875,597.00	15,362,601.00		65,576,042.00		14,663,070.00	17,579,752.50	1,697,228.50	1,257,390,958.50	100.0%