



WEEKLY SALES SUMMARY

Unaudited

Week Ending: 01/03/2009

Texas Lottery Commission
Fiscal Year to Date Sales Comparison
Unaudited

Through the week ending 01/03/2009(18 weeks)

Sales by Game	FY 2007 *	FY 2008 **	FY 2009	\$ Change		% Change	
				FY 2009 to FY 2007	FY 2009 to FY 2008	FY 2009 to FY 2007	FY 2009 to FY 2008
Instant	\$ 979,564,545	\$ 966,297,883	\$ 926,449,701	\$ -53,114,844	\$ -39,848,182	-5.4%	-4.1%
Lotto Texas	71,393,812	73,830,314	62,070,772	-9,323,040	-11,759,542	-13.1%	-15.9%
Pick 3	108,402,564	97,475,116	95,249,728	-13,152,837	-2,225,388	-12.1%	-2.3%
Pick 3 Sum It Up	-	1,551,542	2,015,852	2,015,852	464,310	-	-
Cash 5	30,531,794	26,881,085	24,224,747	-6,307,047	-2,656,338	-20.7%	-9.9%
Texas Two Step	19,687,521	14,445,745	15,309,419	-4,378,102	863,674	-22.2%	6.0%
Mega Millions	50,410,561	50,776,000	59,353,340	8,942,779	8,577,340	17.7%	16.9%
Megaplier	12,347,253	12,619,504	14,030,749	1,683,496	1,411,245	13.6%	11.2%
Daily 4	-	14,037,016	14,418,754	14,418,754	381,739	-	2.7%
Daily 4 Sum It Up	-	3,712,877	1,853,253	1,853,253	-1,859,624	-	-50.1%
Total	\$ 1,272,338,050	\$ 1,261,627,081	\$ 1,214,976,314	\$ -57,361,737	\$ -46,650,767	-4.5%	-3.7%

* 3 extra days in 2007 ** 2 extra days in 2008

Texas Lottery Commission
Fiscal Year Over Year Change in Sales
Unaudited
FY 2009 Compared to FY 2008

Week	FY 2009 Week Ending	INSTANT TICKETS				ON-LINE GAMES				TOTAL SALES			
		FY 2009	FY 2008	Difference	% change - Cumulative Sales	FY 2009	FY 2008	Difference	% change - Cumulative Sales	FY 2009	FY 2008	Difference	% change - Cumulative Sales
1	9/6/2008**	\$44,890,104	\$62,376,229	(\$17,486,125)	-28.0%	\$14,722,011	\$19,372,224	(\$4,650,213)	-24.0%	\$59,612,115	\$81,748,453	(\$22,136,338)	-27.1%
2	9/13/2008	\$46,309,551	\$52,458,866	(\$6,149,315)	-20.6%	\$13,704,860	\$16,926,163	(\$3,221,303)	-21.7%	\$60,014,411	\$69,385,029	(\$9,370,618)	-20.8%
3	9/20/2008	\$42,923,171	\$49,998,934	(\$7,075,763)	-18.6%	\$12,291,263	\$15,792,283	(\$3,501,020)	-21.8%	\$55,214,434	\$65,791,217	(\$10,576,783)	-19.4%
4	9/27/2008	\$47,042,801	\$49,894,175	(\$2,851,374)	-15.6%	\$14,222,339	\$14,800,514	(\$578,175)	-17.9%	\$61,265,140	\$64,694,689	(\$3,429,549)	-16.2%
5	10/4/2008	\$50,747,162	\$53,486,863	(\$2,739,701)	-13.5%	\$15,784,472	\$16,618,430	(\$833,958)	-15.3%	\$66,531,634	\$70,105,293	(\$3,573,659)	-14.0%
6	10/11/2008	\$49,763,789	\$50,918,020	(\$1,154,231)	-11.7%	\$15,622,498	\$15,601,410	\$21,088	-12.9%	\$65,386,287	\$66,519,430	(\$1,133,143)	-12.0%
7	10/18/2008	\$49,299,053	\$50,532,253	(\$1,233,200)	-10.5%	\$15,167,940	\$15,682,666	(\$514,726)	-11.6%	\$64,466,993	\$66,214,919	(\$1,747,926)	-10.7%
8	10/25/2008	\$49,977,581	\$50,347,450	(\$369,869)	-9.3%	\$14,525,843	\$15,586,516	(\$1,060,673)	-11.0%	\$64,503,424	\$65,933,966	(\$1,430,542)	-9.7%
9	11/1/2008	\$50,346,542	\$53,953,733	(\$3,607,191)	-9.0%	\$14,838,845	\$16,775,983	(\$1,937,139)	-11.1%	\$65,185,387	\$70,729,716	(\$5,544,330)	-9.5%
10	11/8/2008	\$54,860,087	\$53,635,090	\$1,224,997	-7.9%	\$16,057,069	\$15,912,791	\$144,278	-9.9%	\$70,917,156	\$69,547,881	\$1,369,275	-8.3%
11	11/15/2008	\$53,484,812	\$51,254,401	\$2,230,411	-6.8%	\$15,829,819	\$15,797,076	\$32,744	-9.0%	\$69,314,631	\$67,051,477	\$2,263,155	-7.3%
12	11/22/2008	\$52,806,511	\$50,897,817	\$1,908,694	-5.9%	\$16,460,748	\$15,801,720	\$659,028	-7.9%	\$69,267,259	\$66,699,537	\$2,567,722	-6.4%
13	11/29/2008	\$52,199,741	\$53,913,115	(\$1,713,374)	-5.7%	\$17,397,576	\$17,055,505	\$342,072	-7.1%	\$69,597,317	\$70,968,620	(\$1,371,303)	-6.0%
14	12/6/2008	\$56,731,851	\$55,702,697	\$1,029,154	-5.1%	\$20,363,789	\$17,900,717	\$2,463,073	-5.5%	\$77,095,640	\$73,603,414	\$3,492,227	-5.2%
15	12/13/2008	\$54,109,617	\$53,703,516	\$406,101	-4.7%	\$22,952,228	\$17,820,841	\$5,131,387	-3.0%	\$77,061,845	\$71,524,357	\$5,537,488	-4.3%
16	12/20/2008	\$55,777,328	\$57,592,769	(\$1,815,441)	-4.6%	\$15,833,517	\$17,436,233	(\$1,602,716)	-3.4%	\$71,610,845	\$75,029,002	(\$3,418,157)	-4.3%
17	12/27/2008	\$57,597,885	\$57,696,003	(\$98,118)	-4.3%	\$15,851,771	\$14,743,680	\$1,108,091	-2.9%	\$73,449,656	\$72,439,683	\$1,009,973	-4.0%
18	1/3/2009	\$57,582,115	\$57,935,952	(\$353,837)	-4.1%	\$16,900,028	\$15,704,450	\$1,195,578	-2.3%	\$74,482,143	\$73,640,402	\$841,741	-3.7%
19	1/10/2009		\$55,360,542				\$15,691,540				\$71,052,082		
20	1/17/2009		\$54,920,166				\$16,259,669				\$71,179,835		
21	1/24/2009		\$54,439,890				\$16,691,724				\$71,131,614		
22	1/31/2009		\$57,464,382				\$17,968,227				\$75,432,609		
23	2/7/2009		\$60,715,019				\$20,097,338				\$80,812,357		
24	2/14/2009		\$57,093,143				\$22,179,908				\$79,273,051		
25	2/21/2009		\$57,627,047				\$27,230,539				\$84,857,586		
26	2/28/2009		\$55,591,667				\$17,016,118				\$72,607,785		
27	3/7/2009		\$56,837,481				\$16,690,193				\$73,527,674		
28	3/14/2009		\$54,587,112				\$16,448,165				\$71,035,277		
29	3/21/2009		\$53,098,937				\$16,639,184				\$69,738,121		
30	3/28/2009		\$53,933,689				\$17,698,625				\$71,632,314		
31	4/4/2009		\$57,598,982				\$17,665,411				\$75,264,393		
32	4/11/2009		\$53,954,185				\$15,860,784				\$69,814,969		
33	4/18/2009		\$53,946,736				\$16,452,676				\$70,399,412		
34	4/25/2009		\$51,533,006				\$16,873,949				\$68,406,955		
35	5/2/2009		\$53,250,568				\$18,202,103				\$71,452,671		
36	5/9/2009		\$54,060,849				\$18,422,562				\$72,483,411		
37	5/16/2009		\$54,010,641				\$20,728,360				\$74,739,001		
38	5/23/2009		\$50,377,032				\$15,461,384				\$65,838,416		
39	5/30/2009		\$49,545,080				\$15,175,370				\$64,720,450		
40	6/6/2009		\$53,702,986				\$15,982,166				\$69,685,152		

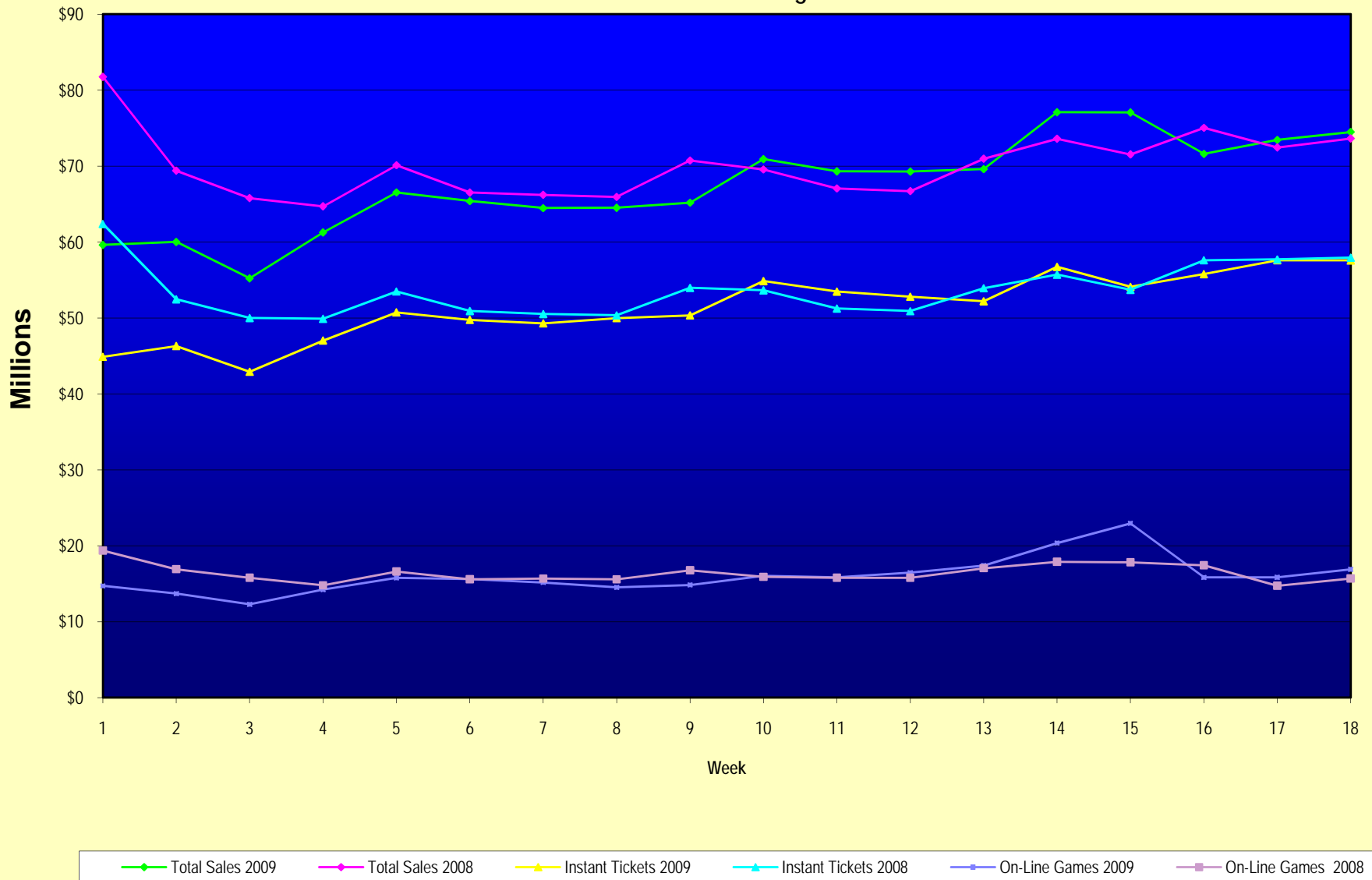
Note: Week 1 is not a full week of sales as this report is prepared on a Fiscal Year basis.

Texas Lottery Commission
Fiscal Year Over Year Change in Sales
Unaudited
FY 2009 Compared to FY 2008

Week	FY 2009 Week Ending	INSTANT TICKETS				ON-LINE GAMES				TOTAL SALES			
		FY 2009	FY 2008	Difference	% change - Cumulative Sales	FY 2009	FY 2008	Difference	% change - Cumulative Sales	FY 2009	FY 2008	Difference	% change - Cumulative Sales
41	6/13/2009		\$51,171,483				\$16,589,087				\$67,760,570		
42	6/20/2009		\$50,650,362				\$15,728,484				\$66,378,846		
43	6/27/2009		\$49,258,266				\$15,250,905				\$64,509,171		
44	7/4/2009		\$53,393,355				\$16,270,619				\$69,663,974		
45	7/11/2009		\$53,127,756				\$16,914,922				\$70,042,678		
46	7/18/2009		\$51,593,146				\$17,752,738				\$69,345,884		
47	7/25/2009		\$49,902,181				\$16,706,145				\$66,608,326		
48	8/1/2009		\$49,605,420				\$16,254,383				\$65,859,803		
49	8/8/2009		\$50,961,907				\$16,770,496				\$67,732,403		
50	8/15/2009		\$49,452,511				\$16,749,487				\$66,201,998		
51	8/22/2009		\$49,249,518				\$17,286,302				\$66,535,820		
52	8/29/2009		\$49,468,928				\$18,109,997				\$67,578,925		
53	9/5/2009		\$6,054,239				\$493,109				\$6,547,348		
Total thru Current Week		\$926,449,701	\$966,297,883	(\$39,848,182)	-4.1%	\$288,526,613	\$295,329,198	(\$6,802,585)	-2.3%	\$1,214,976,314	\$1,261,627,081	(\$46,650,767)	-3.7%
Fiscal Year Total		\$926,449,701	\$2,783,836,095			\$288,526,613	\$887,641,858			\$1,214,976,314	\$3,671,477,953		

** FY 2009 includes 6 days; FY 2008 includes 8 days
FY 2009 average daily sales are \$9,242,258. Two days at average daily sales are \$18,484,516.

Texas Lottery Commission Fiscal Year Over Year Change in Sales



Note: Week 1 is not a full week of sales as this report is prepared on a Fiscal Year basis.

Texas Lottery Commission
Instant Tickets by Price Point
Sales, Prize Expense, Sales Contribution and Payout Percentage With Year Over Year Changes
Unaudited

Fiscal Year	Price Point	# of Active Games	FY Sales	% of Instant Ticket Sales	Year over Year Change in Sales	FY Prize Expense	Year over Year Change in Prize Expense	FY Sales Contribution	Year over Year Change in Contribution	Average Prize Payout %	Year over Year Change in Payout %
2008	\$1.00	38	83,618,825	8.7%		50,242,521		33,376,304		60.1%	0.0%
thru	\$2.00	42	160,567,898	16.6%		104,389,935		56,177,963		65.0%	0.2%
1/5/2008	\$3.00	12	75,671,982	7.8%		49,826,046		25,845,936		65.8%	0.0%
	\$5.00	35	260,453,460	27.0%		176,659,492		83,793,968		67.8%	-0.2%
	\$7.00	10	67,482,597	7.0%		45,884,392		21,598,205		68.0%	0.0%
	\$10.00	16	149,035,986	15.4%		104,333,958		44,702,028		70.0%	-0.7%
	\$20.00	6	60,093,640	6.2%		43,207,218		16,886,422		71.9%	-0.1%
	\$25.00	2	36,986,025	3.8%		26,852,345		10,133,680		72.6%	0.3%
	\$30.00	3	11,890,320	1.2%		8,597,614		3,292,706		72.3%	0.0%
	\$50.00	2	60,497,150	6.3%		43,642,184		16,854,966		72.1%	0.0%
Total		166	\$966,297,883			\$653,635,706		\$312,662,177		67.6%	
2009	\$1.00	34	80,562,974	8.7%		48,497,447		32,065,527		60.2%	0.2%
thru	\$2.00	29	157,518,210	17.0%		102,139,835		55,378,375		64.8%	-0.7%
1/3/2009	\$3.00	13	100,644,246	10.9%		66,164,307		34,479,939		65.7%	0.0%
	\$5.00	32	283,314,519	30.6%		192,690,423		90,624,096		68.0%	0.1%
	\$7.00	6	40,481,252	4.4%		27,533,741		12,947,511		68.0%	0.0%
	\$10.00	14	126,755,070	13.7%		88,713,257		38,041,813		70.0%	0.0%
	\$20.00	7	88,195,640	9.5%		63,300,034		24,895,606		71.8%	0.0%
	\$25.00	1	2,376,200	0.3%		1,728,322		647,878		72.7%	0.2%
	\$30.00	3	8,304,390	0.9%		6,017,711		2,286,679		72.5%	0.1%
	\$50.00	3	38,297,200	4.1%		27,687,796		10,609,404		72.3%	0.2%
Total		142	\$926,449,701			\$624,472,873		\$301,976,828		67.4%	-0.2%
Variance	\$1.00	-4	-3,055,851		-3.7%	-1,745,074	-3.5%	-1,310,777	-3.9%	0.11%	
2009 to	\$2.00	-13	-3,049,688		-1.9%	-2,250,100	-2.2%	-799,588	-1.4%	-0.17%	
2008	\$3.00	1	24,972,264		33.0%	16,338,261	32.8%	8,634,003	33.4%	-0.10%	
	\$5.00	-3	22,861,059		8.8%	16,030,931	9.1%	6,830,128	8.2%	0.19%	
	\$7.00	-4	-27,001,345		-40.0%	-18,350,651	-40.0%	-8,650,694	-40.1%	0.02%	
	\$10.00	-2	-22,280,916		-15.0%	-15,620,701	-15.0%	-6,660,215	-14.9%	-0.02%	
	\$20.00	1	28,102,000		46.8%	20,092,815	46.5%	8,009,185	47.4%	-0.13%	
	\$25.00	-1	-34,609,825		-93.6%	-25,124,023	-93.6%	-9,485,802	-93.6%	0.13%	
	\$30.00	0	-3,585,930		-30.2%	-2,579,903	-30.0%	-1,006,027	-30.6%	0.16%	
	\$50.00	1	-22,199,950		-36.7%	-15,954,388	-36.6%	-6,245,562	-37.1%	0.16%	
Total		-24	-\$39,848,182		-4.1%	-\$29,162,832	-4.5%	-\$10,685,350	-3.4%	-0.23%	

Texas Lottery Commission
Instant Tickets by Price Point
Sales, Prize Expense, Sales Contribution and Payout Percentage With Year Over Year Changes
Unaudited

Notes - Instant Ticket Variances

		FY 2009		FY 2008		Difference
Sales	\$1 - \$7	\$662,521,201		\$647,794,762		\$14,726,439
Prize Exp.	\$1 - \$7	\$437,025,753		\$427,002,386		\$10,023,367
Sales Cont.	\$1 - \$7	\$225,495,448		\$220,792,376		\$4,703,072
Prize Exp. %	\$1 - \$7	66.0%		65.9%		0.0%
		FY 2009		FY 2008		Difference
Sales	\$10 - \$50	\$263,928,500		\$318,503,121		-\$54,574,621
Prize Exp.	\$10 - \$50	\$187,447,120		\$226,633,319		-\$39,186,199
Sales Cont.	\$10 - \$50	\$76,481,380		\$91,869,802		-\$15,388,422
Prize Exp. %	\$10 - \$50	71.0%		71.2%		-0.1%
		FY 2009		FY 2008		Difference
Sales	Instant	\$926,449,701		\$966,297,883		-\$39,848,182
Prize Exp.	Instant	\$624,472,873		\$653,635,706		-\$29,162,832
Sales Cont.	Instant	\$301,976,828		\$312,662,177		-\$10,685,350
Prize Exp. %	Instant	67.4%		67.6%		-0.2%

		FY 2009		FY 2008		Difference
Sales	\$1 - \$10	\$789,276,271		\$796,830,748		-\$7,554,477
Prize Exp.	\$1 - \$10	\$525,739,010		\$531,336,344		-\$5,597,334
Sales Cont.	\$1 - \$10	\$263,537,261		\$265,494,404		-\$1,957,143
Prize Exp. %	\$1 - \$10	66.6%		66.7%		-0.1%
		FY 2009		FY 2008		Difference
Sales	\$20 - \$50	\$137,173,430		\$169,467,135		-\$32,293,705
Prize Exp.	\$20 - \$50	\$98,733,863		\$122,299,361		-\$23,565,498
Sales Cont.	\$20 - \$50	\$38,439,567		\$47,167,774		-\$8,728,207
Prize Exp. %	\$20 - \$50	72.0%		72.2%		-0.2%
		FY 2009		FY 2008		Difference
Sales	Instant	\$926,449,701		\$966,297,883		-\$39,848,182
Prize Exp.	Instant	\$624,472,873		\$653,635,706		-\$29,162,832
Sales Cont.	Instant	\$301,976,828		\$312,662,177		-\$10,685,350
Prize Exp. %	Instant	67.4%		67.6%		-0.2%

Texas Lottery Commission
Weekly Sales Summary
& Comparison to Previous Week
 Unaudited

	Week Ending 01/03/2009		Week Ending 12/27/08			
	<u>THIS WEEK</u>	% of Sales	<u>LAST WEEK</u>	% of Sales	<u>\$ change</u>	<u>% change</u>
Total Sales	<u>\$74,482,143</u>		<u>\$73,449,656</u>		<u>\$1,032,487</u>	1.41%
Instant Tickets	<u>\$57,582,115</u>	77.3%	<u>\$57,597,885</u>	78.4%	<u>-\$15,770</u>	-0.03%
Lotto Texas	\$3,784,763	5.1%	\$3,582,169	4.9%	\$202,594	5.66%
Pick 3	\$5,690,221	7.6%	\$5,628,082	7.7%	\$62,139	1.10%
Pick 3 Sum It Up	\$120,520	0.2%	\$115,323	0.2%	\$5,197	4.51%
Cash 5	\$1,406,807	1.9%	\$1,340,590	1.8%	\$66,217	4.94%
Texas Two Step	\$934,000	1.3%	\$708,906	1.0%	\$225,094	31.75%
Mega Millions	\$3,190,457	4.3%	\$2,842,167	3.9%	\$348,290	12.25%
Megaplier	\$780,850	1.0%	\$706,042	1.0%	\$74,808	10.60%
Daily 4	\$885,674	1.2%	\$828,346	1.1%	\$57,328	6.92%
Daily 4 Sum It Up	<u>\$106,737</u>	0.1%	<u>\$100,146</u>	0.1%	<u>\$6,591</u>	6.58%
Total Online Sales	<u>\$16,900,028</u>		<u>\$15,851,771</u>		<u>\$1,048,257</u>	6.61%

* Totals may not sum due to rounding.

Texas Lottery Commission
Weekly Sales Summary
Unaudited

INSTANT TICKETS
TOP TEN SELLING GAMES

For the Week Ending : 01/03/2009

Rank	Price Point	Game	Sales (Millions)
1	\$ 5	GIANT JUMBO BUCKS II	\$ 3.266
2	\$ 10	MEGA JUMBO BUCKS II	\$ 2.886
3	\$ 5	FANTASTIC 5'S	\$ 2.528
4	\$ 20	TEXAS \$50 MILLION CLUB	\$ 2.437
5	\$ 7	SIZZLIN' RED 7'S	\$ 2.280
6	\$ 3	BONUS CASHWORD	\$ 2.271
7	\$ 5	MERRY MONEY	\$ 2.106
8	\$ 5	HOLIDAY TREASURES	\$ 2.077
9	\$ 10	SET FOR LIFE	\$ 2.009
10	\$ 10	JINGLE JUMBO BUCKS	\$ 1.966

Texas Lottery Commission
Prize Payout Tracking Report
Unaudited

Through Week Ending 01/03/2009

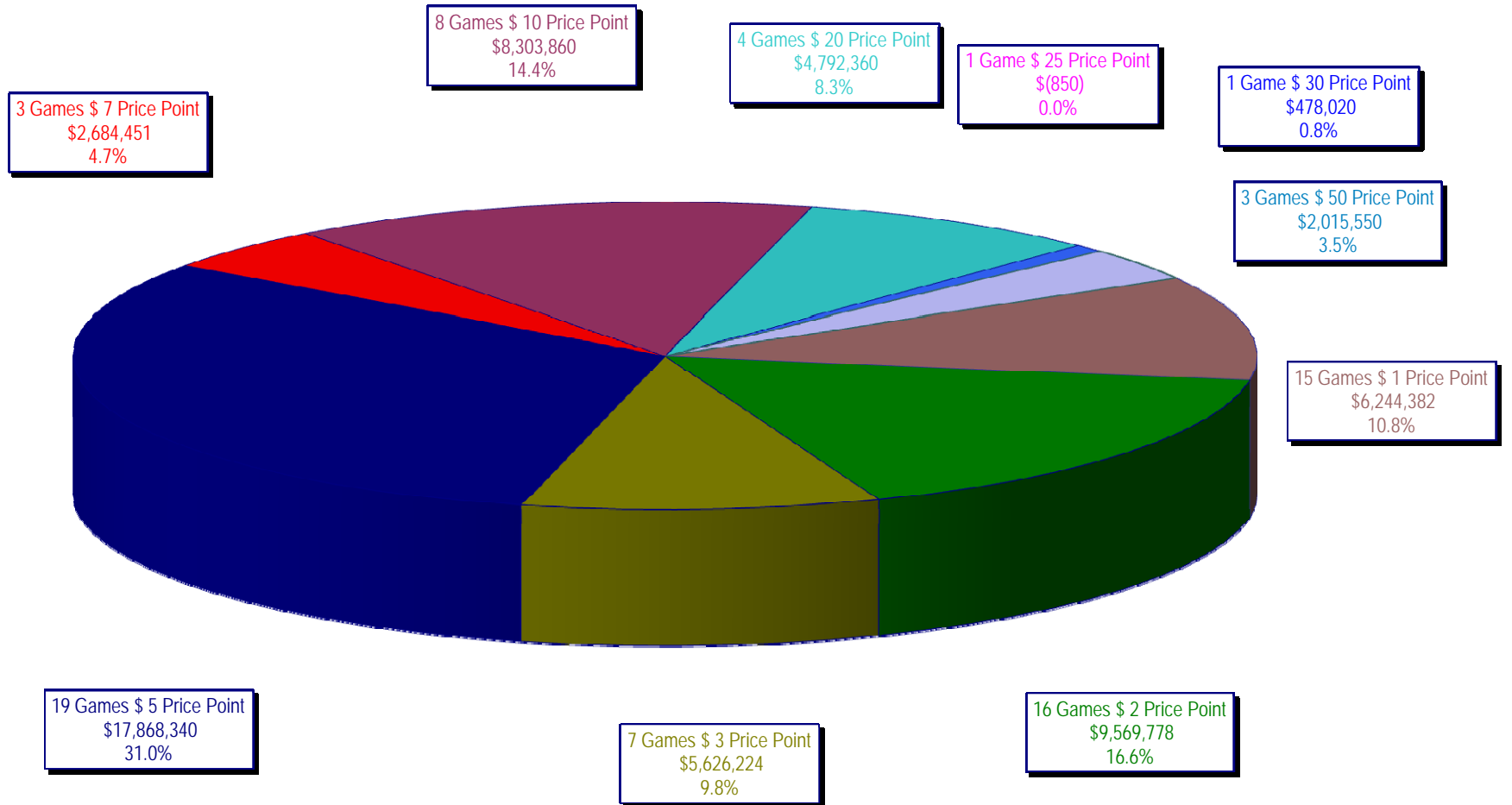
On-Line Sales

		FY Sales Through Week Ending 1/3/2009		FY Prize Expense Through Week Ending 1/3/2009	Actual* Prize Payout	Base Payout (Prize Pool)
Lotto	\$	62,070,772	\$	31,131,914	50.16%	50.00%
Pick 3		95,249,728		46,166,350	48.47%	50.00%
Pick 3 Sum It Up		2,015,852		917,252	45.50%	50.00%
Cash 5		24,224,747		12,211,662	50.41%	50.00%
Texas Two-Step		15,309,419		8,330,194	54.41%	50.00%
Mega Millions		59,353,340		28,748,939	48.44%	50.00%**
Megaplier		14,030,749		5,281,135	37.64%	N/A
Daily 4		14,418,754		6,315,975	43.80%	50.00%
Daily 4-Sum It Up		1,853,253		697,874	37.66%	50.00%
Totals	\$	288,526,613	\$	139,801,294	48.45%	

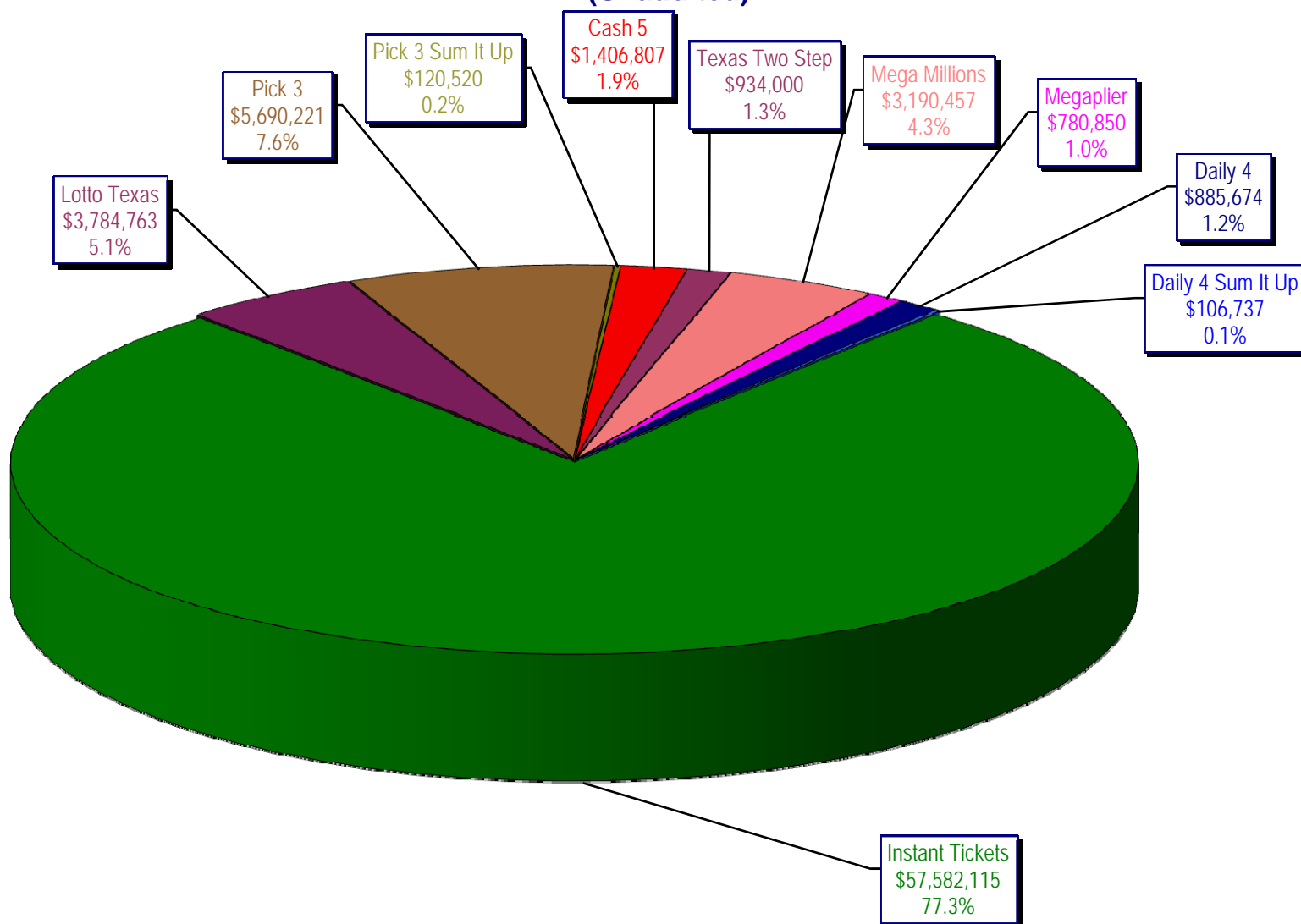
* Before Unclaimed Prizes

** Estimated; depends on # of guaranteed prizes won in Texas

Texas Lottery Commission
Instant Ticket Sales
For the Week Ending 01/03/2009
(Unaudited)



Texas Lottery Commission
All Game Sales
For the Week Ending 01/03/2009
(Unaudited)



Texas Lottery Commission - Weekly Sales Summary for FY 2008 (Unaudited)

Week Ended	Instant Games	New Games & Dates	Lotto Texas	Jackpot		Pick 3	Pick 3 Sum It Up	Cash 5	Texas Two Step	Jackpot		Mega Millions	Jackpot		Megaplier	Daily 4	Daily 4 Sum It Up	Total	Per Cap.
				W	S					M/T	TH/F		T	F					
9/6/2008	50,944,343.00	1108 (\$2,N), 1088 (\$3, N) - 9/01/08	3,378,718.00	5	6	5,436,414.00	122,123.00	1,396,622.00	890,346.00	350	450	2,445,490.00	12	16	649,090.00	786,482.50	109,834.00	66,159,462.50	2.77
9/13/2008	46,309,551.00	1109 (\$1,N), 1098 (\$5, N) - 9/08/08	3,020,089.00	7	8	4,705,585.50	105,899.00	1,279,412.00	856,199.00	600	200	2,327,214.00	24	12	617,672.00	696,633.00	96,156.50	60,014,411.00	2.51
9/20/2008	42,923,171.00	0	3,054,093.00	9	10	4,121,734.50	90,718.00	1,155,350.00	637,792.00	225	250	1,978,127.00	15	12	540,225.00	627,210.00	86,013.50	55,214,434.00	2.31
9/27/2008	47,042,801.00	1111 (\$2,N), 1099 (\$5, N) - 9/22/08	3,427,671.00	11	12	4,821,563.00	103,189.50	1,288,062.00	834,307.00	275	425	2,322,862.00	16	24	617,085.00	709,741.50	97,858.00	61,265,140.00	2.56
10/4/2008	50,747,162.00	1113 (\$1,N) 9/29/08	3,675,683.00	13	14	5,305,711.00	116,332.50	1,369,040.00	1,074,874.00	525	650	2,671,927.00	32	42	693,845.00	770,782.50	106,277.00	66,531,634.00	2.78
10/11/2008	49,763,789.00	0	3,732,365.00	15	16	5,287,094.00	114,665.50	1,370,334.00	1,305,250.00	800	975	2,306,070.00	12	16	622,120.00	778,204.00	106,395.00	65,386,286.50	2.74
10/18/2008	49,299,053.00	1117 (\$3,N), 1118 (\$20,N) - 10/13/08	3,780,438.00	17	18	5,149,258.00	109,530.00	1,355,601.00	741,849.00	200	200	2,500,644.00	23	32	652,198.00	776,366.00	102,056.00	64,466,993.00	2.70
10/25/2008	49,977,581.00	1119 (\$1,N), 1120 (\$5,N) - 10/20/08	3,210,762.00	4	5	5,099,671.00	107,104.50	1,339,079.00	789,649.00	225	275	2,456,965.00	42	12	641,206.00	778,434.00	102,972.50	64,503,424.00	2.70
11/1/2008	50,346,542.00	1121 (\$2,N), 1122 (\$10,N) - 10/27/08	3,325,641.00	6	7	5,234,124.00	109,983.00	1,339,046.00	946,035.00	375	475	2,347,596.00	16	23	626,235.00	805,572.00	104,612.50	65,185,386.50	2.73
11/8/2008	54,860,087.00	1123 (\$3,N), 1124 (\$7,N) - 11/03/08; 1103 (\$3,N) - 11/05/08; 1063 (\$3,N) - 11/07/08	3,290,417.00	4	5	5,686,701.00	118,495.00	1,397,985.00	1,158,101.00	625	750	2,729,302.50	31	42	692,662.00	871,230.00	112,175.50	70,917,156.00	2.97
11/15/2008	53,484,812.00	1125 (\$1, N), 1126 (\$5,N) - 11/10/08	3,336,934.00	6	7	5,459,984.00	112,884.00	1,366,024.00	766,955.00	200	225	3,102,251.00	51	62	749,736.00	830,957.00	104,094.00	69,314,631.00	2.90
11/22/2008	52,806,511.00	0	3,452,481.00	8	9	5,329,591.00	108,861.50	1,358,271.00	743,950.00	200	200	3,666,517.00	73	86	847,201.00	849,077.50	104,797.50	69,267,258.50	2.90
11/29/2008	52,199,741.00	1127 (\$2,N), 1128 (\$5,N) - 11/24/08	3,585,374.00	10	11	5,340,783.50	111,443.00	1,315,233.00	686,077.00	200	225	4,441,715.00	96	111	968,906.00	845,475.50	102,569.00	69,597,317.00	2.91
12/6/2008	56,731,851.00	0	3,794,991.00	12	13	5,752,593.00	121,663.50	1,416,446.00	780,328.00	250	200	6,238,355.00	128	146	1,270,214.00	881,841.50	107,357.00	77,095,640.00	3.23
12/13/2008	54,109,617.00	1129 (\$1, N) - 12/08/08	3,315,658.00	4	5	5,580,770.00	114,295.50	1,384,858.00	766,893.00	225	250	9,150,536.00	170	207	1,691,121.00	846,176.50	101,919.50	77,061,844.50	3.22
12/20/2008	55,777,328.00	1104 (\$2,N), 1105 (\$5,N), 1106 (\$10,N) - 12/15/08	3,432,340.00	6	7	5,741,120.00	116,075.50	1,401,805.00	741,945.00	200	200	2,736,234.00	12	16	687,875.00	871,579.50	104,543.00	71,610,845.00	3.00
12/27/2008	57,597,885.00	1077 (\$1,N), 1110 (\$1,N) - 12/22/08	3,582,169.00	8	4	5,628,081.50	115,323.00	1,340,590.00	708,906.00	225	250	2,842,167.00	22	29	706,042.00	828,346.00	100,146.00	73,449,655.50	3.07
1/3/2009	57,582,115.00	0	3,784,763.00	5	6	5,690,220.50	120,519.50	1,406,807.00	934,000.00	325	525	3,190,457.00	37	46	780,850.00	885,674.00	106,736.50	74,482,142.50	3.12
weekly change	-0.03%		5.66%			1.10%	4.51%	4.94%	31.75%			12.25%			10.60%	6.92%	6.58%	1.41%	
	SALES		SALES			SALES	SALES	SALES	SALES			SALES			SALES	SALES	SALES	SALES	% of Sales
Startup to date	34,407,035,703.00		10,341,167,819.00			3,393,968,680.00	8,501,681.50	2,143,380,757.00	441,575,137.00			985,491,934.50			232,238,783.00	56,635,725.50	10,192,056.50	52,228,322,249.00	100.0%
Calendar Year to date	25,132,028.00		1,798,527.00			2,809,181.00	58,996.00	642,303.00	416,000.00			1,535,031.00			370,968.00	428,067.00	51,249.00	33,242,350.00	100.0%
Fiscal Year to date 2009	926,449,701.00		62,070,772.00			95,249,727.50	2,015,851.50	24,224,747.00	15,309,419.00			59,353,339.50			14,030,749.00	14,418,754.00	1,853,253.00	1,214,976,313.50	100.0%