



WEEKLY SALES SUMMARY

Unaudited

Week Ending: 1/06/2018

Texas Lottery Commission
Fiscal Year to Date Sales Comparison
Unaudited

Through the Week Ending 1/06/2018 (19 Weeks)

Sales by Game	FY 2016 *	FY 2017 **	FY 2018	\$ Change		% Change	
				FY 2018 to FY 2016	FY 2018 to FY 2017	FY 2018 to FY 2016	FY 2018 to FY 2017
Scratch Tickets	\$ 1,266,861,809	\$ 1,315,491,848	\$ 1,451,996,749	\$ 185,134,940	\$ 136,504,901	14.6%	10.4%
Lotto Texas	46,705,350	39,147,633	40,683,277	-6,022,073	1,535,644	-12.9%	3.9%
Lotto Extra	7,886,720	7,506,960	8,753,074	866,354	1,246,114	11.0%	16.6%
Pick 3	90,705,502	87,093,419	87,308,852	-3,396,650	215,433	-3.7%	0.2%
Pick 3 Sum It Up	1,806,965	1,655,610	1,721,394	-85,571	65,784	-4.7%	4.0%
Cash Five	16,693,565	15,544,171	14,920,738	-1,772,827	-623,433	-10.6%	-4.0%
Texas Two Step	18,725,522	19,384,812	16,847,570	-1,877,952	-2,537,242	-10.0%	-13.1%
Mega Millions	48,660,568	37,417,672	70,310,794	21,650,226	32,893,122	44.5%	87.9%
Megaplier	12,001,725	10,245,908	12,226,212	224,487	1,980,304	1.9%	19.3%
MM Just the Jackpot	-	-	647,220	647,220	647,220	-	-
Daily 4	31,378,498	32,910,633	37,667,347	6,288,849	4,756,714	20.0%	14.5%
Daily 4 Sum It Up	1,623,961	1,747,679	2,058,216	434,255	310,538	26.7%	17.8%
Powerball	175,861,917	77,976,829	106,527,499	-69,334,418	28,550,670	-39.4%	36.6%
Power Play	18,828,040	11,011,212	15,361,110	-3,466,930	4,349,898	-18.4%	39.5%
All or Nothing	11,191,576	10,265,246	10,179,986	-1,011,590	-85,260	-9.0%	-0.8%
Texas Triple Chance	9,969,847	5,597,344	4,477,238	-5,492,609	-1,120,106	-55.1%	-20.0%
Total	\$ 1,758,901,564	\$ 1,672,996,975	\$ 1,881,687,274	\$ 122,785,711	\$ 208,690,300	7.0%	12.5%

* 3 extra days

** 1 extra day

Texas Lottery Commission
Fiscal Year to Date Cumulative Average Sales Comparison
Unaudited

Through the Week Ending 1/06/2018 (19 Weeks)

Sales by Game	FY 2016	FY 2017	FY 2018
Scratch Tickets	\$ 9,670,701	\$ 10,197,611	\$ 11,343,725
Lotto Texas	356,529	303,470	317,838
Lotto Extra	60,204	58,193	68,383
Pick 3	692,408	675,143	682,100
Pick 3 Sum It Up	13,794	12,834	13,448
Cash Five	127,432	120,497	116,568
Texas Two Step	142,943	150,270	131,622
Mega Millions	371,455	290,059	549,303
Megaplier	91,616	79,426	95,517
MM Just the Jackpot	-	- **	9,116
Daily 4	239,531	255,121	294,276
Daily 4 Sum It Up	12,397	13,548	16,080
Powerball	1,342,457	604,472	832,246
Power Play	143,725	85,358	120,009
All or Nothing	85,432	79,576	79,531
Texas Triple Chance	* 94,951	43,390	34,978
Total	\$ 13,445,575	\$ 12,968,969	\$ 14,704,741

thru 1/09/2016

thru 1/07/2017

thru 1/06/2018

131 days

129 days

128 days

* 105 days

** 71 days

Texas Lottery Commission
Fiscal Year Over Year Change in Sales
Unaudited
FY 2018 Compared to FY 2017

			SCRATCH TICKETS				DRAW GAMES				TOTAL SALES			
FY 2018			FY 2018	FY 2017	Difference	% change - Cumulative Sales	FY 2018	FY 2017	Difference	% change - Cumulative Sales	FY 2018	FY 2017	Difference	% change - Cumulative Sales
Week	Week Ending													
1	9/2/2017 *		\$23,058,926	\$32,980,266	(\$9,921,340)	-30.1%	\$6,902,847	\$10,218,656	(\$3,315,809)	-32.4%	\$29,961,773	\$43,198,922	(\$13,237,149)	-30.6%
2	9/9/2017		\$71,784,232	\$65,952,418	\$5,831,814	8.8%	\$18,779,001	\$19,635,377	(\$856,376)	-4.4%	\$90,563,233	\$85,587,795	\$4,975,438	5.8%
3	9/16/2017		\$72,828,393	\$66,196,270	\$6,632,123	10.0%	\$19,679,292	\$20,915,290	(\$1,235,999)	-5.9%	\$92,507,685	\$87,111,560	\$5,396,125	6.2%
4	9/23/2017		\$71,147,147	\$64,383,005	\$6,764,142	10.5%	\$18,601,742	\$17,451,165	\$1,150,577	6.6%	\$89,748,889	\$81,834,170	\$7,914,719	9.7%
5	9/30/2017		\$74,749,619	\$67,349,951	\$7,399,668	11.0%	\$18,436,682	\$17,519,852	\$916,830	5.2%	\$93,186,301	\$84,869,803	\$8,316,498	9.8%
6	10/7/2017		\$78,134,381	\$71,598,690	\$6,535,691	9.1%	\$19,297,281	\$18,211,107	\$1,086,174	6.0%	\$97,431,662	\$89,809,797	\$7,621,865	8.5%
7	10/14/2017		\$74,084,207	\$69,444,762	\$4,639,445	6.7%	\$19,185,335	\$18,075,261	\$1,110,074	6.1%	\$93,269,542	\$87,520,023	\$5,749,519	6.6%
8	10/21/2017		\$77,631,892	\$69,317,066	\$8,314,826	12.0%	\$19,573,636	\$18,422,336	\$1,151,300	6.2%	\$97,205,528	\$87,739,402	\$9,466,126	10.8%
9	10/28/2017		\$76,385,130	\$69,729,599	\$6,655,531	9.5%	\$18,788,634	\$18,535,248	\$253,386	1.4%	\$95,173,764	\$88,264,847	\$6,908,917	7.8%
10	11/4/2017		\$78,814,323	\$73,451,702	\$5,362,621	7.3%	\$19,564,629	\$20,151,939	(\$587,310)	-2.9%	\$98,378,952	\$93,603,641	\$4,775,312	5.1%
11	11/11/2017		\$78,572,697	\$70,998,320	\$7,574,377	10.7%	\$19,317,440	\$19,925,460	(\$608,020)	-3.1%	\$97,890,137	\$90,923,780	\$6,966,358	7.7%
12	11/18/2017		\$81,674,704	\$75,265,196	\$6,409,508	8.5%	\$19,938,001	\$21,424,637	(\$1,486,636)	-6.9%	\$101,612,705	\$96,689,833	\$4,922,872	5.1%
13	11/25/2017		\$84,916,870	\$68,983,157	\$15,933,713	23.1%	\$19,968,524	\$24,223,331	(\$4,254,808)	-17.6%	\$104,885,393	\$93,206,488	\$11,678,905	12.5%
14	12/2/2017		\$81,453,005	\$72,688,514	\$8,764,491	12.1%	\$21,685,175	\$17,653,328	\$4,031,847	22.8%	\$103,138,180	\$90,341,842	\$12,796,338	14.2%
15	12/9/2017		\$81,251,421	\$71,676,549	\$9,574,872	13.4%	\$21,277,106	\$18,150,590	\$3,126,516	17.2%	\$102,528,526	\$89,827,139	\$12,701,388	14.1%
16	12/16/2017		\$83,850,250	\$73,909,726	\$9,940,524	13.4%	\$23,199,797	\$19,814,333	\$3,385,464	17.1%	\$107,050,047	\$93,724,059	\$13,325,988	14.2%
17	12/23/2017		\$87,941,872	\$77,369,179	\$10,572,693	13.7%	\$27,161,624	\$19,276,415	\$7,885,209	40.9%	\$115,103,496	\$96,645,594	\$18,457,902	19.1%
18	12/30/2017		\$88,089,746	\$80,868,854	\$7,220,892	8.9%	\$36,811,359	\$19,289,161	\$17,522,199	90.8%	\$124,901,105	\$100,158,015	\$24,743,091	24.7%
19	1/6/2018		\$85,627,935	\$73,328,624	\$12,299,311	16.8%	\$61,522,424	\$18,611,644	\$42,910,781	230.6%	\$147,150,359	\$91,940,268	\$55,210,091	60.0%
20	1/13/2018			\$73,471,643				\$20,351,397				\$93,823,040		
21	1/20/2018			\$72,229,342				\$20,349,310				\$92,578,652		
22	1/27/2018			\$72,056,793				\$21,668,657				\$93,725,450		
23	2/3/2018			\$77,292,806				\$22,161,789				\$99,454,595		
24	2/10/2018			\$78,699,192				\$22,100,245				\$100,799,437		
25	2/17/2018			\$77,864,124				\$24,776,465				\$102,640,589		
26	2/24/2018			\$80,287,015				\$28,133,116				\$108,420,131		
27	3/3/2018			\$87,500,184				\$20,213,859				\$107,714,043		
28	3/10/2018			\$84,966,053				\$21,024,757				\$105,990,810		
29	3/17/2018			\$82,972,977				\$20,434,291				\$103,407,268		
30	3/24/2018			\$82,217,628				\$20,282,992				\$102,500,620		
31	3/31/2018			\$86,271,920				\$19,497,142				\$105,769,062		
32	4/7/2018			\$81,499,404				\$17,854,294				\$99,353,698		
33	4/14/2018			\$81,831,134				\$17,865,636				\$99,696,770		
34	4/21/2018			\$80,531,863				\$18,337,257				\$98,869,120		
35	4/28/2018			\$81,433,819				\$18,956,981				\$100,390,800		
36	5/5/2018			\$84,857,262				\$19,489,624				\$104,346,886		
37	5/12/2018			\$81,090,824				\$19,420,237				\$100,511,061		
38	5/19/2018			\$80,557,866				\$20,939,291				\$101,497,157		
39	5/26/2018			\$78,141,293				\$21,072,651				\$99,213,944		
40	6/2/2018			\$78,991,820				\$23,569,252				\$102,561,072		
41	6/9/2018			\$77,859,970				\$29,337,930				\$107,197,900		
42	6/16/2018			\$75,964,093				\$18,618,777				\$94,582,870		

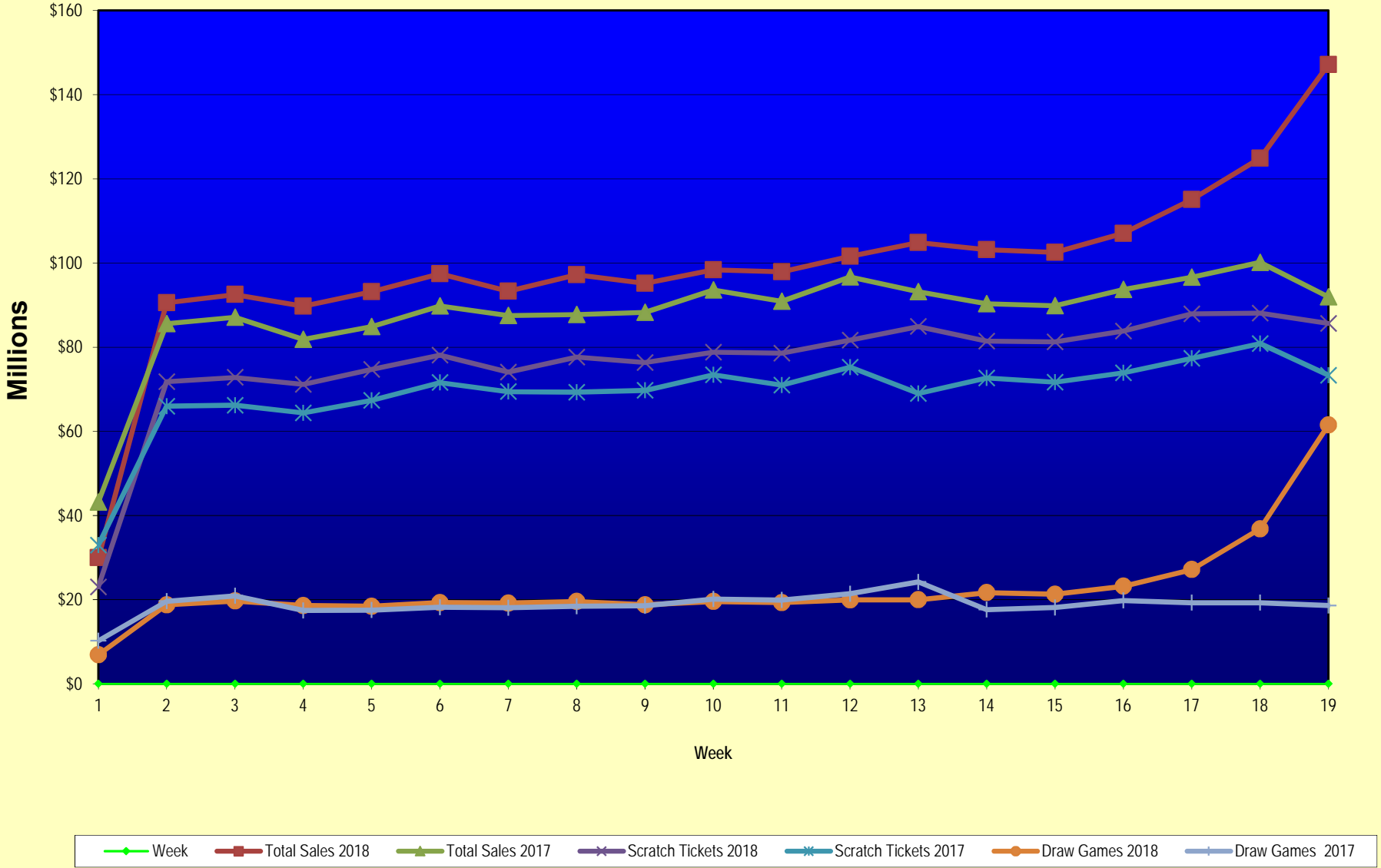
Texas Lottery Commission
Fiscal Year Over Year Change in Sales
Unaudited
FY 2018 Compared to FY 2017

			SCRATCH TICKETS				DRAW GAMES				TOTAL SALES			
FY 2018			FY 2018	FY 2017	Difference	% change - Cumulative Sales	FY 2018	FY 2017	Difference	% change - Cumulative Sales	FY 2018	FY 2017	Difference	% change - Cumulative Sales
Week	Week	Ending												
43	6/23/2018			\$75,379,863				\$18,464,310				\$93,844,173		
44	6/30/2018			\$76,450,854				\$19,685,004				\$96,135,858		
45	7/7/2018			\$75,420,516				\$20,817,697				\$96,238,213		
46	7/14/2018			\$74,068,426				\$21,553,240				\$95,621,666		
47	7/21/2018			\$75,926,884				\$21,909,933				\$97,836,817		
48	7/28/2018			\$68,526,927				\$22,791,762				\$91,318,689		
49	8/4/2018			\$74,104,794				\$27,396,555				\$101,501,349		
50	8/11/2018			\$73,356,820				\$37,340,879				\$110,697,699		
51	8/18/2018			\$74,114,510				\$42,787,014				\$116,901,524		
52	8/25/2018			\$70,061,982				\$55,854,516				\$125,916,498		
	8/31/2018 **			\$43,727,573				\$9,679,652				\$53,407,225		
Total thru Current Week			\$1,451,996,749	\$1,315,491,848	\$136,504,901	10.4%	\$429,690,526	\$357,505,127	\$72,185,399	20.2%	\$1,881,687,274	\$1,672,996,975	\$208,690,300	12.5%
Fiscal Year Total			\$1,451,996,749	\$3,935,220,022			\$429,690,526	\$1,142,241,630			\$1,881,687,274	\$5,077,461,652		

* FY 18 includes 2 days; FY 17 includes 3 days

** FY 18 includes 6 days; FY 17 includes 5 days

Texas Lottery Commission Fiscal Year Over Year Change in Sales



Note: Week 1 is not a full week of sales as this report is prepared on a Fiscal Year basis.

Texas Lottery Commission
Scratch Tickets by Price Point
Sales, Prize Expense, Sales Contribution and Payout Percentage With Year Over Year Changes
Unaudited

Fiscal Year	Price Point	# of Active Games	FY Sales	% of Scratch Ticket Sales	Year over Year Change in Sales	FY Prize Expense	Year over Year Change in Prize Expense	FY Sales Contribution	Year over Year Change in Contribution	Average Prize Payout %	Year over Year Change in Payout %
2017	\$1.00	18	52,043,604	4.0%		31,433,715		20,609,889		60.4%	0.3%
Through	\$2.00	23	112,012,708	8.5%		72,948,837		39,063,871		65.1%	-0.1%
1/7/2017	\$3.00	8	90,363,366	6.9%		59,565,591		30,797,775		65.9%	0.0%
	\$5.00	42	418,579,420	31.8%		284,413,696		134,165,724		67.9%	0.0%
	\$10.00	17	277,692,150	21.1%		195,830,448		81,861,702		70.5%	0.5%
	\$20.00	11	297,209,600	22.6%		222,706,419		74,503,181		74.9%	0.0%
	\$50.00	4	67,591,000	5.1%		52,594,164		14,996,836		77.8%	0.0%
Total		123	\$1,315,491,848			\$919,492,870		\$395,998,978		69.9%	0.5%
2018	\$1.00	18	54,194,810	3.7%		32,741,916		21,452,894		60.4%	0.3%
Through	\$2.00	18	101,749,310	7.0%		66,198,910		35,550,400		65.1%	-0.1%
1/6/2018	\$3.00	11	102,801,435	7.1%		67,823,393		34,978,042		66.0%	0.1%
	\$5.00	47	415,343,634	28.6%		282,385,316		132,958,318		68.0%	0.0%
	\$10.00	17	350,322,830	24.1%		245,433,884		104,888,946		70.1%	-0.3%
	\$20.00	15	315,234,580	21.7%		236,275,395		78,959,185		75.0%	0.0%
	\$50.00	4	112,350,150	7.7%		87,593,388		24,756,762		78.0%	0.1%
Total		130	\$1,451,996,749			\$1,018,452,202		\$433,544,547		70.1%	0.4%
Variance	\$1.00	0	2,151,206		4.1%	1,308,202	4.2%	843,004	4.1%	0.02%	
2018 to	\$2.00	-5	-10,263,398		-9.2%	-6,749,927	-9.3%	-3,513,471	-9.0%	-0.06%	
2017	\$3.00	3	12,438,069		13.8%	8,257,802	13.9%	4,180,267	13.6%	0.06%	
	\$5.00	5	-3,235,786		-0.8%	-2,028,381	-0.7%	-1,207,406	-0.9%	0.04%	
	\$10.00	0	72,630,680		26.2%	49,603,436	25.3%	23,027,244	28.1%	-0.46%	
	\$20.00	4	18,024,980		6.1%	13,568,976	6.1%	4,456,004	6.0%	0.02%	
	\$50.00	0	44,759,150		66.2%	34,999,224	66.5%	9,759,926	65.1%	0.15%	
Total		7	\$136,504,901		10.4%	\$98,959,332	10.8%	\$37,545,569	9.5%	0.24%	

Notes - Scratch Ticket Variances

Texas Lottery Commission
Scratch Tickets by Price Point
Sales, Prize Expense, Sales Contribution and Payout Percentage With Year Over Year Changes
Unaudited

			FY 2018		FY 2017	Difference
Sales	\$1 - \$5		\$674,089,189		\$672,999,098	\$1,090,091
Prize Exp.	\$1 - \$5		\$449,149,535		\$448,361,839	\$787,696
Sales Cont.	\$1 - \$5		\$224,939,654		\$224,637,259	\$302,395
Prize Exp. %	\$1 - \$5		66.6%		66.6%	0.0%
			FY 2018		FY 2017	Difference
Sales	\$10 - \$50		\$777,907,560		\$642,492,750	\$135,414,810
Prize Exp.	\$10 - \$50		\$569,302,667		\$471,131,031	\$98,171,636
Sales Cont.	\$10 - \$50		\$208,604,893		\$171,361,719	\$37,243,174
Prize Exp. %	\$10 - \$50		73.2%		73.3%	-0.1%
			FY 2018		FY 2017	Difference
Sales	Scratch		\$1,451,996,749		\$1,315,491,848	\$136,504,901
Prize Exp.	Scratch		\$1,018,452,202		\$919,492,870	\$98,959,332
Sales Cont.	Scratch		\$433,544,547		\$395,998,978	\$37,545,569
Prize Exp. %	Scratch		70.1%		69.9%	0.2%

			FY 2018		FY 2017	Difference
Sales	\$1 - \$10		\$1,024,412,019		\$950,691,248	\$73,720,771
Prize Exp.	\$1 - \$10		\$694,583,419		\$644,192,287	\$50,391,132
Sales Cont.	\$1 - \$10		\$329,828,600		\$306,498,961	\$23,329,639
Prize Exp. %	\$1 - \$10		67.8%		67.8%	0.0%
			FY 2018		FY 2017	Difference
Sales	\$20 - \$50		\$427,584,730		\$364,800,600	\$62,784,130
Prize Exp.	\$20 - \$50		\$323,868,783		\$275,300,583	\$48,568,200
Sales Cont.	\$20 - \$50		\$103,715,947		\$89,500,017	\$14,215,930
Prize Exp. %	\$20 - \$50		75.7%		75.5%	0.3%
			FY 2018		FY 2017	Difference
Sales	Scratch		\$1,451,996,749		\$1,315,491,848	\$136,504,901
Prize Exp.	Scratch		\$1,018,452,202		\$919,492,870	\$98,959,332
Sales Cont.	Scratch		\$433,544,547		\$395,998,978	\$37,545,569
Prize Exp. %	Scratch		70.1%		69.9%	0.2%

Texas Lottery Commission
Weekly Sales Summary
& Comparison to Previous Week
 Unaudited

	Week Ending 1/06/2018	% of Sales	Week Ending 12/30/2017	% of Sales	\$ change	% change
	<u>THIS WEEK</u>		<u>LAST WEEK</u>			
Total Sales	<u>\$147,150,359</u>		<u>\$124,901,105</u>		<u>\$22,249,254</u>	17.81%
Scratch Tickets	<u>\$85,627,935</u>	58.2%	<u>\$88,089,746</u>	70.5%	<u>-\$2,461,812</u>	-2.79%
Lotto	\$2,549,259	1.7%	\$2,360,842	1.9%	\$188,417	7.98%
Lotto Extra	\$569,992	0.4%	\$519,750	0.4%	\$50,242	9.67%
Pick 3	\$4,638,623	3.2%	\$4,652,815	3.7%	-\$14,193	-0.31%
Pick 3 Sum It Up	\$101,857	0.1%	\$94,254	0.1%	\$7,603	8.07%
Cash Five	\$819,523	0.6%	\$811,994	0.7%	\$7,529	0.93%
Texas Two Step	\$806,400	0.5%	\$1,034,373	0.8%	-\$227,973	-22.04%
Mega Millions	\$17,181,579	11.7%	\$8,764,544	7.0%	\$8,417,035	96.04%
Megaplier	\$2,125,075	1.4%	\$1,147,310	0.9%	\$977,765	85.22%
MM Just the Jackpot	\$99,750	0.1%	\$65,076	0.1%	\$34,674	53.28%
Daily 4	\$1,971,281	1.3%	\$2,060,790	1.6%	-\$89,509	-4.34%
Daily 4 Sum It Up	\$118,574	0.1%	\$119,090	0.1%	-\$516	-0.43%
Powerball	\$26,448,160	18.0%	\$12,711,198	10.2%	\$13,736,962	108.07%
Power Play	\$3,306,119	2.2%	\$1,676,130	1.3%	\$1,629,989	97.25%
All or Nothing	\$536,082	0.4%	\$555,378	0.4%	-\$19,296	-3.47%
Texas Triple Chance	<u>\$250,152</u>	0.2%	<u>\$237,816</u>	0.2%	<u>\$12,336</u>	5.19%
Total Draw Game Sales	<u>\$61,522,424</u>		<u>\$36,811,359</u>		<u>\$24,711,065</u>	67.13%

* Totals may not sum due to rounding.

Texas Lottery Commission
Weekly Sales Summary
Unaudited

SCRATCH TICKETS
TOP TEN SELLING GAMES

For the week ending: 1/06/2018

Rank	Price Point	Game	Sales (Millions)
1	\$ 20	MEGA 7'S	\$ 4.498
2	\$ 5	LUCKY 7'S	\$ 4.177
3	\$ 20	\$1,000,000 BIG MONEY	\$ 3.986
4	\$ 10	MEGA LOTERIA	\$ 3.882
5	\$ 10	\$50 OR \$100!	\$ 3.662
6	\$ 50	TEXAS LOTTERY PLATINUM	\$ 3.317
7	\$ 5	\$500 FRENZY	\$ 2.418
8	\$ 10	SUPER 7'S	\$ 2.388
9	\$ 20	INSTANT MILLIONAIRE	\$ 2.366
10	\$ 20	TEXAS LOTTERY GOLD	\$ 2.364

Texas Lottery Commission
Prize Payout Tracking Report
Unaudited

Through the week ending: 1/06/2018

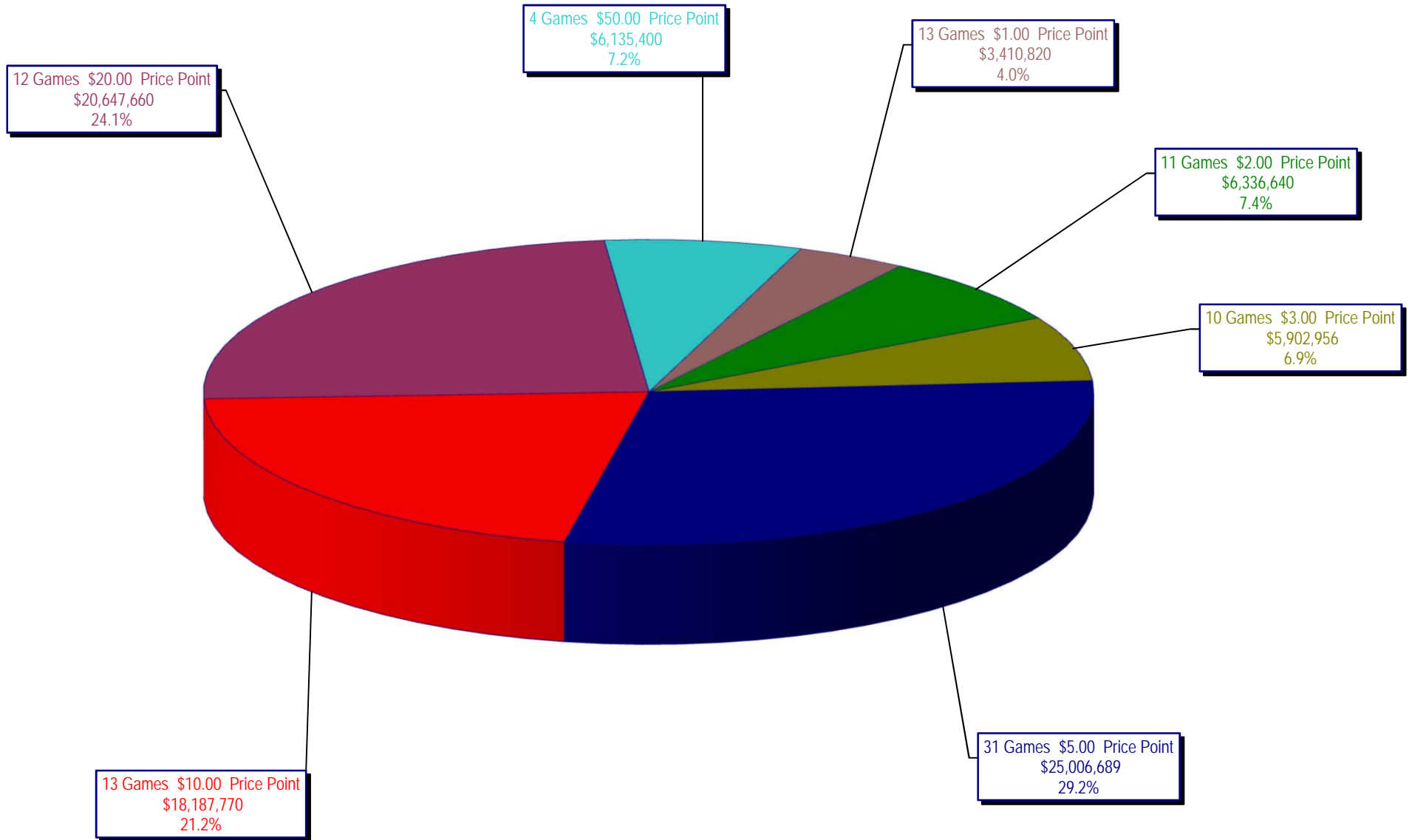
Draw Game Sales

		FY Sales Through Week Ending 1/6/2018		FY Prize Expense Through Week Ending 1/6/2018	Actual* Prize Payout	Base Payout (Prize Pool)
Lotto	\$	40,683,277	\$	25,940,111	63.76%	50.00%
Lotto Extra		8,753,074		4,954,094	56.60%	53.70%
Pick 3		87,308,852		40,368,040	46.24%	50.00%
Pick 3 Sum It Up		1,721,394		798,234	46.37%	50.00%
Cash Five		14,920,738		7,460,434	50.00%	50.00%
Texas Two Step		16,847,570		8,443,211	50.12%	50.00%
Mega Millions		70,310,794		36,707,756	52.21%	50.00%**
Megaplier		12,226,212		6,256,316	51.17%	N/A
MM Just the Jackpot		647,220		317,515	49.06%	50.00%**
Daily 4		37,667,347		22,418,375	59.52%	50.00%
Daily 4 Sum It Up		2,058,216		808,872	39.30%	50.00%
Powerball		106,527,499		53,347,462	50.08%	50.00%**
Power Play		15,361,110		7,695,504	50.10%	N/A
All or Nothing		10,179,986		5,974,778	58.69%	55.98%
Texas Triple Chance		4,477,238		2,240,121	50.03%	54.42%
Totals	\$	429,690,526	\$	223,730,822	52.07%	

* Before Unclaimed Prizes

**Estimated; depends on # of guaranteed prizes won in Texas

Texas Lottery Commission
Scratch Ticket Sales
For the week ending 1/06/2018
(Unaudited)



Texas Lottery Commission
All Game Sales
 For the week ending 1/06/2018
 (Unaudited)

