



WEEKLY SALES SUMMARY

Unaudited

Week Ending: 1/16/2021

**Texas Lottery Commission
Fiscal Year to Date Sales Comparison
Unaudited**

Through the Week Ending: 1/16/2021 (20 weeks)

Sales by Game	FY 2019 *	FY 2020 **	FY 2021	\$ Change		% Change	
				FY 2021 to FY 2019	FY 2021 to FY 2020	FY 2021 to FY 2019	FY 2021 to FY 2020
Scratch Tickets	\$ 1,798,199,605	\$ 1,892,574,904	\$ 2,285,505,701	\$ 487,306,096	\$ 392,930,797	27.1%	20.8%
Lotto Texas	42,101,285	42,259,270	58,703,093	16,601,808	16,443,823	39.4%	38.9%
Lotto Extra	10,115,243	10,976,595	16,805,754	6,690,511	5,829,159	66.1%	53.1%
Pick 3	95,195,887	91,528,947	103,564,656	8,368,769	12,035,709	8.8%	13.1%
Pick 3 Sum It Up	1,886,273	-	-	-1,886,273	-	-100.0%	-
Pick 3 Fireball	-	6,534,322	8,720,762	8,720,762	2,186,440	-	33.5%
Cash Five	18,288,848	17,203,304	19,050,239	761,391	1,846,935	4.2%	10.7%
Texas Two Step	22,569,196	22,834,456	23,305,492	736,296	471,036	3.3%	2.1%
Mega Millions	222,020,044	79,421,109	131,040,440	-90,979,604	51,619,331	-41.0%	65.0%
Megaplier	30,789,761	13,224,249	21,593,817	-9,195,944	8,369,568	-29.9%	63.3%
MM Just the Jackpot	987,692	323,328	547,152	-440,540	223,824	-44.6%	69.2%
Daily 4	43,018,841	42,796,689	44,757,781	1,738,941	1,961,093	4.0%	4.6%
Daily 4 Sum It Up	2,337,105	-	-	-2,337,105	-	-100.0%	-
Daily 4 Fireball	-	5,724,548	6,968,067	6,968,067	1,243,519	-	21.7%
Powerball	121,920,615	75,471,568	123,823,273	1,902,658	48,351,705	1.6%	64.1%
Power Play	18,471,767	12,754,261	20,709,828	2,238,061	7,955,567	12.1%	62.4%
All or Nothing	11,612,040	12,994,805	15,317,094	3,705,054	2,322,289	31.9%	17.9%
Total	\$ 2,439,514,201	\$ 2,326,622,354	\$ 2,880,413,148	\$ 440,898,947	\$ 553,790,794	18.1%	23.8%

* 3 extra days

** 2 extra days

Texas Lottery Commission
Fiscal Year Over Year Change in Sales
Unaudited
FY 2021 Compared to FY 2020

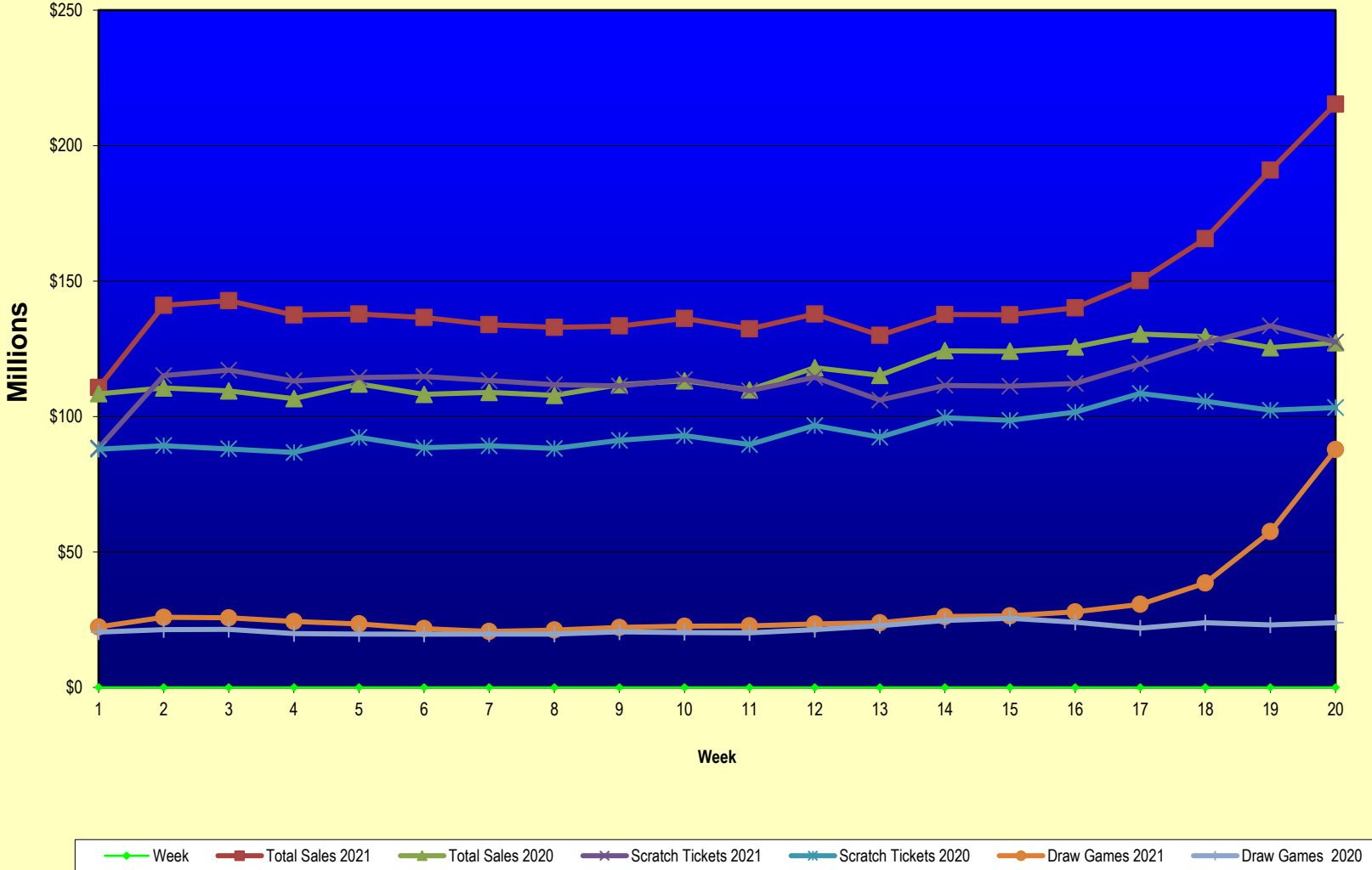
		SCRATCH TICKETS				DRAW GAMES				TOTAL SALES			
FY 2021		FY 2021	FY 2020	Difference	% change - Cumulative Sales	FY 2021	FY 2020	Difference	% change - Cumulative Sales	FY 2021	FY 2020	Difference	% change - Cumulative Sales
Week	Week Ending												
1	9/5/2020*	\$88,381,162	\$87,955,988	\$425,174	0.5%	\$22,327,441	\$20,447,416	\$1,880,026	9.2%	\$110,708,603	\$108,403,404	\$2,305,200	2.1%
2	9/12/2020	\$115,145,117	\$89,240,373	\$25,904,744	29.0%	\$25,865,986	\$21,301,605	\$4,564,381	21.4%	\$141,011,103	\$110,541,978	\$30,469,125	27.6%
3	9/19/2020	\$117,098,316	\$88,068,469	\$29,029,847	33.0%	\$25,689,861	\$21,426,167	\$4,263,694	19.9%	\$142,788,177	\$109,494,636	\$33,293,541	30.4%
4	9/26/2020	\$113,153,550	\$86,745,066	\$26,408,484	30.4%	\$24,320,273	\$19,862,967	\$4,457,307	22.4%	\$137,473,823	\$106,608,033	\$30,865,791	29.0%
5	10/3/2020	\$114,375,276	\$92,284,132	\$22,091,144	23.9%	\$23,460,330	\$19,717,594	\$3,742,737	19.0%	\$137,835,606	\$112,001,726	\$25,833,881	23.1%
6	10/10/2020	\$114,802,883	\$88,490,099	\$26,312,784	29.7%	\$21,716,732	\$19,667,924	\$2,048,809	10.4%	\$136,519,615	\$108,158,023	\$28,361,593	26.2%
7	10/17/2020	\$113,280,669	\$89,190,486	\$24,090,183	27.0%	\$20,664,725	\$19,704,335	\$960,390	4.9%	\$133,945,394	\$108,894,821	\$25,050,573	23.0%
8	10/24/2020	\$111,745,204	\$88,173,783	\$23,571,421	26.7%	\$21,165,208	\$19,681,792	\$1,483,416	7.5%	\$132,910,412	\$107,855,575	\$25,054,837	23.2%
9	10/31/2020	\$111,272,152	\$91,201,316	\$20,070,836	22.0%	\$22,136,334	\$20,509,492	\$1,626,843	7.9%	\$133,408,486	\$111,710,808	\$21,697,679	19.4%
10	11/7/2020	\$113,620,007	\$92,978,873	\$20,641,134	22.2%	\$22,606,708	\$20,252,459	\$2,354,250	11.6%	\$136,226,715	\$113,231,332	\$22,995,384	20.3%
11	11/14/2020	\$109,577,081	\$89,685,517	\$19,891,564	22.2%	\$22,749,434	\$20,172,714	\$2,576,720	12.8%	\$132,326,515	\$109,858,231	\$22,468,284	20.5%
12	11/21/2020	\$114,446,332	\$96,650,014	\$17,796,318	18.4%	\$23,397,417	\$21,373,038	\$2,024,380	9.5%	\$137,843,749	\$118,023,052	\$19,820,698	16.8%
13	11/28/2020	\$106,113,701	\$92,381,438	\$13,732,263	14.9%	\$23,890,237	\$22,801,917	\$1,088,320	4.8%	\$130,003,938	\$115,183,355	\$14,820,583	12.9%
14	12/5/2020	\$111,508,837	\$99,556,606	\$11,952,231	12.0%	\$26,132,516	\$24,727,128	\$1,405,389	5.7%	\$137,641,353	\$124,283,734	\$13,357,620	10.7%
15	12/12/2020	\$111,156,442	\$98,579,669	\$12,576,773	12.8%	\$26,432,394	\$25,527,202	\$905,192	3.5%	\$137,588,836	\$124,106,871	\$13,481,965	10.9%
16	12/19/2020	\$112,212,350	\$101,628,893	\$10,583,457	10.4%	\$27,895,989	\$24,068,057	\$3,827,932	15.9%	\$140,108,339	\$125,696,950	\$14,411,389	11.5%
17	12/26/2020	\$119,456,586	\$108,533,892	\$10,922,694	10.1%	\$30,653,848	\$21,912,659	\$8,741,189	39.9%	\$150,110,434	\$130,446,551	\$19,663,883	15.1%
18	1/2/2021	\$127,122,270	\$105,603,978	\$21,518,292	20.4%	\$38,528,413	\$23,890,650	\$14,637,764	61.3%	\$165,650,683	\$129,494,628	\$36,156,056	27.9%
19	1/9/2021	\$133,494,933	\$102,317,060	\$31,177,873	30.5%	\$57,484,861	\$23,070,952	\$34,413,909	149.2%	\$190,979,794	\$125,388,012	\$65,591,782	52.3%
20	1/16/2021	\$127,542,833	\$103,309,252	\$24,233,581	23.5%	\$87,788,743	\$23,931,389	\$63,857,355	266.8%	\$215,331,576	\$127,240,641	\$88,090,936	69.2%
21	1/23/2021		\$99,944,800				\$25,502,038				\$125,446,838		
22	1/30/2021		\$104,739,453				\$25,038,970				\$129,778,423		
23	2/6/2021		\$111,993,607				\$21,709,985				\$133,703,592		
24	2/13/2021		\$108,712,863				\$20,194,178				\$128,907,041		
25	2/20/2021		\$105,386,919				\$19,576,236				\$124,963,155		
26	2/27/2021		\$111,502,521				\$20,438,613				\$131,941,134		
27	3/6/2021		\$118,172,204				\$21,289,905				\$139,462,109		
28	3/13/2021		\$110,225,673				\$20,683,247				\$130,908,920		
29	3/20/2021		\$100,753,932				\$19,335,422				\$120,089,354		
30	3/27/2021		\$92,874,514				\$18,220,638				\$111,095,152		
31	4/3/2021		\$97,875,268				\$18,608,229				\$116,483,497		
32	4/10/2021		\$95,060,231				\$18,312,370				\$113,372,601		
33	4/17/2021		\$111,984,645				\$19,908,374				\$131,893,019		
34	4/24/2021		\$114,733,967				\$20,610,971				\$135,344,938		
35	5/1/2021		\$122,883,938				\$23,239,818				\$146,123,756		
36	5/8/2021		\$124,659,093				\$23,844,834				\$148,503,927		
37	5/15/2021		\$126,618,315				\$23,816,884				\$150,435,199		
38	5/22/2021		\$123,421,203				\$24,844,768				\$148,265,971		
39	5/29/2021		\$121,587,798				\$26,174,754				\$147,762,552		
40	6/5/2021		\$128,152,407				\$27,653,351				\$155,805,758		
41	6/12/2021		\$124,337,803				\$24,325,618				\$148,663,421		
42	6/19/2021		\$121,867,783				\$21,238,025				\$143,105,808		

Texas Lottery Commission
Fiscal Year Over Year Change in Sales
 Unaudited
 FY 2021 Compared to FY 2020

			SCRATCH TICKETS				DRAW GAMES				TOTAL SALES			
FY 2021			FY 2021	FY 2020	Difference	% change - Cumulative Sales	FY 2021	FY 2020	Difference	% change - Cumulative Sales	FY 2021	FY 2020	Difference	% change - Cumulative Sales
Week	Week	Ending												
43	6/26/2021			\$120,777,685				\$21,274,287				\$142,051,972		
44	7/3/2021			\$121,140,896				\$22,407,902				\$143,548,798		
45	7/10/2021			\$114,591,206				\$22,821,511				\$137,412,717		
46	7/17/2021			\$114,444,652				\$23,021,475				\$137,466,127		
47	7/24/2021			\$113,701,030				\$23,085,273				\$136,786,303		
48	7/31/2021			\$115,767,821				\$22,752,584				\$138,520,405		
49	8/7/2021			\$117,301,276				\$23,791,977				\$141,093,253		
50	8/14/2021			\$111,123,756				\$22,904,623				\$134,028,379		
51	8/21/2021			\$112,919,496				\$21,669,592				\$134,589,088		
52	8/28/2021			\$113,122,453				\$22,007,271				\$135,129,724		
	8/31/2021**			\$30,859,274				\$3,863,234				\$34,722,508		
Total thru Current Week			\$2,285,505,701	\$1,892,574,904	\$392,930,797	20.8%	\$594,907,447	\$434,047,450	\$160,859,997	37.1%	\$2,880,413,148	\$2,326,622,354	\$553,790,794	23.8%
Fiscal Year Total			\$2,285,505,701	\$5,555,813,386			\$594,907,447	\$1,148,214,397			\$2,880,413,148	\$6,704,027,783		

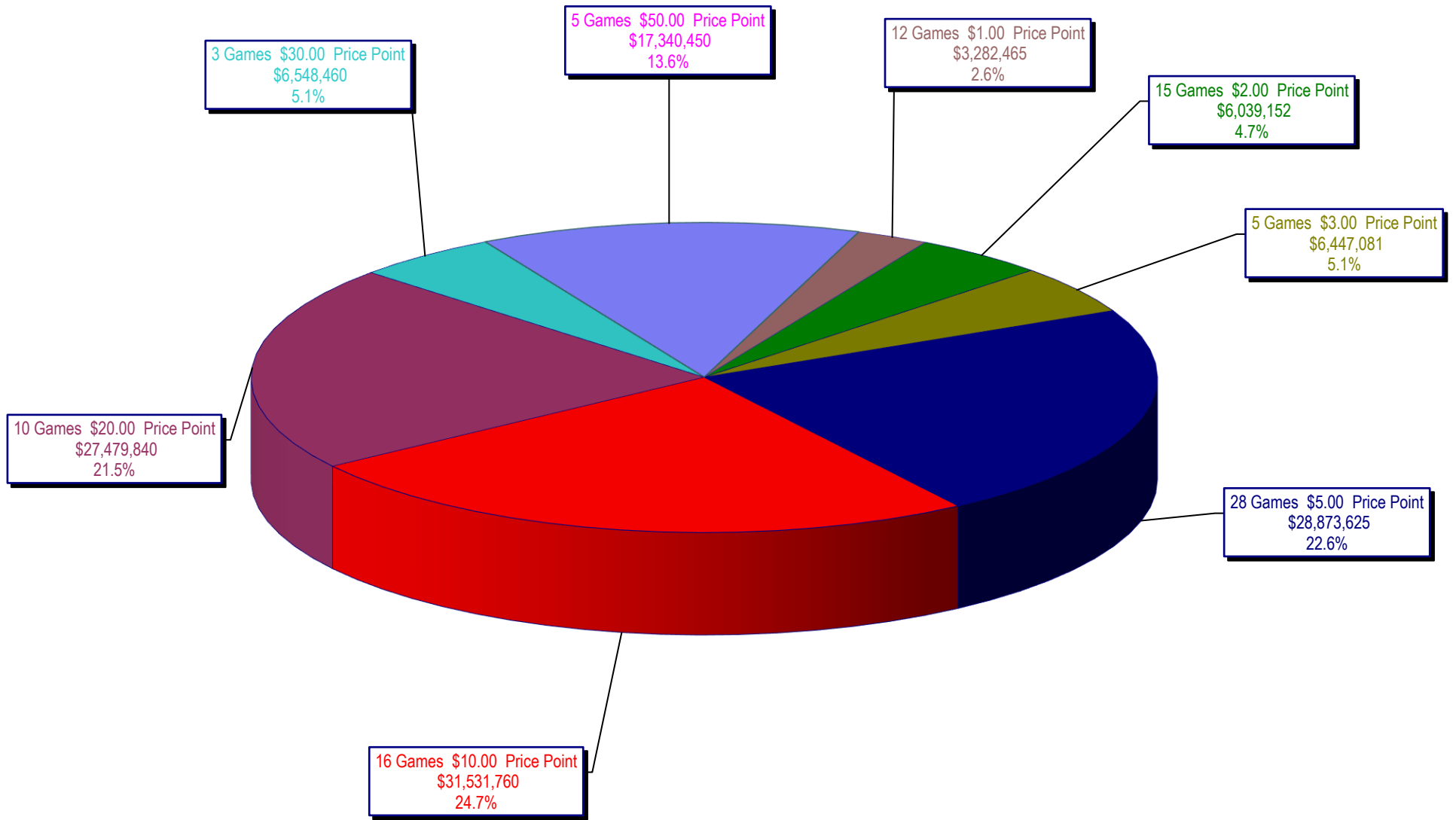
* FY 21 includes 5 days
 ** FY 20 includes 2 days
 ** FY 21 includes 3 days

Texas Lottery Commission Fiscal Year Over Year Change in Sales



Note: Report is prepared on a Fiscal Year basis.

Texas Lottery Commission
Scratch Ticket Sales
For the Week Ending 1/16/2021
(Unaudited)



Texas Lottery Commission
All Game Sales
For the Week Ending 1/16/2021
(Unaudited)

