



WEEKLY SALES SUMMARY

Unaudited

Week Ending: 01/17/2009

Texas Lottery Commission
Fiscal Year to Date Sales Comparison
Unaudited

Through the week ending 01/17/2009 (20 weeks)

Sales by Game	FY 2007 *	FY 2008 **	FY 2009	\$ Change		% Change	
				FY 2009 to FY 2007	FY 2009 to FY 2008	FY 2009 to FY 2007	FY 2009 to FY 2008
Instant	\$ 1,084,848,564	\$ 1,076,578,591	\$ 1,032,325,985	\$ -52,522,579	\$ -44,252,606	-4.8%	-4.1%
Lotto Texas	80,263,984	81,764,649	69,321,475	-10,942,510	-12,443,175	-13.6%	-15.2%
Pick 3	120,347,449	108,413,749	106,169,777	-14,177,673	-2,243,972	-11.8%	-2.1%
Pick 3 Sum It Up	-	1,888,883	2,245,131	2,245,131	356,249	-	-
Cash 5	33,874,654	29,828,841	27,016,236	-6,858,418	-2,812,605	-20.2%	-9.4%
Texas Two Step	21,293,165	15,830,831	17,355,829	-3,937,336	1,524,998	-18.5%	9.6%
Mega Millions	56,276,724	55,875,051	64,738,322	8,461,598	8,863,271	15.0%	15.9%
Megaplier	13,768,034	13,926,524	15,387,739	1,619,705	1,461,215	11.8%	10.5%
Daily 4	-	15,718,472	16,140,660	16,140,660	422,189	-	2.7%
Daily 4 Sum It Up	-	4,033,408	2,056,270	2,056,270	-1,977,138	-	-49.0%
Total	\$ 1,410,672,574	\$ 1,403,858,997	\$ 1,352,757,423	\$ -57,915,152	\$ -51,101,575	-4.1%	-3.6%

* 3 extra days in 2007 ** 2 extra days in 2008

Texas Lottery Commission
Fiscal Year Over Year Change in Sales
Unaudited
FY 2009 Compared to FY 2008

Week	FY 2009 Week Ending	INSTANT TICKETS				ON-LINE GAMES				TOTAL SALES			
		FY 2009	FY 2008	Difference	% change - Cumulative Sales	FY 2009	FY 2008	Difference	% change - Cumulative Sales	FY 2009	FY 2008	Difference	% change - Cumulative Sales
1	9/6/2008**	\$44,890,104	\$62,376,229	(\$17,486,125)	-28.0%	\$14,722,011	\$19,372,224	(\$4,650,213)	-24.0%	\$59,612,115	\$81,748,453	(\$22,136,338)	-27.1%
2	9/13/2008	\$46,309,551	\$52,458,866	(\$6,149,315)	-20.6%	\$13,704,860	\$16,926,163	(\$3,221,303)	-21.7%	\$60,014,411	\$69,385,029	(\$9,370,618)	-20.8%
3	9/20/2008	\$42,923,171	\$49,998,934	(\$7,075,763)	-18.6%	\$12,291,263	\$15,792,283	(\$3,501,020)	-21.8%	\$55,214,434	\$65,791,217	(\$10,576,783)	-19.4%
4	9/27/2008	\$47,042,801	\$49,894,175	(\$2,851,374)	-15.6%	\$14,222,339	\$14,800,514	(\$578,175)	-17.9%	\$61,265,140	\$64,694,689	(\$3,429,549)	-16.2%
5	10/4/2008	\$50,747,162	\$53,486,863	(\$2,739,701)	-13.5%	\$15,784,472	\$16,618,430	(\$833,958)	-15.3%	\$66,531,634	\$70,105,293	(\$3,573,659)	-14.0%
6	10/11/2008	\$49,763,789	\$50,918,020	(\$1,154,231)	-11.7%	\$15,622,498	\$15,601,410	\$21,088	-12.9%	\$65,386,287	\$66,519,430	(\$1,133,143)	-12.0%
7	10/18/2008	\$49,299,053	\$50,532,253	(\$1,233,200)	-10.5%	\$15,167,940	\$15,682,666	(\$514,726)	-11.6%	\$64,466,993	\$66,214,919	(\$1,747,926)	-10.7%
8	10/25/2008	\$49,977,581	\$50,347,450	(\$369,869)	-9.3%	\$14,525,843	\$15,586,516	(\$1,060,673)	-11.0%	\$64,503,424	\$65,933,966	(\$1,430,542)	-9.7%
9	11/1/2008	\$50,346,542	\$53,953,733	(\$3,607,191)	-9.0%	\$14,838,845	\$16,775,983	(\$1,937,139)	-11.1%	\$65,185,387	\$70,729,716	(\$5,544,330)	-9.5%
10	11/8/2008	\$54,860,087	\$53,635,090	\$1,224,997	-7.9%	\$16,057,069	\$15,912,791	\$144,278	-9.9%	\$70,917,156	\$69,547,881	\$1,369,275	-8.3%
11	11/15/2008	\$53,484,812	\$51,254,401	\$2,230,411	-6.8%	\$15,829,819	\$15,797,076	\$32,744	-9.0%	\$69,314,631	\$67,051,477	\$2,263,155	-7.3%
12	11/22/2008	\$52,806,511	\$50,897,817	\$1,908,694	-5.9%	\$16,460,748	\$15,801,720	\$659,028	-7.9%	\$69,267,259	\$66,699,537	\$2,567,722	-6.4%
13	11/29/2008	\$52,199,741	\$53,913,115	(\$1,713,374)	-5.7%	\$17,397,576	\$17,055,505	\$342,072	-7.1%	\$69,597,317	\$70,968,620	(\$1,371,303)	-6.0%
14	12/6/2008	\$56,731,851	\$55,702,697	\$1,029,154	-5.1%	\$20,363,789	\$17,900,717	\$2,463,073	-5.5%	\$77,095,640	\$73,603,414	\$3,492,227	-5.2%
15	12/13/2008	\$54,109,617	\$53,703,516	\$406,101	-4.7%	\$22,952,228	\$17,820,841	\$5,131,387	-3.0%	\$77,061,845	\$71,524,357	\$5,537,488	-4.3%
16	12/20/2008	\$55,777,328	\$57,592,769	(\$1,815,441)	-4.6%	\$15,833,517	\$17,436,233	(\$1,602,716)	-3.4%	\$71,610,845	\$75,029,002	(\$3,418,157)	-4.3%
17	12/27/2008	\$57,597,885	\$57,696,003	(\$98,118)	-4.3%	\$15,851,771	\$14,743,680	\$1,108,091	-2.9%	\$73,449,656	\$72,439,683	\$1,009,973	-4.0%
18	1/3/2009	\$57,582,115	\$57,935,952	(\$353,837)	-4.1%	\$16,900,028	\$15,704,450	\$1,195,578	-2.3%	\$74,482,143	\$73,640,402	\$841,741	-3.7%
19	1/10/2009	\$54,250,945	\$55,360,542	(\$1,109,597)	-4.0%	\$16,203,220	\$15,691,540	\$511,680	-2.0%	\$70,454,165	\$71,052,082	(\$597,917)	-3.5%
20	1/17/2009	\$51,625,339	\$54,920,166	(\$3,294,827)	-4.1%	\$15,701,605	\$16,259,669	(\$558,064)	-2.1%	\$67,326,944	\$71,179,835	(\$3,852,891)	-3.6%
21	1/24/2009		\$54,439,890				\$16,691,724				\$71,131,614		
22	1/31/2009		\$57,464,382				\$17,968,227				\$75,432,609		
23	2/7/2009		\$60,715,019				\$20,097,338				\$80,812,357		
24	2/14/2009		\$57,093,143				\$22,179,908				\$79,273,051		
25	2/21/2009		\$57,627,047				\$27,230,539				\$84,857,586		
26	2/28/2009		\$55,591,667				\$17,016,118				\$72,607,785		
27	3/7/2009		\$56,837,481				\$16,690,193				\$73,527,674		
28	3/14/2009		\$54,587,112				\$16,448,165				\$71,035,277		
29	3/21/2009		\$53,098,937				\$16,639,184				\$69,738,121		
30	3/28/2009		\$53,933,689				\$17,698,625				\$71,632,314		
31	4/4/2009		\$57,598,982				\$17,665,411				\$75,264,393		
32	4/11/2009		\$53,954,185				\$15,860,784				\$69,814,969		
33	4/18/2009		\$53,946,736				\$16,452,676				\$70,399,412		
34	4/25/2009		\$51,533,006				\$16,873,949				\$68,406,955		
35	5/2/2009		\$53,250,568				\$18,202,103				\$71,452,671		
36	5/9/2009		\$54,060,849				\$18,422,562				\$72,483,411		
37	5/16/2009		\$54,010,641				\$20,728,360				\$74,739,001		
38	5/23/2009		\$50,377,032				\$15,461,384				\$65,838,416		
39	5/30/2009		\$49,545,080				\$15,175,370				\$64,720,450		
40	6/6/2009		\$53,702,986				\$15,982,166				\$69,685,152		

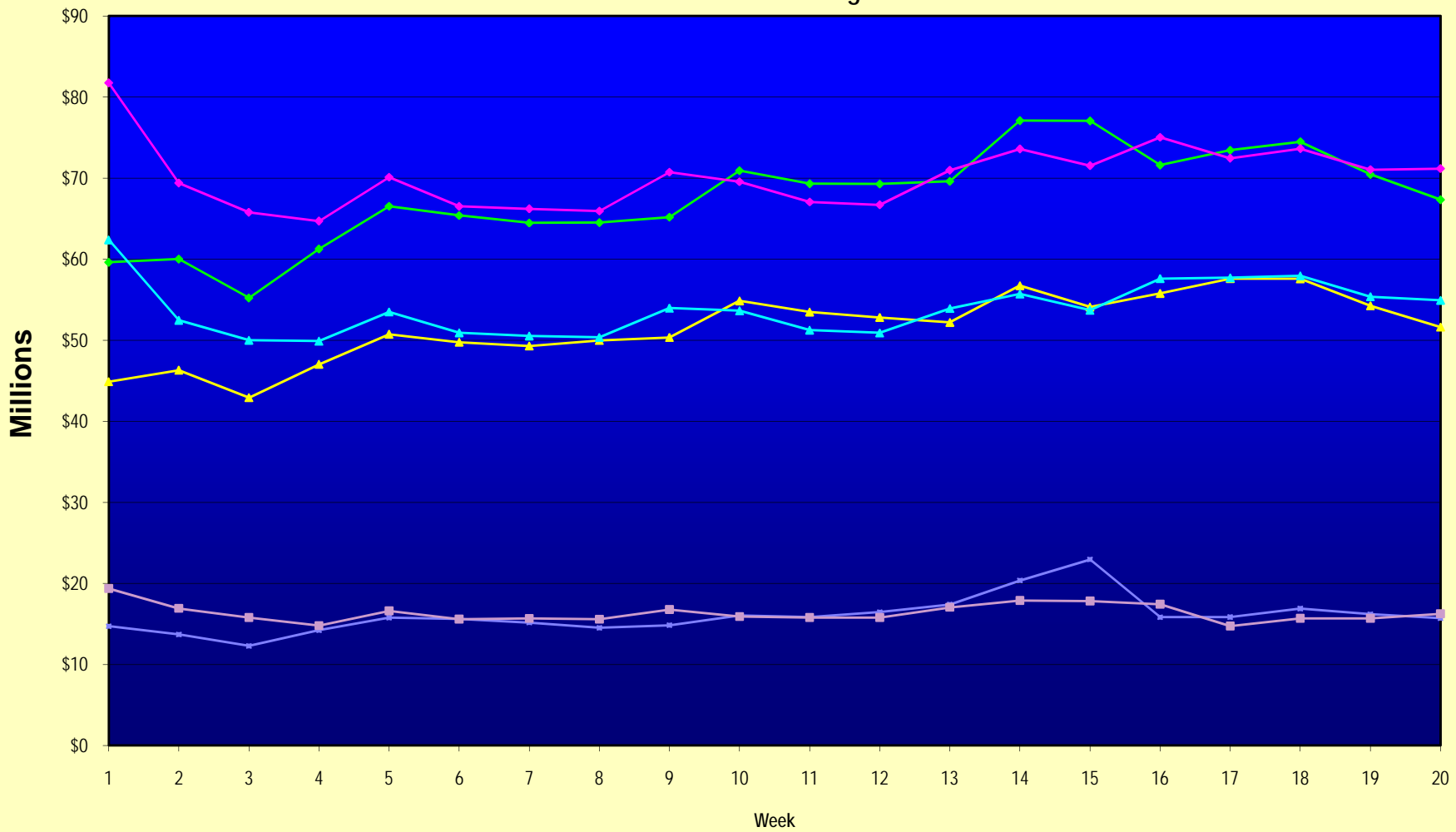
Note: Week 1 is not a full week of sales as this report is prepared on a Fiscal Year basis.

Texas Lottery Commission
Fiscal Year Over Year Change in Sales
Unaudited
FY 2009 Compared to FY 2008

Week	FY 2009 Week Ending	INSTANT TICKETS				ON-LINE GAMES				TOTAL SALES			
		FY 2009	FY 2008	Difference	% change - Cumulative Sales	FY 2009	FY 2008	Difference	% change - Cumulative Sales	FY 2009	FY 2008	Difference	% change - Cumulative Sales
41	6/13/2009		\$51,171,483				\$16,589,087				\$67,760,570		
42	6/20/2009		\$50,650,362				\$15,728,484				\$66,378,846		
43	6/27/2009		\$49,258,266				\$15,250,905				\$64,509,171		
44	7/4/2009		\$53,393,355				\$16,270,619				\$69,663,974		
45	7/11/2009		\$53,127,756				\$16,914,922				\$70,042,678		
46	7/18/2009		\$51,593,146				\$17,752,738				\$69,345,884		
47	7/25/2009		\$49,902,181				\$16,706,145				\$66,608,326		
48	8/1/2009		\$49,605,420				\$16,254,383				\$65,859,803		
49	8/8/2009		\$50,961,907				\$16,770,496				\$67,732,403		
50	8/15/2009		\$49,452,511				\$16,749,487				\$66,201,998		
51	8/22/2009		\$49,249,518				\$17,286,302				\$66,535,820		
52	8/29/2009		\$49,468,928				\$18,109,997				\$67,578,925		
53	9/5/2009		\$6,054,239				\$493,109				\$6,547,348		
Total thru Current Week		\$1,032,325,985	\$1,076,578,591	(\$44,252,606)	-4.1%	\$320,431,438	\$327,280,406	(\$6,848,969)	-2.1%	\$1,352,757,423	\$1,403,858,997	(\$51,101,575)	-3.6%
Fiscal Year Total		\$1,032,325,985	\$2,783,836,095			\$320,431,438	\$887,641,858			\$1,352,757,423	\$3,671,477,953		

** FY 2009 includes 6 days; FY 2008 includes 8 days
FY 2009 average daily sales are \$9,242,258. Two days at average daily sales are \$18,484,516.

Texas Lottery Commission Fiscal Year Over Year Change in Sales



Note: Week 1 is not a full week of sales as this report is prepared on a Fiscal Year basis.

Texas Lottery Commission
Instant Tickets by Price Point
Sales, Prize Expense, Sales Contribution and Payout Percentage With Year Over Year Changes
Unaudited

Fiscal Year	Price Point	# of Active Games	FY Sales	% of Instant Ticket Sales	Year over Year Change in Sales	FY Prize Expense	Year over Year Change in Prize Expense	FY Sales Contribution	Year over Year Change in Contribution	Average Prize Payout %	Year over Year Change in Payout %
2008	\$1.00	37	92,920,114	8.6%		55,826,456		37,093,658		60.1%	0.0%
thru	\$2.00	44	178,386,162	16.6%		115,971,345		62,414,817		65.0%	0.2%
1/19/2008	\$3.00	12	85,533,084	7.9%		56,277,713		29,255,371		65.8%	0.0%
	\$5.00	36	292,866,310	27.2%		198,099,357		94,766,953		67.6%	-0.5%
	\$7.00	11	73,000,235	6.8%		49,639,122		23,361,113		68.0%	0.0%
	\$10.00	17	166,687,446	15.5%		115,805,226		50,882,220		69.5%	-1.4%
	\$20.00	6	64,514,640	6.0%		46,384,948		18,129,692		71.9%	-0.1%
	\$25.00	2	38,625,700	3.6%		28,043,865		10,581,835		72.6%	0.3%
	\$30.00	3	17,207,250	1.6%		12,448,215		4,759,035		72.3%	0.1%
	\$50.00	2	66,837,650	6.2%		48,218,266		18,619,384		72.1%	0.0%
Total		170	\$1,076,578,591			\$726,714,513		\$349,864,078		67.5%	
2009	\$1.00	36	91,422,380	8.9%		55,015,570		36,406,810		60.2%	0.1%
thru	\$2.00	31	176,885,361	17.1%		114,699,981		62,185,380		64.8%	-0.7%
1/17/2009	\$3.00	14	111,229,740	10.8%		73,119,440		38,110,300		65.7%	0.0%
	\$5.00	34	317,052,264	30.7%		215,635,865		101,416,399		68.0%	0.1%
	\$7.00	6	45,158,085	4.4%		30,714,002		14,444,083		68.0%	0.0%
	\$10.00	14	140,057,690	13.6%		98,022,035		42,035,655		70.0%	0.0%
	\$20.00	7	97,010,240	9.4%		69,626,149		27,384,091		71.8%	0.0%
	\$25.00	1	2,374,825	0.2%		1,727,324		647,501		72.7%	0.2%
	\$30.00	3	9,127,500	0.9%		6,614,080		2,513,420		72.5%	0.1%
	\$50.00	3	42,007,900	4.1%		30,368,722		11,639,178		72.3%	0.2%
Total		149	\$1,032,325,985			\$695,543,169		\$336,782,816		67.4%	-0.4%
Variance	\$1.00	-1	-1,497,734		-1.6%	-810,886	-1.5%	-686,848	-1.9%	0.10%	
2009 to	\$2.00	-13	-1,500,801		-0.8%	-1,271,363	-1.1%	-229,438	-0.4%	-0.17%	
2008	\$3.00	2	25,696,656		30.0%	16,841,727	29.9%	8,854,929	30.3%	-0.06%	
	\$5.00	-2	24,185,954		8.3%	17,536,508	8.9%	6,649,446	7.0%	0.37%	
	\$7.00	-5	-27,842,150		-38.1%	-18,925,120	-38.1%	-8,917,030	-38.2%	0.02%	
	\$10.00	-3	-26,629,756		-16.0%	-17,783,191	-15.4%	-8,846,565	-17.4%	0.51%	
	\$20.00	1	32,495,600		50.4%	23,241,202	50.1%	9,254,398	51.0%	-0.13%	
	\$25.00	-1	-36,250,875		-93.9%	-26,316,541	-93.8%	-9,934,334	-93.9%	0.13%	
	\$30.00	0	-8,079,750		-47.0%	-5,834,135	-46.9%	-2,245,615	-47.2%	0.12%	
	\$50.00	1	-24,829,750		-37.1%	-17,849,544	-37.0%	-6,980,206	-37.5%	0.15%	
Total		-21	-\$44,252,606		-4.1%	-\$31,171,344	-4.3%	-\$13,081,262	-3.7%	-0.13%	

Texas Lottery Commission
Instant Tickets by Price Point
Sales, Prize Expense, Sales Contribution and Payout Percentage With Year Over Year Changes
Unaudited

Notes - Instant Ticket Variances

		FY 2009		FY 2008		Difference
Sales	\$1 - \$7		\$741,747,830		\$722,705,905	\$19,041,925
Prize Exp.	\$1 - \$7		\$489,184,858		\$475,813,993	\$13,370,865
Sales Cont.	\$1 - \$7		\$252,562,972		\$246,891,912	\$5,671,060
Prize Exp. %	\$1 - \$7		66.0%		65.8%	0.1%
		FY 2009		FY 2008		Difference
Sales	\$10 - \$50		\$290,578,155		\$353,872,686	-\$63,294,531
Prize Exp.	\$10 - \$50		\$206,358,311		\$250,900,520	-\$44,542,209
Sales Cont.	\$10 - \$50		\$84,219,844		\$102,972,166	-\$18,752,322
Prize Exp. %	\$10 - \$50		71.0%		70.9%	0.1%
		FY 2009		FY 2008		Difference
Sales	Instant		\$1,032,325,985		\$1,076,578,591	-\$44,252,606
Prize Exp.	Instant		\$695,543,169		\$726,714,513	-\$31,171,344
Sales Cont.	Instant		\$336,782,816		\$349,864,078	-\$13,081,262
Prize Exp. %	Instant		67.4%		67.5%	-0.1%

		FY 2009		FY 2008		Difference
Sales	\$1 - \$10		\$881,805,520		\$889,393,351	-\$7,587,831
Prize Exp.	\$1 - \$10		\$587,206,893		\$591,619,220	-\$4,412,326
Sales Cont.	\$1 - \$10		\$294,598,627		\$297,774,131	-\$3,175,505
Prize Exp. %	\$1 - \$10		66.6%		66.5%	0.1%
		FY 2009		FY 2008		Difference
Sales	\$20 - \$50		\$150,520,465		\$187,185,240	-\$36,664,775
Prize Exp.	\$20 - \$50		\$108,336,276		\$135,095,294	-\$26,759,018
Sales Cont.	\$20 - \$50		\$42,184,189		\$52,089,946	-\$9,905,757
Prize Exp. %	\$20 - \$50		72.0%		72.2%	-0.2%
		FY 2009		FY 2008		Difference
Sales	Instant		\$1,032,325,985		\$1,076,578,591	-\$44,252,606
Prize Exp.	Instant		\$695,543,169		\$726,714,513	-\$31,171,344
Sales Cont.	Instant		\$336,782,816		\$349,864,078	-\$13,081,262
Prize Exp. %	Instant		67.4%		67.5%	-0.1%

Texas Lottery Commission
Weekly Sales Summary
& Comparison to Previous Week
 Unaudited

	Week Ending 01/17/2009	% of Sales	Week Ending 01/10/2009	% of Sales	\$ change	% change
	<u>THIS WEEK</u>		<u>LAST WEEK</u>			
Total Sales	<u>\$67,326,944</u>		<u>\$70,454,165</u>		<u>-\$3,127,221</u>	-4.44%
Instant Tickets	<u>\$51,625,339</u>	76.7%	<u>\$54,250,945</u>	77.0%	<u>-\$2,625,606</u>	-4.84%
Lotto Texas	\$3,668,303	5.4%	\$3,582,400	5.1%	\$85,903	2.40%
Pick 3	\$5,443,159	8.1%	\$5,476,890	7.8%	-\$33,731	-0.62%
Pick 3 Sum It Up	\$112,605	0.2%	\$116,675	0.2%	-\$4,070	-3.49%
Cash 5	\$1,387,958	2.1%	\$1,403,531	2.0%	-\$15,573	-1.11%
Texas Two Step	\$778,563	1.2%	\$1,267,847	1.8%	-\$489,284	-38.59%
Mega Millions	\$2,683,707	4.0%	\$2,701,275	3.8%	-\$17,568	-0.65%
Megaplier	\$675,416	1.0%	\$681,574	1.0%	-\$6,158	-0.90%
Daily 4	\$852,987	1.3%	\$868,919	1.2%	-\$15,932	-1.83%
Daily 4 Sum It Up	\$98,908	0.1%	\$104,110	0.1%	-\$5,202	-5.00%
Total Online Sales	<u>\$15,701,605</u>		<u>\$16,203,220</u>		<u>-\$501,615</u>	-3.10%

* Totals may not sum due to rounding.

Texas Lottery Commission
Weekly Sales Summary
Unaudited

INSTANT TICKETS
TOP TEN SELLING GAMES

For the Week Ending : 01/17/2009

Rank	Price Point	Game	Sales (Millions)
1	\$ 5	HOT HAND	\$ 4.112
2	\$ 10	MEGA JUMBO BUCKS II	\$ 2.484
3	\$ 5	GIANT JUMBO BUCKS II	\$ 2.375
4	\$ 3	BONUS CASHWORD	\$ 2.298
5	\$ 2	HEARTS OF FIRE	\$ 2.139
6	\$ 20	TEXAS \$50 MILLION CLUB	\$ 2.070
7	\$ 5	FANTASTIC 5'S	\$ 2.029
8	\$ 7	SIZZLIN' RED 7'S	\$ 1.940
9	\$ 10	SET FOR LIFE	\$ 1.840
10	\$ 2	BREAK THE BANK	\$ 1.703

Texas Lottery Commission
Prize Payout Tracking Report
Unaudited

Through Week Ending 01/17/2009

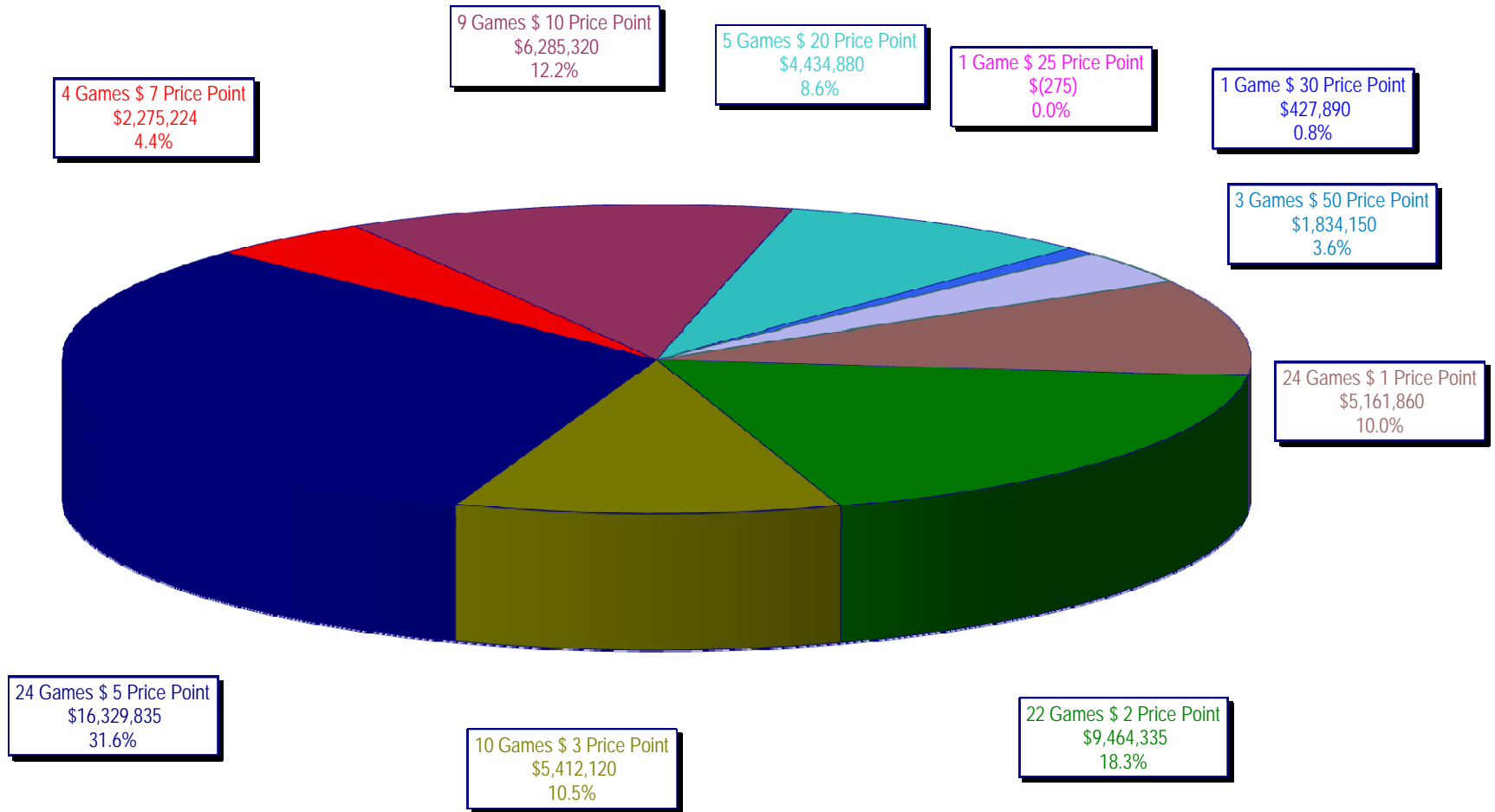
On-Line Sales

		FY Sales Through Week Ending 1/17/2009		FY Prize Expense Through Week Ending 1/17/2009	Actual* Prize Payout	Base Payout (Prize Pool)
Lotto	\$	69,321,475	\$	34,757,924	50.14%	50.00%
Pick 3		106,169,777		51,136,390	48.16%	50.00%
Pick 3 Sum It Up		2,245,131		1,014,957	45.21%	50.00%
Cash 5		27,016,236		13,608,396	50.37%	50.00%
Texas Two-Step		17,355,829		9,561,713	55.09%	50.00%
Mega Millions		64,738,322		31,302,558	48.35%	50.00%**
Megaplier		15,387,739		5,611,058	36.46%	N/A
Daily 4		16,140,660		7,067,525	43.79%	50.00%
Daily 4-Sum It Up		2,056,270		774,256	37.65%	50.00%
Totals	\$	320,431,438	\$	154,834,776	48.32%	

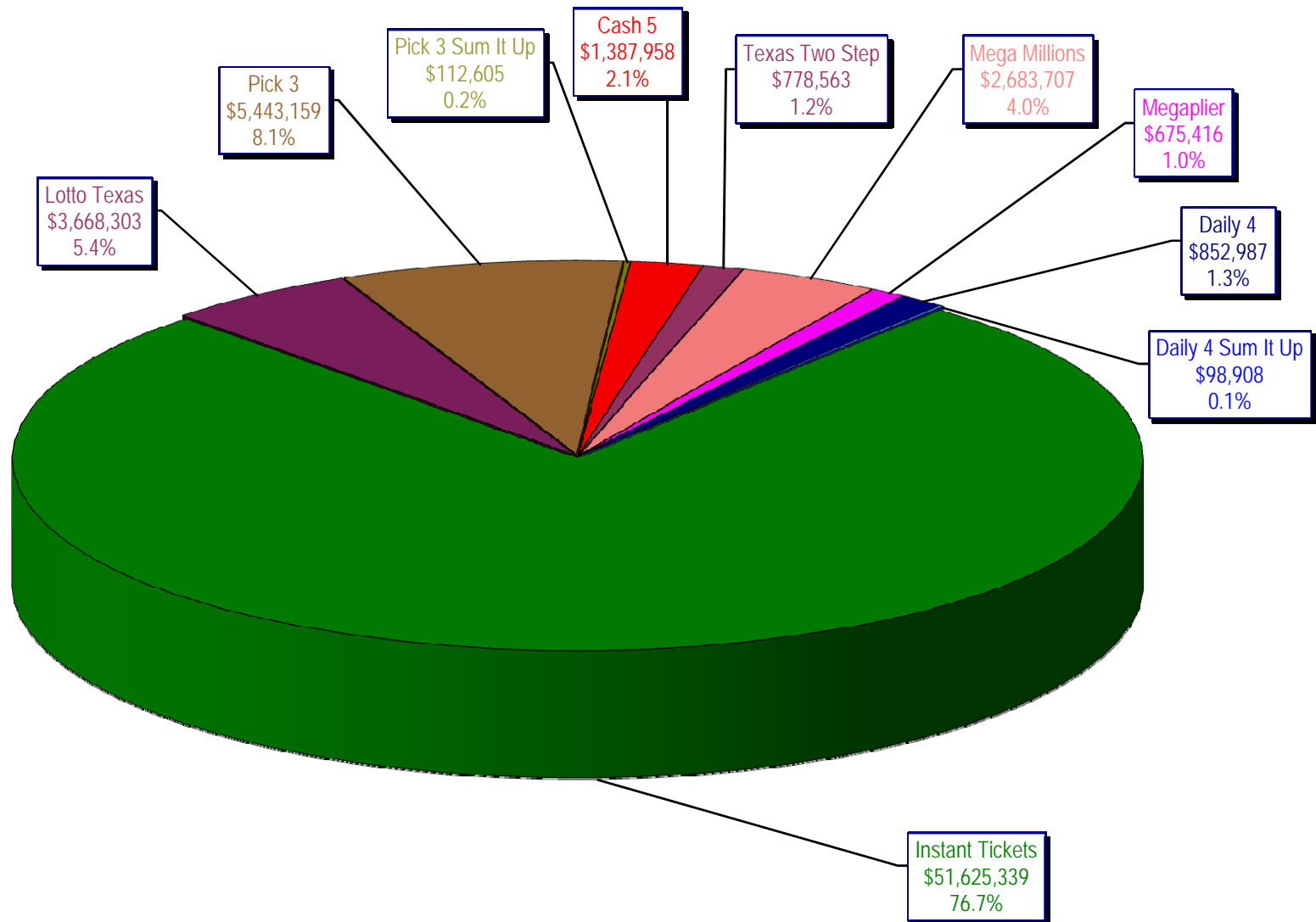
* Before Unclaimed Prizes

** Estimated; depends on # of guaranteed prizes won in Texas

Texas Lottery Commission
Instant Ticket Sales
For the Week Ending 01/17/2009
(Unaudited)



Texas Lottery Commission
All Game Sales
For the Week Ending 01/17/2009
(Unaudited)



Texas Lottery Commission - Weekly Sales Summary for FY 2009 (Unaudited)

Week Ended	Instant Games	New Games & Dates	Lotto Texas	Jackpot		Pick 3	Pick 3 Sum It Up	Cash 5	Texas Two Step	Jackpot		Mega Millions	Jackpot		Megaplier	Daily 4	Daily 4 Sum It Up	Total	Per Cap.
				W	S					M/T	TH/F		T	F					
9/6/2008	50,944,343.00	1108 (\$2,N), 1088 (\$3, N) - 9/01/08	3,378,718.00	5	6	5,436,414.00	122,123.00	1,396,622.00	890,346.00	350	450	2,445,490.00	12	16	649,090.00	786,482.50	109,834.00	66,159,462.50	2.77
9/13/2008	46,309,551.00	1109 (\$1,N), 1098 (\$5, N) - 9/08/08	3,020,089.00	7	8	4,705,585.50	105,899.00	1,279,412.00	856,199.00	600	200	2,327,214.00	24	12	617,672.00	696,633.00	96,156.50	60,014,411.00	2.51
9/20/2008	42,923,171.00	0	3,054,093.00	9	10	4,121,734.50	90,718.00	1,155,350.00	637,792.00	225	250	1,978,127.00	15	12	540,225.00	627,210.00	86,013.50	55,214,434.00	2.31
9/27/2008	47,042,801.00	1111 (\$2,N), 1099 (\$5, N) - 9/22/08	3,427,671.00	11	12	4,821,563.00	103,189.50	1,288,062.00	834,307.00	275	425	2,322,862.00	16	24	617,085.00	709,741.50	97,858.00	61,265,140.00	2.56
10/4/2008	50,747,162.00	1113 (\$1,N) 9/29/08	3,675,683.00	13	14	5,305,711.00	116,332.50	1,369,040.00	1,074,874.00	525	650	2,671,927.00	32	42	693,845.00	770,782.50	106,277.00	66,531,634.00	2.78
10/11/2008	49,763,789.00	0	3,732,365.00	15	16	5,287,094.00	114,665.50	1,370,334.00	1,305,250.00	800	975	2,306,070.00	12	16	622,120.00	778,204.00	106,395.00	65,386,286.50	2.74
10/18/2008	49,299,053.00	1117 (\$3,N), 1118 (\$20,N) - 10/13/08	3,780,438.00	17	18	5,149,258.00	109,530.00	1,355,601.00	741,849.00	200	200	2,500,644.00	23	32	652,198.00	776,366.00	102,056.00	64,466,993.00	2.70
10/25/2008	49,977,581.00	1119 (\$1,N), 1120 (\$5,N) - 10/20/08	3,210,762.00	4	5	5,099,671.00	107,104.50	1,339,079.00	789,649.00	225	275	2,456,965.00	42	12	641,206.00	778,434.00	102,972.50	64,503,424.00	2.70
11/1/2008	50,346,542.00	1121 (\$2,N), 1122 (\$10,N) - 10/27/08	3,325,641.00	6	7	5,234,124.00	109,983.00	1,339,046.00	946,035.00	375	475	2,347,596.00	16	23	626,235.00	805,572.00	104,612.50	65,185,386.50	2.73
11/8/2008	54,860,087.00	1123 (\$3,N), 1124 (\$7,N) - 11/03/08; 1103 (\$3,N) - 11/05/08; 1063 (\$3,N) - 11/07/08	3,290,417.00	4	5	5,686,701.00	118,495.00	1,397,985.00	1,158,101.00	625	750	2,729,302.50	31	42	692,662.00	871,230.00	112,175.50	70,917,156.00	2.97
11/15/2008	53,484,812.00	1125 (\$1, N), 1126 (\$5,N) - 11/10/08	3,336,934.00	6	7	5,459,984.00	112,884.00	1,366,024.00	766,955.00	200	225	3,102,251.00	51	62	749,736.00	830,957.00	104,094.00	69,314,631.00	2.90
11/22/2008	52,806,511.00	0	3,452,481.00	8	9	5,329,591.00	108,861.50	1,358,271.00	743,950.00	200	200	3,666,517.00	73	86	847,201.00	849,077.50	104,797.50	69,267,258.50	2.90
11/29/2008	52,199,741.00	1127 (\$2,N), 1128 (\$5,N) - 11/24/08	3,585,374.00	10	11	5,340,783.50	111,443.00	1,315,233.00	686,077.00	200	225	4,441,715.00	96	111	968,906.00	845,475.50	102,569.00	69,597,317.00	2.91
12/6/2008	56,731,851.00	0	3,794,991.00	12	13	5,752,593.00	121,663.50	1,416,446.00	780,328.00	250	200	6,238,355.00	128	146	1,270,214.00	881,841.50	107,357.00	77,095,640.00	3.23
12/13/2008	54,109,617.00	1129 (\$1, N) - 12/08/08	3,315,658.00	4	5	5,580,770.00	114,295.50	1,384,858.00	766,893.00	225	250	9,150,536.00	170	207	1,691,121.00	846,176.50	101,919.50	77,061,844.50	3.22
12/20/2008	55,777,328.00	1104 (\$2,N), 1105 (\$5,N), 1106 (\$10,N) - 12/15/08	3,432,340.00	6	7	5,741,120.00	116,075.50	1,401,805.00	741,945.00	200	200	2,736,234.00	12	16	687,875.00	871,579.50	104,543.00	71,610,845.00	3.00
12/27/2008	57,597,885.00	1077 (\$1,N), 1110 (\$1,N) - 12/22/08	3,582,169.00	8	4	5,628,081.50	115,323.00	1,340,590.00	708,906.00	225	250	2,842,167.00	22	29	706,042.00	828,346.00	100,146.00	73,449,655.50	3.07
1/3/2009	57,582,115.00	0	3,784,763.00	5	6	5,690,220.50	120,519.50	1,406,807.00	934,000.00	325	525	3,190,457.00	37	46	780,850.00	885,674.00	106,736.50	74,482,142.50	3.12
1/10/2009	54,250,945.00	1135 (\$2,N), 1136 (\$5,N) - 1/5/09	3,582,400.00	7	8	5,476,890.00	116,674.50	1,403,531.00	1,267,847.00	675	900	2,701,275.00	12	16	681,574.00	868,919.00	104,109.50	70,454,165.00	2.95
1/17/2009	51,625,339.00	1137 (\$1,N), 1138 (\$3,N) - 1/12/09	3,668,302.50	9	10	5,443,159.00	112,605.00	1,387,958.00	778,563.00	200	225	2,683,707.00	22	12	675,416.00	852,987.00	98,907.50	67,326,944.00	2.82
weekly change	-4.84%		2.40%			-0.62%	-3.49%	-1.11%	-38.59%			-0.65%			-0.90%	-1.83%	-5.00%		-4.44%
	SALES		SALES			SALES	SALES	SALES	SALES			SALES			SALES	SALES	SALES	SALES	% of Sales
Startup to date	34,512,911,987.00		10,348,418,521.50			3,404,888,729.00	8,730,961.00	2,146,172,246.00	443,621,547.00			990,876,916.50			233,595,773.00	58,357,631.50	10,395,073.50	52,366,103,358.00	100.0%
Calendar Year to date	131,008,312.00		9,049,229.50			13,729,230.00	175,670.50	3,433,792.00	2,462,410.00			6,920,013.00			1,727,958.00	2,149,973.00	254,266.00	170,910,854.00	100.0%
Fiscal Year to date 2009	1,032,325,985.00		69,321,474.50			106,169,776.50	2,245,131.00	27,016,236.00	17,355,829.00			64,738,321.50			15,387,739.00	16,140,660.00	2,056,270.00	1,352,757,422.50	100.0%