



*WEEKLY SALES SUMMARY*

Unaudited

**Week Ending: 1/17/2015**

Texas Lottery Commission  
Fiscal Year to Date Sales Comparison  
Unaudited

Through the Week Ending 1/17/2015 (20 Weeks)

Sales by Game	FY 2013 *	FY 2014 **	FY 2015	\$ Change		% Change	
				FY 2015 to FY 2013	FY 2015 to FY 2014	FY 2015 to FY 2013	FY 2015 to FY 2014
Instants	\$ 1,179,407,442	\$ 1,227,493,583	\$ 1,271,728,340	\$ 92,320,898	\$ 44,234,757	7.8%	3.6%
Lotto Texas	61,128,228	51,085,964	46,423,424	-14,704,804	-4,662,540	-24.1%	-9.1%
Lotto Extra	-	6,610,694	7,031,601	7,031,601	420,907	-	6.4%
Pick 3	102,693,790	96,496,263	95,199,398	-7,494,393	-1,296,866	-7.3%	-1.3%
Pick 3 Sum It Up	1,929,119	1,923,175	1,819,581	-109,539	-103,594	-5.7%	-5.4%
Cash Five	21,970,656	20,326,823	19,006,008	-2,964,648	-1,320,815	-13.5%	-6.5%
Texas Two Step	22,650,711	21,259,087	20,430,286	-2,220,425	-828,801	-9.8%	-3.9%
Mega Millions	41,000,202	93,897,662	66,824,003	25,823,801	-27,073,659	63.0%	-28.8%
Megaplier	9,536,522	19,248,504	14,978,921	5,442,399	-4,269,583	57.1%	-22.2%
Daily 4	27,080,342	31,877,459	32,217,719	5,137,377	340,260	19.0%	1.1%
Daily 4 Sum It Up	1,793,487	1,967,316	1,917,615	124,128	-49,702	6.9%	-2.5%
Powerball	111,732,433	81,415,998	66,661,578	-45,070,855	-14,754,420	-40.3%	-18.1%
Power Play	11,158,749	9,689,167	8,737,644	-2,421,105	-951,523	-21.7%	-9.8%
All or Nothing	35,523,740	18,094,599	14,758,054	-20,765,686	-3,336,545	-58.5%	-18.4%
Monopoly	-	-	2,656,530	2,656,530	2,656,530	-	-
<b>Total</b>	<b>\$ 1,627,605,421</b>	<b>\$ 1,681,386,294</b>	<b>\$ 1,670,390,701</b>	<b>\$ 42,785,280</b>	<b>\$ -10,995,593</b>	<b>2.6%</b>	<b>-0.7%</b>

\* 2 extra days

\*\* 1 extra day

<sup>1</sup> Monopoly sales were suspended after draw on 12/12/14

Texas Lottery Commission  
 Fiscal Year to Date Cumulative Average Sales Comparison  
 Unaudited

Through the Week Ending 1/17/2015 (20 Weeks)

Sales by Game	FY 2013	FY 2014	FY 2015
Instant	\$ 8,364,592	\$ 8,767,811	\$ 9,149,125
Lotto Texas	433,534	364,900	333,981
Lotto Extra	-	47,219	50,587
Pick 3	728,325	689,259	684,888
Pick 3 Sum It Up	13,682	13,737	13,091
Cash Five	155,820	145,192	136,734
Texas Two Step	160,643	151,851	146,980
Mega Millions	290,782	670,698	480,748
Megaplier	67,635	137,489	107,762
Daily 4	192,059	227,696	231,782
Daily 4 Sum It Up	12,720	14,052	13,796
Powerball	792,429	581,543	479,580
Power Play	79,140	69,208	62,861
All or Nothing	* 267,096	129,247	106,173
Monopoly	-	- **	48,301
<b>Total</b>	<b>\$ 11,558,455</b>	<b>\$ 12,009,902</b>	<b>\$ 12,046,388</b>

	thru 1/19/2013	thru 1/18/2014	thru 1/17/2015
	141 days	140 days	139 days
*	133 days		** 55 days

Texas Lottery Commission  
Fiscal Year Over Year Change in Sales  
Unaudited  
FY 2015 Compared to FY 2014

			INSTANT TICKETS				DRAW GAMES				TOTAL SALES			
FY 2015			FY 2015	FY 2014	Difference	% change - Cumulative Sales	FY 2015	FY 2014	Difference	% change - Cumulative Sales	FY 2015	FY 2014	Difference	% change - Cumulative Sales
Week	Week Ending													
1	9/6/2014 *		\$54,911,801	\$58,587,757	(\$3,675,956)	-6.3%	\$17,482,488	\$22,369,499	(\$4,887,011)	-21.8%	\$72,394,289	\$80,957,256	(\$8,562,967)	-10.6%
2	9/13/2014		\$61,436,533	\$57,135,931	\$4,300,602	7.5%	\$19,097,081	\$25,412,980	(\$6,315,899)	-24.9%	\$80,533,614	\$82,548,911	(\$2,015,297)	-2.4%
3	9/20/2014		\$60,959,234	\$59,018,194	\$1,941,040	3.3%	\$20,567,894	\$29,161,241	(\$8,593,347)	-29.5%	\$81,527,128	\$88,179,435	(\$6,652,307)	-7.5%
4	9/27/2014		\$59,710,056	\$57,927,984	\$1,782,072	3.1%	\$19,920,828	\$20,012,313	(\$91,485)	-0.5%	\$79,630,884	\$77,940,297	\$1,690,588	2.2%
5	10/4/2014		\$62,119,854	\$62,146,816	(\$26,962)	0.0%	\$18,531,421	\$20,043,557	(\$1,512,136)	-7.5%	\$80,651,275	\$82,190,373	(\$1,539,098)	-1.9%
6	10/11/2014		\$61,253,665	\$60,867,582	\$386,083	0.6%	\$18,985,332	\$19,480,962	(\$495,631)	-2.5%	\$80,238,997	\$80,348,544	(\$109,548)	-0.1%
7	10/18/2014		\$60,230,048	\$60,612,193	(\$382,145)	-0.6%	\$19,538,402	\$20,079,610	(\$541,209)	-2.7%	\$79,768,450	\$80,691,803	(\$923,354)	-1.1%
8	10/25/2014		\$62,384,112	\$59,548,277	\$2,835,835	4.8%	\$21,475,643	\$19,319,928	\$2,155,715	11.2%	\$83,859,755	\$78,868,205	\$4,991,550	6.3%
9	11/1/2014		\$63,404,713	\$61,710,236	\$1,694,477	2.7%	\$23,568,817	\$18,308,976	\$5,259,842	28.7%	\$86,973,530	\$80,019,212	\$6,954,319	8.7%
10	11/8/2014		\$65,486,719	\$61,668,594	\$3,818,125	6.2%	\$23,749,032	\$19,555,070	\$4,193,963	21.4%	\$89,235,751	\$81,223,664	\$8,012,088	9.9%
11	11/15/2014		\$61,745,521	\$60,057,025	\$1,688,496	2.8%	\$17,449,604	\$20,930,071	(\$3,480,468)	-16.6%	\$79,195,125	\$80,987,096	(\$1,791,972)	-2.2%
12	11/22/2014		\$66,353,583	\$63,118,266	\$3,235,317	5.1%	\$17,108,084	\$19,086,770	(\$1,978,687)	-10.4%	\$83,461,667	\$82,205,036	\$1,256,631	1.5%
13	11/29/2014		\$60,471,184	\$57,145,294	\$3,325,890	5.8%	\$17,303,129	\$20,434,618	(\$3,131,489)	-15.3%	\$77,774,313	\$77,579,912	\$194,401	0.3%
14	12/6/2014		\$66,648,696	\$59,883,783	\$6,764,913	11.3%	\$18,862,425	\$22,791,842	(\$3,929,417)	-17.2%	\$85,511,121	\$82,675,625	\$2,835,496	3.4%
15	12/13/2014		\$65,708,630	\$60,310,298	\$5,398,332	9.0%	\$18,649,598	\$35,859,153	(\$17,209,555)	-48.0%	\$84,358,228	\$96,169,451	(\$11,811,223)	-12.3%
16	12/20/2014		\$68,551,298	\$65,088,999	\$3,462,299	5.3%	\$19,051,100	\$46,832,745	(\$27,781,646)	-59.3%	\$87,602,398	\$111,921,744	(\$24,319,347)	-21.7%
17	12/27/2014		\$73,858,618	\$67,721,619	\$6,136,999	9.1%	\$20,006,357	\$18,218,091	\$1,788,266	9.8%	\$93,864,975	\$85,939,710	\$7,925,265	9.2%
18	1/3/2015		\$67,733,268	\$67,162,991	\$570,277	0.8%	\$21,355,167	\$19,140,745	\$2,214,422	11.6%	\$89,088,435	\$86,303,736	\$2,784,699	3.2%
19	1/10/2015		\$64,745,641	\$65,049,914	(\$304,273)	-0.5%	\$22,265,347	\$17,954,333	\$4,311,015	24.0%	\$87,010,988	\$83,004,247	\$4,006,742	4.8%
20	1/17/2015		\$64,015,166	\$62,731,830	\$1,283,336	2.0%	\$23,694,617	\$18,900,213	\$4,794,405	25.4%	\$87,709,783	\$81,632,043	\$6,077,741	7.4%
21	1/24/2015			\$59,085,886				\$19,558,830				\$78,644,716		
22	1/31/2015			\$64,099,096				\$20,764,006				\$84,863,102		
23	2/7/2015			\$67,717,353				\$22,433,672				\$90,151,025		
24	2/14/2015			\$69,949,998				\$25,572,367				\$95,522,365		
25	2/21/2015			\$72,422,148				\$31,832,665				\$104,254,813		
26	2/28/2015			\$72,883,830				\$21,827,140				\$94,710,970		
27	3/7/2015			\$73,726,744				\$22,528,352				\$96,255,096		
28	3/14/2015			\$71,026,808				\$25,171,358				\$96,198,166		
29	3/21/2015			\$69,174,125				\$25,837,564				\$95,011,689		
30	3/28/2015			\$66,886,917				\$18,604,870				\$85,491,787		
31	4/4/2015			\$71,218,020				\$19,883,667				\$91,101,687		
32	4/11/2015			\$65,970,648				\$18,875,485				\$84,846,133		
33	4/18/2015			\$64,922,280				\$19,723,048				\$84,645,328		
34	4/25/2015			\$60,578,829				\$18,978,148				\$79,556,977		
35	5/2/2015			\$64,244,545				\$19,029,632				\$83,274,177		
36	5/9/2015			\$65,679,029				\$19,350,478				\$85,029,507		
37	5/16/2015			\$63,627,971				\$19,865,609				\$83,493,580		
38	5/23/2015			\$61,902,451				\$19,892,846				\$81,795,297		
39	5/30/2015			\$61,264,953				\$20,014,636				\$81,279,589		
40	6/6/2015			\$64,019,948				\$21,782,886				\$85,802,834		
41	6/13/2015			\$59,742,598				\$19,736,748				\$79,479,346		
42	6/20/2015			\$59,010,863				\$17,095,336				\$76,106,199		

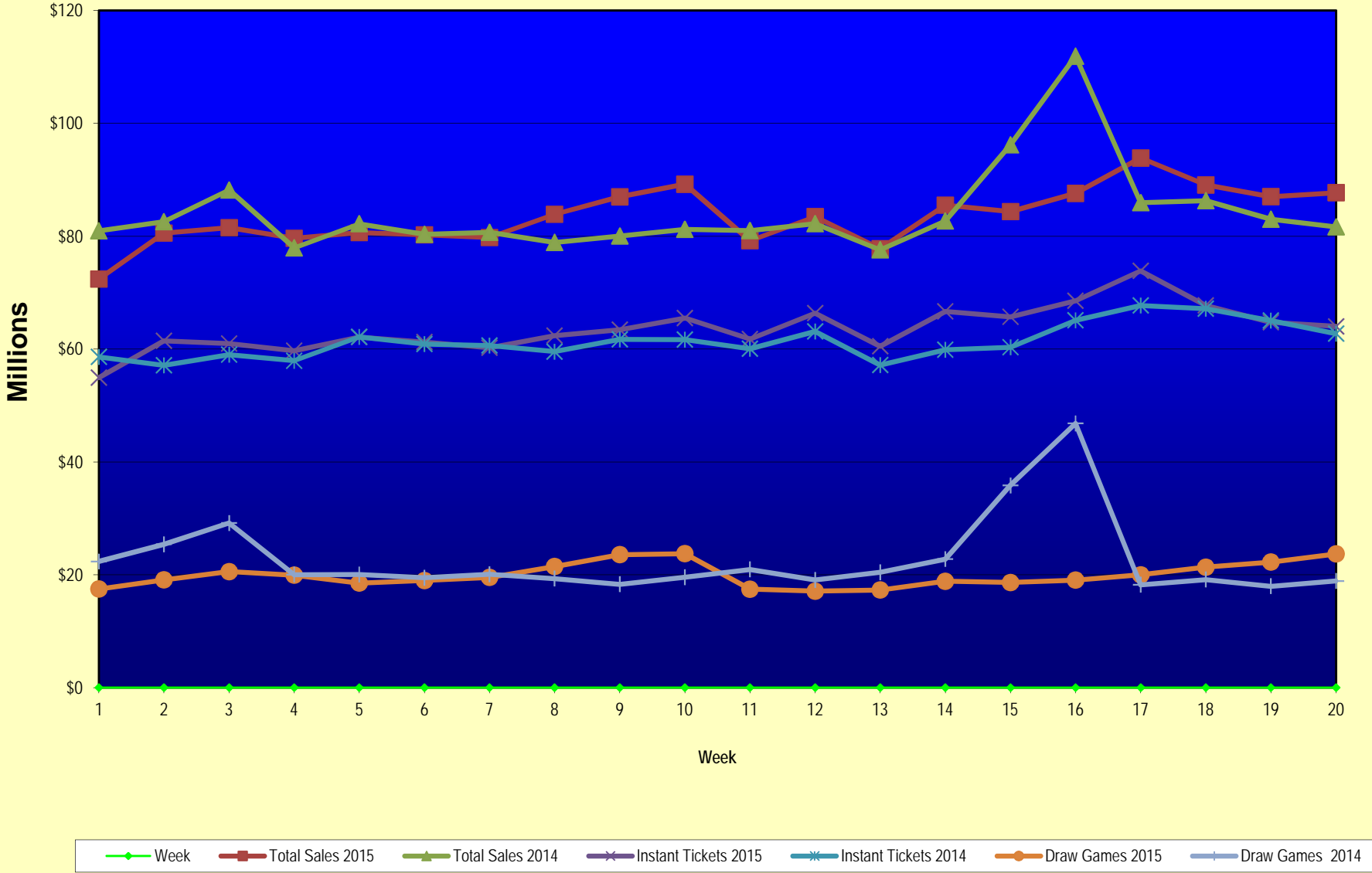
Texas Lottery Commission  
Fiscal Year Over Year Change in Sales  
Unaudited  
FY 2015 Compared to FY 2014

			INSTANT TICKETS				DRAW GAMES				TOTAL SALES			
FY 2015			FY 2015	FY 2014	Difference	% change - Cumulative Sales	FY 2015	FY 2014	Difference	% change - Cumulative Sales	FY 2015	FY 2014	Difference	% change - Cumulative Sales
Week	Week Ending													
43	6/27/2015			\$58,102,191				\$17,635,736				\$75,737,927		
44	7/4/2015			\$61,566,071				\$18,521,529				\$80,087,600		
45	7/11/2015			\$58,729,674				\$17,913,387				\$76,643,061		
46	7/18/2015			\$58,202,035				\$17,602,032				\$75,804,067		
47	7/25/2015			\$57,220,932				\$17,736,889				\$74,957,821		
48	8/1/2015			\$64,207,294				\$18,208,743				\$82,416,037		
49	8/8/2015			\$60,066,007				\$19,022,945				\$79,088,952		
50	8/15/2015			\$58,374,809				\$18,567,246				\$76,942,055		
51	8/22/2015			\$57,277,475				\$18,916,460				\$76,193,935		
52	8/29/2015			\$61,884,256				\$17,283,925				\$79,168,181		
	8/31/2015 **			\$7,949,803				\$706,956				\$8,656,759		
Total thru Current Week			\$1,271,728,340	\$1,227,493,583	\$44,234,757	3.6%	\$398,662,361	\$453,892,711	(\$55,230,350)	-12.2%	\$1,670,390,701	\$1,681,386,294	(\$10,995,593)	-0.7%
Fiscal Year Total			\$1,271,728,340	\$3,280,229,170			\$398,662,361	\$1,104,367,893			\$1,670,390,701	\$4,384,597,063		

\* FY 15 includes 6 days

\*\* FY 15 includes 2 days; FY 14 includes 1 day

### Texas Lottery Commission Fiscal Year Over Year Change in Sales



Note: Week 1 is not a full week of sales as this report is prepared on a Fiscal Year basis.

Texas Lottery Commission  
**Instant Tickets by Price Point**  
Sales, Prize Expense, Sales Contribution and Payout Percentage With Year Over Year Changes  
Unaudited

Fiscal Year	Price Point	# of Active Games	FY Sales	% of Instant Ticket Sales	Year over Year Change in Sales	FY Prize Expense	Year over Year Change in Prize Expense	FY Sales Contribution	Year over Year Change in Contribution	Average Prize Payout %	Year over Year Change in Payout %
2014	\$1.00	23	70,219,615	5.7%		42,086,943		28,132,672		59.9%	-1.3%
Through	\$2.00	30	149,154,634	12.2%		96,825,192		52,329,443		64.9%	-0.1%
1/18/2014	\$3.00	14	127,202,994	10.4%		83,269,155		43,933,839		65.5%	-0.1%
	\$5.00	42	411,597,990	33.5%		279,486,243		132,111,747		67.9%	-0.2%
	\$10.00	12	224,375,560	18.3%		157,925,126		66,450,434		70.4%	-1.0%
	\$20.00	9	199,858,740	16.3%		149,648,891		50,209,849		74.9%	0.0%
	\$50.00	2	45,084,050	3.7%		35,000,970		10,083,080		77.6%	0.0%
<b>Total</b>		<b>132</b>	<b>\$1,227,493,583</b>			<b>\$844,242,518</b>		<b>\$383,251,065</b>		<b>68.8%</b>	<b>-0.2%</b>
2015	\$1.00	18	64,604,369	5.1%		39,395,009		25,209,360		61.0%	1.8%
thru	\$2.00	27	133,501,712	10.5%		87,937,660		45,564,052		65.9%	1.6%
1/17/2015	\$3.00	13	126,074,064	9.9%		83,100,488		42,973,576		65.9%	0.4%
	\$5.00	38	404,814,225	31.8%		275,009,852		129,804,373		67.9%	0.0%
	\$10.00	14	250,809,960	19.7%		176,777,300		74,032,660		70.5%	0.2%
	\$20.00	9	234,088,060	18.4%		175,502,556		58,585,504		75.0%	0.1%
	\$50.00	3	57,835,950	4.5%		44,949,015		12,886,935		77.7%	0.1%
<b>Total</b>		<b>122</b>	<b>\$1,271,728,340</b>			<b>\$882,671,881</b>		<b>\$389,056,459</b>		<b>69.4%</b>	<b>0.7%</b>
Variance	\$1.00	-5	-5,615,246		-8.0%	-2,691,934	-6.4%	-2,923,312	-10.4%	1.04%	
2015 to	\$2.00	-3	-15,652,922		-10.5%	-8,887,531	-9.2%	-6,765,391	-12.9%	0.95%	
2014	\$3.00	-1	-1,128,930		-0.9%	-168,667	-0.2%	-960,263	-2.2%	0.45%	
	\$5.00	-4	-6,783,765		-1.6%	-4,476,390	-1.6%	-2,307,375	-1.7%	0.03%	
	\$10.00	2	26,434,400		11.8%	18,852,174	11.9%	7,582,226	11.4%	0.10%	
	\$20.00	0	34,229,320		17.1%	25,853,665	17.3%	8,375,655	16.7%	0.10%	
	\$50.00	1	12,751,900		28.3%	9,948,045	28.4%	2,803,855	27.8%	0.08%	
<b>Total</b>		<b>-10</b>	<b>\$44,234,757</b>		<b>3.6%</b>	<b>\$38,429,362</b>	<b>4.6%</b>	<b>\$5,805,395</b>	<b>1.5%</b>	<b>0.63%</b>	

Notes - Instant Ticket Variances

Texas Lottery Commission  
**Instant Tickets by Price Point**  
**Sales, Prize Expense, Sales Contribution and Payout Percentage With Year Over Year Changes**  
 Unaudited

		FY 2015		FY 2014		Difference
Sales	\$1 - \$5	\$728,994,370		\$758,175,233		-\$29,180,863
Prize Exp.	\$1 - \$5	\$485,443,010		\$501,667,533		-\$16,224,522
Sales Cont.	\$1 - \$5	\$243,551,360		\$256,507,700		-\$12,956,341
Prize Exp. %	\$1 - \$5	66.6%		66.2%		0.4%
		FY 2015		FY 2014		Difference
Sales	\$10 - \$50	\$542,733,970		\$469,318,350		\$73,415,620
Prize Exp.	\$10 - \$50	\$397,228,870		\$342,574,986		\$54,653,884
Sales Cont.	\$10 - \$50	\$145,505,100		\$126,743,364		\$18,761,736
Prize Exp. %	\$10 - \$50	73.2%		73.0%		0.2%
		FY 2015		FY 2014		Difference
Sales	Instant	\$1,271,728,340		\$1,227,493,583		\$44,234,757
Prize Exp.	Instant	\$882,671,881		\$844,242,518		\$38,429,362
Sales Cont.	Instant	\$389,056,459		\$383,251,065		\$5,805,395
Prize Exp. %	Instant	69.4%		68.8%		0.6%

		FY 2015		FY 2014		Difference
Sales	\$1 - \$10	\$979,804,330		\$982,550,793		-\$2,746,463
Prize Exp.	\$1 - \$10	\$662,220,310		\$659,592,658		\$2,627,652
Sales Cont.	\$1 - \$10	\$317,584,020		\$322,958,135		-\$5,374,115
Prize Exp. %	\$1 - \$10	67.6%		67.1%		0.5%
		FY 2015		FY 2014		Difference
Sales	\$20 - \$50	\$291,924,010		\$244,942,790		\$46,981,220
Prize Exp.	\$20 - \$50	\$220,451,570		\$184,649,860		\$35,801,710
Sales Cont.	\$20 - \$50	\$71,472,440		\$60,292,930		\$11,179,510
Prize Exp. %	\$20 - \$50	75.5%		75.4%		0.1%
		FY 2015		FY 2014		Difference
Sales	Instant	\$1,271,728,340		\$1,227,493,583		\$44,234,757
Prize Exp.	Instant	\$882,671,881		\$844,242,518		\$38,429,362
Sales Cont.	Instant	\$389,056,459		\$383,251,065		\$5,805,395
Prize Exp. %	Instant	69.4%		68.8%		0.6%



Texas Lottery Commission  
**Weekly Sales Summary**  
**& Comparison to Previous Week**  
 Unaudited

	Week Ending 1/17/2015		Week Ending 1/10/2015			
	<u>THIS WEEK</u>	% of Sales	<u>LAST WEEK</u>	% of Sales	<u>\$ change</u>	<u>% change</u>
Total Sales	<u>\$87,709,783</u>		<u>\$87,010,988</u>		<u>\$698,795</u>	0.80%
Instant Tickets	<u>\$64,015,166</u>	73.0%	<u>\$64,745,641</u>	74.4%	<u>-\$730,475</u>	-1.13%
Lotto	\$2,321,110	2.6%	\$2,269,384	2.6%	\$51,726	2.28%
Lotto Extra	\$362,124	0.4%	\$353,334	0.4%	\$8,790	2.49%
Pick 3	\$4,713,502	5.4%	\$4,633,563	5.3%	\$79,939	1.73%
Pick 3 Sum It Up	\$94,319	0.1%	\$89,809	0.1%	\$4,510	5.02%
Cash Five	\$961,349	1.1%	\$965,014	1.1%	-\$3,665	-0.38%
Texas Two Step	\$870,940	1.0%	\$839,722	1.0%	\$31,218	3.72%
Mega Millions	\$5,796,919	6.6%	\$5,160,810	5.9%	\$636,109	12.33%
Megaplier	\$1,219,766	1.4%	\$1,101,434	1.3%	\$118,332	10.74%
Daily 4	\$1,636,351	1.9%	\$1,574,307	1.8%	\$62,044	3.94%
Daily 4 Sum It Up	\$95,924	0.1%	\$92,418	0.1%	\$3,506	3.79%
Powerball	\$4,374,663	5.0%	\$3,969,588	4.6%	\$405,075	10.20%
Power Play	\$557,630	0.6%	\$507,993	0.6%	\$49,637	9.77%
All or Nothing	\$690,082	0.8%	\$708,082	0.8%	-\$18,000	-2.54%
Monopoly	-\$60	0.0%	-\$110	0.0%	\$50	-45.45%
Total Draw Game Sales	<u>\$23,694,617</u>		<u>\$22,265,347</u>		<u>\$1,429,270</u>	6.42%

\* Totals may not sum due to rounding.

Texas Lottery Commission  
Weekly Sales Summary  
Unaudited

INSTANT TICKETS  
TOP TEN SELLING GAMES

For the Week Ending: 1/17/15

Rank	Price Point	Game	Sales (Millions)
1	\$ 20	100X THE CASH	\$ 4.987
2	\$ 10	50X THE CASH	\$ 4.431
3	\$ 5	20X THE CASH	\$ 3.506
4	\$ 3	LOTERIA	\$ 2.519
5	\$ 5	CAESARS	\$ 2.475
6	\$ 50	MILLIONAIRES CLUB	\$ 2.369
7	\$ 5	\$100,000 CASHWORD-O-RAMA	\$ 2.046
8	\$ 10	\$200,000,000 CASH BLOWOUT	\$ 1.972
9	\$ 20	\$500 MILLION EXTREME CASH BLAST	\$ 1.852
10	\$ 3	BONUS CASHWORD	\$ 1.756

Texas Lottery Commission  
Prize Payout Tracking Report  
Unaudited

Through the Week Ending: 1/17/15

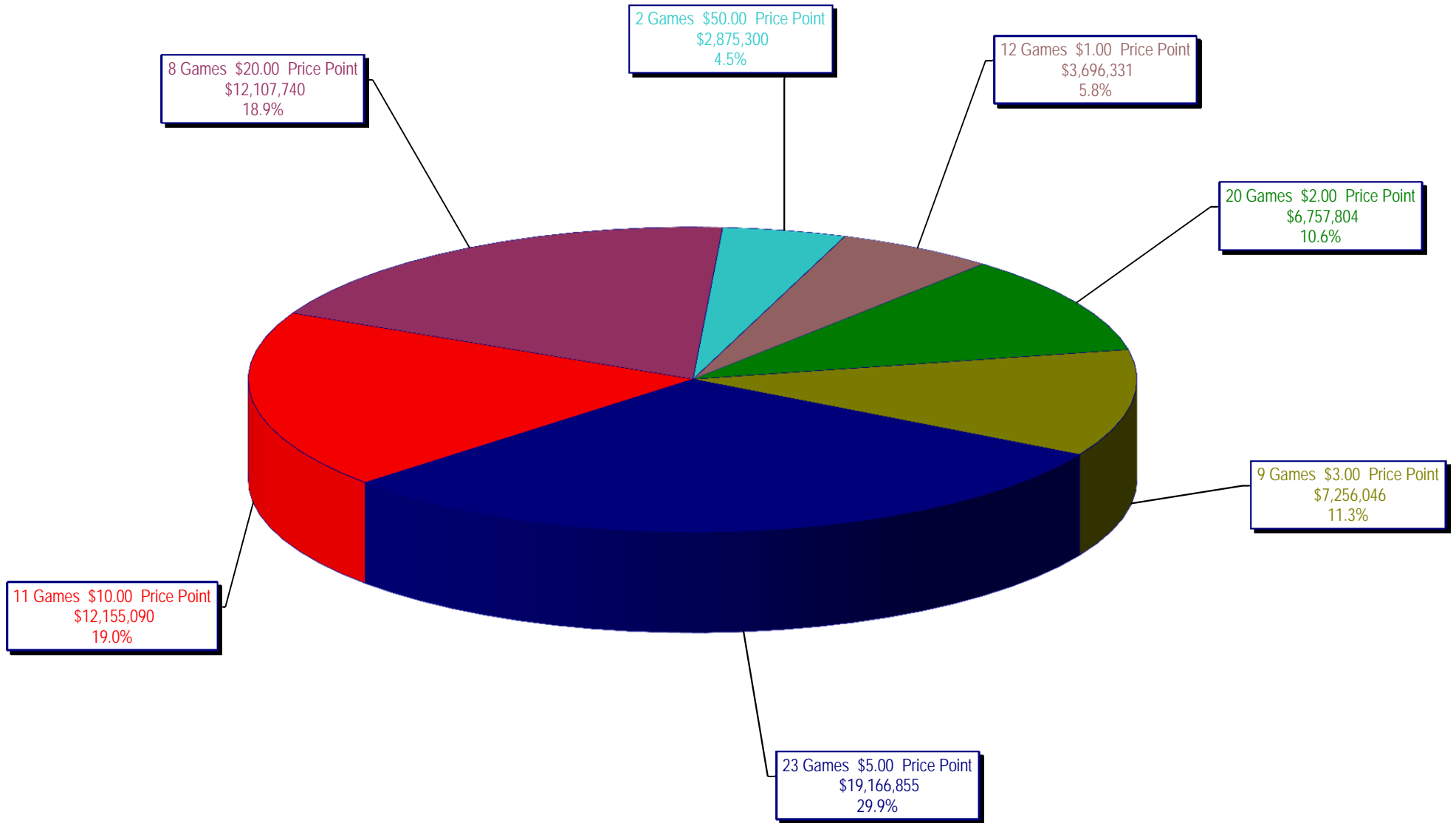
Draw Game Sales

		FY Sales Through Week Ending 1/17/2015		FY Prize Expense Through Week Ending 1/17/2015	Actual* Prize Payout	Base Payout (Prize Pool)
Lotto	\$	46,423,424	\$	23,314,536	50.22%	54.00%
Lotto Extra		7,031,601		3,807,524	54.15%	53.70%
Pick 3		95,199,398		45,852,860	48.17%	50.00%
Pick 3 Sum It Up		1,819,581		812,356	44.65%	50.00%
Cash Five		19,006,008		9,503,005	50.00%	50.00%
Texas Two Step		20,430,286		10,522,108	51.50%	50.00%
Mega Millions		66,824,003		34,078,033	51.00%	50.00%**
Megaplier		14,978,921		7,489,101	50.00%	N/A
Daily 4		32,217,719		15,589,650	48.39%	50.00%
Daily 4 Sum It Up		1,917,615		790,836	41.24%	50.00%
Powerball		66,661,578		33,395,275	50.10%	50.00%**
Power Play		8,737,644		4,377,311	50.10%	N/A
All or Nothing		14,758,054		9,099,672	61.66%	55.98%
Monopoly		2,656,530		3,617,028	136.16%	50.00%
<b>Totals</b>	\$	<b>398,662,361</b>	\$	<b>202,249,293</b>	<b>50.73%</b>	

\* Before Unclaimed Prizes

\*\* Estimated; depends on # of guaranteed prizes won in Texas

Texas Lottery Commission  
Instant Ticket Sales  
For the Week Ending 1/17/15  
(Unaudited)



**Texas Lottery Commission**  
**All Game Sales**  
**For the Week Ending 1/17/15**  
**(Unaudited)**

