



WEEKLY SALES SUMMARY

Unaudited

Week Ending: 1/21/2017

Texas Lottery Commission
Fiscal Year to Date Sales Comparison
Unaudited

Through the Week Ending 1/21/2017 (21 Weeks)

Sales by Game	FY 2015 *	FY 2016 **	FY 2017	\$ Change		% Change	
				FY 2017 to FY 2015	FY 2017 to FY 2016	FY 2017 to FY 2015	FY 2017 to FY 2016
Scratch Tickets	\$ 1,334,297,496	\$ 1,411,386,374	\$ 1,461,192,833	\$ 126,895,337	\$ 49,806,459	9.5%	3.5%
Lotto Texas	48,596,027	53,112,710	43,560,686	-5,035,341	-9,552,024	-10.4%	-18.0%
Lotto Extra	7,371,936	8,964,522	8,367,097	995,161	-597,425	13.5%	-6.7%
Pick 3	99,715,222	100,068,014	96,945,426	-2,769,796	-3,122,588	-2.8%	-3.1%
Pick 3 Sum It Up	1,914,183	2,016,495	1,840,948	-73,235	-175,547	-3.8%	-8.7%
Cash Five	19,938,903	18,539,947	17,241,098	-2,697,805	-1,298,849	-13.5%	-7.0%
Texas Two Step	21,311,169	20,407,304	21,555,785	244,616	1,148,481	1.1%	5.6%
Mega Millions	68,824,039	53,275,666	43,205,621	-25,618,418	-10,070,045	-37.2%	-18.9%
Megaplier	15,492,622	13,198,750	11,708,492	-3,784,130	-1,490,258	-24.4%	-11.3%
Daily 4	33,825,630	34,779,569	36,715,308	2,889,678	1,935,739	8.5%	5.6%
Daily 4 Sum It Up	2,014,932	1,808,942	1,968,021	-46,912	159,079	-2.3%	8.8%
Powerball	71,942,282	292,684,985	85,470,883	13,528,601	-207,214,102	18.8%	-70.8%
Power Play	9,379,466	30,545,954	12,114,633	2,735,167	-18,431,321	29.2%	-60.3%
All or Nothing	15,444,862	12,427,662	11,358,696	-4,086,166	-1,068,966	-26.5%	-8.6%
Monopoly	1 2,656,530	-	-	-2,656,530	-	-100.0%	-
Texas Triple Chance	-	11,095,105	6,153,140	6,153,140	-4,941,965	-	-44.5%
Total	\$ 1,752,725,298	\$ 2,064,311,999	\$ 1,859,398,666	\$ 106,673,368	\$ -204,913,333	6.1%	-9.9%

* 3 extra days

** 2 extra days

1 Monopoly sales were suspended after draw on 12/12/14

Texas Lottery Commission
Fiscal Year to Date Cumulative Average Sales Comparison
Unaudited

Through the Week Ending 1/21/2017 (21 Weeks)

Sales by Game	FY 2015	FY 2016	FY 2017
Scratch Tickets	\$ 9,139,024	\$ 9,733,699	\$ 10,218,132
Lotto Texas	332,850	366,295	304,620
Lotto Extra	50,493	61,824	58,511
Pick 3	682,981	690,124	677,940
Pick 3 Sum It Up	13,111	13,907	12,874
Cash Five	136,568	127,862	120,567
Texas Two Step	145,967	140,740	150,740
Mega Millions	471,398	367,418	302,137
Megaplier	106,114	91,026	81,878
Daily 4	231,682	239,859	256,750
Daily 4 Sum It Up	13,801	12,475	13,762
Powerball	492,755	2,018,517	597,698
Power Play	64,243	210,662	84,718
All or Nothing	105,787	85,708	79,431
Monopoly	** 48,301	-	-
Texas Triple Chance	- *	93,236	43,029
Total	\$ <u>12,035,073</u>	\$ <u>14,253,353</u>	\$ <u>13,002,788</u>

thru 1/24/2015

thru 1/23/2016

thru 1/21/2017

146 days

145 days

143 days

** 55 days

* 119 days

Texas Lottery Commission
Fiscal Year Over Year Change in Sales
Unaudited
FY 2017 Compared to FY 2016

			SCRATCH TICKETS				DRAW GAMES				TOTAL SALES			
FY 2017			FY 2017	FY 2016	Difference	% change - Cumulative Sales	FY 2017	FY 2016	Difference	% change - Cumulative Sales	FY 2017	FY 2016	Difference	% change - Cumulative Sales
Week	Week Ending													
1	9/3/2016 *		\$32,980,266	\$49,534,249	(\$16,553,983)	-33.4%	\$10,218,656	\$17,091,724	(\$6,873,068)	-40.2%	\$43,198,922	\$66,625,973	(\$23,427,051)	-35.2%
2	9/10/2016		\$65,952,418	\$61,566,291	\$4,386,127	7.1%	\$19,635,377	\$20,630,922	(\$995,545)	-4.8%	\$85,587,795	\$82,197,213	\$3,390,583	4.1%
3	9/17/2016		\$66,196,270	\$63,530,657	\$2,665,613	4.2%	\$20,915,290	\$20,327,253	\$588,037	2.9%	\$87,111,560	\$83,857,910	\$3,253,650	3.9%
4	9/24/2016		\$64,383,005	\$61,731,400	\$2,651,605	4.3%	\$17,451,165	\$22,252,290	(\$4,801,125)	-21.6%	\$81,834,170	\$83,983,690	(\$2,149,520)	-2.6%
5	10/1/2016		\$67,349,951	\$67,048,415	\$301,536	0.4%	\$17,519,852	\$25,436,791	(\$7,916,939)	-31.1%	\$84,869,803	\$92,485,206	(\$7,615,403)	-8.2%
6	10/8/2016		\$71,598,690	\$66,049,706	\$5,548,984	8.4%	\$18,211,107	\$18,138,977	\$72,130	0.4%	\$89,809,797	\$84,188,683	\$5,621,114	6.7%
7	10/15/2016		\$69,444,762	\$65,073,593	\$4,371,169	6.7%	\$18,075,261	\$17,776,414	\$298,847	1.7%	\$87,520,023	\$82,850,007	\$4,670,016	5.6%
8	10/22/2016		\$69,317,066	\$64,087,437	\$5,229,629	8.2%	\$18,422,336	\$18,450,464	(\$28,128)	-0.2%	\$87,739,402	\$82,537,901	\$5,201,501	6.3%
9	10/29/2016		\$69,729,599	\$66,025,374	\$3,704,225	5.6%	\$18,535,248	\$19,568,150	(\$1,032,902)	-5.3%	\$88,264,847	\$85,593,524	\$2,671,324	3.1%
10	11/5/2016		\$73,451,702	\$68,137,192	\$5,314,510	7.8%	\$20,151,939	\$20,398,351	(\$246,413)	-1.2%	\$93,603,641	\$88,535,543	\$5,068,098	5.7%
11	11/12/2016		\$70,998,320	\$65,449,428	\$5,548,892	8.5%	\$19,925,460	\$20,169,382	(\$243,923)	-1.2%	\$90,923,780	\$85,618,810	\$5,304,970	6.2%
12	11/19/2016		\$75,265,196	\$68,364,421	\$6,900,775	10.1%	\$21,424,637	\$17,174,606	\$4,250,031	24.7%	\$96,689,833	\$85,539,027	\$11,150,806	13.0%
13	11/26/2016		\$68,983,157	\$61,091,628	\$7,891,529	12.9%	\$24,223,331	\$17,168,993	\$7,054,338	41.1%	\$93,206,488	\$78,260,621	\$14,945,867	19.1%
14	12/3/2016		\$72,688,514	\$67,830,827	\$4,857,687	7.2%	\$17,653,328	\$19,252,418	(\$1,599,090)	-8.3%	\$90,341,842	\$87,083,245	\$3,258,597	3.7%
15	12/10/2016		\$71,676,549	\$68,324,452	\$3,352,097	4.9%	\$18,150,590	\$19,529,408	(\$1,378,819)	-7.1%	\$89,827,139	\$87,853,860	\$1,973,279	2.2%
16	12/17/2016		\$73,909,726	\$71,041,258	\$2,868,468	4.0%	\$19,814,333	\$20,824,840	(\$1,010,507)	-4.9%	\$93,724,059	\$91,866,098	\$1,857,962	2.0%
17	12/24/2016		\$77,369,179	\$78,125,965	(\$756,786)	-1.0%	\$19,276,415	\$22,586,417	(\$3,310,002)	-14.7%	\$96,645,594	\$100,712,382	(\$4,066,788)	-4.0%
18	12/31/2016		\$80,868,854	\$76,712,975	\$4,155,879	5.4%	\$19,289,161	\$27,972,880	(\$8,683,720)	-31.0%	\$100,158,015	\$104,685,855	(\$4,527,841)	-4.3%
19	1/7/2017		\$73,328,624	\$77,136,541	(\$3,807,917)	-4.9%	\$18,611,644	\$127,289,478	(\$108,677,835)	-85.4%	\$91,940,268	\$204,426,019	(\$112,485,752)	-55.0%
20	1/14/2017		\$73,471,643	\$73,858,865	(\$387,222)	-0.5%	\$20,351,397	\$140,104,126	(\$119,752,729)	-85.5%	\$93,823,040	\$213,962,991	(\$120,139,951)	-56.1%
21	1/21/2017		\$72,229,342	\$70,665,700	\$1,563,642	2.2%	\$20,349,310	\$20,781,745	(\$432,435)	-2.1%	\$92,578,652	\$91,447,445	\$1,131,208	1.2%
22	1/28/2017			\$71,051,685				\$20,433,401				\$91,485,086		
23	2/4/2017			\$78,458,428				\$21,274,800				\$99,733,228		
24	2/11/2017			\$80,754,850				\$21,391,919				\$102,146,769		
25	2/18/2017			\$80,078,271				\$21,911,382				\$101,989,653		
26	2/25/2017			\$78,832,217				\$22,823,086				\$101,655,303		
27	3/4/2017			\$80,019,524				\$23,146,906				\$103,166,430		
28	3/11/2017			\$78,524,214				\$19,311,625				\$97,835,839		
29	3/18/2017			\$75,446,960				\$18,001,000				\$93,447,960		
30	3/25/2017			\$75,293,759				\$18,553,964				\$93,847,723		
31	4/1/2017			\$79,316,221				\$19,482,563				\$98,798,784		
32	4/8/2017			\$74,560,898				\$20,100,629				\$94,661,527		
33	4/15/2017			\$74,056,586				\$20,677,413				\$94,733,999		
34	4/22/2017			\$73,110,080				\$20,313,339				\$93,423,419		
35	4/29/2017			\$73,448,019				\$22,666,626				\$96,114,645		
36	5/6/2017			\$77,593,399				\$33,262,968				\$110,856,367		
37	5/13/2017			\$75,263,676				\$20,250,149				\$95,513,825		
38	5/20/2017			\$74,274,808				\$19,605,983				\$93,880,791		
39	5/27/2017			\$71,562,728				\$20,150,232				\$91,712,960		
40	6/3/2017			\$73,085,109				\$21,067,550				\$94,152,659		
41	6/10/2017			\$70,593,768				\$21,389,794				\$91,983,562		
42	6/17/2017			\$69,501,864				\$22,402,713				\$91,904,577		

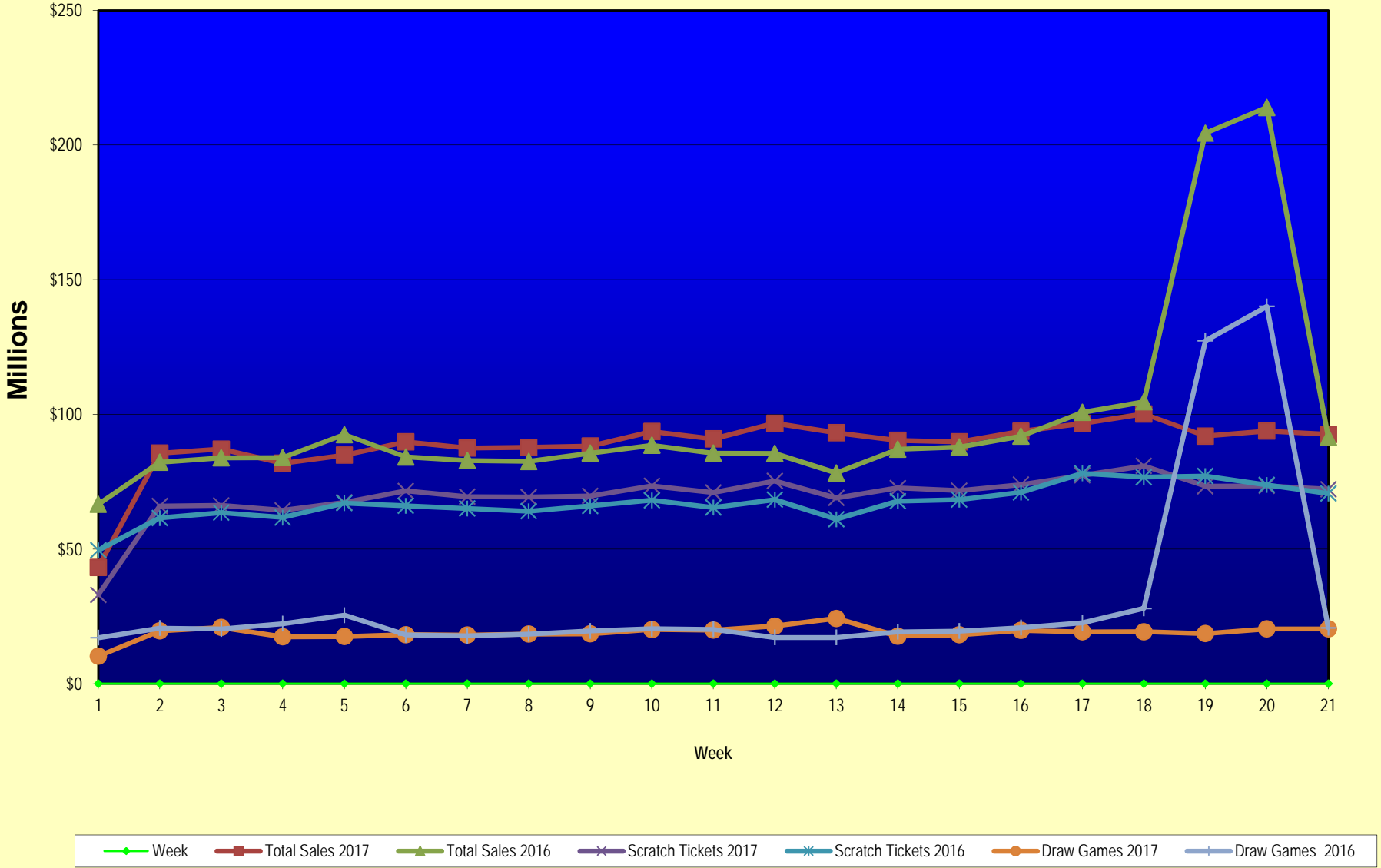
Texas Lottery Commission
Fiscal Year Over Year Change in Sales
Unaudited
FY 2017 Compared to FY 2016

			SCRATCH TICKETS				DRAW GAMES				TOTAL SALES			
FY 2017			FY 2017	FY 2016	Difference	% change - Cumulative Sales	FY 2017	FY 2016	Difference	% change - Cumulative Sales	FY 2017	FY 2016	Difference	% change - Cumulative Sales
Week	Week	Ending												
43	6/24/2017			\$69,243,660				\$24,290,311				\$93,533,971		
44	7/1/2017			\$70,782,313				\$29,331,406				\$100,113,719		
45	7/8/2017			\$67,636,625				\$38,673,314				\$106,309,939		
46	7/15/2017			\$68,064,720				\$21,311,938				\$89,376,658		
47	7/22/2017			\$69,509,821				\$21,982,689				\$91,492,510		
48	7/29/2017			\$64,486,970				\$30,699,953				\$95,186,923		
49	8/5/2017			\$69,206,183				\$18,277,075				\$87,483,258		
50	8/12/2017			\$67,165,060				\$18,101,640				\$85,266,700		
51	8/19/2017			\$69,067,938				\$18,981,681				\$88,049,619		
52	8/26/2017			\$67,821,162				\$19,606,571				\$87,427,733		
	8/31/2017 **			\$36,609,542				\$9,310,254				\$45,919,796		
Total thru Current Week			\$1,461,192,833	\$1,411,386,374	\$49,806,459	3.5%	\$398,205,833	\$652,925,625	(\$254,719,792)	-39.0%	\$1,859,398,666	\$2,064,311,999	(\$204,913,333)	-9.9%
Fiscal Year Total			\$1,461,192,833	\$3,715,807,432			\$398,205,833	\$1,351,710,491			\$1,859,398,666	\$5,067,517,923		

* FY 17 includes 3 days; FY 16 includes 5 days

** FY 17 includes 5 days; FY 16 includes 4 days

Texas Lottery Commission Fiscal Year Over Year Change in Sales



Note: Week 1 is not a full week of sales as this report is prepared on a Fiscal Year basis.

Texas Lottery Commission
Scratch Tickets by Price Point
Sales, Prize Expense, Sales Contribution and Payout Percentage With Year Over Year Changes
Unaudited

Fiscal Year	Price Point	# of Active Games	FY Sales	% of Scratch Ticket Sales	Year over Year Change in Sales	FY Prize Expense	Year over Year Change in Prize Expense	FY Sales Contribution	Year over Year Change in Contribution	Average Prize Payout %	Year over Year Change in Payout %
2016	\$1.00	15	65,010,036	4.6%		39,254,252		25,755,784		60.4%	-0.2%
Through	\$2.00	27	146,799,086	10.4%		95,600,855		51,198,231		65.1%	-0.6%
1/23/2016	\$3.00	11	108,508,707	7.7%		71,423,081		37,085,626		65.8%	-0.1%
	\$5.00	44	465,702,725	33.0%		316,413,079		149,289,646		67.9%	0.0%
	\$10.00	15	272,993,790	19.3%		191,496,399		81,497,391		70.1%	-0.2%
	\$20.00	10	284,426,180	20.2%		213,163,208		71,262,972		74.9%	0.0%
	\$50.00	3	67,945,850	4.8%		52,844,624		15,101,226		77.8%	0.0%
Total		125	\$1,411,386,374			\$980,195,499		\$431,190,876		69.4%	0.0%
2017	\$1.00	18	58,264,431	4.0%		35,176,078		23,088,353		60.4%	0.2%
Through	\$2.00	24	125,271,448	8.6%		81,564,426		43,707,022		65.1%	-0.1%
1/21/2017	\$3.00	9	100,255,479	6.9%		66,088,605		34,166,874		65.9%	0.0%
	\$5.00	45	466,161,705	31.9%		316,750,668		149,411,037		67.9%	0.0%
	\$10.00	17	310,898,960	21.3%		219,147,468		91,751,492		70.5%	0.5%
	\$20.00	12	325,306,060	22.3%		243,762,728		81,543,332		74.9%	0.0%
	\$50.00	4	75,034,750	5.1%		58,385,902		16,648,848		77.8%	0.0%
Total		129	\$1,461,192,833			\$1,020,875,875		\$440,316,958		69.9%	0.4%
Variance	\$1.00	3	-6,745,605		-10.4%	-4,078,174	-10.4%	-2,667,431	-10.4%	-0.01%	
2017 to	\$2.00	-3	-21,527,638		-14.7%	-14,036,428	-14.7%	-7,491,210	-14.6%	-0.01%	
2016	\$3.00	-2	-8,253,228		-7.6%	-5,334,476	-7.5%	-2,918,752	-7.9%	0.10%	
	\$5.00	1	458,980		0.1%	337,589	0.1%	121,391	0.1%	0.01%	
	\$10.00	2	37,905,170		13.9%	27,651,069	14.4%	10,254,101	12.6%	0.34%	
	\$20.00	2	40,879,880		14.4%	30,599,520	14.4%	10,280,360	14.4%	-0.01%	
	\$50.00	1	7,088,900		10.4%	5,541,278	10.5%	1,547,622	10.2%	0.04%	
Total		4	\$49,806,459		3.5%	\$40,680,377	4.2%	\$9,126,082	2.1%	0.42%	

Notes - Scratch Ticket Variances

Texas Lottery Commission
Scratch Tickets by Price Point
Sales, Prize Expense, Sales Contribution and Payout Percentage With Year Over Year Changes
Unaudited

			FY 2017		FY 2016	Difference
Sales	\$1 - \$5		\$749,953,063		\$786,020,554	-\$36,067,491
Prize Exp.	\$1 - \$5		\$499,579,777		\$522,691,267	-\$23,111,490
Sales Cont.	\$1 - \$5		\$250,373,286		\$263,329,287	-\$12,956,001
Prize Exp. %	\$1 - \$5		66.6%		66.5%	0.1%
			FY 2017		FY 2016	Difference
Sales	\$10 - \$50		\$711,239,770		\$625,365,820	\$85,873,950
Prize Exp.	\$10 - \$50		\$521,296,098		\$457,504,232	\$63,791,867
Sales Cont.	\$10 - \$50		\$189,943,672		\$167,861,588	\$22,082,083
Prize Exp. %	\$10 - \$50		73.3%		73.2%	0.1%
			FY 2017		FY 2016	Difference
Sales	Scratch		\$1,461,192,833		\$1,411,386,374	\$49,806,459
Prize Exp.	Scratch		\$1,020,875,875		\$980,195,499	\$40,680,377
Sales Cont.	Scratch		\$440,316,958		\$431,190,876	\$9,126,082
Prize Exp. %	Scratch		69.9%		69.4%	0.4%

			FY 2017		FY 2016	Difference
Sales	\$1 - \$10		\$1,060,852,023		\$1,059,014,344	\$1,837,679
Prize Exp.	\$1 - \$10		\$718,727,245		\$714,187,666	\$4,539,579
Sales Cont.	\$1 - \$10		\$342,124,778		\$344,826,678	-\$2,701,900
Prize Exp. %	\$1 - \$10		67.7%		67.4%	0.3%
			FY 2017		FY 2016	Difference
Sales	\$20 - \$50		\$400,340,810		\$352,372,030	\$47,968,780
Prize Exp.	\$20 - \$50		\$302,148,630		\$266,007,833	\$36,140,798
Sales Cont.	\$20 - \$50		\$98,192,180		\$86,364,197	\$11,827,982
Prize Exp. %	\$20 - \$50		75.5%		75.5%	0.0%
			FY 2017		FY 2016	Difference
Sales	Scratch		\$1,461,192,833		\$1,411,386,374	\$49,806,459
Prize Exp.	Scratch		\$1,020,875,875		\$980,195,499	\$40,680,377
Sales Cont.	Scratch		\$440,316,958		\$431,190,876	\$9,126,082
Prize Exp. %	Scratch		69.9%		69.4%	0.4%

Texas Lottery Commission
 Weekly Sales Summary
 & Comparison to Previous Week
 Unaudited

	Week Ending 1/21/2017		Week Ending 1/14/2017			
	<u>THIS WEEK</u>	% of Sales	<u>LAST WEEK</u>	% of Sales	<u>\$ change</u>	<u>% change</u>
Total Sales	<u>\$92,578,652</u>		<u>\$93,823,040</u>		<u>-\$1,244,388</u>	-1.33%
Scratch Tickets	<u>\$72,229,342</u>	78.0%	<u>\$73,471,643</u>	78.3%	<u>-\$1,242,301</u>	-1.69%
Lotto	\$2,187,377	2.4%	\$2,225,676	2.4%	-\$38,299	-1.72%
Lotto Extra	\$426,689	0.5%	\$433,448	0.5%	-\$6,759	-1.56%
Pick 3	\$4,773,213	5.2%	\$5,078,795	5.4%	-\$305,582	-6.02%
Pick 3 Sum It Up	\$89,986	0.1%	\$95,352	0.1%	-\$5,366	-5.63%
Cash Five	\$839,794	0.9%	\$857,133	0.9%	-\$17,339	-2.02%
Texas Two Step	\$1,221,317	1.3%	\$949,656	1.0%	\$271,661	28.61%
Mega Millions	\$2,924,743	3.2%	\$2,863,206	3.1%	\$61,537	2.15%
Megaplier	\$731,997	0.8%	\$730,587	0.8%	\$1,410	0.19%
Daily 4	\$1,874,302	2.0%	\$1,930,373	2.1%	-\$56,071	-2.90%
Daily 4 Sum It Up	\$108,260	0.1%	\$112,082	0.1%	-\$3,822	-3.41%
Powerball	\$3,809,290	4.1%	\$3,684,764	3.9%	\$124,526	3.38%
Power Play	\$558,760	0.6%	\$544,661	0.6%	\$14,099	2.59%
All or Nothing	\$531,350	0.6%	\$562,100	0.6%	-\$30,750	-5.47%
Texas Triple Chance	\$272,232	0.3%	\$283,564	0.3%	-\$11,332	-4.00%
Total Draw Game Sales	<u>\$20,349,310</u>		<u>\$20,351,397</u>		<u>-\$2,087</u>	-0.01%

* Totals may not sum due to rounding.

Texas Lottery Commission
Weekly Sales Summary
Unaudited

SCRATCH TICKETS
TOP TEN SELLING GAMES

For the week ending: 1/21/2017

Rank	Price Point	Game	Sales (Millions)
1	\$ 10	50X THE CASH	\$ 5.188
2	\$ 20	100X THE CASH	\$ 3.721
3	\$ 5	20X THE CASH	\$ 3.491
4	\$ 10	CASHWORD MULTIPLIER	\$ 3.458
5	\$ 5	SUPER LOTERIA	\$ 3.301
6	\$ 5	\$500 FRENZY	\$ 2.949
7	\$ 50	\$7,500,000 ULTIMATE CASH	\$ 2.807
8	\$ 10	\$1 MILLION HIGH ROLLER	\$ 2.723
9	\$ 3	BONUS CASHWORD	\$ 2.181
10	\$ 10	\$200 MILLION PAYOUT	\$ 2.006

Texas Lottery Commission
Prize Payout Tracking Report
Unaudited

Through the week ending: 1/21/2017

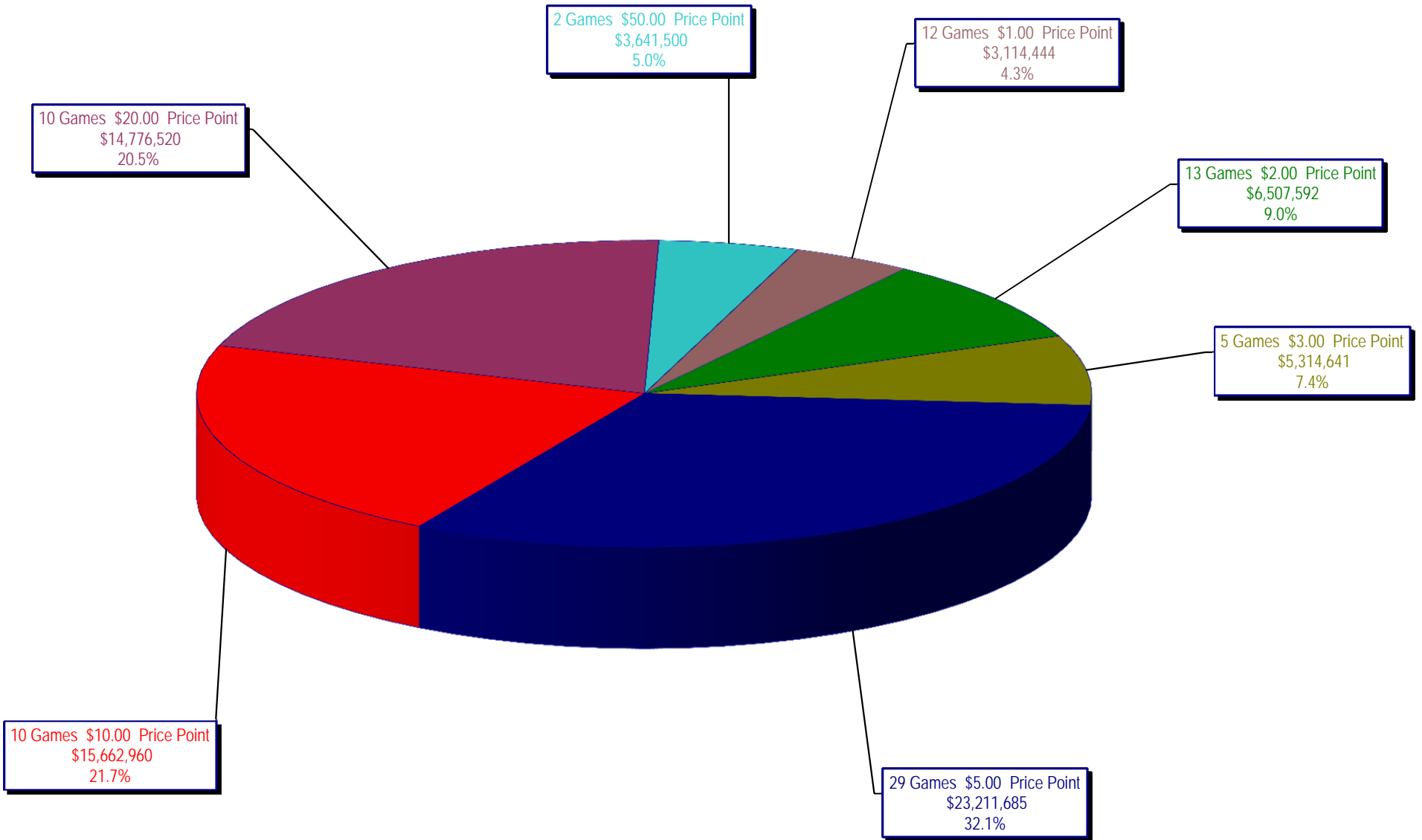
Draw Game Sales

		FY Sales Through Week Ending 1/21/2017		FY Prize Expense Through Week Ending 1/21/2017	Actual* Prize Payout	Base Payout (Prize Pool)
Lotto	\$	43,560,686	\$	21,787,895	50.02%	50.00%
Lotto Extra		8,367,097		4,484,118	53.59%	53.70%
Pick 3		96,945,426		49,352,790	50.91%	50.00%
Pick 3 Sum It Up		1,840,948		820,818	44.59%	50.00%
Cash Five		17,241,098		8,620,579	50.00%	50.00%
Texas Two Step		21,555,785		11,146,553	51.71%	50.00%
Mega Millions		43,205,621		22,019,154	50.96%	50.00%**
Megaplier		11,708,492		5,853,087	49.99%	N/A
Daily 4		36,715,308		22,143,675	60.31%	50.00%
Daily 4 Sum It Up		1,968,021		2,403,677	122.14%	50.00%
Powerball		85,470,883		42,753,701	50.02%	50.00%**
Power Play		12,114,633		6,060,990	50.03%	N/A
All or Nothing		11,358,696		6,076,460	53.50%	55.98%
Texas Triple Chance		6,153,140		3,097,220	50.34%	54.42%
Totals	\$	398,205,833	\$	206,620,716	51.89%	

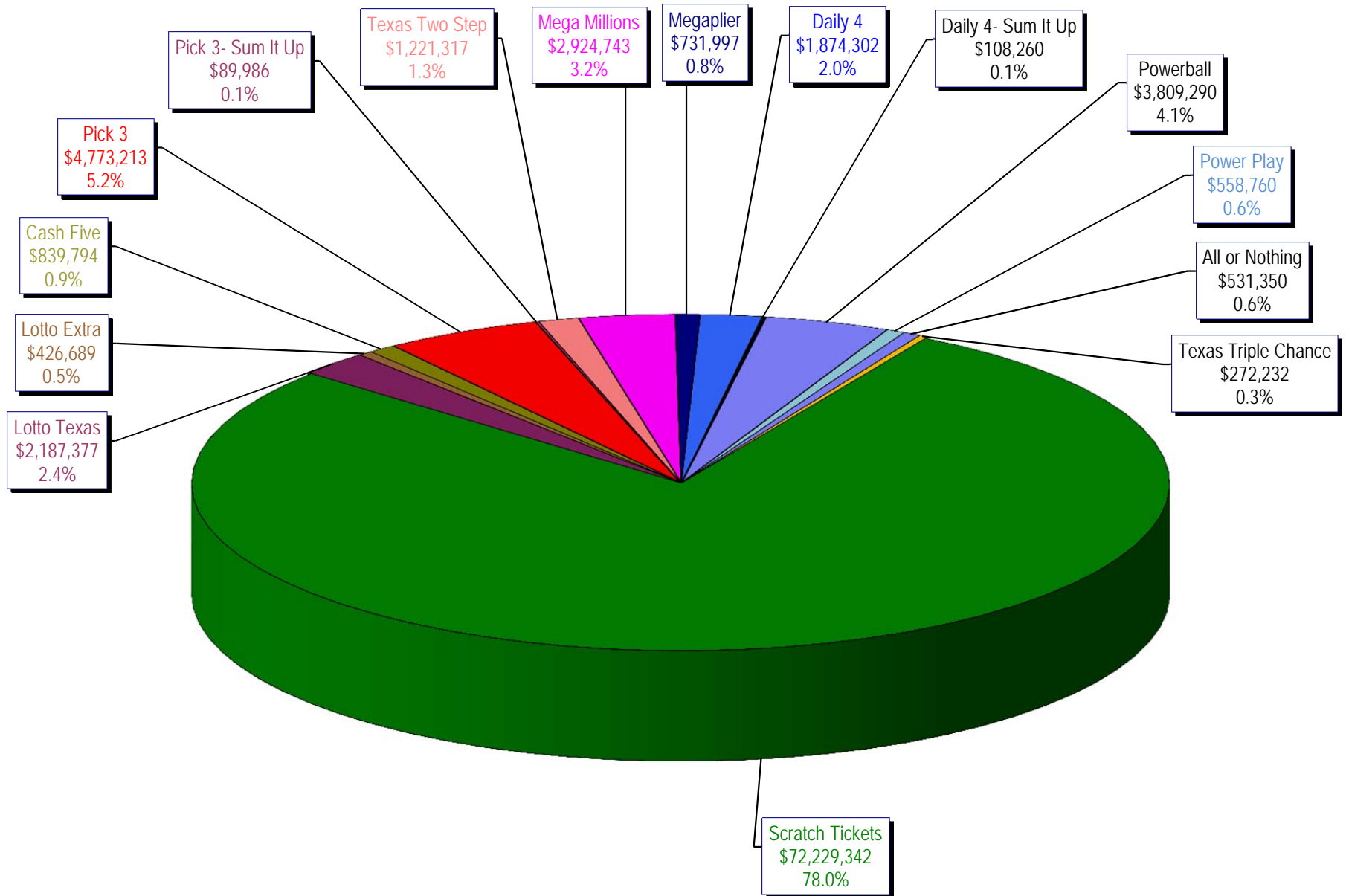
* Before Unclaimed Prizes

**Estimated; depends on # of guaranteed prizes won in Texas

Texas Lottery Commission
Scratch Ticket Sales
For the week ending 1/21/2017
(Unaudited)



Texas Lottery Commission
All Game Sales
For the week ending 1/21/2017
(Unaudited)



Texas Lottery Commission - Weekly Sales Summary for FY 2017 (Unaudited)

Week Ended	Scratch Tickets	New Games & Dates	Lotto Texas	Jackpot		Lotto Extra	Pick 3	Pick 3 Sum It Up	Cash Five	Texas Two Step	Jackpot		Mega Millions	Jackpot		Megaplier	Daily 4	Daily 4 Sum It Up	Powerball	Jackpot		Power Play	All or Nothing	Texas Triple Chance	Total	Per Cap.	
				W	S						M	TH		T	F					W	S						
9/3/2016*	69,589,808	0	2,106,552	8.75	9.25	402,665	4,798,985	92,214	843,135	810,947	200	200	2,331,141	84	92	631,299	1,788,614	96,398	4,189,234	154	170	603,430	528,102	306,194	89,118,717	3.24	
9/10/2016	65,952,418	1810 (\$1.N); 1809 (\$1.N); 1811 (\$5.N) - 9/06/16	2,095,828	9.75	10.25	399,944	4,590,651	86,697	818,614	862,148	225	275	2,490,552	101	111	655,066	1,647,119	87,455	4,473,836	186	205	628,810	506,718	291,940	85,587,795	3.12	
9/17/2016	66,196,270	0	2,127,440	11	11.75	405,936	4,553,039	86,110	822,240	1,180,444	400	550	2,661,252	122	133	692,583	1,705,629	91,610	5,096,928	222	244	696,626	503,466	291,988	87,111,560	3.17	
9/24/2016	64,383,005	1793 (\$2.N); 1782 (\$5.N); 1781 (\$10.N) - 9/19/16	2,141,721	12.25	13	404,127	4,551,066	83,958	811,604	1,465,789	700	900	1,733,288	15	20	489,347	1,680,793	90,386	2,790,676	40	50	429,512	503,041	275,858	81,834,170	2.98	
10/1/2016	67,349,951	0	2,203,652	13.25	14	414,603	4,642,047	91,016	857,979	816,836	200	225	1,840,801	25	30	515,384	1,688,464	88,184	2,960,772	60	70	455,619	589,964	354,532	84,869,803	3.09	
10/8/2016	71,598,690	1772 (\$1.N); 1770 (\$2.N); 1813 (\$5.N); 1779 (\$20.N) - 10/03/16	2,211,941	14.5	15.5	419,062	4,900,537	94,965	867,520	849,234	200	225	1,925,289	35	41	540,723	1,780,544	92,908	3,109,092	80	91	471,027	611,898	336,368	89,809,797	3.27	
10/15/2016	69,444,762	0	2,207,002	16	16.75	416,802	4,549,017	89,171	836,548	1,024,493	300	425	1,780,458	49	15	496,567	1,679,519	87,007	3,499,528	107	122	510,617	577,343	321,190	87,520,023	3.19	
10/22/2016	69,317,066	1814 (\$3.N); 1815 (\$5.N); 1832 (\$50.N) - 10/17/16	2,222,089	17	18	420,632	4,457,898	84,115	836,942	1,260,293	575	750	1,714,985	20	25	482,408	1,636,471	83,009	3,800,444	136	151	542,655	564,808	315,588	87,739,402	3.19	
10/29/2016	69,729,599	0	2,269,908	18.5	19.25	430,487	4,511,234	86,114	833,125	779,029	200	200	1,781,093	30	35	500,203	1,711,520	88,083	4,097,116	164	180	575,614	565,102	306,622	88,264,847	3.21	
11/5/2016	73,451,702	0	2,168,782	20	5	414,167	4,996,360	97,149	859,798	796,978	200	200	1,904,765	40	47	534,014	1,913,301	100,223	4,796,408	198	217	660,205	591,246	318,544	93,603,641	3.41	
11/12/2016	70,998,320	1816 (\$2.N); 1808 (\$5.N); 1817 (\$5.N); 1818 (\$10.N) - 11/07/16	1,893,513	5.25	5.5	368,470	4,642,196	89,581	833,195	869,408	225	275	1,964,313	54	65	541,639	1,741,306	90,176	5,313,351	236	258	715,597	563,280	299,436	90,923,780	3.31	
11/19/2016	75,265,196	1819 (\$1.N); 1820 (\$5.N); 1869 (\$10.N) - 11/16/16	1,924,291	5.75	6	376,977	4,595,331	87,939	830,211	1,078,765	400	550	2,072,033	73	82	567,597	1,715,227	91,335	6,391,094	293	320	836,372	557,058	300,408	96,689,833	3.52	
11/26/2016	68,983,157	0	1,945,264	6.25	6.5	383,703	4,472,018	83,761	795,696	737,931	200	225	1,698,370	15	20	487,160	1,649,794	84,195	9,839,524	359	403	1,235,062	527,328	283,526	93,206,488	3.39	
12/3/2016	72,688,514	0	1,989,472	6.75	7	386,573	4,901,443	91,365	857,900	1,002,319	275	375	1,761,923	25	30	499,193	1,823,528	94,278	2,932,322	40	54	444,551	569,036	299,426	90,341,842	3.29	
12/10/2016	71,676,549	1807 (\$5.N); 1866 (\$10.N); 1822 (\$20.N) - 12/05/16	2,006,953	7.25	7.5	388,230	4,748,391	88,668	849,940	1,337,879	525	700	1,830,451	35	43	505,981	1,812,622	88,690	3,176,570	67	85	475,269	551,930	289,016	89,827,139	3.27	
12/17/2016	73,909,726	0	2,048,592	7.75	8	398,632	4,778,144	88,676	854,061	1,906,792	900	1,125	1,966,377	51	59	539,946	1,844,818	94,354	3,892,738	100	119	561,900	551,086	288,218	93,724,059	3.41	
12/24/2016	77,369,179	1823 (\$2.N); 1824 (\$5.N) - 12/19/16	2,210,042	8.25	8.75	421,128	4,973,874	91,323	861,510	1,331,122	1,375	200	2,200,791	67	76	590,601	2,035,860	117,672	3,119,154	40	50	473,229	558,224	291,886	96,645,594	3.52	
12/31/2016	80,868,854	0	2,282,841	9.5	10.25	440,711	4,899,905	94,021	861,849	887,304	225	275	2,362,970	85	96	630,614	2,004,547	116,201	3,351,922	60	70	506,969	555,832	293,476	100,158,015	3.65	
1/7/2017	73,328,624	1825 (\$1.N); 1826 (\$5.N); 1827 (\$10.N) - 01/03/17	2,097,687	10.75	11.5	408,605	4,745,822	91,405	842,694	819,153	200	200	2,524,889	105	117	654,478	1,898,406	110,548	3,107,618	80	94	474,348	550,422	285,570	91,940,268	3.35	
1/14/2017	73,471,643	0	2,225,676	12	12.5	433,448	5,078,795	95,352	857,133	949,656	225	300	2,863,206	126	137	730,587	1,930,373	112,082	3,684,764	106	121	544,661	562,100	283,564	93,823,040	3.42	
1/21/2017	72,229,342	1775 (\$2.N); 1760 (\$3.N); 1863 (\$5.N); 1864 (\$5.N); 1865 (\$5.N); 1829 (\$20.N) - 01/16/17	2,187,377	13.25	14	426,689	4,773,213	89,986	839,794	1,221,317	425	575	2,924,743	150	162	731,997	1,874,302	108,260	3,809,290	135	153	558,760	531,350	272,232	92,578,652	3.37	
weekly change	-1.7%		-1.7%			-1.6%	-6.0%	-5.6%	-2.0%	28.6%			2.1%			0.2%	-2.9%	-3.4%	3.4%		2.6%		-5.5%	-4.0%	-1.3%		
Calendar Year to date	219,029,609		6,510,740			1,268,742	14,597,830	276,743	2,539,621	2,990,126			8,312,838			2,117,062	5,703,081	330,890	10,601,672			1,577,769	1,643,872	841,366	278,341,959	100.0%	
Fiscal Year to date 2017	1,461,192,833		43,560,686			8,367,097	96,945,426	1,840,948	17,241,098	21,555,785			43,205,621			11,708,492	36,715,308	1,968,021	85,470,883			12,114,633	11,358,696	6,153,140	1,859,398,666	100.0%	
*Full week includes 4 days from FY16																											