



WEEKLY SALES SUMMARY

Unaudited

Week Ending: 2/13/2021

**Texas Lottery Commission
Fiscal Year to Date Sales Comparison
Unaudited**

Through the Week Ending: 2/13/2021 (24 weeks)

Sales by Game	FY 2019 *	FY 2020 **	FY 2021	\$ Change		% Change	
				FY 2021 to FY 2019	FY 2021 to FY 2020	FY 2021 to FY 2019	FY 2021 to FY 2020
Scratch Tickets	\$ 2,188,108,085	\$ 2,317,965,627	\$ 2,807,490,198	\$ 619,382,113	\$ 489,524,571	28.3%	21.1%
Lotto Texas	49,758,825	49,949,273	68,185,939	18,427,114	18,236,666	37.0%	36.5%
Lotto Extra	11,999,996	13,027,369	19,652,664	7,652,668	6,625,295	63.8%	50.9%
Pick 3	114,539,762	109,866,787	125,171,562	10,631,800	15,304,775	9.3%	13.9%
Pick 3 Sum It Up	2,279,027	-	-	-2,279,027	-	-100.0%	-
Pick 3 Fireball	-	7,894,391	10,622,574	10,622,574	2,728,184	-	34.6%
Cash Five	21,899,342	20,744,474	23,375,503	1,476,161	2,631,029	6.7%	12.7%
Texas Two Step	28,037,421	28,459,696	28,163,101	125,680	-296,595	0.4%	-1.0%
Mega Millions	236,765,774	95,167,992	194,338,188	-42,427,586	99,170,196	-17.9%	104.2%
Megaplier	33,277,981	15,880,883	31,705,789	-1,572,192	15,824,906	-4.7%	99.6%
MM Just the Jackpot	1,056,584	383,739	777,801	-278,783	394,062	-26.4%	102.7%
Daily 4	51,661,303	51,121,588	53,819,613	2,158,310	2,698,026	4.2%	5.3%
Daily 4 Sum It Up	2,814,725	-	-	-2,814,725	-	-100.0%	-
Daily 4 Fireball	-	6,911,825	8,427,745	8,427,745	1,515,921	-	21.9%
Powerball	139,615,017	95,414,238	155,789,306	16,174,289	60,375,068	11.6%	63.3%
Power Play	21,308,414	15,984,615	26,105,753	4,797,339	10,121,138	22.5%	63.3%
All or Nothing	14,008,479	15,685,751	19,299,114	5,290,635	3,613,363	37.8%	23.0%
Total	\$ 2,917,130,734	\$ 2,844,458,247	\$ 3,572,924,850	\$ 655,794,116	\$ 728,466,603	22.5%	25.6%

* 3 extra days

** 2 extra days

Texas Lottery Commission
Fiscal Year Over Year Change in Sales
Unaudited
FY 2021 Compared to FY 2020

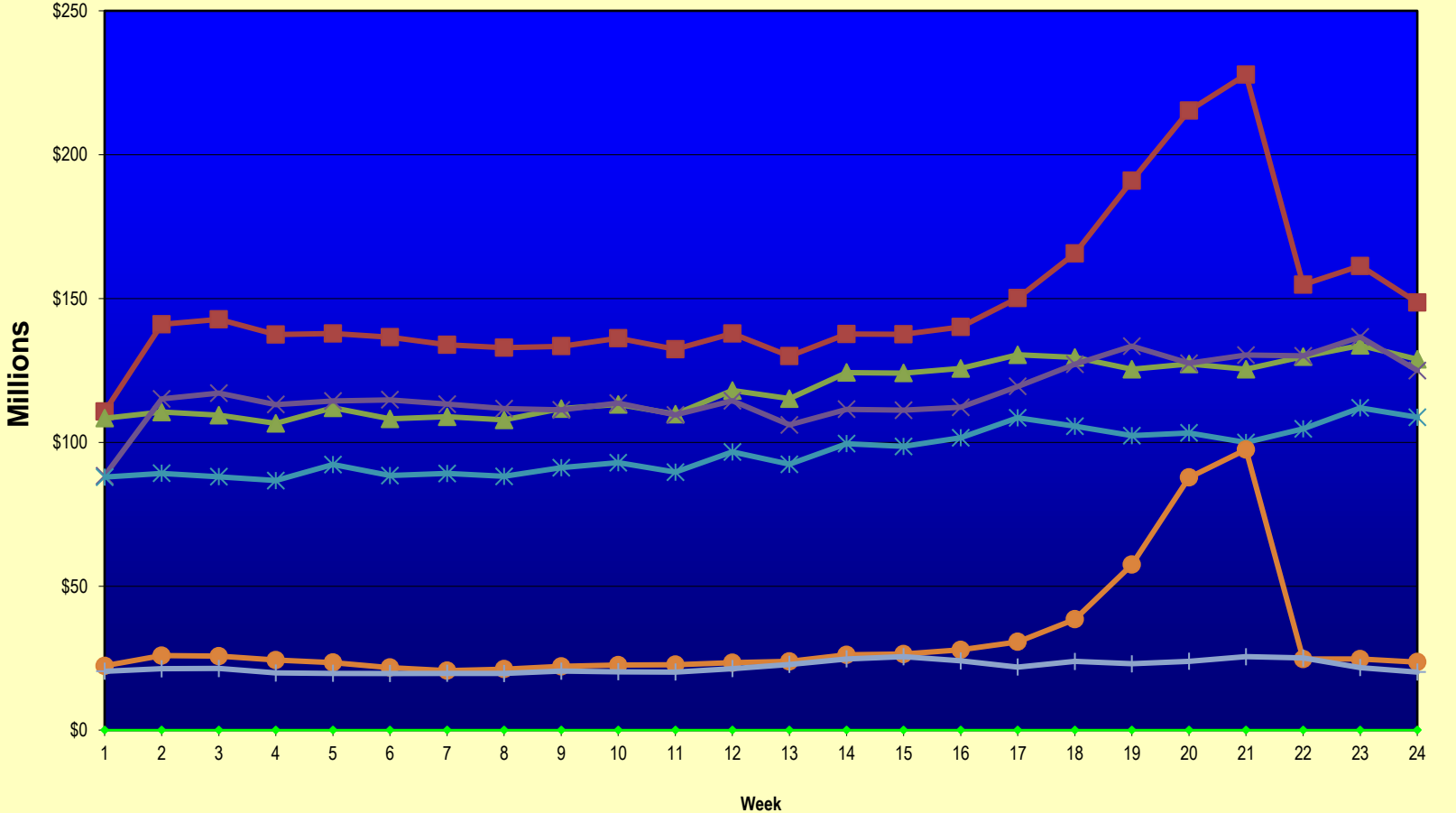
		SCRATCH TICKETS				DRAW GAMES				TOTAL SALES			
Week	FY 2021 Week Ending	FY 2021	FY 2020	Difference	% change - Cumulative Sales	FY 2021	FY 2020	Difference	% change - Cumulative Sales	FY 2021	FY 2020	Difference	% change - Cumulative Sales
1	9/5/2020*	\$88,381,162	\$87,955,988	\$425,174	0.5%	\$22,327,441	\$20,447,416	\$1,880,026	9.2%	\$110,708,603	\$108,403,404	\$2,305,200	2.1%
2	9/12/2020	\$115,145,117	\$89,240,373	\$25,904,744	29.0%	\$25,865,986	\$21,301,605	\$4,564,381	21.4%	\$141,011,103	\$110,541,978	\$30,469,125	27.6%
3	9/19/2020	\$117,098,316	\$88,068,469	\$29,029,847	33.0%	\$25,689,861	\$21,426,167	\$4,263,694	19.9%	\$142,788,177	\$109,494,636	\$33,293,541	30.4%
4	9/26/2020	\$113,153,550	\$86,745,066	\$26,408,484	30.4%	\$24,320,273	\$19,862,967	\$4,457,307	22.4%	\$137,473,823	\$106,608,033	\$30,865,791	29.0%
5	10/3/2020	\$114,375,276	\$92,284,132	\$22,091,144	23.9%	\$23,460,330	\$19,717,594	\$3,742,737	19.0%	\$137,835,606	\$112,001,726	\$25,833,881	23.1%
6	10/10/2020	\$114,802,883	\$88,490,099	\$26,312,784	29.7%	\$21,716,732	\$19,667,924	\$2,048,809	10.4%	\$136,519,615	\$108,158,023	\$28,361,593	26.2%
7	10/17/2020	\$113,280,669	\$89,190,486	\$24,090,183	27.0%	\$20,664,725	\$19,704,335	\$960,390	4.9%	\$133,945,394	\$108,894,821	\$25,050,573	23.0%
8	10/24/2020	\$111,745,204	\$88,173,783	\$23,571,421	26.7%	\$21,165,208	\$19,681,792	\$1,483,416	7.5%	\$132,910,412	\$107,855,575	\$25,054,837	23.2%
9	10/31/2020	\$111,272,152	\$91,201,316	\$20,070,836	22.0%	\$22,136,334	\$20,509,492	\$1,626,843	7.9%	\$133,408,486	\$111,710,808	\$21,697,679	19.4%
10	11/7/2020	\$113,620,007	\$92,978,873	\$20,641,134	22.2%	\$22,606,708	\$20,252,459	\$2,354,250	11.6%	\$136,226,715	\$113,231,332	\$22,995,384	20.3%
11	11/14/2020	\$109,577,081	\$89,685,517	\$19,891,564	22.2%	\$22,749,434	\$20,172,714	\$2,576,720	12.8%	\$132,326,515	\$109,858,231	\$22,468,284	20.5%
12	11/21/2020	\$114,446,332	\$96,650,014	\$17,796,318	18.4%	\$23,397,417	\$21,373,038	\$2,024,380	9.5%	\$137,843,749	\$118,023,052	\$19,820,698	16.8%
13	11/28/2020	\$106,113,701	\$92,381,438	\$13,732,263	14.9%	\$23,890,237	\$22,801,917	\$1,088,320	4.8%	\$130,003,938	\$115,183,355	\$14,820,583	12.9%
14	12/5/2020	\$111,508,837	\$99,556,606	\$11,952,231	12.0%	\$26,132,516	\$24,727,128	\$1,405,389	5.7%	\$137,641,353	\$124,283,734	\$13,357,620	10.7%
15	12/12/2020	\$111,156,442	\$98,579,669	\$12,576,773	12.8%	\$26,432,394	\$25,527,202	\$905,192	3.5%	\$137,588,836	\$124,106,871	\$13,481,965	10.9%
16	12/19/2020	\$112,212,350	\$101,628,893	\$10,583,457	10.4%	\$27,895,989	\$24,068,057	\$3,827,932	15.9%	\$140,108,339	\$125,696,950	\$14,411,389	11.5%
17	12/26/2020	\$119,456,586	\$108,533,892	\$10,922,694	10.1%	\$30,653,848	\$21,912,659	\$8,741,189	39.9%	\$150,110,434	\$130,446,551	\$19,663,883	15.1%
18	1/2/2021	\$127,122,270	\$105,603,978	\$21,518,292	20.4%	\$38,528,413	\$23,890,650	\$14,637,764	61.3%	\$165,650,683	\$129,494,628	\$36,156,056	27.9%
19	1/9/2021	\$133,494,933	\$102,317,060	\$31,177,873	30.5%	\$57,484,861	\$23,070,952	\$34,413,909	149.2%	\$190,979,794	\$125,388,012	\$65,591,782	52.3%
20	1/16/2021	\$127,542,833	\$103,309,252	\$24,233,581	23.5%	\$87,788,743	\$23,931,389	\$63,857,355	266.8%	\$215,331,576	\$127,240,641	\$88,090,936	69.2%
21	1/23/2021	\$130,328,004	\$99,944,800	\$30,383,204	30.4%	\$97,504,542	\$25,502,038	\$72,002,505	282.3%	\$227,832,546	\$125,446,838	\$102,385,709	81.6%
22	1/30/2021	\$130,076,595	\$104,739,453	\$25,337,142	24.2%	\$24,692,518	\$25,038,970	(\$346,452)	-1.4%	\$154,769,113	\$129,778,423	\$24,990,690	19.3%
23	2/6/2021	\$136,640,103	\$111,993,607	\$24,646,496	22.0%	\$24,693,211	\$21,709,985	\$2,983,227	13.7%	\$161,333,314	\$133,703,592	\$27,629,723	20.7%
24	2/13/2021	\$124,939,795	\$108,712,863	\$16,226,932	14.9%	\$23,636,934	\$20,194,178	\$3,442,756	17.0%	\$148,576,729	\$128,907,041	\$19,669,688	15.3%
25	2/20/2021		\$105,386,919				\$19,576,236				\$124,963,155		
26	2/27/2021		\$111,502,521				\$20,438,613				\$131,941,134		
27	3/6/2021		\$118,172,204				\$21,289,905				\$139,462,109		
28	3/13/2021		\$110,225,673				\$20,683,247				\$130,908,920		
29	3/20/2021		\$100,753,932				\$19,335,422				\$120,089,354		
30	3/27/2021		\$92,874,514				\$18,220,638				\$111,095,152		
31	4/3/2021		\$97,875,268				\$18,608,229				\$116,483,497		
32	4/10/2021		\$95,060,231				\$18,312,370				\$113,372,601		
33	4/17/2021		\$111,984,645				\$19,908,374				\$131,893,019		
34	4/24/2021		\$114,733,967				\$20,610,971				\$135,344,938		
35	5/1/2021		\$122,883,938				\$23,239,818				\$146,123,756		
36	5/8/2021		\$124,659,093				\$23,844,834				\$148,503,927		
37	5/15/2021		\$126,618,315				\$23,816,884				\$150,435,199		
38	5/22/2021		\$123,421,203				\$24,844,768				\$148,265,971		
39	5/29/2021		\$121,587,798				\$26,174,754				\$147,762,552		
40	6/5/2021		\$128,152,407				\$27,653,351				\$155,805,758		
41	6/12/2021		\$124,337,803				\$24,325,618				\$148,663,421		
42	6/19/2021		\$121,867,783				\$21,238,025				\$143,105,808		

Texas Lottery Commission
Fiscal Year Over Year Change in Sales
 Unaudited
 FY 2021 Compared to FY 2020

		SCRATCH TICKETS				DRAW GAMES				TOTAL SALES			
FY 2021		FY 2021	FY 2020	Difference	% change - Cumulative Sales	FY 2021	FY 2020	Difference	% change - Cumulative Sales	FY 2021	FY 2020	Difference	% change - Cumulative Sales
Week	Week Ending												
43	6/26/2021		\$120,777,685				\$21,274,287				\$142,051,972		
44	7/3/2021		\$121,140,896				\$22,407,902				\$143,548,798		
45	7/10/2021		\$114,591,206				\$22,821,511				\$137,412,717		
46	7/17/2021		\$114,444,652				\$23,021,475				\$137,466,127		
47	7/24/2021		\$113,701,030				\$23,085,273				\$136,786,303		
48	7/31/2021		\$115,767,821				\$22,752,584				\$138,520,405		
49	8/7/2021		\$117,301,276				\$23,791,977				\$141,093,253		
50	8/14/2021		\$111,123,756				\$22,904,623				\$134,028,379		
51	8/21/2021		\$112,919,496				\$21,669,592				\$134,589,088		
52	8/28/2021		\$113,122,453				\$22,007,271				\$135,129,724		
	8/31/2021**		\$30,859,274				\$3,863,234				\$34,722,508		
Total thru Current Week		\$2,807,490,198	\$2,317,965,627	\$489,524,571	21.1%	\$765,434,652	\$526,492,620	\$238,942,032	45.4%	\$3,572,924,850	\$2,844,458,247	\$728,466,603	25.6%
Fiscal Year Total		\$2,807,490,198	\$5,555,813,386			\$765,434,652	\$1,148,214,397			\$3,572,924,850	\$6,704,027,783		

* FY 21 includes 5 days
 ** FY 20 includes 2 days
 ** FY 21 includes 3 days

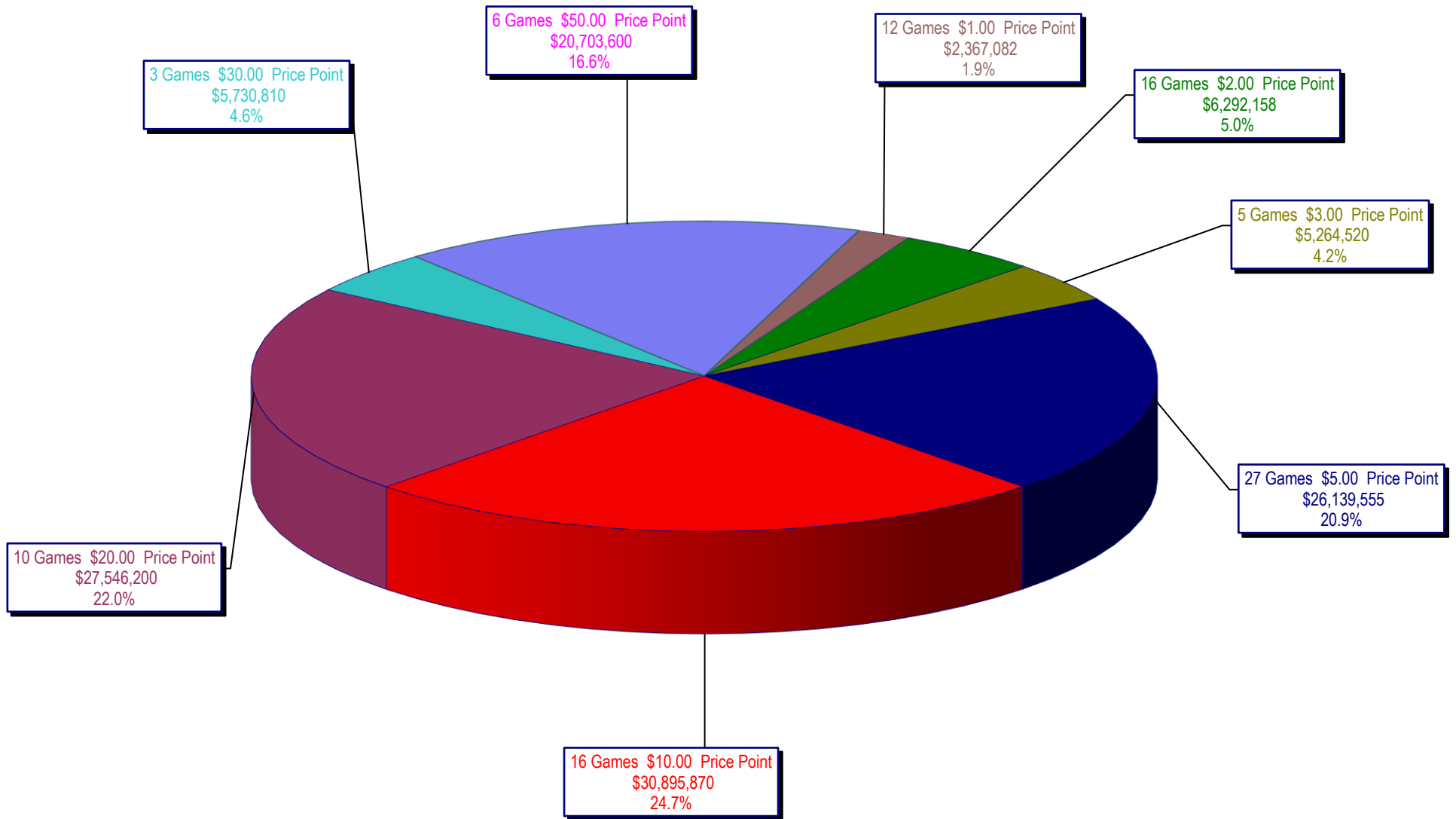
Texas Lottery Commission Fiscal Year Over Year Change in Sales



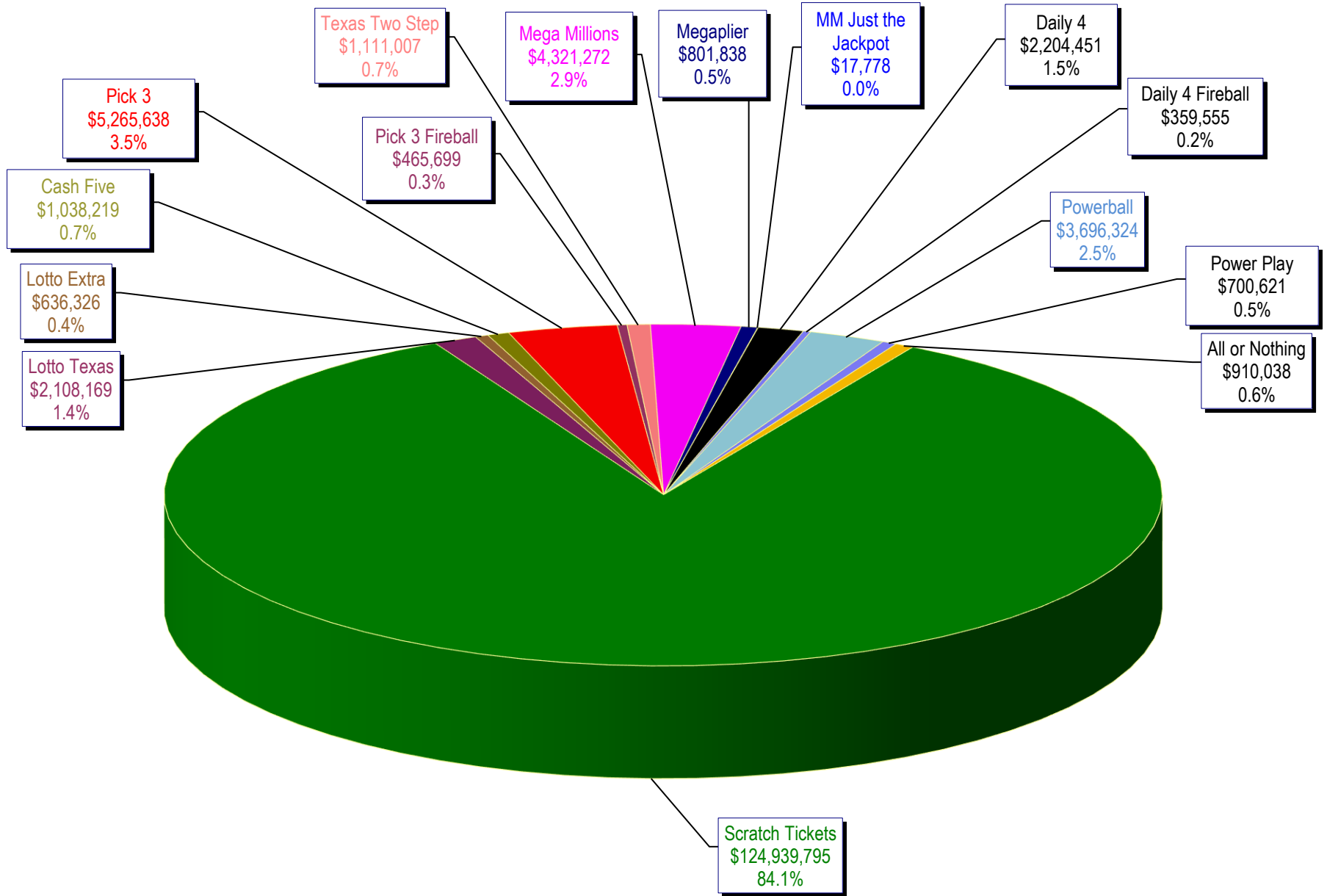
Legend: Week, Total Sales 2021, Total Sales 2020, Scratch Tickets 2021, Scratch Tickets 2020, Draw Games 2021, Draw Games 2020

Note: Report is prepared on a Fiscal Year basis.

Texas Lottery Commission
Scratch Ticket Sales
For the Week Ending 2/13/2021
(Unaudited)



Texas Lottery Commission
All Game Sales
For the Week Ending 2/13/2021
(Unaudited)



Texas Lottery Commission - Weekly Sales Summary for FY 2021 (Unaudited)

Week Ended	Scratch Tickets	New Games & Dates	Lotto Texas	Jackpot		Lotto Extra	Pick 3	Pick 3 Fireball	Cash Five	Texas Two Step	Jackpot		Mega Millions	Jackpot		Megaplier	MM Just the Jackpot	Daily 4	Daily 4 Fireball	Powerball	Jackpot		Power Play	All or Nothing	Total	Per Cap.	
				W	S						T	F		W	S												
2/6/2021	136,640,103	2286 (\$5,N); 2320 (\$10,N); 2287 (\$20,N) - 2/01/2021	2,252,119	5.75	6	673,758	5,677,801	514,876	1,071,864	1,090,903	200	225	4,388,106	42	54	827,049	18,894	2,375,733	386,945	3,706,518	20	30	714,026	994,620	161,333,314	5.56	
2/13/2021	124,939,795	2332 (\$5,N) - 2/08/2021	2,108,169	6.25	5	636,326	5,265,638	465,699	1,038,219	1,111,007	375	200	4,321,272	68	82	801,838	17,778	2,204,451	359,555	3,696,324	42	56	700,621	910,038	148,576,729	5.12	
weekly change	-8.6%		-6.4%			-5.6%	-7.3%	-9.6%	-3.1%	1.8%			-1.5%			-3.0%	-5.9%	-7.2%	-7.1%	-0.3%			-1.9%	-8.5%	-7.9%		
SALES			SALES			SALES	SALES	SALES	SALES	SALES			SALES			SALES	SALES	SALES	SALES	SALES			SALES	SALES	SALES	% of Sales	
Calendar Year to date 2020	821,825,223		16,508,046			4,955,988	34,143,982	2,997,408	6,880,968	7,592,822			120,578,516			18,864,535	477,306	14,440,683	2,326,874	81,401,703			13,059,179	6,120,206	1,152,173,438	100.0%	
Fiscal Year to date 2021	2,807,490,198		68,185,939			19,652,664	125,171,562	10,622,574	23,375,503	28,163,101			194,338,188			31,705,789	777,801	53,819,613	8,427,745	155,789,306			26,105,753	19,299,114	3,572,924,850	100.0%	
*Full week includes 2 days from FY20																											