



WEEKLY SALES SUMMARY

Unaudited

[Week Ending: 05/16/2009](#)

Texas Lottery Commission
Fiscal Year to Date Sales Comparison
Unaudited

Through the week ending 05/16/2009 (37 weeks)

Sales by Game	FY 2007 *	FY 2008 **	FY 2009	\$ Change		% Change	
				FY 2009 to FY 2007	FY 2009 to FY 2008	FY 2009 to FY 2007	FY 2009 to FY 2008
Instants	\$ 2,047,226,862	\$ 2,016,321,925	\$ 1,971,050,321	\$ -76,176,541	\$ -45,271,604	-3.7%	-2.2%
Lotto Texas	174,155,844	146,918,142	135,438,853	-38,716,991	-11,479,289	-22.2%	-7.8%
Pick 3	223,856,937	205,402,512	204,957,412	-18,899,525	-445,100	-8.4%	-0.2%
Pick 3 Sum It Up	-	4,593,655	4,311,221	4,311,221	-282,435	-	-6.1%
Cash 5	62,663,138	54,565,292	50,945,000	-11,718,138	-3,620,292	-18.7%	-6.6%
Texas Two Step	36,693,131	33,908,092	36,087,243	-605,888	2,179,151	-1.7%	6.4%
Mega Millions	130,523,437	127,922,688	140,464,017	9,940,581	12,541,329	7.6%	9.8%
Megaplier	30,370,547	29,928,535	31,750,194	1,379,647	1,821,659	4.5%	6.1%
Daily 4	-	30,294,291	32,385,251	32,385,251	2,090,960	-	6.9%
Daily 4 Sum It Up	-	6,613,062	3,904,851	3,904,851	-2,708,212	-	-41.0%
Total	\$ 2,705,489,895	\$ 2,656,468,194	\$ 2,611,294,362	\$ -94,195,533	\$ -45,173,832	-3.5%	-1.7%

* 3 extra days in 2007 ** 2 extra days in 2008

Texas Lottery Commission
Fiscal Year Over Year Change in Sales
Unaudited
FY 2009 Compared to FY 2008

Week	FY 2009 Week Ending	INSTANT TICKETS				ON-LINE GAMES				TOTAL SALES			
		FY 2009	FY 2008	Difference	% change - Cumulative Sales	FY 2009	FY 2008	Difference	% change - Cumulative Sales	FY 2009	FY 2008	Difference	% change - Cumulative Sales
1	9/6/2008**	\$44,890,104	\$62,376,229	(\$17,486,125)	-28.0%	\$14,722,011	\$19,372,224	(\$4,650,213)	-24.0%	\$59,612,115	\$81,748,453	(\$22,136,338)	-27.1%
2	9/13/2008	\$46,309,551	\$52,458,866	(\$6,149,315)	-20.6%	\$13,704,860	\$16,926,163	(\$3,221,303)	-21.7%	\$60,014,411	\$69,385,029	(\$9,370,618)	-20.8%
3	9/20/2008	\$42,923,171	\$49,998,934	(\$7,075,763)	-18.6%	\$12,291,263	\$15,792,283	(\$3,501,020)	-21.8%	\$55,214,434	\$65,791,217	(\$10,576,783)	-19.4%
4	9/27/2008	\$47,042,801	\$49,894,175	(\$2,851,374)	-15.6%	\$14,222,339	\$14,800,514	(\$578,175)	-17.9%	\$61,265,140	\$64,694,689	(\$3,429,549)	-16.2%
5	10/4/2008	\$50,747,162	\$53,486,863	(\$2,739,701)	-13.5%	\$15,784,472	\$16,618,430	(\$833,958)	-15.3%	\$66,531,634	\$70,105,293	(\$3,573,659)	-14.0%
6	10/11/2008	\$49,763,789	\$50,918,020	(\$1,154,231)	-11.7%	\$15,622,498	\$15,601,410	\$21,088	-12.9%	\$65,386,287	\$66,519,430	(\$1,133,143)	-12.0%
7	10/18/2008	\$49,299,053	\$50,532,253	(\$1,233,200)	-10.5%	\$15,167,940	\$15,682,666	(\$514,726)	-11.6%	\$64,466,993	\$66,214,919	(\$1,747,926)	-10.7%
8	10/25/2008	\$49,977,581	\$50,347,450	(\$369,869)	-9.3%	\$14,525,843	\$15,586,516	(\$1,060,673)	-11.0%	\$64,503,424	\$65,933,966	(\$1,430,542)	-9.7%
9	11/1/2008	\$50,346,542	\$53,953,733	(\$3,607,191)	-9.0%	\$14,838,845	\$16,775,983	(\$1,937,139)	-11.1%	\$65,185,387	\$70,729,716	(\$5,544,330)	-9.5%
10	11/8/2008	\$54,860,087	\$53,635,090	\$1,224,997	-7.9%	\$16,057,069	\$15,912,791	\$144,278	-9.9%	\$70,917,156	\$69,547,881	\$1,369,275	-8.3%
11	11/15/2008	\$53,484,812	\$51,254,401	\$2,230,411	-6.8%	\$15,829,819	\$15,797,076	\$32,744	-9.0%	\$69,314,631	\$67,051,477	\$2,263,155	-7.3%
12	11/22/2008	\$52,806,511	\$50,897,817	\$1,908,694	-5.9%	\$16,460,748	\$15,801,720	\$659,028	-7.9%	\$69,267,259	\$66,699,537	\$2,567,722	-6.4%
13	11/29/2008	\$52,199,741	\$53,913,115	(\$1,713,374)	-5.7%	\$17,397,576	\$17,055,505	\$342,072	-7.1%	\$69,597,317	\$70,968,620	(\$1,371,303)	-6.0%
14	12/6/2008	\$56,731,851	\$55,702,697	\$1,029,154	-5.1%	\$20,363,789	\$17,900,717	\$2,463,073	-5.5%	\$77,095,640	\$73,603,414	\$3,492,227	-5.2%
15	12/13/2008	\$54,109,617	\$53,703,516	\$406,101	-4.7%	\$22,952,228	\$17,820,841	\$5,131,387	-3.0%	\$77,061,845	\$71,524,357	\$5,537,488	-4.3%
16	12/20/2008	\$55,777,328	\$57,592,769	(\$1,815,441)	-4.6%	\$15,833,517	\$17,436,233	(\$1,602,716)	-3.4%	\$71,610,845	\$75,029,002	(\$3,418,157)	-4.3%
17	12/27/2008	\$57,597,885	\$57,696,003	(\$98,118)	-4.3%	\$15,851,771	\$14,743,680	\$1,108,091	-2.9%	\$73,449,656	\$72,439,683	\$1,009,973	-4.0%
18	1/3/2009	\$57,582,115	\$57,935,952	(\$353,837)	-4.1%	\$16,900,028	\$15,704,450	\$1,195,578	-2.3%	\$74,482,143	\$73,640,402	\$841,741	-3.7%
19	1/10/2009	\$54,250,945	\$55,360,542	(\$1,109,597)	-4.0%	\$16,203,220	\$15,691,540	\$511,680	-2.0%	\$70,454,165	\$71,052,082	(\$597,917)	-3.5%
20	1/17/2009	\$51,625,339	\$54,920,166	(\$3,294,827)	-4.1%	\$15,701,605	\$16,259,669	(\$558,064)	-2.1%	\$67,326,944	\$71,179,835	(\$3,852,891)	-3.6%
21	1/24/2009	\$52,789,573	\$54,439,890	(\$1,650,317)	-4.1%	\$15,897,473	\$16,691,724	(\$794,251)	-2.2%	\$68,687,046	\$71,131,614	(\$2,444,568)	-3.6%
22	1/31/2009	\$55,453,471	\$57,464,382	(\$2,010,911)	-4.0%	\$16,908,272	\$17,968,227	(\$1,059,955)	-2.4%	\$72,361,743	\$75,432,609	(\$3,070,866)	-3.7%
23	2/7/2009	\$62,247,711	\$60,715,019	\$1,532,692	-3.7%	\$18,354,314	\$20,097,338	(\$1,743,025)	-2.7%	\$80,602,025	\$80,812,357	(\$210,333)	-3.5%
24	2/14/2009	\$60,509,056	\$57,093,143	\$3,415,913	-3.3%	\$19,218,078	\$22,179,908	(\$2,961,831)	-3.3%	\$79,727,134	\$79,273,051	\$454,083	-3.3%
25	2/21/2009	\$59,194,623	\$57,627,047	\$1,567,576	-3.0%	\$21,098,199	\$27,230,539	(\$6,132,340)	-4.5%	\$80,292,822	\$84,857,586	(\$4,564,764)	-3.4%
26	2/28/2009	\$58,857,216	\$55,591,667	\$3,265,549	-2.7%	\$24,116,924	\$17,016,118	\$7,100,806	-2.8%	\$82,974,140	\$72,607,785	\$10,366,355	-2.7%
27	3/7/2009	\$59,552,257	\$56,837,481	\$2,714,776	-2.4%	\$23,995,136	\$16,690,193	\$7,304,943	-1.1%	\$83,547,393	\$73,527,674	\$10,019,719	-2.1%
28	3/14/2009	\$53,754,084	\$54,587,112	(\$833,028)	-2.4%	\$18,769,831	\$16,448,165	\$2,321,667	-0.6%	\$72,523,915	\$71,035,277	\$1,488,639	-1.9%
29	3/21/2009	\$52,581,107	\$53,098,937	(\$517,830)	-2.3%	\$15,903,038	\$16,639,184	(\$736,146)	-0.7%	\$68,484,145	\$69,738,121	(\$1,253,976)	-1.9%
30	3/28/2009	\$52,560,961	\$53,933,689	(\$1,372,728)	-2.3%	\$16,094,933	\$17,698,625	(\$1,603,692)	-1.0%	\$68,655,894	\$71,632,314	(\$2,976,420)	-2.0%
31	4/4/2009	\$56,249,759	\$57,598,982	(\$1,349,223)	-2.3%	\$17,357,002	\$17,665,411	(\$308,409)	-1.0%	\$73,606,761	\$75,264,393	(\$1,657,632)	-2.0%
32	4/11/2009	\$54,440,987	\$53,954,185	\$486,802	-2.2%	\$17,660,600	\$15,860,784	\$1,799,816	-0.7%	\$72,101,587	\$69,814,969	\$2,286,618	-1.9%
33	4/18/2009	\$52,755,834	\$53,946,736	(\$1,190,902)	-2.2%	\$18,469,585	\$16,452,676	\$2,016,909	-0.3%	\$71,225,419	\$70,399,412	\$826,007	-1.8%
34	4/25/2009	\$51,450,968	\$51,533,006	(\$82,038)	-2.2%	\$20,216,898	\$16,873,949	\$3,342,950	0.3%	\$71,667,866	\$68,406,955	\$3,260,912	-1.6%
35	5/2/2009	\$52,327,090	\$53,250,568	(\$923,478)	-2.2%	\$23,520,573	\$18,202,103	\$5,318,471	1.2%	\$75,847,663	\$71,452,671	\$4,394,993	-1.4%
36	5/9/2009	\$53,214,412	\$54,060,849	(\$846,437)	-2.1%	\$16,241,207	\$18,422,562	(\$2,181,355)	0.8%	\$69,455,619	\$72,483,411	(\$3,027,792)	-1.4%
37	5/16/2009	\$50,785,227	\$54,010,641	(\$3,225,414)	-2.2%	\$15,990,544	\$20,728,360	(\$4,737,816)	0.0%	\$66,775,771	\$74,739,001	(\$7,963,230)	-1.7%
38	5/23/2009		\$50,377,032				\$15,461,384				\$65,838,416		
39	5/30/2009		\$49,545,080				\$15,175,370				\$64,720,450		
40	6/6/2009		\$53,702,986				\$15,982,166				\$69,685,152		

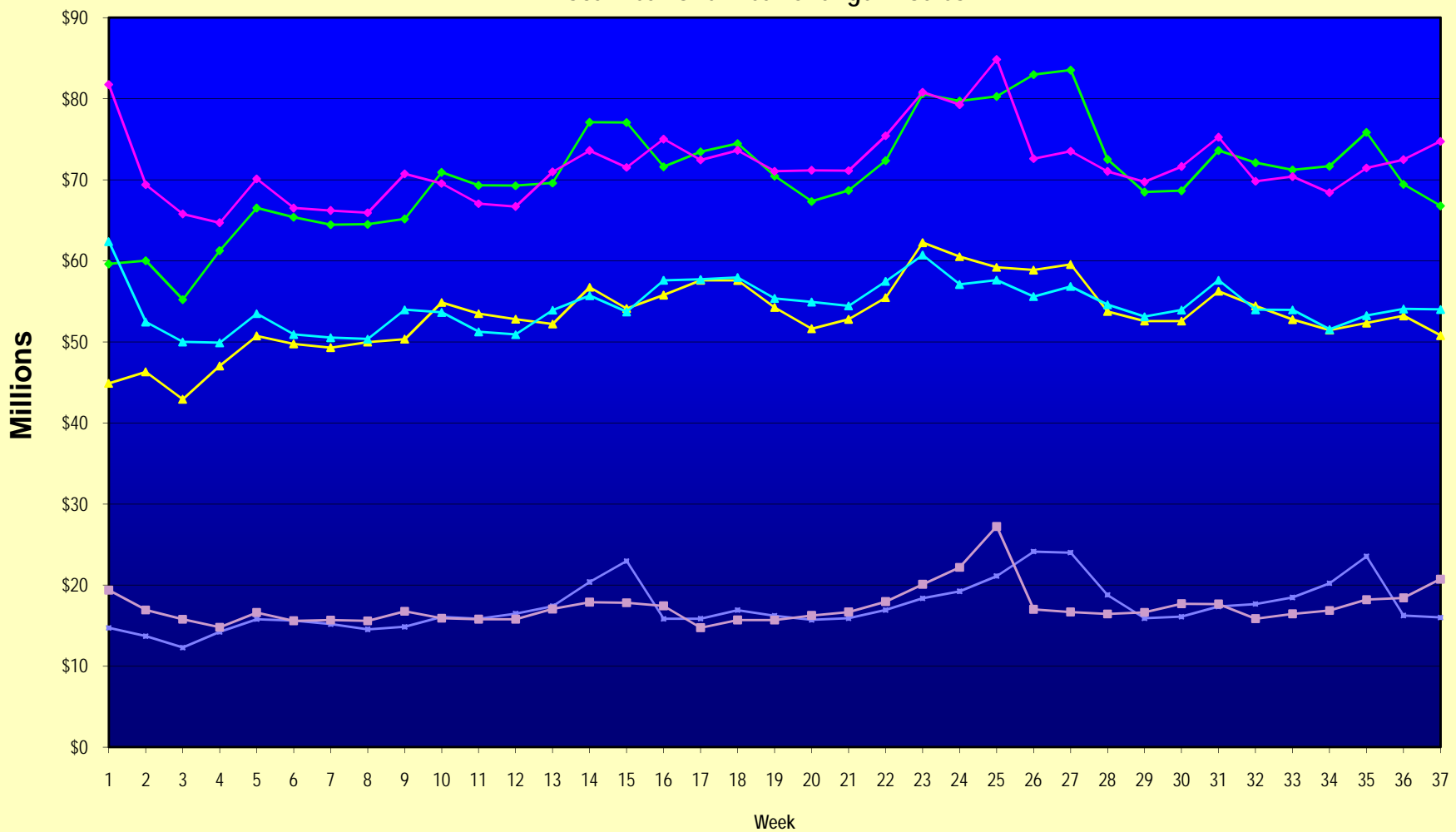
Note: Week 1 is not a full week of sales as this report is prepared on a Fiscal Year basis.

Texas Lottery Commission
Fiscal Year Over Year Change in Sales
Unaudited
FY 2009 Compared to FY 2008

Week	FY 2009 Week Ending	INSTANT TICKETS				ON-LINE GAMES				TOTAL SALES			
		FY 2009	FY 2008	Difference	% change - Cumulative Sales	FY 2009	FY 2008	Difference	% change - Cumulative Sales	FY 2009	FY 2008	Difference	% change - Cumulative Sales
41	6/13/2009		\$51,171,483				\$16,589,087				\$67,760,570		
42	6/20/2009		\$50,650,362				\$15,728,484				\$66,378,846		
43	6/27/2009		\$49,258,266				\$15,250,905				\$64,509,171		
44	7/4/2009		\$53,393,355				\$16,270,619				\$69,663,974		
45	7/11/2009		\$53,127,756				\$16,914,922				\$70,042,678		
46	7/18/2009		\$51,593,146				\$17,752,738				\$69,345,884		
47	7/25/2009		\$49,902,181				\$16,706,145				\$66,608,326		
48	8/1/2009		\$49,605,420				\$16,254,383				\$65,859,803		
49	8/8/2009		\$50,961,907				\$16,770,496				\$67,732,403		
50	8/15/2009		\$49,452,511				\$16,749,487				\$66,201,998		
51	8/22/2009		\$49,249,518				\$17,286,302				\$66,535,820		
52	8/29/2009		\$49,468,928				\$18,109,997				\$67,578,925		
53	9/5/2009		\$6,054,239				\$493,109				\$6,547,348		
Total thru Current Week		\$1,971,050,321	\$2,016,321,925	(\$45,271,604)	-2.2%	\$640,244,041	\$640,146,269	\$97,772	0.0%	\$2,611,294,362	\$2,656,468,194	(\$45,173,832)	-1.7%
Fiscal Year Total		\$1,971,050,321	\$2,783,836,095			\$640,244,041	\$887,641,858			\$2,611,294,362	\$3,671,477,953		

** FY 2009 includes 6 days; FY 2008 includes 8 days
FY 2009 average daily sales are \$9,242,258. Two days at average daily sales are \$18,484,516.

Texas Lottery Commission Fiscal Year Over Year Change in Sales



◆ Total Sales 2009
 ◆ Total Sales 2008
 ▲ Instant Tickets 2009
 ▲ Instant Tickets 2008
 ◆ On-Line Games 2009
 ■ On-Line Games 2008

Note: Week 1 is not a full week of sales as this report is prepared on a Fiscal Year basis.

Texas Lottery Commission
Instant Tickets by Price Point
Sales, Prize Expense, Sales Contribution and Payout Percentage With Year Over Year Changes
Unaudited

Fiscal Year	Price Point	# of Active Games	FY Sales	% of Instant Ticket Sales	Year over Year Change in Sales	FY Prize Expense	Year over Year Change in Prize Expense	FY Sales Contribution	Year over Year Change in Contribution	Average Prize Payout %	Year over Year Change in Payout %
2008	\$1.00	42	167,142,426	8.3%		100,740,416		66,402,010		60.3%	0.3%
thru	\$2.00	52	333,494,970	16.5%		217,178,642		116,316,328		65.1%	0.4%
5/17/2008	\$3.00	16	179,705,199	8.9%		118,122,159		61,583,040		65.7%	-0.1%
	\$5.00	45	557,507,065	27.6%		378,665,315		178,841,750		67.9%	-0.1%
	\$7.00	12	116,901,344	5.8%		79,503,236		37,398,108		68.0%	0.1%
	\$10.00	19	303,564,636	15.1%		212,370,627		91,194,009		70.0%	-0.8%
	\$20.00	8	147,329,520	7.3%		105,876,423		41,453,097		71.9%	-0.1%
	\$25.00	2	50,434,175	2.5%		36,618,685		13,815,490		72.6%	0.3%
	\$30.00	3	46,936,740	2.3%		33,976,457		12,960,283		72.4%	0.2%
	\$50.00	2	113,305,850	5.6%		81,748,191		31,557,659		72.1%	0.0%
Total		201	\$2,016,321,925			\$1,364,800,151		\$651,521,774		67.7%	0.3%
2009	\$1.00	42	172,651,650	8.8%		103,812,846		68,838,804		60.1%	0.0%
thru	\$2.00	40	335,516,770	17.1%		218,683,045		116,833,725		65.2%	-0.2%
5/16/2009	\$3.00	16	206,169,858	10.5%		135,288,052		70,881,806		65.6%	-0.1%
	\$5.00	44	608,537,344	30.7%		413,859,038		194,678,306		68.0%	0.1%
	\$7.00	8	102,836,454	5.1%		69,935,861		32,900,593		68.0%	0.0%
	\$10.00	18	280,020,670	14.2%		195,921,645		84,099,025		70.0%	0.0%
	\$20.00	9	167,662,640	8.7%		120,321,060		47,341,580		71.8%	0.0%
	\$25.00	1	2,372,325	0.1%		1,725,527		646,798		72.7%	0.2%
	\$30.00	3	10,023,960	0.5%		7,263,733		2,760,227		72.5%	0.1%
	\$50.00	4	85,258,650	4.2%		62,640,270		22,618,380		73.5%	1.8%
Total		185	\$1,971,050,321			\$1,329,451,076		\$641,599,245		67.4%	-0.3%
Variance	\$1.00	0	5,509,224		3.3%	3,072,430	3.0%	2,436,794	3.7%	-0.14%	
2009 to	\$2.00	-12	2,021,800		0.6%	1,504,403	0.7%	517,397	0.4%	0.06%	
2008	\$3.00	0	26,464,659		14.7%	17,165,893	14.5%	9,298,766	15.1%	-0.11%	
	\$5.00	-1	51,030,279		9.2%	35,193,723	9.3%	15,836,556	8.9%	0.09%	
	\$7.00	-4	-14,064,890		-12.0%	-9,567,376	-12.0%	-4,497,514	-12.0%	0.00%	
	\$10.00	-1	-23,543,966		-7.8%	-16,448,981	-7.7%	-7,094,985	-7.8%	0.01%	
	\$20.00	1	20,333,120		13.8%	14,444,637	13.6%	5,888,483	14.2%	-0.10%	
	\$25.00	-1	-48,061,850		-95.3%	-34,893,158	-95.3%	-13,168,692	-95.3%	0.13%	
	\$30.00	0	-36,912,780		-78.6%	-26,712,724	-78.6%	-10,200,056	-78.7%	0.08%	
	\$50.00	2	-28,047,200		-24.8%	-19,107,922	-23.4%	-8,939,278	-28.3%	1.32%	
Total		-16	-\$45,271,604		-2.2%	-\$35,349,075	-2.6%	-\$9,922,529	-1.5%	-0.24%	

Texas Lottery Commission
Instant Tickets by Price Point
Sales, Prize Expense, Sales Contribution and Payout Percentage With Year Over Year Changes
Unaudited

Notes - Instant Ticket Variances

		FY 2009		FY 2008		Difference
Sales	\$1 - \$7		\$1,425,712,076		\$1,354,751,004	\$70,961,072
Prize Exp.	\$1 - \$7		\$941,578,841		\$894,209,768	\$47,369,073
Sales Cont.	\$1 - \$7		\$484,133,235		\$460,541,236	\$23,591,999
Prize Exp. %	\$1 - \$7		66.0%		66.0%	0.0%
		FY 2009		FY 2008		Difference
Sales	\$10 - \$50		\$545,338,245		\$661,570,921	-\$116,232,676
Prize Exp.	\$10 - \$50		\$387,872,235		\$470,590,383	-\$82,718,148
Sales Cont.	\$10 - \$50		\$157,466,010		\$190,980,538	-\$33,514,528
Prize Exp. %	\$10 - \$50		71.1%		71.1%	0.0%
		FY 2009		FY 2008		Difference
Sales	Instant		\$1,971,050,321		\$2,016,321,925	-\$45,271,604
Prize Exp.	Instant		\$1,329,451,076		\$1,364,800,151	-\$35,349,075
Sales Cont.	Instant		\$641,599,245		\$651,521,774	-\$9,922,529
Prize Exp. %	Instant		67.4%		67.7%	-0.2%

		FY 2009		FY 2008		Difference
Sales	\$1 - \$10		\$1,705,732,746		\$1,658,315,640	\$47,417,106
Prize Exp.	\$1 - \$10		\$1,137,500,486		\$1,106,580,395	\$30,920,091
Sales Cont.	\$1 - \$10		\$568,232,260		\$551,735,245	\$16,497,015
Prize Exp. %	\$1 - \$10		66.7%		66.7%	0.0%
		FY 2009		FY 2008		Difference
Sales	\$20 - \$50		\$265,317,575		\$358,006,285	-\$92,688,710
Prize Exp.	\$20 - \$50		\$191,950,590		\$258,219,756	-\$66,269,166
Sales Cont.	\$20 - \$50		\$73,366,985		\$99,786,529	-\$26,419,544
Prize Exp. %	\$20 - \$50		72.3%		72.1%	0.2%
		FY 2009		FY 2008		Difference
Sales	Instant		\$1,971,050,321		\$2,016,321,925	-\$45,271,604
Prize Exp.	Instant		\$1,329,451,076		\$1,364,800,151	-\$35,349,075
Sales Cont.	Instant		\$641,599,245		\$651,521,774	-\$9,922,529
Prize Exp. %	Instant		67.4%		67.7%	-0.2%

Texas Lottery Commission
Weekly Sales Summary
& Comparison to Previous Week
 Unaudited

	Week Ending 05/16/2009	% of Sales	Week Ending 05/09/2009	% of Sales	\$ change	% change
	<u>THIS WEEK</u>		<u>LAST WEEK</u>			
Total Sales	<u>\$66,775,771</u>		<u>\$69,455,619</u>		<u>-\$2,679,848</u>	-3.86%
Instant Tickets	<u>\$50,785,227</u>	76.1%	<u>\$53,214,412</u>	76.6%	<u>-\$2,429,185</u>	-4.56%
Lotto Texas	\$3,332,475	5.0%	\$3,554,635	5.1%	-\$222,160	-6.25%
Pick 3	\$5,417,197	8.1%	\$5,603,106	8.1%	-\$185,909	-3.32%
Pick 3 Sum It Up	\$112,501	0.2%	\$118,186	0.2%	-\$5,685	-4.81%
Cash 5	\$1,356,843	2.0%	\$1,389,454	2.0%	-\$32,611	-2.35%
Texas Two Step	\$842,436	1.3%	\$823,436	1.2%	\$19,000	2.31%
Mega Millions	\$3,116,696	4.7%	\$2,961,748	4.3%	\$154,948	5.23%
Megaplier	\$748,141	1.1%	\$718,169	1.0%	\$29,972	4.17%
Daily 4	\$959,923	1.4%	\$967,592	1.4%	-\$7,670	-0.79%
Daily 4 Sum It Up	\$104,332	0.2%	\$104,881	0.2%	-\$549	-0.52%
Total Online Sales	<u>\$15,990,544</u>		<u>\$16,241,207</u>		<u>-\$250,663</u>	-1.54%

* Totals may not sum due to rounding.

Texas Lottery Commission
Weekly Sales Summary
Unaudited

INSTANT TICKETS
TOP TEN SELLING GAMES

For the Week Ending : 05/16/2009

Rank	Price Point	Game	Sales (Millions)
1	\$ 50	\$140,000,000 EXTREME PAYOUT	\$ 3.045
2	\$ 5	KING OF CASH	\$ 2.990
3	\$ 5	\$50,000 TREASURES	\$ 2.894
4	\$ 3	BONUS CASHWORD	\$ 2.721
5	\$ 10	PRECIOUS JEWELS	\$ 2.458
6	\$ 5	SAPPHIRE BLUE 5'S	\$ 2.329
7	\$ 7	\$75,000 CASINO	\$ 2.002
8	\$ 10	SET FOR LIFE	\$ 1.863
9	\$ 20	SUPER SET FOR LIFE	\$ 1.689
10	\$ 10	STACKS OF CASH	\$ 1.678

Texas Lottery Commission
Prize Payout Tracking Report
Unaudited

Through Week Ending 05/16/2009

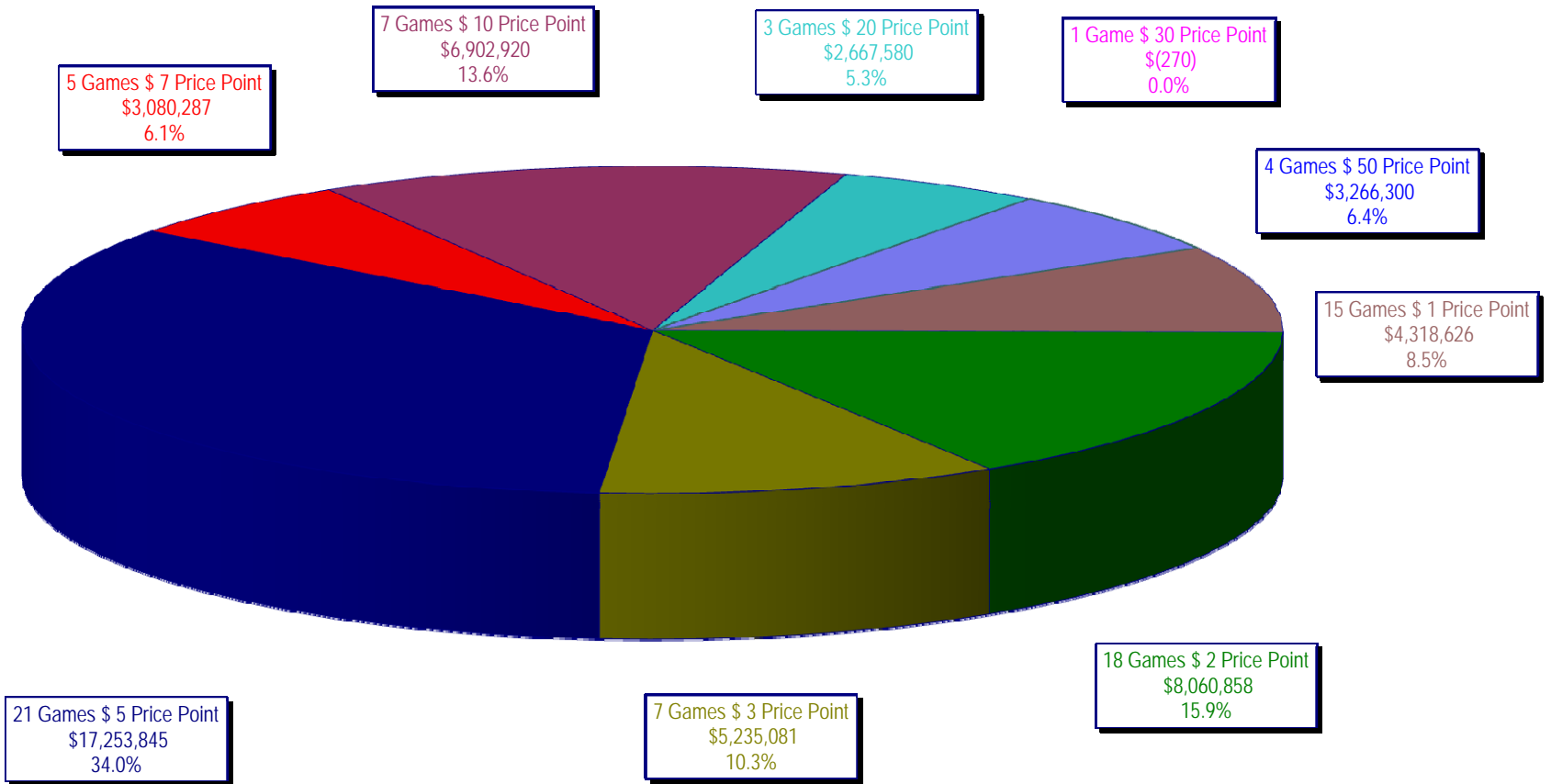
On-Line Sales

		FY Sales Through Week Ending 5/16/2009		FY Prize Expense Through Week Ending 5/16/2009	Actual* Prize Payout	Base Payout (Prize Pool)
Lotto	\$	135,438,853	\$	68,288,966	50.42%	50.00%
Pick 3		204,957,412		99,150,880	48.38%	50.00%
Pick 3 Sum It Up		4,311,221		1,945,607	45.13%	50.00%
Cash 5		50,945,000		25,576,893	50.20%	50.00%
Texas Two-Step		36,087,243		19,241,936	53.32%	50.00%
Mega Millions		140,464,017		69,222,016	49.28%	50.00%**
Megaplier		31,750,194		14,589,695	45.95%	N/A
Daily 4		32,385,251		15,922,825	49.17%	50.00%
Daily 4-Sum It Up		3,904,851		1,646,419	42.16%	50.00%
Totals	\$	640,244,041	\$	315,585,237	49.29%	

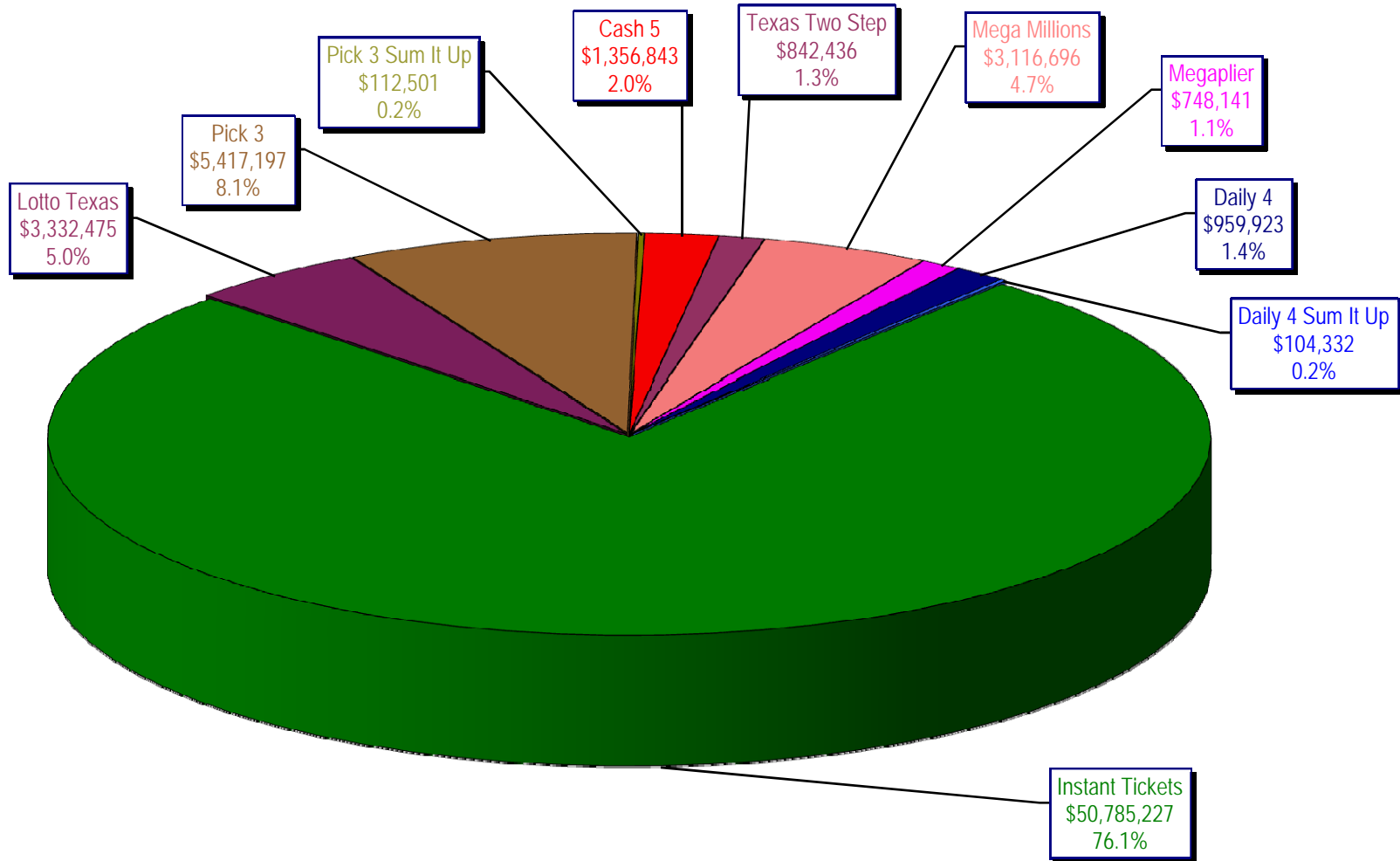
* Before Unclaimed Prizes

** Estimated; depends on # of guaranteed prizes won in Texas

Texas Lottery Commission
Instant Ticket Sales
For the Week Ending 05/16/2009
(Unaudited)



Texas Lottery Commission
All Game Sales
For the Week Ending 05/16/2009
(Unaudited)



Texas Lottery Commission - Weekly Sales Summary for FY 2009 (Unaudited)

Week Ended	Instant Games	New Games & Dates	Lotto Texas	Jackpot W S		Pick 3	Pick 3 Sum It Up	Cash 5	Texas Two Step	Jackpot M/T TH/F		Mega Millions	Jackpot T F		Megaplier	Daily 4	Daily 4 Sum It Up	Total	Per Cap.
9/6/2008	50,944,343.00	1108 (\$2,N), 1088 (\$3, N) - 9/01/08	3,378,718.00	5	6	5,436,414.00	122,123.00	1,396,622.00	890,346.00	350	450	2,445,490.00	12	16	649,090.00	786,482.50	109,834.00	66,159,462.50	2.77
9/13/2008	46,309,551.00	1109 (\$1,N), 1098 (\$5, N) - 9/08/08	3,020,089.00	7	8	4,705,585.50	105,899.00	1,279,412.00	856,199.00	600	200	2,327,214.00	24	12	617,672.00	696,633.00	96,156.50	60,014,411.00	2.51
9/20/2008	42,923,171.00	0	3,054,093.00	9	10	4,121,734.50	90,718.00	1,155,350.00	637,792.00	225	250	1,978,127.00	15	12	540,225.00	627,210.00	86,013.50	55,214,434.00	2.31
9/27/2008	47,042,801.00	1111 (\$2,N), 1099 (\$5, N) - 9/22/08	3,427,671.00	11	12	4,821,563.00	103,189.50	1,288,062.00	834,307.00	275	425	2,322,862.00	16	24	617,085.00	709,741.50	97,858.00	61,265,140.00	2.56
10/4/2008	50,747,162.00	1113 (\$1,N) 9/29/08	3,675,683.00	13	14	5,305,711.00	116,332.50	1,369,040.00	1,074,874.00	525	650	2,671,927.00	32	42	693,845.00	770,782.50	106,277.00	66,531,634.00	2.78
10/11/2008	49,763,789.00	0	3,732,365.00	15	16	5,287,094.00	114,665.50	1,370,334.00	1,305,250.00	800	975	2,306,070.00	12	16	622,120.00	778,204.00	106,395.00	65,386,286.50	2.74
10/18/2008	49,299,053.00	1117 (\$3,N), 1118 (\$20,N) - 10/13/08	3,780,438.00	17	18	5,149,258.00	109,530.00	1,355,601.00	741,849.00	200	200	2,500,644.00	23	32	652,198.00	776,366.00	102,056.00	64,466,993.00	2.70
10/25/2008	49,977,581.00	1119 (\$1,N), 1120 (\$5,N) - 10/20/08	3,210,762.00	4	5	5,099,671.00	107,104.50	1,339,079.00	789,649.00	225	275	2,456,965.00	42	12	641,206.00	778,434.00	102,972.50	64,503,424.00	2.70
11/1/2008	50,346,542.00	1121 (\$2,N), 1122 (\$10,N) - 10/27/08	3,325,641.00	6	7	5,234,124.00	109,983.00	1,339,046.00	946,035.00	375	475	2,347,596.00	16	23	626,235.00	805,572.00	104,612.50	65,185,386.50	2.73
11/8/2008	54,860,087.00	1123 (\$3,N), 1124 (\$7,N) - 11/03/08; 1103 (\$3,N) - 11/05/08; 1063 (\$3,N) - 11/07/08	3,290,417.00	4	5	5,686,701.00	118,495.00	1,397,985.00	1,158,101.00	625	750	2,729,302.50	31	42	692,662.00	871,230.00	112,175.50	70,917,156.00	2.97
11/15/2008	53,484,812.00	1125 (\$1, N), 1126 (\$5,N) - 11/10/08	3,336,934.00	6	7	5,459,984.00	112,884.00	1,366,024.00	766,955.00	200	225	3,102,251.00	51	62	749,736.00	830,957.00	104,094.00	69,314,631.00	2.90
11/22/2008	52,806,511.00	0	3,452,481.00	8	9	5,329,591.00	108,861.50	1,358,271.00	743,950.00	200	200	3,666,517.00	73	86	847,201.00	849,077.50	104,797.50	69,267,258.50	2.90
11/29/2008	52,199,741.00	1127 (\$2,N), 1128 (\$5,N) - 11/24/08	3,585,374.00	10	11	5,340,783.50	111,443.00	1,315,233.00	686,077.00	200	225	4,441,715.00	96	111	968,906.00	845,475.50	102,569.00	69,597,317.00	2.91
12/6/2008	56,731,851.00	0	3,794,991.00	12	13	5,752,593.00	121,663.50	1,416,446.00	780,328.00	250	200	6,238,355.00	128	146	1,270,214.00	881,841.50	107,357.00	77,095,640.00	3.23
12/13/2008	54,109,617.00	1129 (\$1, N) - 12/08/08	3,315,658.00	4	5	5,580,770.00	114,295.50	1,384,858.00	766,893.00	225	250	9,150,536.00	170	207	1,691,121.00	846,176.50	101,919.50	77,061,844.50	3.22
12/20/2008	55,777,328.00	1104 (\$2,N), 1105 (\$5,N), 1106 (\$10,N) - 12/15/08	3,432,340.00	6	7	5,741,120.00	116,075.50	1,401,805.00	741,945.00	200	200	2,736,234.00	12	16	687,875.00	871,579.50	104,543.00	71,610,845.00	3.00
12/27/2008	57,597,885.00	1077 (\$1,N), 1110 (\$1,N) - 12/22/08	3,582,169.00	8	4	5,628,081.50	115,323.00	1,340,590.00	708,906.00	225	250	2,842,167.00	22	29	706,042.00	828,346.00	100,146.00	73,449,655.50	3.07
1/3/2009	57,582,115.00	0	3,784,763.00	5	6	5,690,220.50	120,519.50	1,406,807.00	934,000.00	325	525	3,190,457.00	37	46	780,850.00	885,674.00	106,736.50	74,482,142.50	3.12
1/10/2009	54,250,945.00	1135 (\$2,N), 1136 (\$5,N) - 1/5/09	3,582,400.00	7	8	5,476,890.00	116,674.50	1,403,531.00	1,267,847.00	675	900	2,701,275.00	12	16	681,574.00	868,919.00	104,109.50	70,454,165.00	2.95
1/17/2009	51,625,339.00	1137 (\$1,N), 1138 (\$3,N) - 1/12/09	3,668,302.50	9	10	5,443,159.00	112,605.00	1,387,958.00	778,563.00	200	200	2,683,707.00	22	12	675,416.00	852,987.00	98,907.50	67,326,944.00	2.82
1/24/2009	52,789,573.00	1115 (\$2,N), 1116 (\$5,N) - 1/19/09	3,723,835.50	11	12	5,514,547.50	115,827.50	1,376,695.00	860,483.00	225	325	2,692,611.00	16	21	676,936.00	836,996.00	99,541.00	68,687,045.50	2.87
1/31/2009	55,453,471.00	1080 (\$1,N), 1024 (\$20,R) - 1/26/09; 1062 (\$5,N) - 1/28/09	3,837,299.00	13	14	5,700,714.50	121,794.50	1,403,756.00	1,070,879.00	450	600	3,002,883.00	30	40	731,253.00	925,937.50	113,755.50	72,361,743.00	3.03
2/7/2009	62,247,711.00	1035 (\$2,N), 1144 (\$5,N), 1058 (\$10, N) - 2/2/09	4,092,117.00	15	16	6,336,717.00	134,543.00	1,481,812.00	842,746.00	200	225	3,509,032.00	50	60	829,550.00	1,007,529.00	120,267.50	80,602,024.50	3.37
2/14/2009	60,509,056.00	1146 (\$7,N), 1089 (\$1,N) - 2/9/09	4,119,193.00	17	18	6,363,028.00	133,901.50	1,445,616.00	1,013,987.00	325	450	4,082,572.00	73	85	928,813.00	1,010,898.50	120,068.50	79,727,133.50	3.34
2/21/2009	59,194,623.00	1046 (\$2,N), 1140 (\$5,N) - 2/16/09	4,326,401.00	19	20	6,038,807.50	128,493.00	1,439,312.00	1,268,803.00	600	750	5,614,471.00	103	120	1,178,133.00	988,075.00	115,703.50	80,292,822.00	3.36
2/28/2009	58,857,216.00	1132 (\$10,N), 1149 (\$1,N) - 2/23/09	4,526,304.00	21	22	6,084,457.50	128,979.50	1,439,607.00	1,668,414.00	925	1,150	7,676,975.00	145	171	1,504,895.00	973,121.00	114,171.00	82,974,140.00	3.47

Texas Lottery Commission - Weekly Sales Summary for FY 2009 (Unaudited)

Week Ended	Instant Games	New Games & Dates	Lotto Texas	Jackpot		Pick 3	Pick 3 Sum It Up	Cash 5	Texas Two Step	Jackpot		Mega Millions	Jackpot		Megaplier	Daily 4	Daily 4 Sum It Up	Total	Per Cap.
				W	S					M/T	TH/F		T	F					
3/7/2009	59,552,257.00	0	4,928,440.00	23	25	6,133,789.00	128,599.00	1,487,185.00	1,984,358.00	1,350	1,600	6,898,457.00	212	12	1,349,427.00	971,644.50	113,236.00	83,547,392.50	3.50
3/14/2009	53,754,084.00	1139 (\$2.N), 1079 (\$5.N) - 3/09/09	4,752,592.00	26	28	5,850,166.00	120,684.50	1,418,127.00	2,112,571.00	1,900	2,150	2,782,204.00	16	26	698,214.00	925,615.00	109,657.50	72,523,915.00	3.03
3/21/2009	52,581,107.00	1107 (\$1.N), 1154 (\$3.N), 1057 (\$10.N) - 3/16/09; 1102 (\$2.N) - 3/19/09	3,437,818.00	4	5	5,776,041.50	117,294.00	1,399,720.00	880,620.00	200	225	2,595,785.00	12	16	653,517.00	934,185.00	108,057.50	68,484,145.00	2.87
3/28/2009	52,560,961.00	1130 (\$5.N), 1150 (\$10.N) - 3/23/09	3,486,731.00	6	7	5,633,454.50	114,269.50	1,381,550.00	901,673.00	300	200	2,845,499.00	24	34	701,971.00	925,093.50	104,691.50	68,655,894.00	2.87
4/4/2009	56,249,759.00	1151 (\$2.N), 1101 (\$50.N) - 3/30/09	3,746,083.00	8	9	5,893,043.50	122,332.00	1,429,598.00	940,614.00	225	300	3,321,274.00	43	54	794,282.00	998,042.00	111,733.50	73,606,761.00	3.08
4/11/2009	54,440,987.00	1153 (\$2.N) - 4/07/09; 1152 (\$3.N) - 4/08/09	3,594,176.00	10	4	5,893,551.00	120,491.50	1,394,879.00	933,807.00	425	200	3,772,700.00	65	78	857,890.00	987,127.50	105,977.50	72,101,586.50	3.02
4/18/2009	52,755,834.00	1145 (\$1.N), 1148 (\$5.N) - 4/13/09	3,462,217.00	5	6	5,627,572.00	117,123.50	1,374,682.00	829,493.00	225	200	4,960,982.00	92	109	1,040,136.00	957,161.00	100,218.50	71,225,419.00	2.98
4/25/2009	51,450,968.00	1051 (\$7.N) - 4/20/09	3,517,624.00	7	8	5,408,672.50	117,314.50	1,347,754.00	876,206.00	225	300	6,614,120.95	130	155	1,298,021.00	937,777.00	99,408.50	71,667,866.45	3.00
5/2/2009	52,327,090.00	1161 (\$1.N), 1081 (\$5.N) - 4/27/09	3,679,438.00	9	10	5,512,770.50	113,755.50	1,362,174.00	880,888.00	425	200	9,277,686.00	181	225	1,653,107.00	937,874.00	102,880.00	75,847,663.00	3.17
5/9/2009	53,214,412.00	0	3,594,635.00	11	4	5,603,106.00	118,185.50	1,389,454.00	823,436.00	225	200	2,961,748.00	12	17	718,169.00	967,592.00	104,881.00	69,455,618.50	2.91
5/16/2009	50,785,227.00	1131 (\$2.N), 1134 (\$5.N) - 5/11/09	3,332,475.00	5	6	5,417,197.00	112,501.00	1,356,843.00	842,436.00	225	275	3,116,696.00	28	38	748,141.00	959,922.50	104,332.00	66,775,770.50	2.79
weekly change	-4.56%		-6.25%			-3.32%	-4.81%	-2.35%	2.31%			5.23%			4.17%	-0.79%	-0.52%	-3.86%	
	SALES		SALES			SALES	SALES	SALES	SALES			SALES			SALES	SALES	SALES	SALES	% of Sales
Startup to date	35,451,636,323.00		10,414,535,900.00			3,503,676,364.50	10,797,050.50	2,170,101,010.00	462,352,961.00			1,066,602,612.45			249,958,228.00	74,602,222.50	12,243,654.00	53,624,640,297.95	100.0%
Calendar Year to date	1,069,732,648.00		75,166,608.00			112,516,865.50	175,670.50	27,362,556.00	21,193,824.00			82,645,708.95			18,090,413.00	18,394,564.00	2,102,846.50	1,427,381,704.45	100.0%
Fiscal Year to date 2009	1,971,050,321.00		135,438,853.00			204,957,412.00	4,311,220.50	50,945,000.00	36,087,243.00			140,464,017.45			31,750,194.00	32,385,251.00	3,904,850.50	2,611,294,362.45	100.0%