



WEEKLY SALES SUMMARY

Unaudited

Week Ending: 05/23/2009

Texas Lottery Commission
Fiscal Year to Date Sales Comparison
Unaudited

Through the week ending 05/23/2009 (38 weeks)

Sales by Game	FY 2007 *	FY 2008 **	FY 2009	\$ Change		% Change	
				FY 2009 to FY 2007	FY 2009 to FY 2008	FY 2009 to FY 2007	FY 2009 to FY 2008
Instant	\$ 2,106,661,013	\$ 2,066,698,957	\$ 2,027,617,398	\$ -79,043,615	\$ -39,081,559	-3.8%	-1.9%
Lotto Texas	177,791,213	150,703,325	138,863,918	-38,927,295	-11,839,407	-21.9%	-7.9%
Pick 3	229,783,045	210,709,023	210,320,563	-19,462,482	-388,460	-8.5%	-0.2%
Pick 3 Sum It Up	-	4,720,266	4,422,364	4,422,364	-297,902	-	-6.3%
Cash 5	64,251,943	55,955,641	52,301,979	-11,949,964	-3,653,662	-18.6%	-6.5%
Texas Two Step	37,436,160	34,665,996	37,149,189	-286,971	2,483,193	-0.8%	7.2%
Mega Millions	132,915,817	130,425,820	143,254,758	10,338,941	12,828,938	7.8%	9.8%
Megaplier	31,026,688	30,583,632	32,445,009	1,418,321	1,861,377	4.6%	6.1%
Daily 4	-	31,108,604	33,352,627	33,352,627	2,244,023	-	7.2%
Daily 4 Sum It Up	-	6,735,348	4,008,082	4,008,082	-2,727,266	-	-40.5%
Total	\$ 2,779,865,879	\$ 2,722,306,610	\$ 2,683,735,886	\$ -96,129,993	\$ -38,570,724	-3.5%	-1.4%

* 3 extra days in 2007 ** 2 extra days in 2008

Texas Lottery Commission
Fiscal Year Over Year Change in Sales
Unaudited
FY 2009 Compared to FY 2008

Week	FY 2009 Week Ending	INSTANT TICKETS				ON-LINE GAMES				TOTAL SALES			
		FY 2009	FY 2008	Difference	% change - Cumulative Sales	FY 2009	FY 2008	Difference	% change - Cumulative Sales	FY 2009	FY 2008	Difference	% change - Cumulative Sales
1	9/6/2008**	\$44,890,104	\$62,376,229	(\$17,486,125)	-28.0%	\$14,722,011	\$19,372,224	(\$4,650,213)	-24.0%	\$59,612,115	\$81,748,453	(\$22,136,338)	-27.1%
2	9/13/2008	\$46,309,551	\$52,458,866	(\$6,149,315)	-20.6%	\$13,704,860	\$16,926,163	(\$3,221,303)	-21.7%	\$60,014,411	\$69,385,029	(\$9,370,618)	-20.8%
3	9/20/2008	\$42,923,171	\$49,998,934	(\$7,075,763)	-18.6%	\$12,291,263	\$15,792,283	(\$3,501,020)	-21.8%	\$55,214,434	\$65,791,217	(\$10,576,783)	-19.4%
4	9/27/2008	\$47,042,801	\$49,894,175	(\$2,851,374)	-15.6%	\$14,222,339	\$14,800,514	(\$578,175)	-17.9%	\$61,265,140	\$64,694,689	(\$3,429,549)	-16.2%
5	10/4/2008	\$50,747,162	\$53,486,863	(\$2,739,701)	-13.5%	\$15,784,472	\$16,618,430	(\$833,958)	-15.3%	\$66,531,634	\$70,105,293	(\$3,573,659)	-14.0%
6	10/11/2008	\$49,763,789	\$50,918,020	(\$1,154,231)	-11.7%	\$15,622,498	\$15,601,410	\$21,088	-12.9%	\$65,386,287	\$66,519,430	(\$1,133,143)	-12.0%
7	10/18/2008	\$49,299,053	\$50,532,253	(\$1,233,200)	-10.5%	\$15,167,940	\$15,682,666	(\$514,726)	-11.6%	\$64,466,993	\$66,214,919	(\$1,747,926)	-10.7%
8	10/25/2008	\$49,977,581	\$50,347,450	(\$369,869)	-9.3%	\$14,525,843	\$15,586,516	(\$1,060,673)	-11.0%	\$64,503,424	\$65,933,966	(\$1,430,542)	-9.7%
9	11/1/2008	\$50,346,542	\$53,953,733	(\$3,607,191)	-9.0%	\$14,838,845	\$16,775,983	(\$1,937,139)	-11.1%	\$65,185,387	\$70,729,716	(\$5,544,330)	-9.5%
10	11/8/2008	\$54,860,087	\$53,635,090	\$1,224,997	-7.9%	\$16,057,069	\$15,912,791	\$144,278	-9.9%	\$70,917,156	\$69,547,881	\$1,369,275	-8.3%
11	11/15/2008	\$53,484,812	\$51,254,401	\$2,230,411	-6.8%	\$15,829,819	\$15,797,076	\$32,744	-9.0%	\$69,314,631	\$67,051,477	\$2,263,155	-7.3%
12	11/22/2008	\$52,806,511	\$50,897,817	\$1,908,694	-5.9%	\$16,460,748	\$15,801,720	\$659,028	-7.9%	\$69,267,259	\$66,699,537	\$2,567,722	-6.4%
13	11/29/2008	\$52,199,741	\$53,913,115	(\$1,713,374)	-5.7%	\$17,397,576	\$17,055,505	\$342,072	-7.1%	\$69,597,317	\$70,968,620	(\$1,371,303)	-6.0%
14	12/6/2008	\$56,731,851	\$55,702,697	\$1,029,154	-5.1%	\$20,363,789	\$17,900,717	\$2,463,073	-5.5%	\$77,095,640	\$73,603,414	\$3,492,227	-5.2%
15	12/13/2008	\$54,109,617	\$53,703,516	\$406,101	-4.7%	\$22,952,228	\$17,820,841	\$5,131,387	-3.0%	\$77,061,845	\$71,524,357	\$5,537,488	-4.3%
16	12/20/2008	\$55,777,328	\$57,592,769	(\$1,815,441)	-4.6%	\$15,833,517	\$17,436,233	(\$1,602,716)	-3.4%	\$71,610,845	\$75,029,002	(\$3,418,157)	-4.3%
17	12/27/2008	\$57,597,885	\$57,696,003	(\$98,118)	-4.3%	\$15,851,771	\$14,743,680	\$1,108,091	-2.9%	\$73,449,656	\$72,439,683	\$1,009,973	-4.0%
18	1/3/2009	\$57,582,115	\$57,935,952	(\$353,837)	-4.1%	\$16,900,028	\$15,704,450	\$1,195,578	-2.3%	\$74,482,143	\$73,640,402	\$841,741	-3.7%
19	1/10/2009	\$54,250,945	\$55,360,542	(\$1,109,597)	-4.0%	\$16,203,220	\$15,691,540	\$511,680	-2.0%	\$70,454,165	\$71,052,082	(\$597,917)	-3.5%
20	1/17/2009	\$51,625,339	\$54,920,166	(\$3,294,827)	-4.1%	\$15,701,605	\$16,259,669	(\$558,064)	-2.1%	\$67,326,944	\$71,179,835	(\$3,852,891)	-3.6%
21	1/24/2009	\$52,789,573	\$54,439,890	(\$1,650,317)	-4.1%	\$15,897,473	\$16,691,724	(\$794,251)	-2.2%	\$68,687,046	\$71,131,614	(\$2,444,568)	-3.6%
22	1/31/2009	\$55,453,471	\$57,464,382	(\$2,010,911)	-4.0%	\$16,908,272	\$17,968,227	(\$1,059,955)	-2.4%	\$72,361,743	\$75,432,609	(\$3,070,866)	-3.7%
23	2/7/2009	\$62,247,711	\$60,715,019	\$1,532,692	-3.7%	\$18,354,314	\$20,097,338	(\$1,743,025)	-2.7%	\$80,602,025	\$80,812,357	(\$210,333)	-3.5%
24	2/14/2009	\$60,509,056	\$57,093,143	\$3,415,913	-3.3%	\$19,218,078	\$22,179,908	(\$2,961,831)	-3.3%	\$79,727,134	\$79,273,051	\$454,083	-3.3%
25	2/21/2009	\$59,194,623	\$57,627,047	\$1,567,576	-3.0%	\$21,098,199	\$27,230,539	(\$6,132,340)	-4.5%	\$80,292,822	\$84,857,586	(\$4,564,764)	-3.4%
26	2/28/2009	\$58,857,216	\$55,591,667	\$3,265,549	-2.7%	\$24,116,924	\$17,016,118	\$7,100,806	-2.8%	\$82,974,140	\$72,607,785	\$10,366,355	-2.7%
27	3/7/2009	\$59,552,257	\$56,837,481	\$2,714,776	-2.4%	\$23,995,136	\$16,690,193	\$7,304,943	-1.1%	\$83,547,393	\$73,527,674	\$10,019,719	-2.1%
28	3/14/2009	\$53,754,084	\$54,587,112	(\$833,028)	-2.4%	\$18,769,831	\$16,448,165	\$2,321,667	-0.6%	\$72,523,915	\$71,035,277	\$1,488,639	-1.9%
29	3/21/2009	\$52,581,107	\$53,098,937	(\$517,830)	-2.3%	\$15,903,038	\$16,639,184	(\$736,146)	-0.7%	\$68,484,145	\$69,738,121	(\$1,253,976)	-1.9%
30	3/28/2009	\$52,560,961	\$53,933,689	(\$1,372,728)	-2.3%	\$16,094,933	\$17,698,625	(\$1,603,692)	-1.0%	\$68,655,894	\$71,632,314	(\$2,976,420)	-2.0%
31	4/4/2009	\$56,249,759	\$57,598,982	(\$1,349,223)	-2.3%	\$17,357,002	\$17,665,411	(\$308,409)	-1.0%	\$73,606,761	\$75,264,393	(\$1,657,632)	-2.0%
32	4/11/2009	\$54,440,987	\$53,954,185	\$486,802	-2.2%	\$17,660,600	\$15,860,784	\$1,799,816	-0.7%	\$72,101,587	\$69,814,969	\$2,286,618	-1.9%
33	4/18/2009	\$52,755,834	\$53,946,736	(\$1,190,902)	-2.2%	\$18,469,585	\$16,452,676	\$2,016,909	-0.3%	\$71,225,419	\$70,399,412	\$826,007	-1.8%
34	4/25/2009	\$51,450,968	\$51,533,006	(\$82,038)	-2.2%	\$20,216,898	\$16,873,949	\$3,342,950	0.3%	\$71,667,866	\$68,406,955	\$3,260,912	-1.6%
35	5/2/2009	\$52,327,090	\$53,250,568	(\$923,478)	-2.2%	\$23,520,573	\$18,202,103	\$5,318,471	1.2%	\$75,847,663	\$71,452,671	\$4,394,993	-1.4%
36	5/9/2009	\$53,214,412	\$54,060,849	(\$846,437)	-2.1%	\$16,241,207	\$18,422,562	(\$2,181,355)	0.8%	\$69,455,619	\$72,483,411	(\$3,027,792)	-1.4%
37	5/16/2009	\$50,785,227	\$54,010,641	(\$3,225,414)	-2.2%	\$15,990,544	\$20,728,360	(\$4,737,816)	0.0%	\$66,775,771	\$74,739,001	(\$7,963,230)	-1.7%
38	5/23/2009	\$56,567,077	\$50,377,032	\$6,190,045	-1.9%	\$15,874,447	\$15,461,384	\$413,063	0.1%	\$72,441,524	\$65,838,416	\$6,603,108	-1.4%
39	5/30/2009		\$49,545,080				\$15,175,370				\$64,720,450		
40	6/6/2009		\$53,702,986				\$15,982,166				\$69,685,152		

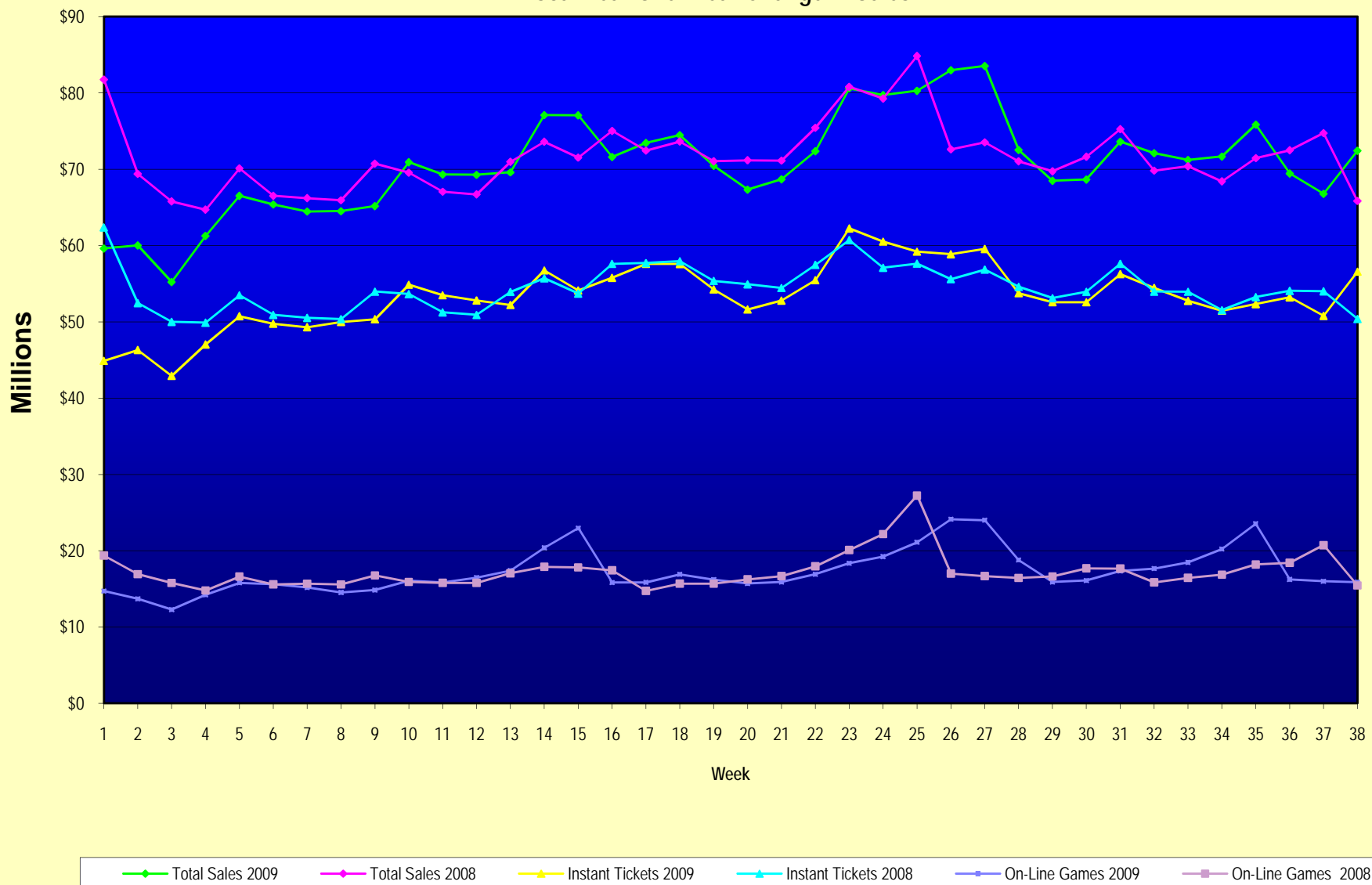
Note: Week 1 is not a full week of sales as this report is prepared on a Fiscal Year basis.

Texas Lottery Commission
Fiscal Year Over Year Change in Sales
Unaudited
FY 2009 Compared to FY 2008

Week	FY 2009 Week Ending	INSTANT TICKETS				ON-LINE GAMES				TOTAL SALES			
		FY 2009	FY 2008	Difference	% change - Cumulative Sales	FY 2009	FY 2008	Difference	% change - Cumulative Sales	FY 2009	FY 2008	Difference	% change - Cumulative Sales
41	6/13/2009		\$51,171,483				\$16,589,087				\$67,760,570		
42	6/20/2009		\$50,650,362				\$15,728,484				\$66,378,846		
43	6/27/2009		\$49,258,266				\$15,250,905				\$64,509,171		
44	7/4/2009		\$53,393,355				\$16,270,619				\$69,663,974		
45	7/11/2009		\$53,127,756				\$16,914,922				\$70,042,678		
46	7/18/2009		\$51,593,146				\$17,752,738				\$69,345,884		
47	7/25/2009		\$49,902,181				\$16,706,145				\$66,608,326		
48	8/1/2009		\$49,605,420				\$16,254,383				\$65,859,803		
49	8/8/2009		\$50,961,907				\$16,770,496				\$67,732,403		
50	8/15/2009		\$49,452,511				\$16,749,487				\$66,201,998		
51	8/22/2009		\$49,249,518				\$17,286,302				\$66,535,820		
52	8/29/2009		\$49,468,928				\$18,109,997				\$67,578,925		
53	9/5/2009		\$6,054,239				\$493,109				\$6,547,348		
Total thru Current Week		\$2,027,617,398	\$2,066,698,957	(\$39,081,559)	-1.9%	\$656,118,488	\$655,607,653	\$510,835	0.1%	\$2,683,735,886	\$2,722,306,610	(\$38,570,724)	-1.4%
Fiscal Year Total		\$2,027,617,398	\$2,783,836,095			\$656,118,488	\$887,641,858			\$2,683,735,886	\$3,671,477,953		

** FY 2009 includes 6 days; FY 2008 includes 8 days
FY 2009 average daily sales are \$9,242,258. Two days at average daily sales are \$18,484,516.

Texas Lottery Commission Fiscal Year Over Year Change in Sales



Note: Week 1 is not a full week of sales as this report is prepared on a Fiscal Year basis.

Texas Lottery Commission
Instant Tickets by Price Point
Sales, Prize Expense, Sales Contribution and Payout Percentage With Year Over Year Changes
Unaudited

Fiscal Year	Price Point	# of Active Games	FY Sales	% of Instant Ticket Sales	Year over Year Change in Sales	FY Prize Expense	Year over Year Change in Prize Expense	FY Sales Contribution	Year over Year Change in Contribution	Average Prize Payout %	Year over Year Change in Payout %
2008	\$1.00	44	171,232,537	8.3%		103,202,564		68,029,973		60.3%	0.3%
thru	\$2.00	52	342,649,212	16.6%		223,131,873		119,517,339		65.1%	0.4%
5/24/2008	\$3.00	16	184,167,507	8.9%		121,063,549		63,103,958		65.7%	-0.1%
	\$5.00	46	571,731,531	27.7%		388,333,517		183,398,014		67.9%	-0.1%
	\$7.00	12	119,381,934	5.8%		81,189,916		38,192,018		68.0%	0.1%
	\$10.00	19	311,383,266	15.1%		217,840,259		93,543,007		70.0%	-0.8%
	\$20.00	8	152,021,940	7.4%		109,242,383		42,779,557		71.9%	-0.2%
	\$25.00	2	50,931,700	2.5%		36,979,901		13,951,799		72.6%	0.3%
	\$30.00	3	47,962,530	2.3%		34,719,188		13,243,342		72.4%	0.2%
	\$50.00	2	115,236,800	5.6%		83,141,114		32,095,686		72.1%	0.0%
Total		204	\$2,066,698,957			\$1,398,844,263		\$667,854,694		67.7%	0.3%
2009	\$1.00	43	177,201,857	8.7%		106,605,779		70,596,078		60.2%	0.1%
thru	\$2.00	40	344,380,174	17.0%		224,442,455		119,937,719		65.2%	-0.2%
5/23/2009	\$3.00	16	211,464,177	10.4%		138,744,900		72,719,277		65.6%	-0.2%
	\$5.00	44	625,353,419	30.8%		425,296,238		200,057,181		68.0%	0.1%
	\$7.00	8	105,642,796	5.2%		71,844,444		33,798,352		68.0%	0.0%
	\$10.00	18	286,699,390	14.1%		200,592,490		86,106,900		70.0%	0.0%
	\$20.00	9	176,238,880	8.7%		126,686,573		49,552,307		71.9%	0.2%
	\$25.00	1	2,372,325	0.1%		1,725,527		646,798		72.7%	0.2%
	\$30.00	3	10,023,930	0.5%		7,263,711		2,760,219		72.5%	0.1%
	\$50.00	4	88,240,450	4.4%		64,943,359		23,297,091		73.6%	2.0%
Total		186	\$2,027,617,398			\$1,368,145,476		\$659,471,922		67.5%	-0.3%
Variance	\$1.00	-1	5,969,320		3.5%	3,403,214	3.3%	2,566,106	3.8%	-0.11%	
2009 to	\$2.00	-12	1,730,962		0.5%	1,310,582	0.6%	420,380	0.4%	0.05%	
2008	\$3.00	0	27,296,670		14.8%	17,681,351	14.6%	9,615,319	15.2%	-0.12%	
	\$5.00	-2	53,621,888		9.4%	36,962,721	9.5%	16,659,167	9.1%	0.09%	
	\$7.00	-4	-13,739,138		-11.5%	-9,345,472	-11.5%	-4,393,666	-11.5%	0.00%	
	\$10.00	-1	-24,683,876		-7.9%	-17,247,769	-7.9%	-7,436,107	-7.9%	0.01%	
	\$20.00	1	24,216,940		15.9%	17,444,190	16.0%	6,772,750	15.8%	0.02%	
	\$25.00	-1	-48,559,375		-95.3%	-35,254,374	-95.3%	-13,305,001	-95.4%	0.13%	
	\$30.00	0	-37,938,600		-79.1%	-27,455,477	-79.1%	-10,483,123	-79.2%	0.08%	
	\$50.00	2	-26,996,350		-23.4%	-18,197,754	-21.9%	-8,798,596	-27.4%	1.45%	
Total		-18	-\$39,081,555		-1.9%	-\$30,698,786	-2.2%	-\$8,382,773	-1.3%	-0.21%	

Texas Lottery Commission
Instant Tickets by Price Point
Sales, Prize Expense, Sales Contribution and Payout Percentage With Year Over Year Changes
Unaudited

Notes - Instant Ticket Variances

		FY 2009		FY 2008		Difference
Sales	\$1 - \$7		\$1,464,042,423		\$1,389,162,721	\$74,879,702
Prize Exp.	\$1 - \$7		\$966,933,816		\$916,921,419	\$50,012,397
Sales Cont.	\$1 - \$7		\$497,108,607		\$472,241,302	\$24,867,305
Prize Exp. %	\$1 - \$7		66.0%		66.0%	0.0%
		FY 2009		FY 2008		Difference
Sales	\$10 - \$50		\$563,574,975		\$677,536,236	-\$113,961,261
Prize Exp.	\$10 - \$50		\$401,211,661		\$481,922,844	-\$80,711,183
Sales Cont.	\$10 - \$50		\$162,363,314		\$195,613,392	-\$33,250,078
Prize Exp. %	\$10 - \$50		71.2%		71.1%	0.1%
		FY 2009		FY 2008		Difference
Sales	Instant		\$2,027,617,398		\$2,066,698,957	-\$39,081,559
Prize Exp.	Instant		\$1,368,145,476		\$1,398,844,263	-\$30,698,786
Sales Cont.	Instant		\$659,471,922		\$667,854,694	-\$8,382,773
Prize Exp. %	Instant		67.5%		67.7%	-0.2%

		FY 2009		FY 2008		Difference
Sales	\$1 - \$10		\$1,750,741,813		\$1,700,545,987	\$50,195,826
Prize Exp.	\$1 - \$10		\$1,167,526,306		\$1,134,761,678	\$32,764,628
Sales Cont.	\$1 - \$10		\$583,215,507		\$565,784,309	\$17,431,198
Prize Exp. %	\$1 - \$10		66.7%		66.7%	0.0%
		FY 2009		FY 2008		Difference
Sales	\$20 - \$50		\$276,875,585		\$366,152,970	-\$89,277,385
Prize Exp.	\$20 - \$50		\$200,619,170		\$264,082,585	-\$63,463,414
Sales Cont.	\$20 - \$50		\$76,256,415		\$102,070,385	-\$25,813,971
Prize Exp. %	\$20 - \$50		72.5%		72.1%	0.3%
		FY 2009		FY 2008		Difference
Sales	Instant		\$2,027,617,398		\$2,066,698,957	-\$39,081,559
Prize Exp.	Instant		\$1,368,145,476		\$1,398,844,263	-\$30,698,786
Sales Cont.	Instant		\$659,471,922		\$667,854,694	-\$8,382,773
Prize Exp. %	Instant		67.5%		67.7%	-0.2%

Texas Lottery Commission
Weekly Sales Summary
& Comparison to Previous Week
 Unaudited

	Week Ending 05/23/2009	% of Sales	Week Ending 05/16/2009	% of Sales	\$ change	% change
	<u>THIS WEEK</u>		<u>LAST WEEK</u>			
Total Sales	<u>\$72,441,524</u>		<u>\$66,775,771</u>		<u>\$5,665,753</u>	8.48%
Instant Tickets	<u>\$56,567,077</u>	78.1%	<u>\$50,785,227</u>	76.1%	<u>\$5,781,850</u>	11.38%
Lotto Texas	\$3,425,065	4.7%	\$3,332,475	5.0%	\$92,590	2.78%
Pick 3	\$5,363,151	7.4%	\$5,417,197	8.1%	-\$54,047	-1.00%
Pick 3 Sum It Up	\$111,144	0.2%	\$112,501	0.2%	-\$1,358	-1.21%
Cash 5	\$1,356,979	1.9%	\$1,356,843	2.0%	\$136	0.01%
Texas Two Step	\$1,061,946	1.5%	\$842,436	1.3%	\$219,510	26.06%
Mega Millions	\$2,790,741	3.9%	\$3,116,696	4.7%	-\$325,955	-10.46%
Megaplier	\$694,815	1.0%	\$748,141	1.1%	-\$53,326	-7.13%
Daily 4	\$967,376	1.3%	\$959,923	1.4%	\$7,453	0.78%
Daily 4 Sum It Up	\$103,231	0.1%	\$104,332	0.2%	-\$1,101	-1.06%
Total Online Sales	<u>\$15,874,447</u>		<u>\$15,990,544</u>		<u>-\$116,097</u>	-0.73%

* Totals may not sum due to rounding.

Texas Lottery Commission
Weekly Sales Summary
Unaudited

INSTANT TICKETS
TOP TEN SELLING GAMES

For the Week Ending : 05/23/2009

Rank	Price Point	Game	Sales (Millions)
1	\$ 20	\$500,000,000 BLOCKBUSTER	\$ 6.515
2	\$ 5	\$50,000 TREASURES	\$ 3.740
3	\$ 50	\$140,000,000 EXTREME PAYOUT	\$ 2.857
4	\$ 3	BONUS CASHWORD	\$ 2.806
5	\$ 5	KING OF CASH	\$ 2.432
6	\$ 10	PRECIOUS JEWELS	\$ 2.307
7	\$ 5	SAPPHIRE BLUE 5'S	\$ 2.166
8	\$ 2	BONUS BLACKJACK	\$ 1.970
9	\$ 10	SET FOR LIFE	\$ 1.892
10	\$ 7	\$75,000 CASINO	\$ 1.883

Texas Lottery Commission
Prize Payout Tracking Report
Unaudited

Through Week Ending 05/23/2009

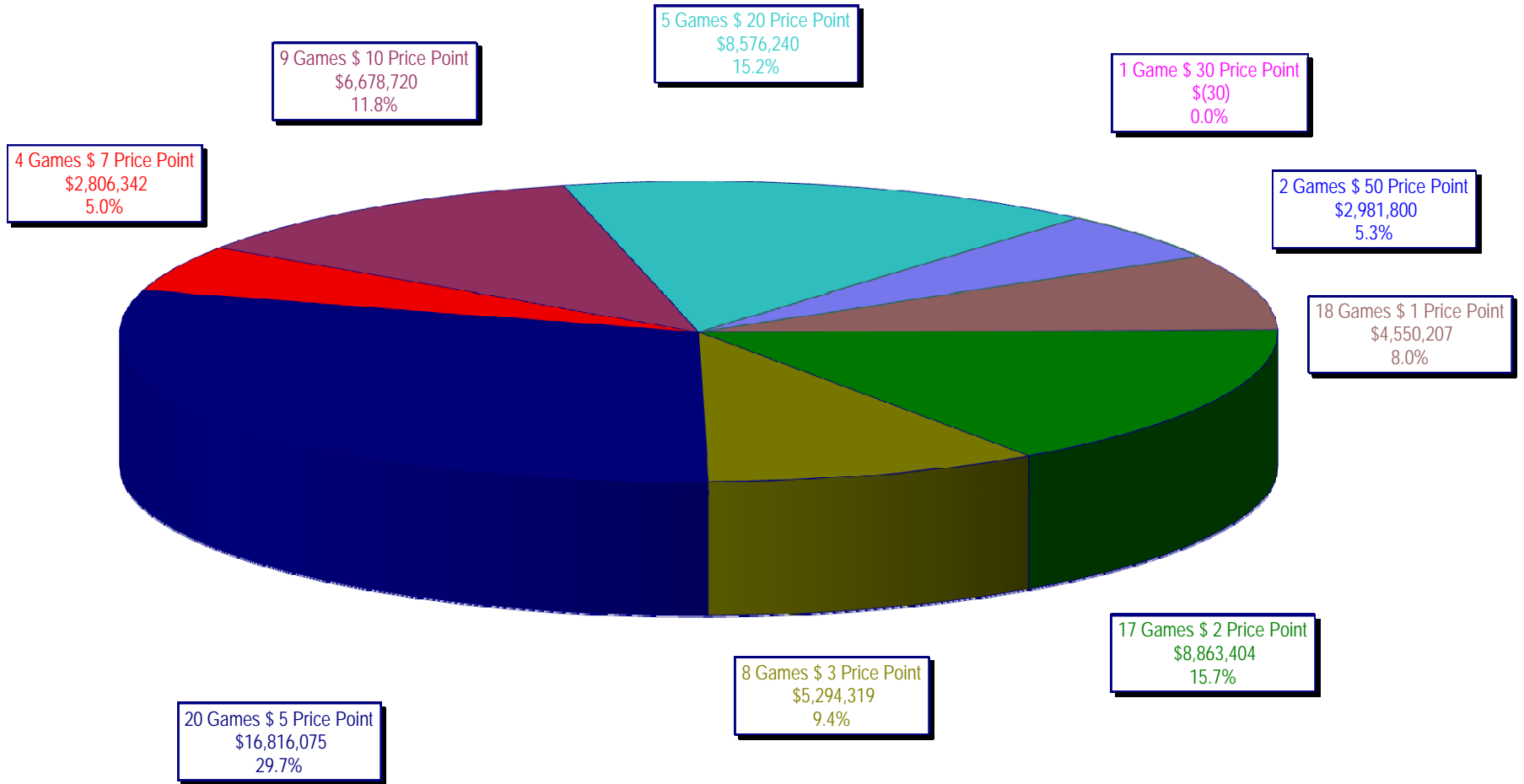
On-Line Sales

		FY Sales Through Week Ending 5/23/2009		FY Prize Expense Through Week Ending 5/23/2009	Actual* Prize Payout	Base Payout (Prize Pool)
Lotto	\$	138,863,918	\$	70,001,837	50.41%	50.00%
Pick 3		210,320,563		101,305,780	48.17%	50.00%
Pick 3 Sum It Up		4,422,364		2,004,320	45.32%	50.00%
Cash 5		52,301,979		26,255,492	50.20%	50.00%
Texas Two-Step		37,149,189		19,774,386	53.23%	50.00%
Mega Millions		143,254,758		71,398,931	49.84%	50.00%**
Megaplier		32,445,009		15,565,586	47.98%	N/A
Daily 4		33,352,627		16,433,850	49.27%	50.00%
Daily 4-Sum It Up		4,008,082		1,683,705	42.01%	50.00%
Totals	\$	656,118,488	\$	324,423,886	49.45%	

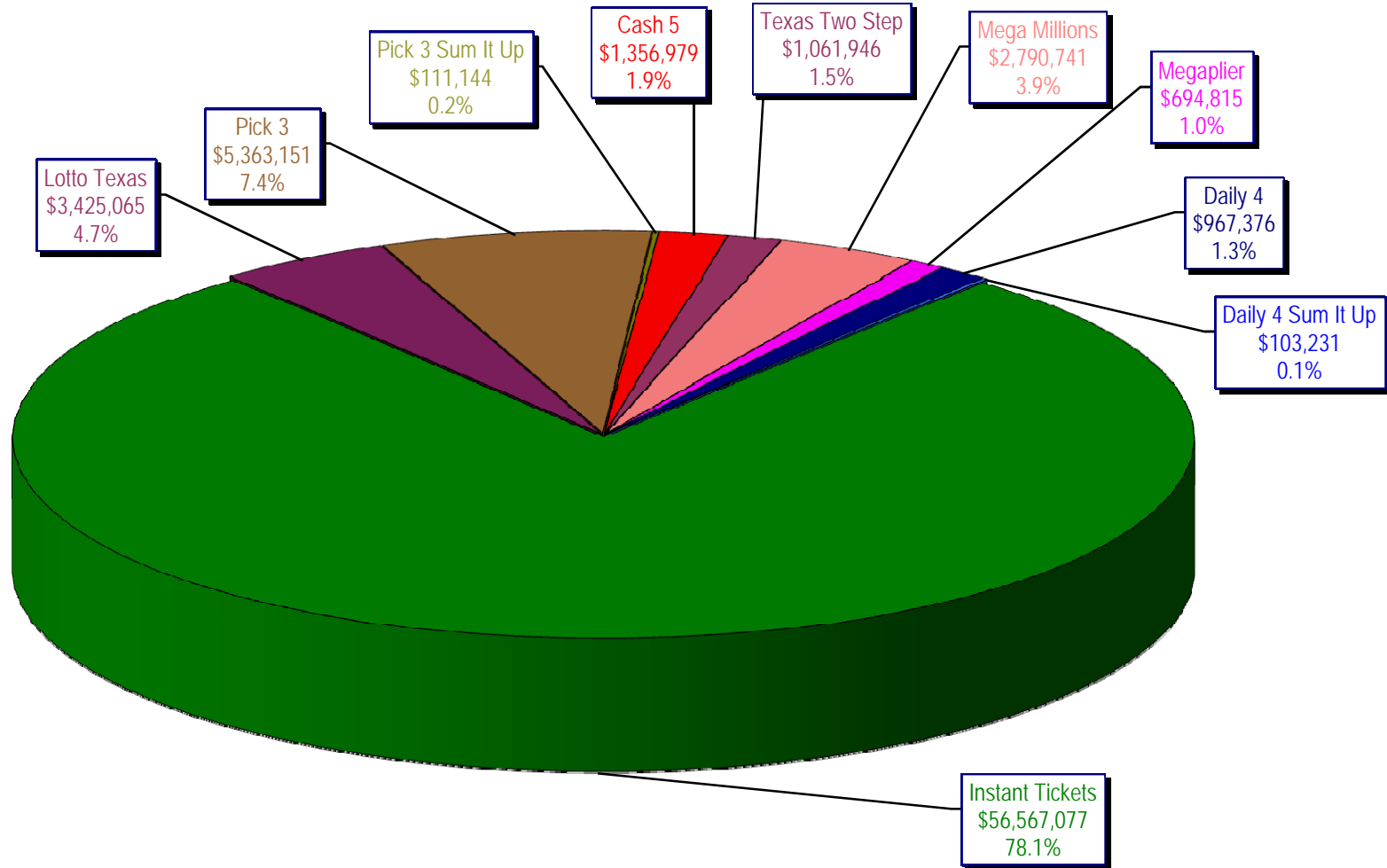
* Before Unclaimed Prizes

** Estimated; depends on # of guaranteed prizes won in Texas

Texas Lottery Commission
Instant Ticket Sales
For the Week Ending 05/23/2009
(Unaudited)



Texas Lottery Commission
All Game Sales
For the Week Ending 05/23/2009
(Unaudited)



Texas Lottery Commission - Weekly Sales Summary for FY 2009 (Unaudited)

Week Ended	Instant Games	New Games & Dates	Lotto Texas	Jackpot		Pick 3	Pick 3 Sum It Up	Cash 5	Texas Two Step	Jackpot		Mega Millions	Jackpot		Megaplier	Daily 4	Daily 4 Sum It Up	Total	Per Cap.
				W	S					M/T	TH/F		T	F					
9/6/2008	50,944,343.00	1108 (\$2,N), 1088 (\$3, N) - 9/01/08	3,378,718.00	5	6	5,436,414.00	122,123.00	1,396,622.00	890,346.00	350	450	2,445,490.00	12	16	649,090.00	786,482.50	109,834.00	66,159,462.50	2.77
9/13/2008	46,309,551.00	1109 (\$1,N), 1098 (\$5, N) - 9/08/08	3,020,089.00	7	8	4,705,585.50	105,899.00	1,279,412.00	856,199.00	600	200	2,327,214.00	24	12	617,672.00	696,633.00	96,156.50	60,014,411.00	2.51
9/20/2008	42,923,171.00	0	3,054,093.00	9	10	4,121,734.50	90,718.00	1,155,350.00	637,792.00	225	250	1,978,127.00	15	12	540,225.00	627,210.00	86,013.50	55,214,434.00	2.31
9/27/2008	47,042,801.00	1111 (\$2,N), 1099 (\$5, N) - 9/22/08	3,427,671.00	11	12	4,821,563.00	103,189.50	1,288,062.00	834,307.00	275	425	2,322,862.00	16	24	617,085.00	709,741.50	97,858.00	61,265,140.00	2.56
10/4/2008	50,747,162.00	1113 (\$1,N) 9/29/08	3,675,683.00	13	14	5,305,711.00	116,332.50	1,369,040.00	1,074,874.00	525	650	2,671,927.00	32	42	693,845.00	770,782.50	106,277.00	66,531,634.00	2.78
10/11/2008	49,763,789.00	0	3,732,365.00	15	16	5,287,094.00	114,665.50	1,370,334.00	1,305,250.00	800	975	2,306,070.00	12	16	622,120.00	778,204.00	106,395.00	65,386,286.50	2.74
10/18/2008	49,299,053.00	1117 (\$3,N), 1118 (\$20,N) - 10/13/08	3,780,438.00	17	18	5,149,258.00	109,530.00	1,355,601.00	741,849.00	200	200	2,500,644.00	23	32	652,198.00	776,366.00	102,056.00	64,466,993.00	2.70
10/25/2008	49,977,581.00	1119 (\$1,N), 1120 (\$5,N) - 10/20/08	3,210,762.00	4	5	5,099,671.00	107,104.50	1,339,079.00	789,649.00	225	275	2,456,965.00	42	12	641,206.00	778,434.00	102,972.50	64,503,424.00	2.70
11/1/2008	50,346,542.00	1121 (\$2,N), 1122 (\$10,N) - 10/27/08	3,325,641.00	6	7	5,234,124.00	109,983.00	1,339,046.00	946,035.00	375	475	2,347,596.00	16	23	626,235.00	805,572.00	104,612.50	65,185,386.50	2.73
11/8/2008	54,860,087.00	1123 (\$3,N), 1124 (\$7,N) - 11/03/08; 1103 (\$3,N) - 11/05/08; 1063 (\$3,N) - 11/07/08	3,290,417.00	4	5	5,686,701.00	118,495.00	1,397,985.00	1,158,101.00	625	750	2,729,302.50	31	42	692,662.00	871,230.00	112,175.50	70,917,156.00	2.97
11/15/2008	53,484,812.00	1125 (\$1, N), 1126 (\$5,N) - 11/10/08	3,336,934.00	6	7	5,459,984.00	112,884.00	1,366,024.00	766,955.00	200	225	3,102,251.00	51	62	749,736.00	830,957.00	104,094.00	69,314,631.00	2.90
11/22/2008	52,806,511.00	0	3,452,481.00	8	9	5,329,591.00	108,861.50	1,358,271.00	743,950.00	200	200	3,666,517.00	73	86	847,201.00	849,077.50	104,797.50	69,267,258.50	2.90
11/29/2008	52,199,741.00	1127 (\$2,N), 1128 (\$5,N) - 11/24/08	3,585,374.00	10	11	5,340,783.50	111,443.00	1,315,233.00	686,077.00	200	225	4,441,715.00	96	111	968,906.00	845,475.50	102,569.00	69,597,317.00	2.91
12/6/2008	56,731,851.00	0	3,794,991.00	12	13	5,752,593.00	121,663.50	1,416,446.00	780,328.00	250	200	6,238,355.00	128	146	1,270,214.00	881,841.50	107,357.00	77,095,640.00	3.23
12/13/2008	54,109,617.00	1129 (\$1, N) - 12/08/08	3,315,658.00	4	5	5,580,770.00	114,295.50	1,384,858.00	766,893.00	225	250	9,150,536.00	170	207	1,691,121.00	846,176.50	101,919.50	77,061,844.50	3.22
12/20/2008	55,777,328.00	1104 (\$2,N), 1105 (\$5,N), 1106 (\$10,N) - 12/15/08	3,432,340.00	6	7	5,741,120.00	116,075.50	1,401,805.00	741,945.00	200	200	2,736,234.00	12	16	687,875.00	871,579.50	104,543.00	71,610,845.00	3.00
12/27/2008	57,597,885.00	1077 (\$1,N), 1110 (\$1,N) - 12/22/08	3,582,169.00	8	4	5,628,081.50	115,323.00	1,340,590.00	708,906.00	225	250	2,842,167.00	22	29	706,042.00	828,346.00	100,146.00	73,449,655.50	3.07
1/3/2009	57,582,115.00	0	3,784,763.00	5	6	5,690,220.50	120,519.50	1,406,807.00	934,000.00	325	525	3,190,457.00	37	46	780,850.00	885,674.00	106,736.50	74,482,142.50	3.12
1/10/2009	54,250,945.00	1135 (\$2,N), 1136 (\$5,N) - 1/5/09	3,582,400.00	7	8	5,476,890.00	116,674.50	1,403,531.00	1,267,847.00	675	900	2,701,275.00	12	16	681,574.00	868,919.00	104,109.50	70,454,165.00	2.95
1/17/2009	51,625,339.00	1137 (\$1,N), 1138 (\$3,N) - 1/12/09	3,668,302.50	9	10	5,443,159.00	112,605.00	1,387,958.00	778,563.00	200	200	2,683,707.00	22	12	675,416.00	852,987.00	98,907.50	67,326,944.00	2.82
1/24/2009	52,789,573.00	1115 (\$2,N), 1116 (\$5,N) - 1/19/09	3,723,835.50	11	12	5,514,547.50	115,827.50	1,376,695.00	860,483.00	225	325	2,692,611.00	16	21	676,936.00	836,996.00	99,541.00	68,687,045.50	2.87
1/31/2009	55,453,471.00	1080 (\$1,N), 1024 (\$20,R) - 1/26/09; 1062 (\$5,N) - 1/28/09	3,837,299.00	13	14	5,700,714.50	121,794.50	1,403,756.00	1,070,879.00	450	600	3,002,883.00	30	40	731,253.00	925,937.50	113,755.50	72,361,743.00	3.03
2/7/2009	62,247,711.00	1035 (\$2,N), 1144 (\$5,N), 1058 (\$10, N) - 2/2/09	4,092,117.00	15	16	6,336,717.00	134,543.00	1,481,812.00	842,746.00	200	225	3,509,032.00	50	60	829,550.00	1,007,529.00	120,267.50	80,602,024.50	3.37
2/14/2009	60,509,056.00	1146 (\$7,N), 1089 (\$1,N) - 2/9/09	4,119,193.00	17	18	6,363,028.00	133,901.50	1,445,616.00	1,013,987.00	325	450	4,082,572.00	73	85	928,813.00	1,010,898.50	120,068.50	79,727,133.50	3.34
2/21/2009	59,194,623.00	1046 (\$2,N), 1140 (\$5,N) - 2/16/09	4,326,401.00	19	20	6,038,807.50	128,493.00	1,439,312.00	1,268,803.00	600	750	5,614,471.00	103	120	1,178,133.00	988,075.00	115,703.50	80,292,822.00	3.36
2/28/2009	58,857,216.00	1132 (\$10,N), 1149 (\$1,N) - 2/23/09	4,526,304.00	21	22	6,084,457.50	128,979.50	1,439,607.00	1,668,414.00	925	1,150	7,676,975.00	145	171	1,504,895.00	973,121.00	114,171.00	82,974,140.00	3.47

Texas Lottery Commission - Weekly Sales Summary for FY 2009 (Unaudited)

Week Ended	Instant Games	New Games & Dates	Lotto Texas	Jackpot		Pick 3	Pick 3 Sum It Up	Cash 5	Texas Two Step	Jackpot		Mega Millions	Jackpot		Megaplier	Daily 4	Daily 4 Sum It Up	Total	Per Cap.
				W	S					M/T	TH/F		T	F					
3/7/2009	59,552,257.00	0	4,928,440.00	23	25	6,133,789.00	128,599.00	1,487,185.00	1,984,358.00	1,350	1,600	6,898,457.00	212	12	1,349,427.00	971,644.50	113,236.00	83,547,392.50	3.50
3/14/2009	53,754,084.00	1139 (\$2.N), 1079 (\$5.N) - 3/09/09	4,752,592.00	26	28	5,850,166.00	120,684.50	1,418,127.00	2,112,571.00	1,900	2,150	2,782,204.00	16	26	698,214.00	925,615.00	109,657.50	72,523,915.00	3.03
3/21/2009	52,581,107.00	1107 (\$1.N), 1154 (\$3.N), 1057 (\$10.N) - 3/16/09; 1102 (\$2.N) - 3/19/09	3,437,818.00	4	5	5,776,041.50	117,294.00	1,399,720.00	880,620.00	200	225	2,595,785.00	12	16	653,517.00	934,185.00	108,057.50	68,484,145.00	2.87
3/28/2009	52,560,961.00	1130 (\$5.N), 1150 (\$10.N) - 3/23/09	3,486,731.00	6	7	5,633,454.50	114,269.50	1,381,550.00	901,673.00	300	200	2,845,499.00	24	34	701,971.00	925,093.50	104,691.50	68,655,894.00	2.87
4/4/2009	56,249,759.00	1151 (\$2.N), 1101 (\$50.N) - 3/30/09	3,746,083.00	8	9	5,893,043.50	122,332.00	1,429,598.00	940,614.00	225	300	3,321,274.00	43	54	794,282.00	998,042.00	111,733.50	73,606,761.00	3.08
4/11/2009	54,440,987.00	1153 (\$2.N) - 4/07/09; 1152 (\$3.N) - 4/08/09	3,594,176.00	10	4	5,893,551.00	120,491.50	1,394,879.00	933,807.00	425	200	3,772,700.00	65	78	857,890.00	987,127.50	105,977.50	72,101,586.50	3.02
4/18/2009	52,755,834.00	1145 (\$1.N), 1148 (\$5.N) - 4/13/09	3,462,217.00	5	6	5,627,572.00	117,123.50	1,374,682.00	829,493.00	225	200	4,960,982.00	92	109	1,040,136.00	957,161.00	100,218.50	71,225,419.00	2.98
4/25/2009	51,450,968.00	1051 (\$7.N) - 4/20/09	3,517,624.00	7	8	5,408,672.50	117,314.50	1,347,754.00	876,206.00	225	300	6,614,120.95	130	155	1,298,021.00	937,777.00	99,408.50	71,667,866.45	3.00
5/2/2009	52,327,090.00	1161 (\$1.N), 1081 (\$5.N) - 4/27/09	3,679,438.00	9	10	5,512,770.50	113,755.50	1,362,174.00	880,888.00	425	200	9,277,686.00	181	225	1,653,107.00	937,874.00	102,880.00	75,847,663.00	3.17
5/9/2009	53,214,412.00	0	3,554,635.00	11	4	5,603,106.00	118,185.50	1,389,454.00	823,436.00	225	200	2,961,748.00	12	17	718,169.00	967,592.00	104,881.00	69,455,618.50	2.91
5/16/2009	50,785,227.00	1131 (\$2.N), 1134 (\$5.N) - 5/11/09; 1165 (\$1.N), 1114 (\$20.N) - 5/18/09; 1156 (\$1.N) - 5/19/09; 1153 (\$2.N) - 5/20/09	3,332,475.00	5	6	5,417,197.00	112,501.00	1,356,843.00	842,436.00	225	275	3,116,696.00	28	38	748,141.00	959,922.50	104,332.00	66,775,770.50	2.79
5/23/2009	56,567,077.00		3,425,065.00	7	8	5,363,150.50	111,143.50	1,356,979.00	1,061,946.00	400	525	2,790,741.00	12	16	694,815.00	967,375.50	103,231.00	72,441,523.50	3.03
weekly change	11.38%		2.78%			-1.00%	-1.21%	0.01%	26.06%			-10.46%			-7.13%	0.78%	-1.06%	8.48%	
SALES																			
Startup to date	35,508,203,400.00		10,417,960,965.00			3,509,039,515.00	10,908,194.00	2,171,457,989.00	463,414,907.00			1,069,393,353.45			250,653,043.00	75,569,598.00	12,346,885.00	53,697,081,821.45	100.0%
Calendar Year to date	1,126,299,725.00		78,591,673.00			117,880,016.00	175,670.50	28,719,535.00	22,255,770.00			85,436,449.95			18,785,228.00	19,361,939.50	2,206,077.50	1,499,712,084.45	100.0%
Fiscal Year to date 2009	2,027,617,398.00		138,863,918.00			210,320,562.50	4,422,364.00	52,301,979.00	37,149,189.00			143,254,758.45			32,445,009.00	33,352,626.50	4,008,081.50	2,683,735,885.95	100.0%