



*WEEKLY SALES SUMMARY*

Unaudited

**Week Ending: 6/10/2017**

Texas Lottery Commission  
Fiscal Year to Date Sales Comparison  
Unaudited

Through the Week Ending 6/10/2017 (41 Weeks)

Sales by Game	FY 2015 *	FY 2016 **	FY 2017	\$ Change		% Change	
				FY 2017 to FY 2015	FY 2017 to FY 2016	FY 2017 to FY 2015	FY 2017 to FY 2016
Scratch Tickets	\$ 2,757,325,148	\$ 2,926,711,574	\$ 3,078,116,780	\$ 320,791,632	\$ 151,405,206	11.6%	5.2%
Lotto Texas	95,828,860	96,465,873	88,607,085	-7,221,775	-7,858,788	-7.5%	-8.1%
Lotto Extra	15,012,088	17,007,663	17,432,210	2,420,122	424,547	16.1%	2.5%
Pick 3	199,766,094	201,185,800	196,114,791	-3,651,303	-5,071,010	-1.8%	-2.5%
Pick 3 Sum It Up	4,089,865	4,141,106	3,747,595	-342,270	-393,512	-8.4%	-9.5%
Cash Five	39,729,221	36,384,181	34,264,385	-5,464,836	-2,119,796	-13.8%	-5.8%
Texas Two Step	42,866,826	43,035,823	42,652,732	-214,094	-383,091	-0.5%	-0.9%
Mega Millions	123,207,146	104,414,525	87,057,181	-36,149,965	-17,357,344	-29.3%	-16.6%
Megaplier	28,750,120	26,467,000	23,826,441	-4,923,679	-2,640,559	-17.1%	-10.0%
Daily 4	68,639,889	71,190,313	74,474,470	5,834,581	3,284,157	8.5%	4.6%
Daily 4 Sum It Up	3,995,844	3,798,981	3,997,578	1,734	198,597	0.0%	5.2%
Powerball	172,264,989	387,047,615	191,966,067	19,701,078	-195,081,548	11.4%	-50.4%
Power Play	21,586,048	43,690,938	26,954,025	5,367,977	-16,736,913	24.9%	-38.3%
All or Nothing	30,332,646	24,287,940	22,663,806	-7,668,840	-1,624,134	-25.3%	-6.7%
Monopoly	1 2,656,370	-	-	-2,656,370	-	-100.0%	-
Texas Triple Chance	-	19,623,190	11,583,930	11,583,930	-8,039,260	-	-41.0%
<b>Total</b>	<b>\$ 3,606,051,153</b>	<b>\$ 4,005,452,522</b>	<b>\$ 3,903,459,075</b>	<b>\$ 297,407,922</b>	<b>\$ -101,993,447</b>	<b>8.2%</b>	<b>-2.5%</b>

\* 3 extra days

\*\* 2 extra days

1 Monopoly sales were suspended after draw on 12/12/14

Texas Lottery Commission  
Fiscal Year to Date Cumulative Average Sales Comparison  
Unaudited

Through the Week Ending 6/10/2017 (41 Weeks)

Sales by Game	FY 2015	FY 2016	FY 2017
Scratch Tickets	\$ 9,640,997	\$ 10,269,163	\$ 10,876,738
Lotto Texas	335,066	338,477	313,099
Lotto Extra	52,490	59,676	61,598
Pick 3	698,483	705,915	692,985
Pick 3 Sum It Up	14,300	14,530	13,242
Cash Five	138,913	127,664	121,076
Texas Two Step	149,884	151,003	150,716
Mega Millions	430,794	366,367	307,623
Megaplier	100,525	92,867	84,192
Daily 4	240,000	249,791	263,161
Daily 4 Sum It Up	13,971	13,330	14,126
Powerball	602,325	1,358,062	678,325
Power Play	75,476	153,302	95,244
All or Nothing	106,058	85,221	80,084
Monopoly	** 48,298	-	-
Texas Triple Chance	- *	75,765	40,933
<b>Total</b>	<b>\$ 12,647,580</b>	<b>\$ 14,061,131</b>	<b>\$ 13,793,142</b>

thru 6/13/2015

286 days

\*\*

55 days

thru 6/11/2016

285 days

\*

259 days

thru 6/10/2017

283 days

Texas Lottery Commission  
Fiscal Year Over Year Change in Sales  
Unaudited  
FY 2017 Compared to FY 2016

			SCRATCH TICKETS				DRAW GAMES				TOTAL SALES			
FY 2017			FY 2017	FY 2016	Difference	% change - Cumulative Sales	FY 2017	FY 2016	Difference	% change - Cumulative Sales	FY 2017	FY 2016	Difference	% change - Cumulative Sales
Week	Week Ending													
1	9/3/2016 *		\$32,980,266	\$49,534,249	(\$16,553,983)	-33.4%	\$10,218,656	\$17,091,724	(\$6,873,068)	-40.2%	\$43,198,922	\$66,625,973	(\$23,427,051)	-35.2%
2	9/10/2016		\$65,952,418	\$61,566,291	\$4,386,127	7.1%	\$19,635,377	\$20,630,922	(\$995,545)	-4.8%	\$85,587,795	\$82,197,213	\$3,390,583	4.1%
3	9/17/2016		\$66,196,270	\$63,530,657	\$2,665,613	4.2%	\$20,915,290	\$20,327,253	\$588,037	2.9%	\$87,111,560	\$83,857,910	\$3,253,650	3.9%
4	9/24/2016		\$64,383,005	\$61,731,400	\$2,651,605	4.3%	\$17,451,165	\$22,252,290	(\$4,801,125)	-21.6%	\$81,834,170	\$83,983,690	(\$2,149,520)	-2.6%
5	10/1/2016		\$67,349,951	\$67,048,415	\$301,536	0.4%	\$17,519,852	\$25,436,791	(\$7,916,939)	-31.1%	\$84,869,803	\$92,485,206	(\$7,615,403)	-8.2%
6	10/8/2016		\$71,598,690	\$66,049,706	\$5,548,984	8.4%	\$18,211,107	\$18,138,977	\$72,130	0.4%	\$89,809,797	\$84,188,683	\$5,621,114	6.7%
7	10/15/2016		\$69,444,762	\$65,073,593	\$4,371,169	6.7%	\$18,075,261	\$17,776,414	\$298,847	1.7%	\$87,520,023	\$82,850,007	\$4,670,016	5.6%
8	10/22/2016		\$69,317,066	\$64,087,437	\$5,229,629	8.2%	\$18,422,336	\$18,450,464	(\$28,128)	-0.2%	\$87,739,402	\$82,537,901	\$5,201,501	6.3%
9	10/29/2016		\$69,729,599	\$66,025,374	\$3,704,225	5.6%	\$18,535,248	\$19,568,150	(\$1,032,902)	-5.3%	\$88,264,847	\$85,593,524	\$2,671,324	3.1%
10	11/5/2016		\$73,451,702	\$68,137,192	\$5,314,510	7.8%	\$20,151,939	\$20,398,351	(\$246,413)	-1.2%	\$93,603,641	\$88,535,543	\$5,068,098	5.7%
11	11/12/2016		\$70,998,320	\$65,449,428	\$5,548,892	8.5%	\$19,925,460	\$20,169,382	(\$243,923)	-1.2%	\$90,923,780	\$85,618,810	\$5,304,970	6.2%
12	11/19/2016		\$75,265,196	\$68,364,421	\$6,900,775	10.1%	\$21,424,637	\$17,174,606	\$4,250,031	24.7%	\$96,689,833	\$85,539,027	\$11,150,806	13.0%
13	11/26/2016		\$68,983,157	\$61,091,628	\$7,891,529	12.9%	\$24,223,331	\$17,168,993	\$7,054,338	41.1%	\$93,206,488	\$78,260,621	\$14,945,867	19.1%
14	12/3/2016		\$72,688,514	\$67,830,827	\$4,857,687	7.2%	\$17,653,328	\$19,252,418	(\$1,599,090)	-8.3%	\$90,341,842	\$87,083,245	\$3,258,597	3.7%
15	12/10/2016		\$71,676,549	\$68,324,452	\$3,352,097	4.9%	\$18,150,590	\$19,529,408	(\$1,378,819)	-7.1%	\$89,827,139	\$87,853,860	\$1,973,279	2.2%
16	12/17/2016		\$73,909,726	\$71,041,258	\$2,868,468	4.0%	\$19,814,333	\$20,824,840	(\$1,010,507)	-4.9%	\$93,724,059	\$91,866,098	\$1,857,962	2.0%
17	12/24/2016		\$77,369,179	\$78,125,965	(\$756,786)	-1.0%	\$19,276,415	\$22,586,417	(\$3,310,002)	-14.7%	\$96,645,594	\$100,712,382	(\$4,066,788)	-4.0%
18	12/31/2016		\$80,868,854	\$76,712,975	\$4,155,879	5.4%	\$19,289,161	\$27,972,880	(\$8,683,720)	-31.0%	\$100,158,015	\$104,685,855	(\$4,527,841)	-4.3%
19	1/7/2017		\$73,328,624	\$77,136,541	(\$3,807,917)	-4.9%	\$18,611,644	\$127,289,478	(\$108,677,835)	-85.4%	\$91,940,268	\$204,426,019	(\$112,485,752)	-55.0%
20	1/14/2017		\$73,471,643	\$73,858,865	(\$387,222)	-0.5%	\$20,351,397	\$140,104,126	(\$119,752,729)	-85.5%	\$93,823,040	\$213,962,991	(\$120,139,951)	-56.1%
21	1/21/2017		\$72,229,342	\$70,665,700	\$1,563,642	2.2%	\$20,349,310	\$20,781,745	(\$432,435)	-2.1%	\$92,578,652	\$91,447,445	\$1,131,208	1.2%
22	1/28/2017		\$72,056,793	\$71,051,685	\$1,005,108	1.4%	\$21,668,657	\$20,433,401	\$1,235,257	6.0%	\$93,725,450	\$91,485,086	\$2,240,365	2.4%
23	2/4/2017		\$77,292,806	\$78,458,428	(\$1,165,622)	-1.5%	\$22,161,789	\$21,274,800	\$886,989	4.2%	\$99,454,595	\$99,733,228	(\$278,634)	-0.3%
24	2/11/2017		\$78,699,192	\$80,754,850	(\$2,055,658)	-2.5%	\$22,100,245	\$21,391,919	\$708,326	3.3%	\$100,799,437	\$102,146,769	(\$1,347,332)	-1.3%
25	2/18/2017		\$77,864,124	\$80,078,271	(\$2,214,147)	-2.8%	\$24,776,465	\$21,911,382	\$2,865,083	13.1%	\$102,640,589	\$101,989,653	\$650,936	0.6%
26	2/25/2017		\$80,287,015	\$78,832,217	\$1,454,798	1.8%	\$28,133,116	\$22,823,086	\$5,310,031	23.3%	\$108,420,131	\$101,655,303	\$6,764,829	6.7%
27	3/4/2017		\$87,500,184	\$80,019,524	\$7,480,660	9.3%	\$20,213,859	\$23,146,906	(\$2,933,047)	-12.7%	\$107,714,043	\$103,166,430	\$4,547,613	4.4%
28	3/11/2017		\$84,966,053	\$78,524,214	\$6,441,839	8.2%	\$21,024,757	\$19,311,625	\$1,713,132	8.9%	\$105,990,810	\$97,835,839	\$8,154,971	8.3%
29	3/18/2017		\$82,972,977	\$75,446,960	\$7,526,017	10.0%	\$20,434,291	\$18,001,000	\$2,433,292	13.5%	\$103,407,268	\$93,447,960	\$9,959,309	10.7%
30	3/25/2017		\$82,217,628	\$75,293,759	\$6,923,869	9.2%	\$20,282,992	\$18,553,964	\$1,729,028	9.3%	\$102,500,620	\$93,847,723	\$8,652,897	9.2%
31	4/1/2017		\$86,271,920	\$79,316,221	\$6,955,699	8.8%	\$19,497,142	\$19,482,563	\$14,580	0.1%	\$105,769,062	\$98,798,784	\$6,970,279	7.1%
32	4/8/2017		\$81,499,404	\$74,560,898	\$6,938,506	9.3%	\$17,854,294	\$20,100,629	(\$2,246,336)	-11.2%	\$99,353,698	\$94,661,527	\$4,692,171	5.0%
33	4/15/2017		\$81,831,134	\$74,056,586	\$7,774,548	10.5%	\$17,865,636	\$20,677,413	(\$2,811,777)	-13.6%	\$99,696,770	\$94,733,999	\$4,962,771	5.2%
34	4/22/2017		\$80,531,863	\$73,110,080	\$7,421,783	10.2%	\$18,337,257	\$20,313,339	(\$1,976,082)	-9.7%	\$98,869,120	\$93,423,419	\$5,445,702	5.8%
35	4/29/2017		\$81,433,819	\$73,448,019	\$7,985,800	10.9%	\$18,956,981	\$22,666,626	(\$3,709,646)	-16.4%	\$100,390,800	\$96,114,645	\$4,276,155	4.4%
36	5/6/2017		\$84,857,262	\$77,593,399	\$7,263,863	9.4%	\$19,489,624	\$33,262,968	(\$13,773,344)	-41.4%	\$104,346,886	\$110,856,367	(\$6,509,481)	-5.9%
37	5/13/2017		\$81,090,824	\$75,263,676	\$5,827,148	7.7%	\$19,420,237	\$20,250,149	(\$829,912)	-4.1%	\$100,511,061	\$95,513,825	\$4,997,236	5.2%
38	5/20/2017		\$80,557,866	\$74,274,808	\$6,283,058	8.5%	\$20,939,291	\$19,605,983	\$1,333,308	6.8%	\$101,497,157	\$93,880,791	\$7,616,366	8.1%
39	5/27/2017		\$78,141,293	\$71,562,728	\$6,578,565	9.2%	\$21,072,651	\$20,150,232	\$922,420	4.6%	\$99,213,944	\$91,712,960	\$7,500,985	8.2%
40	6/3/2017		\$78,991,820	\$73,085,109	\$5,906,711	8.1%	\$23,569,252	\$21,067,550	\$2,501,703	11.9%	\$102,561,072	\$94,152,659	\$8,408,414	8.9%
41	6/10/2017		\$77,859,970	\$70,593,768	\$7,266,202	10.3%	\$29,337,930	\$21,389,794	\$7,948,137	37.2%	\$107,197,900	\$91,983,562	\$15,214,339	16.5%
42	6/17/2017			\$69,501,864				\$22,402,713				\$91,904,577		

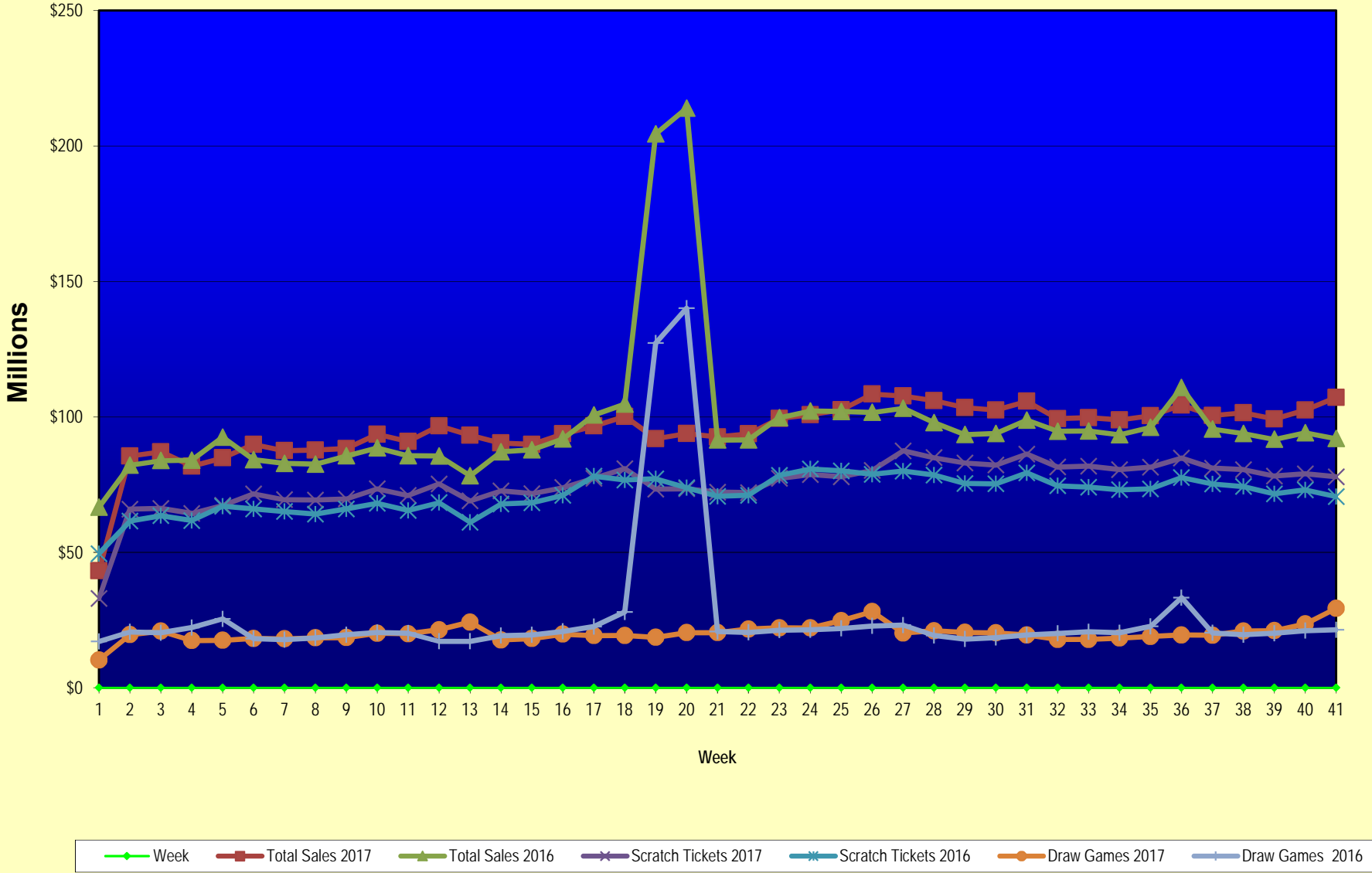
Texas Lottery Commission  
Fiscal Year Over Year Change in Sales  
Unaudited  
FY 2017 Compared to FY 2016

			SCRATCH TICKETS				DRAW GAMES				TOTAL SALES			
FY 2017			FY 2017	FY 2016	Difference	% change - Cumulative Sales	FY 2017	FY 2016	Difference	% change - Cumulative Sales	FY 2017	FY 2016	Difference	% change - Cumulative Sales
Week	Week	Ending												
43	6/24/2017			\$69,243,660				\$24,290,311				\$93,533,971		
44	7/1/2017			\$70,782,313				\$29,331,406				\$100,113,719		
45	7/8/2017			\$67,636,625				\$38,673,314				\$106,309,939		
46	7/15/2017			\$68,064,720				\$21,311,938				\$89,376,658		
47	7/22/2017			\$69,509,821				\$21,982,689				\$91,492,510		
48	7/29/2017			\$64,486,970				\$30,699,953				\$95,186,923		
49	8/5/2017			\$69,206,183				\$18,277,075				\$87,483,258		
50	8/12/2017			\$67,165,060				\$18,101,640				\$85,266,700		
51	8/19/2017			\$69,067,938				\$18,981,681				\$88,049,619		
52	8/26/2017			\$67,821,162				\$19,606,571				\$87,427,733		
	8/31/2017 **			\$36,609,542				\$9,310,254				\$45,919,796		
Total thru Current Week			\$3,078,116,780	\$2,926,711,574	\$151,405,206	5.2%	\$825,342,295	\$1,078,740,948	(\$253,398,653)	-23.5%	\$3,903,459,075	\$4,005,452,522	(\$101,993,447)	-2.5%
Fiscal Year Total			\$3,078,116,780	\$3,715,807,432			\$825,342,295	\$1,351,710,491			\$3,903,459,075	\$5,067,517,923		

\* FY 17 includes 3 days; FY 16 includes 5 days

\*\* FY 17 includes 5 days; FY 16 includes 4 days

### Texas Lottery Commission Fiscal Year Over Year Change in Sales



Note: Week 1 is not a full week of sales as this report is prepared on a Fiscal Year basis.

Texas Lottery Commission  
Scratch Tickets by Price Point  
Sales, Prize Expense, Sales Contribution and Payout Percentage With Year Over Year Changes  
Unaudited

Fiscal Year	Price Point	# of Active Games	FY Sales	% of Scratch Ticket Sales	Year over Year Change in Sales	FY Prize Expense	Year over Year Change in Prize Expense	FY Sales Contribution	Year over Year Change in Contribution	Average Prize Payout %	Year over Year Change in Payout %
2016	\$1.00	20	128,188,906	4.4%		77,278,695		50,910,211		60.3%	-0.4%
Through	\$2.00	33	290,354,316	9.9%		189,284,265		101,070,051		65.2%	-0.5%
6/11/2016	\$3.00	13	219,218,967	7.5%		144,408,991		74,809,976		65.9%	-0.1%
	\$5.00	56	964,023,965	32.9%		654,966,236		309,057,729		67.9%	0.0%
	\$10.00	18	586,198,700	20.0%		410,890,938		175,307,762		70.1%	-0.2%
	\$20.00	13	590,373,220	20.2%		442,432,022		147,941,198		74.9%	0.0%
	\$50.00	4	148,353,500	5.1%		115,395,921		32,957,579		77.8%	0.1%
<b>Total</b>		<b>157</b>	<b>\$2,926,711,574</b>			<b>\$2,034,657,067</b>		<b>\$892,054,507</b>		<b>69.5%</b>	<b>0.1%</b>
2017	\$1.00	23	116,929,118	3.8%		70,507,090		46,422,028		60.3%	0.1%
Through	\$2.00	29	258,067,178	8.4%		168,152,691		89,914,487		65.2%	0.0%
6/10/2017	\$3.00	13	210,658,119	6.8%		138,901,178		71,756,941		65.9%	0.1%
	\$5.00	56	967,945,455	31.4%		657,800,486		310,144,969		68.0%	0.0%
	\$10.00	21	706,671,400	23.0%		497,015,057		209,656,343		70.3%	0.2%
	\$20.00	14	647,280,660	21.0%		485,021,402		162,259,258		74.9%	0.0%
	\$50.00	5	170,564,850	5.5%		132,803,391		37,761,459		77.9%	0.1%
<b>Total</b>		<b>161</b>	<b>\$3,078,116,780</b>			<b>\$2,150,201,295</b>		<b>\$927,915,485</b>		<b>69.9%</b>	<b>0.4%</b>
Variance	\$1.00	3	-11,259,788		-8.8%	-6,771,605	-8.8%	-4,488,183	-8.8%	0.01%	
2017 to	\$2.00	-4	-32,287,138		-11.1%	-21,131,574	-11.2%	-11,155,564	-11.0%	-0.03%	
2016	\$3.00	0	-8,560,848		-3.9%	-5,507,812	-3.8%	-3,053,036	-4.1%	0.06%	
	\$5.00	0	3,921,490		0.4%	2,834,251	0.4%	1,087,239	0.4%	0.02%	
	\$10.00	3	120,472,700		20.6%	86,124,119	21.0%	34,348,581	19.6%	0.24%	
	\$20.00	1	56,907,440		9.6%	42,589,379	9.6%	14,318,061	9.7%	-0.01%	
	\$50.00	1	22,211,350		15.0%	17,407,470	15.1%	4,803,880	14.6%	0.08%	
<b>Total</b>		<b>4</b>	<b>\$151,405,206</b>		<b>5.2%</b>	<b>\$115,544,228</b>	<b>5.7%</b>	<b>\$35,860,978</b>	<b>4.0%</b>	<b>0.33%</b>	

Notes - Scratch Ticket Variances

Texas Lottery Commission  
Scratch Tickets by Price Point  
Sales, Prize Expense, Sales Contribution and Payout Percentage With Year Over Year Changes  
Unaudited

		FY 2017	FY 2016	Difference
Sales	\$1 - \$5	\$1,553,599,870	\$1,601,786,154	-\$48,186,284
Prize Exp.	\$1 - \$5	\$1,035,361,446	\$1,065,938,186	-\$30,576,741
Sales Cont.	\$1 - \$5	\$518,238,424	\$535,847,968	-\$17,609,543
Prize Exp. %	\$1 - \$5	66.6%	66.5%	0.1%
		FY 2017	FY 2016	Difference
Sales	\$10 - \$50	\$1,524,516,910	\$1,324,925,420	\$199,591,490
Prize Exp.	\$10 - \$50	\$1,114,839,849	\$968,718,881	\$146,120,968
Sales Cont.	\$10 - \$50	\$409,677,061	\$356,206,539	\$53,470,522
Prize Exp. %	\$10 - \$50	73.1%	73.1%	0.0%
		FY 2017	FY 2016	Difference
Sales	Scratch	\$3,078,116,780	\$2,926,711,574	\$151,405,206
Prize Exp.	Scratch	\$2,150,201,295	\$2,034,657,067	\$115,544,228
Sales Cont.	Scratch	\$927,915,485	\$892,054,507	\$35,860,978
Prize Exp. %	Scratch	69.9%	69.5%	0.3%

		FY 2017	FY 2016	Difference
Sales	\$1 - \$10	\$2,260,271,270	\$2,187,984,854	\$72,286,416
Prize Exp.	\$1 - \$10	\$1,532,376,502	\$1,476,829,124	\$55,547,378
Sales Cont.	\$1 - \$10	\$727,894,768	\$711,155,730	\$16,739,038
Prize Exp. %	\$1 - \$10	67.8%	67.5%	0.3%
		FY 2017	FY 2016	Difference
Sales	\$20 - \$50	\$817,845,510	\$738,726,720	\$79,118,790
Prize Exp.	\$20 - \$50	\$617,824,792	\$557,827,943	\$59,996,849
Sales Cont.	\$20 - \$50	\$200,020,718	\$180,898,777	\$19,121,941
Prize Exp. %	\$20 - \$50	75.5%	75.5%	0.0%
		FY 2017	FY 2016	Difference
Sales	Scratch	\$3,078,116,780	\$2,926,711,574	\$151,405,206
Prize Exp.	Scratch	\$2,150,201,295	\$2,034,657,067	\$115,544,228
Sales Cont.	Scratch	\$927,915,485	\$892,054,507	\$35,860,978
Prize Exp. %	Scratch	69.9%	69.5%	0.3%



Texas Lottery Commission  
 Weekly Sales Summary  
 & Comparison to Previous Week  
 Unaudited

	Week Ending 6/10/2017		Week Ending 6/03/2017			
	<u>THIS WEEK</u>	% of Sales	<u>LAST WEEK</u>	% of Sales	<u>\$ change</u>	<u>% change</u>
Total Sales	<u>\$107,197,900</u>		<u>\$102,561,072</u>		<u>\$4,636,828</u>	4.52%
Scratch Tickets	<u>\$77,859,970</u>	72.6%	<u>\$78,991,820</u>	77.0%	<u>-\$1,131,850</u>	-1.43%
Lotto	\$2,239,442	2.1%	\$2,132,197	2.1%	\$107,245	5.03%
Lotto Extra	\$461,804	0.4%	\$439,097	0.4%	\$22,707	5.17%
Pick 3	\$4,848,985	4.5%	\$4,810,333	4.7%	\$38,653	0.80%
Pick 3 Sum It Up	\$95,940	0.1%	\$92,930	0.1%	\$3,010	3.24%
Cash Five	\$829,415	0.8%	\$816,900	0.8%	\$12,515	1.53%
Texas Two Step	\$915,603	0.9%	\$869,598	0.8%	\$46,005	5.29%
Mega Millions	\$2,311,680	2.2%	\$2,003,278	2.0%	\$308,402	15.39%
Megaplier	\$645,564	0.6%	\$575,688	0.6%	\$69,876	12.14%
Daily 4	\$1,938,236	1.8%	\$1,898,849	1.9%	\$39,387	2.07%
Daily 4 Sum It Up	\$102,285	0.1%	\$99,557	0.1%	\$2,728	2.74%
Powerball	\$12,531,426	11.7%	\$7,941,590	7.7%	\$4,589,836	57.79%
Power Play	\$1,587,871	1.5%	\$1,061,768	1.0%	\$526,103	49.55%
All or Nothing	\$567,014	0.5%	\$566,878	0.6%	\$136	0.02%
Texas Triple Chance	\$262,666	0.2%	\$260,590	0.3%	\$2,076	0.80%
Total Draw Game Sales	<u>\$29,337,930</u>		<u>\$23,569,252</u>		<u>\$5,768,678</u>	24.48%

\* Totals may not sum due to rounding.

Texas Lottery Commission  
Weekly Sales Summary  
Unaudited

SCRATCH TICKETS  
TOP TEN SELLING GAMES

For the week ending: 6/10/2017

Rank	Price Point	Game	Sales (Millions)
1	\$ 20	INSTANT MILLIONAIRE	\$ 4.276
2	\$ 10	MEGA LOTERIA	\$ 3.973
3	\$ 50	ULTIMATE MILLIONS	\$ 3.796
4	\$ 10	50X SUPER TICKET	\$ 3.748
5	\$ 5	SUPER LOTERIA	\$ 3.354
6	\$ 20	100X THE CASH	\$ 3.241
7	\$ 10	CASHWORD MULTIPLIER	\$ 3.219
8	\$ 10	WILLY WONKA GOLDEN TICKET	\$ 3.082
9	\$ 20	MONEY	\$ 2.811
10	\$ 5	\$10, \$20 OR \$50!	\$ 2.753

Texas Lottery Commission  
Prize Payout Tracking Report  
Unaudited

Through the week ending: 6/10/2017

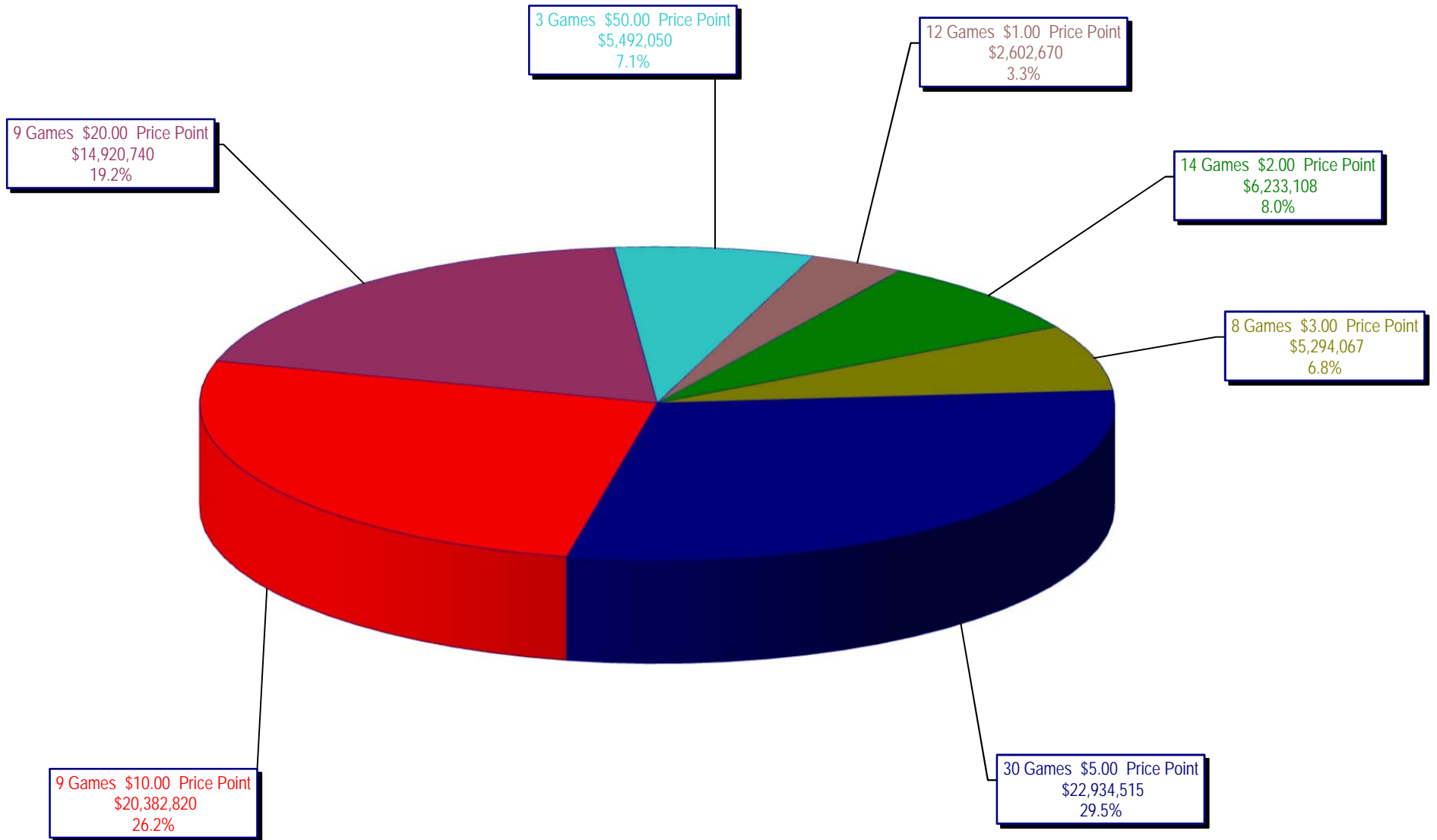
Draw Game Sales

		FY Sales Through Week Ending 6/10/2017		FY Prize Expense Through Week Ending 6/10/2017	Actual* Prize Payout	Base Payout (Prize Pool)
Lotto	\$	88,607,085	\$	44,404,883	50.11%	50.00%
Lotto Extra		17,432,210		9,201,698	52.79%	53.70%
Pick 3		196,114,791		95,310,210	48.60%	50.00%
Pick 3 Sum It Up		3,747,595		1,664,090	44.40%	50.00%
Cash Five		34,264,385		17,132,193	50.00%	50.00%
Texas Two Step		42,652,732		21,665,711	50.80%	50.00%
Mega Millions		87,057,181		44,388,528	50.99%	50.00%**
Megaplier		23,826,441		11,907,817	49.98%	N/A
Daily 4		74,474,470		41,467,250	55.68%	50.00%
Daily 4 Sum It Up		3,997,578		3,197,331	79.98%	50.00%
Powerball		191,966,067		95,957,769	49.99%	50.00%**
Power Play		26,954,025		13,473,927	49.99%	N/A
All or Nothing		22,663,806		12,604,182	55.61%	55.98%
Texas Triple Chance		11,583,930		6,375,808	55.04%	54.42%
<b>Totals</b>	\$	<b>825,342,295</b>	\$	<b>418,751,396</b>	<b>50.74%</b>	

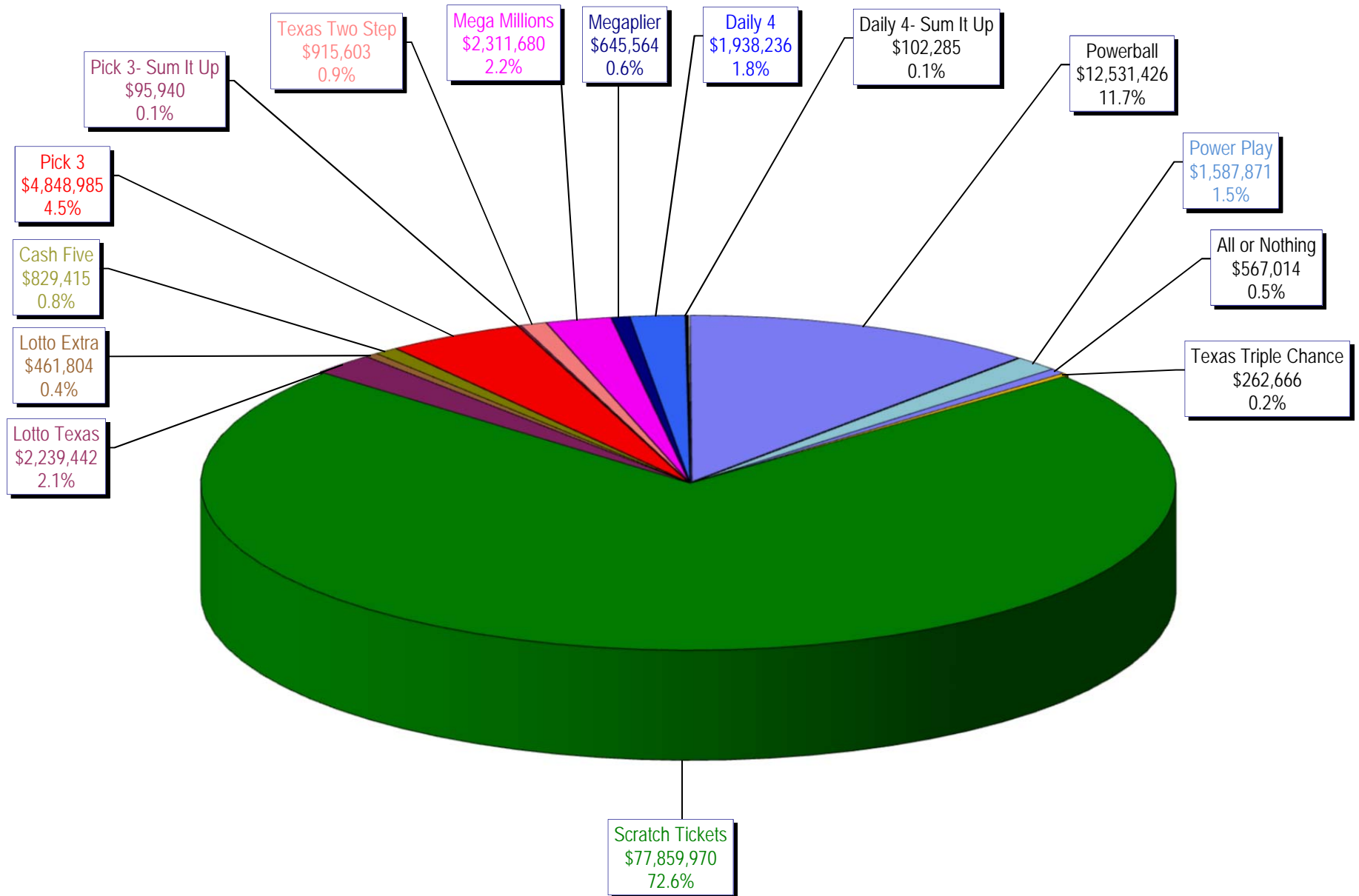
\* Before Unclaimed Prizes

\*\*Estimated; depends on # of guaranteed prizes won in Texas

Texas Lottery Commission  
Scratch Ticket Sales  
For the week ending 6/10/2017  
(Unaudited)



**Texas Lottery Commission**  
**All Game Sales**  
For the week ending 6/10/2017  
(Unaudited)



Texas Lottery Commission - Weekly Sales Summary for FY 2017 (Unaudited)

Week Ended	Scratch Tickets	New Games & Dates	Lotto Texas	Jackpot W S	Lotto Extra	Pick 3	Pick 3 Sum It Up	Cash Five	Texas Two Step	Jackpot M TH	Mega Millions	Jackpot T F	Megaplier	Daily 4	Daily 4 Sum It Up	Powerball	Jackpot W S	Power Play	All or Nothing	Texas Triple Chance	Total	Per Cap.
9/3/2016*	69,589,808	0	2,106,552	8.75 9.25	402,665	4,798,985	92,214	843,135	810,947	200 200	2,331,141	84 92	631,299	1,788,614	96,398	4,189,234	154 170	603,430	528,102	306,194	89,118,717	3.24
9/10/2016	65,952,418	1810 (\$1.N); 1809 (\$1.N); 1811 (\$5.N) - 9/06/16	2,095,828	9.75 10.25	399,944	4,590,651	86,697	818,614	862,148	225 275	2,490,552	101 111	655,066	1,647,119	87,455	4,473,836	186 205	628,810	506,718	291,940	85,587,795	3.12
9/17/2016	66,196,270	0	2,127,440	11 11.75	405,936	4,553,039	86,110	822,240	1,180,444	400 550	2,661,252	122 133	692,583	1,705,629	91,610	5,096,928	222 244	696,626	503,466	291,988	87,111,560	3.17
9/24/2016	64,383,005	1793 (\$2.N); 1782 (\$5.N); 1781 (\$10.N) - 9/19/16	2,141,721	12.25 13	404,127	4,551,066	83,958	811,604	1,465,789	700 900	1,733,288	15 20	489,347	1,680,793	90,386	2,790,676	40 50	429,512	503,041	275,858	81,834,170	2.98
10/1/2016	67,349,951	0	2,203,652	13.25 14	414,603	4,642,047	91,016	857,979	816,836	200 225	1,840,801	25 30	515,384	1,688,464	88,184	2,960,772	60 70	455,619	589,964	354,532	84,869,803	3.09
10/8/2016	71,598,690	1772 (\$1.N); 1770 (\$2.N); 1813 (\$5.N); 1779 (\$20.N) - 10/03/16	2,211,941	14.5 15.5	419,062	4,900,537	94,965	867,520	849,234	200 225	1,925,289	35 41	540,723	1,780,544	92,908	3,109,092	80 91	471,027	611,898	336,368	89,809,797	3.27
10/15/2016	69,444,762	0	2,207,002	16 16.75	416,802	4,549,017	89,171	836,548	1,024,493	300 425	1,780,458	49 15	496,567	1,679,519	87,007	3,499,528	107 122	510,617	577,343	321,190	87,520,023	3.19
10/22/2016	69,317,066	1814 (\$3.N); 1815 (\$5.N); 1832 (\$50.N) - 10/17/16	2,222,089	17 18	420,632	4,457,898	84,115	836,942	1,260,293	575 750	1,714,985	20 25	482,408	1,636,471	83,009	3,800,444	136 151	542,655	564,808	315,588	87,739,402	3.19
10/29/2016	69,729,599	0	2,269,908	18.5 19.25	430,487	4,511,234	86,114	833,125	779,029	200 200	1,781,093	30 35	500,203	1,711,520	88,083	4,097,116	164 180	575,614	565,102	306,622	88,264,847	3.21
11/5/2016	73,451,702	0	2,168,782	20 5	414,167	4,996,360	97,149	859,798	796,978	200 200	1,904,765	40 47	534,014	1,913,301	100,223	4,796,408	198 217	660,205	591,246	318,544	93,603,641	3.41
11/12/2016	70,998,320	1816 (\$2.N); 1808 (\$5.N); 1817 (\$5.N); 1818 (\$10.N) - 11/07/16	1,893,513	5.25 5.5	368,470	4,642,196	89,581	833,195	869,408	225 275	1,964,313	54 65	541,639	1,741,306	90,176	5,313,351	236 258	715,597	563,280	299,436	90,923,780	3.31
11/19/2016	75,265,196	1819 (\$1.N); 1820 (\$5.N); 1869 (\$10.N) - 11/16/16	1,924,291	5.75 6	376,977	4,595,331	87,939	830,211	1,078,765	400 550	2,072,033	73 82	567,597	1,715,227	91,335	6,391,094	293 320	836,372	557,058	300,408	96,689,833	3.52
11/26/2016	68,983,157	0	1,945,264	6.25 6.5	383,703	4,472,018	83,761	795,696	737,931	200 225	1,698,370	15 20	487,160	1,649,794	84,195	9,839,524	359 403	1,235,062	527,328	283,526	93,206,488	3.39
12/3/2016	72,688,514	0	1,989,472	6.75 7	386,573	4,901,443	91,365	857,900	1,002,319	275 375	1,761,923	25 30	499,193	1,823,528	94,278	2,932,322	40 54	444,551	569,036	299,426	90,341,842	3.29
12/10/2016	71,676,549	1807 (\$5.N); 1866 (\$10.N); 1822 (\$20.N) - 12/05/16	2,006,953	7.25 7.5	388,230	4,748,391	88,668	849,940	1,337,879	525 700	1,830,451	35 43	505,981	1,812,622	88,690	3,176,570	67 85	475,269	551,930	289,016	89,827,139	3.27
12/17/2016	73,909,726	0	2,048,592	7.75 8	398,632	4,778,144	88,676	854,061	1,906,792	900 1,125	1,966,377	51 59	539,946	1,844,818	94,354	3,892,738	100 119	561,900	551,086	288,218	93,724,059	3.41
12/24/2016	77,369,179	1823 (\$2.N); 1824 (\$5.N) - 12/19/16	2,210,042	8.25 8.75	421,128	4,973,874	91,323	861,510	1,331,122	1,375 200	2,200,791	67 76	590,601	2,035,860	117,672	3,119,154	40 50	473,229	558,224	291,886	96,645,594	3.52
12/31/2016	80,868,854	0	2,282,841	9.5 10.25	440,711	4,899,905	94,021	861,849	887,304	225 275	2,362,970	85 96	630,614	2,004,547	116,201	3,351,922	60 70	506,969	555,832	293,476	100,158,015	3.65
1/7/2017	73,328,624	1825 (\$1.N); 1826 (\$5.N); 1827 (\$10.N) - 01/03/17	2,097,687	10.75 11.5	408,605	4,745,822	91,405	842,694	819,153	200 200	2,524,889	105 117	654,478	1,898,406	110,548	3,107,618	80 94	474,348	550,422	285,570	91,940,268	3.35
1/14/2017	73,471,643	0	2,225,676	12 12.5	433,448	5,078,795	95,352	857,133	949,656	225 300	2,863,206	126 137	730,587	1,930,373	112,082	3,684,764	106 121	544,661	562,100	283,564	93,823,040	3.42
1/21/2017	72,229,342	1775 (\$2.N); 1760 (\$3.N); 1863 (\$5.N); 1864 (\$5.N); 1865 (\$5.N); 1829 (\$20.N) - 01/16/17	2,187,377	13.25 14	426,689	4,773,213	89,986	839,794	1,221,317	425 575	2,924,743	150 162	731,997	1,874,302	108,260	3,809,290	135 153	558,760	531,350	272,232	92,578,652	3.37
1/28/2017	72,056,793	0	2,265,574	14.75 15.5	435,796	4,784,366	89,015	836,675	1,639,149	750 950	3,196,084	177 188	786,375	1,799,122	97,940	4,327,764	170 187	608,152	532,502	270,144	93,725,450	3.41
2/4/2017	77,292,806	0	2,340,683	16.25 17	457,065	5,065,632	97,384	859,297	1,988,757	1,200 1,450	1,807,723	15 20	506,796	1,898,166	105,468	5,456,612	206 229	741,396	557,324	279,486	99,454,595	3.62
2/11/2017	78,699,192	1752 (\$5.N); 1867 (\$10.N) - 02/06/17 1767 (\$1.N) - 02/10/17	2,353,444	17.5 18	462,141	5,105,285	98,776	867,663	880,079	200 225	1,862,092	25 30	532,045	1,890,124	108,210	6,261,114	255 285	839,953	563,628	275,692	100,799,437	3.67
2/18/2017	77,864,124	0	2,407,222	18.75 19.75	478,558	4,833,590	93,535	844,013	908,531	300 200	1,973,451	38 46	561,783	1,826,773	108,517	8,780,642	310 349	1,133,132	550,644	276,074	102,640,589	3.74

Texas Lottery Commission - Weekly Sales Summary for FY 2017 (Unaudited)

Week Ended	Scratch Tickets	New Games & Dates	Lotto Texas	Jackpot		Lotto Extra	Pick 3	Pick 3 Sum It Up	Cash Five	Texas Two Step	Jackpot		Mega Millions	Jackpot		Megaplier	Daily 4	Daily 4 Sum It Up	Powerball	Jackpot		Power Play	All or Nothing	Texas Triple Chance	Total	Per Cap.	
				W	S						M	TH		T	F					W	S						
2/25/2017	80,287,015	1876 (\$1.N); 1831 (\$5.N) - 02/20/17	2,606,244	20.25	21	520,379	4,914,612	95,213	850,348	848,140	200	225	2,219,616	55	64	617,739	1,832,600	100,683	11,293,438	403	40	1,395,663	556,882	281,560	108,420,131	3.95	
3/4/2017	87,500,184	0	2,567,325	21.75	22.5	509,409	5,330,670	101,687	893,098	1,120,981	300	425	2,321,182	73	83	641,083	2,010,651	112,173	3,217,286	53	68	511,699	590,672	285,944	107,714,043	3.92	
3/11/2017	84,966,053	1699 (\$2.N); 1868 (\$3.N); 1833 (\$5.N) - 03/06/17 1755 (\$5.N); 1853 (\$20.N) - 03/08/17	2,588,161	23.5	24.5	513,793	5,226,715	101,446	881,469	1,405,624	600	775	2,563,375	94	106	683,906	1,899,173	103,287	3,637,612	85	104	562,430	579,420	278,346	105,990,810	3.86	
3/18/2017	82,972,977	1806 (\$3.N) - 03/14/17	2,592,069	25.5	26.25	513,061	4,875,639	93,232	851,969	854,304	200	225	2,652,325	119	131	701,405	1,772,646	94,333	4,006,212	123	141	601,813	550,726	274,558	103,407,268	3.76	
3/25/2017	82,217,628	1836 (\$1.N); 1835 (\$5.N); 1834 (\$10.N) - 03/20/17	2,602,050	26.75	27.25	516,731	5,013,110	100,086	846,048	856,270	200	225	2,824,549	140	151	736,397	1,805,723	95,407	3,520,114	155	40	542,539	555,218	268,750	102,500,620	3.73	
4/1/2017	86,271,920	0	2,020,314	5	5.25	408,799	5,070,719	101,350	863,130	886,811	300	200	3,145,112	162	174	818,473	1,853,296	97,814	2,918,488	50	60	468,058	573,072	271,708	105,769,062	3.85	
4/8/2017	81,499,404	1695 (\$2.N); 1850 (\$3.N); 1821 (\$5.N) - 04/03/17	2,012,832	5.5	5.75	413,441	5,120,496	102,223	877,611	863,201	225	200	1,840,599	15	20	530,730	1,891,162	98,057	2,801,946	40	50	446,980	582,584	272,432	99,353,698	3.62	
4/15/2017	81,831,134	0	2,025,065	6	6.25	418,151	4,887,655	93,845	848,027	931,230	225	300	1,870,081	25	30	541,020	1,849,252	101,095	2,996,096	60	70	470,454	564,516	269,150	99,696,770	3.63	
4/22/2017	80,531,863	1875 (\$1.N); 1773 (\$5.N); 1870 (\$50.N) - 04/17/17	2,015,821	6.5	6.75	410,500	4,874,889	93,304	841,820	1,151,971	425	575	1,921,222	37	45	546,796	1,907,275	103,817	3,157,754	80	90	469,659	557,346	265,084	98,869,120	3.60	
4/29/2017	81,433,819	0	2,051,812	7	7.25	419,985	4,894,357	92,684	845,077	849,146	200	225	2,038,253	52	61	572,946	1,946,857	101,948	3,741,048	100	113	562,887	567,734	272,248	100,390,800	3.65	
5/6/2017	84,857,262	1872 (\$2.N); 1861 (\$2.N); 1841 (\$5.N); 1842 (\$10.N) - 05/01/17	2,080,169	7.5	7.75	423,215	5,136,242	97,429	870,847	906,560	300	200	1,758,913	15	20	513,100	2,008,757	103,566	4,117,610	130	147	603,461	593,958	275,798	104,346,886	3.80	
5/13/2017	81,090,824	1858 (\$2.N) - 05/11/17	2,031,598	8	8.25	416,468	4,877,459	90,453	845,235	929,064	225	300	1,777,614	25	30	518,817	1,875,221	96,020	4,463,984	165	184	645,454	581,856	270,994	100,511,061	3.66	
5/20/2017	80,557,866	1843 (\$1.N); 1851 (\$5.N); 1838 (\$20.N) - 05/15/17	2,046,176	8.75	9.5	422,286	4,859,686	89,511	838,373	1,235,658	425	575	1,855,685	36	43	540,286	1,973,043	100,812	5,394,186	204	228	758,351	561,972	263,266	101,497,157	3.69	
5/27/2017	78,141,293	1886 (\$5.N) - 05/22/17	2,068,201	10	10.5	424,434	4,638,929	86,608	816,272	1,056,270	750	200	1,908,726	50	58	547,000	1,882,240	98,574	5,930,262	250	275	807,672	551,164	256,300	99,213,944	3.61	
6/3/2017	78,991,820	0	2,132,197	11	11.75	439,097	4,810,333	92,930	816,900	869,598	225	275	2,003,278	65	74	575,688	1,898,849	99,557	7,941,590	302	337	1,061,768	566,878	260,590	102,561,072	3.73	
6/10/2017	77,859,970	1882 (\$3.N); 1742 (\$5.N); 1830 (\$10.N) - 06/05/17	2,239,442	12.25	13	461,804	4,848,985	95,940	829,415	915,603	400	200	2,311,680	80	90	645,564	1,938,236	102,285	12,531,426	375	435	1,587,871	567,014	262,666	107,197,900	3.90	
weekly change	-1.4%		5.0%			5.2%	0.8%	3.2%	1.5%	5.3%		15.4%			12.1%	2.1%	2.7%	57.8%			49.5%		0.0%	0.8%		4.5%	
	<b>SALES</b>		<b>SALES</b>			<b>SALES</b>	<b>SALES</b>	<b>SALES</b>	<b>SALES</b>	<b>SALES</b>		<b>SALES</b>			<b>SALES</b>	<b>SALES</b>	<b>SALES</b>	<b>SALES</b>			<b>SALES</b>	<b>SALES</b>	<b>SALES</b>	<b>SALES</b>	<b>% of Sales</b>		
Calendar Year to date	1,835,953,556		51,557,139			10,333,855	113,767,194	2,183,389	19,562,908	24,087,073		52,164,398			14,235,011	43,462,243	2,360,447	117,096,856			16,417,161	12,948,982	6,272,156	2,322,402,368	100.0%		
Fiscal Year to date 2017	3,078,116,780		88,607,085			17,432,210	196,114,791	3,747,595	34,264,385	42,652,732		87,057,181			23,826,441	74,474,470	3,997,578	191,966,067			26,954,025	22,663,806	11,583,930	3,903,459,075	100.0%		
*Full week includes 4 days from FY16																											