



WEEKLY SALES SUMMARY

Unaudited

Week Ending: 07/11/2009

Texas Lottery Commission
Fiscal Year to Date Sales Comparison
Unaudited

Through the week ending 07/11/2009 (45 weeks)

Sales by Game	FY 2007 *	FY 2008 **	FY 2009	\$ Change		% Change	
				FY 2009 to FY 2007	FY 2009 to FY 2008	FY 2009 to FY 2007	FY 2009 to FY 2008
Instants	\$ 2,501,129,245	\$ 2,427,548,245	\$ 2,413,269,800	\$ -87,859,445	\$ -14,278,445	-3.5%	-0.6%
Lotto Texas	205,883,488	175,802,478	165,388,214	-40,495,274	-10,414,264	-19.7%	-5.9%
Pick 3	272,509,012	248,777,533	248,110,053	-24,398,960	-667,481	-9.0%	-0.3%
Pick 3 Sum It Up	-	5,641,403	5,187,152	5,187,152	-454,251	-	-8.1%
Cash 5	75,496,560	65,746,962	61,506,925	-13,989,635	-4,240,037	-18.5%	-6.4%
Texas Two Step	42,639,147	42,012,872	43,642,141	1,002,994	1,629,269	2.4%	3.9%
Mega Millions	152,511,124	149,792,033	167,153,088	14,641,964	17,361,055	9.6%	11.6%
Megaplier	36,101,117	35,518,917	38,011,855	1,910,738	2,492,938	5.3%	7.0%
Daily 4	-	36,674,451	40,159,318	40,159,318	3,484,867	-	9.5%
Daily 4 Sum It Up	-	7,552,555	4,723,828	4,723,828	-2,828,727	-	-37.5%
Total	\$ 3,286,269,693	\$ 3,195,067,448	\$ 3,187,152,373	\$ -99,117,320	\$ -7,915,075	-3.0%	-0.2%

* 3 extra days in 2007 ** 2 extra days in 2008

Texas Lottery Commission
Fiscal Year Over Year Change in Sales
Unaudited
FY 2009 Compared to FY 2008

Week	FY 2009 Week Ending	INSTANT TICKETS				ON-LINE GAMES				TOTAL SALES			
		FY 2009	FY 2008	Difference	% change - Cumulative Sales	FY 2009	FY 2008	Difference	% change - Cumulative Sales	FY 2009	FY 2008	Difference	% change - Cumulative Sales
1	9/6/2008**	\$44,890,104	\$62,376,229	(\$17,486,125)	-28.0%	\$14,722,011	\$19,372,224	(\$4,650,213)	-24.0%	\$59,612,115	\$81,748,453	(\$22,136,338)	-27.1%
2	9/13/2008	\$46,309,551	\$52,458,866	(\$6,149,315)	-20.6%	\$13,704,860	\$16,926,163	(\$3,221,303)	-21.7%	\$60,014,411	\$69,385,029	(\$9,370,618)	-20.8%
3	9/20/2008	\$42,923,171	\$49,998,934	(\$7,075,763)	-18.6%	\$12,291,263	\$15,792,283	(\$3,501,020)	-21.8%	\$55,214,434	\$65,791,217	(\$10,576,783)	-19.4%
4	9/27/2008	\$47,042,801	\$49,894,175	(\$2,851,374)	-15.6%	\$14,222,339	\$14,800,514	(\$578,175)	-17.9%	\$61,265,140	\$64,694,689	(\$3,429,549)	-16.2%
5	10/4/2008	\$50,747,162	\$53,486,863	(\$2,739,701)	-13.5%	\$15,784,472	\$16,618,430	(\$833,958)	-15.3%	\$66,531,634	\$70,105,293	(\$3,573,659)	-14.0%
6	10/11/2008	\$49,763,789	\$50,918,020	(\$1,154,231)	-11.7%	\$15,622,498	\$15,601,410	\$21,088	-12.9%	\$65,386,287	\$66,519,430	(\$1,133,143)	-12.0%
7	10/18/2008	\$49,299,053	\$50,532,253	(\$1,233,200)	-10.5%	\$15,167,940	\$15,682,666	(\$514,726)	-11.6%	\$64,466,993	\$66,214,919	(\$1,747,926)	-10.7%
8	10/25/2008	\$49,977,581	\$50,347,450	(\$369,869)	-9.3%	\$14,525,843	\$15,586,516	(\$1,060,673)	-11.0%	\$64,503,424	\$65,933,966	(\$1,430,542)	-9.7%
9	11/1/2008	\$50,346,542	\$53,953,733	(\$3,607,191)	-9.0%	\$14,838,845	\$16,775,983	(\$1,937,139)	-11.1%	\$65,185,387	\$70,729,716	(\$5,544,330)	-9.5%
10	11/8/2008	\$54,860,087	\$53,635,090	\$1,224,997	-7.9%	\$16,057,069	\$15,912,791	\$144,278	-9.9%	\$70,917,156	\$69,547,881	\$1,369,275	-8.3%
11	11/15/2008	\$53,484,812	\$51,254,401	\$2,230,411	-6.8%	\$15,829,819	\$15,797,076	\$32,744	-9.0%	\$69,314,631	\$67,051,477	\$2,263,155	-7.3%
12	11/22/2008	\$52,806,511	\$50,897,817	\$1,908,694	-5.9%	\$16,460,748	\$15,801,720	\$659,028	-7.9%	\$69,267,259	\$66,699,537	\$2,567,722	-6.4%
13	11/29/2008	\$52,199,741	\$53,913,115	(\$1,713,374)	-5.7%	\$17,397,576	\$17,055,505	\$342,072	-7.1%	\$69,597,317	\$70,968,620	(\$1,371,303)	-6.0%
14	12/6/2008	\$56,731,851	\$55,702,697	\$1,029,154	-5.1%	\$20,363,789	\$17,900,717	\$2,463,073	-5.5%	\$77,095,640	\$73,603,414	\$3,492,227	-5.2%
15	12/13/2008	\$54,109,617	\$53,703,516	\$406,101	-4.7%	\$22,952,228	\$17,820,841	\$5,131,387	-3.0%	\$77,061,845	\$71,524,357	\$5,537,488	-4.3%
16	12/20/2008	\$55,777,328	\$57,592,769	(\$1,815,441)	-4.6%	\$15,833,517	\$17,436,233	(\$1,602,716)	-3.4%	\$71,610,845	\$75,029,002	(\$3,418,157)	-4.3%
17	12/27/2008	\$57,597,885	\$57,696,003	(\$98,118)	-4.3%	\$15,851,771	\$14,743,680	\$1,108,091	-2.9%	\$73,449,656	\$72,439,683	\$1,009,973	-4.0%
18	1/3/2009	\$57,582,115	\$57,935,952	(\$353,837)	-4.1%	\$16,900,028	\$15,704,450	\$1,195,578	-2.3%	\$74,482,143	\$73,640,402	\$841,741	-3.7%
19	1/10/2009	\$54,250,945	\$55,360,542	(\$1,109,597)	-4.0%	\$16,203,220	\$15,691,540	\$511,680	-2.0%	\$70,454,165	\$71,052,082	(\$597,917)	-3.5%
20	1/17/2009	\$51,625,339	\$54,920,166	(\$3,294,827)	-4.1%	\$15,701,605	\$16,259,669	(\$558,064)	-2.1%	\$67,326,944	\$71,179,835	(\$3,852,891)	-3.6%
21	1/24/2009	\$52,789,573	\$54,439,890	(\$1,650,317)	-4.1%	\$15,897,473	\$16,691,724	(\$794,251)	-2.2%	\$68,687,046	\$71,131,614	(\$2,444,568)	-3.6%
22	1/31/2009	\$55,453,471	\$57,464,382	(\$2,010,911)	-4.0%	\$16,908,272	\$17,968,227	(\$1,059,955)	-2.4%	\$72,361,743	\$75,432,609	(\$3,070,866)	-3.7%
23	2/7/2009	\$62,247,711	\$60,715,019	\$1,532,692	-3.7%	\$18,354,314	\$20,097,338	(\$1,743,025)	-2.7%	\$80,602,025	\$80,812,357	(\$210,333)	-3.5%
24	2/14/2009	\$60,509,056	\$57,093,143	\$3,415,913	-3.3%	\$19,218,078	\$22,179,908	(\$2,961,831)	-3.3%	\$79,727,134	\$79,273,051	\$454,083	-3.3%
25	2/21/2009	\$59,194,623	\$57,627,047	\$1,567,576	-3.0%	\$21,098,199	\$27,230,539	(\$6,132,340)	-4.5%	\$80,292,822	\$84,857,586	(\$4,564,764)	-3.4%
26	2/28/2009	\$58,857,216	\$55,591,667	\$3,265,549	-2.7%	\$24,116,924	\$17,016,118	\$7,100,806	-2.8%	\$82,974,140	\$72,607,785	\$10,366,355	-2.7%
27	3/7/2009	\$59,552,257	\$56,837,481	\$2,714,776	-2.4%	\$23,995,136	\$16,690,193	\$7,304,943	-1.1%	\$83,547,393	\$73,527,674	\$10,019,719	-2.1%
28	3/14/2009	\$53,754,084	\$54,587,112	(\$833,028)	-2.4%	\$18,769,831	\$16,448,165	\$2,321,667	-0.6%	\$72,523,915	\$71,035,277	\$1,488,639	-1.9%
29	3/21/2009	\$52,581,107	\$53,098,937	(\$517,830)	-2.3%	\$15,903,038	\$16,639,184	(\$736,146)	-0.7%	\$68,484,145	\$69,738,121	(\$1,253,976)	-1.9%
30	3/28/2009	\$52,560,961	\$53,933,689	(\$1,372,728)	-2.3%	\$16,094,933	\$17,698,625	(\$1,603,692)	-1.0%	\$68,655,894	\$71,632,314	(\$2,976,420)	-2.0%
31	4/4/2009	\$56,249,759	\$57,598,982	(\$1,349,223)	-2.3%	\$17,357,002	\$17,665,411	(\$308,409)	-1.0%	\$73,606,761	\$75,264,393	(\$1,657,632)	-2.0%
32	4/11/2009	\$54,440,987	\$53,954,185	\$486,802	-2.2%	\$17,660,600	\$15,860,784	\$1,799,816	-0.7%	\$72,101,587	\$69,814,969	\$2,286,618	-1.9%
33	4/18/2009	\$52,755,834	\$53,946,736	(\$1,190,902)	-2.2%	\$18,469,585	\$16,452,676	\$2,016,909	-0.3%	\$71,225,419	\$70,399,412	\$826,007	-1.8%
34	4/25/2009	\$51,450,968	\$51,533,006	(\$82,038)	-2.2%	\$20,216,898	\$16,873,949	\$3,342,950	0.3%	\$71,667,866	\$68,406,955	\$3,260,912	-1.6%
35	5/2/2009	\$52,327,090	\$53,250,568	(\$923,478)	-2.2%	\$23,520,573	\$18,202,103	\$5,318,471	1.2%	\$75,847,663	\$71,452,671	\$4,394,993	-1.4%
36	5/9/2009	\$53,214,412	\$54,060,849	(\$846,437)	-2.1%	\$16,241,207	\$18,422,562	(\$2,181,355)	0.8%	\$69,455,619	\$72,483,411	(\$3,027,792)	-1.4%
37	5/16/2009	\$50,785,227	\$54,010,641	(\$3,225,414)	-2.2%	\$15,990,544	\$20,728,360	(\$4,737,816)	0.0%	\$66,775,771	\$74,739,001	(\$7,963,230)	-1.7%
38	5/23/2009	\$56,567,077	\$50,377,032	\$6,190,045	-1.9%	\$15,874,447	\$15,461,384	\$413,063	0.1%	\$72,441,524	\$65,838,416	\$6,603,108	-1.4%
39	5/30/2009	\$55,359,239	\$49,545,080	\$5,814,159	-1.6%	\$16,040,196	\$15,175,370	\$864,826	0.2%	\$71,399,435	\$64,720,450	\$6,678,985	-1.1%
40	6/6/2009	\$60,250,125	\$53,702,986	\$6,547,139	-1.2%	\$16,301,599	\$15,982,166	\$319,434	0.2%	\$76,551,724	\$69,685,152	\$6,866,573	-0.9%

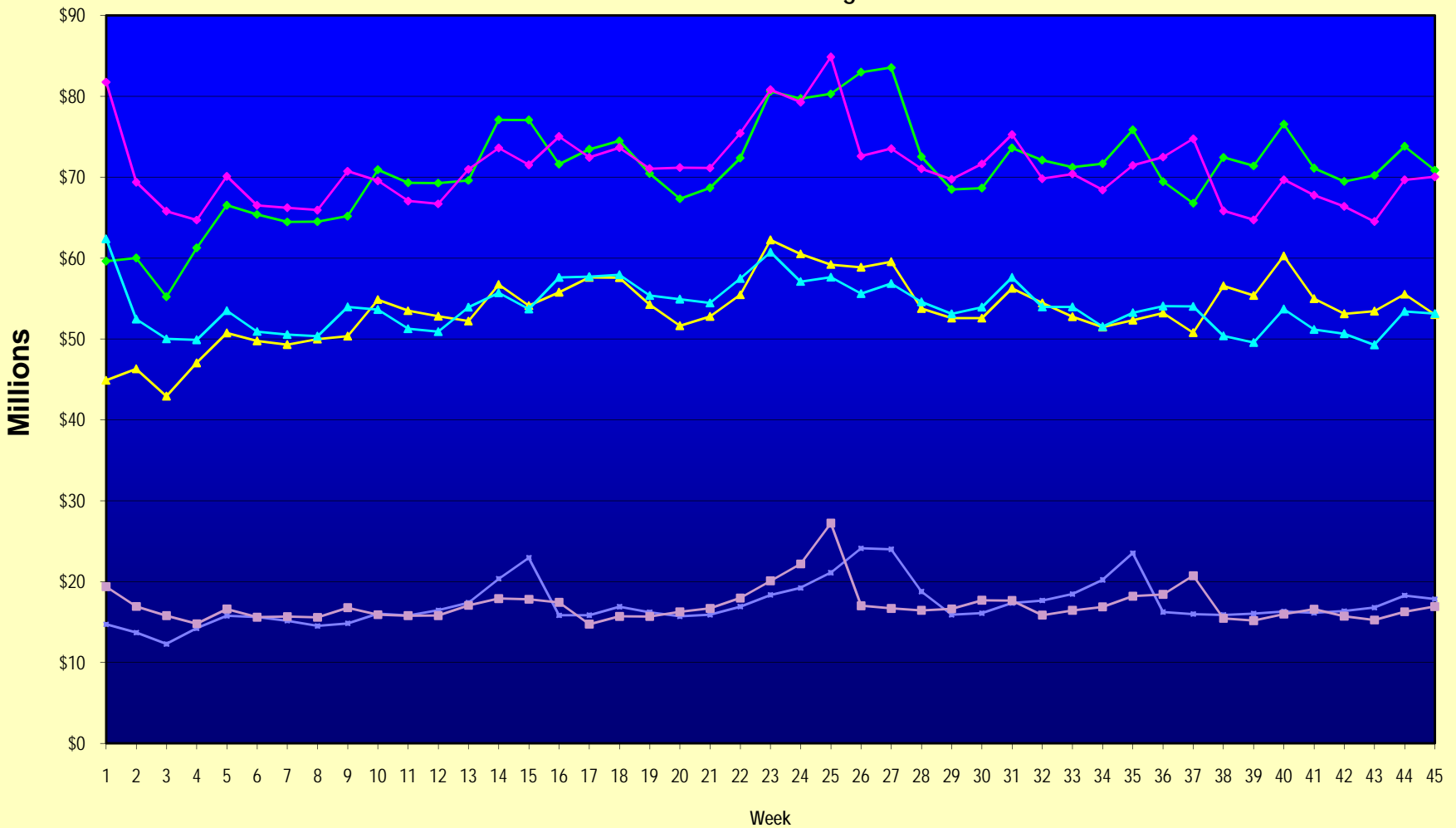
Note: Week 1 is not a full week of sales as this report is prepared on a Fiscal Year basis.

Texas Lottery Commission
Fiscal Year Over Year Change in Sales
Unaudited
FY 2009 Compared to FY 2008

Week	FY 2009 Week Ending	INSTANT TICKETS				ON-LINE GAMES				TOTAL SALES			
		FY 2009	FY 2008	Difference	% change - Cumulative Sales	FY 2009	FY 2008	Difference	% change - Cumulative Sales	FY 2009	FY 2008	Difference	% change - Cumulative Sales
41	6/13/2009	\$54,979,517	\$51,171,483	\$3,808,034	-1.0%	\$16,143,215	\$16,589,087	(\$445,872)	0.2%	\$71,122,732	\$67,760,570	\$3,362,162	-0.7%
42	6/20/2009	\$53,109,433	\$50,650,362	\$2,459,071	-0.9%	\$16,357,924	\$15,728,484	\$629,440	0.3%	\$69,467,357	\$66,378,846	\$3,088,511	-0.6%
43	6/27/2009	\$53,431,083	\$49,258,266	\$4,172,817	-0.7%	\$16,786,203	\$15,250,905	\$1,535,298	0.5%	\$70,217,286	\$64,509,171	\$5,708,115	-0.4%
44	7/4/2009	\$55,518,615	\$53,393,355	\$2,125,260	-0.6%	\$18,292,421	\$16,270,619	\$2,021,802	0.7%	\$73,811,036	\$69,663,974	\$4,147,062	-0.3%
45	7/11/2009	\$53,004,390	\$53,127,756	(\$123,366)	-0.6%	\$17,842,530	\$16,914,922	\$927,608	0.8%	\$70,846,920	\$70,042,678	\$804,242	-0.2%
46	7/18/2009		\$51,593,146				\$17,752,738				\$69,345,884		
47	7/25/2009		\$49,902,181				\$16,706,145				\$66,608,326		
48	8/1/2009		\$49,605,420				\$16,254,383				\$65,859,803		
49	8/8/2009		\$50,961,907				\$16,770,496				\$67,732,403		
50	8/15/2009		\$49,452,511				\$16,749,487				\$66,201,998		
51	8/22/2009		\$49,249,518				\$17,286,302				\$66,535,820		
52	8/29/2009		\$49,468,928				\$18,109,997				\$67,578,925		
53	9/5/2009		\$6,054,239				\$493,109				\$6,547,348		
Total thru Current Week		\$2,413,269,800	\$2,427,548,245	(\$14,278,445)	-0.6%	\$773,882,573	\$767,519,203	\$6,363,370	0.8%	\$3,187,152,373	\$3,195,067,448	(\$7,915,075)	-0.2%
Fiscal Year Total		\$2,413,269,800	\$2,783,836,095			\$773,882,573	\$887,641,858			\$3,187,152,373	\$3,671,477,953		

** FY 2009 includes 6 days; FY 2008 includes 8 days
FY 2009 average daily sales are \$9,242,258. Two days at average daily sales are \$18,484,516.

Texas Lottery Commission Fiscal Year Over Year Change in Sales



◆ Total Sales 2009
 ◆ Total Sales 2008
 ▲ Instant Tickets 2009
 ▲ Instant Tickets 2008
 ◆ On-Line Games 2009
 ■ On-Line Games 2008

Note: Week 1 is not a full week of sales as this report is prepared on a Fiscal Year basis.

Texas Lottery Commission
Instant Tickets by Price Point
Sales, Prize Expense, Sales Contribution and Payout Percentage With Year Over Year Changes
Unaudited

Fiscal Year	Price Point	# of Active Games	FY Sales	% of Instant Ticket Sales	Year over Year Change in Sales	FY Prize Expense	Year over Year Change in Prize Expense	FY Sales Contribution	Year over Year Change in Contribution	Average Prize Payout %	Year over Year Change in Payout %
2008	\$1.00	47	200,064,970	8.2%		120,307,148		79,757,822		60.1%	0.1%
thru	\$2.00	55	408,573,916	16.8%		266,942,870		141,631,046		65.3%	0.7%
7/12/2008	\$3.00	18	220,604,535	9.1%		145,045,018		75,559,517		65.7%	-0.1%
	\$5.00	48	669,280,436	27.6%		454,644,951		214,635,485		67.9%	-0.1%
	\$7.00	13	136,107,412	5.6%		92,562,931		43,544,481		68.0%	0.1%
	\$10.00	20	363,883,766	15.0%		254,557,595		109,326,171		70.0%	-0.8%
	\$20.00	9	190,712,460	7.9%		136,977,752		53,734,708		71.8%	-0.2%
	\$25.00	2	53,814,700	2.2%		39,073,395		14,741,305		72.6%	0.3%
	\$30.00	3	53,792,100	2.2%		38,940,693		14,851,407		72.4%	0.2%
	\$50.00	3	130,713,950	5.4%		94,315,970		36,397,981		72.2%	0.0%
Total		218	\$2,427,548,245			\$1,643,368,323		\$784,179,922		67.7%	0.3%
2009	\$1.00	45	207,496,964	8.6%		124,797,740		82,699,224		60.1%	0.1%
thru	\$2.00	41	397,407,565	16.5%		259,278,308		138,129,257		65.2%	-0.1%
7/11/2009	\$3.00	18	250,985,877	10.4%		164,624,534		86,361,343		65.6%	-0.2%
	\$5.00	48	738,923,322	30.6%		502,864,412		236,058,910		68.1%	0.2%
	\$7.00	8	118,517,987	4.9%		80,602,086		37,915,901		68.0%	0.0%
	\$10.00	20	333,045,710	13.8%		233,004,643		100,041,067		70.0%	0.0%
	\$20.00	9	250,258,320	10.4%		182,196,221		68,062,099		72.8%	1.5%
	\$25.00	1	2,372,325	0.1%		1,725,527		646,798		72.7%	0.2%
	\$30.00	3	10,023,630	0.4%		7,263,494		2,760,136		72.5%	0.1%
	\$50.00	4	104,238,100	4.3%		77,327,792		26,910,308		74.2%	2.8%
Total		197	\$2,413,269,800			\$1,633,684,757		\$779,585,043		67.7%	0.0%
Variance	\$1.00	-2	7,431,994		3.7%	4,490,591	3.7%	2,941,403	3.7%	0.01%	
2009 to	\$2.00	-14	-11,166,351		-2.7%	-7,664,561	-2.9%	-3,501,790	-2.5%	-0.09%	
2008	\$3.00	0	30,381,342		13.8%	19,579,516	13.5%	10,801,826	14.3%	-0.16%	
	\$5.00	0	69,642,886		10.4%	48,219,462	10.6%	21,423,424	10.0%	0.12%	
	\$7.00	-5	-17,589,425		-12.9%	-11,960,845	-12.9%	-5,628,580	-12.9%	0.00%	
	\$10.00	0	-30,838,056		-8.5%	-21,552,952	-8.5%	-9,285,104	-8.5%	0.01%	
	\$20.00	0	59,545,860		31.2%	45,218,470	33.0%	14,327,390	26.7%	0.98%	
	\$25.00	-1	-51,442,375		-95.6%	-37,347,868	-95.6%	-14,094,507	-95.6%	0.13%	
	\$30.00	0	-43,768,470		-81.4%	-31,677,199	-81.3%	-12,091,271	-81.4%	0.07%	
	\$50.00	1	-26,475,850		-20.3%	-16,988,177	-18.0%	-9,487,673	-26.1%	2.03%	
Total		-21	-\$14,278,445		-0.6%	-\$9,683,565	-0.6%	-\$4,594,880	-0.6%	0.00%	

Texas Lottery Commission
Instant Tickets by Price Point
Sales, Prize Expense, Sales Contribution and Payout Percentage With Year Over Year Changes
 Unaudited

Notes - Instant Ticket Variances

		FY 2009		FY 2008		Difference
Sales	\$1 - \$7		\$1,713,331,715		\$1,634,631,269	\$78,700,446
Prize Exp.	\$1 - \$7		\$1,132,167,080		\$1,079,502,918	\$52,664,162
Sales Cont.	\$1 - \$7		\$581,164,635		\$555,128,351	\$26,036,284
Prize Exp. %	\$1 - \$7		66.1%		66.0%	0.0%
		FY 2009		FY 2008		Difference
Sales	\$10 - \$50		\$699,938,085		\$792,916,976	-\$92,978,891
Prize Exp.	\$10 - \$50		\$501,517,677		\$563,865,404	-\$62,347,727
Sales Cont.	\$10 - \$50		\$198,420,408		\$229,051,572	-\$30,631,164
Prize Exp. %	\$10 - \$50		71.7%		71.1%	0.5%
		FY 2009		FY 2008		Difference
Sales	Instant		\$2,413,269,800		\$2,427,548,245	-\$14,278,445
Prize Exp.	Instant		\$1,633,684,757		\$1,643,368,323	-\$9,683,565
Sales Cont.	Instant		\$779,585,043		\$784,179,922	-\$4,594,880
Prize Exp. %	Instant		67.7%		67.7%	0.0%

		FY 2009		FY 2008		Difference
Sales	\$1 - \$10		\$2,046,377,425		\$1,998,515,035	\$47,862,390
Prize Exp.	\$1 - \$10		\$1,365,171,723		\$1,334,060,513	\$31,111,210
Sales Cont.	\$1 - \$10		\$681,205,702		\$664,454,522	\$16,751,180
Prize Exp. %	\$1 - \$10		66.7%		66.8%	0.0%
		FY 2009		FY 2008		Difference
Sales	\$20 - \$50		\$366,892,375		\$429,033,210	-\$62,140,835
Prize Exp.	\$20 - \$50		\$268,513,034		\$309,307,809	-\$40,794,775
Sales Cont.	\$20 - \$50		\$98,379,341		\$119,725,401	-\$21,346,060
Prize Exp. %	\$20 - \$50		73.2%		72.1%	1.1%
		FY 2009		FY 2008		Difference
Sales	Instant		\$2,413,269,800		\$2,427,548,245	-\$14,278,445
Prize Exp.	Instant		\$1,633,684,757		\$1,643,368,323	-\$9,683,565
Sales Cont.	Instant		\$779,585,043		\$784,179,922	-\$4,594,880
Prize Exp. %	Instant		67.7%		67.7%	0.0%

Texas Lottery Commission
 Weekly Sales Summary
 & Comparison to Previous Week
 Unaudited

	Week Ending 07/11/2009		Week Ending 07/04/2009			
	<u>THIS WEEK</u>	% of Sales	<u>LAST WEEK</u>	% of Sales	<u>\$ change</u>	<u>% change</u>
Total Sales	<u>\$70,846,920</u>		<u>\$73,811,036</u>		<u>-\$2,964,116</u>	-4.02%
Instant Tickets	<u>\$53,004,390</u>	74.8%	<u>\$55,518,615</u>	75.2%	<u>-\$2,514,225</u>	-4.53%
Lotto Texas	\$4,220,775	6.0%	\$3,978,976	5.4%	\$241,799	6.08%
Pick 3	\$5,261,294	7.4%	\$5,365,381	7.3%	-\$104,088	-1.94%
Pick 3 Sum It Up	\$108,424	0.2%	\$109,235	0.1%	-\$811	-0.74%
Cash 5	\$1,309,778	1.8%	\$1,301,272	1.8%	\$8,506	0.65%
Texas Two Step	\$997,751	1.4%	\$834,396	1.1%	\$163,355	19.58%
Mega Millions	\$3,994,574	5.6%	\$4,619,366	6.3%	-\$624,792	-13.53%
Megaplier	\$883,721	1.2%	\$987,368	1.3%	-\$103,647	-10.50%
Daily 4	\$964,339	1.4%	\$990,474	1.3%	-\$26,135	-2.64%
Daily 4 Sum It Up	<u>\$101,875</u>	0.1%	<u>\$105,954</u>	0.1%	<u>-\$4,079</u>	-3.85%
Total Online Sales	<u>\$17,842,530</u>		<u>\$18,292,421</u>		<u>-\$449,891</u>	-2.46%

* Totals may not sum due to rounding.

Texas Lottery Commission
Weekly Sales Summary
Unaudited

INSTANT TICKETS
TOP TEN SELLING GAMES

For the Week Ending : 07/11/2009

Rank	Price Point	Game	Sales (Millions)
1	\$ 20	\$500,000,000 BLOCKBUSTER	\$ 8.767
2	\$ 5	CADILLAC ESCALADE CASH	\$ 2.631
3	\$ 10	SUMMER SPECTACULAR	\$ 2.533
4	\$ 5	PURE GOLD	\$ 2.477
5	\$ 3	BONUS CASHWORD	\$ 2.236
6	\$ 5	CASH VAULT	\$ 2.166
7	\$ 50	\$140,000,000 EXTREME PAYOUT	\$ 1.925
8	\$ 10	SET FOR LIFE	\$ 1.827
9	\$ 5	CASH FRENZY	\$ 1.743
10	\$ 2	BREAK THE BANK	\$ 1.632

Texas Lottery Commission
Prize Payout Tracking Report
Unaudited

Through Week Ending 07/11/2009

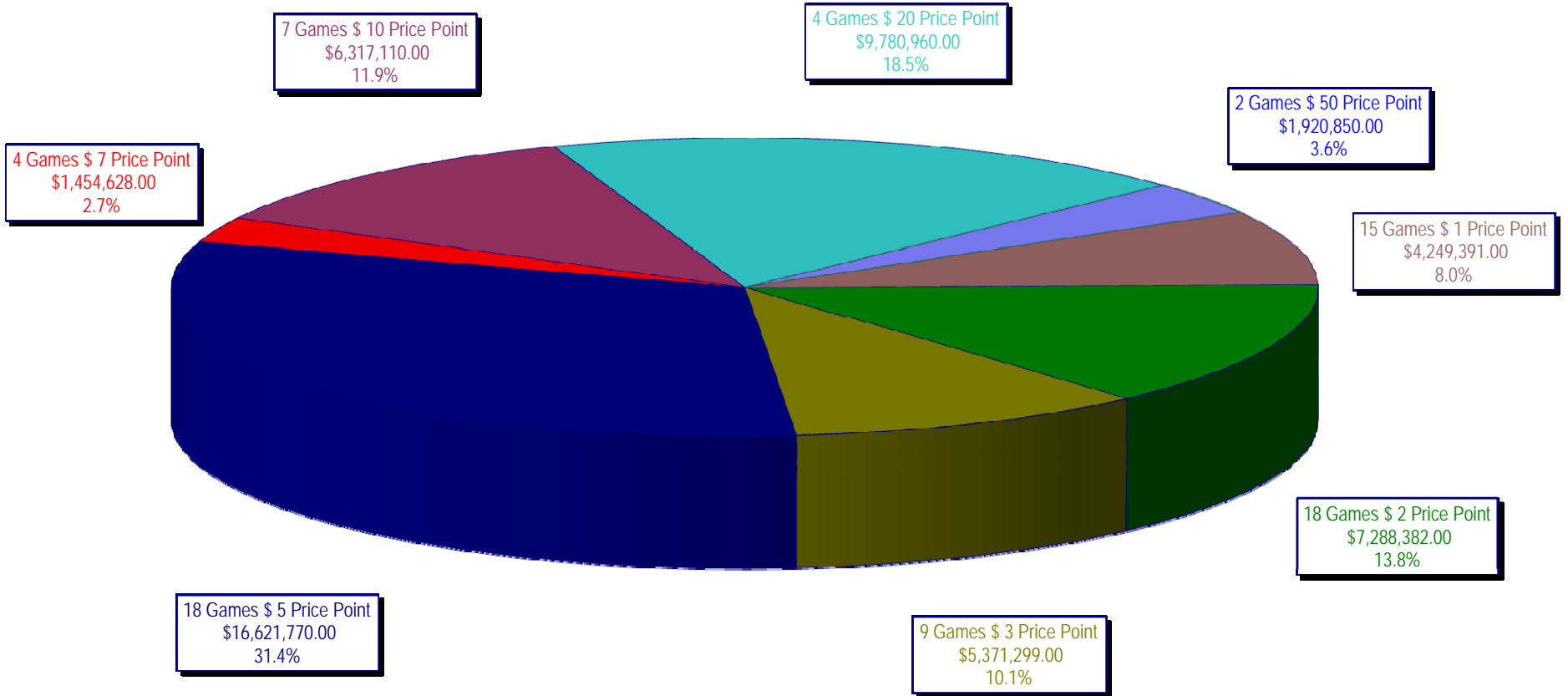
On-Line Sales

		FY Sales Through Week Ending 7/11/2009		FY Prize Expense Through Week Ending 7/11/2009	Actual* Prize Payout	Base Payout (Prize Pool)
Lotto	\$	165,388,214	\$	83,280,790	50.35%	50.00%
Pick 3		248,110,053		120,187,770	48.44%	50.00%
Pick 3 Sum It Up		5,187,152		2,343,715	45.18%	50.00%
Cash 5		61,506,925		30,858,693	50.17%	50.00%
Texas Two-Step		43,642,141		23,010,778	52.73%	50.00%
Mega Millions		167,153,088		83,550,035	49.98%	50.00%**
Megaplier		38,011,855		19,425,706	51.10%	N/A
Daily 4		40,159,318		19,942,975	49.66%	50.00%
Daily 4-Sum It Up		4,723,828		1,995,026	42.23%	50.00%
Totals	\$	773,882,573	\$	384,595,487	49.70%	

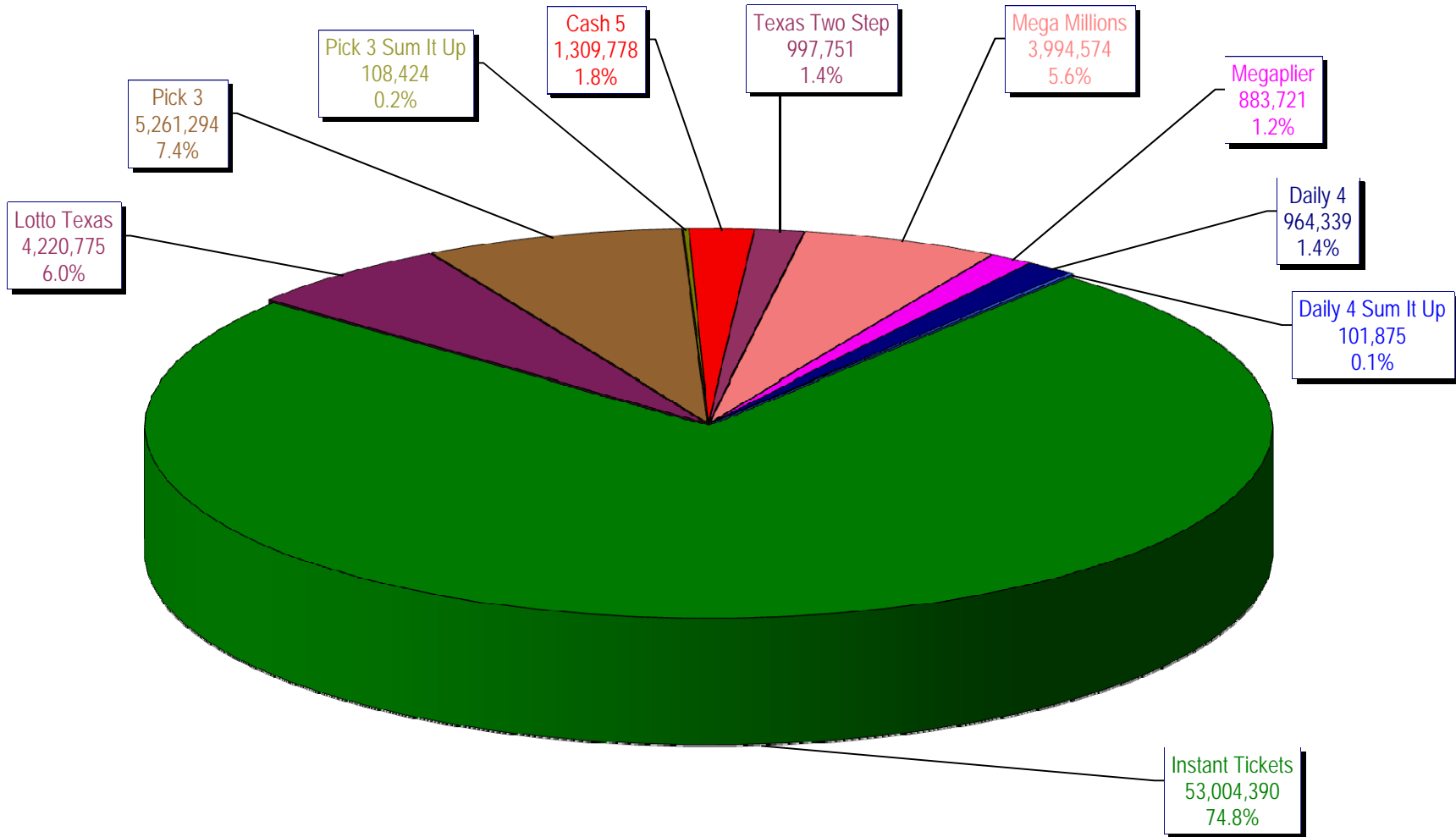
* Before Unclaimed Prizes

** Estimated; depends on # of guaranteed prizes won in Texas

Texas Lottery Commission
Instant Ticket Sales
For the Week Ending 07/11/2009
(Unaudited)



Texas Lottery Commission
All Game Sales
For the Week Ending 07/11/2009
(Unaudited)



Texas Lottery Commission - Weekly Sales Summary for FY 2009 (Unaudited)

Week Ended	Instant Games	New Games & Dates	Lotto Texas	Jackpot		Pick 3	Pick 3 Sum It Up	Cash 5	Texas Two Step	Jackpot		Mega Millions	Jackpot		Megaplier	Daily 4	Daily 4 Sum It Up	Total	Per Cap.
				W	S					M/T	TH/F		T	F					
9/6/2008	50,944,343.00	1108 (\$2,N), 1088 (\$3, N) - 9/01/08	3,378,718.00	5	6	5,436,414.00	122,123.00	1,396,622.00	890,346.00	350	450	2,445,490.00	12	16	649,090.00	786,482.50	109,834.00	66,159,462.50	2.77
9/13/2008	46,309,551.00	1109 (\$1,N), 1098 (\$5, N) - 9/08/08	3,020,089.00	7	8	4,705,585.50	105,899.00	1,279,412.00	856,199.00	600	200	2,327,214.00	24	12	617,672.00	696,633.00	96,156.50	60,014,411.00	2.51
9/20/2008	42,923,171.00	0	3,054,093.00	9	10	4,121,734.50	90,718.00	1,155,350.00	637,792.00	225	250	1,978,127.00	15	12	540,225.00	627,210.00	86,013.50	55,214,434.00	2.31
9/27/2008	47,042,801.00	1111 (\$2,N), 1099 (\$5, N) - 9/22/08	3,427,671.00	11	12	4,821,563.00	103,189.50	1,288,062.00	834,307.00	275	425	2,322,862.00	16	24	617,085.00	709,741.50	97,858.00	61,265,140.00	2.56
10/4/2008	50,747,162.00	1113 (\$1,N) 9/29/08	3,675,683.00	13	14	5,305,711.00	116,332.50	1,369,040.00	1,074,874.00	525	650	2,671,927.00	32	42	693,845.00	770,782.50	106,277.00	66,531,634.00	2.78
10/11/2008	49,763,789.00	0	3,732,365.00	15	16	5,287,094.00	114,665.50	1,370,334.00	1,305,250.00	800	975	2,306,070.00	12	16	622,120.00	778,204.00	106,395.00	65,386,286.50	2.74
10/18/2008	49,299,053.00	1117 (\$3,N), 1118 (\$20,N) - 10/13/08	3,780,438.00	17	18	5,149,258.00	109,530.00	1,355,601.00	741,849.00	200	200	2,500,644.00	23	32	652,198.00	776,366.00	102,056.00	64,466,993.00	2.70
10/25/2008	49,977,581.00	1119 (\$1,N), 1120 (\$5,N) - 10/20/08	3,210,762.00	4	5	5,099,671.00	107,104.50	1,339,079.00	789,649.00	225	275	2,456,965.00	42	12	641,206.00	778,434.00	102,972.50	64,503,424.00	2.70
11/1/2008	50,346,542.00	1121 (\$2,N), 1122 (\$10,N) - 10/27/08	3,325,641.00	6	7	5,234,124.00	109,983.00	1,339,046.00	946,035.00	375	475	2,347,596.00	16	23	626,235.00	805,572.00	104,612.50	65,185,386.50	2.73
11/8/2008	54,860,087.00	1123 (\$3,N), 1124 (\$7,N) - 11/03/08; 1103 (\$3,N) - 11/05/08; 1063 (\$3,N) - 11/07/08	3,290,417.00	4	5	5,686,701.00	118,495.00	1,397,985.00	1,158,101.00	625	750	2,729,302.50	31	42	692,662.00	871,230.00	112,175.50	70,917,156.00	2.97
11/15/2008	53,484,812.00	1125 (\$1, N), 1126 (\$5,N) - 11/10/08	3,336,934.00	6	7	5,459,984.00	112,884.00	1,366,024.00	766,955.00	200	225	3,102,251.00	51	62	749,736.00	830,957.00	104,094.00	69,314,631.00	2.90
11/22/2008	52,806,511.00	0	3,452,481.00	8	9	5,329,591.00	108,861.50	1,358,271.00	743,950.00	200	200	3,666,517.00	73	86	847,201.00	849,077.50	104,797.50	69,267,258.50	2.90
11/29/2008	52,199,741.00	1127 (\$2,N), 1128 (\$5,N) - 11/24/08	3,585,374.00	10	11	5,340,783.50	111,443.00	1,315,233.00	686,077.00	200	225	4,441,715.00	96	111	968,906.00	845,475.50	102,569.00	69,597,317.00	2.91
12/6/2008	56,731,851.00	0	3,794,991.00	12	13	5,752,593.00	121,663.50	1,416,446.00	780,328.00	250	200	6,238,355.00	128	146	1,270,214.00	881,841.50	107,357.00	77,095,640.00	3.23
12/13/2008	54,109,617.00	1129 (\$1, N) - 12/08/08	3,315,658.00	4	5	5,580,770.00	114,295.50	1,384,858.00	766,893.00	225	250	9,150,536.00	170	207	1,691,121.00	846,176.50	101,919.50	77,061,844.50	3.22
12/20/2008	55,777,328.00	1104 (\$2,N), 1105 (\$5,N), 1106 (\$10,N) - 12/15/08	3,432,340.00	6	7	5,741,120.00	116,075.50	1,401,805.00	741,945.00	200	200	2,736,234.00	12	16	687,875.00	871,579.50	104,543.00	71,610,845.00	3.00
12/27/2008	57,597,885.00	1077 (\$1,N), 1110 (\$1,N) - 12/22/08	3,582,169.00	8	4	5,628,081.50	115,323.00	1,340,590.00	708,906.00	225	250	2,842,167.00	22	29	706,042.00	828,346.00	100,146.00	73,449,655.50	3.07
1/3/2009	57,582,115.00	0	3,784,763.00	5	6	5,690,220.50	120,519.50	1,406,807.00	934,000.00	325	525	3,190,457.00	37	46	780,850.00	885,674.00	106,736.50	74,482,142.50	3.12
1/10/2009	54,250,945.00	1135 (\$2,N), 1136 (\$5,N) - 1/5/09	3,582,400.00	7	8	5,476,890.00	116,674.50	1,403,531.00	1,267,847.00	675	900	2,701,275.00	12	16	681,574.00	868,919.00	104,109.50	70,454,165.00	2.95
1/17/2009	51,625,339.00	1137 (\$1,N), 1138 (\$3,N) - 1/12/09	3,668,302.50	9	10	5,443,159.00	112,605.00	1,387,958.00	778,563.00	200	200	2,683,707.00	22	12	675,416.00	852,987.00	98,907.50	67,326,944.00	2.82
1/24/2009	52,789,573.00	1115 (\$2,N), 1116 (\$5,N) - 1/19/09	3,723,835.50	11	12	5,514,547.50	115,827.50	1,376,695.00	860,483.00	225	325	2,692,611.00	16	21	676,936.00	836,996.00	99,541.00	68,687,045.50	2.87
1/31/2009	55,453,471.00	1080 (\$1,N), 1024 (\$20,R) - 1/26/09; 1062 (\$5,N) - 1/28/09	3,837,299.00	13	14	5,700,714.50	121,794.50	1,403,756.00	1,070,879.00	450	600	3,002,883.00	30	40	731,253.00	925,937.50	113,755.50	72,361,743.00	3.03
2/7/2009	62,247,711.00	1035 (\$2,N), 1144 (\$5,N), 1058 (\$10, N) - 2/2/09	4,092,117.00	15	16	6,336,717.00	134,543.00	1,481,812.00	842,746.00	200	225	3,509,032.00	50	60	829,550.00	1,007,529.00	120,267.50	80,602,024.50	3.37
2/14/2009	60,509,056.00	1146 (\$7,N), 1089 (\$1,N) - 2/9/09	4,119,193.00	17	18	6,363,028.00	133,901.50	1,445,616.00	1,013,987.00	325	450	4,082,572.00	73	85	928,813.00	1,010,898.50	120,068.50	79,727,133.50	3.34
2/21/2009	59,194,623.00	1046 (\$2,N), 1140 (\$5,N) - 2/16/09	4,326,401.00	19	20	6,038,807.50	128,493.00	1,439,312.00	1,268,803.00	600	750	5,614,471.00	103	120	1,178,133.00	988,075.00	115,703.50	80,292,822.00	3.36
2/28/2009	58,857,216.00	1132 (\$10,N), 1149 (\$1,N) - 2/23/09	4,526,304.00	21	22	6,084,457.50	128,979.50	1,439,607.00	1,668,414.00	925	1,150	7,676,975.00	145	171	1,504,895.00	973,121.00	114,171.00	82,974,140.00	3.47

Texas Lottery Commission - Weekly Sales Summary for FY 2009 (Unaudited)

Week Ended	Instant Games	New Games & Dates	Lotto Texas	Jackpot		Pick 3	Pick 3 Sum It Up	Cash 5	Texas Two Step	Jackpot		Mega Millions	Jackpot		Megaplier	Daily 4	Daily 4 Sum It Up	Total	Per Cap.
				W	S					M/T	TH/F		T	F					
3/7/2009	59,552,257.00	0	4,928,440.00	23	25	6,133,789.00	128,599.00	1,487,185.00	1,984,358.00	1,350	1,600	6,898,457.00	212	12	1,349,427.00	971,644.50	113,236.00	83,547,392.50	3.50
3/14/2009	53,754,084.00	1139 (\$2.N), 1079 (\$5.N) - 3/09/09	4,752,592.00	26	28	5,850,166.00	120,684.50	1,418,127.00	2,112,571.00	1,900	2,150	2,782,204.00	16	26	698,214.00	925,615.00	109,657.50	72,523,915.00	3.03
3/21/2009	52,581,107.00	1107 (\$1.N), 1154 (\$3.N), 1057 (\$10.N) - 3/16/09; 1102 (\$2.N) - 3/19/09	3,437,818.00	4	5	5,776,041.50	117,294.00	1,399,720.00	880,620.00	200	225	2,595,785.00	12	16	653,517.00	934,185.00	108,057.50	68,484,145.00	2.87
3/28/2009	52,560,961.00	1130 (\$5.N), 1150 (\$10.N) - 3/23/09	3,486,731.00	6	7	5,633,454.50	114,269.50	1,381,550.00	901,673.00	300	200	2,845,499.00	24	34	701,971.00	925,093.50	104,691.50	68,655,894.00	2.87
4/4/2009	56,249,759.00	1151 (\$2.N), 1101 (\$50.N) - 3/30/09	3,746,083.00	8	9	5,893,043.50	122,332.00	1,429,598.00	940,614.00	225	300	3,321,274.00	43	54	794,282.00	998,042.00	111,733.50	73,606,761.00	3.08
4/11/2009	54,440,987.00	1153 (\$2.N) - 4/07/09; 1152 (\$3.N) - 4/08/09	3,594,176.00	10	4	5,893,551.00	120,491.50	1,394,879.00	933,807.00	425	200	3,772,700.00	65	78	857,890.00	987,127.50	105,977.50	72,101,586.50	3.02
4/18/2009	52,755,834.00	1145 (\$1.N), 1148 (\$5.N) - 4/13/09	3,462,217.00	5	6	5,627,572.00	117,123.50	1,374,682.00	829,493.00	225	200	4,960,982.00	92	109	1,040,136.00	957,161.00	100,218.50	71,225,419.00	2.98
4/25/2009	51,450,968.00	1051 (\$7.N) - 4/20/09	3,517,624.00	7	8	5,408,672.50	117,314.50	1,347,754.00	876,206.00	225	300	6,614,120.95	130	155	1,298,021.00	937,777.00	99,408.50	71,667,866.45	3.00
5/2/2009	52,327,090.00	1161 (\$1.N), 1081 (\$5.N) - 4/27/09	3,679,438.00	9	10	5,512,770.50	113,755.50	1,362,174.00	880,888.00	425	200	9,277,686.00	181	225	1,653,107.00	937,874.00	102,880.00	75,847,663.00	3.17
5/9/2009	53,214,412.00	0	3,554,635.00	11	4	5,603,106.00	118,185.50	1,389,454.00	823,436.00	225	200	2,961,748.00	12	17	718,169.00	967,592.00	104,881.00	69,455,618.50	2.91
5/16/2009	50,785,227.00	1131 (\$2.N), 1134 (\$5.N) - 5/11/09	3,332,475.00	5	6	5,417,197.00	112,501.00	1,356,843.00	842,436.00	225	275	3,116,696.00	28	38	748,141.00	959,922.50	104,332.00	66,775,770.50	2.79
5/23/2009	56,567,077.00	1165 (\$1.N), 1114 (\$20.N) - 5/18/09; 1156 (\$1.N) - 5/19/09; 1153 (\$2.N) - 5/20/09	3,425,065.00	7	8	5,363,150.50	111,143.50	1,356,979.00	1,061,946.00	400	525	2,790,741.00	12	16	694,815.00	967,375.50	103,231.00	72,441,523.50	3.03
5/30/2009	55,359,239.00	1049 (\$3.N) - 5/25/09	3,480,479.00	9	10	5,329,739.50	108,222.50	1,314,598.00	1,173,008.00	650	800	2,871,590.00	25	35	705,366.00	957,423.50	99,769.00	71,399,434.50	2.99
6/6/2009	60,250,125.00	1112 (\$5.N) - 6/1/09	3,656,108.00	11	12	5,806,294.00	117,692.00	1,379,840.00	833,645.00	200	225	2,696,889.00	12	17	684,660.00	1,020,540.50	105,930.50	76,551,724.00	3.20
6/13/2009	54,979,517.00	1133 (\$1.N), 1162 (\$5.N) - 6/8/09	3,639,064.00	13	14	5,434,316.00	109,481.50	1,323,811.00	960,321.00	300	400	2,892,403.00	25	36	712,936.00	967,447.50	103,434.50	71,122,731.50	2.98
6/20/2009	53,109,433.00	1087 (\$2.N), 1166 (\$10.N) - 6/15/09	3,722,083.00	15	16	5,298,164.50	106,370.50	1,295,187.00	914,417.00	525	200	3,203,712.00	46	57	763,056.00	955,438.50	99,495.00	69,467,356.50	2.91
6/27/2009	53,431,083.00	1194 (\$5.N) - 6/22/09	3,826,811.00	17	18	5,294,301.50	105,363.00	1,280,460.00	779,414.00	225	200	3,619,796.00	68	81	829,739.00	951,028.50	99,289.50	70,217,285.50	2.94
7/4/2009	55,518,615.00	1173 (\$1.N), 1090 (\$10.N) - 06/29/09	3,978,976.00	19	20	5,365,381.00	109,234.50	1,301,272.00	834,396.00	225	275	4,619,366.00	94	113	987,368.00	990,473.50	105,953.50	73,811,035.50	3.09
7/11/2009	53,004,390.00	1155 (\$3.N), 1158 (\$5.N) - 07/06/09	4,220,775.00	21	22	5,261,293.50	108,423.50	1,309,778.00	997,751.00	375	500	3,994,574.00	133	12	883,721.00	964,339.00	101,874.50	70,846,919.50	2.96
weekly change	-4.53%		6.08%			-1.94%	-0.74%	0.65%	19.58%			-13.53%			-10.50%	-2.64%	-3.85%	-4.02%	
	SALES		SALES			SALES	SALES	SALES	SALES			SALES			SALES	SALES	SALES	SALES	% of Sales
Startup to date	35,893,855,802.00		10,444,485,261.00			3,546,829,005.00	11,672,981.50	2,180,662,935.00	469,907,859.00			1,093,291,683.45			256,219,889.00	82,376,289.00	13,062,631.50	54,200,498,308.45	100.0%
Calendar Year to date	1,511,952,127.00		105,115,969.00			155,669,506.00	175,670.50	37,924,481.00	28,748,722.00			109,334,779.95			24,352,074.00	26,168,630.50	2,921,824.00	2,002,363,783.95	100.0%
Fiscal Year to date 2009	2,413,269,800.00		165,388,214.00			248,110,052.50	5,187,151.50	61,506,925.00	43,642,141.00			167,153,088.45			38,011,855.00	40,159,317.50	4,723,828.00	3,187,152,372.95	100.0%