



*WEEKLY SALES SUMMARY*

Unaudited

**Week Ending: 07/18/2009**

Texas Lottery Commission  
Fiscal Year to Date Sales Comparison  
Unaudited

Through the week ending 07/18/2009 (46 weeks)

Sales by Game	FY 2007 *	FY 2008 **	FY 2009	\$ Change		% Change	
				FY 2009 to FY 2007	FY 2009 to FY 2008	FY 2009 to FY 2007	FY 2009 to FY 2008
Instants	\$ 2,554,273,169	\$ 2,479,141,391	\$ 2,465,768,740	\$ -88,504,429	\$ -13,372,651	-3.5%	-0.5%
Lotto Texas	209,505,768	179,643,405	169,673,271	-39,832,497	-9,970,134	-19.0%	-5.5%
Pick 3	278,485,394	254,311,681	253,151,229	-25,334,166	-1,160,452	-9.1%	-0.5%
Pick 3 Sum It Up	-	5,768,850	5,291,201	5,291,201	-477,649	-	-8.3%
Cash 5	77,095,385	67,174,672	62,791,839	-14,303,546	-4,382,833	-18.6%	-6.5%
Texas Two Step	43,404,675	42,937,406	44,427,954	1,023,279	1,490,548	2.4%	3.5%
Mega Millions	154,969,287	153,853,560	169,985,064	15,015,777	16,131,504	9.7%	10.5%
Megaplier	36,763,592	36,442,590	38,772,608	2,009,016	2,330,018	5.5%	6.4%
Daily 4	-	37,472,594	41,103,878	41,103,878	3,631,285	-	9.7%
Daily 4 Sum It Up	-	7,667,184	4,823,870	4,823,870	-2,843,314	-	-37.1%
<b>Total</b>	<b>\$ 3,354,497,270</b>	<b>\$ 3,264,413,332</b>	<b>\$ 3,255,789,653</b>	<b>\$ -98,707,617</b>	<b>\$ -8,623,678</b>	<b>-2.9%</b>	<b>-0.3%</b>

\* 3 extra days in 2007    \*\* 2 extra days in 2008

Texas Lottery Commission  
Fiscal Year Over Year Change in Sales  
Unaudited  
FY 2009 Compared to FY 2008

Week	FY 2009 Week Ending	INSTANT TICKETS				ON-LINE GAMES				TOTAL SALES			
		FY 2009	FY 2008	Difference	% change - Cumulative Sales	FY 2009	FY 2008	Difference	% change - Cumulative Sales	FY 2009	FY 2008	Difference	% change - Cumulative Sales
1	9/6/2008**	\$44,890,104	\$62,376,229	(\$17,486,125)	-28.0%	\$14,722,011	\$19,372,224	(\$4,650,213)	-24.0%	\$59,612,115	\$81,748,453	(\$22,136,338)	-27.1%
2	9/13/2008	\$46,309,551	\$52,458,866	(\$6,149,315)	-20.6%	\$13,704,860	\$16,926,163	(\$3,221,303)	-21.7%	\$60,014,411	\$69,385,029	(\$9,370,618)	-20.8%
3	9/20/2008	\$42,923,171	\$49,998,934	(\$7,075,763)	-18.6%	\$12,291,263	\$15,792,283	(\$3,501,020)	-21.8%	\$55,214,434	\$65,791,217	(\$10,576,783)	-19.4%
4	9/27/2008	\$47,042,801	\$49,894,175	(\$2,851,374)	-15.6%	\$14,222,339	\$14,800,514	(\$578,175)	-17.9%	\$61,265,140	\$64,694,689	(\$3,429,549)	-16.2%
5	10/4/2008	\$50,747,162	\$53,486,863	(\$2,739,701)	-13.5%	\$15,784,472	\$16,618,430	(\$833,958)	-15.3%	\$66,531,634	\$70,105,293	(\$3,573,659)	-14.0%
6	10/11/2008	\$49,763,789	\$50,918,020	(\$1,154,231)	-11.7%	\$15,622,498	\$15,601,410	\$21,088	-12.9%	\$65,386,287	\$66,519,430	(\$1,133,143)	-12.0%
7	10/18/2008	\$49,299,053	\$50,532,253	(\$1,233,200)	-10.5%	\$15,167,940	\$15,682,666	(\$514,726)	-11.6%	\$64,466,993	\$66,214,919	(\$1,747,926)	-10.7%
8	10/25/2008	\$49,977,581	\$50,347,450	(\$369,869)	-9.3%	\$14,525,843	\$15,586,516	(\$1,060,673)	-11.0%	\$64,503,424	\$65,933,966	(\$1,430,542)	-9.7%
9	11/1/2008	\$50,346,542	\$53,953,733	(\$3,607,191)	-9.0%	\$14,838,845	\$16,775,983	(\$1,937,139)	-11.1%	\$65,185,387	\$70,729,716	(\$5,544,330)	-9.5%
10	11/8/2008	\$54,860,087	\$53,635,090	\$1,224,997	-7.9%	\$16,057,069	\$15,912,791	\$144,278	-9.9%	\$70,917,156	\$69,547,881	\$1,369,275	-8.3%
11	11/15/2008	\$53,484,812	\$51,254,401	\$2,230,411	-6.8%	\$15,829,819	\$15,797,076	\$32,744	-9.0%	\$69,314,631	\$67,051,477	\$2,263,155	-7.3%
12	11/22/2008	\$52,806,511	\$50,897,817	\$1,908,694	-5.9%	\$16,460,748	\$15,801,720	\$659,028	-7.9%	\$69,267,259	\$66,699,537	\$2,567,722	-6.4%
13	11/29/2008	\$52,199,741	\$53,913,115	(\$1,713,374)	-5.7%	\$17,397,576	\$17,055,505	\$342,072	-7.1%	\$69,597,317	\$70,968,620	(\$1,371,303)	-6.0%
14	12/6/2008	\$56,731,851	\$55,702,697	\$1,029,154	-5.1%	\$20,363,789	\$17,900,717	\$2,463,073	-5.5%	\$77,095,640	\$73,603,414	\$3,492,227	-5.2%
15	12/13/2008	\$54,109,617	\$53,703,516	\$406,101	-4.7%	\$22,952,228	\$17,820,841	\$5,131,387	-3.0%	\$77,061,845	\$71,524,357	\$5,537,488	-4.3%
16	12/20/2008	\$55,777,328	\$57,592,769	(\$1,815,441)	-4.6%	\$15,833,517	\$17,436,233	(\$1,602,716)	-3.4%	\$71,610,845	\$75,029,002	(\$3,418,157)	-4.3%
17	12/27/2008	\$57,597,885	\$57,696,003	(\$98,118)	-4.3%	\$15,851,771	\$14,743,680	\$1,108,091	-2.9%	\$73,449,656	\$72,439,683	\$1,009,973	-4.0%
18	1/3/2009	\$57,582,115	\$57,935,952	(\$353,837)	-4.1%	\$16,900,028	\$15,704,450	\$1,195,578	-2.3%	\$74,482,143	\$73,640,402	\$841,741	-3.7%
19	1/10/2009	\$54,250,945	\$55,360,542	(\$1,109,597)	-4.0%	\$16,203,220	\$15,691,540	\$511,680	-2.0%	\$70,454,165	\$71,052,082	(\$597,917)	-3.5%
20	1/17/2009	\$51,625,339	\$54,920,166	(\$3,294,827)	-4.1%	\$15,701,605	\$16,259,669	(\$558,064)	-2.1%	\$67,326,944	\$71,179,835	(\$3,852,891)	-3.6%
21	1/24/2009	\$52,789,573	\$54,439,890	(\$1,650,317)	-4.1%	\$15,897,473	\$16,691,724	(\$794,251)	-2.2%	\$68,687,046	\$71,131,614	(\$2,444,568)	-3.6%
22	1/31/2009	\$55,453,471	\$57,464,382	(\$2,010,911)	-4.0%	\$16,908,272	\$17,968,227	(\$1,059,955)	-2.4%	\$72,361,743	\$75,432,609	(\$3,070,866)	-3.7%
23	2/7/2009	\$62,247,711	\$60,715,019	\$1,532,692	-3.7%	\$18,354,314	\$20,097,338	(\$1,743,025)	-2.7%	\$80,602,025	\$80,812,357	(\$210,333)	-3.5%
24	2/14/2009	\$60,509,056	\$57,093,143	\$3,415,913	-3.3%	\$19,218,078	\$22,179,908	(\$2,961,831)	-3.3%	\$79,727,134	\$79,273,051	\$454,083	-3.3%
25	2/21/2009	\$59,194,623	\$57,627,047	\$1,567,576	-3.0%	\$21,098,199	\$27,230,539	(\$6,132,340)	-4.5%	\$80,292,822	\$84,857,586	(\$4,564,764)	-3.4%
26	2/28/2009	\$58,857,216	\$55,591,667	\$3,265,549	-2.7%	\$24,116,924	\$17,016,118	\$7,100,806	-2.8%	\$82,974,140	\$72,607,785	\$10,366,355	-2.7%
27	3/7/2009	\$59,552,257	\$56,837,481	\$2,714,776	-2.4%	\$23,995,136	\$16,690,193	\$7,304,943	-1.1%	\$83,547,393	\$73,527,674	\$10,019,719	-2.1%
28	3/14/2009	\$53,754,084	\$54,587,112	(\$833,028)	-2.4%	\$18,769,831	\$16,448,165	\$2,321,667	-0.6%	\$72,523,915	\$71,035,277	\$1,488,639	-1.9%
29	3/21/2009	\$52,581,107	\$53,098,937	(\$517,830)	-2.3%	\$15,903,038	\$16,639,184	(\$736,146)	-0.7%	\$68,484,145	\$69,738,121	(\$1,253,976)	-1.9%
30	3/28/2009	\$52,560,961	\$53,933,689	(\$1,372,728)	-2.3%	\$16,094,933	\$17,698,625	(\$1,603,692)	-1.0%	\$68,655,894	\$71,632,314	(\$2,976,420)	-2.0%
31	4/4/2009	\$56,249,759	\$57,598,982	(\$1,349,223)	-2.3%	\$17,357,002	\$17,665,411	(\$308,409)	-1.0%	\$73,606,761	\$75,264,393	(\$1,657,632)	-2.0%
32	4/11/2009	\$54,440,987	\$53,954,185	\$486,802	-2.2%	\$17,660,600	\$15,860,784	\$1,799,816	-0.7%	\$72,101,587	\$69,814,969	\$2,286,618	-1.9%
33	4/18/2009	\$52,755,834	\$53,946,736	(\$1,190,902)	-2.2%	\$18,469,585	\$16,452,676	\$2,016,909	-0.3%	\$71,225,419	\$70,399,412	\$826,007	-1.8%
34	4/25/2009	\$51,450,968	\$51,533,006	(\$82,038)	-2.2%	\$20,216,898	\$16,873,949	\$3,342,950	0.3%	\$71,667,866	\$68,406,955	\$3,260,912	-1.6%
35	5/2/2009	\$52,327,090	\$53,250,568	(\$923,478)	-2.2%	\$23,520,573	\$18,202,103	\$5,318,471	1.2%	\$75,847,663	\$71,452,671	\$4,394,993	-1.4%
36	5/9/2009	\$53,214,412	\$54,060,849	(\$846,437)	-2.1%	\$16,241,207	\$18,422,562	(\$2,181,355)	0.8%	\$69,455,619	\$72,483,411	(\$3,027,792)	-1.4%
37	5/16/2009	\$50,785,227	\$54,010,641	(\$3,225,414)	-2.2%	\$15,990,544	\$20,728,360	(\$4,737,816)	0.0%	\$66,775,771	\$74,739,001	(\$7,963,230)	-1.7%
38	5/23/2009	\$56,567,077	\$50,377,032	\$6,190,045	-1.9%	\$15,874,447	\$15,461,384	\$413,063	0.1%	\$72,441,524	\$65,838,416	\$6,603,108	-1.4%
39	5/30/2009	\$55,359,239	\$49,545,080	\$5,814,159	-1.6%	\$16,040,196	\$15,175,370	\$864,826	0.2%	\$71,399,435	\$64,720,450	\$6,678,985	-1.1%
40	6/6/2009	\$60,250,125	\$53,702,986	\$6,547,139	-1.2%	\$16,301,599	\$15,982,166	\$319,434	0.2%	\$76,551,724	\$69,685,152	\$6,866,573	-0.9%

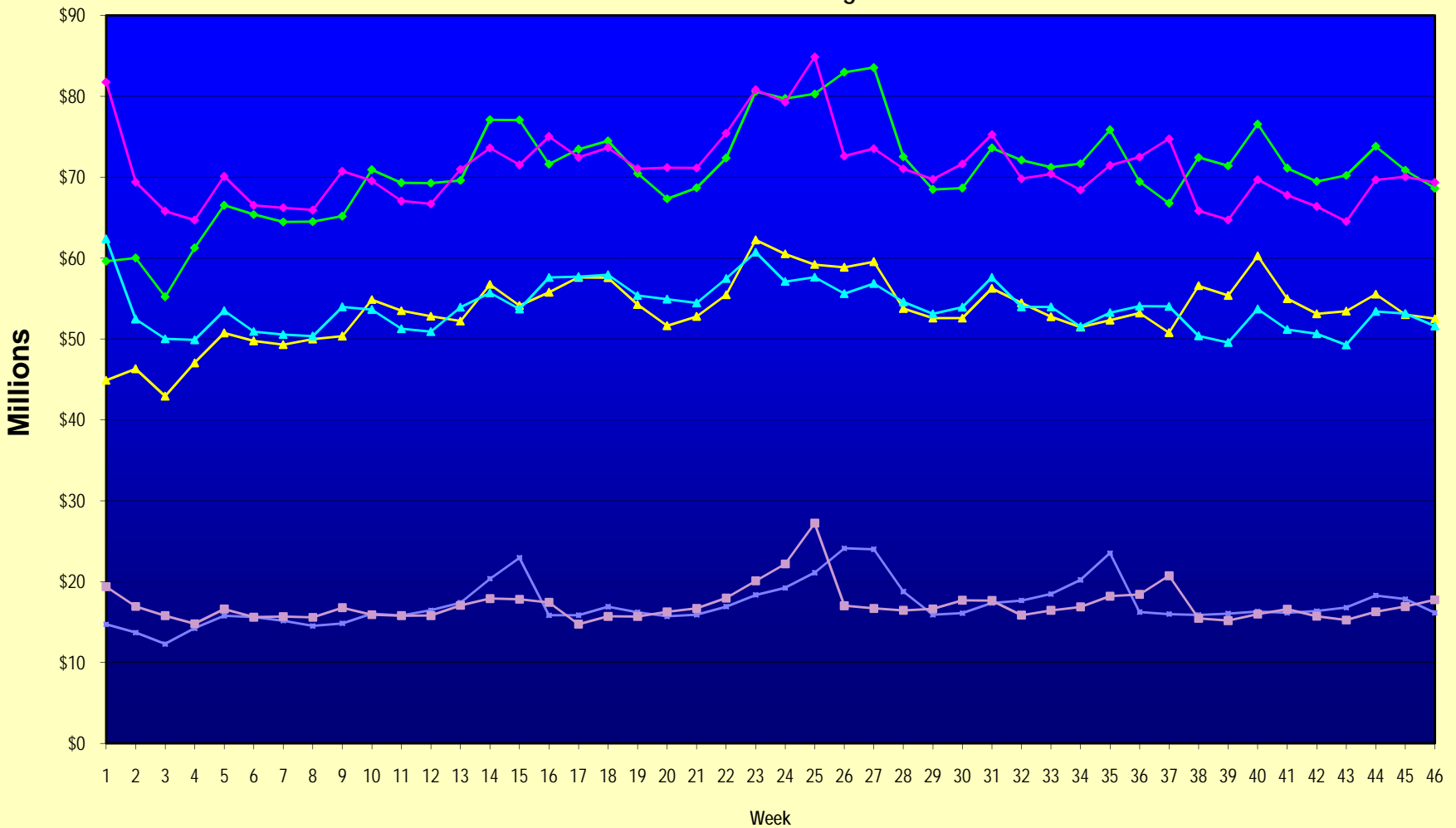
Note: Week 1 is not a full week of sales as this report is prepared on a Fiscal Year basis.

Texas Lottery Commission  
Fiscal Year Over Year Change in Sales  
Unaudited  
FY 2009 Compared to FY 2008

Week	FY 2009 Week Ending	INSTANT TICKETS				ON-LINE GAMES				TOTAL SALES			
		FY 2009	FY 2008	Difference	% change - Cumulative Sales	FY 2009	FY 2008	Difference	% change - Cumulative Sales	FY 2009	FY 2008	Difference	% change - Cumulative Sales
41	6/13/2009	\$54,979,517	\$51,171,483	\$3,808,034	-1.0%	\$16,143,215	\$16,589,087	(\$445,872)	0.2%	\$71,122,732	\$67,760,570	\$3,362,162	-0.7%
42	6/20/2009	\$53,109,433	\$50,650,362	\$2,459,071	-0.9%	\$16,357,924	\$15,728,484	\$629,440	0.3%	\$69,467,357	\$66,378,846	\$3,088,511	-0.6%
43	6/27/2009	\$53,431,083	\$49,258,266	\$4,172,817	-0.7%	\$16,786,203	\$15,250,905	\$1,535,298	0.5%	\$70,217,286	\$64,509,171	\$5,708,115	-0.4%
44	7/4/2009	\$55,518,615	\$53,393,355	\$2,125,260	-0.6%	\$18,292,421	\$16,270,619	\$2,021,802	0.7%	\$73,811,036	\$69,663,974	\$4,147,062	-0.3%
45	7/11/2009	\$53,004,390	\$53,127,756	(\$123,366)	-0.6%	\$17,842,530	\$16,914,922	\$927,608	0.8%	\$70,846,920	\$70,042,678	\$804,242	-0.2%
46	7/18/2009	\$52,498,940	\$51,593,146	\$905,794	-0.5%	\$16,138,341	\$17,752,738	(\$1,614,397)	0.6%	\$68,637,281	\$69,345,884	(\$708,603)	-0.3%
47	7/25/2009		\$49,902,181				\$16,706,145				\$66,608,326		
48	8/1/2009		\$49,605,420				\$16,254,383				\$65,859,803		
49	8/8/2009		\$50,961,907				\$16,770,496				\$67,732,403		
50	8/15/2009		\$49,452,511				\$16,749,487				\$66,201,998		
51	8/22/2009		\$49,249,518				\$17,286,302				\$66,535,820		
52	8/29/2009		\$49,468,928				\$18,109,997				\$67,578,925		
53	9/5/2009		\$6,054,239				\$493,109				\$6,547,348		
Total thru Current Week		\$2,465,768,740	\$2,479,141,391	(\$13,372,651)	-0.5%	\$790,020,913	\$785,271,941	\$4,748,973	0.6%	\$3,255,789,653	\$3,264,413,332	(\$8,623,678)	-0.3%
Fiscal Year Total		\$2,465,768,740	\$2,783,836,095			\$790,020,913	\$887,641,858			\$3,255,789,653	\$3,671,477,953		

\*\* FY 2009 includes 6 days; FY 2008 includes 8 days  
FY 2009 average daily sales are \$9,242,258. Two days at average daily sales are \$18,484,516.

### Texas Lottery Commission Fiscal Year Over Year Change in Sales



Note: Week 1 is not a full week of sales as this report is prepared on a Fiscal Year basis.

Texas Lottery Commission  
Instant Tickets by Price Point  
Sales, Prize Expense, Sales Contribution and Payout Percentage With Year Over Year Changes  
Unaudited

Fiscal Year	Price Point	# of Active Games	FY Sales	% of Instant Ticket Sales	Year over Year Change in Sales	FY Prize Expense	Year over Year Change in Prize Expense	FY Sales Contribution	Year over Year Change in Contribution	Average Prize Payout %	Year over Year Change in Payout %
2008	\$1.00	47	204,789,353	8.3%		123,502,171		81,287,182		60.3%	0.4%
thru	\$2.00	55	417,830,192	16.9%		272,963,141		144,867,051		65.3%	0.7%
7/19/2008	\$3.00	18	226,031,142	9.1%		148,601,371		77,429,771		65.7%	-0.1%
	\$5.00	49	682,857,436	27.5%		463,874,387		218,983,049		67.9%	-0.1%
	\$7.00	13	139,412,742	5.6%		94,810,209		44,602,533		68.0%	0.1%
	\$10.00	20	370,321,696	14.9%		259,060,115		111,261,581		70.0%	-0.8%
	\$20.00	9	195,152,560	7.9%		140,159,959		54,992,601		71.8%	-0.2%
	\$25.00	2	54,161,850	2.2%		39,325,435		14,836,415		72.6%	0.3%
	\$30.00	3	54,467,070	2.2%		39,430,061		15,037,009		72.4%	0.2%
	\$50.00	3	134,117,350	5.4%		96,773,540		37,343,810		72.2%	0.0%
<b>Total</b>		<b>219</b>	<b>\$2,479,141,391</b>			<b>\$1,678,500,388</b>		<b>\$800,641,003</b>		<b>67.7%</b>	<b>0.3%</b>
2009	\$1.00	45	211,424,850	8.6%		127,167,290		84,257,560		60.1%	0.1%
thru	\$2.00	42	404,694,053	16.4%		263,663,330		141,030,723		65.2%	-0.2%
7/18/2009	\$3.00	18	256,333,569	10.4%		168,130,346		88,203,223		65.6%	-0.2%
	\$5.00	48	754,456,292	30.6%		513,386,597		241,069,695		68.0%	0.2%
	\$7.00	8	119,904,211	4.9%		81,544,719		38,359,492		68.0%	0.0%
	\$10.00	21	340,905,510	13.8%		238,558,763		102,346,747		70.0%	0.0%
	\$20.00	9	259,407,900	10.5%		188,923,989		70,483,911		72.8%	1.5%
	\$25.00	1	2,372,325	0.1%		1,725,527		646,798		72.7%	0.2%
	\$30.00	3	10,023,630	0.4%		7,263,494		2,760,136		72.5%	0.1%
	\$50.00	4	106,246,400	4.3%		78,884,089		27,362,311		74.2%	2.9%
<b>Total</b>		<b>199</b>	<b>\$2,465,768,740</b>			<b>\$1,669,248,144</b>		<b>\$796,520,596</b>		<b>67.7%</b>	<b>0.0%</b>
Variance	\$1.00	-2	6,635,497		3.2%	3,665,119	3.0%	2,970,378	3.7%	-0.16%	
2009 to	\$2.00	-13	-13,136,139		-3.1%	-9,299,811	-3.4%	-3,836,328	-2.6%	-0.18%	
2008	\$3.00	0	30,302,427		13.4%	19,528,975	13.1%	10,773,452	13.9%	-0.15%	
	\$5.00	-1	71,598,856		10.5%	49,512,210	10.7%	22,086,646	10.1%	0.12%	
	\$7.00	-5	-19,508,531		-14.0%	-13,265,490	-14.0%	-6,243,041	-14.0%	0.00%	
	\$10.00	1	-29,416,186		-7.9%	-20,501,351	-7.9%	-8,914,835	-8.0%	0.02%	
	\$20.00	0	64,255,340		32.9%	48,764,030	34.8%	15,491,310	28.2%	1.01%	
	\$25.00	-1	-51,789,525		-95.6%	-37,599,908	-95.6%	-14,189,617	-95.6%	0.13%	
	\$30.00	0	-44,443,440		-81.6%	-32,166,567	-81.6%	-12,276,873	-81.6%	0.07%	
	\$50.00	1	-27,870,950		-20.8%	-17,889,450	-18.5%	-9,981,500	-26.7%	2.09%	
<b>Total</b>		<b>-20</b>	<b>-\$13,372,651</b>		<b>-0.5%</b>	<b>-\$9,252,244</b>	<b>-0.6%</b>	<b>-\$4,120,407</b>	<b>-0.5%</b>	<b>-0.01%</b>	

Texas Lottery Commission  
**Instant Tickets by Price Point**  
**Sales, Prize Expense, Sales Contribution and Payout Percentage With Year Over Year Changes**  
 Unaudited

Notes - Instant Ticket Variances

		FY 2009		FY 2008		Difference
Sales	\$1 - \$7		\$1,746,812,975		\$1,670,920,865	\$75,892,110
Prize Exp.	\$1 - \$7		\$1,153,892,281		\$1,103,751,278	\$50,141,003
Sales Cont.	\$1 - \$7		\$592,920,694		\$567,169,587	\$25,751,107
Prize Exp. %	\$1 - \$7		66.1%		66.1%	0.0%
		FY 2009		FY 2008		Difference
Sales	\$10 - \$50		\$718,955,765		\$808,220,526	-\$89,264,761
Prize Exp.	\$10 - \$50		\$515,355,862		\$574,749,110	-\$59,393,247
Sales Cont.	\$10 - \$50		\$203,599,903		\$233,471,416	-\$29,871,514
Prize Exp. %	\$10 - \$50		71.7%		71.1%	0.6%
		FY 2009		FY 2008		Difference
Sales	Instant		\$2,465,768,740		\$2,479,141,391	-\$13,372,651
Prize Exp.	Instant		\$1,669,248,144		\$1,678,500,388	-\$9,252,244
Sales Cont.	Instant		\$796,520,596		\$800,641,003	-\$4,120,407
Prize Exp. %	Instant		67.7%		67.7%	0.0%

		FY 2009		FY 2008		Difference
Sales	\$1 - \$10		\$2,087,718,485		\$2,041,242,561	\$46,475,924
Prize Exp.	\$1 - \$10		\$1,392,451,045		\$1,362,811,393	\$29,639,652
Sales Cont.	\$1 - \$10		\$695,267,440		\$678,431,168	\$16,836,272
Prize Exp. %	\$1 - \$10		66.7%		66.8%	-0.1%
		FY 2009		FY 2008		Difference
Sales	\$20 - \$50		\$378,050,255		\$437,898,830	-\$59,848,575
Prize Exp.	\$20 - \$50		\$276,797,099		\$315,688,995	-\$38,891,896
Sales Cont.	\$20 - \$50		\$101,253,156		\$122,209,835	-\$20,956,679
Prize Exp. %	\$20 - \$50		73.2%		72.1%	1.1%
		FY 2009		FY 2008		Difference
Sales	Instant		\$2,465,768,740		\$2,479,141,391	-\$13,372,651
Prize Exp.	Instant		\$1,669,248,144		\$1,678,500,388	-\$9,252,244
Sales Cont.	Instant		\$796,520,596		\$800,641,003	-\$4,120,407
Prize Exp. %	Instant		67.7%		67.7%	0.0%

Texas Lottery Commission  
**Weekly Sales Summary**  
**& Comparison to Previous Week**  
 Unaudited

	Week Ending 07/18/2009		Week Ending 07/11/2009			
	<u>THIS WEEK</u>	% of Sales	<u>LAST WEEK</u>	% of Sales	<u>\$ change</u>	<u>% change</u>
Total Sales	<u>\$68,637,281</u>		<u>\$70,846,920</u>		<u>-\$2,209,639</u>	-3.12%
Instant Tickets	<u>\$52,498,940</u>	76.5%	<u>\$53,004,390</u>	74.8%	<u>-\$505,450</u>	-0.95%
Lotto Texas	\$4,285,057	6.2%	\$4,220,775	6.0%	\$64,282	1.52%
Pick 3	\$5,041,176	7.3%	\$5,261,294	7.4%	-\$220,118	-4.18%
Pick 3 Sum It Up	\$104,049	0.2%	\$108,424	0.2%	-\$4,375	-4.03%
Cash 5	\$1,284,914	1.9%	\$1,309,778	1.8%	-\$24,864	-1.90%
Texas Two Step	\$785,813	1.1%	\$997,751	1.4%	-\$211,938	-21.24%
Mega Millions	\$2,831,976	4.1%	\$3,994,574	5.6%	-\$1,162,598	-29.10%
Megaplier	\$760,753	1.1%	\$883,721	1.2%	-\$122,968	-13.91%
Daily 4	\$944,561	1.4%	\$964,339	1.4%	-\$19,779	-2.05%
Daily 4 Sum It Up	<u>\$100,042</u>	0.1%	<u>\$101,875</u>	0.1%	<u>-\$1,833</u>	-1.80%
Total Online Sales	<u>\$16,138,341</u>		<u>\$17,842,530</u>		<u>-\$1,704,189</u>	-9.55%

\* Totals may not sum due to rounding.



Texas Lottery Commission  
Weekly Sales Summary  
Unaudited

INSTANT TICKETS  
TOP TEN SELLING GAMES

For the Week Ending : 07/18/2009

Rank	Price Point	Game	Sales (Millions)
1	\$ 20	\$500,000,000 BLOCKBUSTER	\$ 8.175
2	\$ 5	PURE GOLD	\$ 3.397
3	\$ 10	WILD 10'S	\$ 2.324
4	\$ 10	SUMMER SPECTACULAR	\$ 2.110
5	\$ 5	CADILLAC ESCALADE CASH	\$ 2.029
6	\$ 50	\$140,000,000 EXTREME PAYOUT	\$ 2.015
7	\$ 5	CASH VAULT	\$ 1.789
8	\$ 10	SET FOR LIFE	\$ 1.768
9	\$ 3	BONUS CASHWORD	\$ 1.676
10	\$ 2	BREAK THE BANK	\$ 1.532

Texas Lottery Commission  
Prize Payout Tracking Report  
Unaudited

Through Week Ending 07/18/2009

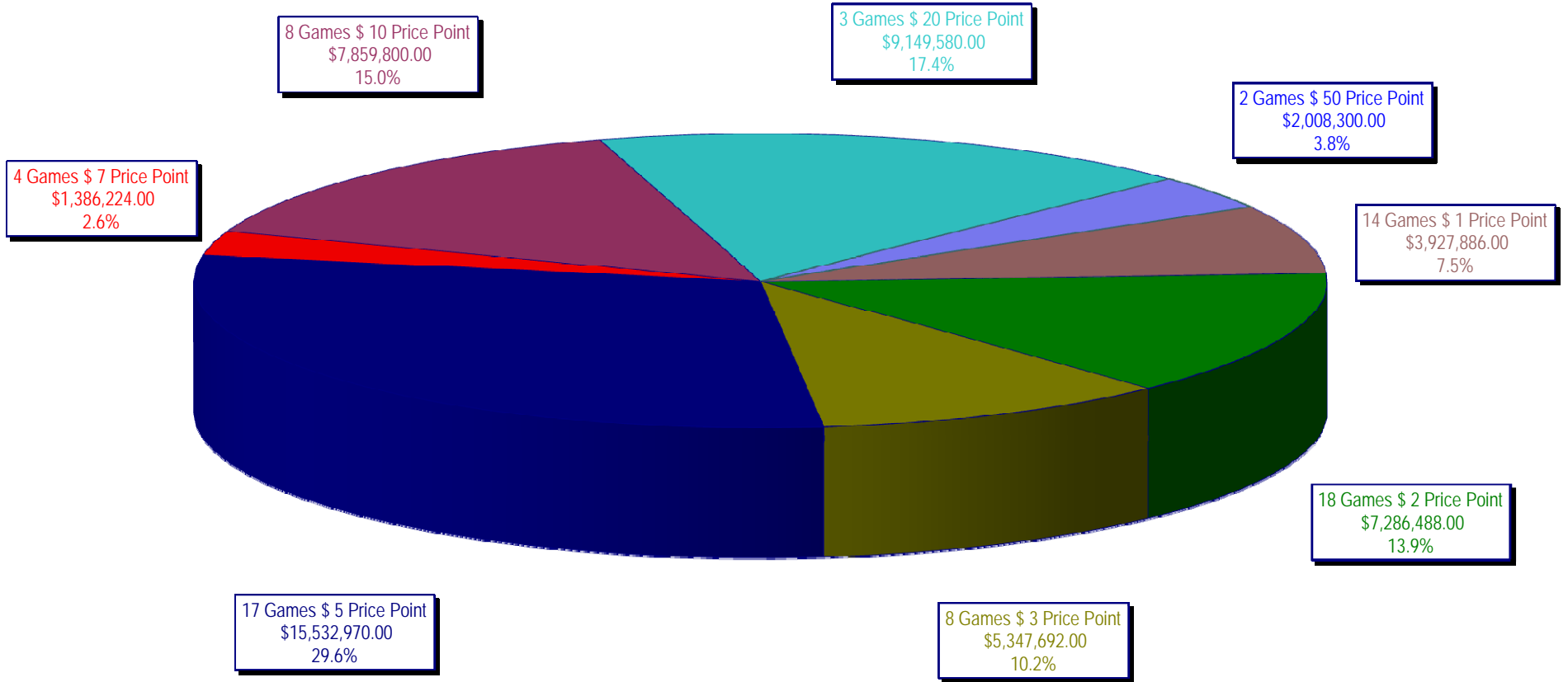
On-Line Sales

		FY Sales Through Week Ending 7/18/2009		FY Prize Expense Through Week Ending 7/18/2009	Actual* Prize Payout	Base Payout (Prize Pool)
Lotto	\$	169,673,271	\$	85,424,493	50.35%	50.00%
Pick 3		253,151,229		122,329,940	48.32%	50.00%
Pick 3 Sum It Up		5,291,201		2,387,020	45.11%	50.00%
Cash 5		62,791,839		31,501,150	50.17%	50.00%
Texas Two-Step		44,427,954		23,409,755	52.69%	50.00%
Mega Millions		169,985,064		85,129,201	50.08%	50.00%**
Megaplier		38,772,608		19,776,196	51.01%	N/A
Daily 4		41,103,878		20,511,500	49.90%	50.00%
Daily 4-Sum It Up		4,823,870		2,055,221	42.61%	50.00%
<b>Totals</b>	\$	<b>790,020,913</b>	\$	<b>392,524,476</b>	<b>49.69%</b>	

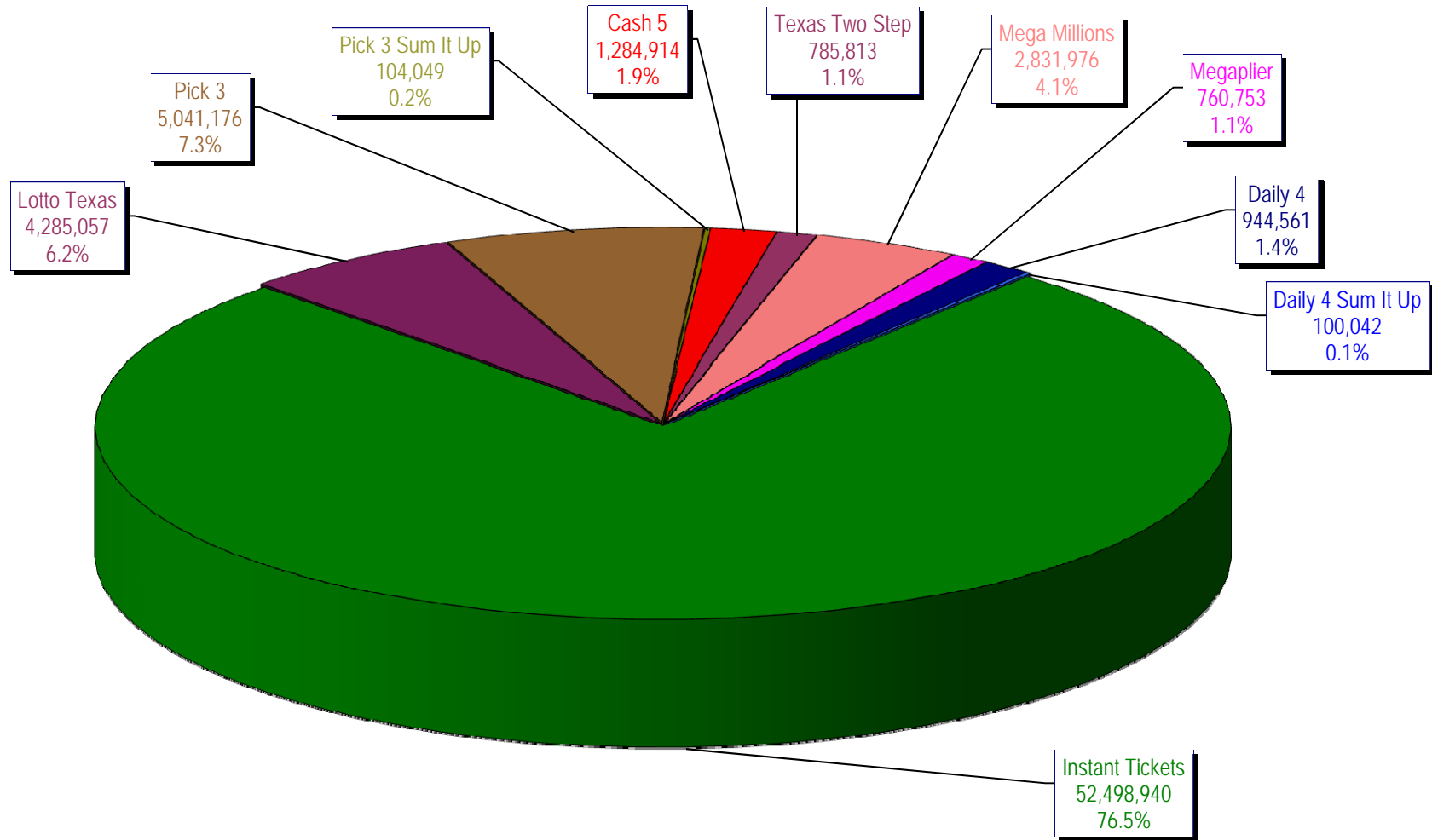
\* Before Unclaimed Prizes

\*\* Estimated; depends on # of guaranteed prizes won in Texas

Texas Lottery Commission  
Instant Ticket Sales  
For the Week Ending 07/18/2009  
(Unaudited)



Texas Lottery Commission  
**All Game Sales**  
For the Week Ending 07/18/2009  
(Unaudited)



Texas Lottery Commission - Weekly Sales Summary for FY 2009 (Unaudited)

Week Ended	Instant Games	New Games & Dates	Lotto Texas	Jackpot		Pick 3	Pick 3 Sum It Up	Cash 5	Texas Two Step	Jackpot		Mega Millions	Jackpot		Megaplier	Daily 4	Daily 4 Sum It Up	Total	Per Cap.
				W	S					M/T	TH/F		T	F					
9/6/2008	50,944,343.00	1108 (\$2,N), 1088 (\$3, N) - 9/01/08	3,378,718.00	5	6	5,436,414.00	122,123.00	1,396,622.00	890,346.00	350	450	2,445,490.00	12	16	649,090.00	786,482.50	109,834.00	66,159,462.50	2.77
9/13/2008	46,309,551.00	1109 (\$1,N), 1098 (\$5, N) - 9/08/08	3,020,089.00	7	8	4,705,585.50	105,899.00	1,279,412.00	856,199.00	600	200	2,327,214.00	24	12	617,672.00	696,633.00	96,156.50	60,014,411.00	2.51
9/20/2008	42,923,171.00	0	3,054,093.00	9	10	4,121,734.50	90,718.00	1,155,350.00	637,792.00	225	250	1,978,127.00	15	12	540,225.00	627,210.00	86,013.50	55,214,434.00	2.31
9/27/2008	47,042,801.00	1111 (\$2,N), 1099 (\$5, N) - 9/22/08	3,427,671.00	11	12	4,821,563.00	103,189.50	1,288,062.00	834,307.00	275	425	2,322,862.00	16	24	617,085.00	709,741.50	97,858.00	61,265,140.00	2.56
10/4/2008	50,747,162.00	1113 (\$1,N) 9/29/08	3,675,683.00	13	14	5,305,711.00	116,332.50	1,369,040.00	1,074,874.00	525	650	2,671,927.00	32	42	693,845.00	770,782.50	106,277.00	66,531,634.00	2.78
10/11/2008	49,763,789.00	0	3,732,365.00	15	16	5,287,094.00	114,665.50	1,370,334.00	1,305,250.00	800	975	2,306,070.00	12	16	622,120.00	778,204.00	106,395.00	65,386,286.50	2.74
10/18/2008	49,299,053.00	1117 (\$3,N), 1118 (\$20,N) - 10/13/08	3,780,438.00	17	18	5,149,258.00	109,530.00	1,355,601.00	741,849.00	200	200	2,500,644.00	23	32	652,198.00	776,366.00	102,056.00	64,466,993.00	2.70
10/25/2008	49,977,581.00	1119 (\$1,N), 1120 (\$5,N) - 10/20/08	3,210,762.00	4	5	5,099,671.00	107,104.50	1,339,079.00	789,649.00	225	275	2,456,965.00	42	12	641,206.00	778,434.00	102,972.50	64,503,424.00	2.70
11/1/2008	50,346,542.00	1121 (\$2,N), 1122 (\$10,N) - 10/27/08	3,325,641.00	6	7	5,234,124.00	109,983.00	1,339,046.00	946,035.00	375	475	2,347,596.00	16	23	626,235.00	805,572.00	104,612.50	65,185,386.50	2.73
11/8/2008	54,860,087.00	1123 (\$3,N), 1124 (\$7,N) - 11/03/08; 1103 (\$3,N) - 11/05/08; 1063 (\$3,N) - 11/07/08	3,290,417.00	4	5	5,686,701.00	118,495.00	1,397,985.00	1,158,101.00	625	750	2,729,302.50	31	42	692,662.00	871,230.00	112,175.50	70,917,156.00	2.97
11/15/2008	53,484,812.00	1125 (\$1, N), 1126 (\$5,N) - 11/10/08	3,336,934.00	6	7	5,459,984.00	112,884.00	1,366,024.00	766,955.00	200	225	3,102,251.00	51	62	749,736.00	830,957.00	104,094.00	69,314,631.00	2.90
11/22/2008	52,806,511.00	0	3,452,481.00	8	9	5,329,591.00	108,861.50	1,358,271.00	743,950.00	200	200	3,666,517.00	73	86	847,201.00	849,077.50	104,797.50	69,267,258.50	2.90
11/29/2008	52,199,741.00	1127 (\$2,N), 1128 (\$5,N) - 11/24/08	3,585,374.00	10	11	5,340,783.50	111,443.00	1,315,233.00	686,077.00	200	225	4,441,715.00	96	111	968,906.00	845,475.50	102,569.00	69,597,317.00	2.91
12/6/2008	56,731,851.00	0	3,794,991.00	12	13	5,752,593.00	121,663.50	1,416,446.00	780,328.00	250	200	6,238,355.00	128	146	1,270,214.00	881,841.50	107,357.00	77,095,640.00	3.23
12/13/2008	54,109,617.00	1129 (\$1, N) - 12/08/08	3,315,658.00	4	5	5,580,770.00	114,295.50	1,384,858.00	766,893.00	225	250	9,150,536.00	170	207	1,691,121.00	846,176.50	101,919.50	77,061,844.50	3.22
12/20/2008	55,777,328.00	1104 (\$2,N), 1105 (\$5,N), 1106 (\$10,N) - 12/15/08	3,432,340.00	6	7	5,741,120.00	116,075.50	1,401,805.00	741,945.00	200	200	2,736,234.00	12	16	687,875.00	871,579.50	104,543.00	71,610,845.00	3.00
12/27/2008	57,597,885.00	1077 (\$1,N), 1110 (\$1,N) - 12/22/08	3,582,169.00	8	4	5,628,081.50	115,323.00	1,340,590.00	708,906.00	225	250	2,842,167.00	22	29	706,042.00	828,346.00	100,146.00	73,449,655.50	3.07
1/3/2009	57,582,115.00	0	3,784,763.00	5	6	5,690,220.50	120,519.50	1,406,807.00	934,000.00	325	525	3,190,457.00	37	46	780,850.00	885,674.00	106,736.50	74,482,142.50	3.12
1/10/2009	54,250,945.00	1135 (\$2,N), 1136 (\$5,N) - 1/5/09	3,582,400.00	7	8	5,476,890.00	116,674.50	1,403,531.00	1,267,847.00	675	900	2,701,275.00	12	16	681,574.00	868,919.00	104,109.50	70,454,165.00	2.95
1/17/2009	51,625,339.00	1137 (\$1,N), 1138 (\$3,N) - 1/12/09	3,668,302.50	9	10	5,443,159.00	112,605.00	1,387,958.00	778,563.00	200	200	2,683,707.00	22	12	675,416.00	852,987.00	98,907.50	67,326,944.00	2.82
1/24/2009	52,789,573.00	1115 (\$2,N), 1116 (\$5,N) - 1/19/09	3,723,835.50	11	12	5,514,547.50	115,827.50	1,376,695.00	860,483.00	225	325	2,692,611.00	16	21	676,936.00	836,996.00	99,541.00	68,687,045.50	2.87
1/31/2009	55,453,471.00	1080 (\$1,N), 1024 (\$20,R) - 1/26/09; 1062 (\$5,N) - 1/28/09	3,837,299.00	13	14	5,700,714.50	121,794.50	1,403,756.00	1,070,879.00	450	600	3,002,883.00	30	40	731,253.00	925,937.50	113,755.50	72,361,743.00	3.03
2/7/2009	62,247,711.00	1035 (\$2,N), 1144 (\$5,N), 1058 (\$10, N) - 2/2/09	4,092,117.00	15	16	6,336,717.00	134,543.00	1,481,812.00	842,746.00	200	225	3,509,032.00	50	60	829,550.00	1,007,529.00	120,267.50	80,602,024.50	3.37
2/14/2009	60,509,056.00	1146 (\$7,N), 1089 (\$1,N) - 2/9/09	4,119,193.00	17	18	6,363,028.00	133,901.50	1,445,616.00	1,013,987.00	325	450	4,082,572.00	73	85	928,813.00	1,010,898.50	120,068.50	79,727,133.50	3.34
2/21/2009	59,194,623.00	1046 (\$2,N), 1140 (\$5,N) - 2/16/09	4,326,401.00	19	20	6,038,807.50	128,493.00	1,439,312.00	1,268,803.00	600	750	5,614,471.00	103	120	1,178,133.00	988,075.00	115,703.50	80,292,822.00	3.36
2/28/2009	58,857,216.00	1132 (\$10,N), 1149 (\$1,N) - 2/23/09	4,526,304.00	21	22	6,084,457.50	128,979.50	1,439,607.00	1,668,414.00	925	1,150	7,676,975.00	145	171	1,504,895.00	973,121.00	114,171.00	82,974,140.00	3.47

Texas Lottery Commission - Weekly Sales Summary for FY 2009 (Unaudited)

Week Ended	Instant Games	New Games & Dates	Lotto Texas	Jackpot		Pick 3	Pick 3 Sum It Up	Cash 5	Texas Two Step	Jackpot		Mega Millions	Jackpot		Megaplier	Daily 4	Daily 4 Sum It Up	Total	Per Cap.
				W	S					M/T	TH/F		T	F					
3/7/2009	59,552,257.00	0	4,928,440.00	23	25	6,133,789.00	128,599.00	1,487,185.00	1,984,358.00	1,350	1,600	6,898,457.00	212	12	1,349,427.00	971,644.50	113,236.00	83,547,392.50	3.50
3/14/2009	53,754,084.00	1139 (\$2.N), 1079 (\$5.N) - 3/09/09	4,752,592.00	26	28	5,850,166.00	120,684.50	1,418,127.00	2,112,571.00	1,900	2,150	2,782,204.00	16	26	698,214.00	925,615.00	109,657.50	72,523,915.00	3.03
3/21/2009	52,581,107.00	1107 (\$1.N), 1154 (\$3.N), 1057 (\$10.N) - 3/16/09; 1102 (\$2.N) - 3/19/09	3,437,818.00	4	5	5,776,041.50	117,294.00	1,399,720.00	880,620.00	200	225	2,595,785.00	12	16	653,517.00	934,185.00	108,057.50	68,484,145.00	2.87
3/28/2009	52,560,961.00	1130 (\$5.N), 1150 (\$10.N) - 3/23/09	3,486,731.00	6	7	5,633,454.50	114,269.50	1,381,550.00	901,673.00	300	200	2,845,499.00	24	34	701,971.00	925,093.50	104,691.50	68,655,894.00	2.87
4/4/2009	56,249,759.00	1151 (\$2.N), 1101 (\$50.N) - 3/30/09	3,746,083.00	8	9	5,893,043.50	122,332.00	1,429,598.00	940,614.00	225	300	3,321,274.00	43	54	794,282.00	998,042.00	111,733.50	73,606,761.00	3.08
4/11/2009	54,440,987.00	1153 (\$2.N) - 4/07/09; 1152 (\$3.N) - 4/08/09	3,594,176.00	10	4	5,893,551.00	120,491.50	1,394,879.00	933,807.00	425	200	3,772,700.00	65	78	857,890.00	987,127.50	105,977.50	72,101,586.50	3.02
4/18/2009	52,755,834.00	1145 (\$1.N), 1148 (\$5.N) - 4/13/09	3,462,217.00	5	6	5,627,572.00	117,123.50	1,374,682.00	829,493.00	225	200	4,960,982.00	92	109	1,040,136.00	957,161.00	100,218.50	71,225,419.00	2.98
4/25/2009	51,450,968.00	1051 (\$7.N) - 4/20/09	3,517,624.00	7	8	5,408,672.50	117,314.50	1,347,754.00	876,206.00	225	300	6,614,120.95	130	155	1,298,021.00	937,777.00	99,408.50	71,667,866.45	3.00
5/2/2009	52,327,090.00	1161 (\$1.N), 1081 (\$5.N) - 4/27/09	3,679,438.00	9	10	5,512,770.50	113,755.50	1,362,174.00	880,888.00	425	200	9,277,686.00	181	225	1,653,107.00	937,874.00	102,880.00	75,847,663.00	3.17
5/9/2009	53,214,412.00	0	3,554,635.00	11	4	5,603,106.00	118,185.50	1,389,454.00	823,436.00	225	200	2,961,748.00	12	17	718,169.00	967,592.00	104,881.00	69,455,618.50	2.91
5/16/2009	50,785,227.00	1131 (\$2.N), 1134 (\$5.N) - 5/11/09 1165 (\$1.N), 1114 (\$20.N) - 5/18/09; 1156 (\$1.N) - 5/19/09; 1153 (\$2.N) - 5/20/09	3,332,475.00	5	6	5,417,197.00	112,501.00	1,356,843.00	842,436.00	225	275	3,116,696.00	28	38	748,141.00	959,922.50	104,332.00	66,775,770.50	2.79
5/23/2009	56,567,077.00	1049 (\$3.N) - 5/25/09	3,425,065.00	7	8	5,363,150.50	111,143.50	1,356,979.00	1,061,946.00	400	525	2,790,741.00	12	16	694,815.00	967,375.50	103,231.00	72,441,523.50	3.03
5/30/2009	55,359,239.00	1112 (\$5.N) - 6/1/09	3,480,479.00	9	10	5,329,739.50	108,222.50	1,314,598.00	1,173,008.00	650	800	2,871,590.00	25	35	705,366.00	957,423.50	99,769.00	71,399,434.50	2.99
6/6/2009	60,250,125.00	1133 (\$1.N), 1162 (\$5.N) - 6/8/09	3,656,108.00	11	12	5,806,294.00	117,692.00	1,379,840.00	833,645.00	200	225	2,696,889.00	12	17	684,660.00	1,020,540.50	105,930.50	76,551,724.00	3.20
6/13/2009	54,979,517.00	1087 (\$2.N); 1166 (\$10.N) - 6/15/09	3,639,064.00	13	14	5,434,316.00	109,481.50	1,323,811.00	960,321.00	300	400	2,892,403.00	25	36	712,936.00	967,447.50	103,434.50	71,122,731.50	2.98
6/20/2009	53,109,433.00	1194 (\$5.N) - 6/22/09	3,722,083.00	15	16	5,298,164.50	106,370.50	1,295,187.00	914,417.00	525	200	3,203,712.00	46	57	763,056.00	955,438.50	99,495.00	69,467,356.50	2.91
6/27/2009	53,431,083.00	1173 (\$1.N); 1090 (\$10.N) - 06/29/09	3,826,811.00	17	18	5,294,301.50	105,363.00	1,280,460.00	779,414.00	225	200	3,619,796.00	68	81	829,739.00	951,028.50	99,289.50	70,217,285.50	2.94
7/4/2009	55,518,615.00	1155 (\$3.N); 1158 (\$5.N) - 07/06/09	3,978,976.00	19	20	5,365,381.00	109,234.50	1,301,272.00	834,396.00	225	275	4,619,366.00	94	113	987,368.00	990,473.50	105,953.50	73,811,035.50	3.09
7/11/2009	53,004,390.00	1171 (\$2.N); 1260 (\$10.N) - 07/13/09	4,220,775.00	21	22	5,261,293.50	108,423.50	1,309,778.00	997,751.00	375	500	3,994,574.00	133	12	883,721.00	964,339.00	101,874.50	70,846,919.50	2.96
7/18/2009	52,498,940.00		4,285,057.00	23	25	5,041,176.00	104,049.00	1,284,914.00	785,813.00	200	225	2,831,976.00	16	27	760,753.00	944,560.50	100,042.00	68,637,280.50	2.87
weekly change	-0.95%		1.52%			-4.18%	-4.03%	-1.90%	-21.24%			-29.10%			-13.91%	-2.05%	-1.80%	-3.12%	
	<b>SALES</b>		<b>SALES</b>			<b>SALES</b>	<b>SALES</b>	<b>SALES</b>	<b>SALES</b>			<b>SALES</b>			<b>SALES</b>	<b>SALES</b>	<b>SALES</b>	<b>SALES</b>	<b>% of Sales</b>
Startup to date	35,946,354,742.00		10,448,770,318.00			3,551,870,181.00	11,777,030.50	2,181,947,849.00	470,693,672.00			1,096,123,659.45			256,980,642.00	83,320,849.50	13,162,673.50	54,269,135,588.95	100.0%
Calendar Year to date	1,564,451,067.00		109,401,026.00			160,710,682.00	175,670.50	39,209,395.00	29,534,535.00			112,166,755.95			25,112,827.00	27,113,191.00	3,021,866.00	2,070,897,015.45	100.0%
Fiscal Year to date 2009	2,465,768,740.00		169,673,271.00			253,151,228.50	5,291,200.50	62,791,839.00	44,427,954.00			169,985,064.45			38,772,608.00	41,103,878.00	4,823,870.00	3,255,789,653.45	100.0%