



WEEKLY SALES SUMMARY

Unaudited

Week Ending: 07/25/2009

Texas Lottery Commission
Fiscal Year to Date Sales Comparison
Unaudited

Through the week ending 07/25/2009 (47 weeks)

Sales by Game	FY 2007 *	FY 2008 **	FY 2009	\$ Change		% Change	
				FY 2009 to FY 2007	FY 2009 to FY 2008	FY 2009 to FY 2007	FY 2009 to FY 2008
Instants	\$ 2,606,209,827	\$ 2,529,043,572	\$ 2,517,319,471	\$ -88,890,356	\$ -11,724,101	-3.4%	-0.5%
Lotto Texas	213,269,464	183,483,732	174,003,693	-39,265,771	-9,480,039	-18.4%	-5.2%
Pick 3	284,327,154	259,592,047	258,244,553	-26,082,602	-1,347,495	-9.2%	-0.5%
Pick 3 Sum It Up	-	5,888,104	5,394,038	5,394,038	-494,066	-	-8.4%
Cash 5	78,664,817	68,572,494	64,057,072	-14,607,745	-4,515,422	-18.6%	-6.6%
Texas Two Step	44,169,971	43,729,179	45,321,597	1,151,626	1,592,418	2.6%	3.6%
Mega Millions	157,694,142	157,416,936	173,142,570	15,448,428	15,725,634	9.8%	10.0%
Megaplier	37,472,174	37,276,770	39,613,678	2,141,504	2,336,908	5.7%	6.3%
Daily 4	-	38,240,580	42,067,896	42,067,896	3,827,317	-	10.0%
Daily 4 Sum It Up	-	7,778,244	4,923,954	4,923,954	-2,854,291	-	-36.7%
Total	\$ 3,421,807,549	\$ 3,331,021,658	\$ 3,324,088,521	\$ -97,719,028	\$ -6,933,136	-2.9%	-0.2%

* 3 extra days in 2007 ** 2 extra days in 2008

Texas Lottery Commission
Fiscal Year Over Year Change in Sales
Unaudited
FY 2009 Compared to FY 2008

Week	FY 2009 Week Ending	INSTANT TICKETS				ON-LINE GAMES				TOTAL SALES			
		FY 2009	FY 2008	Difference	% change - Cumulative Sales	FY 2009	FY 2008	Difference	% change - Cumulative Sales	FY 2009	FY 2008	Difference	% change - Cumulative Sales
1	9/6/2008**	\$44,890,104	\$62,376,229	(\$17,486,125)	-28.0%	\$14,722,011	\$19,372,224	(\$4,650,213)	-24.0%	\$59,612,115	\$81,748,453	(\$22,136,338)	-27.1%
2	9/13/2008	\$46,309,551	\$52,458,866	(\$6,149,315)	-20.6%	\$13,704,860	\$16,926,163	(\$3,221,303)	-21.7%	\$60,014,411	\$69,385,029	(\$9,370,618)	-20.8%
3	9/20/2008	\$42,923,171	\$49,998,934	(\$7,075,763)	-18.6%	\$12,291,263	\$15,792,283	(\$3,501,020)	-21.8%	\$55,214,434	\$65,791,217	(\$10,576,783)	-19.4%
4	9/27/2008	\$47,042,801	\$49,894,175	(\$2,851,374)	-15.6%	\$14,222,339	\$14,800,514	(\$578,175)	-17.9%	\$61,265,140	\$64,694,689	(\$3,429,549)	-16.2%
5	10/4/2008	\$50,747,162	\$53,486,863	(\$2,739,701)	-13.5%	\$15,784,472	\$16,618,430	(\$833,958)	-15.3%	\$66,531,634	\$70,105,293	(\$3,573,659)	-14.0%
6	10/11/2008	\$49,763,789	\$50,918,020	(\$1,154,231)	-11.7%	\$15,622,498	\$15,601,410	\$21,088	-12.9%	\$65,386,287	\$66,519,430	(\$1,133,143)	-12.0%
7	10/18/2008	\$49,299,053	\$50,532,253	(\$1,233,200)	-10.5%	\$15,167,940	\$15,682,666	(\$514,726)	-11.6%	\$64,466,993	\$66,214,919	(\$1,747,926)	-10.7%
8	10/25/2008	\$49,977,581	\$50,347,450	(\$369,869)	-9.3%	\$14,525,843	\$15,586,516	(\$1,060,673)	-11.0%	\$64,503,424	\$65,933,966	(\$1,430,542)	-9.7%
9	11/1/2008	\$50,346,542	\$53,953,733	(\$3,607,191)	-9.0%	\$14,838,845	\$16,775,983	(\$1,937,139)	-11.1%	\$65,185,387	\$70,729,716	(\$5,544,330)	-9.5%
10	11/8/2008	\$54,860,087	\$53,635,090	\$1,224,997	-7.9%	\$16,057,069	\$15,912,791	\$144,278	-9.9%	\$70,917,156	\$69,547,881	\$1,369,275	-8.3%
11	11/15/2008	\$53,484,812	\$51,254,401	\$2,230,411	-6.8%	\$15,829,819	\$15,797,076	\$32,744	-9.0%	\$69,314,631	\$67,051,477	\$2,263,155	-7.3%
12	11/22/2008	\$52,806,511	\$50,897,817	\$1,908,694	-5.9%	\$16,460,748	\$15,801,720	\$659,028	-7.9%	\$69,267,259	\$66,699,537	\$2,567,722	-6.4%
13	11/29/2008	\$52,199,741	\$53,913,115	(\$1,713,374)	-5.7%	\$17,397,576	\$17,055,505	\$342,072	-7.1%	\$69,597,317	\$70,968,620	(\$1,371,303)	-6.0%
14	12/6/2008	\$56,731,851	\$55,702,697	\$1,029,154	-5.1%	\$20,363,789	\$17,900,717	\$2,463,073	-5.5%	\$77,095,640	\$73,603,414	\$3,492,227	-5.2%
15	12/13/2008	\$54,109,617	\$53,703,516	\$406,101	-4.7%	\$22,952,228	\$17,820,841	\$5,131,387	-3.0%	\$77,061,845	\$71,524,357	\$5,537,488	-4.3%
16	12/20/2008	\$55,777,328	\$57,592,769	(\$1,815,441)	-4.6%	\$15,833,517	\$17,436,233	(\$1,602,716)	-3.4%	\$71,610,845	\$75,029,002	(\$3,418,157)	-4.3%
17	12/27/2008	\$57,597,885	\$57,696,003	(\$98,118)	-4.3%	\$15,851,771	\$14,743,680	\$1,108,091	-2.9%	\$73,449,656	\$72,439,683	\$1,009,973	-4.0%
18	1/3/2009	\$57,582,115	\$57,935,952	(\$353,837)	-4.1%	\$16,900,028	\$15,704,450	\$1,195,578	-2.3%	\$74,482,143	\$73,640,402	\$841,741	-3.7%
19	1/10/2009	\$54,250,945	\$55,360,542	(\$1,109,597)	-4.0%	\$16,203,220	\$15,691,540	\$511,680	-2.0%	\$70,454,165	\$71,052,082	(\$597,917)	-3.5%
20	1/17/2009	\$51,625,339	\$54,920,166	(\$3,294,827)	-4.1%	\$15,701,605	\$16,259,669	(\$558,064)	-2.1%	\$67,326,944	\$71,179,835	(\$3,852,891)	-3.6%
21	1/24/2009	\$52,789,573	\$54,439,890	(\$1,650,317)	-4.1%	\$15,897,473	\$16,691,724	(\$794,251)	-2.2%	\$68,687,046	\$71,131,614	(\$2,444,568)	-3.6%
22	1/31/2009	\$55,453,471	\$57,464,382	(\$2,010,911)	-4.0%	\$16,908,272	\$17,968,227	(\$1,059,955)	-2.4%	\$72,361,743	\$75,432,609	(\$3,070,866)	-3.7%
23	2/7/2009	\$62,247,711	\$60,715,019	\$1,532,692	-3.7%	\$18,354,314	\$20,097,338	(\$1,743,025)	-2.7%	\$80,602,025	\$80,812,357	(\$210,333)	-3.5%
24	2/14/2009	\$60,509,056	\$57,093,143	\$3,415,913	-3.3%	\$19,218,078	\$22,179,908	(\$2,961,831)	-3.3%	\$79,727,134	\$79,273,051	\$454,083	-3.3%
25	2/21/2009	\$59,194,623	\$57,627,047	\$1,567,576	-3.0%	\$21,098,199	\$27,230,539	(\$6,132,340)	-4.5%	\$80,292,822	\$84,857,586	(\$4,564,764)	-3.4%
26	2/28/2009	\$58,857,216	\$55,591,667	\$3,265,549	-2.7%	\$24,116,924	\$17,016,118	\$7,100,806	-2.8%	\$82,974,140	\$72,607,785	\$10,366,355	-2.7%
27	3/7/2009	\$59,552,257	\$56,837,481	\$2,714,776	-2.4%	\$23,995,136	\$16,690,193	\$7,304,943	-1.1%	\$83,547,393	\$73,527,674	\$10,019,719	-2.1%
28	3/14/2009	\$53,754,084	\$54,587,112	(\$833,028)	-2.4%	\$18,769,831	\$16,448,165	\$2,321,667	-0.6%	\$72,523,915	\$71,035,277	\$1,488,639	-1.9%
29	3/21/2009	\$52,581,107	\$53,098,937	(\$517,830)	-2.3%	\$15,903,038	\$16,639,184	(\$736,146)	-0.7%	\$68,484,145	\$69,738,121	(\$1,253,976)	-1.9%
30	3/28/2009	\$52,560,961	\$53,933,689	(\$1,372,728)	-2.3%	\$16,094,933	\$17,698,625	(\$1,603,692)	-1.0%	\$68,655,894	\$71,632,314	(\$2,976,420)	-2.0%
31	4/4/2009	\$56,249,759	\$57,598,982	(\$1,349,223)	-2.3%	\$17,357,002	\$17,665,411	(\$308,409)	-1.0%	\$73,606,761	\$75,264,393	(\$1,657,632)	-2.0%
32	4/11/2009	\$54,440,987	\$53,954,185	\$486,802	-2.2%	\$17,660,600	\$15,860,784	\$1,799,816	-0.7%	\$72,101,587	\$69,814,969	\$2,286,618	-1.9%
33	4/18/2009	\$52,755,834	\$53,946,736	(\$1,190,902)	-2.2%	\$18,469,585	\$16,452,676	\$2,016,909	-0.3%	\$71,225,419	\$70,399,412	\$826,007	-1.8%
34	4/25/2009	\$51,450,968	\$51,533,006	(\$82,038)	-2.2%	\$20,216,898	\$16,873,949	\$3,342,950	0.3%	\$71,667,866	\$68,406,955	\$3,260,912	-1.6%
35	5/2/2009	\$52,327,090	\$53,250,568	(\$923,478)	-2.2%	\$23,520,573	\$18,202,103	\$5,318,471	1.2%	\$75,847,663	\$71,452,671	\$4,394,993	-1.4%
36	5/9/2009	\$53,214,412	\$54,060,849	(\$846,437)	-2.1%	\$16,241,207	\$18,422,562	(\$2,181,355)	0.8%	\$69,455,619	\$72,483,411	(\$3,027,792)	-1.4%
37	5/16/2009	\$50,785,227	\$54,010,641	(\$3,225,414)	-2.2%	\$15,990,544	\$20,728,360	(\$4,737,816)	0.0%	\$66,775,771	\$74,739,001	(\$7,963,230)	-1.7%
38	5/23/2009	\$56,567,077	\$50,377,032	\$6,190,045	-1.9%	\$15,874,447	\$15,461,384	\$413,063	0.1%	\$72,441,524	\$65,838,416	\$6,603,108	-1.4%
39	5/30/2009	\$55,359,239	\$49,545,080	\$5,814,159	-1.6%	\$16,040,196	\$15,175,370	\$864,826	0.2%	\$71,399,435	\$64,720,450	\$6,678,985	-1.1%
40	6/6/2009	\$60,250,125	\$53,702,986	\$6,547,139	-1.2%	\$16,301,599	\$15,982,166	\$319,434	0.2%	\$76,551,724	\$69,685,152	\$6,866,573	-0.9%

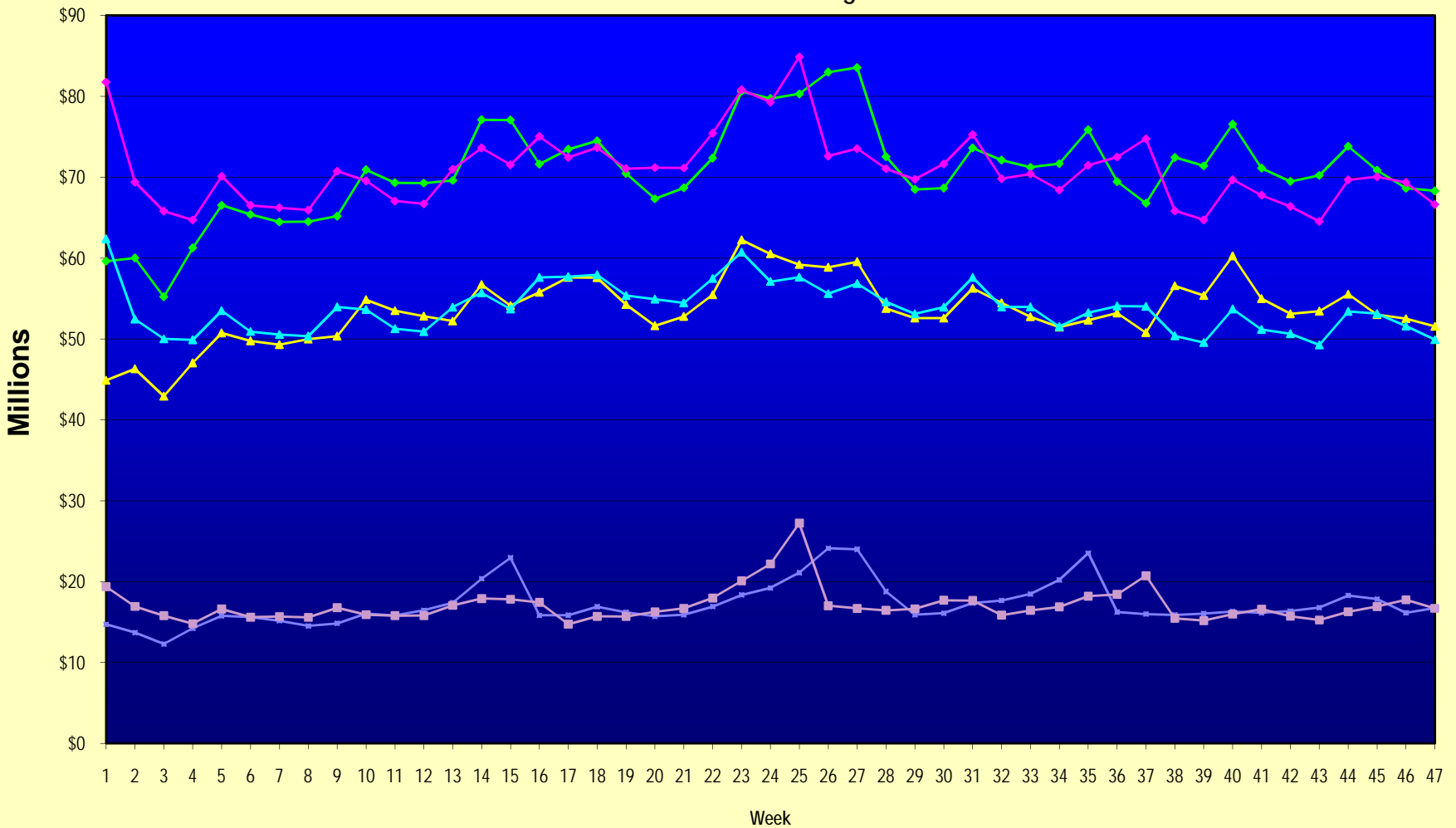
Note: Week 1 is not a full week of sales as this report is prepared on a Fiscal Year basis.

Texas Lottery Commission
Fiscal Year Over Year Change in Sales
Unaudited
FY 2009 Compared to FY 2008

Week	FY 2009 Week Ending	INSTANT TICKETS				ON-LINE GAMES				TOTAL SALES			
		FY 2009	FY 2008	Difference	% change - Cumulative Sales	FY 2009	FY 2008	Difference	% change - Cumulative Sales	FY 2009	FY 2008	Difference	% change - Cumulative Sales
41	6/13/2009	\$54,979,517	\$51,171,483	\$3,808,034	-1.0%	\$16,143,215	\$16,589,087	(\$445,872)	0.2%	\$71,122,732	\$67,760,570	\$3,362,162	-0.7%
42	6/20/2009	\$53,109,433	\$50,650,362	\$2,459,071	-0.9%	\$16,357,924	\$15,728,484	\$629,440	0.3%	\$69,467,357	\$66,378,846	\$3,088,511	-0.6%
43	6/27/2009	\$53,431,083	\$49,258,266	\$4,172,817	-0.7%	\$16,786,203	\$15,250,905	\$1,535,298	0.5%	\$70,217,286	\$64,509,171	\$5,708,115	-0.4%
44	7/4/2009	\$55,518,615	\$53,393,355	\$2,125,260	-0.6%	\$18,292,421	\$16,270,619	\$2,021,802	0.7%	\$73,811,036	\$69,663,974	\$4,147,062	-0.3%
45	7/11/2009	\$53,004,390	\$53,127,756	(\$123,366)	-0.6%	\$17,842,530	\$16,914,922	\$927,608	0.8%	\$70,846,920	\$70,042,678	\$804,242	-0.2%
46	7/18/2009	\$52,498,940	\$51,593,146	\$905,794	-0.5%	\$16,138,341	\$17,752,738	(\$1,614,397)	0.6%	\$68,637,281	\$69,345,884	(\$708,603)	-0.3%
47	7/25/2009	\$51,550,731	\$49,902,181	\$1,648,550	-0.5%	\$16,748,137	\$16,706,145	\$41,992	0.6%	\$68,298,868	\$66,608,326	\$1,690,542	-0.2%
48	8/1/2009		\$49,605,420				\$16,254,383				\$65,859,803		
49	8/8/2009		\$50,961,907				\$16,770,496				\$67,732,403		
50	8/15/2009		\$49,452,511				\$16,749,487				\$66,201,998		
51	8/22/2009		\$49,249,518				\$17,286,302				\$66,535,820		
52	8/29/2009		\$49,468,928				\$18,109,997				\$67,578,925		
53	9/5/2009		\$6,054,239				\$493,109				\$6,547,348		
Total thru Current Week		\$2,517,319,471	\$2,529,043,572	(\$11,724,101)	-0.5%	\$806,769,050	\$801,978,086	\$4,790,965	0.6%	\$3,324,088,521	\$3,331,021,658	(\$6,933,136)	-0.2%
Fiscal Year Total		\$2,517,319,471	\$2,783,836,095			\$806,769,050	\$887,641,858			\$3,324,088,521	\$3,671,477,953		

** FY 2009 includes 6 days; FY 2008 includes 8 days
FY 2009 average daily sales are \$9,242,258. Two days at average daily sales are \$18,484,516.

Texas Lottery Commission Fiscal Year Over Year Change in Sales



Note: Week 1 is not a full week of sales as this report is prepared on a Fiscal Year basis.

Texas Lottery Commission
Instant Tickets by Price Point
Sales, Prize Expense, Sales Contribution and Payout Percentage With Year Over Year Changes
Unaudited

Fiscal Year	Price Point	# of Active Games	FY Sales	% of Instant Ticket Sales	Year over Year Change in Sales	FY Prize Expense	Year over Year Change in Prize Expense	FY Sales Contribution	Year over Year Change in Contribution	Average Prize Payout %	Year over Year Change in Payout %
2008	\$1.00	47	209,009,452	8.3%		126,038,854		\$82,970,598		60.3%	0.4%
thru	\$2.00	57	426,974,592	16.9%		278,908,985		\$148,065,607		65.3%	0.7%
7/26/2008	\$3.00	18	231,137,136	9.1%		151,946,546		\$79,190,590		65.7%	-0.1%
	\$5.00	49	696,616,731	27.5%		473,226,115		\$223,390,616		67.9%	-0.1%
	\$7.00	13	142,359,560	5.6%		96,813,590		\$45,545,970		68.0%	0.1%
	\$10.00	20	376,511,716	14.9%		263,387,718		\$113,123,998		70.0%	-0.8%
	\$20.00	9	199,429,600	7.9%		143,225,179		\$56,204,421		71.8%	-0.2%
	\$25.00	2	54,526,475	2.2%		39,590,162		\$14,936,313		72.6%	0.3%
	\$30.00	3	55,178,160	2.2%		39,944,930		\$15,233,230		72.4%	0.2%
	\$50.00	3	137,300,150	5.4%		99,072,638		\$38,227,512		72.2%	0.0%
Total		221	\$2,529,043,572			\$1,712,154,718		\$816,888,854		67.7%	0.3%
2009	\$1.00	47	215,586,856	8.6%		129,800,098		85,786,758		60.2%	0.2%
thru	\$2.00	42	412,075,867	16.4%		268,463,238		143,612,629		65.1%	-0.2%
7/25/2009	\$3.00	18	261,664,725	10.4%		171,623,640		90,041,085		65.6%	-0.2%
	\$5.00	48	768,299,652	30.5%		522,774,086		245,525,566		68.0%	0.2%
	\$7.00	9	122,672,536	4.9%		83,427,407		39,245,129		68.0%	0.0%
	\$10.00	21	348,625,760	13.8%		243,959,594		104,666,166		70.0%	0.0%
	\$20.00	9	267,943,920	10.6%		195,293,241		72,650,679		72.9%	1.6%
	\$25.00	1	2,372,325	0.1%		1,725,527		646,798		72.7%	0.2%
	\$30.00	3	10,023,630	0.4%		7,263,494		2,760,136		72.5%	0.1%
	\$50.00	4	108,054,200	4.3%		80,284,756		27,769,444		74.3%	3.0%
Total		202	\$2,517,319,471			\$1,704,615,081		\$812,704,390		67.7%	0.1%
Variance	\$1.00	0	6,577,404		3.1%	3,761,244	3.0%	2,816,160	3.4%	-0.10%	
2009 to	\$2.00	-15	-14,898,725		-3.5%	-10,445,747	-3.7%	-4,452,978	-3.0%	-0.17%	
2008	\$3.00	0	30,527,589		13.2%	19,677,094	13.0%	10,850,495	13.7%	-0.15%	
	\$5.00	-1	71,682,921		10.3%	49,547,970	10.5%	22,134,951	9.9%	0.11%	
	\$7.00	-4	-19,687,024		-13.8%	-13,386,183	-13.8%	-6,300,841	-13.8%	0.00%	
	\$10.00	1	-27,885,956		-7.4%	-19,428,124	-7.4%	-8,457,832	-7.5%	0.02%	
	\$20.00	0	68,514,320		34.4%	52,068,062	36.4%	16,446,258	29.3%	1.07%	
	\$25.00	-1	-52,154,150		-95.6%	-37,864,635	-95.6%	-14,289,515	-95.7%	0.13%	
	\$30.00	0	-45,154,530		-81.8%	-32,681,436	-81.8%	-12,473,094	-81.9%	0.07%	
	\$50.00	1	-29,245,950		-21.3%	-18,787,882	-19.0%	-10,458,068	-27.4%	2.14%	
Total		-19	-\$11,724,101		-0.5%	-\$7,539,637	-0.4%	-\$4,184,464	-0.5%	0.02%	

Texas Lottery Commission
Instant Tickets by Price Point
Sales, Prize Expense, Sales Contribution and Payout Percentage With Year Over Year Changes
 Unaudited

Notes - Instant Ticket Variances

		FY 2009		FY 2008		Difference
Sales	\$1 - \$7		\$1,780,299,636		\$1,706,097,471	\$74,202,165
Prize Exp.	\$1 - \$7		\$1,176,088,469		\$1,126,934,090	\$49,154,378
Sales Cont.	\$1 - \$7		\$604,211,167		\$579,163,381	\$25,047,787
Prize Exp. %	\$1 - \$7		66.1%		66.1%	0.0%
		FY 2009		FY 2008		Difference
Sales	\$10 - \$50		\$737,019,835		\$822,946,101	-\$85,926,266
Prize Exp.	\$10 - \$50		\$528,526,612		\$585,220,628	-\$56,694,015
Sales Cont.	\$10 - \$50		\$208,493,223		\$237,725,473	-\$29,232,251
Prize Exp. %	\$10 - \$50		71.7%		71.1%	0.6%
		FY 2009		FY 2008		Difference
Sales	Instant		\$2,517,319,471		\$2,529,043,572	-\$11,724,101
Prize Exp.	Instant		\$1,704,615,081		\$1,712,154,718	-\$7,539,637
Sales Cont.	Instant		\$812,704,390		\$816,888,854	-\$4,184,464
Prize Exp. %	Instant		67.7%		67.7%	0.0%

		FY 2009		FY 2008		Difference
Sales	\$1 - \$10		\$2,128,925,396		\$2,082,609,187	\$46,316,209
Prize Exp.	\$1 - \$10		\$1,420,048,063		\$1,390,321,809	\$29,726,254
Sales Cont.	\$1 - \$10		\$708,877,333		\$692,287,378	\$16,589,955
Prize Exp. %	\$1 - \$10		66.7%		66.8%	-0.1%
		FY 2009		FY 2008		Difference
Sales	\$20 - \$50		\$388,394,075		\$446,434,385	-\$58,040,310
Prize Exp.	\$20 - \$50		\$284,567,018		\$321,832,909	-\$37,265,891
Sales Cont.	\$20 - \$50		\$103,827,057		\$124,601,476	-\$20,774,419
Prize Exp. %	\$20 - \$50		73.3%		72.1%	1.2%
		FY 2009		FY 2008		Difference
Sales	Instant		\$2,517,319,471		\$2,529,043,572	-\$11,724,101
Prize Exp.	Instant		\$1,704,615,081		\$1,712,154,718	-\$7,539,637
Sales Cont.	Instant		\$812,704,390		\$816,888,854	-\$4,184,464
Prize Exp. %	Instant		67.7%		67.7%	0.0%

Texas Lottery Commission
Weekly Sales Summary
& Comparison to Previous Week
 Unaudited

	Week Ending 07/25/2009	% of Sales	Week Ending 07/18/2009	% of Sales	\$ change	% change
	<u>THIS WEEK</u>		<u>LAST WEEK</u>			
Total Sales	<u>\$68,298,868</u>		<u>\$68,637,281</u>		<u>-\$338,413</u>	-0.49%
Instant Tickets	<u>\$51,550,731</u>	75.5%	<u>\$52,498,940</u>	76.5%	<u>-\$948,209</u>	-1.81%
Lotto Texas	\$4,330,422	6.3%	\$4,285,057	6.2%	\$45,365	1.06%
Pick 3	\$5,093,324	7.5%	\$5,041,176	7.3%	\$52,148	1.03%
Pick 3 Sum It Up	\$102,838	0.2%	\$104,049	0.2%	-\$1,212	-1.16%
Cash 5	\$1,265,233	1.9%	\$1,284,914	1.9%	-\$19,681	-1.53%
Texas Two Step	\$893,643	1.3%	\$785,813	1.1%	\$107,830	13.72%
Mega Millions	\$3,157,506	4.6%	\$2,831,976	4.1%	\$325,530	11.49%
Megaplier	\$841,070	1.2%	\$760,753	1.1%	\$80,317	10.56%
Daily 4	\$964,018	1.4%	\$944,561	1.4%	\$19,458	2.06%
Daily 4 Sum It Up	<u>\$100,084</u>	0.1%	<u>\$100,042</u>	0.1%	<u>\$42</u>	0.04%
Total Online Sales	<u>\$16,748,137</u>		<u>\$16,138,341</u>		<u>\$609,797</u>	3.78%

* Totals may not sum due to rounding.

Texas Lottery Commission
Weekly Sales Summary
Unaudited

INSTANT TICKETS
TOP TEN SELLING GAMES

For the Week Ending : 07/25/2009

Rank	Price Point	Game	Sales (Millions)
1	\$ 20	\$500,000,000 BLOCKBUSTER	\$ 7.648
2	\$ 10	WILD 10'S	\$ 3.053
3	\$ 5	PURE GOLD	\$ 2.777
4	\$ 50	\$140,000,000 EXTREME PAYOUT	\$ 1.811
5	\$ 5	CADILLAC ESCALADE CASH	\$ 1.778
6	\$ 10	SUMMER SPECTACULAR	\$ 1.729
7	\$ 3	BONUS CASHWORD	\$ 1.647
8	\$ 5	CASH VAULT	\$ 1.554
9	\$ 10	SET FOR LIFE	\$ 1.531
10	\$ 7	BEST OF 7'S	\$ 1.524

Texas Lottery Commission
Prize Payout Tracking Report
Unaudited

Through Week Ending 07/25/2009

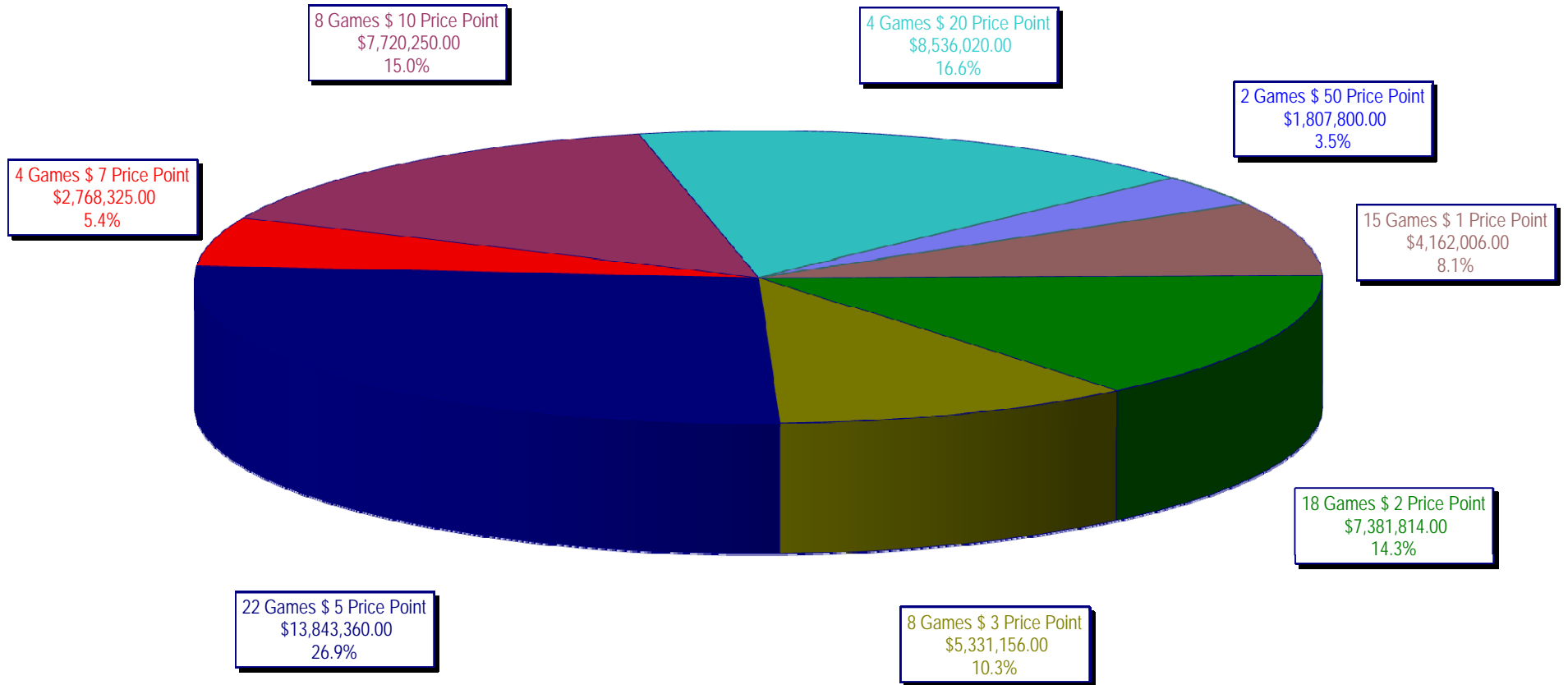
On-Line Sales

		FY Sales Through Week Ending 7/25/2009		FY Prize Expense Through Week Ending 7/25/2009	Actual* Prize Payout	Base Payout (Prize Pool)
Lotto	\$	174,003,693	\$	87,590,906	50.34%	50.00%
Pick 3		258,244,553		125,059,540	48.43%	50.00%
Pick 3 Sum It Up		5,394,038		2,425,269	44.96%	50.00%
Cash 5		64,057,072		32,133,800	50.16%	50.00%
Texas Two-Step		45,321,597		23,835,451	52.59%	50.00%
Mega Millions		173,142,570		86,680,566	50.06%	50.00%**
Megaplier		39,613,678		20,050,723	50.62%	N/A
Daily 4		42,067,896		20,964,675	49.84%	50.00%
Daily 4-Sum It Up		4,923,954		2,102,886	42.71%	50.00%
Totals	\$	806,769,050	\$	400,843,817	49.69%	

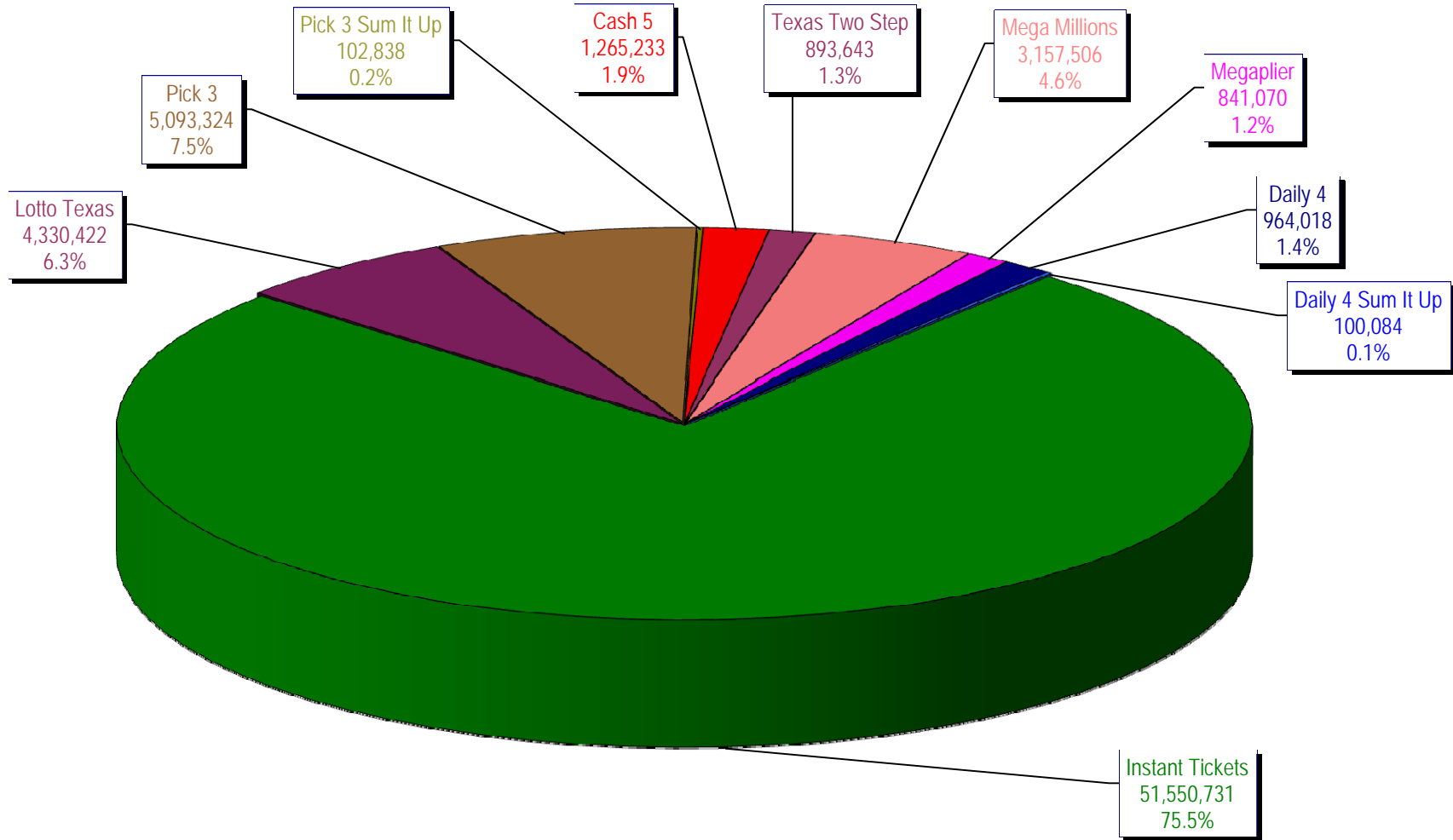
* Before Unclaimed Prizes

** Estimated; depends on # of guaranteed prizes won in Texas

Texas Lottery Commission
Instant Ticket Sales
For the Week Ending 07/25/2009
(Unaudited)



Texas Lottery Commission
All Game Sales
For the Week Ending 07/25/2009
(Unaudited)



Texas Lottery Commission - Weekly Sales Summary for FY 2009 (Unaudited)

Week Ended	Instant Games	New Games & Dates	Lotto Texas	Jackpot		Pick 3	Pick 3 Sum It Up	Cash 5	Texas Two Step	Jackpot		Mega Millions	Jackpot		Megaplier	Daily 4	Daily 4 Sum It Up	Total	Per Cap.
				W	S					M/T	TH/F		T	F					
9/6/2008	50,944,343.00	1108 (\$2,N), 1088 (\$3, N) - 9/01/08	3,378,718.00	5	6	5,436,414.00	122,123.00	1,396,622.00	890,346.00	350	450	2,445,490.00	12	16	649,090.00	786,482.50	109,834.00	66,159,462.50	2.77
9/13/2008	46,309,551.00	1109 (\$1,N), 1098 (\$5, N) - 9/08/08	3,020,089.00	7	8	4,705,585.50	105,899.00	1,279,412.00	856,199.00	600	200	2,327,214.00	24	12	617,672.00	696,633.00	96,156.50	60,014,411.00	2.51
9/20/2008	42,923,171.00	0	3,054,093.00	9	10	4,121,734.50	90,718.00	1,155,350.00	637,792.00	225	250	1,978,127.00	15	12	540,225.00	627,210.00	86,013.50	55,214,434.00	2.31
9/27/2008	47,042,801.00	1111 (\$2,N), 1099 (\$5, N) - 9/22/08	3,427,671.00	11	12	4,821,563.00	103,189.50	1,288,062.00	834,307.00	275	425	2,322,862.00	16	24	617,085.00	709,741.50	97,858.00	61,265,140.00	2.56
10/4/2008	50,747,162.00	1113 (\$1,N) 9/29/08	3,675,683.00	13	14	5,305,711.00	116,332.50	1,369,040.00	1,074,874.00	525	650	2,671,927.00	32	42	693,845.00	770,782.50	106,277.00	66,531,634.00	2.78
10/11/2008	49,763,789.00	0	3,732,365.00	15	16	5,287,094.00	114,665.50	1,370,334.00	1,305,250.00	800	975	2,306,070.00	12	16	622,120.00	778,204.00	106,395.00	65,386,286.50	2.74
10/18/2008	49,299,053.00	1117 (\$3,N), 1118 (\$20,N) - 10/13/08	3,780,438.00	17	18	5,149,258.00	109,530.00	1,355,601.00	741,849.00	200	200	2,500,644.00	23	32	652,198.00	776,366.00	102,056.00	64,466,993.00	2.70
10/25/2008	49,977,581.00	1119 (\$1,N), 1120 (\$5,N) - 10/20/08	3,210,762.00	4	5	5,099,671.00	107,104.50	1,339,079.00	789,649.00	225	275	2,456,965.00	42	12	641,206.00	778,434.00	102,972.50	64,503,424.00	2.70
11/1/2008	50,346,542.00	1121 (\$2,N), 1122 (\$10,N) - 10/27/08	3,325,641.00	6	7	5,234,124.00	109,983.00	1,339,046.00	946,035.00	375	475	2,347,596.00	16	23	626,235.00	805,572.00	104,612.50	65,185,386.50	2.73
11/8/2008	54,860,087.00	1123 (\$3,N), 1124 (\$7,N) - 11/03/08; 1103 (\$3,N) - 11/05/08; 1063 (\$3,N) - 11/07/08	3,290,417.00	4	5	5,686,701.00	118,495.00	1,397,985.00	1,158,101.00	625	750	2,729,302.50	31	42	692,662.00	871,230.00	112,175.50	70,917,156.00	2.97
11/15/2008	53,484,812.00	1125 (\$1, N), 1126 (\$5,N) - 11/10/08	3,336,934.00	6	7	5,459,984.00	112,884.00	1,366,024.00	766,955.00	200	225	3,102,251.00	51	62	749,736.00	830,957.00	104,094.00	69,314,631.00	2.90
11/22/2008	52,806,511.00	0	3,452,481.00	8	9	5,329,591.00	108,861.50	1,358,271.00	743,950.00	200	200	3,666,517.00	73	86	847,201.00	849,077.50	104,797.50	69,267,258.50	2.90
11/29/2008	52,199,741.00	1127 (\$2,N), 1128 (\$5,N) - 11/24/08	3,585,374.00	10	11	5,340,783.50	111,443.00	1,315,233.00	686,077.00	200	225	4,441,715.00	96	111	968,906.00	845,475.50	102,569.00	69,597,317.00	2.91
12/6/2008	56,731,851.00	0	3,794,991.00	12	13	5,752,593.00	121,663.50	1,416,446.00	780,328.00	250	200	6,238,355.00	128	146	1,270,214.00	881,841.50	107,357.00	77,095,640.00	3.23
12/13/2008	54,109,617.00	1129 (\$1, N) - 12/08/08	3,315,658.00	4	5	5,580,770.00	114,295.50	1,384,858.00	766,893.00	225	250	9,150,536.00	170	207	1,691,121.00	846,176.50	101,919.50	77,061,844.50	3.22
12/20/2008	55,777,328.00	1104 (\$2,N), 1105 (\$5,N), 1106 (\$10,N) - 12/15/08	3,432,340.00	6	7	5,741,120.00	116,075.50	1,401,805.00	741,945.00	200	200	2,736,234.00	12	16	687,875.00	871,579.50	104,543.00	71,610,845.00	3.00
12/27/2008	57,597,885.00	1077 (\$1,N), 1110 (\$1,N) - 12/22/08	3,582,169.00	8	4	5,628,081.50	115,323.00	1,340,590.00	708,906.00	225	250	2,842,167.00	22	29	706,042.00	828,346.00	100,146.00	73,449,655.50	3.07
1/3/2009	57,582,115.00	0	3,784,763.00	5	6	5,690,220.50	120,519.50	1,406,807.00	934,000.00	325	525	3,190,457.00	37	46	780,850.00	885,674.00	106,736.50	74,482,142.50	3.12
1/10/2009	54,250,945.00	1135 (\$2,N), 1136 (\$5,N) - 1/5/09	3,582,400.00	7	8	5,476,890.00	116,674.50	1,403,531.00	1,267,847.00	675	900	2,701,275.00	12	16	681,574.00	868,919.00	104,109.50	70,454,165.00	2.95
1/17/2009	51,625,339.00	1137 (\$1,N), 1138 (\$3,N) - 1/12/09	3,668,302.50	9	10	5,443,159.00	112,605.00	1,387,958.00	778,563.00	200	200	2,683,707.00	22	12	675,416.00	852,987.00	98,907.50	67,326,944.00	2.82
1/24/2009	52,789,573.00	1115 (\$2,N), 1116 (\$5,N) - 1/19/09	3,723,835.50	11	12	5,514,547.50	115,827.50	1,376,695.00	860,483.00	225	325	2,692,611.00	16	21	676,936.00	836,996.00	99,541.00	68,687,045.50	2.87
1/31/2009	55,453,471.00	1080 (\$1,N), 1024 (\$20,R) - 1/26/09; 1062 (\$5,N) - 1/28/09	3,837,299.00	13	14	5,700,714.50	121,794.50	1,403,756.00	1,070,879.00	450	600	3,002,883.00	30	40	731,253.00	925,937.50	113,755.50	72,361,743.00	3.03
2/7/2009	62,247,711.00	1035 (\$2,N), 1144 (\$5,N), 1058 (\$10, N) - 2/2/09	4,092,117.00	15	16	6,336,717.00	134,543.00	1,481,812.00	842,746.00	200	225	3,509,032.00	50	60	829,550.00	1,007,529.00	120,267.50	80,602,024.50	3.37
2/14/2009	60,509,056.00	1146 (\$7,N), 1089 (\$1,N) - 2/9/09	4,119,193.00	17	18	6,363,028.00	133,901.50	1,445,616.00	1,013,987.00	325	450	4,082,572.00	73	85	928,813.00	1,010,898.50	120,068.50	79,727,133.50	3.34
2/21/2009	59,194,623.00	1046 (\$2,N), 1140 (\$5,N) - 2/16/09	4,326,401.00	19	20	6,038,807.50	128,493.00	1,439,312.00	1,268,803.00	600	750	5,614,471.00	103	120	1,178,133.00	988,075.00	115,703.50	80,292,822.00	3.36
2/28/2009	58,857,216.00	1132 (\$10,N), 1149 (\$1,N) - 2/23/09	4,526,304.00	21	22	6,084,457.50	128,979.50	1,439,607.00	1,668,414.00	925	1,150	7,676,975.00	145	171	1,504,895.00	973,121.00	114,171.00	82,974,140.00	3.47

Texas Lottery Commission - Weekly Sales Summary for FY 2009 (Unaudited)

Week Ended	Instant Games	New Games & Dates	Lotto Texas	Jackpot		Pick 3	Pick 3 Sum It Up	Cash 5	Texas Two Step	Jackpot			Mega Millions	Jackpot		Megaplier	Daily 4	Daily 4 Sum It Up	Total	Per Cap.
				W	S					M/T	TH/F	T		F						
3/7/2009	59,552,257.00	0	4,928,440.00	23	25	6,133,789.00	128,599.00	1,487,185.00	1,984,358.00	1,350	1,600	6,898,457.00	212	12	1,349,427.00	971,644.50	113,236.00	83,547,392.50	3.50	
3/14/2009	53,754,084.00	1139 (\$2.N), 1079 (\$5.N) - 3/09/09	4,752,592.00	26	28	5,850,166.00	120,684.50	1,418,127.00	2,112,571.00	1,900	2,150	2,782,204.00	16	26	698,214.00	925,615.00	109,657.50	72,523,915.00	3.03	
3/21/2009	52,581,107.00	1107 (\$1.N), 1154 (\$3.N), 1057 (\$10.N) - 3/16/09; 1102 (\$2.N) - 3/19/09	3,437,818.00	4	5	5,776,041.50	117,294.00	1,399,720.00	880,620.00	200	225	2,595,785.00	12	16	653,517.00	934,185.00	108,057.50	68,484,145.00	2.87	
3/28/2009	52,560,961.00	1130 (\$5.N), 1150 (\$10.N) - 3/23/09	3,486,731.00	6	7	5,633,454.50	114,269.50	1,381,550.00	901,673.00	300	200	2,845,499.00	24	34	701,971.00	925,093.50	104,691.50	68,655,894.00	2.87	
4/4/2009	56,249,759.00	1151 (\$2.N), 1101 (\$50.N) - 3/30/09	3,746,083.00	8	9	5,893,043.50	122,332.00	1,429,598.00	940,614.00	225	300	3,321,274.00	43	54	794,282.00	998,042.00	111,733.50	73,606,761.00	3.08	
4/11/2009	54,440,987.00	1153 (\$2.N) - 4/07/09; 1152 (\$3.N) - 4/08/09	3,594,176.00	10	4	5,893,551.00	120,491.50	1,394,879.00	933,807.00	425	200	3,772,700.00	65	78	857,890.00	987,127.50	105,977.50	72,101,586.50	3.02	
4/18/2009	52,755,834.00	1145 (\$1.N), 1148 (\$5.N) - 4/13/09	3,462,217.00	5	6	5,627,572.00	117,123.50	1,374,682.00	829,493.00	225	200	4,960,982.00	92	109	1,040,136.00	957,161.00	100,218.50	71,225,419.00	2.98	
4/25/2009	51,450,968.00	1051 (\$7.N) - 4/20/09	3,517,624.00	7	8	5,408,672.50	117,314.50	1,347,754.00	876,206.00	225	300	6,614,120.95	130	155	1,298,021.00	937,777.00	99,408.50	71,667,866.45	3.00	
5/2/2009	52,327,090.00	1161 (\$1.N), 1081 (\$5.N) - 4/27/09	3,679,438.00	9	10	5,512,770.50	113,755.50	1,362,174.00	880,888.00	425	200	9,277,686.00	181	225	1,653,107.00	937,874.00	102,880.00	75,847,663.00	3.17	
5/9/2009	53,214,412.00	0	3,554,635.00	11	4	5,603,106.00	118,185.50	1,389,454.00	823,436.00	225	200	2,961,748.00	12	17	718,169.00	967,592.00	104,881.00	69,455,618.50	2.91	
5/16/2009	50,785,227.00	1131 (\$2.N), 1134 (\$5.N) - 5/11/09 1165 (\$1.N), 1114 (\$20.N) - 5/18/09; 1156 (\$1.N) - 5/19/09; 1153 (\$2.N) - 5/20/09	3,332,475.00	5	6	5,417,197.00	112,501.00	1,356,843.00	842,436.00	225	275	3,116,696.00	28	38	748,141.00	959,922.50	104,332.00	66,775,770.50	2.79	
5/23/2009	56,567,077.00	1049 (\$3.N) - 5/25/09	3,425,065.00	7	8	5,363,150.50	111,143.50	1,356,979.00	1,061,946.00	400	525	2,790,741.00	12	16	694,815.00	967,375.50	103,231.00	72,441,523.50	3.03	
5/30/2009	55,359,239.00	1112 (\$5.N) - 6/1/09	3,480,479.00	9	10	5,329,739.50	108,222.50	1,314,598.00	1,173,008.00	650	800	2,871,590.00	25	35	705,366.00	957,423.50	99,769.00	71,399,434.50	2.99	
6/6/2009	60,250,125.00	1173 (\$1.N), 1090 (\$10.N) - 06/29/09	3,656,108.00	11	12	5,806,294.00	117,692.00	1,379,840.00	833,645.00	200	225	2,696,889.00	12	17	684,660.00	1,020,540.50	105,930.50	76,551,724.00	3.20	
6/13/2009	54,979,517.00	1155 (\$3.N), 1158 (\$5.N) - 07/06/09	3,639,064.00	13	14	5,434,316.00	109,481.50	1,323,811.00	960,321.00	300	400	2,892,403.00	25	36	712,936.00	967,447.50	103,434.50	71,122,731.50	2.98	
6/20/2009	53,109,433.00	1171 (\$2.N), 1260 (\$10.N) - 07/13/09	3,722,083.00	15	16	5,298,164.50	106,370.50	1,295,187.00	914,417.00	525	200	3,203,712.00	46	57	763,056.00	955,438.50	99,495.00	69,467,356.50	2.91	
6/27/2009	53,431,083.00	1177 (\$1.N), 1083 (\$7.N) - 07/20/09	3,826,811.00	17	18	5,294,301.50	105,363.00	1,280,460.00	779,414.00	225	200	3,619,796.00	68	81	829,739.00	951,028.50	99,289.50	70,217,285.50	2.94	
7/4/2009	55,518,615.00	1171 (\$2.N), 1260 (\$10.N) - 07/13/09	3,978,976.00	19	20	5,365,381.00	109,234.50	1,301,272.00	834,396.00	225	275	4,619,366.00	94	113	987,368.00	990,473.50	105,953.50	73,811,035.50	3.09	
7/11/2009	53,004,390.00	1177 (\$1.N), 1083 (\$7.N) - 07/20/09	4,220,775.00	21	22	5,261,293.50	108,423.50	1,309,778.00	997,751.00	375	500	3,994,574.00	133	12	883,721.00	964,339.00	101,874.50	70,846,919.50	2.96	
7/18/2009	52,498,940.00	1177 (\$1.N), 1083 (\$7.N) - 07/20/09	4,285,057.00	23	25	5,041,176.00	104,049.00	1,284,914.00	785,813.00	200	225	2,831,976.00	16	27	760,753.00	944,560.50	100,042.00	68,637,280.50	2.87	
7/25/2009	51,550,731.00	1177 (\$1.N), 1083 (\$7.N) - 07/20/09	4,330,422.00	26	27	5,093,324.00	102,837.50	1,265,233.00	893,643.00	275	375	3,157,506.00	37	48	841,070.00	964,018.00	100,083.50	68,298,868.00	2.86	
weekly change	-1.81%		1.06%			1.03%	-1.16%	-1.53%	13.72%			11.49%			10.56%	2.06%	0.04%	-0.49%		
	SALES		SALES			SALES	SALES	SALES	SALES			SALES			SALES	SALES	SALES	SALES	% of Sales	
Startup to date	35,997,905,473.00		10,453,100,740.00			3,556,963,505.00	11,879,868.00	2,183,213,082.00	471,587,315.00			1,099,281,165.45			257,821,712.00	84,284,867.50	13,262,757.00	54,337,434,456.95	100.0%	
Calendar Year to date	1,616,001,798.00		113,731,448.00			165,804,006.00	175,670.50	40,474,628.00	30,428,178.00			115,324,261.95			25,953,897.00	28,077,209.00	3,121,949.50	2,139,093,045.95	100.0%	
Fiscal Year to date 2009	2,517,319,471.00		174,003,693.00			258,244,552.50	5,394,038.00	64,057,072.00	45,321,597.00			173,142,570.45			39,613,678.00	42,067,896.00	4,923,953.50	3,324,088,521.45	100.0%	