



WEEKLY SALES SUMMARY

Unaudited

Week Ending: 08/08/2009

Texas Lottery Commission
Fiscal Year to Date Sales Comparison
Unaudited

Through the week ending 08/08/2009 (49 weeks)

Sales by Game	FY 2007 *	FY 2008 **	FY 2009	\$ Change		% Change	
				FY 2009 to FY 2007	FY 2009 to FY 2008	FY 2009 to FY 2007	FY 2009 to FY 2008
Instants	\$ 2,712,140,410	\$ 2,629,610,899	\$ 2,623,719,843	\$ -88,420,567	\$ -5,891,056	-3.3%	-0.2%
Lotto Texas	221,027,669	191,767,771	183,532,002	-37,495,667	-8,235,769	-17.0%	-4.3%
Pick 3	296,411,769	270,642,292	268,987,462	-27,424,307	-1,654,830	-9.3%	-0.6%
Pick 3 Sum It Up	-	6,137,709	5,601,629	5,601,629	-536,080	-	-8.7%
Cash 5	81,856,242	71,462,627	66,642,234	-15,214,008	-4,820,393	-18.6%	-6.7%
Texas Two Step	45,833,518	45,605,757	47,201,571	1,368,053	1,595,814	3.0%	3.5%
Mega Millions	164,551,852	162,802,982	181,428,018	16,876,166	18,625,036	10.3%	11.4%
Megaplier	39,148,311	38,680,968	41,603,214	2,454,903	2,922,246	6.3%	7.6%
Daily 4	-	39,887,231	43,973,786	43,973,786	4,086,555	-	10.2%
Daily 4 Sum It Up	-	8,015,628	5,122,431	5,122,431	-2,893,197	-	-36.1%
Total	\$ 3,560,969,771	\$ 3,464,613,863	\$ 3,467,812,190	\$ -93,157,581	\$ 3,198,327	-2.6%	0.1%

* 3 extra days in 2007 ** 2 extra days in 2008

Texas Lottery Commission
Fiscal Year Over Year Change in Sales
Unaudited
FY 2009 Compared to FY 2008

Week	FY 2009 Week Ending	INSTANT TICKETS				ON-LINE GAMES				TOTAL SALES			
		FY 2009	FY 2008	Difference	% change - Cumulative Sales	FY 2009	FY 2008	Difference	% change - Cumulative Sales	FY 2009	FY 2008	Difference	% change - Cumulative Sales
1	9/6/2008**	\$44,890,104	\$62,376,229	(\$17,486,125)	-28.0%	\$14,722,011	\$19,372,224	(\$4,650,213)	-24.0%	\$59,612,115	\$81,748,453	(\$22,136,338)	-27.1%
2	9/13/2008	\$46,309,551	\$52,458,866	(\$6,149,315)	-20.6%	\$13,704,860	\$16,926,163	(\$3,221,303)	-21.7%	\$60,014,411	\$69,385,029	(\$9,370,618)	-20.8%
3	9/20/2008	\$42,923,171	\$49,998,934	(\$7,075,763)	-18.6%	\$12,291,263	\$15,792,283	(\$3,501,020)	-21.8%	\$55,214,434	\$65,791,217	(\$10,576,783)	-19.4%
4	9/27/2008	\$47,042,801	\$49,894,175	(\$2,851,374)	-15.6%	\$14,222,339	\$14,800,514	(\$578,175)	-17.9%	\$61,265,140	\$64,694,689	(\$3,429,549)	-16.2%
5	10/4/2008	\$50,747,162	\$53,486,863	(\$2,739,701)	-13.5%	\$15,784,472	\$16,618,430	(\$833,958)	-15.3%	\$66,531,634	\$70,105,293	(\$3,573,659)	-14.0%
6	10/11/2008	\$49,763,789	\$50,918,020	(\$1,154,231)	-11.7%	\$15,622,498	\$15,601,410	\$21,088	-12.9%	\$65,386,287	\$66,519,430	(\$1,133,143)	-12.0%
7	10/18/2008	\$49,299,053	\$50,532,253	(\$1,233,200)	-10.5%	\$15,167,940	\$15,682,666	(\$514,726)	-11.6%	\$64,466,993	\$66,214,919	(\$1,747,926)	-10.7%
8	10/25/2008	\$49,977,581	\$50,347,450	(\$369,869)	-9.3%	\$14,525,843	\$15,586,516	(\$1,060,673)	-11.0%	\$64,503,424	\$65,933,966	(\$1,430,542)	-9.7%
9	11/1/2008	\$50,346,542	\$53,953,733	(\$3,607,191)	-9.0%	\$14,838,845	\$16,775,983	(\$1,937,139)	-11.1%	\$65,185,387	\$70,729,716	(\$5,544,330)	-9.5%
10	11/8/2008	\$54,860,087	\$53,635,090	\$1,224,997	-7.9%	\$16,057,069	\$15,912,791	\$144,278	-9.9%	\$70,917,156	\$69,547,881	\$1,369,275	-8.3%
11	11/15/2008	\$53,484,812	\$51,254,401	\$2,230,411	-6.8%	\$15,829,819	\$15,797,076	\$32,744	-9.0%	\$69,314,631	\$67,051,477	\$2,263,155	-7.3%
12	11/22/2008	\$52,806,511	\$50,897,817	\$1,908,694	-5.9%	\$16,460,748	\$15,801,720	\$659,028	-7.9%	\$69,267,259	\$66,699,537	\$2,567,722	-6.4%
13	11/29/2008	\$52,199,741	\$53,913,115	(\$1,713,374)	-5.7%	\$17,397,576	\$17,055,505	\$342,072	-7.1%	\$69,597,317	\$70,968,620	(\$1,371,303)	-6.0%
14	12/6/2008	\$56,731,851	\$55,702,697	\$1,029,154	-5.1%	\$20,363,789	\$17,900,717	\$2,463,073	-5.5%	\$77,095,640	\$73,603,414	\$3,492,227	-5.2%
15	12/13/2008	\$54,109,617	\$53,703,516	\$406,101	-4.7%	\$22,952,228	\$17,820,841	\$5,131,387	-3.0%	\$77,061,845	\$71,524,357	\$5,537,488	-4.3%
16	12/20/2008	\$55,777,328	\$57,592,769	(\$1,815,441)	-4.6%	\$15,833,517	\$17,436,233	(\$1,602,716)	-3.4%	\$71,610,845	\$75,029,002	(\$3,418,157)	-4.3%
17	12/27/2008	\$57,597,885	\$57,696,003	(\$98,118)	-4.3%	\$15,851,771	\$14,743,680	\$1,108,091	-2.9%	\$73,449,656	\$72,439,683	\$1,009,973	-4.0%
18	1/3/2009	\$57,582,115	\$57,935,952	(\$353,837)	-4.1%	\$16,900,028	\$15,704,450	\$1,195,578	-2.3%	\$74,482,143	\$73,640,402	\$841,741	-3.7%
19	1/10/2009	\$54,250,945	\$55,360,542	(\$1,109,597)	-4.0%	\$16,203,220	\$15,691,540	\$511,680	-2.0%	\$70,454,165	\$71,052,082	(\$597,917)	-3.5%
20	1/17/2009	\$51,625,339	\$54,920,166	(\$3,294,827)	-4.1%	\$15,701,605	\$16,259,669	(\$558,064)	-2.1%	\$67,326,944	\$71,179,835	(\$3,852,891)	-3.6%
21	1/24/2009	\$52,789,573	\$54,439,890	(\$1,650,317)	-4.1%	\$15,897,473	\$16,691,724	(\$794,251)	-2.2%	\$68,687,046	\$71,131,614	(\$2,444,568)	-3.6%
22	1/31/2009	\$55,453,471	\$57,464,382	(\$2,010,911)	-4.0%	\$16,908,272	\$17,968,227	(\$1,059,955)	-2.4%	\$72,361,743	\$75,432,609	(\$3,070,866)	-3.7%
23	2/7/2009	\$62,247,711	\$60,715,019	\$1,532,692	-3.7%	\$18,354,314	\$20,097,338	(\$1,743,025)	-2.7%	\$80,602,025	\$80,812,357	(\$210,333)	-3.5%
24	2/14/2009	\$60,509,056	\$57,093,143	\$3,415,913	-3.3%	\$19,218,078	\$22,179,908	(\$2,961,831)	-3.3%	\$79,727,134	\$79,273,051	\$454,083	-3.3%
25	2/21/2009	\$59,194,623	\$57,627,047	\$1,567,576	-3.0%	\$21,098,199	\$27,230,539	(\$6,132,340)	-4.5%	\$80,292,822	\$84,857,586	(\$4,564,764)	-3.4%
26	2/28/2009	\$58,857,216	\$55,591,667	\$3,265,549	-2.7%	\$24,116,924	\$17,016,118	\$7,100,806	-2.8%	\$82,974,140	\$72,607,785	\$10,366,355	-2.7%
27	3/7/2009	\$59,552,257	\$56,837,481	\$2,714,776	-2.4%	\$23,995,136	\$16,690,193	\$7,304,943	-1.1%	\$83,547,393	\$73,527,674	\$10,019,719	-2.1%
28	3/14/2009	\$53,754,084	\$54,587,112	(\$833,028)	-2.4%	\$18,769,831	\$16,448,165	\$2,321,667	-0.6%	\$72,523,915	\$71,035,277	\$1,488,639	-1.9%
29	3/21/2009	\$52,581,107	\$53,098,937	(\$517,830)	-2.3%	\$15,903,038	\$16,639,184	(\$736,146)	-0.7%	\$68,484,145	\$69,738,121	(\$1,253,976)	-1.9%
30	3/28/2009	\$52,560,961	\$53,933,689	(\$1,372,728)	-2.3%	\$16,094,933	\$17,698,625	(\$1,603,692)	-1.0%	\$68,655,894	\$71,632,314	(\$2,976,420)	-2.0%
31	4/4/2009	\$56,249,759	\$57,598,982	(\$1,349,223)	-2.3%	\$17,357,002	\$17,665,411	(\$308,409)	-1.0%	\$73,606,761	\$75,264,393	(\$1,657,632)	-2.0%
32	4/11/2009	\$54,440,987	\$53,954,185	\$486,802	-2.2%	\$17,660,600	\$15,860,784	\$1,799,816	-0.7%	\$72,101,587	\$69,814,969	\$2,286,618	-1.9%
33	4/18/2009	\$52,755,834	\$53,946,736	(\$1,190,902)	-2.2%	\$18,469,585	\$16,452,676	\$2,016,909	-0.3%	\$71,225,419	\$70,399,412	\$826,007	-1.8%
34	4/25/2009	\$51,450,968	\$51,533,006	(\$82,038)	-2.2%	\$20,216,898	\$16,873,949	\$3,342,950	0.3%	\$71,667,866	\$68,406,955	\$3,260,912	-1.6%
35	5/2/2009	\$52,327,090	\$53,250,568	(\$923,478)	-2.2%	\$23,520,573	\$18,202,103	\$5,318,471	1.2%	\$75,847,663	\$71,452,671	\$4,394,993	-1.4%
36	5/9/2009	\$53,214,412	\$54,060,849	(\$846,437)	-2.1%	\$16,241,207	\$18,422,562	(\$2,181,355)	0.8%	\$69,455,619	\$72,483,411	(\$3,027,792)	-1.4%
37	5/16/2009	\$50,785,227	\$54,010,641	(\$3,225,414)	-2.2%	\$15,990,544	\$20,728,360	(\$4,737,816)	0.0%	\$66,775,771	\$74,739,001	(\$7,963,230)	-1.7%
38	5/23/2009	\$56,567,077	\$50,377,032	\$6,190,045	-1.9%	\$15,874,447	\$15,461,384	\$413,063	0.1%	\$72,441,524	\$65,838,416	\$6,603,108	-1.4%
39	5/30/2009	\$55,359,239	\$49,545,080	\$5,814,159	-1.6%	\$16,040,196	\$15,175,370	\$864,826	0.2%	\$71,399,435	\$64,720,450	\$6,678,985	-1.1%
40	6/6/2009	\$60,250,125	\$53,702,986	\$6,547,139	-1.2%	\$16,301,599	\$15,982,166	\$319,434	0.2%	\$76,551,724	\$69,685,152	\$6,866,573	-0.9%

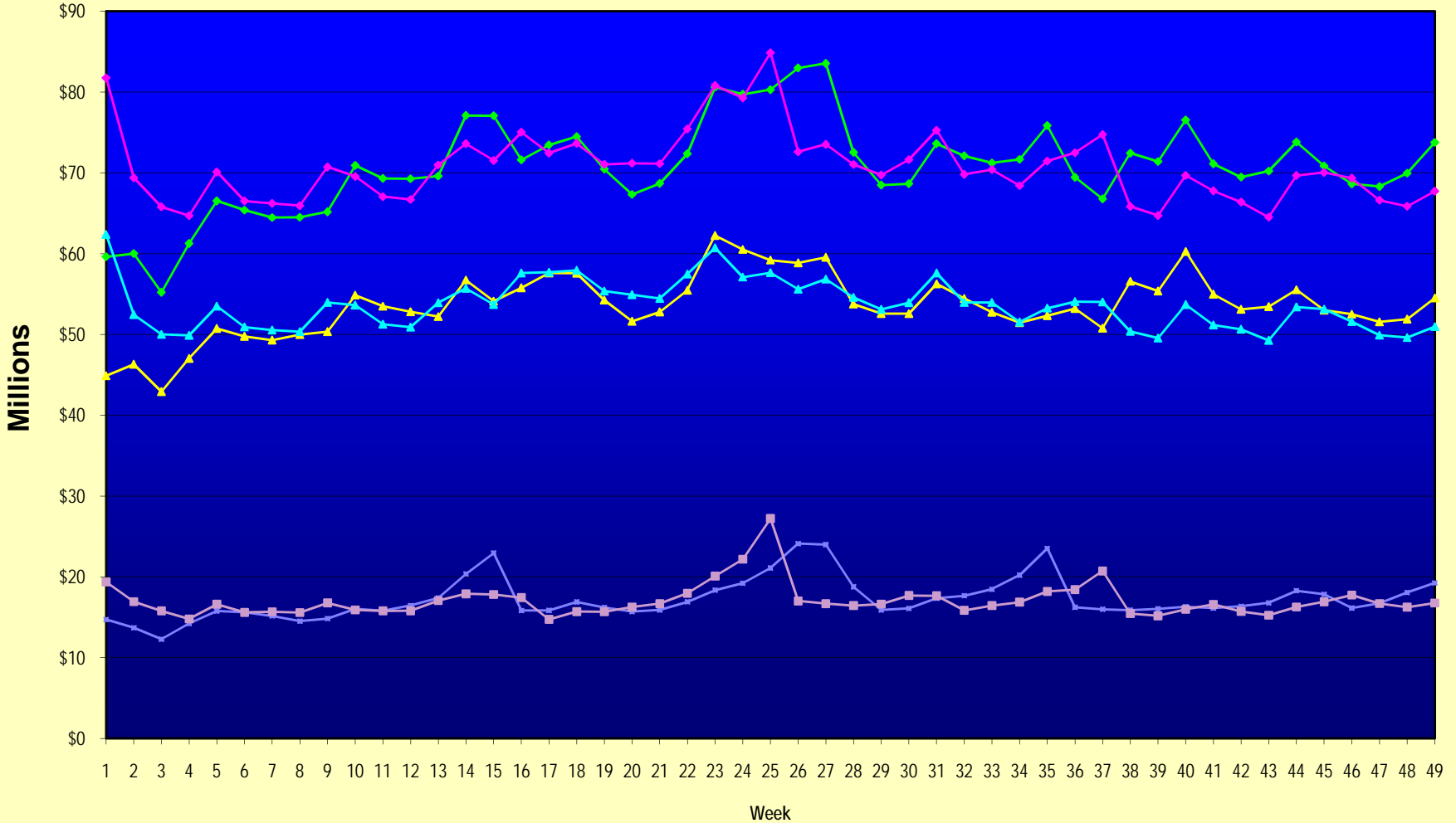
Note: Week 1 is not a full week of sales as this report is prepared on a Fiscal Year basis.

Texas Lottery Commission
Fiscal Year Over Year Change in Sales
Unaudited
FY 2009 Compared to FY 2008

Week	FY 2009 Week Ending	INSTANT TICKETS				ON-LINE GAMES				TOTAL SALES			
		FY 2009	FY 2008	Difference	% change - Cumulative Sales	FY 2009	FY 2008	Difference	% change - Cumulative Sales	FY 2009	FY 2008	Difference	% change - Cumulative Sales
41	6/13/2009	\$54,979,517	\$51,171,483	\$3,808,034	-1.0%	\$16,143,215	\$16,589,087	(\$445,872)	0.2%	\$71,122,732	\$67,760,570	\$3,362,162	-0.7%
42	6/20/2009	\$53,109,433	\$50,650,362	\$2,459,071	-0.9%	\$16,357,924	\$15,728,484	\$629,440	0.3%	\$69,467,357	\$66,378,846	\$3,088,511	-0.6%
43	6/27/2009	\$53,431,083	\$49,258,266	\$4,172,817	-0.7%	\$16,786,203	\$15,250,905	\$1,535,298	0.5%	\$70,217,286	\$64,509,171	\$5,708,115	-0.4%
44	7/4/2009	\$55,518,615	\$53,393,355	\$2,125,260	-0.6%	\$18,292,421	\$16,270,619	\$2,021,802	0.7%	\$73,811,036	\$69,663,974	\$4,147,062	-0.3%
45	7/11/2009	\$53,004,390	\$53,127,756	(\$123,366)	-0.6%	\$17,842,530	\$16,914,922	\$927,608	0.8%	\$70,846,920	\$70,042,678	\$804,242	-0.2%
46	7/18/2009	\$52,498,940	\$51,593,146	\$905,794	-0.5%	\$16,138,341	\$17,752,738	(\$1,614,397)	0.6%	\$68,637,281	\$69,345,884	(\$708,603)	-0.3%
47	7/25/2009	\$51,550,731	\$49,902,181	\$1,648,550	-0.5%	\$16,748,137	\$16,706,145	\$41,992	0.6%	\$68,298,868	\$66,608,326	\$1,690,542	-0.2%
48	8/1/2009	\$51,893,977	\$49,605,420	\$2,288,557	-0.4%	\$18,065,180	\$16,254,383	\$1,810,797	0.8%	\$69,959,157	\$65,859,803	\$4,099,354	-0.1%
49	8/8/2009	\$54,506,395	\$50,961,907	\$3,544,488	-0.2%	\$19,258,117	\$16,770,496	\$2,487,621	1.1%	\$73,764,512	\$67,732,403	\$6,032,109	0.1%
50	8/15/2009		\$49,452,511				\$16,749,487				\$66,201,998		
51	8/22/2009		\$49,249,518				\$17,286,302				\$66,535,820		
52	8/29/2009		\$49,468,928				\$18,109,997				\$67,578,925		
53	9/5/2009		\$6,054,239				\$493,109				\$6,547,348		
Total thru Current Week		\$2,623,719,843	\$2,629,610,899	(\$5,891,056)	-0.2%	\$844,092,347	\$835,002,964	\$9,089,383	1.1%	\$3,467,812,190	\$3,464,613,863	\$3,198,327	0.1%
Fiscal Year Total		\$2,623,719,843	\$2,783,836,095			\$844,092,347	\$887,641,858			\$3,467,812,190	\$3,671,477,953		

** FY 2009 includes 6 days; FY 2008 includes 8 days
FY 2009 average daily sales are \$9,242,258. Two days at average daily sales are \$18,484,516.

Texas Lottery Commission Fiscal Year Over Year Change in Sales



◆ Total Sales 2009
 ◆ Total Sales 2008
 ▲ Instant Tickets 2009
 ▲ Instant Tickets 2008
 ◆ On-Line Games 2009
 ■ On-Line Games 2008

Note: Week 1 is not a full week of sales as this report is prepared on a Fiscal Year basis.

Texas Lottery Commission
Instant Tickets by Price Point
Sales, Prize Expense, Sales Contribution and Payout Percentage With Year Over Year Changes
Unaudited

Fiscal Year	Price Point	# of Active Games	FY Sales	% of Instant Ticket Sales	Year over Year Change in Sales	FY Prize Expense	Year over Year Change in Prize Expense	FY Sales Contribution	Year over Year Change in Contribution	Average Prize Payout %	Year over Year Change in Payout %
2008	\$1.00	47	217,442,673	8.3%		130,673,165		\$86,769,508		60.1%	0.0%
thru	\$2.00	58	444,690,042	16.9%		290,429,240		\$154,260,802		65.3%	0.7%
8/9/2008	\$3.00	18	241,162,083	9.2%		158,510,830		\$82,651,253		65.7%	-0.1%
	\$5.00	50	725,896,301	27.6%		493,131,496		\$232,764,805		67.9%	-0.1%
	\$7.00	13	147,627,669	5.6%		100,394,821		\$47,232,848		68.0%	0.1%
	\$10.00	20	388,160,226	14.8%		271,530,945		\$116,629,281		70.0%	-0.8%
	\$20.00	10	209,491,860	8.0%		150,442,159		\$59,049,701		71.8%	-0.2%
	\$25.00	2	55,258,625	2.1%		40,121,721		\$15,136,904		72.6%	0.3%
	\$30.00	3	56,458,620	2.1%		40,872,359		\$15,586,261		72.4%	0.2%
	\$50.00	3	143,422,800	5.5%		103,495,260		\$39,927,540		72.2%	0.0%
Total		224	\$2,629,610,899			\$1,779,601,997		\$850,008,902		67.7%	0.2%
2009	\$1.00	46	224,301,780	8.5%		134,842,286		89,459,494		60.1%	0.0%
thru	\$2.00	43	426,595,189	16.3%		277,931,367		148,663,822		65.2%	-0.2%
8/8/2009	\$3.00	19	274,342,428	10.5%		179,943,660		94,398,768		65.6%	-0.2%
	\$5.00	49	797,472,002	30.4%		542,565,655		254,906,347		68.0%	0.1%
	\$7.00	9	128,915,479	4.9%		87,671,410		41,244,069		68.0%	0.0%
	\$10.00	21	362,914,650	13.8%		253,953,336		108,961,314		70.0%	0.0%
	\$20.00	9	285,122,160	10.9%		208,110,144		77,012,016		73.0%	1.7%
	\$25.00	1	2,372,325	0.1%		1,725,527		646,798		72.7%	0.2%
	\$30.00	3	10,023,630	0.4%		7,263,494		2,760,136		72.5%	0.1%
	\$50.00	4	111,660,200	4.3%		83,077,551		28,582,649		74.4%	3.1%
Total		204	\$2,623,719,843			\$1,777,084,429		\$846,635,414		67.7%	0.1%
Variance	\$1.00	-1	6,859,107		3.2%	4,169,122	3.2%	2,689,985	3.1%	0.02%	
2009 to	\$2.00	-15	-18,094,853		-4.1%	-12,497,873	-4.3%	-5,596,980	-3.6%	-0.16%	
2008	\$3.00	1	33,180,345		13.8%	21,432,829	13.5%	11,747,516	14.2%	-0.14%	
	\$5.00	-1	71,575,701		9.9%	49,434,160	10.0%	22,141,541	9.5%	0.10%	
	\$7.00	-4	-18,712,190		-12.7%	-12,723,411	-12.7%	-5,988,779	-12.7%	0.00%	
	\$10.00	1	-25,245,576		-6.5%	-17,577,609	-6.5%	-7,667,967	-6.6%	0.02%	
	\$20.00	-1	75,630,300		36.1%	57,667,984	38.3%	17,962,316	30.4%	1.18%	
	\$25.00	-1	-52,886,300		-95.7%	-38,396,195	-95.7%	-14,490,105	-95.7%	0.13%	
	\$30.00	0	-46,434,990		-82.2%	-33,608,865	-82.2%	-12,826,125	-82.3%	0.07%	
	\$50.00	1	-31,762,600		-22.1%	-20,417,710	-19.7%	-11,344,890	-28.4%	2.24%	
Total		-20	-\$5,891,056		-0.2%	-\$2,517,566	-0.1%	-\$3,373,486	-0.4%	0.06%	

Texas Lottery Commission
Instant Tickets by Price Point
Sales, Prize Expense, Sales Contribution and Payout Percentage With Year Over Year Changes
 Unaudited

Notes - Instant Ticket Variances

		FY 2009		FY 2008		Difference
Sales	\$1 - \$7		\$1,851,626,878		\$1,776,818,768	\$74,808,110
Prize Exp.	\$1 - \$7		\$1,222,954,378		\$1,173,139,551	\$49,814,827
Sales Cont.	\$1 - \$7		\$628,672,500		\$603,679,217	\$24,993,283
Prize Exp. %	\$1 - \$7		66.0%		66.0%	0.0%
		FY 2009		FY 2008		Difference
Sales	\$10 - \$50		\$772,092,965		\$852,792,131	-\$80,699,166
Prize Exp.	\$10 - \$50		\$554,130,051		\$606,462,445	-\$52,332,394
Sales Cont.	\$10 - \$50		\$217,962,914		\$246,329,686	-\$28,366,772
Prize Exp. %	\$10 - \$50		71.8%		71.1%	0.7%
		FY 2009		FY 2008		Difference
Sales	Instant		\$2,623,719,843		\$2,629,610,899	-\$5,891,056
Prize Exp.	Instant		\$1,777,084,429		\$1,779,601,997	-\$2,517,568
Sales Cont.	Instant		\$846,635,414		\$850,008,902	-\$3,373,488
Prize Exp. %	Instant		67.7%		67.7%	0.1%

		FY 2009		FY 2008		Difference
Sales	\$1 - \$10		\$2,214,541,528		\$2,164,978,994	\$49,562,534
Prize Exp.	\$1 - \$10		\$1,476,907,714		\$1,444,670,496	\$32,237,217
Sales Cont.	\$1 - \$10		\$737,633,814		\$720,308,498	\$17,325,317
Prize Exp. %	\$1 - \$10		66.7%		66.7%	0.0%
		FY 2009		FY 2008		Difference
Sales	\$20 - \$50		\$409,178,315		\$464,631,905	-\$55,453,590
Prize Exp.	\$20 - \$50		\$300,176,715		\$334,931,500	-\$34,754,785
Sales Cont.	\$20 - \$50		\$109,001,600		\$129,700,405	-\$20,698,805
Prize Exp. %	\$20 - \$50		73.4%		72.1%	1.3%
		FY 2009		FY 2008		Difference
Sales	Instant		\$2,623,719,843		\$2,629,610,899	-\$5,891,056
Prize Exp.	Instant		\$1,777,084,429		\$1,779,601,997	-\$2,517,568
Sales Cont.	Instant		\$846,635,414		\$850,008,902	-\$3,373,488
Prize Exp. %	Instant		67.7%		67.7%	0.1%

Texas Lottery Commission
Weekly Sales Summary
& Comparison to Previous Week
 Unaudited

	Week Ending 08/08/2009	% of Sales	Week Ending 08/01/2009	% of Sales	\$ change	% change
	<u>THIS WEEK</u>		<u>LAST WEEK</u>			
Total Sales	<u>\$73,764,512</u>		<u>\$69,959,157</u>		<u>\$3,805,356</u>	5.44%
Instant Tickets	<u>\$54,506,395</u>	73.9%	<u>\$51,893,977</u>	74.2%	<u>\$2,612,418</u>	5.03%
Lotto Texas	\$4,871,972	6.6%	\$4,656,337	6.7%	\$215,635	4.63%
Pick 3	\$5,499,613	7.5%	\$5,243,297	7.5%	\$256,317	4.89%
Pick 3 Sum It Up	\$106,250	0.1%	\$101,341	0.1%	\$4,909	4.84%
Cash 5	\$1,315,589	1.8%	\$1,269,573	1.8%	\$46,016	3.62%
Texas Two Step	\$807,755	1.1%	\$1,072,219	1.5%	-\$264,464	-24.67%
Mega Millions	\$4,582,536	6.2%	\$3,702,912	5.3%	\$879,624	23.75%
Megaplier	\$1,016,543	1.4%	\$972,993	1.4%	\$43,550	4.48%
Daily 4	\$958,392	1.3%	\$947,498	1.4%	\$10,894	1.15%
Daily 4 Sum It Up	\$99,468	0.1%	\$99,010	0.1%	\$458	0.46%
Total Online Sales	<u>\$19,258,117</u>		<u>\$18,065,180</u>		<u>\$1,192,938</u>	6.60%

* Totals may not sum due to rounding.

Texas Lottery Commission
Weekly Sales Summary
Unaudited

INSTANT TICKETS
TOP TEN SELLING GAMES

For the Week Ending : 08/08/2009

Rank	Price Point	Game	Sales (Millions)
1	\$ 20	\$500,000,000 BLOCKBUSTER	\$ 8.102
2	\$ 5	TAKE 5	\$ 3.481
3	\$ 10	WILD 10'S	\$ 2.675
4	\$ 7	BEST OF 7'S	\$ 2.069
5	\$ 5	PURE GOLD	\$ 2.016
6	\$ 3	BONUS CASHWORD	\$ 1.983
7	\$ 3	DOLLAR SIGNS	\$ 1.938
8	\$ 50	\$140,000,000 EXTREME PAYOUT	\$ 1.758
9	\$ 10	SUMMER SPECTACULAR	\$ 1.707
10	\$ 10	SET FOR LIFE	\$ 1.615

Texas Lottery Commission
Prize Payout Tracking Report
Unaudited

Through Week Ending 08/08/2009

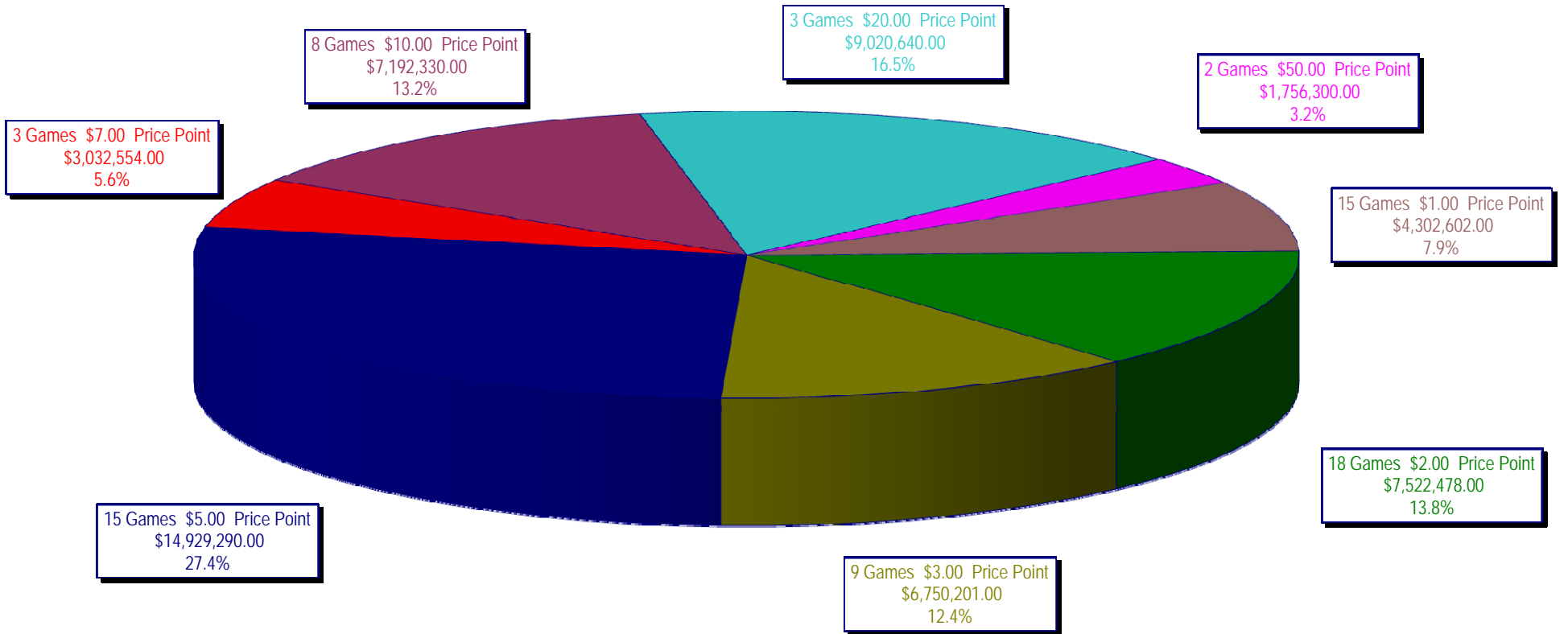
On-Line Sales

		FY Sales Through Week Ending 8/8/2009		FY Prize Expense Through Week Ending 8/8/2009	Actual* Prize Payout	Base Payout (Prize Pool)
Lotto	\$	183,532,002	\$	92,356,800	50.32%	50.00%
Pick 3		268,987,462		130,881,970	48.66%	50.00%
Pick 3 Sum It Up		5,601,629		2,508,692	44.79%	50.00%
Cash 5		66,642,234		33,426,489	50.16%	50.00%
Texas Two-Step		47,201,571		24,776,440	52.49%	50.00%
Mega Millions		181,428,018		90,697,372	49.99%	50.00%**
Megaplier		41,603,214		20,697,085	49.75%	N/A
Daily 4		43,973,786		21,656,275	49.25%	50.00%
Daily 4-Sum It Up		5,122,431		2,180,794	42.57%	50.00%
Totals	\$	844,092,347	\$	419,181,917	49.66%	

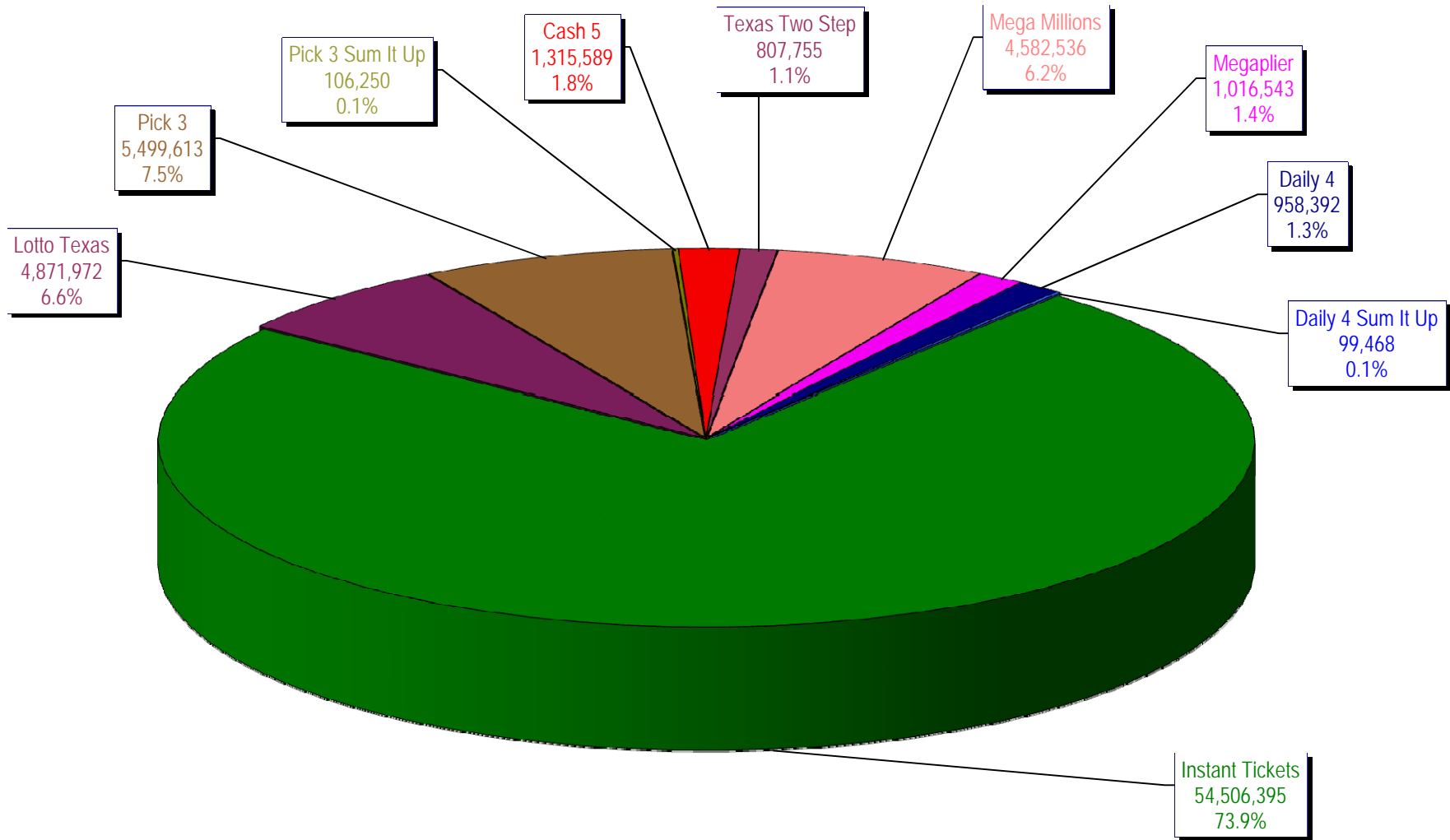
* Before Unclaimed Prizes

** Estimated; depends on # of guaranteed prizes won in Texas

Texas Lottery Commission
Instant Ticket Sales
For the Week Ending 08/08/2009
(Unaudited)



Texas Lottery Commission
All Game Sales
For the Week Ending 08/08/2009
(Unaudited)



Texas Lottery Commission - Weekly Sales Summary for FY 2009 (Unaudited)

Week Ended	Instant Games	New Games & Dates	Lotto Texas	Jackpot		Pick 3	Pick 3 Sum It Up	Cash 5	Texas Two Step	Jackpot		Mega Millions	Jackpot		Megaplier	Daily 4	Daily 4 Sum It Up	Total	Per Cap.
				W	S					M/T	TH/F		T	F					
9/6/2008	50,944,343.00	1108 (\$2,N), 1088 (\$3, N) - 9/01/08	3,378,718.00	5	6	5,436,414.00	122,123.00	1,396,622.00	890,346.00	350	450	2,445,490.00	12	16	649,090.00	786,482.50	109,834.00	66,159,462.50	2.77
9/13/2008	46,309,551.00	1109 (\$1,N), 1098 (\$5, N) - 9/08/08	3,020,089.00	7	8	4,705,585.50	105,899.00	1,279,412.00	856,199.00	600	200	2,327,214.00	24	12	617,672.00	696,633.00	96,156.50	60,014,411.00	2.51
9/20/2008	42,923,171.00	0	3,054,093.00	9	10	4,121,734.50	90,718.00	1,155,350.00	637,792.00	225	250	1,978,127.00	15	12	540,225.00	627,210.00	86,013.50	55,214,434.00	2.31
9/27/2008	47,042,801.00	1111 (\$2,N), 1099 (\$5, N) - 9/22/08	3,427,671.00	11	12	4,821,563.00	103,189.50	1,288,062.00	834,307.00	275	425	2,322,862.00	16	24	617,085.00	709,741.50	97,858.00	61,265,140.00	2.56
10/4/2008	50,747,162.00	1113 (\$1,N) 9/29/08	3,675,683.00	13	14	5,305,711.00	116,332.50	1,369,040.00	1,074,874.00	525	650	2,671,927.00	32	42	693,845.00	770,782.50	106,277.00	66,531,634.00	2.78
10/11/2008	49,763,789.00	0	3,732,365.00	15	16	5,287,094.00	114,665.50	1,370,334.00	1,305,250.00	800	975	2,306,070.00	12	16	622,120.00	778,204.00	106,395.00	65,386,286.50	2.74
10/18/2008	49,299,053.00	1117 (\$3,N), 1118 (\$20,N) - 10/13/08	3,780,438.00	17	18	5,149,258.00	109,530.00	1,355,601.00	741,849.00	200	200	2,500,644.00	23	32	652,198.00	776,366.00	102,056.00	64,466,993.00	2.70
10/25/2008	49,977,581.00	1119 (\$1,N), 1120 (\$5,N) - 10/20/08	3,210,762.00	4	5	5,099,671.00	107,104.50	1,339,079.00	789,649.00	225	275	2,456,965.00	42	12	641,206.00	778,434.00	102,972.50	64,503,424.00	2.70
11/1/2008	50,346,542.00	1121 (\$2,N), 1122 (\$10,N) - 10/27/08	3,325,641.00	6	7	5,234,124.00	109,983.00	1,339,046.00	946,035.00	375	475	2,347,596.00	16	23	626,235.00	805,572.00	104,612.50	65,185,386.50	2.73
11/8/2008	54,860,087.00	1123 (\$3,N), 1124 (\$7,N) - 11/03/08; 1103 (\$3,N) - 11/05/08; 1063 (\$3,N) - 11/07/08	3,290,417.00	4	5	5,686,701.00	118,495.00	1,397,985.00	1,158,101.00	625	750	2,729,302.50	31	42	692,662.00	871,230.00	112,175.50	70,917,156.00	2.97
11/15/2008	53,484,812.00	1125 (\$1, N), 1126 (\$5,N) - 11/10/08	3,336,934.00	6	7	5,459,984.00	112,884.00	1,366,024.00	766,955.00	200	225	3,102,251.00	51	62	749,736.00	830,957.00	104,094.00	69,314,631.00	2.90
11/22/2008	52,806,511.00	0	3,452,481.00	8	9	5,329,591.00	108,861.50	1,358,271.00	743,950.00	200	200	3,666,517.00	73	86	847,201.00	849,077.50	104,797.50	69,267,258.50	2.90
11/29/2008	52,199,741.00	1127 (\$2,N), 1128 (\$5,N) - 11/24/08	3,585,374.00	10	11	5,340,783.50	111,443.00	1,315,233.00	686,077.00	200	225	4,441,715.00	96	111	968,906.00	845,475.50	102,569.00	69,597,317.00	2.91
12/6/2008	56,731,851.00	0	3,794,991.00	12	13	5,752,593.00	121,663.50	1,416,446.00	780,328.00	250	200	6,238,355.00	128	146	1,270,214.00	881,841.50	107,357.00	77,095,640.00	3.23
12/13/2008	54,109,617.00	1129 (\$1, N) - 12/08/08	3,315,658.00	4	5	5,580,770.00	114,295.50	1,384,858.00	766,893.00	225	250	9,150,536.00	170	207	1,691,121.00	846,176.50	101,919.50	77,061,844.50	3.22
12/20/2008	55,777,328.00	1104 (\$2,N), 1105 (\$5,N), 1106 (\$10,N) - 12/15/08	3,432,340.00	6	7	5,741,120.00	116,075.50	1,401,805.00	741,945.00	200	200	2,736,234.00	12	16	687,875.00	871,579.50	104,543.00	71,610,845.00	3.00
12/27/2008	57,597,885.00	1077 (\$1,N), 1110 (\$1,N) - 12/22/08	3,582,169.00	8	4	5,628,081.50	115,323.00	1,340,590.00	708,906.00	225	250	2,842,167.00	22	29	706,042.00	828,346.00	100,146.00	73,449,655.50	3.07
1/3/2009	57,582,115.00	0	3,784,763.00	5	6	5,690,220.50	120,519.50	1,406,807.00	934,000.00	325	525	3,190,457.00	37	46	780,850.00	885,674.00	106,736.50	74,482,142.50	3.12
1/10/2009	54,250,945.00	1135 (\$2,N), 1136 (\$5,N) - 1/5/09	3,582,400.00	7	8	5,476,890.00	116,674.50	1,403,531.00	1,267,847.00	675	900	2,701,275.00	12	16	681,574.00	868,919.00	104,109.50	70,454,165.00	2.95
1/17/2009	51,625,339.00	1137 (\$1,N), 1138 (\$3,N) - 1/12/09	3,668,302.50	9	10	5,443,159.00	112,605.00	1,387,958.00	778,563.00	200	200	2,683,707.00	22	12	675,416.00	852,987.00	98,907.50	67,326,944.00	2.82
1/24/2009	52,789,573.00	1115 (\$2,N), 1116 (\$5,N) - 1/19/09	3,723,835.50	11	12	5,514,547.50	115,827.50	1,376,695.00	860,483.00	225	325	2,692,611.00	16	21	676,936.00	836,996.00	99,541.00	68,687,045.50	2.87
1/31/2009	55,453,471.00	1080 (\$1,N), 1024 (\$20,R) - 1/26/09; 1062 (\$5,N) - 1/28/09	3,837,299.00	13	14	5,700,714.50	121,794.50	1,403,756.00	1,070,879.00	450	600	3,002,883.00	30	40	731,253.00	925,937.50	113,755.50	72,361,743.00	3.03
2/7/2009	62,247,711.00	1035 (\$2,N), 1144 (\$5,N), 1058 (\$10, N) - 2/2/09	4,092,117.00	15	16	6,336,717.00	134,543.00	1,481,812.00	842,746.00	200	225	3,509,032.00	50	60	829,550.00	1,007,529.00	120,267.50	80,602,024.50	3.37
2/14/2009	60,509,056.00	1146 (\$7,N), 1089 (\$1,N) - 2/9/09	4,119,193.00	17	18	6,363,028.00	133,901.50	1,445,616.00	1,013,987.00	325	450	4,082,572.00	73	85	928,813.00	1,010,898.50	120,068.50	79,727,133.50	3.34
2/21/2009	59,194,623.00	1046 (\$2,N), 1140 (\$5,N) - 2/16/09	4,326,401.00	19	20	6,038,807.50	128,493.00	1,439,312.00	1,268,803.00	600	750	5,614,471.00	103	120	1,178,133.00	988,075.00	115,703.50	80,292,822.00	3.36
2/28/2009	58,857,216.00	1132 (\$10,N), 1149 (\$1,N) - 2/23/09	4,526,304.00	21	22	6,084,457.50	128,979.50	1,439,607.00	1,668,414.00	925	1,150	7,676,975.00	145	171	1,504,895.00	973,121.00	114,171.00	82,974,140.00	3.47

Texas Lottery Commission - Weekly Sales Summary for FY 2009 (Unaudited)

Week Ended	Instant Games	New Games & Dates	Lotto Texas	Jackpot		Pick 3	Pick 3 Sum It Up	Cash 5	Texas Two Step	Jackpot		Mega Millions	Jackpot		Megaplier	Daily 4	Daily 4 Sum It Up	Total	Per Cap.
				W	S					M/T	TH/F		T	F					
3/7/2009	59,552,257.00	0	4,928,440.00	23	25	6,133,789.00	128,599.00	1,487,185.00	1,984,358.00	1,350	1,600	6,898,457.00	212	12	1,349,427.00	971,644.50	113,236.00	83,547,392.50	3.50
3/14/2009	53,754,084.00	1139 (\$2.N), 1079 (\$5.N) - 3/09/09	4,752,592.00	26	28	5,850,166.00	120,684.50	1,418,127.00	2,112,571.00	1,900	2,150	2,782,204.00	16	26	698,214.00	925,615.00	109,657.50	72,523,915.00	3.03
3/21/2009	52,581,107.00	1107 (\$1.N), 1154 (\$3.N), 1057 (\$10.N) - 3/16/09; 1102 (\$2.N) - 3/19/09	3,437,818.00	4	5	5,776,041.50	117,294.00	1,399,720.00	880,620.00	200	225	2,595,785.00	12	16	653,517.00	934,185.00	108,057.50	68,484,145.00	2.87
3/28/2009	52,560,961.00	1130 (\$5.N), 1150 (\$10.N) - 3/23/09	3,486,731.00	6	7	5,633,454.50	114,269.50	1,381,550.00	901,673.00	300	200	2,845,499.00	24	34	701,971.00	925,093.50	104,691.50	68,655,894.00	2.87
4/4/2009	56,249,759.00	1151 (\$2.N), 1101 (\$50.N) - 3/30/09	3,746,083.00	8	9	5,893,043.50	122,332.00	1,429,598.00	940,614.00	225	300	3,321,274.00	43	54	794,282.00	998,042.00	111,733.50	73,606,761.00	3.08
4/11/2009	54,440,987.00	1153 (\$2.N) - 4/07/09; 1152 (\$3.N) - 4/08/09	3,594,176.00	10	4	5,893,551.00	120,491.50	1,394,879.00	933,807.00	425	200	3,772,700.00	65	78	857,890.00	987,127.50	105,977.50	72,101,586.50	3.02
4/18/2009	52,755,834.00	1145 (\$1.N), 1148 (\$5.N) - 4/13/09	3,462,217.00	5	6	5,627,572.00	117,123.50	1,374,682.00	829,493.00	225	200	4,960,982.00	92	109	1,040,136.00	957,161.00	100,218.50	71,225,419.00	2.98
4/25/2009	51,450,968.00	1051 (\$7.N) - 4/20/09	3,517,624.00	7	8	5,408,672.50	117,314.50	1,347,754.00	876,206.00	225	300	6,614,120.95	130	155	1,298,021.00	937,777.00	99,408.50	71,667,866.45	3.00
5/2/2009	52,327,090.00	1161 (\$1.N), 1081 (\$5.N) - 4/27/09	3,679,438.00	9	10	5,512,770.50	113,755.50	1,362,174.00	880,888.00	425	200	9,277,686.00	181	225	1,653,107.00	937,874.00	102,880.00	75,847,663.00	3.17
5/9/2009	53,214,412.00	0	3,554,635.00	11	4	5,603,106.00	118,185.50	1,389,454.00	823,436.00	225	200	2,961,748.00	12	17	718,169.00	967,592.00	104,881.00	69,455,618.50	2.91
5/16/2009	50,785,227.00	1131 (\$2.N), 1134 (\$5.N) - 5/11/09 1165 (\$1.N), 1114 (\$20.N) - 5/18/09; 1156 (\$1.N) - 5/19/09; 1153 (\$2.N) - 5/20/09	3,332,475.00	5	6	5,417,197.00	112,501.00	1,356,843.00	842,436.00	225	275	3,116,696.00	28	38	748,141.00	959,922.50	104,332.00	66,775,770.50	2.79
5/23/2009	56,567,077.00	1049 (\$3.N) - 5/25/09	3,425,065.00	7	8	5,363,150.50	111,143.50	1,356,979.00	1,061,946.00	400	525	2,790,741.00	12	16	694,815.00	967,375.50	103,231.00	72,441,523.50	3.03
5/30/2009	55,359,239.00	1112 (\$5.N) - 6/1/09	3,480,479.00	9	10	5,329,739.50	108,222.50	1,314,598.00	1,173,008.00	650	800	2,871,590.00	25	35	705,366.00	957,423.50	99,769.00	71,399,434.50	2.99
6/6/2009	60,250,125.00	1173 (\$1.N), 1090 (\$10.N) - 06/29/09	3,656,108.00	11	12	5,806,294.00	117,692.00	1,379,840.00	833,645.00	200	225	2,696,889.00	12	17	684,660.00	1,020,540.50	105,930.50	76,551,724.00	3.20
6/13/2009	54,979,517.00	1155 (\$3.N), 1158 (\$5.N) - 07/06/09	3,639,064.00	13	14	5,434,316.00	109,481.50	1,323,811.00	960,321.00	300	400	2,892,403.00	25	36	712,936.00	967,447.50	103,434.50	71,122,731.50	2.98
6/20/2009	53,109,433.00	1177 (\$1.N), 1083 (\$7.N) - 07/20/09	3,722,083.00	15	16	5,298,164.50	106,370.50	1,295,187.00	914,417.00	525	200	3,203,712.00	46	57	763,056.00	955,438.50	99,495.00	69,467,356.50	2.91
6/27/2009	53,431,083.00	1171 (\$2.N), 1260 (\$10.N) - 07/13/09	3,826,811.00	17	18	5,294,301.50	105,363.00	1,280,460.00	779,414.00	225	200	3,619,796.00	68	81	829,739.00	951,028.50	99,289.50	70,217,285.50	2.94
7/4/2009	55,518,615.00	1177 (\$1.N), 1083 (\$7.N) - 07/20/09	3,978,976.00	19	20	5,365,381.00	109,234.50	1,301,272.00	834,396.00	225	275	4,619,366.00	94	113	987,368.00	990,473.50	105,953.50	73,811,035.50	3.09
7/11/2009	53,004,390.00	1171 (\$2.N), 1260 (\$10.N) - 07/13/09	4,220,775.00	21	22	5,261,293.50	108,423.50	1,309,778.00	997,751.00	375	500	3,994,574.00	133	12	883,721.00	964,339.00	101,874.50	70,846,919.50	2.96
7/18/2009	52,498,940.00	1177 (\$1.N), 1083 (\$7.N) - 07/20/09	4,285,057.00	23	25	5,041,176.00	104,049.00	1,284,914.00	785,813.00	200	225	2,831,976.00	16	27	760,753.00	944,560.50	100,042.00	68,637,280.50	2.87
7/25/2009	51,550,731.00	1167 (\$3.N), 1178 (\$5.N) - 07/27/09	4,330,422.00	26	27	5,093,324.00	102,837.50	1,265,233.00	893,643.00	275	375	3,157,506.00	37	48	841,070.00	964,018.00	100,083.50	68,298,868.00	2.86
8/1/2009	51,893,977.00	1179 (\$2.N) - 08/03/09	4,656,337.00	30	31	5,243,296.50	101,341.00	1,269,573.00	1,072,219.00	500	625	3,702,912.00	60	73	972,993.00	947,498.00	99,010.00	69,959,156.50	2.93
8/8/2009	54,506,395.00		4,871,972.00	32	34	5,499,613.00	106,250.00	1,315,589.00	807,755.00	200	225	4,582,536.00	84	102	1,016,543.00	958,391.50	99,467.50	73,764,512.00	3.03
weekly change	5.03%		4.63%			4.89%	4.84%	3.62%	-24.67%			23.75%			4.48%	1.15%	0.46%	5.44%	
	SALES		SALES			SALES	SALES	SALES	SALES			SALES			SALES	SALES	SALES	SALES	% of Sales
Startup to date	36,104,305,845.00		10,462,629,049.00			3,567,706,414.50	12,087,459.00	2,185,798,244.00	473,467,289.00			1,107,566,613.45			259,811,248.00	86,190,757.00	13,461,234.50	54,481,158,125.45	100.0%
Calendar Year to date	1,722,402,170.00		123,259,757.00			176,546,915.50	175,670.50	43,059,790.00	32,308,152.00			123,609,709.95			27,943,433.00	29,983,098.50	3,320,427.00	2,282,609,123.45	100.0%
Fiscal Year to date 2009	2,623,719,843.00		183,532,002.00			268,987,462.00	5,601,629.00	66,642,234.00	47,201,571.00			181,428,018.45			41,603,214.00	43,973,785.50	5,122,431.00	3,467,812,189.95	100.0%