



WEEKLY SALES SUMMARY

Unaudited

Week Ending: 08/15/2009

Texas Lottery Commission
Fiscal Year to Date Sales Comparison
Unaudited

Through the week ending 08/15/2009 (50 weeks)

Sales by Game	FY 2007 *	FY 2008 **	FY 2009	\$ Change		% Change	
				FY 2009 to FY 2007	FY 2009 to FY 2008	FY 2009 to FY 2007	FY 2009 to FY 2008
Instants	\$ 2,763,658,155	\$ 2,679,063,410	\$ 2,675,486,373	\$ -88,171,782	\$ -3,577,037	-3.2%	-0.1%
Lotto Texas	225,104,513	196,103,473	188,571,005	-36,533,508	-7,532,468	-16.2%	-3.8%
Pick 3	302,225,450	275,922,675	274,047,746	-28,177,704	-1,874,930	-9.3%	-0.7%
Pick 3 Sum It Up	-	6,254,630	5,699,856	5,699,856	-554,774	-	-8.9%
Cash 5	83,424,429	72,885,298	67,918,703	-15,505,726	-4,966,595	-18.6%	-6.8%
Texas Two Step	46,906,501	46,363,090	48,120,962	1,214,461	1,757,872	2.6%	3.8%
Mega Millions	169,407,893	165,969,201	187,637,537	18,229,644	21,668,336	10.8%	13.1%
Megaplier	40,223,310	39,460,520	42,826,738	2,603,428	3,366,218	6.5%	8.5%
Daily 4	-	40,669,191	44,881,134	44,881,134	4,211,944	-	10.4%
Daily 4 Sum It Up	-	8,124,374	5,216,960	5,216,960	-2,907,414	-	-35.8%
Total	\$ 3,630,950,251	\$ 3,530,815,861	\$ 3,540,407,013	\$ -90,543,238	\$ 9,591,152	-2.5%	0.3%

* 3 extra days in 2007 ** 2 extra days in 2008

Texas Lottery Commission
Fiscal Year Over Year Change in Sales
Unaudited
FY 2009 Compared to FY 2008

Week	FY 2009 Week Ending	INSTANT TICKETS				ON-LINE GAMES				TOTAL SALES			
		FY 2009	FY 2008	Difference	% change - Cumulative Sales	FY 2009	FY 2008	Difference	% change - Cumulative Sales	FY 2009	FY 2008	Difference	% change - Cumulative Sales
1	9/6/2008**	\$44,890,104	\$62,376,229	(\$17,486,125)	-28.0%	\$14,722,011	\$19,372,224	(\$4,650,213)	-24.0%	\$59,612,115	\$81,748,453	(\$22,136,338)	-27.1%
2	9/13/2008	\$46,309,551	\$52,458,866	(\$6,149,315)	-20.6%	\$13,704,860	\$16,926,163	(\$3,221,303)	-21.7%	\$60,014,411	\$69,385,029	(\$9,370,618)	-20.8%
3	9/20/2008	\$42,923,171	\$49,998,934	(\$7,075,763)	-18.6%	\$12,291,263	\$15,792,283	(\$3,501,020)	-21.8%	\$55,214,434	\$65,791,217	(\$10,576,783)	-19.4%
4	9/27/2008	\$47,042,801	\$49,894,175	(\$2,851,374)	-15.6%	\$14,222,339	\$14,800,514	(\$578,175)	-17.9%	\$61,265,140	\$64,694,689	(\$3,429,549)	-16.2%
5	10/4/2008	\$50,747,162	\$53,486,863	(\$2,739,701)	-13.5%	\$15,784,472	\$16,618,430	(\$833,958)	-15.3%	\$66,531,634	\$70,105,293	(\$3,573,659)	-14.0%
6	10/11/2008	\$49,763,789	\$50,918,020	(\$1,154,231)	-11.7%	\$15,622,498	\$15,601,410	\$21,088	-12.9%	\$65,386,287	\$66,519,430	(\$1,133,143)	-12.0%
7	10/18/2008	\$49,299,053	\$50,532,253	(\$1,233,200)	-10.5%	\$15,167,940	\$15,682,666	(\$514,726)	-11.6%	\$64,466,993	\$66,214,919	(\$1,747,926)	-10.7%
8	10/25/2008	\$49,977,581	\$50,347,450	(\$369,869)	-9.3%	\$14,525,843	\$15,586,516	(\$1,060,673)	-11.0%	\$64,503,424	\$65,933,966	(\$1,430,542)	-9.7%
9	11/1/2008	\$50,346,542	\$53,953,733	(\$3,607,191)	-9.0%	\$14,838,845	\$16,775,983	(\$1,937,139)	-11.1%	\$65,185,387	\$70,729,716	(\$5,544,330)	-9.5%
10	11/8/2008	\$54,860,087	\$53,635,090	\$1,224,997	-7.9%	\$16,057,069	\$15,912,791	\$144,278	-9.9%	\$70,917,156	\$69,547,881	\$1,369,275	-8.3%
11	11/15/2008	\$53,484,812	\$51,254,401	\$2,230,411	-6.8%	\$15,829,819	\$15,797,076	\$32,744	-9.0%	\$69,314,631	\$67,051,477	\$2,263,155	-7.3%
12	11/22/2008	\$52,806,511	\$50,897,817	\$1,908,694	-5.9%	\$16,460,748	\$15,801,720	\$659,028	-7.9%	\$69,267,259	\$66,699,537	\$2,567,722	-6.4%
13	11/29/2008	\$52,199,741	\$53,913,115	(\$1,713,374)	-5.7%	\$17,397,576	\$17,055,505	\$342,072	-7.1%	\$69,597,317	\$70,968,620	(\$1,371,303)	-6.0%
14	12/6/2008	\$56,731,851	\$55,702,697	\$1,029,154	-5.1%	\$20,363,789	\$17,900,717	\$2,463,073	-5.5%	\$77,095,640	\$73,603,414	\$3,492,227	-5.2%
15	12/13/2008	\$54,109,617	\$53,703,516	\$406,101	-4.7%	\$22,952,228	\$17,820,841	\$5,131,387	-3.0%	\$77,061,845	\$71,524,357	\$5,537,488	-4.3%
16	12/20/2008	\$55,777,328	\$57,592,769	(\$1,815,441)	-4.6%	\$15,833,517	\$17,436,233	(\$1,602,716)	-3.4%	\$71,610,845	\$75,029,002	(\$3,418,157)	-4.3%
17	12/27/2008	\$57,597,885	\$57,696,003	(\$98,118)	-4.3%	\$15,851,771	\$14,743,680	\$1,108,091	-2.9%	\$73,449,656	\$72,439,683	\$1,009,973	-4.0%
18	1/3/2009	\$57,582,115	\$57,935,952	(\$353,837)	-4.1%	\$16,900,028	\$15,704,450	\$1,195,578	-2.3%	\$74,482,143	\$73,640,402	\$841,741	-3.7%
19	1/10/2009	\$54,250,945	\$55,360,542	(\$1,109,597)	-4.0%	\$16,203,220	\$15,691,540	\$511,680	-2.0%	\$70,454,165	\$71,052,082	(\$597,917)	-3.5%
20	1/17/2009	\$51,625,339	\$54,920,166	(\$3,294,827)	-4.1%	\$15,701,605	\$16,259,669	(\$558,064)	-2.1%	\$67,326,944	\$71,179,835	(\$3,852,891)	-3.6%
21	1/24/2009	\$52,789,573	\$54,439,890	(\$1,650,317)	-4.1%	\$15,897,473	\$16,691,724	(\$794,251)	-2.2%	\$68,687,046	\$71,131,614	(\$2,444,568)	-3.6%
22	1/31/2009	\$55,453,471	\$57,464,382	(\$2,010,911)	-4.0%	\$16,908,272	\$17,968,227	(\$1,059,955)	-2.4%	\$72,361,743	\$75,432,609	(\$3,070,866)	-3.7%
23	2/7/2009	\$62,247,711	\$60,715,019	\$1,532,692	-3.7%	\$18,354,314	\$20,097,338	(\$1,743,025)	-2.7%	\$80,602,025	\$80,812,357	(\$210,333)	-3.5%
24	2/14/2009	\$60,509,056	\$57,093,143	\$3,415,913	-3.3%	\$19,218,078	\$22,179,908	(\$2,961,831)	-3.3%	\$79,727,134	\$79,273,051	\$454,083	-3.3%
25	2/21/2009	\$59,194,623	\$57,627,047	\$1,567,576	-3.0%	\$21,098,199	\$27,230,539	(\$6,132,340)	-4.5%	\$80,292,822	\$84,857,586	(\$4,564,764)	-3.4%
26	2/28/2009	\$58,857,216	\$55,591,667	\$3,265,549	-2.7%	\$24,116,924	\$17,016,118	\$7,100,806	-2.8%	\$82,974,140	\$72,607,785	\$10,366,355	-2.7%
27	3/7/2009	\$59,552,257	\$56,837,481	\$2,714,776	-2.4%	\$23,995,136	\$16,690,193	\$7,304,943	-1.1%	\$83,547,393	\$73,527,674	\$10,019,719	-2.1%
28	3/14/2009	\$53,754,084	\$54,587,112	(\$833,028)	-2.4%	\$18,769,831	\$16,448,165	\$2,321,667	-0.6%	\$72,523,915	\$71,035,277	\$1,488,639	-1.9%
29	3/21/2009	\$52,581,107	\$53,098,937	(\$517,830)	-2.3%	\$15,903,038	\$16,639,184	(\$736,146)	-0.7%	\$68,484,145	\$69,738,121	(\$1,253,976)	-1.9%
30	3/28/2009	\$52,560,961	\$53,933,689	(\$1,372,728)	-2.3%	\$16,094,933	\$17,698,625	(\$1,603,692)	-1.0%	\$68,655,894	\$71,632,314	(\$2,976,420)	-2.0%
31	4/4/2009	\$56,249,759	\$57,598,982	(\$1,349,223)	-2.3%	\$17,357,002	\$17,665,411	(\$308,409)	-1.0%	\$73,606,761	\$75,264,393	(\$1,657,632)	-2.0%
32	4/11/2009	\$54,440,987	\$53,954,185	\$486,802	-2.2%	\$17,660,600	\$15,860,784	\$1,799,816	-0.7%	\$72,101,587	\$69,814,969	\$2,286,618	-1.9%
33	4/18/2009	\$52,755,834	\$53,946,736	(\$1,190,902)	-2.2%	\$18,469,585	\$16,452,676	\$2,016,909	-0.3%	\$71,225,419	\$70,399,412	\$826,007	-1.8%
34	4/25/2009	\$51,450,968	\$51,533,006	(\$82,038)	-2.2%	\$20,216,898	\$16,873,949	\$3,342,950	0.3%	\$71,667,866	\$68,406,955	\$3,260,912	-1.6%
35	5/2/2009	\$52,327,090	\$53,250,568	(\$923,478)	-2.2%	\$23,520,573	\$18,202,103	\$5,318,471	1.2%	\$75,847,663	\$71,452,671	\$4,394,993	-1.4%
36	5/9/2009	\$53,214,412	\$54,060,849	(\$846,437)	-2.1%	\$16,241,207	\$18,422,562	(\$2,181,355)	0.8%	\$69,455,619	\$72,483,411	(\$3,027,792)	-1.4%
37	5/16/2009	\$50,785,227	\$54,010,641	(\$3,225,414)	-2.2%	\$15,990,544	\$20,728,360	(\$4,737,816)	0.0%	\$66,775,771	\$74,739,001	(\$7,963,230)	-1.7%
38	5/23/2009	\$56,567,077	\$50,377,032	\$6,190,045	-1.9%	\$15,874,447	\$15,461,384	\$413,063	0.1%	\$72,441,524	\$65,838,416	\$6,603,108	-1.4%
39	5/30/2009	\$55,359,239	\$49,545,080	\$5,814,159	-1.6%	\$16,040,196	\$15,175,370	\$864,826	0.2%	\$71,399,435	\$64,720,450	\$6,678,985	-1.1%
40	6/6/2009	\$60,250,125	\$53,702,986	\$6,547,139	-1.2%	\$16,301,599	\$15,982,166	\$319,434	0.2%	\$76,551,724	\$69,685,152	\$6,866,573	-0.9%

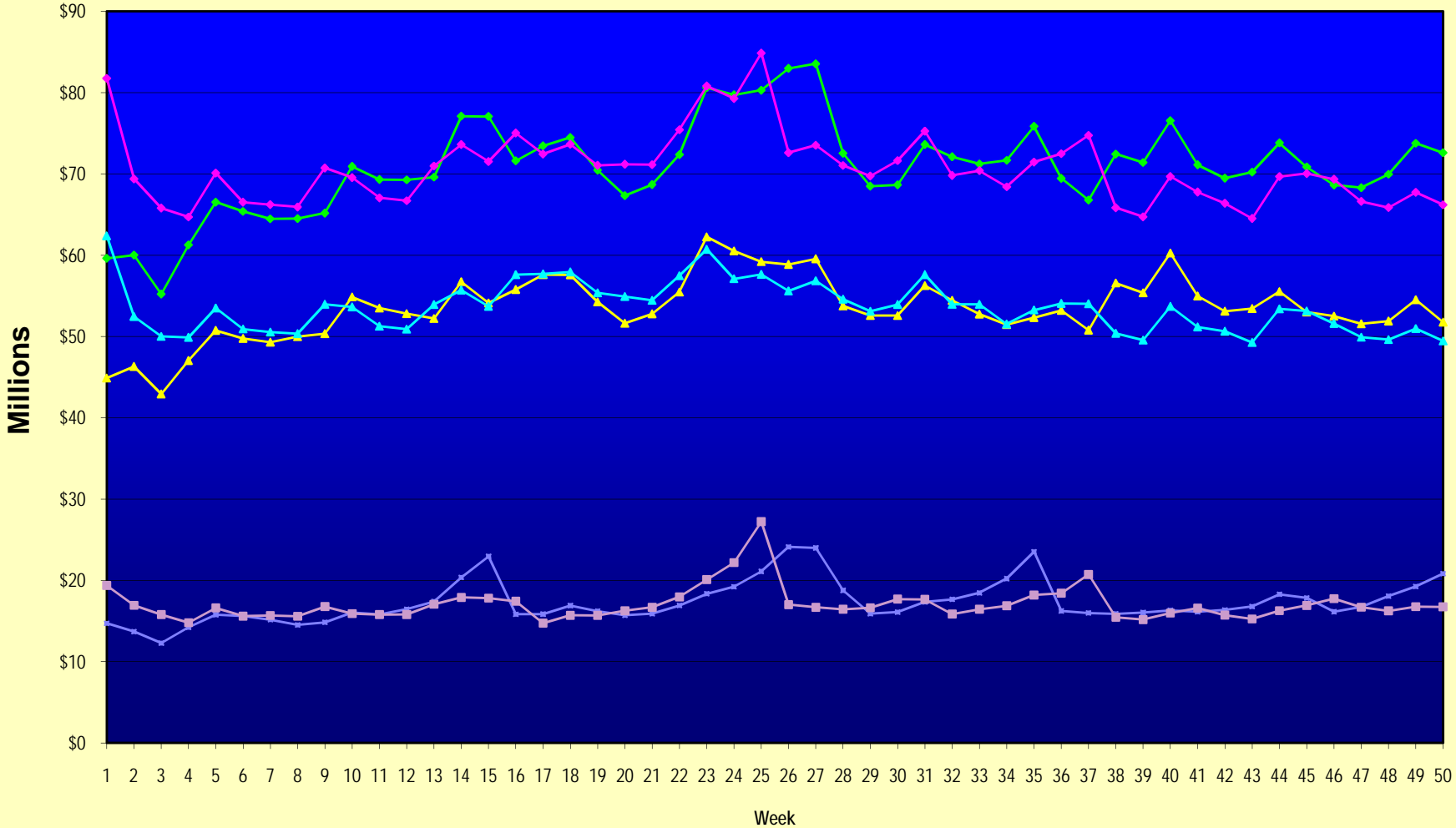
Note: Week 1 is not a full week of sales as this report is prepared on a Fiscal Year basis.

Texas Lottery Commission
Fiscal Year Over Year Change in Sales
Unaudited
FY 2009 Compared to FY 2008

Week	FY 2009 Week Ending	INSTANT TICKETS				ON-LINE GAMES				TOTAL SALES			
		FY 2009	FY 2008	Difference	% change - Cumulative Sales	FY 2009	FY 2008	Difference	% change - Cumulative Sales	FY 2009	FY 2008	Difference	% change - Cumulative Sales
41	6/13/2009	\$54,979,517	\$51,171,483	\$3,808,034	-1.0%	\$16,143,215	\$16,589,087	(\$445,872)	0.2%	\$71,122,732	\$67,760,570	\$3,362,162	-0.7%
42	6/20/2009	\$53,109,433	\$50,650,362	\$2,459,071	-0.9%	\$16,357,924	\$15,728,484	\$629,440	0.3%	\$69,467,357	\$66,378,846	\$3,088,511	-0.6%
43	6/27/2009	\$53,431,083	\$49,258,266	\$4,172,817	-0.7%	\$16,786,203	\$15,250,905	\$1,535,298	0.5%	\$70,217,286	\$64,509,171	\$5,708,115	-0.4%
44	7/4/2009	\$55,518,615	\$53,393,355	\$2,125,260	-0.6%	\$18,292,421	\$16,270,619	\$2,021,802	0.7%	\$73,811,036	\$69,663,974	\$4,147,062	-0.3%
45	7/11/2009	\$53,004,390	\$53,127,756	(\$123,366)	-0.6%	\$17,842,530	\$16,914,922	\$927,608	0.8%	\$70,846,920	\$70,042,678	\$804,242	-0.2%
46	7/18/2009	\$52,498,940	\$51,593,146	\$905,794	-0.5%	\$16,138,341	\$17,752,738	(\$1,614,397)	0.6%	\$68,637,281	\$69,345,884	(\$708,603)	-0.3%
47	7/25/2009	\$51,550,731	\$49,902,181	\$1,648,550	-0.5%	\$16,748,137	\$16,706,145	\$41,992	0.6%	\$68,298,868	\$66,608,326	\$1,690,542	-0.2%
48	8/1/2009	\$51,893,977	\$49,605,420	\$2,288,557	-0.4%	\$18,065,180	\$16,254,383	\$1,810,797	0.8%	\$69,959,157	\$65,859,803	\$4,099,354	-0.1%
49	8/8/2009	\$54,506,395	\$50,961,907	\$3,544,488	-0.2%	\$19,258,117	\$16,770,496	\$2,487,621	1.1%	\$73,764,512	\$67,732,403	\$6,032,109	0.1%
50	8/15/2009	\$51,766,530	\$49,452,511	\$2,314,019	-0.1%	\$20,828,293	\$16,749,487	\$4,078,807	1.5%	\$72,594,823	\$66,201,998	\$6,392,826	0.3%
51	8/22/2009		\$49,249,518				\$17,286,302				\$66,535,820		
52	8/29/2009		\$49,468,928				\$18,109,997				\$67,578,925		
53	9/5/2009		\$6,054,239				\$493,109				\$6,547,348		
Total thru Current Week		\$2,675,486,373	\$2,679,063,410	(\$3,577,037)	-0.1%	\$864,920,640	\$851,752,451	\$13,168,189	1.5%	\$3,540,407,013	\$3,530,815,861	\$9,591,152	0.3%
Fiscal Year Total		\$2,675,486,373	\$2,783,836,095			\$864,920,640	\$887,641,858			\$3,540,407,013	\$3,671,477,953		

** FY 2009 includes 6 days; FY 2008 includes 8 days
FY 2009 average daily sales are \$9,242,258. Two days at average daily sales are \$18,484,516.

Texas Lottery Commission Fiscal Year Over Year Change in Sales



◆ Total Sales 2009
 ◆ Total Sales 2008
 ▲ Instant Tickets 2009
 ▲ Instant Tickets 2008
 ■ On-Line Games 2009
 ■ On-Line Games 2008

Note: Week 1 is not a full week of sales as this report is prepared on a Fiscal Year basis.

Texas Lottery Commission
Instant Tickets by Price Point
Sales, Prize Expense, Sales Contribution and Payout Percentage With Year Over Year Changes
Unaudited

Fiscal Year	Price Point	# of Active Games	FY Sales	% of Instant Ticket Sales	Year over Year Change in Sales	FY Prize Expense	Year over Year Change in Prize Expense	FY Sales Contribution	Year over Year Change in Contribution	Average Prize Payout %	Year over Year Change in Payout %
2008	\$1.00	48	221,494,074	8.3%		134,201,263		\$87,292,811		60.6%	0.8%
thru	\$2.00	56	453,543,294	16.9%		296,186,615		\$157,356,679		65.3%	0.7%
8/16/2008	\$3.00	18	245,848,110	9.2%		161,578,017		\$84,270,093		65.7%	-0.1%
	\$5.00	51	740,378,911	27.6%		502,978,509		\$237,400,402		67.9%	-0.1%
	\$7.00	13	149,854,845	5.6%		101,909,768		\$47,945,077		68.0%	0.1%
	\$10.00	20	393,335,296	14.7%		275,149,661		\$118,185,635		70.0%	-0.8%
	\$20.00	10	215,488,180	8.0%		154,746,436		\$60,741,744		71.8%	-0.2%
	\$25.00	2	55,549,450	2.1%		40,332,868		\$15,216,582		72.6%	0.3%
	\$30.00	3	57,020,250	2.1%		41,279,011		\$15,741,239		72.4%	0.2%
	\$50.00	3	146,551,000	5.5%		105,755,689		\$40,795,311		72.2%	0.0%
Total		224	\$2,679,063,410			\$1,814,117,838		\$864,945,572		67.7%	0.3%
2009	\$1.00	47	228,468,650	8.5%		137,325,018		91,143,632		60.1%	0.0%
thru	\$2.00	43	434,043,444	16.2%		282,792,379		151,251,065		65.2%	-0.2%
8/15/2009	\$3.00	19	280,604,256	10.5%		184,053,505		96,550,751		65.6%	-0.2%
	\$5.00	50	810,926,932	30.3%		551,695,548		259,231,384		68.0%	0.1%
	\$7.00	9	131,733,686	4.9%		89,586,875		42,146,811		68.0%	0.0%
	\$10.00	21	369,610,350	13.8%		258,636,141		110,974,209		70.0%	0.0%
	\$20.00	9	294,294,200	11.0%		214,956,871		79,337,329		73.0%	1.8%
	\$25.00	1	2,372,325	0.1%		1,725,527		646,798		72.7%	0.2%
	\$30.00	3	10,023,630	0.4%		7,263,494		2,760,136		72.5%	0.1%
	\$50.00	4	113,408,900	4.2%		84,431,979		28,976,921		74.4%	3.2%
Total		206	\$2,675,486,373			\$1,812,467,336		\$863,019,037		67.7%	0.1%
Variance	\$1.00	-1	6,974,576		3.1%	3,123,754	2.3%	3,850,822	4.4%	-0.48%	
2009 to	\$2.00	-13	-19,499,850		-4.3%	-13,394,236	-4.5%	-6,105,614	-3.9%	-0.15%	
2008	\$3.00	1	34,756,146		14.1%	22,475,488	13.9%	12,280,658	14.6%	-0.13%	
	\$5.00	-1	70,548,021		9.5%	48,717,039	9.7%	21,830,982	9.2%	0.10%	
	\$7.00	-4	-18,121,159		-12.1%	-12,322,893	-12.1%	-5,798,266	-12.1%	0.00%	
	\$10.00	1	-23,724,946		-6.0%	-16,513,520	-6.0%	-7,211,426	-6.1%	0.02%	
	\$20.00	-1	78,806,020		36.6%	60,210,434	38.9%	18,595,586	30.6%	1.23%	
	\$25.00	-1	-53,177,125		-95.7%	-38,607,341	-95.7%	-14,569,784	-95.7%	0.13%	
	\$30.00	0	-46,996,620		-82.4%	-34,015,517	-82.4%	-12,981,103	-82.5%	0.07%	
	\$50.00	1	-33,142,100		-22.6%	-21,323,710	-20.2%	-11,818,390	-29.0%	2.29%	
Total		-18	-\$3,577,037		-0.1%	-\$1,650,501	-0.1%	-\$1,926,536	-0.2%	0.03%	

Texas Lottery Commission
Instant Tickets by Price Point
Sales, Prize Expense, Sales Contribution and Payout Percentage With Year Over Year Changes
 Unaudited

Notes - Instant Ticket Variances

		FY 2009		FY 2008		Difference
Sales	\$1 - \$7		\$1,885,776,968		\$1,811,119,234	\$74,657,734
Prize Exp.	\$1 - \$7		\$1,245,453,325		\$1,196,854,172	\$48,599,152
Sales Cont.	\$1 - \$7		\$640,323,643		\$614,265,062	\$26,058,582
Prize Exp. %	\$1 - \$7		66.0%		66.1%	0.0%
		FY 2009		FY 2008		Difference
Sales	\$10 - \$50		\$789,709,405		\$867,944,176	-\$78,234,771
Prize Exp.	\$10 - \$50		\$567,014,012		\$617,263,665	-\$50,249,654
Sales Cont.	\$10 - \$50		\$222,695,393		\$250,680,511	-\$27,985,117
Prize Exp. %	\$10 - \$50		71.8%		71.1%	0.7%
		FY 2009		FY 2008		Difference
Sales	Instant		\$2,675,486,373		\$2,679,063,410	-\$3,577,037
Prize Exp.	Instant		\$1,812,467,336		\$1,814,117,838	-\$1,650,501
Sales Cont.	Instant		\$863,019,037		\$864,945,572	-\$1,926,536
Prize Exp. %	Instant		67.7%		67.7%	0.0%

		FY 2009		FY 2008		Difference
Sales	\$1 - \$10		\$2,255,387,318		\$2,204,454,530	\$50,932,788
Prize Exp.	\$1 - \$10		\$1,504,089,466		\$1,472,003,833	\$32,085,632
Sales Cont.	\$1 - \$10		\$751,297,852		\$732,450,697	\$18,847,156
Prize Exp. %	\$1 - \$10		66.7%		66.8%	-0.1%
		FY 2009		FY 2008		Difference
Sales	\$20 - \$50		\$420,099,055		\$474,608,880	-\$54,509,825
Prize Exp.	\$20 - \$50		\$308,377,871		\$342,114,004	-\$33,736,134
Sales Cont.	\$20 - \$50		\$111,721,184		\$132,494,876	-\$20,773,691
Prize Exp. %	\$20 - \$50		73.4%		72.1%	1.3%
		FY 2009		FY 2008		Difference
Sales	Instant		\$2,675,486,373		\$2,679,063,410	-\$3,577,037
Prize Exp.	Instant		\$1,812,467,336		\$1,814,117,838	-\$1,650,501
Sales Cont.	Instant		\$863,019,037		\$864,945,572	-\$1,926,536
Prize Exp. %	Instant		67.7%		67.7%	0.0%

Texas Lottery Commission
Weekly Sales Summary
& Comparison to Previous Week
 Unaudited

	Week Ending 08/15/2009		Week Ending 08/08/2009			
	<u>THIS WEEK</u>	% of Sales	<u>LAST WEEK</u>	% of Sales	<u>\$ change</u>	<u>% change</u>
Total Sales	<u>\$72,594,823</u>		<u>\$73,764,512</u>		<u>-\$1,169,689</u>	-1.59%
Instant Tickets	<u>\$51,766,530</u>	71.3%	<u>\$54,506,395</u>	73.9%	<u>-\$2,739,865</u>	-5.03%
Lotto Texas	\$5,039,003	6.9%	\$4,871,972	6.6%	\$167,031	3.43%
Pick 3	\$5,060,284	7.0%	\$5,499,613	7.5%	-\$439,330	-7.99%
Pick 3 Sum It Up	\$98,227	0.1%	\$106,250	0.1%	-\$8,024	-7.55%
Cash 5	\$1,276,469	1.8%	\$1,315,589	1.8%	-\$39,120	-2.97%
Texas Two Step	\$919,391	1.3%	\$807,755	1.1%	\$111,636	13.82%
Mega Millions	\$6,209,519	8.6%	\$4,582,536	6.2%	\$1,626,983	35.50%
Megaplier	\$1,223,524	1.7%	\$1,016,543	1.4%	\$206,981	20.36%
Daily 4	\$907,349	1.2%	\$958,392	1.3%	-\$51,043	-5.33%
Daily 4 Sum It Up	\$94,529	0.1%	\$99,468	0.1%	-\$4,939	-4.97%
Total Online Sales	<u>\$20,828,293</u>		<u>\$19,258,117</u>		<u>\$1,570,176</u>	8.15%

* Totals may not sum due to rounding.

Texas Lottery Commission
Weekly Sales Summary
Unaudited

INSTANT TICKETS
TOP TEN SELLING GAMES

For the Week Ending : 08/15/2009

Rank	Price Point	Game	Sales (Millions)
1	\$ 20	\$500,000,000 BLOCKBUSTER	\$ 8.320
2	\$ 5	TAKE 5	\$ 2.871
3	\$ 10	WILD 10'S	\$ 2.481
4	\$ 3	BONUS CASHWORD	\$ 2.031
5	\$ 5	PURE GOLD	\$ 1.959
6	\$ 7	BEST OF 7'S	\$ 1.954
7	\$ 50	\$140,000,000 EXTREME PAYOUT	\$ 1.749
8	\$ 3	DOLLAR SIGNS	\$ 1.679
9	\$ 10	SUMMER SPECTACULAR	\$ 1.571
10	\$ 10	SET FOR LIFE	\$ 1.558

Texas Lottery Commission
Prize Payout Tracking Report
Unaudited

Through Week Ending 08/15/2009

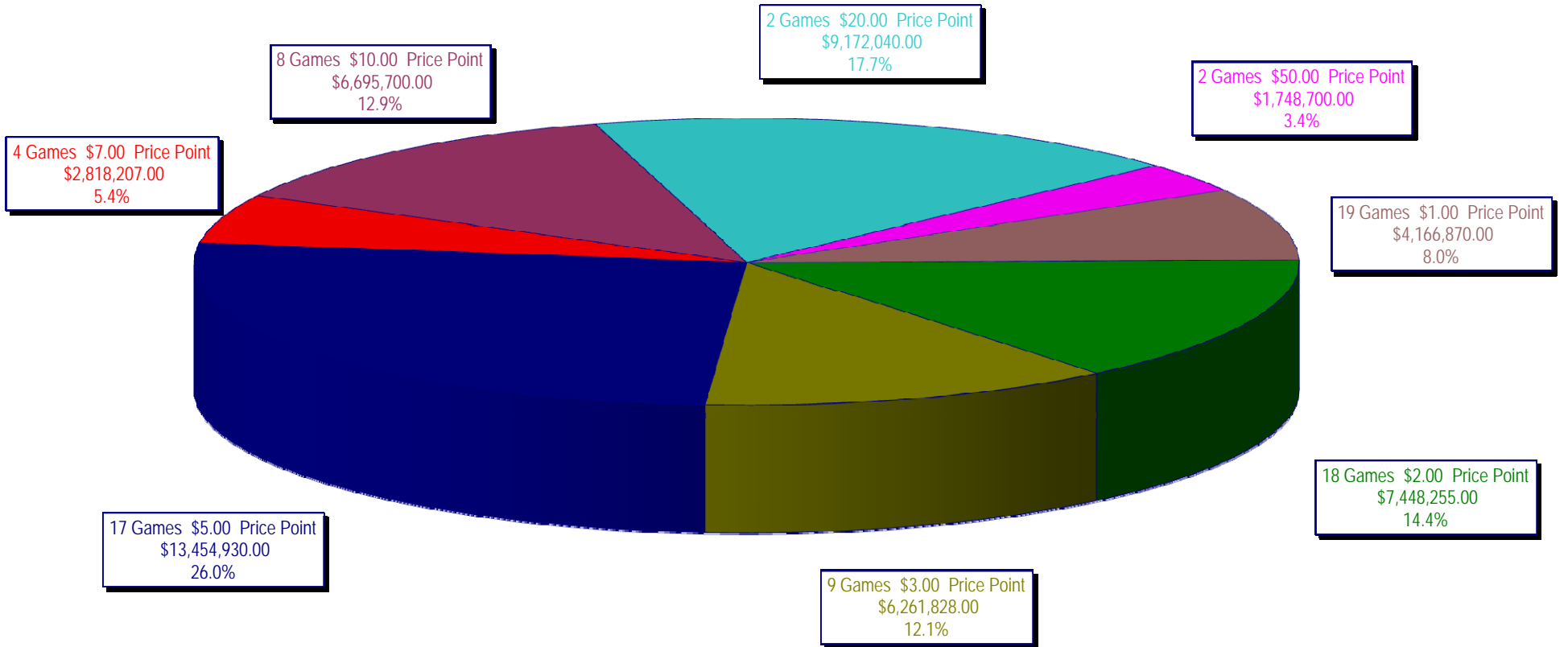
On-Line Sales

		FY Sales Through Week Ending 8/15/2009		FY Prize Expense Through Week Ending 8/15/2009	Actual* Prize Payout	Base Payout (Prize Pool)
Lotto	\$	188,571,005	\$	94,876,594	50.31%	50.00%
Pick 3		274,047,746		132,569,410	48.37%	50.00%
Pick 3 Sum It Up		5,699,856		2,549,016	44.72%	50.00%
Cash 5		67,918,703		34,064,723	50.16%	50.00%
Texas Two-Step		48,120,962		25,206,327	52.38%	50.00%
Mega Millions		187,637,537		93,632,866	49.90%	50.00%**
Megaplier		42,826,738		21,023,399	49.09%	N/A
Daily 4		44,881,134		22,237,200	49.55%	50.00%
Daily 4-Sum It Up		5,216,960		2,243,235	43.00%	50.00%
Totals	\$	864,920,640	\$	428,402,771	49.53%	

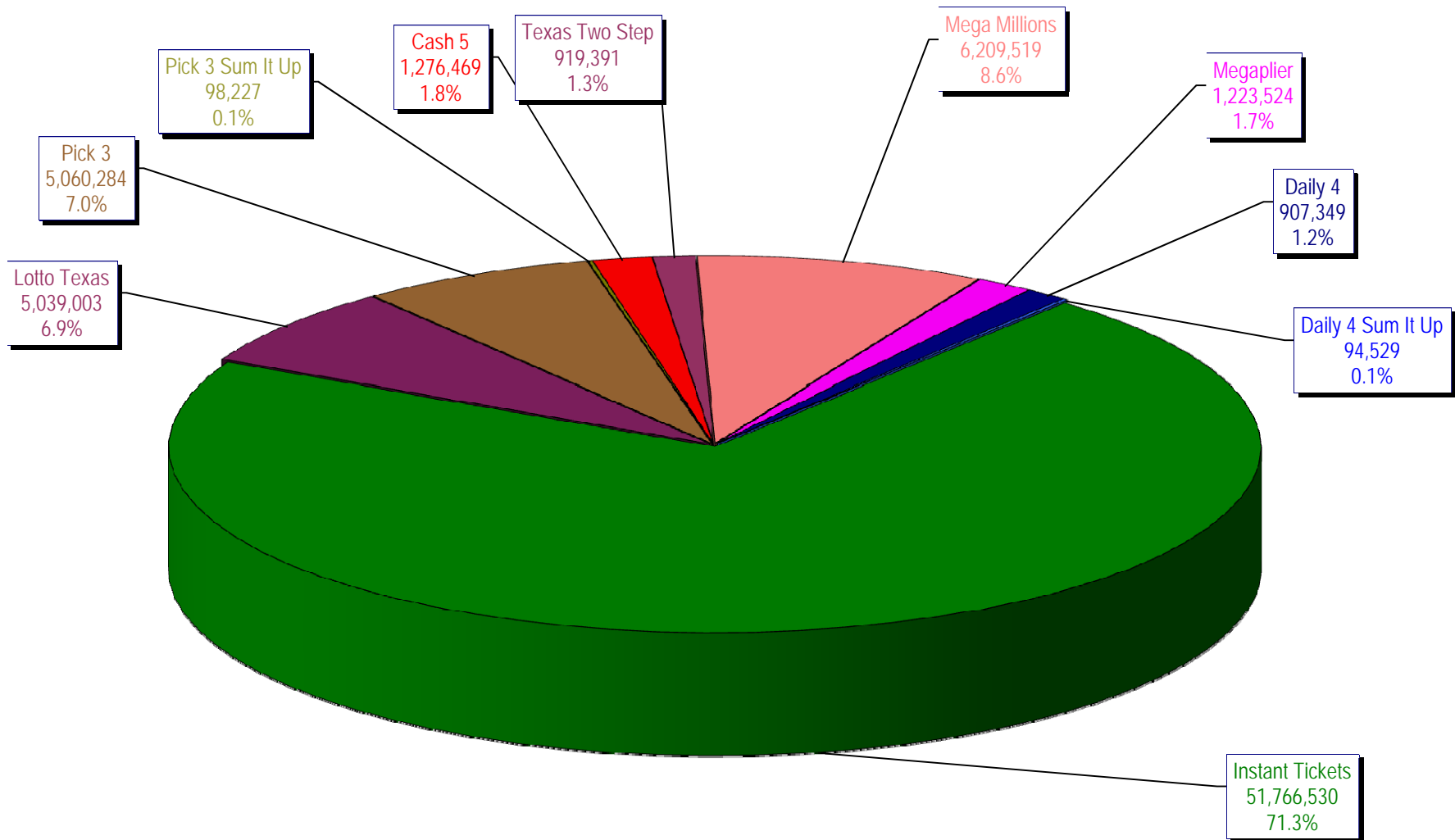
* Before Unclaimed Prizes

** Estimated; depends on # of guaranteed prizes won in Texas

Texas Lottery Commission
Instant Ticket Sales
For the Week Ending 08/15/2009
(Unaudited)



Texas Lottery Commission
All Game Sales
For the Week Ending 08/15/2009
(Unaudited)



Texas Lottery Commission - Weekly Sales Summary for FY 2009 (Unaudited)

Week Ended	Instant Games	New Games & Dates	Lotto Texas	Jackpot		Pick 3	Pick 3 Sum It Up	Cash 5	Texas Two Step	Jackpot		Mega Millions	Jackpot		Megaplier	Daily 4	Daily 4 Sum It Up	Total	Per Cap.
				W	S					M/T	TH/F		T	F					
9/6/2008	50,944,343.00	1108 (\$2,N), 1088 (\$3, N) - 9/01/08	3,378,718.00	5	6	5,436,414.00	122,123.00	1,396,622.00	890,346.00	350	450	2,445,490.00	12	16	649,090.00	786,482.50	109,834.00	66,159,462.50	2.77
9/13/2008	46,309,551.00	1109 (\$1,N), 1098 (\$5, N) - 9/08/08	3,020,089.00	7	8	4,705,585.50	105,899.00	1,279,412.00	856,199.00	600	200	2,327,214.00	24	12	617,672.00	696,633.00	96,156.50	60,014,411.00	2.51
9/20/2008	42,923,171.00	0	3,054,093.00	9	10	4,121,734.50	90,718.00	1,155,350.00	637,792.00	225	250	1,978,127.00	15	12	540,225.00	627,210.00	86,013.50	55,214,434.00	2.31
9/27/2008	47,042,801.00	1111 (\$2,N), 1099 (\$5, N) - 9/22/08	3,427,671.00	11	12	4,821,563.00	103,189.50	1,288,062.00	834,307.00	275	425	2,322,862.00	16	24	617,085.00	709,741.50	97,858.00	61,265,140.00	2.56
10/4/2008	50,747,162.00	1113 (\$1,N) 9/29/08	3,675,683.00	13	14	5,305,711.00	116,332.50	1,369,040.00	1,074,874.00	525	650	2,671,927.00	32	42	693,845.00	770,782.50	106,277.00	66,531,634.00	2.78
10/11/2008	49,763,789.00	0	3,732,365.00	15	16	5,287,094.00	114,665.50	1,370,334.00	1,305,250.00	800	975	2,306,070.00	12	16	622,120.00	778,204.00	106,395.00	65,386,286.50	2.74
10/18/2008	49,299,053.00	1117 (\$3,N), 1118 (\$20,N) - 10/13/08	3,780,438.00	17	18	5,149,258.00	109,530.00	1,355,601.00	741,849.00	200	200	2,500,644.00	23	32	652,198.00	776,366.00	102,056.00	64,466,993.00	2.70
10/25/2008	49,977,581.00	1119 (\$1,N), 1120 (\$5,N) - 10/20/08	3,210,762.00	4	5	5,099,671.00	107,104.50	1,339,079.00	789,649.00	225	275	2,456,965.00	42	12	641,206.00	778,434.00	102,972.50	64,503,424.00	2.70
11/1/2008	50,346,542.00	1121 (\$2,N), 1122 (\$10,N) - 10/27/08	3,325,641.00	6	7	5,234,124.00	109,983.00	1,339,046.00	946,035.00	375	475	2,347,596.00	16	23	626,235.00	805,572.00	104,612.50	65,185,386.50	2.73
11/8/2008	54,860,087.00	1123 (\$3,N), 1124 (\$7,N) - 11/03/08; 1103 (\$3,N) - 11/05/08; 1063 (\$3,N) - 11/07/08	3,290,417.00	4	5	5,686,701.00	118,495.00	1,397,985.00	1,158,101.00	625	750	2,729,302.50	31	42	692,662.00	871,230.00	112,175.50	70,917,156.00	2.97
11/15/2008	53,484,812.00	1125 (\$1, N), 1126 (\$5,N) - 11/10/08	3,336,934.00	6	7	5,459,984.00	112,884.00	1,366,024.00	766,955.00	200	225	3,102,251.00	51	62	749,736.00	830,957.00	104,094.00	69,314,631.00	2.90
11/22/2008	52,806,511.00	0	3,452,481.00	8	9	5,329,591.00	108,861.50	1,358,271.00	743,950.00	200	200	3,666,517.00	73	86	847,201.00	849,077.50	104,797.50	69,267,258.50	2.90
11/29/2008	52,199,741.00	1127 (\$2,N), 1128 (\$5,N) - 11/24/08	3,585,374.00	10	11	5,340,783.50	111,443.00	1,315,233.00	686,077.00	200	225	4,441,715.00	96	111	968,906.00	845,475.50	102,569.00	69,597,317.00	2.91
12/6/2008	56,731,851.00	0	3,794,991.00	12	13	5,752,593.00	121,663.50	1,416,446.00	780,328.00	250	200	6,238,355.00	128	146	1,270,214.00	881,841.50	107,357.00	77,095,640.00	3.23
12/13/2008	54,109,617.00	1129 (\$1, N) - 12/08/08	3,315,658.00	4	5	5,580,770.00	114,295.50	1,384,858.00	766,893.00	225	250	9,150,536.00	170	207	1,691,121.00	846,176.50	101,919.50	77,061,844.50	3.22
12/20/2008	55,777,328.00	1104 (\$2,N), 1105 (\$5,N), 1106 (\$10,N) - 12/15/08	3,432,340.00	6	7	5,741,120.00	116,075.50	1,401,805.00	741,945.00	200	200	2,736,234.00	12	16	687,875.00	871,579.50	104,543.00	71,610,845.00	3.00
12/27/2008	57,597,885.00	1077 (\$1,N), 1110 (\$1,N) - 12/22/08	3,582,169.00	8	4	5,628,081.50	115,323.00	1,340,590.00	708,906.00	225	250	2,842,167.00	22	29	706,042.00	828,346.00	100,146.00	73,449,655.50	3.07
1/3/2009	57,582,115.00	0	3,784,763.00	5	6	5,690,220.50	120,519.50	1,406,807.00	934,000.00	325	525	3,190,457.00	37	46	780,850.00	885,674.00	106,736.50	74,482,142.50	3.12
1/10/2009	54,250,945.00	1135 (\$2,N), 1136 (\$5,N) - 1/5/09	3,582,400.00	7	8	5,476,890.00	116,674.50	1,403,531.00	1,267,847.00	675	900	2,701,275.00	12	16	681,574.00	868,919.00	104,109.50	70,454,165.00	2.95
1/17/2009	51,625,339.00	1137 (\$1,N), 1138 (\$3,N) - 1/12/09	3,668,302.50	9	10	5,443,159.00	112,605.00	1,387,958.00	778,563.00	200	200	2,683,707.00	22	12	675,416.00	852,987.00	98,907.50	67,326,944.00	2.82
1/24/2009	52,789,573.00	1115 (\$2,N), 1116 (\$5,N) - 1/19/09	3,723,835.50	11	12	5,514,547.50	115,827.50	1,376,695.00	860,483.00	225	325	2,692,611.00	16	21	676,936.00	836,996.00	99,541.00	68,687,045.50	2.87
1/31/2009	55,453,471.00	1080 (\$1,N), 1024 (\$20,R) - 1/26/09; 1062 (\$5,N) - 1/28/09	3,837,299.00	13	14	5,700,714.50	121,794.50	1,403,756.00	1,070,879.00	450	600	3,002,883.00	30	40	731,253.00	925,937.50	113,755.50	72,361,743.00	3.03
2/7/2009	62,247,711.00	1035 (\$2,N), 1144 (\$5,N), 1058 (\$10, N) - 2/2/09	4,092,117.00	15	16	6,336,717.00	134,543.00	1,481,812.00	842,746.00	200	225	3,509,032.00	50	60	829,550.00	1,007,529.00	120,267.50	80,602,024.50	3.37
2/14/2009	60,509,056.00	1146 (\$7,N), 1089 (\$1,N) - 2/9/09	4,119,193.00	17	18	6,363,028.00	133,901.50	1,445,616.00	1,013,987.00	325	450	4,082,572.00	73	85	928,813.00	1,010,898.50	120,068.50	79,727,133.50	3.34
2/21/2009	59,194,623.00	1046 (\$2,N), 1140 (\$5,N) - 2/16/09	4,326,401.00	19	20	6,038,807.50	128,493.00	1,439,312.00	1,268,803.00	600	750	5,614,471.00	103	120	1,178,133.00	988,075.00	115,703.50	80,292,822.00	3.36
2/28/2009	58,857,216.00	1132 (\$10,N), 1149 (\$1,N) - 2/23/09	4,526,304.00	21	22	6,084,457.50	128,979.50	1,439,607.00	1,668,414.00	925	1,150	7,676,975.00	145	171	1,504,895.00	973,121.00	114,171.00	82,974,140.00	3.47

Texas Lottery Commission - Weekly Sales Summary for FY 2009 (Unaudited)

Week Ended	Instant Games	New Games & Dates	Lotto Texas	Jackpot		Pick 3	Pick 3 Sum It Up	Cash 5	Texas Two Step	Jackpot		Mega Millions	Jackpot		Megaplier	Daily 4	Daily 4 Sum It Up	Total	Per Cap.
				W	S					M/T	TH/F		T	F					
3/7/2009	59,552,257.00	0	4,928,440.00	23	25	6,133,789.00	128,599.00	1,487,185.00	1,984,358.00	1,350	1,600	6,898,457.00	212	12	1,349,427.00	971,644.50	113,236.00	83,547,392.50	3.50
3/14/2009	53,754,084.00	1139 (\$2.N), 1079 (\$5.N) - 3/09/09	4,752,592.00	26	28	5,850,166.00	120,684.50	1,418,127.00	2,112,571.00	1,900	2,150	2,782,204.00	16	26	698,214.00	925,615.00	109,657.50	72,523,915.00	3.03
3/21/2009	52,581,107.00	1107 (\$1.N), 1154 (\$3.N), 1057 (\$10.N) - 3/16/09; 1102 (\$2.N) - 3/19/09	3,437,818.00	4	5	5,776,041.50	117,294.00	1,399,720.00	880,620.00	200	225	2,595,785.00	12	16	653,517.00	934,185.00	108,057.50	68,484,145.00	2.87
3/28/2009	52,560,961.00	1130 (\$5.N), 1150 (\$10.N) - 3/23/09	3,486,731.00	6	7	5,633,454.50	114,269.50	1,381,550.00	901,673.00	300	200	2,845,499.00	24	34	701,971.00	925,093.50	104,691.50	68,655,894.00	2.87
4/4/2009	56,249,759.00	1151 (\$2.N), 1101 (\$50.N) - 3/30/09	3,746,083.00	8	9	5,893,043.50	122,332.00	1,429,598.00	940,614.00	225	300	3,321,274.00	43	54	794,282.00	998,042.00	111,733.50	73,606,761.00	3.08
4/11/2009	54,440,987.00	1153 (\$2.N) - 4/07/09; 1152 (\$3.N) - 4/08/09	3,594,176.00	10	4	5,893,551.00	120,491.50	1,394,879.00	933,807.00	425	200	3,772,700.00	65	78	857,890.00	987,127.50	105,977.50	72,101,586.50	3.02
4/18/2009	52,755,834.00	1145 (\$1.N), 1148 (\$5.N) - 4/13/09	3,462,217.00	5	6	5,627,572.00	117,123.50	1,374,682.00	829,493.00	225	200	4,960,982.00	92	109	1,040,136.00	957,161.00	100,218.50	71,225,419.00	2.98
4/25/2009	51,450,968.00	1051 (\$7.N) - 4/20/09	3,517,624.00	7	8	5,408,672.50	117,314.50	1,347,754.00	876,206.00	225	300	6,614,120.95	130	155	1,298,021.00	937,777.00	99,408.50	71,667,866.45	3.00
5/2/2009	52,327,090.00	1161 (\$1.N), 1081 (\$5.N) - 4/27/09	3,679,438.00	9	10	5,512,770.50	113,755.50	1,362,174.00	880,888.00	425	200	9,277,686.00	181	225	1,653,107.00	937,874.00	102,880.00	75,847,663.00	3.17
5/9/2009	53,214,412.00	0	3,554,635.00	11	4	5,603,106.00	118,185.50	1,389,454.00	823,436.00	225	200	2,961,748.00	12	17	718,169.00	967,592.00	104,881.00	69,455,618.50	2.91
5/16/2009	50,785,227.00	1131 (\$2.N), 1134 (\$5.N) - 5/11/09 1165 (\$1.N), 1114 (\$20.N) - 5/18/09; 1156 (\$1.N) - 5/19/09; 1153 (\$2.N) - 5/20/09	3,332,475.00	5	6	5,417,197.00	112,501.00	1,356,843.00	842,436.00	225	275	3,116,696.00	28	38	748,141.00	959,922.50	104,332.00	66,775,770.50	2.79
5/23/2009	56,567,077.00	1049 (\$3.N) - 5/25/09	3,425,065.00	7	8	5,363,150.50	111,143.50	1,356,979.00	1,061,946.00	400	525	2,790,741.00	12	16	694,815.00	967,375.50	103,231.00	72,441,523.50	3.03
5/30/2009	55,359,239.00	1112 (\$5.N) - 6/1/09	3,480,479.00	9	10	5,329,739.50	108,222.50	1,314,598.00	1,173,008.00	650	800	2,871,590.00	25	35	705,366.00	957,423.50	99,769.00	71,399,434.50	2.99
6/6/2009	60,250,125.00	1173 (\$1.N), 1090 (\$10.N) - 06/29/09	3,656,108.00	11	12	5,806,294.00	117,692.00	1,379,840.00	833,645.00	200	225	2,696,889.00	12	17	684,660.00	1,020,540.50	105,930.50	76,551,724.00	3.20
6/13/2009	54,979,517.00	1155 (\$3.N), 1158 (\$5.N) - 07/06/09	3,639,064.00	13	14	5,434,316.00	109,481.50	1,323,811.00	960,321.00	300	400	2,892,403.00	25	36	712,936.00	967,447.50	103,434.50	71,122,731.50	2.98
6/20/2009	53,109,433.00	1177 (\$1.N), 1083 (\$7.N) - 07/20/09	3,722,083.00	15	16	5,298,164.50	106,370.50	1,295,187.00	914,417.00	525	200	3,203,712.00	46	57	763,056.00	955,438.50	99,495.00	69,467,356.50	2.91
6/27/2009	53,431,083.00	1171 (\$2.N), 1260 (\$10.N) - 07/13/09	3,826,811.00	17	18	5,294,301.50	105,363.00	1,280,460.00	779,414.00	225	200	3,619,796.00	68	81	829,739.00	951,028.50	99,289.50	70,217,285.50	2.94
7/4/2009	55,518,615.00	1177 (\$1.N), 1083 (\$7.N) - 07/20/09	3,978,976.00	19	20	5,365,381.00	109,234.50	1,301,272.00	834,396.00	225	275	4,619,366.00	94	113	987,368.00	990,473.50	105,953.50	73,811,035.50	3.09
7/11/2009	53,004,390.00	1167 (\$3.N), 1178 (\$5.N) - 07/27/09	4,220,775.00	21	22	5,261,293.50	108,423.50	1,309,778.00	997,751.00	375	500	3,994,574.00	133	12	883,721.00	964,339.00	101,874.50	70,846,919.50	2.96
7/18/2009	52,498,940.00	1179 (\$2.N) - 08/03/09	4,285,057.00	23	25	5,041,176.00	104,049.00	1,284,914.00	785,813.00	200	225	2,831,976.00	16	27	760,753.00	944,560.50	100,042.00	68,637,280.50	2.87
7/25/2009	51,550,731.00	1157 (\$1.N), 1083 (\$7.N) - 07/20/09	4,330,422.00	26	27	5,093,324.00	102,837.50	1,265,233.00	893,643.00	275	375	3,157,506.00	37	48	841,070.00	964,018.00	100,083.50	68,298,868.00	2.86
8/1/2009	51,893,977.00	1179 (\$2.N) - 08/03/09	4,656,337.00	30	31	5,243,296.50	101,341.00	1,269,573.00	1,072,219.00	500	625	3,702,912.00	60	73	972,993.00	947,498.00	99,010.00	69,959,156.50	2.93
8/8/2009	54,506,395.00	1157 (\$1.N) - 08/10/09	4,871,972.00	32	34	5,499,613.00	106,250.00	1,315,589.00	807,755.00	200	225	4,582,536.00	84	102	1,016,543.00	958,391.50	99,467.50	73,764,512.00	3.03
8/15/2009	51,766,530.00		5,039,003.00	36	37	5,060,283.50	98,226.50	1,276,469.00	919,391.00	275	400	6,209,519.00	124	146	1,223,524.00	907,348.50	94,528.50	72,594,823.00	2.98
weekly change	-5.03%		3.43%			-7.99%	-7.55%	-2.97%	13.82%			35.50%			20.36%	-5.33%	-4.97%	-1.59%	
	SALES		SALES			SALES	SALES	SALES	SALES			SALES			SALES	SALES	SALES	SALES	% of Sales
Startup to date	36,156,072,375.00		10,467,668,052.00			3,572,766,698.00	12,185,685.50	2,187,074,713.00	474,386,680.00			1,113,776,132.45			261,034,772.00	87,098,105.50	13,555,763.00	54,553,752,948.45	100.0%
Calendar Year to date	1,774,168,700.00		128,298,760.00			181,607,199.00	175,670.50	44,336,259.00	33,227,543.00			129,819,228.95			29,166,957.00	30,890,447.00	3,414,955.50	2,355,105,719.95	100.0%
Fiscal Year to date 2009	2,675,486,373.00		188,571,005.00			274,047,745.50	5,699,855.50	67,918,703.00	48,120,962.00			187,637,537.45			42,826,738.00	44,881,134.00	5,216,959.50	3,540,407,012.95	100.0%