



*WEEKLY SALES SUMMARY*

Unaudited

**Week Ending: 10/17/2009**

Texas Lottery Commission  
Fiscal Year to Date Sales Comparison  
Unaudited

Through the week ending 10/17/2009 (7 weeks)

Sales by Game	FY 2008 *	FY 2009 **	FY 2010	\$ Change		% Change	
				FY 2010 to FY 2008	FY 2010 to FY 2009 to	FY 2010 to FY 2008	FY 2010 to FY 2009
Instants	\$ 369,665,340	\$ 330,975,631	\$ 346,319,950	\$ -23,345,390	\$ 15,344,319	-6.3%	4.6%
Lotto Texas	29,967,320	23,959,242	46,771,796	16,804,476	22,812,554	56.1%	95.2%
Pick 3	39,753,869	34,706,088	34,766,143	-4,987,726	60,055	-12.5%	0.2%
Pick 3 Sum It Up	-	759,204	698,546	698,546	-60,658	-	-8.0%
Cash 5	11,005,886	9,158,603	8,793,120	-2,212,766	-365,483	-20.1%	-4.0%
Texas Two Step	6,405,281	6,286,580	5,671,106	-734,175	-615,474	-11.5%	-9.8%
Mega Millions	17,728,333	16,451,244	27,955,564	10,227,231	11,504,320	57.7%	69.9%
Megaplier	4,665,838	4,368,701	6,136,158	1,470,320	1,767,457	31.5%	40.5%
Daily 4	4,048,918	5,124,391	6,488,776	2,439,858	1,364,386	-	26.6%
Daily 4 Sum It Up	1,218,244	701,330	643,084	-575,160	-58,247	-	-8.3%
<b>Total</b>	<b>\$ 484,459,029</b>	<b>\$ 432,491,013</b>	<b>\$ 484,244,242</b>	<b>\$ -214,787</b>	<b>\$ 51,753,229</b>	<b>0.0%</b>	<b>12.0%</b>

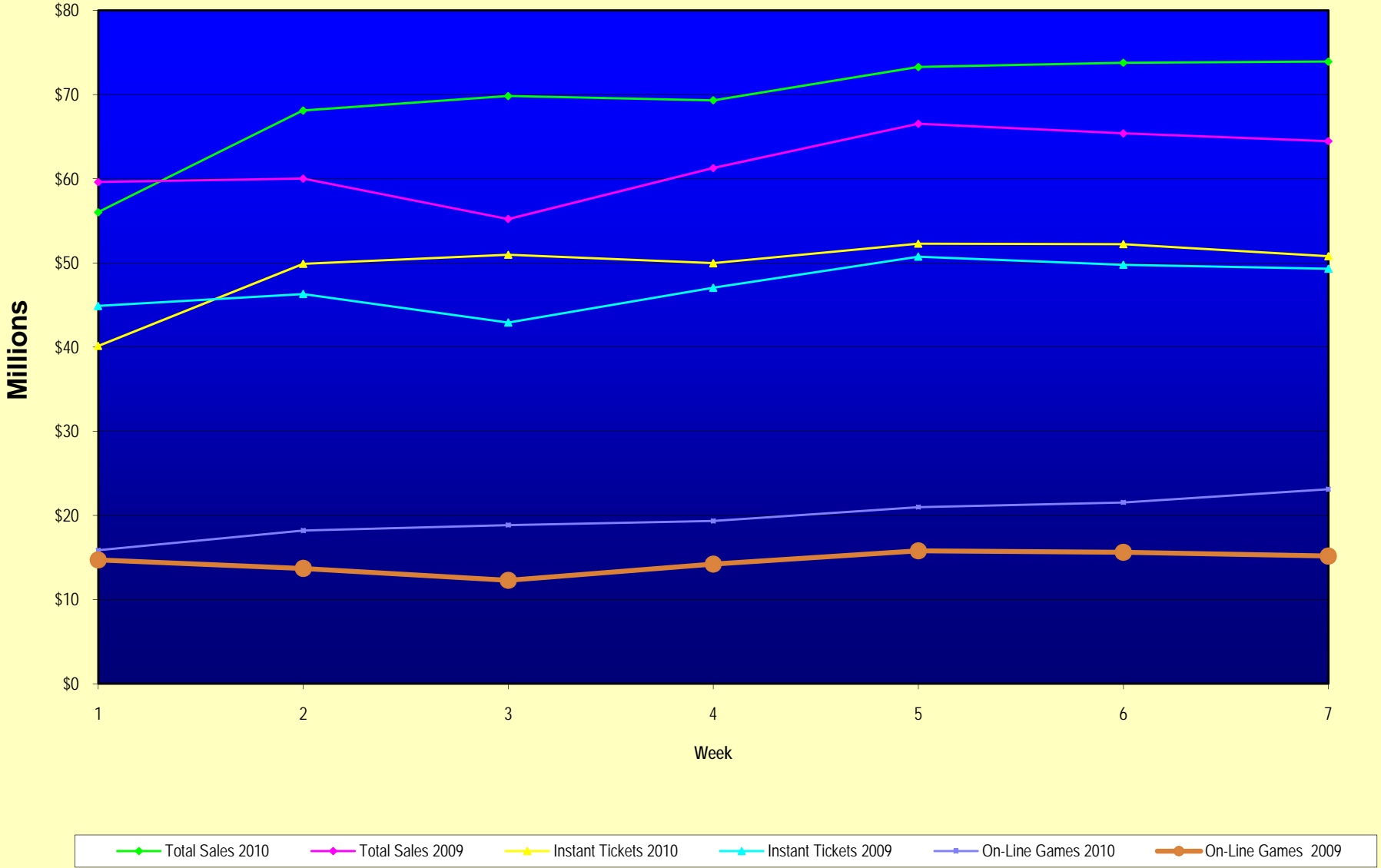
\* 3 extra days      \*\* 1 extra day

Texas Lottery Commission  
 Fiscal Year to Date Cumulative Average Sales Comparison  
 Unaudited

Through the week ending 10/17/2009 (7 weeks)

Sales by Game	FY 2008	FY 2009	FY 2010
Instant	\$ 7,393,307	\$ 6,895,326	\$ 7,368,510
Lotto Texas	599,346	499,151	995,145
Pick 3	795,077	723,044	739,705
Pick 3 Sum It Up	-	15,817	14,863
Cash 5	220,118	190,804	187,088
Texas Two Step	128,106	130,970	120,662
Mega Millions	354,567	342,734	594,799
Megaplier	93,317	91,015	130,557
Daily 4	80,978	106,758	138,059
Daily 4 Sum It Up	24,365	14,611	13,683
<b>Total</b>	<b>\$ <u>9,689,181</u></b>	<b>\$ <u>9,010,229</u></b>	<b>\$ <u>10,303,069</u></b>
	thru 10/20/2007 50 days	thru 10/18/2008 48 days	thru 10/17/2009 47 days

Texas Lottery Commission  
Fiscal Year Over Year Change in Sales



Note: Week 1 is not a full week of sales as this report is prepared on a Fiscal Year basis.

Texas Lottery Commission  
Instant Tickets by Price Point  
Sales, Prize Expense, Sales Contribution and Payout Percentage With Year Over Year Changes  
Unaudited

Fiscal Year	Price Point	# of Active Games	FY Sales	% of Instant Ticket Sales	Year over Year Change in Sales	FY Prize Expense	Year over Year Change in Prize Expense	FY Sales Contribution	Year over Year Change in Contribution	Average Prize Payout %	Year over Year Change in Payout %
2009	\$1.00	19	27,530,063	8.3%		16,616,624		10,913,439		60.4%	0.4%
thru	\$2.00	19	60,253,956	18.2%		39,068,581		21,185,375		64.8%	-0.7%
10/18/2008	\$3.00	10	36,757,341	11.1%		24,138,550		12,618,791		65.7%	-0.1%
	\$5.00	23	100,185,394	30.3%		68,147,481		32,037,913		68.0%	0.1%
	\$7.00	5	10,637,802	3.2%		7,238,165		3,399,637		68.0%	0.1%
	\$10.00	11	42,251,140	12.8%		29,571,916		12,679,224		70.0%	0.0%
	\$20.00	6	32,155,820	9.7%		23,077,264		9,078,556		71.8%	0.0%
	\$25.00	1	1,973,425	0.6%		1,435,135		538,290		72.7%	0.2%
	\$30.00	2	3,344,640	1.0%		2,424,770		919,870		72.5%	0.1%
	\$50.00	3	15,886,050	4.8%		11,486,715		4,399,335		72.3%	0.2%
<b>Total</b>		<b>99</b>	<b>\$330,975,631</b>			<b>\$223,205,201</b>		<b>\$107,770,430</b>		<b>67.4%</b>	<b>-0.3%</b>
2010	\$1.00	24	29,510,065	8.5%		17,759,638		11,750,427		60.2%	0.1%
thru	\$2.00	27	50,153,774	14.5%		34,002,937		16,150,837		67.8%	4.1%
10/17/2009	\$3.00	13	43,192,029	12.5%		28,376,619		14,815,410		65.7%	0.2%
	\$5.00	26	96,098,798	27.7%		65,225,468		30,873,330		67.9%	-0.2%
	\$7.00	4	12,973,044	3.7%		8,820,873		4,152,171		68.0%	0.0%
	\$10.00	11	51,654,420	14.9%		36,126,839		15,527,581		69.9%	0.0%
	\$20.00	5	52,456,120	15.1%		39,127,532		13,328,588		74.6%	2.0%
	\$25.00	0	-	0.0%		-		-		0.0%	-100.0%
	\$30.00	0	-	0.0%		-		-		0.0%	-100.0%
	\$50.00	2	10,281,700	3.0%		7,964,326		2,317,374		77.5%	3.9%
<b>Total</b>		<b>112</b>	<b>\$346,319,950</b>			<b>\$237,404,234</b>		<b>\$108,915,716</b>		<b>68.6%</b>	<b>1.2%</b>
Variance	\$1.00	5	1,980,002		7.2%	1,143,014	6.9%	836,988	7.7%	-0.18%	
2010 to	\$2.00	8	-10,100,182		-16.8%	-5,065,644	-13.0%	-5,034,538	-23.8%	2.96%	
2009	\$3.00	3	6,434,688		17.5%	4,238,069	17.6%	2,196,619	17.4%	0.03%	
	\$5.00	3	-4,086,596		-4.1%	-2,922,013	-4.3%	-1,164,583	-3.6%	-0.15%	
	\$7.00	-1	2,335,242		22.0%	1,582,709	21.9%	752,533	22.1%	-0.05%	
	\$10.00	0	9,403,280		22.3%	6,554,923	22.2%	2,848,357	22.5%	-0.05%	
	\$20.00	-1	20,300,300		63.1%	16,050,268	69.6%	4,250,032	46.8%	2.82%	
	\$25.00	-1	-1,973,425		-100.0%	-1,435,135	-100.0%	-538,290	-100.0%	-72.72%	
	\$30.00	-2	-3,344,640		-100.0%	-2,424,770	-100.0%	-919,870	-100.0%	-72.50%	
	\$50.00	-1	-5,604,350		-35.3%	-3,522,389	-30.7%	-2,081,961	-47.3%	5.15%	
<b>Total</b>		<b>13</b>	<b>\$15,344,319</b>		<b>4.6%</b>	<b>\$14,199,032</b>	<b>6.4%</b>	<b>\$1,145,287</b>	<b>1.1%</b>	<b>1.11%</b>	

Texas Lottery Commission  
**Instant Tickets by Price Point**  
**Sales, Prize Expense, Sales Contribution and Payout Percentage With Year Over Year Changes**  
 Unaudited

Notes - Instant Ticket Variances

		FY 2010		FY 2009		Difference
Sales	\$1 - \$7		\$231,927,710		\$235,364,556	-\$3,436,846
Prize Exp.	\$1 - \$7		\$154,185,536		\$155,209,401	-\$1,023,865
Sales Cont.	\$1 - \$7		\$77,742,174		\$80,155,155	-\$2,412,981
Prize Exp. %	\$1 - \$7		66.5%		65.9%	0.5%
		FY 2010		FY 2009		Difference
Sales	\$10 - \$50		\$114,392,240		\$95,611,075	\$18,781,165
Prize Exp.	\$10 - \$50		\$83,218,698		\$67,995,801	\$15,222,897
Sales Cont.	\$10 - \$50		\$31,173,542		\$27,615,274	\$3,558,268
Prize Exp. %	\$10 - \$50		72.7%		71.1%	1.6%
		FY 2010		FY 2009		Difference
Sales	Instant		\$346,319,950		\$330,975,631	\$15,344,319
Prize Exp.	Instant		\$237,404,234		\$223,205,201	\$14,199,032
Sales Cont.	Instant		\$108,915,716		\$107,770,430	\$1,145,287
Prize Exp. %	Instant		68.6%		67.4%	1.1%

		FY 2010		FY 2009		Difference
Sales	\$1 - \$10		\$283,582,130		\$277,615,696	\$5,966,434
Prize Exp.	\$1 - \$10		\$190,312,375		\$184,781,317	\$5,531,059
Sales Cont.	\$1 - \$10		\$93,269,755		\$92,834,379	\$435,375
Prize Exp. %	\$1 - \$10		67.1%		66.6%	0.6%
		FY 2010		FY 2009		Difference
Sales	\$20 - \$50		\$62,737,820		\$53,359,935	\$9,377,885
Prize Exp.	\$20 - \$50		\$47,091,858		\$38,423,885	\$8,667,974
Sales Cont.	\$20 - \$50		\$15,645,962		\$14,936,050	\$709,911
Prize Exp. %	\$20 - \$50		75.1%		72.0%	3.1%
		FY 2010		FY 2009		Difference
Sales	Instant		\$346,319,950		\$330,975,631	\$15,344,319
Prize Exp.	Instant		\$237,404,234		\$223,205,201	\$14,199,032
Sales Cont.	Instant		\$108,915,716		\$107,770,430	\$1,145,287
Prize Exp. %	Instant		68.6%		67.4%	1.1%

Texas Lottery Commission  
**Weekly Sales Summary**  
**& Comparison to Previous Week**  
 Unaudited

	Week Ending 10/17/2009	% of Sales	Week Ending 10/10/2009	% of Sales	\$ change	% change
	<u>THIS WEEK</u>		<u>LAST WEEK</u>			
Total Sales	<u>\$73,921,193</u>		<u>\$73,785,700</u>		<u>\$135,493</u>	0.18%
Instant Tickets	<u>\$50,806,599</u>	68.7%	<u>\$52,238,261</u>	70.8%	<u>-\$1,431,662</u>	-2.74%
Lotto Texas	\$7,262,683	9.8%	\$7,061,948	9.6%	\$200,735	2.84%
Pick 3	\$4,990,457	6.8%	\$5,050,571	6.8%	-\$60,114	-1.19%
Pick 3 Sum It Up	\$99,390	0.1%	\$102,587	0.1%	-\$3,197	-3.12%
Cash 5	\$1,276,305	1.7%	\$1,300,852	1.8%	-\$24,547	-1.89%
Texas Two Step	\$769,253	1.0%	\$811,464	1.1%	-\$42,211	-5.20%
Mega Millions	\$6,449,660	8.7%	\$5,100,350	6.9%	\$1,349,310	26.46%
Megaplier	\$1,245,391	1.7%	\$1,050,507	1.4%	\$194,884	18.55%
Daily 4	\$931,084	1.3%	\$971,148	1.3%	-\$40,064	-4.13%
Daily 4 Sum It Up	\$90,371	0.1%	\$98,013	0.1%	-\$7,642	-7.80%
Total Online Sales	<u>\$23,114,594</u>		<u>\$21,547,439</u>		<u>\$1,567,155</u>	7.27%

\* Totals may not sum due to rounding.

Texas Lottery Commission  
Weekly Sales Summary  
Unaudited

INSTANT TICKETS  
TOP TEN SELLING GAMES

For the Week Ending : 10/17/2009

Rank	Price Point	Game	Sales (Millions)
1	\$ 20	\$500,000,000 BLOCKBUSTER	\$ 5.591
2	\$ 5	SUPER WILD 8'S	\$ 2.801
3	\$ 10	BIG PAYOUT	\$ 2.536
4	\$ 20	MERRY MILLIONAIRE	\$ 2.468
5	\$ 5	DALLAS COWBOYS	\$ 2.052
6	\$ 3	BONUS WORD CASHWORD	\$ 1.950
7	\$ 3	BONUS CASHWORD	\$ 1.722
8	\$ 2	LUCKY 13	\$ 1.642
9	\$ 10	SET FOR LIFE	\$ 1.488
10	\$ 2	BREAK THE BANK	\$ 1.416



Texas Lottery Commission  
Prize Payout Tracking Report  
Unaudited

Through Week Ending 10/17/2009

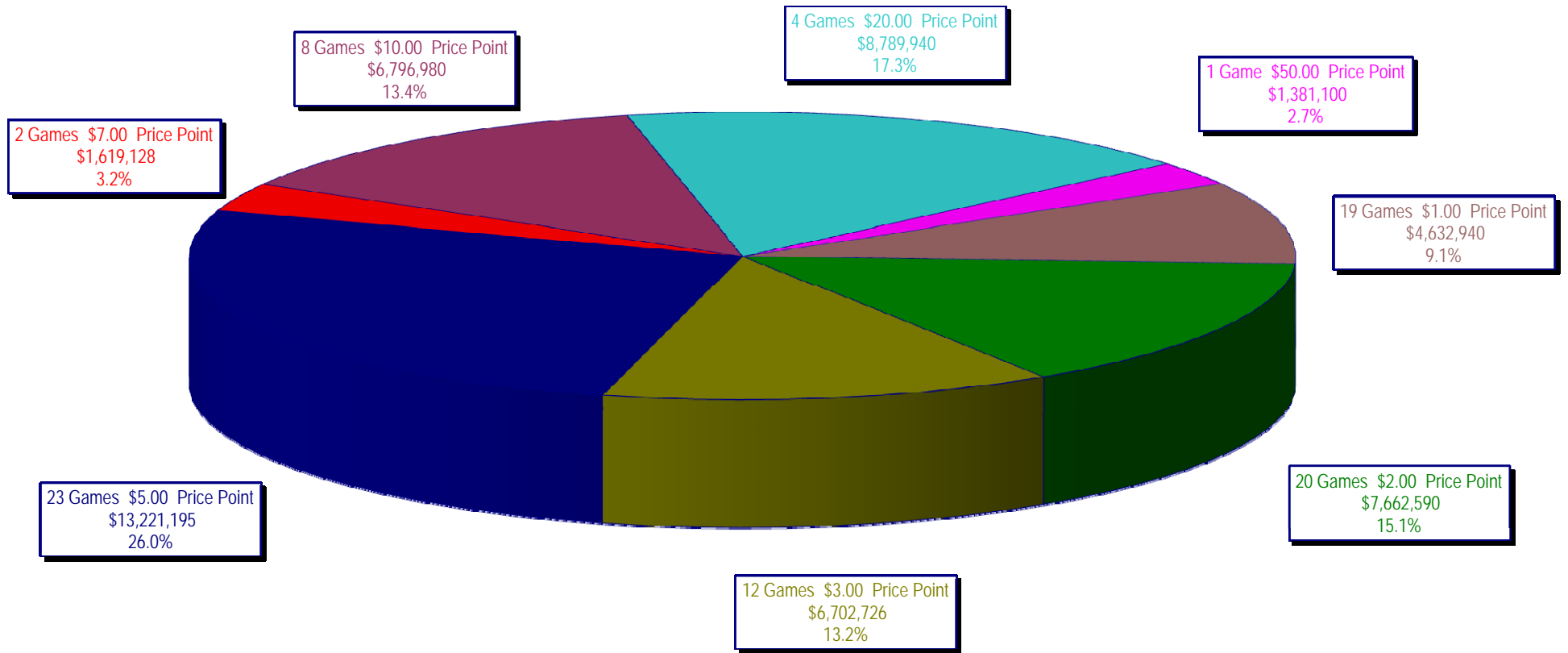
On-Line Sales

		FY Sales Through Week Ending 10/17/2009		FY Prize Expense Through Week Ending 10/17/2009	Actual* Prize Payout	Base Payout (Prize Pool)
Lotto	\$	46,771,796	\$	23,400,299	50.03%	50.00%
Pick 3		34,766,143		16,701,550	48.04%	50.00%
Pick 3 Sum It Up		698,546		322,097	46.11%	50.00%
Cash 5		8,793,120		4,397,725	50.01%	50.00%
Texas Two-Step		5,671,106		3,093,794	54.55%	50.00%
Mega Millions		27,955,564		13,758,294	49.21%	50.00%**
Megaplier		6,136,158		1,604,566	26.15%	N/A
Daily 4		6,488,776		3,166,250	48.80%	50.00%
Daily 4-Sum It Up		643,084		266,420	41.43%	50.00%
<b>Totals</b>	\$	<b>137,924,292</b>	\$	<b>66,710,995</b>	<b>48.37%</b>	

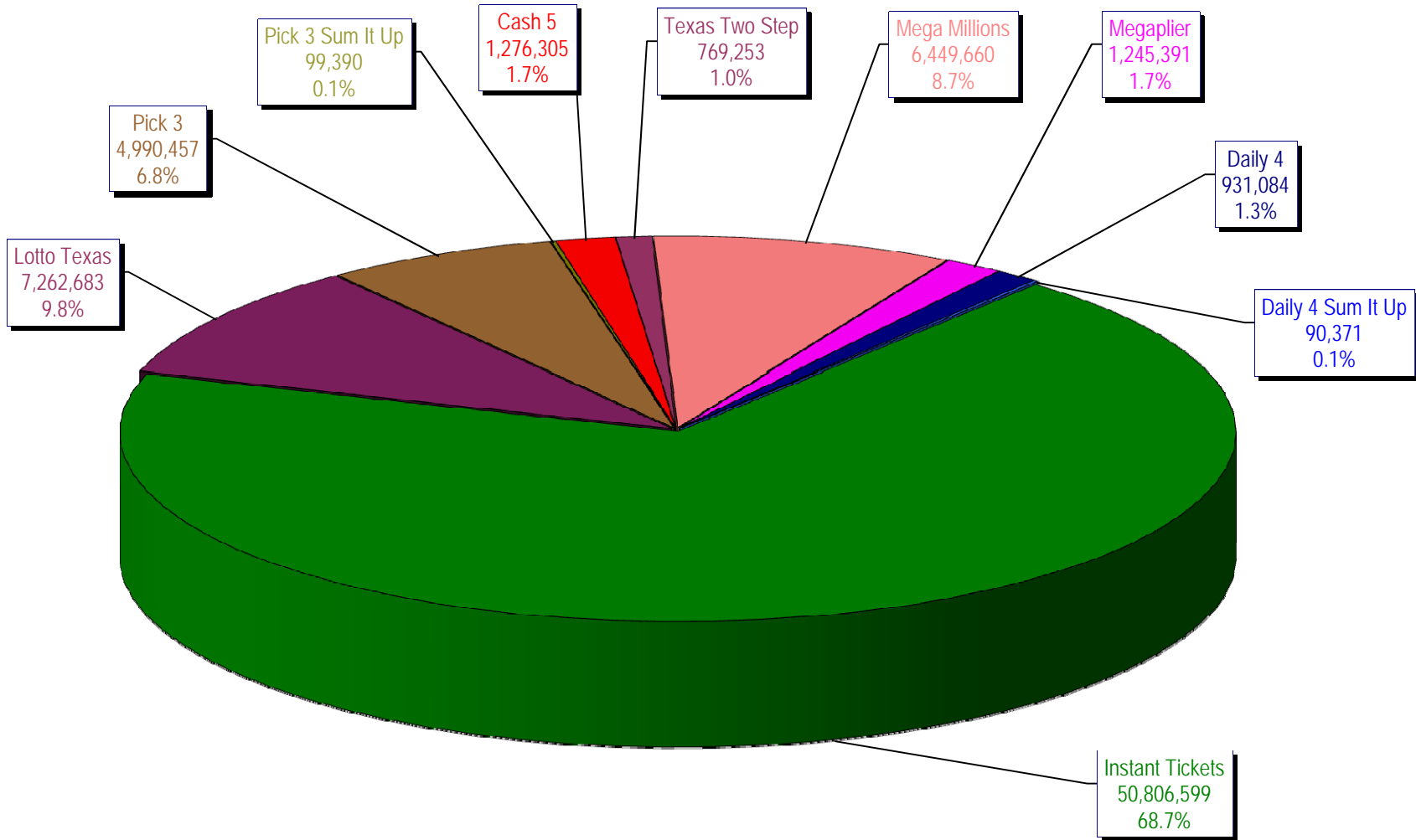
\* Before Unclaimed Prizes

\*\* Estimated; depends on # of guaranteed prizes won in Texas

Texas Lottery Commission  
Instant Ticket Sales  
For the Week Ending 10/17/2009  
(Unaudited)



Texas Lottery Commission  
**All Game Sales**  
For the Week Ending 10/17/2009  
(Unaudited)



Texas Lottery Commission - Weekly Sales Summary for FY 2010 (Unaudited)

Week Ended	Instant Games	New Games & Dates	Lotto Texas	Jackpot W	S	Pick 3	Pick 3 Sum It Up	Cash 5	Texas Two Step	Jackpot M	TH	Mega Millions	Jackpot T	F	Megaplier	Daily 4	Daily 4 Sum It Up	Total	Per Cap.
9/5/2009	53,436,608.00	1183 (\$2,N) - 08/31/09	6,294,287.00	45	47	5,276,229.00	104,886.00	1,338,093.00	1,212,330.00	1.2	200	2,959,401.00	12	12	708,622.00	955,411.00	95,751.00	72,381,618.00	2.98
9/12/2009	49,896,100.00	1200 (\$1,N); 1201 (\$10,N) - 09/07/09	6,426,945.00	49	51	5,109,927.50	104,641.00	1,278,982.00	771,782.00	225	200	2,811,431.00	18	28	693,407.00	918,268.00	90,931.50	68,102,415.00	2.80
9/19/2009	50,971,937.00	1202 (\$3,N); 1185 (\$5,N) - 09/14/09	6,496,645.00	53	55	5,176,010.00	103,700.00	1,295,302.00	803,124.00	200	225	3,164,844.00	38	51	760,088.00	965,671.50	94,237.00	69,831,558.50	2.87
9/26/2009	49,975,243.00	1141 (\$1, N); 1259 (\$3,N) - 09/21/09	6,765,369.00	57	59	4,894,237.50	98,171.00	1,271,129.00	915,249.00	275	400	3,568,088.00	62	75	822,408.00	918,596.00	92,187.50	69,320,678.00	2.85
10/3/2009	52,283,569.00	1203 (\$2,N); 1172 (\$5,N) - 09/28/09	7,003,107.00	61	63	5,156,873.00	102,841.50	1,315,863.00	1,111,913.00	525	650	4,270,019.00	88	105	939,935.00	993,158.50	97,984.50	73,275,263.50	3.01
10/10/2009	52,238,261.00	1205 (\$1,N); 1263 (\$3,N) - 10/05/09	7,061,948.00	64	67	5,050,571.00	102,586.50	1,300,852.00	811,464.00	200	225	5,100,350.00	122	145	1,050,507.00	971,147.50	98,012.50	73,785,699.50	3.03
10/17/2009	50,806,599.00	1187 (\$2,N); 1193 (\$20,N) - 10/12/09	7,262,683.00	70	73	4,990,457.00	99,389.50	1,276,305.00	769,253.00	200	200	6,449,660.00	170	200	1,245,391.00	931,084.00	90,371.00	73,921,192.50	3.04
weekly change	-2.74%		2.84%			-1.19%	-3.12%	-1.89%	-5.20%			26.46%			18.55%	-4.13%	-7.80%	0.18%	
	<b>SALES</b>		<b>SALES</b>			<b>SALES</b>	<b>SALES</b>	<b>SALES</b>	<b>SALES</b>			<b>SALES</b>			<b>SALES</b>	<b>SALES</b>	<b>SALES</b>	<b>SALES</b>	<b>% of Sales</b>
Startup to date	36,618,438,249.00		10,526,385,343.00			3,618,363,900.50	13,099,621.00	2,198,697,260.00	483,459,037.00			1,169,486,163.45			271,704,445.00	95,538,987.00	14,396,910.50	55,217,703,888.45	100.0%
Calendar Year to date	2,236,534,574.00		187,016,051.00			227,204,401.50	175,670.50	55,958,806.00	42,299,900.00			185,529,259.95			39,836,630.00	39,331,328.50	4,256,103.00	3,018,142,724.45	100.0%
Fiscal Year to date 2	346,319,950.00		46,771,796.00			34,766,143.00	698,545.50	8,793,120.00	5,671,106.00			27,955,564.00			6,136,158.00	6,488,776.00	643,083.50	484,244,242.00	100.0%