



*WEEKLY SALES SUMMARY*

Unaudited

**Week Ending: 10/24/2009**

Texas Lottery Commission  
Fiscal Year to Date Sales Comparison  
Unaudited

Through the week ending 10/24/2009 (8 weeks)

Sales by Game	FY 2008 *	FY 2009 **	FY 2010	\$ Change		% Change	
				FY 2010 to FY 2008	FY 2010 to FY 2009 to	FY 2010 to FY 2008	FY 2010 to FY 2009
Instants	\$ 420,012,790	\$ 380,953,212	\$ 397,051,542	\$ -22,961,248	\$ 16,098,330	-5.5%	4.2%
Lotto Texas	33,736,773	27,170,004	52,557,088	18,820,315	25,387,084	55.8%	93.4%
Pick 3	44,708,800	39,805,759	39,611,958	-5,096,842	-193,801	-11.4%	-0.5%
Pick 3 Sum It Up	-	866,308	791,802	791,802	-74,507	-	-8.6%
Cash 5	12,423,334	10,497,682	10,075,153	-2,348,181	-422,529	-18.9%	-4.0%
Texas Two Step	7,077,451	7,076,229	6,478,077	-599,374	-598,152	-8.5%	-8.5%
Mega Millions	20,370,861	18,908,209	30,732,192	10,361,331	11,823,983	50.9%	62.5%
Megaplier	5,336,505	5,009,907	6,799,649	1,463,144	1,789,742	27.4%	35.7%
Daily 4	5,158,354	5,902,825	7,420,417	2,262,064	1,517,593	-	25.7%
Daily 4 Sum It Up	1,568,127	804,303	732,368	-835,760	-71,935	-	-8.9%
<b>Total</b>	<b>\$ 550,392,994</b>	<b>\$ 496,994,437</b>	<b>\$ 552,250,245</b>	<b>\$ 1,857,251</b>	<b>\$ 55,255,808</b>	<b>0.3%</b>	<b>11.1%</b>

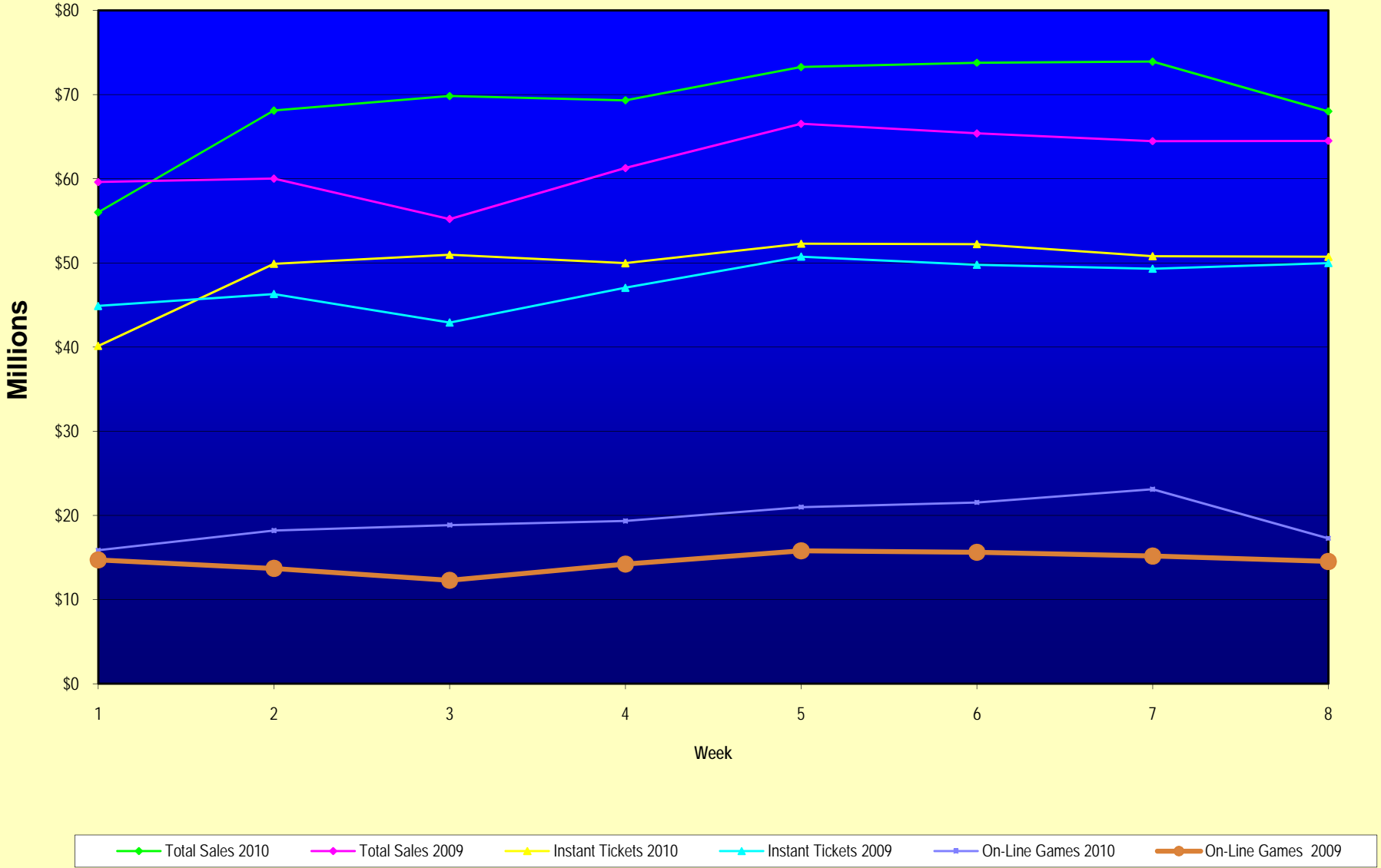
\* 3 extra days      \*\* 1 extra day

Texas Lottery Commission  
Fiscal Year to Date Cumulative Average Sales Comparison  
Unaudited

Through the week ending 10/24/2009 (8 weeks)

Sales by Game	FY 2008	FY 2009	FY 2010
Instant	\$ 7,368,645	\$ 6,926,422	\$ 7,352,806
Lotto Texas	591,873	494,000	973,279
Pick 3	784,365	723,741	733,555
Pick 3 Sum It Up	-	15,751	14,663
Cash 5	217,953	190,867	186,577
Texas Two Step	124,166	128,659	119,964
Mega Millions	357,384	343,786	569,115
Megaplier	93,623	91,089	125,919
Daily 4	90,497	107,324	137,415
Daily 4 Sum It Up	27,511	14,624	13,562
<b>Total</b>	<b>\$ <u>9,656,017</u></b>	<b>\$ <u>9,036,262</u></b>	<b>\$ <u>10,226,856</u></b>
	thru 10/27/2007 57 days	thru 10/25/2008 55 days	thru 10/24/2009 54 days

### Texas Lottery Commission Fiscal Year Over Year Change in Sales



Note: Week 1 is not a full week of sales as this report is prepared on a Fiscal Year basis.

Texas Lottery Commission  
Instant Tickets by Price Point  
Sales, Prize Expense, Sales Contribution and Payout Percentage With Year Over Year Changes  
Unaudited

Fiscal Year	Price Point	# of Active Games	FY Sales	% of Instant Ticket Sales	Year over Year Change in Sales	FY Prize Expense	Year over Year Change in Prize Expense	FY Sales Contribution	Year over Year Change in Contribution	Average Prize Payout %	Year over Year Change in Payout %
2009	\$1.00	20	31,848,094	8.4%		19,238,943		12,609,151		60.4%	0.5%
thru	\$2.00	19	68,477,166	18.0%		44,403,829		24,073,337		64.8%	-0.7%
10/25/2008	\$3.00	10	42,869,832	11.3%		28,156,936		14,712,896		65.7%	0.0%
	\$5.00	25	115,843,164	30.4%		78,794,037		37,049,127		68.0%	0.1%
	\$7.00	5	11,992,106	3.1%		8,159,499		3,832,607		68.0%	0.1%
	\$10.00	11	47,571,940	12.5%		33,294,507		14,277,433		70.0%	0.0%
	\$20.00	7	38,453,420	10.1%		27,597,400		10,856,020		71.8%	0.0%
	\$25.00	1	2,140,200	0.6%		1,556,218		583,982		72.7%	0.1%
	\$30.00	2	3,802,290	1.0%		2,756,135		1,046,155		72.5%	0.1%
	\$50.00	3	17,955,000	4.7%		12,984,034		4,970,966		72.3%	0.2%
<b>Total</b>		<b>103</b>	<b>\$380,953,212</b>			<b>\$256,941,537</b>		<b>\$124,011,675</b>		<b>67.4%</b>	<b>-0.3%</b>
2010	\$1.00	24	33,789,727	8.5%		20,325,963		13,463,764		60.2%	0.1%
thru	\$2.00	27	57,957,296	14.6%		39,075,388		18,881,908		67.4%	3.5%
10/24/2009	\$3.00	14	49,868,562	12.6%		32,766,693		17,101,869		65.7%	0.2%
	\$5.00	27	109,795,078	27.7%		74,526,650		35,268,428		67.9%	-0.2%
	\$7.00	4	14,445,949	3.6%		9,822,282		4,623,667		68.0%	0.0%
	\$10.00	11	57,962,300	14.6%		40,537,948		17,424,352		69.9%	0.0%
	\$20.00	5	61,586,380	15.5%		45,944,968		15,641,412		74.6%	2.0%
	\$25.00	0	-	0.0%		-		-		0.0%	-100.0%
	\$30.00	0	-	0.0%		-		-		0.0%	-100.0%
	\$50.00	2	11,646,250	2.9%		9,021,746		2,624,504		77.5%	3.9%
<b>Total</b>		<b>114</b>	<b>\$397,051,542</b>			<b>\$272,021,638</b>		<b>\$125,029,904</b>		<b>68.5%</b>	<b>1.1%</b>
Variance	\$1.00	4	1,941,633		6.1%	1,087,020	5.7%	854,613	6.8%	-0.25%	
2010 to	\$2.00	8	-10,519,870		-15.4%	-5,328,441	-12.0%	-5,191,429	-21.6%	2.58%	
2009	\$3.00	4	6,998,730		16.3%	4,609,756	16.4%	2,388,974	16.2%	0.03%	
	\$5.00	2	-6,048,086		-5.2%	-4,267,387	-5.4%	-1,780,699	-4.8%	-0.14%	
	\$7.00	-1	2,453,843		20.5%	1,662,783	20.4%	791,060	20.6%	-0.05%	
	\$10.00	0	10,390,360		21.8%	7,243,441	21.8%	3,146,919	22.0%	-0.05%	
	\$20.00	-2	23,132,960		60.2%	18,347,567	66.5%	4,785,393	44.1%	2.83%	
	\$25.00	-1	-2,140,200		-100.0%	-1,556,218	-100.0%	-583,982	-100.0%	-72.71%	
	\$30.00	-2	-3,802,290		-100.0%	-2,756,135	-100.0%	-1,046,155	-100.0%	-72.49%	
	\$50.00	-1	-6,308,750		-35.1%	-3,962,287	-30.5%	-2,346,463	-47.2%	5.15%	
<b>Total</b>		<b>11</b>	<b>\$16,098,330</b>		<b>4.2%</b>	<b>\$15,080,100</b>	<b>5.9%</b>	<b>\$1,018,230</b>	<b>0.8%</b>	<b>1.06%</b>	

Texas Lottery Commission  
**Instant Tickets by Price Point**  
**Sales, Prize Expense, Sales Contribution and Payout Percentage With Year Over Year Changes**  
 Unaudited

Notes - Instant Ticket Variances

		FY 2010		FY 2009		Difference
Sales	\$1 - \$7		\$265,856,612		\$271,030,362	-\$5,173,750
Prize Exp.	\$1 - \$7		\$176,516,976		\$178,753,244	-\$2,236,269
Sales Cont.	\$1 - \$7		\$89,339,636		\$92,277,118	-\$2,937,481
Prize Exp. %	\$1 - \$7		66.4%		66.0%	0.4%
		FY 2010		FY 2009		Difference
Sales	\$10 - \$50		\$131,194,930		\$109,922,850	\$21,272,080
Prize Exp.	\$10 - \$50		\$95,504,662		\$78,188,293	\$17,316,369
Sales Cont.	\$10 - \$50		\$35,690,268		\$31,734,557	\$3,955,711
Prize Exp. %	\$10 - \$50		72.8%		71.1%	1.7%
		FY 2010		FY 2009		Difference
Sales	Instant		\$397,051,542		\$380,953,212	\$16,098,330
Prize Exp.	Instant		\$272,021,638		\$256,941,537	\$15,080,100
Sales Cont.	Instant		\$125,029,904		\$124,011,675	\$1,018,230
Prize Exp. %	Instant		68.5%		67.4%	1.1%

		FY 2010		FY 2009		Difference
Sales	\$1 - \$10		\$323,818,912		\$318,602,302	\$5,216,610
Prize Exp.	\$1 - \$10		\$217,054,924		\$212,047,751	\$5,007,173
Sales Cont.	\$1 - \$10		\$106,763,988		\$106,554,551	\$209,437
Prize Exp. %	\$1 - \$10		67.0%		66.6%	0.5%
		FY 2010		FY 2009		Difference
Sales	\$20 - \$50		\$73,232,630		\$62,350,910	\$10,881,720
Prize Exp.	\$20 - \$50		\$54,966,714		\$44,893,786	\$10,072,928
Sales Cont.	\$20 - \$50		\$18,265,916		\$17,457,124	\$808,792
Prize Exp. %	\$20 - \$50		75.1%		72.0%	3.1%
		FY 2010		FY 2009		Difference
Sales	Instant		\$397,051,542		\$380,953,212	\$16,098,330
Prize Exp.	Instant		\$272,021,638		\$256,941,537	\$15,080,100
Sales Cont.	Instant		\$125,029,904		\$124,011,675	\$1,018,230
Prize Exp. %	Instant		68.5%		67.4%	1.1%

Texas Lottery Commission  
**Weekly Sales Summary**  
**& Comparison to Previous Week**  
 Unaudited

	Week Ending 10/24/2009	% of Sales	Week Ending 10/17/2009	% of Sales	\$ change	% change
	<u>THIS WEEK</u>		<u>LAST WEEK</u>			
Total Sales	<u>\$68,006,003</u>		<u>\$73,921,193</u>		<u>-\$5,915,190</u>	-8.00%
Instant Tickets	<u>\$50,731,592</u>	74.6%	<u>\$50,806,599</u>	68.7%	<u>-\$75,007</u>	-0.15%
Lotto Texas	\$5,785,292	8.5%	\$7,262,683	9.8%	-\$1,477,391	-20.34%
Pick 3	\$4,845,815	7.1%	\$4,990,457	6.8%	-\$144,642	-2.90%
Pick 3 Sum It Up	\$93,256	0.1%	\$99,390	0.1%	-\$6,134	-6.17%
Cash 5	\$1,282,033	1.9%	\$1,276,305	1.7%	\$5,728	0.45%
Texas Two Step	\$806,971	1.2%	\$769,253	1.0%	\$37,718	4.90%
Mega Millions	\$2,776,628	4.1%	\$6,449,660	8.7%	-\$3,673,032	-56.95%
Megaplier	\$663,491	1.0%	\$1,245,391	1.7%	-\$581,900	-46.72%
Daily 4	\$931,641	1.4%	\$931,084	1.3%	\$557	0.06%
Daily 4 Sum It Up	\$89,284	0.1%	\$90,371	0.1%	-\$1,087	-1.20%
Total Online Sales	<u>\$17,274,411</u>		<u>\$23,114,594</u>		<u>-\$5,840,183</u>	-25.27%

\* Totals may not sum due to rounding.

Texas Lottery Commission  
Weekly Sales Summary  
Unaudited

INSTANT TICKETS  
TOP TEN SELLING GAMES

For the Week Ending : 10/24/2009

Rank	Price Point	Game	Sales (Millions)
1	\$ 20	\$500,000,000 BLOCKBUSTER	\$ 4.958
2	\$ 20	MERRY MILLIONAIRE	\$ 3.535
3	\$ 10	BIG PAYOUT	\$ 2.299
4	\$ 5	SUPER WILD 8'S	\$ 2.173
5	\$ 5	WINTER WINNINGS	\$ 1.955
6	\$ 3	BONUS WORD CASHWORD	\$ 1.942
7	\$ 5	DALLAS COWBOYS	\$ 1.931
8	\$ 3	BONUS CASHWORD	\$ 1.597
9	\$ 2	SNOW DOUGH	\$ 1.490
10	\$ 10	SET FOR LIFE	\$ 1.430



Texas Lottery Commission  
Prize Payout Tracking Report  
Unaudited

Through Week Ending 10/24/2009

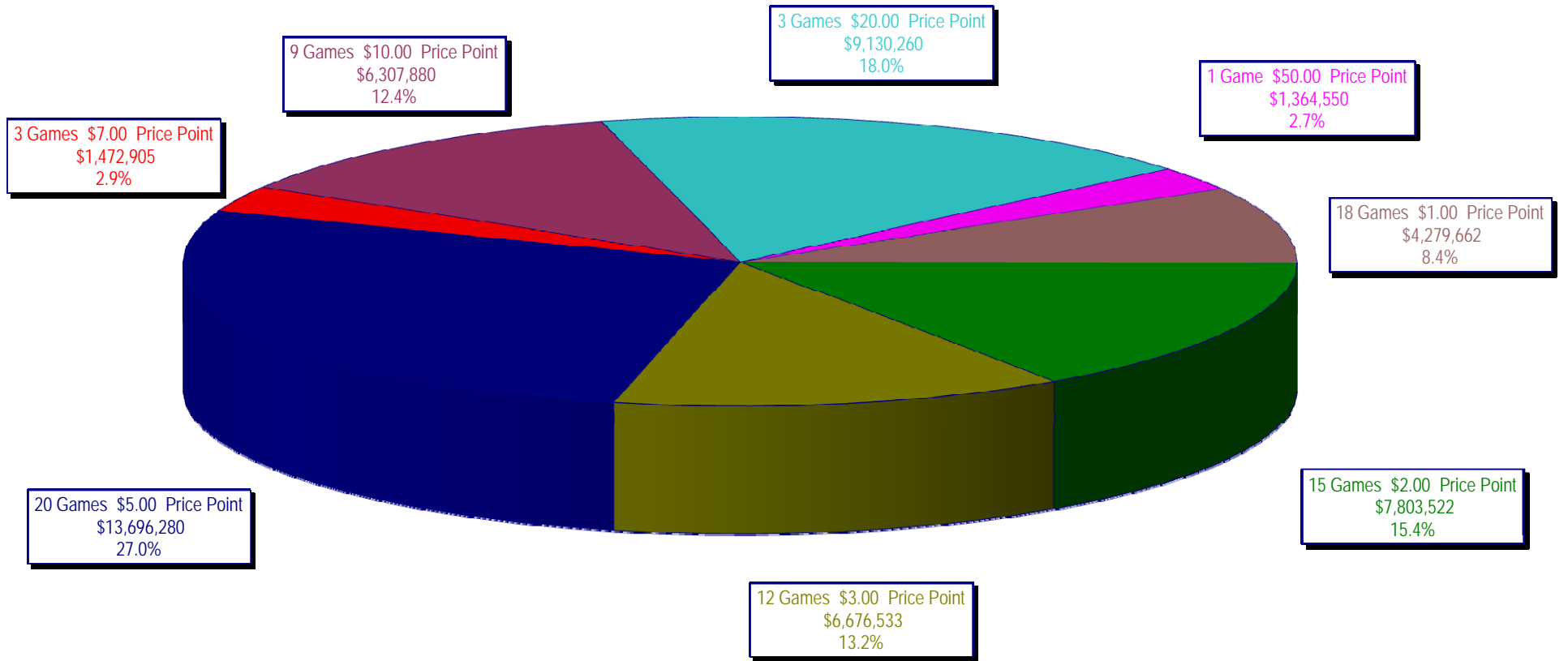
On-Line Sales

		FY Sales Through Week Ending 10/24/2009		FY Prize Expense Through Week Ending 10/24/2009	Actual* Prize Payout	Base Payout (Prize Pool)
Lotto	\$	52,557,088	\$	26,295,363	50.03%	50.00%
Pick 3		39,611,958		18,326,280	46.26%	50.00%
Pick 3 Sum It Up		791,802		357,024	45.09%	50.00%
Cash 5		10,075,153		5,038,815	50.01%	50.00%
Texas Two-Step		6,478,077		3,498,080	54.00%	50.00%
Mega Millions		30,732,192		15,700,847	51.09%	50.00%**
Megaplier		6,799,649		1,723,638	25.35%	N/A
Daily 4		7,420,417		3,882,450	52.32%	50.00%
Daily 4-Sum It Up		732,368		409,069	55.86%	50.00%
<b>Totals</b>	\$	<b>155,198,703</b>	\$	<b>75,231,566</b>	<b>48.47%</b>	

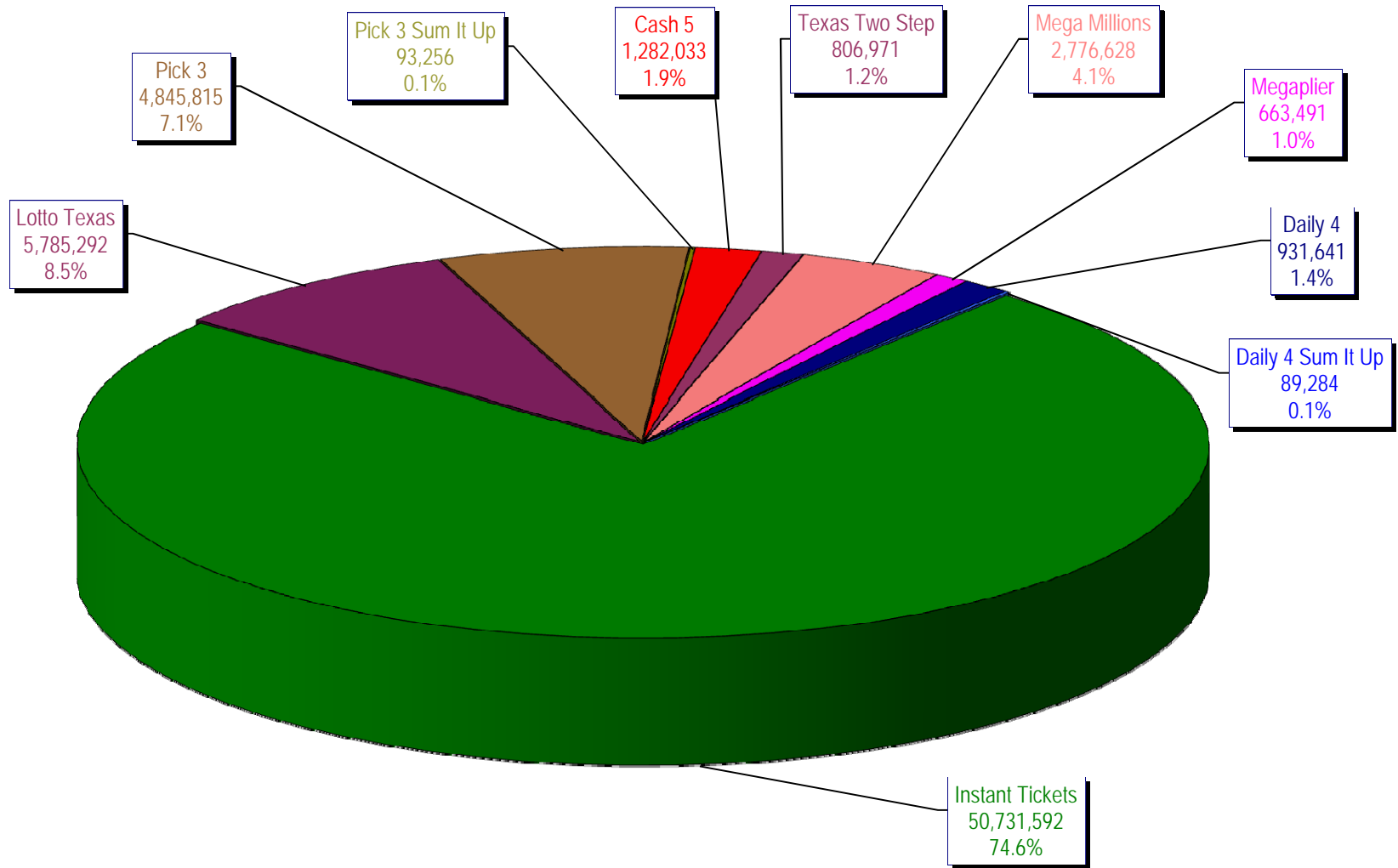
\* Before Unclaimed Prizes

\*\* Estimated; depends on # of guaranteed prizes won in Texas

Texas Lottery Commission  
Instant Ticket Sales  
For the Week Ending 10/24/2009  
(Unaudited)



Texas Lottery Commission  
**All Game Sales**  
For the Week Ending 10/24/2009  
(Unaudited)



Texas Lottery Commission - Weekly Sales Summary for FY 2010 (Unaudited)

Week Ended	Instant Games	New Games & Dates	Lotto Texas	Jackpot W	S	Pick 3	Pick 3 Sum It Up	Cash 5	Texas Two Step	Jackpot M	TH	Mega Millions	Jackpot T	F	Megaplier	Daily 4	Daily 4 Sum It Up	Total	Per Cap.
9/5/2009	53,436,608.00	1183 (\$2,N) - 08/31/09	6,294,287.00	45	47	5,276,229.00	104,886.00	1,338,093.00	1,212,330.00	1.2	200	2,959,401.00	12	12	708,622.00	955,411.00	95,751.00	72,381,618.00	2.98
9/12/2009	49,896,100.00	1200 (\$1,N); 1201 (\$10,N) - 09/07/09	6,426,945.00	49	51	5,109,927.50	104,641.00	1,278,982.00	771,782.00	225	200	2,811,431.00	18	28	693,407.00	918,268.00	90,931.50	68,102,415.00	2.80
9/19/2009	50,971,937.00	1202 (\$3,N); 1185 (\$5,N) - 09/14/09	6,496,645.00	53	55	5,176,010.00	103,700.00	1,295,302.00	803,124.00	200	225	3,164,844.00	38	51	760,088.00	965,671.50	94,237.00	69,831,558.50	2.87
9/26/2009	49,975,243.00	1141 (\$1, N); 1259 (\$3,N) - 09/21/09	6,765,369.00	57	59	4,894,237.50	98,171.00	1,271,129.00	915,249.00	275	400	3,568,088.00	62	75	822,408.00	918,596.00	92,187.50	69,320,678.00	2.85
10/3/2009	52,283,569.00	1203 (\$2,N); 1172 (\$5,N) - 09/28/09	7,003,107.00	61	63	5,156,873.00	102,841.50	1,315,863.00	1,111,913.00	525	650	4,270,019.00	88	105	939,935.00	993,158.50	97,984.50	73,275,263.50	3.01
10/10/2009	52,238,261.00	1205 (\$1,N); 1263 (\$3,N) - 10/05/09	7,061,948.00	64	67	5,050,571.00	102,586.50	1,300,852.00	811,464.00	200	225	5,100,350.00	122	145	1,050,507.00	971,147.50	98,012.50	73,785,699.50	3.03
10/17/2009	50,806,599.00	1187 (\$2,N); 1193 (\$20,N) - 10/12/09	7,262,683.00	70	73	4,990,457.00	99,389.50	1,276,305.00	769,253.00	200	200	6,449,660.00	170	200	1,245,391.00	931,084.00	90,371.00	73,921,192.50	3.04
10/24/2009	50,731,592.00	1188 (\$3,N); 1189 (\$5,N) - 10/19/09	5,785,292.00	76	4	4,845,815.00	93,256.00	1,282,033.00	806,971.00	225	275	2,776,628.00	12	18	663,491.00	931,641.00	89,284.00	68,006,003.00	2.80
weekly change	-0.15%		-20.34%			-2.90%	-6.17%	0.45%	4.90%			-56.95%			-46.72%	0.06%	-1.20%		-8.00%
	<b>SALES</b>		<b>SALES</b>			<b>SALES</b>	<b>SALES</b>	<b>SALES</b>	<b>SALES</b>			<b>SALES</b>			<b>SALES</b>	<b>SALES</b>	<b>SALES</b>	<b>SALES</b>	<b>% of Sales</b>
Startup to date	36,669,169,841.00		10,532,170,635.00			3,623,209,715.50	13,192,877.00	2,199,979,293.00	484,266,008.00			1,172,262,791.45			272,367,936.00	96,470,628.00	14,486,194.50	55,285,709,891.45	100.0%
Calendar Year to date	2,287,266,166.00		192,801,343.00			232,050,216.50	175,670.50	57,240,839.00	43,106,871.00			188,305,887.95			40,500,121.00	40,262,969.50	4,345,387.00	3,086,055,471.45	100.0%
Fiscal Year to date 2	397,051,542.00		52,557,088.00			39,611,958.00	791,801.50	10,075,153.00	6,478,077.00			30,732,192.00			6,799,649.00	7,420,417.00	732,367.50	552,250,245.00	100.0%